

# Houston Pilots Forecast Package



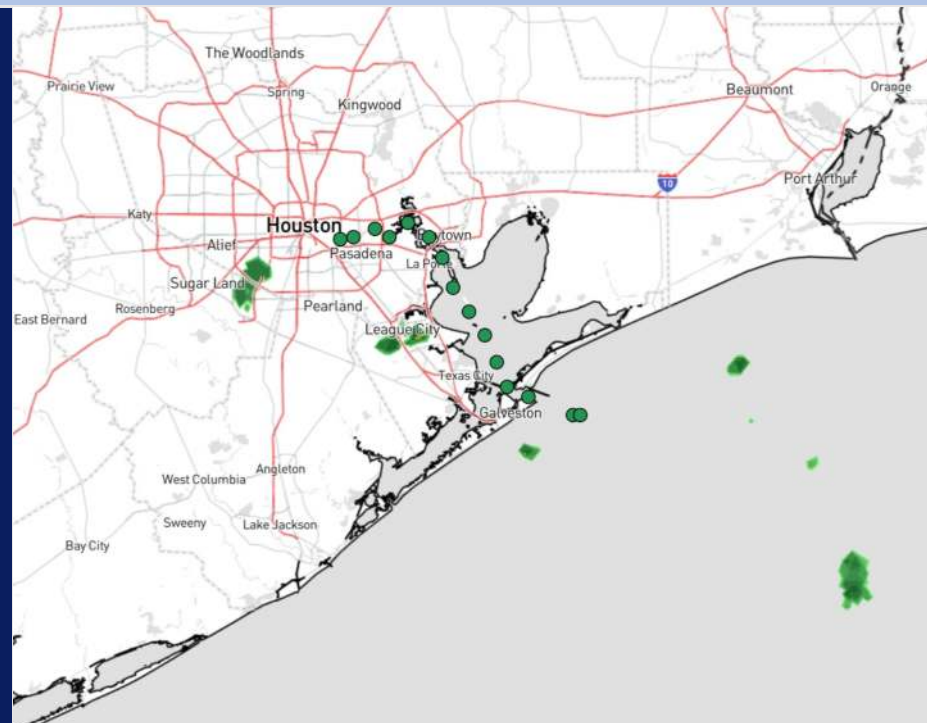
Updated: 10:30 PM CT

Sunday, August 25, 2024

Forecaster: Xander Lowry

## Weather Headlines

- Scattered showers and storms possible over the next few days, with **25-30 kt gusts in play.**
- Non-thunderstorm related winds will remain relatively calm to begin the week.
- Not favoring any fog risks over the next few days.



Current Radar: 10:10 PM CT



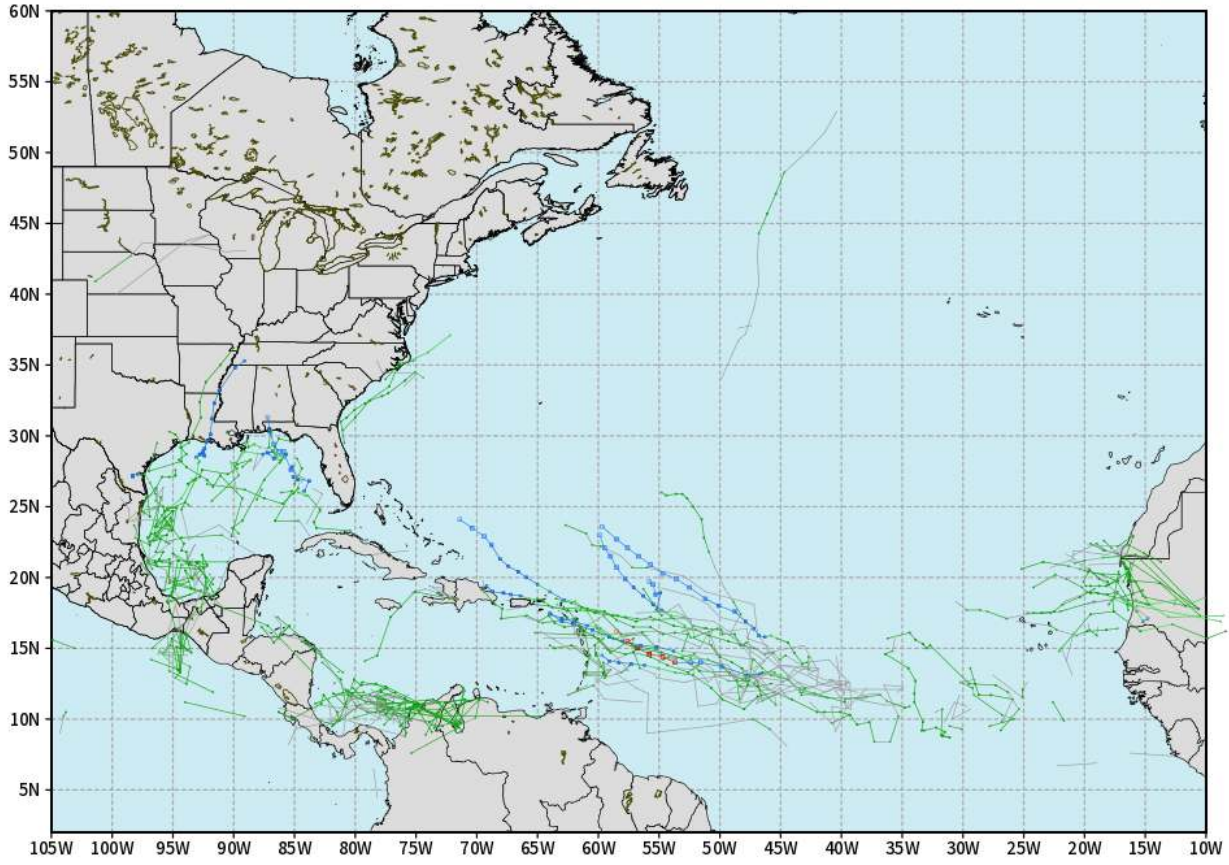
As always, please do not hesitate to reach out to us with any forecast questions via the chat option on Clarity or our on-call number, **(317)-560-8122** press **1** for forecast questions.

# Houston Pilots Tropical Update

## European Model Next 10 Days - Tropical Tracks

ECMWF ATLANTIC EPS Cyclone Locations --> Next [10-days]  
INIT: 12Z25AUG2024 --> UNTIL 12Z04SEP2024

o-o ENSEMBLE MEAN  
o-o 1000 - 1010 hPa  
o-o 980 - 999 hPa  
o-o 960 - 979 hPa  
o-o 950 - 959 hPa  
o-o < 950 hPa



weathermodels.com

Monitoring very low-end potential for development in the Gulf of Mexico, however not favoring any threats through at least the next 7 days.

Continuing to favor increase in tropical development potential towards beginning of September. Main area of focus just E of Lesser Antilles.

# Houston Pilots Visibility Chart (miles)



## Forecast Confidence



Visibility	Sun 11 pm	Mon 12 am	Mon 1 am	Mon 2 am	Mon 3 am	Mon 4 am	Mon 5 am	Mon 6 am	Mon 7 am	Mon 8 am	Mon 9 am	Mon 10 am	Mon 11 am	Mon 12 pm	Mon 1 pm	Mon 2 pm	Mon 3 pm	Mon 4 pm	Mon 5 pm	Mon 6 pm	Mon 7 pm	Mon 8 pm	Mon 9 pm	Mon 10 pm
Houston Pilots N - 610 Bridge	10.1	10.1	10.1	10.1	10.1	10.1	10.1	10.1	10.1	10.1	10.1	10.1	10.1	7.9	9	9	10.1	10.1	10.1	10.1	10.1	10.1	10.1	10.1
Houston Pilots M - Kinder 1	10.1	10.1	10.1	10.1	10.1	10.1	10.1	10.1	10.1	10.1	10.1	10.1	10.1	7.9	9	9	10.1	10.1	10.1	10.1	10.1	10.1	10.1	10.1
Houston Pilots L - Greens Bayou	10.1	10.1	10.1	10.1	10.1	10.1	10.1	10.1	10.1	10.1	10.1	10.1	10.1	7.9	9	9	10.1	10.1	10.1	10.1	10.1	10.1	10.1	10.1
Houston Pilots K - Shell Crude	10.1	10.1	10.1	10.1	10.1	10.1	10.1	10.1	10.1	10.1	10.1	10.1	10.1	7.9	9	9	10.1	10.1	10.1	10.1	10.1	10.1	10.1	10.1
Houston Pilots J - Lynchburg Ferries	10.1	10.1	10.1	10.1	10.1	10.1	10.1	10.1	10.1	10.1	10.1	10.1	10.1	7.9	9	9	10.1	10.1	10.1	10.1	10.1	10.1	10.1	10.1
Houston Pilots I - Exxon 3	10.1	10.1	10.1	10.1	10.1	10.1	10.1	10.1	10.1	10.1	10.1	10.1	10.1	7.9	9	9	10.1	10.1	10.1	10.1	10.1	10.1	10.1	10.1
Houston Pilots H - Morgans Point	10.1	10.1	10.1	10.1	10.1	10.1	10.1	10.1	10.1	10.1	10.1	10.1	10.1	7.9	9	9	10.1	10.1	10.1	10.1	10.1	10.1	10.1	10.1
Houston Pilots G - 75/76	10.1	10.1	10.1	10.1	10.1	10.1	10.1	10.1	10.1	10.1	10.1	10.1	10.1	10.1	10.1	10.1	10.1	10.1	10.1	10.1	10.1	10.1	10.1	12
Houston Pilots F - 63/64	10.1	10.1	10.1	10.1	10.1	10.1	10.1	10.1	10.1	10.1	10.1	10.1	9	10.1	10.1	10.1	10.1	10.1	10.1	10.1	10.1	10.1	10.1	12
Houston Pilots E - 51/52	10.1	10.1	10.1	10.1	10.1	10.1	10.1	10.1	10.1	10.1	10.1	10.1	6.9	10.1	10.1	10.1	10.1	10.1	10.1	10.1	10.1	10.1	10.1	12
Houston Pilots D - 37/38	10.1	10.1	10.1	10.1	10.1	10.1	10.1	10.1	10.1	10.1	10.1	10.1	6.9	10.1	10.1	10.1	10.1	10.1	10.1	10.1	10.1	10.1	10.1	12
Houston Pilots C - 25/26	10.1	10.1	10.1	10.1	10.1	10.1	10.1	10.1	10.1	10.1	10.1	10.1	6.9	10.1	10.1	10.1	10.1	10.1	10.1	10.1	10.1	10.1	10.1	12
Houston Pilots B - 11/12	10.1	10.1	10.1	10.1	10.1	10.1	10.1	10.1	10.1	10.1	10.1	10.1	10.1	10.1	10.1	10.1	10.1	10.1	10.1	10.1	10.1	10.1	10.1	12
Houston Pilots A - 1 & 2 Bravo	10.1	10.1	10.1	10.1	10.1	10.1	10.1	10.1	10.1	10.1	10.1	9	10.1	10.1	10.1	10.1	10.1	10.1	10.1	10.1	10.1	10.1	10.1	12

**NOTE: This is automated data that may/may not agree with the official BAM thinking that's found on the daily slides or special visibility report slides. This data should be used as a guide only**

# Houston Pilots Wind Chart



Sustained wind 10 Knots  
 Gusts 15 Knots  
 Wind from the SE

**Example**

10  
15  
↖

Wind	Sun 11 pm	Mon 12 am	Mon 1 am	Mon 2 am	Mon 3 am	Mon 4 am	Mon 5 am	Mon 6 am	Mon 7 am	Mon 8 am	Mon 9 am	Mon 10 am	Mon 11 am	Mon 12 pm	Mon 1 pm	Mon 2 pm	Mon 3 pm	Mon 4 pm	Mon 5 pm	Mon 6 pm	Mon 7 pm	Mon 8 pm	Mon 9 pm	Mon 10 pm
Houston Pilots N - 610 Bridge	6 ↖	5 ↖	5 ↖	5 ↖	3 ↖	3 ↖	5 ↖	5 ↖	5 ↖	5 ↖	6 ↖	6 ↖	7 ↖	7 ↖	8 ↖	8 ↖	8 ↖	8 ↖	8 ↖	8 ↖	8 ↖	8 ↖	6 ↖	5 ↖
Houston Pilots M - Kinder 1	6 ↖	5 ↖	5 ↖	5 ↖	3 ↖	3 ↖	5 ↖	5 ↖	5 ↖	5 ↖	6 ↖	6 ↖	7 ↖	7 ↖	8 ↖	8 ↖	8 ↖	9 ↖	8 ↖	8 ↖	8 ↖	7 ↖	6 ↖	5 ↖
Houston Pilots L - Greens Bayou	6 ↖	5 ↖	5 ↖	5 ↖	3 ↖	3 ↖	5 ↖	5 ↖	5 ↖	5 ↖	6 ↖	6 ↖	6 ↖	7 ↖	8 ↖	8 ↖	8 ↖	9 ↖	8 ↖	8 ↖	8 ↖	7 ↖	6 ↖	5 ↖
Houston Pilots K - Shell Crude	6 ↖	6 ↖	5 ↖	5 ↖	3 ↖	3 ↖	5 ↖	5 ↖	5 ↖	5 ↖	6 ↖	6 ↖	7 ↖	7 ↖	8 ↖	8 ↖	8 ↖	9 ↖	8 ↖	8 ↖	8 ↖	7 ↖	6 ↖	5 ↖
Houston Pilots J - Lynchburg Ferries	6 ↖	5 ↖	3 ↖	3 ↖	3 ↖	3 ↖	3 ↖	3 ↖	3 ↖	5 ↖	6 ↖	6 ↖	6 ↖	7 ↖	8 ↖	8 ↖	8 ↖	8 ↖	8 ↖	8 ↖	8 ↖	6 ↖	6 ↖	3 ↖
Houston Pilots I - Exxon 3	10 ↖	10 ↖	9 ↖	9 ↖	8 ↖	8 ↖	8 ↖	8 ↖	8 ↖	9 ↖	9 ↖	9 ↖	9 ↖	9 ↖	10 ↖	12 ↖	12 ↖	13 ↖	13 ↖	12 ↖	10 ↖	10 ↖	9 ↖	8 ↖
Houston Pilots H - Morgans Point	10 ↖	10 ↖	10 ↖	9 ↖	9 ↖	9 ↖	9 ↖	8 ↖	8 ↖	9 ↖	9 ↖	9 ↖	9 ↖	9 ↖	10 ↖	10 ↖	12 ↖	13 ↖	12 ↖	12 ↖	12 ↖	10 ↖	9 ↖	8 ↖
Houston Pilots G - 75/76	13 ↖	12 ↖	12 ↖	12 ↖	10 ↖	10 ↖	10 ↖	10 ↖	10 ↖	10 ↖	10 ↖	10 ↖	10 ↖	10 ↖	10 ↖	12 ↖	12 ↖	13 ↖	13 ↖	12 ↖	12 ↖	10 ↖	10 ↖	9 ↖
Houston Pilots F - 63/64	13 ↖	12 ↖	12 ↖	12 ↖	10 ↖	10 ↖	10 ↖	10 ↖	10 ↖	10 ↖	10 ↖	10 ↖	10 ↖	10 ↖	10 ↖	12 ↖	12 ↖	12 ↖	12 ↖	12 ↖	12 ↖	10 ↖	10 ↖	9 ↖
Houston Pilots E - 51/52	13 ↖	13 ↖	13 ↖	12 ↖	10 ↖	10 ↖	10 ↖	10 ↖	10 ↖	10 ↖	10 ↖	10 ↖	10 ↖	10 ↖	10 ↖	12 ↖	12 ↖	12 ↖	12 ↖	12 ↖	12 ↖	10 ↖	10 ↖	9 ↖
Houston Pilots D - 37/38	13 ↖	13 ↖	12 ↖	12 ↖	10 ↖	10 ↖	10 ↖	10 ↖	9 ↖	9 ↖	9 ↖	9 ↖	9 ↖	9 ↖	10 ↖	10 ↖	10 ↖	10 ↖	10 ↖	10 ↖	10 ↖	10 ↖	10 ↖	9 ↖
Houston Pilots C - 25/26	12 ↖	12 ↖	12 ↖	10 ↖	10 ↖	10 ↖	9 ↖	9 ↖	9 ↖	9 ↖	9 ↖	9 ↖	9 ↖	9 ↖	10 ↖	10 ↖	10 ↖	10 ↖	10 ↖	10 ↖	10 ↖	10 ↖	9 ↖	9 ↖
Houston Pilots B - 11/12	10 ↖	10 ↖	10 ↖	9 ↖	8 ↖	8 ↖	8 ↖	8 ↖	8 ↖	8 ↖	8 ↖	8 ↖	8 ↖	8 ↖	9 ↖	9 ↖	10 ↖	10 ↖	10 ↖	10 ↖	10 ↖	10 ↖	9 ↖	8 ↖
Houston Pilots A - 1 & 2 Bravo	13 ↖	13 ↖	13 ↖	13 ↖	12 ↖	10 ↖	10 ↖	10 ↖	10 ↖	9 ↖	9 ↖	9 ↖	9 ↖	9 ↖	10 ↖	10 ↖	10 ↖	10 ↖	10 ↖	10 ↖	10 ↖	10 ↖	10 ↖	10 ↖

**NOTE: This is automated data that may/may not agree with the official BAM thinking that's found on the daily slides. This data should be used as a guide only.**

# Houston Pilots: MON. 8/26/2024



## Forecast Discussion

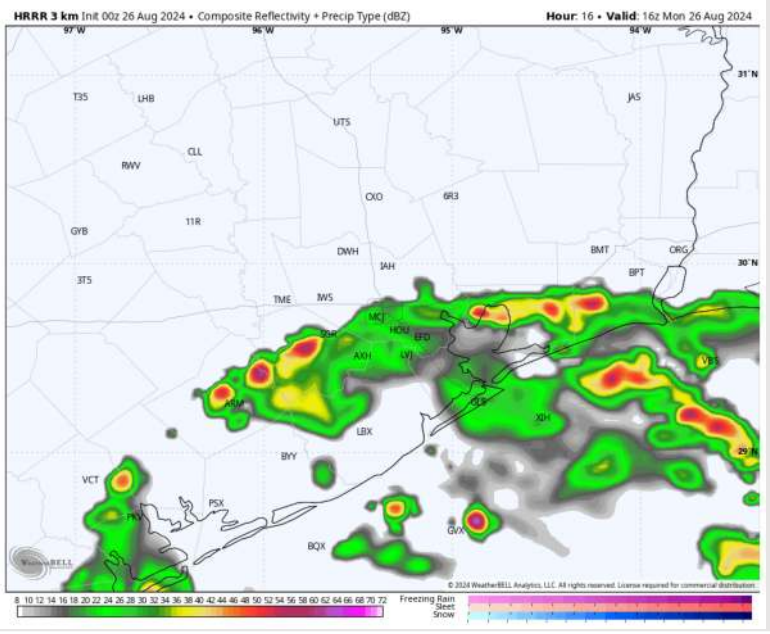
**Precip:** Scattered (40 - 50%) showers and storms in play for all Stations through 6 PM, greatest risk favored for 9AM – 12PM. Isolated (10%) showers can linger through 9PM before conditions dry out. Severe weather not favored, however **lightning and gusts of 25-30 kts will be possible with storms.**

**Wind:** Winds will be out of the S/SE throughout the day. **N of Morgan's Point:** Winds at 4 – 9 kts through Monday. **S of Morgan's Point:** Winds at 10 – 16 kts throughout the day.

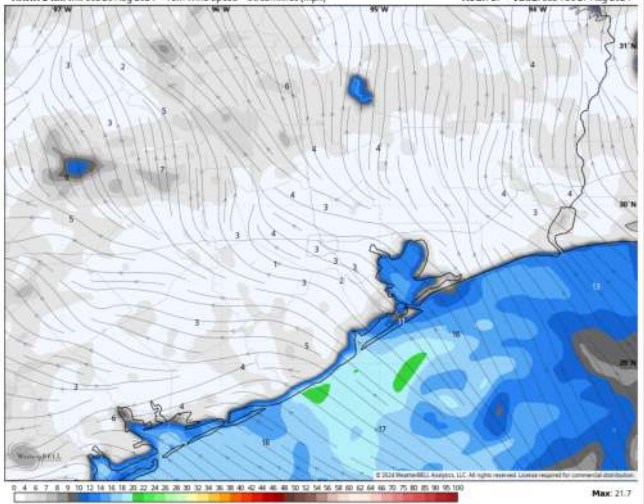
**High Temps:** **N of Morgan's Point:** Lower 90s F. **S of Morgan's Point:** Upper 80s F.

**Visibility:** Not anticipating any fog concerns today, however, visibilities can be reduced in heavy downpours.

## Precip Image: 11 AM CT

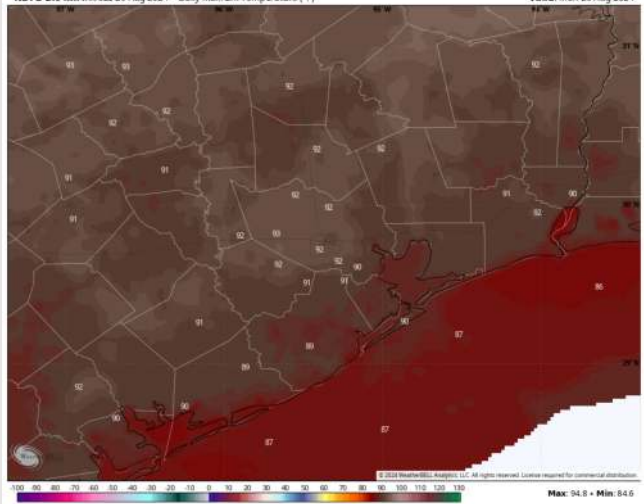


HRRR 3 km Init 00z 26 Aug 2024 • 10m Wind Speed + Streamlines (mph) Hour: 27 • Valid: 03z Tue 27 Aug 2024



Wind Speed  
10 PM CT

NDFD 2.5 km Init 02z 26 Aug 2024 • Daily Max. 2m Temperature (°F) Valid: Mon 26 Aug 2024



High Temps  
Today

# Houston Pilots: TUE. 8/27/2024



## Forecast Discussion

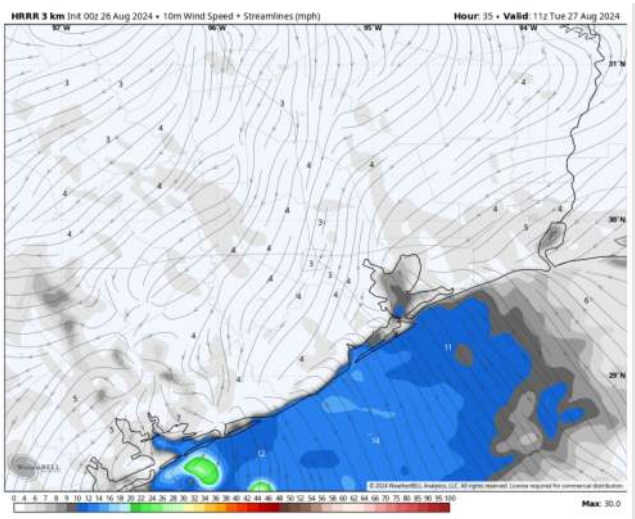
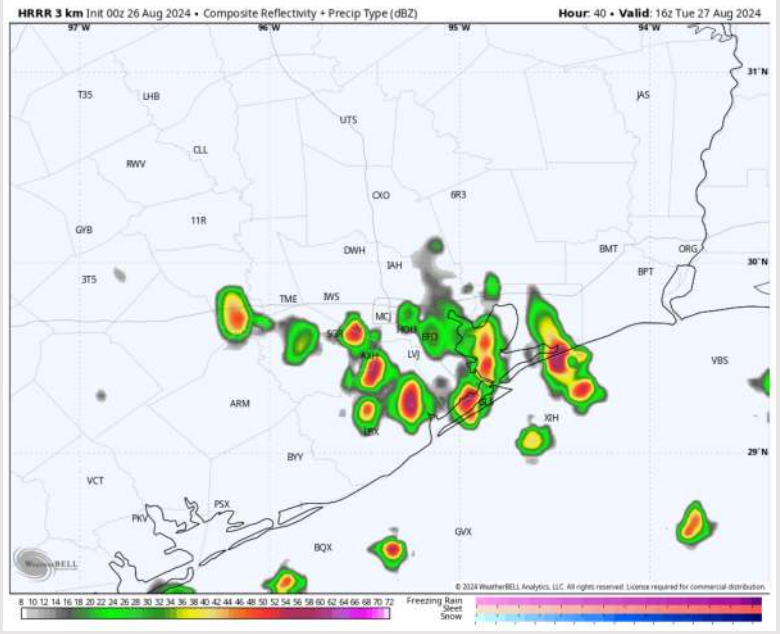
**Precip:** Favoring scattered-to-widespread (50-60%) showers/storms to work in from 5AM- 1PM. After 1PM scattered (20-30%) chances will linger through 5PM before conditions dry out.

**Wind:** Winds will be generally out of the E/SE throughout the day Tuesday. **N of Morgan's Point:** Winds will be at 3-8 kts throughout the day. **S of Morgan's Point:** Winds will be 5 - 10 kts through 4PM, before decreasing to 3 - 8. kts throughout the rest of the day.

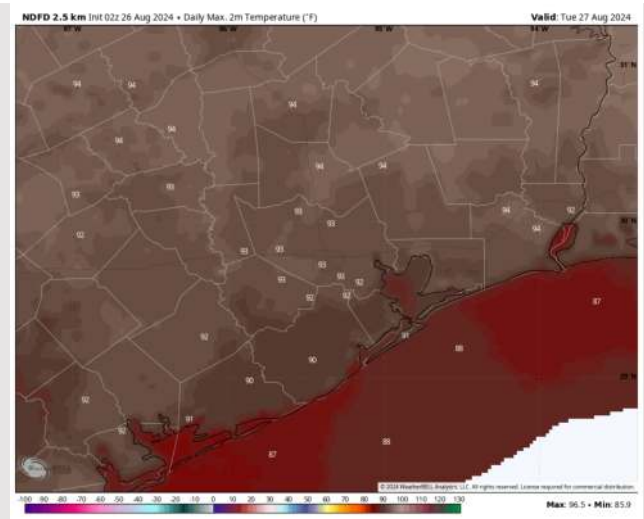
**High Temps:** **N of Morgan's Point:** Low/mid 90s F. **S of Morgan's Point:** Upper 80s to lower 90s F.

**Visibility:** Not favoring any fog concerns for Tuesday, however, visibilities can be reduced in heavy downpours.

## Precip Image: 11 AM CT



Wind Speed:  
6 AM CT



High Temps  
Tuesday

# Houston Pilots: WED. 8/28/2024



## Forecast Discussion

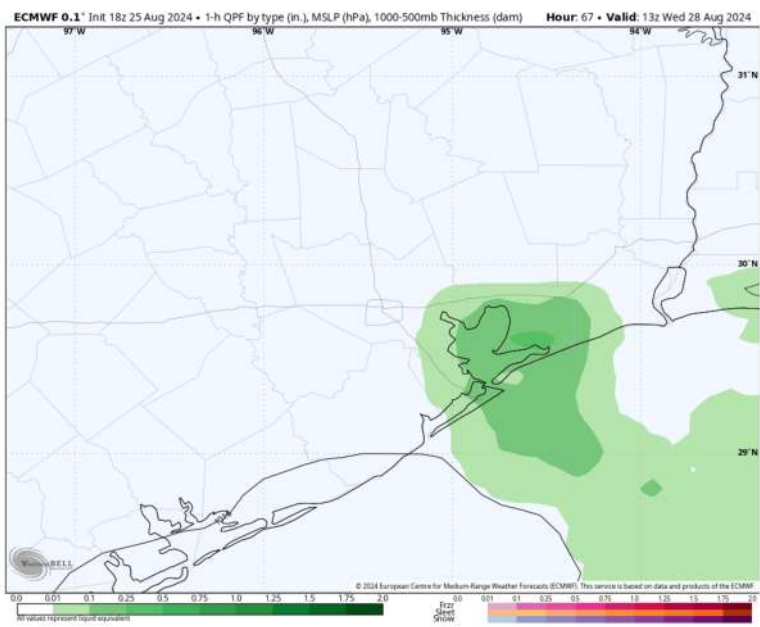
**Precip:** Scattered (20-30%) chances of showers will be possible from 8AM – 8PM, with the greatest risk being between 8AM – 1PM. Favoring dry conditions after 8PM.

**Wind:** Winds will be out of the SE throughout the day on Wednesday. **N of Morgan's Point:** Winds at 4 – 9 kts throughout the day. **S of Morgan's Point:** Winds at 2 – 7 kts through 7AM, before winds increase to 7 – 12 kts throughout the rest of the day.

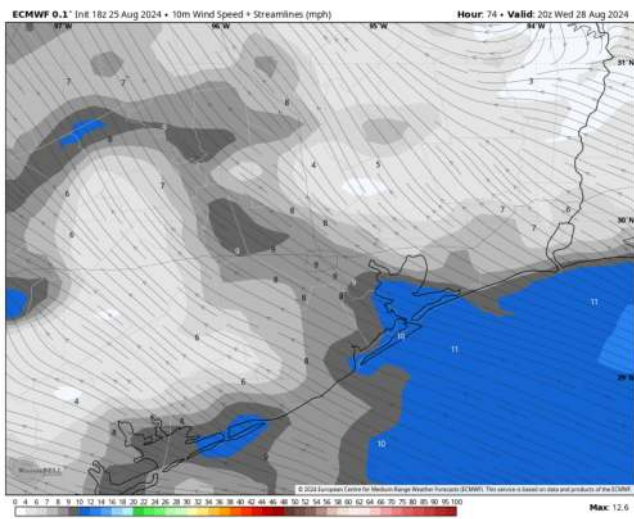
**High Temps:** **N of Morgan's Point:** Low/Mid 90s F. **S of Morgan's Point:** Near 90 F.

**Visibility:** Not anticipating any visibility concerns Wednesday, however, visibilities can be reduced in heavy downpours.

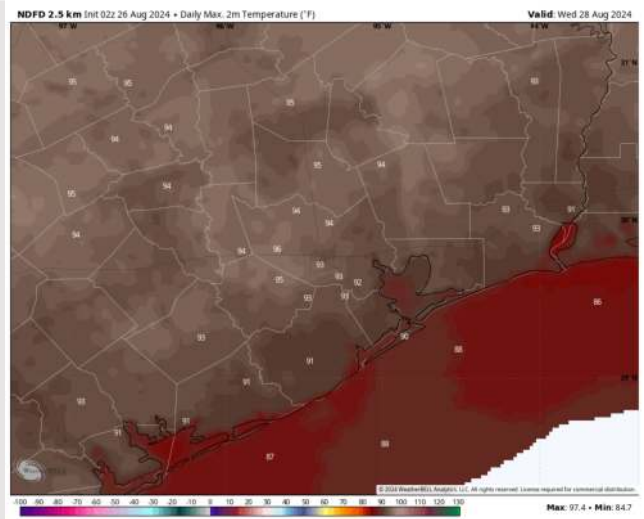
## Precip Image: 8 AM CT



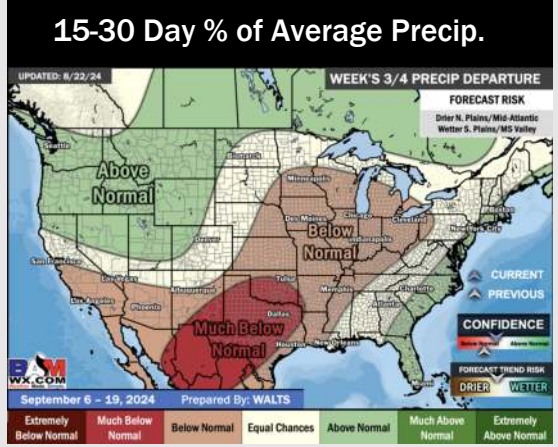
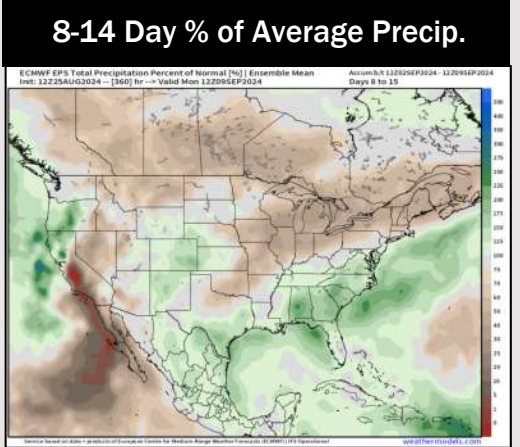
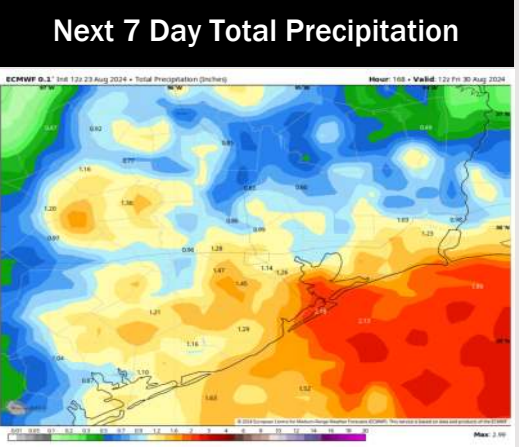
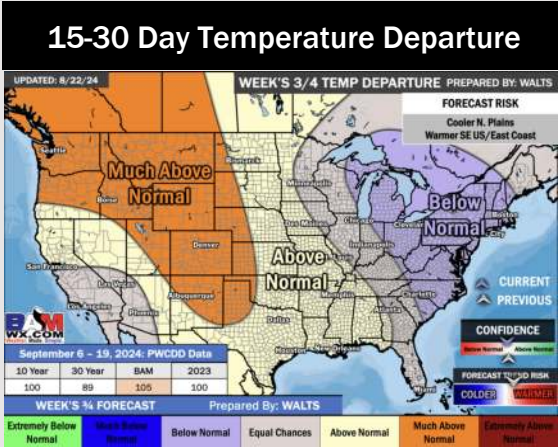
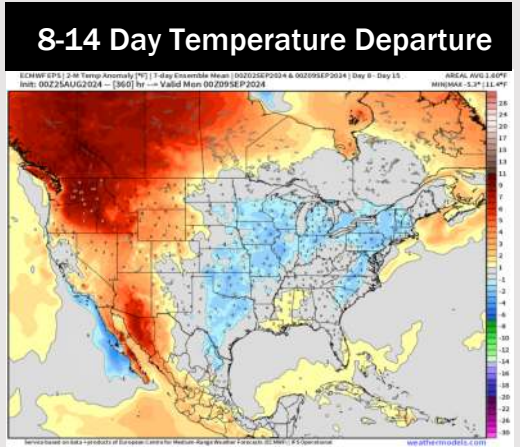
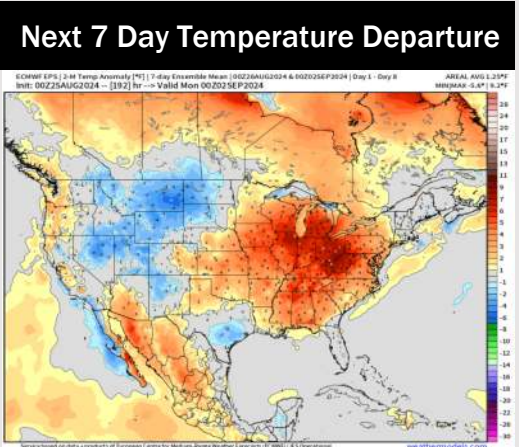
Wind Speed:  
3 PM CT



High Temps  
Wednesday



# Houston Pilots: 8/26/24



- Temps are expected to be near normal for the week 1 timeframe. Scattered rain chances are expected daily through the next week.
- Near normal temperatures are favored into week 2 with above normal rain chances.
- Above normal temperatures and much below average precipitation chances are expected for the weeks 3/4 timeframe. As we approach late August & going into September, Atlantic tropical activity looks to ramp up. We will be monitoring closely and providing updates as needed.