

# Houston Pilots Forecast Package



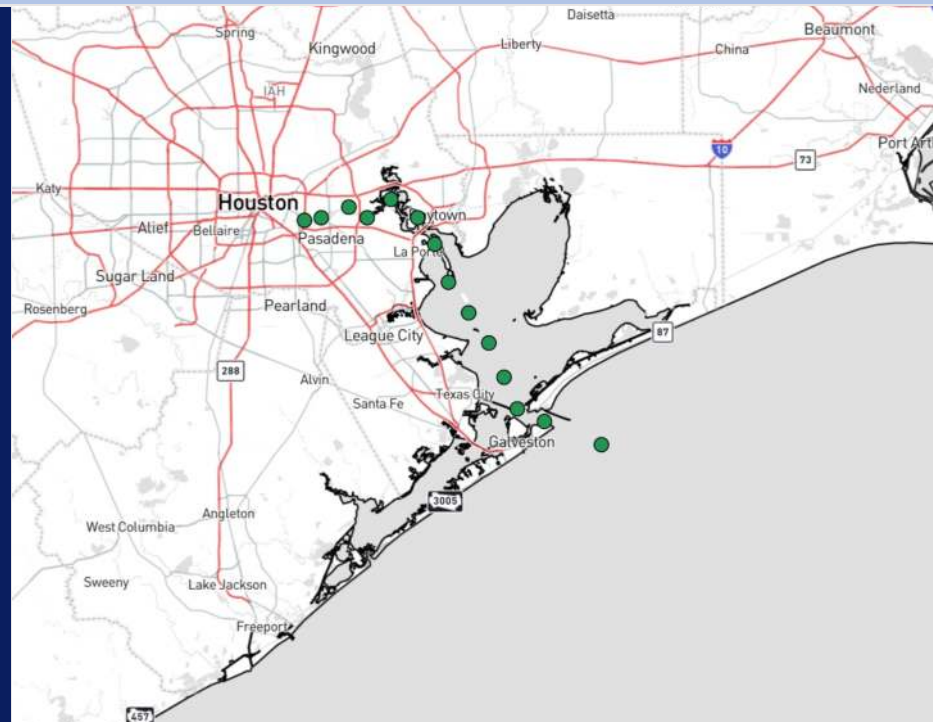
Updated: 10:30 PM CT

Saturday, August 24, 2024

Forecaster: Xander Lowry

## Weather Headlines

- Hit and miss to scattered showers and storms possible over the next few days, with **25-30 kt gusts in play.**
- Winds are expected to pick up today and Sunday with sustained winds up to **18 kts S of Morgan's Point.**
- Not favoring any fog risks over the next few days.



**Current Radar: 10:25 PM CT**



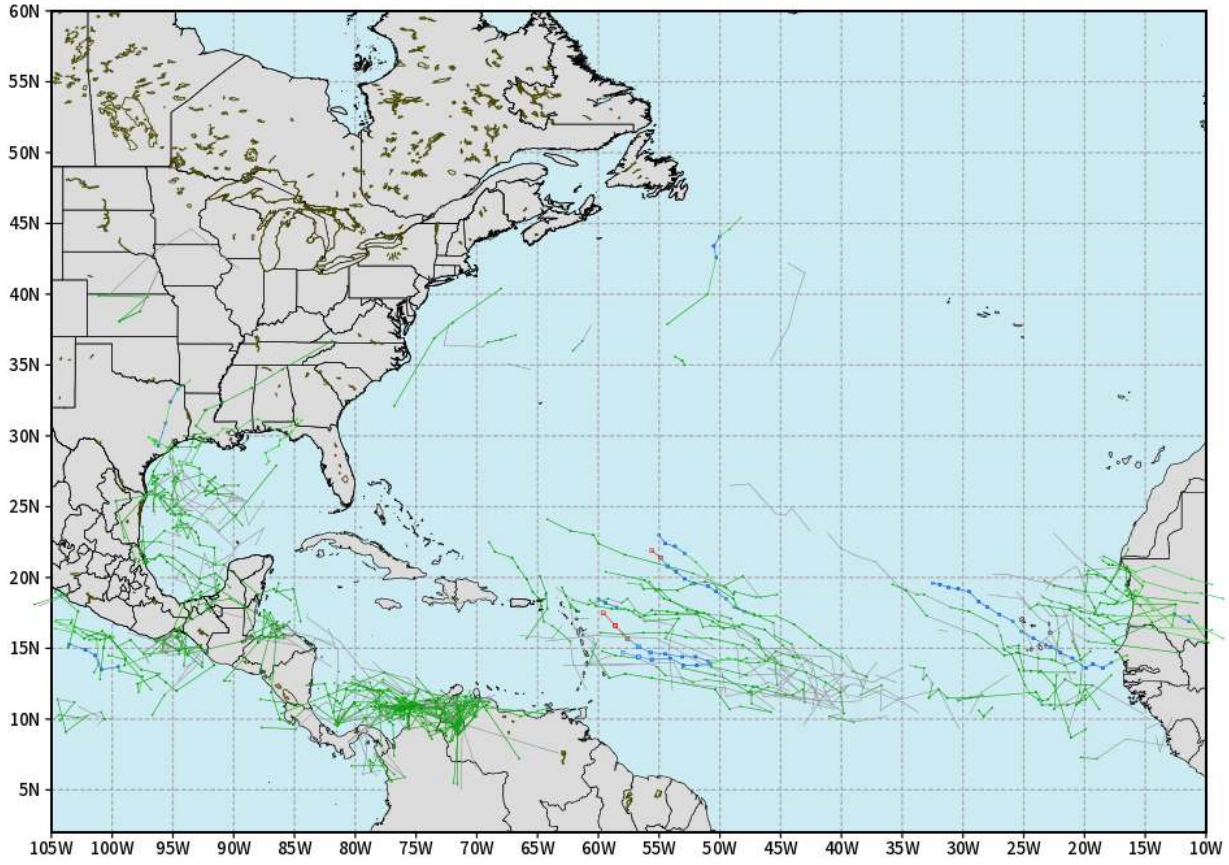
As always, please do not hesitate to reach out to us with any forecast questions via the chat option on Clarity or our on-call number, **(317)-560-8122** press **1** for forecast questions.

# Houston Pilots Tropical Update

## European Model Next 10 Days - Tropical Tracks

ECMWF ATLANTIC EPS Cyclone Locations --> Next [10-days]  
INIT: 12Z24AUG2024 --> UNTIL 12Z03SEP2024

o-o ENSEMBLE MEAN  
o-o 1000 - 1010 hPa  
o-o 980 - 999 hPa  
o-o 960 - 979 hPa  
o-o 950 - 959 hPa  
o-o < 950 hPa



weathermodels.com

Monitoring very low-end potential for development in the Gulf of Mexico, however not favoring any threats through at least the next 7 days.

Continuing to favor increase in tropical development potential towards beginning of September. Main area of focus just E of Lesser Antilles.

# Houston Pilots Visibility Chart (miles)



## Forecast Confidence



Visibility	Sun 12 am	Sun 1 am	Sun 2 am	Sun 3 am	Sun 4 am	Sun 5 am	Sun 6 am	Sun 7 am	Sun 8 am	Sun 9 am	Sun 10 am	Sun 11 am	Sun 12 pm	Sun 1 pm	Sun 2 pm	Sun 3 pm	Sun 4 pm	Sun 5 pm	Sun 6 pm	Sun 7 pm	Sun 8 pm	Sun 9 pm	Sun 10 pm	Sun 11 pm	
Houston Pilots N - 610 Bridge	10.1	10.1	10.1	10.1	10.1	10.1	10.1	10.1	10.1	10.1	10.1	10.1	10.1	10.1	10.1	10.1	10.1	10.1	10.1	10.1	10.1	10.1	10.1	10.1	
Houston Pilots M - Kinder 1	10.1	10.1	10.1	10.1	10.1	10.1	10.1	10.1	10.1	10.1	10.1	10.1	10.1	10.1	10.1	10.1	10.1	10.1	10.1	10.1	10.1	10.1	10.1	10.1	
Houston Pilots L - Greens Bayou	10.1	10.1	10.1	10.1	10.1	10.1	10.1	10.1	10.1	10.1	10.1	10.1	10.1	10.1	10.1	10.1	10.1	10.1	10.1	10.1	10.1	10.1	10.1	10.1	
Houston Pilots K - Shell Crude	10.1	10.1	10.1	10.1	10.1	10.1	10.1	10.1	10.1	10.1	10.1	10.1	10.1	10.1	10.1	10.1	10.1	10.1	10.1	10.1	10.1	10.1	10.1	10.1	
Houston Pilots J - Lynchburg Ferries	10.1	10.1	10.1	10.1	10.1	10.1	10.1	10.1	10.1	10.1	10.1	10.1	10.1	10.1	10.1	10.1	10.1	10.1	10.1	10.1	10.1	10.1	10.1	10.1	
Houston Pilots I - Exxon 3	10.1	10.1	10.1	10.1	10.1	10.1	10.1	10.1	10.1	10.1	10.1	10.1	10.1	10.1	10.1	10.1	10.1	10.1	10.1	10.1	10.1	10.1	10.1	10.1	
Houston Pilots H - Morgans Point	10.1	10.1	10.1	10.1	10.1	10.1	10.1	10.1	10.1	10.1	10.1	10.1	10.1	10.1	10.1	10.1	10.1	10.1	10.1	10.1	10.1	10.1	10.1	10.1	
Houston Pilots G - 75/76	10.1	10.1	10.1	10.1	10.1	10.1	10.1	10.1	10.1	10.1	10.1	10.1	10.1	10.1	10.1	10.1	10.1	10.1	10.1	10.1	10.1	10.1	12	12	12
Houston Pilots F - 63/64	10.1	10.1	10.1	10.1	10.1	10.1	10.1	10.1	10.1	10.1	10.1	10.1	10.1	10.1	10.1	10.1	10.1	10.1	10.1	10.1	10.1	10.1	12	12	12
Houston Pilots E - 51/52	10.1	10.1	10.1	10.1	10.1	10.1	10.1	10.1	10.1	10.1	10.1	10.1	10.1	10.1	10.1	10.1	10.1	10.1	10.1	10.1	10.1	10.1	12	12	12
Houston Pilots D - 37/38	10.1	10.1	10.1	10.1	10.1	10.1	10.1	10.1	10.1	10.1	10.1	10.1	10.1	10.1	10.1	10.1	10.1	10.1	10.1	10.1	10.1	10.1	12	17	12
Houston Pilots C - 25/26	10.1	10.1	10.1	10.1	10.1	10.1	10.1	10.1	10.1	10.1	10.1	10.1	10.1	10.1	10.1	10.1	10.1	10.1	10.1	10.1	10.1	10.1	17	17	12
Houston Pilots B - 11/12	10.1	10.1	10.1	10.1	10.1	10.1	10.1	10.1	10.1	10.1	10.1	10.1	10.1	10.1	10.1	10.1	10.1	10.1	10.1	10.1	10.1	10.1	17	17	12
Houston Pilots A - 1 & 2 Bravo	10.1	10.1	10.1	10.1	10.1	10.1	10.1	10.1	10.1	10.1	10.1	10.1	10.1	10.1	10.1	10.1	10.1	10.1	10.1	10.1	10.1	10.1	17	17	12

**NOTE: This is automated data that may/may not agree with the official BAM thinking that's found on the daily slides or special visibility report slides. This data should be used as a guide only**

# Houston Pilots Wind Chart



**Forecast Confidence**

Above Normal Below Normal

Sustained wind 10 Knots

Gusts 15 Knots

Wind from the SE

**Example**

10

15

↖

Wind	Sun 12 am	Sun 1 am	Sun 2 am	Sun 3 am	Sun 4 am	Sun 5 am	Sun 6 am	Sun 7 am	Sun 8 am	Sun 9 am	Sun 10 am	Sun 11 am	Sun 12 pm	Sun 1 pm	Sun 2 pm	Sun 3 pm	Sun 4 pm	Sun 5 pm	Sun 6 pm	Sun 7 pm	Sun 8 pm	Sun 9 pm	Sun 10 pm	Sun 11 pm
Houston Pilots N - 610 Bridge	3 8 ↖	3 7 ↖	3 6 ↖	2 6 ↖	2 6 ↓	3 6 ↓	3 7 ↓	3 7 ↓	3 8 ↓	5 9 ↓	6 12 ↖	7 14 ↖	8 15 ↖	8 17 ↖	8 17 ↖	9 20 ↖	10 20 ↖	10 20 ↖	10 20 ↖	9 18 ↖	9 17 ↖	8 15 ↖	7 14 ↖	6 13 ↖
Houston Pilots M - Kinder 1	3 8 ↖	3 7 ↖	3 6 ↖	2 6 ↖	2 6 ↓	3 6 ↓	3 7 ↓	3 8 ↓	3 8 ↓	5 10 ↓	6 12 ↖	7 14 ↖	8 15 ↖	8 17 ↖	8 17 ↖	9 20 ↖	10 20 ↖	10 20 ↖	10 20 ↖	9 18 ↖	8 17 ↖	8 15 ↖	7 14 ↖	6 13 ↖
Houston Pilots L - Greens Bayou	3 8 ↖	3 7 ↖	3 6 ↖	2 6 ↖	2 6 ↓	3 6 ↓	3 7 ↓	3 8 ↓	3 9 ↓	5 10 ↓	6 12 ↖	6 14 ↖	7 15 ↖	8 16 ↖	8 17 ↖	9 18 ↖	9 20 ↖	9 18 ↖	9 18 ↖	9 17 ↖	8 16 ↖	8 15 ↖	6 14 ↖	6 13 ↖
Houston Pilots K - Shell Crude	3 8 ↖	3 7 ↖	3 7 ↖	3 6 ↖	3 6 ↓	3 7 ↓	3 7 ↓	3 8 ↓	3 9 ↓	5 10 ↓	6 12 ↖	7 14 ↖	8 15 ↖	8 16 ↖	8 17 ↖	9 18 ↖	9 20 ↖	9 18 ↖	9 18 ↖	9 17 ↖	8 16 ↖	8 15 ↖	6 14 ↖	6 13 ↖
Houston Pilots J - Lynchburg Ferries	3 8 ↖	3 7 ↖	2 6 ↖	2 6 ↖	2 6 ↓	2 6 ↓	3 7 ↓	3 7 ↓	3 8 ↓	5 10 ↓	6 12 ↖	6 14 ↖	7 15 ↖	8 16 ↖	8 17 ↖	9 17 ↖	9 18 ↖	9 18 ↖	9 18 ↖	9 17 ↖	8 16 ↖	7 15 ↖	6 14 ↖	6 13 ↖
Houston Pilots I - Exxon 3	8 12 ↖	7 10 ↖	7 9 ↖	6 9 ↖	6 9 ↖	6 9 ↖	7 9 ↖	7 10 ↖	8 12 ↖	8 13 ↖	8 14 ↖	9 15 ↖	10 15 ↖	10 17 ↖	12 18 ↖	13 20 ↖	13 20 ↖	13 21 ↖	13 20 ↖	13 20 ↖	13 17 ↖	12 16 ↖	12 15 ↖	10 15 ↖
Houston Pilots H - Morgans Point	8 12 ↖	8 12 ↖	7 10 ↖	7 10 ↖	7 9 ↖	6 9 ↖	7 10 ↖	7 10 ↖	8 12 ↖	8 13 ↖	9 14 ↖	9 15 ↖	10 17 ↖	10 17 ↖	12 18 ↖	13 20 ↖	13 20 ↖	13 21 ↖	13 20 ↖	13 20 ↖	13 17 ↖	13 16 ↖	12 16 ↖	10 15 ↖
Houston Pilots G - 75/76	10 14 ↖	9 14 ↖	9 13 ↖	8 13 ↖	8 12 ↖	8 12 ↖	8 13 ↖	8 13 ↖	9 14 ↖	10 15 ↖	10 15 ↖	10 16 ↖	10 17 ↖	10 17 ↖	12 18 ↖	13 20 ↖	13 20 ↖	13 21 ↖	14 20 ↖	14 20 ↖	13 18 ↖	13 17 ↖	13 17 ↖	13 17 ↖
Houston Pilots F - 63/64	10 15 ↖	10 14 ↖	9 14 ↖	9 13 ↖	8 13 ↖	8 13 ↖	8 13 ↖	9 14 ↖	9 14 ↖	10 15 ↖	10 15 ↖	10 17 ↖	10 17 ↖	10 17 ↖	12 18 ↖	13 20 ↖	13 20 ↖	14 22 ↖	14 21 ↖	14 20 ↖	13 18 ↖	13 18 ↖	13 18 ↖	13 17 ↖
Houston Pilots E - 51/52	10 15 ↖	10 15 ↖	10 15 ↖	9 14 ↖	9 14 ↖	8 13 ↖	9 14 ↖	9 14 ↖	9 14 ↖	10 15 ↖	10 16 ↖	12 17 ↖	12 18 ↖	12 18 ↖	13 20 ↖	13 20 ↖	14 21 ↖	14 22 ↖	14 21 ↖	14 20 ↖	13 20 ↖	13 18 ↖	13 18 ↖	13 18 ↖
Houston Pilots D - 37/38	10 15 ↖	10 15 ↖	10 15 ↖	10 15 ↖	9 14 ↖	9 14 ↖	9 14 ↖	9 14 ↖	9 15 ↖	10 16 ↖	10 16 ↖	12 17 ↖	13 18 ↖	13 18 ↖	13 20 ↖	13 20 ↖	14 21 ↖	14 22 ↖	14 21 ↖	14 20 ↖	13 20 ↖	13 18 ↖	13 18 ↖	13 18 ↖
Houston Pilots C - 25/26	10 15 ↖	10 15 ↖	10 15 ↖	9 15 ↖	9 14 ↖	8 14 ↖	9 14 ↖	9 14 ↖	9 15 ↖	10 16 ↖	10 16 ↖	12 17 ↖	13 18 ↖	13 20 ↖	13 20 ↖	13 20 ↖	14 21 ↖	14 22 ↖	14 21 ↖	14 20 ↖	13 20 ↖	13 18 ↖	13 18 ↖	13 17 ↖
Houston Pilots B - 11/12	9 15 ↖	9 15 ↖	9 15 ↖	8 15 ↖	8 15 ↖	8 14 ↖	8 14 ↖	8 14 ↖	8 15 ↖	9 16 ↖	10 16 ↖	10 17 ↖	12 18 ↖	13 20 ↖	13 21 ↖	13 21 ↖	13 21 ↖	13 22 ↖	13 21 ↖	13 20 ↖	12 20 ↖	10 18 ↖	10 17 ↖	10 17 ↖
Houston Pilots A - 1 & 2 Bravo	12 17 ↖	12 17 ↖	12 17 ↖	12 16 ↖	10 16 ↖	10 15 ↖	10 15 ↖	10 15 ↖	10 16 ↖	12 17 ↖	13 18 ↖	13 21 ↖	14 21 ↖	14 22 ↖	15 22 ↖	15 22 ↖	15 22 ↖	15 22 ↖	15 22 ↖	15 22 ↖	14 21 ↖	13 20 ↖	13 20 ↖	13 20 ↖

**NOTE: This is automated data that may/may not agree with the official BAM thinking that's found on the daily slides. This data should be used as a guide only.**

# Houston Pilots: SUN. 8/25/2024



## Forecast Discussion

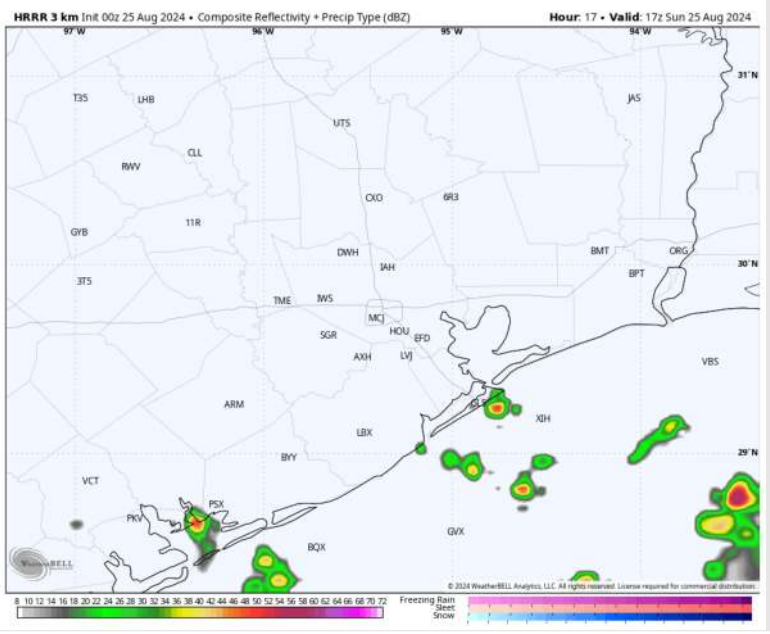
**Precip:** Showers and storms (20-30%) work in throughout the PM hours. Risks begin for Stations S of Morgan's Point after 11 AM, and for all Stations after 3 PM. **Lightning and 25-30 kts winds likely with storms.**

**Wind:** Winds will be variable through 9 AM and settle out of the NE at that time. Winds then shift out of the SE by 3 PM. **N of Morgan's Point:** Winds at 3-8 kts through 1 PM before a slight increase to 6-11 kts. **S of Morgan's Point:** Winds at 10 - 15 kts through 1 PM before increasing to 13-18 kts from 1-9 PM. Winds decrease back to 10-15 kts after 9 PM.

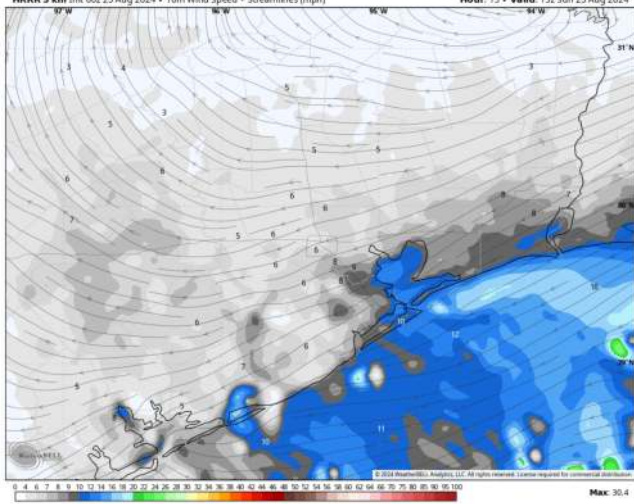
**High Temps:** **N of Morgan's Point:** Low/Mid 90s F. **S of Morgan's Point:** Upper 80s F.

**Visibility:** Not anticipating any visibility concerns Today.

## Precip Image: 12 PM CT

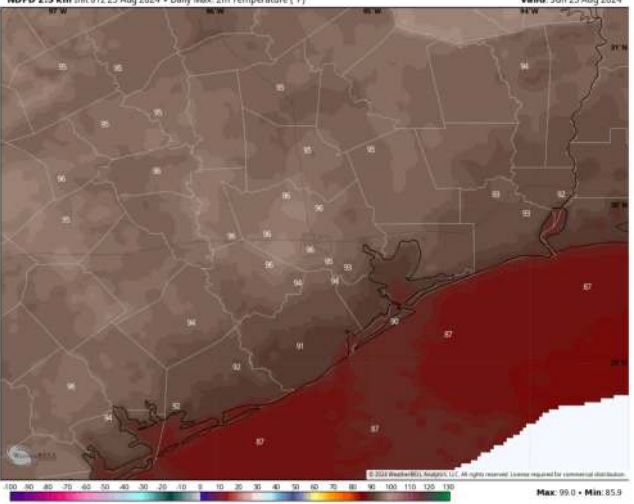


HRRR 3 km Init 00z 25 Aug 2024 • 10m Wind Speed • Streamlines (mph) Hour: 15 • Valid: 15z Sun 25 Aug 2024



Wind Speed:  
10 AM CT

NDFD 2.5 km Init 01z 25 Aug 2024 • Daily Max. 2m Temperature (°F) Valid: Sun 25 Aug 2024



High Temps  
Today

# Houston Pilots: MON. 8/26/2024



## Forecast Discussion

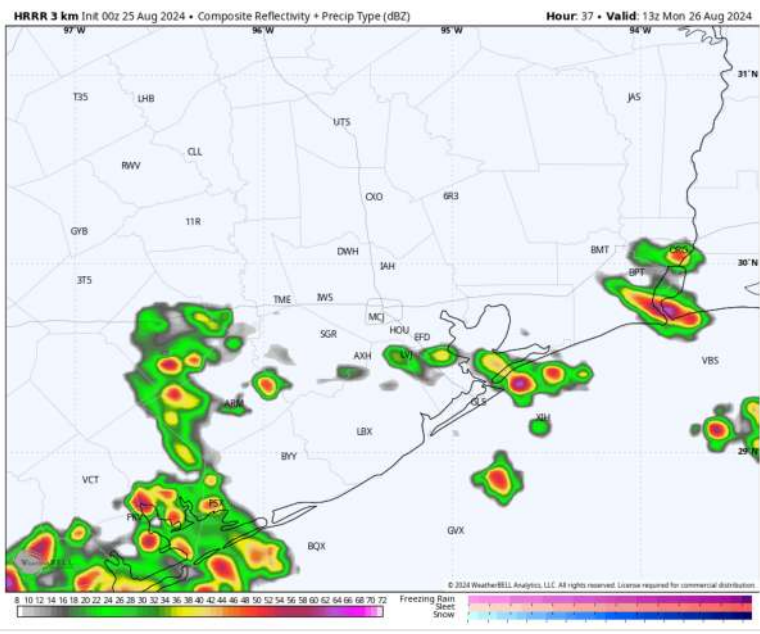
**Precip:** Scattered showers and storms in play for all Stations through 6 PM. Severe weather not favored, however lightning and gusts of 25-30 kts will be possible with storms.

**Wind:** Winds will be out of the S/SE throughout the day on Monday. **N of Morgan's Point:** Winds at 4-9 kts through Monday. **S of Morgan's Point:** Winds at 8-13 kts throughout Monday.

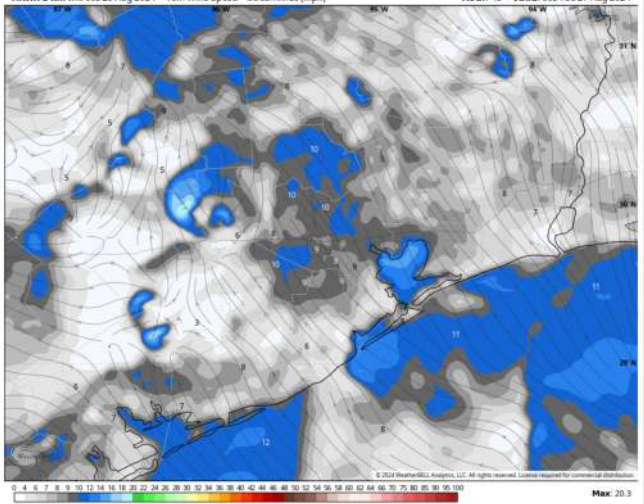
**High Temps:** **N of Morgan's Point:** Low/Mid 90s F. **S of Morgan's Point:** Upper 80s F.

**Visibility:** Not anticipating any visibility concerns on Monday.

## Precip Image: 8 AM CT

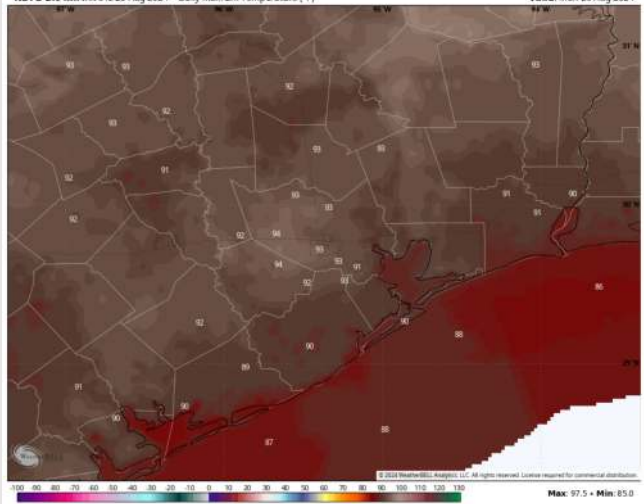


HRRR 3 km Init 00z 25 Aug 2024 • 10m Wind Speed + Streamlines (mph) Hour: 46 • Valid: 00z Tue 27 Aug 2024



Wind Speed  
7 PM CT

NDFD 2.5 km Init 01z 25 Aug 2024 • Daily Max. 2m Temperature (°F) Valid: Mon 26 Aug 2024



High Temps  
Monday

# Houston Pilots: TUE. 8/27/2024



## Forecast Discussion

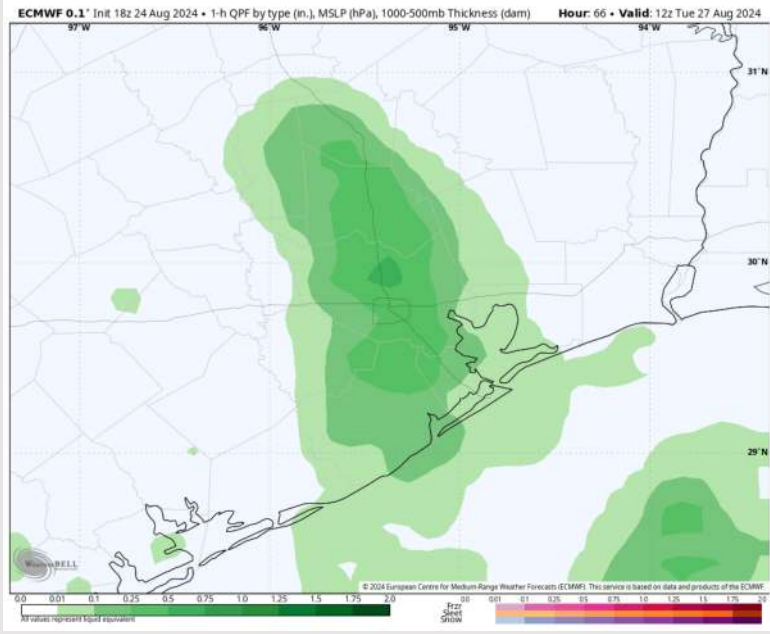
**Precip:** Favoring widespread showers/storms to work in from 5AM – 10A. Favoring dry conditions through 4PM before isolated (20%) chances work back in through 8PM. Favoring dry after 8PM.

**Wind:** Winds will be out of the SE throughout the day Tuesday. **N of Morgan's Point:** Winds will be at 3-8 kts throughout the day. **S of Morgan's Point:** Winds will be 5-10 kts throughout the day on Tuesday.

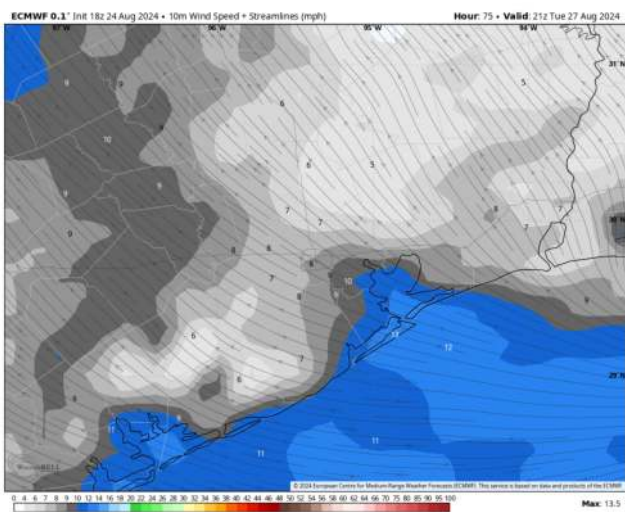
**High Temps:** **N of Morgan's Point:** Low/Mid 90 F. **S of Morgan's Point:** Upper 80s F.

**Visibility:** Not favoring any visibility concerns for Tuesday.

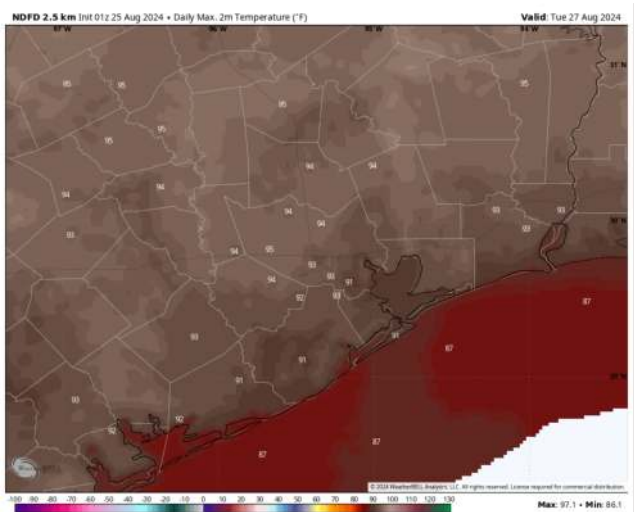
## Precip Image: 7 AM CT



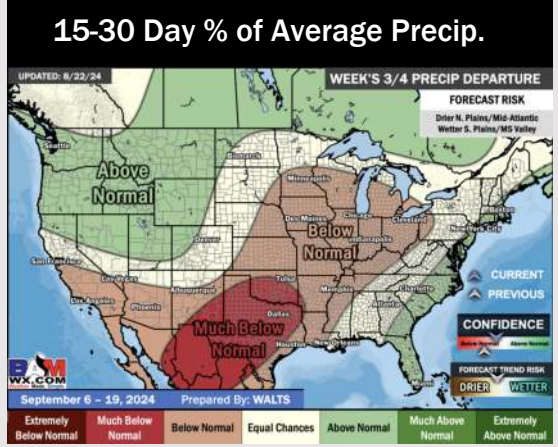
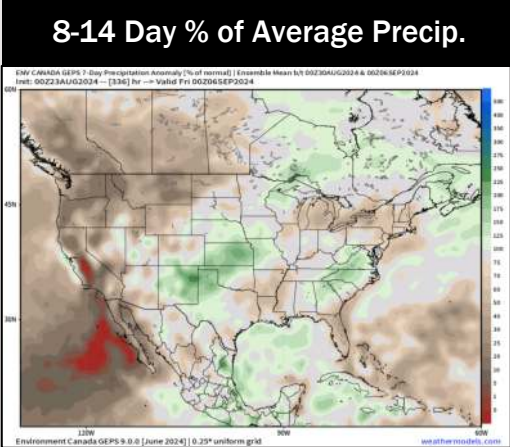
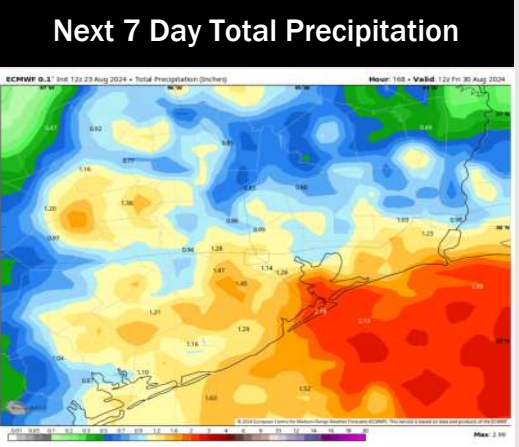
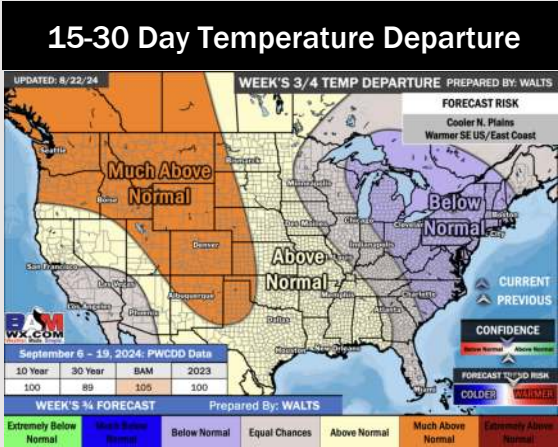
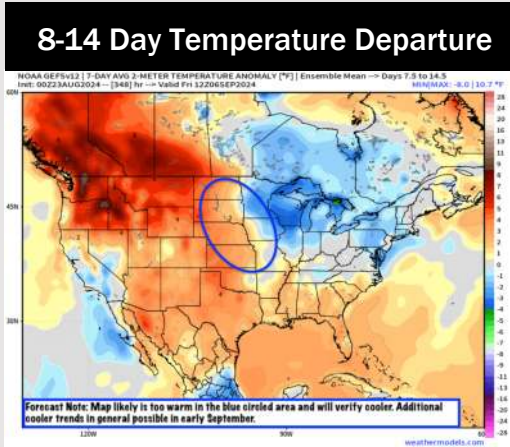
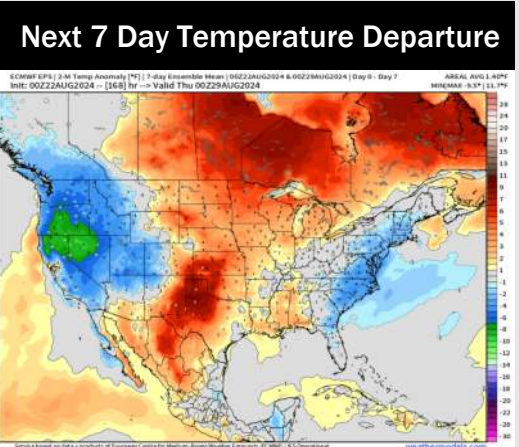
Wind Speed:  
4 PM CT



High Temps  
Tuesday



# Houston Pilots: 8/25/24



- Temps are expected to be near normal for the week 1 timeframe. Although more dry time than not, a few hit/miss rain chances are expected daily.
- Above average temperatures and near normal precipitation chances are favored for the week 2 timeframe.
- Above normal temperatures and much below average precipitation chances are expected for the weeks ¾ timeframe. As we approach late August & going into September, Atlantic tropical activity looks to ramp up. We will be monitoring closely and providing updates as needed.