

Houston Pilots Forecast Package



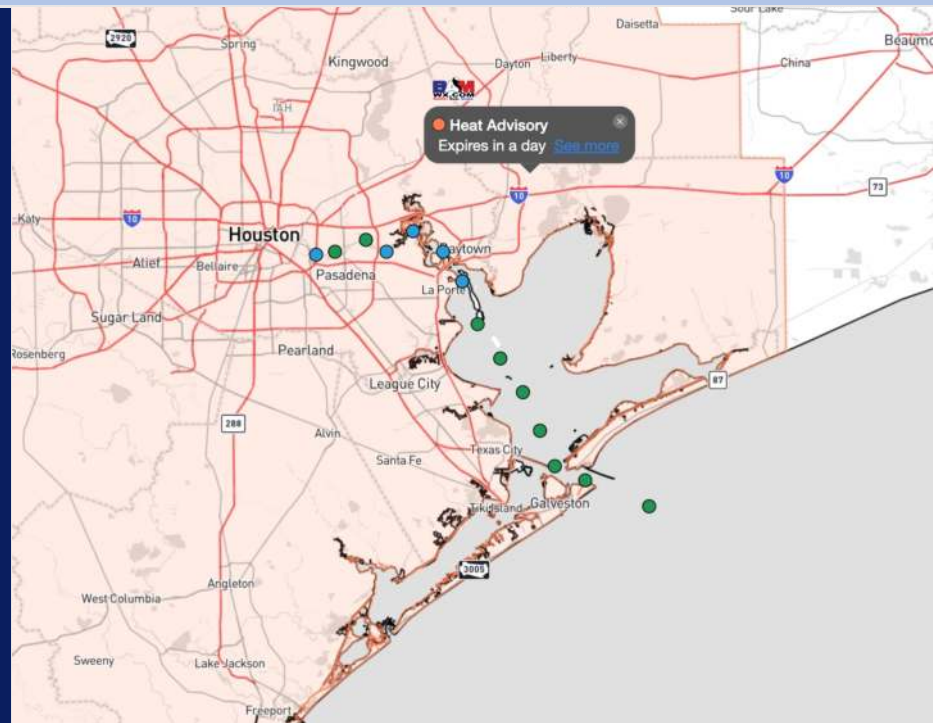
Updated: 11:00 PM CT

Wednesday, August 21, 2024

Forecaster: John Kemper

Weather Headlines

- A few stronger gusts of 30-40 kts associated with Isolated Storms this AM can't be ruled out.
- Not favoring any fog risks over the next few days.
- High temperatures expected to reach into the 100s today.



Current Radar: 10:50 PM CT



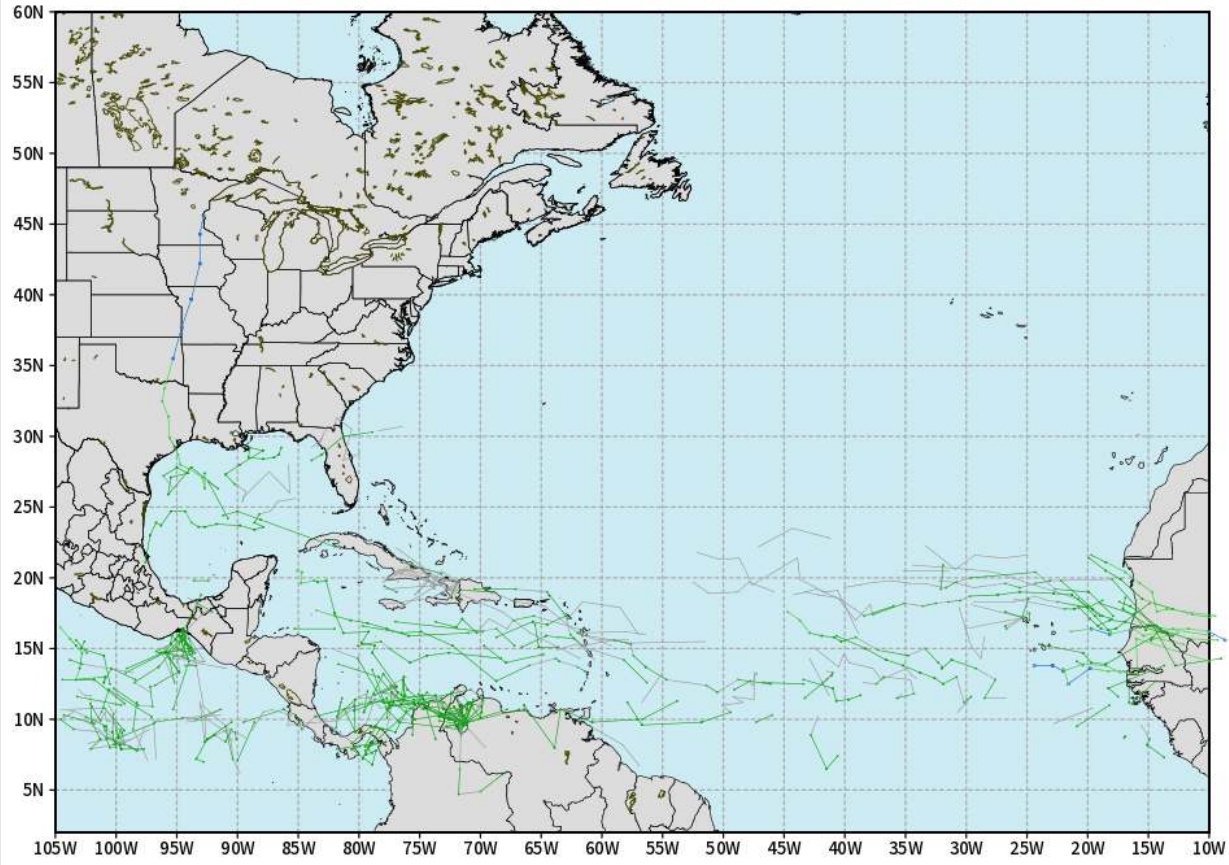
As always, please do not hesitate to reach out to us with any forecast questions via the chat option on Clarity or our on-call number, **(317)-560-8122** press **1** for forecast questions.

Houston Pilots Tropical Update

European Model Next 10 Days - Tropical Tracks

ECMWF ATLANTIC EPS Cyclone Locations --> Next [10-days]
INIT: 12Z21AUG2024 --> UNTIL 12Z31AUG2024

o-o ENSEMBLE MEAN
o-o 1000 - 1010 hPa
o-o 980 - 999 hPa
o-o 960 - 979 hPa
o-o 950 - 959 hPa
o-o < 950 hPa



weathermodels.com

Not favoring any threats in the Gulf of Mexico through at least the next 7 days.

Continuing to favor increase in tropical development towards end of August. Main area of focus just E of Lesser Antilles.

Houston Pilots Visibility Chart (miles)



Forecast Confidence



Visibility	Thu 12 am	Thu 1 am	Thu 2 am	Thu 3 am	Thu 4 am	Thu 5 am	Thu 6 am	Thu 7 am	Thu 8 am	Thu 9 am	Thu 10 am	Thu 11 am	Thu 12 pm	Thu 1 pm	Thu 2 pm	Thu 3 pm	Thu 4 pm	Thu 5 pm	Thu 6 pm	Thu 7 pm	Thu 8 pm	Thu 9 pm	Thu 10 pm	Thu 11 pm
Houston Pilots N - 610 Bridge	10.1	10.1	10.1	10.1	10.1	10.1	10.1	10.1	10.1	10.1	10.1	10.1	10.1	10.1	10.1	10.1	10.1	10.1	10.1	10.1	10.1	10.1	10.1	10.1
Houston Pilots M - Kinder 1	10.1	10.1	10.1	10.1	10.1	10.1	10.1	10.1	10.1	10.1	10.1	10.1	10.1	10.1	10.1	10.1	10.1	10.1	10.1	10.1	10.1	10.1	10.1	10.1
Houston Pilots L - Greens Bayou	10.1	10.1	10.1	10.1	10.1	10.1	10.1	10.1	10.1	10.1	10.1	10.1	10.1	10.1	10.1	10.1	10.1	10.1	10.1	10.1	10.1	10.1	10.1	10.1
Houston Pilots K - Shell Crude	10.1	10.1	10.1	10.1	10.1	10.1	10.1	10.1	10.1	10.1	10.1	10.1	10.1	10.1	10.1	10.1	10.1	10.1	10.1	10.1	10.1	10.1	10.1	10.1
Houston Pilots J - Lynchburg Ferries	10.1	10.1	10.1	10.1	10.1	10.1	10.1	10.1	10.1	10.1	10.1	10.1	10.1	10.1	10.1	10.1	10.1	10.1	10.1	10.1	10.1	10.1	10.1	10.1
Houston Pilots I - Exxon 3	10.1	10.1	10.1	10.1	10.1	10.1	10.1	10.1	10.1	10.1	10.1	10.1	10.1	10.1	10.1	10.1	10.1	10.1	10.1	10.1	10.1	10.1	10.1	10.1
Houston Pilots H - Morgans Point	10.1	10.1	10.1	10.1	10.1	10.1	10.1	10.1	10.1	10.1	10.1	10.1	10.1	10.1	10.1	10.1	10.1	10.1	10.1	10.1	10.1	10.1	10.1	10.1
Houston Pilots G - 75/76	10.1	10.1	10.1	10.1	10.1	10.1	10.1	10.1	10.1	10.1	10.1	10.1	10.1	10.1	10.1	10.1	10.1	10.1	10.1	10.1	10.1	10.1	10.1	12
Houston Pilots F - 63/64	10.1	10.1	10.1	10.1	10.1	10.1	10.1	10.1	10.1	10.1	10.1	10.1	10.1	10.1	10.1	10.1	10.1	10.1	10.1	10.1	10.1	10.1	10.1	12
Houston Pilots E - 51/52	10.1	10.1	10.1	10.1	10.1	10.1	10.1	10.1	10.1	10.1	10.1	10.1	10.1	10.1	10.1	10.1	10.1	10.1	10.1	10.1	10.1	10.1	10.1	12
Houston Pilots D - 37/38	10.1	10.1	10.1	10.1	10.1	10.1	10.1	10.1	10.1	10.1	10.1	10.1	10.1	10.1	10.1	10.1	10.1	10.1	10.1	10.1	10.1	10.1	10.1	12
Houston Pilots C - 25/26	10.1	10.1	10.1	10.1	10.1	10.1	10.1	10.1	10.1	10.1	10.1	10.1	10.1	10.1	10.1	10.1	10.1	10.1	10.1	10.1	10.1	10.1	10.1	12
Houston Pilots B - 11/12	10.1	10.1	10.1	10.1	10.1	10.1	10.1	10.1	10.1	10.1	10.1	10.1	10.1	10.1	10.1	10.1	10.1	10.1	10.1	10.1	10.1	10.1	10.1	12
Houston Pilots A - 1 & 2 Bravo	10.1	10.1	10.1	10.1	10.1	10.1	10.1	10.1	10.1	10.1	10.1	10.1	10.1	10.1	10.1	10.1	10.1	10.1	10.1	10.1	10.1	10.1	10.1	12

NOTE: This is automated data that may/may not agree with the official BAM thinking that's found on the daily slides or special visibility report slides. This data should be used as a guide only

Houston Pilots Wind Chart



Forecast Confidence

Above Normal Below Normal

Sustained wind 10 Knots

Gusts 15 Knots

Wind from the SE

Example

10

15

↖

Wind	Thu 12 am	Thu 1 am	Thu 2 am	Thu 3 am	Thu 4 am	Thu 5 am	Thu 6 am	Thu 7 am	Thu 8 am	Thu 9 am	Thu 10 am	Thu 11 am	Thu 12 pm	Thu 1 pm	Thu 2 pm	Thu 3 pm	Thu 4 pm	Thu 5 pm	Thu 6 pm	Thu 7 pm	Thu 8 pm	Thu 9 pm	Thu 10 pm	Thu 11 pm
Houston Pilots N - 610 Bridge	6 12 ↕	5 10 ↕	5 9 ↕	3 8 ↕	3 8 ↕	3 7 ↕	3 6 ↕	2 6 ↕	2 6 ↕	3 6 ↕	3 7 ↕	3 7 ↕	3 8 ↕	5 9 ↕	6 10 ↕	6 12 ↕	6 13 ↕	7 14 ↕	8 14 ↕	8 15 ↕	8 14 ↕	8 14 ↕	7 13 ↕	6 13 ↕
Houston Pilots M - Kinder 1	6 12 ↕	5 10 ↕	5 9 ↕	3 8 ↕	3 8 ↕	3 7 ↕	3 6 ↕	2 6 ↕	2 6 ↕	3 6 ↕	3 7 ↕	3 7 ↕	3 8 ↕	5 9 ↕	6 10 ↕	6 12 ↕	6 13 ↕	7 14 ↕	8 14 ↕	8 15 ↕	8 14 ↕	7 14 ↕	7 13 ↕	6 12 ↕
Houston Pilots L - Greens Bayou	5 10 ↕	5 9 ↕	3 9 ↕	3 8 ↕	3 7 ↕	3 7 ↕	2 6 ↕	2 6 ↕	2 6 ↕	2 6 ↕	3 7 ↕	3 8 ↕	3 8 ↕	5 9 ↕	6 10 ↕	6 12 ↕	6 13 ↕	7 13 ↕	8 14 ↕	8 14 ↕	8 14 ↕	7 14 ↕	6 13 ↕	6 12 ↕
Houston Pilots K - Shell Crude	5 10 ↕	5 9 ↕	3 9 ↕	3 8 ↕	3 7 ↕	3 7 ↕	2 6 ↕	2 6 ↕	2 6 ↕	2 6 ↕	3 6 ↕	3 7 ↕	3 8 ↕	5 9 ↕	6 10 ↕	6 12 ↕	6 13 ↕	7 13 ↕	7 14 ↕	8 14 ↕	8 14 ↕	7 13 ↕	6 12 ↕	6 12 ↕
Houston Pilots J - Lynchburg Ferries	5 10 ↕	3 9 ↕	3 8 ↕	3 7 ↕	3 7 ↕	2 6 ↕	2 6 ↕	2 5 ↕	2 5 ↕	2 6 ↕	3 7 ↕	3 8 ↕	3 8 ↕	5 9 ↕	5 10 ↕	6 10 ↕	6 12 ↕	7 13 ↕	7 14 ↕	8 14 ↕	8 14 ↕	6 13 ↕	6 12 ↕	6 12 ↕
Houston Pilots I - Exxon 3	9 13 ↕	8 12 ↕	8 12 ↕	7 10 ↕	6 9 ↕	6 9 ↕	6 8 ↕	5 7 ↕	5 7 ↕	5 8 ↕	5 8 ↕	6 9 ↕	6 9 ↕	6 10 ↕	8 13 ↕	8 14 ↕	9 15 ↕	9 15 ↕	10 16 ↕	10 16 ↕	10 16 ↕	10 15 ↕	10 14 ↕	10 14 ↕
Houston Pilots H - Morgans Point	9 13 ↕	8 12 ↕	8 12 ↕	7 10 ↕	6 9 ↕	6 9 ↕	6 8 ↕	5 7 ↕	5 7 ↕	5 7 ↕	5 8 ↕	6 9 ↕	6 9 ↕	6 10 ↕	8 13 ↕	8 14 ↕	9 15 ↕	9 15 ↕	10 16 ↕	10 16 ↕	10 16 ↕	10 15 ↕	10 14 ↕	10 14 ↕
Houston Pilots G - 75/76	10 14 ↕	9 13 ↕	9 13 ↕	8 12 ↕	8 10 ↕	7 10 ↕	6 9 ↕	6 8 ↕	6 8 ↕	6 8 ↕	6 9 ↕	6 10 ↕	6 10 ↕	6 10 ↕	7 13 ↕	8 14 ↕	8 15 ↕	9 16 ↕	10 16 ↕	10 16 ↕	10 16 ↕	10 15 ↕	10 15 ↕	10 15 ↕
Houston Pilots F - 63/64	9 14 ↕	9 13 ↕	9 13 ↕	8 12 ↕	8 12 ↕	7 10 ↕	6 9 ↕	6 8 ↕	6 8 ↕	6 8 ↕	6 9 ↕	6 10 ↕	6 10 ↕	6 10 ↕	7 12 ↕	8 13 ↕	8 14 ↕	9 15 ↕	9 15 ↕	10 16 ↕	10 16 ↕	10 15 ↕	10 15 ↕	10 15 ↕
Houston Pilots E - 51/52	9 14 ↕	9 13 ↕	9 13 ↕	8 12 ↕	8 12 ↕	7 10 ↕	6 9 ↕	6 8 ↕	6 8 ↕	6 8 ↕	6 8 ↕	6 9 ↕	6 9 ↕	6 10 ↕	7 12 ↕	7 13 ↕	8 13 ↕	8 14 ↕	9 15 ↕	10 16 ↕	10 16 ↕	10 15 ↕	10 15 ↕	10 15 ↕
Houston Pilots D - 37/38	9 13 ↕	9 13 ↕	9 13 ↕	8 12 ↕	8 12 ↕	7 10 ↕	6 9 ↕	6 8 ↕	6 8 ↕	6 8 ↕	6 8 ↕	6 9 ↕	6 9 ↕	6 10 ↕	6 12 ↕	7 12 ↕	8 13 ↕	8 13 ↕	9 14 ↕	9 14 ↕	10 14 ↕	10 14 ↕	10 15 ↕	10 15 ↕
Houston Pilots C - 25/26	8 13 ↕	8 13 ↕	8 13 ↕	8 12 ↕	7 10 ↕	7 10 ↕	6 9 ↕	6 8 ↕	6 8 ↕	6 8 ↕	6 8 ↕	6 9 ↕	6 9 ↕	6 10 ↕	6 10 ↕	7 12 ↕	7 12 ↕	8 13 ↕	8 13 ↕	9 14 ↕	9 14 ↕	10 14 ↕	10 14 ↕	10 15 ↕
Houston Pilots B - 11/12	7 13 ↕	7 13 ↕	7 13 ↕	7 12 ↕	6 10 ↕	6 10 ↕	6 9 ↕	5 8 ↕	5 8 ↕	5 8 ↕	5 8 ↕	5 8 ↕	6 9 ↕	6 10 ↕	7 10 ↕	7 12 ↕	7 12 ↕	8 13 ↕	8 13 ↕	8 13 ↕	8 13 ↕	8 14 ↕	8 14 ↕	8 15 ↕
Houston Pilots A - 1 & 2 Bravo	8 13 ↕	8 13 ↕	8 13 ↕	8 12 ↕	8 12 ↕	8 12 ↕	7 10 ↕	6 9 ↕	6 9 ↕	6 8 ↕	6 8 ↕	6 8 ↕	6 9 ↕	6 9 ↕	6 10 ↕	6 10 ↕	7 10 ↕	8 12 ↕	8 13 ↕	8 14 ↕	9 14 ↕	9 14 ↕	10 15 ↕	10 16 ↕

NOTE: This is automated data that may/may not agree with the official BAM thinking that's found on the daily slides. This data should be used as a guide only.

Forecast Discussion

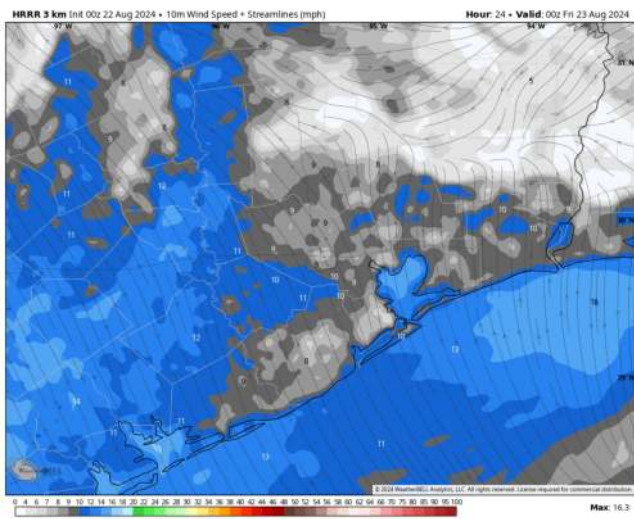
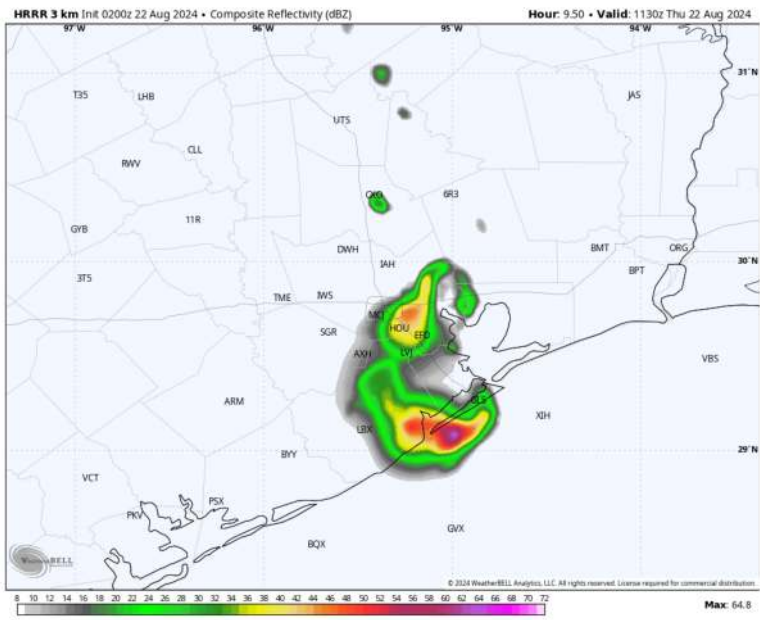
Precip: An Isolated Storm from 4AM – 8AM can't be ruled out over the bay area (20% chance), with localized gusts of 30 – 40kts. Dry time to follow, with pop ups in play once again from 12 PM – 6 PM. Dry conditions are favored for the rest of the night.

Wind: Winds will be generally out of the E through 9AM before becoming variable through the afternoon. By 5PM, winds will shift to out of the SSE. **N of Morgan's Point:** Winds at 3 – 8 kts through the day. **S of Morgan's Point:** Winds at 4 – 8 kts through 5 PM, slowly increasing to 8 – 13 kts through the rest of the PM.

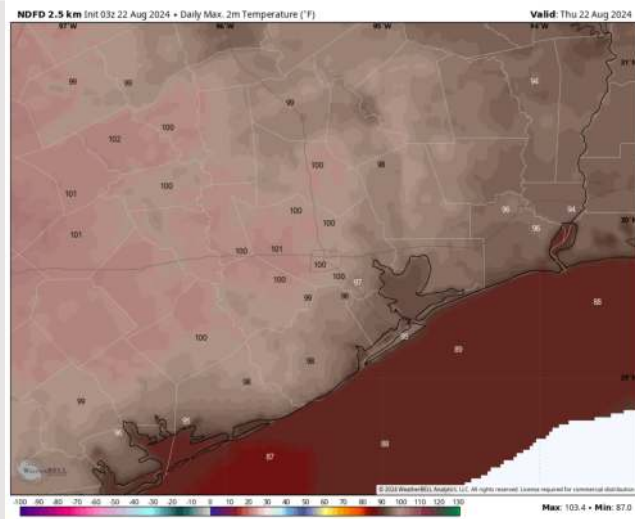
High Temps: **N of Morgan's Point:** Near 100 F. **S of Morgan's Point:** Lower to mid 90s F.

Visibility: Not anticipating any visibility concerns for Today.

Precip Image: 6:30 AM CT



Wind Speed:
7 PM CT



High Temps
Today

Houston Pilots: FRI. 8/23/2024



Forecast Discussion

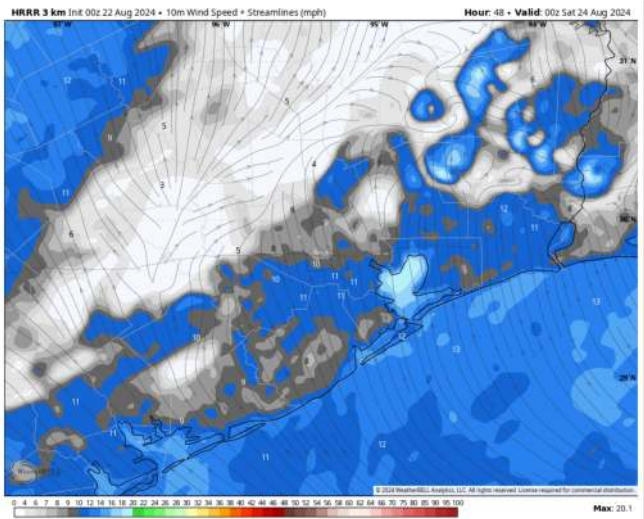
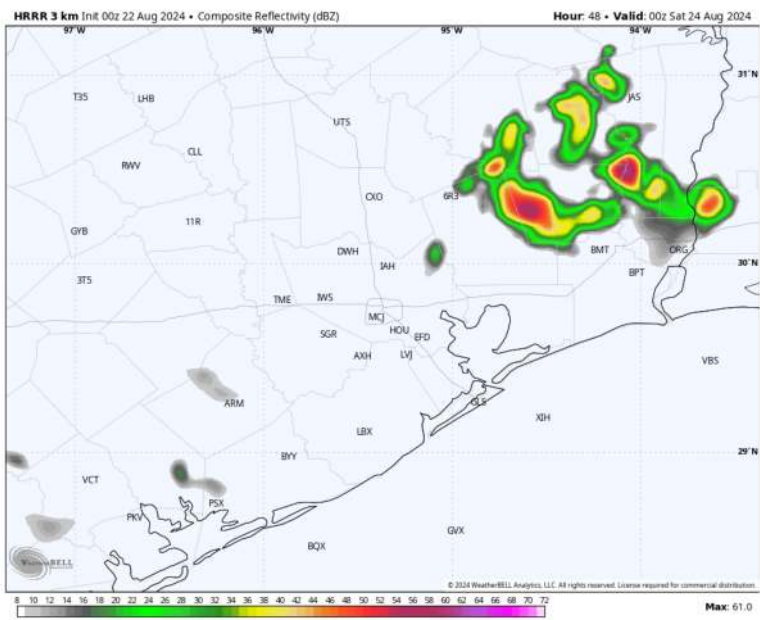
Precip: 20% chances for a brief storm or two from 7 PM – 11 PM. **Localized gusts of 30 – 40kts can't be ruled out.**

Wind: Variable winds will be present until 11 AM where they will settle out of the S/SE for the rest of Friday. **N of Morgan's Point:** Winds at 2 – 8 kts through the entire day. **S of Morgan's Point:** Winds at 3 – 8 kts through 3 PM before increasing to 8 – 13kts for the rest of the night.

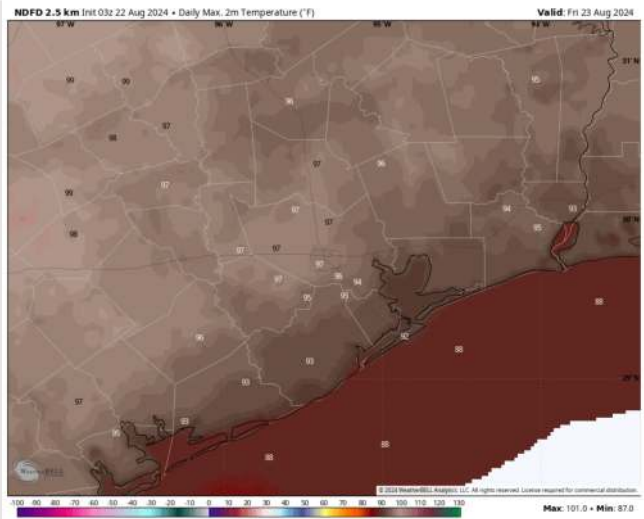
High Temps: **N of Morgan's Point:** Mid to upper 90s F. **S of Morgan's Point:** Near 90 F.

Visibility: Not anticipating any visibility concerns for Friday.

Precip Image: 7 PM CT



Wind Speed
1 PM CT



High Temps
Friday

Houston Pilots: SAT. 8/24/2024



Forecast Discussion

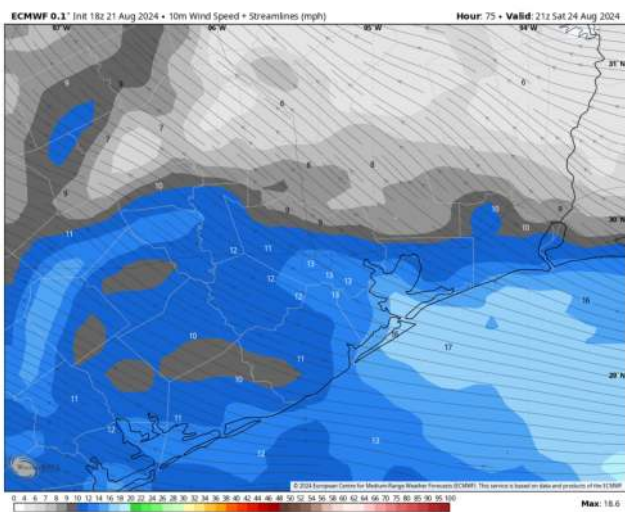
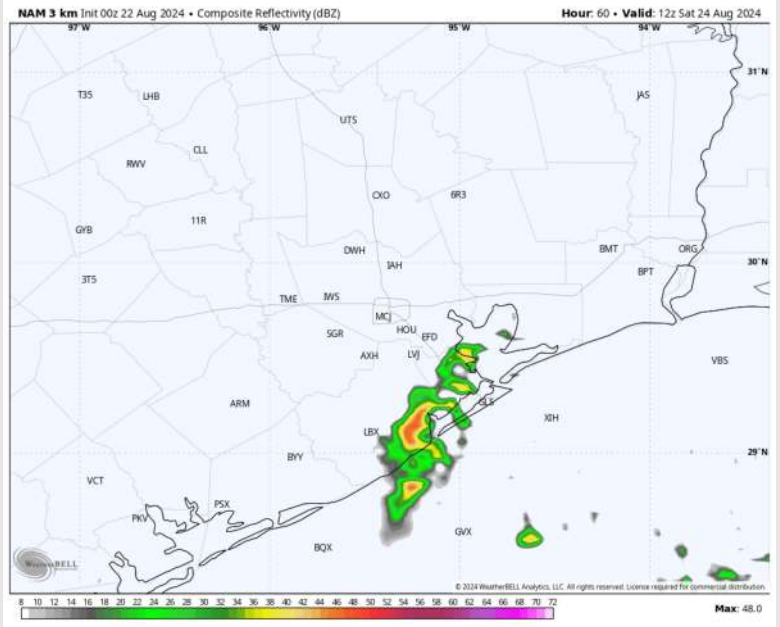
Precip: Scattered (20%) showers and a few storms can't be ruled out from 5AM – 4PM on Saturday.

Wind: Winds will be out of the SE/ESE throughout the entire day. **N of Morgan's Point:** Winds will be at 5 – 9 kts through 2PM before increasing to 7 – 12kts. **S of Morgan's Point:** Winds will be at 7 – 12 kts through 2PM before increasing to 12 – 17 kts.

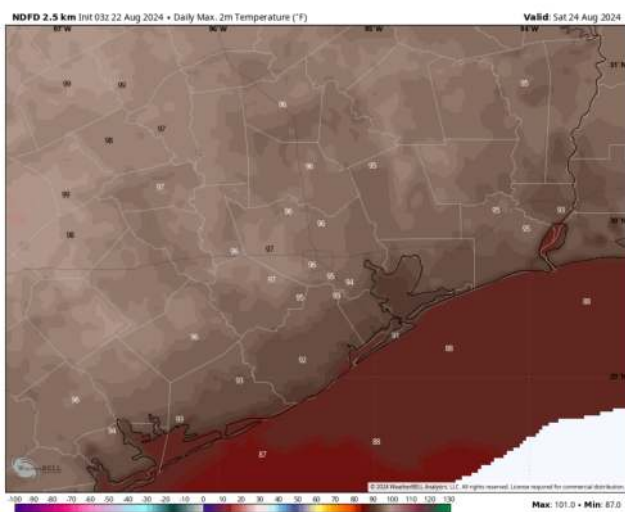
High Temps: **N of Morgan's Point:** Mid 90 F. **S of Morgan's Point:** Mid to Upper 80s F.

Visibility: Not favoring any visibility concerns for Saturday.

Precip Image: 7 AM CT

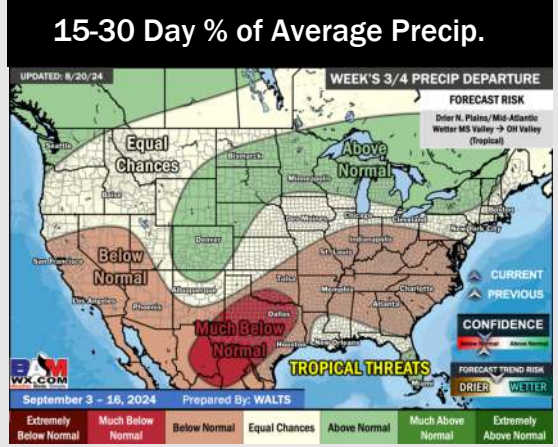
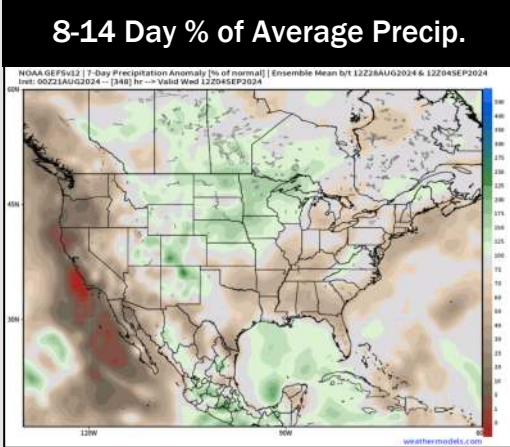
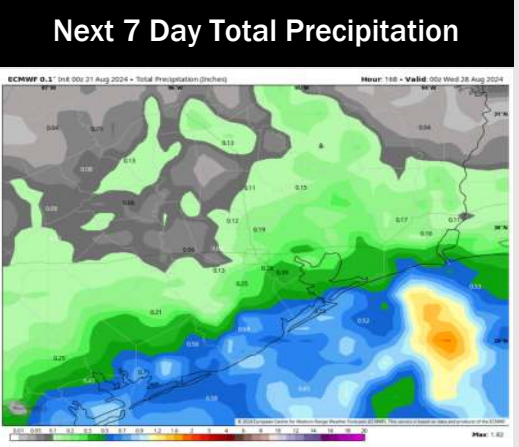
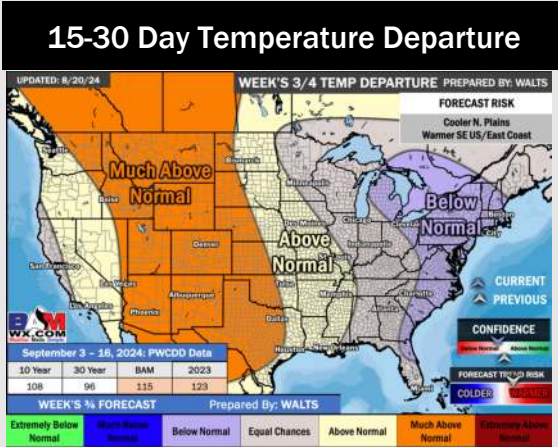
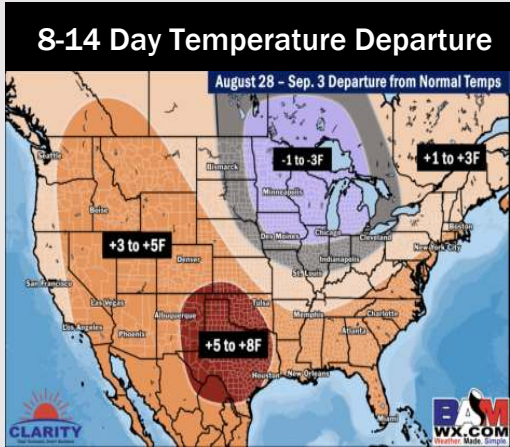
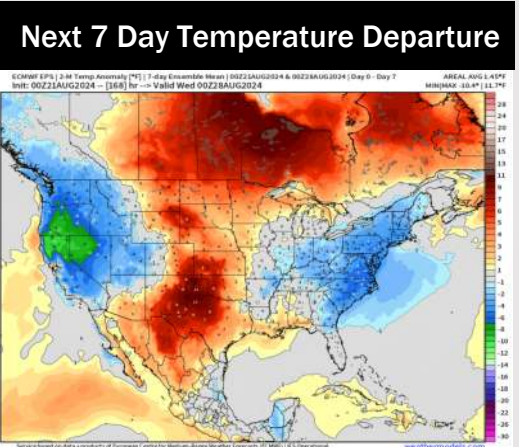


Wind Speed:
4 PM CT



High Temps
Saturday

Houston Pilots: 8/22/24



- Temps are expected to be above normal for the week 1 timeframe. Although more dry time than not, a few hit/miss rain chances are expected daily.
- Above average temperatures and slightly below / near normal precipitation chances are favored for the week 2 timeframe.
- Above normal temperatures and below average precipitation chances are expected for the weeks 3/4 timeframe. As we approach late August & going into September, Atlantic tropical activity looks to ramp up. We will be monitoring closely and providing updates as needed.