

# Houston Pilots Forecast Package



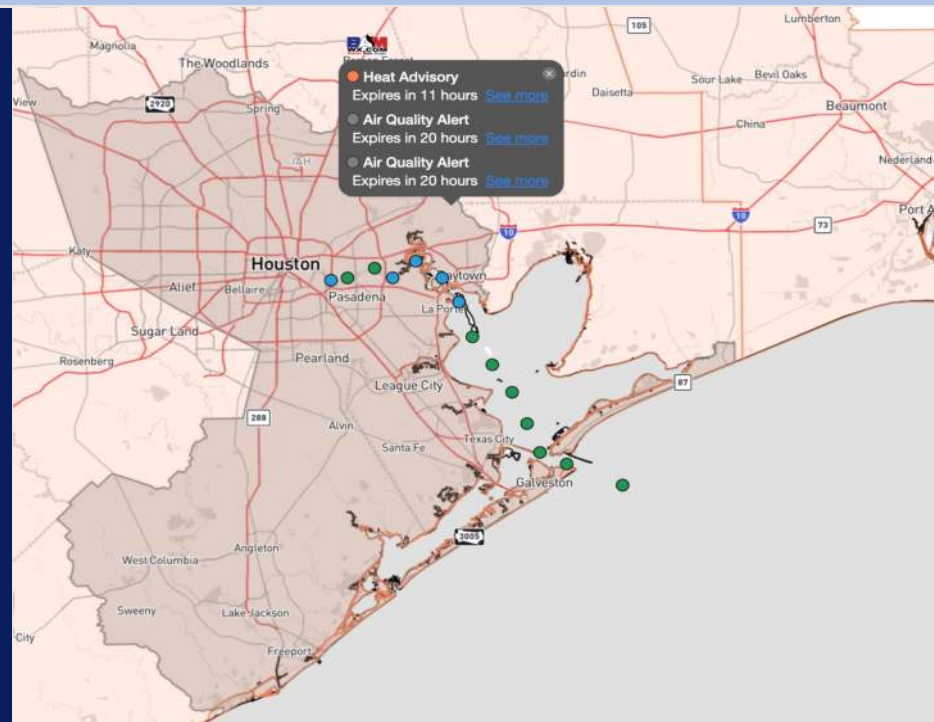
Updated: 11:15 PM CT

Monday, August 19, 2024

Forecaster: John Kemper

## Weather Headlines

- **Watching for localized risk for stronger gusts associated with isolated storms early Wednesday AM.**
- **Not favoring any fog risks over the next few days.**
- **High temperatures expected to reach into the 100s over the next few days.**



**Current Radar: 11:00 PM CT**



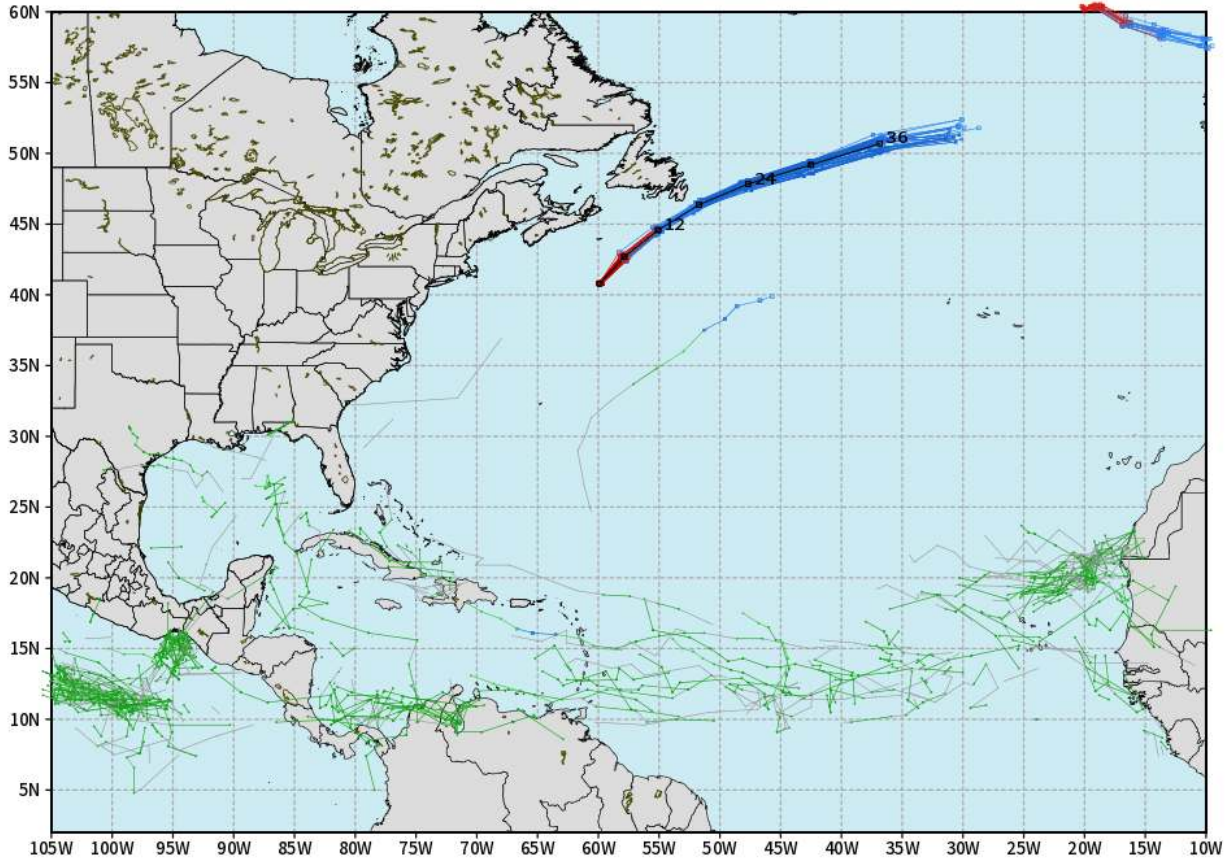
As always, please do not hesitate to reach out to us with any forecast questions via the chat option on Clarity or our on-call number, **(317)-560-8122** press **1** for forecast questions.

# Houston Pilots Tropical Update

## European Model Next 10 Days - Tropical Tracks

ECMWF ATLANTIC EPS Cyclone Locations --> Next [10-days]  
INIT: 12Z19AUG2024 --> UNTIL 12Z29AUG2024

o-o ENSEMBLE MEAN  
o-o 1000 - 1010 hPa  
o-o 980 - 999 hPa  
o-o 960 - 979 hPa  
o-o 950 - 959 hPa  
o-o < 950 hPa



weathermodels.com

Not favoring any threats in the Gulf of Mexico through at least the next 7 days.

Long Range Forecasts continue to support an uptick in activity towards end of August and into September.

# Houston Pilots Visibility Chart (miles)



## Forecast Confidence



Visibility	Tue 12 am	Tue 1 am	Tue 2 am	Tue 3 am	Tue 4 am	Tue 5 am	Tue 6 am	Tue 7 am	Tue 8 am	Tue 9 am	Tue 10 am	Tue 11 am	Tue 12 pm	Tue 1 pm	Tue 2 pm	Tue 3 pm	Tue 4 pm	Tue 5 pm	Tue 6 pm	Tue 7 pm	Tue 8 pm	Tue 9 pm	Tue 10 pm	Tue 11 pm
Houston Pilots N - 610 Bridge	10.1	10.1	10.1	10.1	10.1	10.1	10.1	10.1	10.1	10.1	10.1	10.1	10.1	10.1	10.1	10.1	10.1	10.1	10.1	10.1	10.1	10.1	10.1	10.1
Houston Pilots M - Kinder 1	10.1	10.1	10.1	10.1	10.1	10.1	10.1	10.1	10.1	10.1	10.1	10.1	10.1	10.1	10.1	10.1	10.1	10.1	10.1	10.1	10.1	10.1	10.1	10.1
Houston Pilots L - Greens Bayou	10.1	10.1	10.1	10.1	10.1	10.1	10.1	10.1	10.1	10.1	10.1	10.1	10.1	10.1	10.1	10.1	10.1	10.1	10.1	10.1	10.1	10.1	10.1	10.1
Houston Pilots K - Shell Crude	10.1	10.1	10.1	10.1	10.1	10.1	10.1	10.1	10.1	10.1	10.1	10.1	10.1	10.1	10.1	10.1	10.1	10.1	10.1	10.1	10.1	10.1	10.1	10.1
Houston Pilots J - Lynchburg Ferries	10.1	10.1	10.1	10.1	10.1	10.1	10.1	10.1	10.1	10.1	10.1	10.1	10.1	10.1	10.1	10.1	10.1	10.1	10.1	10.1	10.1	10.1	10.1	10.1
Houston Pilots I - Exxon 3	10.1	10.1	10.1	10.1	10.1	10.1	10.1	10.1	10.1	10.1	10.1	10.1	10.1	10.1	10.1	10.1	10.1	10.1	10.1	10.1	10.1	10.1	10.1	10.1
Houston Pilots H - Morgans Point	10.1	10.1	10.1	10.1	10.1	10.1	10.1	10.1	10.1	10.1	10.1	10.1	10.1	10.1	10.1	10.1	10.1	10.1	10.1	10.1	10.1	10.1	10.1	10.1
Houston Pilots G - 75/76	10.1	10.1	10.1	10.1	10.1	10.1	10.1	10.1	10.1	10.1	10.1	10.1	10.1	10.1	10.1	10.1	10.1	10.1	10.1	10.1	10.1	10.1	10.1	12
Houston Pilots F - 63/64	10.1	10.1	10.1	10.1	10.1	10.1	10.1	10.1	10.1	10.1	10.1	10.1	10.1	10.1	10.1	10.1	10.1	10.1	10.1	10.1	10.1	10.1	10.1	12
Houston Pilots E - 51/52	10.1	10.1	10.1	10.1	10.1	10.1	10.1	10.1	10.1	10.1	10.1	10.1	10.1	10.1	10.1	10.1	10.1	10.1	10.1	10.1	10.1	10.1	10.1	12
Houston Pilots D - 37/38	10.1	10.1	10.1	10.1	10.1	10.1	10.1	10.1	10.1	10.1	10.1	10.1	10.1	10.1	10.1	10.1	10.1	10.1	10.1	10.1	10.1	10.1	10.1	12
Houston Pilots C - 25/26	10.1	10.1	10.1	10.1	10.1	10.1	10.1	10.1	10.1	10.1	10.1	10.1	10.1	10.1	10.1	10.1	10.1	10.1	10.1	10.1	10.1	10.1	10.1	12
Houston Pilots B - 11/12	10.1	10.1	10.1	10.1	10.1	10.1	10.1	10.1	10.1	10.1	10.1	10.1	10.1	10.1	10.1	10.1	10.1	10.1	10.1	10.1	10.1	10.1	10.1	12
Houston Pilots A - 1 & 2 Bravo	10.1	10.1	10.1	10.1	10.1	10.1	10.1	10.1	10.1	10.1	10.1	10.1	10.1	10.1	10.1	10.1	10.1	10.1	10.1	10.1	10.1	10.1	10.1	12

**NOTE: This is automated data that may/may not agree with the official BAM thinking that's found on the daily slides or special visibility report slides. This data should be used as a guide only**

# Houston Pilots Wind Chart



Sustained wind 10 Knots  
 Gusts 15 Knots  
 Wind from the SE

**Example**  
 10  
 15  
 ↙

Wind	Tue 12 am	Tue 1 am	Tue 2 am	Tue 3 am	Tue 4 am	Tue 5 am	Tue 6 am	Tue 7 am	Tue 8 am	Tue 9 am	Tue 10 am	Tue 11 am	Tue 12 pm	Tue 1 pm	Tue 2 pm	Tue 3 pm	Tue 4 pm	Tue 5 pm	Tue 6 pm	Tue 7 pm	Tue 8 pm	Tue 9 pm	Tue 10 pm	Tue 11 pm
Houston Pilots N - 610 Bridge	5 10 ↗	5 10 ↗	6 12 ↗	5 10 ↗	5 10 ↗	5 10 ↗	3 9 ↗	3 8 ↗	3 7 ↗	3 6 ↗	3 5 ↗	5 9 ↗	5 9 ↗	5 9 ↗	5 10 ↗	5 10 ↗	5 12 ↗	5 12 ↗	6 12 ↗	6 12 ↗	6 12 ↗	6 10 ↗	6 10 ↗	6 10 ↗
Houston Pilots M - Kinder 1	5 10 ↗	5 10 ↗	6 10 ↗	5 10 ↗	5 10 ↗	5 10 ↗	3 9 ↗	3 8 ↗	3 7 ↗	3 6 ↗	3 5 ↗	5 9 ↗	5 9 ↗	5 9 ↗	5 10 ↗	5 10 ↗	5 12 ↗	5 12 ↗	6 12 ↗	6 12 ↗	6 12 ↗	6 10 ↗	6 10 ↗	6 10 ↗
Houston Pilots L - Greens Bayou	5 9 ↗	5 9 ↗	5 10 ↗	5 9 ↗	3 9 ↗	3 9 ↗	3 8 ↗	3 7 ↗	3 7 ↗	3 7 ↗	3 8 ↗	3 9 ↗	3 9 ↗	3 9 ↗	5 9 ↗	5 10 ↗	5 12 ↗	5 12 ↗	6 13 ↗	6 13 ↗	6 12 ↗	6 10 ↗	5 10 ↗	5 10 ↗
Houston Pilots K - Shell Crude	5 9 ↗	5 9 ↗	5 10 ↗	5 9 ↗	3 9 ↗	3 9 ↗	3 8 ↗	3 7 ↗	3 7 ↗	3 7 ↗	3 8 ↗	3 9 ↗	3 9 ↗	3 9 ↗	5 9 ↗	5 9 ↗	5 10 ↗	5 12 ↗	6 13 ↗	6 13 ↗	6 12 ↗	6 10 ↗	5 12 ↗	5 10 ↗
Houston Pilots J - Lynchburg Ferries	3 9 ↗	3 9 ↗	3 9 ↗	3 9 ↗	3 8 ↗	3 8 ↗	3 8 ↗	3 7 ↗	2 6 ↗	3 7 ↗	3 7 ↗	3 9 ↗	3 9 ↗	3 9 ↗	3 9 ↗	3 9 ↗	5 10 ↗	5 12 ↗	6 12 ↗	6 13 ↗	6 12 ↗	5 10 ↗	5 10 ↗	5 10 ↗
Houston Pilots I - Exxon 3	8 12 ↗	8 12 ↗	8 13 ↗	8 12 ↗	8 12 ↗	8 12 ↗	7 10 ↗	6 9 ↗	6 9 ↗	6 9 ↗	6 9 ↗	6 9 ↗	5 9 ↗	6 10 ↗	6 10 ↗	6 12 ↗	7 13 ↗	7 14 ↗	8 14 ↗	8 14 ↗	9 14 ↗	9 13 ↗	9 14 ↗	9 13 ↗
Houston Pilots H - Morgans Point	8 12 ↗	8 12 ↗	8 13 ↗	8 12 ↗	8 12 ↗	8 12 ↗	7 10 ↗	6 9 ↗	6 9 ↗	6 9 ↗	6 9 ↗	6 9 ↗	5 9 ↗	5 10 ↗	6 10 ↗	6 13 ↗	6 13 ↗	7 14 ↗	8 14 ↗	8 14 ↗	9 14 ↗	9 13 ↗	9 14 ↗	9 13 ↗
Houston Pilots G - 75/76	9 13 ↗	9 13 ↗	9 14 ↗	9 13 ↗	8 13 ↗	8 13 ↗	8 12 ↗	8 12 ↗	7 12 ↗	7 10 ↗	6 10 ↗	6 10 ↗	6 9 ↗	5 10 ↗	6 10 ↗	6 10 ↗	6 13 ↗	7 13 ↗	8 14 ↗	9 14 ↗	10 15 ↗	10 15 ↗	10 15 ↗	10 14 ↗
Houston Pilots F - 63/64	8 13 ↗	9 13 ↗	9 13 ↗	9 13 ↗	8 13 ↗	8 13 ↗	8 12 ↗	8 12 ↗	8 12 ↗	7 12 ↗	7 12 ↗	6 12 ↗	5 12 ↗	5 9 ↗	5 9 ↗	6 10 ↗	6 12 ↗	7 13 ↗	8 14 ↗	8 15 ↗	8 15 ↗	10 15 ↗	10 15 ↗	9 14 ↗
Houston Pilots E - 51/52	8 13 ↗	8 13 ↗	8 13 ↗	8 13 ↗	8 13 ↗	8 13 ↗	8 13 ↗	8 12 ↗	8 12 ↗	7 12 ↗	7 12 ↗	7 12 ↗	6 9 ↗	5 9 ↗	5 9 ↗	6 12 ↗	6 13 ↗	7 14 ↗	8 14 ↗	9 15 ↗	10 15 ↗	10 15 ↗	10 15 ↗	9 14 ↗
Houston Pilots D - 37/38	8 13 ↗	8 12 ↗	8 13 ↗	8 13 ↗	8 13 ↗	8 13 ↗	8 13 ↗	8 12 ↗	8 12 ↗	7 12 ↗	7 12 ↗	7 12 ↗	6 10 ↗	5 9 ↗	5 9 ↗	6 10 ↗	6 12 ↗	7 14 ↗	8 14 ↗	9 15 ↗	10 15 ↗	10 15 ↗	10 15 ↗	9 14 ↗
Houston Pilots C - 25/26	8 12 ↗	8 12 ↗	8 13 ↗	8 12 ↗	8 12 ↗	8 13 ↗	8 13 ↗	8 12 ↗	8 12 ↗	7 12 ↗	7 12 ↗	7 12 ↗	6 10 ↗	5 9 ↗	5 9 ↗	6 10 ↗	6 12 ↗	7 14 ↗	8 14 ↗	9 15 ↗	10 15 ↗	9 14 ↗	9 14 ↗	8 13 ↗
Houston Pilots B - 11/12	7 12 ↗	7 12 ↗	7 12 ↗	7 12 ↗	7 12 ↗	7 12 ↗	7 12 ↗	7 12 ↗	7 12 ↗	7 12 ↗	7 12 ↗	7 12 ↗	6 10 ↗	6 9 ↗	6 9 ↗	6 12 ↗	6 12 ↗	7 14 ↗	8 14 ↗	8 14 ↗	9 15 ↗	8 14 ↗	8 14 ↗	8 13 ↗
Houston Pilots A - 1 & 2 Bravo	8 12 ↗	8 12 ↗	8 13 ↗	8 13 ↗	8 13 ↗	8 13 ↗	8 13 ↗	8 14 ↗	8 14 ↗	8 14 ↗	8 14 ↗	8 14 ↗	8 13 ↗	6 10 ↗	6 10 ↗	6 9 ↗	6 10 ↗	7 12 ↗	8 14 ↗	9 15 ↗	10 15 ↗	9 14 ↗	9 14 ↗	8 13 ↗

**NOTE:** This is automated data that may/may not agree with the official BAM thinking that's found on the daily slides.  
 This data should be used as a guide only.

# Houston Pilots: TUE. 8/20/2024



## Forecast Discussion

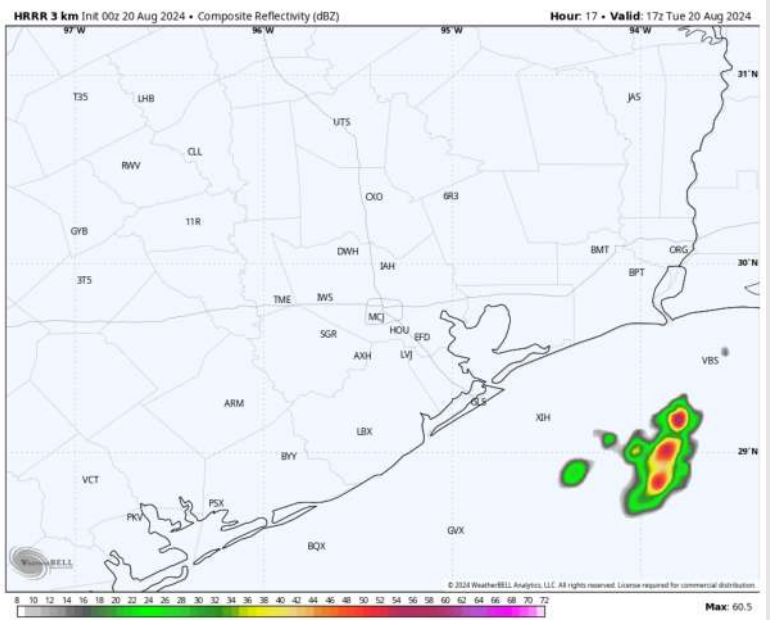
**Precip:** 20% chances for a downpour / brief storm for stations S of 25/26 from 12PM – 7PM.

**Wind:** Winds out of the SW will rotate clockwise out of the W by 9 AM. Winds will stay there until 3 PM when they will shift back out of the SW through the rest of the night. **N of Morgan's Point:** Winds at 3 – 6 kts through 10 AM, increasing to 7 – 11 kts from 10 AM to 5 PM. Winds will then calm back down to 3 – 6 kts for remainder of the day. **S of Morgan's Point:** Winds at 7 - 13 kts through 10 AM. Winds will then decrease to 3 – 8 kts the rest of the day.

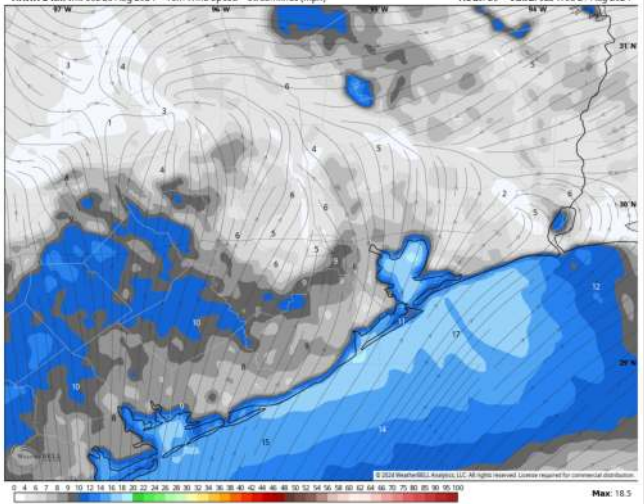
**High Temps:** **N of Morgan's Point:** Near 100 F. **S of Morgan's Point:** Mid to upper 90s F.

**Visibility:** Not anticipating any visibility concerns for today.

## Precip Image: 12 PM CT

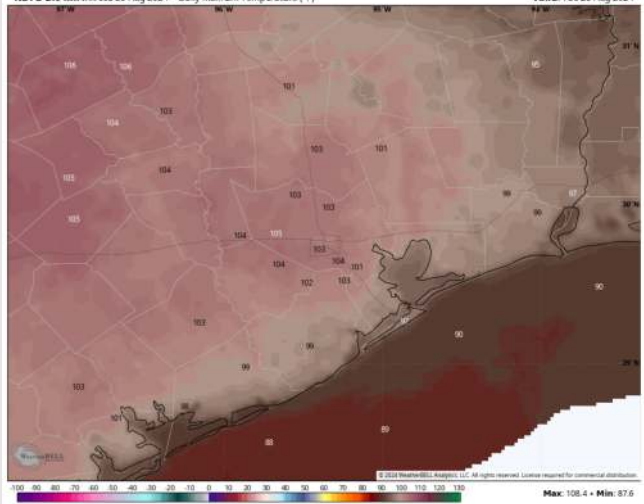


HRRR 3 km Init 00z 20 Aug 2024 • 10m Wind Speed • Streamlines (mph) Hour: 26 • Valid: 02z Wed 21 Aug 2024



Wind Speed  
9 PM CT

NDFD 2.5 km Init 03z 20 Aug 2024 • Daily Max. 2m Temperature (°F) Valid: Tue 20 Aug 2024



High Temps  
Today

# Houston Pilots: WED. 8/21/2024



## Forecast Discussion

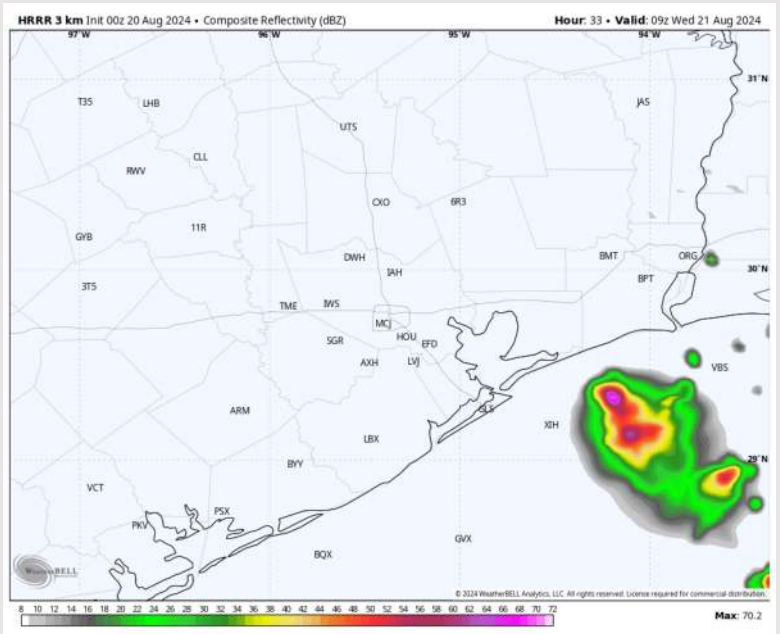
**Precip:** 20% chances for a downpour / brief storm for stations S of Morgan's Point from 2AM – 11AM. **Localized, stronger 30 - 40kt storm gust risk (OUT OF THE E) from 2AM – 6AM.**

**Wind:** Winds will start briefly out of the E / NE through 6AM. Beyond this, winds will be out of the S/SW through the day on WED with the exception of 10AM – 2PM when winds will be variable. **N of Morgan's Point:** Winds will be at 3 – 8 kts throughout the day. **S of Morgan's Point:** Winds will be at 6 – 11 kts through 5AM before decreasing to 4 – 9 kts through the rest of the night.

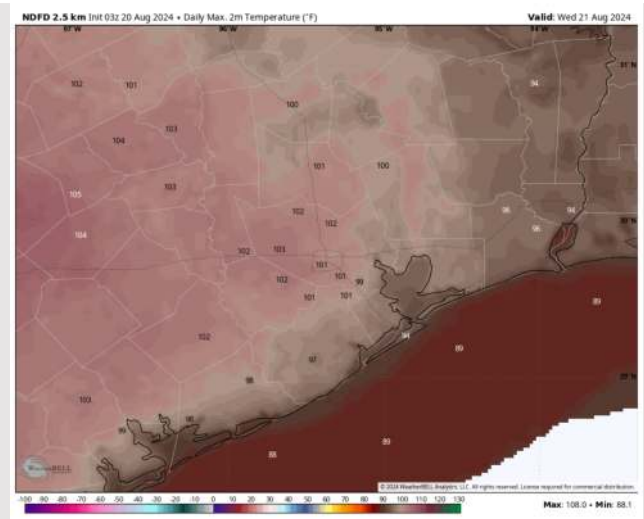
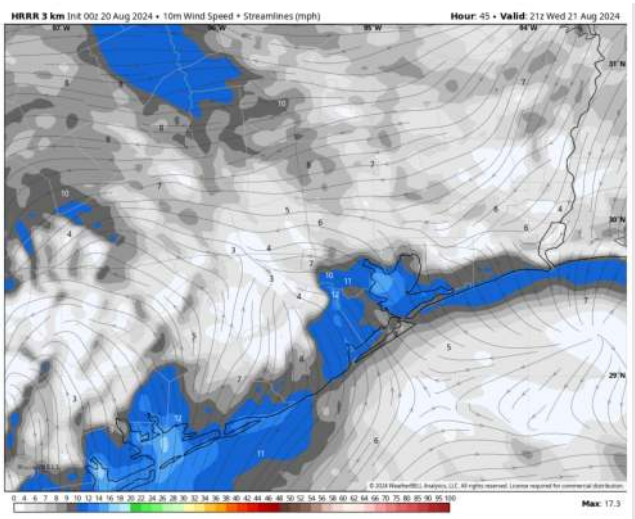
**High Temps:** **N of Morgan's Point:** Near 100 F. **S of Morgan's Point:** Lower 90s F.

**Visibility:** Not favoring any visibility concerns for Wed.

## Precip Image: 4 AM CT



Wind Speed:  
4 PM CT



High Temps  
Wednesday

## Forecast Discussion

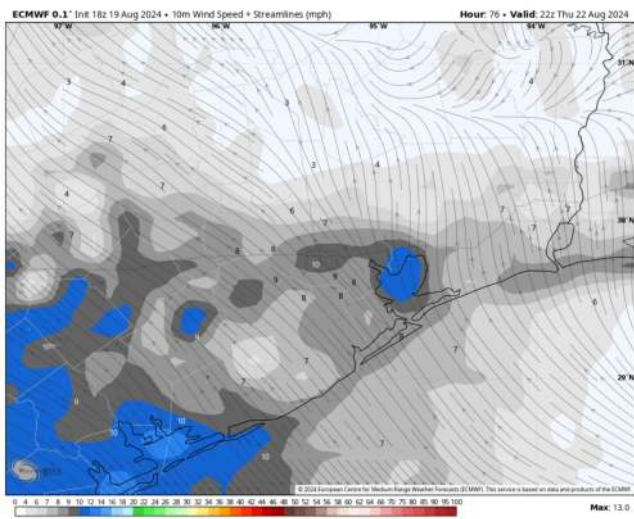
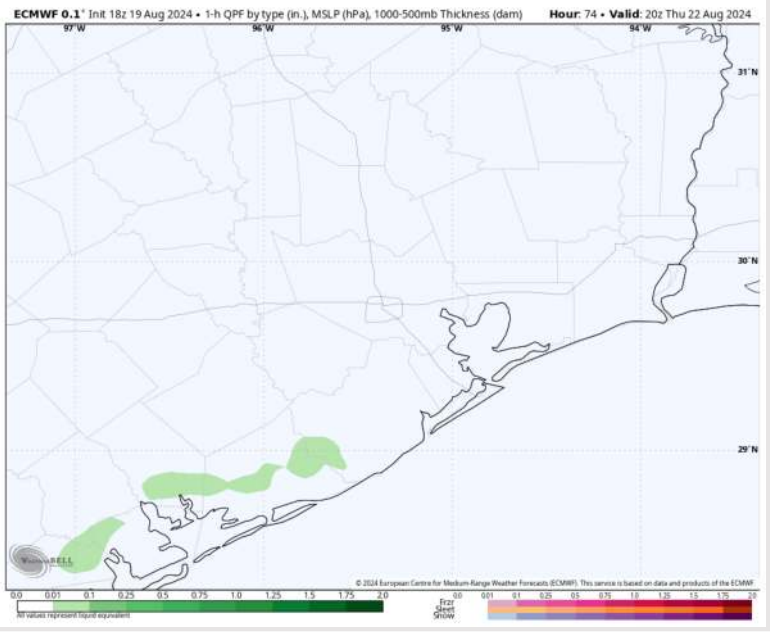
**Precip:** Favoring dry conditions at present, with all showers remaining just SW of Stations along coast.

**Wind:** Winds will be rather variable through 8 PM, before they will settle out of the SE through the rest of the evening. **N of Morgan's Point:** Winds at 3 – 7 kts through the rest of the day. **S of Morgan's Point:** Winds at 4 – 8 kts through 8 PM, increasing to 8 – 13 kts through the rest of the night.

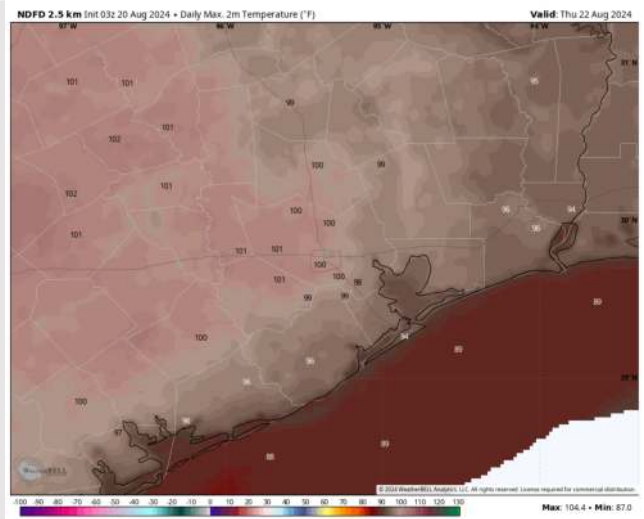
**High Temps:** **N of Morgan's Point:** Near 100 F. **S of Morgan's Point:** Upper 80s into Lower 90s F.

**Visibility:** Not anticipating any visibility concerns for Thursday.

## Precip Image: 3 PM CT



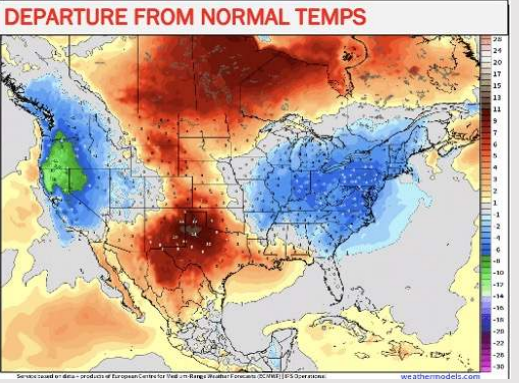
Wind Speed:  
5 PM CT



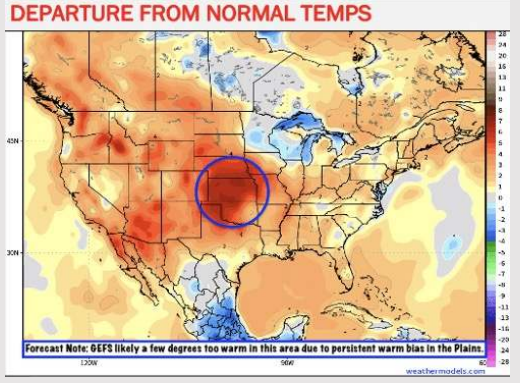
High Temps  
Thursday

# Houston Pilots: 8/20/24

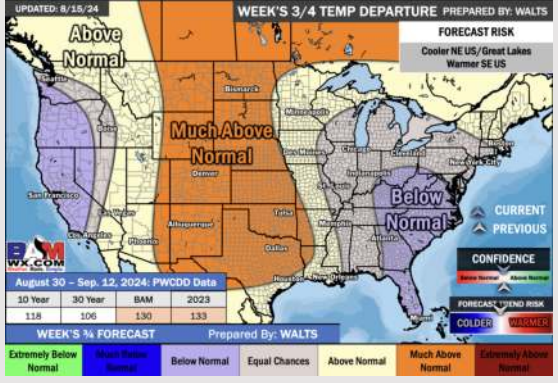
## Next 7 Day Temperature Departure



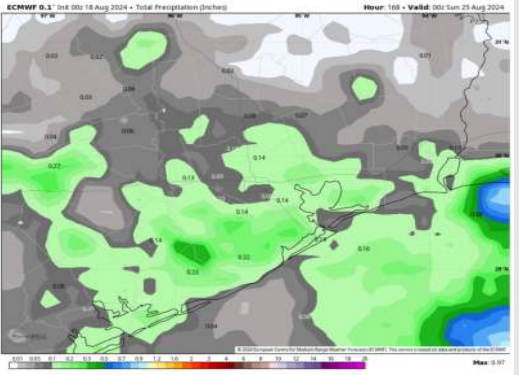
## 8-14 Day Temperature Departure



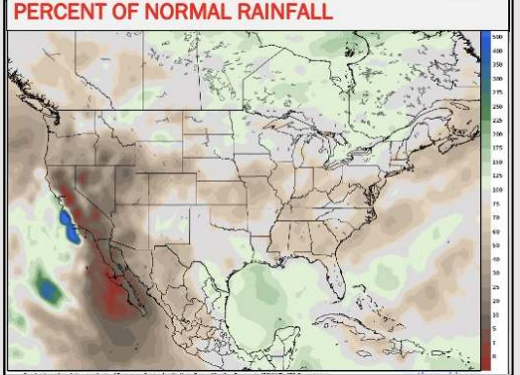
## 15-30 Day Temperature Departure



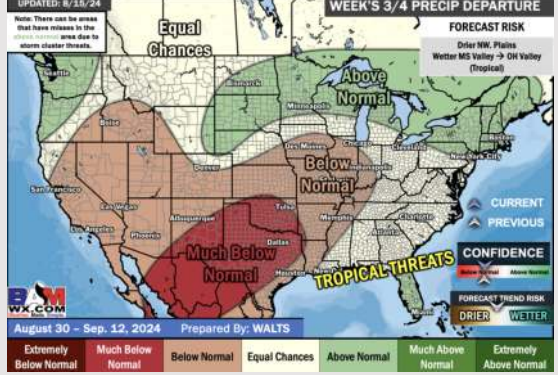
## Next 7 Day Total Precipitation



## 8-14 Day % of Average Precip.



## 15-30 Day % of Average Precip.



- Temps are expected to be above normal for the week 1 timeframe. Expecting a generally drier week with scattered rain chances throughout the week.
- Above average temperatures and below normal precipitation chances are favored for the week 2 timeframe.
- Near normal temperatures and below average precipitation chances are expected for the weeks 3/4 timeframe. As we approach late August & going into September, Atlantic tropical activity looks to ramp up. We will be monitoring closely and providing updates as needed.



# Houston Pilots Tropical Update

Late August and Beyond

