

Houston Pilots Forecast Package

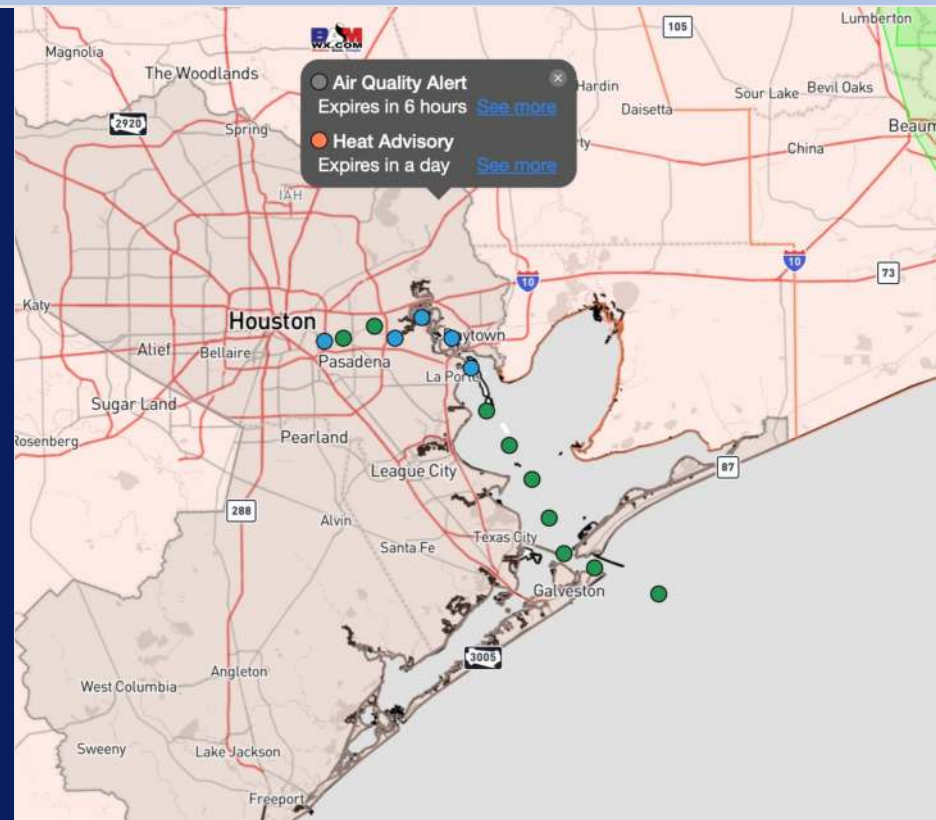


Updated: 1:50 PM CT
Friday, August 2, 2024

Forecaster: Alyssa Elliott

Weather Headlines

- Low end storm chances return to the area as we get into Saturday night
- Favoring Tropical Depression to Impact W Coast of Florida – See Latest Updates Below
- Patchy fog will be present surrounding Galveston Bay, however not anticipating visibility impacts to the stations!



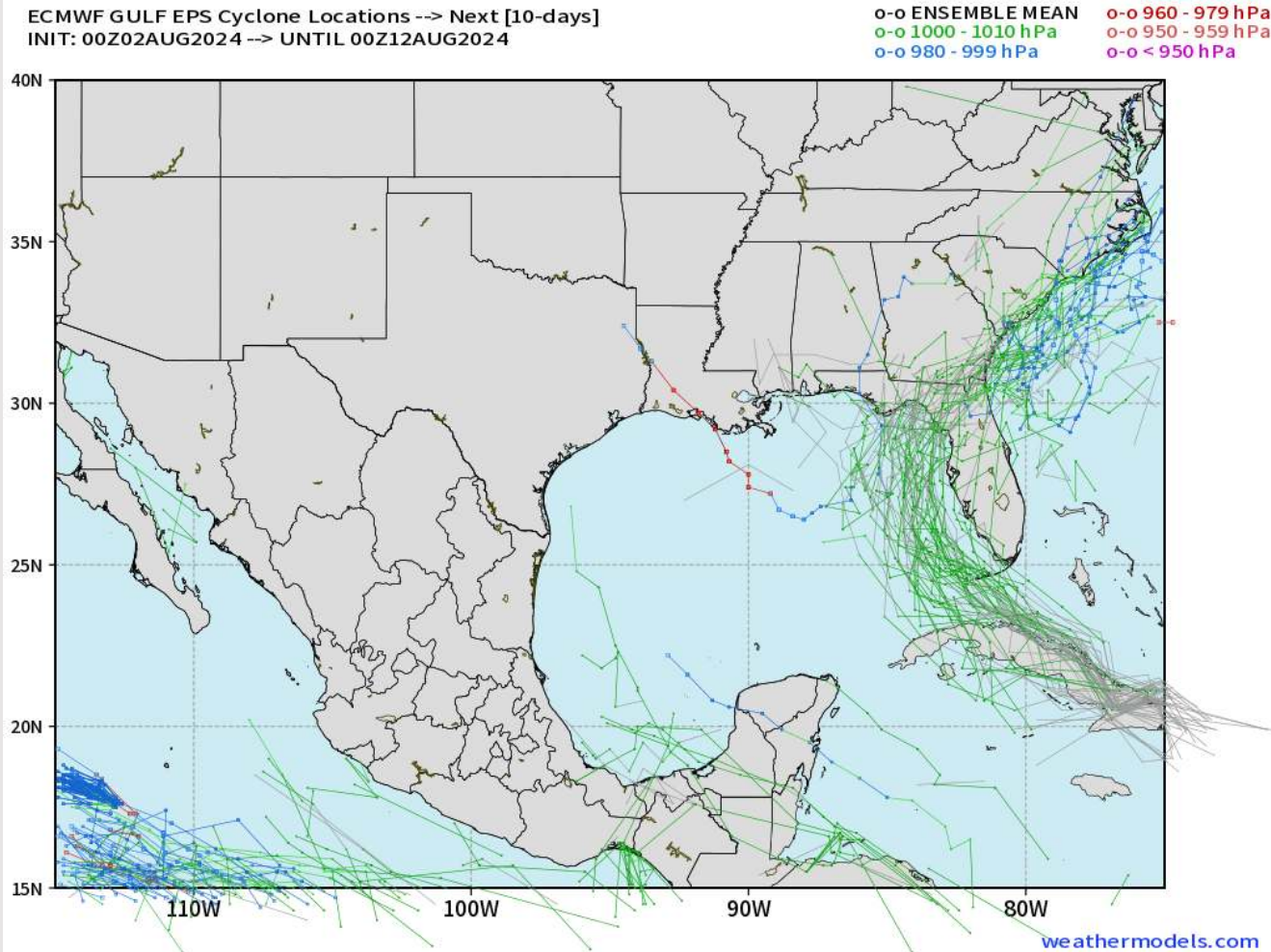
Current Radar: 1:30 PM CT



As always, please do not hesitate to reach out to us with any forecast questions via the chat option on Clarity or our on-call number, **(317)-560-8122** press **1** for forecast questions.

Houston Pilots Tropical Update

European Model Next 10 Days - Tropical Tracks



Not in favor of any tropical threats over the next 10 days to the HOU area.

A Tropical Depression has developed. Watching for Potential Tropical Cyclone Four development later this weekend, eventually impacting the western coast of Florida. See additional graphic on next slide for more in depth discussion on this.

Houston Pilots Tropical Update

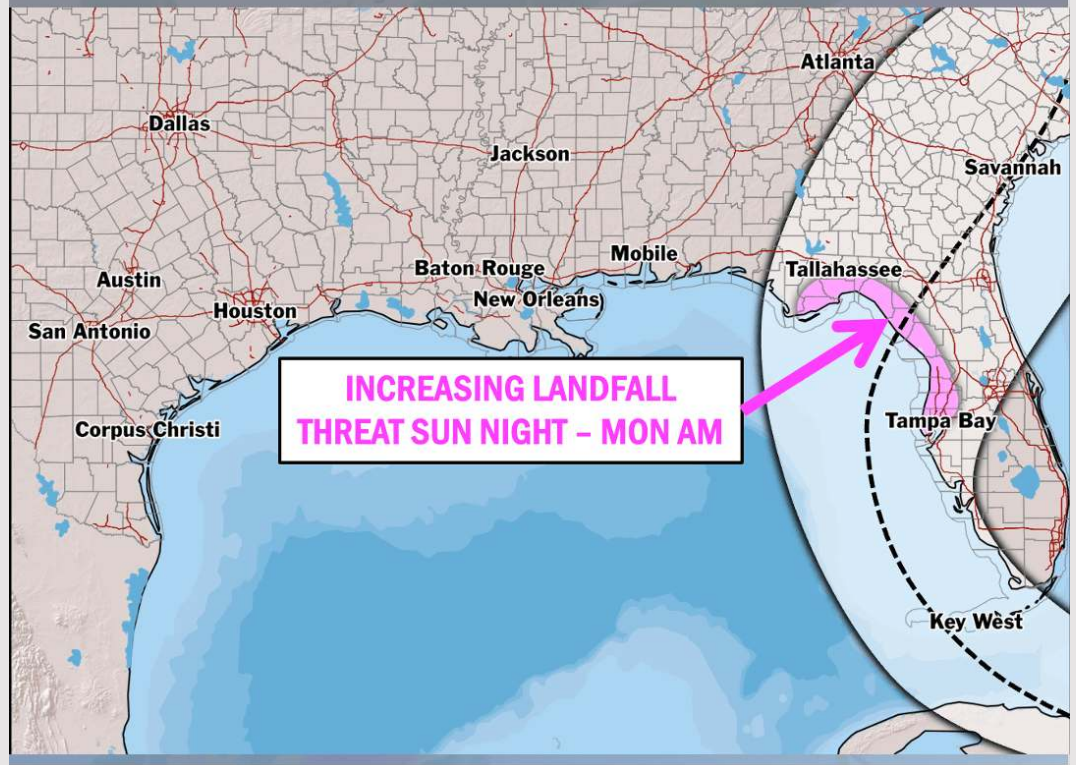


“DEBBY” TRACK THOUGHTS

DAILY INSIGHT

Friday, August 2, 2024

Forecaster: Walts



**INCREASING LANDFALL
THREAT SUN NIGHT - MON AM**

TIMING: Landfall ~Sunday Night – Monday AM

FORECAST NOTES:

- ✓ Increasing threat of Florida landfall late Sunday – Monday morning.
- ✓ Tropical storm – Cat 1 hurricane possible.



Houston Pilots Visibility Chart (miles)



Forecast Confidence



Visibility	Fri 3 pm	Fri 4 pm	Fri 5 pm	Fri 6 pm	Fri 7 pm	Fri 8 pm	Fri 9 pm	Fri 10 pm	Fri 11 pm	Sat 12 am	Sat 1 am	Sat 2 am	Sat 3 am	Sat 4 am	Sat 5 am	Sat 6 am	Sat 7 am	Sat 8 am	Sat 9 am	Sat 10 am	Sat 11 am	Sat 12 pm	Sat 1 pm	Sat 2 pm
Houston Pilots N - 610 Bridge	10.1	10.1	10.1	10.1	10.1	10.1	10.1	10.1	10.1	10.1	10.1	10.1	10.1	10.1	10.1	7.9	6.9	4.9	6.9	10.1	10.1	10.1	10.1	10.1
Houston Pilots M - Kinder 1	10.1	10.1	10.1	10.1	10.1	10.1	10.1	10.1	10.1	10.1	10.1	10.1	10.1	10.1	10.1	7.9	6.9	4.9	6.9	10.1	10.1	10.1	10.1	10.1
Houston Pilots L - Greens Bayou	10.1	10.1	10.1	10.1	10.1	10.1	10.1	10.1	10.1	10.1	10.1	10.1	10.1	10.1	10.1	6.9	6.9	4.9	6.9	10.1	10.1	10.1	10.1	10.1
Houston Pilots K - Shell Crude	10.1	10.1	10.1	10.1	10.1	10.1	10.1	10.1	10.1	10.1	10.1	10.1	10.1	10.1	10.1	6.9	6.9	4.9	6.9	10.1	10.1	10.1	10.1	10.1
Houston Pilots J - Lynchburg Ferries	10.1	10.1	10.1	10.1	10.1	10.1	10.1	10.1	10.1	10.1	10.1	10.1	10.1	10.1	10.1	6.9	6.9	4.9	6.9	10.1	10.1	10.1	10.1	10.1
Houston Pilots I - Exxon 3	10.1	10.1	10.1	10.1	10.1	10.1	10.1	10.1	10.1	10.1	10.1	10.1	10.1	10.1	10.1	6.9	6.9	4.9	6.9	10.1	10.1	10.1	10.1	10.1
Houston Pilots H - Morgans Point	10.1	10.1	10.1	10.1	10.1	10.1	10.1	10.1	10.1	10.1	10.1	10.1	10.1	10.1	10.1	6.9	6.9	4.9	6.9	10.1	10.1	10.1	10.1	10.1
Houston Pilots G - 75/76	10.1	10.1	10.1	10.1	10.1	10.1	10.1	10.1	10.1	10.1	10.1	10.1	10.1	10.1	10.1	9	9	6.9	6.9	10.1	10.1	10.1	12	12
Houston Pilots F - 63/64	10.1	10.1	10.1	10.1	10.1	10.1	10.1	10.1	10.1	10.1	10.1	10.1	10.1	10.1	10.1	9	9	6.9	6.9	10.1	10.1	10.1	12	12
Houston Pilots E - 51/52	10.1	10.1	10.1	10.1	10.1	10.1	10.1	10.1	10.1	10.1	10.1	10.1	10.1	10.1	10.1	10.1	9	6.9	6.9	10.1	10.1	10.1	12	12
Houston Pilots D - 37/38	10.1	10.1	10.1	10.1	10.1	10.1	10.1	10.1	10.1	10.1	10.1	10.1	10.1	10.1	10.1	10.1	9	6.9	6.9	10.1	10.1	10.1	12	12
Houston Pilots C - 25/26	10.1	10.1	10.1	10.1	10.1	10.1	10.1	10.1	10.1	10.1	10.1	10.1	10.1	10.1	10.1	10.1	9	6.9	6.9	10.1	10.1	10.1	12	12
Houston Pilots B - 11/12	10.1	10.1	10.1	10.1	10.1	10.1	10.1	10.1	10.1	10.1	10.1	10.1	10.1	10.1	10.1	10.1	9	6.9	6.9	10.1	10.1	10.1	12	12
Houston Pilots A - 1 & 2 Bravo	10.1	10.1	10.1	10.1	10.1	10.1	10.1	10.1	10.1	10.1	10.1	10.1	10.1	10.1	10.1	10.1	10.1	6.9	7.9	10.1	10.1	10.1	12	12

NOTE: This is automated data that may/may not agree with the official BAM thinking that's found on the daily slides or special visibility report slides. This data should be used as a guide only

Houston Pilots Wind Chart



Sustained wind 10 Knots

Gusts 15 Knots

Wind from the SE

Example

10

15

↙

Wind	Fri 3 pm	Fri 4 pm	Fri 5 pm	Fri 6 pm	Fri 7 pm	Fri 8 pm	Fri 9 pm	Fri 10 pm	Fri 11 pm	Sat 12 am	Sat 1 am	Sat 2 am	Sat 3 am	Sat 4 am	Sat 5 am	Sat 6 am	Sat 7 am	Sat 8 am	Sat 9 am	Sat 10 am	Sat 11 am	Sat 12 pm	Sat 1 pm	Sat 2 pm
Houston Pilots N - 610 Bridge	2 ↓	3 ↓	3 ↙	5 ↖	6 ↑	6 ↑	6 ↑	6 ↑	6 ↑	6 ↑	6 ↑	6 ↑	5 ↑	5 ↑	5 ↑	5 ↑	5 ↑	5 ↑	5 ↑	5 ↑	5 ↑	3 ↑	3 ↑	3 ↑
Houston Pilots M - Kinder 1	3 ↓	3 ↓	3 ↙	3 ↖	5 ↑	6 ↑	6 ↑	6 ↑	6 ↑	6 ↑	6 ↑	6 ↑	5 ↑	5 ↑	5 ↑	5 ↑	5 ↑	5 ↑	3 ↑	5 ↑	5 ↑	5 ↑	3 ↑	3 ↑
Houston Pilots L - Greens Bayou	3 ↓	3 ↓	3 ↙	5 ↖	5 ↑	6 ↑	6 ↑	6 ↑	6 ↑	6 ↑	5 ↑	5 ↑	5 ↑	5 ↑	5 ↑	5 ↑	3 ↑	3 ↑	3 ↑	3 ↑	3 ↑	5 ↑	3 ↑	3 ↑
Houston Pilots K - Shell Crude	3 ↓	3 ↓	3 ↙	5 ↖	6 ↑	6 ↑	6 ↑	6 ↑	6 ↑	6 ↑	5 ↑	5 ↑	5 ↑	5 ↑	5 ↑	3 ↑	3 ↑	3 ↑	3 ↑	3 ↑	3 ↑	5 ↑	3 ↑	3 ↑
Houston Pilots J - Lynchburg Ferries	2 ↓	3 ↓	3 ↙	5 ↖	6 ↑	6 ↑	6 ↑	6 ↑	6 ↑	5 ↑	5 ↑	5 ↑	3 ↑	3 ↑	3 ↑	3 ↑	3 ↑	3 ↑	3 ↑	3 ↑	3 ↑	3 ↑	3 ↑	3 ↑
Houston Pilots I - Exxon 3	5 ←	6 ↙	7 ↖	8 ↑	8 ↑	9 ↑	9 ↑	10 ↑	10 ↑	9 ↑	9 ↑	9 ↑	8 ↑	8 ↑	8 ↑	8 ↑	8 ↑	8 ↑	7 ↑	6 ↑	6 ↑	6 ↑	5 ↑	5 ↑
Houston Pilots H - Morgans Point	5 ↙	6 ↖	7 ↑	8 ↑	8 ↑	10 ↑	10 ↑	10 ↑	10 ↑	9 ↑	9 ↑	8 ↑	8 ↑	8 ↑	8 ↑	8 ↑	8 ↑	8 ↑	7 ↑	6 ↑	6 ↑	5 ↑	5 ↑	5 ↑
Houston Pilots G - 75/76	9 ↙	12 ↖	13 ↑	14 ↑	15 ↑	15 ↑	15 ↑	15 ↑	15 ↑	15 ↑	14 ↑	14 ↑	14 ↑	14 ↑	14 ↑	14 ↑	13 ↑	13 ↑	13 ↑	12 ↑	12 ↑	12 ↑	9 ↑	8 ↑
Houston Pilots F - 63/64	5 ↙	6 ↖	7 ↑	8 ↑	9 ↑	10 ↑	10 ↑	10 ↑	10 ↑	10 ↑	10 ↑	9 ↑	9 ↑	9 ↑	9 ↑	9 ↑	9 ↑	9 ↑	8 ↑	8 ↑	8 ↑	7 ↑	6 ↑	3 ↑
Houston Pilots E - 51/52	3 ↙	6 ↖	7 ↑	8 ↑	9 ↑	10 ↑	10 ↑	10 ↑	10 ↑	10 ↑	9 ↑	9 ↑	9 ↑	9 ↑	9 ↑	9 ↑	8 ↑	8 ↑	8 ↑	8 ↑	8 ↑	7 ↑	6 ↑	5 ↑
Houston Pilots D - 37/38	8 ↙	10 ↖	12 ↑	13 ↑	14 ↑	15 ↑	15 ↑	15 ↑	14 ↑	14 ↑	14 ↑	13 ↑	13 ↑	13 ↑	13 ↑	14 ↑	13 ↑	13 ↑	13 ↑	13 ↑	12 ↑	12 ↑	9 ↑	8 ↑
Houston Pilots C - 25/26	3 ↙	6 ↖	7 ↑	8 ↑	8 ↑	9 ↑	9 ↑	9 ↑	9 ↑	9 ↑	8 ↑	8 ↑	8 ↑	8 ↑	8 ↑	8 ↑	8 ↑	8 ↑	8 ↑	8 ↑	8 ↑	7 ↑	6 ↑	5 ↑
Houston Pilots B - 11/12	5 ↙	6 ↖	7 ↑	8 ↑	8 ↑	8 ↑	8 ↑	8 ↑	8 ↑	8 ↑	8 ↑	8 ↑	8 ↑	8 ↑	8 ↑	8 ↑	8 ↑	8 ↑	8 ↑	7 ↑	7 ↑	7 ↑	6 ↑	5 ↑
Houston Pilots A - 1 & 2 Bravo	3 ↑	5 ↑	6 ↑	7 ↑	8 ↑	9 ↑	9 ↑	9 ↑	10 ↑	9 ↑	9 ↑	9 ↑	9 ↑	10 ↑	10 ↑	10 ↑	10 ↑	10 ↑	9 ↑	8 ↑	8 ↑	7 ↑	6 ↑	6 ↑

NOTE: This is automated data that may/may not agree with the official BAM thinking that's found on the daily slides. This data should be used as a guide only.

Houston Pilots: FRI. 8/2/2024



Forecast Discussion

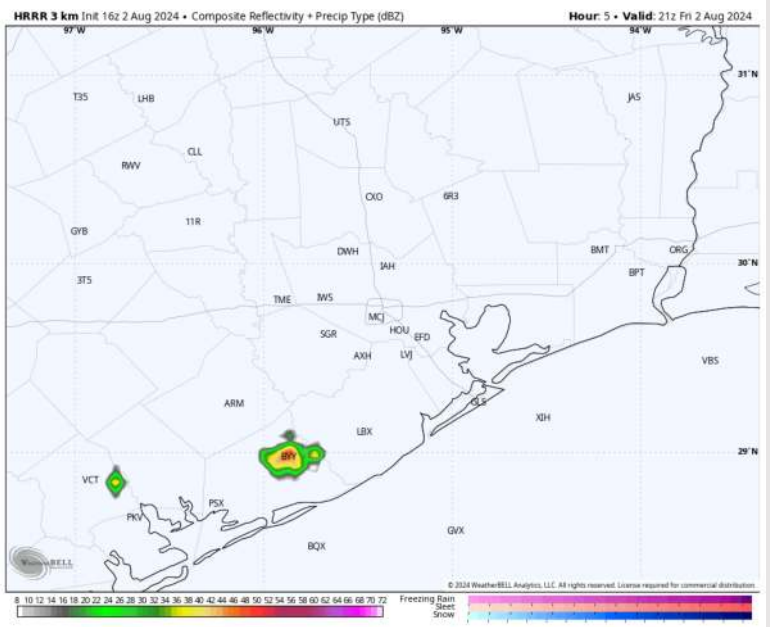
Precip: A couple hit and miss showers / storms may pop up WSW of stations between 3 – 7 PM today however favoring all stations to remain dry!

Wind: Winds will continue to gradually shift out of the WSW through the afternoon. **N of Morgan's Point:** Winds at 6 – 11 kts for the rest of the PM. **S of Morgan's Point:** Winds at 13 - 18 kts for the rest of the day.

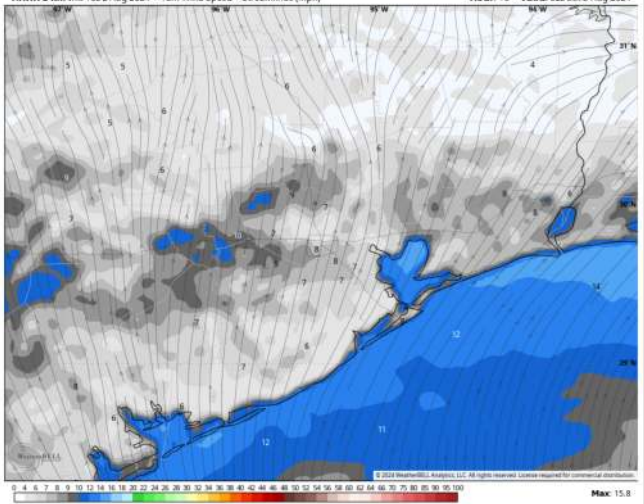
Low Temps: **N of Morgan's Point:** Upper 70s F. **S of Morgan's Point:** Low 80s F.

Visibility: Not anticipating any fog concerns the rest of the day.

Precip Image: 1 PM CT

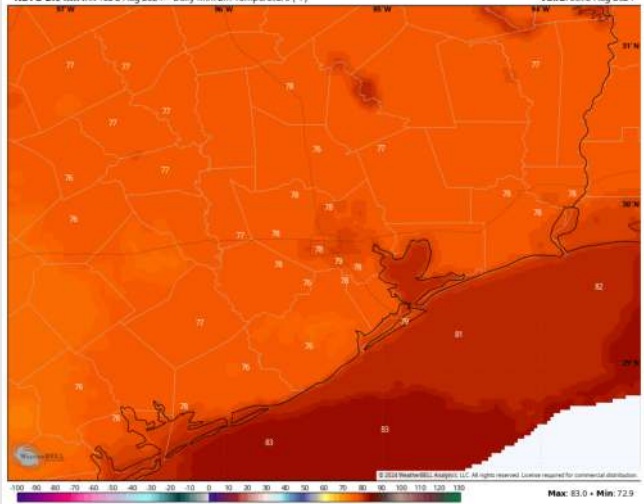


HRRR 3 km Init 16z 2 Aug 2024 • 10m Wind Speed + Streamlines (mph) Hour: 10 • Valid: 02z Sat 3 Aug 2024



Wind Speed
9 PM CT

NDFD 2.5 km Init 18z 2 Aug 2024 • Daily Min. 2m Temperature (°F) Valid: Sat 3 Aug 2024



Low Temps
SAT AM

Houston Pilots: SAT. 8/3/2024



Forecast Discussion

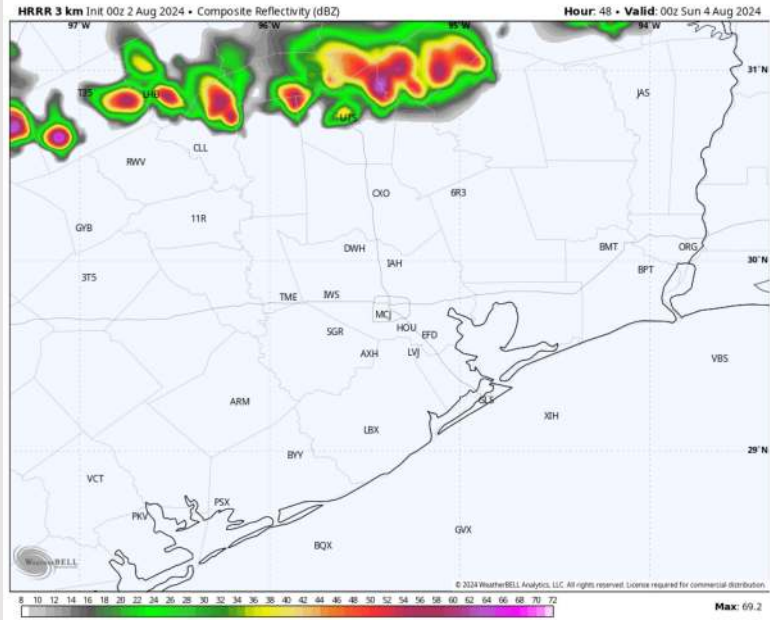
Precip: While dry conditions are currently favored for Saturday, we need to watch the potential for a broken line of storms to maintain intensity and enter the area shortly after 9PM-CT.

Wind: Winds will be out of the W/NW through 5 PM before shifting to be out of the S through the rest of the day. **N of Morgan's Point:** Winds will be at 2 – 7 kts throughout the day Saturday. **S of Morgan's Point:** Winds be at 13 – 18 kts through all of Saturday.

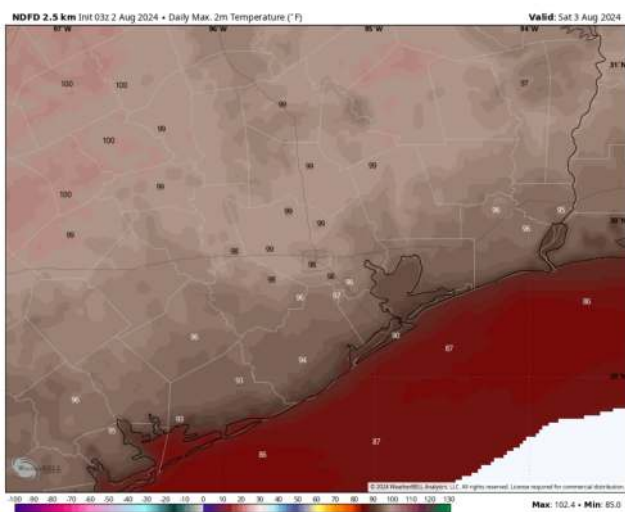
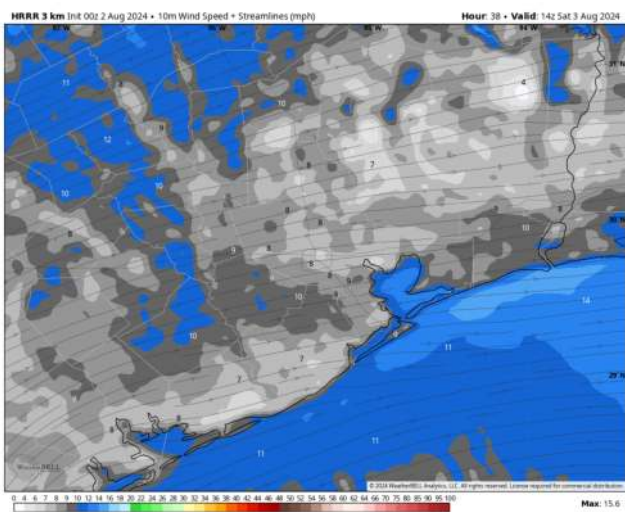
High Temps: **N of Morgan's Point:** Upper 90s F. **S of Morgan's Point:** Upper 80s / Low 90s F.

Visibility: Favoring low end patchy fog potential to remain in areas just surrounding Galv. Bay however this risk in not favored to impact stations.

Precip Image: 7 PM CT



Wind Speed:
9 AM CT



High Temps
Saturday

Houston Pilots: SUN. 8/4/2024



Forecast Discussion

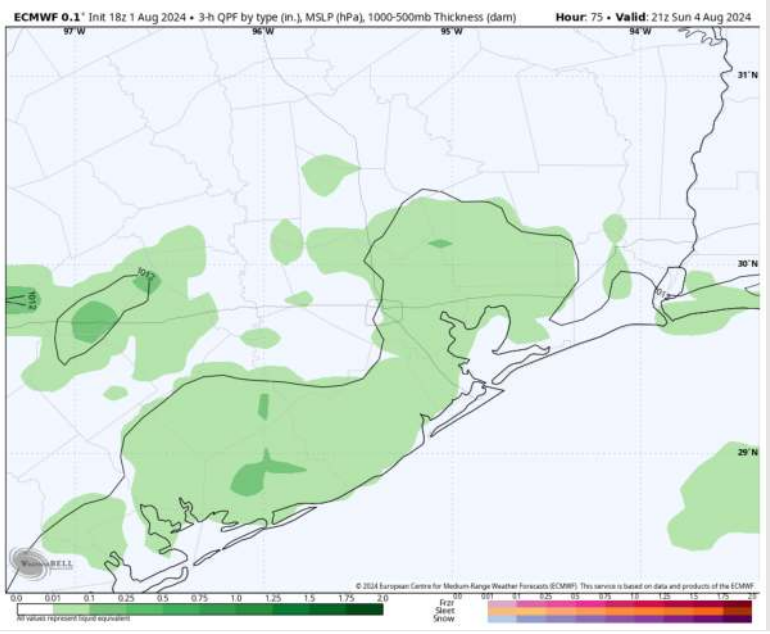
Precip: Pop up downpour/storm risks (30%) will be in play from 1 PM through 8PM for all stations.

Wind: Winds are favored to be calm and variable for much of the day. At 5PM-CT, favoring winds to pick up and shift more out of the southwest. **N of Morgan's Point:** Winds at 3 – 5 kts for the entire day. **S of Morgan's Point:** Winds at 3 – 7 kts for the entire day

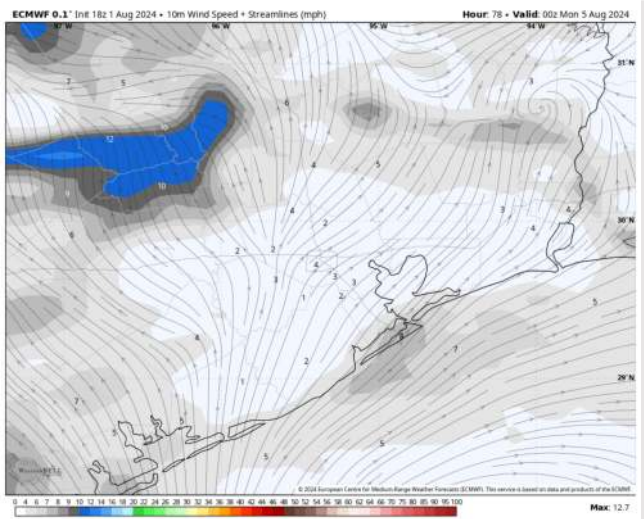
High Temps: **N of Morgan's Point:** Mid 90s F. **S of Morgan's Point:** Near 80 F.

Visibility: No visibility concerns for Sunday.

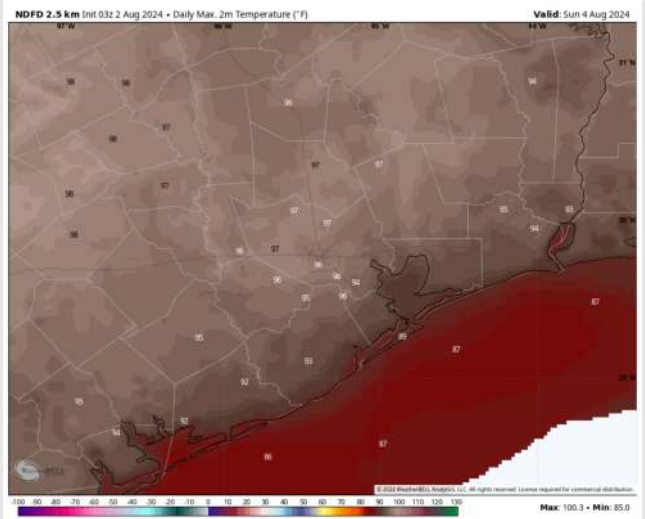
Precip Image: 4 PM CT



Wind Speed: 7 PM CT



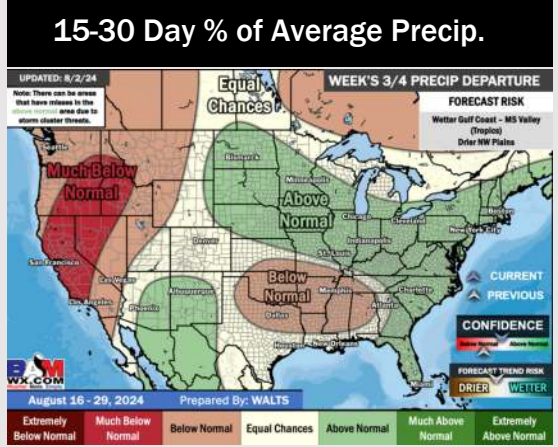
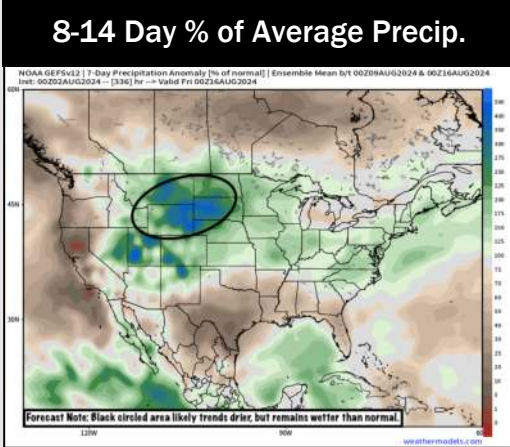
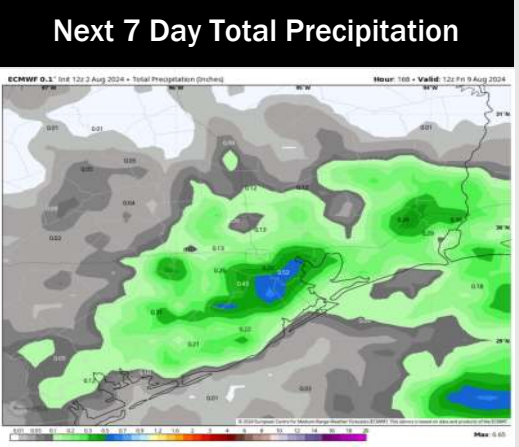
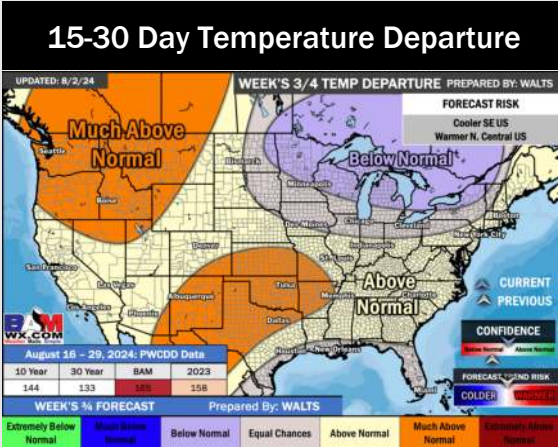
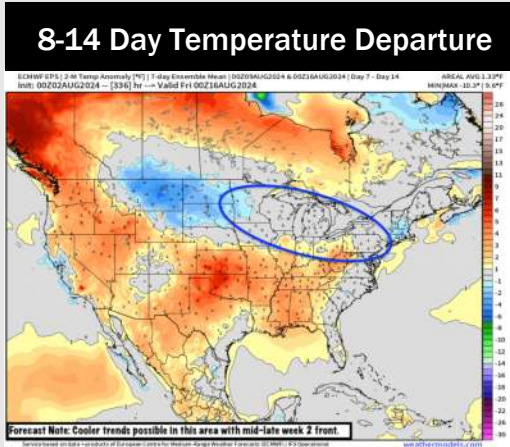
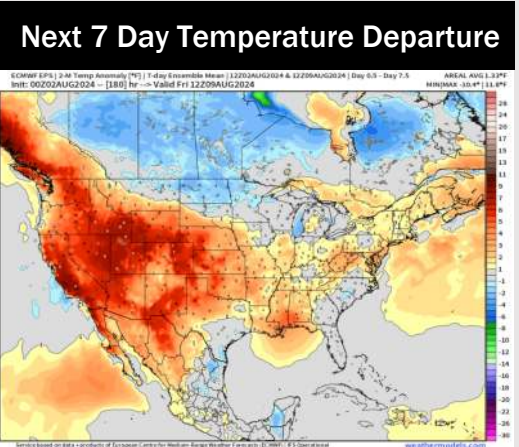
High Temps Sunday



Wind Speed:
7 PM CT

High Temps
Sunday

Houston Pilots: 8/2/24



- Temps are expected to be near normal for the week 1 timeframe. Expecting a generally drier week 1, with only minor precip chances throughout the week.
- Seasonable temperatures and below normal precipitation chances are favored for the week 2 timeframe.
- Near normal temperatures and precipitation chances are expected for the weeks 3/4 timeframe.

Houston Pilots Tropical Update

Late August and Beyond

