

Houston Pilots Forecast Package

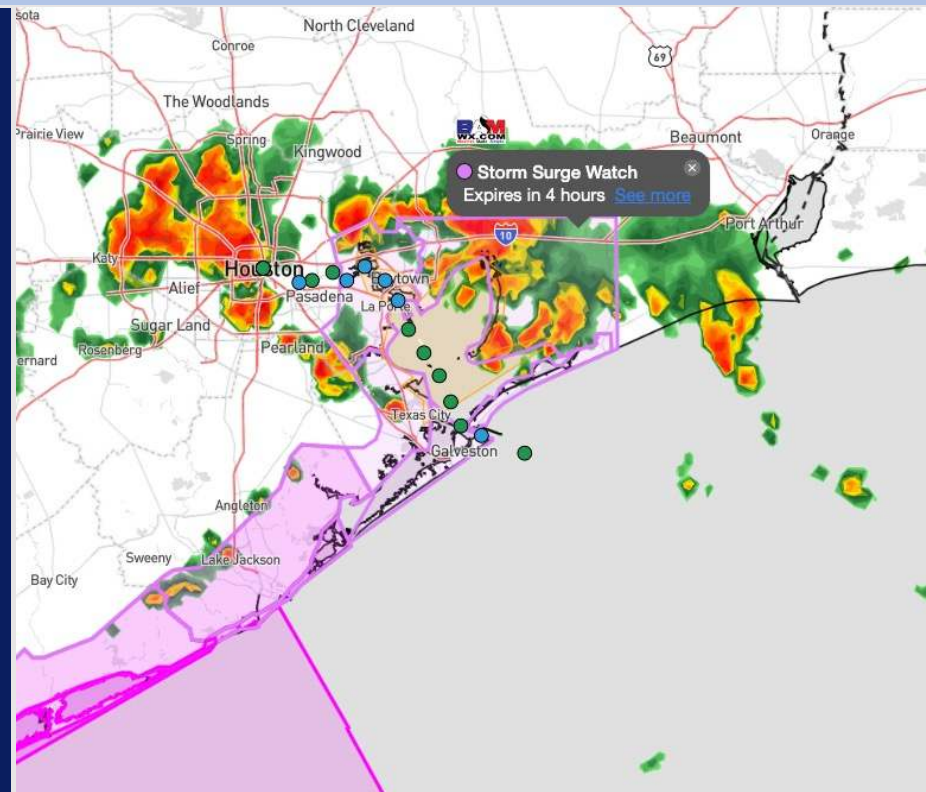


Updated: 2:30 PM CT
Saturday, July 6, 2024

Forecaster: Jonathan Kipper

Weather Headlines

- Storm Surge **Watch** of 2-4 feet is in effect.
- **X-Ray Port Conditions are in effect** (see Trigger slide below).
- Calmer winds are expected through SUN afternoon before increasing due to Tropical Storm Beryl SUN PM and MON.
- The worst conditions will come during the daytime hours Monday (more on timing slide below).
- [Beryl Video \(click here\) 2PM Sat 7/6/24](#)



Current Radar: 2:20 PM CT

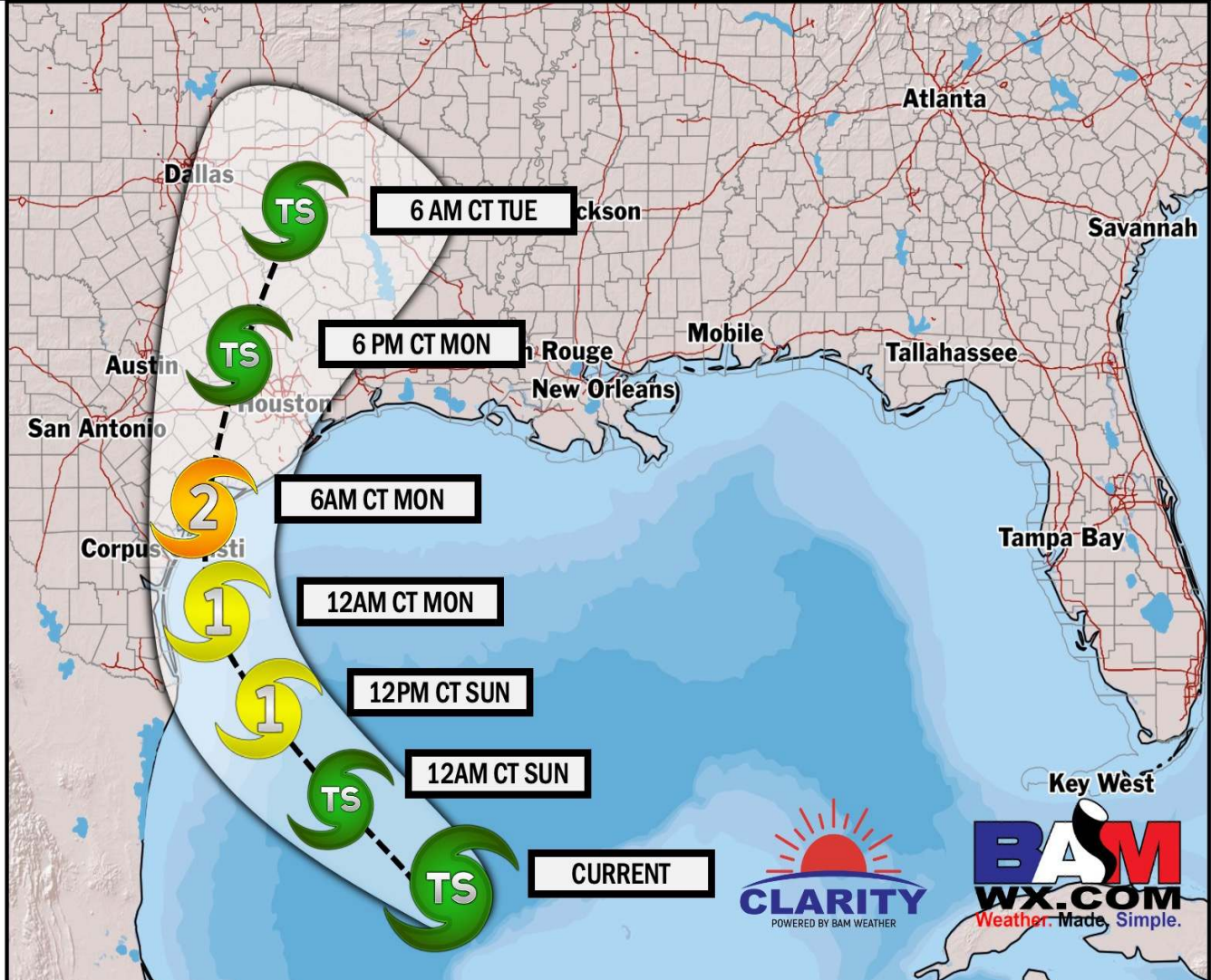


As always, please do not hesitate to reach out to us with any forecast questions via the chat option on Clarity or our on-call number, **(317)-560-8122** press **1** for forecast questions.

Houston Pilots Tropical Update



TROPICAL STORM BERYL OUTLOOK FORECASTER: Kipper
July 6th – July 9th, 2024 UPDATED: 7/6/24 1:30 PM CT



While landfall of Tropical Storm Beryl is favored near Corpus Christi, there will still be impacts felt in the Houston/Galveston area!

Please see the slides below for more detailed info for the Houston/Galveston area.

Map to the left simply shows the favored track of the center of the system. Impacts can (and will) be felt outside of the cone.

Houston Pilots Tropical Update



BOARDING STATION MAIN TAKEAWAYS

Wind Direction: Consistently out of the SE SUN through MON PM, before coming out of the S by 8PM MON night, and then out of the SW all day TUE.

Wind Timing: Highest winds likely come 7AM MON to 6 PM MON.

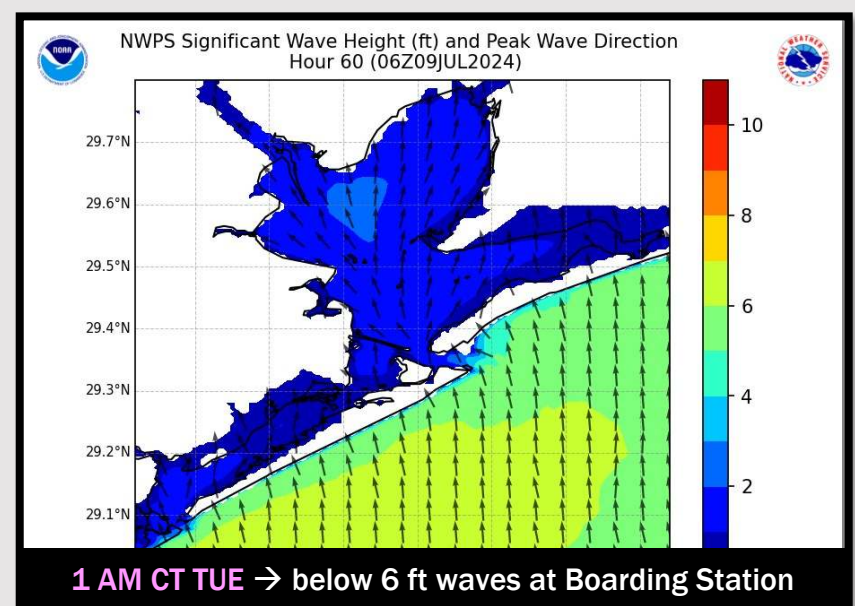
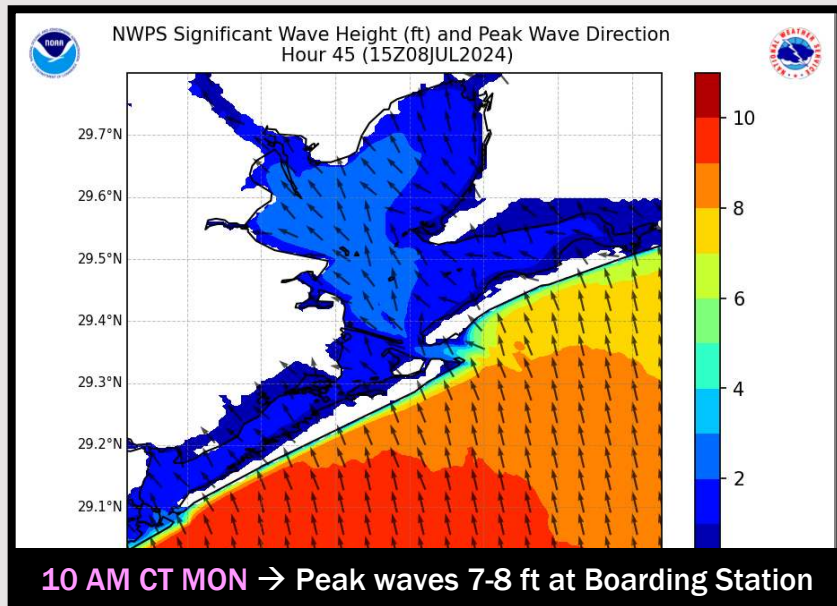
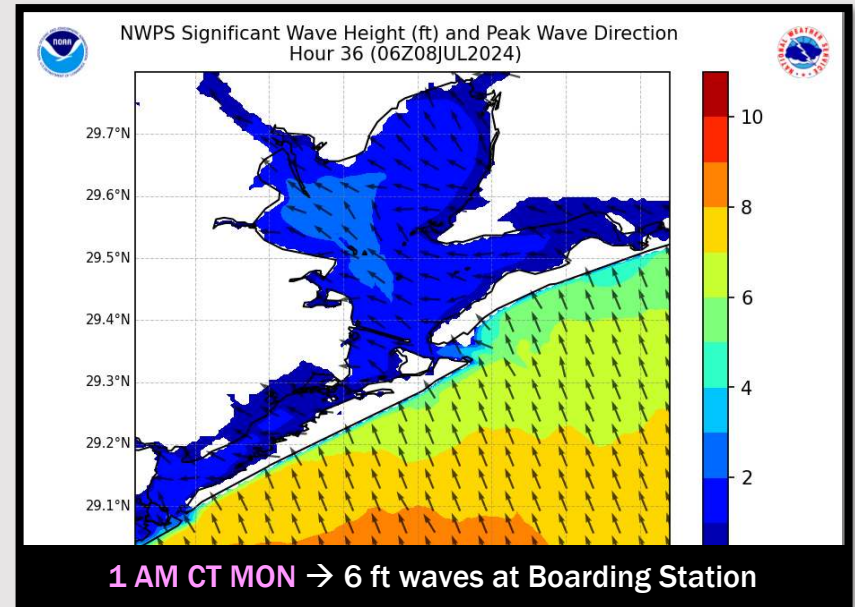
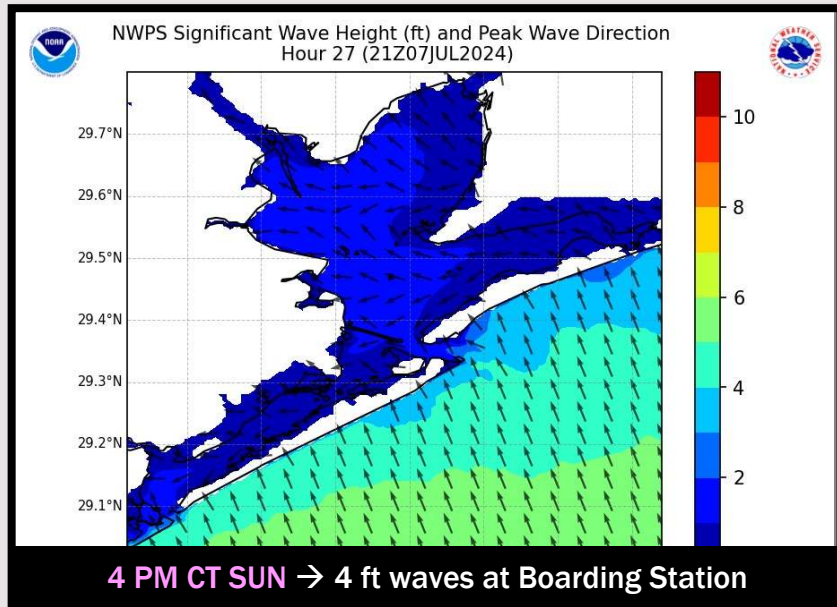
Wind Speed Max: 33-38 knots possible.

Wind Gust Max: 45-55 knots possible.

Wave Heights: Peak wave heights of 6-8 feet will be possible at the boarding station between **1 AM MON and 1 AM TUE.**

Tides: SUN: High: 7:30 AM Low: 10:55 PM
MON: High: 8:25 AM Low: 11:35 PM

Wave Height Forecast Update



Houston Pilots Wave Height Update



Port Condition	34 KTS+ Sustained Wind Trigger Reached at:	6 Foot Wave Trigger Reached at:	Time Remaining/Trigger Ends At:
Victor	—	—	Ended
Whiskey	Past This Trigger	—	Ended
X-Ray	Current	Current	1 AM CT SUN
Yankee	1 AM CT SUN	1 AM CT SUN	1 PM CT SUN
Zulu	1 PM CT SUN	1 PM CT SUN	1 AM CT TUE

Port Condition	Trigger Definition	Trigger Reached?
Victor	Hurricane entering/developing in Gulf of Mexico that's a threat to the area	PAST
Whiskey	72 hours prior to predicted sustained winds of 34+ KTS	PAST
X-Ray	48 hours prior to predicted sustained winds of 34+ KTS or 6' wave height	YES
Yankee	24 hours prior to predicted sustained winds of 34+ KTS or 6' wave height	No
Zulu	12 hours prior to predicted sustained winds of 34+ KTS or 6' wave height	No

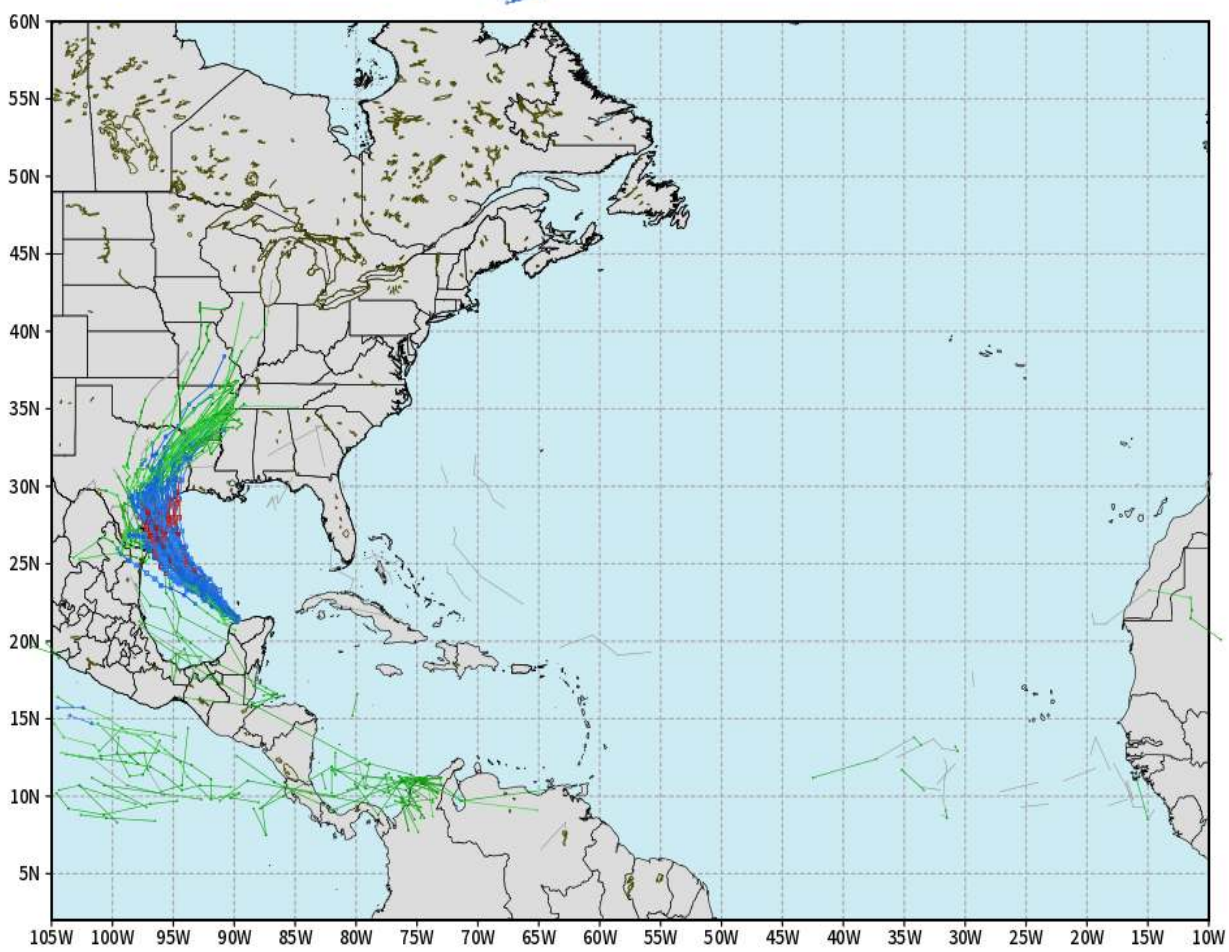
NOTES: As of Sat Afternoon, Tropical Storm Beryl is into the Gulf of Mexico and will gradually intensify back into a hurricane. This storm will push WNW across the Gulf through MON AM, where it will likely make landfall near Corpus Christi. Although slight Northeast trends with the storm track are possible, not anticipating direct landfall in Houston/Galveston at this time. Wave heights expected to be above 6 ft on Monday with winds above 34+ kt threshold.

Houston Pilots Tropical Update

European Model Next 10 Days - Tropical Tracks

ECMWF ATLANTIC EPS Cyclone Locations --> Next [10-days]
INIT: 00Z06JUL2024 --> UNTIL 00Z16JUL2024

- o-o ENSEMBLE MEAN
- o-o 1000 - 1010 hPa
- o-o 980 - 999 hPa
- o-o 960 - 979 hPa
- o-o 950 - 959 hPa
- o-o < 950 hPa



After Tropical Storm Beryl moves out of the area early next week (more on Beryl in previous slides), we are not in favor of additional tropical threats over the next 10-15 days.

Houston Pilots Visibility Chart (miles)



Forecast Confidence



Time	Sat 2pm	Sat 3pm	Sat 4pm	Sat 5pm	Sat 6pm	Sat 7pm	Sat 8pm	Sat 9pm	Sat 10pm	Sat 11pm	Sun 12am	Sun 1am	Sun 2am	Sun 3am	Sun 4am	Sun 5am	Sun 6am	Sun 7am	Sun 8am	Sun 9am	Sun 10am	Sun 11am	Sun 12pm	Sun 1pm
610 Bridge	10	10	10	10	10	10	10	10	10	10	10	10	10	10	10	10	10	9	10	10	10	10	10	10
Kinder 1	10	10	10	10	10	10	10	10	10	10	10	10	10	10	10	10	10	9	10	10	10	10	10	10
Greens Bayou	10	10	10	10	10	10	10	10	10	10	10	10	10	10	10	10	10	9	10	10	10	10	10	10
Shell Crude	10	10	10	10	10	10	10	10	10	10	10	10	10	10	10	10	10	9	10	10	10	10	10	10
Lynchburg Ferries	10	10	10	10	10	10	10	10	10	10	10	10	10	10	10	10	10	9	10	10	10	10	10	10
Exxon 3	10	10	10	10	10	10	10	10	10	10	10	10	10	10	10	10	10	10	10	10	10	10	10	10
Morgans Point	10	10	10	10	10	10	10	10	10	10	10	10	10	10	10	10	10	10	10	10	10	10	10	10
75/76	10	10	10	10	10	10	10	10	10	10	10	10	10	10	10	10	10	10	10	10	10	10	10	9
63/64	10	10	10	10	10	10	10	10	10	10	10	10	10	10	10	10	10	10	10	10	10	10	10	9
51/52	10	10	10	10	10	10	10	10	10	10	10	10	10	10	10	10	10	10	10	10	10	10	10	9
37/38	10	10	10	10	10	10	10	10	10	10	10	10	10	10	10	10	10	10	10	10	10	10	10	9
25/26	10	10	10	10	10	10	10	10	10	10	10	10	10	10	10	10	10	10	10	10	10	10	10	10
11/12	10	10	10	10	10	10	10	10	10	10	10	10	10	10	10	10	10	10	10	10	10	10	10	10
1 & 2 Bravo	10	10	10	10	10	10	10	10	10	10	10	10	10	10	10	10	10	10	10	10	10	10	7	10

NOTE: This is automated data that may/may not agree with the official BAM thinking that's found on the daily slides or special visibility report slides. This data should be used as a guide only

Houston Pilots Wind Chart



Forecast Confidence



Sustained wind 13 Knots
Gusts 18 Knots
Wind from the N

Example

WS: 13
G:18
N

Time Knots	Sat 2pm	Sat 3pm	Sat 4pm	Sat 5pm	Sat 6pm	Sat 7pm	Sat 8pm	Sat 9pm	Sat 10pm	Sat 11pm	Sun 12am	Sun 1am	Sun 2am	Sun 3am	Sun 4am	Sun 5am	Sun 6am	Sun 7am	Sun 8am	Sun 9am	Sun 10am	Sun 11am	Sun 12pm	Sun 1pm
610 Bridge	3	4	4	4	4	5	4	3	3	3	2	2	2	2	3	3	3	3	3	4	5	6	7	7
	8	8	9	8	8	8	7	7	6	6	5	6	5	5	5	6	6	6	7	8	9	10	12	14
Kinder 1	SE	E	E	E	SE	ESE	ESE	E	E	E	E	NE	NE	NE	NE	NE	NE	NE	NE	ENE	E	ESE	ESE	ESE
	3	4	4	4	4	4	3	3	3	2	2	2	2	2	3	3	3	3	3	4	5	6	7	7
Greens Bayou	8	8	9	8	8	8	7	7	6	6	5	5	4	5	5	5	6	7	7	9	10	12	14	15
	E	E	E	ESE	SE	ESE	ESE	E	E	ENE	E	ENE	NE	NE	NE	NE	NE	NE	NE	ENE	E	ESE	ESE	ESE
Shell Crude	3	4	5	5	4	4	3	3	3	2	2	2	2	2	2	3	3	3	3	4	5	6	7	7
	8	8	9	8	8	8	7	7	6	6	5	6	5	5	5	5	6	7	8	9	10	12	14	15
Lynchburg Ferries	E	E	E	ESE	SE	ESE	ESE	ENE	E	E	E	ENE	NE	NE	NE	NE	NNE	NE	NE	ENE	E	ESE	ESE	ESE
	5	5	6	6	6	6	6	5	5	5	5	5	5	5	5	5	6	6	6	7	7	8	9	9
Exxon 3	8	9	11	10	10	9	9	8	7	7	7	7	7	7	7	7	8	9	9	10	12	13	15	16
	NE	ESE	E	SE	SE	SE	SE	E	E	E	E	E	NE	NE	NE	NE	NE	NE	ENE	ENE	E	ESE	ESE	ESE
Morgans Point	5	6	6	6	6	6	6	5	5	5	5	5	5	5	5	5	6	6	7	7	7	8	9	10
	8	9	10	10	10	9	9	8	7	7	7	7	7	7	7	8	8	9	10	11	12	13	15	16
75/76	SE	SE	E	ESE	ESE	SE	ESE	E	ENE	E	E	ENE	NE	NE	NE	NE	NE	NE	ENE	E	ESE	ESE	ESE	ESE
	5	5	6	6	7	7	7	7	6	6	6	6	6	6	6	6	6	7	7	7	8	9	9	10
63/64	8	9	10	10	10	9	9	9	8	8	8	8	8	8	9	9	9	10	11	12	13	14	15	17
	SE	SE	ESE	E	SE	SE	SE	ESE	E	E	E	E	E	E	E	E	ENE	ENE	ENE	ENE	E	E	E	ESE
51/52	4	5	5	5	6	6	6	6	6	6	6	6	6	6	6	6	7	7	7	8	9	9	10	11
	8	8	9	9	9	9	9	9	9	9	9	8	9	9	9	9	10	11	12	13	14	15	16	18
37/38	SSE	SSE	E	ESE	ESE	SE	ESE	ESE	E	E	E	E	E	E	E	E	E	E	E	E	E	E	E	ESE
	4	5	5	6	6	6	6	6	6	6	6	6	6	6	6	7	7	7	8	9	9	10	11	11
25/26	8	8	9	9	9	9	9	8	9	8	9	9	9	9	10	10	10	10	11	12	13	14	16	18
	SSE	SSE	ESE	ESE	E	ESE	ESE	ESE	E	E	E	E	E	E	E	E	E	E	E	E	E	E	E	E
11/12	5	5	5	6	6	6	5	5	5	5	5	5	5	5	6	6	6	7	7	8	9	10	11	11
	8	8	9	8	8	8	9	8	9	8	9	9	9	9	10	10	10	11	12	13	14	15	17	18
1 & 2 Bravo	SSE	SSE	SSE	ESE	ENE	ESE	E	ESE	E	E	E	E	E	E	E	E	E	E	E	E	E	E	E	E
	4	4	5	5	5	6	6	6	7	7	7	7	7	7	7	7	8	8	9	9	10	11	11	13
	7	8	8	8	8	9	9	9	9	9	10	10	10	11	11	12	12	13	13	15	16	17	18	19
	SSE	SSE	SSE	SE	E	E	ESE	ESE	E	E	ESE	E	E	E	E	E	E	E	E	E	E	ESE	E	E

NOTE: This is automated data that may/may not agree with the official BAM thinking that's found on the daily slides. This data should be used as a guide only.

Houston Pilots: Sat. 7/6/2024



Forecast Discussion

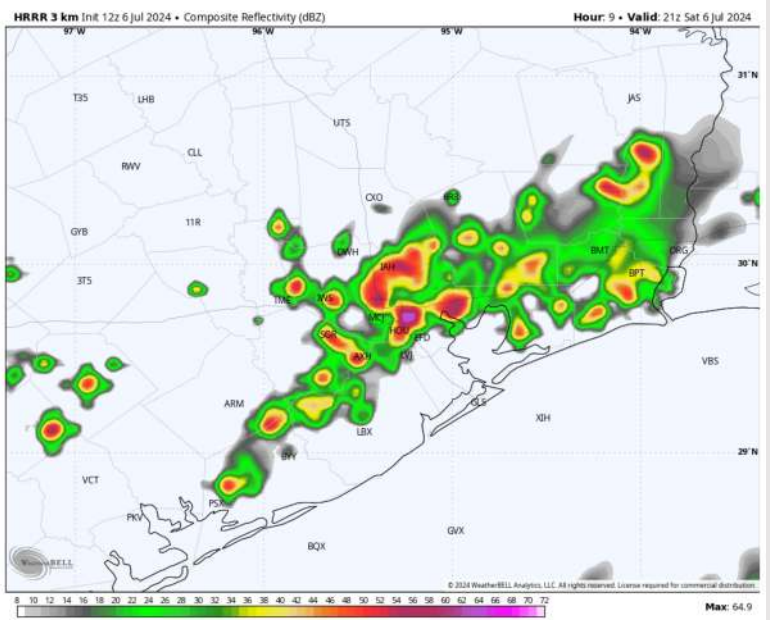
Precip: Scattered showers/storms will continue to work N/NW across the area SAT PM, with greatest risk N of Morgan's Point. Anticipating storms to move out by 8 PM, with dry conditions favored afterwards. **Wind gusts of 25-35 kts possible with strongest storms.**

Wind: Winds will remain fairly variable throughout most of the day, settling out of the SE ~8 PM. **N of Morgan's Point:** Winds at 3-8 kts throughout the day. **S of Morgan's Point:** Winds at 6-11 kts the rest of the day.

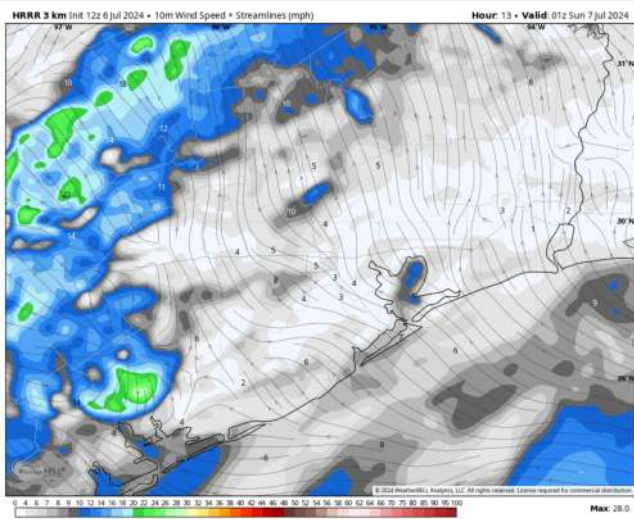
Low Temps: **N of Morgan's Point:** Near 80 F. **S of Morgan's Point:** Mid 80s=s F.

Visibility: Not anticipating any fog concerns for today.

Precip Image: 4 PM CT

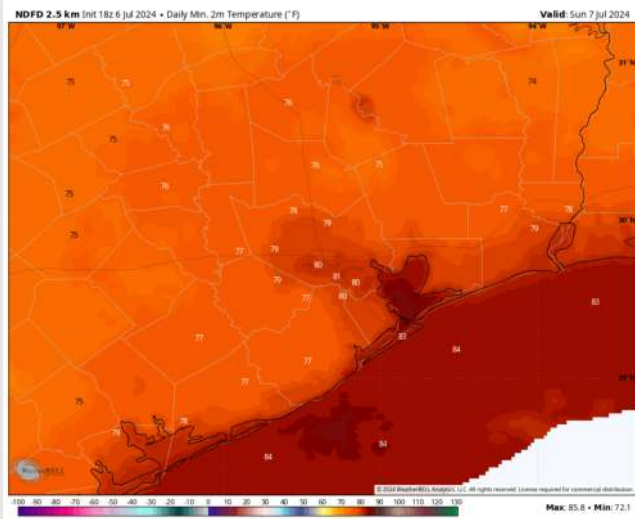


Wind Speed: 8 PM CT



Wind Speed:
8 PM CT

Low Temps SUN AM



Low Temps
SUN AM

Houston Pilots: Sun. 7/7/2024



Forecast Discussion

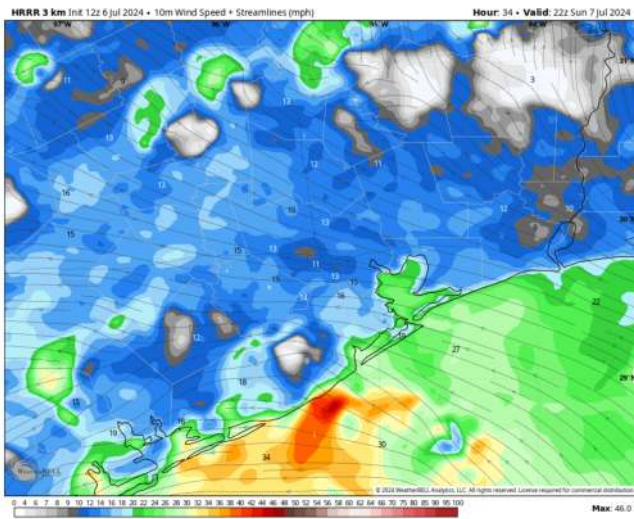
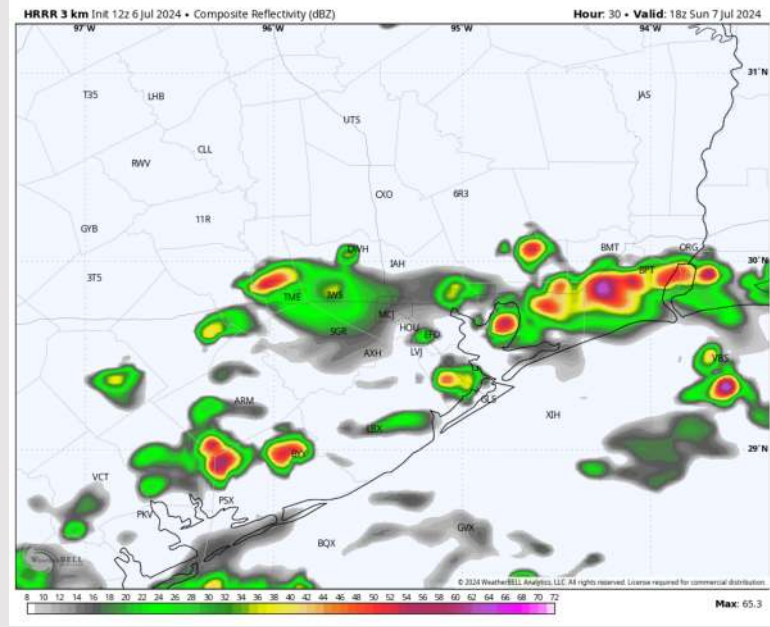
Precip: A few isolated bands of precip scattered showers/storms from Beryl will be possible in the AM to early PM hours, with more scattered to widespread rains likely not working in until after 6 PM. **Tornadoes will be possible with any strong storms!**

Wind: Winds will be out SE throughout the day. **N of Morgan's Point:** Winds at 3 - 8 kts through the AM, increasing to 8- 13 kts after 12 PM. **S of Morgan's Point:** Favoring winds 10-15 kts through 8 AM, then winds increase to 20 - 25 kts by 11 AM, remaining there the rest of SUN. **Wind gusts of 25-35 kts S of Morgan's Point will be possible after 7 PM CT**

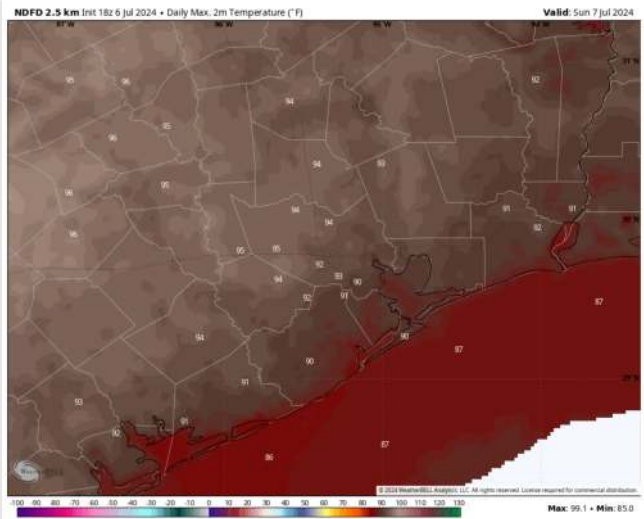
High Temps: **N of Morgan's Point:** Low 90s F. **S of Morgan's Point:** Upper 80s F.

Visibility: Fog is not favored for SUN however heavier downpours can result in reduced visibilities.

Precip Image: 1 PM CT



Wind Speed
5 PM CT



High Temps
Sunday

Houston Pilots: Mon. 7/8/2024



Forecast Discussion

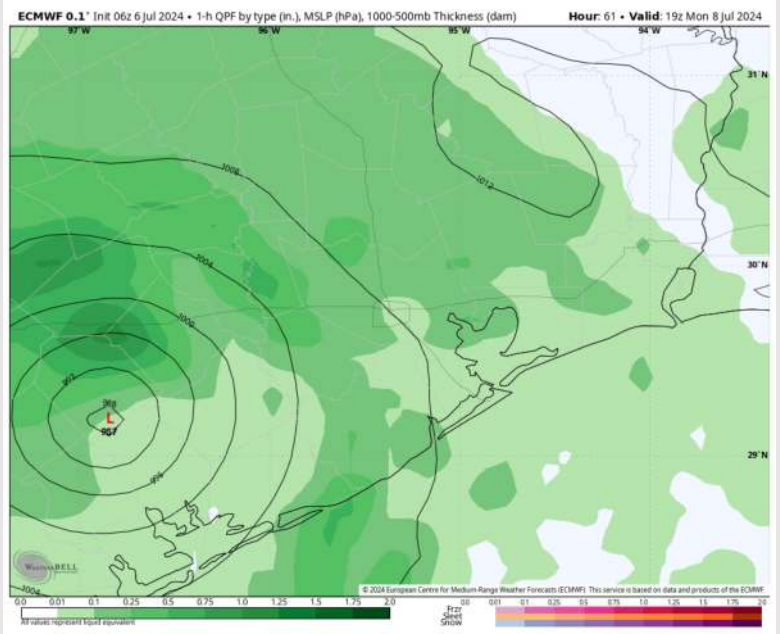
Precip: Anticipating widespread moderate/heavy rain associated with Tropical Storm Beryl to work throughout the area all of MON. See tropical slide(s) above for more in ON exact timing/impacts related to Beryl.

Wind: Winds will be out of the SE through ~8 PM before shifting to being out of the South. **N of Morgan's Point:** Winds start at 13-18 kts and gradually increasing throughout the day. **Wind peak at 25-35 kts from 2-8 PM CT, gradually calming afterwards.** **S of Morgan's Point:** Winds begin at 25-30 kts, gradually increasing to 33-38 kts by 1 PM. Winds continue at this rate through ~7 PM CT before gradually decreasing. **Wind gusts of 30-35+ kts will be prevalent at ALL STATIONS MON. Peak gusts of 45-55 knots will be possible at the Boarding Station.**

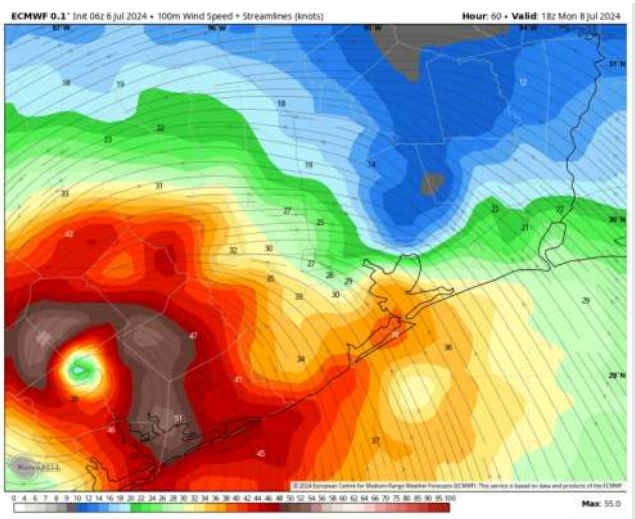
High Temps: **N of Morgan's Point:** Mid 80s F. **S of Morgan's Point:** High 80s F.

Visibility: Reduced visibilities will be present MON associated with heavy rainfall.

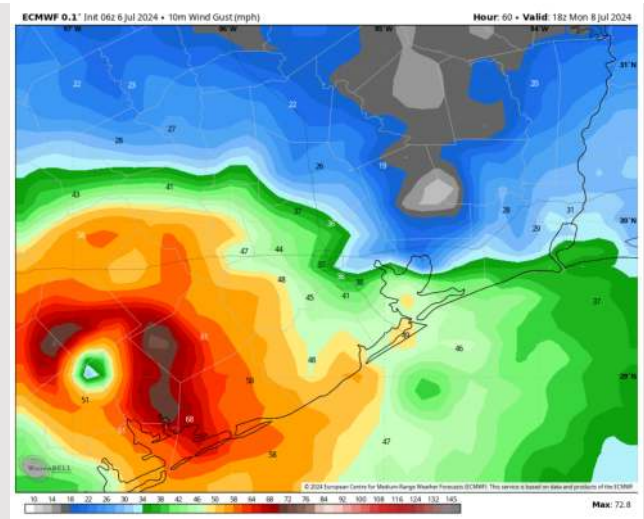
Precip Image: 2 PM CT



Wind Speed:
1 PM CT



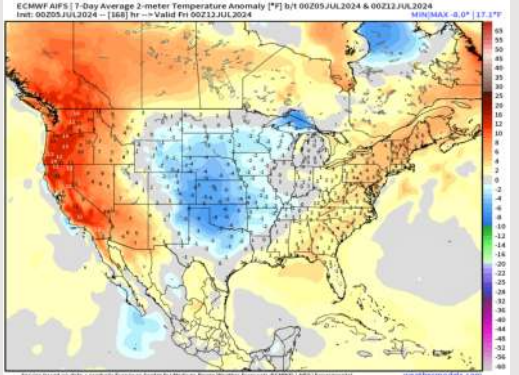
Wind Gusts:
1 PM CT



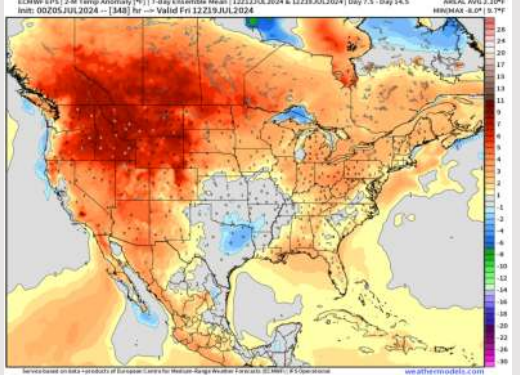
Houston Pilots: 7/6/24



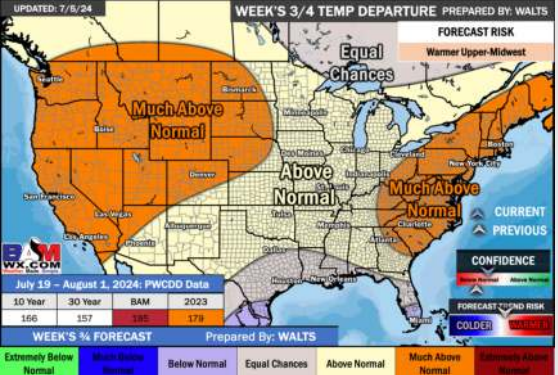
Next 7 Day Temperature Departure



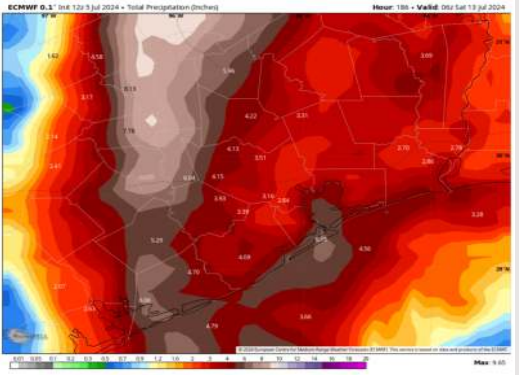
8-14 Day Temperature Departure



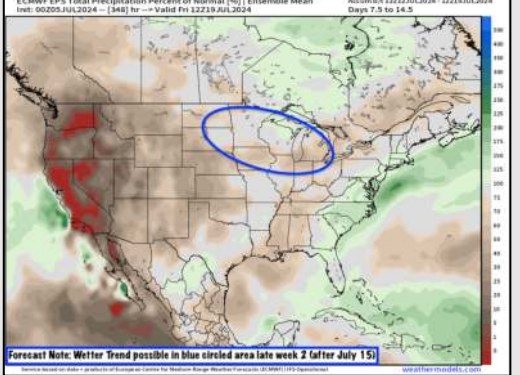
15-30 Day Temperature Departure



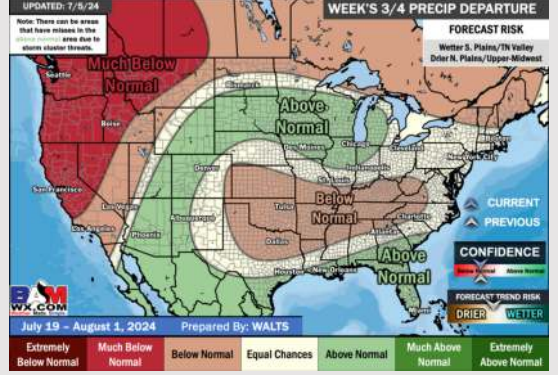
Next 7 Day Total Precipitation



8-14 Day % of Average Precip.



15-30 Day % of Average Precip.



- Temps are expected to be slightly above normal for the week 1 timeframe. Heavy Rainfall associated with Tropical Storm Beryl will work through MON/TUE.
- Models are favoring slightly below normal precipitation for the week 2 timeframe. Near normal temperatures are favored for week 2.
- Above normal chances for precipitation and near normal temperatures are favored in the weeks 3/4 timeframe.