

# Houston Pilots Forecast Package



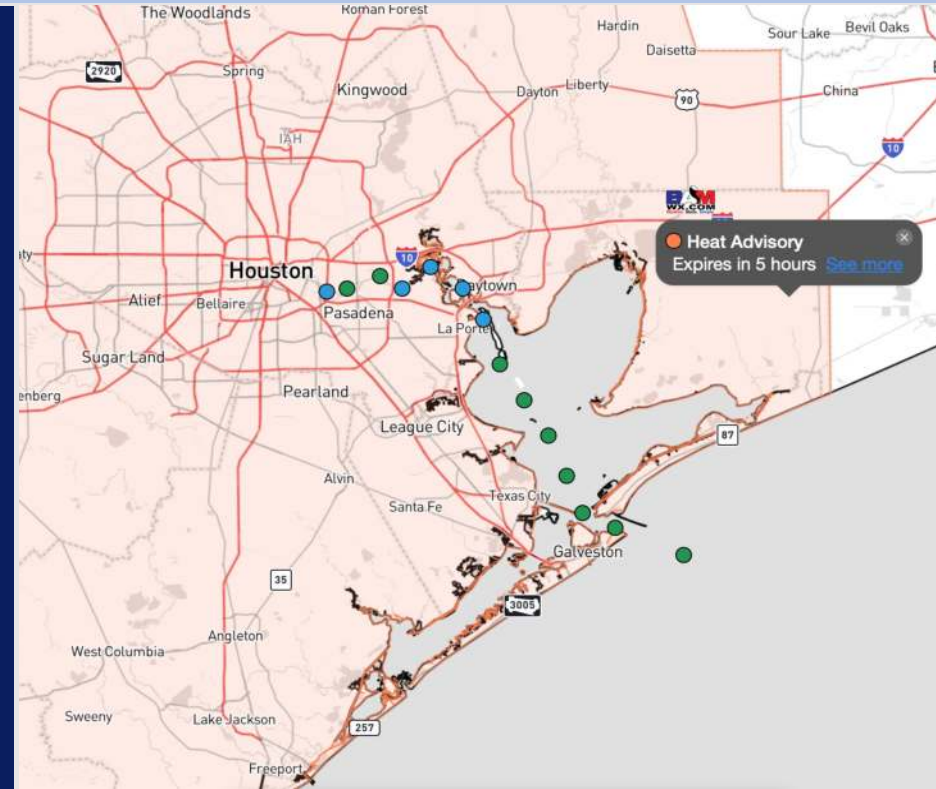
Updated: 2:45 PM CT

Friday, July 5, 2024

Forecaster: Alyssa Elliott

## Weather Headlines

- A few isolated rain chances the next couple days with the best chances moving in SUN PM.
- Winds are not expected to exceed 20 kts over the next few days. Need to watch for an increase in winds SUN-MON due to Beryl.
- **Monitoring Hurricane Beryl that is moving across the Yucatan. See graphics below for latest thinking!**
- **Hurricane Beryl Video Update 7/5**



Current Radar: 2:45 PM CT



As always, please do not hesitate to reach out to us with any forecast questions via the chat option on Clarity or our on-call number, **(317)-560-8122** press **1** for forecast questions.

# Houston Pilots Wave Height Update



Port Condition	34 KTS+ Sustained Winds	6 Foot Waves	Time Remaining/Trigger End
Victor	No	N/A	N/A
Whiskey	IN EFFECT	N/A	6 AM CT SAT
X-Ray	6 AM CT SAT	6 AM CT SAT	6 AM CT SUN
Yankee	6 AM CT SUN	6 AM CT SUN	6 PM CT SUN
Zulu	6 PM CT SUN	6 PM CT SUN	6 PM CT MON

Port Condition	Trigger Definition	Trigger Reached?
Victor	Hurricane entering/developing in Gulf of Mexico that's a threat to the area	No
Whiskey	72 hours prior to predicted sustained winds of 34+ KTS	YES
X-Ray	48 hours prior to predicted sustained winds of 34+ KTS or 6' wave height	No
Yankee	24 hours prior to predicted sustained winds of 34+ KTS or 6' wave height	No
Zulu	12 hours prior to predicted sustained winds of 34+ KTS or 6' wave height	No

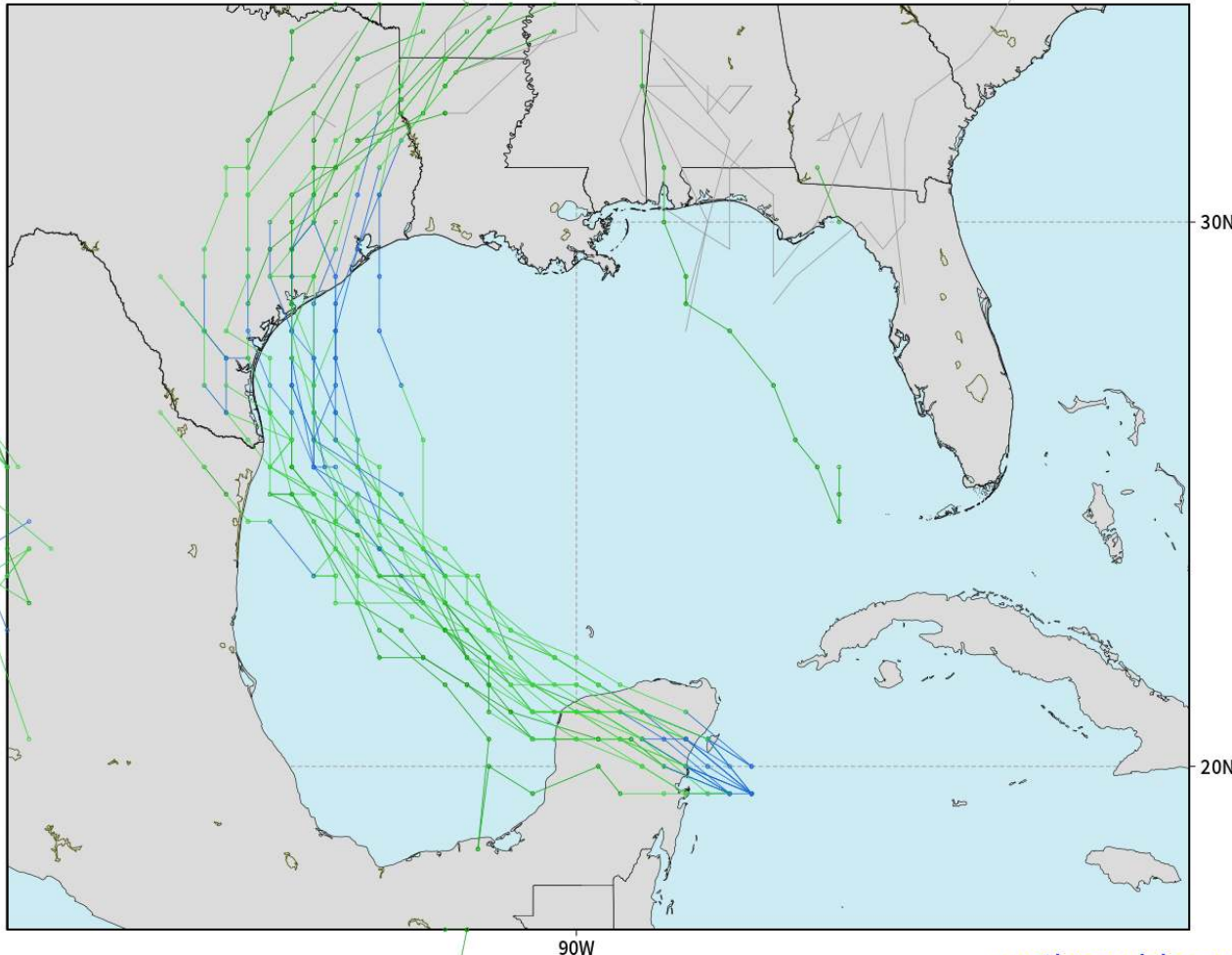
**NOTES:** As of FRI PM, Hurricane Beryl is over the Yucatan Peninsula as a Category 2. This storm is expected to push WNW into the Gulf of Mexican by late this evening where it will then track into S. TX near Corpus Christi. Not anticipating direct impacts to Houston/Galveston at this time, however waves heights expected to be near 6 ft on Monday with winds near the 34+ kt threshold.

# Houston Pilots Tropical Update

## American Model Next 10 Days - Tropical Tracks

NOAA GFSv12 | All Ensemble Cyclones +240 Hours  
INIT: 06Z05JUL2024 --> UNTIL 06Z15JUL2024

o-o > 1010 hPa  
o-o 1000 - 1010 hPa  
o-o 980 - 999 hPa  
o-o 960 - 979 hPa  
o-o 950 - 959 hPa  
o-o < 950 hPa



weathermodels.com

Hurricane Beryl continues to work across the Yucatan after making landfall as a Category 2. (See Next Slide for More Info).

We are still keeping an eye on the exact track of this storm, however at this time favored the storm to move into S TX near Corpus Christi early Monday morning.

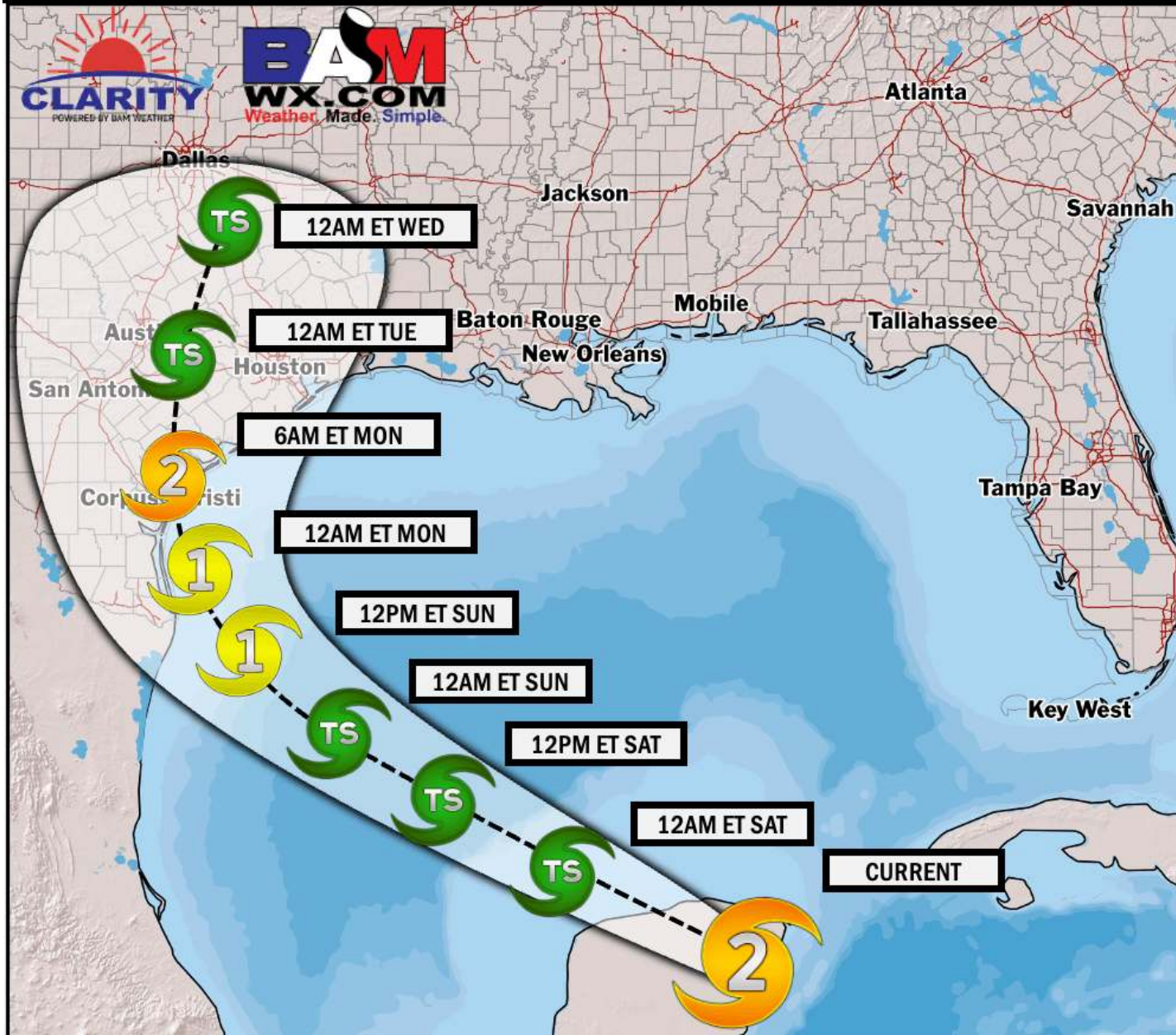
Victor port conditions have been triggered as Hurricane Beryl continues to push into the Gulf of Mexico.



# HURRICANE BERYL OUTLOOK

FORECASTER: Walts  
UPDATED: 7/5/24 9:00 AM ET

July 5<sup>th</sup> - July 10<sup>th</sup>, 2024



# Houston Pilots Visibility Chart (miles)



## Forecast Confidence



Time	Fri 3pm	Fri 4pm	Fri 5pm	Fri 6pm	Fri 7pm	Fri 8pm	Fri 9pm	Fri 10pm	Fri 11pm	Sat 12am	Sat 1am	Sat 2am	Sat 3am	Sat 4am	Sat 5am	Sat 6am	Sat 7am	Sat 8am	Sat 9am	Sat 10am	Sat 11am	Sat 12pm	Sat 1pm	Sat 2pm	
610 Bridge	10	10	10	10	10	10	10	10	10	10	10	10	10	10	10	10	10	10	10	10	10	10	10	10	
Kinder 1	10	10	10	10	10	10	10	10	10	10	10	10	10	10	10	10	10	10	10	10	10	10	10	10	
Greens Bayou	10	10	10	10	10	10	10	10	10	10	10	10	10	10	10	10	10	10	10	10	10	10	10	10	
Shell Crude	10	10	10	10	10	10	10	10	10	10	10	10	10	10	10	10	10	10	10	10	10	10	10	10	
Lynchburg Ferries	10	10	10	10	10	10	10	10	10	10	10	10	10	10	10	10	10	10	10	10	10	10	10	10	
Exxon 3	10	10	10	10	10	10	10	10	10	10	10	10	10	10	10	10	10	10	10	10	10	10	10	10	
Morgans Point	10	10	10	10	10	10	10	10	10	10	10	10	10	10	10	10	10	10	10	10	10	10	10	10	
75/76	10	10	10	10	10	10	10	10	10	10	10	10	10	10	10	10	10	10	10	10	10	10	10	10	
63/64	10	10	10	10	10	10	10	10	10	10	10	10	10	10	10	10	10	10	10	10	10	10	10	10	
51/52	10	10	10	10	10	10	10	10	10	10	10	10	10	10	10	10	10	10	10	10	10	10	10	10	
37/38	10	10	10	10	10	10	10	10	10	10	10	10	10	10	10	10	10	10	10	10	10	10	10	10	
25/26	10	10	10	10	10	10	10	10	10	10	10	10	10	10	10	10	10	10	10	10	10	10	10	10	
11/12	10	10	10	10	10	10	10	10	10	10	10	10	10	10	10	10	10	10	10	10	10	10	10	10	
1 & 2 Bravo	10	10	10	10	10	10	10	10	10	10	10	10	10	10	10	10	10	10	10	9	9	9	9	10	10

**NOTE: This is automated data that may/may not agree with the official B.A.M. thinking that's found on the daily slides or special visibility report slides. This data should be used as a guide only**

# Houston Pilots Wind Chart



## Forecast Confidence



Sustained wind 13 Knots  
Gusts 18 Knots  
Wind from the N

## Example

WS: 13  
G:18  
N

Time Knots	Fri 3pm	Fri 4pm	Fri 5pm	Fri 6pm	Fri 7pm	Fri 8pm	Fri 9pm	Fri 10pm	Fri 11pm	Sat 12am	Sat 1am	Sat 2am	Sat 3am	Sat 4am	Sat 5am	Sat 6am	Sat 7am	Sat 8am	Sat 9am	Sat 10am	Sat 11am	Sat 12pm	Sat 1pm	Sat 2pm	
610 Bridge	3	4	5	6	7	6	5	5	4	3	3	3	2	2	2	2	2	2	2	2	3	3	3	3	
	8	9	10	11	12	11	10	9	8	7	7	6	6	6	5	4	4	4	4	4	5	5	7	7	8
	S	S	S	S	S	S	S	S	S	SSW	SSW	SSW	SW	WSW	W	W	W	W	W	WNW	NW	N	NNE	NE	
Kinder 1	4	5	5	6	7	6	5	5	4	3	3	3	2	2	2	2	2	2	2	2	3	3	3	3	
	8	9	11	11	12	11	10	9	8	7	7	6	6	6	5	4	4	4	4	4	5	5	7	7	8
	S	SSE	S	S	S	S	S	S	S	SSW	SSW	SSW	SW	WSW	W	W	W	W	W	WNW	NW	NNW	NNE	NE	
Greens Bayou	4	5	5	6	7	6	5	4	3	3	3	2	2	2	2	1	1	1	1	2	2	3	3	4	
	8	9	11	11	12	11	10	9	7	6	6	6	6	6	5	4	4	4	4	4	5	6	7	8	8
	S	SSE	SSE	SSE	S	S	S	S	S	SSW	SSW	SSW	SW	WSW	W	W	W	W	W	WNW	NW	N	NNE	E	
Shell Crude	4	5	5	6	7	6	5	4	3	3	3	2	2	2	2	1	1	1	1	2	2	3	3	4	
	8	9	11	11	12	11	10	9	7	6	6	6	6	6	5	4	4	4	4	4	5	6	7	8	8
	SSE	SSE	SSE	SSE	S	S	S	S	S	SSW	SSW	SSW	SW	WSW	W	W	W	W	W	WNW	NW	NW	NNE	E	
Lynchburg Ferries	4	5	5	6	7	5	5	4	3	3	3	2	2	2	1	1	1	1	1	2	3	3	3	3	
	8	9	11	11	13	11	10	9	7	6	6	6	5	5	5	4	4	4	4	4	5	6	7	8	8
	SSE	SSE	SSE	SSE	S	S	S	S	S	SSW	SSW	SSW	SW	WSW	W	WNW	WNW	WNW	WNW	WNW	WNW	NW	N	NNE	E
Exxon 3	6	7	8	9	9	9	9	7	7	6	5	5	5	5	4	3	3	3	3	3	3	3	4	5	
	11	12	13	13	13	12	12	11	9	8	8	7	6	6	6	5	5	5	5	6	6	6	8	8	10
	SSE	SSE	SSE	S	S	S	S	S	S	SSW	SSW	SSW	SW	WSW	WSW	WNW	WNW	WNW	WNW	NW	NNW	N	E	SE	
Morgans Point	7	7	8	9	9	9	8	7	7	6	5	5	5	5	4	3	3	3	3	3	3	3	4	5	
	11	12	13	13	13	13	12	11	9	8	8	7	6	6	6	5	6	5	6	6	6	6	8	8	10
	SSE	SSE	SSE	S	S	S	S	S	SSW	SSW	SSW	SW	WSW	W	N	W	W	WNW	WNW	WNW	NNW	E	SE	SE	
75/76	6	7	8	9	10	9	9	8	7	7	6	6	5	5	5	5	5	4	4	4	3	3	4	5	
	11	12	13	14	14	13	13	12	10	9	8	8	8	7	7	6	6	6	6	6	7	8	8	9	
	SSE	SSE	SSE	S	S	S	S	SSW	SSW	SSW	SSW	SW	WSW	W	NNW	W	W	WNW	WNW	WNW	W	SE	SE	SSE	
63/64	5	7	8	9	9	9	9	8	7	7	6	6	5	5	5	5	5	4	4	4	3	3	4	5	
	10	12	13	13	14	13	12	12	10	9	8	8	8	7	7	7	7	6	6	6	6	7	8	9	
	SSE	SSE	S	S	S	S	SSW	SSW	SSW	SSW	SSW	SW	WSW	W	NNW	W	WNW	WNW	WNW	NW	NNW	ESE	SE	SSE	
51/52	5	7	8	9	9	9	9	8	7	7	6	6	5	5	5	5	5	4	4	4	3	3	3	4	
	10	12	13	13	13	13	12	12	10	9	8	8	8	7	7	7	7	6	6	6	6	7	8	8	
	SSE	S	S	S	S	S	SSW	S	SSW	SSW	SSW	SW	WSW	W	N	W	WNW	WNW	NW	NW	NW	E	SE	SSE	
37/38	5	7	8	9	9	9	8	8	7	7	6	6	5	5	5	5	5	4	4	4	3	3	3	4	
	9	11	12	13	13	12	12	11	10	9	8	8	8	8	7	7	7	6	6	6	6	7	7	8	
	SSE	S	S	S	S	S	SSW	SSW	SSW	SSW	SSW	SW	WSW	W	N	W	WNW	WNW	NW	NW	NW	E	SE	SSE	
25/26	5	7	7	8	9	8	8	7	7	6	6	5	5	5	5	5	5	4	4	4	4	4	3	4	
	9	11	12	12	13	12	11	11	10	9	8	8	8	8	7	7	7	6	6	6	6	6	7	7	7
	SSE	S	S	S	S	S	SSW	S	SSW	SSW	SSW	SSW	WSW	W	NNW	W	WNW	WNW	NW	NW	NW	NE	SE	SSE	
11/12	5	7	7	8	8	7	7	6	5	5	5	5	5	4	4	4	4	4	4	4	4	4	4	5	
	9	11	11	12	13	11	11	10	9	8	8	8	7	7	7	7	7	6	6	6	6	7	7	8	
	S	S	S	S	S	SSW	SSW	SSW	SSW	SSW	SSW	SSW	SW	W	NNE	W	WNW	WNW	NW	NW	NW	SSE	ESE	SE	
1 & 2 Bravo	5	6	7	7	8	8	7	7	7	7	6	6	6	6	5	5	5	5	5	4	4	3	3	4	
	8	9	11	11	13	11	11	11	10	9	9	8	8	8	7	7	7	7	7	7	6	6	7	6	7
	S	S	S	S	S	S	SSW	SSW	SSW	SSW	S	SSW	SSW	WSW	N	W	WNW	NW	NW	NW	NW	N	SE	SSE	

NOTE: This is automated data that may/may not agree with the official BAM thinking that's found on the daily slides. This data should be used as a guide only.



# Houston Pilots: Fri. 7/5/2024



## Forecast Discussion

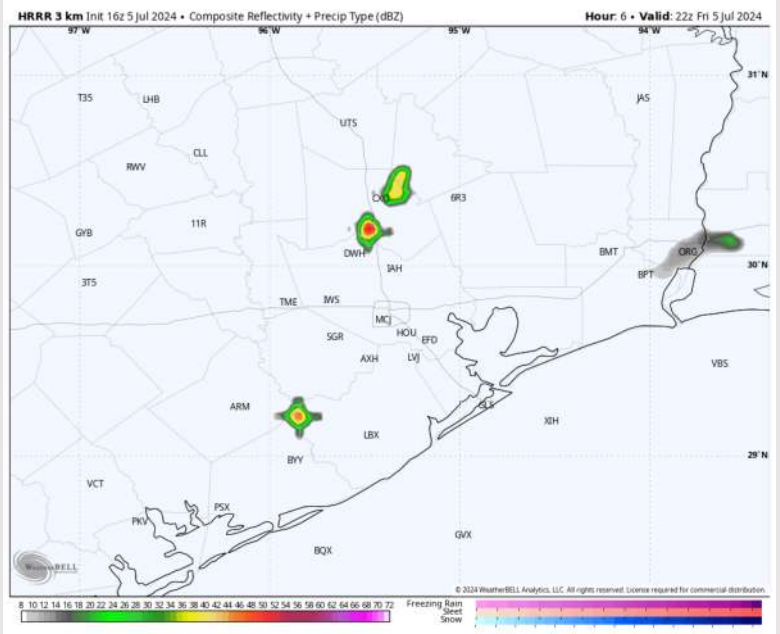
**Precip:** A few isolated (10%) showers and storms will linger around the area through 7 PM. Then anticipating dry conditions for the rest of the evening.

**Wind:** Winds will be out of the S/SW for the rest of the PM. **N of Morgan's Point:** Calm winds will increase to 5 - 10 kts after 5 PM. **S of Morgan's Point:** Winds at 3-8 kts will increase to 13 - 18 kts after 5 PM. Gusts could potentially reach 20 kts this PM.

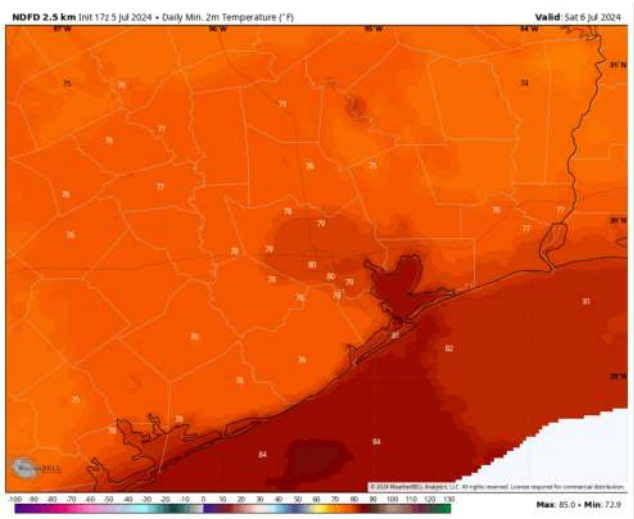
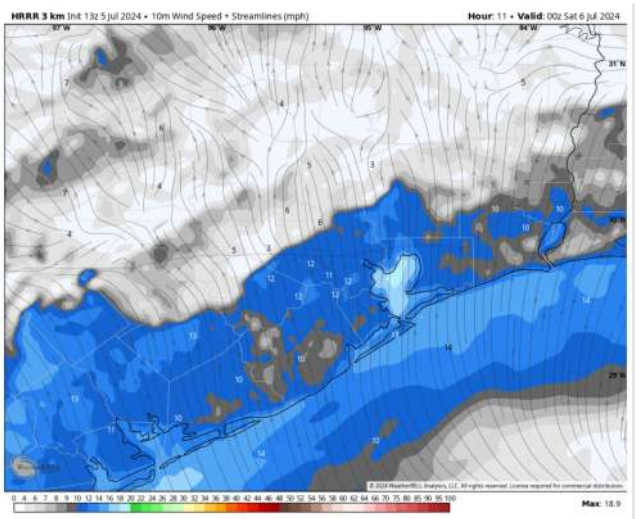
**Low Temps:** **N of Morgan's Point:** Upper 70s F / Near 80 F. **S of Morgan's Point:** Low to Mid 80s F.

**Visibility:** Not anticipating any fog concerns for this PM.

## Precip Image: 5 PM CT



Wind Speed:  
7 PM CT



Low Temps  
Sat AM

# Houston Pilots: Sat. 7/6/2024



## Forecast Discussion

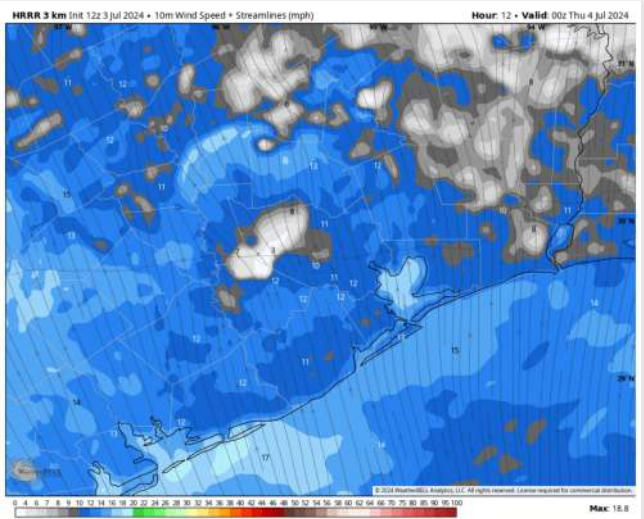
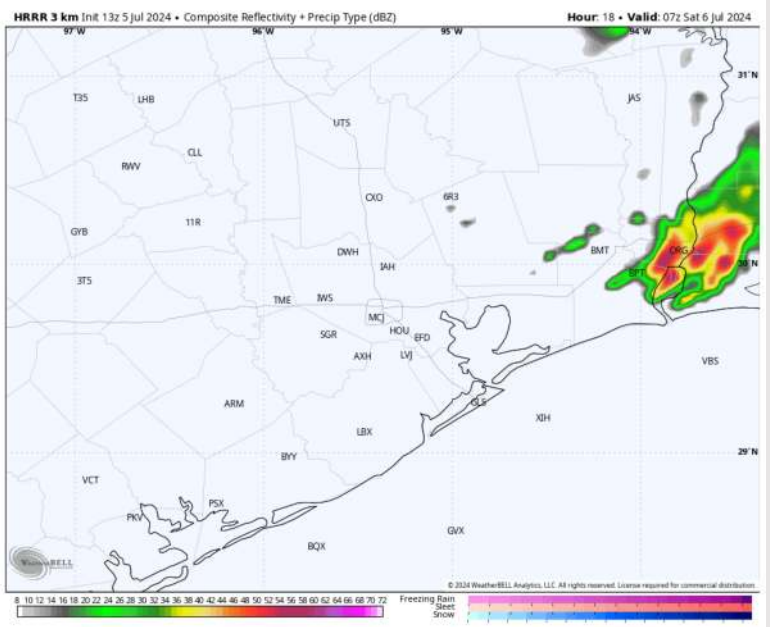
**Precip:** A few isolated shower chances will be possible in the AM Saturday. After ~12 PM more widespread shower and storm chances will push in across stations N of Morgan's Point and will continue throughout the day.

**Wind:** Winds will remain fairly variable throughout the day SAT. **N of Morgan's Point:** Winds at 3-8 kts throughout the day. **S of Morgan's Point:** Winds at 6-11 kts throughout the day.

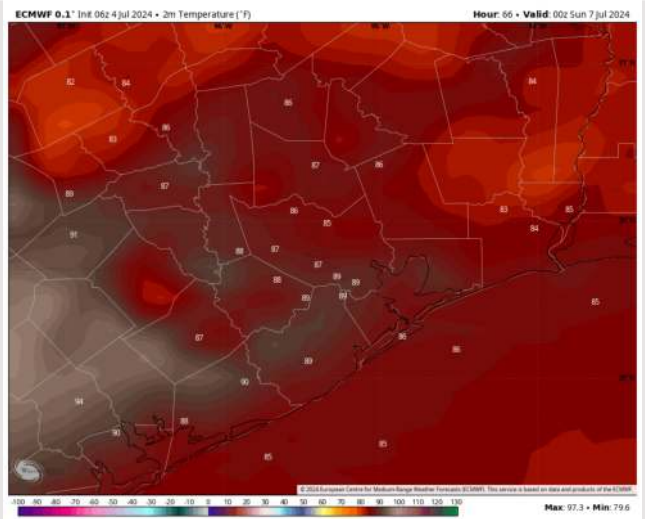
**High Temps:** **N of Morgan's Point:** Upper 80s F. **S of Morgan's Point:** Mid 80s F.

**Visibility:** Not anticipating any fog concerns for Saturday.

## Precip Image: 2 AM CT



Wind Speed:  
7 PM CT



High Temps  
Saturday



# Houston Pilots: Sun. 7/7/2024



## Forecast Discussion

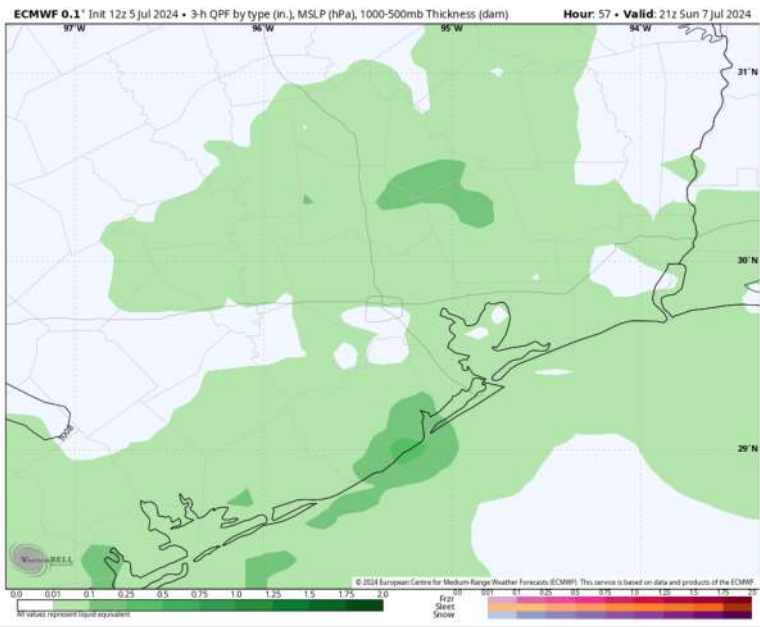
**Precip:** Scattered showers and storms will be around through the day with the best chances being through the afternoon.

**Wind:** Winds will be out ESE throughout the day. **N of Morgan's Point:** Winds at 3 – 8 kts through the AM, increasing to 8– 13 kts after 12 PM. **S of Morgan's Point:** Favoring winds at 8 – 13 kts, then winds increase to 18 – 23 kts after noon.

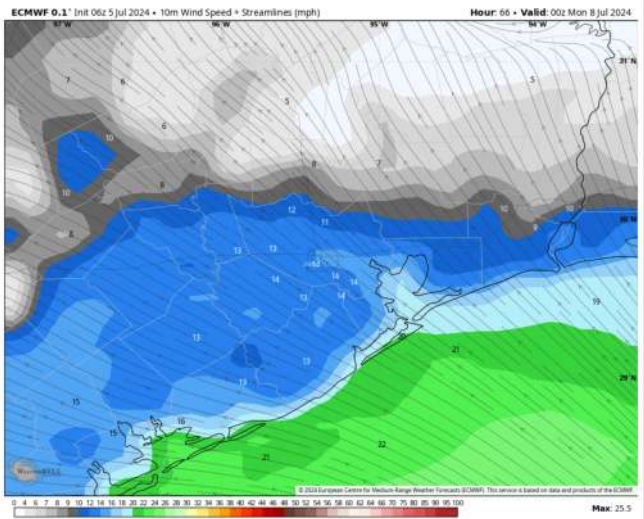
**High Temps:** **N of Morgan's Point:** Upper 90s F. **S of Morgan's Point:** Upper 80s F.

**Visibility:** Not favoring any fog concerns Sunday.

Precip Image: 4 PM CT



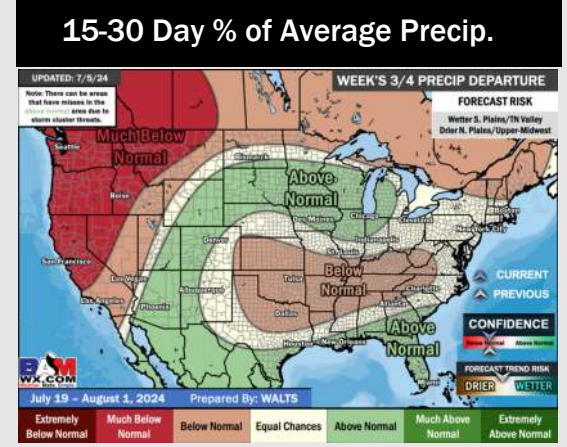
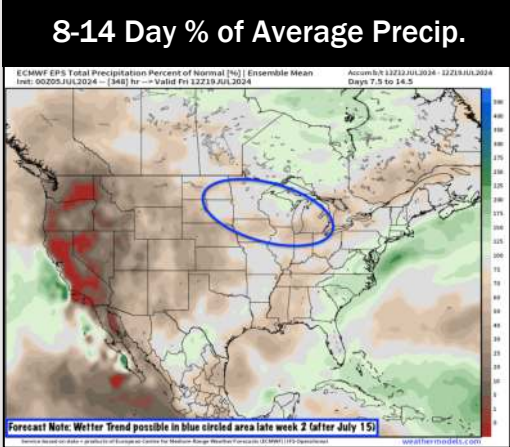
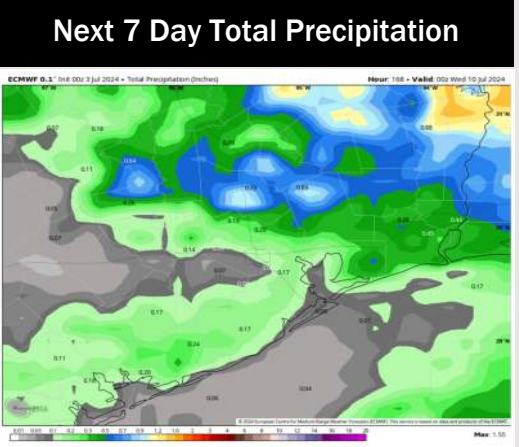
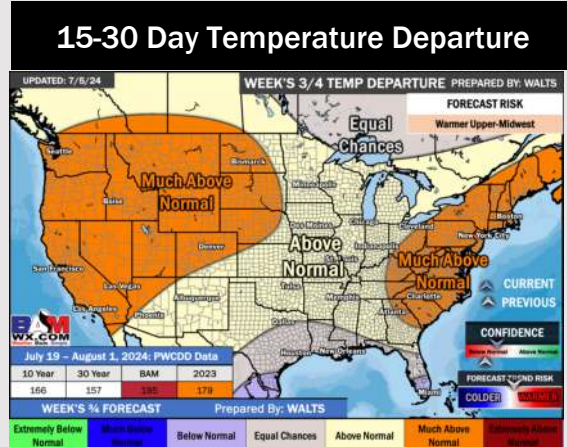
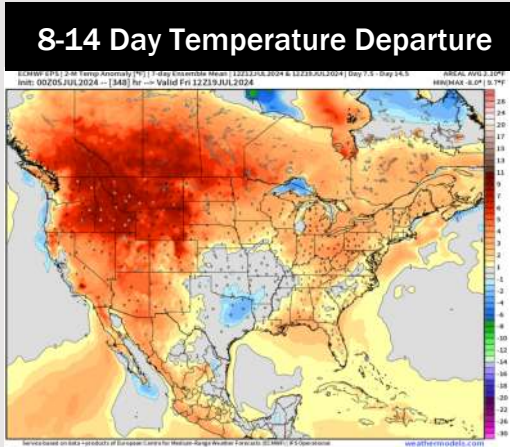
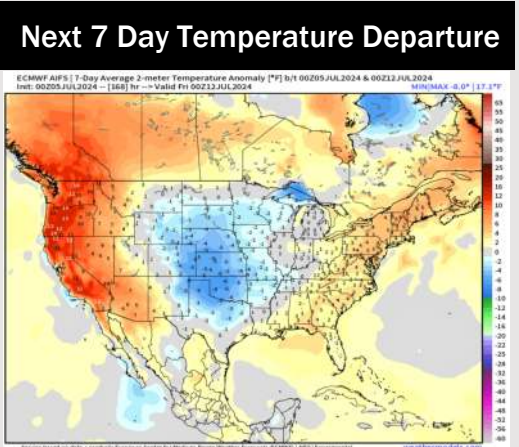
Wind Speed  
7 PM CT



High Temps  
Sunday



# Houston Pilots: 7/5/24



- Temps are expected to be above normal for the week 1 timeframe. Scattered shower/storm risks are favored throughout the second half of week 2 due to remnants of Hurricane Beryl.
- Models are favoring slightly below normal precipitation for the week 2 timeframe. Slightly above / near normal temperatures are favored for week 2.
- Above normal chances for precipitation and near normal temperatures are favored in the weeks 3/4 timeframe.