

Houston Pilots Forecast Package

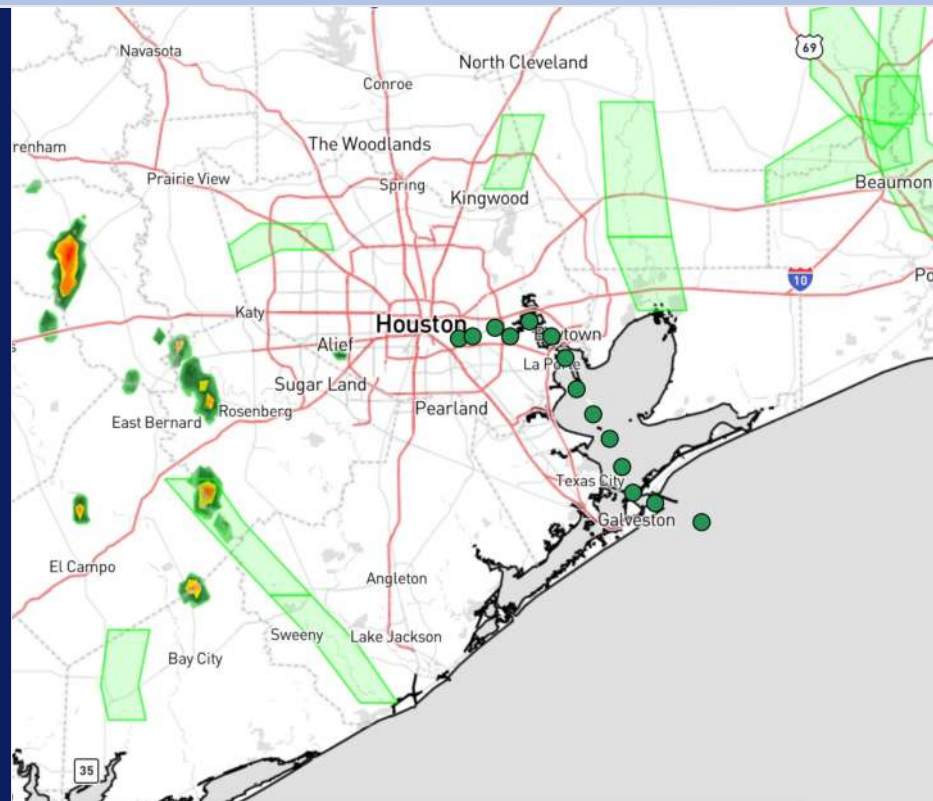


Updated: 12:35 PM CT
Monday, July 29, 2024

Forecaster: Hope Kleitsch

Weather Headlines

- Isolated showers and storms are possible today and tomorrow.
- **A few stronger gusts embedded within storms of 20kts + will be in play this afternoon.**
- Not anticipating any fog concerns the next few days. Low visibilities are likely in heavy downpours.



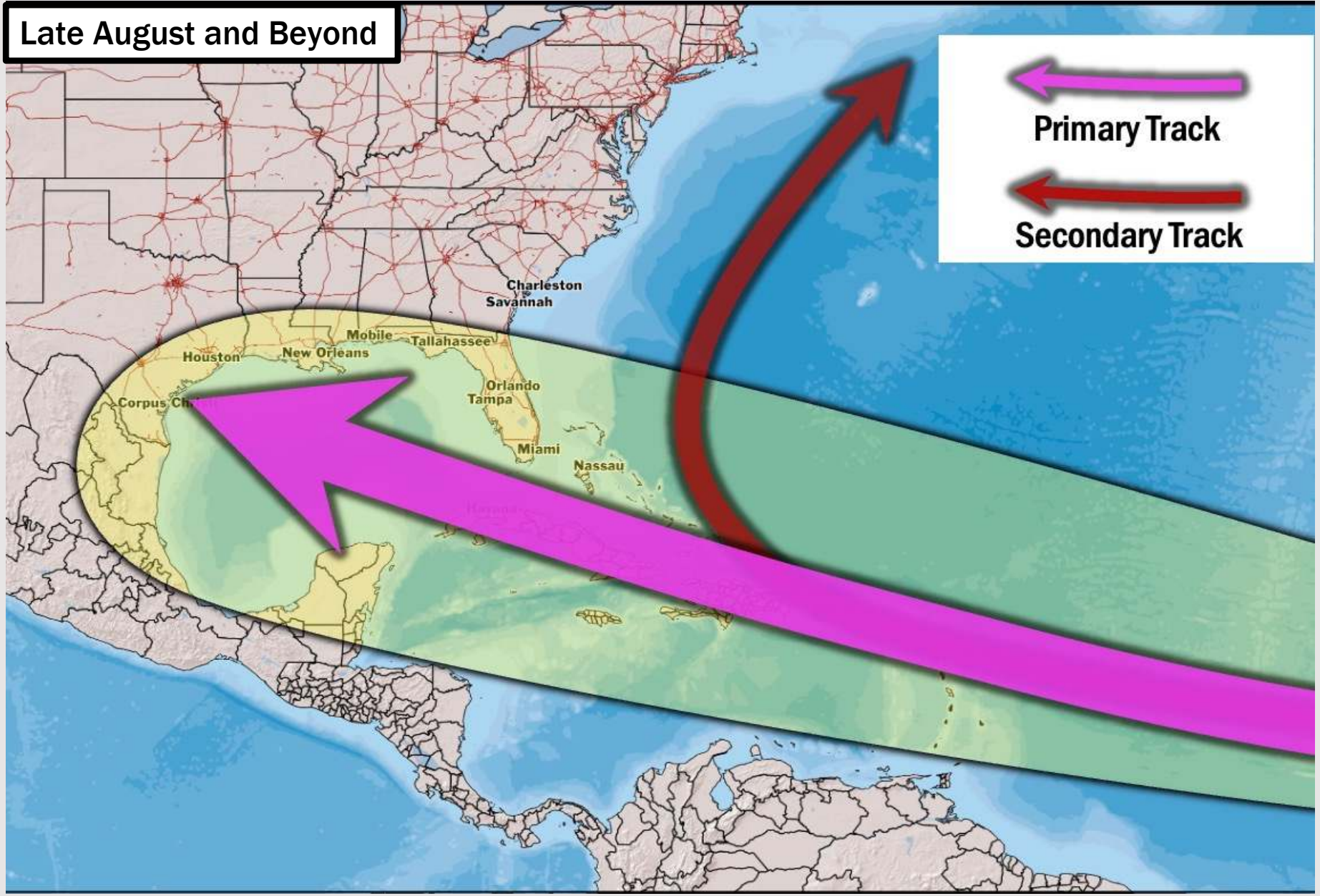
Current Radar: 12:35 PM CT



As always, please do not hesitate to reach out to us with any forecast questions via the chat option on Clarity or our on-call number, **(317)-560-8122** press **1** for forecast questions.

Houston Pilots Tropical Update

Late August and Beyond

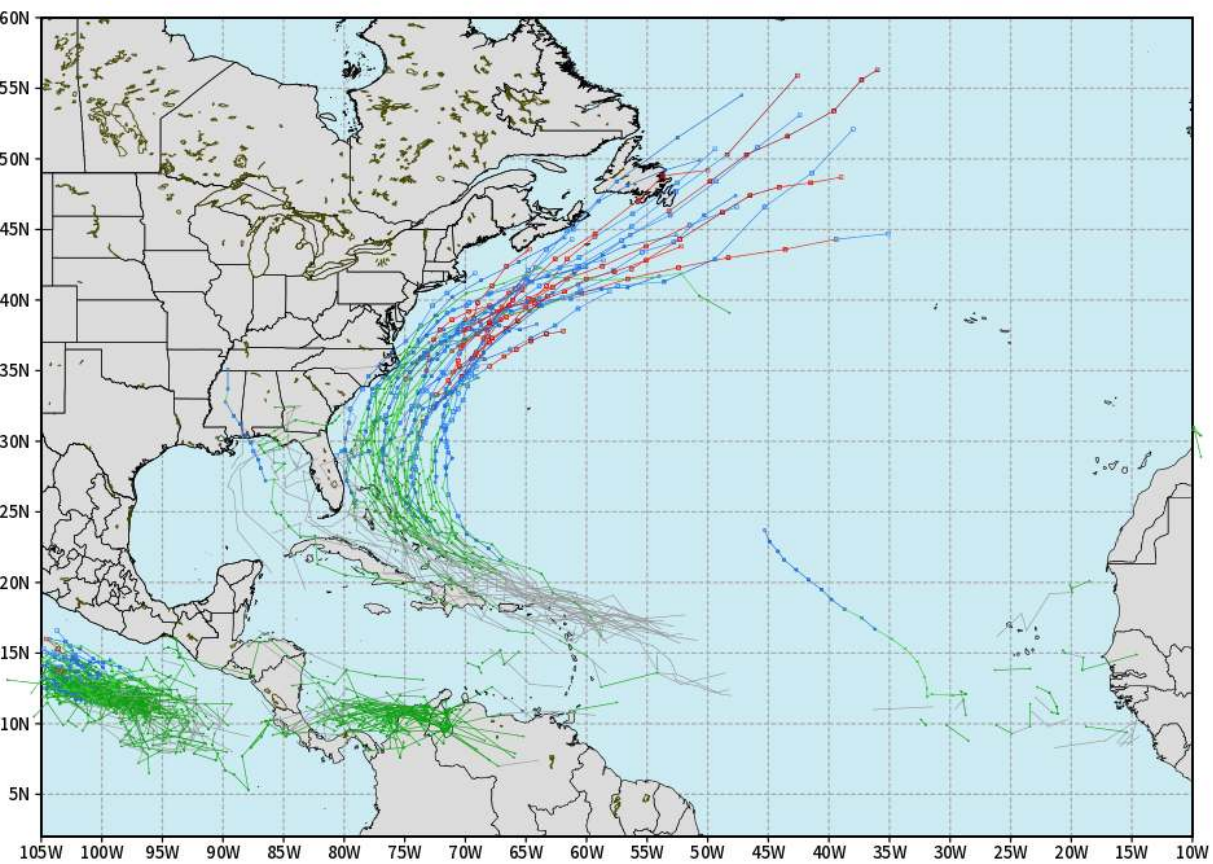


Houston Pilots Tropical Update

European Model Next 10 Days - Tropical Tracks

ECMWF ATLANTIC EPS Cyclone Locations --> Next [10-days]
INIT: 00Z29JUL2024 --> UNTIL 00Z08AUG2024

o-o ENSEMBLE MEAN
o-o 1000 - 1010 hPa
o-o 980 - 999 hPa
o-o 960 - 979 hPa
o-o 950 - 959 hPa
o-o < 950 hPa



weathermodels.com

Not in favor of any tropical threats over the next 10 days to the HOU area.

Early signals are starting to show for possible development in the Tropical Atlantic next week. No threat is currently anticipated for the HOU area with this possible system.

Houston Pilots Visibility Chart (miles)



Forecast Confidence



| Visibility | Mon 2 pm | Mon 3 pm | Mon 4 pm | Mon 5 pm | Mon 6 pm | Mon 7 pm | Mon 8 pm | Mon 9 pm | Mon 10 pm | Mon 11 pm | Tue 12 am | Tue 1 am | Tue 2 am | Tue 3 am | Tue 4 am | Tue 5 am | Tue 6 am | Tue 7 am | Tue 8 am | Tue 9 am | Tue 10 am | Tue 11 am | Tue 12 pm | Tue 1 pm |
|--------------------------------------|----------|----------|----------|----------|----------|----------|----------|----------|-----------|-----------|-----------|----------|----------|----------|----------|----------|----------|----------|----------|----------|-----------|-----------|-----------|----------|
| Houston Pilots N - 610 Bridge | 10.1 | 10.1 | 10.1 | 10.1 | 10.1 | 10.1 | 10.1 | 10.1 | 10.1 | 10.1 | 10.1 | 10.1 | 10.1 | 10.1 | 10.1 | 10.1 | 10.1 | 10.1 | 9 | 10.1 | 10.1 | 10.1 | 10.1 | 10.1 |
| Houston Pilots M - Kinder 1 | 10.1 | 10.1 | 10.1 | 10.1 | 10.1 | 10.1 | 10.1 | 10.1 | 10.1 | 10.1 | 10.1 | 10.1 | 10.1 | 10.1 | 10.1 | 10.1 | 10.1 | 10.1 | 10.1 | 9 | 10.1 | 10.1 | 10.1 | 10.1 |
| Houston Pilots L - Greens Bayou | 10.1 | 10.1 | 10.1 | 10.1 | 10.1 | 10.1 | 10.1 | 10.1 | 10.1 | 10.1 | 10.1 | 10.1 | 10.1 | 10.1 | 10.1 | 10.1 | 10.1 | 10.1 | 10.1 | 9 | 10.1 | 10.1 | 10.1 | 10.1 |
| Houston Pilots K - Shell Crude | 10.1 | 10.1 | 10.1 | 10.1 | 10.1 | 10.1 | 10.1 | 10.1 | 10.1 | 10.1 | 10.1 | 10.1 | 10.1 | 10.1 | 10.1 | 10.1 | 10.1 | 10.1 | 10.1 | 9 | 10.1 | 10.1 | 10.1 | 10.1 |
| Houston Pilots J - Lynchburg Ferries | 10.1 | 10.1 | 10.1 | 10.1 | 10.1 | 10.1 | 10.1 | 10.1 | 10.1 | 10.1 | 10.1 | 10.1 | 10.1 | 10.1 | 10.1 | 10.1 | 10.1 | 10.1 | 10.1 | 9 | 10.1 | 10.1 | 10.1 | 10.1 |
| Houston Pilots I - Exxon 3 | 10.1 | 10.1 | 10.1 | 10.1 | 10.1 | 10.1 | 10.1 | 10.1 | 10.1 | 10.1 | 10.1 | 10.1 | 10.1 | 10.1 | 10.1 | 10.1 | 10.1 | 10.1 | 10.1 | 9 | 10.1 | 10.1 | 10.1 | 10.1 |
| Houston Pilots H - Morgans Point | 10.1 | 10.1 | 10.1 | 10.1 | 10.1 | 10.1 | 10.1 | 10.1 | 10.1 | 10.1 | 10.1 | 10.1 | 10.1 | 10.1 | 10.1 | 10.1 | 10.1 | 10.1 | 10.1 | 9 | 10.1 | 10.1 | 10.1 | 10.1 |
| Houston Pilots G - 75/76 | 10.1 | 10.1 | 10.1 | 10.1 | 10.1 | 10.1 | 10.1 | 10.1 | 10.1 | 10.1 | 10.1 | 10.1 | 10.1 | 10.1 | 10.1 | 10.1 | 10.1 | 10.1 | 10.1 | 10.1 | 10.1 | 10.1 | 12 | 12 |
| Houston Pilots F - 63/64 | 10.1 | 10.1 | 10.1 | 10.1 | 10.1 | 10.1 | 10.1 | 10.1 | 10.1 | 10.1 | 10.1 | 10.1 | 10.1 | 10.1 | 10.1 | 10.1 | 10.1 | 10.1 | 10.1 | 10.1 | 10.1 | 10.1 | 12 | 12 |
| Houston Pilots E - 51/52 | 10.1 | 10.1 | 10.1 | 10.1 | 10.1 | 10.1 | 10.1 | 10.1 | 10.1 | 10.1 | 10.1 | 10.1 | 10.1 | 10.1 | 10.1 | 10.1 | 10.1 | 10.1 | 10.1 | 10.1 | 10.1 | 10.1 | 12 | 12 |
| Houston Pilots D - 37/38 | 10.1 | 10.1 | 10.1 | 10.1 | 10.1 | 10.1 | 10.1 | 10.1 | 10.1 | 10.1 | 10.1 | 10.1 | 10.1 | 10.1 | 10.1 | 10.1 | 10.1 | 10.1 | 10.1 | 10.1 | 10.1 | 10.1 | 12 | 12 |
| Houston Pilots C - 25/26 | 10.1 | 10.1 | 10.1 | 10.1 | 10.1 | 10.1 | 10.1 | 10.1 | 10.1 | 10.1 | 10.1 | 10.1 | 10.1 | 10.1 | 10.1 | 10.1 | 10.1 | 10.1 | 10.1 | 10.1 | 10.1 | 10.1 | 12 | 12 |
| Houston Pilots B - 11/12 | 10.1 | 10.1 | 10.1 | 10.1 | 10.1 | 10.1 | 10.1 | 10.1 | 10.1 | 10.1 | 10.1 | 10.1 | 10.1 | 10.1 | 10.1 | 10.1 | 10.1 | 10.1 | 10.1 | 10.1 | 10.1 | 10.1 | 12 | 9 |
| Houston Pilots A - 1 & 2 Bravo | 10.1 | 10.1 | 10.1 | 10.1 | 10.1 | 10.1 | 10.1 | 10.1 | 10.1 | 10.1 | 10.1 | 10.1 | 10.1 | 10.1 | 10.1 | 10.1 | 10.1 | 10.1 | 9 | 7.9 | 10.1 | 10.1 | 9 | 9 |

NOTE: This is automated data that may/may not agree with the official BAM thinking that's found on the daily slides or special visibility report slides. This data should be used as a guide only

Houston Pilots Wind Chart



Forecast Confidence



Example



| Wind | Mon 2 pm | Mon 3 pm | Mon 4 pm | Mon 5 pm | Mon 6 pm | Mon 7 pm | Mon 8 pm | Mon 9 pm | Mon 10 pm | Mon 11 pm | Tue 12 am | Tue 1 am | Tue 2 am | Tue 3 am | Tue 4 am | Tue 5 am | Tue 6 am | Tue 7 am | Tue 8 am | Tue 9 am | Tue 10 am | Tue 11 am | Tue 12 pm | Tue 1 pm |
|--------------------------------------|---------------|---------------|---------------|---------------|---------------|---------------|---------------|---------------|---------------|---------------|---------------|---------------|---------------|---------------|---------------|---------------|---------------|---------------|---------------|---------------|---------------|---------------|---------------|---------------|
| Houston Pilots N - 610 Bridge | 8 16 ↑ | 9 17 ↑ | 9 18 ↑ | 9 18 ↑ | 8 17 ↑ | 8 17 ↑ | 8 15 ↑ | 8 15 ↑ | 7 14 ↑ | 6 13 ↑ | 6 13 ↑ | 6 13 ↑ | 5 12 ↑ | 5 10 ↑ | 3 10 ↑ | 3 9 ↑ | 3 8 ↑ | 3 8 ↑ | 3 9 ↑ | 5 10 ↑ | 6 13 ↑ | 7 14 ↑ | 8 15 ↑ | |
| Houston Pilots M - Kinder 1 | 8 16 ↑ | 9 17 ↑ | 9 18 ↑ | 9 18 ↑ | 8 17 ↑ | 8 17 ↑ | 8 15 ↑ | 8 15 ↑ | 7 14 ↑ | 6 13 ↑ | 6 13 ↑ | 6 12 ↑ | 5 12 ↑ | 5 10 ↑ | 3 10 ↑ | 3 9 ↑ | 3 8 ↑ | 3 8 ↑ | 3 9 ↑ | 5 10 ↑ | 6 13 ↑ | 7 14 ↑ | 8 15 ↑ | |
| Houston Pilots L - Greens Bayou | 8 16 ↑ | 9 16 ↑ | 9 17 ↑ | 9 18 ↑ | 8 17 ↑ | 8 17 ↑ | 8 15 ↑ | 7 15 ↑ | 6 14 ↑ | 6 13 ↑ | 6 12 ↑ | 5 12 ↑ | 5 10 ↑ | 3 10 ↑ | 3 9 ↑ | 3 8 ↑ | 3 8 ↑ | 3 8 ↑ | 3 9 ↑ | 5 10 ↑ | 6 13 ↑ | 7 14 ↑ | 8 15 ↑ | |
| Houston Pilots K - Shell Crude | 8 16 ↑ | 9 16 ↑ | 9 17 ↑ | 9 17 ↑ | 8 17 ↑ | 8 17 ↑ | 8 15 ↑ | 7 15 ↑ | 6 14 ↑ | 6 13 ↑ | 6 12 ↑ | 5 12 ↑ | 5 10 ↑ | 5 10 ↑ | 3 9 ↑ | 3 8 ↑ | 3 8 ↑ | 3 8 ↑ | 3 9 ↑ | 5 10 ↑ | 6 13 ↑ | 7 14 ↑ | 8 15 ↑ | |
| Houston Pilots J - Lynchburg Ferries | 8 16 ↑ | 9 16 ↑ | 9 17 ↑ | 9 18 ↑ | 9 17 ↑ | 8 17 ↑ | 8 16 ↑ | 7 15 ↑ | 6 14 ↑ | 6 13 ↑ | 6 12 ↑ | 5 12 ↑ | 5 10 ↑ | 3 10 ↑ | 3 9 ↑ | 3 8 ↑ | 3 8 ↑ | 3 8 ↑ | 3 9 ↑ | 5 10 ↑ | 6 13 ↑ | 7 14 ↑ | 8 15 ↑ | |
| Houston Pilots I - Exxon 3 | 10 17 ↑ | 12 18 ↑ | 12 20 ↑ | 13 20 ↑ | 13 18 ↑ | 13 18 ↑ | 13 17 ↑ | 12 17 ↑ | 10 16 ↑ | 10 16 ↑ | 10 15 ↑ | 10 15 ↑ | 9 15 ↑ | 9 14 ↑ | 8 14 ↑ | 8 13 ↑ | 8 12 ↑ | 7 12 ↑ | 7 10 ↑ | 7 12 ↑ | 8 13 ↑ | 8 14 ↑ | 8 15 ↑ | 10 16 ↑ |
| Houston Pilots H - Morgans Point | 10 17 ↑ | 12 18 ↑ | 12 20 ↑ | 13 20 ↑ | 13 18 ↑ | 13 17 ↑ | 12 17 ↑ | 12 16 ↑ | 10 16 ↑ | 10 16 ↑ | 10 15 ↑ | 10 15 ↑ | 9 15 ↑ | 9 14 ↑ | 8 14 ↑ | 8 13 ↑ | 8 12 ↑ | 7 12 ↑ | 7 12 ↑ | 8 13 ↑ | 8 14 ↑ | 8 15 ↑ | 8 16 ↑ | 10 16 ↑ |
| Houston Pilots G - 75/76 | 10 17 ↑ | 12 18 ↑ | 12 20 ↑ | 13 20 ↑ | 13 18 ↑ | 13 18 ↑ | 13 17 ↑ | 12 17 ↑ | 12 17 ↑ | 12 17 ↑ | 12 16 ↑ | 12 16 ↑ | 12 16 ↑ | 10 15 ↑ | 10 15 ↑ | 10 15 ↑ | 9 14 ↑ | 8 14 ↑ | 8 14 ↑ | 9 15 ↑ | 9 16 ↑ | 9 16 ↑ | 10 17 ↑ | |
| Houston Pilots F - 63/64 | 10 17 ↑ | 12 18 ↑ | 12 18 ↑ | 12 20 ↑ | 12 18 ↑ | 12 17 ↑ | 12 17 ↑ | 12 17 ↑ | 12 17 ↑ | 12 17 ↑ | 12 17 ↑ | 12 16 ↑ | 12 17 ↑ | 12 16 ↑ | 10 16 ↑ | 10 15 ↑ | 10 15 ↑ | 9 14 ↑ | 9 14 ↑ | 9 14 ↑ | 9 15 ↑ | 9 16 ↑ | 9 16 ↑ | 10 17 ↑ |
| Houston Pilots E - 51/52 | 10 16 ↑ | 10 17 ↑ | 12 18 ↑ | 12 18 ↑ | 12 17 ↑ | 12 17 ↑ | 12 16 ↑ | 12 17 ↑ | 12 17 ↑ | 12 17 ↑ | 12 17 ↑ | 12 17 ↑ | 12 17 ↑ | 12 16 ↑ | 12 16 ↑ | 12 15 ↑ | 10 15 ↑ | 10 15 ↑ | 9 15 ↑ | 9 15 ↑ | 9 15 ↑ | 9 16 ↑ | 9 16 ↑ | 10 17 ↑ |
| Houston Pilots D - 37/38 | 10 16 ↑ | 10 16 ↑ | 10 17 ↑ | 12 17 ↑ | 10 17 ↑ | 10 17 ↑ | 10 16 ↑ | 10 16 ↑ | 12 17 ↑ | 12 17 ↑ | 12 17 ↑ | 12 17 ↑ | 13 17 ↑ | 12 17 ↑ | 12 17 ↑ | 12 16 ↑ | 10 16 ↑ | 10 16 ↑ | 9 15 ↑ | 9 15 ↑ | 9 15 ↑ | 10 16 ↑ | 10 16 ↑ | 10 16 ↑ |
| Houston Pilots C - 25/26 | 10 16 ↑ | 10 16 ↑ | 10 16 ↑ | 10 17 ↑ | 10 16 ↑ | 10 16 ↑ | 10 16 ↑ | 10 16 ↑ | 10 16 ↑ | 10 17 ↑ | 10 17 ↑ | 12 17 ↑ | 12 17 ↑ | 12 17 ↑ | 10 16 ↑ | 10 16 ↑ | 10 16 ↑ | 10 15 ↑ | 9 15 ↑ | 9 15 ↑ | 9 15 ↑ | 10 16 ↑ | 10 16 ↑ | 10 16 ↑ |
| Houston Pilots B - 11/12 | 9 15 ↑ | 9 15 ↑ | 9 16 ↑ | 10 16 ↑ | 10 15 ↑ | 10 16 ↑ | 9 15 ↑ | 9 15 ↑ | 10 16 ↑ | 10 16 ↑ | 10 16 ↑ | 10 16 ↑ | 10 16 ↑ | 10 16 ↑ | 10 16 ↑ | 10 16 ↑ | 9 15 ↑ | 9 15 ↑ | 8 15 ↑ | 8 15 ↑ | 9 15 ↑ | 9 16 ↑ | 9 16 ↑ | 10 16 ↑ |
| Houston Pilots A - 1 & 2 Bravo | 9 15 ↑ | 9 15 ↑ | 9 15 ↑ | 9 15 ↑ | 10 15 ↑ | 10 16 ↑ | 10 15 ↑ | 10 16 ↑ | 10 17 ↑ | 10 17 ↑ | 12 17 ↑ | 12 17 ↑ | 13 18 ↑ | 13 18 ↑ | 13 18 ↑ | 13 18 ↑ | 12 17 ↑ | 12 16 ↑ | 10 16 ↑ | 10 16 ↑ | 10 16 ↑ | 10 16 ↑ | 10 16 ↑ | 10 16 ↑ |

NOTE: This is automated data that may/may not agree with the official BAM thinking that's found on the daily slides. This data should be used as a guide only.

Houston Pilots: MON. 7/29/2024



Forecast Discussion

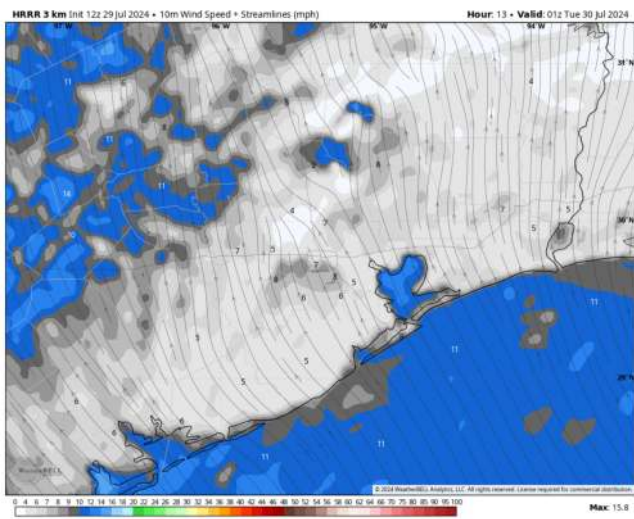
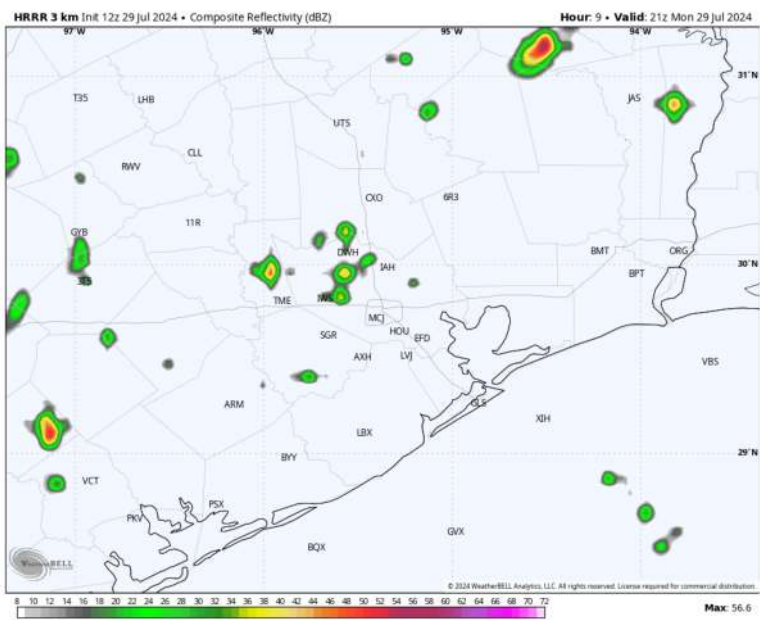
Precip: Isolated showers and storms are possible through 7 PM. Most showers/storms will stay N. of Morgan's Point. Dry conditions are favored through the remainder of the night.

Wind: Winds will be out of the S/SE throughout the day. **N of Morgan's Point:** Winds at 4 – 9 kts throughout rest of the day. **S of Morgan's Point:** Winds at 9 – 15 kts throughout the day. Localized non-thunderstorm-related wind gusts of 20kts will be possible for all stations throughout the day.

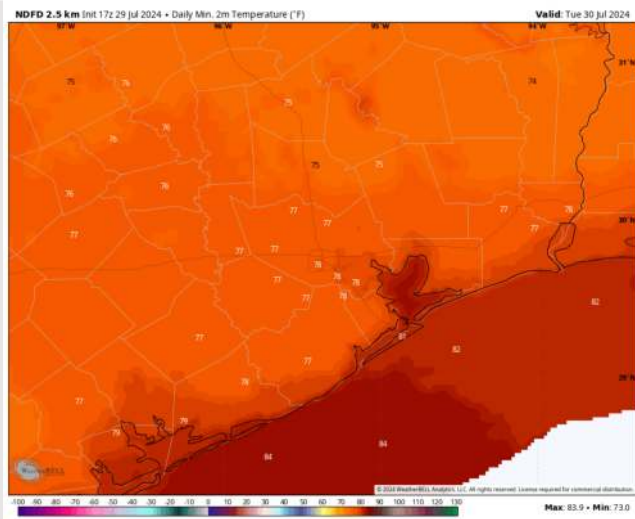
Low Temps: **N of Morgan's Point:** Upper 70s F. **S of Morgan's Point:** Near 80 F.

Visibility: Fog is not favored for today; however, visibility can be reduced under heavy downpours!

Precip Image: 4 PM CT



Wind Speed:
8 PM CT



Low Temps
TUE AM

Houston Pilots: TUE. 7/30/2024



Forecast Discussion

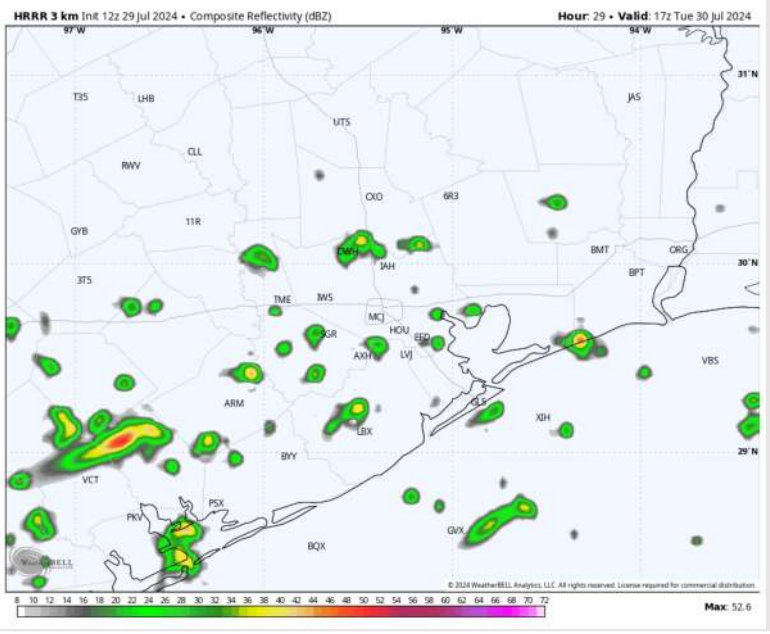
Precip: Isolated (10%) rain showers and thunderstorms are possible from 10 AM – 5 PM. Dry conditions are then favored for the rest of the evening.

Wind: Winds will be generally out of the S/SW throughout Tuesday. **N of Morgan's Point:** Winds at 4 – 8 kts through 2 PM before increasing to 9 – 13 kts through the remainder of the day. **S of Morgan's Point:** Winds at 11 – 17 kts through the day.

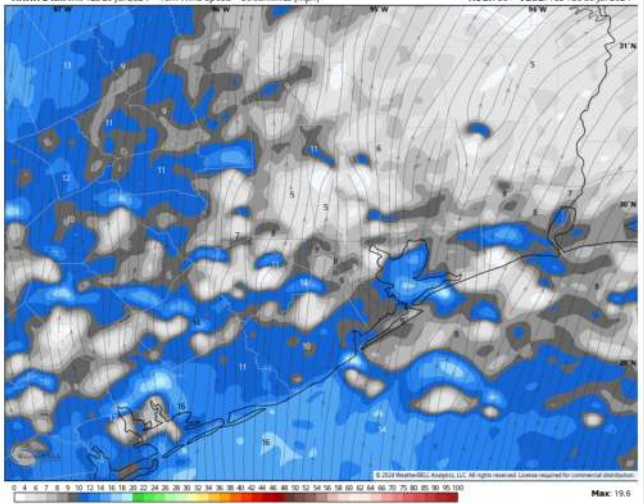
High Temps: **N of Morgan's Point:** Mid 90s F. **S of Morgan's Point:** Upper 80s F to lower 90s F.

Visibility: Not anticipating any fog concerns for Tuesday.

Precip Image: 12 PM CT

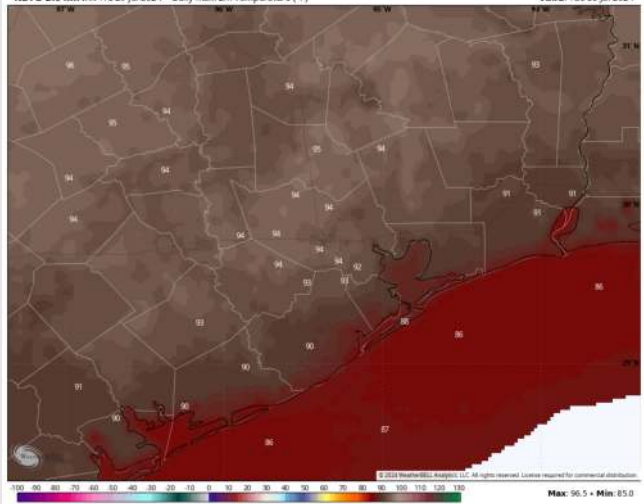


HRRR 3 km Init 12z 29 Jul 2024 • 10m Wind Speed + Streamlines (mph) Hour: 30 • Valid: 18z Tue 30 Jul 2024



Wind Speed
1 PM CT

NDFD 2.5 km Init 17z 29 Jul 2024 • Daily Max. 2m Temperature (°F) Valid: Tue 30 Jul 2024



High Temps
Tuesday

Houston Pilots: WED. 7/31/2024



Forecast Discussion

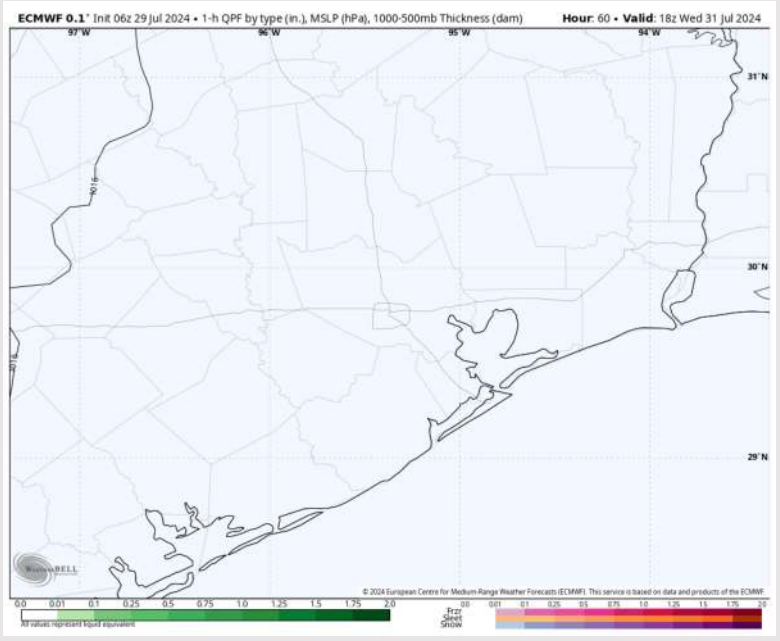
Precip: Favoring dry conditions for Wednesday.

Wind: Winds favored to be out of the S/SW through Wednesday. **N of Morgan's Point:** Winds will be at 4-9 kts throughout the day Wednesday. **S of Morgan's Point:** Winds begin the day at 10-15 kts and are expected to decrease to 7-12 kts by 6 AM.

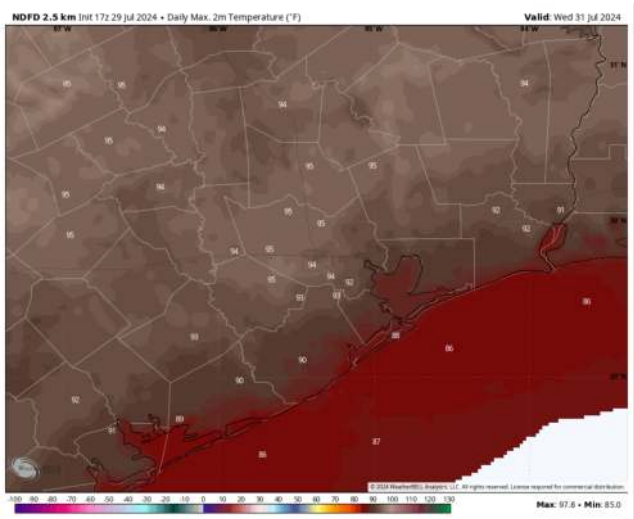
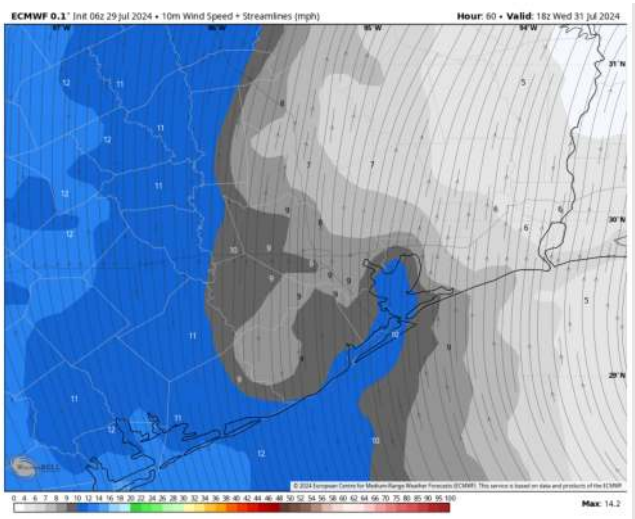
High Temps: **N of Morgan's Point:** Mid 90s F. **S of Morgan's Point:** High 80s F.

Visibility: No visibility concerns for Wednesday.

Precip Image: 1 PM CT

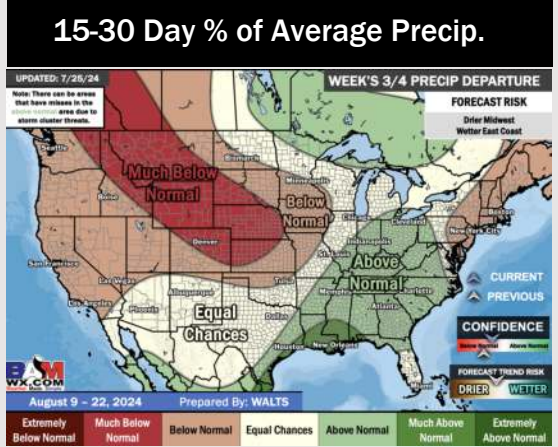
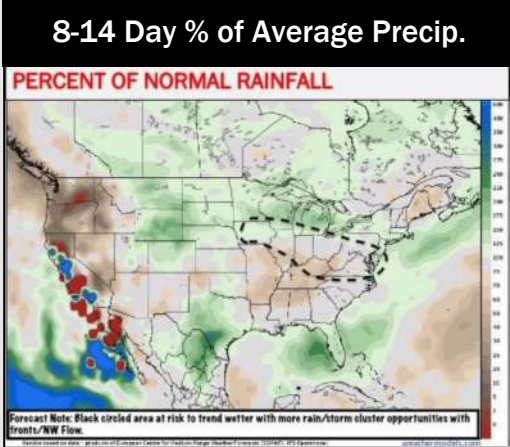
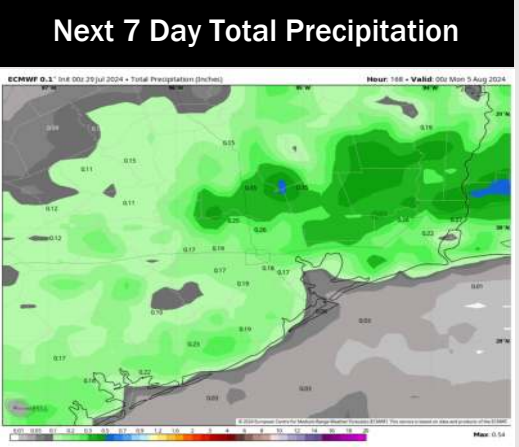
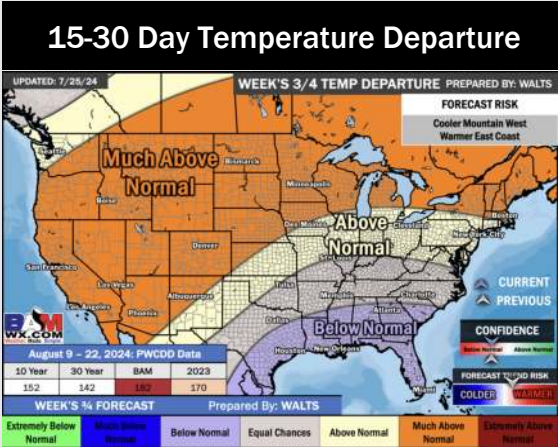
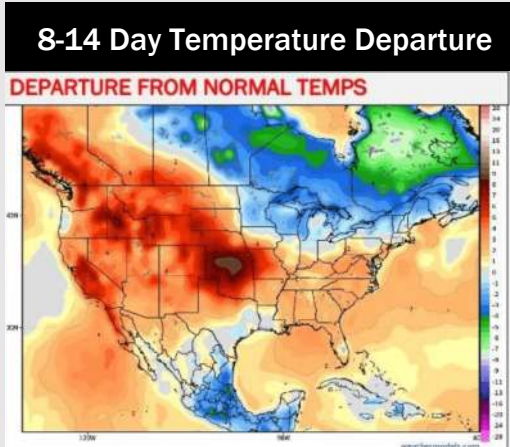


Wind Speed:
1 PM CT



High Temps
Wednesday

Houston Pilots: 7/29/24



- Temps are expected to be slightly below normal for the week 1 timeframe. Expecting a generally drier week 1, with only minor precip chances at times through the week
- Seasonable temperatures and slightly above normal precipitation chances are favored for the week 2 timeframe.
- Above normal chances for precipitation and below normal temperatures are favored in the weeks 3/4 timeframe.