

# Houston Pilots Forecast Package

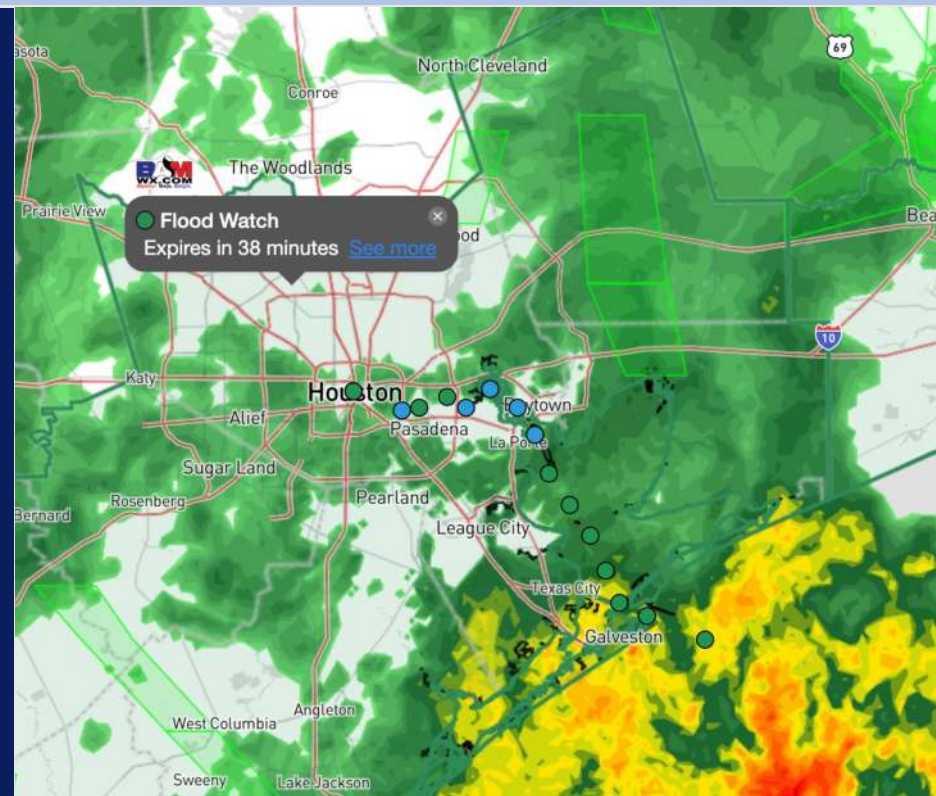


Updated: 1:00 PM CT  
Saturday, July 27, 2024

Forecaster: Adam Feick

## Weather Headlines

- Scattered to Widespread downpours/storms favored through the weekend!
- **A few stronger gusts embedded within storms of 25kts + will be in play.**
- Not anticipating any fog concerns the next few days. Low visibilities are likely in heavy downpours.



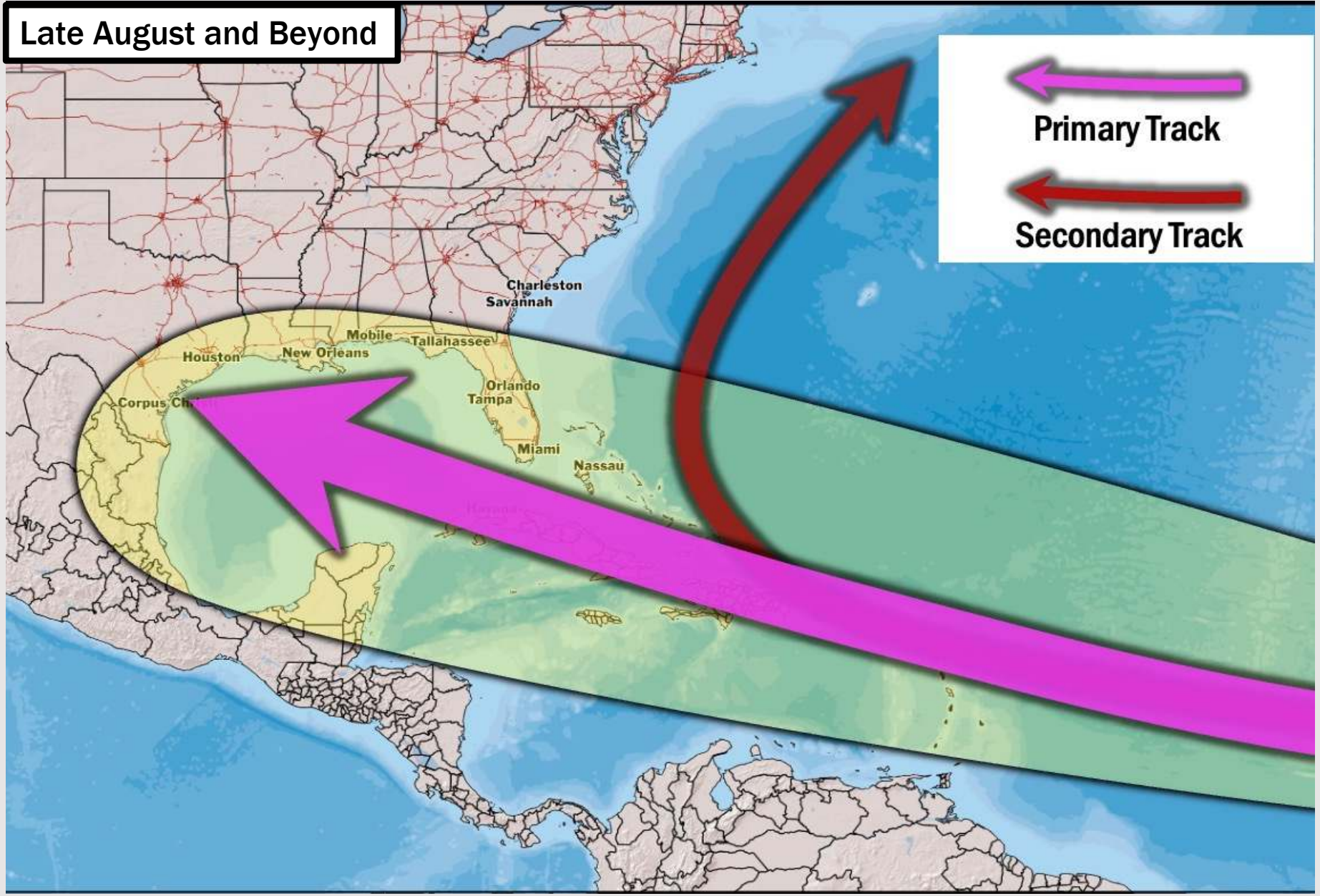
Current Radar: 1:00 PM CT



As always, please do not hesitate to reach out to us with any forecast questions via the chat option on Clarity or our on-call number, **(317)-560-8122** press **1** for forecast questions.

# Houston Pilots Tropical Update

Late August and Beyond

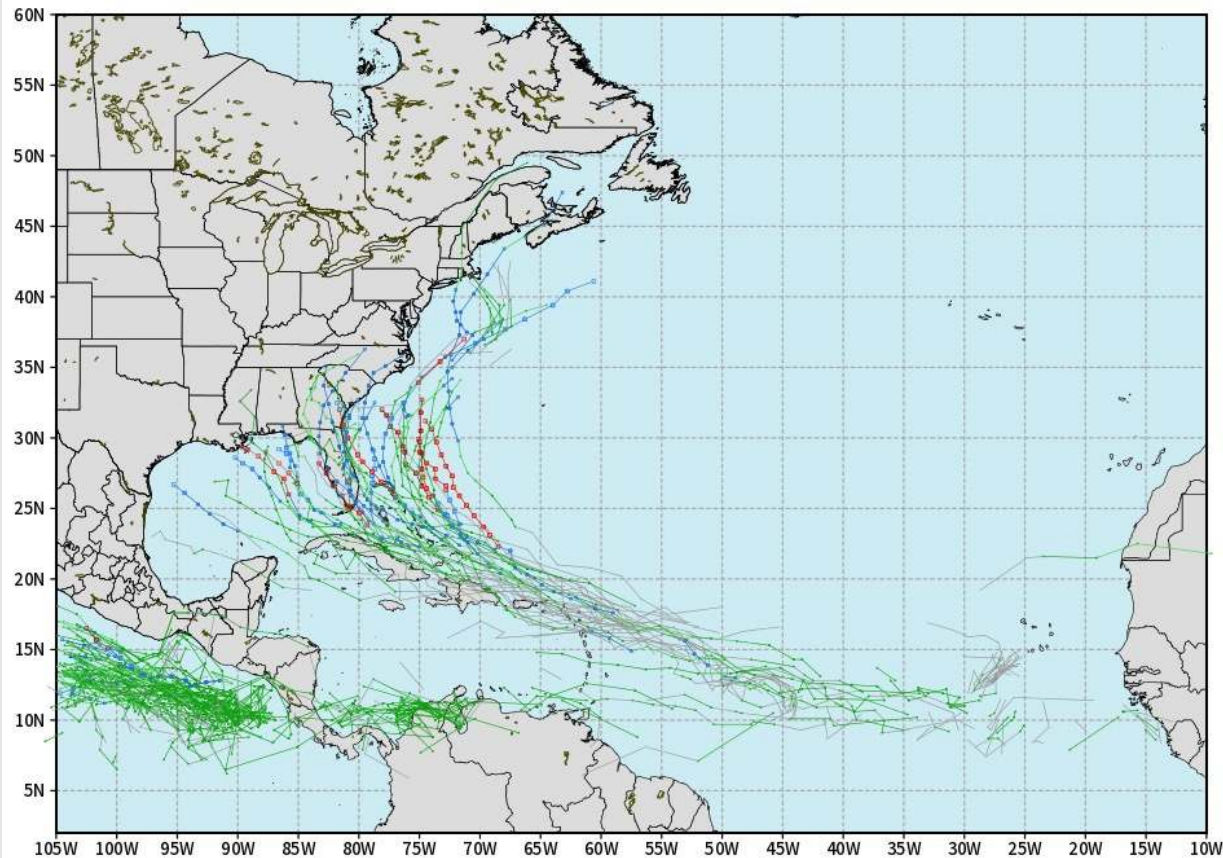


# Houston Pilots Tropical Update

## European Model Next 10 Days - Tropical Tracks

ECMWF ATLANTIC EPS Cyclone Locations --> Next [10-days]  
INIT: 00Z27JUL2024 --> UNTIL 00Z06AUG2024

o-o ENSEMBLE MEAN  
o-o 1000 - 1010 hPa  
o-o 980 - 999 hPa  
o-o 960 - 979 hPa  
o-o 950 - 959 hPa  
o-o < 950 hPa



[weathermodels.com](http://weathermodels.com)

Industry Energy according to our TOS (0558065700165600)

Not in favor of any tropical threats over the next 10 days to the HOU area.

Early signals are starting to show for possible development in the Tropical Atlantic next week. No threat is currently anticipated for the HOU area with this possible system.

# Houston Pilots Visibility Chart (miles)



## Forecast Confidence



Visibility	Sat 2 pm	Sat 3 pm	Sat 4 pm	Sat 5 pm	Sat 6 pm	Sat 7 pm	Sat 8 pm	Sat 9 pm	Sat 10 pm	Sat 11 pm	Sun 12 am	Sun 1 am	Sun 2 am	Sun 3 am	Sun 4 am	Sun 5 am	Sun 6 am	Sun 7 am	Sun 8 am	Sun 9 am	Sun 10 am	Sun 11 am	Sun 12 pm	Sun 1 pm
Houston Pilots N - 610 Bridge	6.9	6.9	6.9	4.9	5.9	5.9	6.9	6.9	6.9	6.9	6.9	6.9	6.9	5.9	4.9	4.9	4.9	4.9	4.9	3.9	4.9	5.9	6.9	6.9
Houston Pilots M - Kinder 1	6.9	6.9	6.9	4.9	5.9	5.9	6.9	6.9	6.9	6.9	6.9	6.9	6.9	5.9	4.9	4.9	4.9	4.9	4.9	3.9	4.9	5.9	6.9	6.9
Houston Pilots L - Greens Bayou	6.9	6.9	6.9	4.9	5.9	5.9	6.9	6.9	6.9	6.9	6.9	6.9	6.9	5.9	4.9	4.9	4.9	4.9	4.9	3.9	4.9	5.9	6.9	6.9
Houston Pilots K - Shell Crude	6.9	6.9	6.9	4.9	5.9	5.9	6.9	6.9	6.9	6.9	6.9	6.9	6.9	5.9	4.9	4.9	4.9	4.9	4.9	3.9	4.9	5.9	6.9	6.9
Houston Pilots J - Lynchburg Ferries	6.9	6.9	6.9	4.9	5.9	5.9	6.9	6.9	6.9	6.9	6.9	6.9	6.9	5.9	4.9	4.9	4.9	4.9	4.9	3.9	4.9	5.9	6.9	6.9
Houston Pilots I - Exxon 3	6.9	6.9	6.9	4.9	5.9	5.9	6.9	6.9	6.9	6.9	6.9	6.9	6.9	6.9	4.9	4.9	4.9	4.9	4.9	3.9	4.9	5.9	6.9	6.9
Houston Pilots H - Morgans Point	6.9	6.9	6.9	4.9	5.9	5.9	6.9	6.9	6.9	6.9	6.9	6.9	6.9	6.9	4.9	4.9	4.9	4.9	4.9	3.9	4.9	5.9	6.9	6.9
Houston Pilots G - 75/76	6.9	5.9	6.9	4.9	5.9	5.9	6.9	6.9	6.9	6.9	6.9	6.9	6.9	6.9	6.9	5.9	5.9	6.9	4.9	4.9	5.9	6.9	9	9
Houston Pilots F - 63/64	6.9	5.9	6.9	4.9	5.9	5.9	6.9	6.9	6.9	6.9	6.9	6.9	6.9	6.9	6.9	5.9	5.9	6.9	4.9	4.9	5.9	6.9	9	9
Houston Pilots E - 51/52	6.9	5.9	5.9	5.9	5.9	6.9	6.9	6.9	6.9	6.9	6.9	6.9	6.9	6.9	6.9	5.9	6.9	6.9	5.9	4.9	5.9	6.9	9	12
Houston Pilots D - 37/38	6.9	5.9	6.9	5.9	5.9	6.9	6.9	6.9	6.9	6.9	6.9	6.9	6.9	6.9	6.9	5.9	6.9	6.9	5.9	4.9	5.9	6.9	9	12
Houston Pilots C - 25/26	6.9	5.9	6.9	5.9	6.9	6.9	7.9	6.9	6.9	6.9	6.9	6.9	6.9	6.9	6.9	6.9	6.9	6.9	6.9	4.9	6.9	6.9	12	12
Houston Pilots B - 11/12	6.9	5.9	6.9	5.9	6.9	6.9	7.9	6.9	9	6.9	6.9	6.9	6.9	6.9	6.9	6.9	6.9	6.9	6.9	4.9	6.9	6.9	12	12
Houston Pilots A - 1 & 2 Bravo	6.9	5.9	6.9	6.9	6.9	7.9	10.1	9	9	7.9	9	10.1	10.1	10.1	10.1	7.9	9	10.1	7.9	6.9	7.9	10.1	12	12

**NOTE: This is automated data that may/may not agree with the official BAM thinking that's found on the daily slides or special visibility report slides. This data should be used as a guide only**

# Houston Pilots Wind Chart



## Forecast Confidence



## Example



Wind	Sat 2 pm	Sat 3 pm	Sat 4 pm	Sat 5 pm	Sat 6 pm	Sat 7 pm	Sat 8 pm	Sat 9 pm	Sat 10 pm	Sat 11 pm	Sun 12 am	Sun 1 am	Sun 2 am	Sun 3 am	Sun 4 am	Sun 5 am	Sun 6 am	Sun 7 am	Sun 8 am	Sun 9 am	Sun 10 am	Sun 11 am	Sun 12 pm	Sun 1 pm
Houston Pilots N - 610 Bridge	3 9 ←	5 10 ↖	5 10 ↖	6 12 ↖	5 10 ↖	5 10 ↖	5 10 ↖	3 8 ↖	3 7 ↖	3 7 ↖	2 6 ↖	2 6 ↖	2 6 ↖	2 6 ↖	2 6 ↖	3 7 ↖	3 7 ↖	3 7 ↖	3 8 ↖	3 9 ↖	3 10 ↖	5 12 ↖	6 14 ↖	6 14 ↖
Houston Pilots M - Kinder 1	3 9 ←	5 10 ↖	5 10 ↖	6 12 ↖	5 10 ↖	5 10 ↖	5 9 ↖	3 8 ↖	3 7 ↖	3 7 ↖	2 6 ↖	6 6 ↖	6 6 ↖	6 6 ↖	6 6 ↖	7 7 ↖	7 7 ↖	7 7 ↖	7 8 ↖	8 9 ↖	9 10 ↖	10 12 ↖	12 14 ↖	14 14 ↖
Houston Pilots L - Greens Bayou	3 9 ←	5 10 ↖	5 10 ↖	6 12 ↖	5 10 ↖	5 10 ↖	3 8 ↖	3 7 ↖	3 7 ↖	3 6 ↖	2 6 ↖	2 6 ↖	2 6 ↖	2 6 ↖	2 7 ↖	3 7 ↖	3 7 ↖	3 7 ↖	3 8 ↖	3 9 ↖	3 10 ↖	5 12 ↖	6 14 ↖	6 14 ↖
Houston Pilots K - Shell Crude	5 9 ←	5 9 ←	5 10 ↖	6 12 ↖	6 10 ↖	5 10 ↖	3 9 ↖	3 8 ↖	3 7 ↖	3 7 ↖	2 6 ↖	2 6 ↖	2 6 ↖	2 6 ↖	2 6 ↖	3 7 ↖	3 7 ↖	3 7 ↖	3 8 ↖	3 9 ↖	3 10 ↖	5 12 ↖	6 14 ↖	6 14 ↖
Houston Pilots J - Lynchburg Ferries	3 9 ←	3 9 ←	5 10 ↖	5 12 ↖	5 10 ↖	5 10 ↖	3 9 ↖	3 8 ↖	3 7 ↖	2 6 ↖	2 6 ↖	2 6 ↖	2 6 ↖	2 6 ↖	2 7 ↖	2 7 ↖	2 7 ↖	2 7 ↖	3 8 ↖	3 9 ↖	3 10 ↖	5 12 ↖	6 14 ↖	6 14 ↖
Houston Pilots I - Exxon 3	6 10 ↙	7 13 ↙	7 13 ↙	8 13 ↙	7 13 ↙	7 12 ↙	7 12 ↙	6 10 ↙	6 9 ↙	6 9 ↙	6 9 ↙	6 9 ↙	6 9 ↙	6 9 ↙	6 9 ↙	6 9 ↙	6 9 ↙	6 9 ↙	6 10 ↙	6 10 ↙	7 12 ↙	7 12 ↙	8 13 ↙	8 15 ↙
Houston Pilots H - Morgans Point	6 10 ↙	7 12 ↙	7 13 ↙	8 13 ↙	7 12 ↙	7 12 ↙	7 12 ↙	7 10 ↙	7 10 ↙	7 10 ↙	6 9 ↙	6 9 ↙	6 9 ↙	6 9 ↙	6 10 ↙	7 10 ↙	6 10 ↙	6 10 ↙	6 10 ↙	7 10 ↙	7 10 ↙	7 13 ↙	7 14 ↙	8 15 ↙
Houston Pilots G - 75/76	6 10 ↙	6 12 ↙	7 13 ↙	7 13 ↙	7 13 ↙	8 13 ↙	8 13 ↙	8 12 ↙	8 12 ↙	8 12 ↙	8 12 ↙	8 12 ↙	8 12 ↙	8 12 ↙	8 13 ↙	8 13 ↙	8 13 ↙	8 13 ↙	8 13 ↙	8 13 ↙	8 13 ↙	8 14 ↙	8 15 ↙	8 16 ↙
Houston Pilots F - 63/64	6 10 ↙	6 12 ↙	6 13 ↙	7 13 ↙	7 12 ↙	7 13 ↙	8 13 ↙	8 12 ↙	8 12 ↙	8 13 ↙	8 13 ↙	8 13 ↙	8 13 ↙	8 13 ↙	8 13 ↙	8 13 ↙	8 13 ↙	8 13 ↙	8 13 ↙	8 14 ↙	8 14 ↙	8 14 ↙	8 15 ↙	8 16 ↙
Houston Pilots E - 51/52	6 10 ↙	6 12 ↙	6 12 ↙	7 13 ↙	8 12 ↙	8 13 ↙	8 13 ↙	8 13 ↙	8 13 ↙	8 13 ↙	8 13 ↙	8 14 ↙	8 14 ↙	8 14 ↙	8 14 ↙	9 14 ↙	9 14 ↙	9 14 ↙	9 14 ↙	9 14 ↙	9 14 ↙	9 15 ↙	9 15 ↙	9 16 ↙
Houston Pilots D - 37/38	6 10 ↙	6 12 ↙	6 12 ↙	7 13 ↙	7 12 ↙	8 13 ↙	8 13 ↙	8 13 ↙	8 13 ↙	8 14 ↙	8 14 ↙	8 14 ↙	9 14 ↙	9 14 ↙	9 14 ↙	9 14 ↙	9 14 ↙	9 14 ↙	9 14 ↙	9 15 ↙	9 15 ↙	9 15 ↙	9 15 ↙	9 16 ↙
Houston Pilots C - 25/26	6 9 ↙	6 10 ↙	6 12 ↙	7 12 ↙	7 12 ↙	8 13 ↙	8 13 ↙	8 13 ↙	8 13 ↙	8 14 ↙	8 14 ↙	8 14 ↙	9 14 ↙	9 14 ↙	9 14 ↙	9 15 ↙	9 14 ↙	9 14 ↙	9 15 ↙	9 15 ↙	9 15 ↙	9 15 ↙	9 15 ↙	9 16 ↙
Houston Pilots B - 11/12	6 10 ↙	7 12 ↙	7 12 ↙	7 13 ↙	7 13 ↙	8 13 ↙	8 13 ↙	8 13 ↙	8 13 ↙	8 14 ↙	8 14 ↙	8 14 ↙	8 14 ↙	8 14 ↙	8 15 ↙	8 15 ↙	8 15 ↙	8 15 ↙	8 15 ↙	8 15 ↙	8 15 ↙	8 15 ↙	9 15 ↙	9 16 ↙
Houston Pilots A - 1 & 2 Bravo	6 9 ↙	6 10 ↙	6 12 ↙	7 13 ↙	8 13 ↙	8 13 ↙	8 14 ↙	8 14 ↙	9 14 ↙	10 15 ↙	10 15 ↙	10 15 ↙	10 15 ↙	10 15 ↙	10 16 ↙	10 16 ↙	10 16 ↙	10 16 ↙	10 16 ↙	10 16 ↙	10 16 ↙	10 16 ↙	10 16 ↙	10 16 ↙

**NOTE: This is automated data that may/may not agree with the official BAM thinking that's found on the daily slides. This data should be used as a guide only.**

# Houston Pilots: SAT. 7/27/2024



## Forecast Discussion

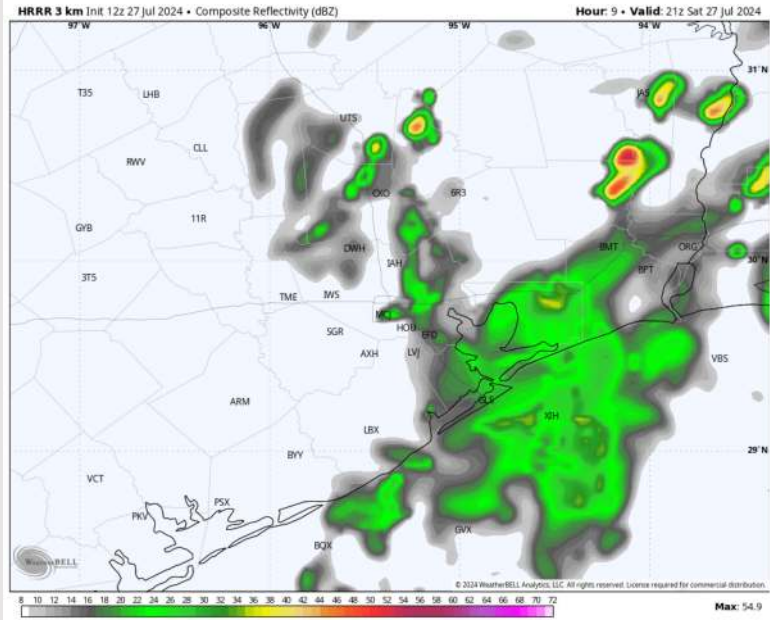
**Precip:** Shower and storms will come to an end through 7pm. A light stray shower cannot be ruled out over night (10%).

**Wind:** Winds favored to be out of the SE for the rest of the day. **N of Morgan's Point:** Winds will be at 3 – 8 kts for the entire day. **S of Morgan's Point:** Favoring winds at 8 – 12 kts during the evening

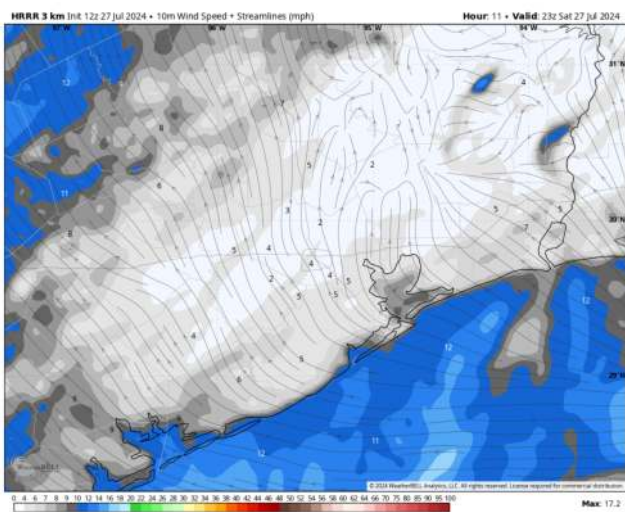
**Low Temps:** **N of Morgan's Point:** upper 70s F. **S of Morgan's Point:** Low 80s F.

**Visibility:** Fog is not favored for today; however, lowered visibilities are favored in heavy downpours.

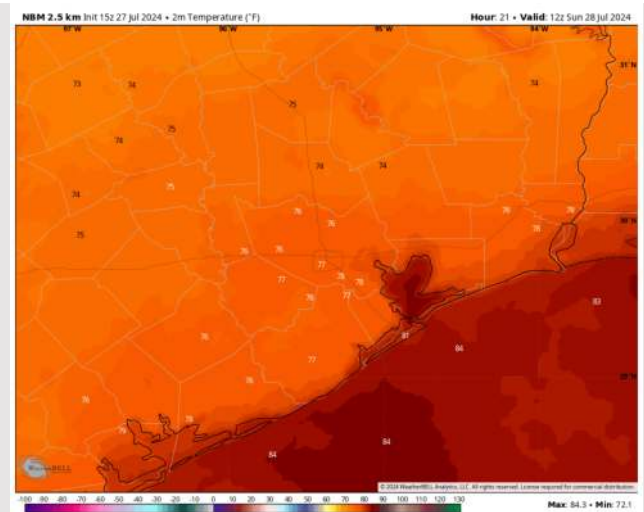
## Precip Image: 4 PM CT



Wind Speed:  
6 PM CT



Low Temps  
Tonight



# Houston Pilots: SUN. 7/28/2024



## Forecast Discussion

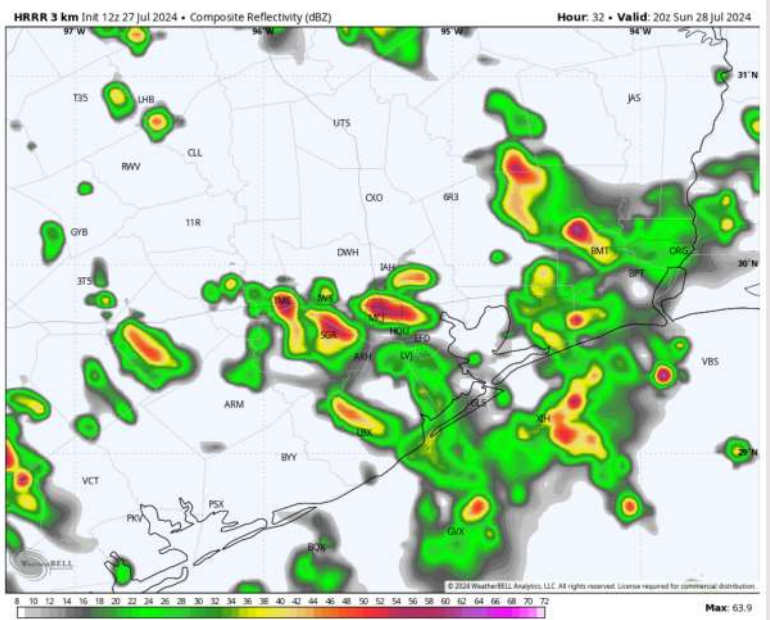
**Precip:** Scattered (40-60%) showers/storms will be possible from 6 AM through 7PM before conditions dry out for the rest of the evening on Sunday. **Lightning and few gusts of 25+kts will be possible with stronger storms**

**Wind:** Winds will be out of the S/SE throughout the day Sunday. **N of Morgan's Point:** Winds at 3 – 8 kts throughout the day on Sunday. **S of Morgan's Point:** Winds at 9 – 14 kts throughout the day on Sunday. Localized non-thunderstorm-related wind gusts of 20kts will be possible for all stations throughout the day.

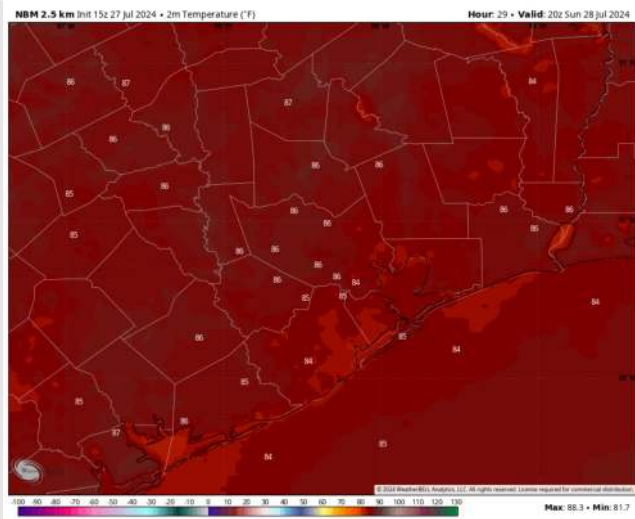
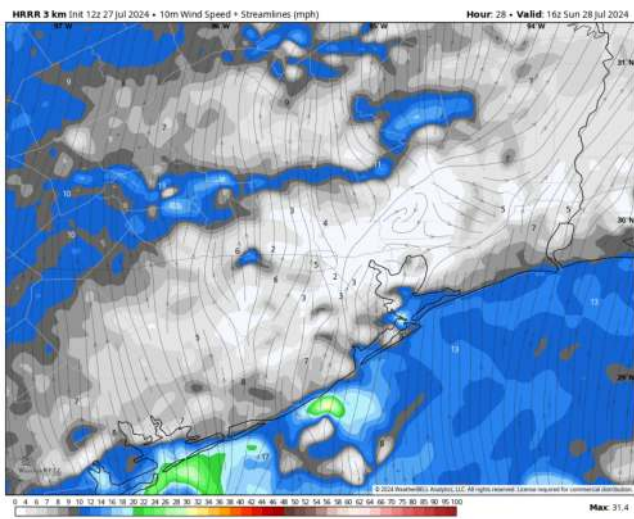
**High Temps:** **N of Morgan's Point:** Mid to upper 80s F. **S of Morgan's Point:** Mid 80s F.

**Visibility:** Fog is not favored for Sunday; however, visibility can be reduced under heavy downpours!

## Precip Image: 3 PM CT



Wind Speed:  
11 AM CT



High Temps  
Sunday

# Houston Pilots: MON. 7/29/2024



## Forecast Discussion

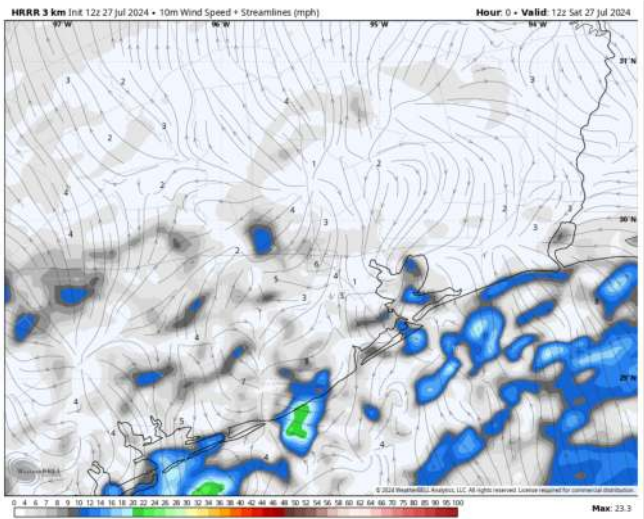
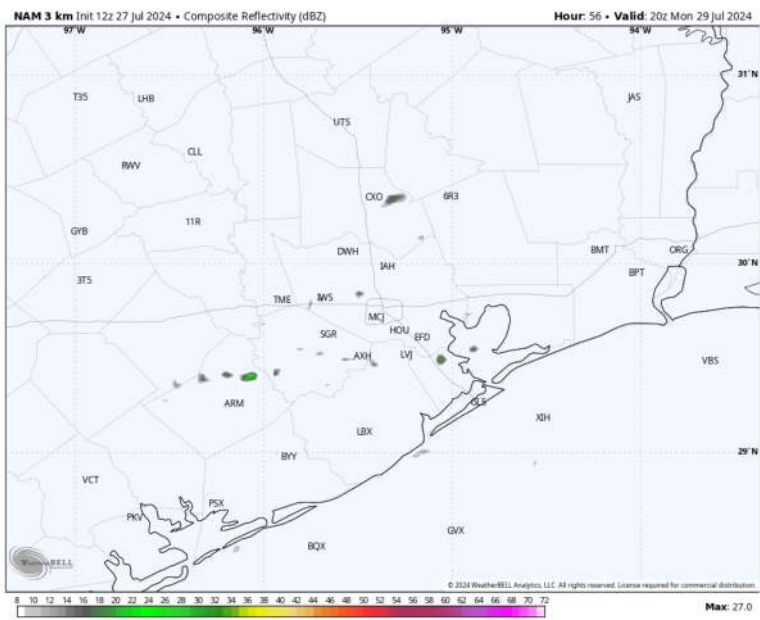
**Precip:** Stray hit/miss showers in play between 12 – 7 PM, but otherwise favoring dry conditions for the rest of Monday

**Wind:** Winds will be generally out of the S/SE throughout Monday. **N of Morgan's Point:** Winds consistently at 4-9 kts through Monday. **S of Morgan's Point:** Winds at 9-15 kts throughout the day on Monday. Localized wind gusts of 20 kts possible for all Stations all day.

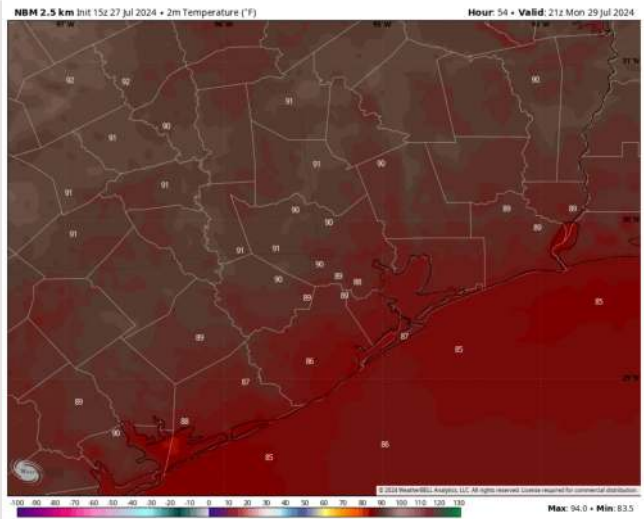
**High Temps:** **N of Morgan's Point:** Low 90s F. **S of Morgan's Point:** Upper 80s F.

**Visibility:** Not anticipating any fog concerns for Monday.

## Precip Image: 3 PM CT



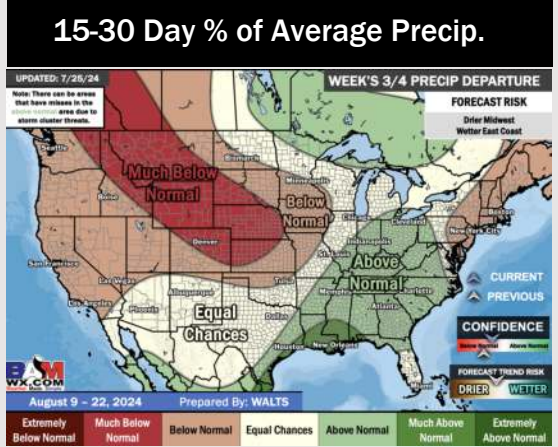
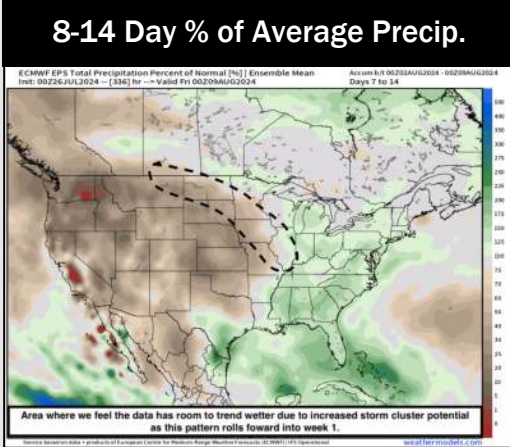
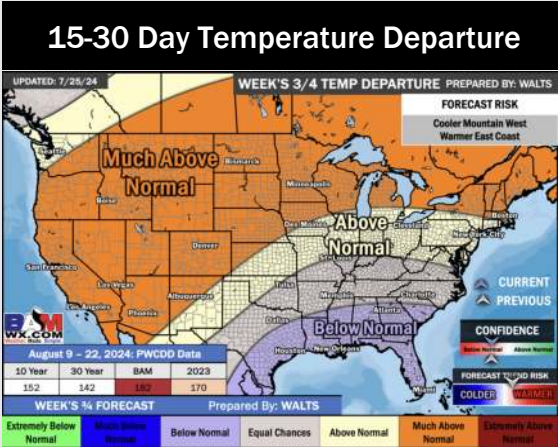
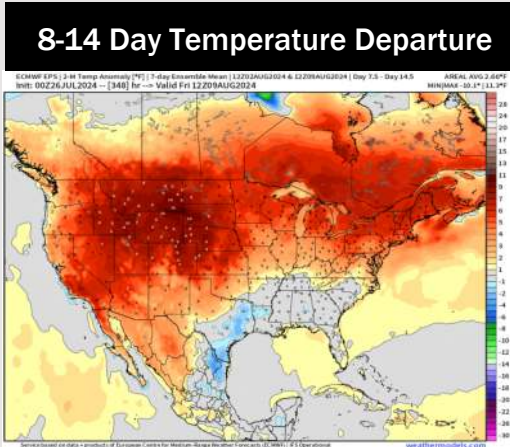
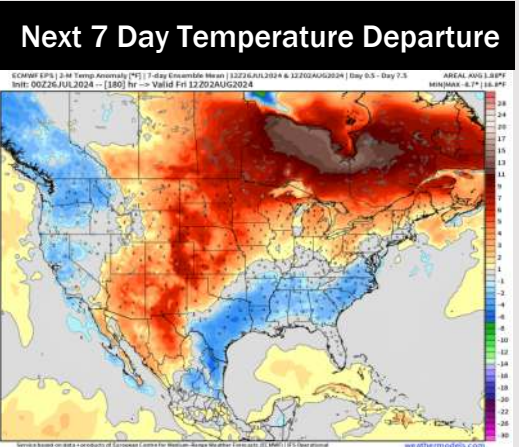
Wind Speed  
7 AM CT



High Temps  
Monday



# Houston Pilots: 7/27/24



- Temps are expected to be below normal for the week 1 timeframe. Periods of scattered rain/storms will occur daily over the next week. Some could be heavy in nature.
- Above normal precipitation chances are favored for the week 2 timeframe. Below normal temperatures continue for the week 2 timeframe.
- Above normal chances for precipitation and below normal temperatures are favored in the weeks 3/4 timeframe.