

Houston Pilots Forecast Package

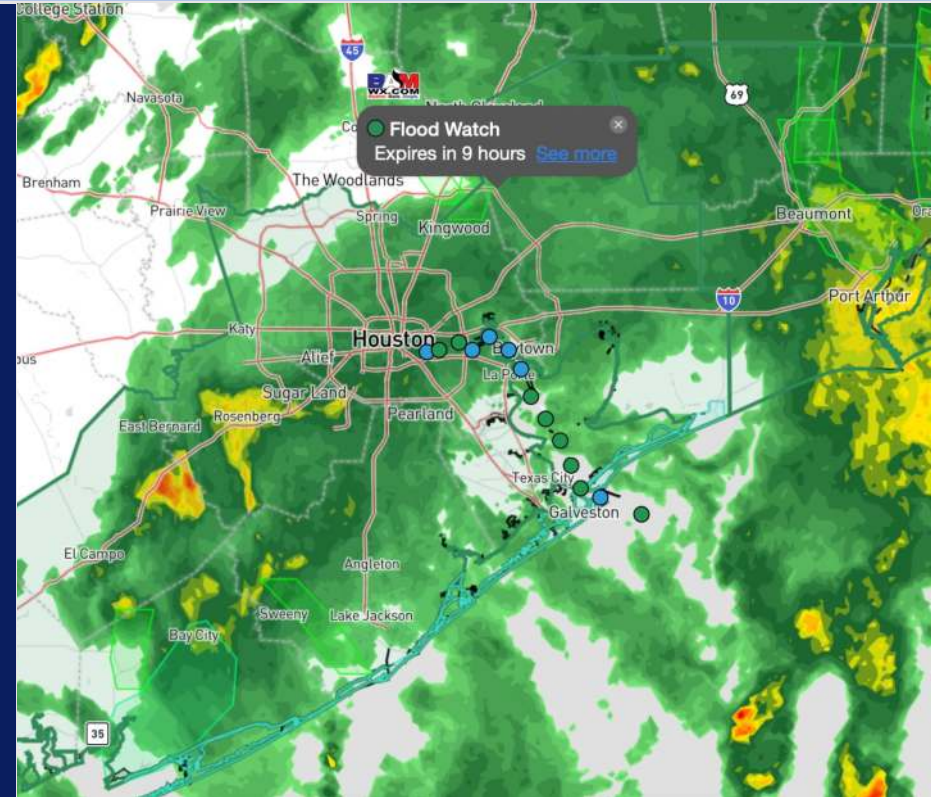


Updated: 12:40 PM CT
Thursday, July 25, 2024

Forecaster: Hope Kleitsch

Weather Headlines

- Scattered to Widespread downpours/storms favored over the next 36 hours!
- **A few stronger gusts embedded within storms of 25kts + will be in play, especially with storms.**
- Not anticipating any fog concerns the next few days. Low visibilities are likely in heavy downpours.



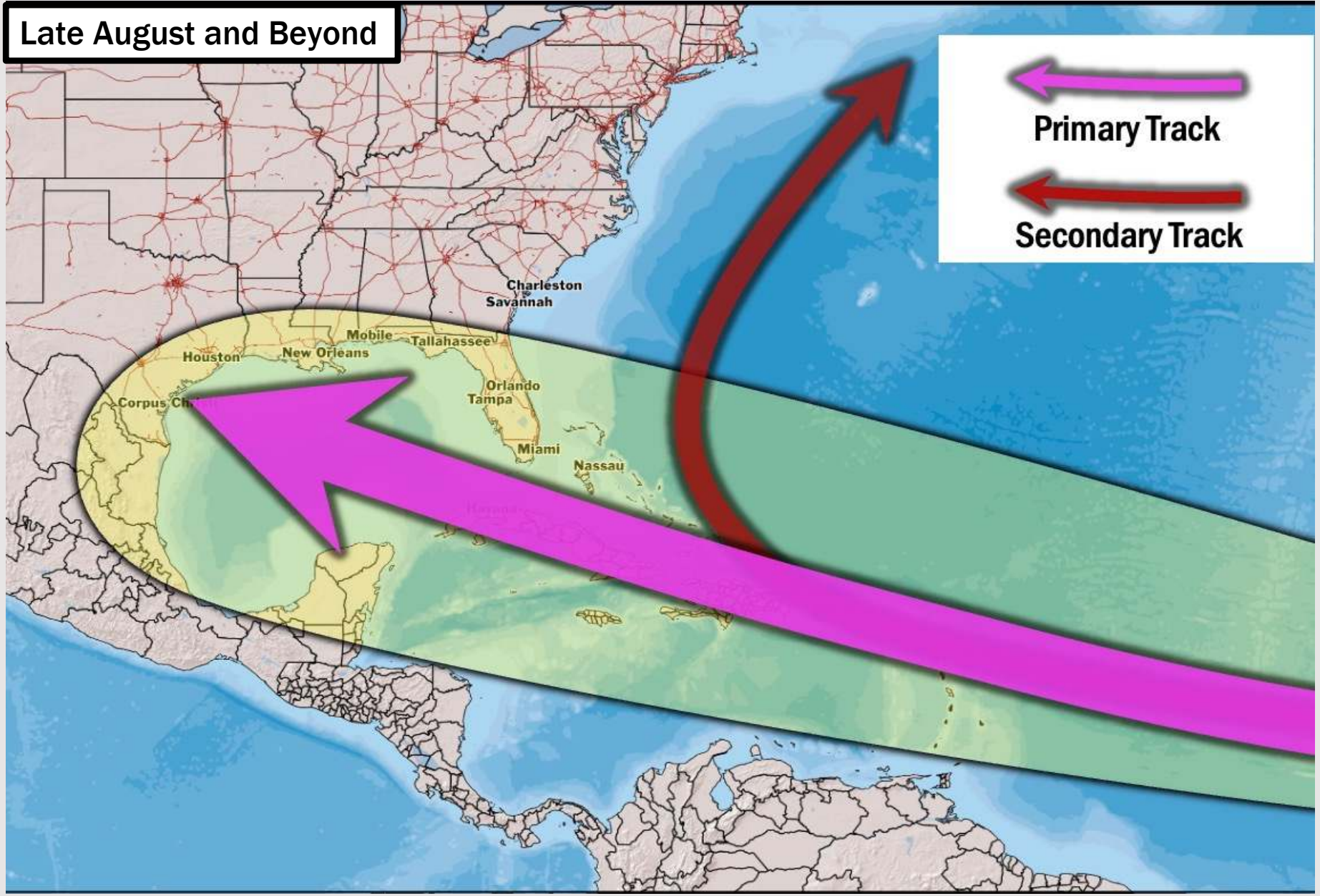
Current Radar: 12:40 PM CT



As always, please do not hesitate to reach out to us with any forecast questions via the chat option on Clarity or our on-call number, **(317)-560-8122** press **1** for forecast questions.

Houston Pilots Tropical Update

Late August and Beyond



← Primary Track

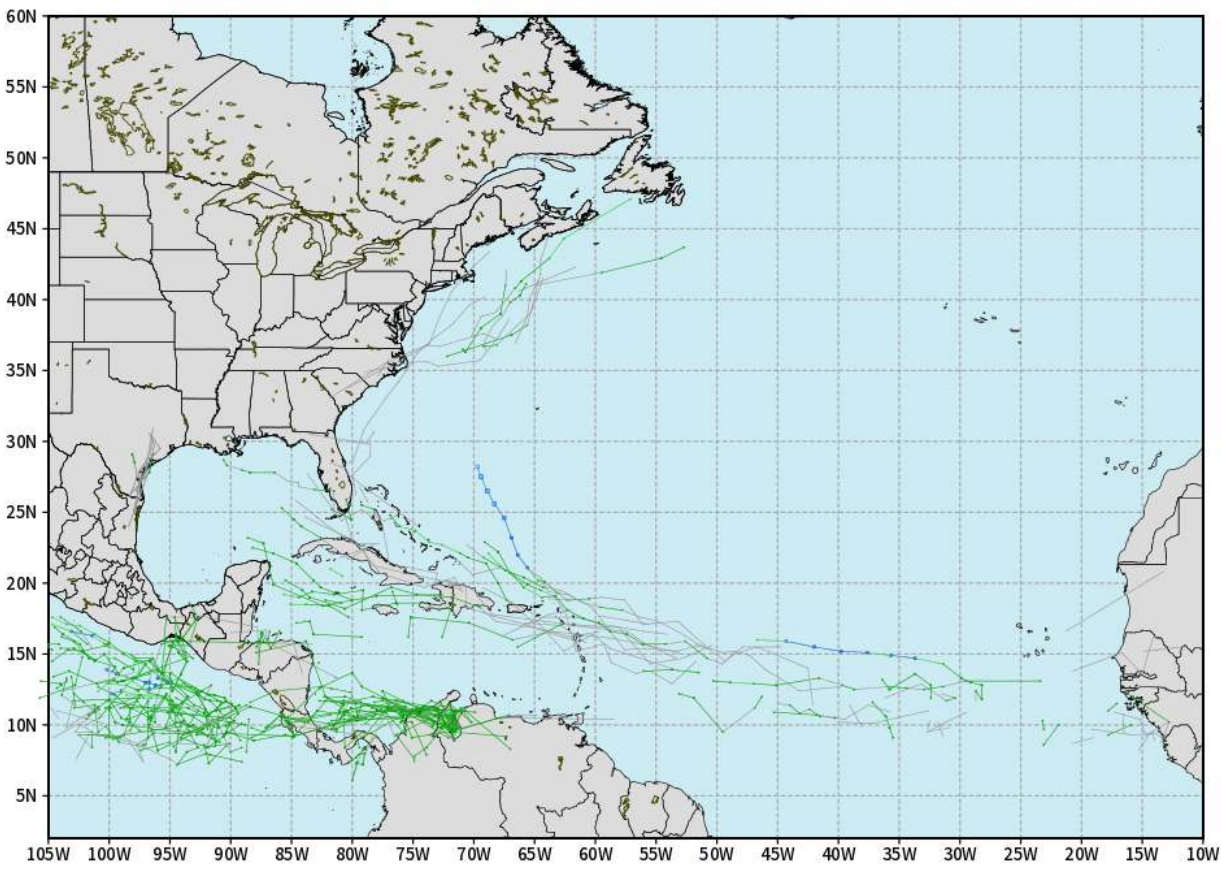
← Secondary Track

Houston Pilots Tropical Update

European Model Next 10 Days - Tropical Tracks

ECMWF ATLANTIC EPS Cyclone Locations --> Next [10-days]
INIT: 00Z25JUL2024 --> UNTIL 00Z04AUG2024

o-o ENSEMBLE MEAN
o-o 1000 - 1010 hPa
o-o 980 - 999 hPa
o-o 960 - 979 hPa
o-o 950 - 959 hPa
o-o < 950 hPa



weathermodels.com

Not in favor of any tropical threats over the next 10 days to the HOU area.

Early signals are starting to show for possible development in the Tropical Atlantic mid/late next week. No threat is anticipated for the HOU area with this possible system.

Houston Pilots Visibility Chart (miles)



Visibility	Thu 2 pm	Thu 3 pm	Thu 4 pm	Thu 5 pm	Thu 6 pm	Thu 7 pm	Thu 8 pm	Thu 9 pm	Thu 10 pm	Thu 11 pm	Fri 12 am	Fri 1 am	Fri 2 am	Fri 3 am	Fri 4 am	Fri 5 am	Fri 6 am	Fri 7 am	Fri 8 am	Fri 9 am	Fri 10 am	Fri 11 am	Fri 12 pm	Fri 1 pm
Houston Pilots N - 610 Bridge	2	2.9	3.9	4.9	4.9	3.9	3.9	4.9	5.9	4.9	5.9	4.9	5.9	6.9	5.9	4.9	4.9	5.9	4.9	3.9	3.9	2.9	4.9	4.9
Houston Pilots M - Kinder 1	1.6	2.9	3.9	3.9	4.9	3.9	3.9	4.9	4.9	3.9	5.9	4.9	5.9	6.9	5.9	4.9	4.9	4.9	4.9	2.9	2.9	2.9	4.9	3.9
Houston Pilots L - Greens Bayou	1.1	2	3.9	3.9	4.9	4.9	3.9	4.9	3.9	3.9	5.9	4.9	5.9	4.9	3.9	2	2.9	2.9	2.5	0.5	1.1	1.6	2.9	2.9
Houston Pilots K - Shell Crude	1.1	1.6	3.9	3.9	4.9	4.9	3.9	4.9	3.9	3.9	5.9	4.9	5.9	4.9	3.9	1.1	2.9	2.9	1.6	0.2	1.1	1.6	2.9	2.5
Houston Pilots J - Lynchburg Ferries	1.6	1.6	3.9	3.9	4.9	4.9	3.9	4.9	3.9	3.9	5.9	4.9	4.9	4.9	4.9	2.9	3.9	2.9	2.9	0.5	1.1	1.6	3.9	2.9
Houston Pilots I - Exxon 3	1.1	1.6	3.9	3.9	4.9	4.9	3.9	6.9	3.9	3.9	5.9	4.9	3.9	4.9	3.9	1.1	2.9	2.9	1.1	0.2	1.1	1.6	2.9	2.5
Houston Pilots H - Morgans Point	1.1	1.6	3.9	3.9	4.9	4.9	5.9	6.9	3.9	4.9	4.9	4.9	3.9	4.9	3.9	0.7	2.9	2.5	2.5	0.2	1.1	1.6	2.9	2.5
Houston Pilots G - 75/76	2.9	2	6.9	4.9	5.9	5.9	8	6.9	4.9	4.9	4.9	4.9	3.9	4.9	4.9	4.9	4.9	6.9	4.9	3.9	4.9	3.9	9	9
Houston Pilots F - 63/64	2.9	2	6.9	4.9	5.9	5.9	8	6.9	4.9	4.9	3.9	3.9	3.9	4.9	4.9	4.9	4.9	6.9	4.9	3.9	4.9	3.9	9	9
Houston Pilots E - 51/52	2.9	3.9	6.9	4.9	5.9	5.9	8	6.9	4.9	4.9	3.9	3.9	4.9	4.9	5.9	4.9	5.9	6.9	4.9	4.9	4.9	4.9	9	9
Houston Pilots D - 37/38	2.9	3.9	6.9	4.9	5.9	5.9	8	6.9	4.9	4.9	3.9	3.9	4.9	4.9	5.9	4.9	6.9	6.9	4.9	4.9	4.9	4.9	9	9
Houston Pilots C - 25/26	2.9	4.9	6.9	4.9	5.9	6.9	6.9	6.9	4.9	4.9	3.9	3.9	4.9	4.9	5.9	4.9	6.9	6.9	4.9	4.9	4.9	4.9	9	9
Houston Pilots B - 11/12	2.9	4.9	6.9	4.9	5.9	6.9	6.9	6.9	4.9	5.9	4.9	4.9	4.9	4.9	5.9	5.9	6.9	6.9	4.9	4.9	4.9	4.9	9	9
Houston Pilots A - 1 & 2 Bravo	4.9	4.9	6.9	5.9	6.9	6.9	8	6.9	6.9	6.9	6.9	4.9	4.9	5.9	6.9	5.9	6.9	6.9	5.9	4.9	5.9	4.9	9	9

NOTE: This is automated data that may/may not agree with the official BAM thinking that's found on the daily slides or special visibility report slides. This data should be used as a guide only

Houston Pilots Wind Chart



Forecast Confidence



Sustained wind 10 Knots
Gusts 15 Knots
Wind from the SE

Example



Wind	Thu 2 pm	Thu 3 pm	Thu 4 pm	Thu 5 pm	Thu 6 pm	Thu 7 pm	Thu 8 pm	Thu 9 pm	Thu 10 pm	Thu 11 pm	Fri 12 am	Fri 1 am	Fri 2 am	Fri 3 am	Fri 4 am	Fri 5 am	Fri 6 am	Fri 7 am	Fri 8 am	Fri 9 am	Fri 10 am	Fri 11 am	Fri 12 pm	Fri 1 pm
Houston Pilots N - 610 Bridge	7 16 ↗	7 17 ↗	8 17 ↗	8 16 ↗	7 16 ↗	7 15 ↗	6 14 ↗	6 13 ↗	5 12 ↗	5 10 ↗	5 9 ↗	3 9 ↗	5 9 ↗	3 9 ↗	3 9 ↗	3 9 ↗	3 9 ↗	3 9 ↗	3 9 ↗	5 9 ↗	5 9 ↗	5 10 ↗	6 12 ↗	6 13 ↗
Houston Pilots M - Kinder 1	7 16 ↗	7 17 ↗	8 17 ↗	8 16 ↗	7 16 ↗	6 15 ↗	6 13 ↗	6 13 ↗	5 12 ↗	5 10 ↗	5 9 ↗	3 9 ↗	5 9 ↗	3 9 ↗	3 9 ↗	3 9 ↗	3 9 ↗	3 9 ↗	3 9 ↗	5 9 ↗	5 9 ↗	5 10 ↗	6 12 ↗	6 13 ↗
Houston Pilots L - Greens Bayou	7 15 ↗	7 16 ↗	8 16 ↗	8 16 ↗	7 15 ↗	6 14 ↗	6 13 ↗	6 12 ↗	5 10 ↗	5 10 ↗	5 10 ↗	3 9 ↗	5 9 ↗	3 9 ↗	3 9 ↗	3 9 ↗	3 9 ↗	3 9 ↗	3 9 ↗	3 9 ↗	3 9 ↗	5 10 ↗	5 12 ↗	6 13 ↗
Houston Pilots K - Shell Crude	7 15 ↗	7 16 ↗	7 16 ↗	7 15 ↗	7 15 ↗	6 14 ↗	6 13 ↗	6 12 ↗	5 10 ↗	5 10 ↗	5 10 ↗	3 9 ↗	5 9 ↗	3 9 ↗	3 9 ↗	3 9 ↗	3 9 ↗	3 9 ↗	3 9 ↗	3 9 ↗	3 9 ↗	5 10 ↗	5 12 ↗	6 13 ↗
Houston Pilots J - Lynchburg Ferries	7 15 ↗	7 15 ↗	7 16 ↗	7 15 ↗	7 15 ↗	6 14 ↗	6 13 ↗	5 12 ↗	5 10 ↗	3 10 ↗	3 10 ↗	3 9 ↗	3 9 ↗	3 9 ↗	3 9 ↗	3 9 ↗	3 9 ↗	3 9 ↗	3 9 ↗	3 9 ↗	3 9 ↗	5 10 ↗	6 12 ↗	6 13 ↗
Houston Pilots I - Exxon 3	9 16 ↗	10 17 ↗	10 17 ↗	10 17 ↗	9 16 ↗	9 16 ↗	9 14 ↗	8 14 ↗	8 14 ↗	8 14 ↗	8 13 ↗	8 12 ↗	8 13 ↗	8 13 ↗	8 13 ↗	8 12 ↗	8 12 ↗	8 12 ↗	8 12 ↗	7 12 ↗	7 12 ↗	7 12 ↗	7 13 ↗	8 14 ↗
Houston Pilots H - Morgans Point	9 16 ↗	10 17 ↗	10 17 ↗	10 16 ↗	9 16 ↗	9 16 ↗	9 14 ↗	9 14 ↗	9 14 ↗	8 13 ↗	8 13 ↗	8 13 ↗	8 13 ↗	8 13 ↗	8 13 ↗	8 12 ↗	8 12 ↗	8 12 ↗	7 12 ↗	7 12 ↗	7 12 ↗	7 12 ↗	7 13 ↗	8 13 ↗
Houston Pilots G - 75/76	10 17 ↗	10 17 ↗	10 17 ↗	10 17 ↗	10 16 ↗	10 15 ↗	10 15 ↗	10 15 ↗	10 15 ↗	10 15 ↗	10 14 ↗	10 14 ↗	10 15 ↗	10 15 ↗	10 15 ↗	9 15 ↗	9 14 ↗	9 13 ↗	9 13 ↗	8 13 ↗	8 13 ↗	8 13 ↗	8 14 ↗	8 14 ↗
Houston Pilots F - 63/64	9 17 ↗	10 17 ↗	10 17 ↗	10 16 ↗	10 16 ↗	10 16 ↗	10 16 ↗	10 15 ↗	10 15 ↗	10 15 ↗	10 15 ↗	10 15 ↗	10 15 ↗	10 15 ↗	10 15 ↗	9 14 ↗	9 13 ↗	9 13 ↗	9 13 ↗	8 13 ↗	8 13 ↗	8 13 ↗	8 14 ↗	8 14 ↗
Houston Pilots E - 51/52	10 17 ↗	10 17 ↗	10 17 ↗	10 17 ↗	10 16 ↗	10 16 ↗	10 16 ↗	10 16 ↗	10 15 ↗	10 15 ↗	10 15 ↗	10 16 ↗	10 15 ↗	10 15 ↗	10 15 ↗	9 14 ↗	9 14 ↗	9 13 ↗	9 13 ↗	8 13 ↗	8 13 ↗	8 13 ↗	8 13 ↗	8 14 ↗
Houston Pilots D - 37/38	10 17 ↗	10 17 ↗	10 17 ↗	10 17 ↗	10 16 ↗	10 16 ↗	10 16 ↗	10 16 ↗	10 15 ↗	10 15 ↗	10 15 ↗	10 16 ↗	10 15 ↗	10 15 ↗	10 15 ↗	9 14 ↗	9 14 ↗	9 13 ↗	9 13 ↗	8 13 ↗	8 13 ↗	8 13 ↗	8 13 ↗	8 13 ↗
Houston Pilots C - 25/26	10 17 ↗	10 17 ↗	10 17 ↗	10 16 ↗	10 16 ↗	10 15 ↗	10 16 ↗	10 16 ↗	10 15 ↗	10 15 ↗	10 15 ↗	10 16 ↗	10 15 ↗	10 15 ↗	10 15 ↗	9 14 ↗	9 13 ↗	9 13 ↗	9 13 ↗	8 13 ↗	8 13 ↗	8 13 ↗	8 13 ↗	8 13 ↗
Houston Pilots B - 11/12	10 17 ↗	10 17 ↗	10 17 ↗	10 16 ↗	10 16 ↗	10 15 ↗	10 16 ↗	10 16 ↗	10 15 ↗	10 15 ↗	10 15 ↗	10 15 ↗	10 15 ↗	10 15 ↗	10 15 ↗	9 14 ↗	9 13 ↗	9 13 ↗	9 13 ↗	8 13 ↗	8 13 ↗	8 13 ↗	8 13 ↗	8 13 ↗
Houston Pilots A - 1 & 2 Bravo	10 17 ↗	10 17 ↗	10 17 ↗	10 16 ↗	10 16 ↗	10 16 ↗	10 16 ↗	10 17 ↗	10 17 ↗	10 16 ↗	10 16 ↗	10 17 ↗	10 17 ↗	10 16 ↗	10 15 ↗	10 15 ↗	10 15 ↗	10 15 ↗	9 14 ↗	9 14 ↗	9 14 ↗	9 14 ↗	8 14 ↗	8 14 ↗

NOTE: This is automated data that may/may not agree with the official BAM thinking that's found on the daily slides. This data should be used as a guide only.

Houston Pilots: THU. 7/25/2024



Forecast Discussion

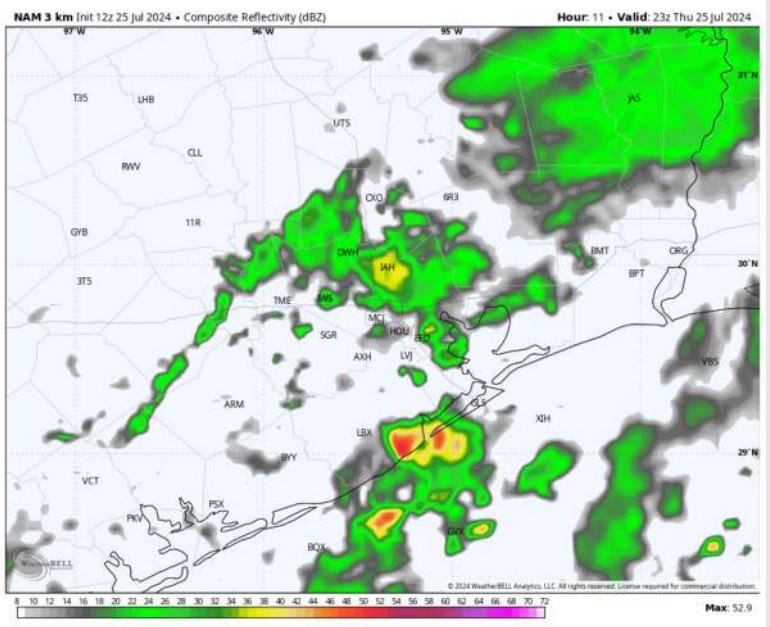
Precip: Widespread (80%) heavy rain showers and thunderstorms will continue through 5 PM. Showers/storms are expected to become more scattered (30%) after then, lingering through the remainder of the night. **Lightning and 25-30kts wind gusts will be possible in thunderstorms!**

Wind: Winds will be rather variable through 4 Pm before settling generally out of the E/SE through the rest of the night. **N of Morgan's Point:** Winds at 7 – 12 kts until 6 PM, decreasing to 3 – 7 kts through the remainder of the night. **S of Morgan's Point:** Winds at 15-20 kts through 3 PM. Winds are expected to decrease to 8 – 11 kts through the rest of the day.

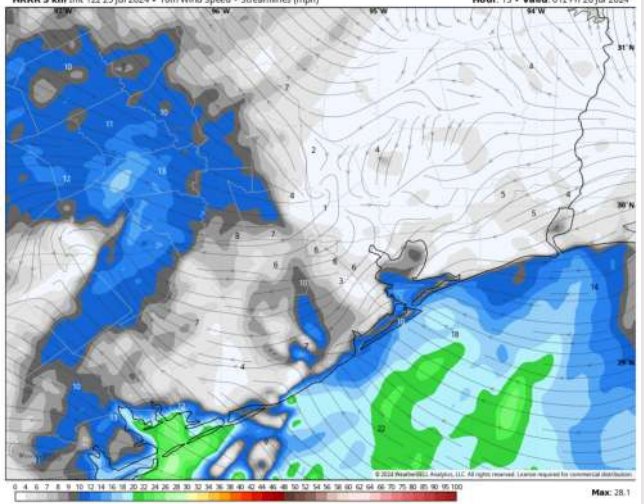
Low Temps: **N of Morgan's Point:** Mid 70s F. **S of Morgan's Point:** Upper 70s F.

Visibility: Fog is not favored today; however, visibility can be reduced under heavy downpours!

Precip Image: 6 PM CT

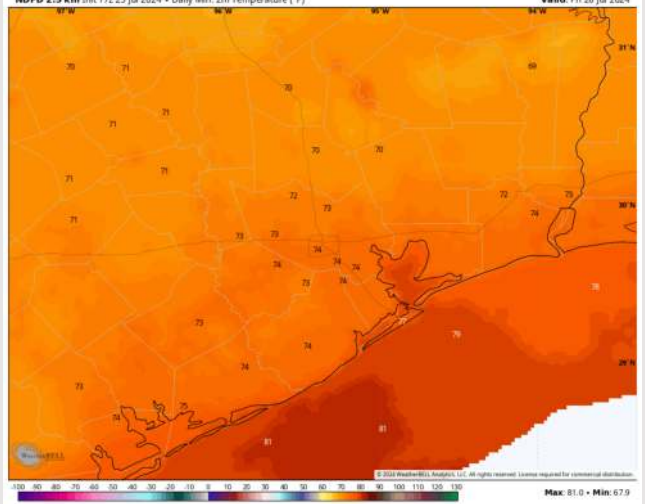


HRRR 3 km Init 12z 25 Jul 2024 • 10m Wind Speed + Streamlines (mph) Hour: 13 • Valid: 01z Fri 26 Jul 2024



Wind Speed:
8 PM CT

NDFD 2.5 km Init 17z 25 Jul 2024 • Daily Min. 2m Temperature (F) Valid: Fri 26 Jul 2024



Low Temps
FRI AM

Houston Pilots: FRI. 7/26/2024



Forecast Discussion

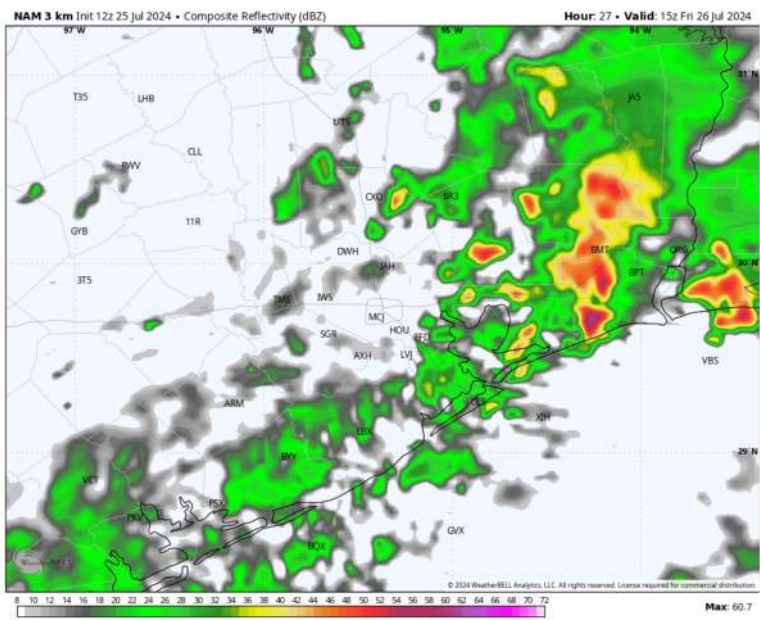
Precip: Scattered (40%) rain showers and thunderstorms will be possible through 3 PM, before chances decrease to 20% for the remainder of Friday. A few heavy downpours are likely through 1 PM, as showers will become lighter in nature after then and for the remainder of the day.

Wind: Winds will be consistently out of the S / SE through 8AM until the front passes, and then will become variable through 2PM. Beyond 2PM, winds will be out of the E/SE. **N of Morgan's Point:** Winds consistently at 2 – 8 kts throughout the day Friday. **S of Morgan's Point:** Winds at 8 – 16 kts through 1 PM before weakening to 3 – 8 kts through 5PM before winds pick back up to 7 – 12 kts for the rest of the day.

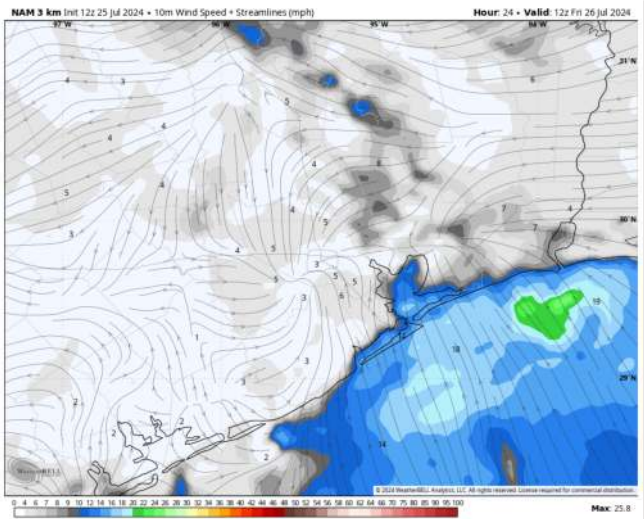
High Temps: **N of Morgan's Point:** Mid 80s F. **S of Morgan's Point:** Mid 80s F.

Visibility: Not anticipating any fog concerns for Friday. Visibility can be decreased under heavy downpours!

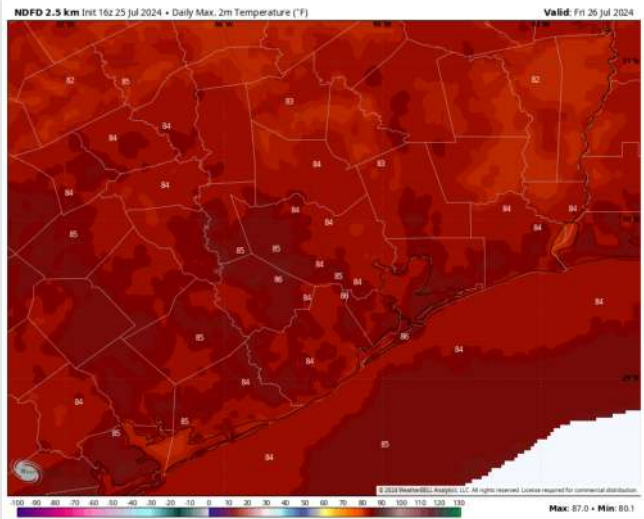
Precip Image: 10 AM CT



Wind Speed
7 AM CT



High Temps
Friday



Houston Pilots: SAT. 7/27/2024



Forecast Discussion

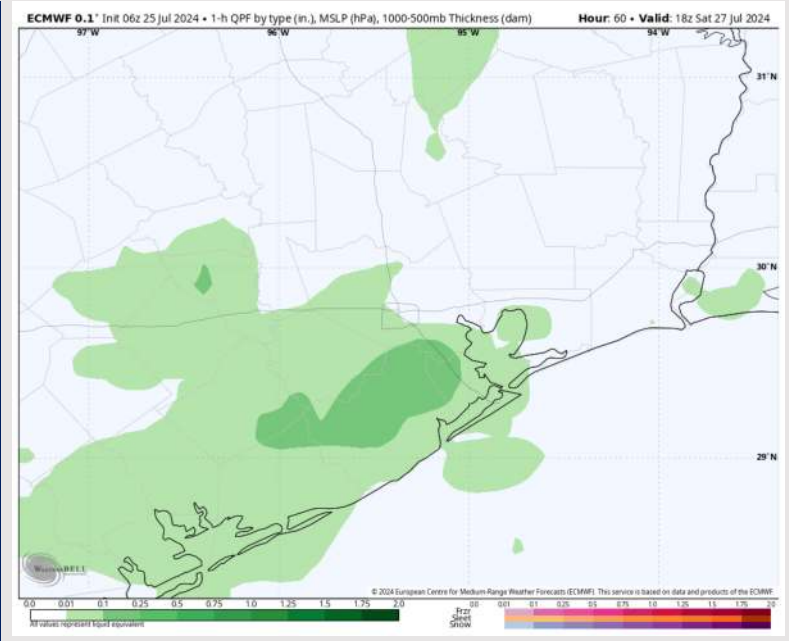
Precip: Widespread rain showers (70%) move in for all stations around 4 AM and will continue through 7 AM. After then, showers will become more scattered (30%) throughout the day before clearing out by 7 PM. Dry conditions are favored through the remainder of the night.

Wind: Winds will be generally out of the S/SW throughout Saturday. Winds can become variable at times. **N of Morgan's Point:** Winds will be at 2 – 7 kts for the entire day. **S of Morgan's Point:** Favoring winds at 8 – 12 kts through 6 AM before decreasing to 3 – 7 kts through 4PM when then winds will pick back up to 6 – 11 kts throughout the rest of the day Saturday.

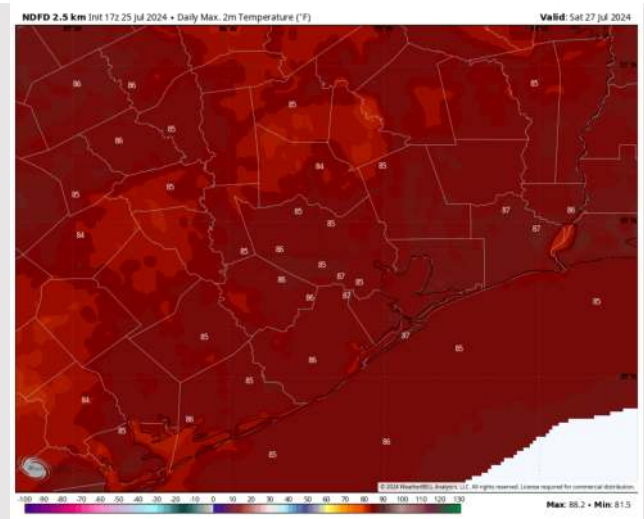
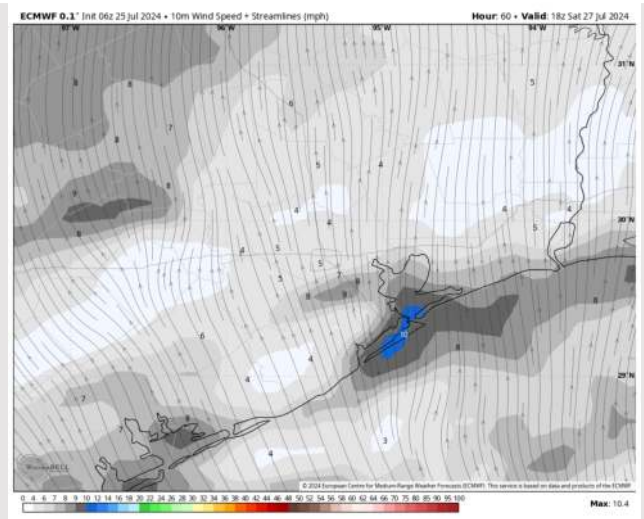
High Temps: **N of Morgan's Point:** Mid to upper 80s F. **S of Morgan's Point:** Mid 80s F.

Visibility: Fog is not favored for Saturday; however, lowered visibilities are favored in heavy downpours.

Precip Image: 1 PM CT

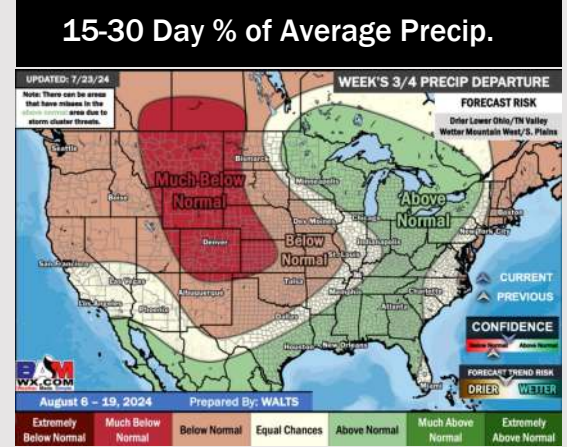
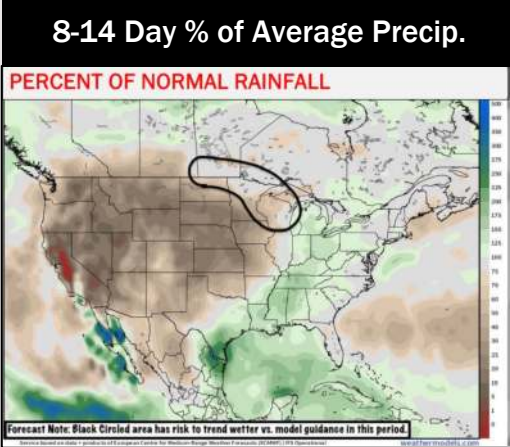
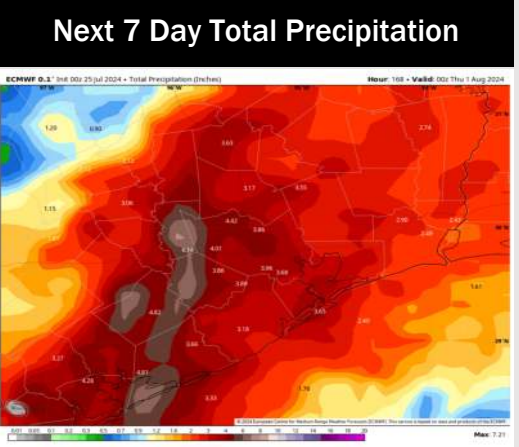
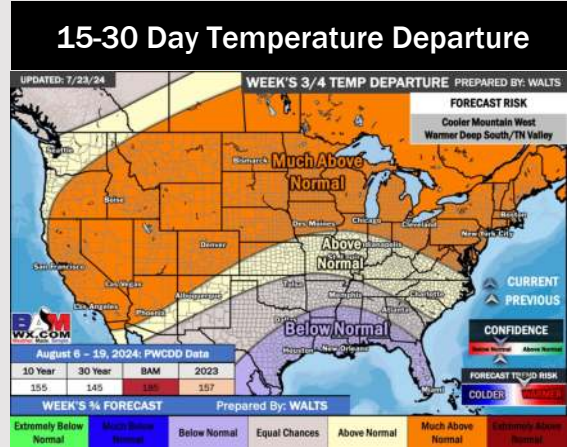
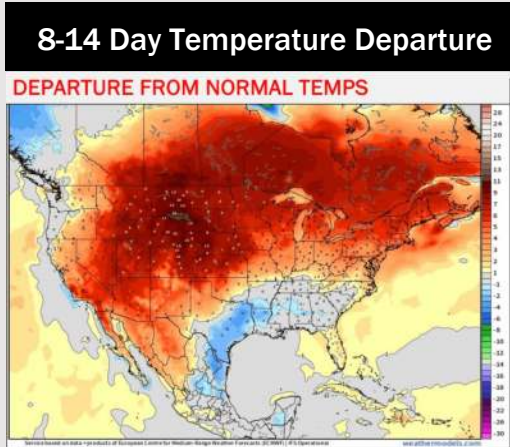
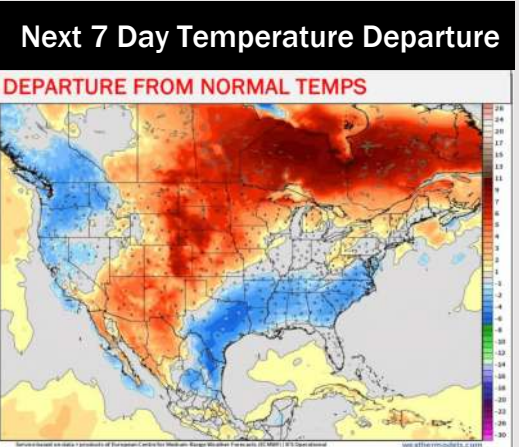


Wind Speed:
1 PM CT



High Temps
Saturday

Houston Pilots: 7/25/24



- Temps are expected to be below normal for the week 1 timeframe. Periods of scattered rain/storms will occur daily over the next week. Some could be heavy in nature.
- Above normal precipitation chances are favored for the week 2 timeframe. Below normal temperatures continue for the week 2 timeframe.
- Above normal chances for precipitation and below normal temperatures are favored in the weeks 3/4 timeframe.