

# Houston Pilots Forecast Package

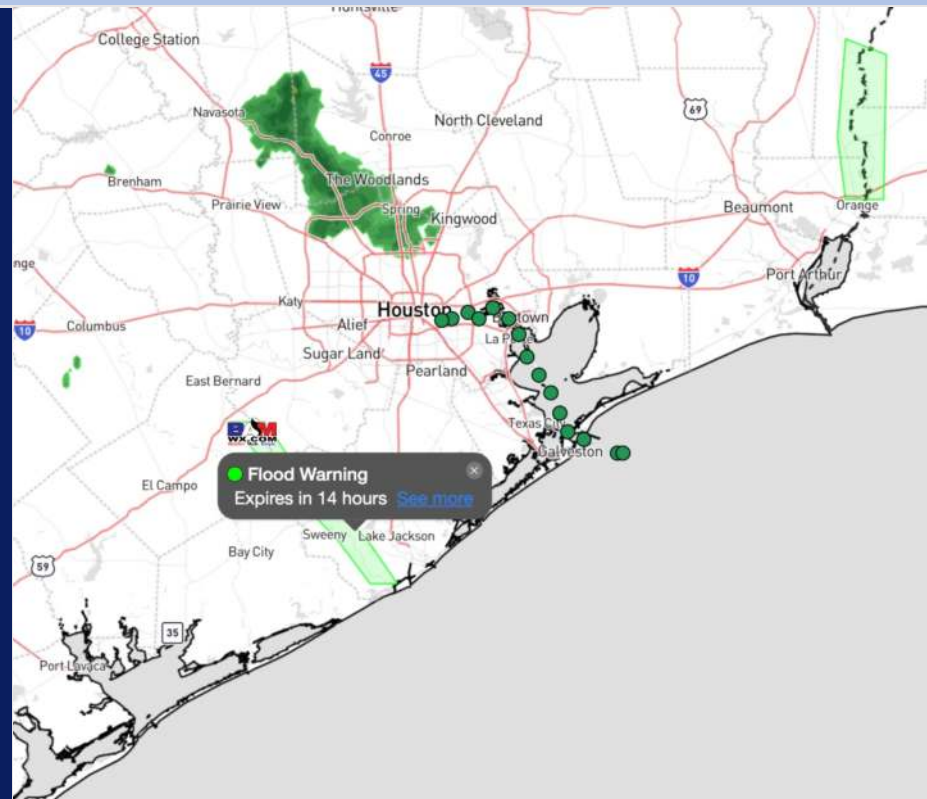


Updated: 10:30 PM CT  
Sunday, July 21, 2024

Forecaster: Xander Lowry

## Weather Headlines

- Scattered downpours/storms will continue to work through the area through the week.
- Sustained winds remain generally calm over the next 72 hours. **A few stronger gusts embedded within storms of 30kts + will be in play.**
- Not anticipating any fog concerns the next few days.



Current Radar: 10:31 PM CT



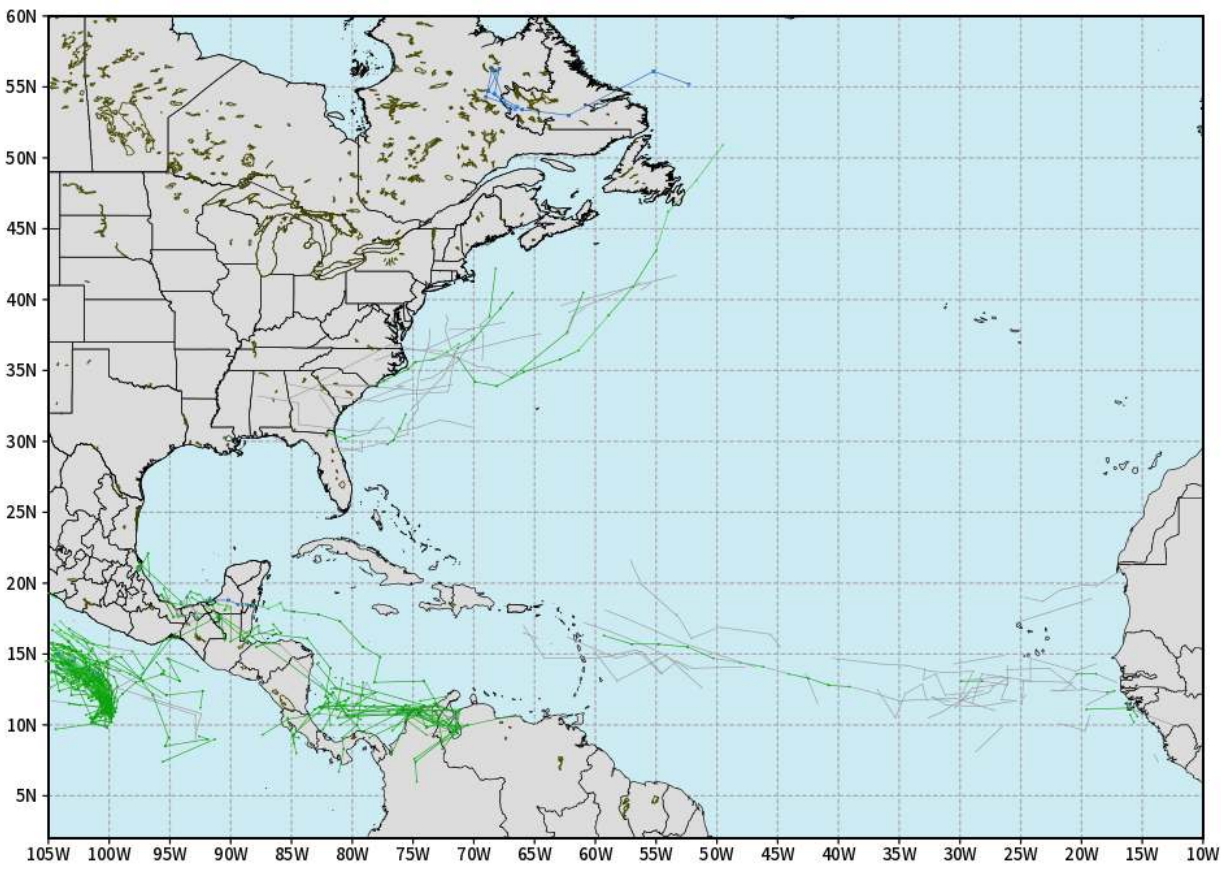
As always, please do not hesitate to reach out to us with any forecast questions via the chat option on Clarity or our on-call number, **(317)-560-8122** press **1** for forecast questions.

# Houston Pilots Tropical Update

## European Model Next 10 Days - Tropical Tracks

ECMWF ATLANTIC EPS Cyclone Locations --> Next [10-days]  
INIT: 12Z21JUL2024 --> UNTIL 12Z31JUL2024

o-o ENSEMBLE MEAN  
o-o 1000 - 1010 hPa  
o-o 980 - 999 hPa  
o-o 960 - 979 hPa  
o-o 950 - 959 hPa  
o-o < 950 hPa



[weathermodels.com](http://weathermodels.com)

Not in favor of any tropical threats over the next 10 days to the HOU area.

We're watching the potential for tropical development in mid August as pattern drivers are indicative of some development. It is still too far out for many details, but we will update as needed.

# Houston Pilots Visibility Chart (miles)



Time	Sun 11pm	Mon 12am	Mon 1am	Mon 2am	Mon 3am	Mon 4am	Mon 5am	Mon 6am	Mon 7am	Mon 8am	Mon 9am	Mon 10am	Mon 11am	Mon 12pm	Mon 1pm	Mon 2pm	Mon 3pm	Mon 4pm	Mon 5pm	Mon 6pm	Mon 7pm	Mon 8pm	Mon 9pm	Mon 10pm
610 Bridge	10	10	10	10	10	10	10	10	6	9	10	10	10	10	10	10	10	10	10	10	10	9	10	10
Kinder 1	10	10	10	10	10	10	10	10	6	9	10	10	10	10	10	10	10	10	10	10	10	9	10	10
Greens Bayou	10	10	10	10	10	10	10	10	6	10	10	10	10	10	10	10	10	10	10	10	10	9	10	10
Shell Crude	10	10	10	10	10	10	10	10	6	10	10	10	10	10	10	10	10	10	10	10	10	9	10	10
Lynchburg Ferries	10	10	10	10	10	10	10	10	6	10	10	10	10	10	10	10	10	10	10	10	9	9	10	10
Exxon 3	10	10	10	10	10	10	10	10	6	10	10	10	10	10	10	10	10	10	10	10	10	9	10	10
Morgans Point	10	10	10	10	10	10	10	10	6	10	10	10	10	10	10	10	10	10	10	10	10	9	10	10
75/76	10	10	10	10	10	10	10	10	10	10	10	10	10	10	10	10	10	10	10	10	10	10	9	9
63/64	10	10	10	10	10	10	10	10	10	10	10	10	10	10	10	10	10	10	10	10	10	10	9	9
51/52	10	10	10	10	10	10	10	10	10	10	10	10	10	10	10	10	10	10	10	10	10	10	10	10
37/38	10	10	10	10	10	10	10	10	10	10	10	10	10	10	10	10	10	10	10	10	10	10	10	10
25/26	10	10	10	10	10	10	10	10	10	10	10	10	10	10	10	10	10	10	10	10	10	10	10	10
11/12	10	10	10	10	10	10	10	10	10	10	10	10	10	10	10	10	10	9	10	10	10	10	10	10
1 & 2 Bravo	10	10	10	10	10	10	10	10	10	10	10	10	10	9	9	9	9	9	7	7	10	7	10	10

**NOTE: This is automated data that may/may not agree with the official B.A.M. thinking that's found on the daily slides or special visibility report slides. This data should be used as a guide only**



# Houston Pilots Wind Chart



**Example**

Sustained wind 13 Knots  
Gusts 18 Knots  
Wind from the N

WS: 13  
G:18  
N

Time Knots	Sun 11pm	Mon 12am	Mon 1am	Mon 2am	Mon 3am	Mon 4am	Mon 5am	Mon 6am	Mon 7am	Mon 8am	Mon 9am	Mon 10am	Mon 11am	Mon 12pm	Mon 1pm	Mon 2pm	Mon 3pm	Mon 4pm	Mon 5pm	Mon 6pm	Mon 7pm	Mon 8pm	Mon 9pm	Mon 10pm
610 Bridge	3	3	2	2	2	2	2	1	2	2	3	3	4	5	5	5	5	5	5	4	4	3	3	3
	6	5	5	5	5	6	4	4	4	5	6	7	9	10	11	11	11	11	11	9	8	7	6	6
	S	SSW	S	SSW	SW	SSW	SW	SW	SW	WSW	WSW	WSW	WSW	WSW	S	ESE	SE	S	SSW	S	S	S	SSW	SW
Kinder 1	3	2	2	2	2	2	2	1	1	2	3	3	4	5	5	5	5	5	5	4	4	3	3	3
	6	5	5	5	5	5	4	4	4	5	6	7	9	10	11	11	11	11	10	9	7	7	6	6
	S	SSW	SSW	SSW	SW	SW	SW	WSW	SW	WSW	WSW	WSW	WSW	WSW	S	ESE	S	S	S	S	S	S	SSW	SW
Greens Bayou	3	2	2	2	2	2	1	1	1	2	3	3	4	5	5	5	5	5	5	4	4	3	3	3
	6	5	5	4	4	5	4	4	4	5	6	7	9	10	11	11	11	11	10	9	8	7	6	6
	S	S	S	SSW	SW	SW	SW	W	W	WSW	SW	WSW	WSW	SW	SSE	SSW	SSW	SSW	S	S	S	S	SSW	S
Shell Crude	3	2	2	2	2	2	2	1	1	2	3	3	4	5	5	5	5	5	5	4	4	3	3	3
	6	5	5	4	4	5	4	4	4	5	6	7	9	10	11	11	11	11	11	9	8	7	6	6
	S	SSW	SSW	SW	SW	SW	SW	W	W	W	SW	WSW	WSW	SW	SSE	S	SSW	SSW	S	S	S	S	S	S
Anchburg Ferries	2	2	2	1	1	2	1	1	1	1	2	3	4	4	5	5	5	5	5	4	3	3	3	3
	6	4	4	4	4	5	4	4	4	5	6	7	9	10	10	10	11	11	11	9	8	6	6	6
	S	SSW	S	SSW	SW	SW	WSW	W	W	W	SW	WSW	WSW	SW	S	SSW	SSW	SSW	S	S	S	S	S	S
Exxon 3	5	5	5	5	4	5	4	3	3	4	4	5	5	5	7	7	7	7	7	7	6	5	5	5
	7	7	7	6	6	6	6	5	5	6	7	8	9	11	12	13	12	12	11	11	9	9	8	8
	S	S	SSW	SSW	SSW	SW	SW	WSW	WSW	WSW	SW	SW	SW	SSW	SSW	S	SSW	S	S	S	S	S	S	S
Morgans Point	5	5	5	5	5	5	4	4	4	4	4	5	5	5	7	7	7	7	7	7	6	5	5	5
	7	7	7	6	6	6	6	6	6	6	7	8	9	10	11	12	12	12	11	11	9	9	8	8
	SSW	SSW	SSW	SW	SW	WSW	W	WNW	WNW	W	WSW	WSW	SW	SSW	S	S	S	SSW	S	S	S	S	S	S
75/76	6	6	6	5	5	5	5	5	5	5	5	5	5	5	7	7	7	7	7	7	7	7	7	7
	8	8	8	8	8	8	8	7	7	7	8	9	10	11	12	12	12	12	11	11	10	10	9	9
	SSW	SSW	SSW	SW	SW	SW	WSW	W	WSW	W	SW	SW	SSW	SSW	S	S	S	S	S	S	S	S	SSW	SSW
63/64	6	6	6	6	6	6	5	5	5	5	5	5	5	5	6	7	7	7	7	7	7	7	7	7
	9	8	8	8	8	8	8	8	8	8	8	9	10	11	11	12	11	11	11	11	10	10	9	9
	SSW	SSW	SSW	SW	SW	SW	WSW	W	WSW	W	SW	SW	SSW	SSW	S	S	S	S	S	S	S	S	SSW	SSW
51/52	6	6	6	6	6	6	6	5	5	5	5	5	5	6	6	6	7	7	7	7	7	7	7	7
	9	9	9	9	9	9	9	8	8	8	9	10	10	11	11	12	11	11	11	11	10	10	9	10
	SSW	SSW	SSW	SSW	SW	SW	WSW	WSW	W	W	WSW	SW	SW	SSW	S	S	S	S	S	S	S	S	SSW	S
37/38	7	7	7	6	7	7	6	6	6	5	6	6	6	6	6	6	7	7	7	7	7	7	7	7
	9	9	9	9	10	10	9	9	9	9	10	10	10	11	11	11	11	11	11	11	10	10	9	10
	SSW	SSW	SSW	SSW	SW	SW	WSW	WSW	W	W	WSW	SW	SW	SSW	S	S	SSW	S	S	SSW	S	S	SSW	S
25/26	7	7	7	7	7	7	6	6	6	6	6	6	6	6	7	7	7	7	7	7	7	6	6	7
	9	10	10	10	10	10	10	9	9	9	10	10	10	11	11	11	11	11	11	11	10	10	9	10
	SSW	SSW	SSW	SSW	SW	SW	WSW	WSW	WSW	WSW	WSW	SW	SW	SSW	S	SSW	SSW	S	S	SSW	S	S	S	S
11/12	6	6	6	6	6	6	6	5	5	5	5	6	6	6	7	7	7	7	7	7	6	6	5	6
	9	10	10	10	10	10	10	10	9	9	10	10	10	11	11	11	11	11	11	11	10	10	9	10
	SSW	SSW	SSW	SSW	SW	SW	WSW	WSW	WSW	WSW	WSW	SW	SW	SSW	S	SSW	SSW	SSW	S	S	SSW	S	S	S
1 & 2 Bravo	7	7	7	8	8	8	8	7	7	7	7	7	7	7	7	7	7	7	7	7	7	7	7	7
	11	11	11	12	12	12	12	12	11	11	11	11	11	11	11	11	11	11	11	11	10	10	10	11
	SSW	SSW	SSW	SSW	SSW	SW	SW	WSW	WSW	WSW	WSW	WSW	SW	SW	SSW	SSW	SSW	S	SSW	S	S	S	S	S

**NOTE: This is automated data that may/may not agree with the official BAM thinking that's found on the daily slides. This data should be used as a guide only.**

# Houston Pilots: MON. 7/22/2024



## Forecast Discussion

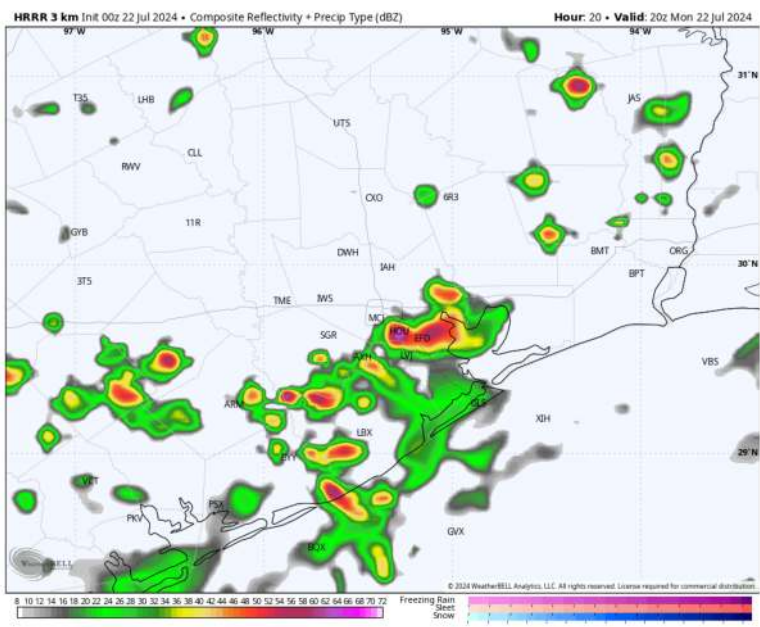
**Precip:** Scattered (30%) thunderstorms will be possible near the boarding station from 7AM – 1PM. From 1PM to 7PM scattered (40%) will be possible for all stations. Light showers can linger throughout the rest of night after 7PM. **Lightning, hail, and 35-40 kts wind gusts will be possible!**

**Wind:** Winds will be out of the southwest through 12 PM before shifting out of the S through the remainder of the day. **N of Morgan's Point:** Winds at 5 - 10 kts through the entire day . **S of Morgan's Point:** Winds at 7 - 12 kts through the entire day.

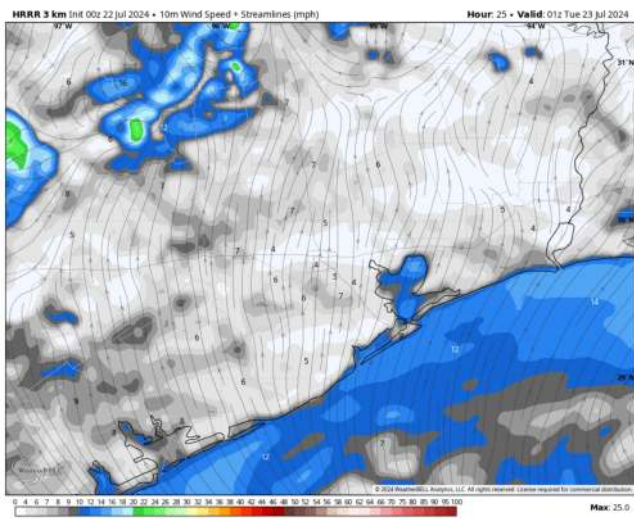
**High Temps:** **N of Morgan's Point:** Low 90s F. **S of Morgan's Point:** Upper 80s F.

**Visibility:** Fog is not favored for today; however, lowered visibilities are possible in heavy downpours.

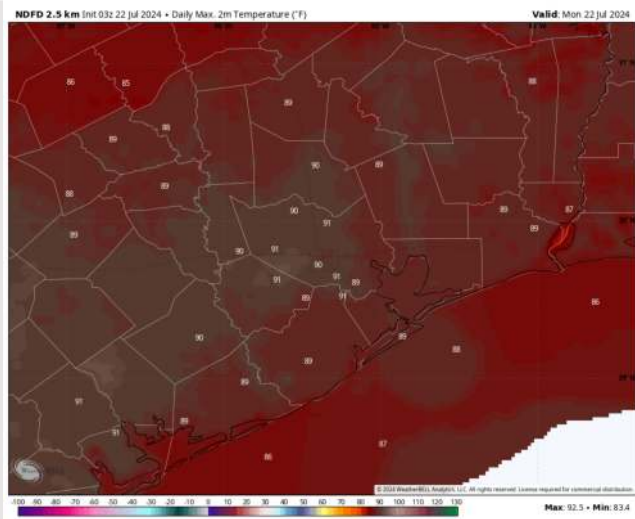
## Precip Image: 3 PM CT



Wind Speed:  
8 PM CT



High Temps  
Today





# Houston Pilots: TUE. 7/23/2024



## Forecast Discussion

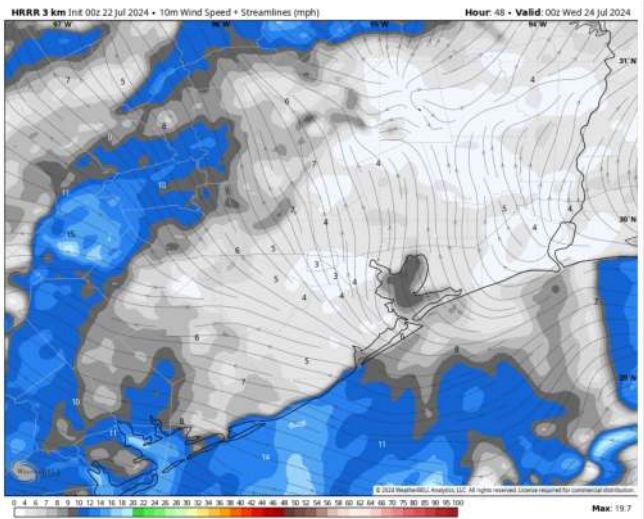
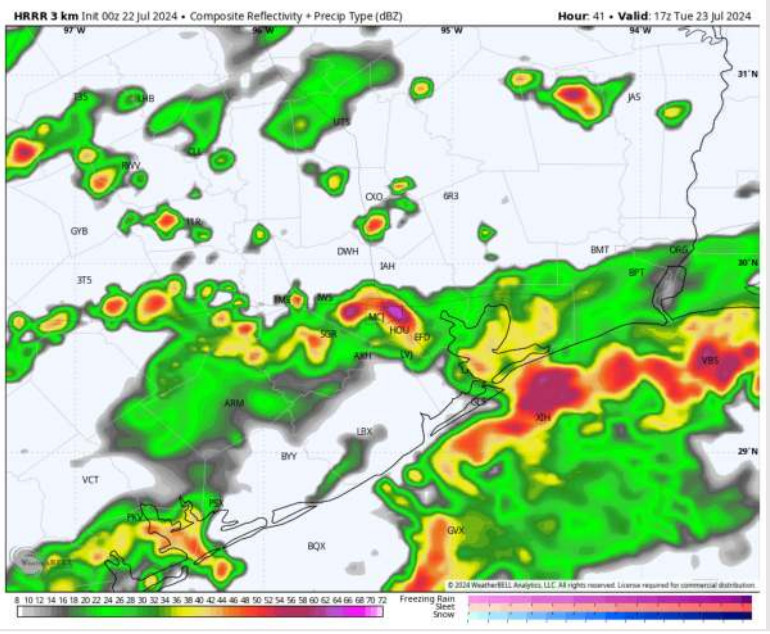
**Precip:** Dry conditions favored throughout the morning before widespread rain thunderstorms (80%) beginning at 12PM and continuing through 9PM. Light scattered (30%) showers will linger throughout the rest of the evening after 9PM. **Lightning, hail, and 35-40 kt wind gusts will be possible!**

**Wind:** Winds will be variable out of the SW/S until 3 PM, as they will shift out of the SE and stay there the rest of the day. **N of Morgan's Point:** Winds consistently at 2 – 6 kts. **S of Morgan's Point:** Winds at 6 – 11 kts throughout the day on Tuesday.

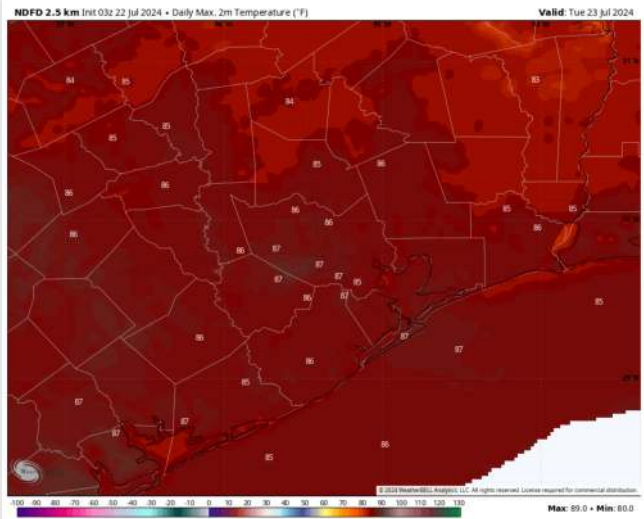
**High Temps:** **N of Morgan's Point:** Upper 80s F. **S of Morgan's Point:** Mid-to-Upper 80s F.

**Visibility:** Not anticipating any fog concerns for Tuesday. However, lowered visibilities are possible in heavy downpours.

## Precip Image: 12 PM CT



Wind Speed  
7 PM CT



High Temps  
Tuesday

# Houston Pilots: WED. 7/24/2024



## Forecast Discussion

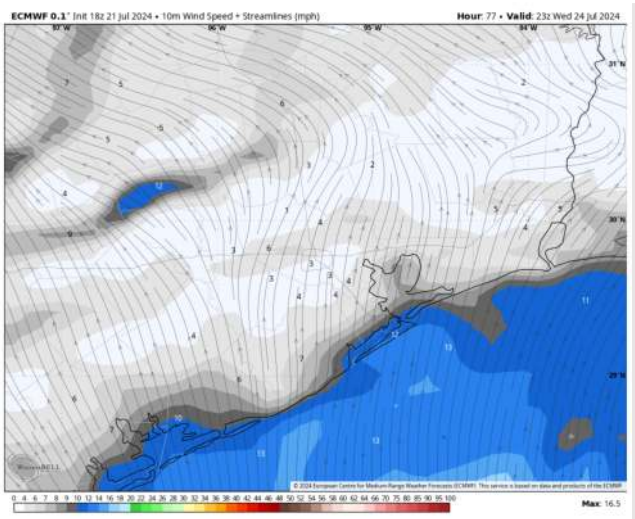
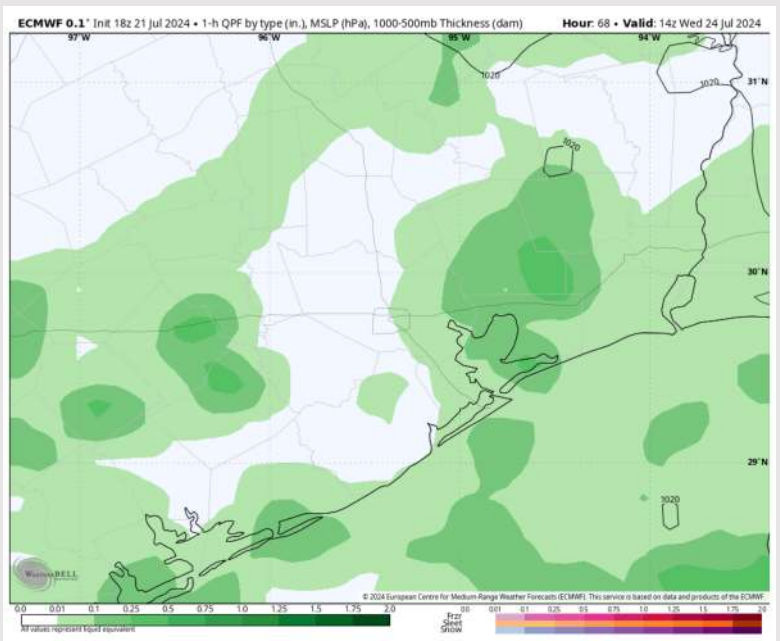
**Precip:** Widespread (80%) showers/thunderstorms will be possible through 3PM. After 3PM chances will become more scattered (40%) throughout the rest of the day WED. **Lightning, hail, and 20 – 25 kts wind gusts will be possible for all stations!**

**Wind:** Winds will be generally out of the S/SE throughout the day Wednesday. **N of Morgan's Point:** Winds will be at 3 – 8 kts for the entire day. **S of Morgan's Point:** Favoring winds at 5 – 10 kts throughout the day on Wednesday.

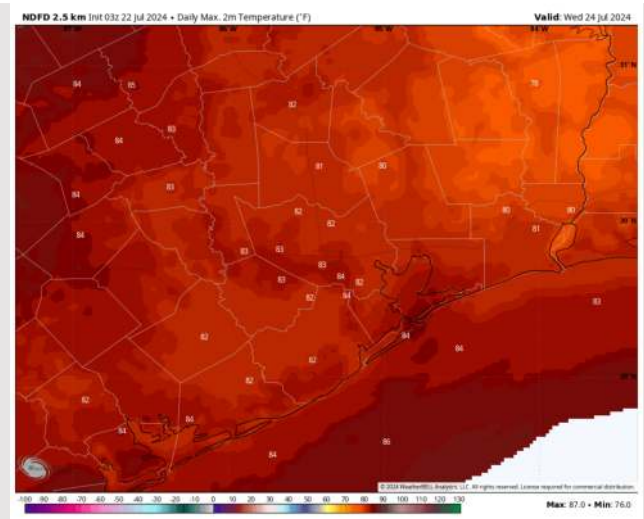
**High Temps:** **N of Morgan's Point:** Mid-Low 80s F. **S of Morgan's Point:** Mid 80 F.

**Visibility:** Fog is not favored Wednesday; however, lowered visibilities are possible in heavy downpours.

## Precip Image: 9 AM CT



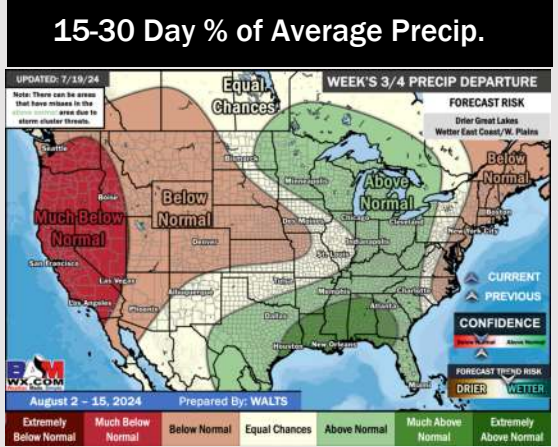
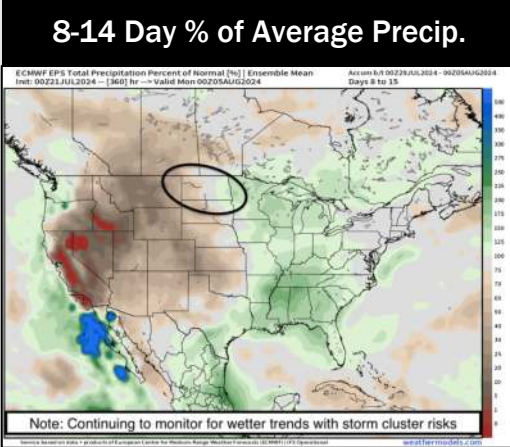
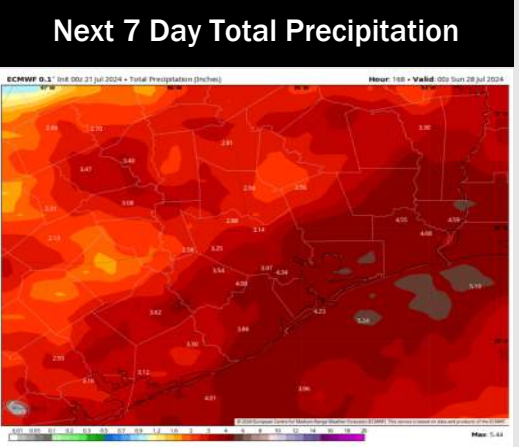
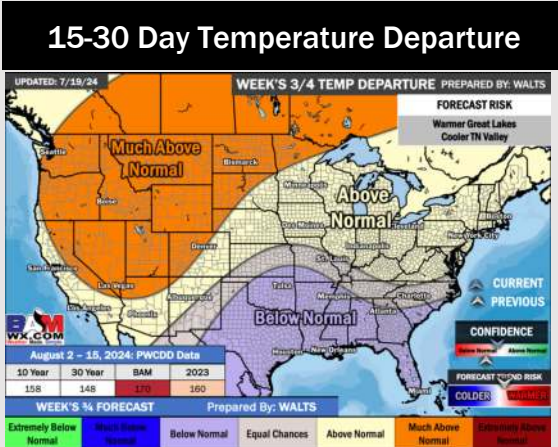
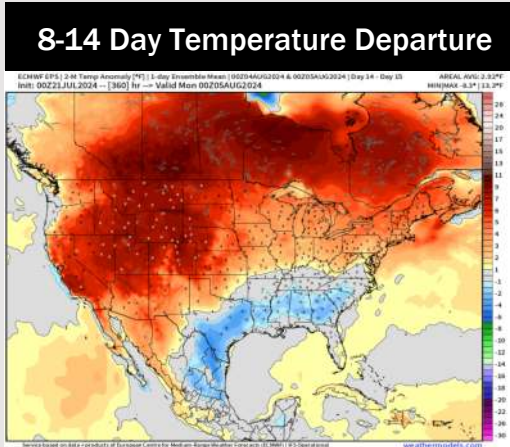
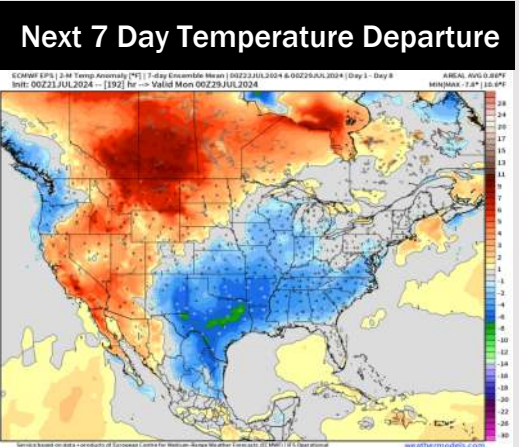
Wind Speed:  
6 PM CT



High Temps  
Wednesday



# Houston Pilots: 7/20/24



- Temps are expected to be below normal for the week 1 timeframe. Periods of scattered rain/storms will occur daily over the next week.
- Above normal precipitation chances are favored for the week 2 timeframe. Below normal temperatures continue for the week 2 timeframe.
- Above normal chances for precipitation and below normal temperatures are favored in the weeks 3/4 timeframe.