

Houston Pilots Forecast Package

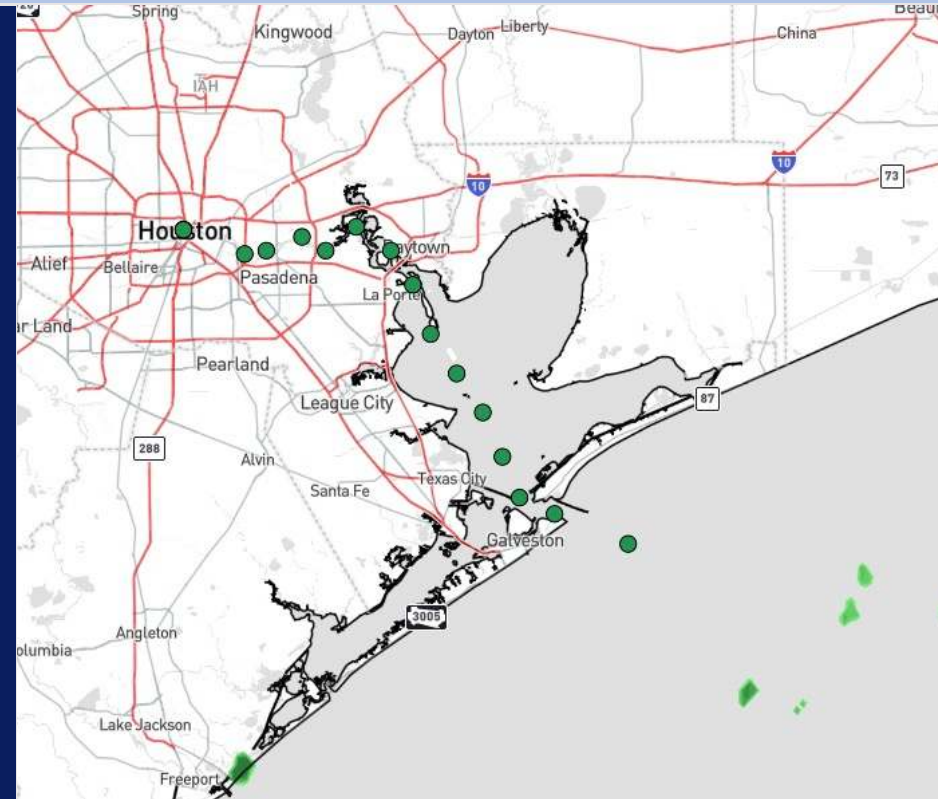


Updated: 12:30 PM CT
Saturday, July 20, 2024

Forecaster: Adam Feick

Weather Headlines

- Scattered downpours/storms will continue to work through the area off and on for the rest of weekend.
- Sustained winds remain generally calm over the next 72 hours. **A few stronger gusts embedded within storms of 25kts + will be in play.**
- Not anticipating any fog concerns the next few days.



Current Radar: 12:30 PM CT



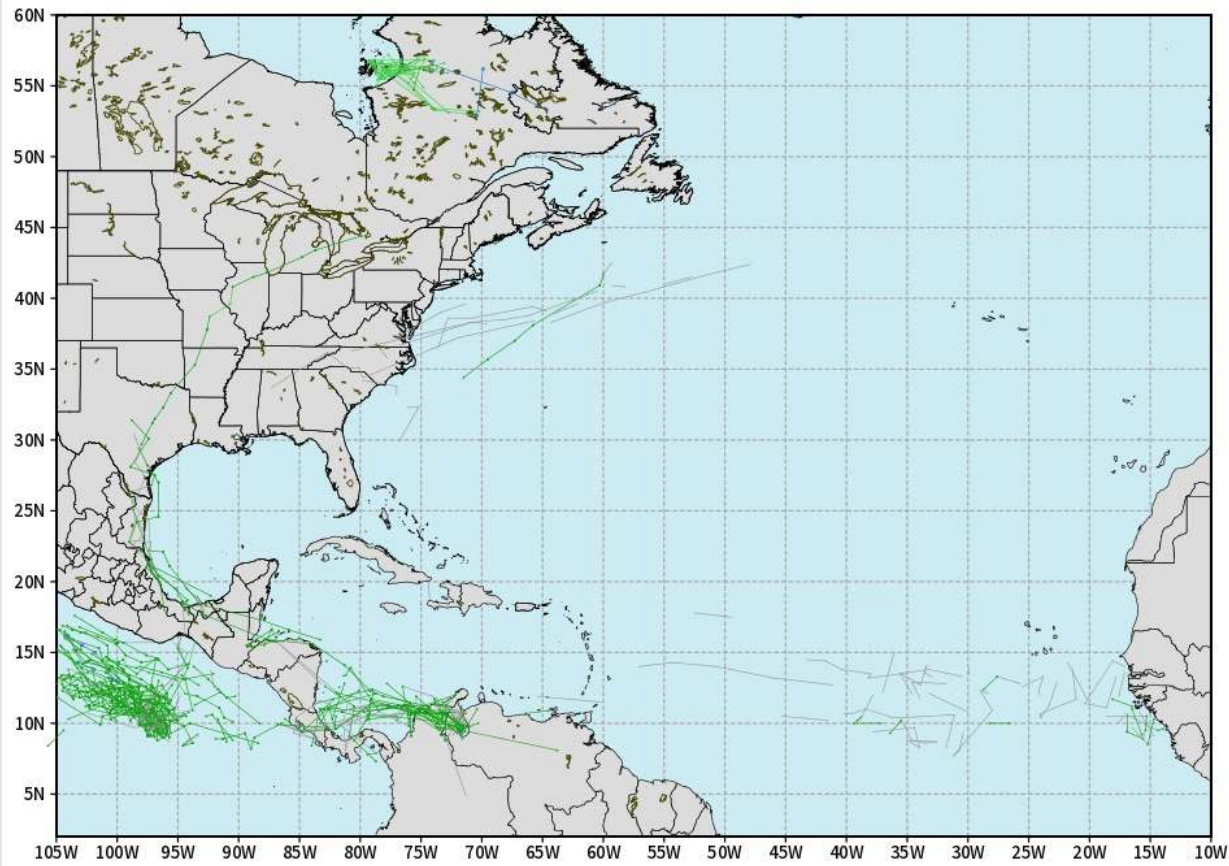
As always, please do not hesitate to reach out to us with any forecast questions via the chat option on Clarity or our on-call number, **(317)-560-8122** press **1** for forecast questions.

Houston Pilots Tropical Update

European Model Next 10 Days - Tropical Tracks

ECMWF ATLANTIC EPS Cyclone Locations --> Next [10-days]
INIT: 00Z20JUL2024 --> UNTIL 00Z30JUL2024

0-0 ENSEMBLE MEAN
0-0 1000 - 1010 hPa
0-0 980 - 999 hPa
0-0 960 - 979 hPa
0-0 950 - 959 hPa
0-0 < 950 hPa



weathermodels.com

Industry: Energy according to our TOS (#65905700170602)

Not in favor of any tropical threats over the next 10 days to the HOU area.

We're watching the potential for tropical development in mid August as pattern drivers are indicative of some development. It is still too far out for many details, but we will update as needed.

Houston Pilots Visibility Chart (miles)



Forecast Confidence

Above Normal

Below Normal

Time	Sat 12pm	Sat 1pm	Sat 2pm	Sat 3pm	Sat 4pm	Sat 5pm	Sat 6pm	Sat 7pm	Sat 8pm	Sat 9pm	Sat 10pm	Sat 11pm	Sun 12am	Sun 1am	Sun 2am	Sun 3am	Sun 4am	Sun 5am	Sun 6am	Sun 7am	Sun 8am	Sun 9am	Sun 10am	Sun 11am
610 Bridge	10	10	10	10	10	10	10	10	10	10	10	10	10	10	10	10	10	10	9	6	10	10	10	10
Kinder 1	10	10	10	10	10	10	10	10	10	10	10	10	10	10	10	10	10	10	9	6	10	10	10	10
Greens Bayou	10	10	10	10	10	10	10	10	10	10	10	10	10	10	10	10	10	10	9	6	10	10	10	10
Shell Crude	10	10	10	10	10	10	10	10	10	10	10	10	10	10	10	10	10	10	9	6	10	10	10	10
Lynchburg Ferries	10	10	10	10	10	10	10	10	10	10	10	10	10	10	10	10	10	10	9	6	10	10	10	10
Exxon 3	10	10	10	10	10	10	10	10	10	10	10	10	10	10	10	10	10	10	9	6	10	10	10	10
Morgans Point	10	10	10	10	10	10	10	10	10	10	10	10	10	10	10	10	10	10	9	6	10	10	10	10
75/76	10	10	10	10	10	10	10	10	10	10	10	10	10	10	10	10	10	10	10	9	10	10	10	10
63/64	10	10	10	10	10	10	10	10	10	10	10	10	10	10	10	10	10	10	10	9	10	10	10	10
51/52	10	10	10	10	10	10	10	10	10	10	10	10	10	10	10	10	10	10	10	10	10	10	10	10
37/38	10	10	10	10	10	10	10	10	10	10	10	10	10	10	10	10	10	10	10	10	10	10	10	10
25/26	10	10	10	10	10	10	10	10	10	10	10	10	10	10	10	10	10	10	10	10	10	10	10	10
11/12	10	10	10	10	10	10	10	10	10	10	10	10	10	10	10	10	10	10	10	10	10	10	10	10
1 & 2 Bravo	10	10	10	10	10	10	10	10	10	10	10	10	10	10	10	10	10	10	10	9	9	10	7	10

NOTE: This is automated data that may/may not agree with the official BAM thinking that's found on the daily slides or special visibility report slides. This data should be used as a guide only

Houston Pilots Wind Chart



Forecast Confidence



Example

Sustained wind 13 Knots
Gusts 18 Knots
Wind from the N

WS: 13
G:18
N

Time Knots	Sat 12pm	Sat 1pm	Sat 2pm	Sat 3pm	Sat 4pm	Sat 5pm	Sat 6pm	Sat 7pm	Sat 8pm	Sat 9pm	Sat 10pm	Sat 11pm	Sun 12am	Sun 1am	Sun 2am	Sun 3am	Sun 4am	Sun 5am	Sun 6am	Sun 7am	Sun 8am	Sun 9am	Sun 10am	Sun 11am
610 Bridge	3	3	3	3	3	4	4	5	4	3	3	2	2	2	1	1	1	1	1	1	1	1	2	2
	6	7	7	8	8	8	9	9	8	7	6	6	5	5	4	4	4	4	4	4	4	4	5	6
	N	N	NE	ENE	SSE	SE	SE	SE	SSE	SSE	SSE	S	S	S	S	SW	SW	SSW	SSW	SSW	WSW	W	W	WSW
Kinder 1	3	3	3	3	3	4	4	5	4	3	3	2	2	2	1	1	1	1	1	1	1	1	2	3
	6	7	7	8	8	8	9	9	8	7	6	5	5	5	4	4	4	3	4	4	4	4	5	6
	N	NNE	ENE	E	SSE	ESE	SE	SSE	SSE	SSE	SSE	S	S	S	S	SSW	SW	SSW	SSW	SSW	SW	W	W	W
Greens Bayou	3	3	3	3	4	4	4	4	3	3	3	2	2	1	1	1	1	1	1	1	1	1	2	3
	6	7	7	8	8	8	9	9	8	7	6	5	5	4	4	4	4	3	3	3	3	4	5	6
	ENE	E	ESE	ESE	ESE	ESE	SE	SSE	S	SSE	SSE	S	S	S	S	SSW	SSW	WSW	SSW	SW	SW	W	W	W
Shell Crude	3	3	3	3	4	4	4	4	3	3	3	2	2	1	1	1	1	1	1	1	1	1	2	3
	6	7	7	7	8	9	9	9	8	6	6	5	4	4	4	4	4	3	3	4	4	4	5	6
	ENE	ENE	E	ESE	ESE	ESE	ESE	SE	S	SSE	S	S	S	SSW	SSW	SSW	SW	SW	WSW	SW	W	W	W	W
Lynchburg Ferries	3	3	3	3	4	4	4	4	3	3	2	2	1	1	1	1	1	1	1	1	1	1	2	3
	6	6	6	7	8	8	9	8	7	6	6	5	4	4	4	4	3	3	3	3	3	4	5	6
	E	E	SE	ESE	SE	ESE	S	SSE	S	SSE	S	S	S	S	S	SSW	SSW	SSW	SSW	WSW	WSW	WSW	W	W
Exxon 3	3	4	5	5	6	6	6	7	6	5	5	5	4	4	4	4	4	3	3	3	3	3	3	3
	7	8	9	10	10	10	10	10	8	7	6	6	6	6	6	6	6	5	5	5	5	6	6	7
	NE	E	ESE	ESE	SE	SE	S	SSE	SSE	S	S	S	S	S	SSW	SSW	SSW	WSW	SW	WSW	WSW	WSW	W	W
Morgans Point	3	4	5	5	6	6	6	7	6	5	5	5	4	4	4	4	4	3	3	3	3	3	3	3
	7	8	8	9	10	10	10	10	8	7	6	6	6	6	6	6	6	5	5	6	6	6	6	7
	ENE	ESE	SE	SE	SE	SE	S	SSE	S	S	S	S	SSW	SSW	SW	SW	WSW	WSW	WSW	W	W	W	W	W
75/76	3	4	5	5	6	6	6	7	7	6	6	5	5	5	5	5	5	5	4	4	4	4	4	3
	7	8	8	9	10	10	10	11	9	8	8	7	7	7	7	7	8	7	7	7	7	7	7	7
	ENE	ESE	SE	SE	SSE	SSE	SSE	SSE	S	S	S	S	S	SSW	SSW	SSW	SSW	SW	SW	WSW	WSW	WSW	W	WSW
63/64	3	3	4	5	5	6	7	6	6	6	6	5	5	5	5	5	5	5	5	5	4	4	4	3
	7	7	8	9	9	10	10	9	8	8	8	8	7	7	7	7	8	7	7	7	7	7	7	7
	ENE	ESE	SE	SE	SSE	SSE	SSE	SSE	S	S	S	S	S	S	SSW	SSW	SSW	SW	SW	WSW	WSW	WSW	W	WNW
51/52	3	3	3	4	5	5	6	6	6	6	6	5	5	5	5	5	5	5	5	5	4	4	4	4
	6	7	8	8	9	9	10	10	9	8	8	8	8	8	8	8	8	8	8	8	7	7	7	7
	NE	E	ESE	SE	SSE	SSE	SSE	S	S	S	S	S	S	SSW	SSW	SSW	SSW	SW	SW	WSW	WSW	WSW	W	WNW
37/38	3	3	3	4	5	5	6	6	6	6	6	6	6	6	6	6	6	5	5	5	5	4	4	4
	6	7	7	8	9	9	9	10	9	8	8	8	8	8	8	8	8	8	8	8	7	7	7	7
	NE	E	ESE	SE	SSE	SSE	S	S	S	S	S	S	S	SSW	SSW	SSW	SSW	SW	SW	WSW	WSW	WSW	W	NW
25/26	3	3	4	4	5	5	6	6	6	6	6	6	6	6	6	6	6	5	5	5	5	4	4	4
	6	7	7	7	8	9	9	10	8	8	9	9	9	9	9	8	8	8	8	8	8	7	7	7
	NE	ENE	ESE	SSE	SSE	SSE	S	S	S	S	S	S	S	S	S	SSW	SSW	SSW	SW	WSW	WSW	WSW	W	WNW
11/12	4	4	4	4	5	5	5	5	5	5	5	5	5	5	5	5	5	5	5	5	4	4	4	5
	6	7	7	8	9	9	9	9	8	8	9	9	9	9	9	9	9	9	9	8	8	8	7	7
	N	SW	SSE	SSE	SSE	S	S	S	S	S	S	S	S	SSW	SSW	SSW	SSW	SW	WSW	WSW	WSW	W	W	W
1 & 2 Bravo	3	3	3	4	5	5	5	6	6	7	7	7	7	7	7	7	7	7	7	7	5	5	5	5
	6	6	6	7	8	9	9	10	9	9	10	10	10	10	10	10	10	10	11	9	9	8	8	8
	N	SSE	SSE	S	S	S	S	S	S	S	S	S	S	S	S	SSW	SSW	SSW	SW	SW	SW	WSW	W	W

NOTE: This is automated data that may/may not agree with the official BAM thinking that's found on the daily slides. This data should be used as a guide only.

Houston Pilots: SAT. 7/20/2024



Forecast Discussion

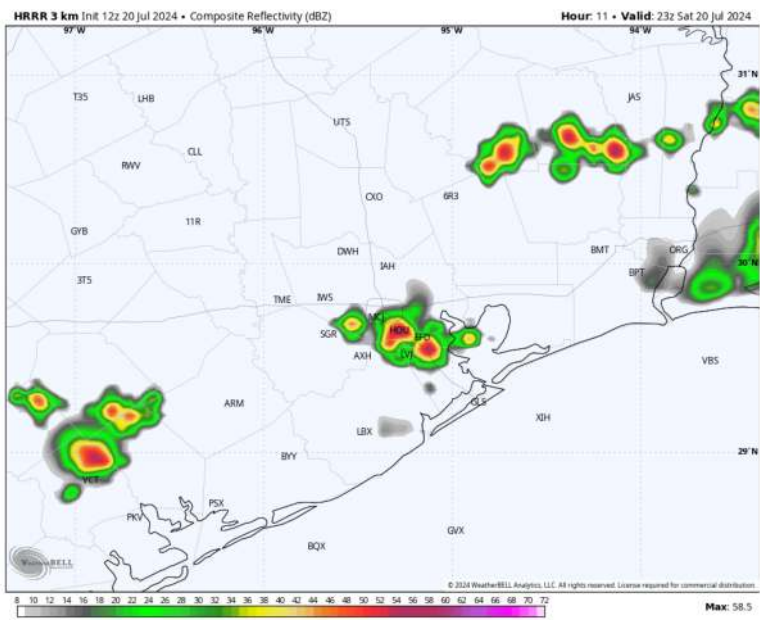
Precip: Isolated showers/storms (30%) in play through 11pm. **Lightning, 35-45 kts wind gusts and hail will be possible for ALL stations!**

Wind: Winds will be variable out of the SE overnight. **N of Morgan's Point:** Winds consistently at 3-8 kts. **S of Morgan's Point:** Winds at 3- 8 kts through 5PM before becoming 7-11 kts overnight.

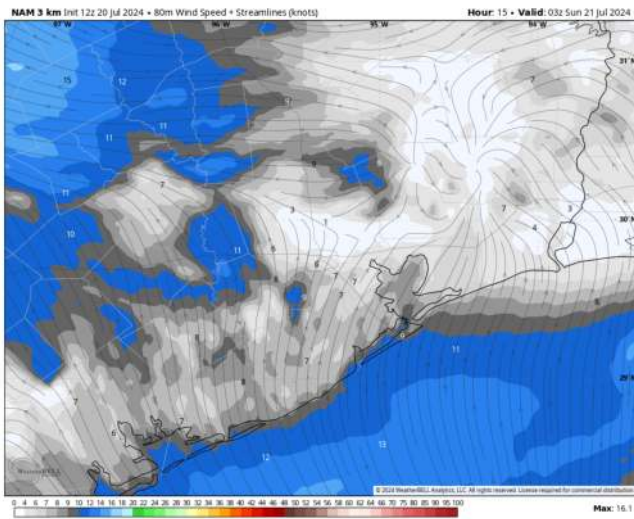
Low Temps: **N of Morgan's Point:** Upper 70s F. **S of Morgan's Point:** Low 80s F.

Visibility: Not anticipating any fog concerns for today. However, lowered visibilities are possible in heavy downpours.

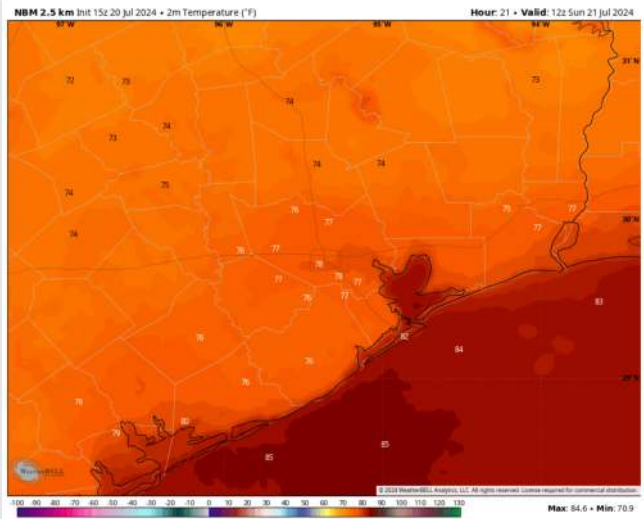
Precip Image: 7 PM CT



Wind Speed
10 PM CT



Low Temps
Tonight



Houston Pilots: SUN. 7/21/2024



Forecast Discussion

Precip: Favoring additional rounds of scattered showers and storms to work in around 4AM, with (40%) for ALL stations through 2PM. Beyond 2PM, chances increase to (60%) for continuous periods scattered storms through 10PM.

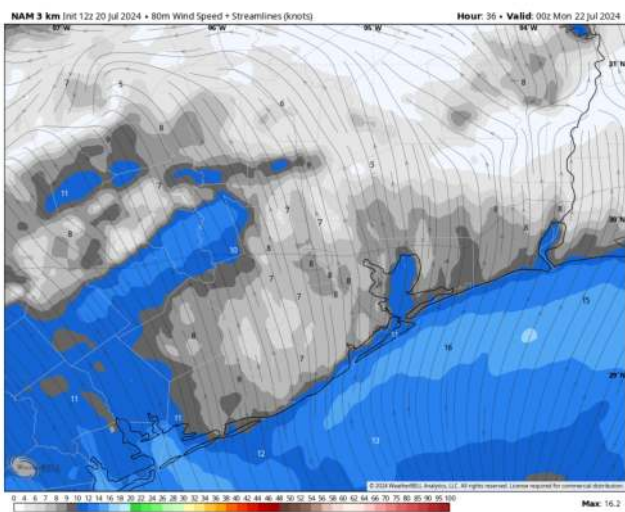
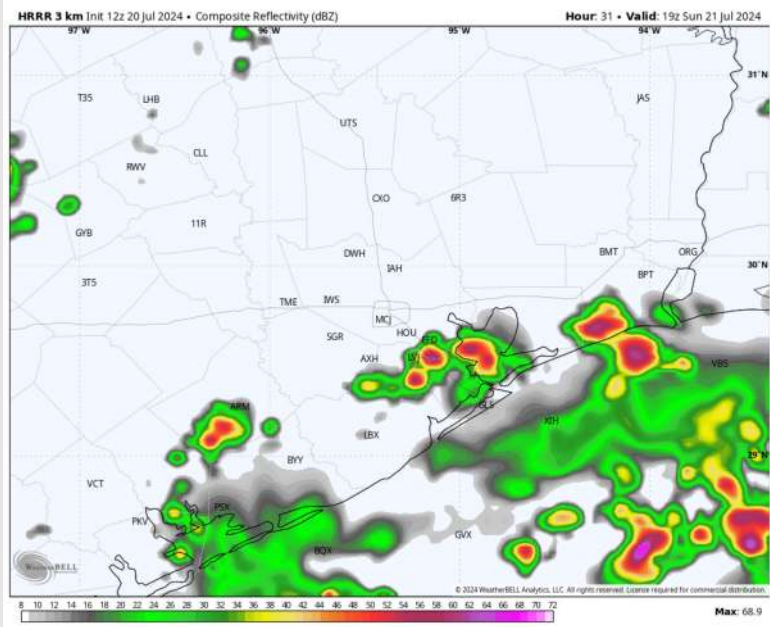
Lightning and hail will be possible for ALL stations!

Wind: Winds will be generally out of the S throughout the day Sunday. **N of Morgan's Point:** Winds will be calmer at 2 – 7 kts for the entire day. **S of Morgan's Point:** Favoring winds at 5 – 8 kts through 5PM before becoming 7 – 11kts for the remainder of the evening. **35-45 kts wind gusts possible for ALL Stations. BEST potential is S. of Morgan's Point**

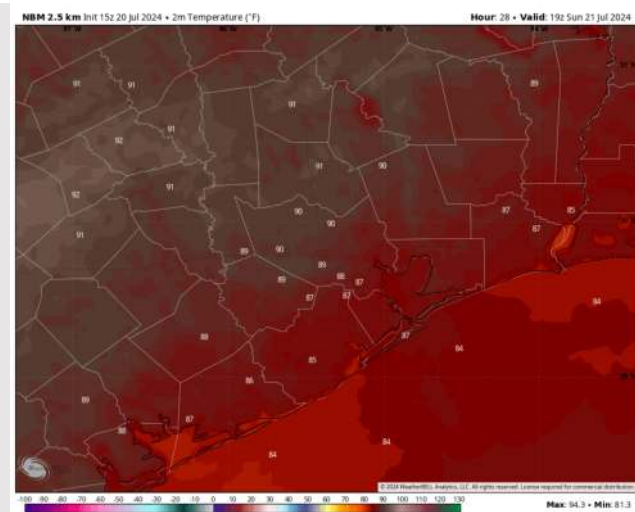
High Temps: **N of Morgan's Point:** Upper 80sF. **S of Morgan's Point:** Mid 80s F.

Visibility: Fog is not favored for Sunday; however, lowered visibilities are possible in heavy downpours.

Precip Image: 2 PM CT



Wind Speed:
7 PM CT



High Temps
Sunday

Houston Pilots: MON. 7/22/2024



Forecast Discussion

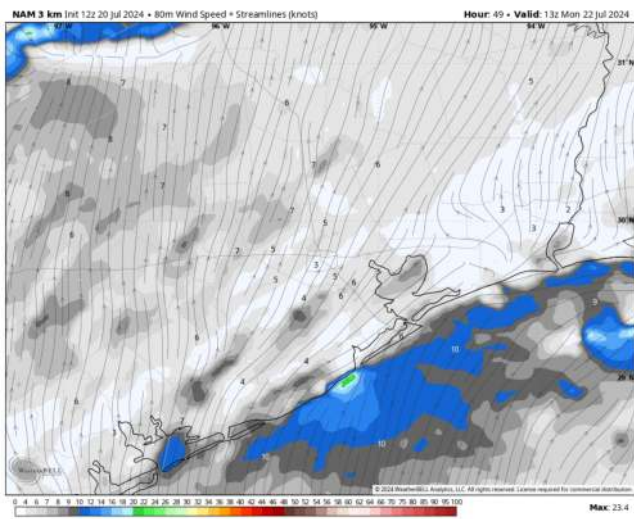
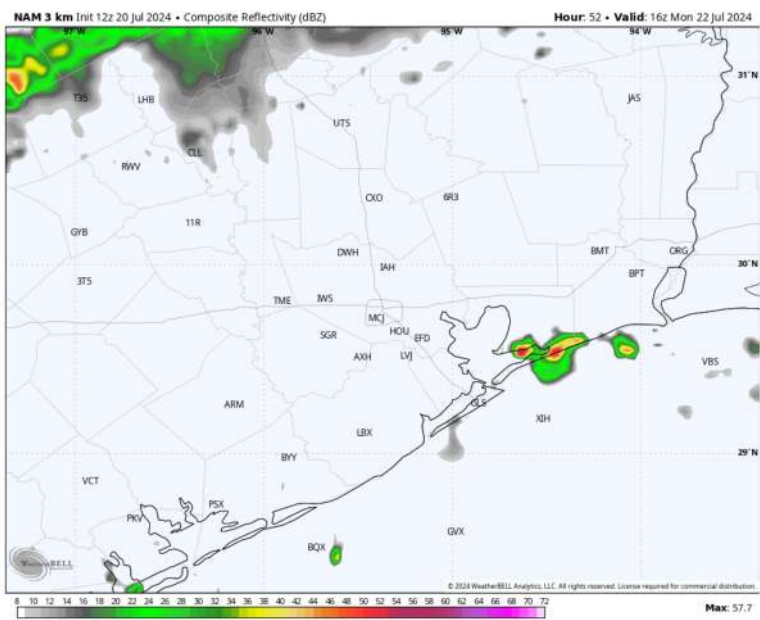
Precip: Isolated showers/storms (30%) will be favored from 3AM – 3PM. Activity will decrease through the evening hours 5PM - 11PM **Lightning and 25-30 kts wind gusts will be possible!**

Wind: Winds will be out of the southwest for the morning before shifting from the south 12PM - 2PM. **N of Morgan's Point:** Winds be at 3 - 8 kts through the entire day . **S of Morgan's Point:** Winds at 8 – 13 kts through the entire day.

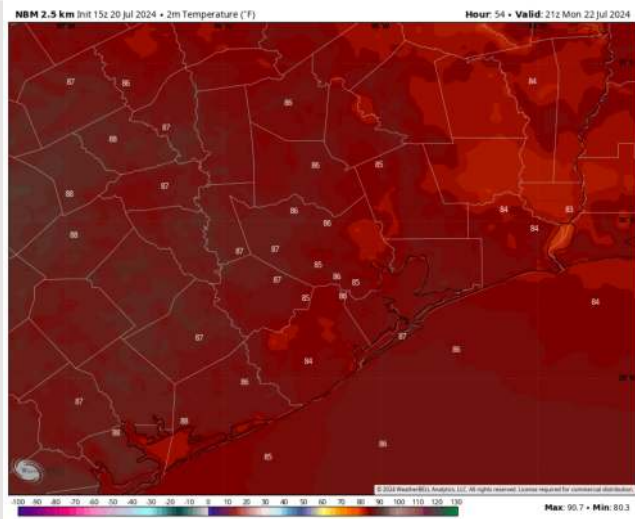
High Temps: **N of Morgan's Point:** Upper 80s F. **S of Morgan's Point:** Mid to Upper 80s F.

Visibility: Fog is not favored for Monday; however, lowered visibilities are possible in heavy downpours.

Precip Image: 7 AM CT



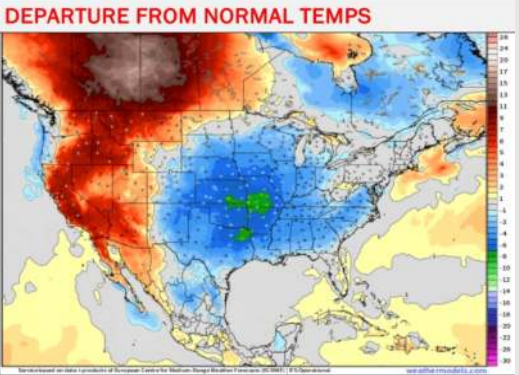
Wind Speed:
8 AM CT



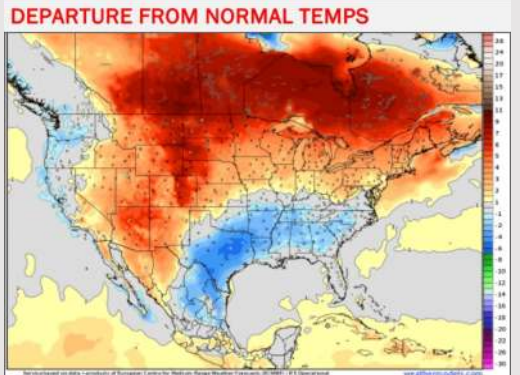
High Temps
Monday

Houston Pilots: 7/20/24

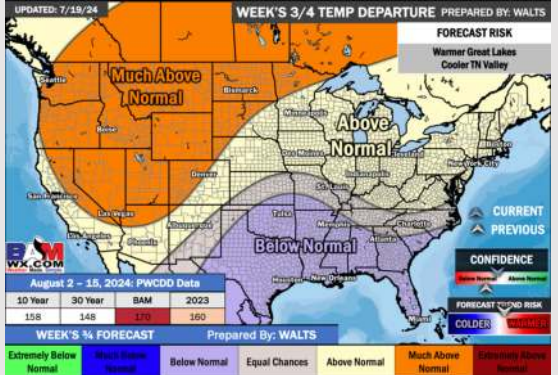
Next 7 Day Temperature Departure



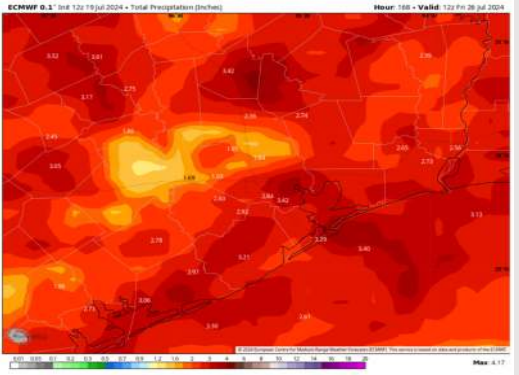
8-14 Day Temperature Departure



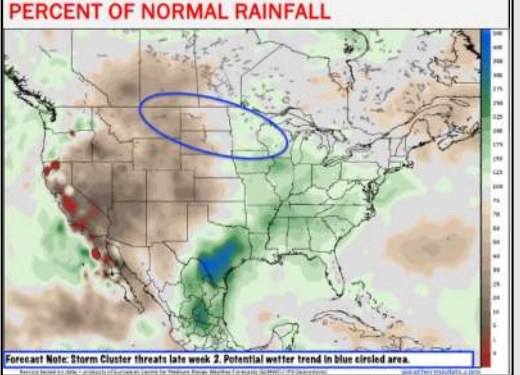
15-30 Day Temperature Departure



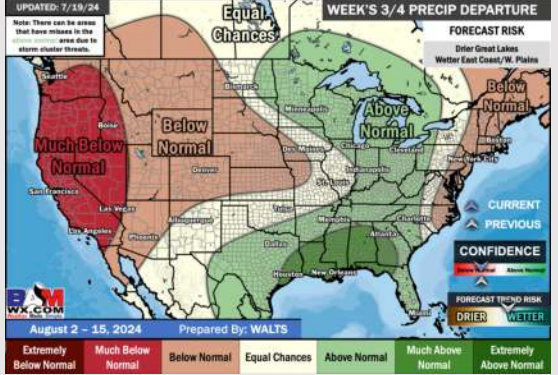
Next 7 Day Total Precipitation



8-14 Day % of Average Precip.



15-30 Day % of Average Precip.



- Temps are expected to be below normal for the week 1 timeframe. Periods of scattered rain/storms will occur daily over the next week.
- Above normal precipitation chances are favored for the week 2 timeframe. Below normal temperatures continue for the week 2 timeframe.
- Above normal chances for precipitation and below normal temperatures are favored in the weeks 3/4 timeframe.