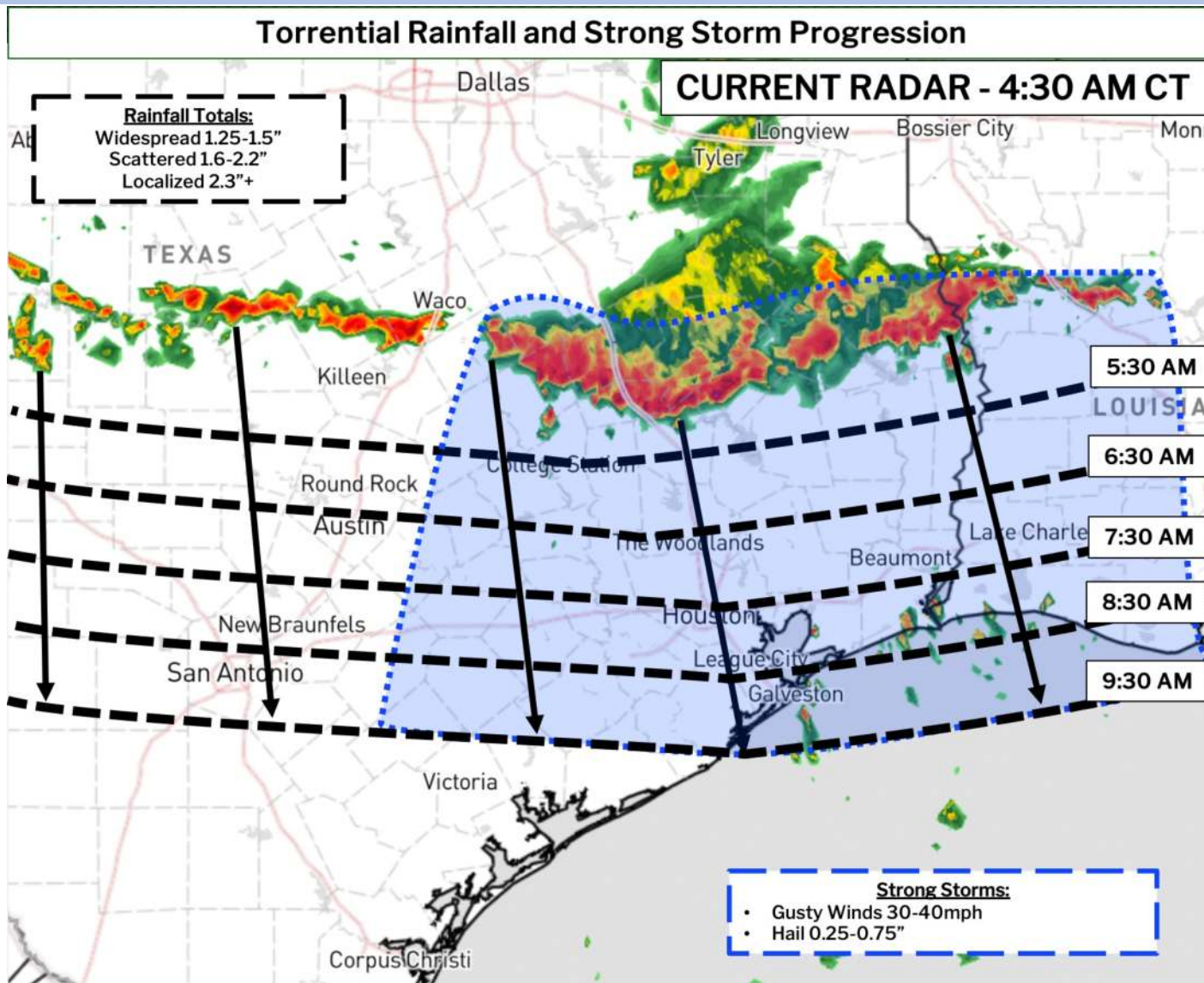


# Strong Storm Timing



# Houston Pilots Forecast Package

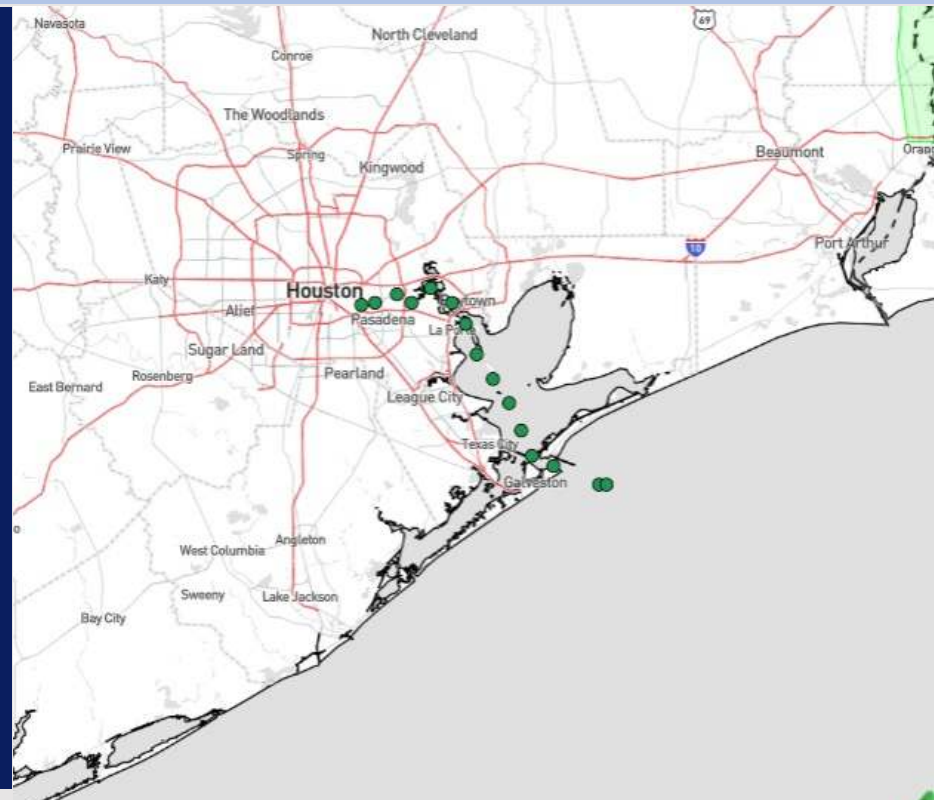


Updated: 10:40 PM CT  
Thursday, July 18, 2024

Forecaster: Xander Lowry

## Weather Headlines

- Scattered showers/storms will continue to work through the area over the next few days.
- Winds remain generally calm over the next 72 hours with sustained winds rarely exceeding 14 kts at all stations
- Not anticipating any fog concerns the next few days.



Current Radar: 10:40 PM CT



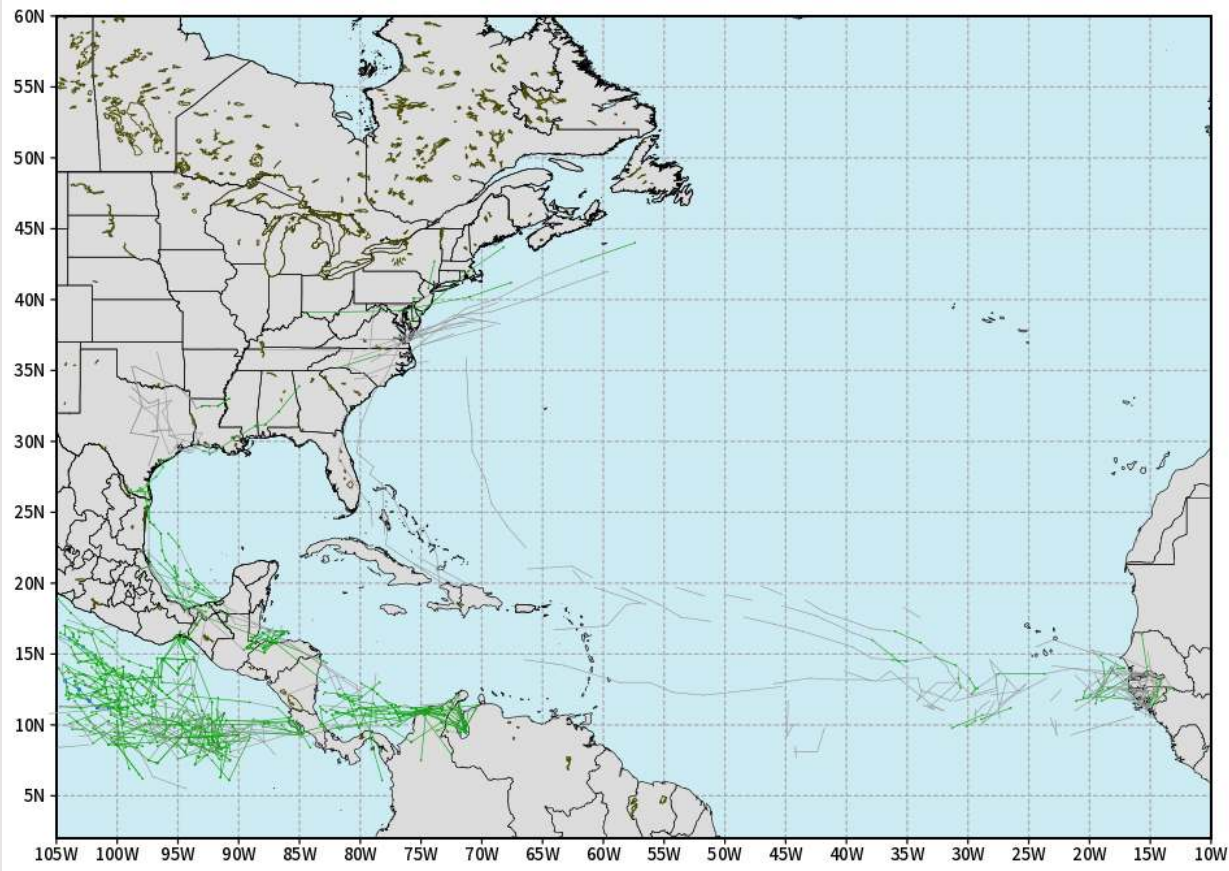
As always, please do not hesitate to reach out to us with any forecast questions via the chat option on Clarity or our on-call number, **(317)-560-8122** press **1** for forecast questions.

# Houston Pilots Tropical Update

## European Model Next 10 Days - Tropical Tracks

ECMWF ATLANTIC EPS Cyclone Locations --> Next [10-days]  
INIT: 12Z17JUL2024 -> UNTIL 12Z27JUL2024

|                     |                   |
|---------------------|-------------------|
| o-o ENSEMBLE MEAN   | o-o 960 - 979 hPa |
| o-o 1000 - 1010 hPa | o-o 950 - 959 hPa |
| o-o 980 - 999 hPa   | o-o < 950 hPa     |



[weathermodels.com](http://weathermodels.com)

Not in favor of any tropical threats over the next 10 days to the HOU area.

We're watching the potential for tropical development in mid-August as pattern drivers are indicative of some development. It is still too far out for many details, but we will update as needed.



# Houston Pilots Visibility Chart (miles)



## Forecast Confidence



| Time              | Wed 11pm | Thu 12am | Thu 1am | Thu 2am | Thu 3am | Thu 4am | Thu 5am | Thu 6am | Thu 7am | Thu 8am | Thu 9am | Thu 10am | Thu 11am | Thu 12pm | Thu 1pm | Thu 2pm | Thu 3pm | Thu 4pm | Thu 5pm | Thu 6pm | Thu 7pm | Thu 8pm | Thu 9pm | Thu 10pm |
|-------------------|----------|----------|---------|---------|---------|---------|---------|---------|---------|---------|---------|----------|----------|----------|---------|---------|---------|---------|---------|---------|---------|---------|---------|----------|
| 610 Bridge        | 10       | 10       | 10      | 10      | 10      | 9       | 9       | 9       | 6       | 10      | 10      | 10       | 10       | 10       | 10      | 10      | 10      | 10      | 10      | 10      | 10      | 10      | 10      | 10       |
| Kinder 1          | 10       | 10       | 10      | 10      | 10      | 9       | 9       | 9       | 6       | 10      | 10      | 10       | 10       | 10       | 10      | 10      | 10      | 10      | 10      | 10      | 10      | 10      | 10      | 10       |
| Greens Bayou      | 10       | 10       | 10      | 10      | 10      | 9       | 9       | 9       | 6       | 10      | 10      | 10       | 10       | 10       | 10      | 10      | 10      | 10      | 10      | 10      | 10      | 10      | 10      | 10       |
| Shell Crude       | 10       | 10       | 10      | 10      | 10      | 9       | 10      | 9       | 6       | 10      | 10      | 10       | 10       | 10       | 10      | 10      | 10      | 10      | 10      | 10      | 10      | 10      | 10      | 10       |
| Lynchburg Ferries | 10       | 10       | 10      | 10      | 10      | 9       | 9       | 9       | 6       | 10      | 10      | 10       | 10       | 10       | 10      | 10      | 10      | 10      | 10      | 10      | 10      | 10      | 10      | 10       |
| Exxon 3           | 10       | 10       | 10      | 10      | 10      | 9       | 10      | 10      | 6       | 10      | 10      | 10       | 10       | 10       | 10      | 10      | 10      | 10      | 10      | 10      | 10      | 10      | 10      | 10       |
| Morgans Point     | 10       | 10       | 10      | 10      | 10      | 10      | 10      | 10      | 6       | 10      | 10      | 10       | 10       | 10       | 10      | 10      | 10      | 10      | 10      | 10      | 10      | 10      | 10      | 10       |
| 75/76             | 10       | 10       | 10      | 10      | 10      | 10      | 10      | 10      | 10      | 10      | 10      | 10       | 10       | 10       | 10      | 10      | 10      | 10      | 10      | 10      | 10      | 10      | 10      | 9        |
| 63/64             | 10       | 10       | 10      | 10      | 10      | 10      | 10      | 10      | 10      | 10      | 10      | 10       | 10       | 10       | 10      | 10      | 10      | 10      | 10      | 10      | 10      | 10      | 10      | 10       |
| 51/52             | 10       | 10       | 10      | 10      | 10      | 10      | 10      | 10      | 10      | 10      | 10      | 10       | 10       | 10       | 10      | 10      | 10      | 10      | 10      | 10      | 10      | 10      | 10      | 10       |
| 37/38             | 10       | 10       | 10      | 10      | 10      | 10      | 10      | 10      | 10      | 10      | 10      | 10       | 10       | 10       | 10      | 10      | 10      | 10      | 10      | 10      | 10      | 10      | 10      | 10       |
| 25/26             | 10       | 10       | 10      | 10      | 10      | 10      | 10      | 10      | 10      | 10      | 10      | 10       | 10       | 10       | 10      | 10      | 10      | 10      | 10      | 10      | 10      | 10      | 10      | 10       |
| 11/12             | 10       | 10       | 10      | 10      | 10      | 10      | 10      | 10      | 10      | 10      | 10      | 10       | 10       | 10       | 10      | 10      | 10      | 10      | 10      | 10      | 10      | 10      | 10      | 10       |
| 1 & 2 Bravo       | 10       | 10       | 10      | 10      | 10      | 10      | 10      | 10      | 10      | 10      | 10      | 10       | 10       | 10       | 10      | 10      | 10      | 10      | 10      | 10      | 10      | 10      | 10      | 10       |

**NOTE: This is automated data that may/may not agree with the official BAM thinking that's found on the daily slides or special visibility report slides. This data should be used as a guide only**

# Houston Pilots Wind Chart



## Forecast Confidence



## Example

Sustained wind 13 Knots  
Gusts 18 Knots  
Wind from the N

WS: 13  
G:18  
N

| Time Knots        | Wed 11pm | Thu 12am | Thu 1am | Thu 2am | Thu 3am | Thu 4am | Thu 5am | Thu 6am | Thu 7am | Thu 8am | Thu 9am | Thu 10am | Thu 11am | Thu 12pm | Thu 1pm | Thu 2pm | Thu 3pm | Thu 4pm | Thu 5pm | Thu 6pm | Thu 7pm | Thu 8pm | Thu 9pm | Thu 10pm |
|-------------------|----------|----------|---------|---------|---------|---------|---------|---------|---------|---------|---------|----------|----------|----------|---------|---------|---------|---------|---------|---------|---------|---------|---------|----------|
| 610 Bridge        | 4        | 3        | 3       | 3       | 3       | 3       | 3       | 3       | 3       | 3       | 3       | 4        | 4        | 4        | 5       | 4       | 4       | 4       | 3       | 3       | 3       | 3       | 3       | 3        |
|                   | 8        | 8        | 7       | 7       | 7       | 7       | 6       | 6       | 6       | 7       | 7       | 8        | 9        | 9        | 10      | 9       | 9       | 9       | 8       | 8       | 7       | 6       | 6       | 6        |
|                   | S        | S        | SSW     | WSW     | SW      | SSW     | WSW     | W       | W       | W       | WNW     | WNW      | WNW      | WNW      | W       | WNW     | WNW     | W       | WNW     | W       | N       | E       | S       | S        |
| Kinder 1          | 4        | 3        | 3       | 3       | 3       | 3       | 3       | 3       | 3       | 3       | 3       | 4        | 4        | 4        | 5       | 4       | 4       | 4       | 3       | 3       | 3       | 3       | 3       | 3        |
|                   | 8        | 7        | 7       | 7       | 7       | 7       | 6       | 6       | 6       | 6       | 7       | 8        | 8        | 9        | 10      | 9       | 9       | 9       | 8       | 8       | 7       | 6       | 6       | 6        |
|                   | S        | S        | SSW     | WSW     | SW      | SSW     | SW      | W       | W       | WNW     | WNW     | WNW      | WNW      | WNW      | W       | NW      | WNW     | W       | WNW     | SW      | N       | E       | SSE     | S        |
| Greens Bayou      | 3        | 3        | 3       | 3       | 3       | 3       | 3       | 3       | 3       | 3       | 3       | 4        | 4        | 4        | 5       | 4       | 4       | 4       | 3       | 3       | 3       | 3       | 3       | 3        |
|                   | 8        | 7        | 7       | 6       | 6       | 6       | 6       | 6       | 6       | 6       | 7       | 8        | 8        | 9        | 10      | 9       | 9       | 9       | 8       | 8       | 7       | 6       | 6       | 6        |
|                   | S        | S        | SSW     | W       | SW      | SSW     | SW      | W       | W       | WNW     | WNW     | WNW      | WNW      | WNW      | W       | WNW     | WNW     | W       | W       | S       | ESE     | SE      | SSE     | S        |
| Shell Crude       | 3        | 3        | 3       | 3       | 3       | 3       | 3       | 3       | 3       | 3       | 3       | 4        | 4        | 4        | 5       | 4       | 4       | 4       | 4       | 3       | 3       | 3       | 3       | 3        |
|                   | 8        | 7        | 7       | 6       | 6       | 6       | 6       | 6       | 6       | 6       | 7       | 8        | 8        | 9        | 9       | 8       | 9       | 8       | 9       | 8       | 8       | 6       | 6       | 6        |
|                   | S        | S        | SSW     | W       | SW      | SSW     | WSW     | W       | W       | WNW     | WNW     | WNW      | WNW      | WNW      | W       | WNW     | WNW     | W       | WSW     | S       | ESE     | SE      | SSE     | S        |
| Lynchburg Ferries | 3        | 3        | 3       | 3       | 3       | 3       | 2       | 2       | 2       | 3       | 3       | 3        | 4        | 4        | 4       | 4       | 4       | 4       | 3       | 3       | 3       | 3       | 2       | 2        |
|                   | 8        | 7        | 7       | 6       | 6       | 6       | 6       | 5       | 6       | 6       | 7       | 8        | 8        | 9        | 9       | 8       | 9       | 8       | 8       | 8       | 7       | 6       | 6       | 6        |
|                   | S        | S        | SSW     | W       | SW      | SSW     | SW      | WSW     | W       | WNW     | WNW     | WNW      | WNW      | WNW      | W       | WNW     | NW      | WNW     | W       | S       | SSE     | S       | SSE     | S        |
| Exxon 3           | 7        | 7        | 7       | 6       | 6       | 6       | 5       | 5       | 5       | 5       | 5       | 5        | 5        | 5        | 5       | 5       | 6       | 5       | 5       | 5       | 5       | 5       | 5       | 5        |
|                   | 10       | 9        | 9       | 9       | 8       | 8       | 8       | 8       | 8       | 8       | 8       | 9        | 9        | 10       | 10      | 10      | 11      | 10      | 10      | 9       | 8       | 8       | 7       | 7        |
|                   | S        | S        | SSW     | WSW     | SW      | SW      | SW      | W       | W       | WNW     | WNW     | WNW      | WNW      | WNW      | WNW     | NW      | W       | S       | S       | SSE     | S       | SSE     | S       | S        |
| Morgans Point     | 7        | 7        | 6       | 6       | 6       | 6       | 5       | 5       | 5       | 5       | 5       | 5        | 5        | 5        | 5       | 5       | 5       | 5       | 5       | 5       | 5       | 5       | 5       | 5        |
|                   | 9        | 9        | 9       | 9       | 8       | 8       | 8       | 8       | 8       | 8       | 8       | 9        | 9        | 9        | 10      | 9       | 10      | 10      | 10      | 9       | 8       | 8       | 7       | 7        |
|                   | S        | SSW      | SSW     | WSW     | WSW     | SW      | SW      | W       | W       | WNW     | WNW     | WNW      | WNW      | WNW      | W       | WNW     | NW      | S       | SSE     | SSE     | SSE     | S       | S       | S        |
| 75/76             | 7        | 7        | 7       | 7       | 7       | 7       | 7       | 6       | 6       | 6       | 6       | 6        | 5        | 5        | 5       | 5       | 5       | 5       | 5       | 5       | 6       | 6       | 6       | 6        |
|                   | 10       | 10       | 10      | 10      | 10      | 10      | 9       | 9       | 9       | 9       | 10      | 10       | 9        | 9        | 10      | 9       | 10      | 10      | 10      | 9       | 9       | 9       | 9       | 9        |
|                   | S        | S        | SSW     | SW      | SW      | SW      | SSW     | WSW     | W       | WNW     | WNW     | WNW      | WNW      | WNW      | W       | WSW     | NNW     | SE      | SSE     | SSE     | SSE     | S       | S       | SSW      |
| 63/64             | 7        | 7        | 7       | 7       | 7       | 7       | 7       | 6       | 6       | 6       | 6       | 6        | 5        | 5        | 5       | 5       | 5       | 5       | 5       | 5       | 6       | 6       | 6       | 6        |
|                   | 10       | 10       | 10      | 10      | 10      | 10      | 9       | 9       | 9       | 9       | 9       | 10       | 9        | 9        | 9       | 8       | 9       | 9       | 9       | 9       | 8       | 9       | 9       | 9        |
|                   | S        | S        | SSW     | SSW     | SW      | SW      | SSW     | WSW     | W       | WNW     | WNW     | WNW      | WNW      | NW       | WNW     | WSW     | W       | ESE     | SSE     | S       | SSE     | S       | S       | SSW      |
| 51/52             | 7        | 7        | 7       | 7       | 7       | 7       | 7       | 6       | 6       | 6       | 6       | 6        | 5        | 5        | 5       | 4       | 4       | 4       | 5       | 5       | 6       | 6       | 6       | 7        |
|                   | 10       | 11       | 11      | 10      | 10      | 10      | 10      | 10      | 10      | 9       | 9       | 9        | 9        | 9        | 9       | 8       | 9       | 9       | 9       | 9       | 9       | 9       | 9       | 9        |
|                   | S        | S        | SSW     | SSW     | SW      | SW      | SW      | WSW     | W       | W       | WNW     | WNW      | WNW      | NW       | WNW     | W       | SSW     | S       | SSE     | S       | S       | S       | SSW     | SSW      |
| 37/38             | 7        | 7        | 7       | 7       | 7       | 7       | 7       | 7       | 7       | 6       | 6       | 6        | 5        | 5        | 5       | 4       | 4       | 5       | 5       | 5       | 6       | 6       | 6       | 7        |
|                   | 10       | 11       | 11      | 11      | 11      | 10      | 10      | 10      | 10      | 9       | 9       | 9        | 9        | 9        | 8       | 8       | 9       | 9       | 9       | 9       | 9       | 9       | 9       | 9        |
|                   | S        | S        | S       | SSW     | SW      | SW      | SW      | WSW     | W       | W       | WNW     | WNW      | WNW      | NW       | WNW     | S       | S       | SSE     | S       | S       | S       | S       | SSW     | SSW      |
| 25/26             | 7        | 7        | 7       | 7       | 7       | 7       | 7       | 6       | 6       | 6       | 6       | 6        | 5        | 5        | 5       | 5       | 5       | 5       | 5       | 6       | 6       | 6       | 6       | 7        |
|                   | 10       | 11       | 11      | 11      | 11      | 10      | 10      | 10      | 10      | 9       | 10      | 9        | 9        | 9        | 8       | 8       | 8       | 9       | 9       | 9       | 9       | 9       | 9       | 9        |
|                   | S        | S        | S       | S       | SW      | SW      | SW      | SW      | WSW     | W       | NNW     | WNW      | WNW      | NW       | NW      | WNW     | S       | SSE     | SSE     | S       | S       | NW      | SSW     | SSW      |
| 11/12             | 6        | 7        | 7       | 7       | 7       | 7       | 6       | 6       | 6       | 5       | 6       | 6        | 5        | 5        | 5       | 5       | 5       | 5       | 6       | 6       | 6       | 5       | 5       | 6        |
|                   | 10       | 10       | 11      | 10      | 10      | 11      | 10      | 10      | 10      | 9       | 9       | 9        | 9        | 9        | 9       | 8       | 9       | 9       | 9       | 9       | 9       | 9       | 9       | 9        |
|                   | S        | S        | S       | S       | SW      | WSW     | SW      | SW      | WSW     | W       | W       | WNW      | WNW      | NW       | WNW     | WNW     | SSW     | SSE     | S       | S       | S       | S       | SW      | S        |
| 1 & 2 Bravo       | 8        | 8        | 8       | 8       | 8       | 8       | 8       | 8       | 8       | 7       | 7       | 7        | 6        | 5        | 5       | 5       | 5       | 5       | 6       | 6       | 6       | 6       | 7       | 7        |
|                   | 11       | 12       | 12      | 12      | 12      | 12      | 12      | 11      | 12      | 11      | 11      | 11       | 10       | 9        | 8       | 8       | 8       | 9       | 10      | 9       | 9       | 10      | 10      | 10       |
|                   | S        | S        | S       | S       | SSW     | SW      | SW      | SW      | SW      | SW      | W       | W        | WNW      | WNW      | WNW     | WNW     | W       | S       | SSW     | S       | S       | S       | SSW     | SSW      |

**NOTE: This is automated data that may/may not agree with the official BAM thinking that's found on the daily slides. This data should be used as a guide only.**

# Houston Pilots: THU. 7/18/2024



## Forecast Discussion

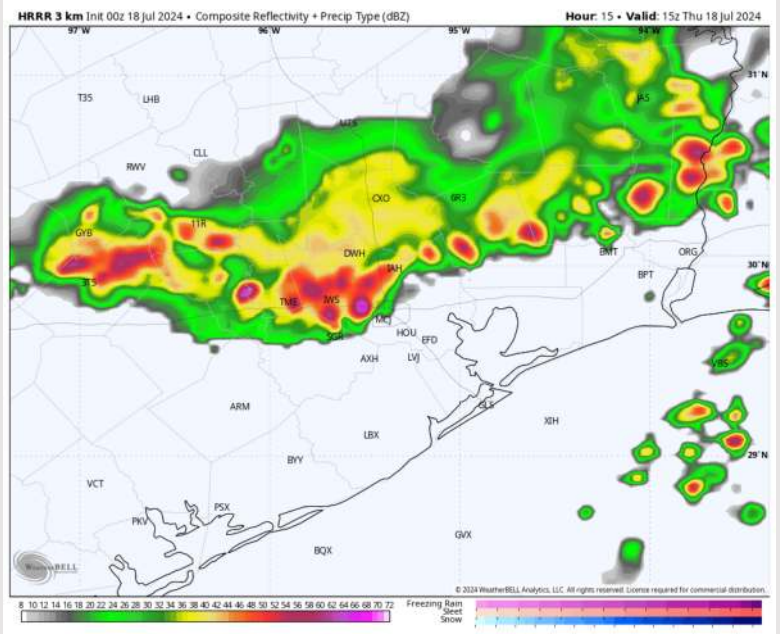
**Precip:** Scattered showers and thunderstorms (60%) will enter the area after 6 AM and will continue through 2 PM. We could see a break in the activity between 2 PM – 6 PM. After 6PM scattered (20-30%) chances will linger throughout the evening. **Lightning, hail, and wind gusts of 40-45 kts will be possible!**

**Wind:** Winds will be variable throughout the majority of the day, with winds shifting to be out of the SW/S by 7PM. **N of Morgan's Point:** Winds be at 2-8 kts for today. **S of Morgan's Point:** Winds at 7-12 kts for THU..

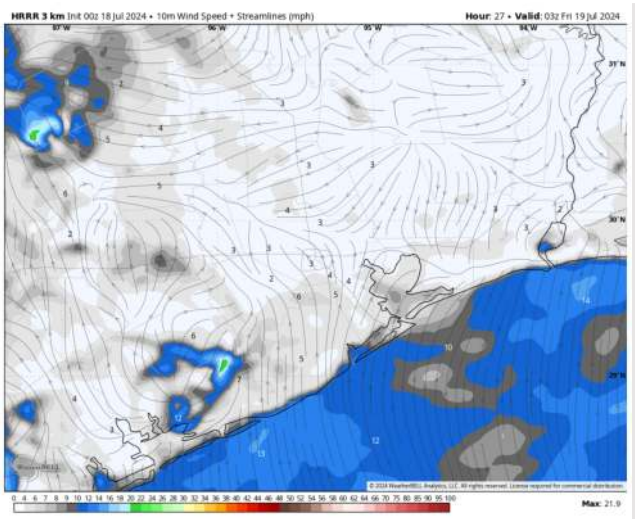
**High Temps:** **N of Morgan's Point:** Low 90s F. **S of Morgan's Point:** Near 90 F.

**Visibility:** Fog is not favored today; however, low visibilities are possible in heavy downpours.

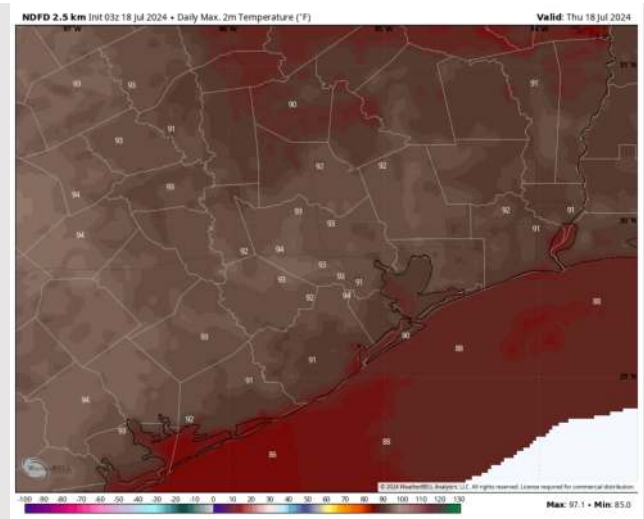
## Precip Image: 10 AM CT



Wind Speed:  
10 PM CT



High Temps  
Today





# Houston Pilots: FRI. 7/19/2024



## Forecast Discussion

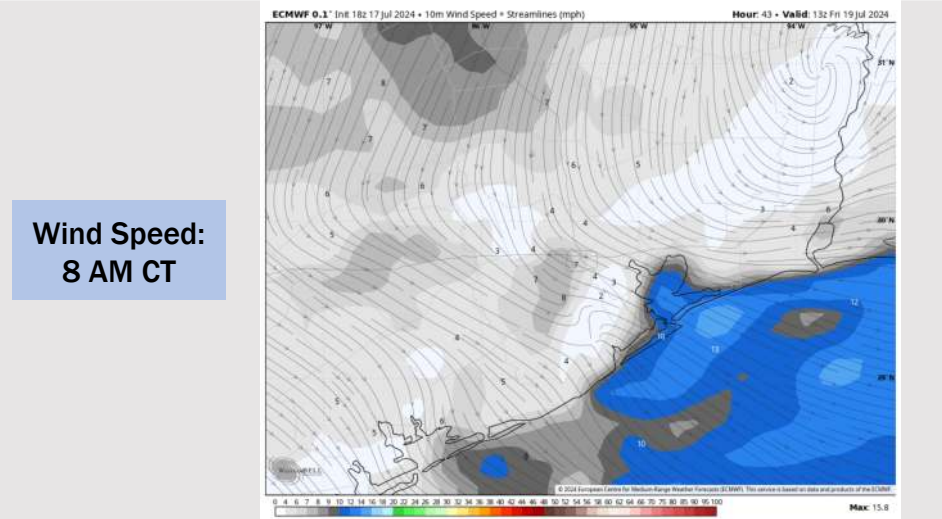
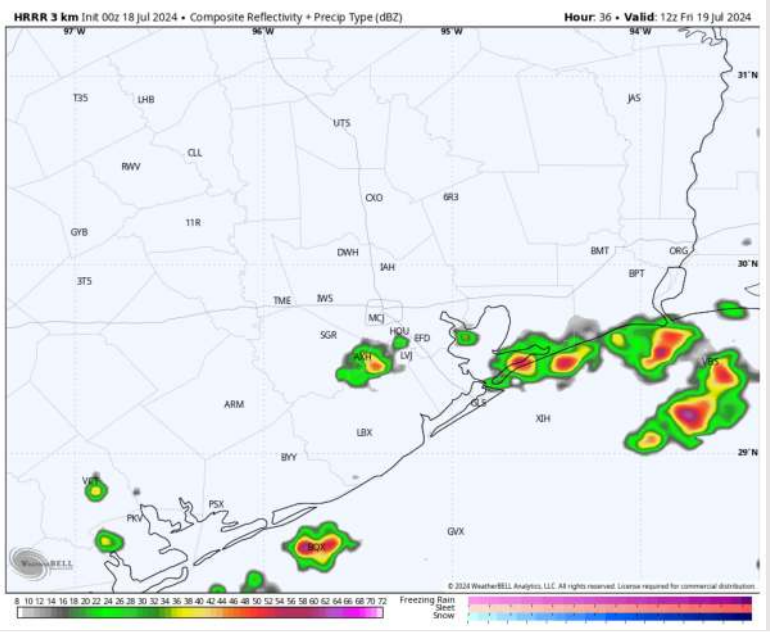
**Precip:** Scattered showers/storms will continue across the area throughout the entire day on FRI (30%), with coverage becoming more hit/miss (10%) and contained mostly to the south after 8 PM.

**Wind:** Winds out of the W/NW throughout the AM, before shifting out of the S/SW by 6 PM and staying there through the remainder of the day. **N of Morgan's Point:** Winds be at 2-7 kts throughout FRI. **S of Morgan's Point:** Winds at 5-10 kts throughout the entire day.

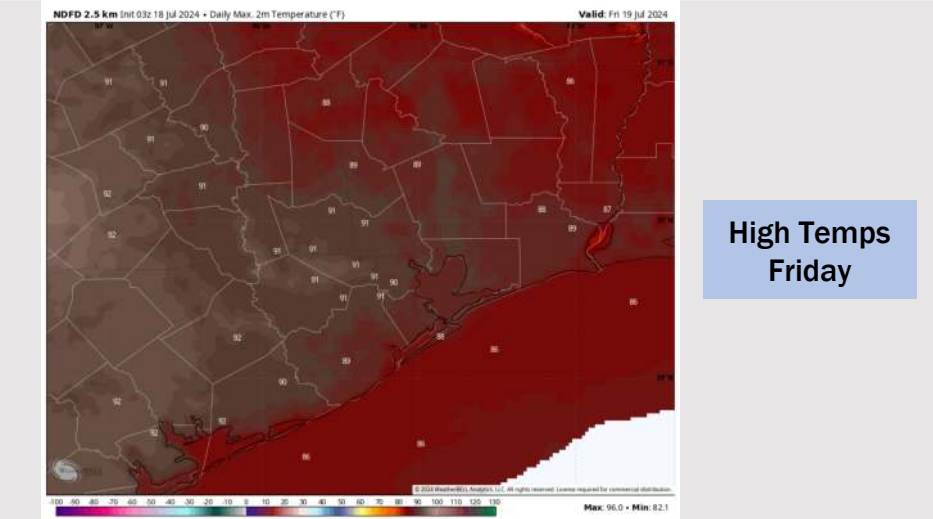
**High Temps:** **N of Morgan's Point:** Low 90 F. **S of Morgan's Point:** Upper 80s F.

**Visibility:** Fog is not favored for Friday; however, low visibilities are possible under heavy downpours.

## Precip Image: 7 AM CT



Wind Speed:  
8 AM CT



High Temps  
Friday

# Houston Pilots: SAT. 7/20/2024



## Forecast Discussion

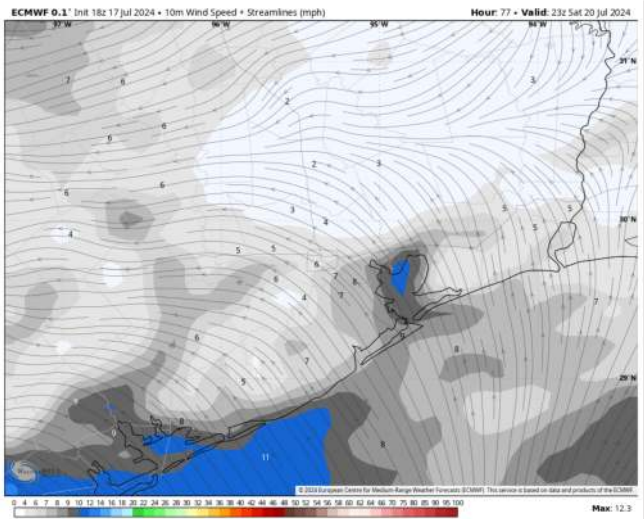
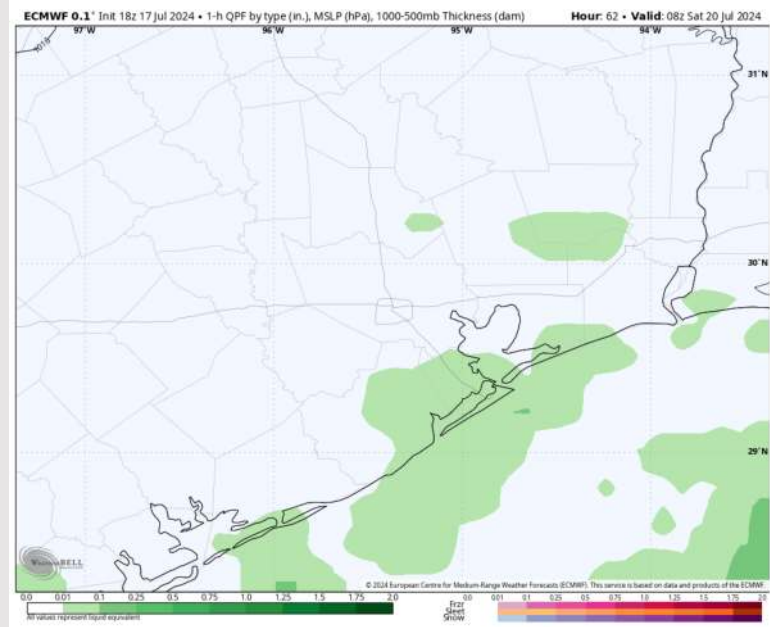
**Precip:** Hit and miss showers/storms (40%) in play through 8 AM. After 8AM, coverage will become more isolated (10%) through 9PM. Favoring dry after 9PM.

**Wind:** Winds will be variable through 6PM, before setting out of the SE/S for the rest of the day. **N of Morgan's Point:** Winds consistently at 2-7 kts through the rest of the day. **S of Morgan's Point:** Winds 4-9 kts throughout Saturday.

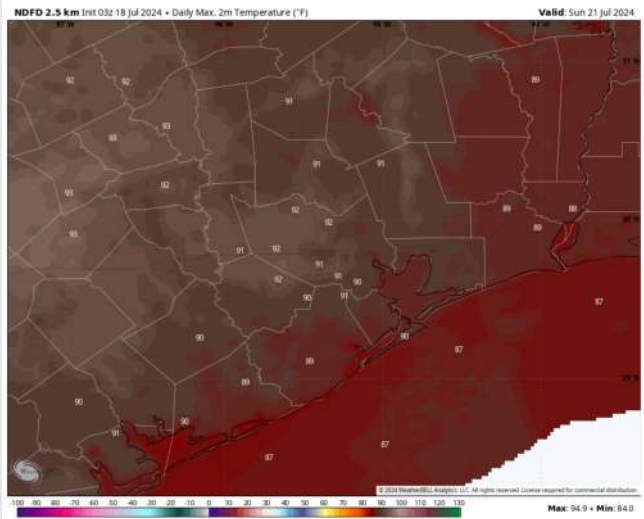
**High Temps:** **N of Morgan's Point:** Lower 90s F. **S of Morgan's Point:** Near 90 F.

**Visibility:** Not anticipating any fog concerns for today.

## Precip Image: 3 AM CT



Wind Speed  
6 PM CT

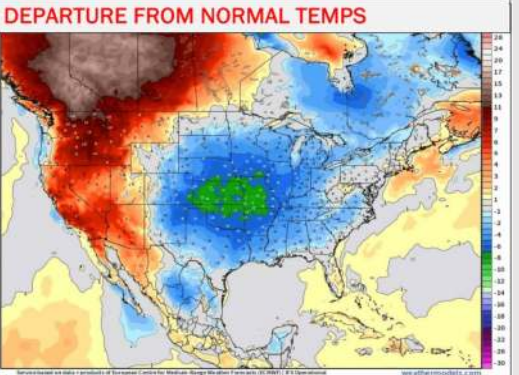


High Temps  
Saturday

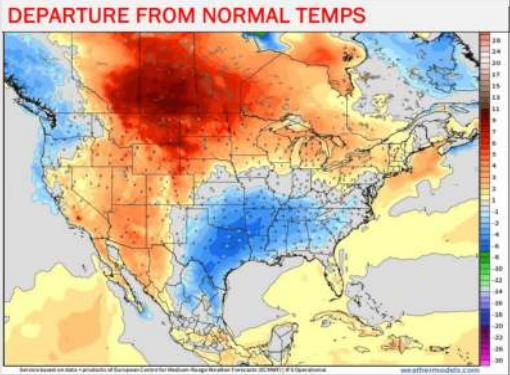


# Houston Pilots: 7/18/24

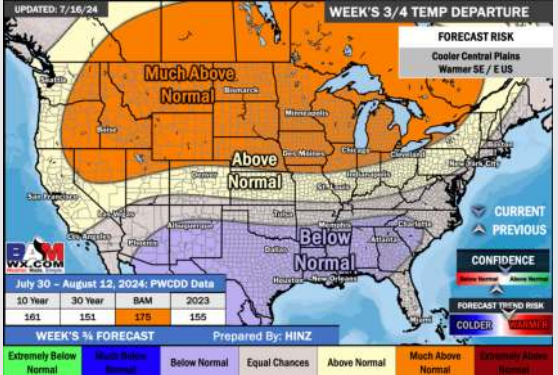
## Next 7 Day Temperature Departure



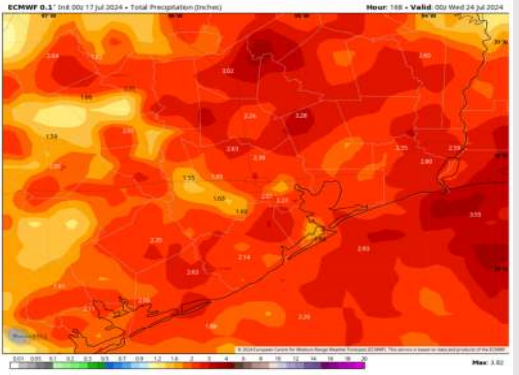
## 8-14 Day Temperature Departure



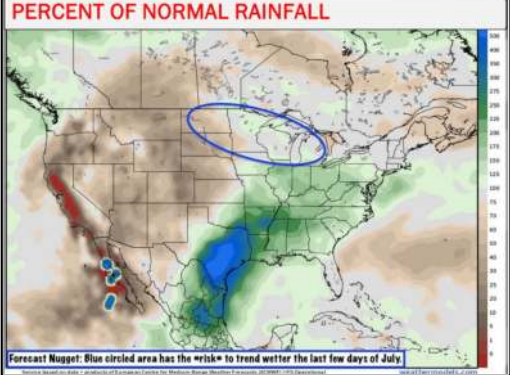
## 15-30 Day Temperature Departure



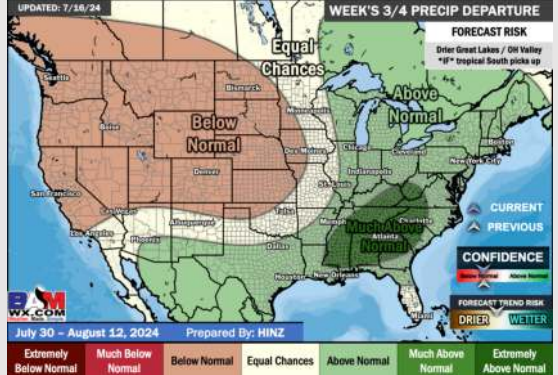
## Next 7 Day Total Precipitation



## 8-14 Day % of Average Precip.



## 15-30 Day % of Average Precip.



- Temps are expected to be slightly below normal for the week 1 timeframe. Scattered rain/storms will continue to work across the area over the coming days for Week 1.
- Well above normal precipitation are favored for the week 2 timeframe. Below normal temperatures continue for the week 2 timeframe.
- Above normal chances for precipitation and below normal temperatures are favored in the weeks 3/4 timeframe.