

Houston Pilots Forecast Package



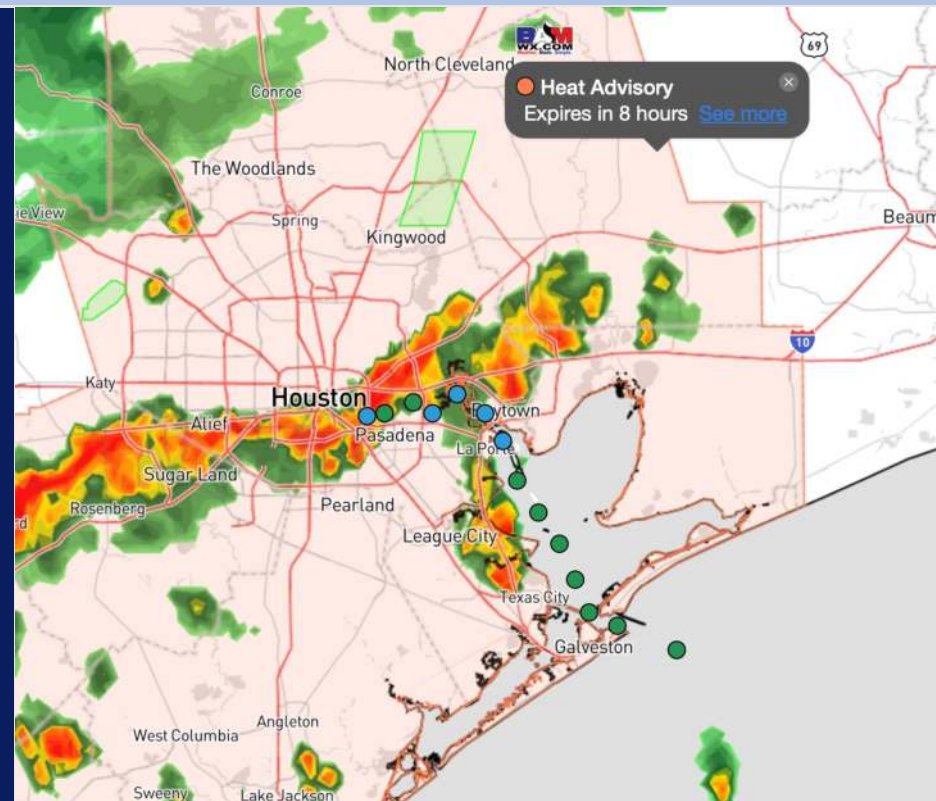
Updated: 1:15 PM CT

Friday, July 12, 2024

Forecaster: Alyssa Elliott

Weather Headlines

- Scattered showers/storms will continue to work through the area over the next few days.
- Updated Seasonal Hurricane outlook below. Check Tropical slides for more information!
- Not anticipating any visibility concerns the next few days.



Current Radar: 1:00 PM CT

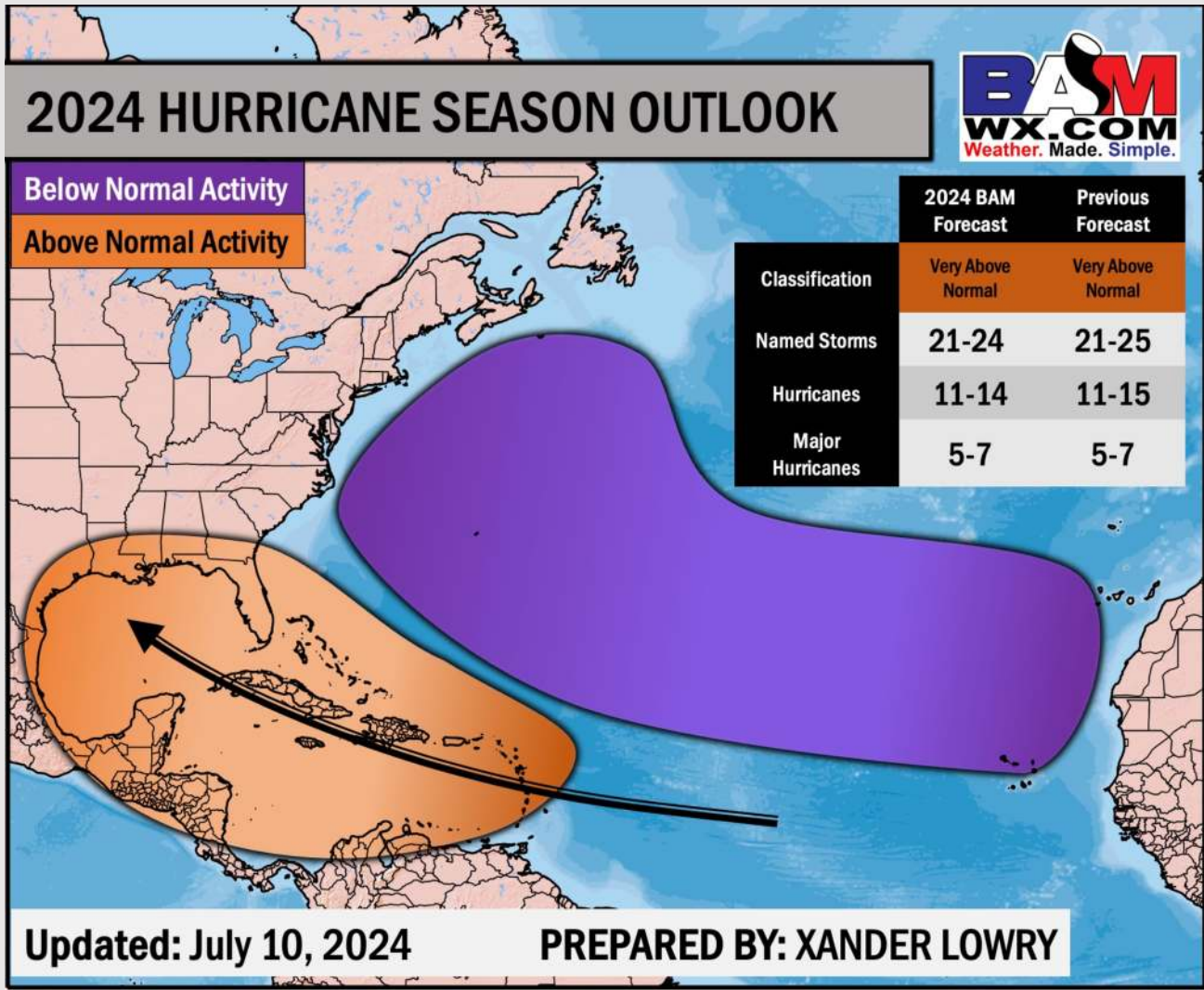


As always, please do not hesitate to reach out to us with any forecast questions via the chat option on Clarity or our on-call number, **(317)-560-8122** press **1** for forecast questions.

Houston Pilots Tropical Update



Seasonal Hurricane Outlook



Unfavorable conditions will be present across widespread portions of the Atlantic throughout the remainder of July with no signals for possible development until the end of July and into Early August.

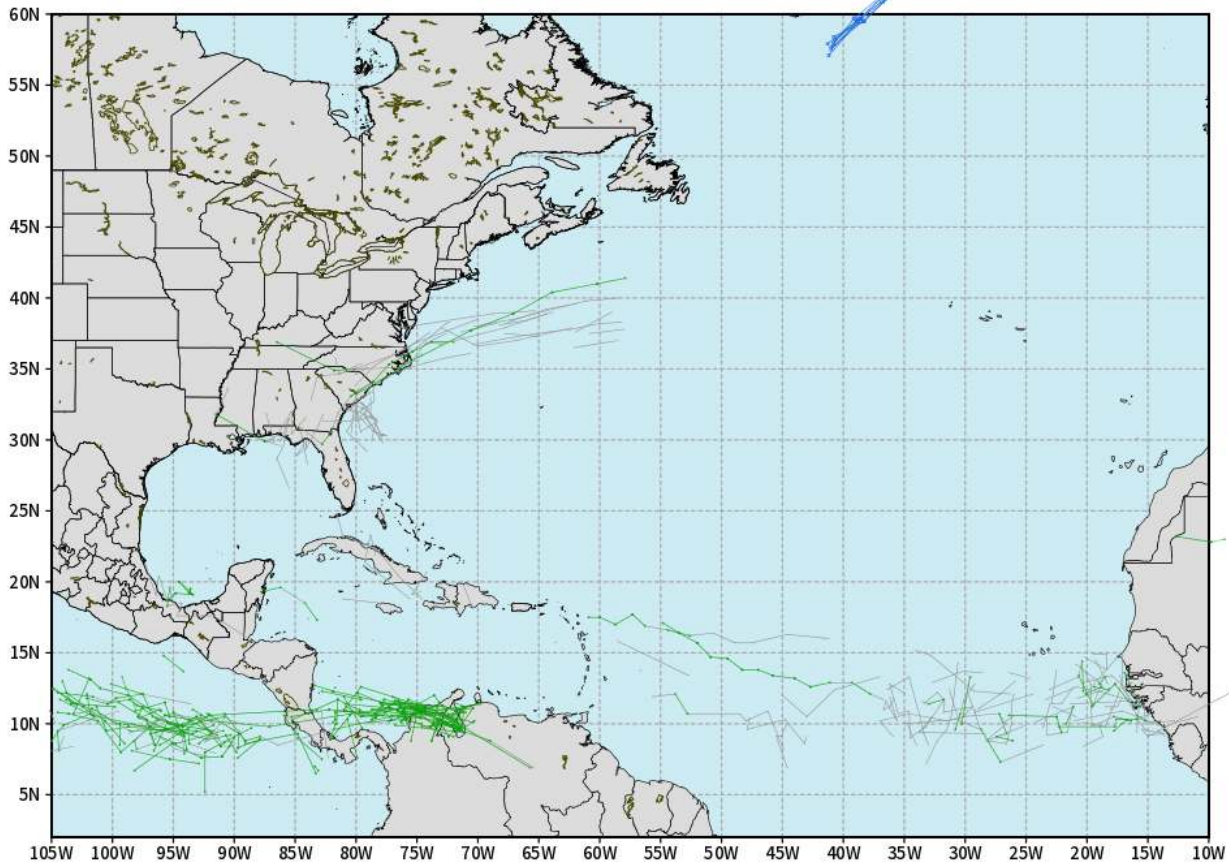
However, seasonal outlook remains well above normal with the Gulf Of Mexico Favored to see increased activity

Houston Pilots Tropical Update

European Model Next 10 Days - Tropical Tracks

ECMWF ATLANTIC EPS Cyclone Locations --> Next [10-days]
INIT: 12Z11JUL2024 --> UNTIL 12Z21JUL2024

- o-o ENSEMBLE MEAN
- o-o 1000 - 1010 hPa
- o-o 980 - 999 hPa
- o-o 960 - 979 hPa
- o-o 950 - 959 hPa
- o-o < 950 hPa



weathermodels.com

Not in favor of any tropical threats over the next 10 days to the HOU area.

Houston Pilots Visibility Chart (miles)



Forecast Confidence



Time	Fri 1pm	Fri 2pm	Fri 3pm	Fri 4pm	Fri 5pm	Fri 6pm	Fri 7pm	Fri 8pm	Fri 9pm	Fri 10pm	Fri 11pm	Sat 12am	Sat 1am	Sat 2am	Sat 3am	Sat 4am	Sat 5am	Sat 6am	Sat 7am	Sat 8am	Sat 9am	Sat 10am	Sat 11am	Sat 12pm
610 Bridge	10	10	10	10	10	10	10	10	10	10	10	10	10	10	10	10	10	10	10	10	10	10	10	10
Kinder 1	10	10	10	10	10	10	10	10	10	10	10	10	10	10	10	10	10	10	10	10	10	10	10	10
Greens Bayou	10	10	10	10	10	10	10	10	10	10	10	10	10	10	10	10	10	10	10	10	10	10	10	10
Shell Crude	10	10	10	10	10	10	10	10	10	10	10	10	10	10	10	10	10	10	10	10	10	10	10	10
Lynchburg Ferries	10	10	10	10	10	10	10	10	10	10	10	10	10	10	10	10	10	10	10	10	10	10	10	10
Exxon 3	10	10	10	10	10	10	10	10	10	10	10	10	10	10	10	10	10	10	10	10	10	10	10	10
Morgans Point	10	10	10	10	10	10	10	10	10	10	10	10	10	10	10	10	10	10	10	10	10	10	10	10
75/76	10	10	10	10	10	10	10	10	10	10	10	10	10	10	10	10	10	10	10	10	10	10	10	10
63/64	10	10	10	10	10	10	10	10	10	10	10	10	10	10	10	10	10	10	10	10	10	10	10	10
51/52	10	10	10	10	10	10	10	10	10	10	10	10	10	10	10	10	10	10	10	10	10	10	10	10
37/38	10	10	10	10	10	10	10	10	10	10	10	10	10	10	10	10	10	10	10	10	10	10	10	10
25/26	10	10	10	10	10	10	10	10	10	10	10	10	10	10	10	10	10	10	10	10	10	10	10	10
11/12	10	10	10	10	10	10	10	10	10	10	10	10	10	10	10	10	10	10	10	10	10	10	10	10
1 & 2 Bravo	10	10	10	10	10	10	10	9	10	10	10	10	10	10	10	10	10	10	9	10	10	9	7	10

NOTE: This is automated data that may/may not agree with the official B.A.M. thinking that's found on the daily slides or special visibility report slides. This data should be used as a guide only

Houston Pilots Wind Chart



Forecast Confidence



Sustained wind 13 Knots
Gusts 18 Knots
Wind from the N

Example

WS: 13
G:18
N

Time Knots	Fri 1pm	Fri 2pm	Fri 3pm	Fri 4pm	Fri 5pm	Fri 6pm	Fri 7pm	Fri 8pm	Fri 9pm	Fri 10pm	Fri 11pm	Sat 12am	Sat 1am	Sat 2am	Sat 3am	Sat 4am	Sat 5am	Sat 6am	Sat 7am	Sat 8am	Sat 9am	Sat 10am	Sat 11am	Sat 12pm
610 Bridge	3 7 E	4 8 ESE	4 9 ESE	5 9 SE	5 9 SE	5 9 SE	5 9 SE	4 8 SSE	3 7 SSE	3 6 SSE	3 6 S	2 6 SSE	2 5 S	2 5 S	1 4 SE	1 4 SE	1 4 SE	1 4 ESE	1 4 E	1 4 E	1 4 E	2 5 SSE	3 6 SE	3 7 SSE
Kinder 1	3 7 E	4 8 ESE	5 9 ESE	5 9 SE	5 9 SE	5 9 SE	5 8 SSE	4 8 SSE	3 6 SSE	3 6 S	3 6 S	2 6 SSE	2 5 S	1 5 S	1 4 SE	1 4 SE	1 4 ESE	1 4 E	1 4 E	1 4 E	1 4 E	2 5 SSE	3 6 SE	3 7 SSE
Greens Bayou	3 7 E	4 8 ESE	5 9 ESE	5 9 SE	5 9 SE	5 9 SSE	5 8 SSE	4 8 SSE	3 6 SSE	3 6 S	2 6 S	2 5 S	2 5 S	1 4 SE	1 4 SE	1 4 ESE	1 3 E	1 4 E	1 4 E	1 4 E	1 4 E	2 5 SSE	3 6 SE	3 7 SSE
Shell Crude	3 7 E	4 8 ESE	4 8 ESE	5 9 SE	5 9 SE	5 9 SSE	5 8 SSE	4 8 SSE	3 6 SSE	3 6 S	2 6 S	2 5 S	2 5 S	2 5 S	1 4 SE	1 4 SSE	1 4 E	1 3 E	1 4 E	1 4 E	1 4 E	2 5 SSE	3 6 SE	3 7 SSE
Lynchburg Ferries	3 6 E	3 7 ESE	4 8 ESE	5 9 SE	5 9 SE	5 9 SE	4 8 SE	3 8 SE	3 6 SSE	3 6 SSE	2 6 SSE	2 5 SSE	2 5 S	1 4 SE	1 4 SE	1 4 SE	1 3 SE	1 3 SE	1 3 SE	1 3 SE	1 4 E	2 5 SSE	3 6 SE	3 7 SSE
Exxon 3	5 8 E	5 10 ESE	6 11 SE	7 11 SE	7 11 SE	7 11 SE	7 10 SE	7 9 SE	6 8 SSE	5 8 SSE	5 7 SSE	5 7 SSE	5 6 S	4 6 S	4 5 S	3 5 SSE	3 5 ESE	3 4 SE	3 4 SE	3 4 SE	3 4 SE	3 5 SE	4 6 SE	4 7 SSE
Morgans Point	5 8 E	5 9 ESE	6 10 SE	7 11 SE	7 11 SE	7 11 SSE	7 10 SSE	7 9 SSE	6 8 SSE	5 8 SSE	5 7 SSE	5 7 SSE	5 6 S	4 5 S	4 4 S	3 5 SSE	3 4 E	3 4 E	3 4 E	3 4 E	3 4 E	3 4 E	4 6 SE	4 7 SSE
75/76	4 8 E	5 9 ESE	5 10 SE	6 11 SSE	6 11 SSE	7 11 SSE	7 10 SSE	7 9 SSE	7 8 SSE	7 7 SSE	7 7 SSE	7 7 S	7 6 S	7 6 S	6 5 S	5 5 SSE	5 4 SSE	5 4 SSE	5 4 SSE	5 4 SSE	5 4 SSE	6 6 SE	6 7 SE	6 8 SSE
63/64	4 8 E	5 9 ESE	5 10 SE	6 10 SSE	6 10 SSE	7 10 SSE	7 10 SSE	7 9 SSE	7 8 SSE	7 7 SSE	7 7 SSE	7 7 S	7 6 S	6 5 S	5 5 S	5 4 SSE	5 4 SSE	5 4 SSE	5 4 SSE	5 4 SSE	5 4 SSE	6 6 SE	6 7 SE	6 8 SSE
51/52	4 8 E	4 9 ESE	5 10 SE	6 10 SE	6 11 SE	7 11 SSE	7 10 SSE	7 9 SSE	7 8 SSE	7 7 SSE	7 7 SSE	7 7 S	7 6 S	6 5 S	6 4 S	5 4 SSE	5 4 SSE	5 4 SSE	5 4 SSE	5 4 SSE	5 4 SSE	6 6 SE	6 7 SE	6 8 SSE
37/38	4 8 E	5 8 ESE	5 9 ESE	6 10 SE	6 10 SE	7 10 SSE	7 10 SSE	7 9 SSE	7 8 SSE	7 7 SSE	7 7 SSE	7 7 S	7 6 S	6 5 S	6 4 S	5 4 SSE	5 4 SSE	5 4 SSE	5 4 SSE	5 4 SSE	5 4 SSE	6 6 SE	6 7 SE	6 8 SSE
25/26	5 8 E	5 8 ESE	5 9 ESE	6 10 SE	6 10 SE	7 10 SSE	7 10 SSE	7 9 SSE	7 8 SSE	7 7 SSE	7 7 SSE	7 7 S	7 6 S	6 5 S	6 4 S	5 4 SSE	5 4 SSE	5 4 SSE	5 4 SSE	5 4 SSE	5 4 SSE	6 6 SE	6 7 SE	6 8 SSE
11/12	5 8 E	5 9 ESE	5 9 ESE	6 10 SE	6 10 SE	7 10 SSE	7 10 SSE	7 9 SSE	7 8 SSE	7 7 SSE	7 7 SSE	7 6 SSE	7 5 S	6 5 S	5 4 S	5 4 SSE	5 4 SSE	5 4 SSE	5 4 SSE	5 4 SSE	5 4 SSE	6 6 SE	6 7 SE	6 8 SSE
1 & 2 Bravo	4 7 E	5 7 E	5 8 ESE	5 9 SE	6 9 SE	7 10 SSE	7 10 SSE	7 9 SSE	7 8 SSE	8 8 SSE	8 8 SSE	8 7 S	8 7 S	7 6 S	7 5 S	6 5 SSE	6 4 SSE	6 4 SSE	6 4 SSE	6 4 SSE	6 4 SSE	7 7 S	7 8 S	7 8 SSE

NOTE: This is automated data that may/may not agree with the official BAM thinking that's found on the daily slides. This data should be used as a guide only.

Houston Pilots: Fri. 7/12/2024



Forecast Discussion

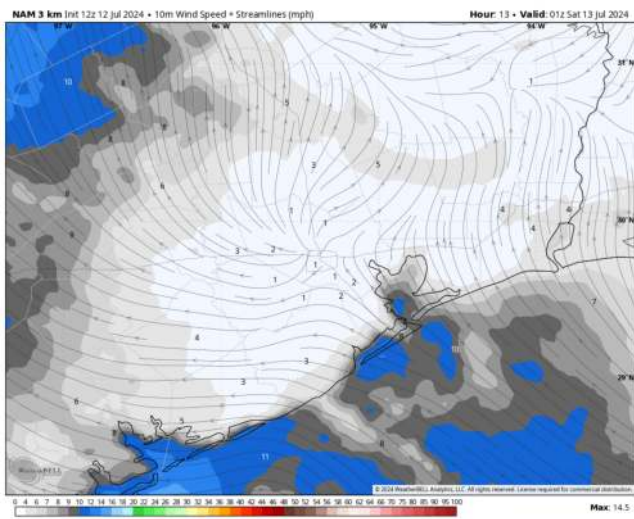
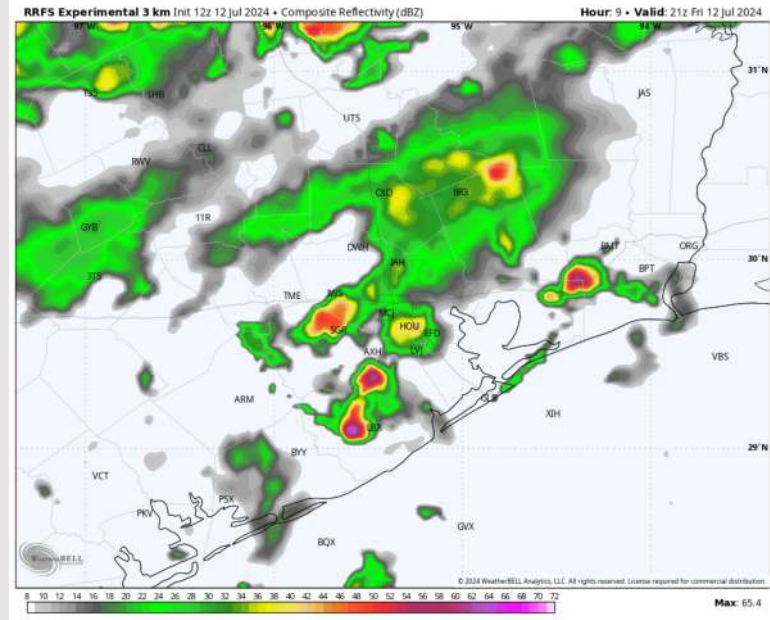
Precip: Scattered to widespread showers and thunderstorms are expected to continue out of the SW for all stations until 9 PM. A couple pockets of drizzle may linger through 10 PM. **Lightning, small hail, and wind gusts of 30-35 kts will continue to be a risk with these storms.**

Wind: Winds will be variable through 2PM before shifting to be out of the S/SE throughout the rest of the day. **N of Morgan's Point:** Winds be at 2-5 kts throughout the rest of the day. **S of Morgan's Point:** Winds at 3-8 kts through 8 PM before slightly increasing to 6-11 kts.

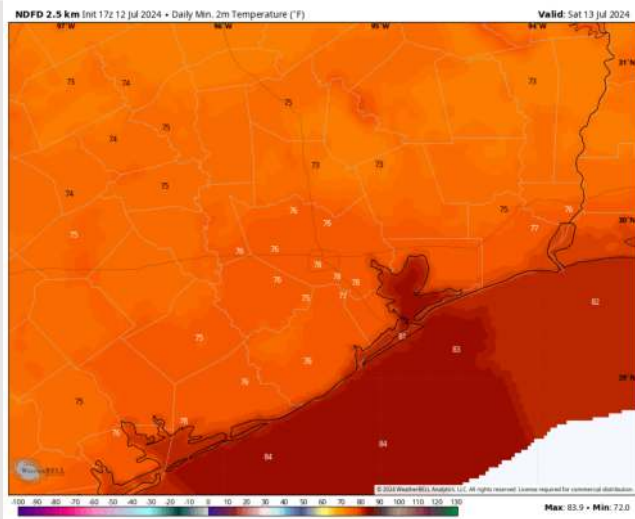
Low Temps: **N of Morgan's Point:** Upper 70s F. **S of Morgan's Point:** Low 80s F.

Visibility: Fog is not favored the rest of the day.

Precip Image: 6 PM CT



Wind Speed:
8 PM CT



Low Temps
SAT AM

Houston Pilots: Sat. 7/13/2024



Forecast Discussion

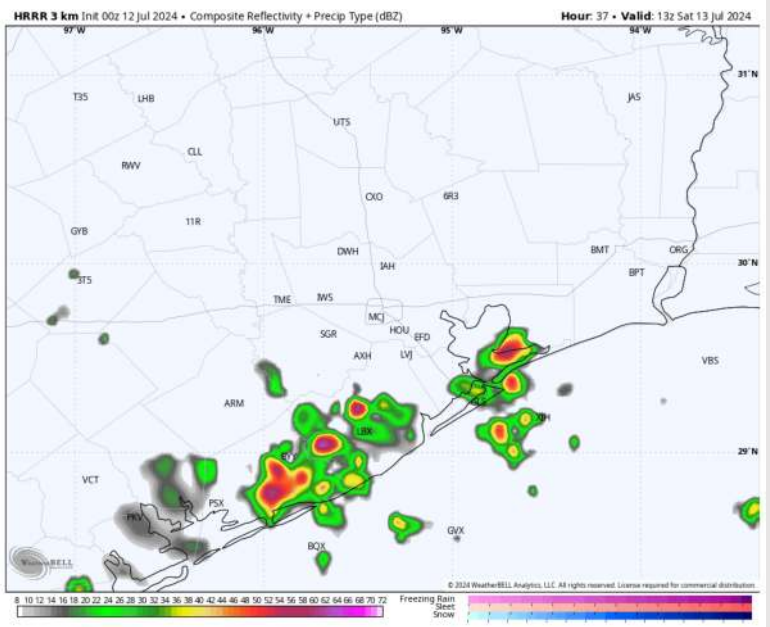
Precip: Favoring dry conditions most of Saturday, aside from scattered (40%) chances from 7AM – 11AM. Isolated showers and thunderstorms (10%) can linger throughout the area through 7PM. **Wind gusts of 30-40 kts, small hail, and lightning will all be possible!**

Wind: Winds will continue generally out of the E/SE throughout the day.
N of Morgan's Point: Winds 3-8 kts throughout the day Saturday.
S of Morgan's Point: Winds at 8-13 kts through 5AM, before decreasing to 4-9 kts for the rest of the day.

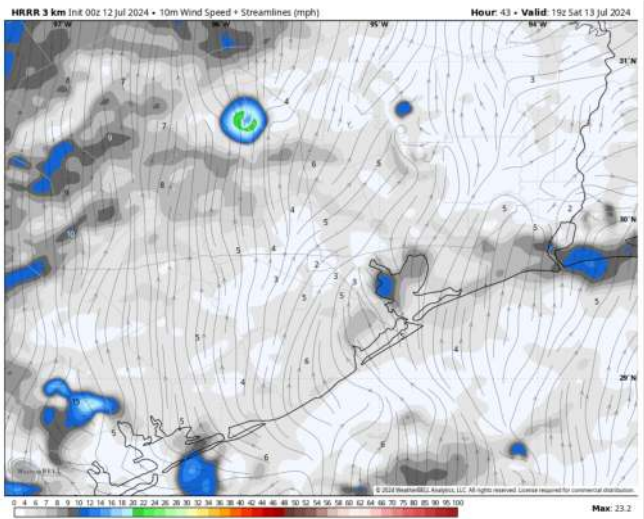
High Temps: **N of Morgan's Point:** Low 90s F. **S of Morgan's Point:** Upper 80s F.

Visibility: Not anticipating any fog concerns Saturday.

Precip Image: 8 AM CT



Wind Speed
2 PM CT



High Temps
Saturday



Houston Pilots: Sun. 7/14/2024



Forecast Discussion

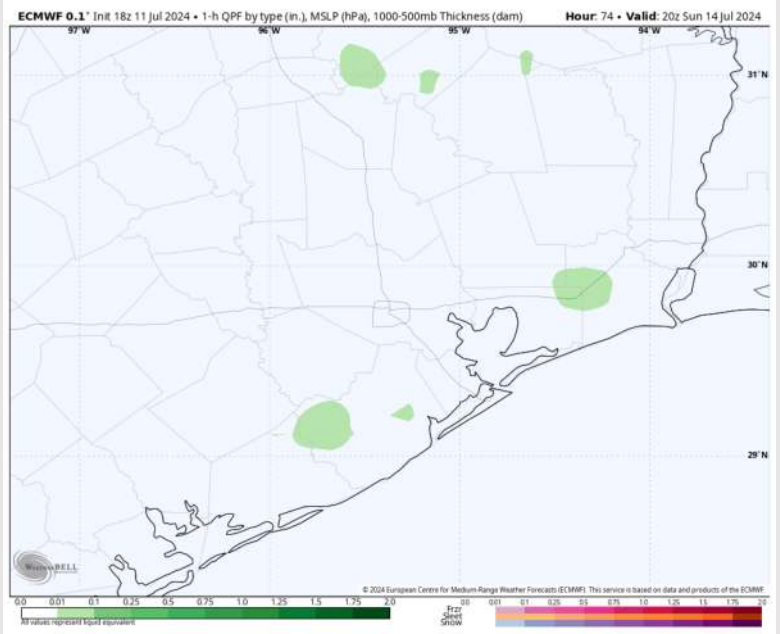
Precip: Favoring dry conditions Sunday aside from a low-end (10%) light shower chances between 1PM – 4PM.

Wind: Winds will be out of the SW through 7AM before being variable through 9AM and then settling out of the S/SE for the rest of the day. **N of Morgan's Point:** Winds at 2-7 kts throughout the day Sunday. **S of Morgan's Point:** Winds at 5-10 kts throughout the the day on Sunday.

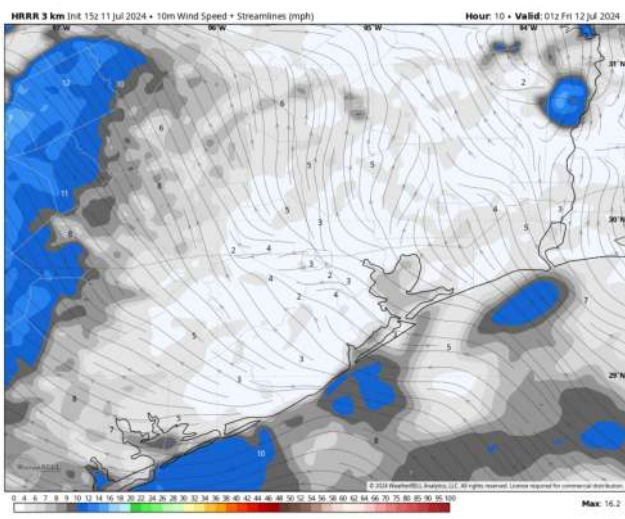
High Temps: **N of Morgan's Point:** Low/Mid 90 F. **S of Morgan's Point:** Upper 80s F.

Visibility: Not favoring any fog concerns Sunday.

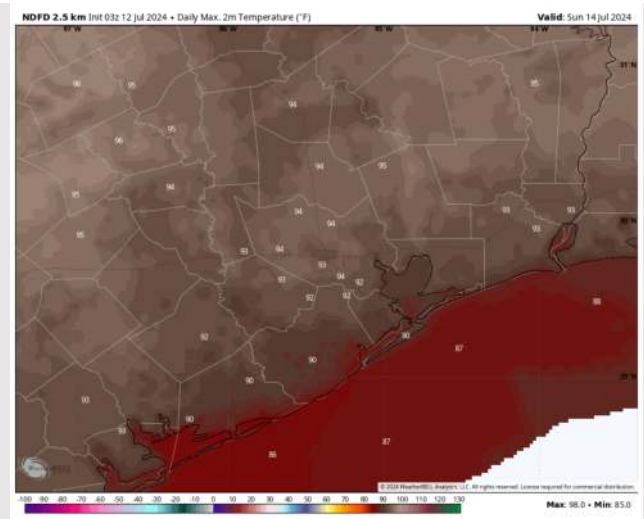
Precip Image: 3 PM CT



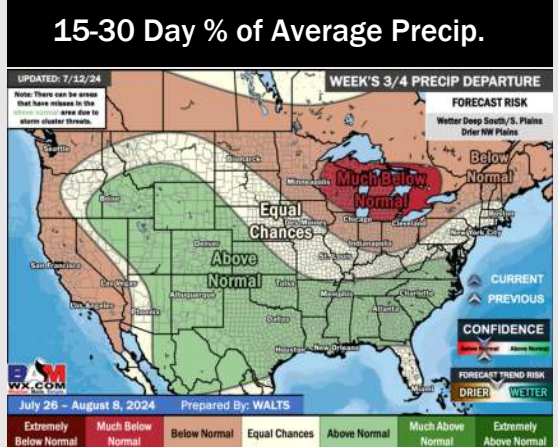
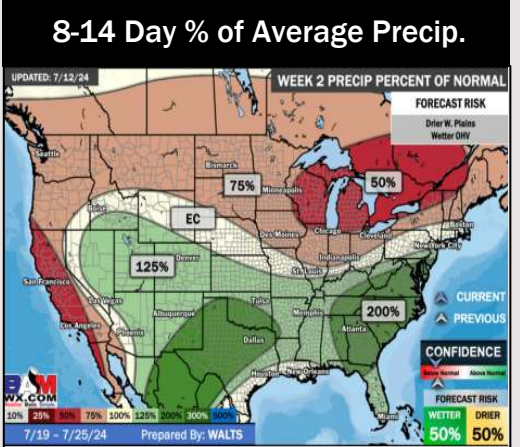
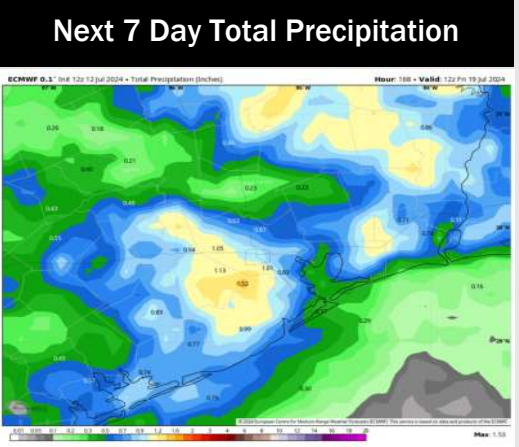
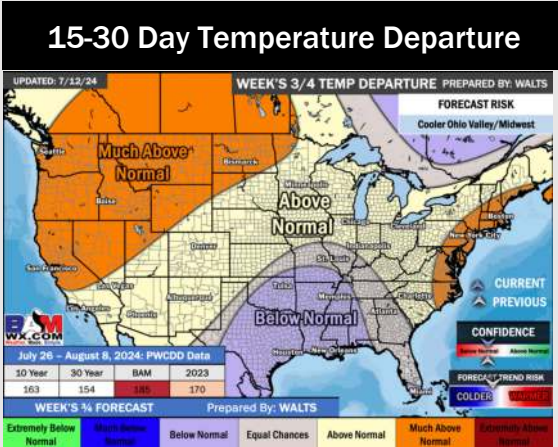
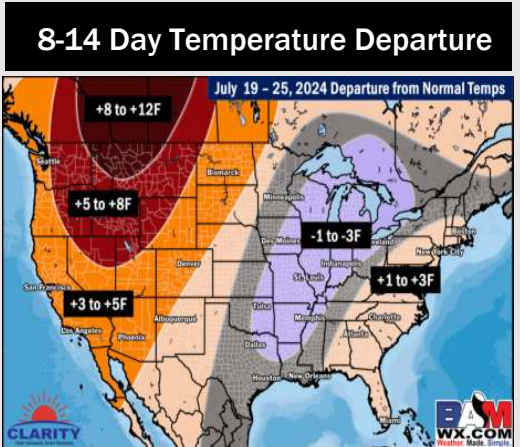
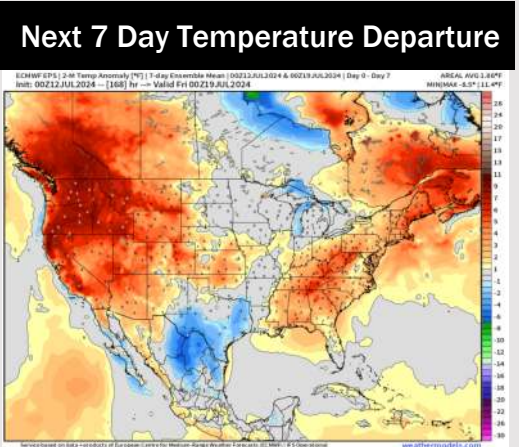
Wind Speed:
8 PM CT



High Temps
Sunday



Houston Pilots: 7/12/24



- Temps are expected to be seasonable/slightly below normal for the week 1 timeframe. Scattered rain/storms will continue to work across the area over the coming days for Week 1.
- Near normal precipitation are favored for the week 2 timeframe. Near normal temperatures are favored for week 2.
- Above normal chances for precipitation and below normal temperatures are favored in the weeks 3/4 timeframe.