

# Houston Pilots Forecast Package



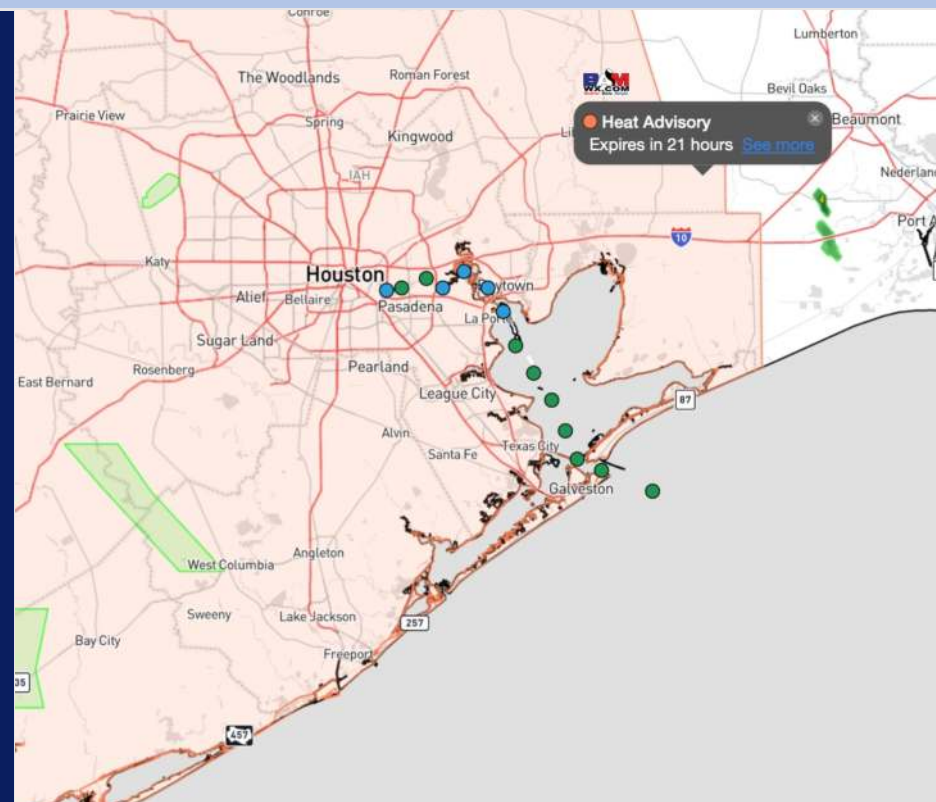
Updated: 10:45 PM CT

Wednesday, July 10, 2024

Forecaster: Xander Lowry

## Weather Headlines

- Scattered showers/storms will continue to work through the area over the next few days.
- Updated Seasonal Hurricane outlook below. Check Tropical slides for more information!
- Not anticipating any visibility concerns the next few days.



Current Radar: 10:45 PM CT

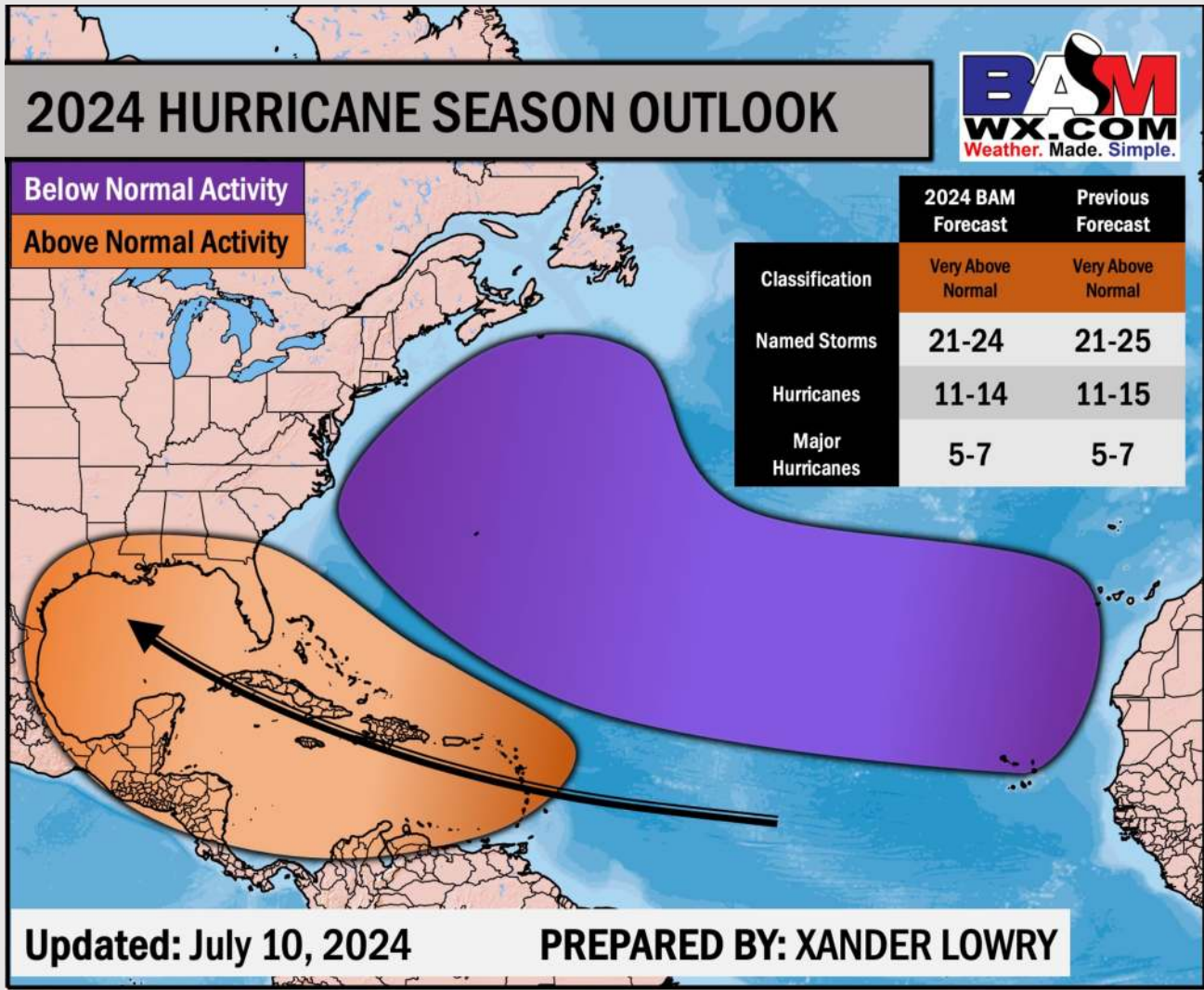


As always, please do not hesitate to reach out to us with any forecast questions via the chat option on Clarity or our on-call number, **(317)-560-8122** press **1** for forecast questions.

# Houston Pilots Tropical Update



## Seasonal Hurricane Outlook



Unfavorable conditions will be present across widespread portions of the Atlantic throughout the remainder of July with no signals for possible development until the end of July and into Early August.

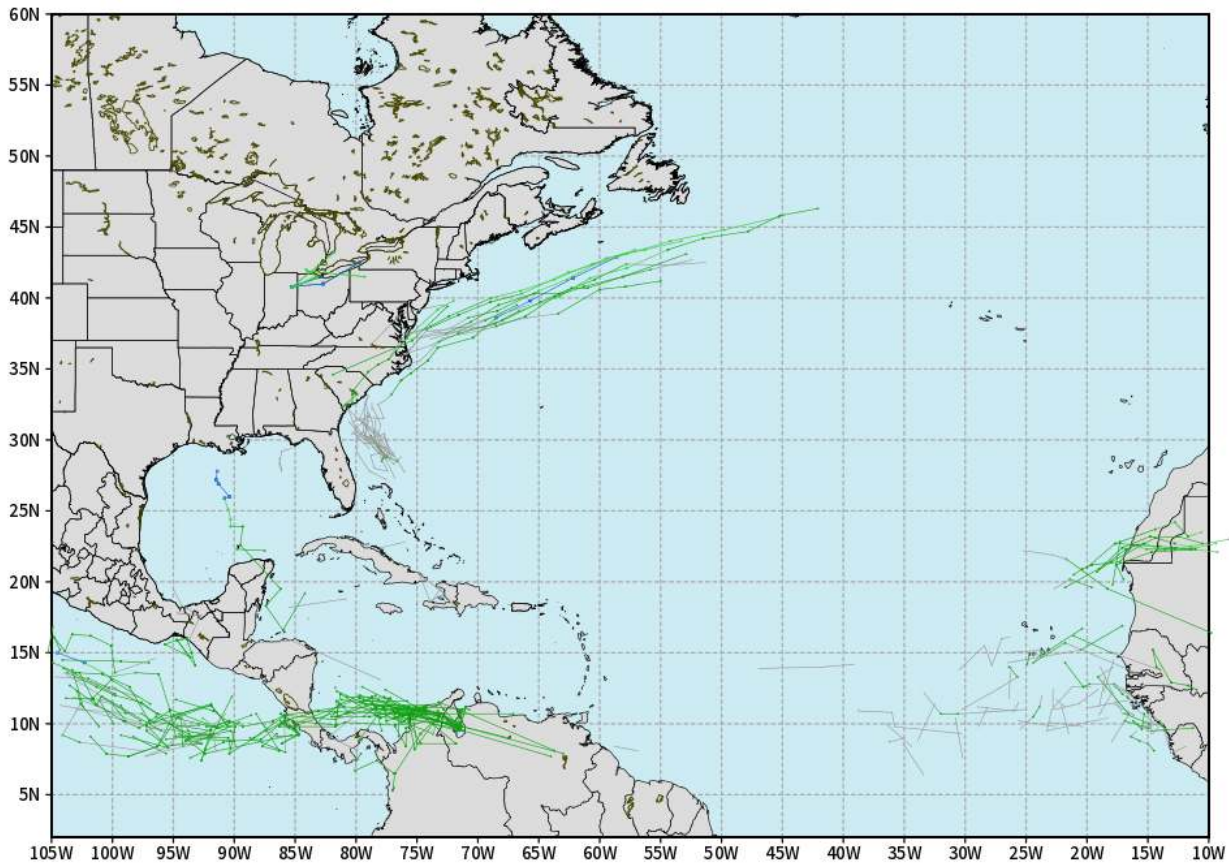
However, seasonal outlook remains well above normal with the Gulf Of Mexico Favored to see increased activity

# Houston Pilots Tropical Update

## European Model Next 10 Days - Tropical Tracks

ECMWF ATLANTIC EPS Cyclone Locations --> Next [10-days]  
INIT: 12Z10JUL2024 --> UNTIL 12Z20JUL2024

- o-o ENSEMBLE MEAN
- o-o 1000 - 1010 hPa
- o-o 980 - 999 hPa
- o-o 960 - 979 hPa
- o-o 950 - 959 hPa
- o-o < 950 hPa



[weathermodels.com](http://weathermodels.com)

Not in favor of any tropical threats over the next 10 days to the HOU area.

# Houston Pilots Visibility Chart (miles)



## Forecast Confidence



Time	Wed 11pm	Thu 12am	Thu 1am	Thu 2am	Thu 3am	Thu 4am	Thu 5am	Thu 6am	Thu 7am	Thu 8am	Thu 9am	Thu 10am	Thu 11am	Thu 12pm	Thu 1pm	Thu 2pm	Thu 3pm	Thu 4pm	Thu 5pm	Thu 6pm	Thu 7pm	Thu 8pm	Thu 9pm	Thu 10pm
610 Bridge	10	10	10	10	10	10	10	10	6	10	10	10	10	10	10	10	10	10	10	10	10	10	10	10
Kinder 1	10	10	10	10	10	10	10	10	6	10	10	10	10	10	10	10	10	10	10	10	10	10	10	10
Greens Bayou	10	10	10	10	10	10	10	10	6	10	10	10	10	10	10	10	10	10	10	10	10	10	10	10
Shell Crude	10	10	10	10	10	10	10	10	6	10	10	10	10	10	10	10	10	10	10	10	10	10	10	10
Lynchburg Ferries	10	10	10	10	10	10	10	10	6	10	10	10	10	10	10	10	10	10	10	10	10	10	10	10
Exxon 3	10	10	10	10	10	10	10	10	6	10	10	10	10	10	10	10	10	10	10	10	10	10	10	10
Morgans Point	10	10	10	10	10	10	10	10	6	10	10	10	10	10	10	10	10	10	10	10	10	10	10	10
75/76	10	10	10	10	10	10	10	10	9	10	10	10	10	10	10	10	10	10	10	10	10	10	9	9
63/64	10	10	10	10	10	10	10	10	9	10	10	10	10	10	10	10	10	10	10	10	10	10	9	9
51/52	10	10	10	10	10	10	10	10	10	10	10	10	10	10	10	10	10	10	10	10	10	10	9	9
37/38	10	10	10	10	10	10	10	10	10	10	10	10	10	10	10	10	10	10	10	10	10	10	9	9
25/26	10	10	10	10	10	10	10	10	10	10	10	10	10	10	10	10	10	10	10	10	10	10	9	9
11/12	10	10	10	10	10	10	10	10	10	10	10	10	10	10	10	10	10	10	10	10	10	10	10	10
1 & 2 Bravo	10	10	10	10	10	10	10	10	10	10	10	10	10	10	10	10	10	10	10	10	10	10	10	10

**NOTE: This is automated data that may/may not agree with the official BAM thinking that's found on the daily slides or special visibility report slides. This data should be used as a guide only**

# Houston Pilots Wind Chart



## Forecast Confidence



## Example

Sustained wind 13 Knots  
Gusts 18 Knots  
Wind from the N

WS: 13  
G:18  
N

Time Knots	Wed 11pm	Thu 12am	Thu 1am	Thu 2am	Thu 3am	Thu 4am	Thu 5am	Thu 6am	Thu 7am	Thu 8am	Thu 9am	Thu 10am	Thu 11am	Thu 12pm	Thu 1pm	Thu 2pm	Thu 3pm	Thu 4pm	Thu 5pm	Thu 6pm	Thu 7pm	Thu 8pm	Thu 9pm	Thu 10pm
610 Bridge	2	1	1	1	1	1	1	1	1	1	1	2	2	3	3	4	4	5	4	4	4	3	3	2
	5	4	3	3	3	3	3	3	3	3	4	4	5	6	7	8	8	9	9	8	8	7	6	5
	SSE	SSE	S	W	W	NW	N	N	N	NNE	NNE	NE	ENE	ENE	E	ESE	ESE	SE	SSE	SE	SE	SE	SE	SSE
Kinder 1	2	1	1	1	1	1	1	1	1	1	1	2	3	3	4	4	5	4	4	4	4	3	3	2
	5	4	3	3	3	3	3	3	3	3	4	4	5	6	7	8	8	9	9	8	8	7	6	5
	SSE	SSE	S	W	W	NW	N	N	N	NNE	NNE	NE	ENE	ENE	E	ESE	ESE	SE	SSE	SE	SE	SE	SE	SSE
Greens Bayou	1	1	1	1	1	1	1	1	1	1	1	2	2	3	4	4	5	5	4	4	4	3	3	2
	5	4	3	3	3	3	3	3	3	3	4	4	5	6	7	8	8	9	9	8	8	7	6	5
	SE	SSE	S	W	WNW	N	N	N	N	NNE	NNE	NE	ENE	E	E	ESE	SE	SE	SE	ESE	ESE	SE	SE	SE
Shell Crude	1	1	1	1	1	1	1	1	1	1	1	2	3	3	4	4	5	5	4	4	4	3	3	2
	4	4	3	3	3	3	3	3	3	3	4	4	6	6	8	8	8	9	9	8	7	7	6	5
	SE	SSE	S	W	WNW	N	N	N	N	NNE	NNE	NE	ENE	E	E	ESE	SE	SSE	ESE	ESE	SE	SE	SE	SE
Lynchburg Ferries	1	1	1	1	1	1	1	1	1	1	1	2	3	3	3	4	4	5	5	4	4	3	2	2
	4	3	3	3	2	3	2	3	3	3	4	4	6	6	7	8	8	9	9	8	8	6	6	5
	SE	SSE	SSE	WNW	N	N	N	N	N	NNE	NNE	NE	ENE	E	E	SE	SE	SE	ESE	SE	SE	SE	ESE	SE
Exxon 3	4	3	3	3	3	3	2	3	3	3	3	3	3	4	5	6	6	7	6	6	6	5	5	4
	6	5	5	4	4	4	4	4	5	5	5	6	7	8	9	10	10	11	11	9	9	8	6	6
	SSE	S	S	WSW	N	N	N	N	N	NNE	NNE	ENE	E	E	ESE	SE	SE	SE	ESE	SE	SSE	SSE	ESE	SE
Morgans Point	3	3	3	3	2	3	2	3	3	3	3	3	3	4	5	6	6	7	6	6	6	5	5	4
	6	5	5	4	4	4	4	4	5	5	6	6	7	8	9	10	10	11	10	9	9	8	6	6
	SSE	S	S	S	W	NNW	N	N	N	N	NNE	N	NE	E	E	ESE	SE	SE	SE	ESE	SE	SE	SE	SSE
75/76	4	4	3	3	3	3	3	3	3	3	3	3	3	4	5	5	5	6	6	6	6	5	5	5
	6	6	5	5	5	5	5	5	6	6	6	6	7	8	9	9	10	10	10	9	9	8	7	7
	SSE	SSE	S	S	S	WSW	NW	N	N	NNE	NNE	ENE	E	E	ESE	ESE	SE	SSE	ESE	SE	SE	SE	SE	S
63/64	4	4	3	3	3	3	3	3	3	3	3	3	3	4	5	5	5	5	5	5	5	5	5	5
	6	6	5	5	5	5	5	5	6	6	6	6	7	7	8	9	9	10	10	8	8	8	7	7
	SSE	SSE	S	S	S	SSW	WNW	NNW	N	N	NNE	NE	ENE	E	ESE	ESE	SE	SSE	ESE	ESE	SE	SE	SE	S
51/52	4	3	3	3	3	3	3	3	3	3	3	4	4	4	4	4	5	5	5	5	5	5	5	5
	6	6	6	5	5	5	5	5	6	6	6	7	7	7	8	8	8	9	9	8	8	8	7	7
	SSE	SSE	SSE	S	S	SSW	WSW	WNW	NW	NNE	NNE	NE	ENE	ESE	ESE	ESE	SE	SSE	SSE	ESE	SE	SE	SSE	SSE
37/38	4	4	3	3	3	3	3	3	3	3	3	4	4	4	4	4	4	5	5	5	5	5	5	5
	6	6	6	5	5	5	5	5	6	6	6	7	7	7	8	8	8	8	9	8	8	8	7	7
	SE	SSE	SSE	S	S	SSW	SW	WNW	NW	N	NNE	ENE	ENE	SE	ESE	ESE	SE	SSE	SSE	ESE	SE	SSE	SSE	SSE
25/26	4	3	3	3	3	3	3	3	3	3	3	4	4	4	4	4	4	5	5	5	5	5	5	5
	6	6	5	5	5	5	5	5	5	5	6	6	7	7	7	7	8	8	8	8	8	7	6	7
	SE	SSE	SSE	S	S	SSW	SW	W	NW	N	NNE	NE	E	ESE	ESE	SE	SE	SSE	SSE	SSE	SSE	SSE	SSE	SSE
11/12	3	3	3	3	3	3	3	3	3	3	3	4	4	5	5	5	5	5	5	5	5	4	4	4
	6	6	5	5	5	5	5	5	5	5	6	6	7	7	7	7	8	8	8	8	7	7	6	6
	SE	SSE	SSE	S	S	SSW	WSW	WNW	NNW	N	NNE	NE	ESE	ESE	ESE	SE	SE	SSE	SSE	SSE	SSE	SSE	SSE	SSE
1 & 2 Bravo	4	4	4	3	3	3	3	3	3	3	3	4	4	4	4	4	4	4	4	5	5	5	5	5
	6	6	6	5	5	5	5	5	6	6	6	6	6	6	6	6	7	7	7	8	7	7	7	7
	SE	SSE	SSE	S	S	S	SSW	SSW	WSW	NNE	E	E	ESE	ESE	ESE	ESE	SSE	SSE	SSE	SSE	SSE	SSE	SSE	SSE

**NOTE: This is automated data that may/may not agree with the official BAM thinking that's found on the daily slides. This data should be used as a guide only.**

## Forecast Discussion

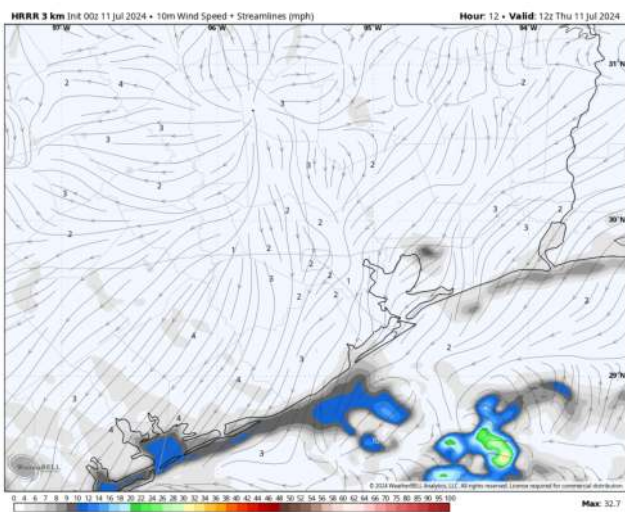
**Precip:** Scattered showers/storms will work across the area beginning at 4-8 AM CT. Favoring a gap in coverage after 8AM before more widespread chances work in closer to 12PM and continue through 3PM. Scattered light showers will linger throughout the area after 3PM for the rest of the evening. **Lightning, small hail, and wind gusts of 35-40 kts will be possible.**

**Wind:** Winds will be variable throughout the day, with a tendency to be mostly out of the SE. **N of Morgan's Point:** Winds at 2-7 kts throughout the day THU. **S of Morgan's Point:** Winds at 4-9 kts for the entire day.

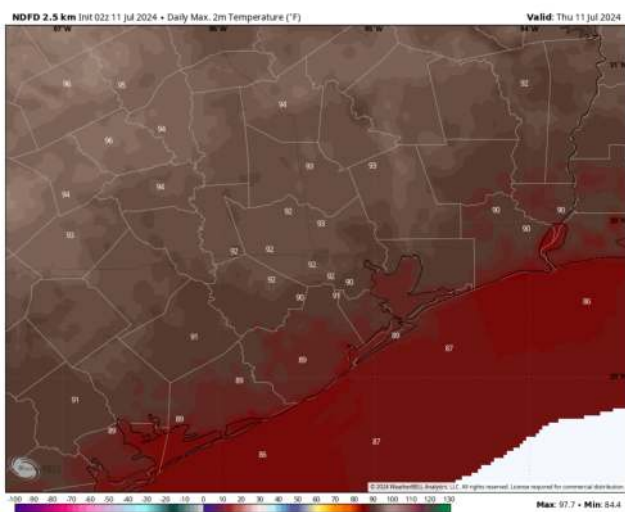
**High Temps:** **N of Morgan's Point:** Near 90 F. **S of Morgan's Point:** Upper 80s F.

**Visibility:** Not favoring any fog concerns for today.

## Precip Image: 3 PM CT



Wind Speed:  
7 AM CT



High Temps  
Today

## Forecast Discussion

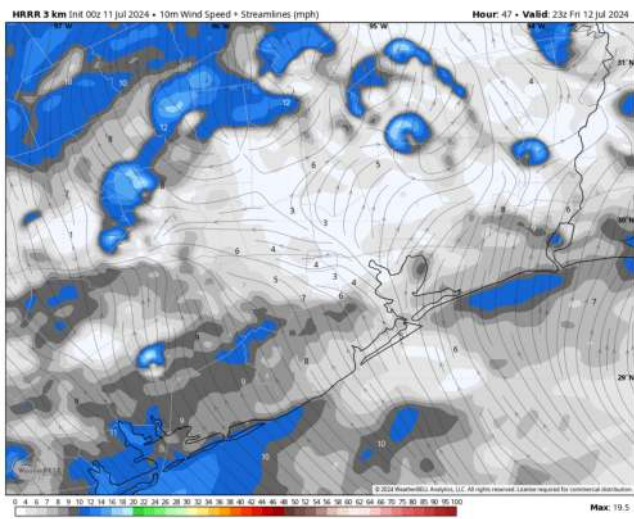
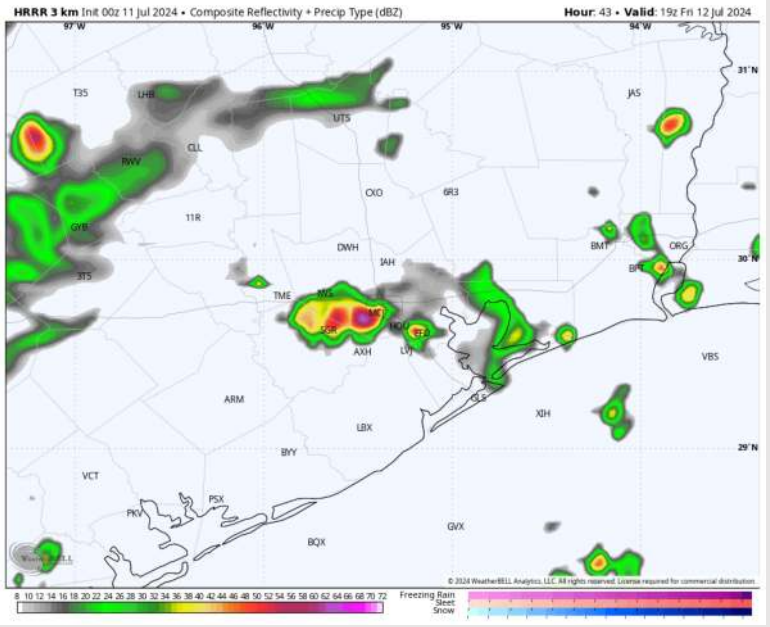
**Precip:** Favoring isolated shower chances through 12PM before more widespread showers/thunderstorms work in until 4PM. Dry conditions are favored after 4 PM and the rest of the evening. **Lightning, small hail, and wind gusts of 35-40 kts will be possible.**

**Wind:** Winds will be variable through 2PM before shifting to be out of the S/SE throughout the rest of the day Friday. **N of Morgan's Point:** Winds be at 2-5 kts throughout Friday. **S of Morgan's Point:** Winds at 3-8 kts through 8 PM before slightly increasing to 7-12 kts.

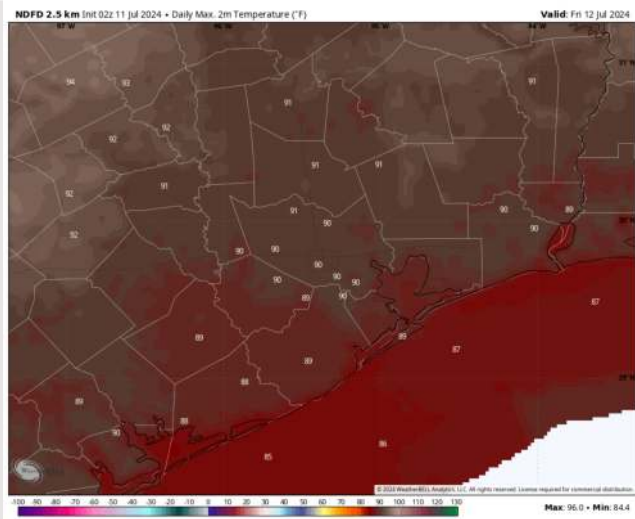
**High Temps:** **N of Morgan's Point:** Near 90 F. **S of Morgan's Point:** Upper 80s F.

**Visibility:** Fog is not favored for FRI at this time

## Precip Image: 2 PM CT



Wind Speed:  
6 PM CT



High Temps  
Friday

# Houston Pilots: Sat. 7/13/2024



## Forecast Discussion

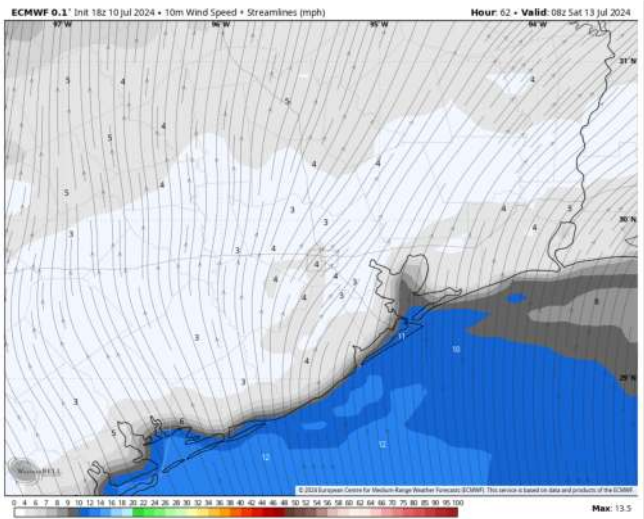
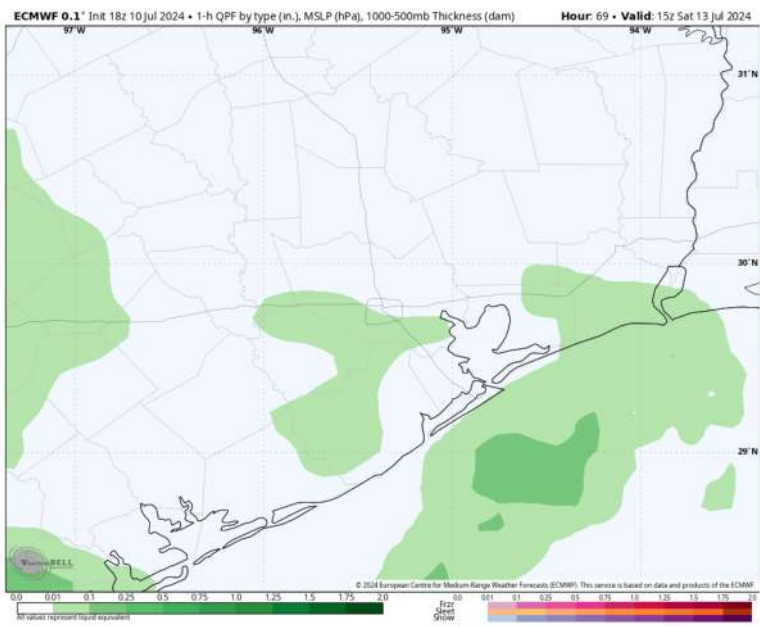
**Precip:** Favoring dry conditions Saturday, aside from scattered (40%) chances from 7AM – 11AM.

**Wind:** Winds will continue generally out of the E. through ~5 PM. Winds will briefly become variable then will turn out of the SSE by 7 PM. **N of Morgan's Point:** Winds 3-8 kts throughout the day Saturday. **S of Morgan's Point:** Winds at 8-13 kts through 6AM, before decreasing to 4-9 kts for the rest of the day.

**High Temps:** **N of Morgan's Point:** Low 90s F. **S of Morgan's Point:** Upper 80s F.

**Visibility:** Not anticipating any fog concerns Saturday.

## Precip Image: 10 AM CT



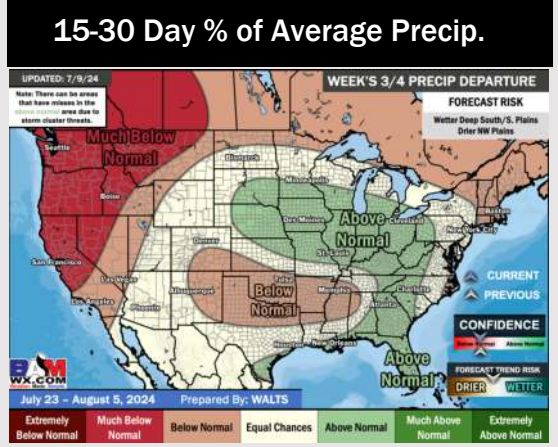
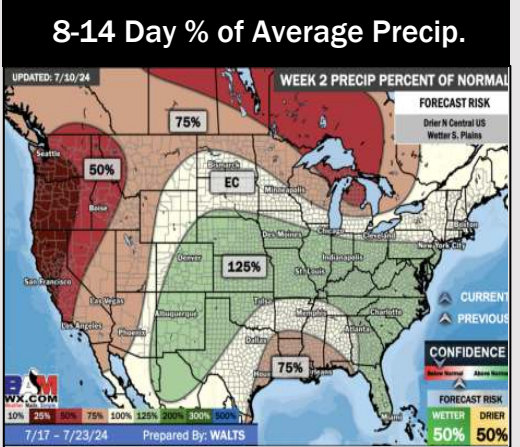
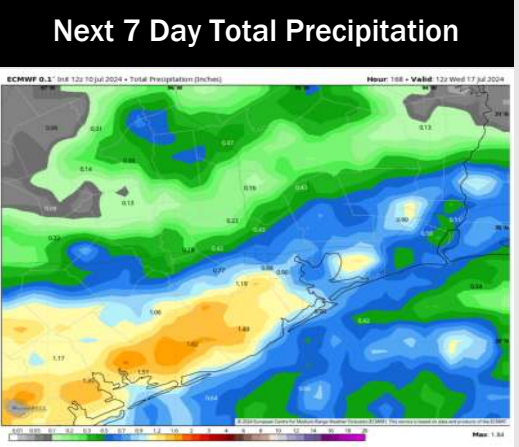
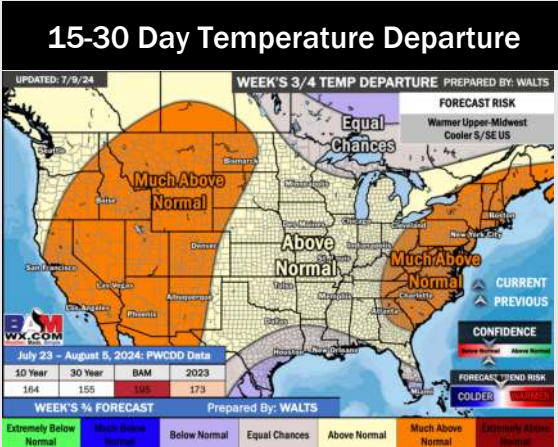
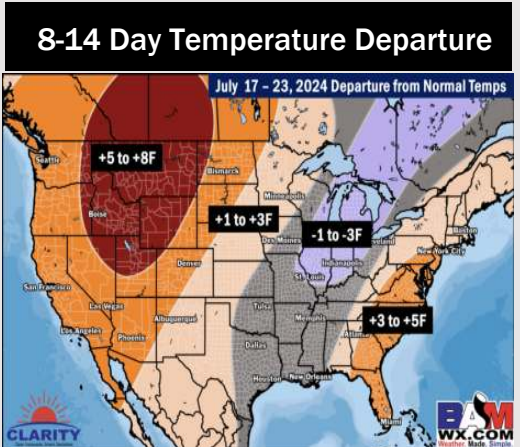
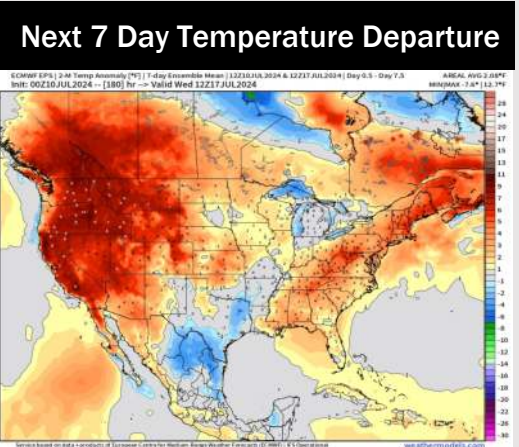
Wind Speed  
3 AM CT



High Temps  
Saturday



# Houston Pilots: 7/11/24



- Temps are expected to be seasonable/slightly below normal for Week 1 timeframe. Scattered rain/storms will continue to work across the area over the coming days for Week 1
- Below normal precipitation are favored for the week 2 timeframe. Near normal temperatures are favored for week 2.
- Above normal chances for precipitation and slightly below to near normal temperatures are favored in the weeks 3/4 timeframe.