

# Houston Pilots Forecast Package

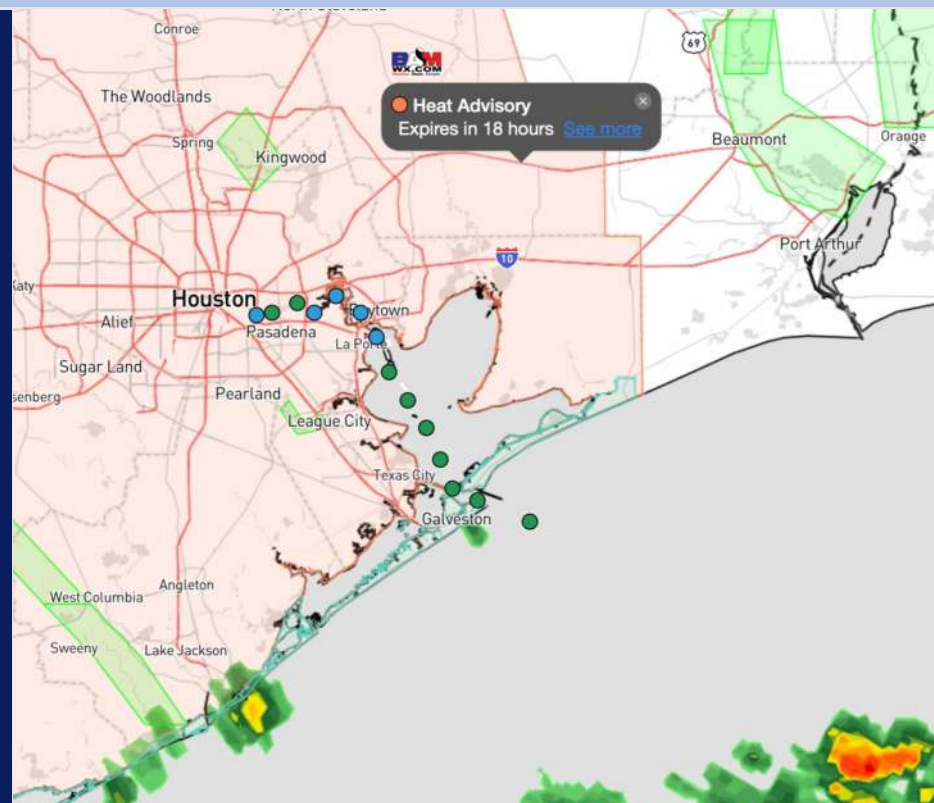


Updated: 1:30 PM CT  
Tuesday, July 9, 2024

Forecaster: Alyssa Elliott

## Weather Headlines

- A few scattered storms will continue through the early evening. Stronger storms will be capable of 25-30 kt gusts.
- Waves heights are back into the 1 – 3 ft range at the Boarding Station.
- **Low end, patchy fog risk WNW of Morgan's Point will need to be monitored for WED/THU AM.**



Current Radar: 1:30 PM CT



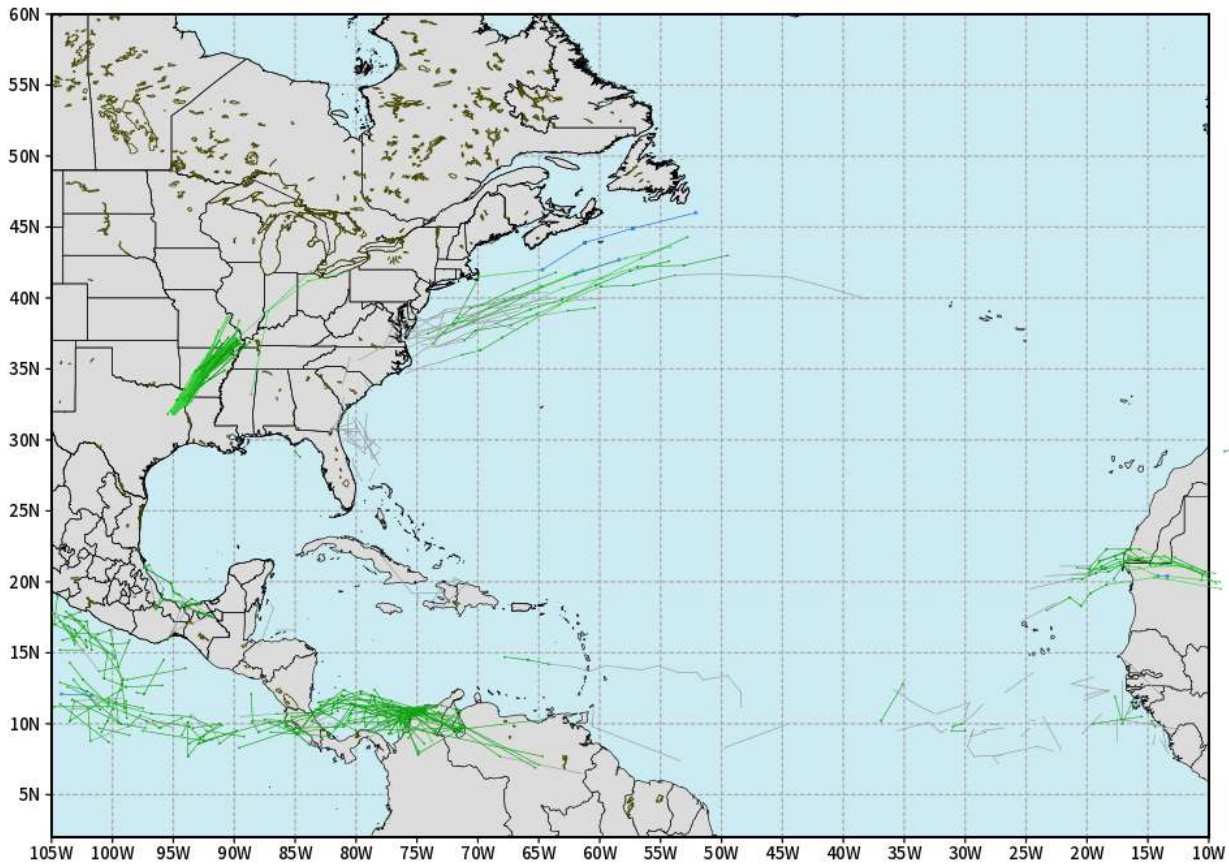
As always, please do not hesitate to reach out to us with any forecast questions via the chat option on Clarity or our on-call number, **(317)-560-8122** press **1** for forecast questions.

# Houston Pilots Tropical Update

## European Model Next 10 Days - Tropical Tracks

ECMWF ATLANTIC EPS Cyclone Locations --> Next [10-days]  
INIT: 00Z09JUL2024 --> UNTIL 00Z19JUL2024

- o-o ENSEMBLE MEAN
- o-o 1000 - 1010 hPa
- o-o 980 - 999 hPa
- o-o 960 - 979 hPa
- o-o 950 - 959 hPa
- o-o < 950 hPa



[weathermodels.com](http://weathermodels.com)

As Tropical Depression Beryl has moved out of the area we are not in favor of additional tropical threats over the next 10-15 days.

# Houston Pilots Visibility Chart (miles)



## Forecast Confidence



Time	Tue 2pm	Tue 3pm	Tue 4pm	Tue 5pm	Tue 6pm	Tue 7pm	Tue 8pm	Tue 9pm	Tue 10pm	Tue 11pm	Wed 12am	Wed 1am	Wed 2am	Wed 3am	Wed 4am	Wed 5am	Wed 6am	Wed 7am	Wed 8am	Wed 9am	Wed 10am	Wed 11am	Wed 12pm	Wed 1pm
610 Bridge	10	10	10	10	10	10	10	10	10	10	10	10	10	10	10	10	10	6	9	10	10	10	10	10
Kinder 1	10	10	10	10	10	10	10	10	10	10	10	10	10	10	10	10	10	6	9	10	10	10	10	10
Greens Bayou	10	10	10	10	10	10	10	10	10	10	10	10	10	10	10	10	10	6	9	10	10	10	10	10
Shell Crude	10	10	10	10	10	10	10	10	10	10	10	10	10	10	10	10	10	6	9	10	10	10	10	10
Lynchburg Ferries	10	10	10	10	10	10	10	10	10	10	10	10	10	10	10	10	10	6	9	10	10	10	10	10
Exxon 3	10	10	10	10	10	10	10	10	10	10	10	10	10	10	10	10	10	6	9	10	10	10	10	10
Morgans Point	10	10	10	10	10	10	10	10	10	10	10	10	10	10	10	10	10	6	9	10	10	10	10	10
75/76	10	10	10	10	10	10	10	10	10	10	10	10	10	10	10	10	10	6	9	10	10	10	10	10
63/64	10	10	10	10	10	10	10	10	10	10	10	10	10	10	10	10	10	6	9	10	10	10	10	10
51/52	10	10	10	10	10	10	10	10	10	10	10	10	10	10	10	10	10	7	10	10	10	10	10	10
37/38	10	10	10	10	10	10	10	10	10	10	10	10	10	10	10	10	10	9	10	10	10	10	10	10
25/26	10	10	10	10	10	10	10	10	10	10	10	10	10	10	10	10	10	7	10	10	10	10	10	10
11/12	10	10	10	10	10	10	10	10	10	10	10	10	10	10	10	10	10	7	10	10	10	10	10	10
1 & 2 Bravo	10	10	10	10	10	10	10	10	10	10	10	7	7	7	7	7	9	6	9	9	7	7	10	10

**NOTE: This is automated data that may/may not agree with the official B.A.M. thinking that's found on the daily slides or special visibility report slides. This data should be used as a guide only**

# Houston Pilots Wind Chart



## Forecast Confidence



## Example

Sustained wind 13 Knots  
Gusts 18 Knots  
Wind from the N

WS: 13  
G:18  
N

Time Knots	Tue 2pm	Tue 3pm	Tue 4pm	Tue 5pm	Tue 6pm	Tue 7pm	Tue 8pm	Tue 9pm	Tue 10pm	Tue 11pm	Wed 12am	Wed 1am	Wed 2am	Wed 3am	Wed 4am	Wed 5am	Wed 6am	Wed 7am	Wed 8am	Wed 9am	Wed 10am	Wed 11am	Wed 12pm	Wed 1pm
610 Bridge	5 9 NW	4 9 NNW	4 8 N	3 8 N	3 7 NNE	3 6 ENE	2 5 ESE	1 4 SSE	1 4 SSE	1 4 SSE	1 4 S	1 4 SW	1 4 W	1 4 WNW	1 4 NW	1 4 NW	1 4 NNW	2 5 NNW	2 5 N	2 5 N	3 6 N	3 7 N	3 8 NNE	4 9 NNE
Kinder 1	5 9 NW	4 9 NNW	4 8 N	3 8 N	3 7 NNE	3 6 ENE	2 5 ESE	1 4 SSE	1 4 SSE	1 4 SSE	1 4 S	1 4 SW	1 4 W	1 4 WNW	1 4 NW	1 4 NW	1 4 NNW	2 5 NNW	2 5 N	2 5 N	3 6 N	3 7 N	3 8 NNE	4 9 NNE
Greens Bayou	5 9 NW	4 9 NNW	4 8 N	3 8 N	3 7 NNE	3 6 ENE	2 5 ESE	1 4 SSE	1 4 SSE	1 4 S	1 4 SSW	1 4 SW	1 4 W	1 4 NW	1 4 NW	1 4 NNW	1 4 NNW	2 5 NNW	2 5 NNW	2 5 N	3 6 N	3 7 N	3 8 NNE	4 9 NNE
Shell Crude	4 9 NW	4 9 NNW	4 8 N	3 8 N	3 7 NNE	3 6 ENE	2 5 ESE	1 4 SSE	1 4 SSE	1 4 S	1 4 SSW	1 4 SW	1 4 W	1 4 WNW	1 4 NW	1 4 NNW	1 4 NNW	2 5 NNW	2 5 NNW	2 5 N	3 6 N	3 7 N	3 8 NNE	4 9 NNE
Lynchburg Ferries	4 9 NW	4 9 NNW	4 8 N	3 8 N	3 7 NNE	3 6 NE	1 4 SE	1 4 SE	1 4 SSE	1 4 S	1 4 SSW	1 4 SW	1 4 W	1 4 NW	1 4 NW	1 4 NNW	1 4 NNW	1 4 NNW	2 5 NNW	2 5 N	2 5 N	3 6 N	3 7 NNE	4 9 NNE
Exxon 3	6 11 NNW	6 11 NNW	5 10 N	5 10 N	5 8 NE	5 7 ESE	4 7 SSE	4 6 SSE	3 6 S	3 6 S	3 6 SSW	3 6 SSW	3 6 W	3 6 NW	3 6 NW	4 6 NNW	4 6 NNW	4 6 NNW	4 6 NNW	4 6 N	4 6 N	4 6 N	5 8 NNE	5 10 NNE
Morgans Point	5 10 NW	5 10 NNW	5 9 N	5 9 NE	5 8 E	5 7 SE	4 6 SSE	4 6 S	3 6 S	3 6 SSW	3 6 SW	3 6 W	3 6 NW	3 6 NW	4 6 NNW	4 6 NNW	4 6 NNW	4 6 NNW	4 6 N	4 6 N	4 6 N	4 6 N	5 8 NNE	5 10 NNE
75/76	5 9 NNW	5 9 NNW	5 9 NNE	5 9 SE	5 8 SSE	5 7 S	5 7 S	5 7 S	5 6 SSW	5 6 SSW	5 6 SW	5 6 W	5 6 WSW	5 6 W	5 7 NW	5 7 NW	5 7 NNW	5 7 NNW	5 7 NNW	5 7 N	5 7 N	5 8 NNE	5 8 NNE	5 10 ENE
63/64	4 9 NNW	4 9 NNW	4 8 SE	4 8 SE	4 7 SSE	4 7 S	4 7 S	4 7 S	4 6 SSW	4 6 SSW	4 6 SW	4 6 WSW	4 6 W	4 6 WNW	4 7 NW	4 7 NW	4 7 NNW	4 7 NNW	4 7 NNW	4 7 N	4 7 N	4 7 NNE	4 8 NNE	4 9 NE
51/52	3 8 N	3 8 NNE	4 8 ESE	4 8 SE	4 8 SSE	4 8 S	4 8 S	4 8 S	4 7 SSW	4 7 SSW	4 6 SW	4 6 WSW	4 6 W	4 6 WNW	4 7 NW	4 7 NW	4 7 NNW	4 7 NNW	4 7 NNW	4 7 N	4 7 N	4 8 NNE	4 8 NNE	4 9 NE
37/38	3 7 N	3 7 ESE	4 8 ESE	4 8 SE	4 8 S	4 8 S	4 8 S	4 8 S	4 7 SSW	4 7 SSW	4 6 SW	4 6 WSW	4 6 W	4 6 WNW	4 7 NW	4 7 NW	4 7 NNW	4 7 NNW	4 7 NNW	4 7 N	4 7 N	4 8 NNE	4 8 NNE	4 9 NNE
25/26	4 7 N	4 7 SW	4 7 SE	4 8 SSE	4 8 S	4 8 S	4 8 S	4 8 S	4 7 SSW	4 7 SSW	4 6 SW	4 6 WSW	4 6 W	4 6 WNW	4 7 NW	4 7 NW	4 7 NNW	4 7 NNW	4 7 NNW	4 7 N	4 7 N	4 8 NNE	4 8 NNE	4 9 NE
11/12	4 7 NNE	4 7 NNW	4 7 SSE	4 8 SSE	4 8 S	4 8 S	4 8 S	4 8 S	4 7 SSW	4 7 SSW	4 6 SW	4 6 WSW	4 6 W	4 6 WNW	4 7 NW	4 7 NW	4 7 NNW	4 7 NNW	4 7 NNW	4 7 N	4 7 N	4 8 NNE	4 8 NNE	4 9 NE
1 & 2 Bravo	4 7 N	4 6 NW	4 7 WSW	4 7 S	4 8 S	4 8 S	4 8 S	4 8 S	4 8 S	4 8 S	4 8 S	4 7 SSW	4 7 SW	4 7 WSW	4 8 W	4 8 WNW	4 8 WNW	4 8 NW	4 8 NNW	4 8 N	4 8 N	4 9 N	4 8 NNE	4 8 NE

**NOTE: This is automated data that may/may not agree with the official BAM thinking that's found on the daily slides. This data should be used as a guide only.**



# Houston Pilots: Tue. 7/9/2024



## Forecast Discussion

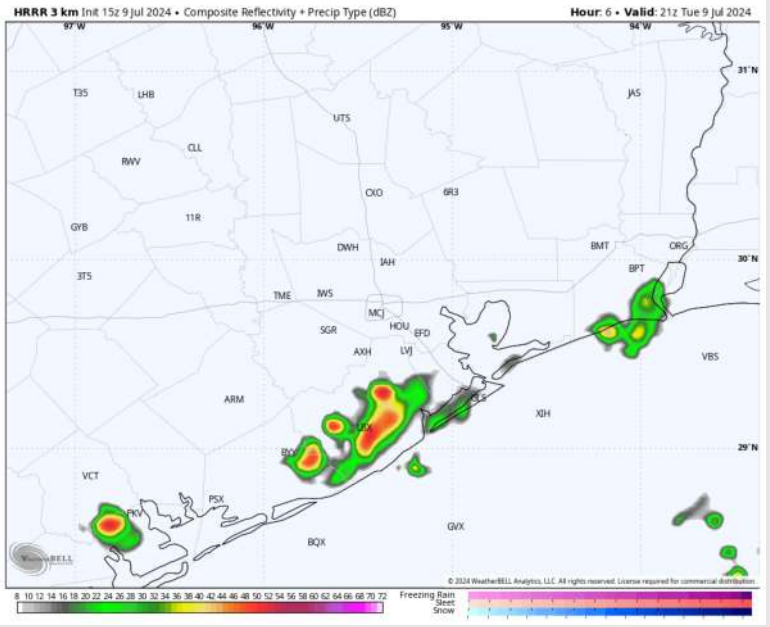
**Precip:** A few sporadic showers and storms will continue to work across the area through 6 PM today. A few storms will be capable of **25-30 kt gusts**.

**Wind:** Winds generally out of the N will become variable after 6 – 7 PM and remain variable for the PM . **N of Morgan's Point:** Winds be at 2-7 kts throughout the day. **S of Morgan's Point:** Winds at 5 – 10 kts for the rest of the day. **Gusts of 25-30 kts will be possible under scattered thunderstorms.**

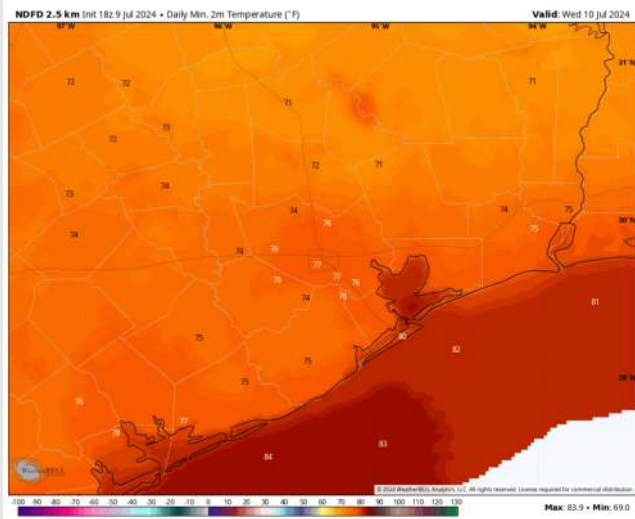
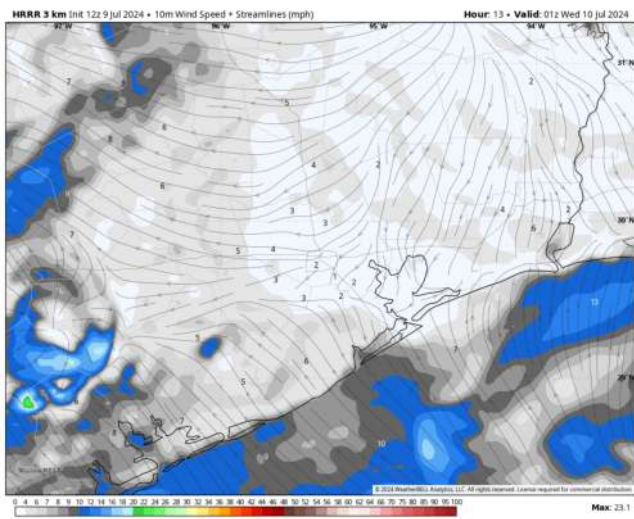
**Low Temps:** **N of Morgan's Point:** Mid 70 F. **S of Morgan's Point:** Low to mid 80s F.

**Visibility:** Fog is not favored for today however heavier downpours can result in reduced visibilities. Patchy fog risk WNW of stations WED AM.

## Precip Image: 4 PM CT



Wind Speed:  
8 PM CT



Low Temps  
WED AM

## Forecast Discussion

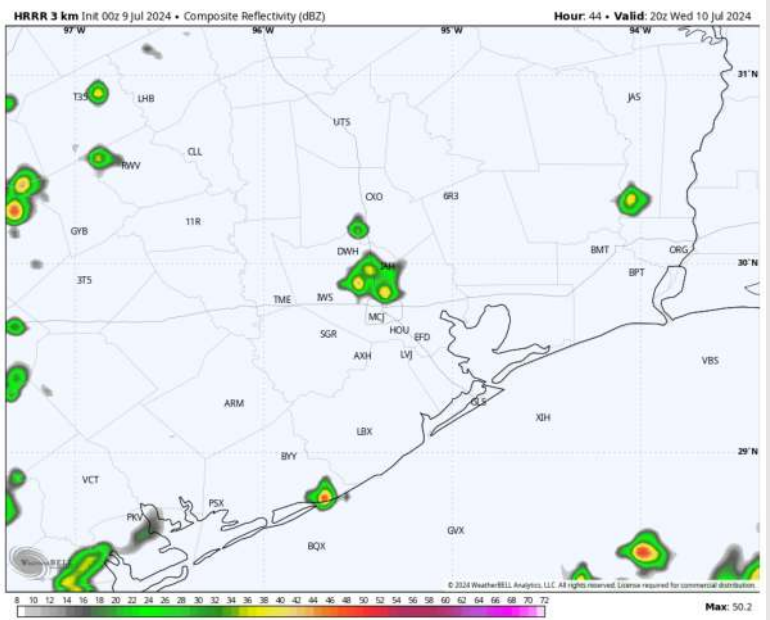
**Precip:** Dry conditions favored for the AM. Isolated showers (20%) are possible after 12 PM through 6 PM. The remainder of the night is expected to be dry.

**Wind:** Winds start out of the NW gradually rotate clockwise through 4 PM and settle out of the S/SE through the remainder of Wednesday. **N of Morgan's Point:** Winds 3-7 kts throughout Wednesday. **S of Morgan's Point:** Winds at 5-10 kts throughout the day.

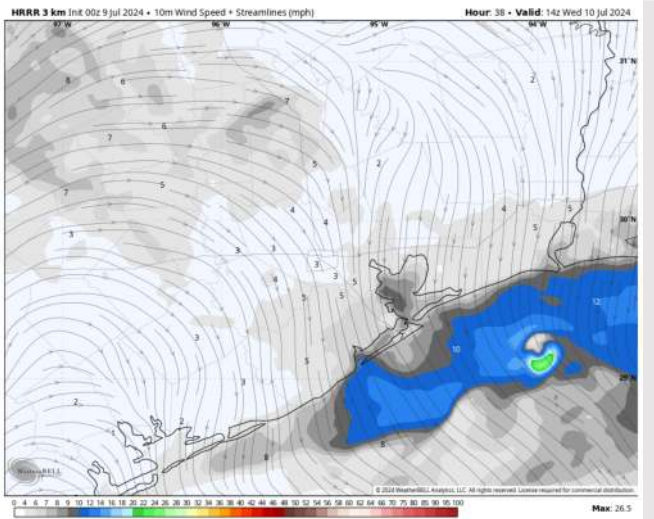
**High Temps:** **N of Morgan's Point:** Low 90s F. **S of Morgan's Point:** Upper 80s F.

**Visibility:** Monitoring a low-end risk for patchy fog WNW of Houston WED AM. At this time the fog risk does not look to directly impact stations.

## Precip Image: 3 PM CT



Wind Speed 9 AM CT



High Temps Wednesday



# Houston Pilots: Thu. 7/11/2024



## Forecast Discussion

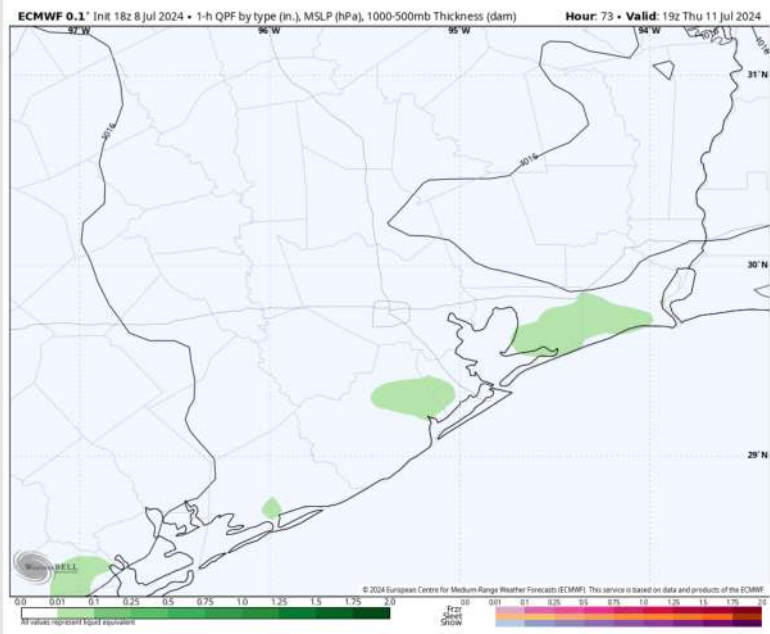
**Precip:** Isolated showers will work across the area beginning at 5-6 AM CT THU, slowly working Northward throughout the area during the day. Dry conditions are expected after 7 PM.

**Wind:** Winds will be out of the S/SW through 12 PM before shifting to out of the S/SE. **N of Morgan's Point:** Winds at 2-7 kts throughout the day THU. **S of Morgan's Point:** Winds at 4-9 kts for the entire day

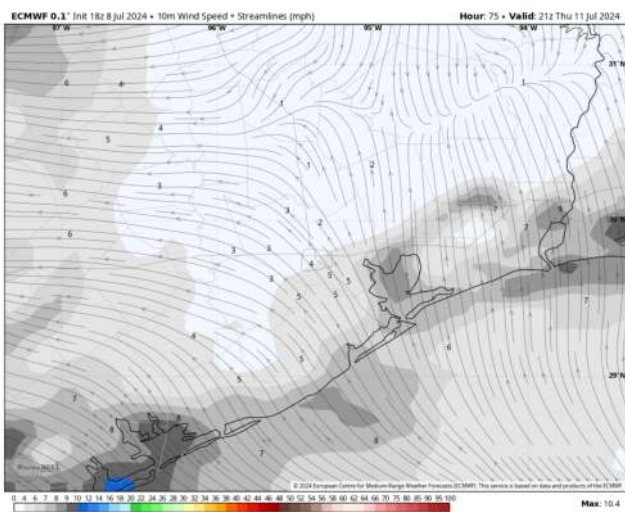
**High Temps:** **N of Morgan's Point:** Near 90 F. **S of Morgan's Point:** Upper 80s F.

**Visibility:** Monitoring a low-end risk for patchy fog N of Morgan's Point THU AM.

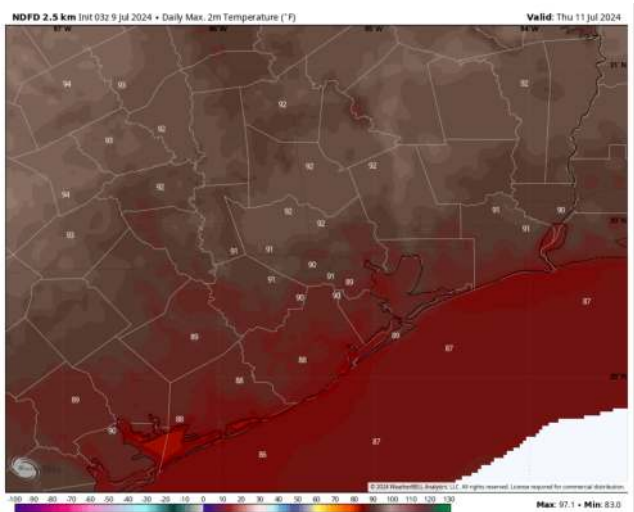
## Precip Image: 2 PM CT



Wind Speed:  
4 PM CT

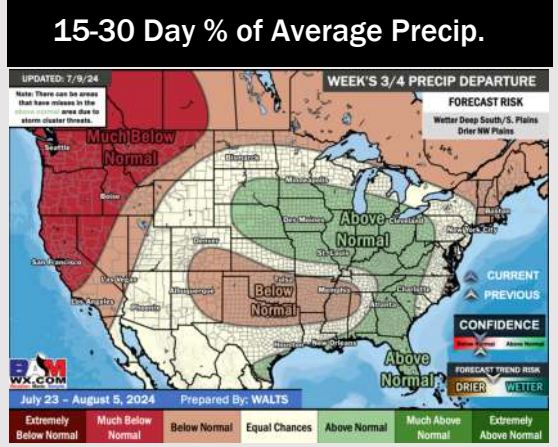
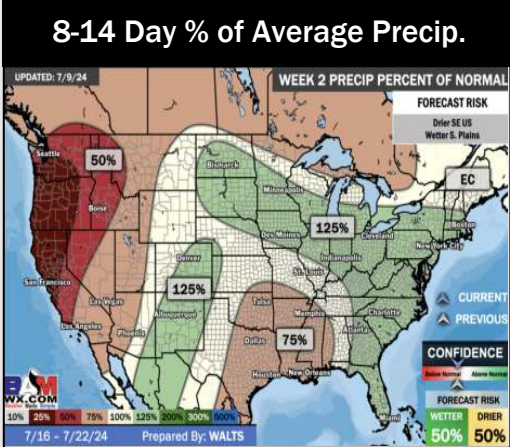
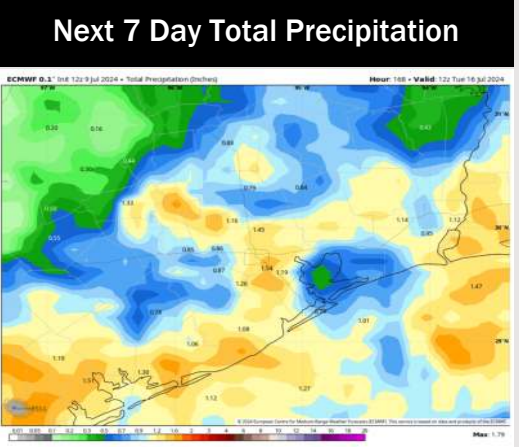
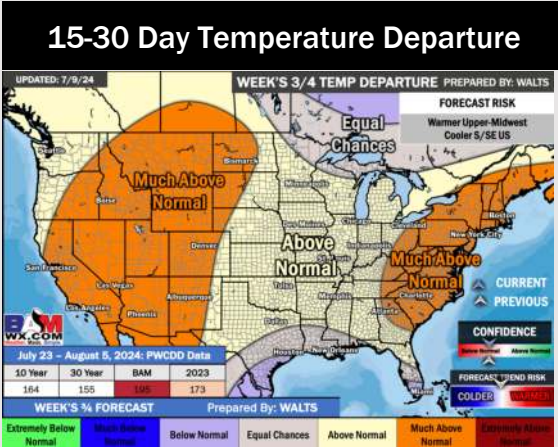
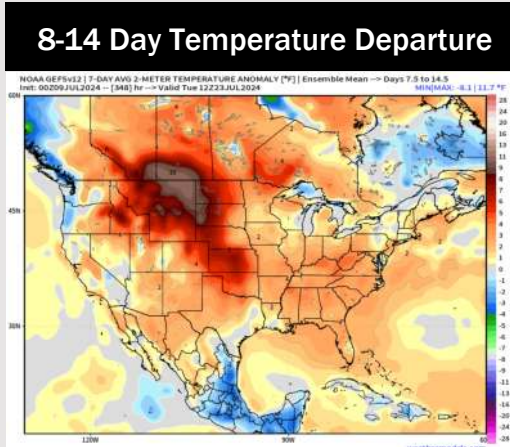
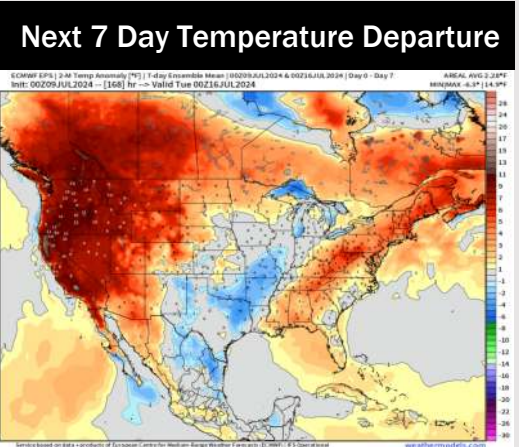


High Temps  
Thursday





# Houston Pilots: 7/9/24



- Temps are expected to be seasonable/slightly below normal for Week 1 timeframe. Scattered rain/storms will continue to work across the area over the coming days for Week 1
- Below normal precipitation are favored for the week 2 timeframe. Near normal temperatures are favored for week 2.
- Above normal chances for precipitation and slightly below to near normal temperatures are favored in the weeks 3/4 timeframe.