

Houston Pilots Forecast Package



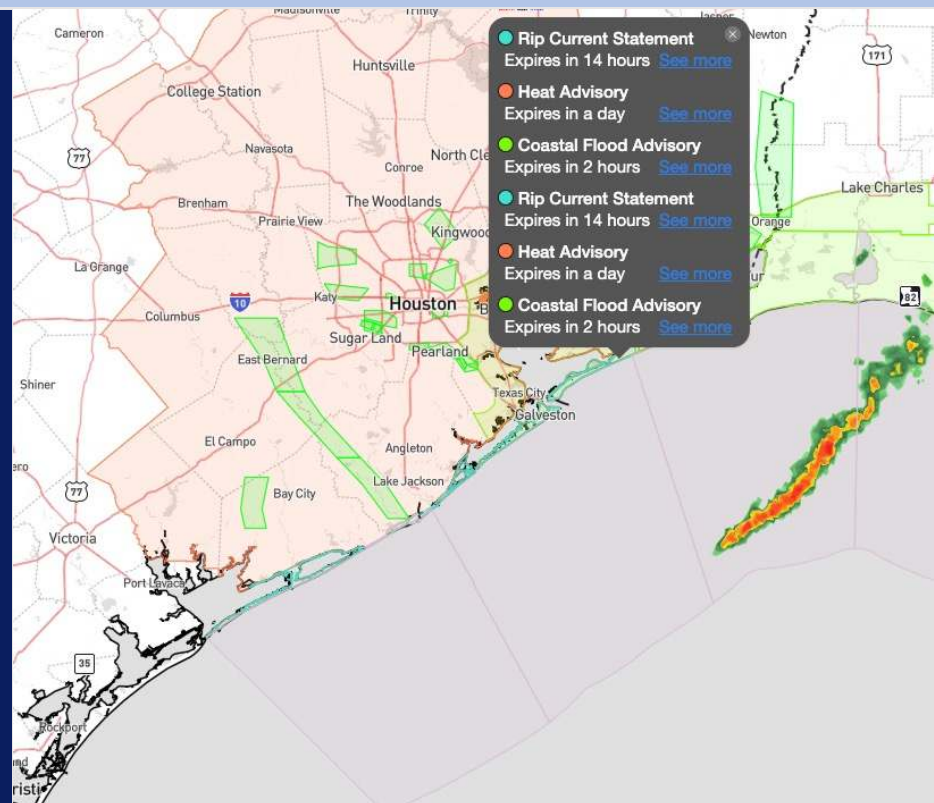
Updated: 11:00 PM CT

Monday, July 8, 2024

Forecaster: Jonathan Kipper

Weather Headlines

- As Tropical Depression Beryl has moved out of the area, wind gusts will look to remain calmer over the coming days (winds seldom exceeding 15kts)
- With wave heights near the Boarding Station falling to below 6 feet and continuing to drop throughout today, **Zulu Port Conditions are no longer in effect.**
- **Patchy fog N of Morgan's Point will need to be monitored for WED/THU AM.**

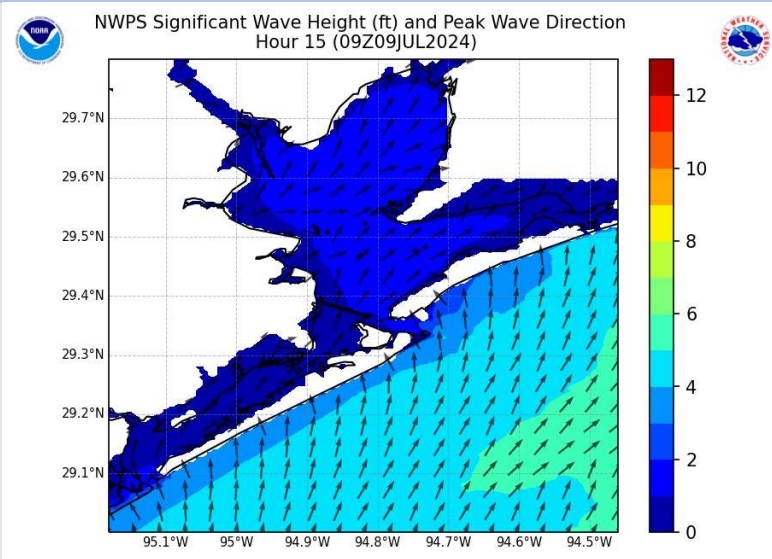


Current Radar: 11:00 PM CT



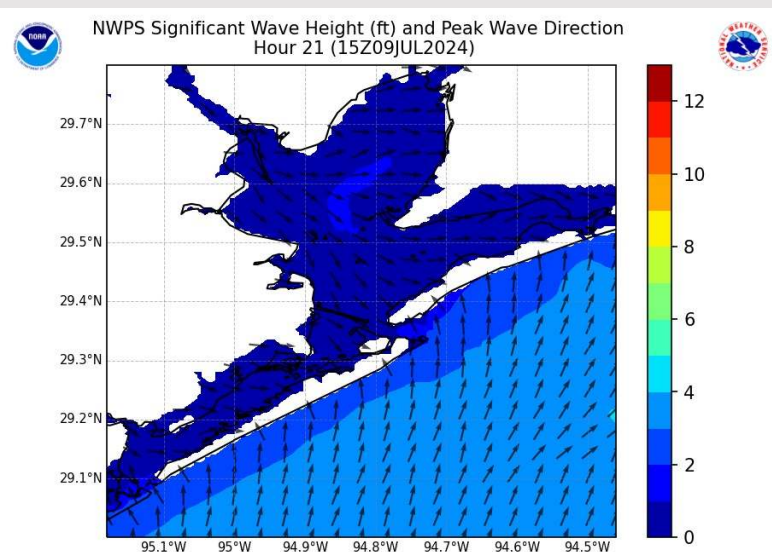
As always, please do not hesitate to reach out to us with any forecast questions via the chat option on Clarity or our on-call number, **(317)-560-8122** press 1 for forecast questions.

Wave Height Forecast Update



4 AM CT TUE

Wave heights will continue to decrease towards the Boarding Station throughout the day.



10 AM CT TUE

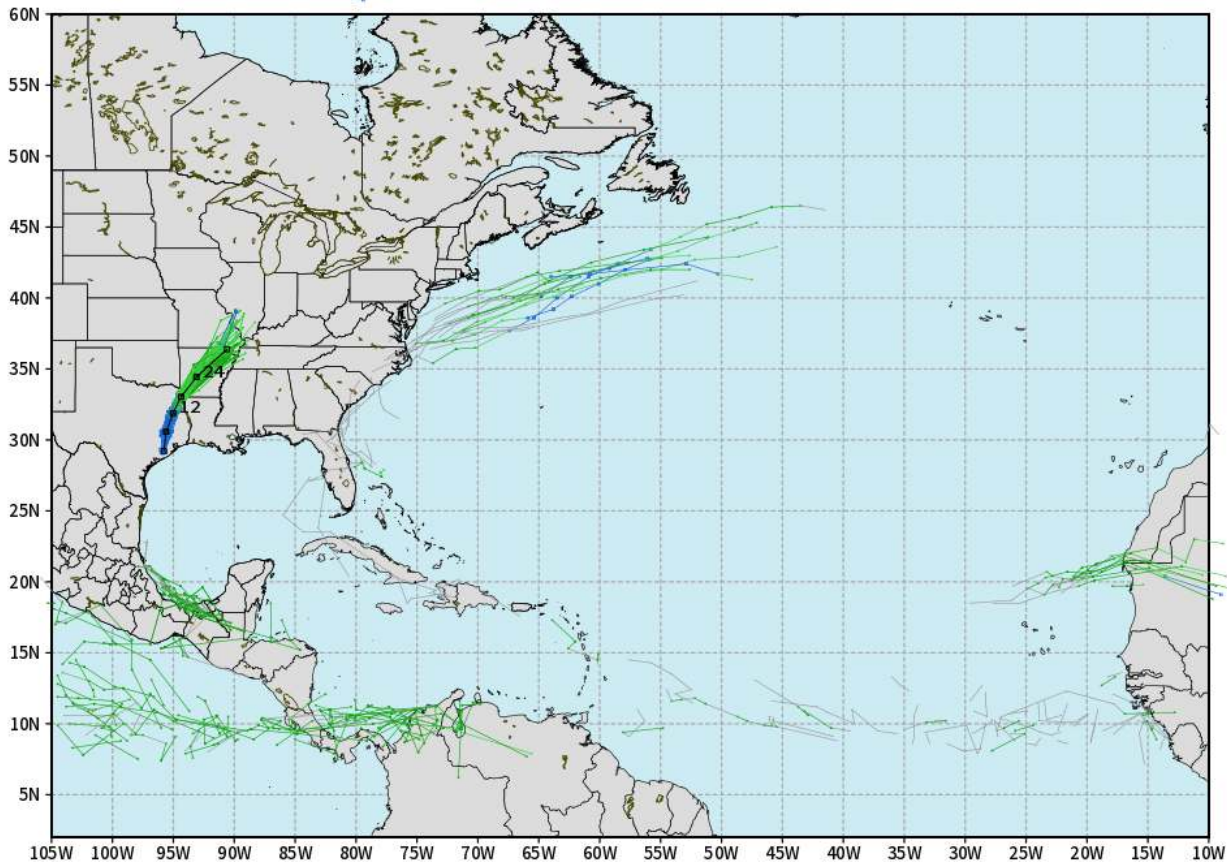
Heights expected to drop below 3 ft after 10 AM CT.

Houston Pilots Tropical Update

European Model Next 10 Days - Tropical Tracks

ECMWF ATLANTIC EPS Cyclone Locations --> Next [10-days]
INIT: 12Z08JUL2024 --> UNTIL 12Z18JUL2024

o-o ENSEMBLE MEAN
o-o 1000 - 1010 hPa
o-o 980 - 999 hPa
o-o 960 - 979 hPa
o-o 950 - 959 hPa
o-o < 950 hPa



weathermodels.com

As Tropical Depression Beryl has moved out of the area we are not in favor of additional tropical threats over the next 10-15 days.

Houston Pilots Visibility Chart (miles)



Time	Mon 11pm	Tue 12am	Tue 1am	Tue 2am	Tue 3am	Tue 4am	Tue 5am	Tue 6am	Tue 7am	Tue 8am	Tue 9am	Tue 10am	Tue 11am	Tue 12pm	Tue 1pm	Tue 2pm	Tue 3pm	Tue 4pm	Tue 5pm	Tue 6pm	Tue 7pm	Tue 8pm	Tue 9pm	Tue 10pm
610 Bridge	10	10	10	10	10	10	10	10	10	10	10	10	10	10	10	10	10	10	10	10	10	10	10	10
Kinder 1	10	10	10	10	10	10	10	10	10	10	10	10	10	10	10	10	10	10	10	10	10	10	10	10
Greens Bayou	10	10	10	10	10	10	10	10	10	10	10	10	10	10	10	10	10	10	10	10	10	10	10	10
Shell Crude	10	10	10	10	10	10	10	10	10	10	10	10	10	10	10	10	10	10	10	10	10	10	10	10
Lynchburg Ferries	10	10	10	10	10	10	10	10	10	10	10	10	10	10	10	10	10	10	10	10	10	10	10	10
Exxon 3	10	10	10	10	10	10	10	10	10	10	10	10	10	10	10	10	10	10	10	10	10	10	10	10
Morgans Point	10	10	10	10	10	10	10	10	10	10	10	10	10	10	10	10	10	10	10	10	10	10	10	10
75/76	10	10	10	10	10	10	10	10	10	10	10	10	10	10	10	10	10	10	10	10	10	10	10	10
63/64	10	10	10	10	10	10	10	10	10	10	10	10	10	10	10	10	10	10	10	10	10	10	10	10
51/52	10	10	10	10	10	10	10	10	10	10	10	10	10	10	10	10	10	10	10	10	10	10	10	10
37/38	10	10	10	10	10	10	10	10	10	10	10	10	10	10	10	10	10	10	10	10	10	10	10	10
25/26	10	10	10	10	10	10	10	10	10	10	10	10	10	10	10	10	10	10	10	10	10	10	10	10
11/12	10	10	10	10	10	10	10	10	10	10	10	10	10	10	10	10	10	10	10	10	10	10	10	10
1 & 2 Bravo	7	10	10	10	10	10	10	10	10	10	10	10	10	9	10	10	9	7	7	6	7	6	10	10

NOTE: This is automated data that may/may not agree with the official BAM thinking that's found on the daily slides or special visibility report slides. This data should be used as a guide only

Houston Pilots Wind Chart



Sustained wind 13 Knots
Gusts 18 Knots
Wind from the N

Example

WS: 13
G:18
N

Time Knots	Mon 11pm	Tue 12am	Tue 1am	Tue 2am	Tue 3am	Tue 4am	Tue 5am	Tue 6am	Tue 7am	Tue 8am	Tue 9am	Tue 10am	Tue 11am	Tue 12pm	Tue 1pm	Tue 2pm	Tue 3pm	Tue 4pm	Tue 5pm	Tue 6pm	Tue 7pm	Tue 8pm	Tue 9pm	Tue 10pm	
610 Bridge	5	5	5	5	4	4	4	3	4	4	4	4	5	5	5	5	5	4	3	3	3	2	1		
	12	11	10	10	9	9	9	8	8	8	9	9	10	10	10	10	10	8	8	7	6	4	4		
	WSW	W	W	W	W	W	WNW	WNW	NW	NNW	NW	NW	NW	NW	NW	NW	NNW	NNW	NNE	ENE	E	SE	SSE		
Kinder 1	5	5	5	5	4	4	4	3	3	4	4	4	5	5	5	5	5	4	3	3	2	2	1		
	12	11	10	10	9	9	9	8	8	8	9	9	10	10	10	10	10	8	8	7	5	4	4		
	WSW	W	W	W	W	W	WNW	WNW	NW	NNW	NW	NW	NW	NW	NW	NW	NNW	N	NNE	ENE	E	SE	SSE		
Greens Bayou	6	5	5	5	4	4	4	3	3	3	4	4	5	5	5	5	5	4	4	3	3	2	1		
	13	11	11	10	9	9	9	8	8	8	9	9	10	10	10	10	10	9	8	7	6	4	4		
	WSW	W	W	W	W	W	WNW	WNW	NW	NNW	NW	NW	NW	WNW	NW	NW	NNW	NNW	N	NNE	ENE	E	SE	SSE	
Shell Crude	6	5	5	5	4	4	4	3	3	4	4	4	5	5	5	5	5	5	4	3	3	2	1		
	13	11	11	10	9	9	9	8	8	8	9	9	10	10	10	10	10	9	8	7	6	4	4		
	WSW	W	W	W	W	W	WNW	WNW	NW	NNW	NW	NW	NW	WNW	NW	NW	NNW	NNW	N	NNE	ENE	ESE	SSE	S	
Lynchburg Ferries	6	5	5	4	4	4	4	3	3	3	4	4	5	5	5	5	5	4	4	3	2	2	1		
	13	12	11	10	9	9	9	8	8	8	9	10	10	10	10	10	9	10	9	8	7	5	4	4	
	WSW	W	W	W	W	W	WNW	WNW	NW	NNW	NW	NW	NW	NW	NW	NW	NNW	NNW	N	NNE	ENE	E	SE	SSE	
Exxon 3	10	9	9	9	8	8	7	7	7	7	7	7	6	6	6	6	7	7	7	6	6	5	4	4	
	15	14	13	12	12	12	11	11	11	10	10	10	11	11	11	11	12	12	12	10	10	8	7	6	6
	WSW	WSW	W	W	W	W	WNW	WNW	NW	NNW	NW	NW	NW	NW	NW	NW	NNW	NNW	N	NE	SE	SE	SSE	SSE	
Morgans Point	10	9	9	8	8	8	7	7	7	7	6	6	6	6	6	6	7	7	6	6	5	5	4	4	
	15	14	13	12	12	12	11	11	11	10	10	11	11	11	11	11	11	11	10	10	8	7	6	6	
	WSW	WSW	W	W	W	WNW	WNW	WNW	NW	NW	NW	NW	NW	NW	WNW	NW	NW	NW	NNW	N	E	SE	SE	SSE	SSE
75/76	11	11	10	9	9	9	9	8	8	7	7	7	6	6	5	6	6	6	5	5	5	5	5	5	
	15	15	15	14	14	14	13	13	12	12	12	12	11	11	11	11	11	11	10	10	8	8	7	7	
	WSW	WSW	W	W	W	W	WNW	WNW	NW	NW	NW	NW	NW	NW	NW	NNW	NNW	N	NE	E	SSE	SSE	S	SSE	
63/64	11	11	10	9	9	9	9	9	9	8	7	7	6	5	5	5	5	5	5	5	5	5	5	5	
	16	15	15	14	14	14	13	13	13	12	12	12	11	11	10	10	10	10	9	9	8	8	8	8	
	WSW	WSW	W	W	W	W	WNW	WNW	NW	NW	NW	NW	NW	NW	NNW	NNW	NNW	N	NE	SE	SSE	SSE	S	S	
51/52	11	11	10	10	9	9	9	9	9	8	7	7	7	6	5	5	5	5	5	5	5	5	5	5	
	16	15	15	14	14	14	13	13	13	12	12	12	11	11	10	10	10	9	9	9	8	8	8	8	
	WSW	WSW	W	W	W	W	WNW	WNW	NW	NNW	NW	NW	NW	NW	NNW	NNW	NNW	NNE	E	SE	S	S	S	S	
37/38	11	11	10	10	9	9	9	9	9	8	7	7	7	6	5	5	5	5	5	5	5	5	5	5	
	16	15	15	14	14	14	13	13	13	12	12	12	11	10	9	9	8	9	8	9	8	8	8	8	
	WSW	WSW	WSW	W	W	W	WNW	WNW	NW	NW	NW	NW	NW	NNW	NNW	NNW	N	NNE	E	SE	S	S	S	S	
25/26	11	10	10	9	9	9	9	8	8	7	7	7	7	6	5	5	5	5	5	5	5	5	5	5	
	16	15	15	14	14	14	13	13	13	12	12	12	11	10	9	9	8	9	8	9	8	8	8	8	
	WSW	WSW	WSW	WSW	W	W	W	WNW	WNW	NW	NW	NW	NNW	NNW	NNW	N	N	NNE	ENE	SSE	S	S	S	S	
11/12	10	9	9	9	9	8	8	8	7	7	7	7	7	6	6	5	5	5	5	5	5	5	5	5	
	16	15	15	14	14	14	13	13	13	12	12	11	11	10	9	9	8	9	8	9	8	8	8	8	
	WSW	WSW	WSW	W	W	W	W	WNW	WNW	NW	NW	NW	NNW	NNW	NNW	NNW	N	N	ENE	SSE	S	S	S	S	
1 & 2 Bravo	13	13	12	11	11	11	11	10	10	9	9	8	7	7	5	5	5	5	5	5	5	5	5	5	
	19	18	17	16	16	15	15	14	14	13	13	13	12	11	9	9	8	9	8	9	9	9	9	9	
	SW	WSW	WSW	WSW	WSW	W	W	W	WNW	NW	NW	NW	NW	NW	NW	NW	NW	NW	W	S	S	S	S	S	

NOTE: This is automated data that may/may not agree with the official BAM thinking that's found on the daily slides.
This data should be used as a guide only.

Houston Pilots: Tue. 7/9/2024

Forecast Discussion

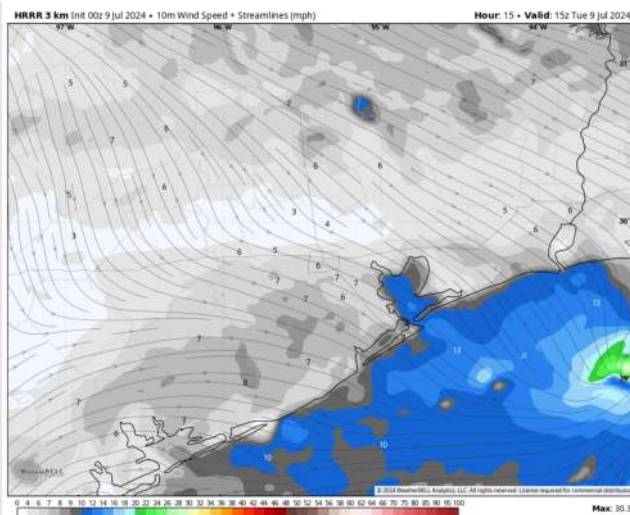
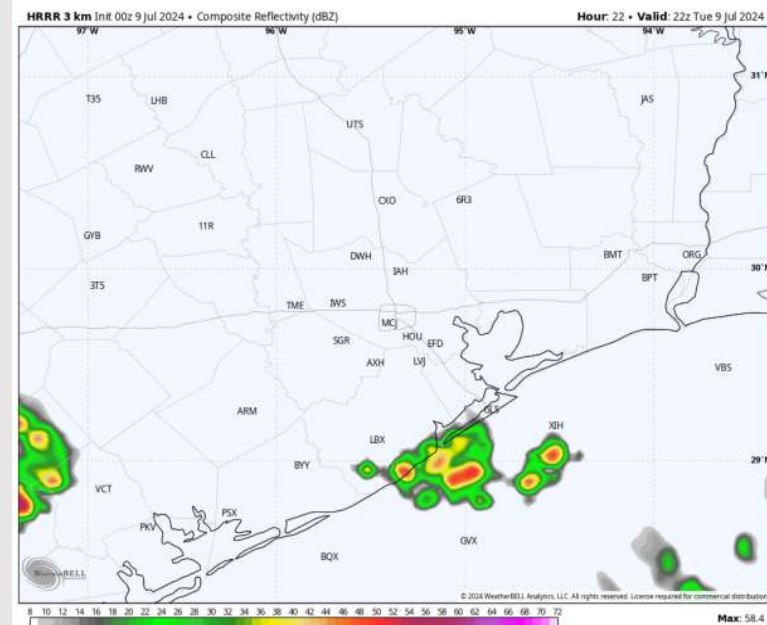
Precip: A few bands of scattered showers/storms will linger behind Tropical Storm Beryl throughout the day, predominantly S of Station 11/12. Main risks with thunderstorms will be lightning and **25-30 kt gusts**.

Wind: Winds will be out of the SW, gradually shifting to out of the W/NW by 5 AM. Winds remain there until 4 PM before becoming variable through the rest of the evening. **N of Morgan's Point:** Winds be at 4-9 kts throughout the day. **S of Morgan's Point:** Winds begin the day at 10-15 kts and will be on a gradual decline through 10 AM, settling at 6-11 kts. **Gusts of 25-30 kts will be possible for all stations with scattered thunderstorms.**

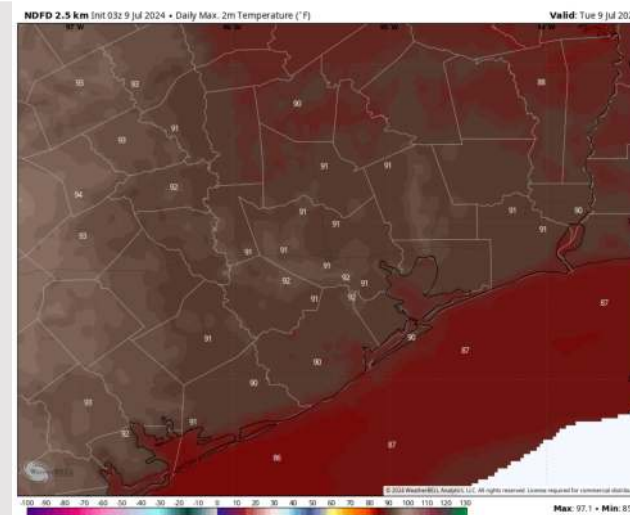
High Temps: **N of Morgan's Point:** Low 90 F. **S of Morgan's Point:** Upper 80s F/Near 90 F.

Visibility: Fog is not favored for today however heavier downpours can result in reduced visibilities.

Precip Image: 5 PM CT



Wind Speed:
10 AM CT



High Temps
Today

Houston Pilots: Wed. 7/10/2024

Forecast Discussion

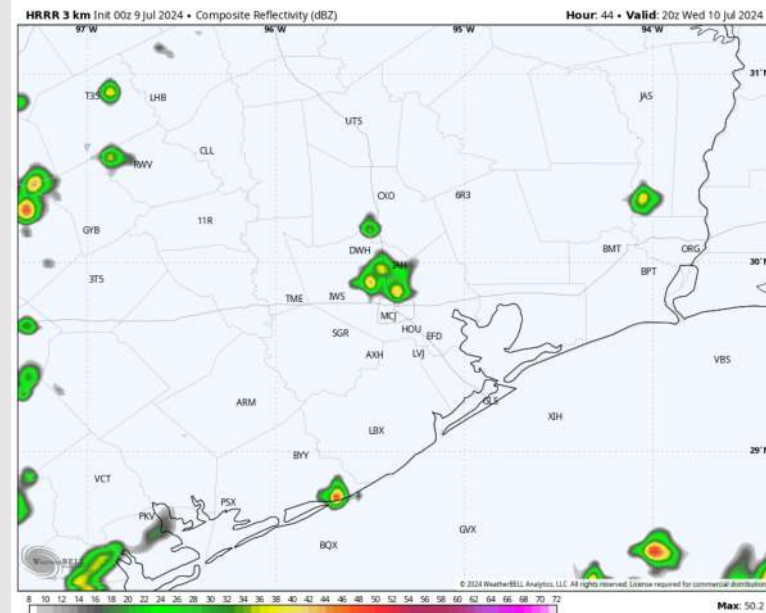
Precip: Dry conditions favored for the AM. Isolated showers (20%) are possible after 12 PM through 6 PM. The remainder of the night is expected to be dry.

Wind: Winds start out of the NW gradually rotate clockwise through 4 PM and settle out of the S/SE through the remainder of Wednesday. **N of Morgan's Point:** Winds 3-7 kts throughout Wednesday. **S of Morgan's Point:** Winds at 5-10 kts throughout the day.

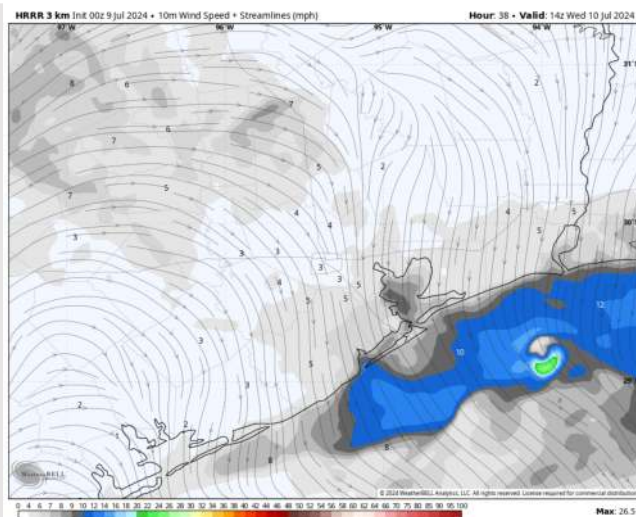
High Temps: **N of Morgan's Point:** Low 90s F. **S of Morgan's Point:** Upper 80s F.

Visibility: Monitoring a low-end risk for patchy fog N of Morgan's Point WED AM.

Precip Image: 3 PM CT



Wind Speed
9 AM CT



High Temps
Wednesday

Houston Pilots: Thu. 7/11/2024

Forecast Discussion

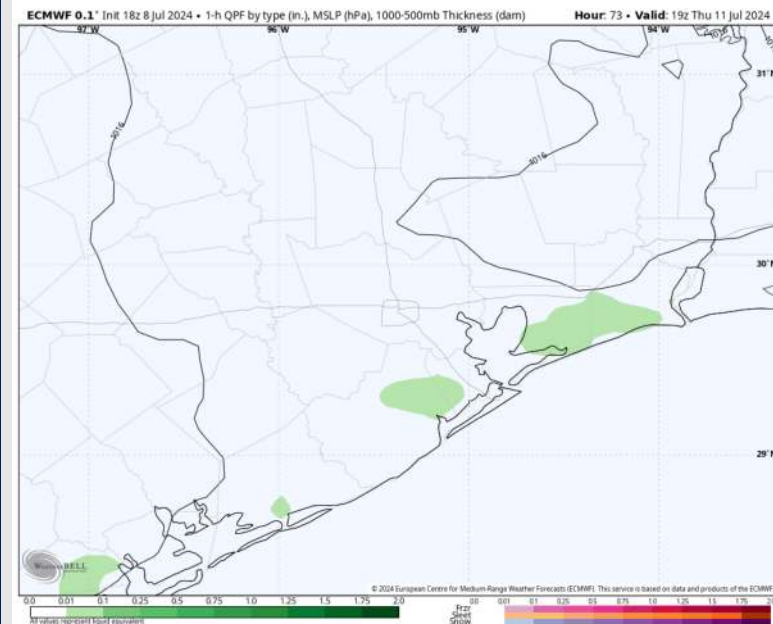
Precip: Isolated showers will work across the area beginning at 5-6 AM CT THU, slowly working Northward throughout the area during the day. Dry conditions are expected after 7 PM.

Wind: Winds will be out of the S/SW through 12 PM before shifting to out of the S/SE. **N of Morgan's Point:** Winds at 2-7 kts throughout the day THU. **S of Morgan's Point:** Winds at 4-9 kts for the entire day

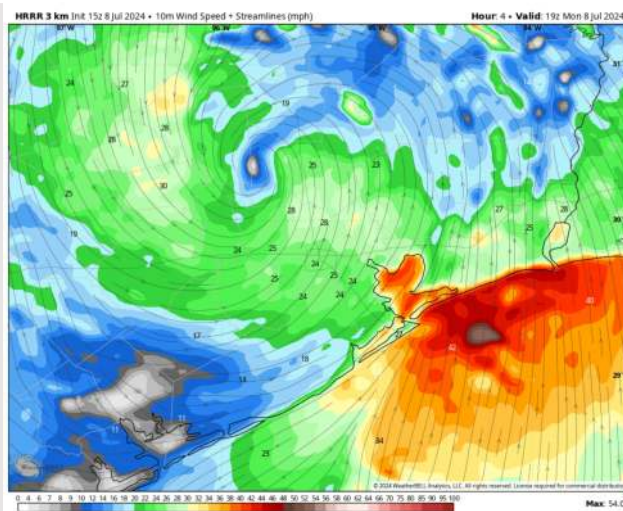
High Temps: **N of Morgan's Point:** Near 90 F. **S of Morgan's Point:** Upper 80s F.

Visibility: Monitoring a low-end risk for patchy fog N of Morgan's Point THU AM.

Precip Image: 2 PM CT



Wind Speed:
2 PM CT



High Temps
Thursday

