

PITTSBURGH PIRATES

Thursday, June 6, 2024

2:55 PM ET Weather Forecast



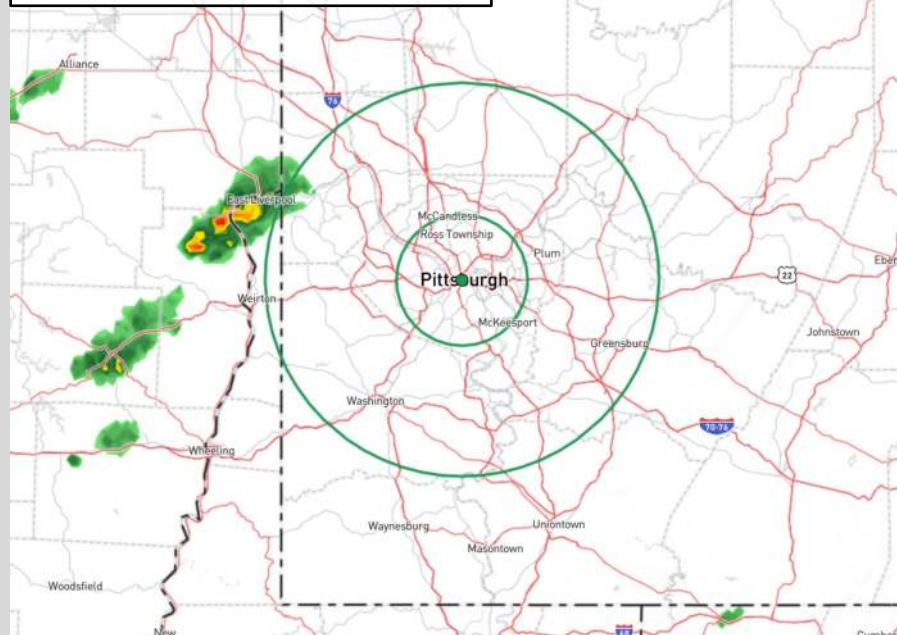
HOUR BY HOUR FORECAST:

Time	Thu 6h 3pm	Thu 6h 4pm	Thu 6h 5pm	Thu 6h 6pm	Thu 6h 7pm	Thu 6h 8pm	Thu 6h 9pm	Thu 6h 10pm	Thu 6h 11pm	Fri 7h 12am	Fri 7h 1am	Fri 7h 2am	Fri 7h 3am	Fri 7h 4am	Fri 7h 5am	Fri 7h 6am	Fri 7h 7am	Fri 7h 8am	Fri 7h 9am	Fri 7h 10am
Cloud %	59%	50%	59%	58%	52%	51%	46%	28%	20%	23%	23%	29%	13%	15%	15%	23%	11%	13%	18%	13%
Pop %	10%	20%	40%	40%	20%	20%	10%	0%	0%	0%	0%	0%	0%	0%	0%	0%	0%	0%	0%	0%
Precipitation Accumulative	0.01	0.02	0.05	0.06	0.12	0.15	0.15	0.15	0.15	0.15	0.15	0.15	0.15	0.15	0.15	0.15	0.15	0.15	0.15	0.15
Accum (in): Max Min Most Likely	0 0 0	0 0 0	0 0.01 0	0 0.01 0	0 0.03 0	0 0.03 0	0 0.03 0	0 0.03 0	0 0.03 0	0 0.03 0	0 0.03 0	0 0.03 0	0 0.03 0	0 0.03 0	0 0.03 0	0 0.03 0	0 0.03 0	0 0.03 0	0 0.03 0	0 0.03 0
RH: 53%	56%	55%	58%	61%	66%	73%	76%	77%	79%	81%	82%	84%	84%	84%	83%	82%	75%	68%	63%	
Temperature	79°	78°	78°	76°	74°	72°	70°	68°	67°	65°	64°	63°	62°	61°	60°	60°	60°	63°	65°	68°
Air °F Dew Point °F	61°	61°	60°	60°	60°	61°	61°	60°	59°	58°	58°	57°	57°	56°	55°	54°	55°	55°	55°	59°
Apparent	79°	78°	78°	76°	74°	73°	70°	68°	67°	65°	64°	63°	62°	61°	60°	60°	60°	63°	66°	68°
Feels Like °F Wet Bulb GT °F	73°	71°	70°	70°	69°	68°	56°	56°	54°	53°	53°	52°	51°	51°	50°	49°	59°	60°	62°	63°
Wind	→	→	→	→	→	→	↗	↗	↗	↗	↗	↗	↗	↗	↗	↗	→	→	→	→
Sustained (mph) Gust (mph)	9 20	9 21	9 20	8 19	7 16	5 14	4 11	3 10	3 9	3 8	3 8	3 9	3 10	3 11	4 12	5 13	5 14	6 15	7 18	9 21
Visibility	10.1 mi	10.1 mi	10.1 mi	10.1 mi	10.1 mi	10.1 mi	10.1 mi	10.1 mi	10.1 mi	10.1 mi	10.1 mi	10.1 mi	10.1 mi	10.1 mi	10.1 mi	10.1 mi	10.1 mi	10.1 mi	10.1 mi	10.1 mi

Hazardous Weather Alerts:

All Clear

Current Radar 2:50 PM ET



IMPORTANT FORECAST NOTES (as of 2:55 PM ET, 6/6/24):

- ✓ From 3 - 5 PM, we will need to watch for an isolated risk of a light shower as small cells could develop ahead of the front (10%). Favoring this front / broken line of showers and isolated storms (40%) to push into the Pittsburgh area between 5 - 6 PM ET lasting through 7 PM. Isolated lightning threat along with 30-40 MPH wind gusts may be possible with a locally stronger cell! From 7 - 9 PM, chances for showers remain very isolated (10%) with dry conditions favored then beyond 9 PM.
- ✓ Favoring potential rainfall totals of 0.05 - 0.15", localized up to 0.3", if caught under a cell or two throughout the day.
- ✓ Temperatures will be in the mid/upper 70s F by first pitch. Low temperatures will dip into the upper 50s / low 60s F Friday AM.
- ✓ Winds will be sustained at 10 - 15 MPH out of the W throughout much of the day. Winds will increase to 15 - 20 MPH as front works through around 5 - 7 PM. Gusts have the potential to reach 25-30 MPH. After 8 PM, winds will decrease to 5 - 10 MPH.

Dew Forecast

- ✓ Dew will likely be on surfaces Friday morning (60%).