

Houston Pilots Forecast Package

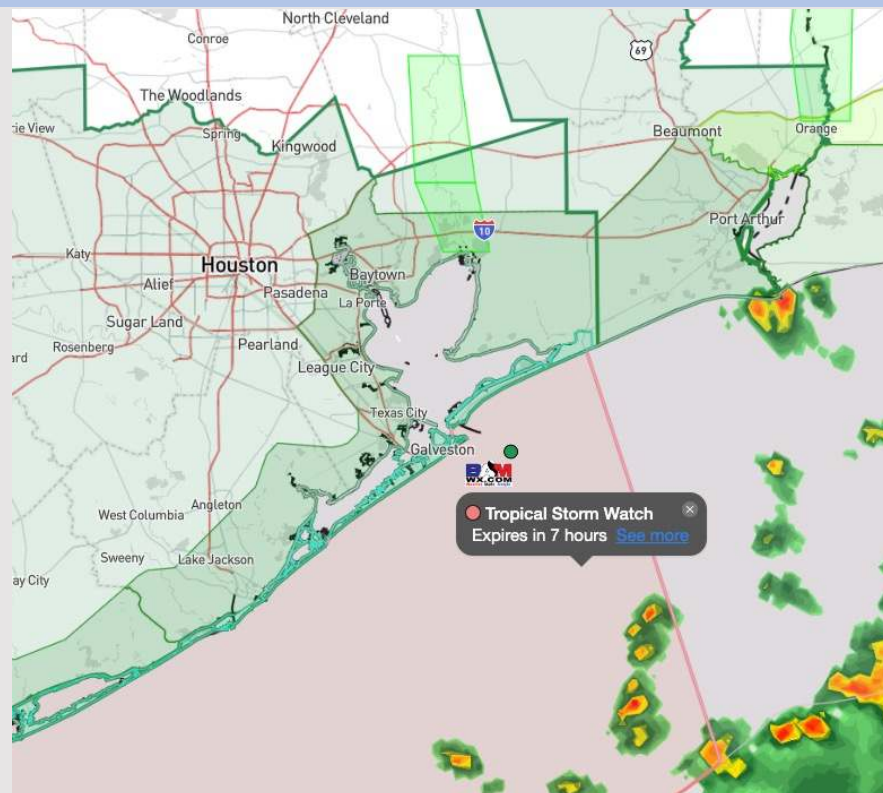


Updated: 10:45 PM CT
Monday, June 17, 2024

Forecaster: Jonathan Kipper

Weather Headlines

- Stronger wind gusts will continue across the area now through FRI.
- Zulu port conditions in effect. See slides below for timing and anticipated wave heights.
- Scattered to widespread showers/storms expected to continue through now into THU.
- Check custom graphic below on current thinking for multi day heavy rain event.



Current Radar: 10:40 PM CT



As always, please do not hesitate to reach out to us with any forecast questions via the chat option on Clarity or our on-call number, **(317)-560-8122** press 1 for forecast questions.

Houston Pilots Wave Height Update



Port Condition	34 KTS+ Sustained Winds	6 Foot Waves	Time Remaining/Trigger End
Victor	N/A	N/A	N/A
Whiskey	N/A	N/A	N/A
X-Ray	N/A	N/A	N/A
Yankee	N/A	N/A	N/A
Zulu	NO	IN EFFECT	4 AM CT FRI

Port Condition	Trigger Definition	Trigger Reached?
Victor	Hurricane entering/developing in Gulf of Mexico that's a threat to the area	No
Whiskey	72 hours prior to predicted sustained winds of 34+ KTS	No
X-Ray	48 hours prior to predicted sustained winds of 34+ KTS or 6' wave height	No
Yankee	24 hours prior to predicted sustained winds of 34+ KTS or 6' wave height	No
Zulu	12 hours prior to predicted sustained winds of 34+ KTS or 6' wave height	YES

Wave heights ~6 ft towards Station 11/12 and the Boarding Station are anticipated to continue to gradually increase in height throughout the week, remaining at 6+ ft until ~4 AM FRI. **More details on progression on wave height slide.**

Houston Pilots Tropical Update

European Model Next 10 Days - Tropical Tracks

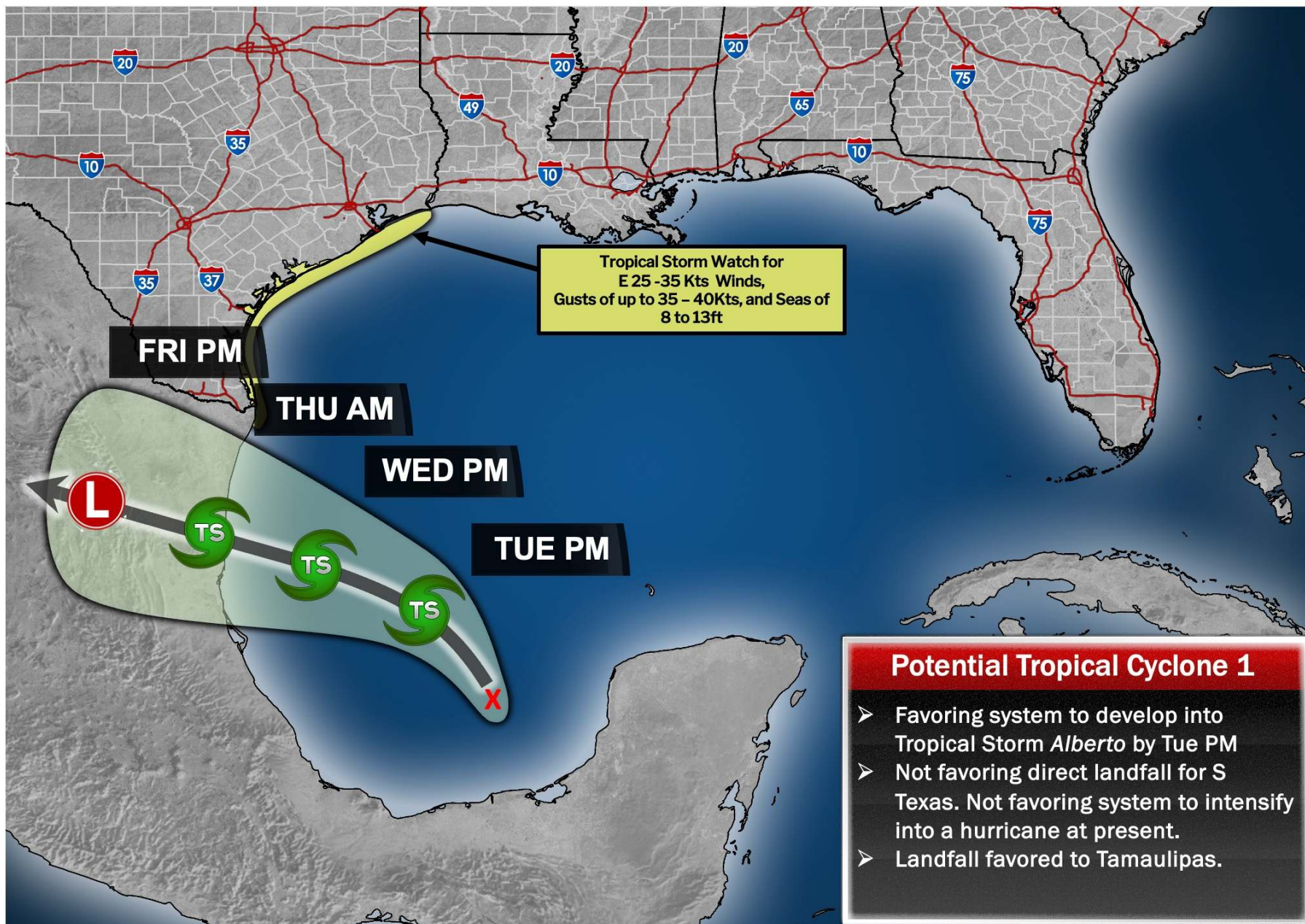


Monitoring a tropical disturbance with the potential to become a Tropical Depression in the SW Gulf of Mexico through the 21st.

As of TUE AM, direct impact with Houston is not favored. Periods of moderate/heavy rain and higher seas will be possible during that timeframe.

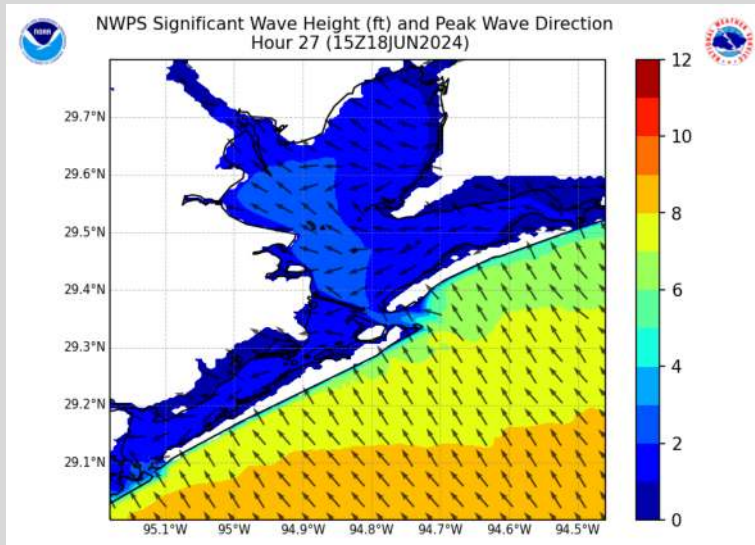
Tropical Update – Favoring Alberto to Develop by Tue PM

UPDATED: 6/17/24 10:00 PM CT



Houston Pilots Wave Height Update

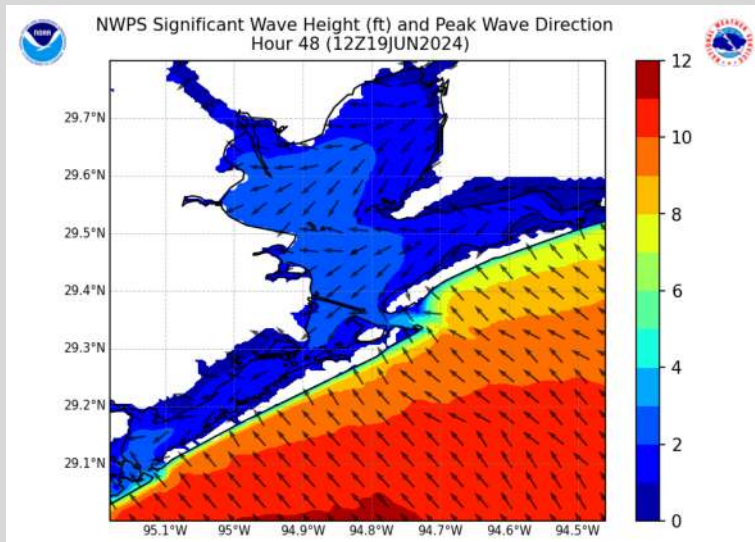
Significant Wave Height Image



10 AM CT TUE

Wave heights of 6+ ft will continue to increase over the next ~30 hours.

The highest waves are favored to arrive around 7 AM WED and continue through 4 AM THU. Over this time frame, favored wave heights are ~8 - 10ft at station 11/12 and the Boarding Station. An occasional 11-12 ft wave around the Boarding Station cannot be ruled out.



7 AM CT WED

(PEAK HEIGHTS)

Wave heights very slowly recede across THU. Heights are currently anticipated to drop below 6 ft threshold around 4 AM FRI.

Houston Pilots Visibility Chart (miles)



Time	Mon 11pm	Tue 12am	Tue 1am	Tue 2am	Tue 3am	Tue 4am	Tue 5am	Tue 6am	Tue 7am	Tue 8am	Tue 9am	Tue 10am	Tue 11am	Tue 12pm	Tue 1pm	Tue 2pm	Tue 3pm	Tue 4pm	Tue 5pm	Tue 6pm	Tue 7pm	Tue 8pm	Tue 9pm	Tue 10pm
610 Bridge	10	10	10	10	10	10	10	10	10	10	10	10	10	10	10	10	10	10	10	10	10	10	10	10
Kinder 1	10	10	10	10	10	10	10	10	10	10	10	10	10	10	10	10	10	10	10	10	10	10	10	10
Greens Bayou	10	10	10	10	10	10	10	10	10	10	10	10	10	10	10	10	10	10	10	10	10	10	10	10
Shell Crude	10	10	10	10	10	10	10	10	10	10	10	10	10	10	10	10	10	10	10	10	10	10	10	10
Lynchburg Ferries	10	10	10	10	10	10	10	10	10	10	10	10	10	10	10	10	10	10	10	10	10	10	10	10
Exxon 3	10	10	10	10	10	10	10	10	10	10	10	10	10	10	10	10	10	10	10	10	10	10	10	10
Morgans Point	10	10	10	10	10	10	10	10	10	10	10	10	10	10	10	10	10	10	10	10	10	10	10	10
75/76	10	10	10	10	10	10	10	10	10	10	10	10	10	10	10	10	6	3	4	4	6	8	6	7
63/64	10	10	10	10	10	10	10	10	10	10	10	10	10	10	10	10	6	3	4	4	6	8	5	7
51/52	10	10	10	10	10	10	10	10	10	10	10	10	10	10	10	6	6	3	3	4	5	9	4	8
37/38	10	10	10	10	10	10	10	10	10	10	10	10	10	10	10	6	6	3	3	4	5	9	5	8
25/26	10	10	10	10	10	10	10	10	10	10	10	10	10	10	10	6	6	3	3	3	4	8	5	8
11/12	10	10	10	10	10	10	10	10	10	10	10	10	10	10	9	6	3	2	3	3	4	7	7	7
1 & 2 Bravo	10	10	10	10	10	10	10	10	10	10	10	10	10	7	5	4	2	2	2	2	3	2	7	4

NOTE: This is automated data that may/may not agree with the official BAM thinking that's found on the daily slides or special visibility report slides. This data should be used as a guide only

Houston Pilots Wind Chart



Forecast Confidence

Above Normal

Below Normal

Example

Sustained wind 13 Knots

Gusts 18 Knots

Wind from the N

WS: 13
G:18
N

Time Knots	Mon 11pm	Tue 12am	Tue 1am	Tue 2am	Tue 3am	Tue 4am	Tue 5am	Tue 6am	Tue 7am	Tue 8am	Tue 9am	Tue 10am	Tue 11am	Tue 12pm	Tue 1pm	Tue 2pm	Tue 3pm	Tue 4pm	Tue 5pm	Tue 6pm	Tue 7pm	Tue 8pm	Tue 9pm	Tue 10pm
610 Bridge	10	9	9	8	8	7	8	8	8	9	10	11	12	12	13	13	13	13	13	13	12	12	13	13
	21	19	17	17	16	16	15	16	16	18	19	21	23	24	26	26	27	27	27	26	25	25	26	26
Kinder 1	10	9	9	8	8	7	8	8	8	9	10	11	12	12	12	13	13	13	13	13	12	12	13	13
	21	19	18	17	17	16	15	16	16	18	19	21	23	24	25	25	27	26	26	26	25	26	26	27
Greens Bayou	11	9	9	8	8	8	8	8	8	9	10	11	11	12	12	12	13	12	13	13	12	12	13	13
	21	19	18	17	17	16	16	16	17	18	19	21	23	23	24	25	25	25	25	25	25	25	26	26
Shell Crude	11	10	9	9	8	8	8	8	9	9	10	11	12	12	12	13	13	13	13	13	12	13	13	13
	21	19	18	18	17	17	16	17	17	19	20	21	23	23	24	25	26	25	26	26	25	26	26	27
Lynchburg Ferries	10	9	9	8	8	7	8	8	8	9	10	11	12	13	13	13	13	13	13	13	12	12	13	13
	21	19	18	17	17	16	16	16	17	19	19	21	22	23	24	25	25	25	25	25	25	25	26	26
Exxon 3	17	16	15	15	14	13	14	14	13	14	15	15	15	15	15	16	16	16	16	17	17	18	19	19
	23	22	21	20	19	18	19	19	19	20	21	22	23	23	25	25	26	25	26	26	26	27	28	28
Morgans Point	17	17	15	15	15	14	14	14	14	15	15	15	15	16	16	16	16	16	17	17	17	19	19	20
	24	22	21	20	20	19	20	20	20	21	21	22	23	24	25	25	26	26	27	27	27	28	29	29
75/76	19	18	17	17	17	16	17	17	16	17	17	17	17	17	17	18	19	18	20	19	20	21	22	23
	26	25	23	23	23	22	23	23	22	23	24	24	25	26	27	27	28	29	30	30	29	31	31	32
63/64	19	19	17	17	17	17	17	17	17	17	18	18	18	19	19	19	20	20	21	21	21	22	23	23
	26	25	24	24	24	23	23	23	22	24	25	26	26	27	28	28	29	30	30	30	30	32	32	33
51/52	20	19	18	19	18	17	18	18	17	18	19	19	19	19	19	20	21	21	22	22	22	23	24	24
	27	26	24	25	25	24	24	23	23	25	26	27	28	28	28	29	30	30	31	31	31	32	34	34
37/38	19	19	18	18	18	17	18	18	17	19	19	19	19	19	19	21	21	21	22	22	22	23	24	24
	27	26	24	25	25	24	24	24	23	25	26	27	28	29	28	30	31	31	31	31	32	32	34	34
25/26	19	18	17	17	17	17	17	17	17	18	19	19	19	19	19	21	21	21	21	21	21	22	23	23
	26	26	24	24	24	24	24	24	23	25	26	27	28	29	29	30	31	31	31	31	31	33	34	34
11/12	17	17	15	16	16	15	16	16	15	17	17	18	19	19	19	20	21	21	20	20	20	21	21	21
	26	25	23	24	24	23	23	23	23	24	25	26	27	28	28	30	30	30	31	31	31	32	33	33
1 & 2 Bravo	20	19	19	19	19	19	19	19	19	19	20	21	21	21	22	23	23	23	24	24	25	25	25	25
	28	27	26	26	25	25	26	26	26	27	28	29	30	31	31	33	33	33	35	34	34	35	36	35

NOTE: This is automated data that may/may not agree with the official BAM thinking that's found on the daily slides.
This data should be used as a guide only.

Houston Pilots: Tue. 6/18/2024

Forecast Discussion

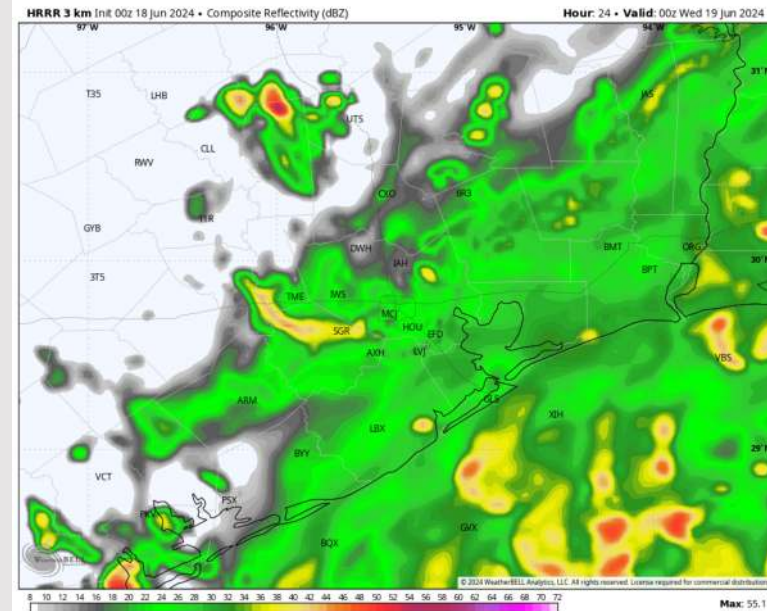
Precip: Favoring dry conditions through 4 AM this morning before scattered to widespread showers/thunderstorms work into the area. These chances will continue into the PM hours. **Main risks with thunderstorms will be lightning, hail and strong wind gusts (details below).**

Wind: Winds will be out of the southeast through 4 PM before shifting to out of the east. **N of Morgan's Point:** Winds at 8-13 kts through 10 AM before increasing to 12-17 kts. **Thunderstorm-related wind gusts of 28-33 kts will be possible after 3 PM.** **S of Morgan's Point:** Winds at 18-23 kts through 10 AM before increasing to 28-33 kts for the remainder of the day. **Thunderstorm-related wind gusts of 38-43 kts will be possible after 10 AM.**

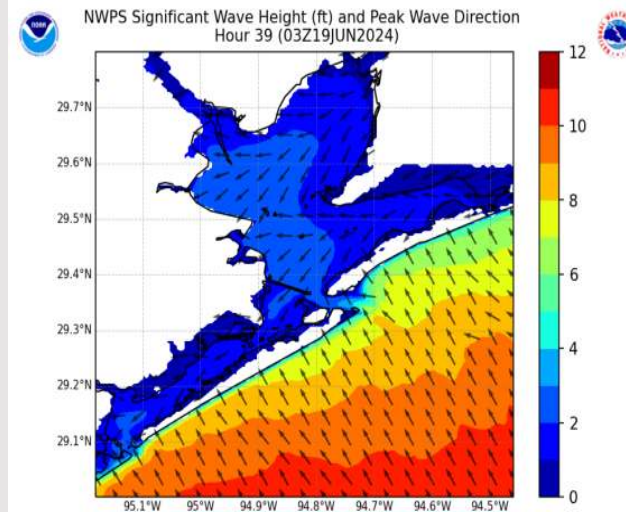
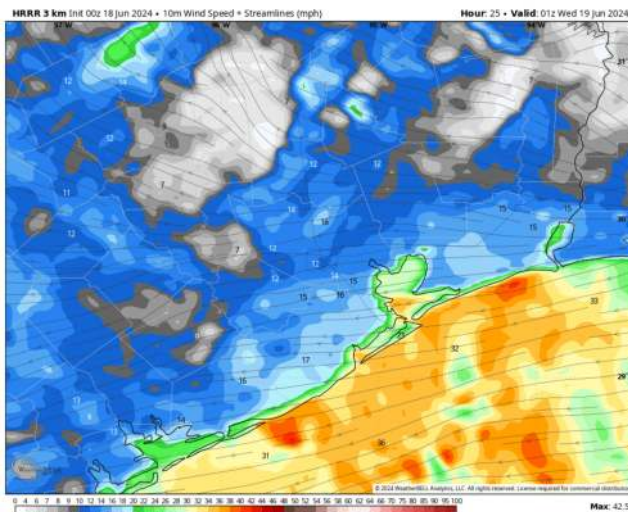
Wave Heights: Wave heights of 6-8 ft will gradually increase for stations 11/12 and the Boarding Station throughout the day.

Visibility: Not anticipating any fog concerns for today, however reduced visibilities possible under heavier downpours.

Precip Image: 7 PM CT



Wind Speed:
8 PM CT



Max Wave Heights:
10 PM CT

Houston Pilots: Wed. 6/19/2024

Forecast Discussion

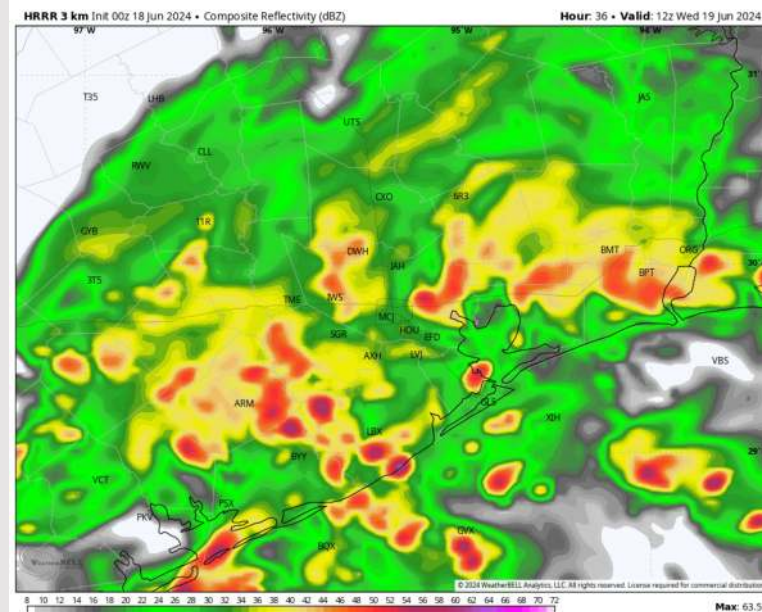
Precip: Widespread showers/thunderstorms continue into WED and will linger throughout the day. **Main risks with thunderstorms will be lightning, hail and strong wind gusts (details below).**

Wind: Winds will be out of the E/ESE throughout the day WED. **N of Morgan's Point:** Favoring winds at 12-17 kts throughout Wednesday. **Thunderstorm-related wind gusts of 28-33 kts will be possible throughout the day.** **S of Morgan's Point:** Favoring winds at 28-33 kts throughout the entire day. **Thunderstorm-related wind gusts of 38-43 kts in play throughout the day**

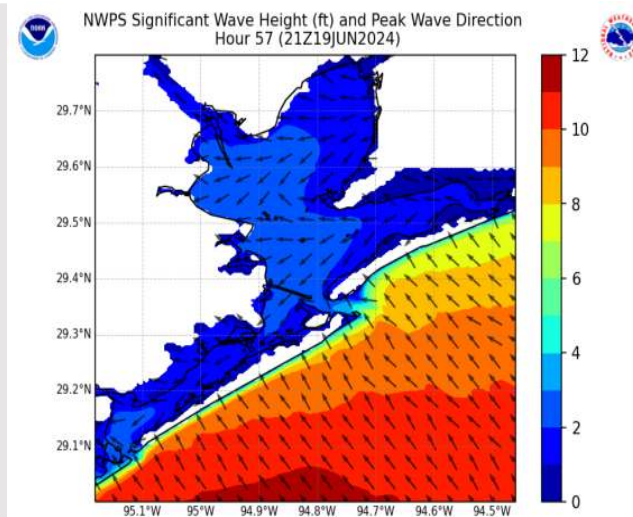
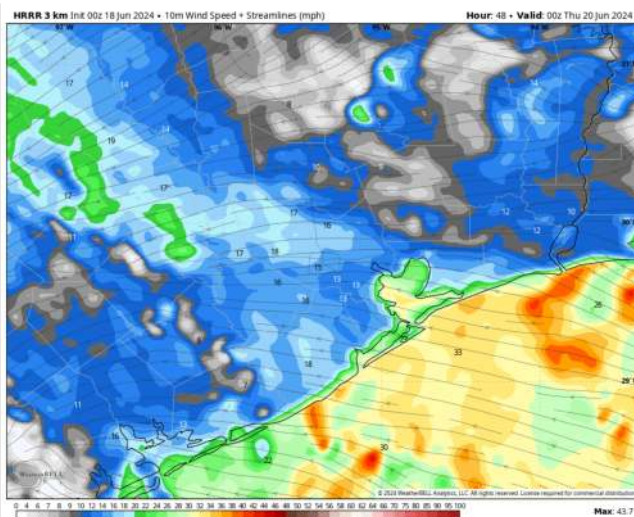
Wave Heights: Wave heights will continue to increasing, reaching 8-10 ft by 7 AM CT WED for Stations 11/12 and the Boarding Station (an occasional 11-12 wave cannot be ruled out). Heights will remain at 8+ ft throughout WED.

Visibility: Not favoring any fog concerns for Wednesday, however reduced visibilities possible under heavier downpours.

Precip Image: 7 AM CT



Wind Speed
7 PM CT



Max Wave
Heights:
4 PM CT

Houston Pilots: Thu. 6/20/2024

Forecast Discussion

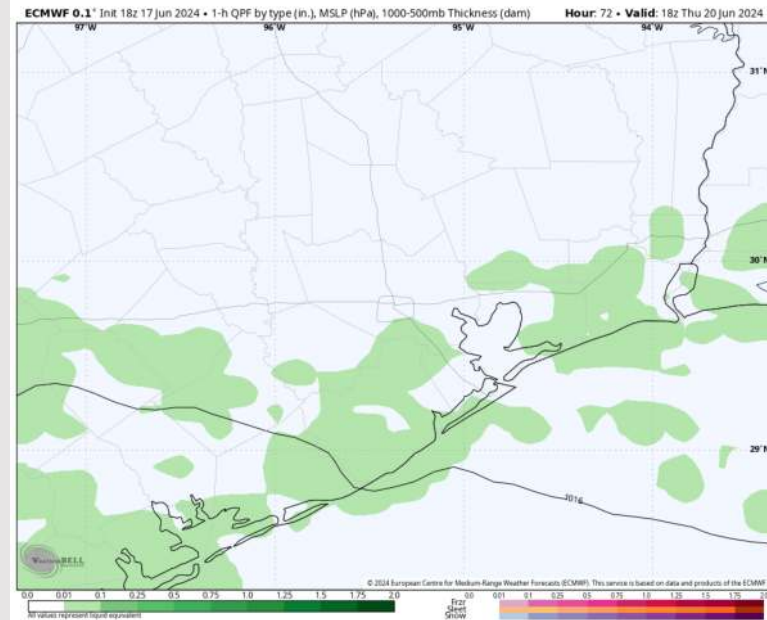
Precip: Widespread showers and storms are expected to decrease in coverage just after midnight, with lingering scattered rain/storms to continue throughout the day on THU. **A few storms have the potential to produce wind gusts of 35-40 kts.**

Wind: Winds will be out of the E/SE throughout the day THU. **N of Morgan's Point:** Winds will be at 11-16 kts for the entire day. **S of Morgan's Point:** Winds at 26-31 kts through 6 PM before a slight decline to 22-27 kts. **Non-thunderstorm wind gusts of 27-32 kts will be possible S of Morgan's Point throughout the day and N of Morgan's Point from 10 AM to 6 PM.**

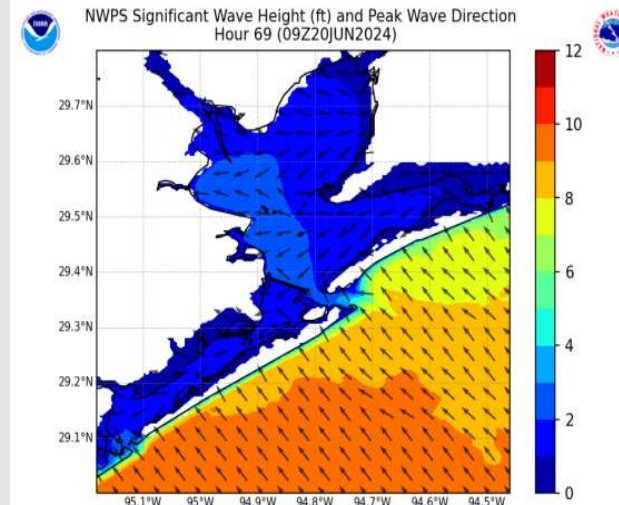
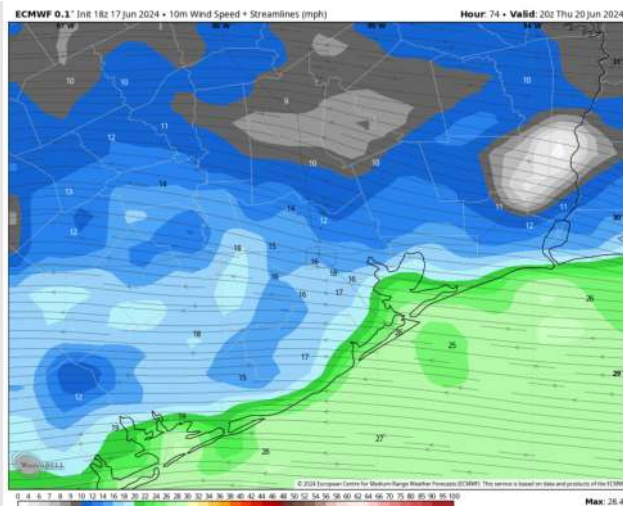
Wave Heights: Wave heights of 8-10 ft will continue for Stations 11/12 and the Boarding Station through ~4 AM CT THU. After 4 AM, wave heights will gradually decrease, however remain above 6 ft throughout all of THU.

Visibility: Not anticipating any fog concerns for Thursday, however reduced visibilities possible under heavier downpours.

Precip Image: 1 PM CT



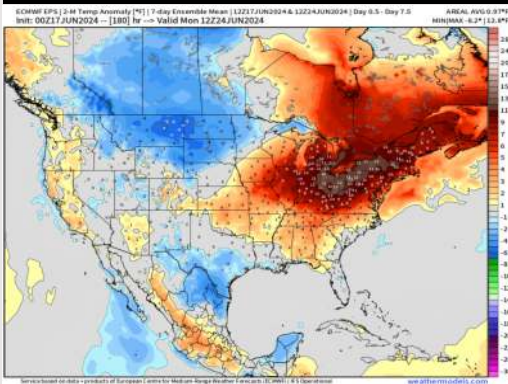
Wind Speed:
3 PM CT



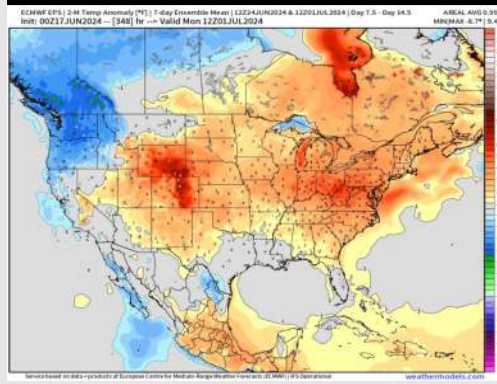
Max Wave Heights:
4 AM CT

Houston Pilots: 6/17/24

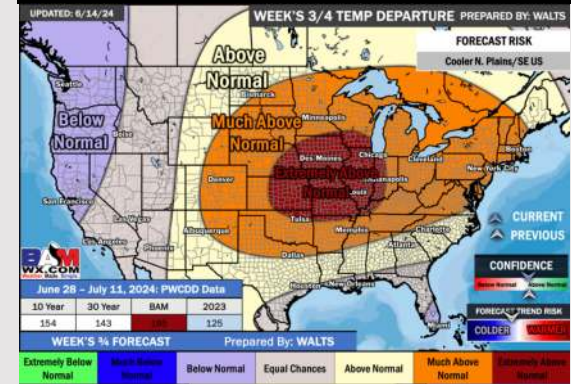
Next 7 Day Temperature Departure



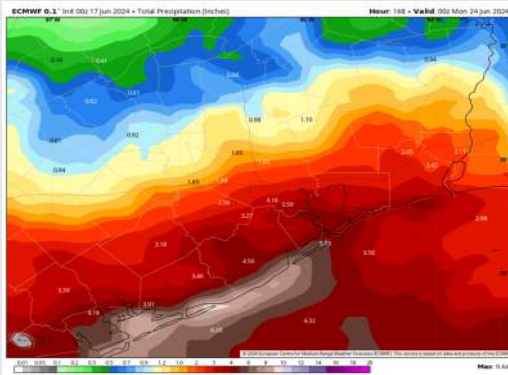
8-14 Day Temperature Departure



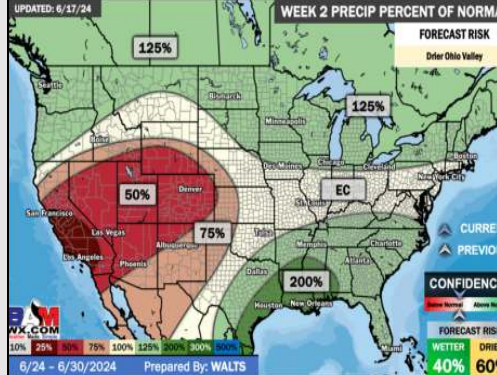
15-30 Day Temperature Departure



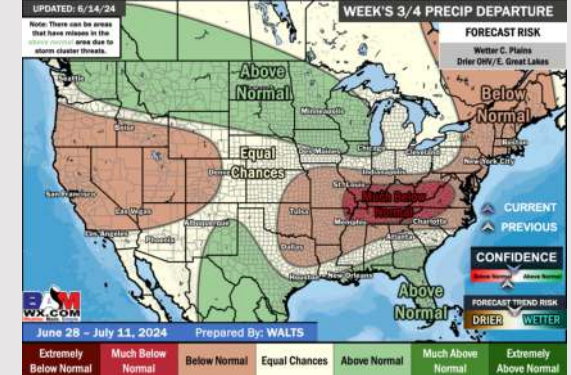
Next 7 Day Total Precipitation



8-14 Day % of Average Precip.



15-30 Day % of Average Precip.



- Temps are expected to be near / slightly below normal for the week 1 timeframe. Monitoring risk for moderate/heavy rain now through THU associated with a tropical system. (Check custom graphic for more information)
- Above normal precipitation chances are at play during the week 2 timeframe. Temps are expected to be near normal for week 2.
- Above normal chances for precipitation and near normal temperatures are favored in the weeks 3/4 timeframe.