

Houston Pilots Forecast Package

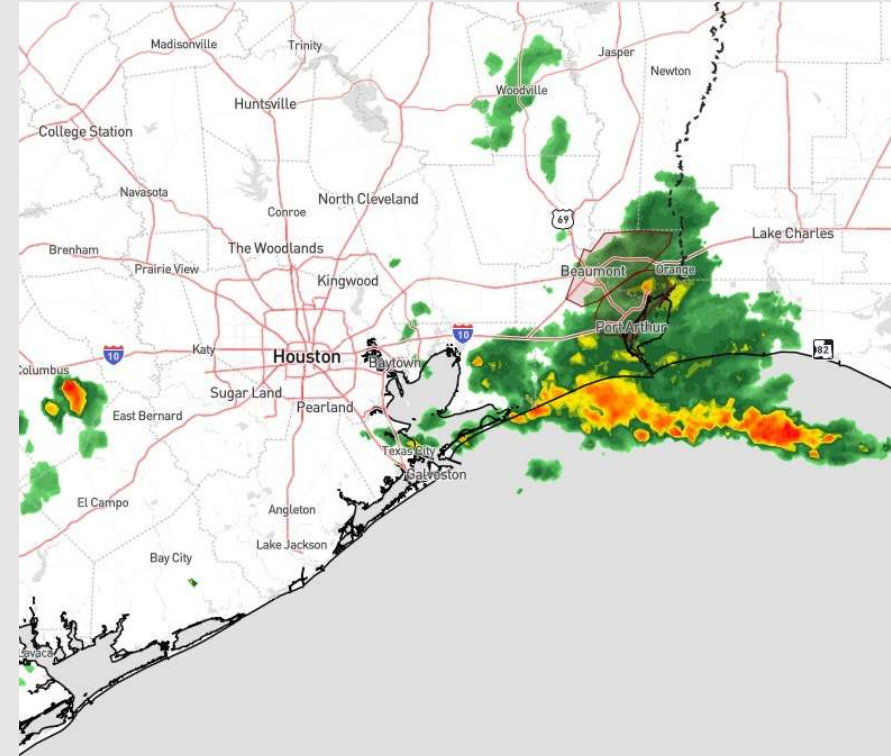


Updated: 10:45 PM CT
Tuesday, June 11, 2024

Forecaster: Jonathan Kipper

Weather Headlines

- Winds to remain relatively calm throughout the rest of the week outside of stronger wind gusts of 25-30 kts with storms throughout the day today.
- Expecting sporadic showers and storms to hang around the Houston/Galveston area through this afternoon.
- Check out the moderate/heavy rainfall risk map below outlining risks into early/mid next week.

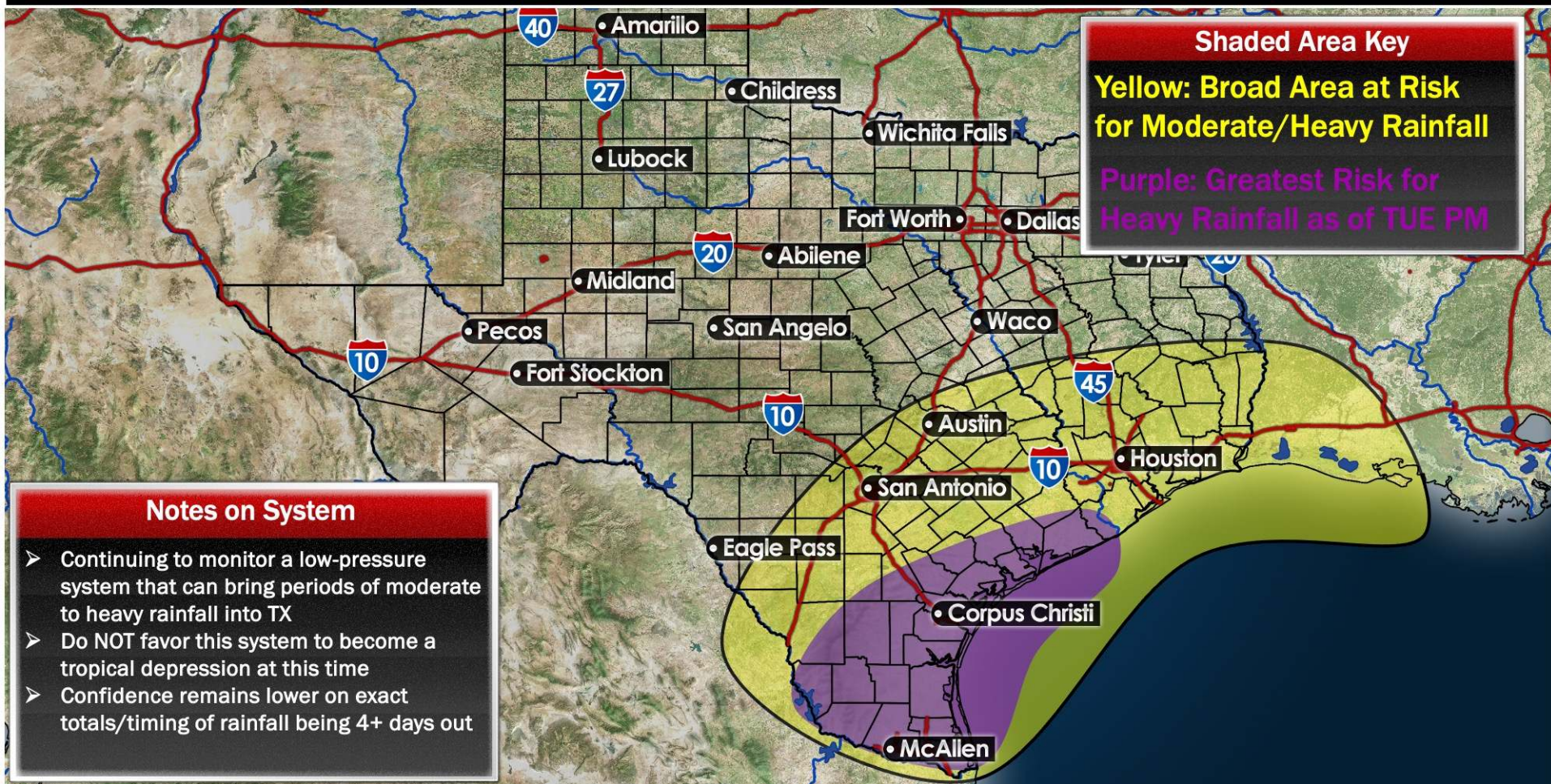


Current Radar: 10:30 PM CT



As always, please do not hesitate to reach out to us with any forecast questions via the chat option on Clarity or our on-call number, **(317)-560-8122** press **1** for forecast questions.

Moderate to Heavy Rainfall Risk (6/16 – 6/19)

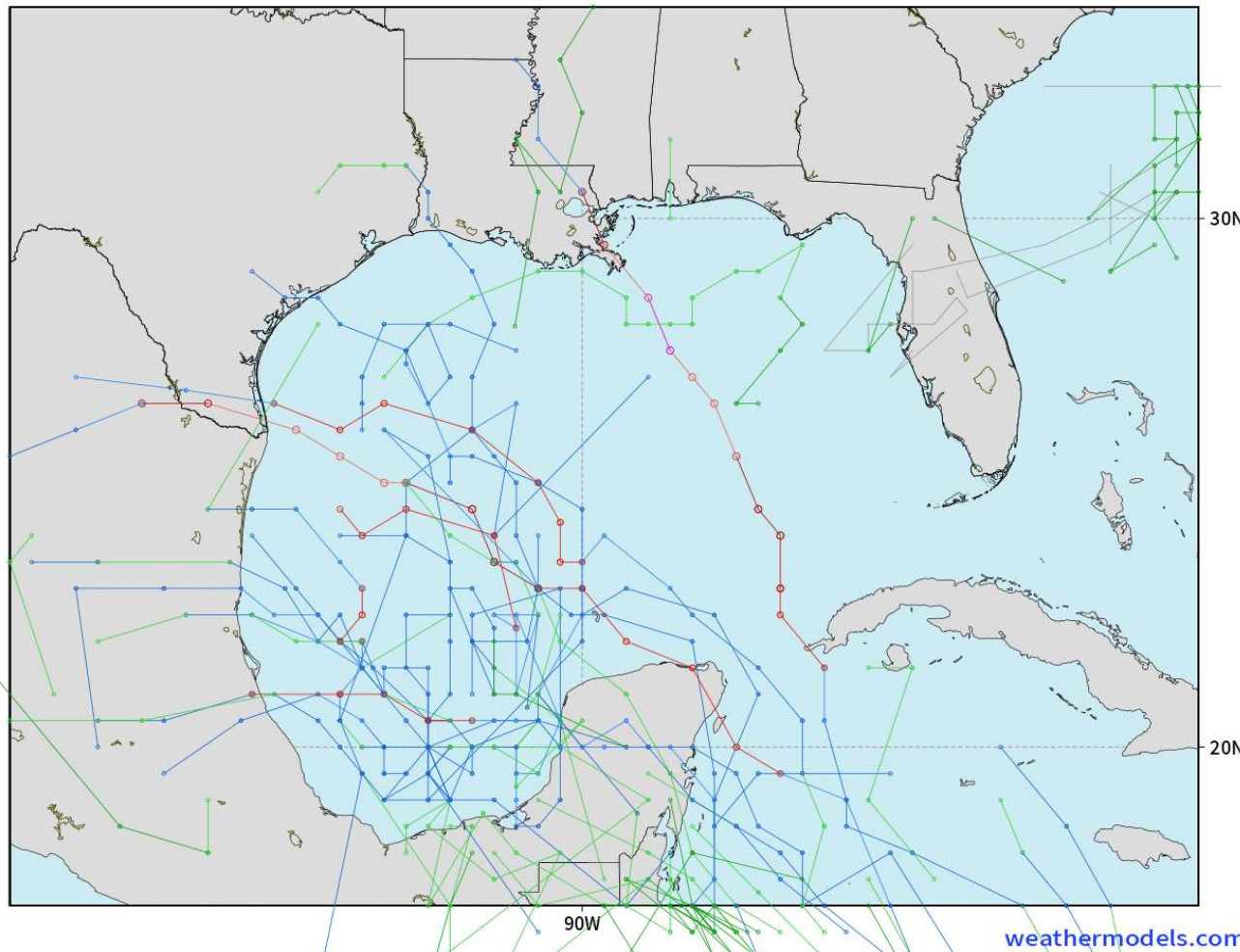


Houston Pilots Tropical Update

American Model Next 10 Days - Tropical Tracks

NOAA GEFSv12 | All Ensemble Cyclones +240 Hours
INIT: 18Z11JUN2024 --> UNTIL 18Z21JUN2024

o-o > 1010 hPa
o-o 1000 - 1010 hPa
o-o 980 - 999 hPa
o-o 960 - 979 hPa
o-o 950 - 959 hPa
o-o < 950 hPa



Monitoring low-end potential for a disorganized area of low pressure to work NE across the E Gulf of Mexico from 6/15- 6/19.

As of WED AM, moderate/heavy rainfall will be possible in the HOU area, however not favored to be a tropical depression

Houston Pilots Visibility Chart (miles)



Time	Tue 11pm	Wed 12am	Wed 1am	Wed 2am	Wed 3am	Wed 4am	Wed 5am	Wed 6am	Wed 7am	Wed 8am	Wed 9am	Wed 10am	Wed 11am	Wed 12pm	Wed 1pm	Wed 2pm	Wed 3pm	Wed 4pm	Wed 5pm	Wed 6pm	Wed 7pm	Wed 8pm	Wed 9pm	Wed 10pm	
610 Bridge	10	10	10	10	10	10	10	10	10	10	10	10	10	10	10	10	10	10	10	10	10	10	10	10	
Kinder 1	10	10	10	10	10	10	10	10	10	10	10	10	10	10	10	10	10	10	10	10	10	10	10	10	10
Greens Bayou	10	10	10	10	10	10	10	10	10	10	10	10	10	10	10	10	10	10	10	10	10	10	10	10	10
Shell Crude	10	10	10	10	10	10	10	10	10	10	10	10	10	10	10	10	10	10	10	10	10	10	10	10	10
Lynchburg Ferries	10	10	10	10	10	10	10	10	10	10	10	10	10	10	10	10	10	10	10	10	10	10	10	10	10
Exxon 3	10	10	10	10	10	10	10	10	10	10	10	10	10	10	10	10	10	10	10	10	10	10	10	10	10
Morgans Point	10	10	10	10	10	10	10	10	10	10	10	10	10	10	10	10	10	10	10	10	10	10	10	10	10
75/76	10	10	10	10	10	10	10	10	10	10	10	10	10	10	10	10	10	10	10	10	10	10	10	10	10
63/64	10	10	10	10	10	10	10	10	10	10	10	10	10	10	10	10	10	10	10	10	10	10	10	10	10
51/52	10	10	10	10	10	10	10	10	10	10	10	10	10	10	10	10	10	10	10	10	10	10	10	10	10
37/38	10	10	10	10	10	10	10	10	10	10	10	10	10	10	10	10	10	10	10	10	10	10	10	10	10
25/26	10	10	10	10	10	10	10	10	10	10	10	10	10	10	10	10	10	10	10	10	10	10	10	10	10
11/12	10	10	10	10	10	10	10	10	10	10	10	10	10	10	10	10	10	10	10	10	10	10	10	10	10
1 & 2 Bravo	10	10	10	10	10	10	10	10	10	10	10	10	10	10	10	10	10	10	10	10	10	10	10	10	10

NOTE: This is automated data that may/may not agree with the official BAM thinking that's found on the daily slides or special visibility report slides. This data should be used as a guide only

Houston Pilots Wind Chart



Forecast Confidence



Example

Sustained wind 13 Knots
Gusts 18 Knots
Wind from the N

WS: 13
G:18
N

Time Knots	Tue 11pm	Wed 12am	Wed 1am	Wed 2am	Wed 3am	Wed 4am	Wed 5am	Wed 6am	Wed 7am	Wed 8am	Wed 9am	Wed 10am	Wed 11am	Wed 12pm	Wed 1pm	Wed 2pm	Wed 3pm	Wed 4pm	Wed 5pm	Wed 6pm	Wed 7pm	Wed 8pm	Wed 9pm	Wed 10pm
610 Bridge	3	3	3	2	2	3	3	3	3	3	3	3	4	4	5	5	5	5	5	5	5	4	3	3
	6	5	5	5	5	6	6	6	7	7	7	8	8	8	10	10	10	11	10	10	9	8	6	5
Kinder 1	E	E	E	E	NE	ENE	NE	NE	NE	NE	ENE	ENE	ENE	ENE	ENE	ENE	E	E	E	E	E	ESE	ESE	SE
	3	3	3	2	2	3	3	3	3	3	3	3	4	4	5	5	5	5	5	5	5	4	3	3
Greens Bayou	6	5	5	5	5	5	6	6	7	7	7	8	8	8	10	10	10	10	10	9	9	7	6	5
	E	E	E	E	NE	ENE	NE	NNE	NE	NE	ENE	ENE	ENE	ENE	ENE	ENE	E	E	E	E	E	ESE	SE	SSE
Shell Crude	3	3	3	2	3	3	3	3	3	3	3	3	4	4	5	5	5	5	5	5	5	4	3	2
	6	5	5	5	5	6	6	6	7	7	7	8	8	8	10	10	10	10	10	9	9	7	6	5
Lynchburg Ferries	E	E	E	E	NE	NE	NNE	NE	NE	NE	NE	NE	NE	ENE	ENE	E	E	E	E	E	E	ESE	ESE	SE
	5	5	5	5	5	5	6	6	7	7	7	8	9	8	10	10	10	10	10	9	9	7	6	5
Exxon 3	E	ESE	E	E	ENE	ENE	ENE	NE	NE	NE	NE	ENE	ENE	ENE	ENE	E	E	ESE	E	ESE	ESE	SE	SE	SE
	5	5	5	5	5	5	5	6	6	6	6	6	5	5	5	6	7	7	7	7	6	5	5	4
Morgans Point	7	7	7	7	7	8	8	8	9	9	8	8	8	9	9	10	11	11	11	11	10	9	8	6
	E	E	E	E	ENE	ENE	NE	NE	NE	NE	NE	ENE	ENE	ENE	ENE	E	ESE	ESE	ESE	ESE	SE	SE	SE	SE
75/76	5	5	5	5	5	6	6	6	7	6	6	6	5	5	5	5	6	7	7	7	7	6	5	5
	8	8	8	8	8	8	8	9	10	10	9	9	10	10	11	11	11	11	11	11	10	9	8	7
63/64	E	E	ESE	E	E	ENE	ENE	ENE	NE	NE	ENE	ENE	ENE	ENE	E	E	ESE	ESE	ESE	ESE	SE	SE	SSE	SSE
	6	6	6	6	5	6	6	6	7	7	6	6	5	5	5	5	6	6	6	6	6	6	5	5
51/52	9	8	9	8	8	8	8	9	9	9	9	9	10	9	10	10	11	11	11	10	10	9	8	7
	E	E	ESE	E	E	ENE	ENE	NE	NE	NE	NE	ENE	ENE	ENE	E	E	ESE	ESE	ESE	ESE	SE	SE	SE	SE
37/38	5	5	6	5	5	5	5	5	6	6	6	6	5	5	6	5	6	6	6	6	6	5	5	5
	8	8	9	8	8	8	8	8	9	9	9	9	10	9	10	10	10	11	10	10	9	8	8	7
25/26	E	E	ESE	ESE	ESE	E	E	ENE	ENE	NE	ENE	ENE	NE	NE	ENE	ENE	ENE	E	ESE	ESE	SE	SE	SE	SE
	5	5	5	5	5	5	5	5	5	5	5	6	6	6	6	6	6	6	6	6	6	5	5	5
11/12	8	8	9	8	8	8	8	8	9	8	8	8	9	9	10	10	9	10	9	9	9	8	8	7
	E	ESE	ESE	ESE	ESE	E	E	ENE	NE	NE	NE	NE	ENE	E	ENE	E	E	ESE	ESE	ESE	SE	SE	SE	SE
1 & 2 Bravo	6	6	6	6	6	6	5	5	5	6	6	6	6	6	6	6	6	6	6	6	5	5	5	5
	9	9	9	9	8	8	8	8	8	8	8	9	9	9	10	9	9	10	9	9	9	8	8	8
	E	ESE	ESE	ESE	ESE	E	E	E	ENE	ENE	ENE	NE	ENE	E	ENE	E	E	E	ESE	ESE	ESE	SE	SE	SE

NOTE: This is automated data that may/may not agree with the official BAM thinking that's found on the daily slides. This data should be used as a guide only.

Forecast Discussion

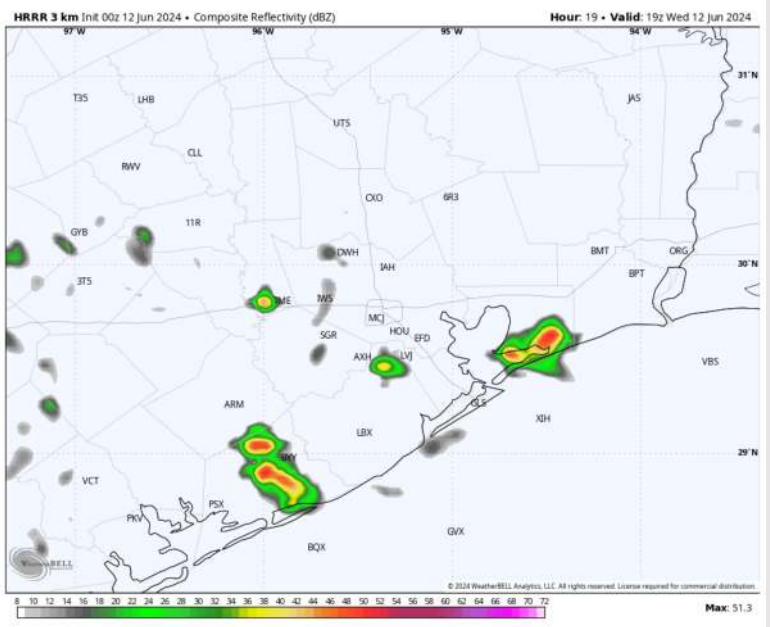
Precip: Hit/miss thunderstorms/showers (20%) possible throughout the morning and until ~5 PM. Dry conditions are favored after 5 PM as chances move to the West. **Isolated lightning strikes will be the main threat with these, isolated pockets of 25-30 kts wind gusts possible!**

Wind: Winds variable in direction through 5 AM, then gradually shifting from the NE to out of the SE by 5 PM. SE winds then continue after that time. **N of Morgan's Point:** Winds at 3-8 kts throughout Wednesday. **S of Morgan's Point:** Winds at 5-10 kts throughout the day.

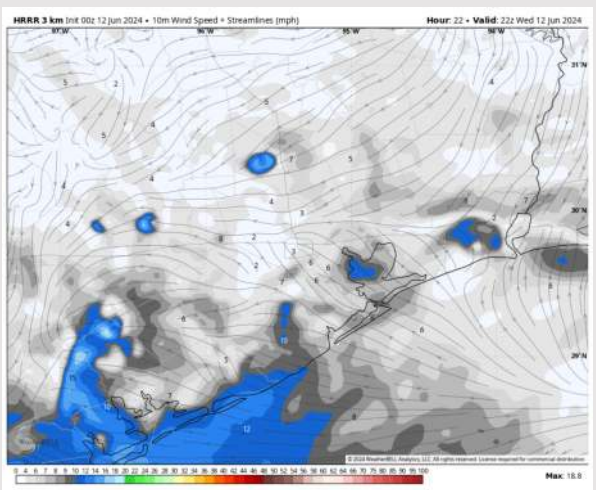
High Temps: **N of Morgan's Point:** Near 90 F **S of Morgan's Point:** Upper 80s F.

Visibility: Not favoring any visibility concerns for today.

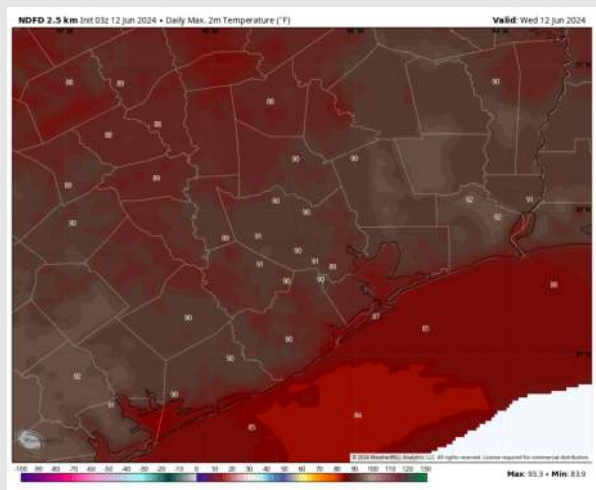
Precip Image: 2 PM CT



Wind Speed:
5 PM CT



High Temps
Today



Forecast Discussion

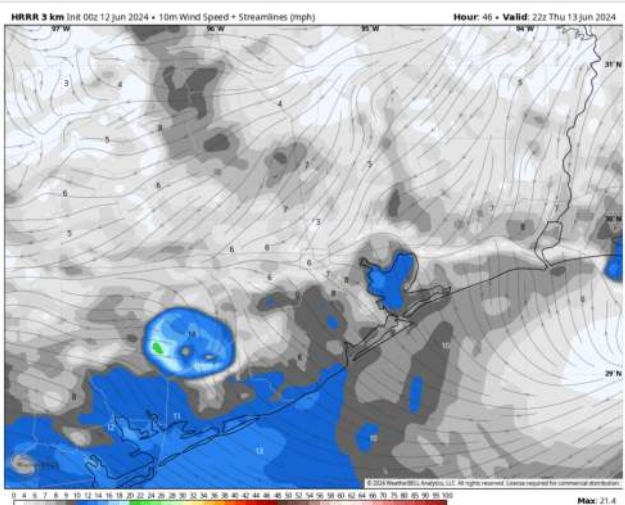
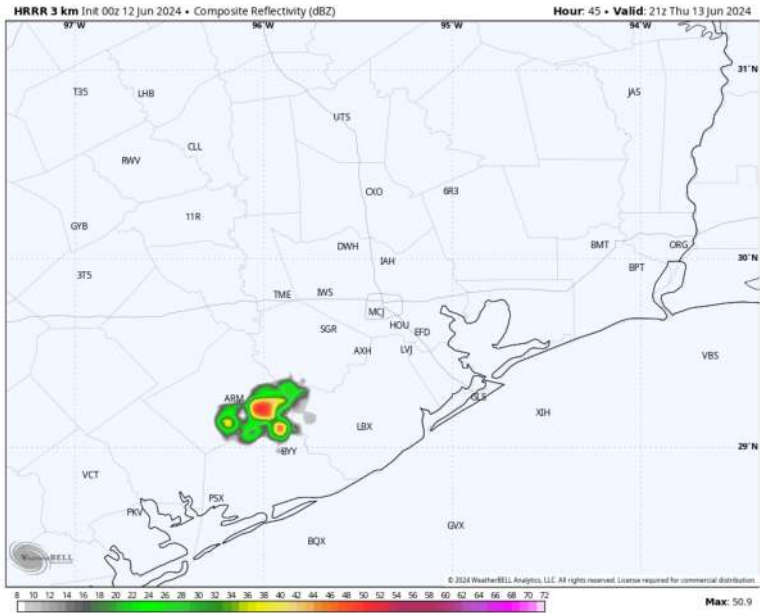
Precip: Favoring dry conditions for THU as rain chances will look to remain to the W of Stations.

Wind: Winds to become variable just after 1 AM THU, settling out of the NE by 8 AM. Winds will then gradually move clockwise throughout the day, settling out of the SE by 6 PM. **N of Morgan's Point:** Favoring winds at 2-7kts throughout THU. **S of Morgan's Point:** Favoring winds at 2-7 kts through 4 PM before increasing to 5-10 kts the rest of the day.

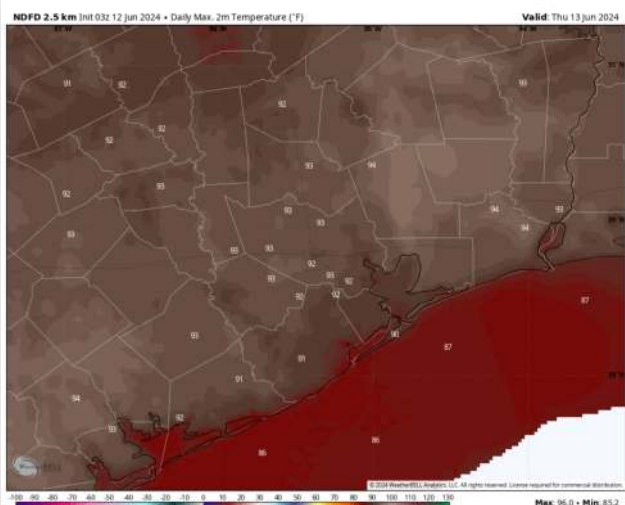
High Temps: **N of Morgan's Point:** Low 90's F. **S of Morgan's Point:** Near 90 F.

Visibility: A low end risk for fog THU AM, however not favored.

Precip Image: 4 PM CT



Wind Speed
5 PM CT



High Temps
Thursday

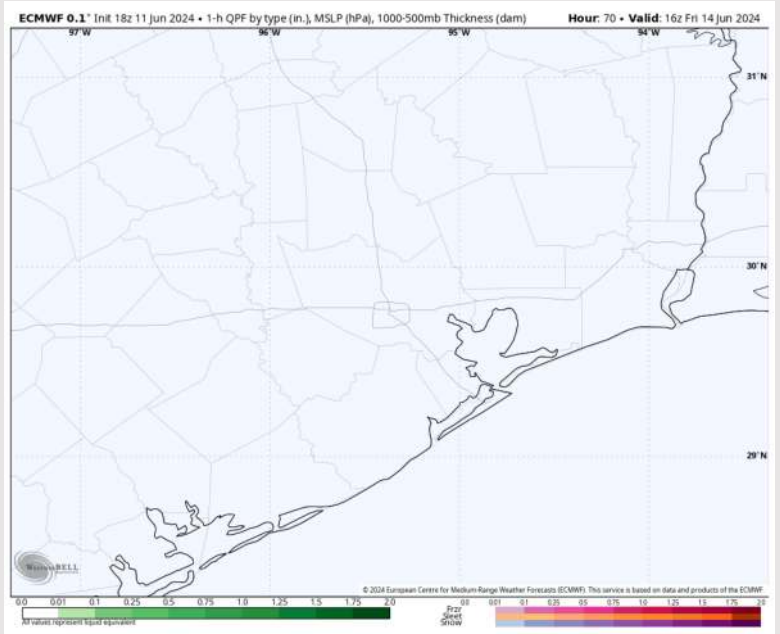
Houston Pilots: Fri. 6/14/2024



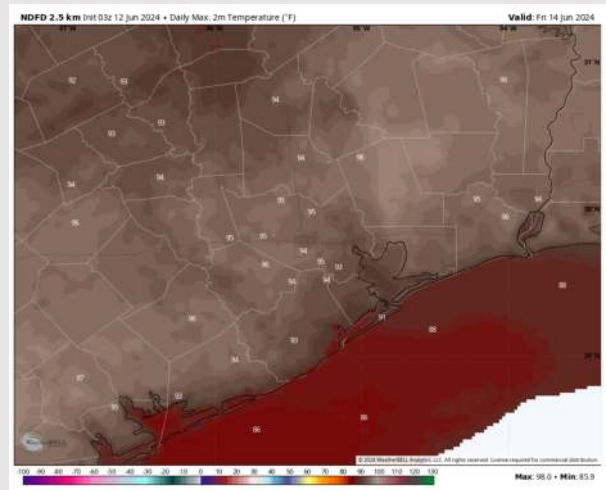
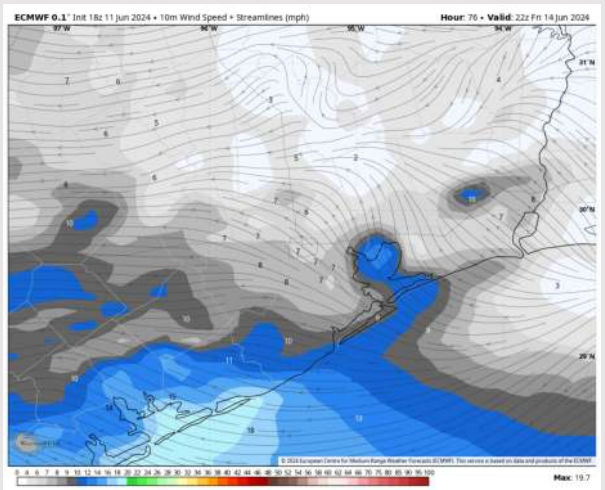
Forecast Discussion

- Precip:** Dry conditions favored for Friday.
- Wind:** Variable winds will begin after midnight before winds settle out of the N/NW by 8 AM. These winds will gradually work clockwise throughout the day, settling out of the SE by 5 PM. **N of Morgan's Point:** Winds at 2-7 kts throughout the day on Friday. **S of Morgan's Point:** Winds at 4-9 kts throughout the entire day.
- High Temps:** **N of Morgan's Point:** Mid 90s F. **S of Morgan's Point:** Near 90 F.
- Visibility:** A low end risk for fog FRI AM, however not favored.

Precip Image: 11 AM CT



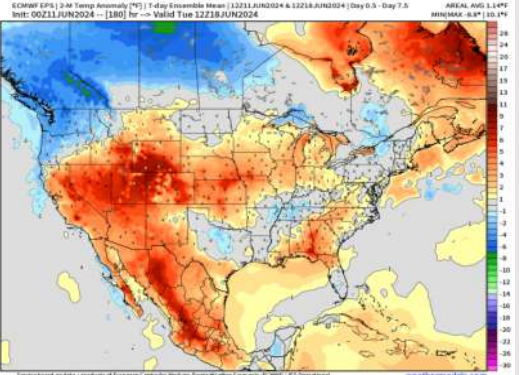
Wind Speed:
5 PM CT



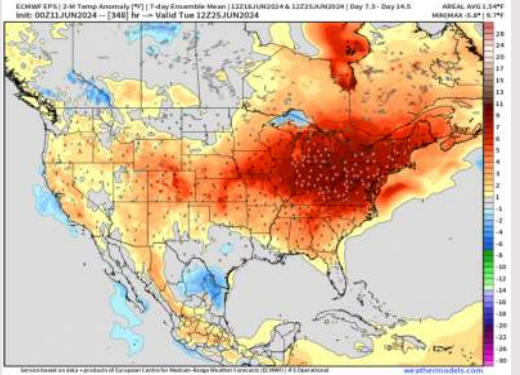
High Temps
Friday

Houston Pilots: 6/11/24

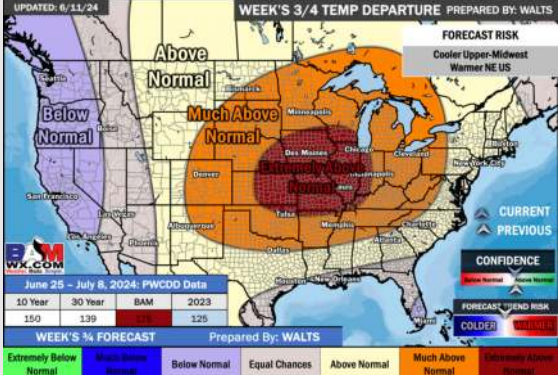
Next 7 Day Temperature Departure



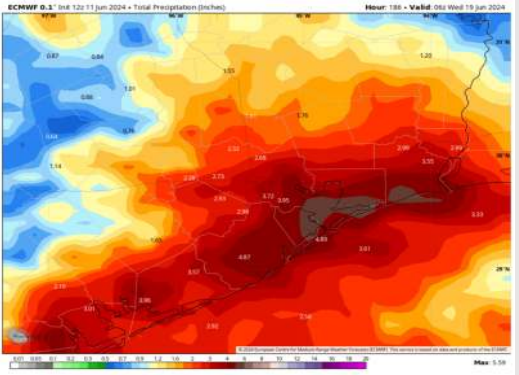
8-14 Day Temperature Departure



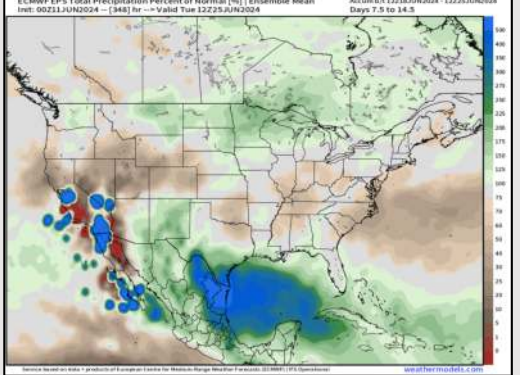
15-30 Day Temperature Departure



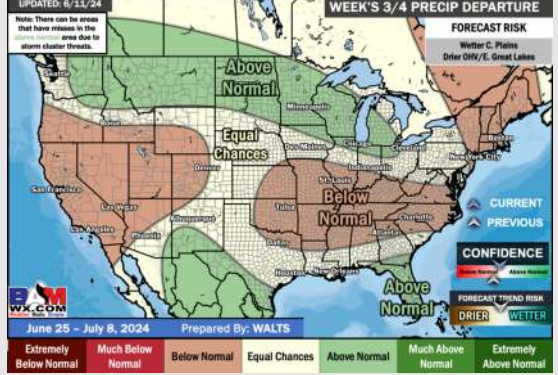
Next 7 Day Total Precipitation



8-14 Day % of Average Precip.



15-30 Day % of Average Precip.



- Temps are expected to be near normal for the week 1 timeframe. Monitoring risk for moderate/heavy rain beginning next MON but lower confidence on exact timing/placement (more details on custom slide above).
- Slightly above normal precipitation chances are at play during the week 2 timeframe. Temps are expected to be near normal for week 2.
- Near normal chances for precipitation and temperatures are favored in the weeks 3/4 timeframe.