

Houston Pilots Forecast Package

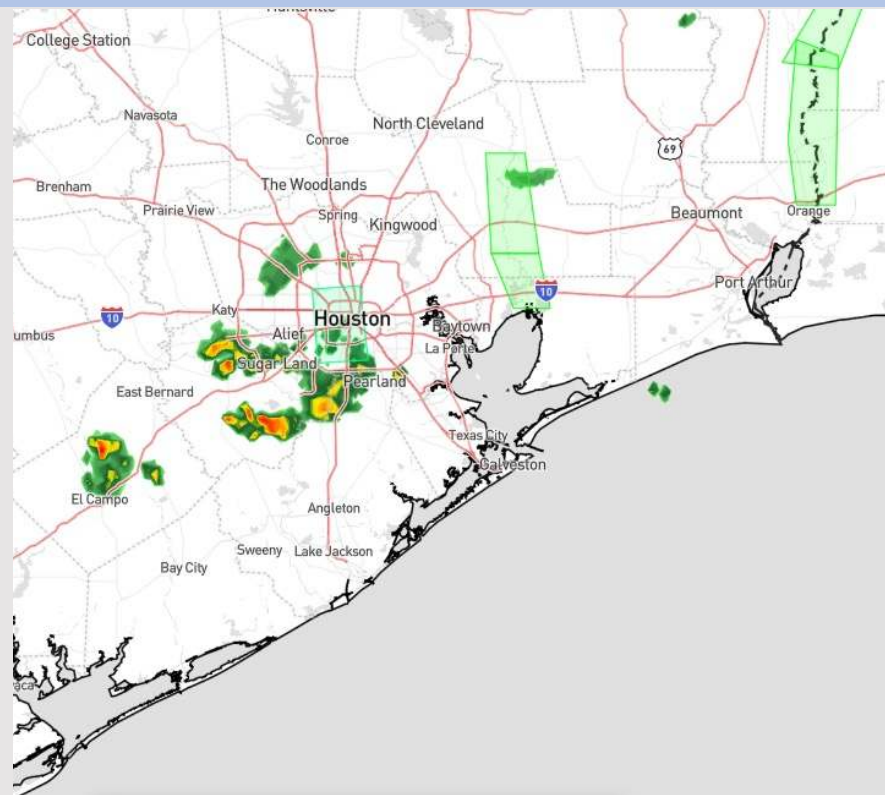


Updated: 10:45 PM CT
Monday, June 10, 2024

Forecaster: Jonathan Kipper

Weather Headlines

- Winds to remain relatively calm throughout the next few days with a couple isolated gusts near 20-25 kts under sporadic storms.
- Expecting sporadic showers and storms to hang around the Houston/Galveston area through WED PM.
- **No tropical activity is favored to impact the HOU area over the next week.**



Current Radar: 10:30 PM CT



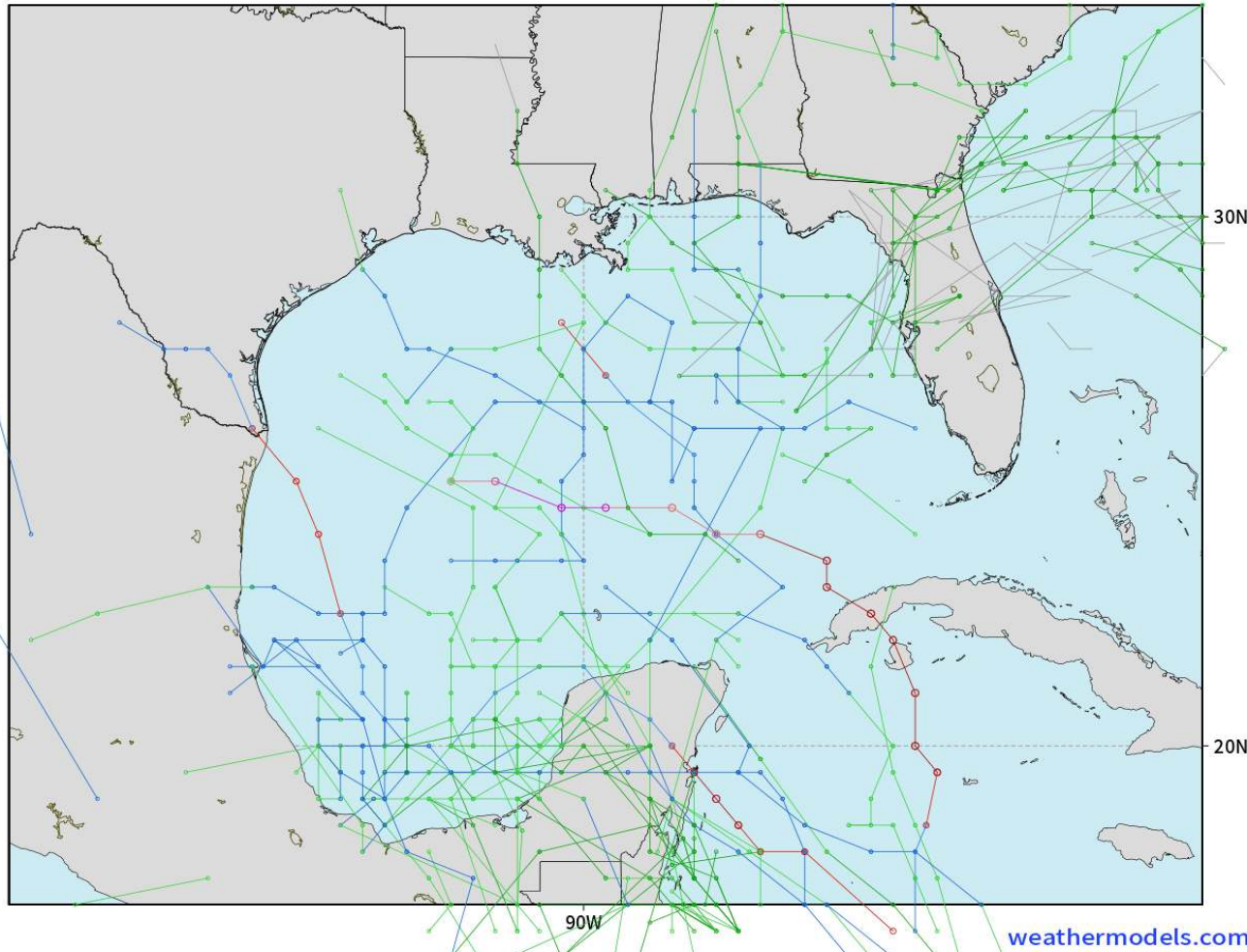
As always, please do not hesitate to reach out to us with any forecast questions via the chat option on Clarity or our on-call number, **(317)-560-8122** press 1 for forecast questions.

Houston Pilots Tropical Update

American Model Next 10 Days - Tropical Tracks

NOAA GEFSv12 | All Ensemble Cyclones +240 Hours
INIT: 18Z10JUN2024 --> UNTIL 18Z20JUN2024

o-o > 1010 hPa
o-o 1000 - 1010 hPa
o-o 980 - 999 hPa
o-o 960 - 979 hPa
o-o 950 - 959 hPa
o-o < 950 hPa



Monitoring low-end potential for a disorganized area of low pressure to work NE across the E Gulf of Mexico from 6/14– 6/17.

As of MON PM, impacts are not favored for the Houston Area.

Houston Pilots Visibility Chart (miles)



Forecast Confidence

Above
Normal

Below
Normal

Time	Mon 11pm	Tue 12am	Tue 1am	Tue 2am	Tue 3am	Tue 4am	Tue 5am	Tue 6am	Tue 7am	Tue 8am	Tue 9am	Tue 10am	Tue 11am	Tue 12pm	Tue 1pm	Tue 2pm	Tue 3pm	Tue 4pm	Tue 5pm	Tue 6pm	Tue 7pm	Tue 8pm	Tue 9pm	Tue 10pm
610 Bridge	10	10	10	10	10	10	10	10	9	10	10	10	10	10	10	10	10	10	10	10	10	10	10	10
Kinder 1	10	10	10	10	10	10	10	10	9	10	10	10	10	10	10	10	10	10	10	10	10	10	10	10
Greens Bayou	10	10	10	10	10	10	10	10	7	10	10	10	10	10	10	10	10	10	10	10	10	10	10	10
Shell Crude	10	10	10	10	10	10	10	10	9	10	10	10	10	10	10	10	10	10	10	10	10	10	10	10
Lynchburg Ferries	10	10	10	10	10	10	10	10	7	10	10	10	10	10	10	10	10	10	10	10	10	10	10	10
Exxon 3	10	10	10	10	10	10	10	10	7	10	10	10	10	10	10	10	10	10	10	10	10	10	10	10
Morgans Point	10	10	10	10	10	10	10	10	7	10	10	10	10	10	10	10	10	10	10	10	10	10	10	10
75/76	10	10	10	10	10	10	10	10	6	10	10	10	10	10	10	10	10	10	10	10	10	10	9	9
63/64	10	10	10	10	10	10	10	10	6	10	10	10	10	10	10	10	10	10	10	10	10	10	9	9
51/52	10	10	10	10	10	10	10	10	6	10	10	10	10	10	10	10	10	10	10	10	10	10	9	9
37/38	10	10	10	10	10	10	10	10	10	10	10	10	10	10	10	10	10	10	10	10	10	10	10	9
25/26	10	10	10	10	10	10	10	10	10	10	10	10	10	10	10	10	10	10	10	10	10	10	10	9
11/12	10	10	10	10	10	10	10	10	10	10	10	10	10	10	10	10	10	10	10	10	10	10	10	10
1 & 2 Bravo	10	10	10	10	10	10	10	10	10	10	10	10	10	10	10	10	10	10	10	10	10	10	10	10

NOTE: This is automated data that may/may not agree with the official BAM thinking that's found on the daily slides or special visibility report slides. This data should be used as a guide only

Houston Pilots Wind Chart



Example

Sustained wind 13 Knots
Gusts 18 Knots
Wind from the N

WS: 13
G:18
N

Time Knots	Mon 11pm	Tue 12am	Tue 1am	Tue 2am	Tue 3am	Tue 4am	Tue 5am	Tue 6am	Tue 7am	Tue 8am	Tue 9am	Tue 10am	Tue 11am	Tue 12pm	Tue 1pm	Tue 2pm	Tue 3pm	Tue 4pm	Tue 5pm	Tue 6pm	Tue 7pm	Tue 8pm	Tue 9pm	Tue 10pm
610 Bridge	1	1	1	1	1	1	1	1	2	2	2	3	3	3	4	4	5	5	5	5	5	4	3	3
	4	4	4	3	3	4	4	4	5	5	5	6	6	7	8	9	9	10	10	9	10	8	7	6
Kinder 1	1	1	1	1	1	1	1	1	2	2	2	3	3	3	4	5	5	5	5	5	5	4	3	3
	4	4	4	3	3	4	4	4	5	5	5	6	6	7	8	9	9	10	10	9	10	8	6	6
Greens Bayou	1	1	1	1	1	1	1	1	2	2	2	3	3	3	4	5	5	5	5	5	5	4	3	3
	4	4	4	3	3	4	4	4	5	5	5	6	6	7	8	9	9	10	10	9	9	7	6	6
Shell Crude	1	1	1	1	1	1	1	1	2	2	2	3	3	3	4	5	5	5	5	5	5	4	3	3
	4	4	4	3	3	4	4	4	5	5	5	6	6	7	8	9	9	9	10	9	9	7	6	6
Lynchburg Ferries	1	1	1	1	1	1	1	1	2	2	2	3	3	3	4	5	5	5	5	5	5	4	3	2
	3	3	4	3	3	4	4	4	5	5	5	6	6	7	8	9	9	10	10	9	9	7	6	5
Exxon 3	3	3	3	3	3	3	3	3	3	3	3	4	4	4	5	5	6	7	7	7	6	5	5	4
	5	5	4	5	5	5	5	5	6	6	6	7	7	8	9	10	10	11	11	10	10	8	7	6
Morgans Point	3	3	3	3	3	3	3	3	3	3	3	4	4	4	5	5	6	7	7	7	6	5	5	4
	5	5	4	5	5	5	5	5	6	6	6	7	7	8	9	10	10	11	11	10	10	8	7	6
75/76	3	3	3	3	3	3	3	3	4	4	4	5	5	5	5	5	6	7	7	7	6	5	5	5
	5	5	5	5	5	5	5	6	6	6	6	8	8	8	10	10	11	11	11	10	10	9	8	7
63/64	3	3	3	3	3	3	3	3	4	4	4	5	5	5	5	5	5	6	6	6	6	6	5	5
	5	5	5	5	5	5	5	6	6	6	6	7	7	8	9	10	10	11	11	10	10	9	8	7
51/52	3	3	3	3	3	3	3	3	4	4	4	5	5	5	5	5	5	6	6	6	6	5	5	5
	5	5	5	5	5	5	5	6	6	6	6	7	8	8	9	9	10	11	11	9	9	8	7	7
37/38	3	3	3	3	3	3	3	3	4	4	4	4	4	5	5	5	5	6	6	6	6	5	5	5
	5	5	5	5	5	5	5	6	6	6	6	7	7	8	8	9	9	10	10	9	9	8	7	7
25/26	3	3	3	3	3	3	3	3	3	3	4	4	5	5	5	5	5	6	6	6	6	5	5	5
	5	5	5	5	5	5	5	6	6	6	6	7	7	8	8	8	9	9	10	9	9	8	7	7
11/12	3	3	3	3	3	3	3	3	3	3	4	4	5	5	5	5	5	6	6	6	5	5	5	5
	5	5	5	5	5	5	5	6	6	6	6	7	7	8	8	9	8	9	9	8	9	7	7	7
1 & 2 Bravo	3	3	4	3	3	3	3	3	4	4	4	5	5	5	5	5	5	5	5	5	5	5	5	5
	5	6	6	6	6	6	6	6	6	6	6	7	7	7	8	8	8	8	9	8	9	8	8	8
	SE	SE	ESE	SE	SE	SE	ESE	E	E	ENE	E	E	E	ESE	ESE	SE	SE	ESE	SE	SE	ESE	ESE	ESE	ESE

NOTE: This is automated data that may/may not agree with the official BAM thinking that's found on the daily slides.
This data should be used as a guide only.

Houston Pilots: Tue. 6/11/2024

Forecast Discussion

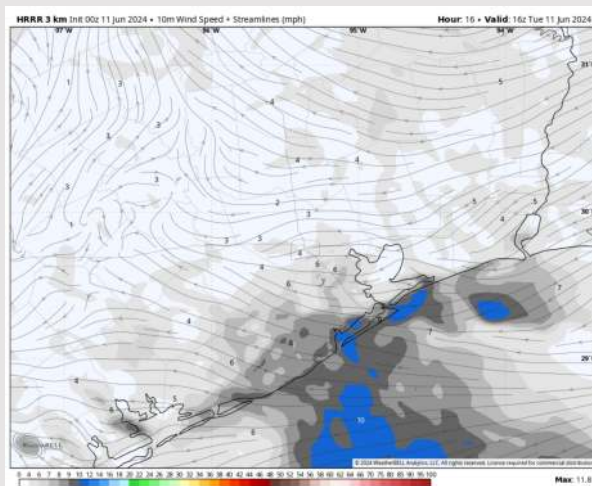
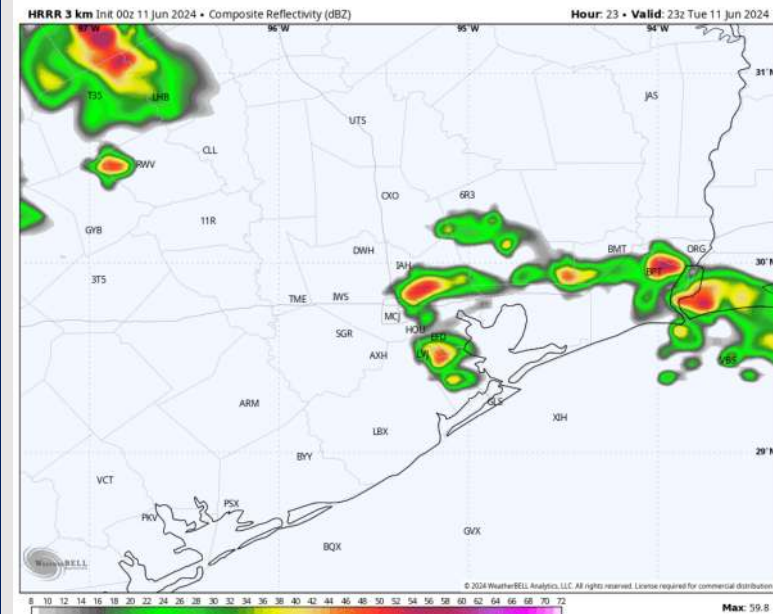
Precip: Isolated (10%) showers / storms possible for all stations through 2 PM. After 2 PM, showers/storms increase in coverage (20-30%) throughout the rest of the day. Better risks to be N of Morgan's Point.

Wind: Winds will be variable in direction through 9 AM, settling out of the SE/E after that time. **N of Morgan's Point:** Winds will be at 2-7 kts throughout the day. **S of Morgan's Point:** Winds at 5-10 kts throughout the day.

High Temps: **N of Morgan's Point:** Low 90s F. **S of Morgan's Point:** Upper 80s F.

Visibility: Not favoring visibility concerns for today.

Precip Image: 6 PM CT



Wind Speed:
11 AM CT



High Temps
Today

Houston Pilots: Wed. 6/12/2024

Forecast Discussion

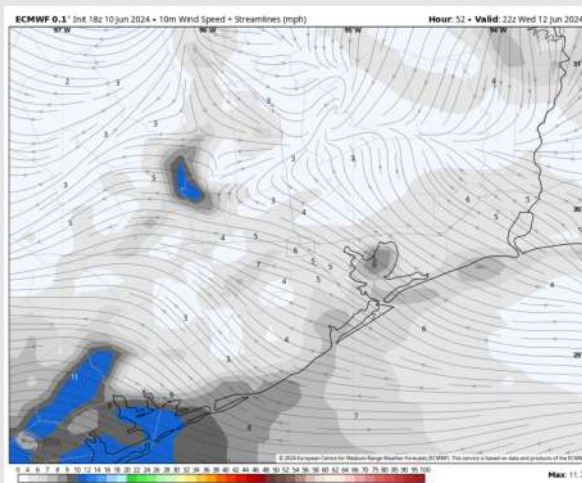
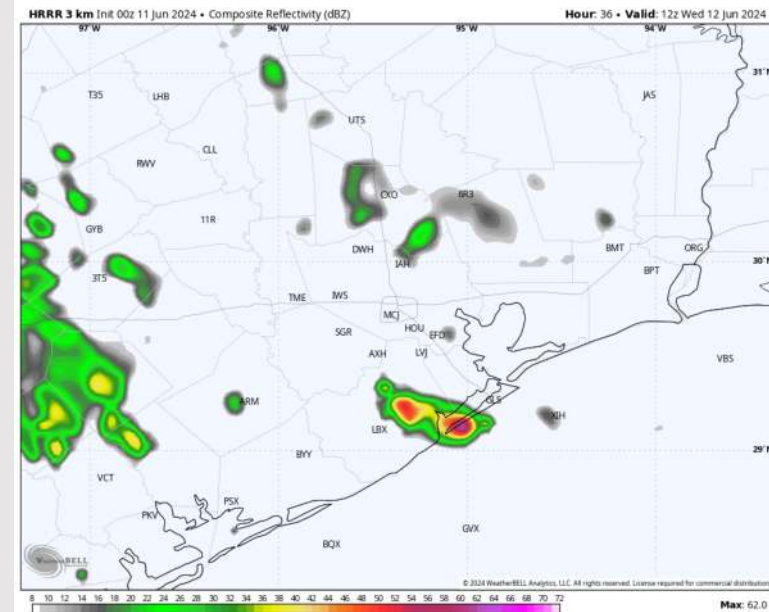
Precip: Hit/miss thunderstorms/showers (20%) possible throughout the morning and until ~5 PM. Bulk of chances favored to remain to the W of all stations. **Isolated lightning strikes will be the main threat with these, isolated pockets of 20-25 kts wind gusts possible!**

Wind: Winds variable in direction through 6 AM, then gradually shifting from the NE to out of the SE through 5 PM. SE winds then continue after that time. **N of Morgan's Point:** Winds at 3-8 kts throughout Wednesday. **S of Morgan's Point:** Winds at 5-10 kts throughout the day.

High Temps: **N of Morgan's Point:** Near 90 F **S of Morgan's Point:** Upper 80s F.

Visibility: Not favoring any visibility concerns for Wednesday.

Precip Image: 7 AM CT



Wind Speed:
5 PM CT



High Temps
Wednesday

Houston Pilots: Thu. 6/13/2024

Forecast Discussion

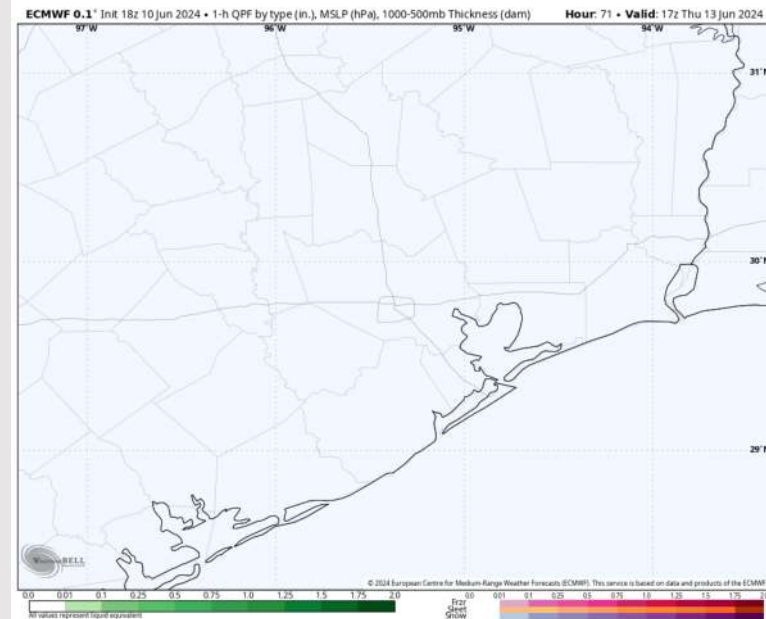
Precip: Favoring dry conditions for THU as rain chances will look to remain to the W of Stations.

Wind: Winds to become variable just after 1 AM THU, settling out of the NE by 8 AM. Winds will then gradually move clockwise throughout the day become remaining out of the SE by 7 PM. **N of Morgan's Point:** Favoring winds at 2-7kts throughout THU. **S of Morgan's Point:** Favoring winds at 2-7 kts through 4 PM before increasing to 5-10 kts the rest of the day.

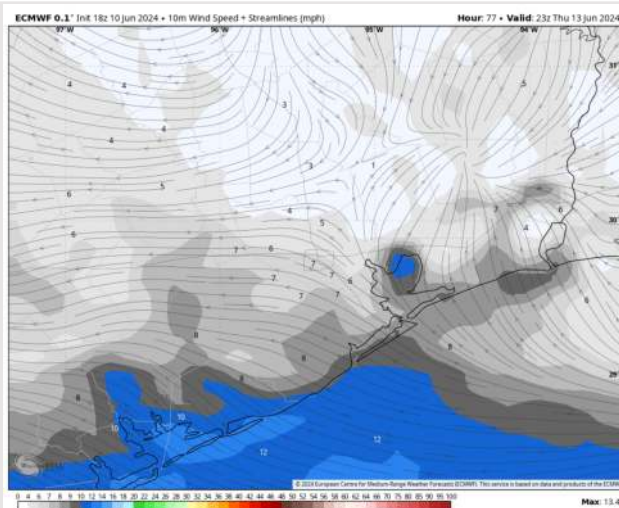
High Temps: **N of Morgan's Point:** Low 90's F. **S of Morgan's Point:** Upper 80s F.

Visibility: Not anticipating any fog risks for Thursday.

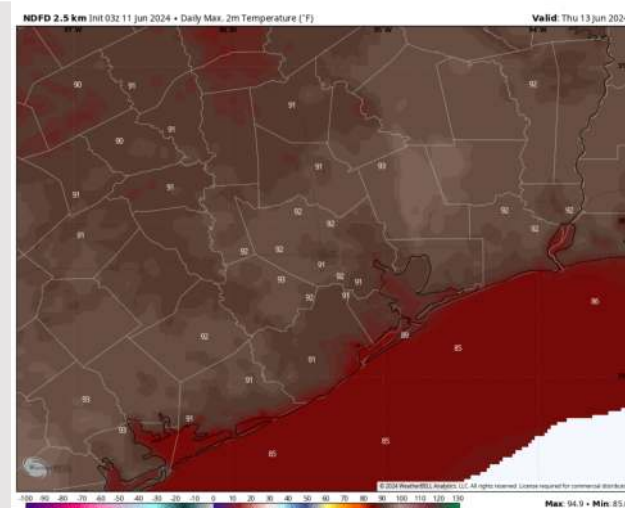
Precip Image: 12 PM CT



Wind Speed
6 PM CT

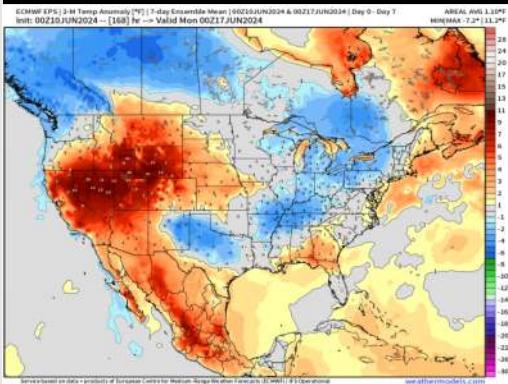


High Temps
Thursday

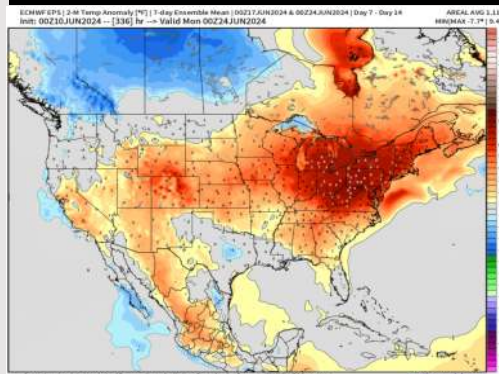


Houston Pilots: 6/10/24

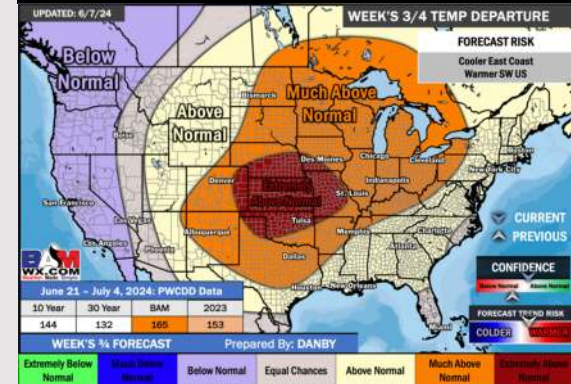
Next 7 Day Temperature Departure



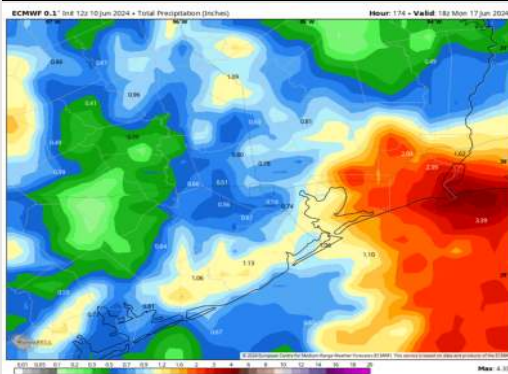
8-14 Day Temperature Departure



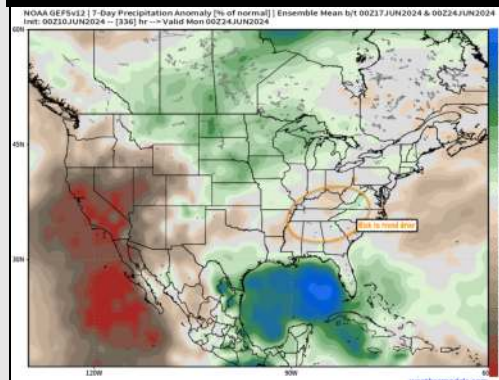
15-30 Day Temperature Departure



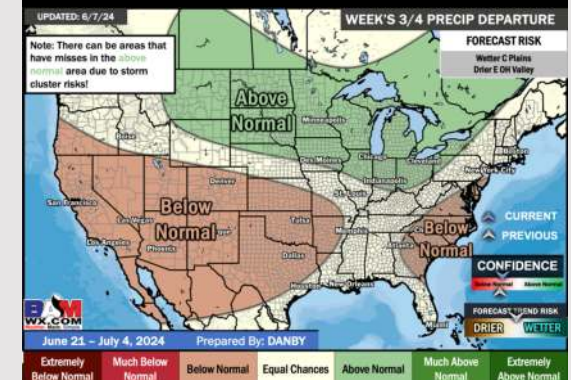
Next 7 Day Total Precipitation



8-14 Day % of Average Precip.



15-30 Day % of Average Precip.



- Temps are expected to be near normal for the week 1 timeframe. Sporadic showers/storms through WED before a drier weekend. Monitoring risk for moderate/heavy rain beginning next MON but lower confidence on exact timing/placement.
- Slightly above normal precipitation chances are at play during the week 2 timeframe. Temps are expected to be near normal for week 2.
- Near normal chances for precipitation are favored in the weeks 3/4 timeframe while temperatures are expected to be above normal.