

Houston Pilots Forecast Package



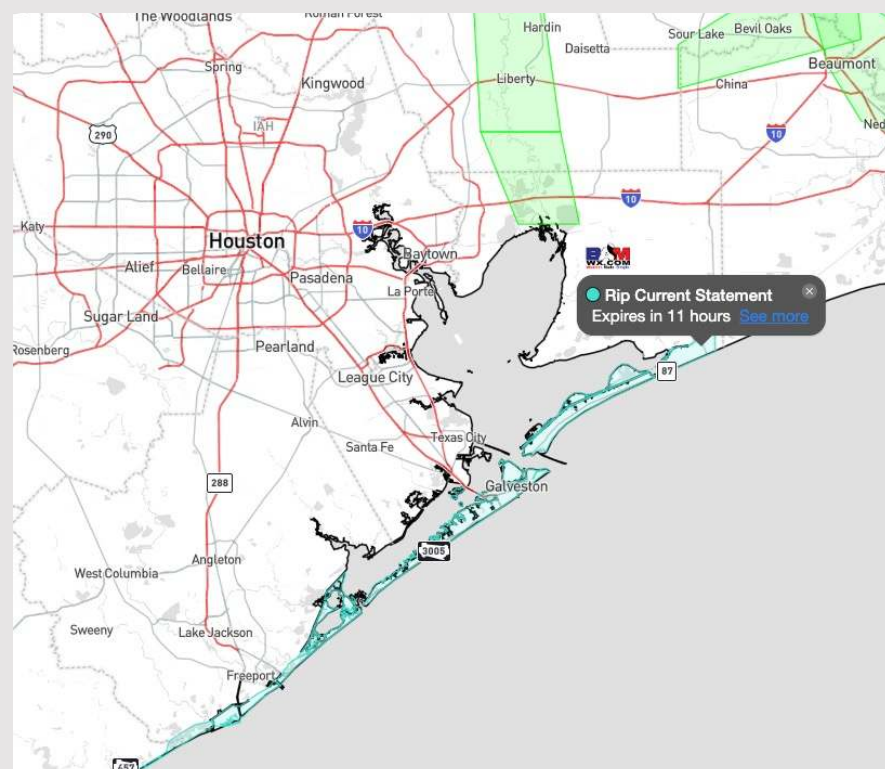
Updated: 11:20 PM CT

Monday, June 3, 2024

Forecaster: Jonathan Kipper

Weather Headlines

- Winds are expected to be elevated (especially S of Morgan's Point) through WED before seeing a calming.
- Scattered showers will be possible across the area over the next few days with mostly dry conditions still favored.
- Wave heights of 4-4.5 ft will be possible over the next two days. See wave height slide for more info.



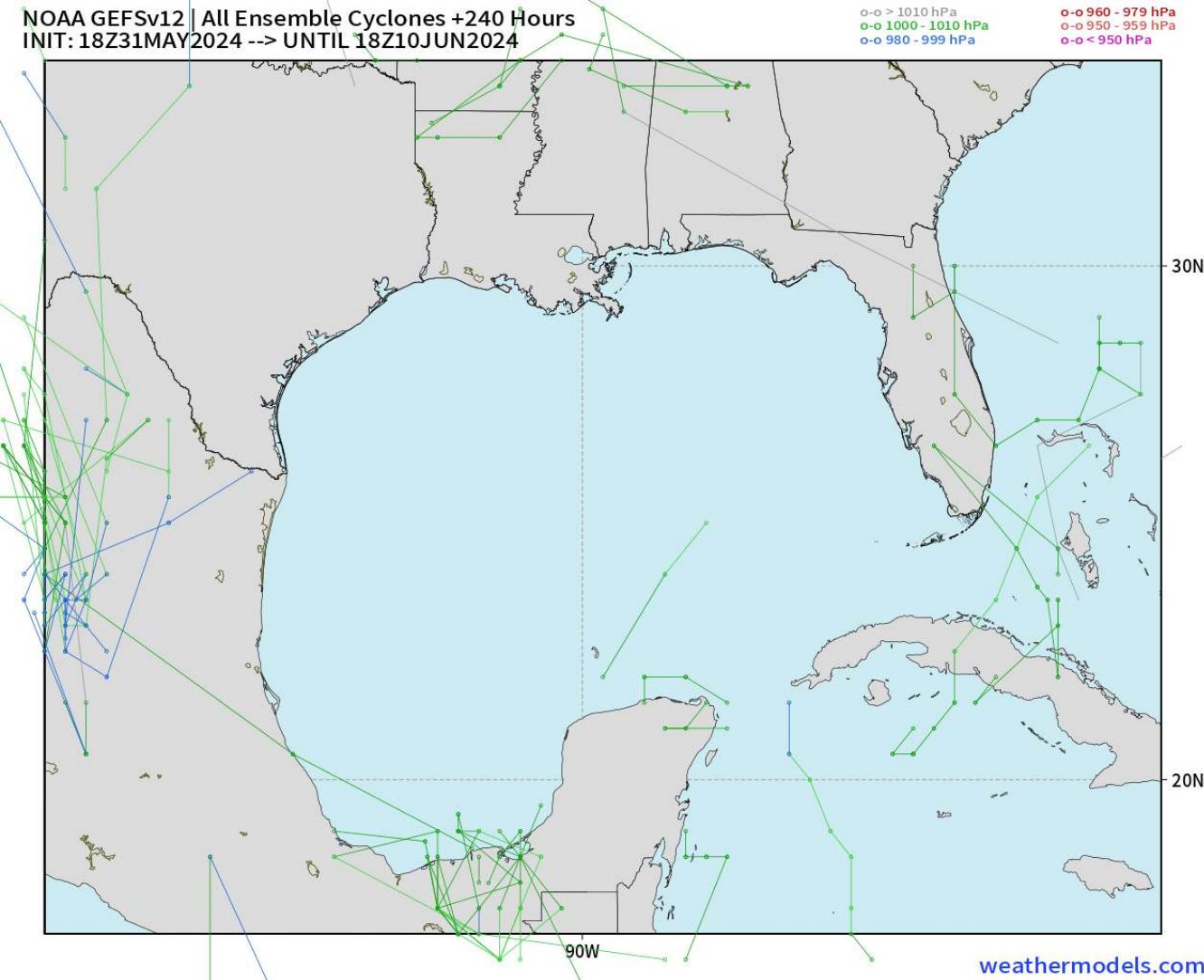
Current Radar: 11:15 PM CT



As always, please do not hesitate to reach out to us with any forecast questions via the chat option on Clarity or our on-call number, **(317)-560-8122** press 1 for forecast questions.

Houston Pilots Tropical Update

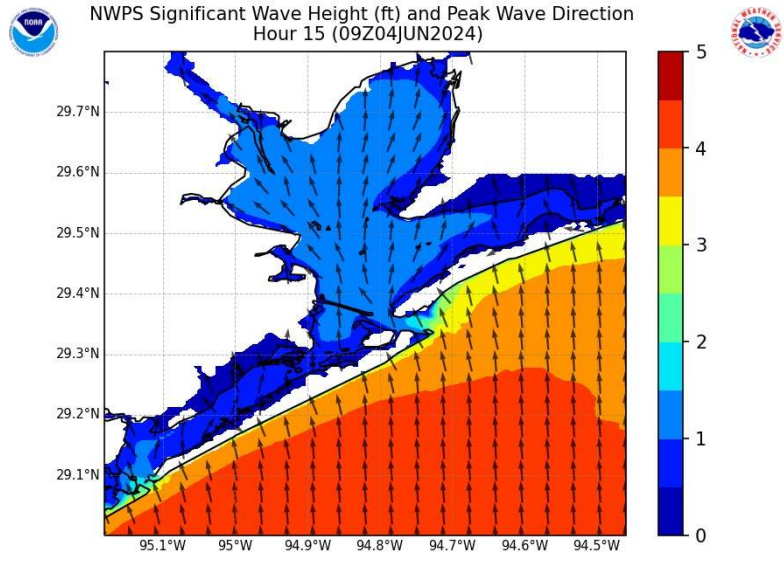
American Model Next 10 Days - Tropical Tracks



**Tropical
Development in
the Gulf of Mexico
is not favored in
the next 7-10 days.**

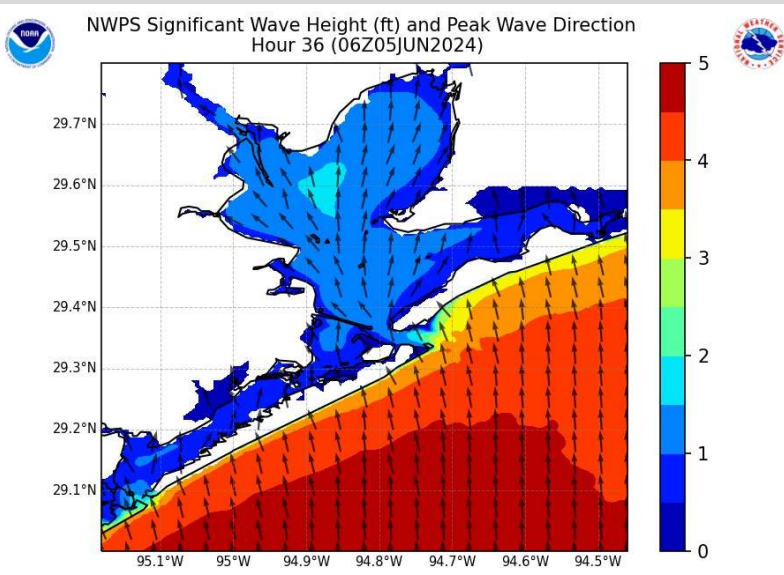
Houston Pilots Wave Height Update

Significant Wave Height Image



4 AM CT TUE

Periods of strong winds will result in increasing wave heights this morning. By 4 AM, waves heights will be in the 3.5-4 ft range at the Boarding Station.



1 AM CT WED

Waves are favored to continue to slowly increase throughout the day today. By 1 AM WED favoring wave heights in the 4' – 4.5' range near the Boarding Station.

These will continue through WED AM. Waves will decrease after noon on WED below 3.5 ft.

Houston Pilots Visibility Chart (miles)



Time	Mon 2pm	Mon 3pm	Mon 4pm	Mon 5pm	Mon 6pm	Mon 7pm	Mon 8pm	Mon 9pm	Mon 10pm	Mon 11pm	Tue 12am	Tue 1am	Tue 2am	Tue 3am	Tue 4am	Tue 5am	Tue 6am	Tue 7am	Tue 8am	Tue 9am	Tue 10am	Tue 11am	Tue 12pm	Tue 1pm
610 Bridge	10	10	10	10	10	10	10	10	10	10	10	10	10	10	10	10	9	6	4	5	6	9	9	10
Kinder 1	10	10	10	10	10	10	10	10	10	10	10	10	10	10	10	10	9	6	4	5	6	9	9	10
Greens Bayou	10	10	10	10	10	10	10	10	10	10	10	10	10	10	10	10	9	6	4	5	6	7	9	10
Shell Crude	10	10	10	10	10	10	10	10	10	10	10	10	10	10	10	9	9	6	4	5	6	7	9	10
Lynchburg Ferries	10	10	10	10	10	10	10	10	10	10	10	10	10	10	10	10	9	6	4	5	6	7	9	10
Exxon 3	10	10	10	10	10	10	10	10	10	10	10	10	10	10	10	9	9	6	4	5	6	7	9	10
Morgans Point	10	10	10	10	10	10	10	10	10	10	10	10	10	10	10	9	9	6	4	5	6	7	7	10
75/76	10	10	10	10	10	10	9	10	10	10	10	10	10	10	9	9	7	6	4	4	5	6	6	10
63/64	10	10	10	10	10	10	9	10	10	10	10	10	10	10	9	9	7	6	4	4	5	6	6	10
51/52	10	10	10	10	10	10	9	10	10	10	10	10	10	9	7	9	7	5	4	4	5	5	6	9
37/38	10	10	10	10	10	10	9	10	10	10	10	10	10	9	7	9	7	5	4	4	5	5	6	9
25/26	10	10	10	10	10	9	6	10	10	10	10	10	10	9	9	9	7	5	4	4	5	5	5	9
11/12	10	10	10	10	10	9	6	10	10	10	10	10	10	9	6	7	7	5	4	4	5	5	5	9
1 & 2 Bravo	7	6	6	6	7	6	6	7	9	7	9	7	6	6	6	6	6	4	4	3	4	4	4	9

NOTE: This is automated data that may/may not agree with the official BAM thinking that's found on the daily slides or special visibility report slides. This data should be used as a guide only

Houston Pilots Wind Chart



Forecast Confidence



Sustained wind 13 Knots
Gusts 18 Knots
Wind from the N

Example

WS: 13
G:18
N

Time Knots	Mon 2pm	Mon 3pm	Mon 4pm	Mon 5pm	Mon 6pm	Mon 7pm	Mon 8pm	Mon 9pm	Mon 10pm	Mon 11pm	Tue 12am	Tue 1am	Tue 2am	Tue 3am	Tue 4am	Tue 5am	Tue 6am	Tue 7am	Tue 8am	Tue 9am	Tue 10am	Tue 11am	Tue 12pm	Tue 1pm
610 Bridge	12	12	13	12	12	11	11	10	9	9	9	9	9	9	9	8	8	8	9	9	10	11	11	11
	23	24	24	24	23	21	21	20	19	19	19	18	18	18	18	17	17	16	17	19	20	21	23	23
	S	S	S	SSE	SSE	SSE	SSE	SSE	SSE	SSE	SSE	SSE	S	SSE	S	S	S	S	S	S	S	S	S	S
Kinder 1	11	12	12	12	11	11	10	9	9	9	9	9	9	9	9	8	8	8	9	9	10	11	11	11
	23	24	24	24	23	21	21	20	19	19	19	18	18	18	18	17	17	16	17	19	20	21	23	23
	S	S	SSE	SSE	SSE	SSE	SSE	SSE	SSE	SSE	SSE	SSE	S	SSE	S	S	S	S	S	S	S	S	S	S
Greens Bayou	11	12	12	12	12	11	10	9	9	9	9	9	9	9	9	8	8	8	9	9	10	11	11	11
	23	23	23	23	23	21	20	20	19	19	18	18	18	18	18	17	17	16	17	19	20	21	22	22
	S	S	SSE	SSE	SSE	SSE	SSE	SSE	SSE	SSE	SSE	SSE	S	SSE	S	S	S	SSE	S	S	S	S	S	S
Shell Crude	11	12	12	12	11	11	10	9	9	9	9	9	9	9	9	8	8	8	9	9	10	11	11	12
	23	23	23	23	22	21	20	20	19	19	19	18	18	18	18	17	17	17	17	19	20	21	22	22
	S	S	SSE	SSE	SSE	SSE	SSE	SSE	SSE	SSE	SSE	SSE	S	SSE	S	S	S	S	S	S	S	S	S	S
Lynchburg Ferries	12	13	13	13	12	11	10	9	9	9	9	9	8	8	9	8	8	8	9	9	10	11	12	12
	23	23	23	23	22	21	20	20	19	19	19	18	18	18	18	17	17	16	17	19	20	21	22	22
	SSE	SSE	SSE	SSE	SSE	SSE	SSE	SSE	SSE	SSE	SSE	SSE	S	S	S	SSE	S	SSE	S	S	S	S	S	S
Exxon 3	14	15	15	15	15	14	14	14	13	14	14	13	14	14	13	13	13	13	13	13	13	13	14	14
	23	23	23	23	23	21	21	21	21	21	20	20	20	20	20	19	19	18	19	19	21	21	23	23
	SSE	SSE	SSE	SSE	SSE	SSE	SSE	SSE	SSE	SSE	SSE	S	S	S	S	S	S	S	S	S	S	S	S	S
Morgans Point	14	15	15	15	15	14	14	14	13	14	14	13	14	14	14	13	13	13	13	13	13	13	14	14
	23	23	23	23	23	22	21	21	21	21	21	20	20	20	20	20	19	19	19	19	21	21	23	23
	SSE	SSE	SSE	SSE	SSE	SSE	SSE	SSE	SSE	SSE	SSE	S	S	S	S	S	S	S	S	S	S	S	S	S
75/76	15	15	15	16	16	15	15	15	15	15	15	15	15	15	15	15	15	15	15	15	15	15	15	15
	24	24	24	24	24	23	23	23	22	22	22	22	22	22	22	22	22	21	21	21	22	23	23	24
	SSE	SSE	SSE	SSE	SSE	SSE	SSE	SSE	SSE	SSE	SSE	S	S	S	S	S	S	S	S	S	S	S	S	S
63/64	16	16	16	16	16	15	15	15	15	15	15	15	15	16	16	15	15	15	15	15	15	15	15	15
	24	24	24	24	24	23	23	23	22	22	21	22	22	23	23	22	22	21	22	22	22	23	23	24
	SSE	SSE	SSE	SSE	SSE	SSE	SSE	SSE	SSE	SSE	SSE	S	S	S	S	S	S	S	S	S	S	S	S	S
51/52	15	16	16	16	16	15	15	16	15	15	15	15	16	16	16	16	16	15	15	16	15	15	15	15
	23	23	24	24	23	22	22	23	22	22	21	22	22	23	23	23	23	22	22	23	23	23	23	23
	SSE	SSE	SSE	SSE	SSE	SSE	SSE	SSE	SSE	SSE	SSE	S	S	S	S	S	S	S	S	S	S	S	S	S
37/38	15	16	16	16	16	15	15	15	15	15	15	15	16	16	16	17	16	15	16	16	15	15	15	15
	23	23	24	24	23	22	22	23	22	22	21	22	22	23	23	23	23	22	22	22	23	23	23	23
	S	SSE	SSE	SSE	SSE	SSE	SSE	SSE	SSE	SSE	SSE	S	S	S	S	S	S	S	S	S	S	S	S	S
25/26	15	15	15	15	15	15	15	15	15	15	15	15	15	15	15	16	15	15	15	15	15	15	15	15
	23	23	24	23	23	22	22	22	22	21	21	21	22	23	23	23	23	22	22	22	23	23	23	23
	SSE	SSE	SSE	SSE	SSE	SSE	SSE	SSE	SSE	SSE	SSE	S	S	S	S	S	S	S	S	S	S	S	S	S
11/12	15	15	15	15	14	14	14	14	13	13	13	13	14	14	14	15	14	14	15	15	15	15	15	14
	22	23	22	22	22	21	21	21	21	21	21	21	21	22	22	22	22	21	21	21	21	22	22	21
	SSE	SSE	SSE	SSE	SSE	SSE	SSE	SSE	SSE	SSE	SSE	S	S	S	S	S	S	S	S	S	S	S	S	S
1 & 2 Bravo	15	15	15	16	16	15	16	16	16	16	16	15	16	17	17	17	17	16	17	17	16	16	15	15
	23	23	22	23	23	22	23	23	23	22	22	22	23	23	23	23	23	23	23	23	22	23	23	22
	SSE	SSE	SSE	SSE	SSE	SSE	SSE	SSE	SSE	SSE	SSE	S	S	S	S	S	S	S	S	S	S	S	S	S

NOTE: This is automated data that may/may not agree with the official BAM thinking that's found on the daily slides.
This data should be used as a guide only.

Houston Pilots: Tue. 6/4/2024

Forecast Discussion

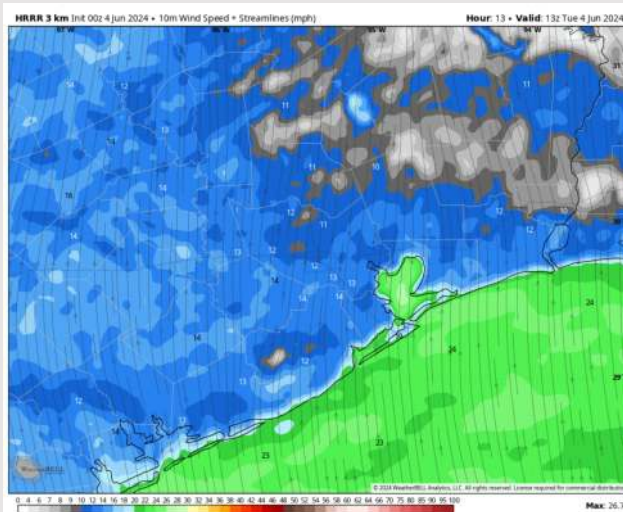
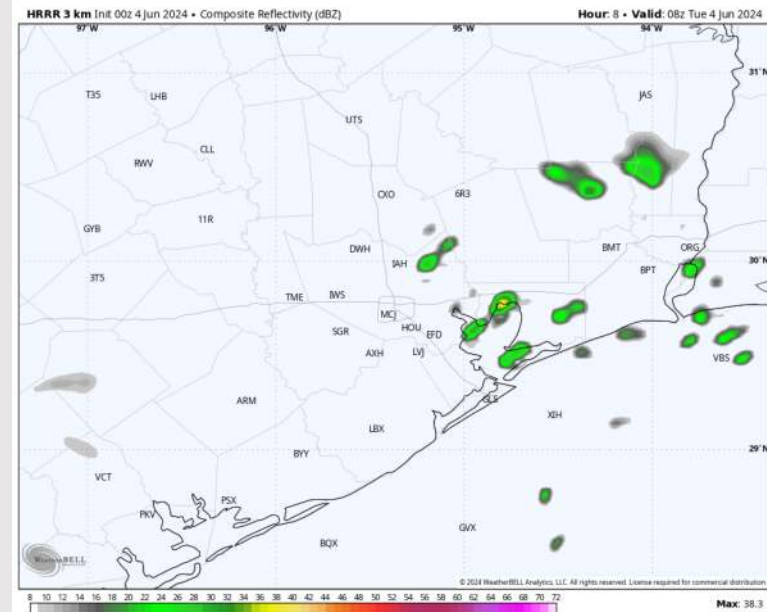
Precip: A few isolated showers will be possible working through the area between 2-10 AM CT with dry conditions favored afterwards. Majority of activity will remain to the N/NE.

Wind: Winds out of the S/SE throughout the day. **N of Morgan's Point:** Favoring winds at 7 – 12 kts through 8AM before increasing to 12 – 17 kts throughout the rest of the day. **S of Morgan's Point:** Winds at 19-23 kts. Winds then calm slightly after 12 PM to 17-22 kts the rest of the day. **Wind gusts of 22-27 kts possible after 4 AM at all stations (locally higher of 28-33 kts between 4 AM and 10 AM S of Morgan's Point)**

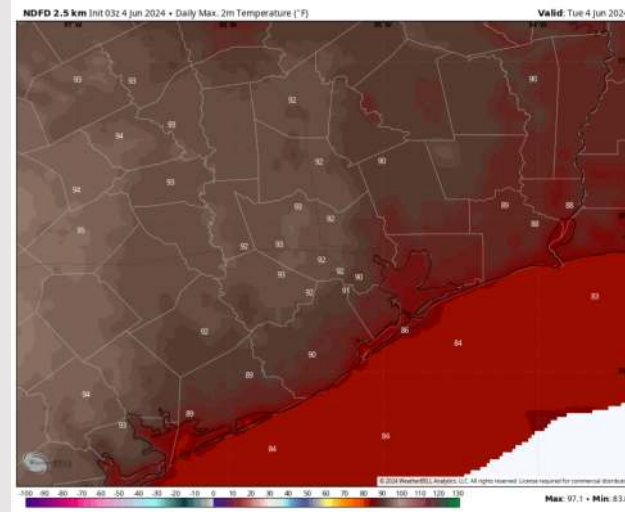
High Temps: **N of Morgan's Point:** Low 90s F. **S of Morgan's Point:** Upper 80s F.

Visibility: Not anticipating any fog risk for today.

Precip Image: 3 AM CT



Wind Speed
8 AM CT



High Temps
Today

Houston Pilots: Wed. 6/5/2024

Forecast Discussion

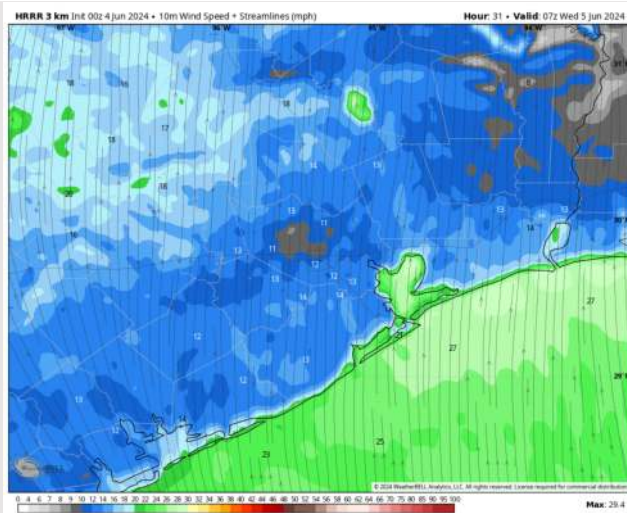
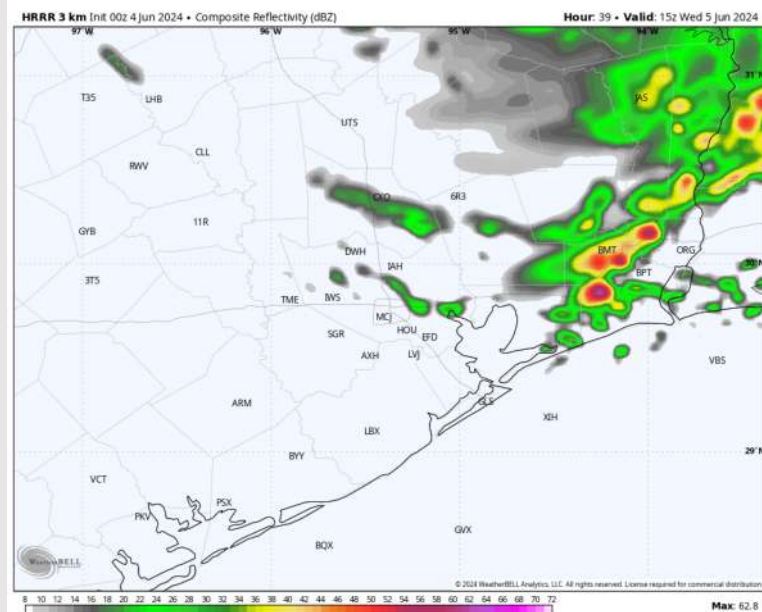
Precip: Scattered showers and storms will be able to work through the area starting at 10 AM CT WED, continuing on/off throughout the PM hours. Lower confidence remains on coverage/intensity of storms getting into WED PM.

Wind: Winds out of the S/SE throughout the day. **N of Morgan's Point:** Favoring winds at 9 – 14 kts throughout the day on WED. **S of Morgan's Point:** Favoring winds at 21 – 26 kts through 9AM, before decreasing to 12 – 17 kts for the rest of the day. **Wind gusts of 23-28 kts possible through 10 AM.**

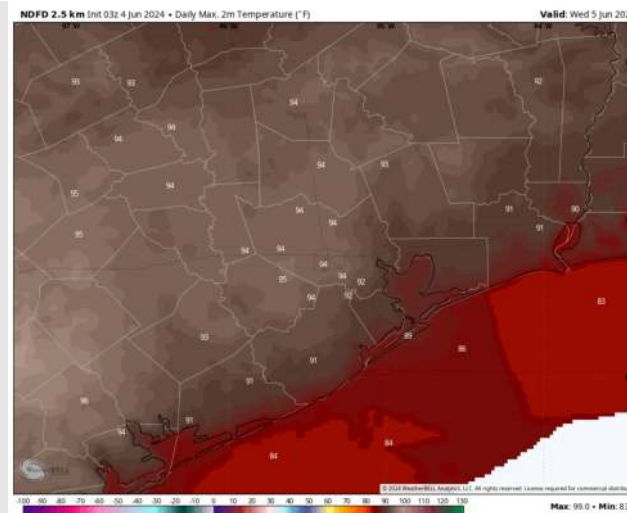
High Temps: **N of Morgan's Point:** Low/mid 90s F. **S of Morgan's Point:** Upper 80s F.

Visibility: Not anticipating any fog for Wednesday.

Precip Image: 10 AM CT



Wind Speed:
2 AM CT



High Temps
Wednesday

Houston Pilots: Thu. 6/6/2024

Forecast Discussion

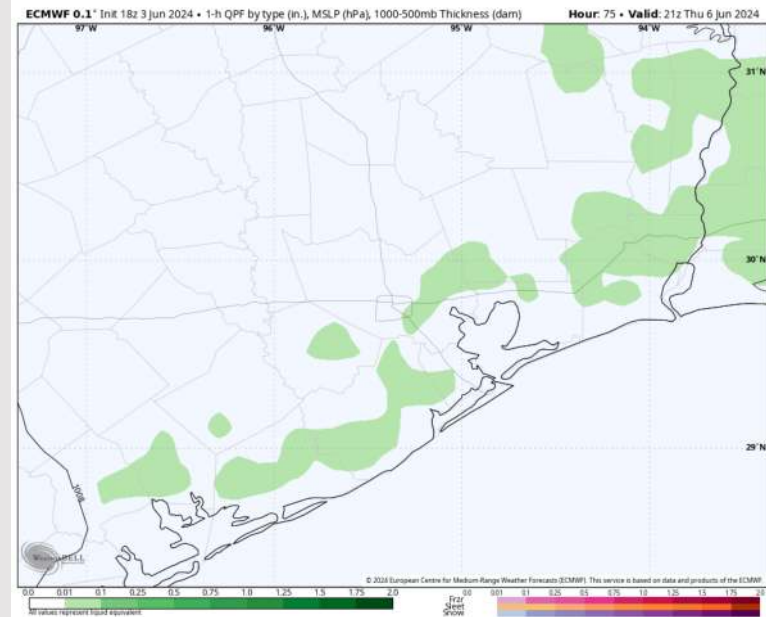
Precip: Isolated light showers will be possible from 2-8 PM CT on THU, with greatest risk to be N of stations.

Wind: Winds will be out of S/SE for Thursday. **N of Morgan's Point:** Calmer winds of 3-8 kts expected throughout the day. **S of Morgan's Point:** Winds of 9-14 kts through 10 AM before winds calm to 3-8 kts the rest of the day.

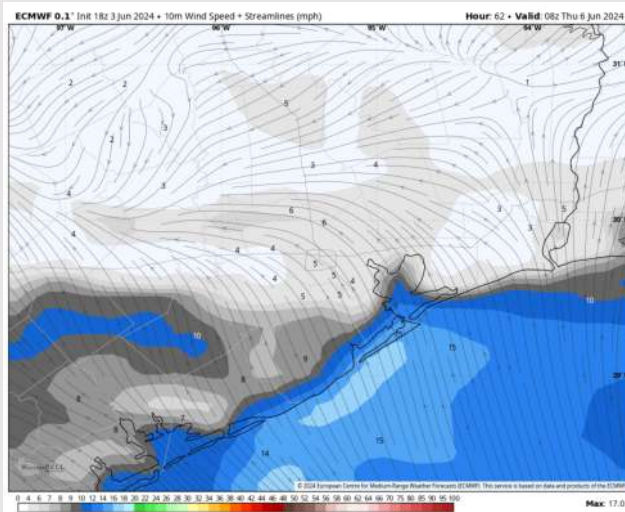
High Temps: **N of Morgan's Point:** Mid 90s F **S of Morgan's Point:** Upper 80s/Near 90 F.

Visibility: Not anticipating any fog concerns for Thursday.

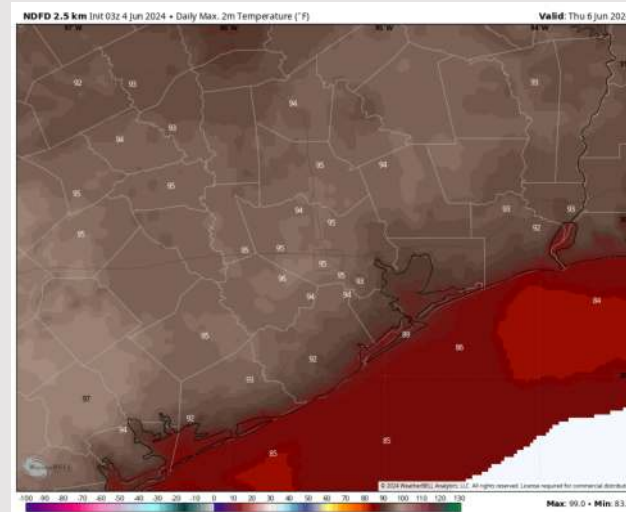
Precip Image: 4 PM CT



Wind Speed:
3 AM CT

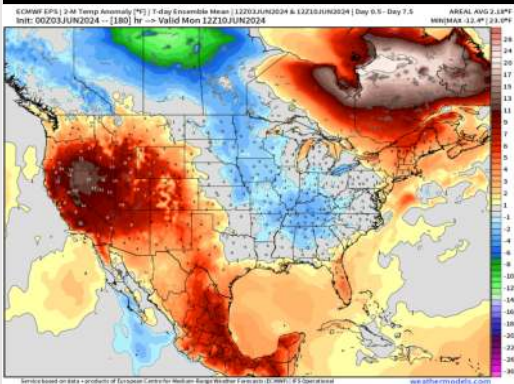


High Temps
Thursday

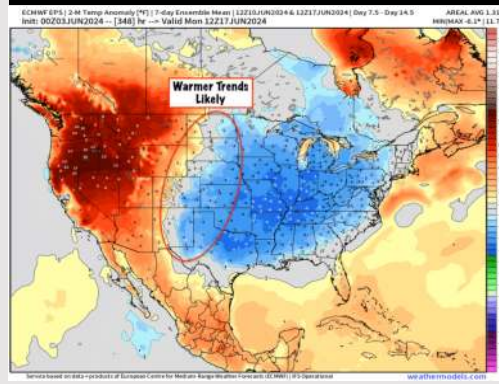


Houston Pilots: 6/3/24

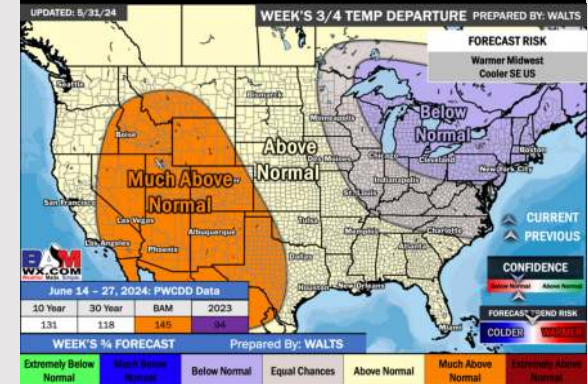
Next 7 Day Temperature Departure



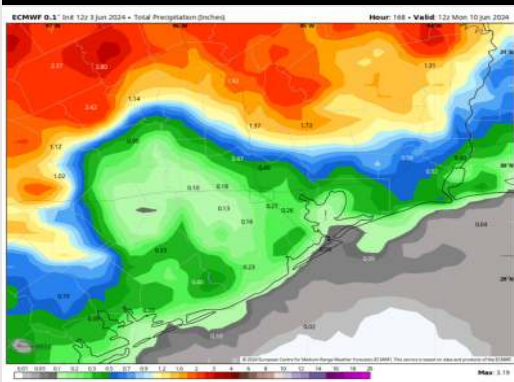
8-14 Day Temperature Departure



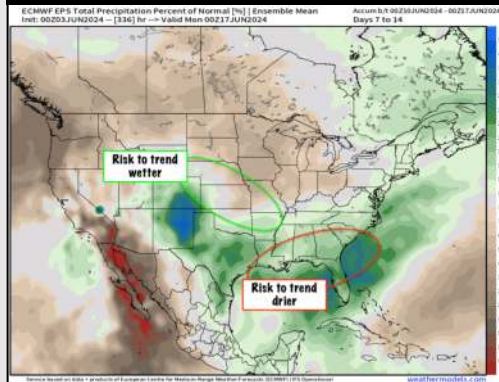
15-30 Day Temperature Departure



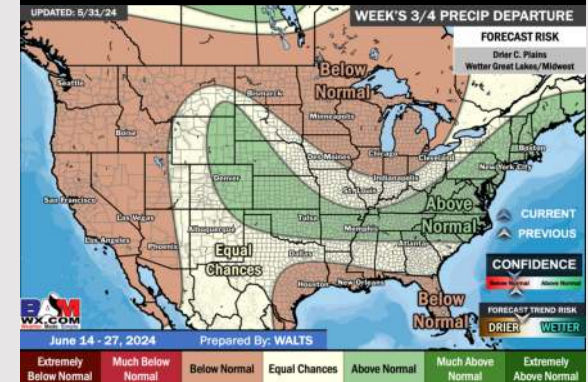
Next 7 Day Total Precipitation



8-14 Day % of Average Precip.



15-30 Day % of Average Precip.



- Temps are expected to be above normal for the week 1 timeframe. A less active pattern is favored for the upcoming week with only a few scattered rain chances expected (iso storms).
- Above normal precipitation chances are at play during the week 2 timeframe. Temps are expected to be near to below. normal.
- Below normal chances for precipitation are favored in the weeks ¾ timeframe. Temperatures expected to be above normal for the weeks 3 and 4 timeframe.