

# Houston Pilots Forecast Package

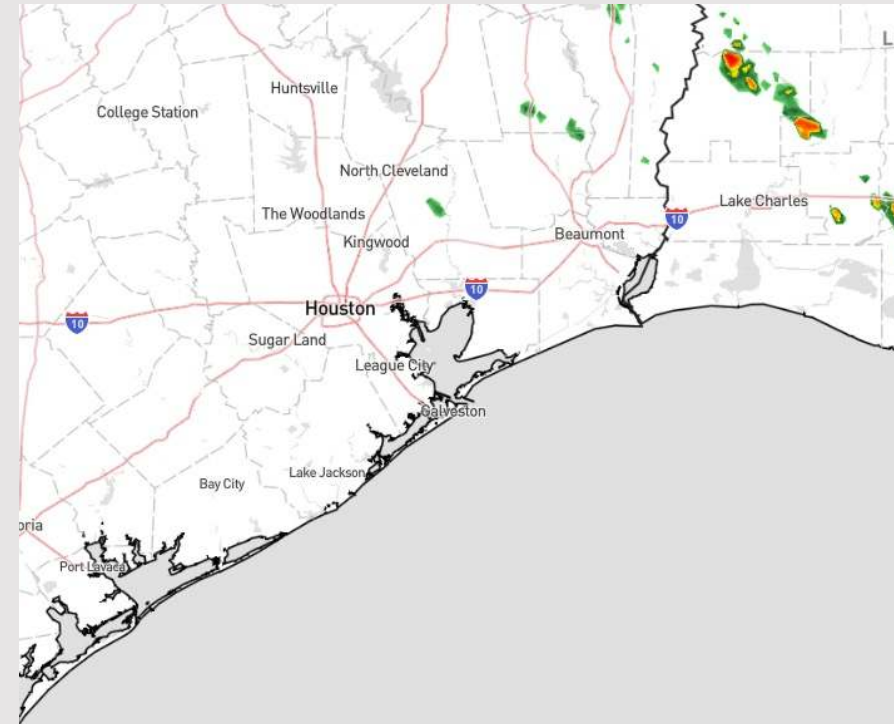


Updated: 1:15 PM CT  
Sunday, June 2, 2024

Forecaster: Jonathan Kipper

## Weather Headlines

- Winds are expected to become gradually elevated to start the week, especially S of Morgan's Point.
- PM storms will be possible N of Morgan's Point today, with drier conditions favored starting MON.
- **Wave heights for 11/12 and Boarding Station not favored to exceed 3.5 ft at any point this weekend. Next potential to see 4ft+ to be on 6/4. See wave height slide for more info.**



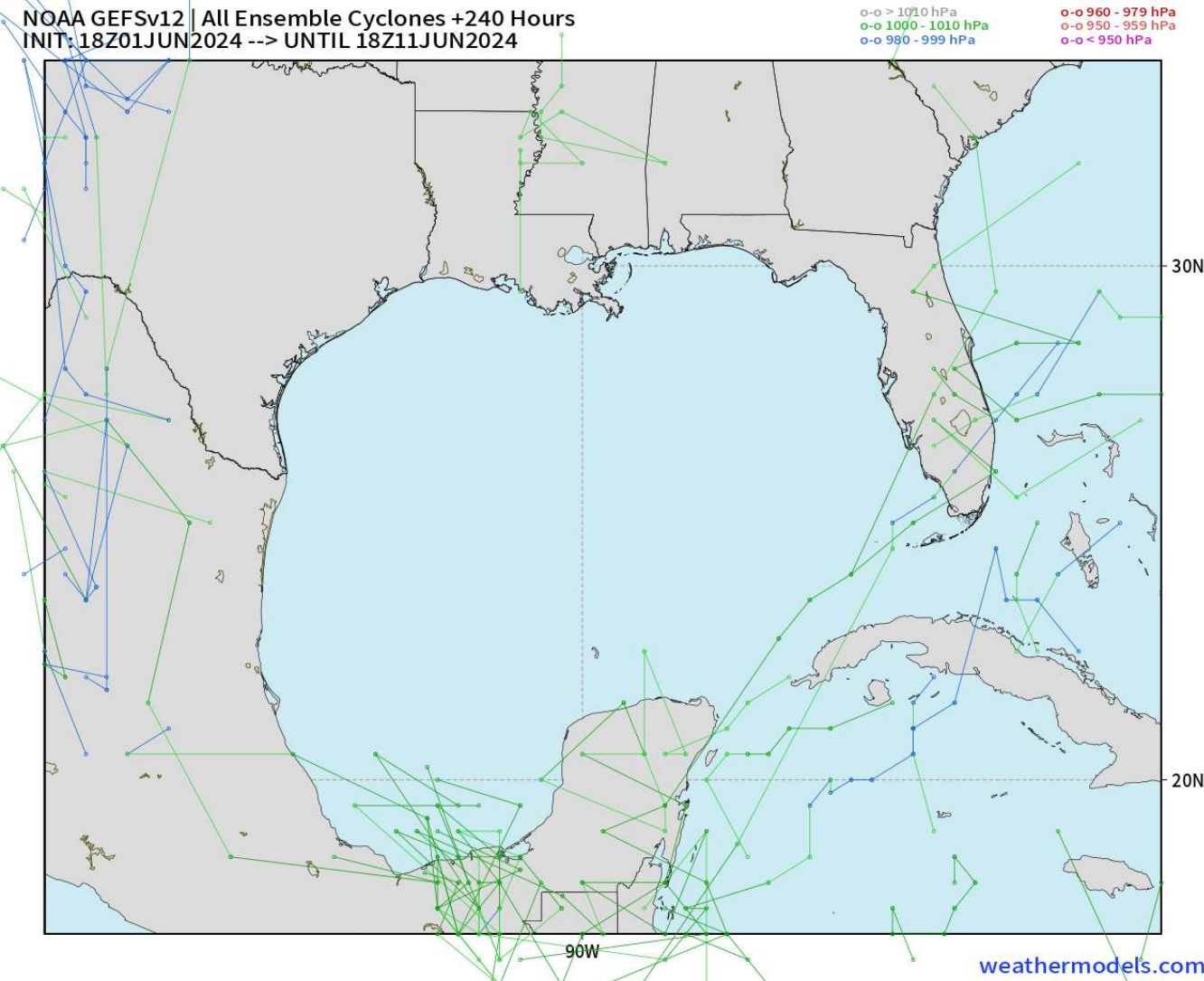
**Current Radar: 1:10 PM CT**



As always, please do not hesitate to reach out to us with any forecast questions via the chat option on Clarity or our on-call number, **(317)-560-8122** press 1 for forecast questions.

# Houston Pilots Tropical Update

## American Model Next 10 Days - Tropical Tracks

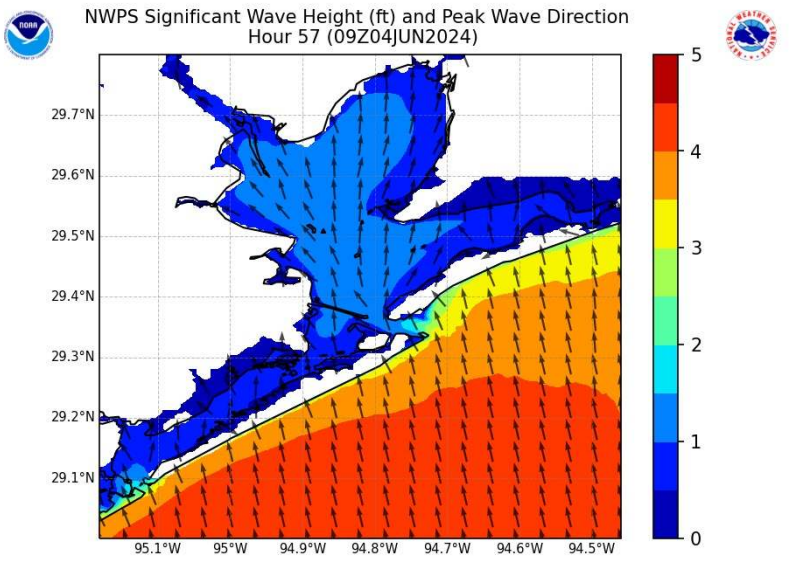


**Tropical  
Development in  
the Gulf of Mexico  
is not favored in  
the next 7-10 days.**

# Houston Pilots Wave Height Update

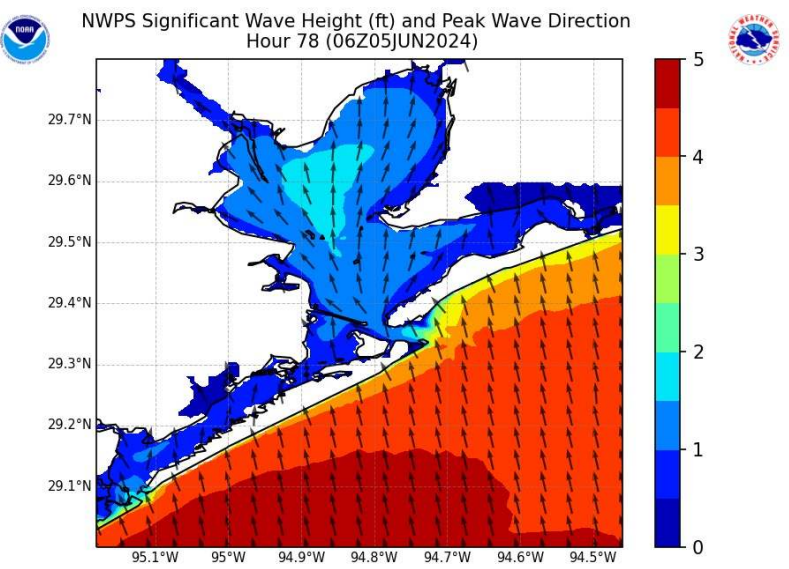


## Significant Wave Height Image



4 AM CT TUE

Periods of strong winds will result in increasing wave heights MON AM. By 10AM MON waves heights will be in the 3 – 3.5 ft range at the Boarding Station.



1 AM CT WED

Waves are favored to continue to slowly increase throughout the day on MON and into TUE AM. By 4 AM TUE favoring wave heights in the 4' – 4.5' range near the Boarding Station. These will continue through WED AM.

# Houston Pilots Visibility Chart (miles)



## Forecast Confidence



Time	Sun 1pm	Sun 2pm	Sun 3pm	Sun 4pm	Sun 5pm	Sun 6pm	Sun 7pm	Sun 8pm	Sun 9pm	Sun 10pm	Sun 11pm	Mon 12am	Mon 1am	Mon 2am	Mon 3am	Mon 4am	Mon 5am	Mon 6am	Mon 7am	Mon 8am	Mon 9am	Mon 10am	Mon 11am	Mon 12pm	
610 Bridge	10	10	10	7	9	6	9	9	10	10	7	7	6	6	6	6	6	6	6	5	4	5	6	7	9
Kinder 1	10	9	10	7	6	6	9	7	10	9	7	6	6	6	5	6	6	6	6	4	4	5	6	6	7
Greens Bayou	7	7	7	7	6	5	7	6	9	7	6	6	5	5	5	5	5	5	5	4	4	4	5	6	6
Shell Crude	6	6	7	6	6	5	6	6	7	6	6	6	5	5	5	5	5	5	5	4	4	4	5	5	6
Lynchburg Ferries	6	6	7	7	6	5	6	6	7	6	6	6	5	5	5	5	5	5	5	4	4	4	5	6	6
Exxon 3	6	6	6	6	6	5	5	6	7	6	6	6	5	5	5	5	5	5	5	4	4	4	5	5	6
Morgans Point	5	6	6	6	6	5	5	6	7	6	6	6	5	5	5	5	5	5	5	4	4	4	4	5	5
75/76	5	6	5	6	6	6	5	5	7	6	6	6	5	5	5	5	5	5	5	4	4	4	4	4	10
63/64	5	5	5	6	6	6	5	5	7	6	6	6	5	5	5	5	5	5	5	4	4	4	4	4	10
51/52	5	5	5	6	6	6	5	5	7	6	6	5	5	5	5	5	5	5	5	4	4	4	4	4	10
37/38	5	5	5	6	6	6	5	5	7	6	6	5	5	5	5	5	5	5	5	4	4	4	4	4	10
25/26	5	5	5	6	6	6	5	5	7	6	6	5	5	5	5	5	5	5	5	4	4	4	4	4	10
11/12	5	5	5	6	6	6	5	5	7	6	6	5	5	5	5	5	5	5	5	4	4	4	4	4	10
1 & 2 Bravo	5	5	5	6	5	5	5	5	6	6	5	5	5	5	5	5	5	5	5	4	4	4	4	4	10

**NOTE: This is automated data that may/may not agree with the official BAM thinking that's found on the daily slides or special visibility report slides. This data should be used as a guide only**

# Houston Pilots Wind Chart



## Forecast Confidence



Sustained wind 13 Knots  
Gusts 18 Knots  
Wind from the N

## Example

WS: 13  
G:18  
N

Time Knots	Sun 1pm	Sun 2pm	Sun 3pm	Sun 4pm	Sun 5pm	Sun 6pm	Sun 7pm	Sun 8pm	Sun 9pm	Sun 10pm	Sun 11pm	Mon 12am	Mon 1am	Mon 2am	Mon 3am	Mon 4am	Mon 5am	Mon 6am	Mon 7am	Mon 8am	Mon 9am	Mon 10am	Mon 11am	Mon 12pm	
610 Bridge	7	7	8	8	9	9	8	8	7	7	7	7	6	6	6	6	6	6	7	7	8	9	10	11	
	14	14	15	16	17	16	16	16	15	15	15	14	14	14	14	13	14	14	14	14	15	17	18	19	21
	SSE	SSE	SSE	SSE	SE	SE	SE	SE	SE	SE	SE	SSE	SSE	SSE	SSE	SSE	SSE	SSE	SE	SSE	SSE	S	S	S	
Kinder 1	7	7	8	8	9	9	8	8	7	7	7	7	6	6	6	6	6	6	7	7	8	9	10	11	
	14	14	15	16	17	16	16	16	15	15	15	14	14	14	14	13	14	14	14	14	15	17	18	19	21
	SSE	SSE	SSE	SSE	SE	SE	SE	SE	SE	SE	SE	SSE	SSE	SSE	SSE	SSE	SSE	SSE	SE	SSE	SSE	SSE	S	SSE	
Greens Bayou	7	7	8	8	9	8	8	7	7	7	7	7	6	6	6	6	6	6	7	7	8	9	10	11	
	13	14	15	16	16	15	16	15	15	15	15	14	14	14	13	13	14	14	14	15	16	18	19	20	
	SSE	SSE	SSE	SSE	SE	SE	SE	SE	SE	SE	SE	SSE	SSE	SSE	SSE	SSE	SSE	SSE	SE	SSE	SSE	S	SSE	SSE	
Shell Crude	7	7	8	8	9	8	8	7	7	7	7	7	6	6	6	6	6	6	7	7	8	9	10	11	
	13	14	15	16	16	16	16	15	15	15	15	14	14	14	14	14	14	14	14	15	17	18	19	20	
	SSE	SSE	SSE	SSE	SE	SE	SE	SE	SE	SE	SE	SSE	SSE	SSE	SSE	SSE	SSE	SSE	SE	SSE	SSE	S	S	S	
Lynchburg Ferries	7	7	8	9	9	8	8	7	7	7	7	6	6	6	6	6	6	6	7	7	8	9	10	11	
	13	14	15	16	17	16	16	15	15	15	15	14	14	14	13	13	14	14	14	15	17	18	19	20	
	SSE	SE	SSE	SSE	SE	SE	SE	SE	SE	SE	SE	SSE	SSE	SSE	SSE	SSE	SSE	SSE	SE	SSE	SSE	S	S	SSE	
Exxon 3	8	9	10	10	11	11	11	11	11	11	11	11	11	10	10	10	10	11	11	11	12	13	13	13	
	14	15	16	17	17	17	17	17	16	16	16	16	16	15	15	15	15	16	16	17	17	19	19	21	
	SSE	SSE	SSE	SSE	SE	SE	SE	SE	SE	SE	SE	SSE	SSE	SSE	SSE	SSE	SSE	SSE	SSE	SE	SSE	S	S	SSE	
Morgans Point	9	9	10	11	11	11	11	11	11	11	11	11	11	11	11	11	11	11	11	11	12	12	12	13	
	14	15	16	17	17	17	17	17	16	16	16	16	16	15	15	15	16	16	17	17	19	19	21	21	
	SSE	SSE	SSE	SSE	SSE	SE	SE	SE	SE	SE	SE	SSE	SSE	SSE	SSE	S	SSE	SSE	SSE	S	S	S	S	SSE	
75/76	9	9	10	11	11	11	12	12	12	12	12	12	12	12	12	12	12	12	13	13	13	13	13	13	
	15	16	17	18	18	18	17	18	18	18	18	18	17	17	17	17	17	17	18	19	19	19	20	21	
	SSE	SSE	SSE	SSE	SSE	SSE	SE	SE	SE	SE	SE	SSE	SSE	S	S	S	S	S	S	S	S	S	S	SSE	
63/64	9	9	10	11	11	11	12	12	12	13	13	13	13	13	13	13	13	13	13	13	13	13	13	14	
	15	16	16	18	17	18	17	18	18	18	18	18	18	17	18	18	18	18	18	19	19	20	21	22	
	SSE	SSE	SSE	SSE	SSE	SSE	SE	SE	SE	SE	SE	SSE	SSE	SSE	SSE	S	S	S	S	S	S	S	S	SSE	
51/52	9	9	10	11	11	11	12	12	13	13	13	13	13	13	13	13	13	13	13	13	14	14	14	14	
	15	15	16	17	17	17	17	18	18	18	18	18	18	18	18	18	18	18	19	19	19	20	21	21	
	SSE	SSE	SSE	SSE	SSE	SSE	SE	SE	SE	SE	SE	SSE	SSE	SSE	SSE	S	SSE	SSE	S	S	S	S	S	S	
37/38	9	9	10	11	11	11	12	12	13	13	13	13	13	13	13	13	13	13	13	13	14	14	14	14	
	15	15	16	17	17	17	17	18	18	18	18	18	18	18	18	18	18	18	19	19	19	20	21	21	
	SSE	SSE	SSE	SSE	SSE	SSE	SE	SE	SE	SE	SE	SSE	SSE	SSE	SSE	SSE	SSE	SSE	SSE	S	S	S	S	S	
25/26	9	10	10	11	11	11	11	11	12	12	12	13	13	13	13	13	13	13	13	13	13	13	14	14	
	14	15	15	17	17	17	17	18	18	18	18	18	18	18	18	18	18	18	19	19	19	20	20	21	
	SSE	SSE	SSE	SE	SSE	SSE	SE	SE	SE	SE	SE	SSE	SSE	SSE	SSE	SSE	SSE	SSE	SSE	S	S	S	S	S	
11/12	9	9	10	11	11	11	11	11	11	11	11	11	11	11	11	11	11	12	12	12	13	13	13	13	
	14	14	15	16	17	16	17	17	17	17	17	17	17	18	18	18	18	18	18	19	18	19	19	20	
	SSE	SSE	SSE	SSE	SSE	SSE	SE	SE	SE	SE	SE	SSE	SSE	SSE	SSE	SSE	SSE	SSE	SSE	SSE	S	S	S	S	
1 & 2 Bravo	9	9	10	10	11	11	12	12	13	13	13	13	13	13	13	14	13	14	14	13	14	14	14	13	
	14	14	15	16	17	17	17	18	18	19	19	19	19	19	19	19	19	19	19	19	20	19	20	20	
	SSE	SSE	SSE	SSE	SSE	SE	SE	SE	SE	SE	SE	SSE	SSE	SSE	SSE	SSE	SSE	SSE	SSE	S	SSE	S	SSE	S	

**NOTE: This is automated data that may/may not agree with the official BAM thinking that's found on the daily slides. This data should be used as a guide only.**

# Houston Pilots: Sun. 6/2/2024



## Forecast Discussion

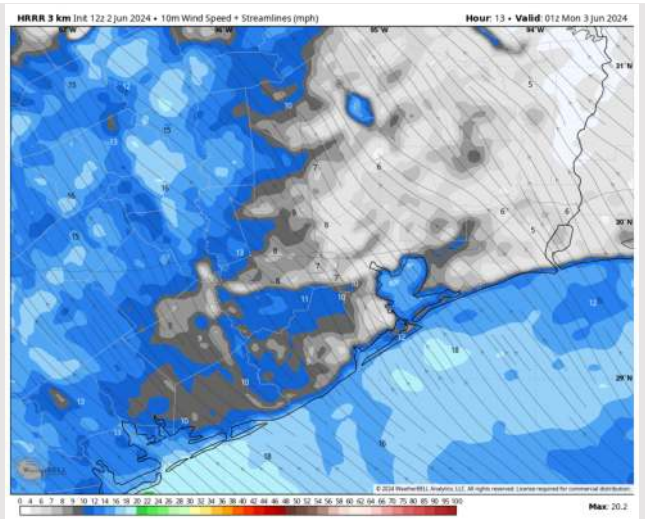
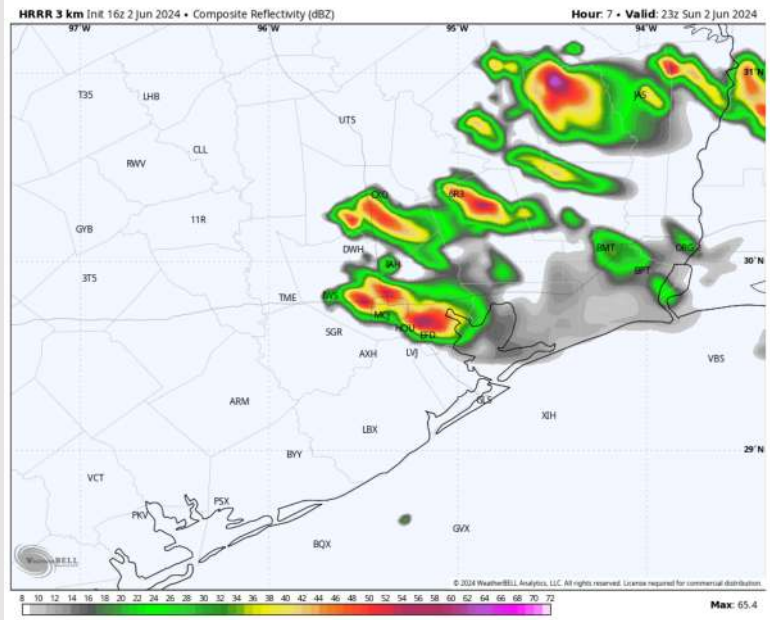
**Precip:** A few isolated (10-20%) storms will be possible for locations N of Morgan's Point between 3-7 PM CT, however better coverage is expected to remain north. **Thunderstorm wind gusts of 30-40kts, local downpours and hail possible!**

**Wind:** Winds out of the S/SE throughout the day. **N of Morgan's Point:** Favoring winds at 9-14 kts throughout the day. **S of Morgan's Point:** Winds at 12-17 kts for the remainder of the day.

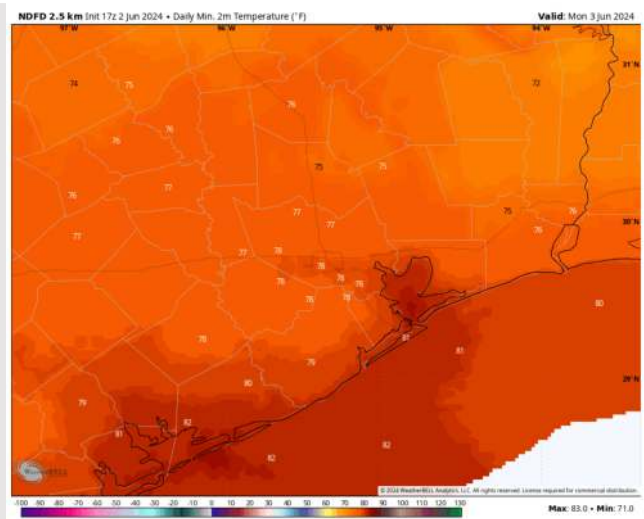
**Low Temps:** **N of Morgan's Point:** Upper 70s F. **S of Morgan's Point:** Low 80s F.

**Visibility:** Not anticipating any fog for the rest of the day.

## Precip Image: 6 PM CT



Wind Speed:  
9 PM CT



Low Temps  
MON AM

# Houston Pilots: Mon. 6/3/2024



## Forecast Discussion

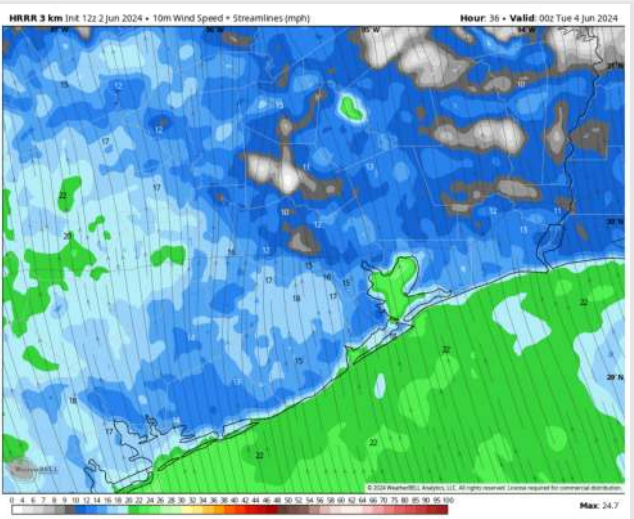
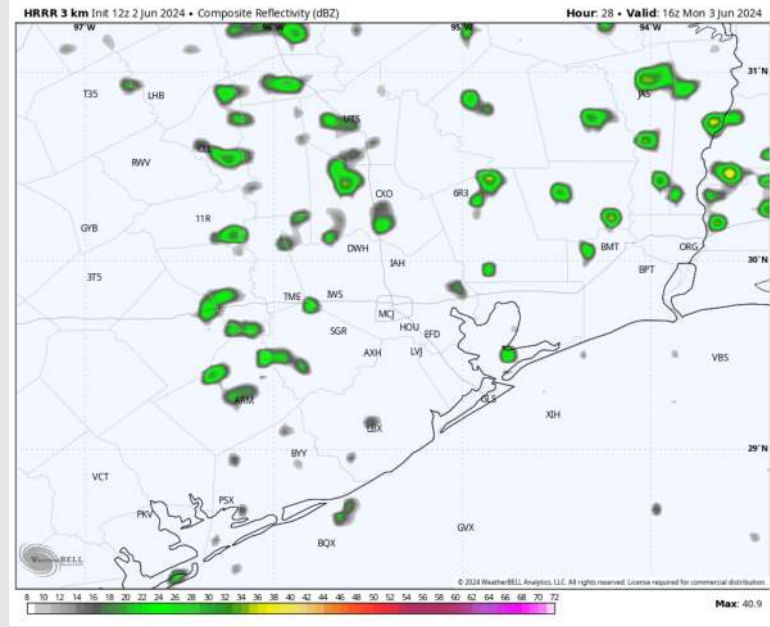
**Precip:** Favoring mostly dry conditions outside of isolated light showers from 10 AM through 3 PM.

**Wind:** Winds will be out of S/SE for the entire day. **N of Morgan's Point:** Winds at 7-12 kts through 9 AM then increase to 10-15 kts for the PM. **S of Morgan's Point:** Winds increase to 18-23 kts just after midnight and remain there throughout Monday. **Wind gusts of 22-27 kts possible after 10 AM for all stations**

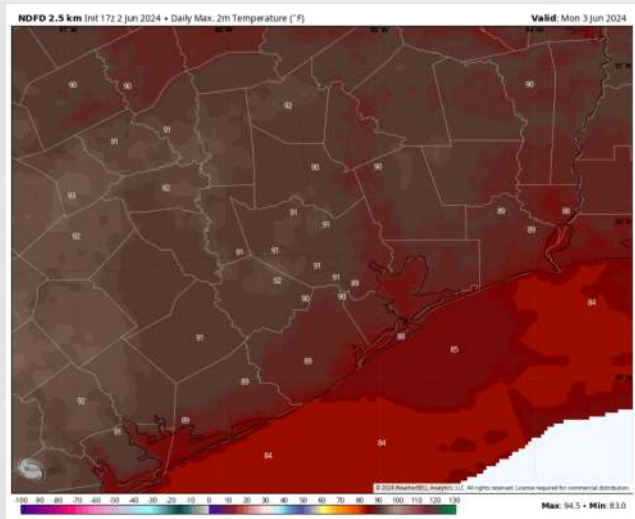
**High Temps:** **N of Morgan's Point:** Near/Low 90s F **S of Morgan's Point:** Low/Mid 80s F.

**Visibility:** Not anticipating any visibility concerns for Monday.

## Precip Image: 11 AM CT



Wind Speed:  
7 PM CT



High Temps  
Monday

# Houston Pilots: Tue. 6/4/2024



## Forecast Discussion

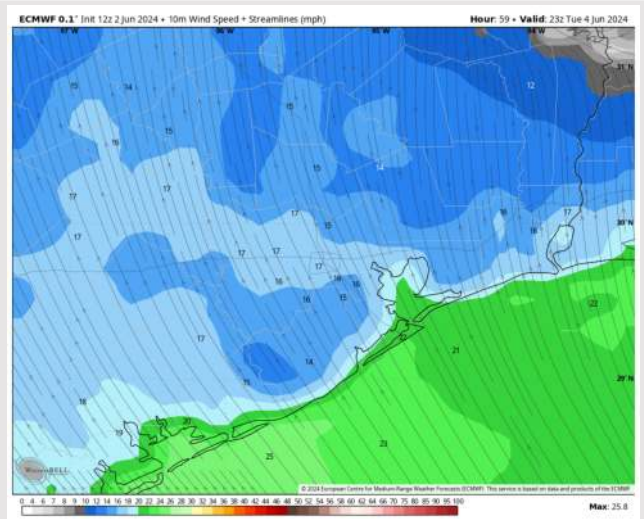
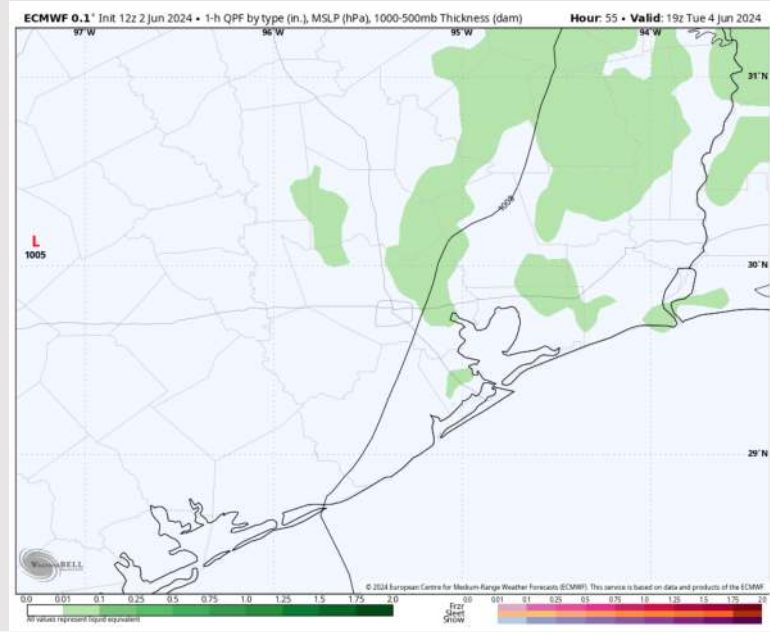
**Precip:** Favoring dry conditions aside from a window between 10AM-3PM for an isolated light shower.

**Wind:** Winds out of the S/SE throughout the day. **N of Morgan's Point:** Favoring winds at 12 - 17 kts throughout the day. **S of Morgan's Point:** Winds at 12-17 kts through 4 AM, before increasing to 21-26 kts. Winds then calm slightly after 12 PM to 19-24 kts the rest of the day. **Wind gusts of 22-27 kts possible after 4 AM at all stations (locally higher of 30-35 kts between 4 AM and 10 AM S of Morgan's Point)**

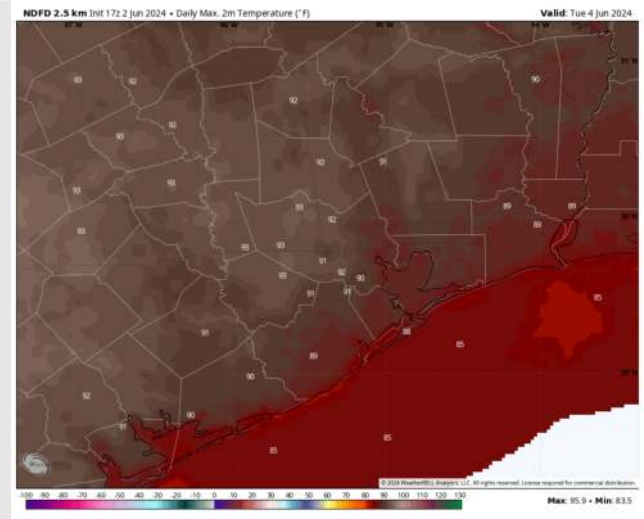
**High Temps:** **N of Morgan's Point:** Low 90s F. **S of Morgan's Point:** Upper 80s F.

**Visibility:** Not anticipating any fog risk for Tuesday.

## Precip Image: 2 PM CT



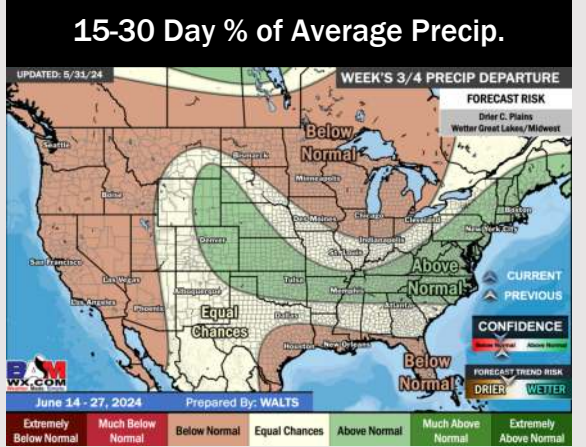
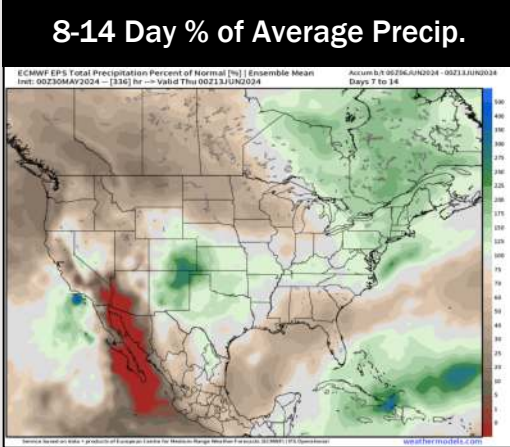
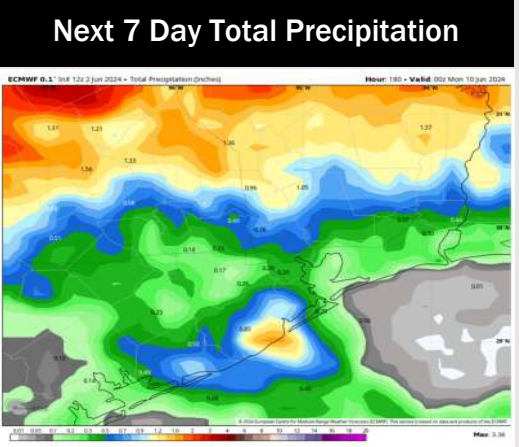
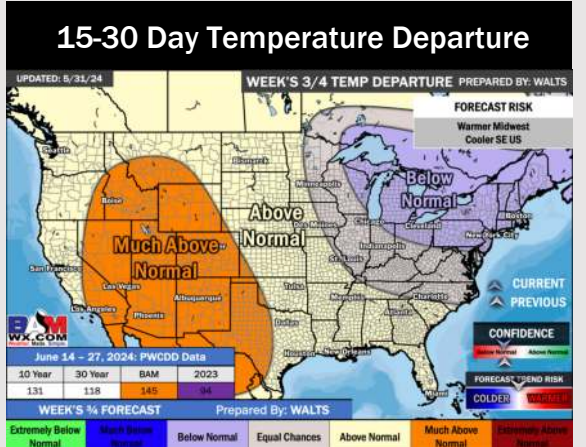
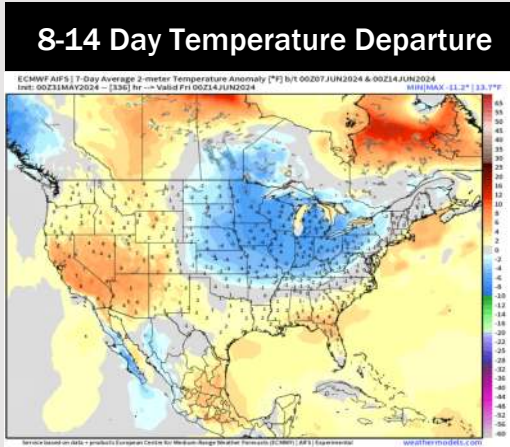
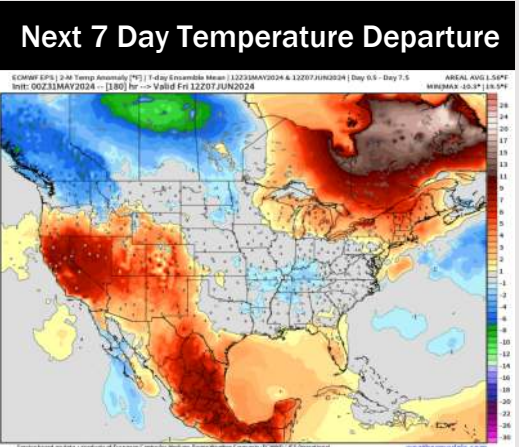
Wind Speed  
6 PM CT



High Temps  
Tuesday



# Houston Pilots: 6/2/24



- Temps are expected to be near normal for the week 1 timeframe. A less active pattern is favored for the upcoming week with only sporadic rain chances favored.
- Near normal precipitation chances are at play during the week 2 timeframe. Temps are expected to be near to above normal.
- Below normal chances for precipitation are favored in the weeks 3/4 timeframe. Temperatures expected to be above normal for the weeks 3 and 4 timeframe.