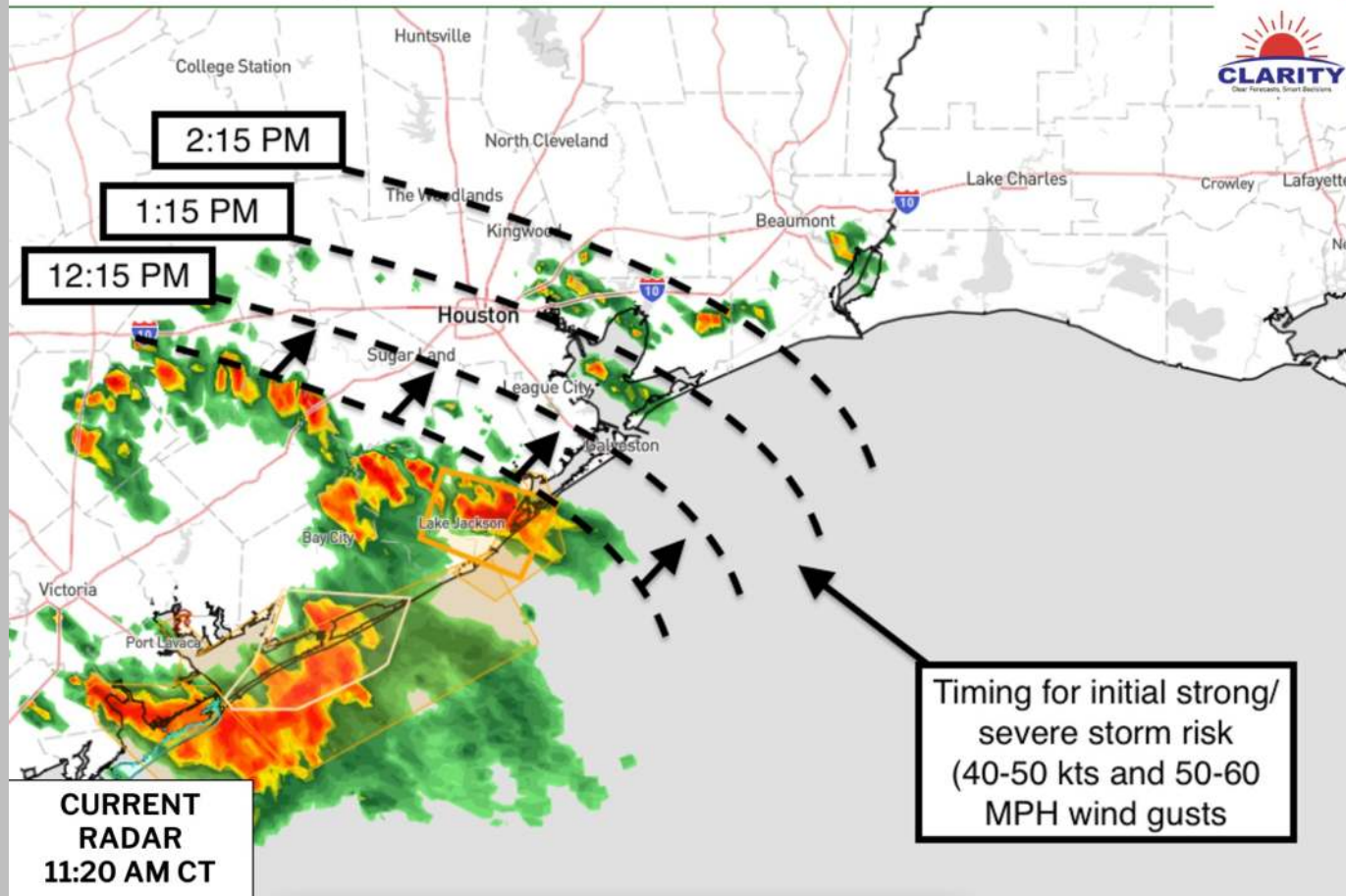


# Timing of Strong/Severe Storms SAT Afternoon



## Strong to Severe Line of Storms Timing Graphic

Forecast update as of 11:30 AM CT on June 1<sup>st</sup>

Confidence in potential severe weather: 4/5

Confidence in timing: 3.5/5

- Check the latest timing graphic above for current thinking on arrival of strong/severe storm risks
- Stronger wind gusts of 40 to 50 kts will be in play with these storms, with additional rain/storms into the afternoon
- Anticipating storms behind initial wave to be a touch weaker, with 30-40 kts wind gusts still in play

# Houston Pilots Forecast Package

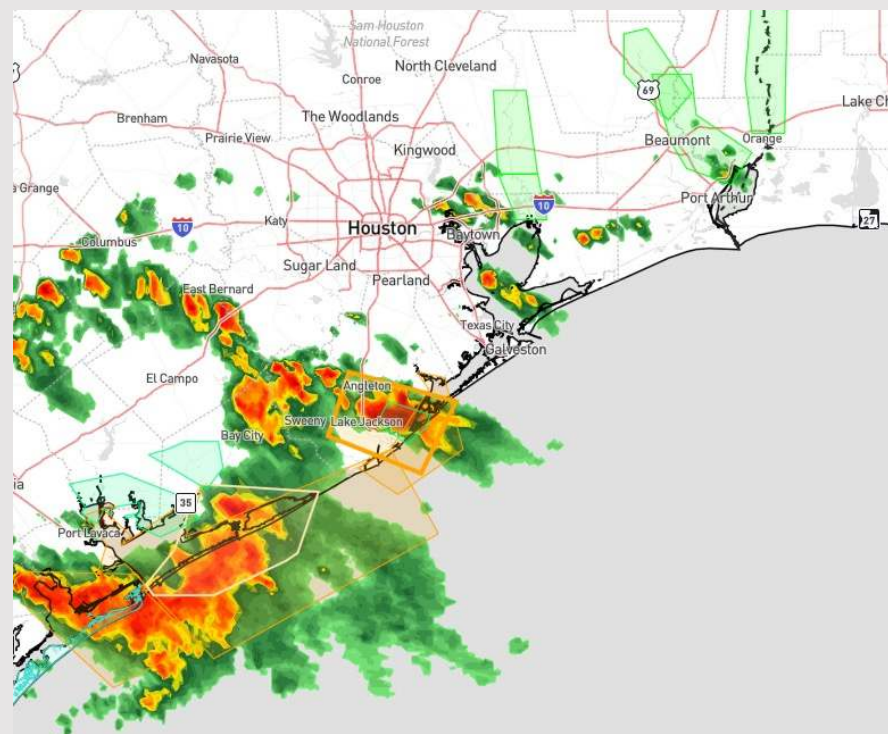


Updated: 11:30 AM CT  
Saturday, June 1, 2024

Forecaster: Jonathan Kipper

## Weather Headlines

- Not anticipating fog concerns however visibility may be reduced under heavy downpours.
- **Strong/severestorm potential this afternoon will keep wind gusts risks of 40+ kts in play.**
- **Wave heights for 11/12 and Boarding Station not favored to exceed 3.5 ft at any point this weekend. Next potential to see 4ft+ to be on 6/4.**



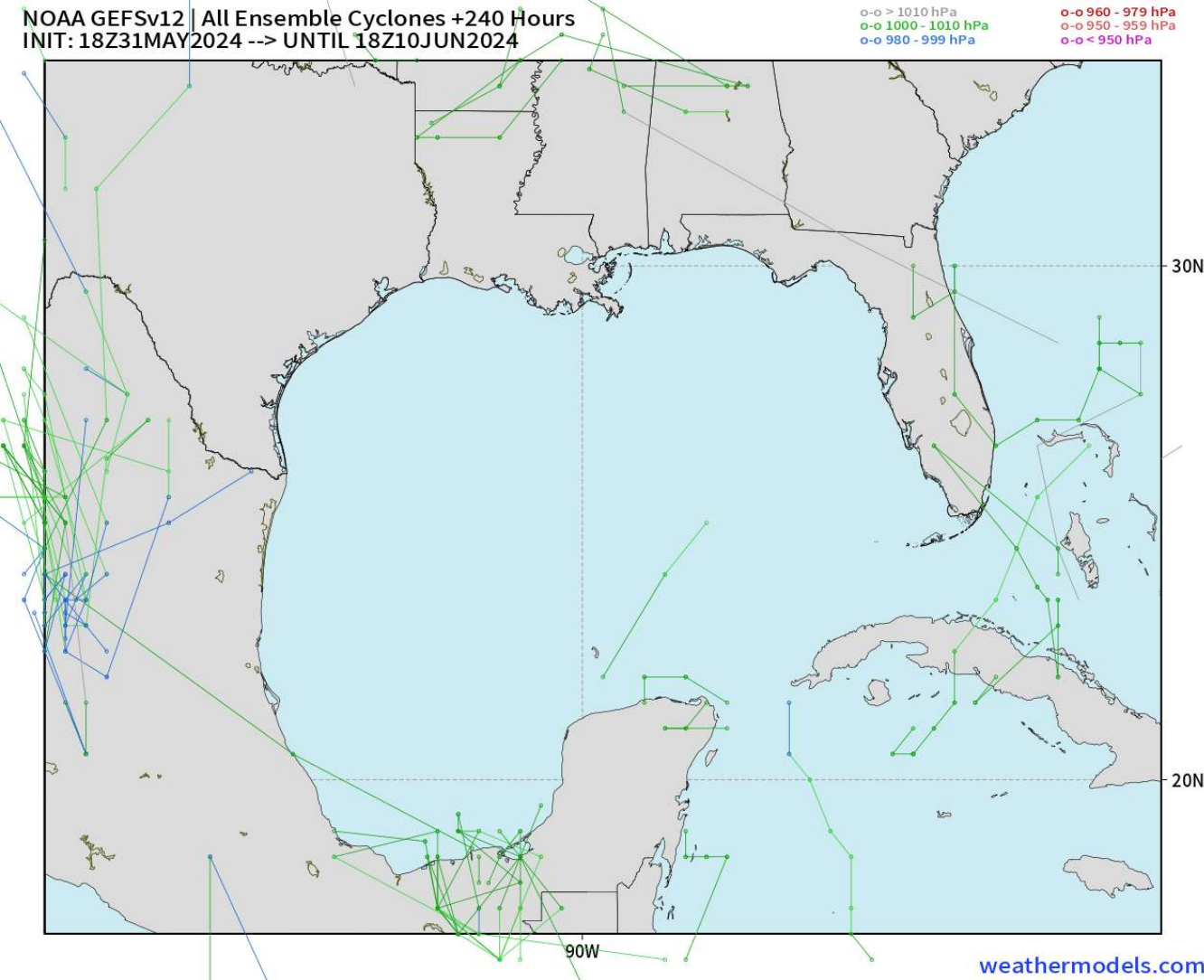
**Current Radar: 11:15 AM CT**



As always, please do not hesitate to reach out to us with any forecast questions via the chat option on Clarity or our on-call number, **(317)-560-8122** press 1 for forecast questions.

# Houston Pilots Tropical Update

## American Model Next 10 Days - Tropical Tracks



**Tropical Development in the Gulf of Mexico is not favored in the next 7-10 days.**

# Houston Pilots Visibility Chart (miles)



Time	Sat 12pm	Sat 1pm	Sat 2pm	Sat 3pm	Sat 4pm	Sat 5pm	Sat 6pm	Sat 7pm	Sat 8pm	Sat 9pm	Sat 10pm	Sat 11pm	Sun 12am	Sun 1am	Sun 2am	Sun 3am	Sun 4am	Sun 5am	Sun 6am	Sun 7am	Sun 8am	Sun 9am	Sun 10am	Sun 11am	
610 Bridge	10	10	10	10	10	10	10	10	10	10	10	10	10	10	10	10	10	10	10	10	7	7	10	10	10
Kinder 1	10	10	10	10	10	10	10	10	10	10	10	10	10	10	10	10	10	10	10	10	7	7	10	10	10
Greens Bayou	10	10	10	10	10	10	10	10	10	10	10	10	10	10	10	10	10	10	10	10	6	7	10	10	10
Shell Crude	10	10	10	10	10	10	10	10	10	10	10	10	10	10	10	10	10	10	10	10	6	6	10	10	10
Lynchburg Ferries	10	10	10	10	10	10	10	10	10	10	10	10	10	10	10	10	10	10	10	10	6	6	10	10	10
Exxon 3	10	10	10	10	10	10	10	10	10	10	10	10	10	10	10	10	10	10	10	10	6	6	10	10	10
Morgans Point	10	10	10	10	10	10	10	10	10	10	10	10	10	10	10	10	10	10	10	10	6	6	10	10	10
75/76	10	10	10	10	10	10	10	10	10	10	10	10	10	9	9	10	10	10	10	10	6	6	7	9	9
63/64	10	10	10	10	10	10	10	10	10	10	10	10	10	9	9	10	10	10	10	10	6	6	7	9	9
51/52	10	10	10	10	10	10	10	10	10	10	10	10	10	9	9	10	10	10	10	10	6	6	7	9	9
37/38	10	10	10	10	10	10	10	10	10	10	10	10	10	9	9	10	10	10	10	10	6	6	7	9	9
25/26	10	10	10	10	10	10	10	10	10	10	10	10	10	9	9	10	10	10	10	10	6	6	6	9	9
11/12	10	10	10	10	10	10	10	10	10	10	10	10	10	9	9	10	10	10	10	10	6	6	6	9	9
1 & 2 Bravo	10	10	9	7	10	9	9	9	9	10	10	9	6	6	6	6	7	7	7	7	5	4	5	9	9

**NOTE: This is automated data that may/may not agree with the official BAM thinking that's found on the daily slides or special visibility report slides. This data should be used as a guide only**



# Houston Pilots Wind Chart



## Forecast Confidence



Sustained wind 13 Knots  
Gusts 18 Knots  
Wind from the N

## Example

WS: 13  
G:18  
N

Time Knots	Sat 12pm	Sat 1pm	Sat 2pm	Sat 3pm	Sat 4pm	Sat 5pm	Sat 6pm	Sat 7pm	Sat 8pm	Sat 9pm	Sat 10pm	Sat 11pm	Sun 12am	Sun 1am	Sun 2am	Sun 3am	Sun 4am	Sun 5am	Sun 6am	Sun 7am	Sun 8am	Sun 9am	Sun 10am	Sun 11am	
610 Bridge	5	5	5	6	6	7	6	6	5	5	5	4	4	4	4	4	4	4	4	4	5	5	6	7	
	10	11	11	11	12	12	12	11	10	10	9	9	9	9	9	9	8	9	9	9	10	11	12	14	
	SE	SE	S	SSE	SSE	SSE	SSE	SE	ESE	ESE	E	ESE	ESE	ESE	ESE	ESE	ESE	SE	SE	SSE	SE	SSE	SSE	SSE	
Kinder 1	5	5	6	6	7	7	6	6	5	5	5	4	4	4	4	4	4	4	4	4	5	5	6	7	
	10	11	11	12	12	12	12	11	10	9	9	9	9	9	9	9	9	9	9	9	10	11	12	14	
	SSE	SE	SSE	SE	SSE	SSE	SSE	SE	ESE	ESE	E	ESE	ESE	ESE	ESE	ESE	ESE	SE	SE	SSE	SE	SSE	SSE	SSE	
Greens Bayou	5	5	5	6	6	6	6	5	5	5	4	4	4	4	4	4	4	4	4	4	5	5	6	7	
	10	11	11	11	12	12	11	11	10	9	9	9	9	9	8	8	9	9	9	9	10	11	12	14	
	SSE	SSE	SSE	SE	S	SSE	SSE	SE	ESE	ESE	E	ESE	ESE	ESE	ESE	ESE	SE	SE	SE	SE	SE	SSE	SSE	SSE	
Shell Crude	5	5	6	6	6	6	6	5	5	5	4	4	4	4	4	4	4	4	4	4	5	5	6	7	
	10	11	11	11	12	12	12	11	10	9	9	9	9	9	9	9	9	9	9	10	10	11	12	14	
	SSE	SE	SSE	SSE	S	SSE	SSE	SE	ESE	ESE	E	ESE	ESE	ESE	ESE	ESE	SE	SE	SE	SE	SSE	SE	SSE	SSE	
Lynchburg Ferries	5	5	5	6	7	6	6	5	5	5	4	4	4	4	3	3	4	4	4	4	5	5	6	7	
	10	11	11	12	12	12	12	11	9	9	9	8	8	8	8	8	9	9	9	9	10	11	12	14	
	SSE	SE	SE	S	S	SSE	SSE	SE	ESE	ESE	E	ESE	ESE	ESE	ESE	ESE	SE	SE	SE	SE	SSE	SE	SSE	SSE	
Exxon 3	6	7	7	7	8	8	8	8	7	7	7	7	7	7	7	7	7	7	7	7	7	7	8	8	9
	10	12	12	12	13	13	13	12	11	11	11	11	11	11	11	11	11	11	11	11	12	13	13	15	
	SE	SE	SE	SSE	S	SSE	SSE	SE	ESE	ESE	E	ESE	SE	ESE	SE	SE	SSE	SSE	SSE	SSE	SSE	SSE	SSE	SSE	
Morgans Point	6	7	7	7	8	8	8	8	7	7	7	7	7	7	7	7	7	7	7	7	7	7	8	9	9
	11	12	12	13	13	13	13	12	11	11	11	11	11	11	11	11	11	12	12	12	12	13	13	15	
	SE	SE	SE	S	S	SSE	SSE	SE	ESE	ESE	ESE	ESE	ESE	ESE	SE	SE	SE	SSE	SSE	SSE	SSE	SSE	SSE	SSE	
75/76	6	7	7	7	8	8	9	9	8	8	8	8	8	8	9	9	9	9	9	9	9	9	9	9	
	11	13	13	13	14	13	13	13	12	12	12	12	12	13	13	13	13	13	13	13	13	14	15	15	
	SE	SE	SE	S	S	S	SSE	SE	ESE	SE	ESE	ESE	SE	SE	SE	SE	SSE	SSE	SSE	SSE	SSE	SSE	SSE	SSE	
63/64	7	7	7	7	7	8	8	8	8	8	8	8	8	9	9	9	9	9	9	9	9	9	9	10	
	11	12	12	12	13	13	13	13	12	12	12	12	13	13	13	13	13	13	13	13	14	14	15	15	
	SE	SE	SE	SSE	S	S	SE	SE	SE	SE	ESE	ESE	SE	SE	SE	SE	SSE	SSE	SSE	SSE	SSE	SSE	SSE	SSE	
51/52	7	7	7	7	7	7	8	8	8	8	8	8	9	9	9	9	9	9	9	9	9	9	10	10	
	11	12	12	12	13	13	12	12	12	12	13	13	13	13	14	14	14	14	13	13	14	14	15	15	
	SE	SSE	SSE	SSE	S	S	SSE	SE	SE	ESE	SE	ESE	SE	SE	SE	SSE	SSE	SSE	SSE	SSE	SSE	SSE	SSE	SSE	
37/38	7	7	7	7	7	7	8	8	8	8	9	9	9	9	9	9	9	9	9	9	9	9	10	10	
	11	12	11	12	12	13	12	12	12	12	13	13	13	14	14	14	14	13	13	14	14	15	15	15	
	SE	SSE	SSE	SSE	S	S	SSE	SE	SE	SE	SE	ESE	SE	SE	SE	SSE	SSE	SSE	SSE	SSE	SSE	SSE	SSE	SSE	
25/26	7	7	7	7	7	7	8	8	8	8	8	9	9	9	9	9	9	9	9	9	9	9	10	10	
	11	12	11	11	12	12	12	12	12	12	13	13	13	14	14	14	14	13	13	14	14	15	15	15	
	SSE	SSE	SSE	SSE	S	S	SSE	SE	SE	SE	SE	ESE	SE	SE	SE	SSE	SSE	SSE	SSE	SSE	SSE	SSE	SSE	SSE	
11/12	7	7	7	7	7	7	7	7	7	7	7	8	8	8	8	9	9	9	9	9	9	9	9	9	
	11	11	11	11	11	12	12	12	11	12	12	13	13	13	13	14	14	13	13	14	14	14	15	15	
	SSE	SSE	SSE	SSE	S	S	SSE	SE	SE	SE	SE	SE	SE	SE	SE	SSE	SSE	SSE	SSE	SSE	SSE	SSE	SSE	SSE	
1 & 2 Bravo	7	7	7	7	7	7	7	8	8	9	9	9	9	10	10	10	10	10	10	10	10	10	10	10	
	10	11	10	11	11	12	12	12	12	13	14	14	14	15	15	15	15	14	14	15	15	15	15	15	
	SSE	SSE	SSE	SSE	S	S	SSE	SE	SE	SE	SE	SE	SE	SE	SE	SE	SSE	SSE	SSE	SSE	SSE	SSE	SSE	SSE	

**NOTE: This is automated data that may/may not agree with the official BAM thinking that's found on the daily slides. This data should be used as a guide only.**

# Houston Pilots: Sat. 6/1/2024



## Forecast Discussion

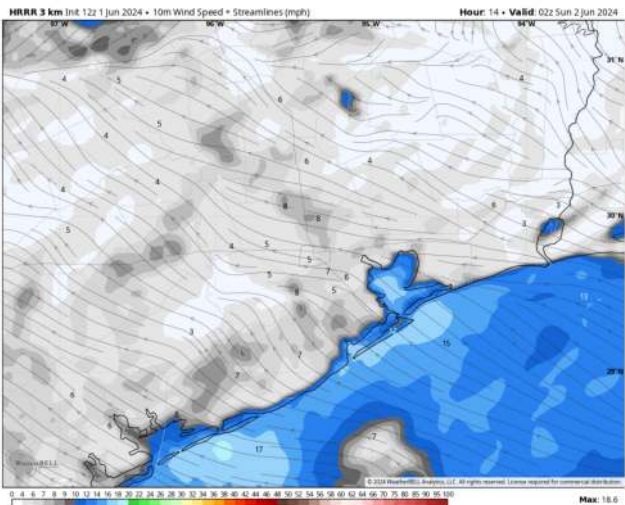
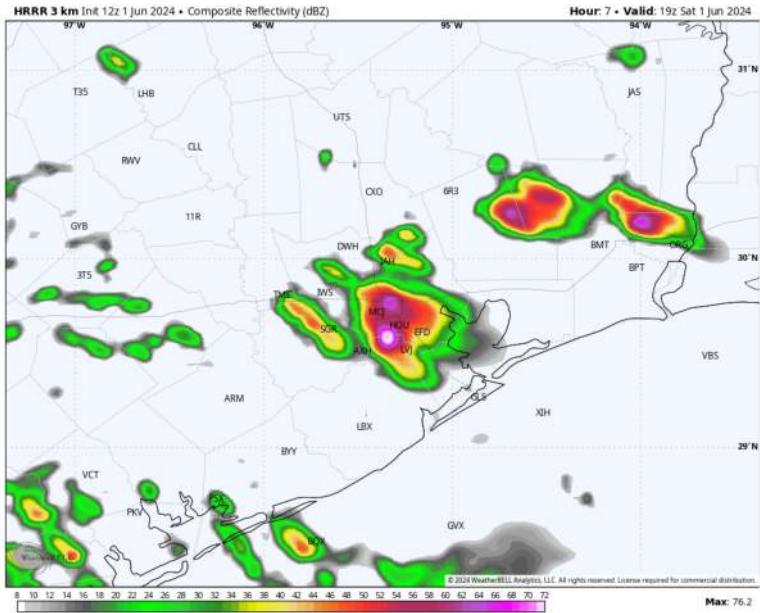
**Precip:** Isolated shoers/storms to continue through 1PM. 1PM-5PM remains favored time frame for scattered to widespread strong/severe thunderstorms. Favoring dry conditions after 6 PM. **Thunderstorm wind gusts of 40-50 kts, local downpours and hail possible!**

**Wind:** Winds out of the S/SE throughout the day. **N of Morgan's Point:** Winds at 4-9 kts throughout the day. **S of Morgan's Point:** Winds at 10 - 15 kts throughout the rest of the day. **Non-Thunderstorm wind gusts of 20-25 kts will be possible for stations S of Morgan's point after 1PM.**

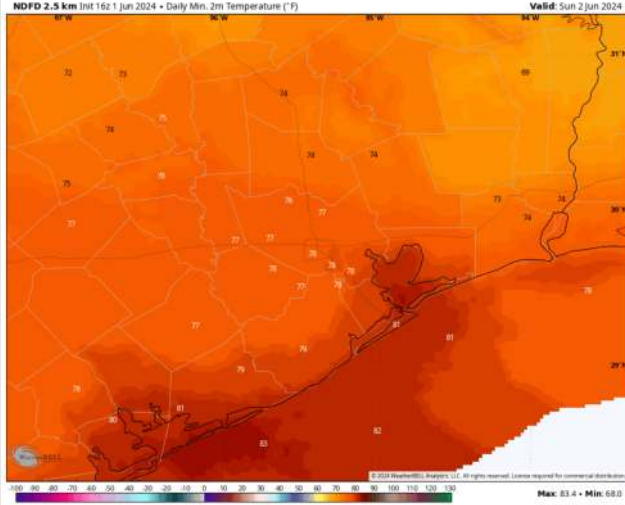
**Low Temps:** **N of Morgan's Point:** Upper 70s F. **S of Morgan's Point:** Low 80s F.

**Visibility:** Not anticipating any fog risk for today.

## Precip Image: 3 PM CT



Wind Speed  
8 PM CT



Low Temps  
SUN AM



# Houston Pilots: sun. 6/2/2024



## Forecast Discussion

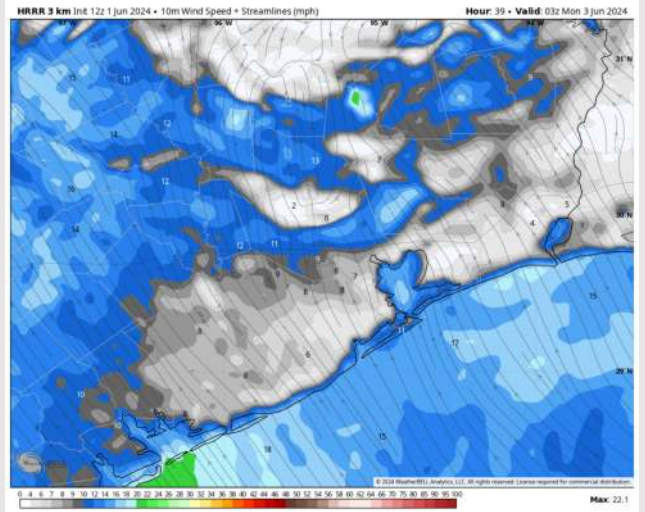
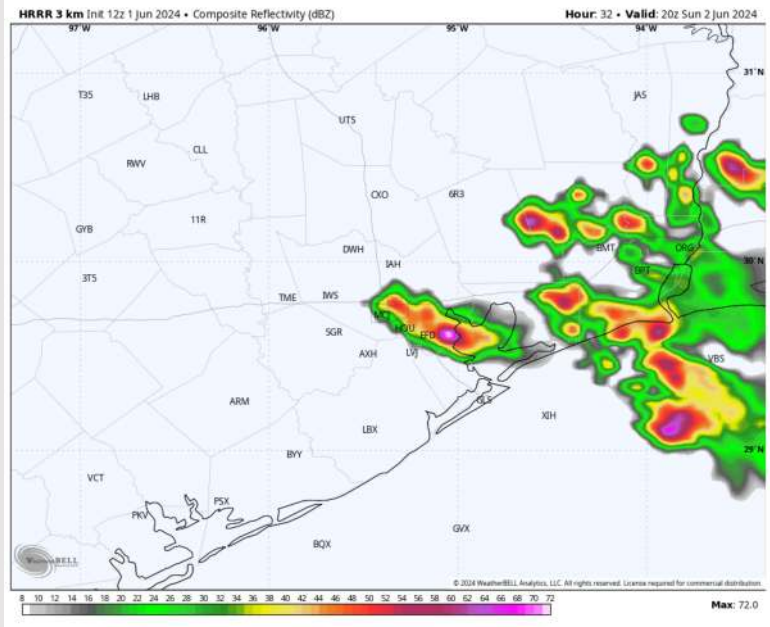
**Precip:** Lower confidence in exact timing, but thunderstorm risks expected to be elevated between 12PM – 6PM. **Thunderstorm wind gusts of 30-40kts, local downpours and hail possible!**

**Wind:** Winds out of the S/SE throughout the day. **N of Morgan's Point:** Winds of 4 – 9 kts through 4PM, before increasing to 9-14 kts for the remainder of the day. **S of Morgan's Point:** Winds at 11 – 16 kts through 1PM before winds increase to 14-19 kts throughout the rest of the day.

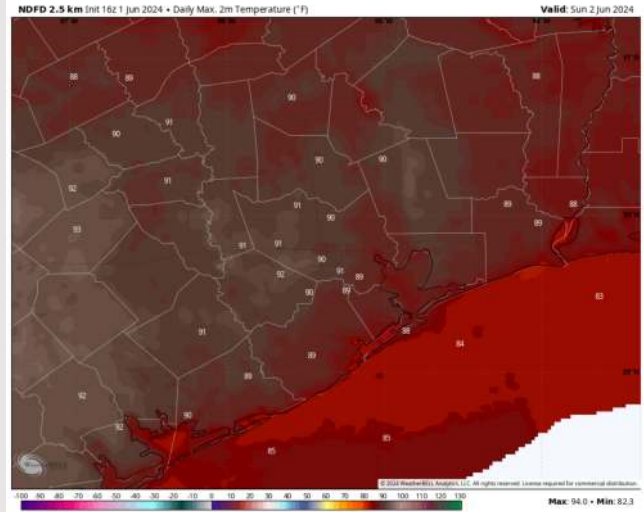
**High Temps:** **N of Morgan's Point:** Low 90s F. **S of Morgan's Point:** Low 80s F.

**Visibility:** Not anticipating any fog for Sunday.

## Precip Image: 3 PM CT



Wind Speed:  
10 PM CT



High Temps  
Sunday

## Forecast Discussion

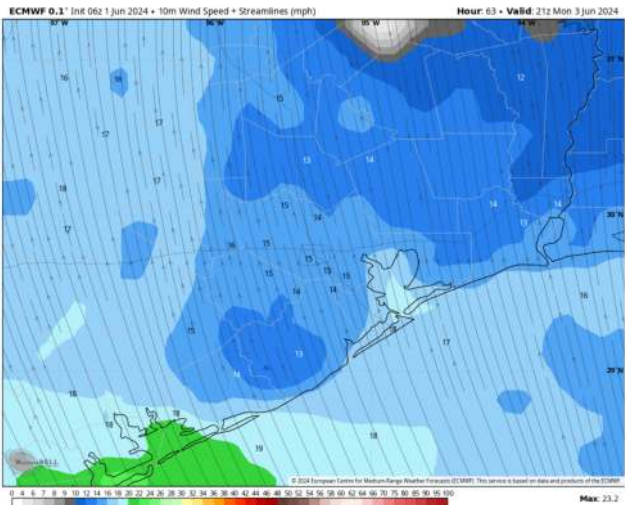
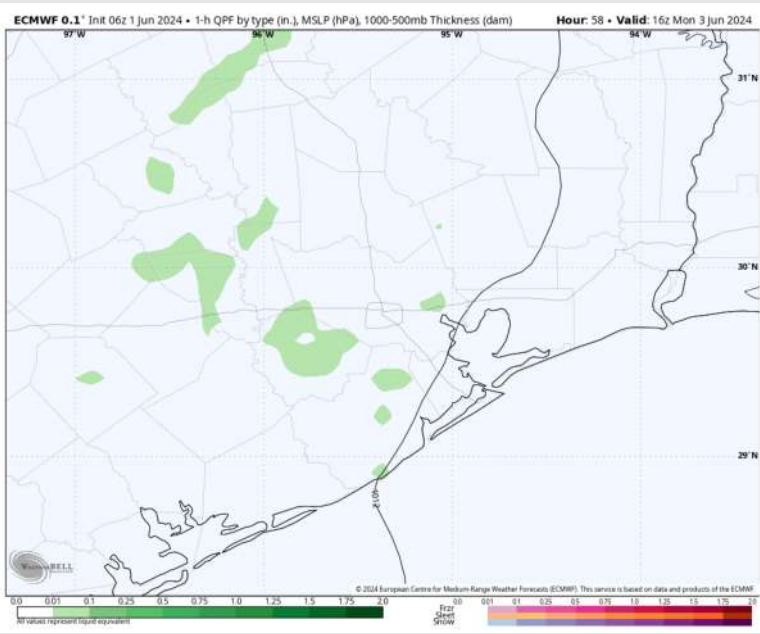
**Precip:** Favoring mostly dry conditions outside localized light shower in the late morning/early afternoon.

**Wind:** Winds will be out of SE for the entire day. **N of Morgan's Point:** Winds at 7-12 kts through 12 PM then increase to 10-15 kts for the PM. **S of Morgan's Point:** Winds increase to 18-23 kts just after midnight and remain there throughout Monday. **Wind gusts of 22-27 kts possible after 10 AM for all stations**

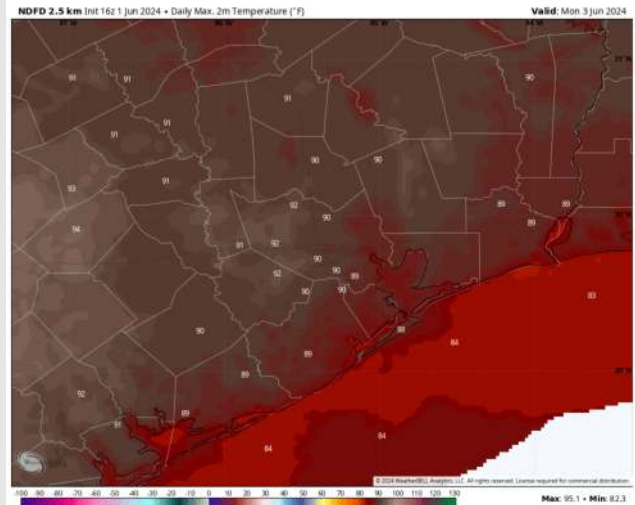
**High Temps:** **N of Morgan's Point:** Lower 90s F **S of Morgan's Point:** Low/Mid 80s F.

**Visibility:** Not anticipating any visibility concerns for Monday.

## Precip Image: 11 AM CT



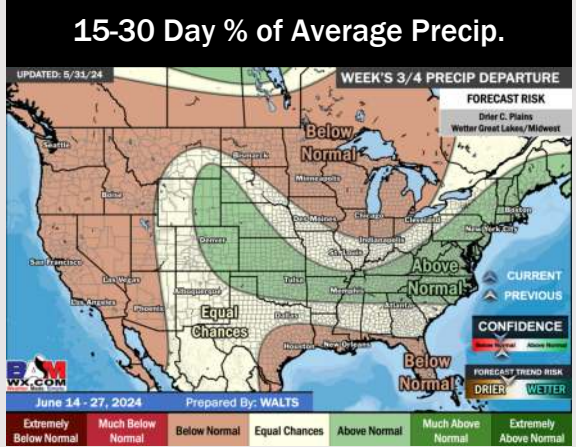
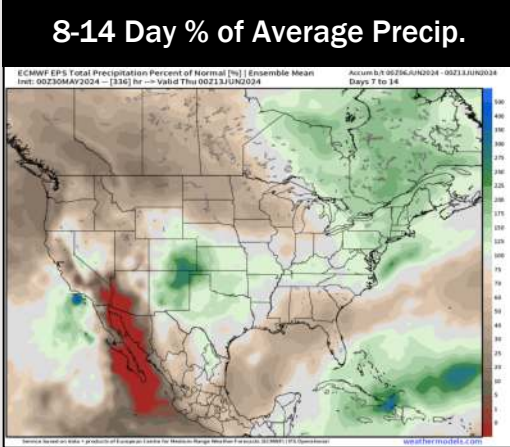
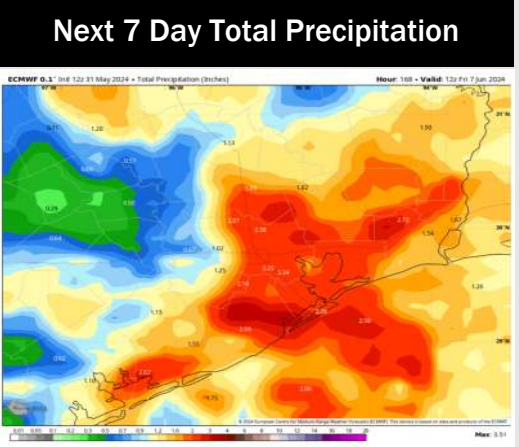
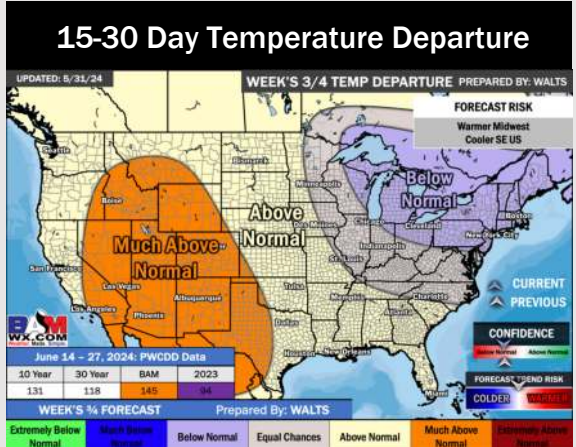
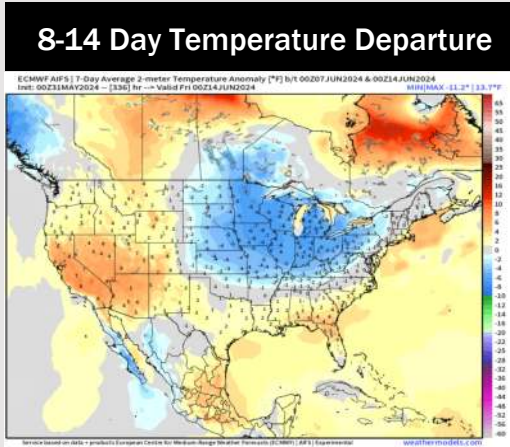
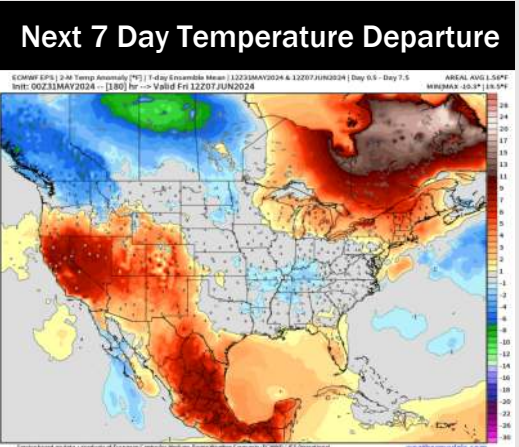
Wind Speed:  
4 PM CT



High Temps  
Monday



# Houston Pilots: 6/1/24



- Temps are expected to be near normal for the week 1 timeframe. Storm chances to continue through the weekend.
- Near normal precipitation chances are at play during the week 2 timeframe. Temps are expected to be near to above normal.
- Below normal chances for precipitation are favored in the weeks 3/4 timeframe. Temperatures expected to be above normal for the weeks 3 and 4 timeframe.