

# Houston Pilots Forecast Package

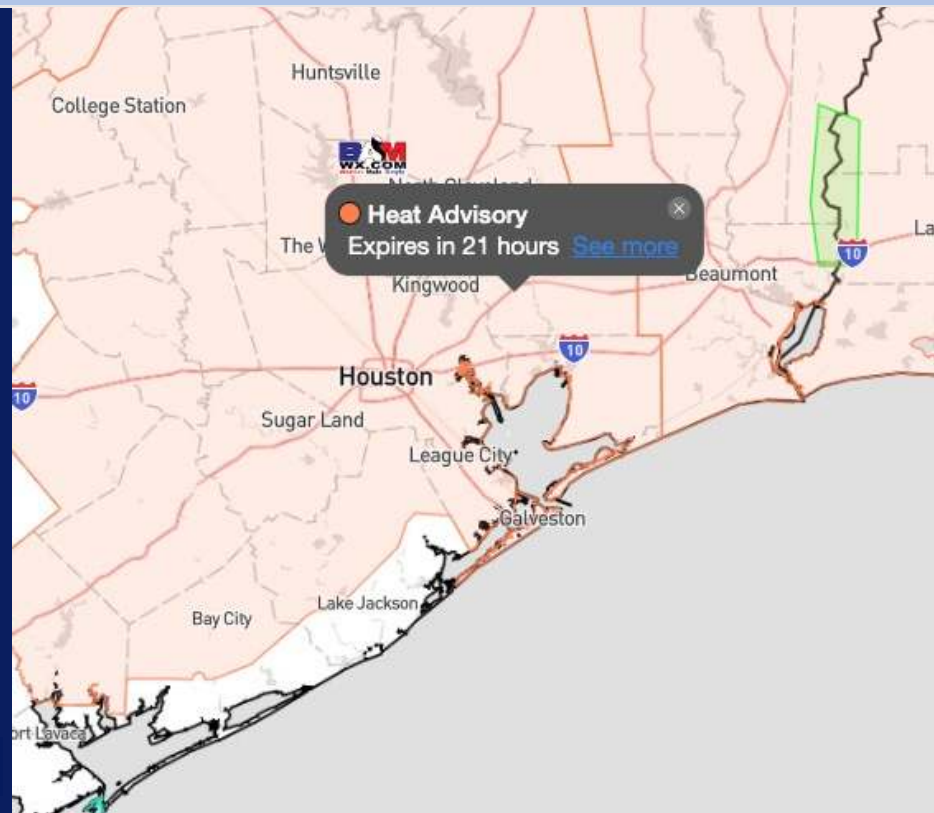


Updated: 10:45 PM CT  
Sunday, June 30, 2024

Forecaster: Jonathan Kipper

## Weather Headlines

- Scattered rainfall chances will continue throughout the early parts of the week. Favoring more dry time than not!
- Winds are expected to be relatively calm through the beginning of the week, not expected to exceed 14 kts.
- **Monitoring Hurricane Beryl developing E of Lesser Antilles. See graphics below for latest thinking!**



Current Radar: 10:30 PM CT



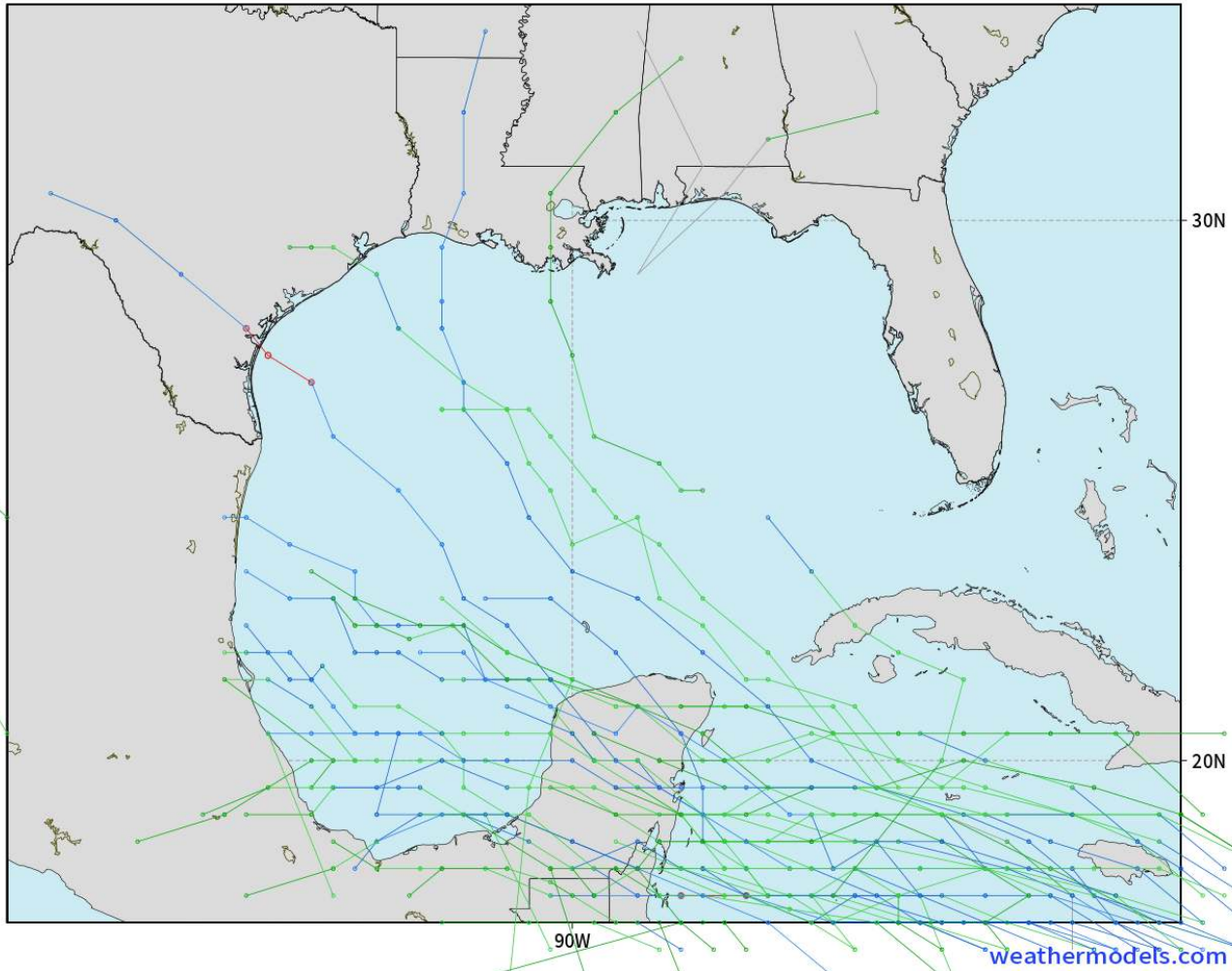
As always, please do not hesitate to reach out to us with any forecast questions via the chat option on Clarity or our on-call number, **(317)-560-8122** press **1** for forecast questions.

# Houston Pilots Tropical Update

## American Model Next 10 Days - Tropical Tracks

NOAA GFSv12 | All Ensemble Cyclones +240 Hours  
INIT: 18Z30JUN2024 --> UNTIL 18Z10JUL2024

o-o > 1010 hPa  
o-o 1000 - 1010 hPa  
o-o 980 - 999 hPa  
o-o 960 - 979 hPa  
o-o 950 - 959 hPa  
o-o < 950 hPa



Major Hurricane Beryl has developed E of the Lesser Antilles. (See Next Slide for More Info). Timing for Gulf of Mexico impacts will be July 7 – 9 **IF** Beryl can push into area.

Tropical Storm Chris will continue to work West into the coast of Mexico throughout Monday. **NO IMPACTS** are favored for Houston.



# Hurricane Beryl Outlook

SUN June 30th, 2024 – FRI July 5th

FORECASTER: Kipper

UPDATED: 6/30/24 11:00 PM ET



Conditions become far less favorable. Weakening favored

## Intensification Discussion:

- Beryl continues as major hurricane as of SUN Night, maintaining Category 4 strength.
- Beryl is expected to maintain its category 4 intensity as it approaches the Windward Islands, making landfall MON AM.
- Weakening is expected to take place as Beryl approaches Jamaica WED AM, with risk of continuing to weaken into a Tropical Storm by the time it reaches the Yucatan FRI.

Area to watch for major hurricane (Category 3-4)

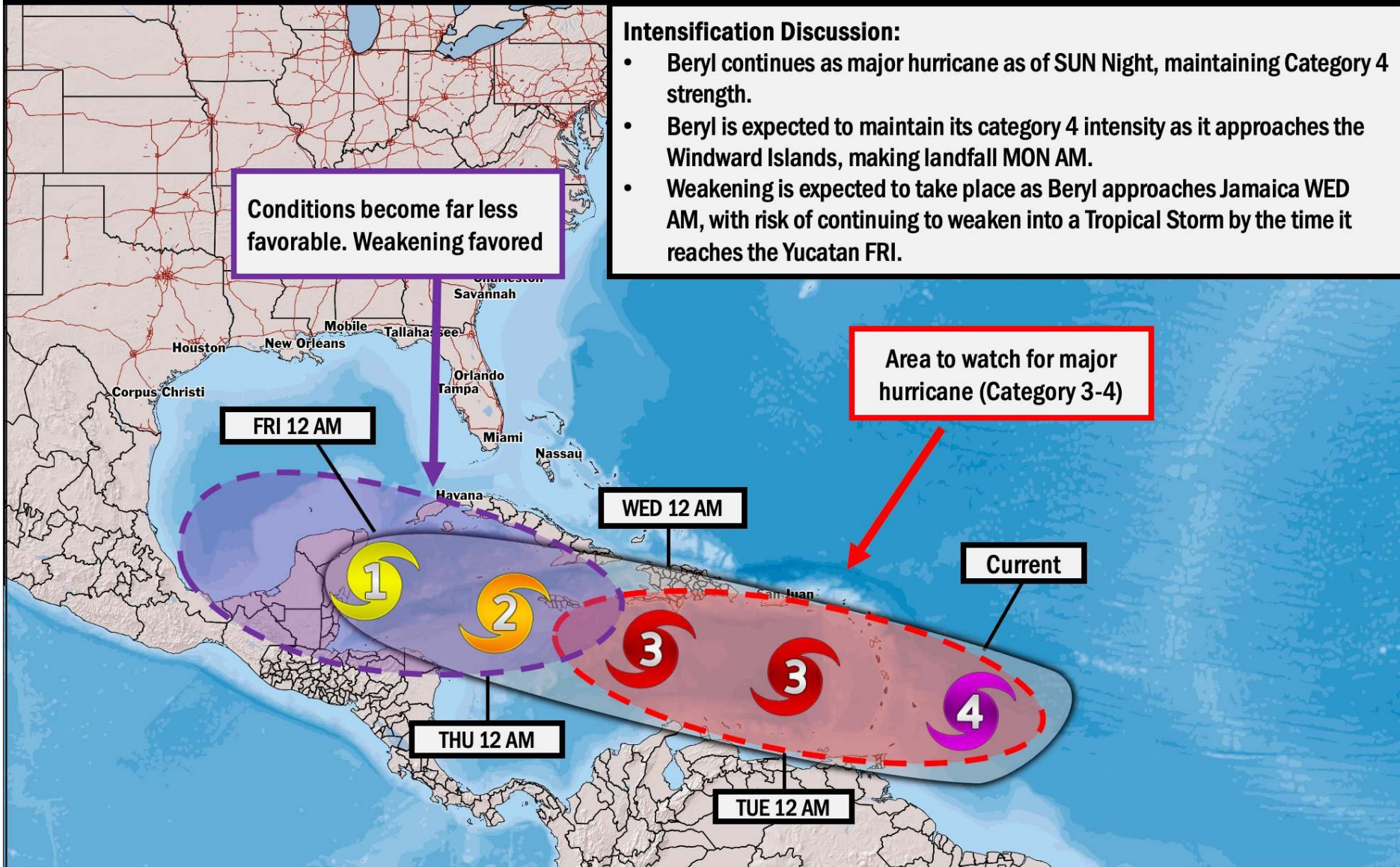
FRI 12 AM

WED 12 AM

Current

THU 12 AM

TUE 12 AM



# Houston Pilots Visibility Chart (miles)



## Forecast Confidence



Time	Sun 11pm	Mon 12am	Mon 1am	Mon 2am	Mon 3am	Mon 4am	Mon 5am	Mon 6am	Mon 7am	Mon 8am	Mon 9am	Mon 10am	Mon 11am	Mon 12pm	Mon 1pm	Mon 2pm	Mon 3pm	Mon 4pm	Mon 5pm	Mon 6pm	Mon 7pm	Mon 8pm	Mon 9pm	Mon 10pm
610 Bridge	10	10	10	10	10	10	9	9	6	10	10	10	10	10	10	10	10	10	10	10	10	10	10	10
Kinder 1	10	10	10	10	10	10	9	9	6	10	10	10	10	10	10	10	10	10	10	10	10	10	10	10
Greens Bayou	10	10	10	10	10	10	9	10	6	10	10	10	10	10	10	10	10	10	10	10	10	10	10	10
Shell Crude	10	10	10	10	10	10	10	10	6	10	10	10	10	10	10	10	10	10	10	10	10	10	10	10
Lynchburg Ferries	10	10	10	10	10	10	9	10	6	10	10	10	10	10	10	10	10	10	10	10	10	10	10	10
Exxon 3	10	10	10	10	10	10	10	10	6	10	10	10	10	10	10	10	10	10	10	10	10	10	10	10
Morgans Point	10	10	10	10	10	10	10	10	6	10	10	10	10	10	10	10	10	10	10	10	10	10	10	10
75/76	10	10	10	10	10	10	10	9	6	10	10	10	10	10	10	10	10	10	10	10	10	10	10	10
63/64	10	10	10	10	10	10	10	9	6	10	10	10	10	10	10	10	10	10	10	10	10	10	10	10
51/52	10	10	10	10	10	10	10	9	6	10	10	10	10	10	10	10	10	10	10	10	10	10	10	10
37/38	10	10	10	10	10	10	10	9	6	10	10	10	10	10	10	10	10	10	10	10	10	10	10	10
25/26	10	10	10	10	10	10	10	10	6	10	10	10	10	10	10	10	10	10	10	10	10	10	10	10
11/12	10	10	10	10	10	10	10	10	6	10	10	10	10	10	10	10	10	10	10	10	10	10	10	10
1 & 2 Bravo	10	10	10	10	9	8	8	9	6	10	10	10	10	10	10	10	9	6	6	6	6	6	6	10

**NOTE: This is automated data that may/may not agree with the official BAM thinking that's found on the daily slides or special visibility report slides. This data should be used as a guide only**



# Houston Pilots Wind Chart



## Forecast Confidence



Sustained wind 13 Knots  
Gusts 18 Knots  
Wind from the N

## Example

WS: 13  
G:18  
N

Time Knots	Sun 11pm	Mon 12am	Mon 1am	Mon 2am	Mon 3am	Mon 4am	Mon 5am	Mon 6am	Mon 7am	Mon 8am	Mon 9am	Mon 10am	Mon 11am	Mon 12pm	Mon 1pm	Mon 2pm	Mon 3pm	Mon 4pm	Mon 5pm	Mon 6pm	Mon 7pm	Mon 8pm	Mon 9pm	Mon 10pm
610 Bridge	3	3	3	3	2	2	2	2	2	2	3	3	3	3	2	2	3	4	4	4	5	4	4	3
	7	7	6	6	5	5	5	5	5	5	5	6	6	6	6	7	6	7	8	8	8	9	8	8
	S	S	SSW	SSW	SW	WSW	WSW	W	WNW	WNW	WNW	WNW	NW	NNW	N	NE	ENE	N	ESE	SE	E	SSE	S	S
Kinder 1	3	3	3	2	2	2	2	2	2	2	3	3	3	2	3	3	3	4	4	4	5	4	4	3
	7	7	6	6	5	5	5	5	5	5	5	6	6	6	6	7	6	7	8	8	8	7	8	8
	S	S	SSW	SSW	WSW	WSW	WSW	W	WNW	WNW	WNW	WNW	NW	NNW	N	NNE	ENE	ENE	SE	SE	SE	S	S	S
Greens Bayou	3	3	3	2	2	2	2	2	2	2	2	3	3	3	3	3	4	4	4	4	4	3	3	3
	7	6	6	5	5	5	5	5	5	5	5	6	6	6	6	7	7	7	8	8	8	7	8	7
	S	SSW	SSW	SW	WSW	WSW	W	W	WNW	WNW	WNW	WNW	NW	NNW	N	ENE	ENE	E	SE	ESE	ESE	SSE	S	S
Shell Crude	3	3	3	2	2	2	2	2	2	2	2	3	3	3	3	3	4	4	4	4	4	3	3	3
	7	6	6	5	5	5	5	5	5	5	5	6	6	6	6	6	6	7	8	8	8	7	8	7
	S	SSW	SSW	SW	WSW	WSW	W	W	WNW	WNW	WNW	WNW	NW	NNW	N	NE	ENE	E	SE	ESE	SE	SSE	S	S
Lynchburg Ferries	3	3	2	2	2	2	2	2	2	2	2	3	3	2	2	3	3	4	4	4	3	3	3	3
	7	6	6	5	5	5	5	5	5	5	6	6	7	6	6	7	6	7	8	8	8	6	7	7
	S	SSW	SSW	SW	WSW	WSW	W	W	WNW	WNW	WNW	WNW	NW	NNW	N	NNE	NNE	E	ESE	ESE	SE	SSE	S	S
Exxon 3	6	5	5	4	4	4	4	4	4	4	4	4	3	3	3	4	4	5	5	5	6	5	6	5
	9	8	8	7	7	7	7	6	7	7	7	7	7	7	7	8	8	9	9	9	9	8	8	8
	S	SSW	SSW	SW	WSW	WSW	W	W	WNW	WNW	WNW	NW	NW	NNW	N	NE	SE	ESE	SE	SE	SSE	S	S	SSW
Morgans Point	6	5	5	4	4	4	4	4	4	4	4	4	3	3	3	3	5	6	5	6	6	6	6	5
	9	8	8	7	7	7	7	6	7	7	7	7	7	6	7	8	8	9	10	9	9	8	8	8
	S	SSW	SSW	SW	WSW	WSW	W	WNW	WNW	WNW	WNW	NW	NW	NNW	N	ESE	SSE	SE	SSE	SE	SE	SSE	S	SSW
75/76	7	6	6	5	5	5	5	5	5	5	5	4	3	3	3	3	4	5	5	6	7	7	7	7
	10	9	9	8	8	8	7	7	8	8	8	7	7	7	7	8	8	9	10	9	10	9	9	9
	S	S	SSW	SSW	SW	WSW	W	W	WNW	WNW	WNW	WNW	NNW	NE	ESE	SE	SSE	SSE	SSE	SE	SE	S	SSW	SSW
63/64	7	6	6	5	5	5	5	5	5	5	5	4	3	3	3	3	4	4	5	5	6	6	6	6
	10	9	9	8	8	8	7	7	8	8	8	7	7	7	6	6	7	7	8	9	10	9	9	9
	S	S	SSW	SSW	SW	WSW	WSW	W	WNW	WNW	WNW	WNW	NW	NNE	E	SE	SSE	SSE	SSE	SE	SSE	S	SSW	SSW
51/52	7	6	6	5	5	5	5	5	5	5	5	4	3	3	3	3	4	4	5	5	6	6	6	6
	10	9	9	8	8	8	7	7	8	8	8	7	7	6	6	6	7	8	9	9	10	9	9	9
	S	S	S	SSW	SSW	SW	WSW	W	W	WNW	WNW	WNW	NW	NNW	N	NE	SE	SSE	SSE	S	SSE	S	SSW	SSW
37/38	7	7	6	5	5	5	5	5	5	5	5	4	3	3	3	3	4	5	5	5	6	6	6	6
	10	9	9	8	8	8	7	7	8	8	8	7	6	6	6	6	7	8	9	9	10	9	9	9
	S	S	S	SSW	SSW	WSW	WSW	W	WNW	WNW	WNW	NW	NNW	N	NE	ESE	SSE	S	S	S	S	SSW	SSW	SSW
25/26	7	6	6	5	5	5	5	5	5	5	5	4	3	3	3	3	4	5	5	6	6	6	6	6
	10	9	9	8	8	8	7	6	7	7	8	7	6	6	6	6	7	8	9	9	10	9	8	9
	S	S	S	SSW	SSW	SW	WSW	W	WNW	WNW	WNW	NW	NNW	N	NNE	E	S	S	S	S	S	SSW	SSW	SSW
11/12	6	5	5	4	4	4	4	4	4	4	4	4	3	3	3	3	4	5	5	6	6	5	5	5
	9	9	9	8	8	7	7	6	7	7	8	8	7	6	6	7	7	8	9	8	9	8	8	8
	S	S	S	S	SSW	SW	WSW	W	WNW	WNW	NW	NW	NW	NNW	N	SSE	S	S	S	S	S	SSW	SSW	SW
1 & 2 Bravo	7	7	7	6	5	5	5	5	5	5	5	5	4	3	3	3	4	5	5	5	6	6	6	6
	10	10	10	8	8	8	8	7	8	8	8	8	8	7	6	7	7	8	9	9	10	9	9	9
	S	S	S	S	SSW	SW	WSW	W	WNW	WNW	NW	NW	NW	NW	NW	SW	SSW	SSW	S	SSW	SW	SW	SW	SW

**NOTE: This is automated data that may/may not agree with the official BAM thinking that's found on the daily slides. This data should be used as a guide only.**

# Houston Pilots: Mon. 7/1/2024



## Forecast Discussion

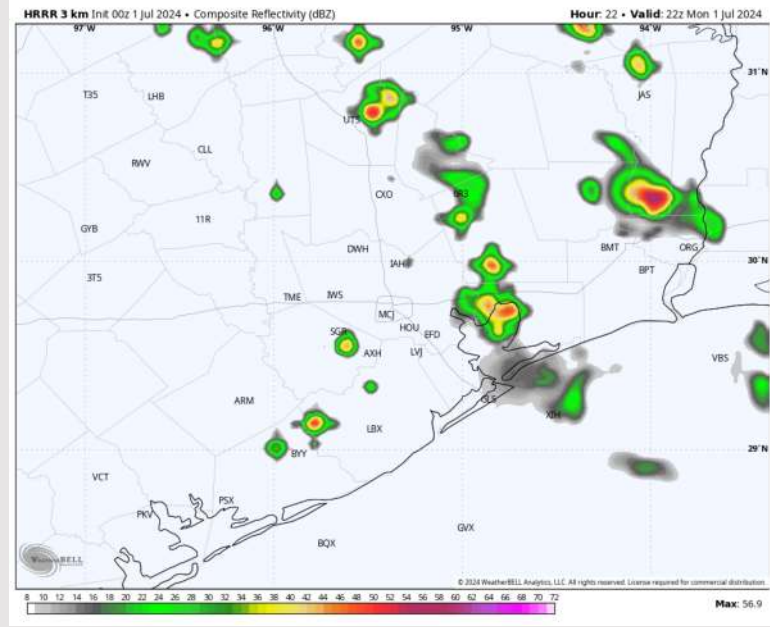
**Precip:** Dry conditions expected through 2 PM. After 2 PM, scattered showers/storms will move in from the NE and continue through ~9 PM. **A few wind gusts of 25-35 kts will be possible with strongest t-storms.**

**Wind:** Winds expected gradually work clockwise, settling out of the NW from 6 AM through 1 PM. After 1 PM, winds become variable, before setting to out of the S/SW by 8 PM. **N of Morgan's Point:** Winds at 2-7 kts for the entire day. **S of Morgan's Point:** Favoring winds 5-10 kts through 8 PM before slightly increasing to 9-14 kts the rest of MON.

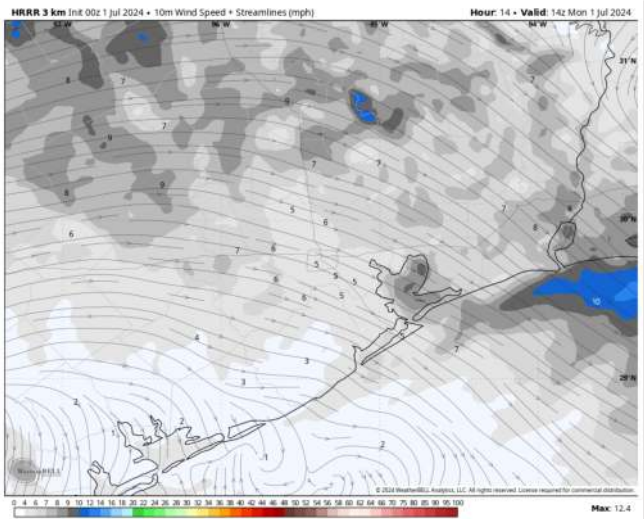
**High Temps:** **N of Morgan's Point:** Upper 90s F. **S of Morgan's Point:** Lower to mid 90s F

**Visibility:** Not favoring any fog concerns for today.

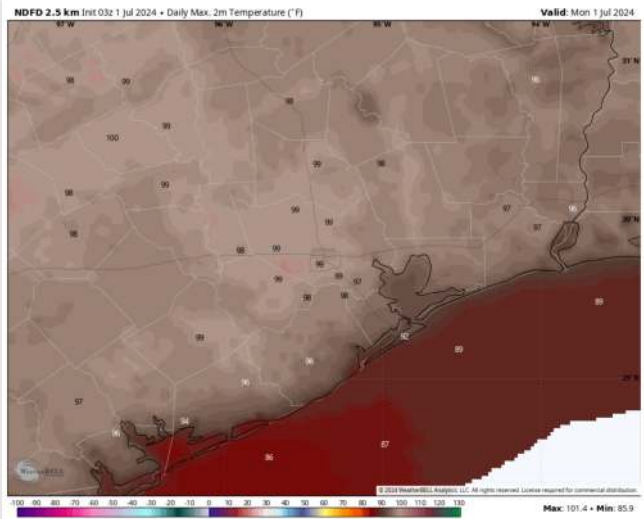
## Precip Image: 5 PM CT



Wind Speed  
9 AM CT



High Temps  
Today



# Houston Pilots: Tue. 7/2/2024



## Forecast Discussion

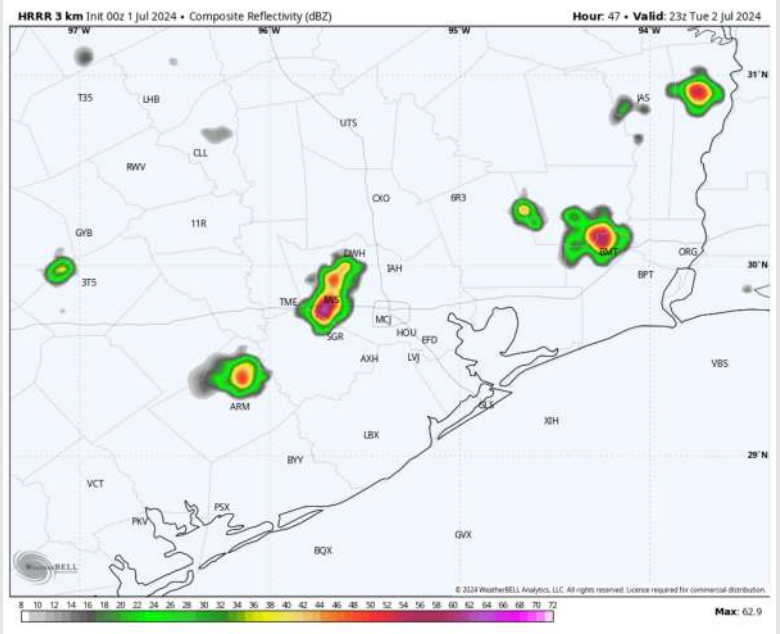
**Precip:** Isolated showers/thunderstorms (10%) will be possible from 4-7 PM, although majority of coverage will remain north of stations. Dry conditions favored after 7 PM.

**Wind:** Winds will begin TUE out of the SW before gradually working clockwise and settle out of the NW by 8 AM. Winds remain there through 2 Pm before shifting to be out of the SE the rest of TUE. **N of Morgan's Point:** Winds will be at 2-7 kts through 5 PM before slightly increasing to 5-10 kts. **S of Morgan's Point:** Winds at 6-11 kts through 4 PM before slightly increasing to 9-14 kts the rest of the day.

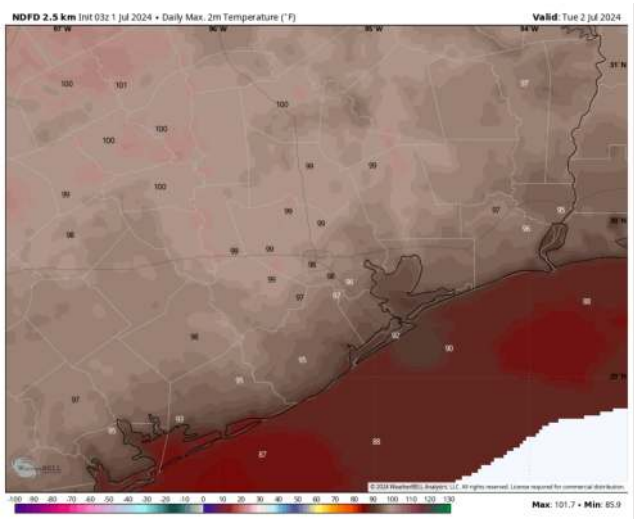
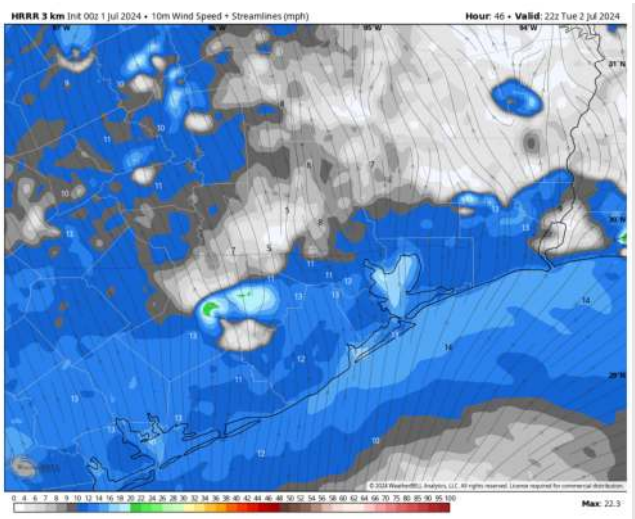
**High Temps:** **N of Morgan's Point:** Mid/Upper 90s F. **S of Morgan's Point:** Upper 80s to lower 90s F

**Visibility:** Not anticipating any fog concerns for TUE.

## Precip Image: 6 PM CT



Wind Speed:  
5 PM CT



High Temps  
Tuesday



# Houston Pilots: Wed. 7/3/2024



## Forecast Discussion

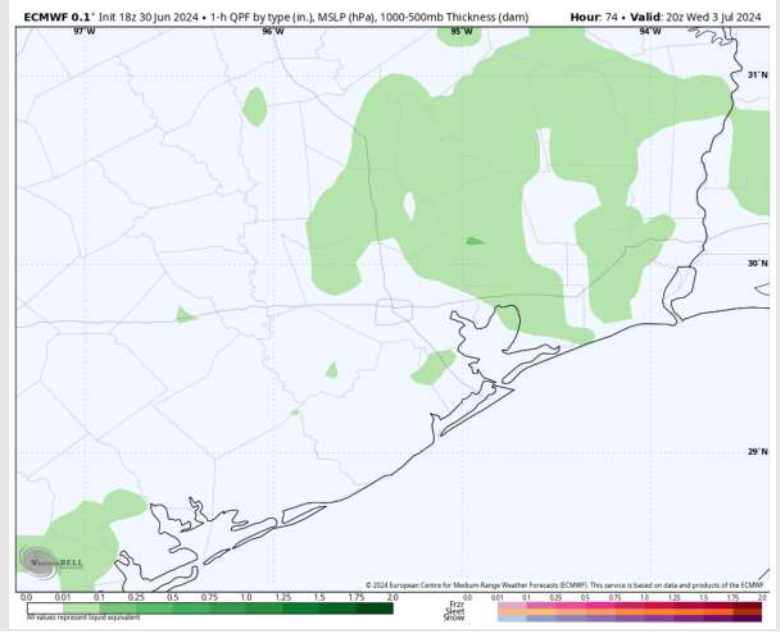
**Precip:** Dry conditions are favored through 10 AM WED. After 10 AM, scattered showers (20-30%) will be possible through 8 PM, although majority of coverage favored to be E of stations. Dry conditions after 8 PM.

**Wind:** Winds out of the S/SE throughout the day WED. **N of Morgan's Point:** Winds at 2-7 kts through 4 PM before increasing to 6-11 kts. **S of Morgan's Point:** Winds at 5-10 kts through 4 PM before increasing to 8-13 kts the rest of the day.

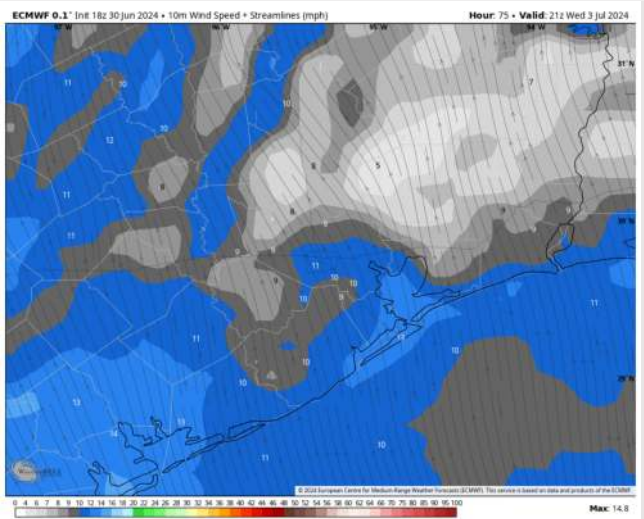
**High Temps:** **N of Morgan's Point:** Mid 90s F. **S of Morgan's Point:** Near 90 F.

**Visibility:** Not anticipating any fog concerns for WED.

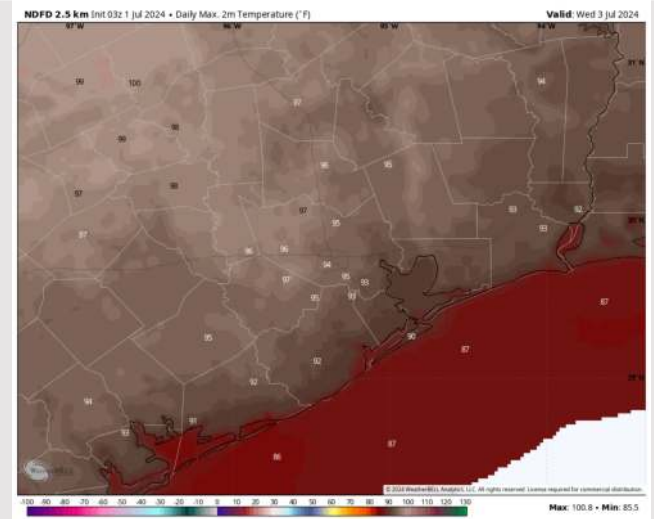
## Precip Image: 3 PM CT



Wind Speed:  
4 PM CT

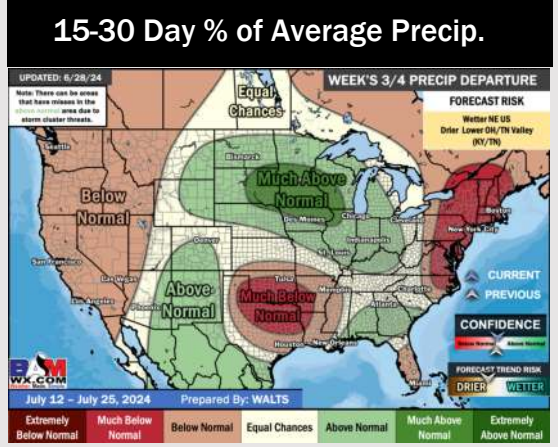
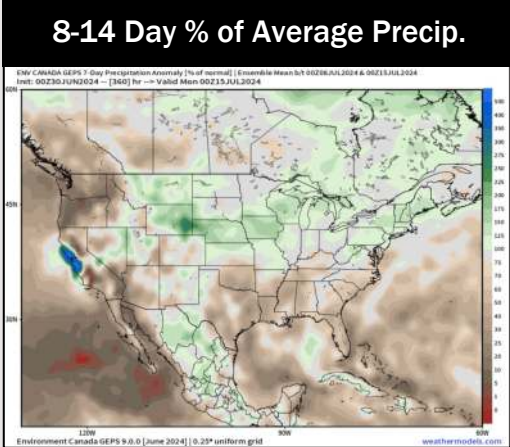
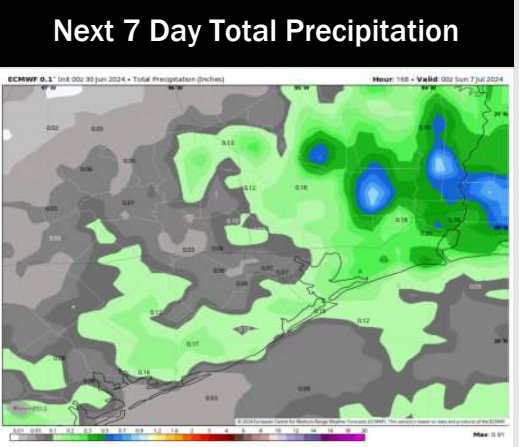
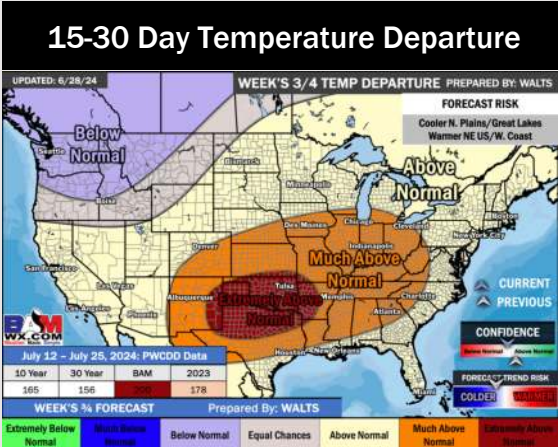
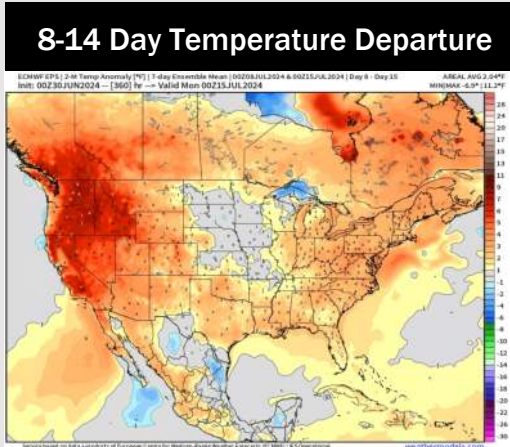
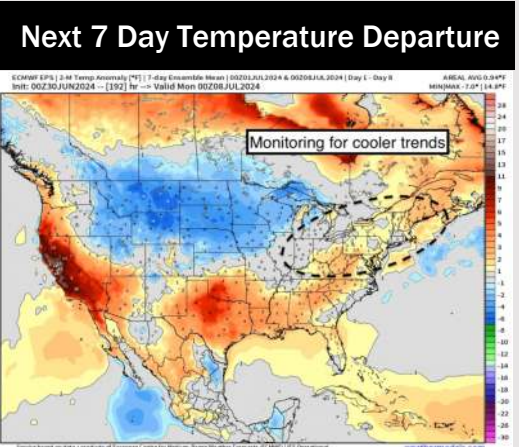


High Temps  
Wednesday





# Houston Pilots: 6/30/24



- Temps are expected to be above normal for the week 1 timeframe. Only scattered shower/storm risks are favored throughout the Week 1 period.
- Well below normal precipitation chances are at play during the week 2 timeframe, with the risk of tropical activity needing to be monitored. Temps are expected to remain above normal for week 2.
- Below normal chances for precipitation and above normal temperatures are favored in the weeks 3/4 timeframe.