

Forecast Update as of 10 AM CT 6/5/24

Confidence in timing: 4/5

- Graphic below depicts timing of stronger wind gusts associated with a line of storms.
- In behind this initial line, additional wind gusts near 35 - 45 MPH will be possible for another half hour or so as storms continue to press south.
- Areas of heavy rain and lightning will also be possible.

Houston Pilots Forecast Package



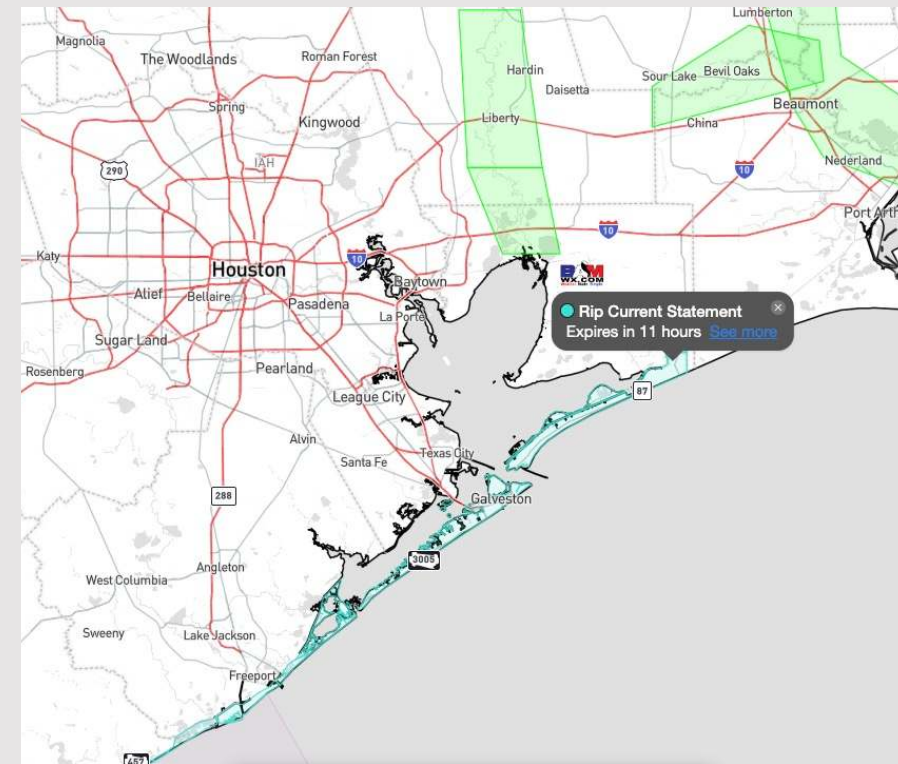
Updated: 11:00 PM CT

Wednesday, June 5, 2024

Forecaster: Jonathan Kipper

Weather Headlines

- Elevated winds are expected to continue through this evening before calming late evening and the rest of the week.
- Risk of strong to severe storms this afternoon. **Wind gusts of 40+ kts will be possible**
- **Elevated wave heights of 4-5 ft will be possible towards the Boarding Station through this morning. More details below.**



Current Radar: 10:55 PM CT



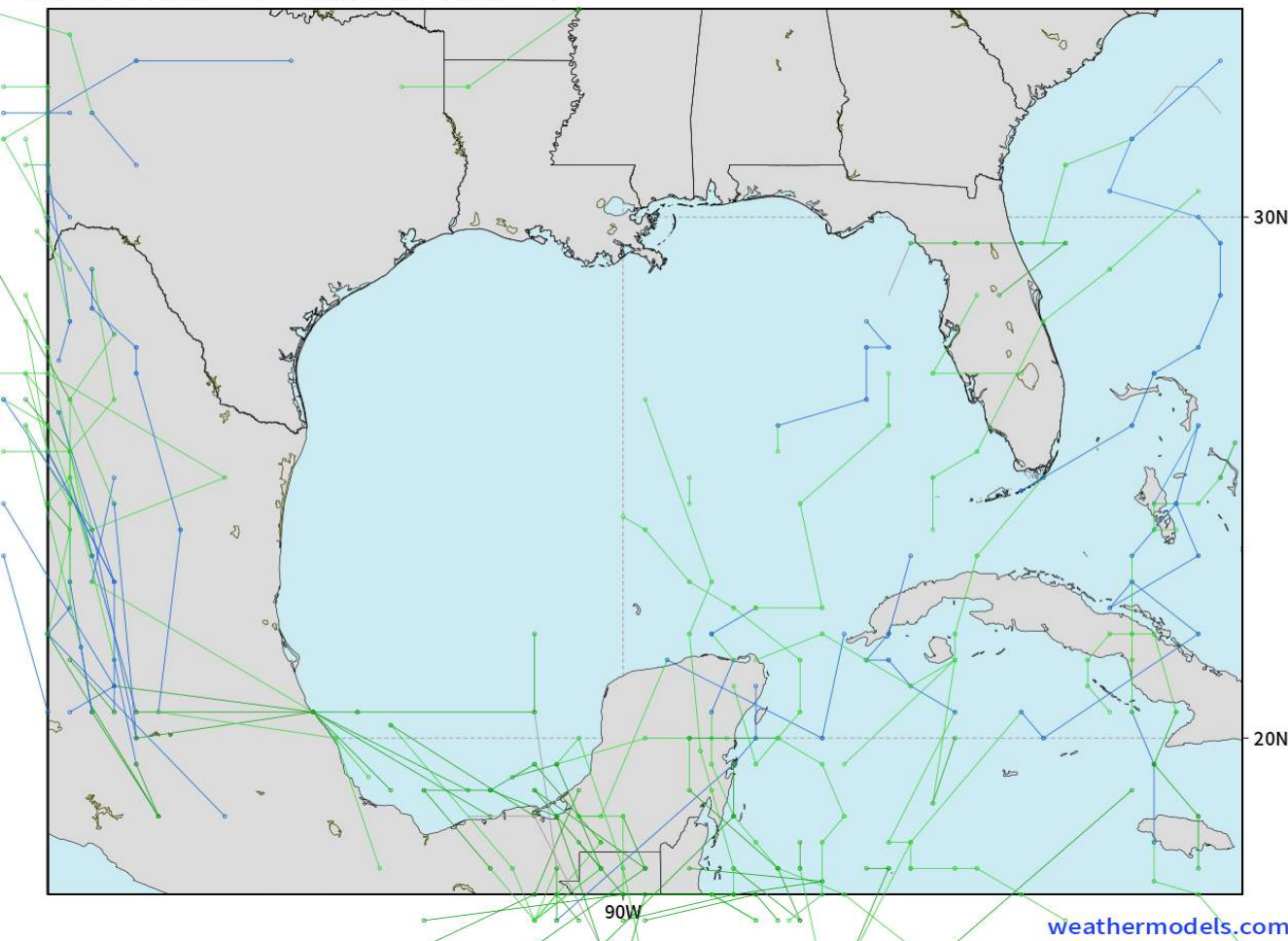
As always, please do not hesitate to reach out to us with any forecast questions via the chat option on Clarity or our on-call number, **(317)-560-8122** press **1** for forecast questions.

Houston Pilots Tropical Update

American Model Next 10 Days - Tropical Tracks

NOAA GEFSv12 | All Ensemble Cyclones +240 Hours
INIT: 18Z04JUN2024 --> UNTIL 18Z14JUN2024

o-o > 1010 hPa
o-o 1000 - 1010 hPa
o-o 980 - 999 hPa
o-o 960 - 979 hPa
o-o 950 - 959 hPa
o-o < 950 hPa

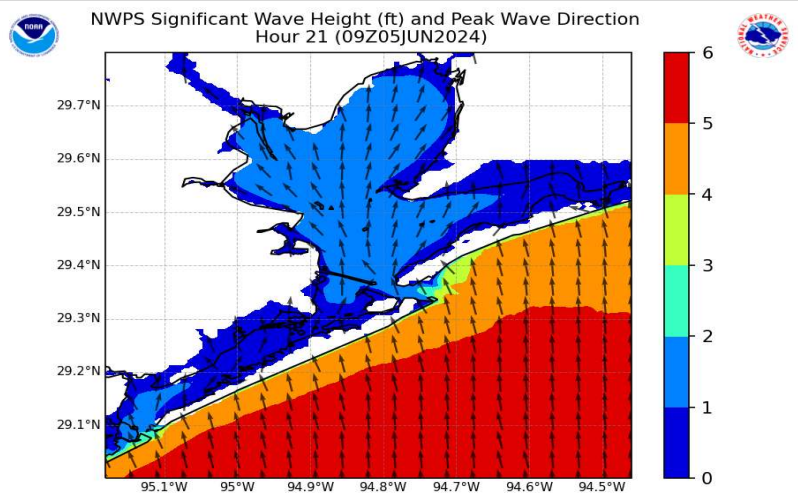


**Tropical
Development in
the Gulf of Mexico
is not favored in
the next 7-10 days.**

Houston Pilots Wave Height Update

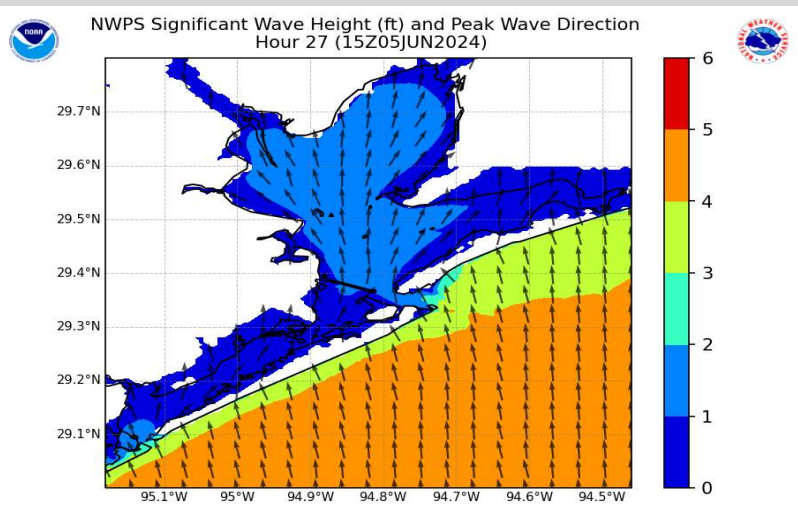


Significant Wave Height Image



4 AM CT WED

Stronger winds will allow for increased wave heights to continue into WED. The Boarding Station will be at risk for heights of 4-5 ft through the late morning



10 AM CT WED

Wave heights are then expected to recede with approaching storms towards 10 AM. Heights of 3-4 ft will continue through WED PM before decreasing below 3 ft starting THU.

Houston Pilots Visibility Chart (miles)



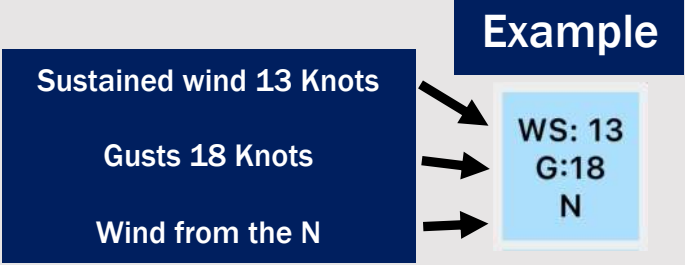
Forecast Confidence



Time	Tue 11pm	Wed 12am	Wed 1am	Wed 2am	Wed 3am	Wed 4am	Wed 5am	Wed 6am	Wed 7am	Wed 8am	Wed 9am	Wed 10am	Wed 11am	Wed 12pm	Wed 1pm	Wed 2pm	Wed 3pm	Wed 4pm	Wed 5pm	Wed 6pm	Wed 7pm	Wed 8pm	Wed 9pm	Wed 10pm
610 Bridge	10	10	10	10	10	10	9	10	6	6	10	4	10	6	10	10	10	10	10	10	10	9	10	9
Kinder 1	10	10	10	10	10	10	9	10	6	6	10	4	10	5	10	10	10	10	10	10	10	10	10	10
Greens Bayou	10	10	10	10	10	10	9	10	6	6	10	4	10	5	10	10	10	10	10	10	10	10	10	10
Shell Crude	10	10	10	10	10	10	9	10	6	6	10	4	10	5	10	10	10	10	10	10	10	10	10	10
Lynchburg Ferries	10	10	10	10	10	10	9	10	6	6	10	4	10	5	10	10	10	10	10	10	10	10	10	10
Exxon 3	10	10	10	10	10	10	9	9	6	6	10	4	10	5	10	10	10	10	10	10	10	10	10	10
Morgans Point	10	10	10	10	10	10	9	9	6	6	10	4	10	5	10	10	10	10	10	10	10	10	10	10
75/76	10	10	10	10	10	9	9	9	6	6	9	6	10	6	10	10	7	7	9	10	10	7	10	9
63/64	10	10	10	10	10	9	9	9	6	6	9	6	10	9	10	10	6	6	7	9	7	6	10	9
51/52	10	10	10	10	10	9	7	9	6	6	9	6	6	10	6	6	4	4	5	6	6	6	6	9
37/38	10	10	10	10	10	9	7	9	6	6	9	6	6	10	6	6	4	4	5	6	5	6	6	9
25/26	10	10	10	10	10	9	7	9	6	6	7	6	6	10	5	5	4	4	5	6	5	6	6	9
11/12	10	10	10	10	10	7	7	7	6	6	7	6	6	10	5	5	4	3	4	5	4	5	6	9
1 & 2 Bravo	6	6	7	6	6	6	6	6	6	6	6	6	6	6	3	3	3	3	3	4	3	3	4	9

NOTE: This is automated data that may/may not agree with the official BAM thinking that's found on the daily slides or special visibility report slides. This data should be used as a guide only

Houston Pilots Wind Chart



Time Knots	Tue 11pm	Wed 12am	Wed 1am	Wed 2am	Wed 3am	Wed 4am	Wed 5am	Wed 6am	Wed 7am	Wed 8am	Wed 9am	Wed 10am	Wed 11am	Wed 12pm	Wed 1pm	Wed 2pm	Wed 3pm	Wed 4pm	Wed 5pm	Wed 6pm	Wed 7pm	Wed 8pm	Wed 9pm	Wed 10pm
610 Bridge	11	11	10	10	9	9	9	9	8	8	8	8	9	9	9	9	9	9	9	8	7	7	6	5
	SSE	SSE	SSE	S	S	S	S	S	S	S	S	S	S	E	ESE	SSE	SSE	S	S	S	SSE	S	S	S
Kinder 1	11	10	10	10	9	9	9	8	8	8	8	8	9	9	9	9	9	9	9	8	7	7	6	5
	SSE	SSE	SSE	S	S	S	S	S	S	S	S	S	S	E	SE	SSE	SSE	S	S	S	SSE	S	S	S
Greens Bayou	11	10	10	10	9	9	9	8	8	8	8	8	9	9	9	9	9	9	8	7	7	7	6	5
	SSE	SSE	SSE	S	SSE	S	S	S	S	S	S	S	SSE	E	E	SSE	SSE	SSE	S	S	SSE	S	S	S
Shell Crude	11	10	10	10	9	9	9	8	8	8	8	8	9	9	9	9	9	9	9	8	7	7	6	5
	SSE	SSE	SSE	S	SSE	S	S	S	S	S	S	S	S	E	E	SSE	SSE	SSE	S	SSE	SSE	S	S	S
Lynchburg Ferries	11	10	10	10	9	9	9	8	8	8	8	8	9	9	9	9	9	9	9	8	7	7	6	5
	SSE	SSE	S	S	S	S	S	S	S	S	S	S	SSE	E	ESE	SSE	SSE	SSE	SSE	SSE	SSE	S	S	S
Exxon 3	16	16	16	16	15	15	14	13	12	12	11	11	11	11	11	11	11	11	11	11	11	10	9	9
	SSE	SSE	SSE	S	S	S	S	S	S	S	S	S	S	ESE	SSE	SE	SSE	SSE	SSE	SSE	SSE	S	S	S
Morgans Point	16	16	16	15	15	15	14	13	12	12	11	11	11	11	11	11	11	11	11	11	11	10	9	9
	SSE	SSE	S	S	S	S	S	S	S	S	S	S	S	E	ESE	SE	SSE	SSE	SSE	SSE	SSE	S	S	S
75/76	17	17	17	17	17	16	15	15	14	13	13	12	12	12	12	12	12	12	12	11	11	11	11	9
	SSE	SSE	S	S	S	S	S	S	S	S	S	S	S	ENE	ESE	SE	SE	SSE	SSE	SSE	S	SSE	S	S
63/64	17	17	17	17	17	16	16	15	14	14	13	13	12	12	12	12	12	12	12	11	11	11	11	10
	SSE	SSE	S	S	S	S	S	S	S	S	S	S	ESE	ESE	SE	SE	SSE	SSE	SSE	SSE	S	SSE	S	S
51/52	17	17	17	17	17	17	17	15	15	15	14	13	13	13	12	12	12	12	12	11	11	11	11	10
	SSE	SSE	S	S	S	S	S	S	S	S	S	S	S	S	ESE	SE	SSE	SSE	SSE	SSE	S	S	S	S
37/38	17	17	17	17	17	17	17	16	15	15	14	13	13	13	12	12	12	12	12	11	11	11	11	10
	SSE	SSE	S	S	S	S	S	S	S	S	S	S	S	S	SE	SSE	SSE	SSE	SSE	S	SSE	S	S	S
25/26	17	17	17	17	17	16	16	15	15	14	14	13	13	12	12	12	12	12	11	11	11	11	10	10
	SSE	SSE	S	S	S	S	S	S	S	S	S	S	S	S	SE	SSE	SSE	SSE	S	SSE	S	S	S	S
11/12	15	15	15	15	15	15	14	14	13	13	13	13	12	12	11	11	11	11	11	11	10	9	9	9
	SSE	SSE	S	S	S	S	S	S	S	S	S	S	S	SE	S	SSE	SSE	SSE	S	SSE	S	S	S	S
1 & 2 Bravo	17	17	17	18	17	17	17	17	16	15	15	14	13	13	12	11	11	11	11	11	11	11	11	11
	SSE	SSE	S	S	S	S	S	S	S	S	S	S	S	S	SSE	SSE	SSE	SSE	SSE	SSE	S	S	S	S

NOTE: This is automated data that may/may not agree with the official BAM thinking that's found on the daily slides. This data should be used as a guide only.

Houston Pilots: Wed. 6/5/2024



Forecast Discussion

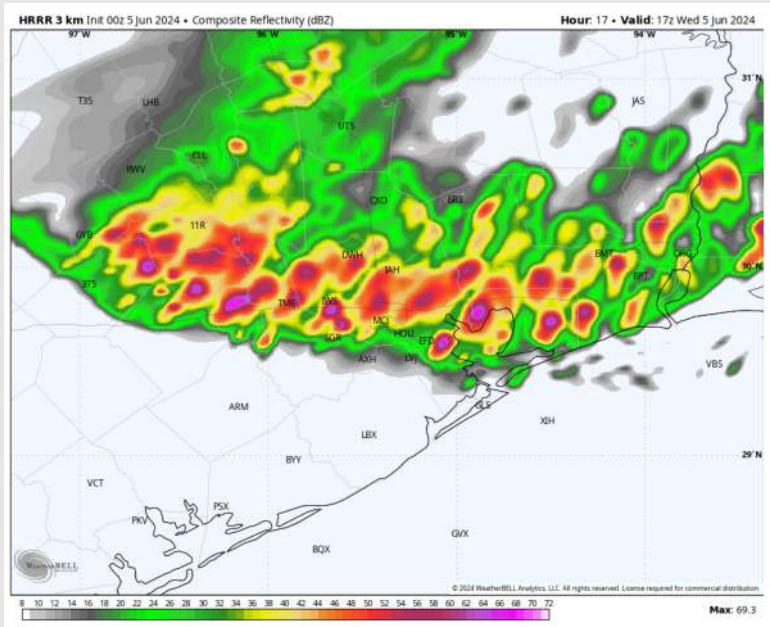
Precip: Favoring dry conditions through 11 AM when scattered to widespread storms will be able to work through the areas. Showers and storms will continue through 5 PM before tapering off in the early evening. Dry conditions after 8 PM. **Wind gusts of 40-50 kts and hail will be possible with strongest storms!**

Wind: Winds out of the S/SE through ~6 PM before becoming variable. **N of Morgan's Point:** Winds at 9-14 kts through 8 PM before decreasing to 4-9 kts. **S of Morgan's Point:** Winds at 17-22 kts through 8 PM before decreasing to 9-14 kts. **Non t-storm wind gusts of 22-27 kts possible through 8 PM for all stations.**

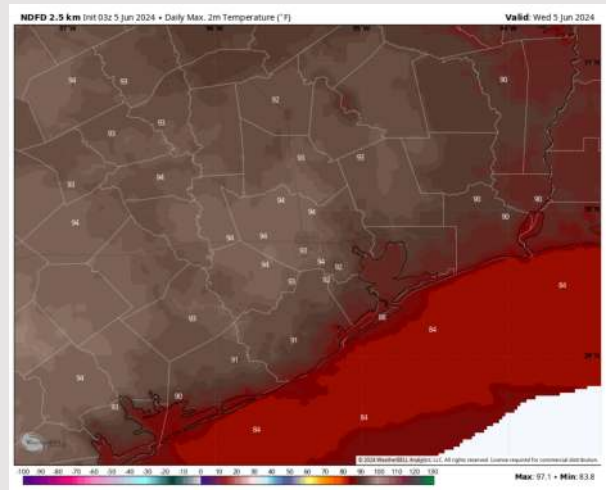
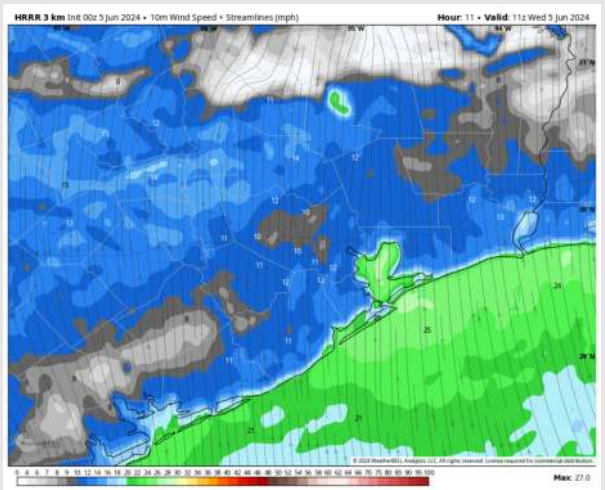
High Temps: **N of Morgan's Point:** Low 90s F. **S of Morgan's Point:** Mid/Upper 80s F.

Visibility: No fog is favored however reduced visibilities will be possible under heavier storms/downpours.

Precip Image: 12 PM CT



Wind Speed:
6 AM CT



High Temps
Today

Houston Pilots: Thu. 6/6/2024



Forecast Discussion

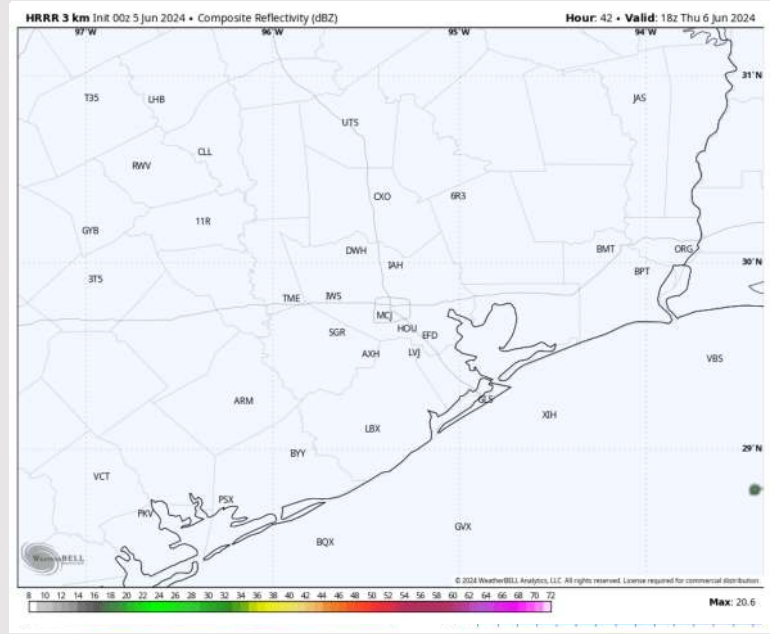
Precip: Dry conditions are favored throughout the day on THU.

Wind: Winds will be variable to start THU, settling out of the N/NW by ~8 AM then out of the NE by 3 PM. **N of Morgan's Point:** Winds at 2 - 6 kts. **S of Morgan's Point:** Winds at 4-8 kts thorough the day

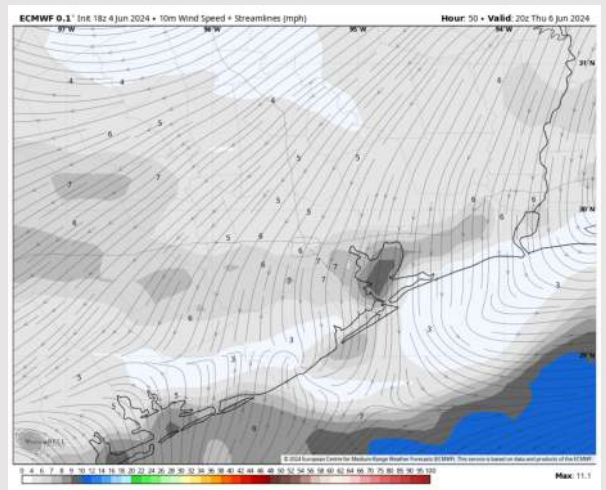
High Temps: **N of Morgan's Point:** Low/Mid 90s F **S of Morgan's Point:** Upper 80s F.

Visibility: Not anticipating any visibility concerns for Thursday.

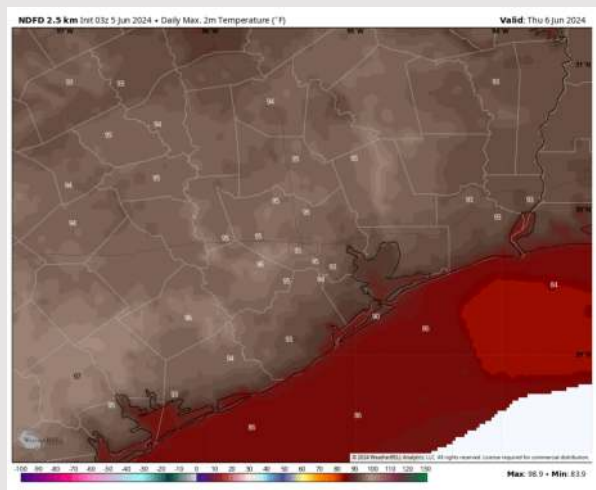
Precip Image: 1 PM CT



Wind Speed:
3 PM CT



High Temps
Thursday



Houston Pilots: Fri. 6/7/2024



Forecast Discussion

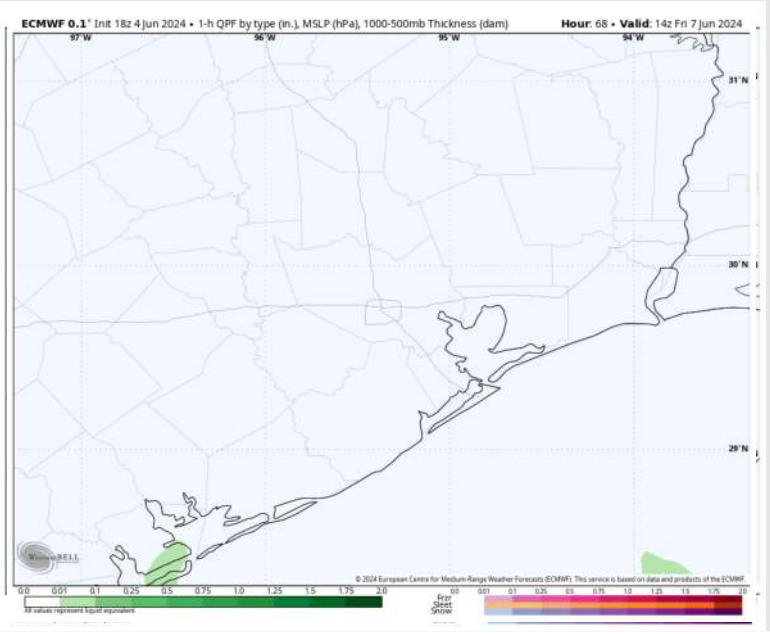
Precip: Favoring dry conditions throughout the day on Friday.

Wind: Winds out of the NE through ~1 PM before transitioning to being out of the SE for the PM hours
N of Morgan's Point: Favoring winds at 2-6 kts throughout the day
S of Morgan's Point: Favoring winds at 3-8 kts.

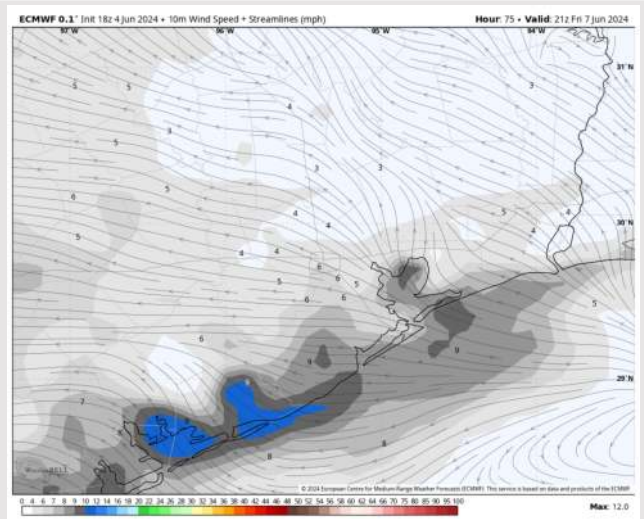
High Temps: N of Morgan's Point: Mid 90's F. S of Morgan's Point: Low 90s F.

Visibility: No fog is favored for Friday.

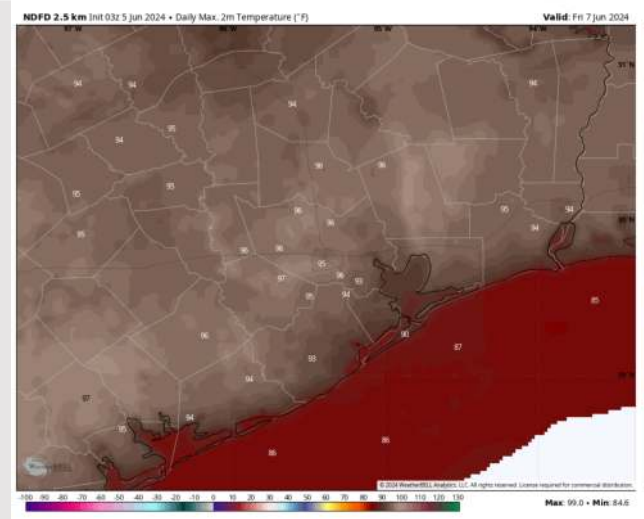
Precip Image: 9 AM CT



Wind Speed
2 PM CT



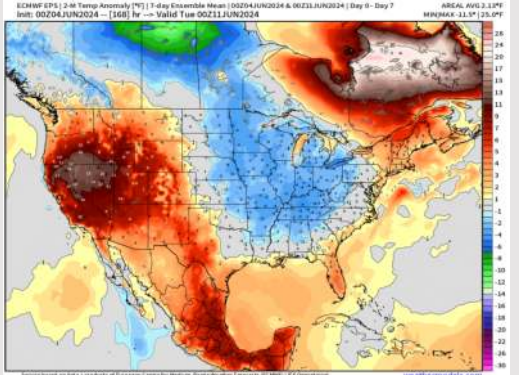
High Temps
Friday



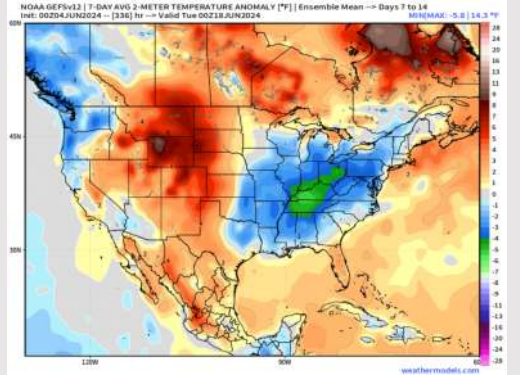
Houston Pilots: 6/4/24



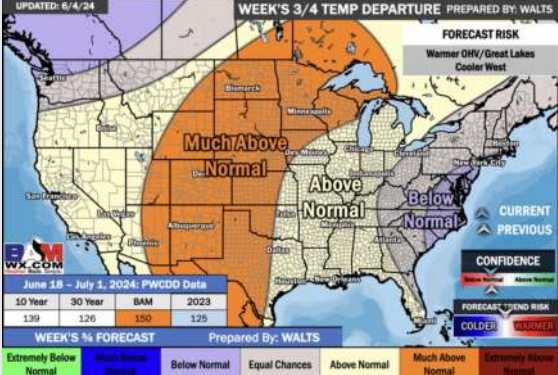
Next 7 Day Temperature Departure



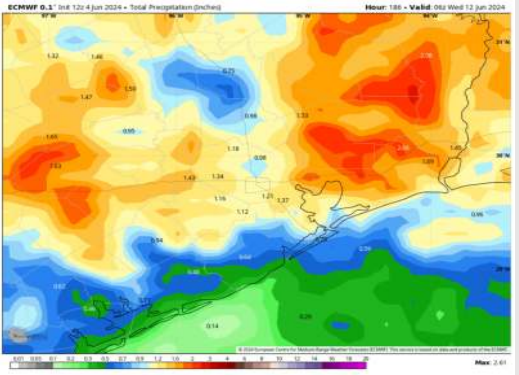
8-14 Day Temperature Departure



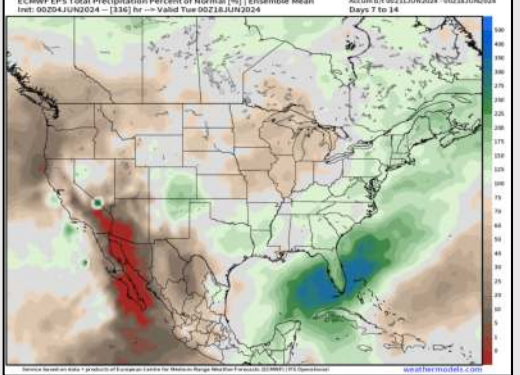
15-30 Day Temperature Departure



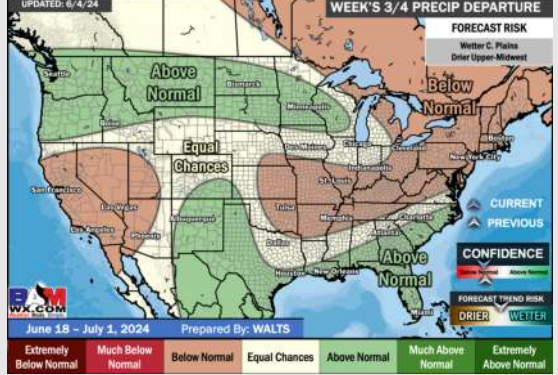
Next 7 Day Total Precipitation



8-14 Day % of Average Precip.



15-30 Day % of Average Precip.



- Temps are expected to be above normal for the week 1 timeframe. Outside of rain/storm chances today, next best opportunity for rain will come SUN/MON of next week.
- Above normal precipitation chances are at play during the week 2 timeframe. Temps are expected to be near to below normal.
- Above normal chances for precipitation are favored in the weeks 3/4 timeframe. Temperatures expected to be above normal for the weeks 3 and 4 timeframe.