

Houston Pilots Forecast Package

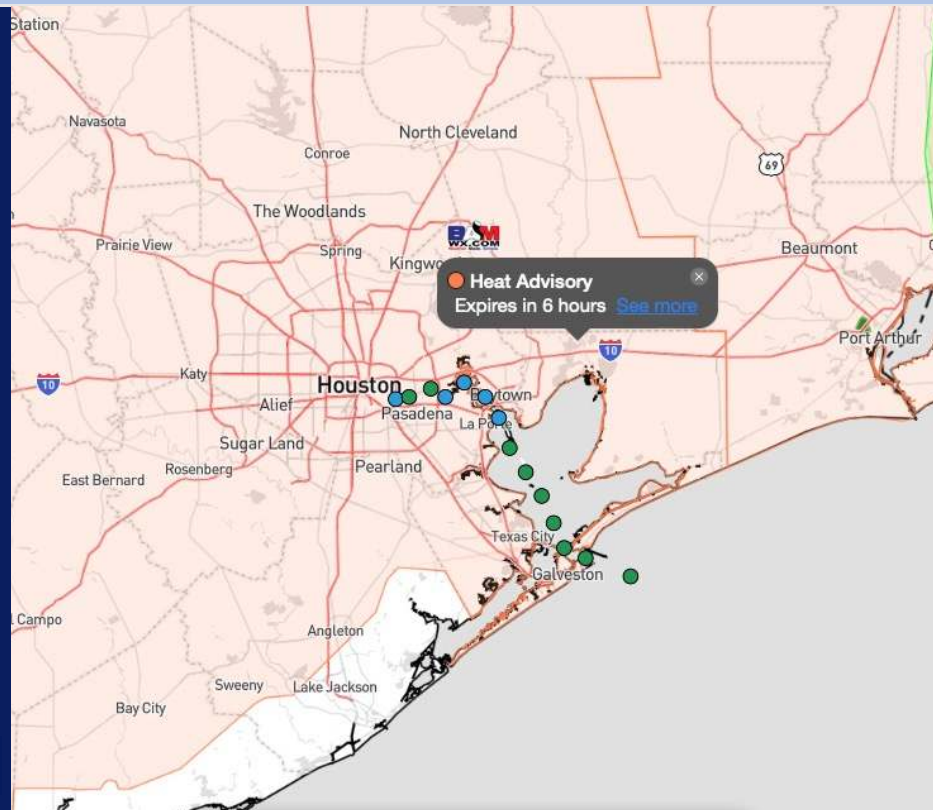


Updated: 12:30 PM CT
Sunday, June 30, 2024

Forecaster: Hope Kleitsch

Weather Headlines

- Isolated rainfall chances will continue throughout the early parts of the week. Favoring more dry time than not!
- Winds are expected to be relatively calm through the beginning of the week, not expected to exceed 16 kts.
- **Monitoring Hurricane Beryl developing E of Lesser Antilles. See graphics below for latest thinking!**



Current Radar: 12:30 PM CT



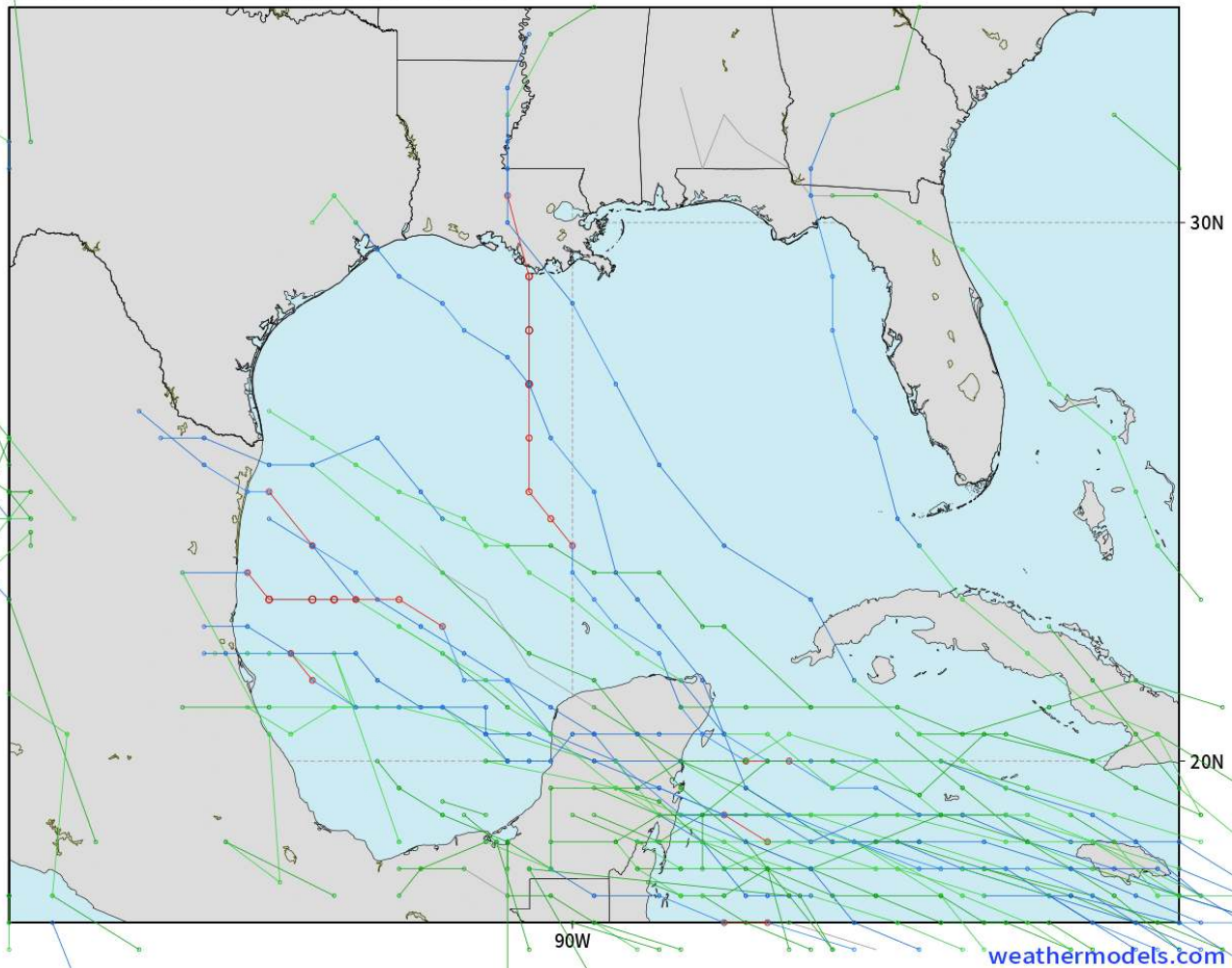
As always, please do not hesitate to reach out to us with any forecast questions via the chat option on Clarity or our on-call number, **(317)-560-8122** press **1** for forecast questions.

Houston Pilots Tropical Update

American Model Next 10 Days - Tropical Tracks

NOAA GFSv12 | All Ensemble Cyclones +240 Hours
INIT: 06Z30JUN2024 --> UNTIL 06Z10JUL2024

o-o > 1010 hPa
o-o 1000 - 1010 hPa
o-o 980 - 999 hPa
o-o 960 - 979 hPa
o-o 950 - 959 hPa
o-o < 950 hPa



Major Hurricane Beryl has developed E of the Lesser Antilles. (See Next Slide for More Info). Timing for Gulf of Mexico impacts will be July 7 – 9 **IF** Beryl can push into area.

A low-end risk for additional tropical development will also be in play W of Yucatan in the southern most portions of the Gulf of Mexico over the weekend. This is not favored to directly impact Houston.

Hurricane Beryl Outlook

SUN June 30th, 2024 – THU July 4th

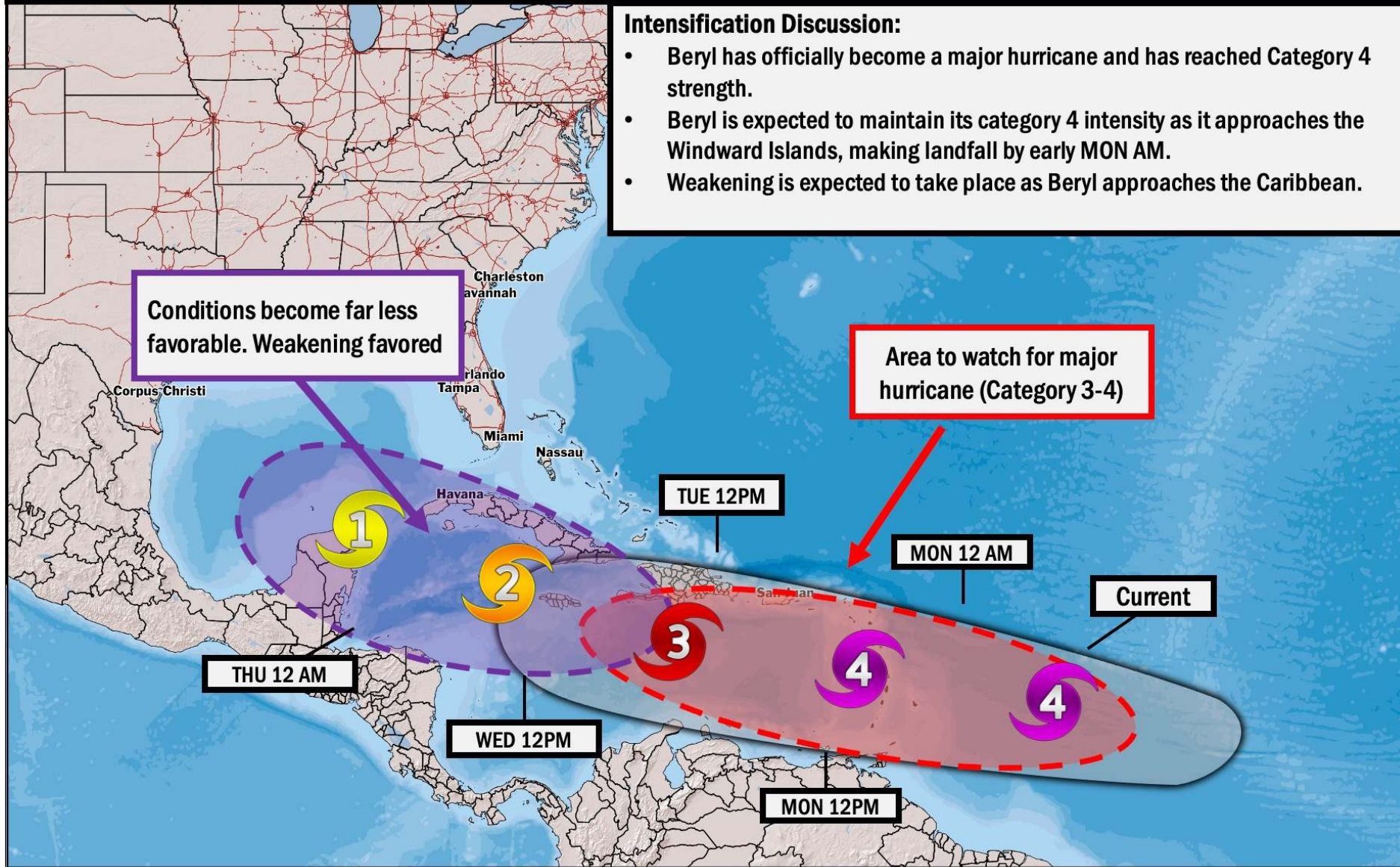
FORECASTER: Kleitsch

UPDATED: 6/30/24 1:00 PM ET



Intensification Discussion:

- Beryl has officially become a major hurricane and has reached Category 4 strength.
- Beryl is expected to maintain its category 4 intensity as it approaches the Windward Islands, making landfall by early MON AM.
- Weakening is expected to take place as Beryl approaches the Caribbean.



Houston Pilots Visibility Chart (miles)



Time	Sun 1pm	Sun 2pm	Sun 3pm	Sun 4pm	Sun 5pm	Sun 6pm	Sun 7pm	Sun 8pm	Sun 9pm	Sun 10pm	Sun 11pm	Mon 12am	Mon 1am	Mon 2am	Mon 3am	Mon 4am	Mon 5am	Mon 6am	Mon 7am	Mon 8am	Mon 9am	Mon 10am	Mon 11am	Mon 12pm
610 Bridge	10	10	10	10	10	10	10	10	10	10	10	10	10	10	10	10	9	9	6	10	10	10	10	10
Kinder 1	10	10	10	10	10	10	10	10	10	10	10	10	10	10	10	10	9	9	6	10	10	10	10	10
Greens Bayou	10	10	10	10	10	10	10	10	10	10	10	10	10	10	10	10	10	9	6	10	10	10	10	10
Shell Crude	10	10	10	10	10	10	10	10	10	10	10	10	10	10	10	10	10	9	6	10	10	10	10	10
Lynchburg Ferries	10	10	10	10	10	10	10	10	10	10	10	10	10	10	10	10	9	9	6	10	10	10	10	10
Exxon 3	10	10	10	10	10	10	10	10	10	10	10	10	10	10	10	10	10	9	6	10	10	10	10	10
Morgans Point	10	10	10	10	10	10	10	10	10	10	10	10	10	10	10	10	10	9	6	10	10	10	10	10
75/76	10	10	10	10	10	10	10	10	10	10	10	10	10	10	10	10	10	10	6	10	10	10	10	10
63/64	10	10	10	10	10	10	10	10	10	10	10	10	10	10	10	10	10	10	6	10	10	10	10	10
51/52	10	10	10	10	10	10	10	10	10	10	10	10	10	10	10	10	10	10	6	10	10	10	10	10
37/38	10	10	10	10	10	10	10	10	10	10	10	10	10	10	10	10	10	10	6	10	10	10	10	10
25/26	10	10	10	10	10	10	10	10	10	10	10	10	10	10	10	10	10	10	6	10	10	10	10	10
11/12	10	10	10	10	10	10	10	10	10	10	10	10	10	10	10	10	10	10	6	10	10	10	10	10
1 & 2 Bravo	10	10	10	10	10	10	10	10	10	10	10	10	10	10	9	7	6	6	4	6	10	9	10	10

NOTE: This is automated data that may/may not agree with the official B.A.M. thinking that's found on the daily slides or special visibility report slides. This data should be used as a guide only

Houston Pilots Wind Chart



Forecast Confidence



Sustained wind 13 Knots
Gusts 18 Knots
Wind from the N

Example

WS: 13
G:18
N

Time Knots	Sun 1pm	Sun 2pm	Sun 3pm	Sun 4pm	Sun 5pm	Sun 6pm	Sun 7pm	Sun 8pm	Sun 9pm	Sun 10pm	Sun 11pm	Mon 12am	Mon 1am	Mon 2am	Mon 3am	Mon 4am	Mon 5am	Mon 6am	Mon 7am	Mon 8am	Mon 9am	Mon 10am	Mon 11am	Mon 12pm
610 Bridge	5	5	5	6	7	7	7	6	5	4	3	3	3	3	2	2	2	2	2	2	2	3	3	3
	9	10	11	12	12	12	11	10	9	9	7	6	6	5	5	5	5	5	5	5	5	5	5	6
	ESE	SE	SSE	SE	SE	SSE	SSE	SSE	S	S	S	S	SSW	SSW	WSW	WSW	W	W	W	WNW	WNW	NW	NW	NNW
Kinder 1	5	5	5	6	7	7	7	6	5	4	3	3	3	3	2	2	2	2	2	2	2	3	3	3
	10	10	11	12	12	12	11	10	9	8	7	6	6	5	5	5	5	5	5	5	5	5	6	6
	ESE	SE	SE	SE	SE	SE	SSE	SSE	S	S	S	SSW	SSW	SW	WSW	WSW	W	W	WNW	WNW	WNW	NW	NW	NNW
Greens Bayou	5	5	5	6	6	6	6	5	5	4	3	3	3	2	2	2	2	2	2	2	2	3	3	2
	10	9	11	11	12	12	11	10	9	8	7	6	6	5	5	5	5	5	5	5	5	5	6	6
	ESE	SE	SE	SE	SE	SE	SSE	SSE	S	S	S	SSW	SSW	SW	WSW	WSW	W	W	WNW	WNW	WNW	WNW	NW	NNW
Shell Crude	5	5	6	6	7	6	6	5	5	4	3	3	3	2	2	2	2	2	2	2	2	3	3	2
	10	9	11	11	12	12	11	10	9	8	7	6	6	5	5	5	5	5	5	5	5	5	6	6
	ESE	SE	SE	SE	SE	SSE	SSE	SSE	S	S	S	SSW	SSW	SW	WSW	WSW	W	W	WNW	WNW	WNW	NW	NW	NNW
Lynchburg Ferries	4	5	5	6	6	6	6	5	4	3	3	3	2	2	2	2	2	2	2	2	2	2	2	2
	9	9	10	11	12	12	11	10	9	8	6	6	5	5	5	5	5	5	5	5	5	6	6	6
	SE	SE	SE	SE	SE	SSE	SSE	SSE	S	S	S	SSW	SSW	SW	WSW	WSW	W	W	WNW	WNW	WNW	WNW	NW	NNW
Exxon 3	6	7	7	8	9	9	9	8	7	7	6	5	5	5	5	4	4	4	4	4	4	4	3	3
	11	11	12	13	13	13	12	11	11	10	9	8	7	7	7	7	7	6	7	7	7	7	6	6
	SE	SE	SSE	SE	SSE	SSE	SSE	S	S	S	SSW	SSW	SW	WSW	WSW	W	W	WNW	WNW	WNW	WNW	NW	NW	NNW
Morgans Point	6	7	8	9	9	9	9	8	7	7	6	5	5	5	4	4	4	4	4	4	4	4	3	3
	11	11	13	13	14	13	12	12	11	10	8	8	7	7	7	7	7	6	7	7	7	7	6	6
	SE	SE	SSE	SSE	SSE	SSE	SSE	S	S	S	SSW	SSW	SW	WSW	W	W	WNW	WNW	WNW	WNW	NW	WNW	NW	NNW
75/76	6	7	7	9	9	9	9	8	7	7	6	6	5	5	5	5	5	5	5	5	4	4	3	3
	11	12	13	14	14	13	13	12	11	11	9	9	8	8	8	8	8	7	8	8	8	7	6	6
	SE	SE	SSE	SSE	SSE	SSE	SSE	S	S	S	SSW	SSW	SW	WSW	W	W	W	WNW	WNW	WNW	WNW	NW	NW	N
63/64	6	7	7	8	8	8	9	8	8	7	7	6	6	5	5	5	5	5	5	5	5	4	3	3
	11	11	13	13	13	13	12	12	11	10	9	9	8	8	8	8	8	7	8	8	8	7	6	6
	SE	SE	SSE	SSE	SSE	SSE	SSE	S	S	S	S	SSW	SSW	WSW	WSW	W	W	WNW	WNW	WNW	WNW	NW	NW	N
51/52	7	7	7	8	8	8	8	8	7	7	7	6	6	5	5	5	5	5	5	5	5	3	3	3
	11	11	12	13	13	13	12	11	11	10	9	9	8	8	8	8	8	7	8	8	8	7	6	6
	SE	SE	SE	SSE	SSE	SSE	SSE	S	S	S	S	SSW	SSW	SW	WSW	W	W	WNW	WNW	WNW	NW	NW	NNW	N
37/38	6	7	7	8	8	8	8	7	7	7	6	6	5	5	5	5	5	5	5	5	5	3	3	3
	11	11	12	12	13	13	12	11	10	10	9	9	8	8	8	8	8	7	8	8	8	7	6	6
	SE	SE	SE	SE	SSE	SSE	SSE	S	S	S	S	SSW	SSW	SW	WSW	W	W	WNW	WNW	WNW	NW	NW	NNW	N
25/26	7	7	7	7	8	8	8	7	7	7	6	6	5	5	5	5	5	5	5	5	5	4	3	3
	11	11	11	12	12	12	11	11	10	10	9	9	8	8	7	7	7	7	7	8	7	7	6	6
	ESE	SE	SE	SE	SE	SSE	SSE	SSE	S	S	S	S	S	SSW	SW	WSW	W	W	WNW	WNW	NW	NW	NNW	N
11/12	7	7	7	7	7	7	7	7	7	6	5	5	5	5	4	4	4	4	4	4	4	5	4	4
	11	11	11	12	12	12	11	10	10	10	9	8	8	8	7	7	7	7	7	8	7	8	7	6
	SE	SE	SE	SE	SE	SSE	SSE	SSE	S	S	S	S	S	SSW	SW	WSW	W	W	WNW	WNW	WNW	NW	NW	NNW
1 & 2 Bravo	6	7	7	7	7	7	7	7	7	7	7	7	6	6	5	5	5	5	5	5	5	5	3	3
	10	10	10	11	12	12	11	11	11	11	10	9	9	9	8	8	8	7	8	8	8	8	7	6
	ESE	ESE	SE	SE	SE	SE	SSE	SSE	SSE	S	S	S	S	SSW	SSW	WSW	WSW	W	WNW	WNW	NW	NW	NW	NW

NOTE: This is automated data that may/may not agree with the official BAM thinking that's found on the daily slides. This data should be used as a guide only.

Houston Pilots: Sun. 6/30/2024



Forecast Discussion

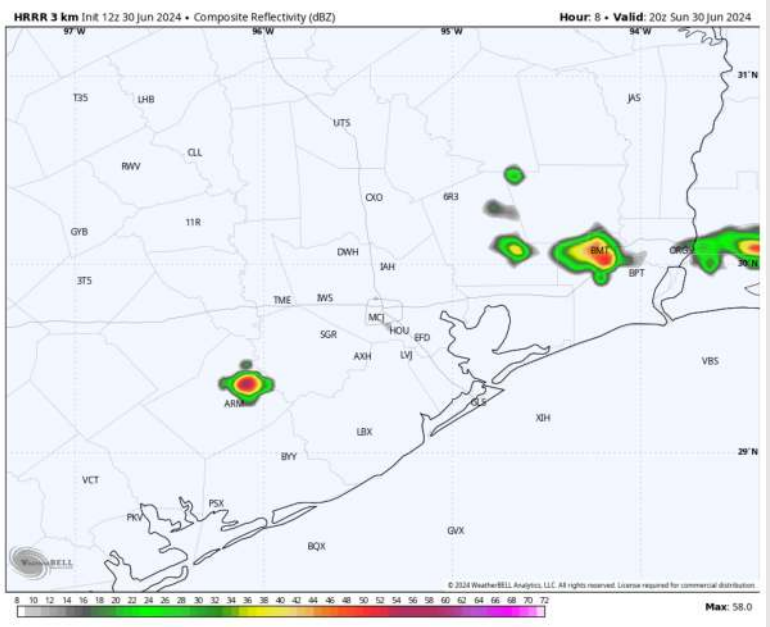
Precip: Isolated pop-up showers (20%) develop after 2 PM. A quick downpour cannot be out of the picture. Dry conditions are favored after 9 PM and throughout the remainder of the night.

Wind: Winds out of the SE throughout the rest of the day. **N of Morgan's Point:** Winds at 3-9 kts for the remainder of the day. **S of Morgan's Point:** Winds at 5-10 kts before increasing to 10-16 kts after 4 PM and through the remainder of the night.

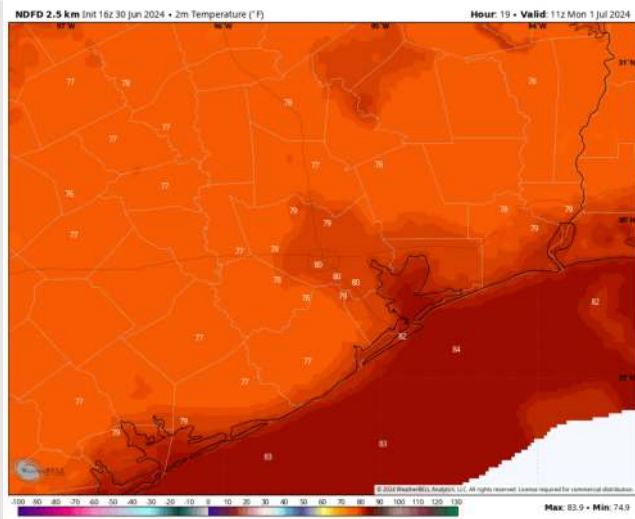
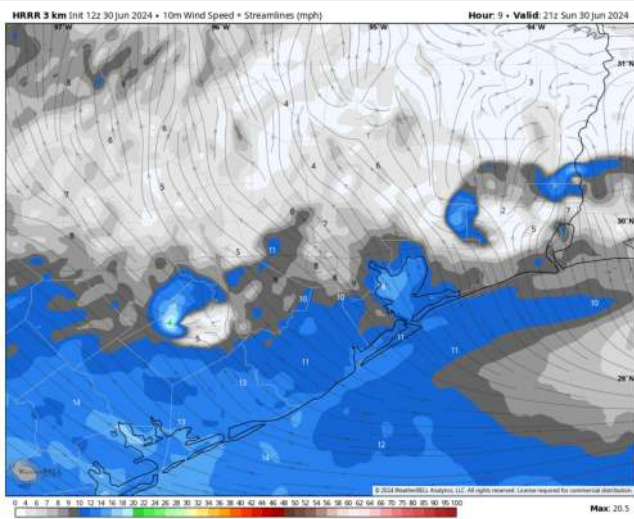
Low Temps: **N of Morgan's Point:** Upper 70s to low 80s F. **S of Morgan's Point:** Lower to mid 80s F.

Visibility: Not anticipating any fog concerns for today.

Precip Image: 3 PM CT



Wind Speed:
4 PM CT



Low Temps
MON AM

Houston Pilots: Mon. 7/1/2024



Forecast Discussion

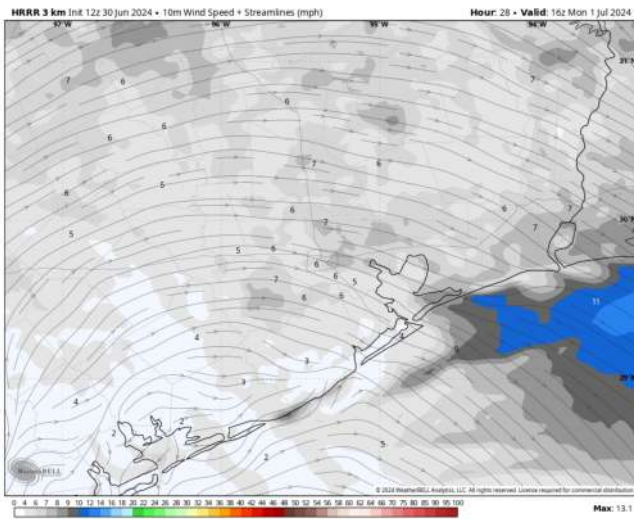
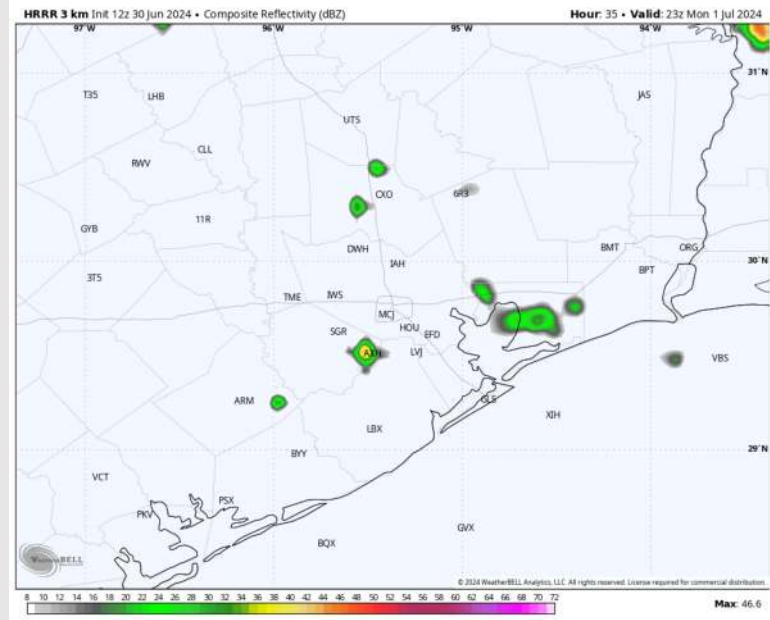
Precip: Dry conditions expected through a majority of the day. Hit/Miss (10%) showers will be possible from 4PM – 10PM. Not favoring storms at this time but will continue to monitor trends for late night storm cluster.

Wind: Winds expected gradually work clockwise, settling out of the NW from 6 AM through 1 PM. After 1 PM, winds become variable, before setting to out of the S/SW by 8 PM. **N of Morgan's Point:** Winds at 2-7 kts for the entire day. **S of Morgan's Point:** Favoring winds 5-10 kts through 5 PM before slightly increasing to 9-14 kts the rest of MON.

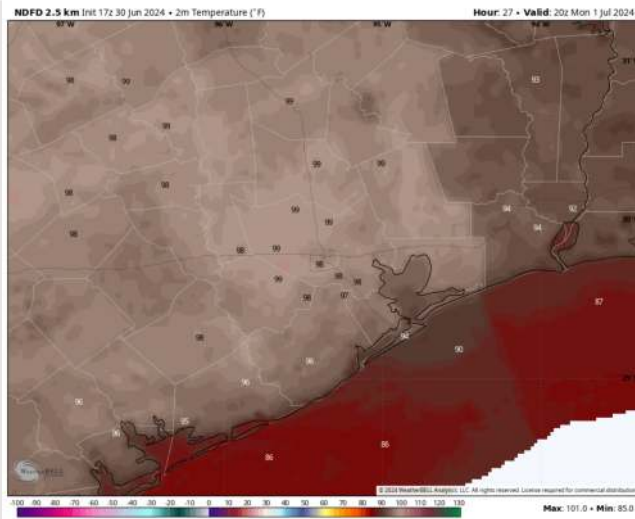
High Temps: **N of Morgan's Point:** Upper 90s F. **S of Morgan's Point:** Lower to mid 90s F

Visibility: Not favoring any fog concerns for Monday.

Precip Image: 6 PM CT



Wind Speed
11 AM CT



High Temps
Monday

Forecast Discussion

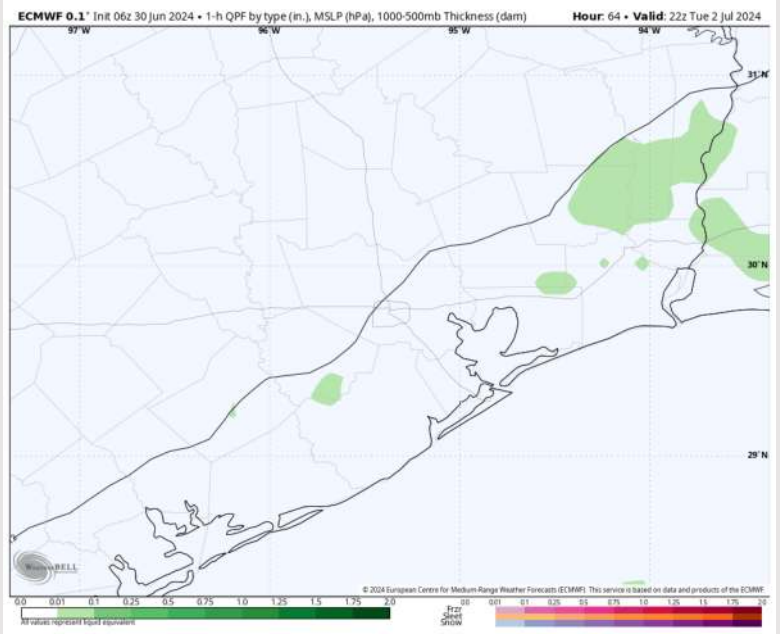
Precip: Isolated showers/thunderstorms (10%) will be possible from 4-7 PM, although majority of coverage will remain north of stations. Dry conditions favored after 7 PM.

Wind: Winds will begin out of the SW, gradually working clockwise (starting out of the SW) throughout TUE AM. By 1 PM, winds will shift to being out of the SE and continue for the PM hours TUE. **N of Morgan's Point:** Winds will be at 2-9 kts throughout TUE. **S of Morgan's Point:** Winds at 7-12 kts outside of a brief calming to 4-9 kts from 9 AM to 3 PM.

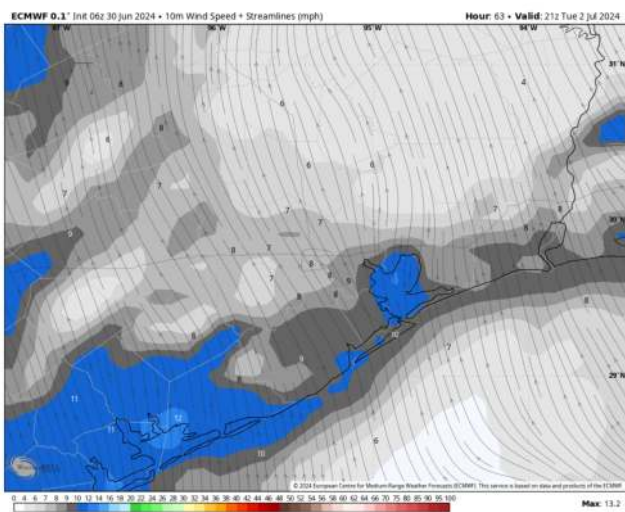
High Temps: **N of Morgan's Point:** Mid 90s F. **S of Morgan's Point:** Upper 80s to lower 90s F

Visibility: Not anticipating any fog concerns for Tuesday.

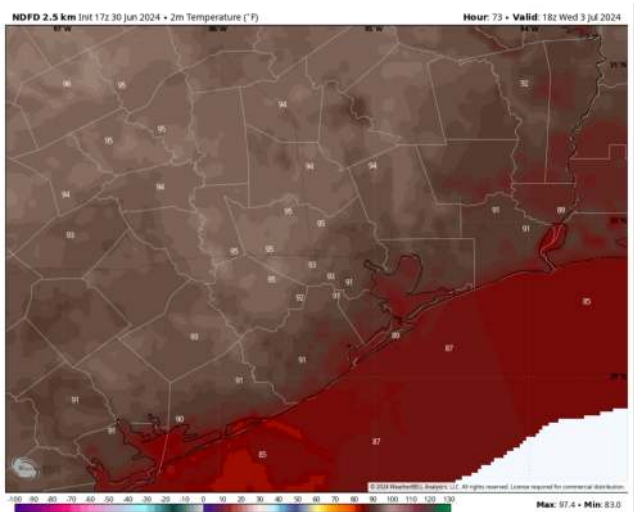
Precip Image: 5 PM CT



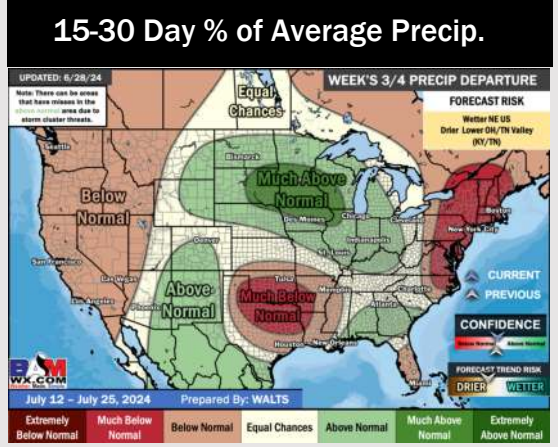
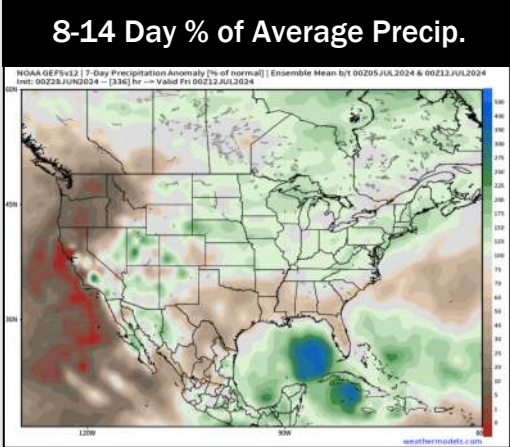
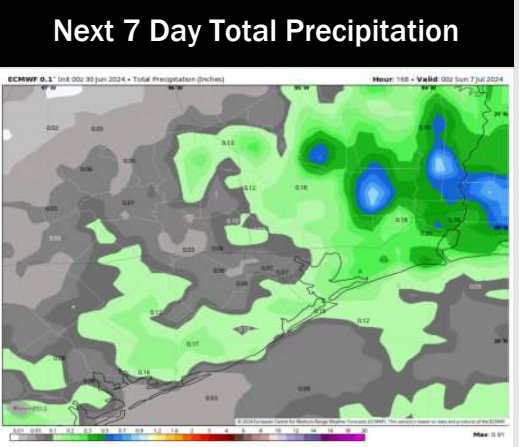
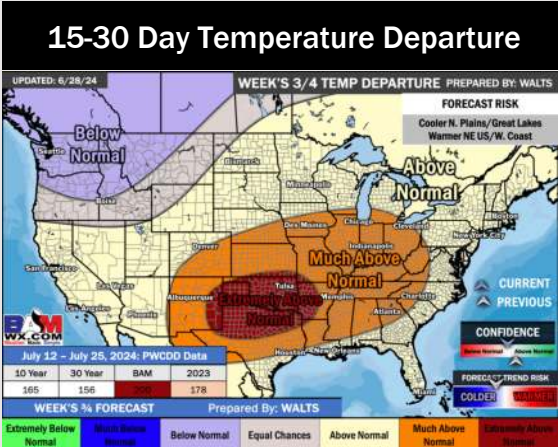
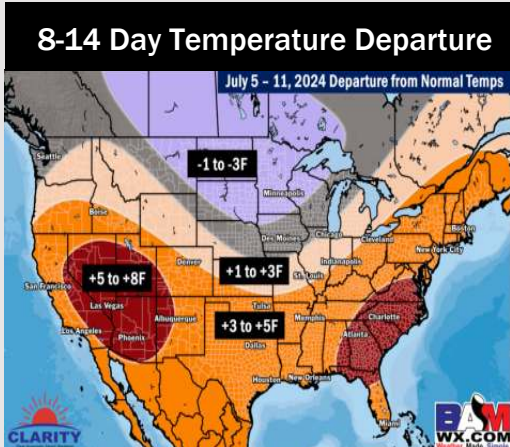
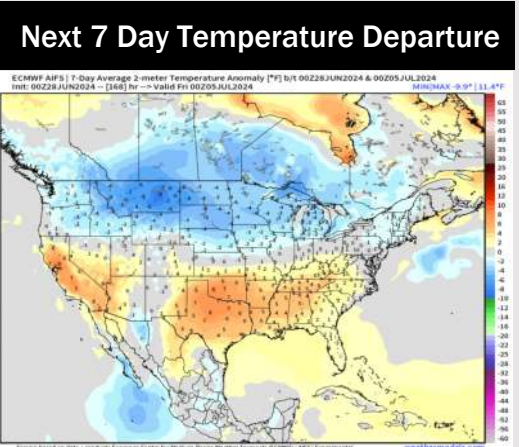
Wind Speed:
4 PM CT



High Temps
Tuesday



Houston Pilots: 6/30/24



- Temps are expected to be above normal for the week 1 timeframe. Only scattered shower/storm risks are favored throughout the Week 1 period.
- Well below normal precipitation chances are at play during the week 2 timeframe, with the risk of tropical activity needing to be monitored. However, confidence is low in this development. Temps are expected to be above normal for week 2.
- Below normal chances for precipitation and above normal temperatures are favored in the weeks 3/4 timeframe.