

# Houston Pilots Forecast Package



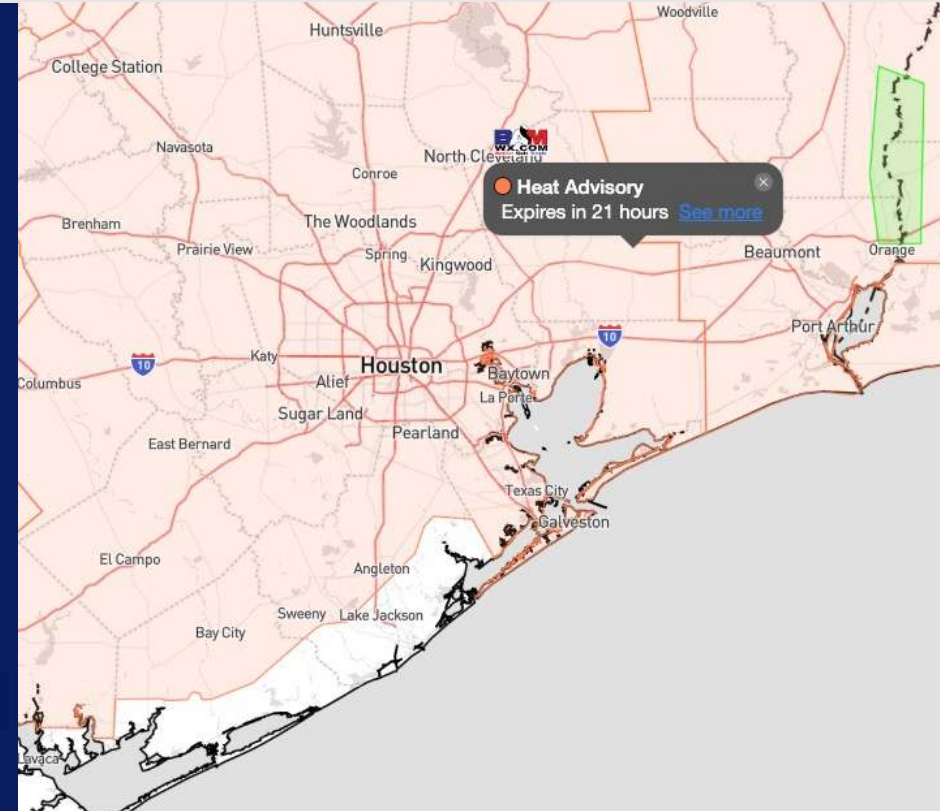
Updated: 11:00 PM CT

Saturday, June 29, 2024

Forecaster: Jonathan Kipper

## Weather Headlines

- Isolated rainfall chances will continue throughout the early parts of next week. Favoring more dry time than not!
- Winds will gradually calm throughout the weekend.
- **Monitoring Hurricane Beryl developing E of Lesser Antilles. See graphics below for latest thinking!**



Current Radar: 10:45 PM CT



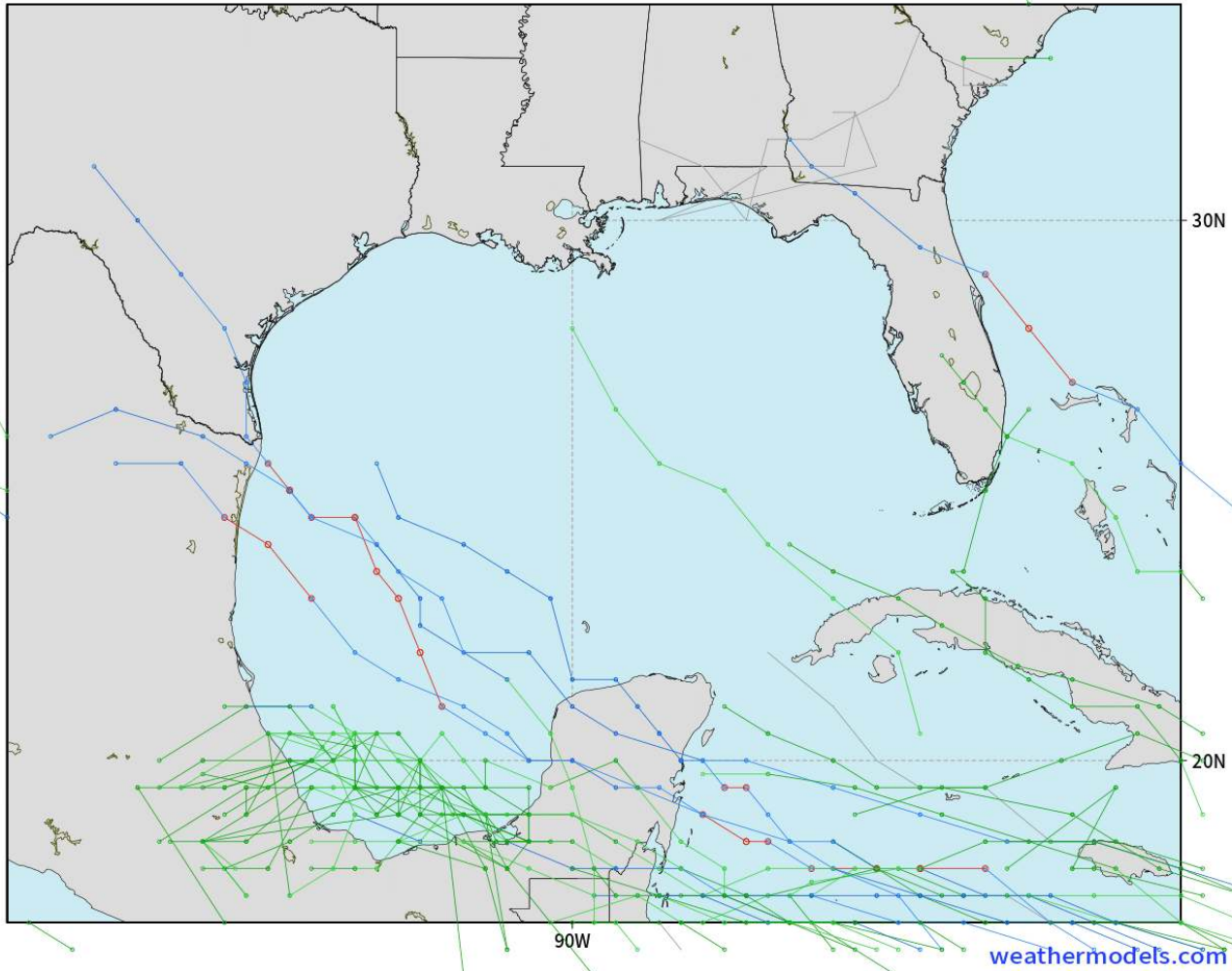
As always, please do not hesitate to reach out to us with any forecast questions via the chat option on Clarity or our on-call number, **(317)-560-8122** press **1** for forecast questions.

# Houston Pilots Tropical Update

## American Model Next 10 Days - Tropical Tracks

NOAA GFSv12 | All Ensemble Cyclones +240 Hours  
INIT: 18Z29JUN2024 --> UNTIL 18Z09JUL2024

o-o > 1010 hPa  
o-o 1000 - 1010 hPa  
o-o 980 - 999 hPa  
o-o 960 - 979 hPa  
o-o 950 - 959 hPa  
o-o < 950 hPa



Tropical Storm Beryl has developed E of the Lesser Antilles. (See Next Slide for More Info). Timing for Gulf of Mexico impacts will be July 7 – 9 IF Beryl can push into area.

A low-end risk for additional tropical development will also be in play W of Yucatan in the southern most portions of the Gulf of Mexico over the weekend. This is not favored to directly impact Houston.

# Hurricane Beryl Outlook

SAT June 29th, 2024 – WED July 3rd

FORECASTER: Kipper

UPDATED: 6/29/24 11:30 PM ET

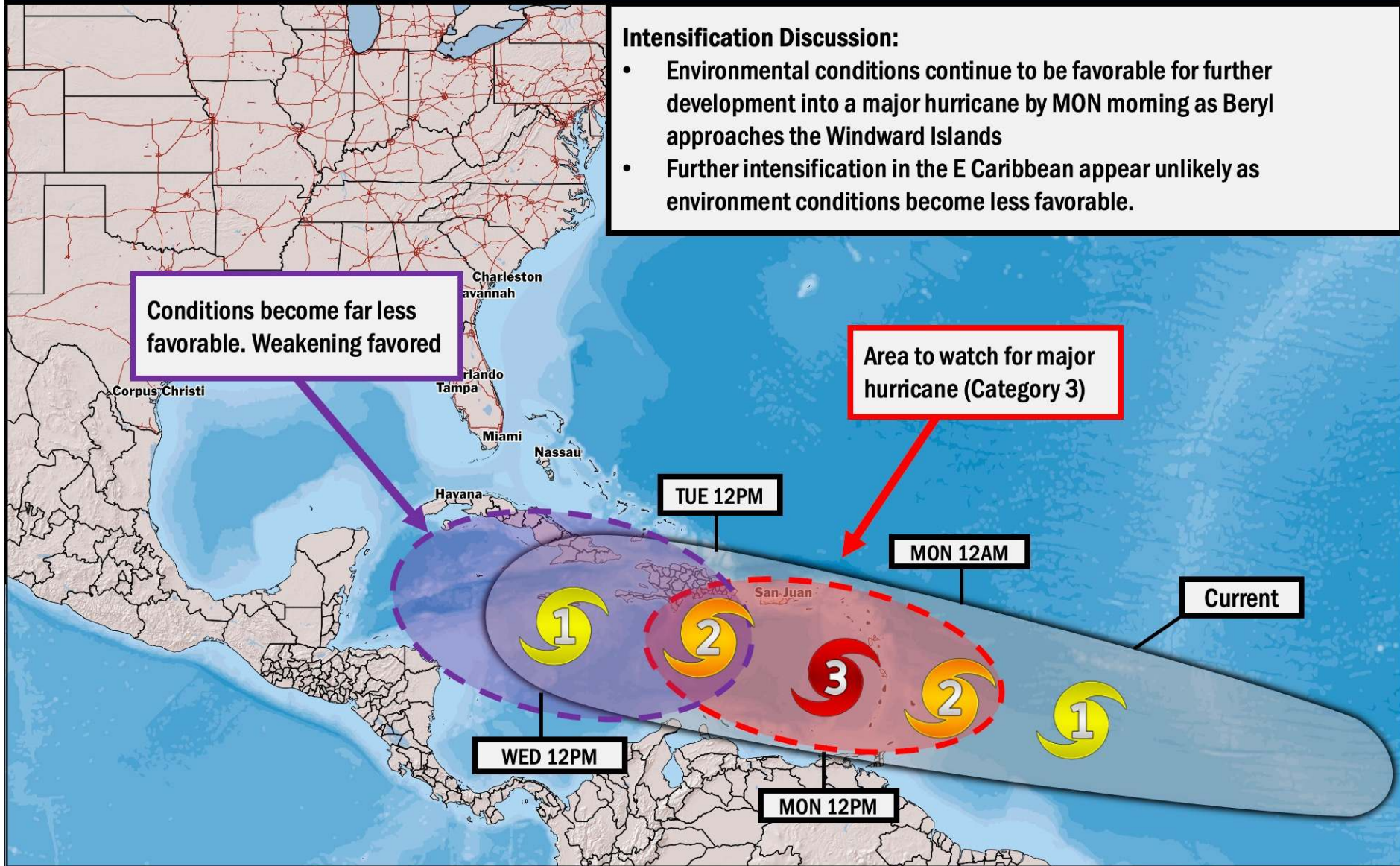


## Intensification Discussion:

- Environmental conditions continue to be favorable for further development into a major hurricane by MON morning as Beryl approaches the Windward Islands
- Further intensification in the E Caribbean appear unlikely as environment conditions become less favorable.

Conditions become far less favorable. Weakening favored

Area to watch for major hurricane (Category 3)



# Houston Pilots Visibility Chart (miles)



Time	Sat 2pm	Sat 3pm	Sat 4pm	Sat 5pm	Sat 6pm	Sat 7pm	Sat 8pm	Sat 9pm	Sat 10pm	Sat 11pm	Sun 12am	Sun 1am	Sun 2am	Sun 3am	Sun 4am	Sun 5am	Sun 6am	Sun 7am	Sun 8am	Sun 9am	Sun 10am	Sun 11am	Sun 12pm	Sun 1pm
610 Bridge	10	10	10	10	10	10	10	10	10	10	10	10	10	10	10	10	10	7	10	10	10	10	10	10
Kinder 1	10	10	10	10	10	10	10	10	10	10	10	10	10	10	10	10	10	9	10	10	10	10	10	10
Greens Bayou	10	10	10	10	10	10	10	10	10	10	10	10	10	10	10	10	10	7	10	10	10	10	10	10
Shell Crude	10	10	10	10	10	10	10	10	10	10	10	10	10	10	10	10	10	9	10	10	10	10	10	10
Lynchburg Ferries	10	10	10	10	10	10	10	10	10	10	10	10	10	10	10	10	10	7	10	10	10	10	10	10
Exxon 3	10	10	10	10	10	10	10	10	10	10	10	10	10	10	10	10	10	9	10	10	10	10	10	10
Morgans Point	10	10	10	10	10	10	10	10	10	10	10	10	10	10	10	10	10	9	10	10	10	10	10	10
75/76	10	10	10	10	10	10	10	10	10	10	10	10	10	10	10	10	10	9	10	10	10	10	10	10
63/64	10	10	10	10	10	10	10	10	10	10	10	10	10	10	10	10	10	9	10	10	10	10	10	10
51/52	10	10	10	10	10	10	10	10	10	10	10	10	10	10	10	10	10	9	10	10	10	10	10	10
37/38	10	10	10	10	10	10	10	10	10	10	10	10	10	10	10	10	10	9	10	10	10	10	10	10
25/26	10	10	10	10	10	10	10	10	10	10	10	10	10	10	10	10	10	9	10	10	10	10	10	10
11/12	10	10	10	10	10	10	10	10	10	10	10	10	10	10	10	10	10	9	10	10	10	10	10	10
1 & 2 Bravo	10	10	10	10	10	10	10	10	10	10	10	10	10	10	10	10	10	7	10	10	10	10	10	10

**NOTE: This is automated data that may/may not agree with the official BAM thinking that's found on the daily slides or special visibility report slides. This data should be used as a guide only**

# Houston Pilots Wind Chart



## Forecast Confidence



Sustained wind 13 Knots  
Gusts 18 Knots  
Wind from the N

## Example

WS: 13  
G:18  
N

Time Knots	Sat 2pm	Sat 3pm	Sat 4pm	Sat 5pm	Sat 6pm	Sat 7pm	Sat 8pm	Sat 9pm	Sat 10pm	Sat 11pm	Sun 12am	Sun 1am	Sun 2am	Sun 3am	Sun 4am	Sun 5am	Sun 6am	Sun 7am	Sun 8am	Sun 9am	Sun 10am	Sun 11am	Sun 12pm	Sun 1pm
610 Bridge	8 16 SSE	9 17 SSE	9 17 SSE	9 17 SSE	9 17 SSE	9 17 SSE	9 17 SSE	7 15 SSE	7 14 SSE	6 12 SSE	5 11 SSE	5 10 SSE	4 9 SE	3 8 SSE	3 7 SSE	3 6 SSE	2 5 SSE	2 5 SSE	2 5 S	3 6 S	3 6 S	3 8 SSE	4 8 SE	5 10 SE
Kinder 1	8 16 SSE	9 17 SSE	9 17 SSE	9 17 SSE	9 17 SSE	9 17 SSE	9 17 SSE	7 15 SSE	7 13 SSE	6 12 SSE	5 11 SSE	5 10 SSE	4 9 SE	3 8 SSE	3 7 SSE	3 6 SSE	2 5 SSE	2 5 SSE	2 5 S	3 6 S	3 6 S	3 8 SSE	4 8 SE	5 10 SE
Greens Bayou	8 16 SSE	9 17 SSE	9 17 SE	9 17 SE	9 17 SE	9 17 SE	8 16 SSE	7 14 SSE	7 13 SSE	5 12 SSE	5 11 SSE	5 10 SSE	4 9 SE	3 8 SSE	3 7 SSE	3 6 SSE	2 5 SSE	2 5 SSE	2 5 S	2 5 S	3 6 S	3 8 SSE	4 8 SE	5 10 ESE
Shell Crude	8 16 SSE	9 17 SE	9 17 SE	9 17 SE	9 17 SE	9 17 SSE	8 16 SSE	7 14 SSE	7 13 SSE	6 12 SSE	5 11 SSE	5 10 SSE	4 9 SE	3 8 SSE	3 7 SSE	3 6 SSE	2 5 SSE	2 5 SSE	2 5 S	2 5 S	3 6 SE	3 8 SE	4 8 SE	5 10 ESE
Lynchburg Ferries	9 16 SSE	9 17 SSE	9 17 SSE	9 17 SSE	9 17 SSE	9 17 SSE	8 16 SSE	7 14 SSE	6 13 SSE	5 12 SSE	5 11 SSE	4 10 SSE	3 9 SSE	3 8 SSE	3 7 SSE	2 6 SSE	2 5 SSE	2 5 S	2 5 S	2 5 S	3 6 S	3 8 SSE	4 8 SE	5 10 ESE
Exxon 3	11 17 SSE	11 18 SSE	12 18 SSE	12 18 SSE	13 18 SSE	13 18 SSE	12 17 SSE	11 16 SSE	11 15 SSE	10 13 SSE	9 11 SSE	9 11 SSE	8 11 SSE	7 11 SSE	6 10 SSE	5 8 SSE	5 6 SSE	4 6 SSE	4 6 SSE	4 7 SSE	4 8 SSE	5 8 SSE	5 9 SSE	6 11 SSE
Morgans Point	11 17 SSE	11 18 SSE	11 18 SSE	12 18 SSE	12 18 SSE	12 17 SSE	12 16 SSE	11 15 SSE	11 13 SSE	10 11 SSE	9 9 SSE	9 8 SSE	8 7 SSE	7 7 SSE	5 10 SSE	5 8 SSE	4 7 SSE	4 7 SSE	4 7 SSE	4 8 SSE	5 8 SSE	5 8 SSE	5 9 SSE	6 11 SSE
75/76	11 17 SSE	11 18 SSE	12 18 SSE	12 18 SSE	13 18 SSE	13 18 SSE	13 18 SSE	13 17 SSE	12 16 SSE	11 15 SSE	11 14 SSE	10 13 SSE	9 12 SSE	9 11 SSE	8 10 SSE	7 9 SSE	6 8 SSE	5 8 SSE	5 8 SSE	5 8 SSE	5 9 SSE	5 10 SSE	5 10 SSE	6 11 SSE
63/64	11 17 SSE	11 18 SSE	12 18 SSE	12 18 SSE	13 18 SSE	13 17 SSE	12 16 SSE	11 15 SSE	11 14 SSE	11 13 SSE	11 9 SSE	11 9 SSE	11 8 SSE	10 7 SSE	10 6 SSE	9 5 SSE	9 5 SSE	8 5 SSE	8 5 SSE	8 5 SSE	9 5 SSE	9 5 SSE	10 6 SSE	11 7 SSE
51/52	10 16 SSE	10 17 SSE	11 17 SSE	11 17 SSE	12 17 SSE	12 17 SSE	12 16 SSE	12 15 SSE	12 14 SSE	11 13 SSE	11 11 SSE	11 10 SSE	10 9 SSE	9 8 SSE	9 7 SSE	8 6 SSE	8 5 SSE	8 5 SSE	8 5 SSE	8 5 SSE	8 5 SSE	9 6 SSE	9 6 SSE	10 7 SSE
37/38	10 16 SSE	10 16 SSE	11 17 SSE	11 17 SSE	12 17 SSE	12 17 SSE	12 16 SSE	12 15 SSE	12 14 SSE	11 13 SSE	11 11 SSE	11 10 SSE	10 9 SSE	9 8 SSE	8 7 SSE	7 6 SSE	7 5 SSE	7 5 SSE	6 5 SSE	6 5 SSE	6 5 SSE	6 6 SSE	6 6 SSE	7 7 SSE
25/26	10 15 SSE	10 16 SSE	11 16 SSE	11 17 SSE	11 17 SSE	11 17 SSE	11 16 SSE	11 15 SSE	11 14 SSE	11 13 SSE	11 11 SSE	11 10 SSE	10 9 SSE	9 8 SSE	8 7 SSE	7 6 SSE	6 5 SSE	6 5 SSE	6 5 SSE	6 5 SSE	6 5 SSE	6 6 SSE	6 6 SSE	7 7 SSE
11/12	10 15 SSE	10 15 SSE	10 16 SSE	11 17 SSE	11 17 SSE	11 17 SSE	11 16 SSE	11 15 SSE	11 14 SSE	11 13 SSE	11 10 SSE	11 9 SSE	11 8 SSE	10 7 SSE	10 6 SSE	10 5 SSE	10 5 SSE	9 5 SSE	9 5 SSE	9 5 SSE	9 5 SSE	9 6 SSE	9 6 SSE	10 7 SSE
1 & 2 Bravo	9 14 SSE	10 15 SE	10 15 SE	11 17 SE	11 17 SE	11 17 SE	11 16 SE	11 15 SE	11 14 SE	11 13 SE	11 12 SSE	11 11 SSE	10 9 SSE	9 8 SSE	8 7 SSE	7 6 SSE	6 5 SSE	6 5 SSE	6 5 SSE	6 5 SSE	6 5 SSE	6 6 SSE	6 6 SSE	7 7 SSE

NOTE: This is automated data that may/may not agree with the official BAM thinking that's found on the daily slides. This data should be used as a guide only.

# Houston Pilots: Sun. 6/30/2024



## Forecast Discussion

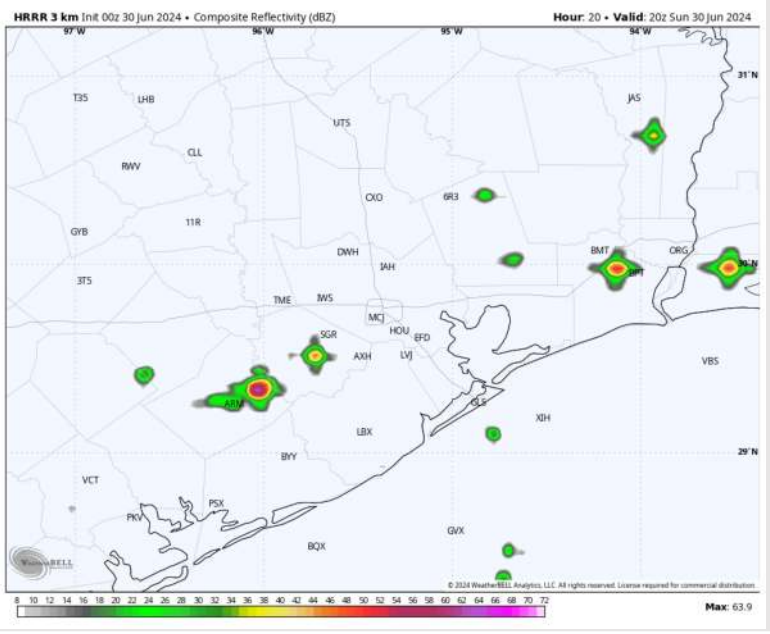
**Precip:** Isolated chances of a pop-up downpour between 10AM – 6PM (20% chances), with coverage moving N of Stations after 6 PM.

**Wind:** Winds out of the S/SE throughout the day. **N of Morgan's Point:** Winds at 3-8 kts for the entire day. **S of Morgan's Point:** Winds at 11-16 kts for the majority of the day, with a brief calming to 5-10 kts from 10 AM to 4 PM.

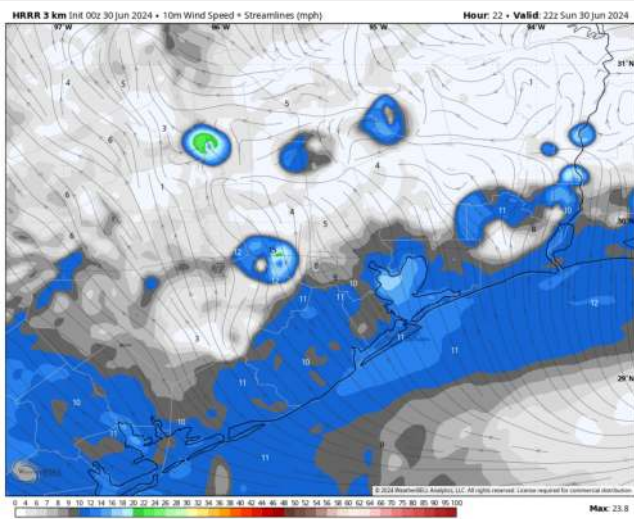
**High Temps:** **N of Morgan's Point:** Mid 90s F. **S of Morgan's Point:** Upper 80s F

**Visibility:** Not anticipating any fog concerns for today.

## Precip Image: 3 PM CT

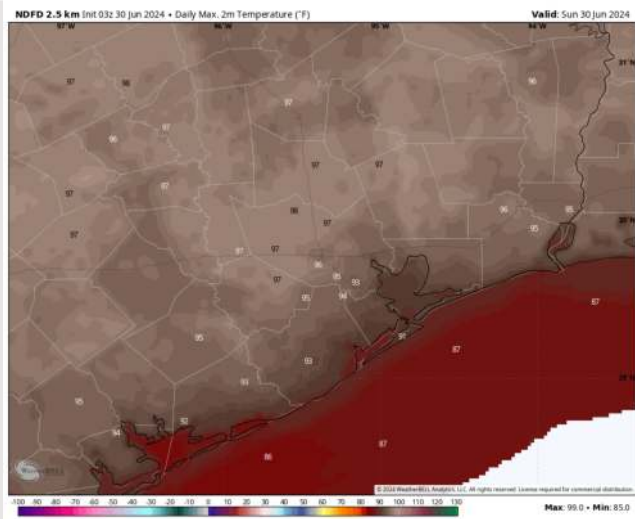


## Wind Speed: 5 PM CT



Wind Speed:  
5 PM CT

## High Temps Today



High Temps  
Today

# Houston Pilots: Mon. 7/1/2024



## Forecast Discussion

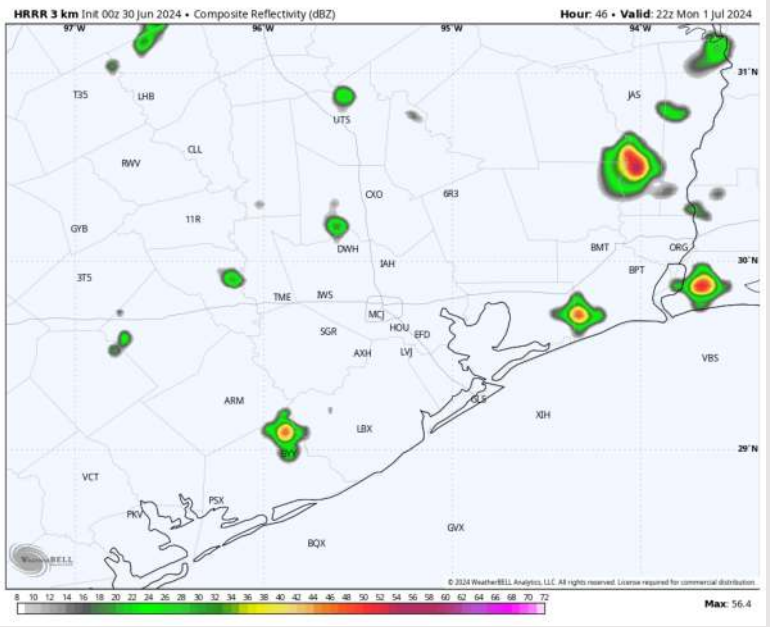
**Precip:** Hit/Miss (10%) light showers will be possible from 4PM – 9PM. Not favoring storms at this time but will continue to monitor trends for late night storm cluster.

**Wind:** Winds expected gradually work clockwise, settling out of the NW from 6 AM through 2 PM. After 2 PM, winds become variable through remainder of Monday. **N of Morgan's Point:** Winds at 2-7 kts for the entire day. **S of Morgan's Point:** Favoring winds 5-10 kts through 5 PM before slightly increasing to 9-14 kts the rest of MON.

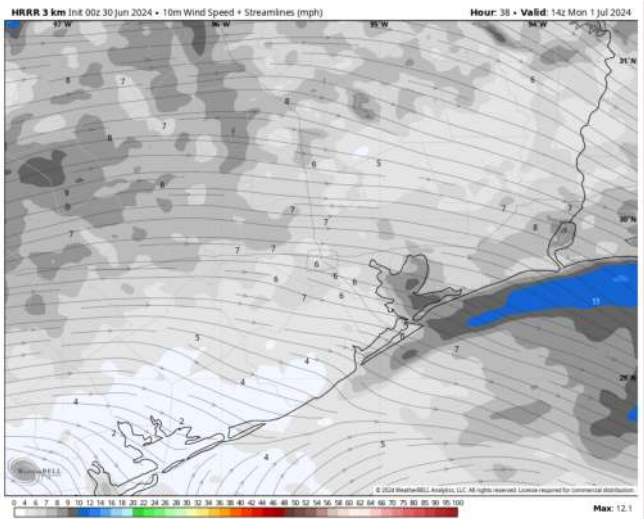
**High Temps:** **N of Morgan's Point:** Upper 90s F. **S of Morgan's Point:** Low 90s F

**Visibility:** Not favoring any fog concerns for Monday.

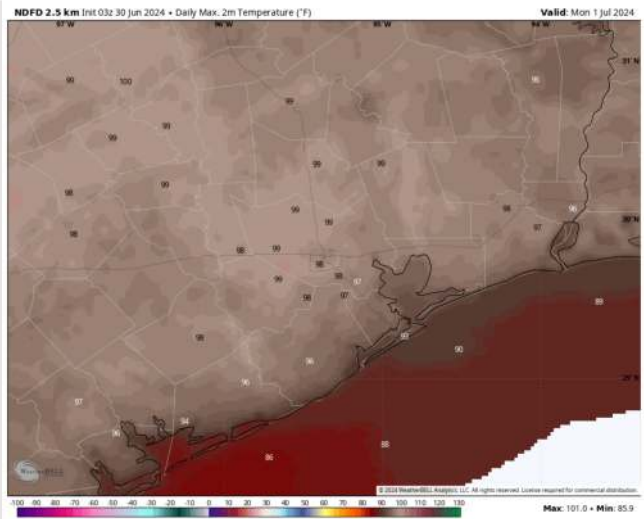
## Precip Image: 5 PM CT



Wind Speed  
9 AM CT



High Temps  
Monday



## Forecast Discussion

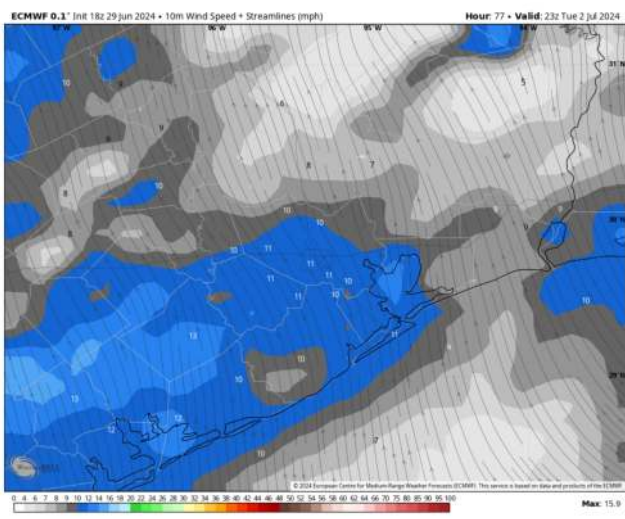
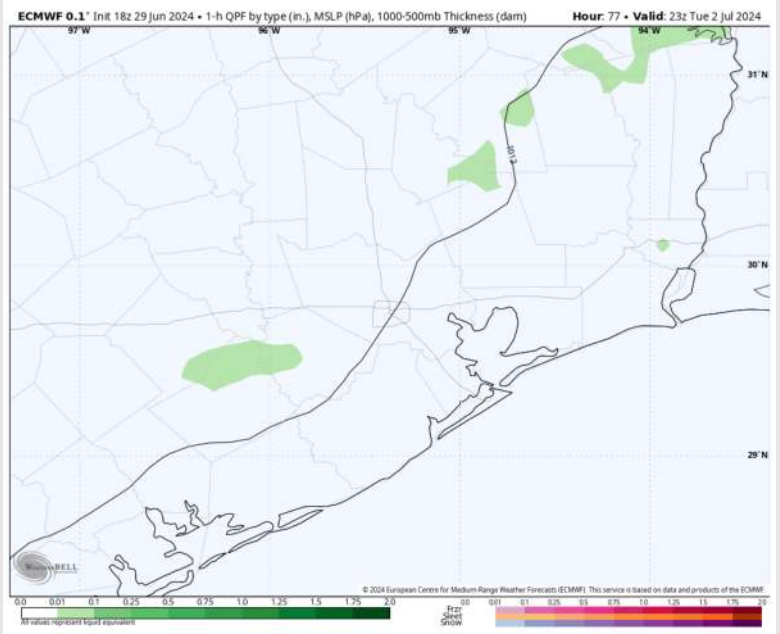
**Precip:** Isolated showers/thunderstorms (10-20%) will be possible from 3-7 PM, although majority of coverage will remain north of stations. Dry conditions favored after 7 PM.

**Wind:** Winds will begin out of the SW, gradually working clockwise throughout TUE AM. By 1 PM, winds will shift to being out of the SE and continue for the PM hours TUE. **N of Morgan's Point:** Winds will be at 4-9 kts throughout TUE. **S of Morgan's Point:** Winds at 7-12 kts outside of a brief calming to 4-9 kts from 9 AM to 3 PM.

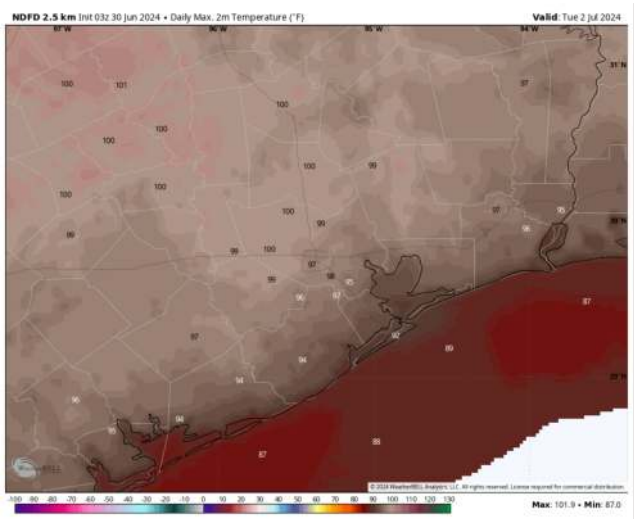
**High Temps:** **N of Morgan's Point:** Upper 90s F. **S of Morgan's Point:** Low 90s F

**Visibility:** Not anticipating any fog concerns for Tuesday.

## Precip Image: 6 PM CT



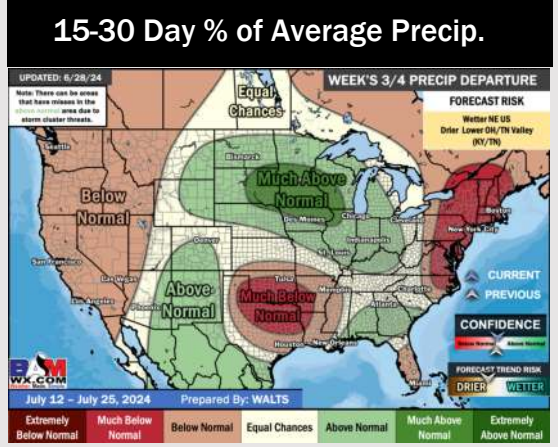
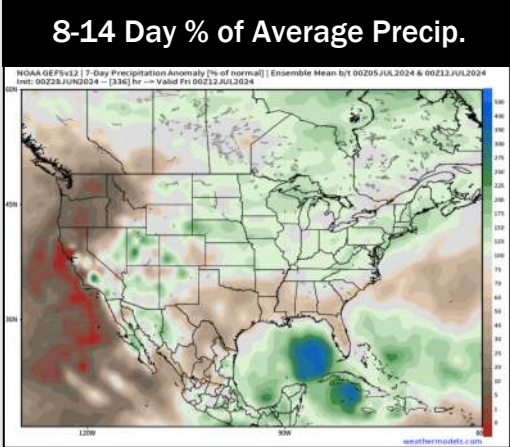
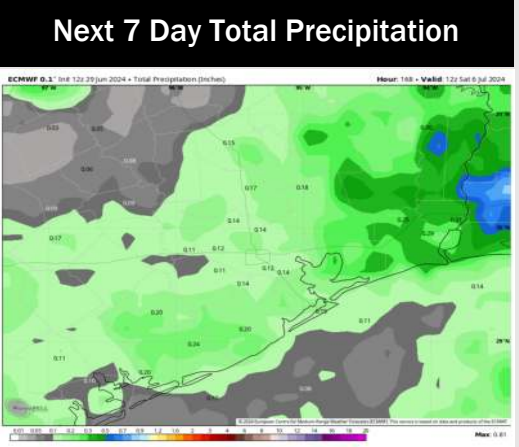
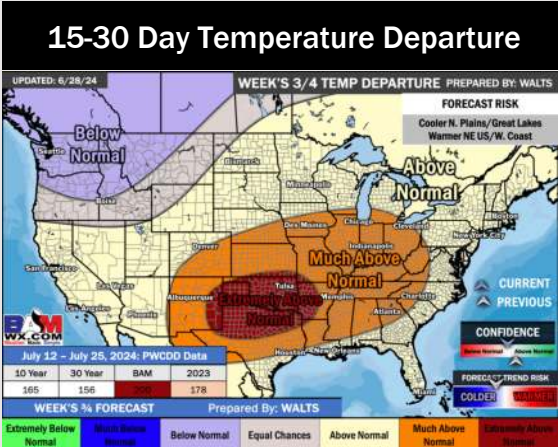
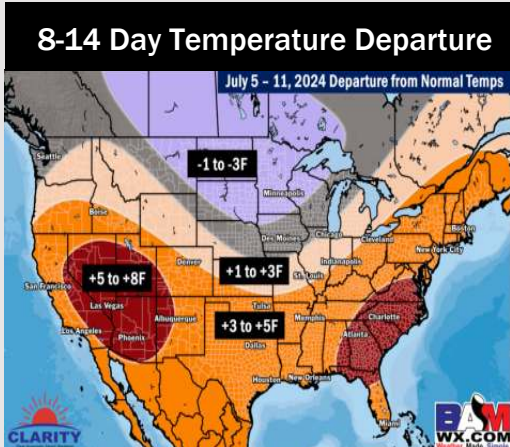
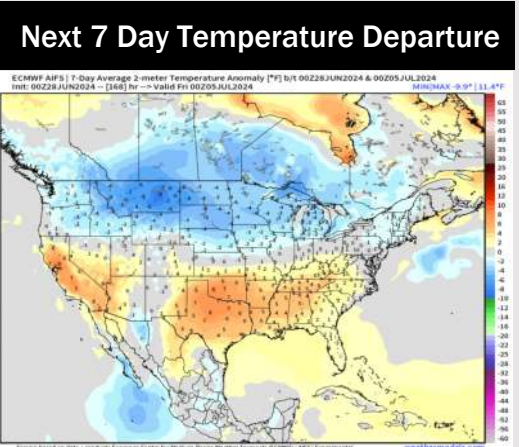
Wind Speed:  
6 PM CT



High Temps  
Tuesday



# Houston Pilots: 6/30/24



- Temps are expected to be above normal for the week 1 timeframe. Only scattered shower/storm risks are favored throughout the Week 1 period.
- Well below normal precipitation chances are at play during the week 2 timeframe, with the risk of tropical activity needing to be monitored. However, confidence is low in this development. Temps are expected to be above normal for week 2.
- Below normal chances for precipitation and above normal temperatures are favored in the weeks 3/4 timeframe.