

Houston Pilots Forecast Package



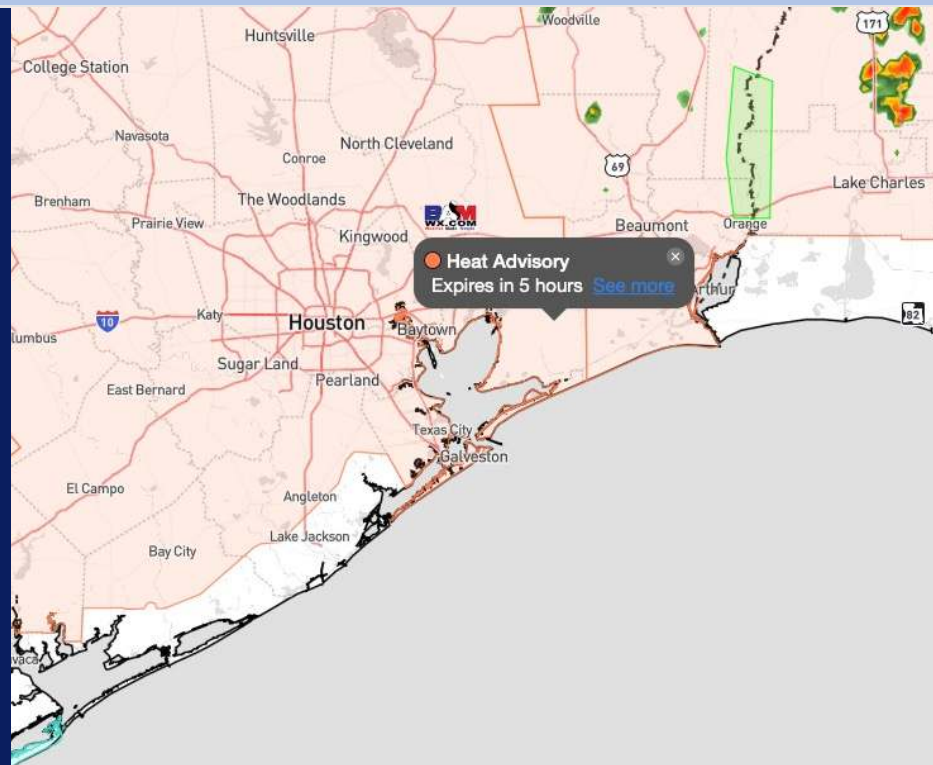
Updated: 1:55 PM CT

Saturday, June 29, 2024

Forecaster: Jonathan Kipper

Weather Headlines

- Isolated rainfall chances will continue throughout the early parts of next week. Favoring more dry time then not!
- Winds will gradually calm throughout the weekend.
- **Monitoring Tropical Storm Beryl developing E of Lesser Antilles. See graphics below for latest thinking!**



Current Radar: 1:45 PM CT

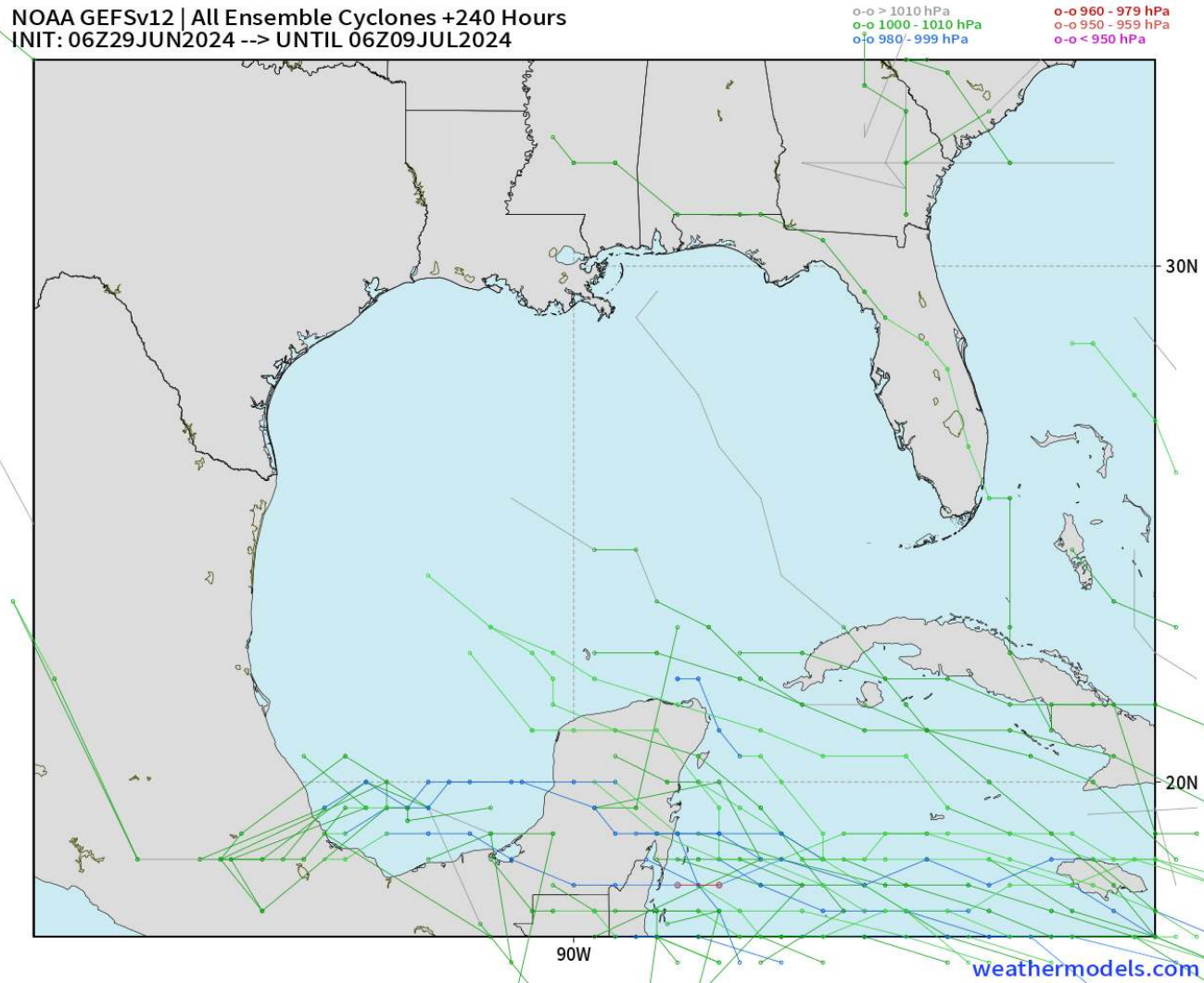


As always, please do not hesitate to reach out to us with any forecast questions via the chat option on Clarity or our on-call number, **(317)-560-8122** press 1 for forecast questions.

Houston Pilots Tropical Update

American Model Next 10 Days - Tropical Tracks

NOAA GEFSv12 | All Ensemble Cyclones +240 Hours
INIT: 06Z29JUN2024 --> UNTIL 06Z09JUL2024



Tropical Storm Beryl has developed E of the Lesser Antilles. (See Next Slide for More Info). Timing for Gulf of Mexico impacts will be July 7 – 9 IF Beryl can push into area.

A low-end risk for additional tropical development will also be in play W of Yucatan in the southern most portions of the Gulf of Mexico over the weekend. This is not favored to directly impact Houston.

Tropical Storm Beryl Outlook

SAT June 29th, 2024 – WED July 3rd

FORECASTER: Kipper

UPDATED: 6/29/24 2:50 PM ET

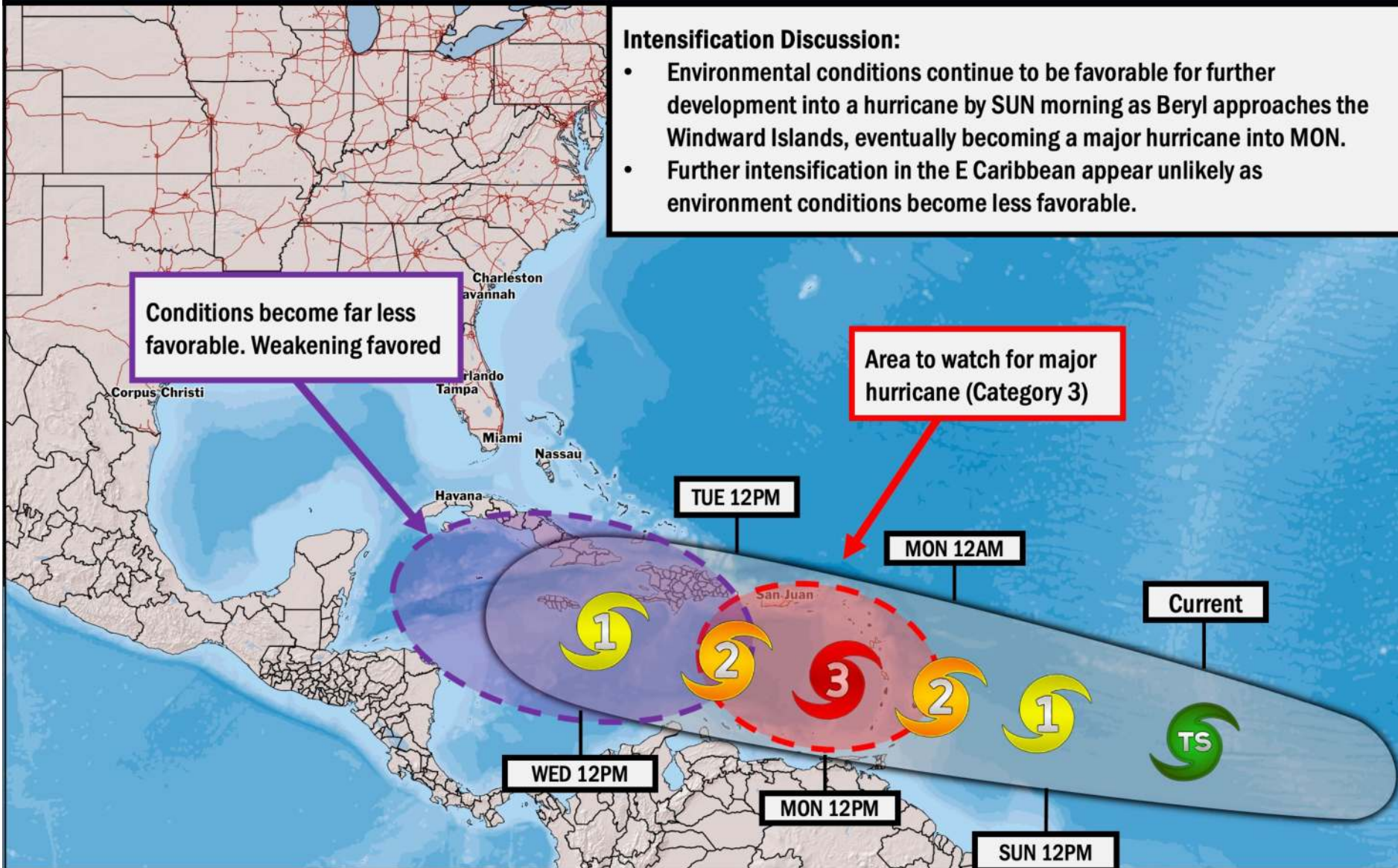


Intensification Discussion:

- Environmental conditions continue to be favorable for further development into a hurricane by SUN morning as Beryl approaches the Windward Islands, eventually becoming a major hurricane into MON.
- Further intensification in the E Caribbean appear unlikely as environment conditions become less favorable.

Conditions become far less favorable. Weakening favored

Area to watch for major hurricane (Category 3)



Houston Pilots Visibility Chart (miles)



Forecast Confidence

Above
Normal

Below
Normal

Time	Sat 2pm	Sat 3pm	Sat 4pm	Sat 5pm	Sat 6pm	Sat 7pm	Sat 8pm	Sat 9pm	Sat 10pm	Sat 11pm	Sun 12am	Sun 1am	Sun 2am	Sun 3am	Sun 4am	Sun 5am	Sun 6am	Sun 7am	Sun 8am	Sun 9am	Sun 10am	Sun 11am	Sun 12pm	Sun 1pm
610 Bridge	10	10	10	10	10	10	10	10	10	10	10	10	10	10	10	10	10	7	10	10	10	10	10	10
Kinder 1	10	10	10	10	10	10	10	10	10	10	10	10	10	10	10	10	10	9	10	10	10	10	10	10
Greens Bayou	10	10	10	10	10	10	10	10	10	10	10	10	10	10	10	10	10	7	10	10	10	10	10	10
Shell Crude	10	10	10	10	10	10	10	10	10	10	10	10	10	10	10	10	10	9	10	10	10	10	10	10
Lynchburg Ferries	10	10	10	10	10	10	10	10	10	10	10	10	10	10	10	10	10	7	10	10	10	10	10	10
Exxon 3	10	10	10	10	10	10	10	10	10	10	10	10	10	10	10	10	10	9	10	10	10	10	10	10
Morgans Point	10	10	10	10	10	10	10	10	10	10	10	10	10	10	10	10	10	9	10	10	10	10	10	10
75/76	10	10	10	10	10	10	10	10	10	10	10	10	10	10	10	10	10	9	10	10	10	10	10	10
63/64	10	10	10	10	10	10	10	10	10	10	10	10	10	10	10	10	10	9	10	10	10	10	10	10
51/52	10	10	10	10	10	10	10	10	10	10	10	10	10	10	10	10	10	9	10	10	10	10	10	10
37/38	10	10	10	10	10	10	10	10	10	10	10	10	10	10	10	10	10	9	10	10	10	10	10	10
25/26	10	10	10	10	10	10	10	10	10	10	10	10	10	10	10	10	10	9	10	10	10	10	10	10
11/12	10	10	10	10	10	10	10	10	10	10	10	10	10	10	10	10	10	9	10	10	10	10	10	10
1 & 2 Bravo	10	10	10	10	10	10	10	10	10	10	10	10	10	10	10	10	10	7	10	10	10	10	10	10

NOTE: This is automated data that may/may not agree with the official BAM thinking that’s found on the daily slides or special visibility report slides. This data should be used as a guide only

Houston Pilots Wind Chart



Forecast Confidence



Sustained wind 13 Knots
Gusts 18 Knots
Wind from the N

Example

WS: 13
G:18
N

Time Knots	Sat 2pm	Sat 3pm	Sat 4pm	Sat 5pm	Sat 6pm	Sat 7pm	Sat 8pm	Sat 9pm	Sat 10pm	Sat 11pm	Sun 12am	Sun 1am	Sun 2am	Sun 3am	Sun 4am	Sun 5am	Sun 6am	Sun 7am	Sun 8am	Sun 9am	Sun 10am	Sun 11am	Sun 12pm	Sun 1pm
610 Bridge	8	9	9	9	9	9	9	7	7	6	5	5	4	3	3	3	2	2	2	3	3	3	4	5
	16	17	17	17	17	17	17	15	14	12	11	10	9	8	7	6	5	5	5	6	6	8	8	10
	SSE	SSE	SSE	SSE	SSE	SSE	SSE	SSE	SSE	SSE	SSE	SSE	SSE	SE	SSE	SSE	SSE	SSE	S	S	S	SSE	SE	SE
Kinder 1	8	9	9	9	9	9	9	7	7	6	5	5	4	3	3	3	2	2	2	3	3	3	4	5
	16	17	17	17	17	17	17	15	13	12	11	10	9	8	7	6	5	5	5	6	6	8	8	10
	SSE	SSE	SSE	SSE	SSE	SSE	SSE	SSE	SSE	SSE	SSE	SSE	SSE	SE	SSE	SSE	SSE	SE	S	S	S	SSE	SE	SE
Greens Bayou	8	9	9	9	9	9	8	7	7	5	5	5	4	3	3	3	2	2	2	2	3	3	4	5
	16	17	17	17	17	17	16	14	13	12	11	10	9	8	7	6	5	5	5	5	6	8	8	10
	SSE	SSE	SE	SE	SE	SE	SSE	SSE	SSE	SSE	SSE	SSE	SSE	SE	SSE	SSE	SSE	SE	S	S	S	SSE	SE	ESE
Shell Crude	8	9	9	9	9	9	8	7	7	6	5	5	4	3	3	3	2	2	2	2	3	3	4	5
	16	17	17	17	17	17	16	14	13	12	11	10	9	8	7	6	5	5	5	6	6	8	8	10
	SSE	SE	SE	SE	SE	SE	SSE	SSE	SSE	SSE	SSE	SSE	SSE	SSE	S	SSE	SSE	SSE	S	S	S	SE	SE	ESE
Lynchburg Ferries	9	9	9	9	9	9	8	7	6	5	5	4	3	3	3	2	2	1	2	2	3	3	4	5
	16	17	17	17	17	17	16	14	13	12	11	10	9	8	7	6	5	5	5	5	6	8	8	10
	SSE	SSE	SSE	SSE	SSE	SSE	SSE	SSE	SSE	SSE	SSE	SSE	S	SSE	S	SSE	SSE	SSE	S	S	S	SSE	SE	ESE
Exxon 3	11	11	12	12	13	13	12	11	11	10	9	9	8	7	6	5	5	4	4	4	4	5	5	6
	17	18	18	18	18	18	17	16	16	15	13	13	11	11	10	8	8	6	6	7	8	9	11	
	SSE	SSE	SSE	SSE	SSE	SSE	SSE	SSE	SSE	SSE	SSE	SSE	S	SSE	S	S	S	S	S	S	SSE	SE	SE	SE
Morgans Point	11	11	11	12	12	12	12	11	11	10	9	9	8	7	7	5	5	4	4	4	5	5	5	6
	17	18	18	18	18	17	17	16	16	15	13	13	11	11	10	8	8	7	7	8	8	9	11	
	SSE	SSE	SSE	SSE	SSE	SSE	SSE	SSE	SSE	SSE	SSE	SSE	SSE	SSE	S	S	S	S	S	S	SSE	SE	SE	SE
75/76	11	11	12	12	13	13	13	13	12	11	11	10	9	9	8	7	6	5	5	5	5	5	5	6
	17	18	18	18	18	18	18	18	17	16	15	14	13	12	11	10	9	8	8	8	9	9	10	11
	SSE	SSE	SSE	SSE	SSE	SSE	SSE	SSE	SSE	SSE	SSE	SSE	SSE	SSE	S	S	S	S	S	S	SSE	SE	SE	SE
63/64	11	11	11	12	12	13	13	12	12	11	11	11	9	9	8	7	6	6	5	5	5	5	6	6
	17	18	18	18	18	18	17	18	17	16	15	14	13	12	11	10	9	8	8	8	9	9	10	11
	SSE	SSE	SSE	SSE	SSE	SSE	SSE	SSE	SSE	SSE	SSE	SSE	SSE	SSE	S	S	S	S	S	S	SSE	ESE	SE	SE
51/52	10	11	11	11	12	12	12	12	12	11	11	11	10	9	9	7	7	6	6	5	6	6	6	7
	16	17	17	17	17	17	17	17	17	16	16	15	14	13	12	11	10	9	9	8	9	9	10	11
	SSE	SSE	SSE	SSE	SSE	SSE	SSE	SSE	SSE	SSE	SSE	SSE	SSE	SSE	S	S	S	S	S	S	SE	SE	SE	SE
37/38	10	10	11	11	11	12	12	12	12	11	11	11	10	9	9	8	7	7	6	6	6	6	6	7
	16	16	17	17	17	17	17	17	17	16	16	15	14	13	12	11	10	9	9	9	9	9	10	11
	SSE	SSE	SSE	SE	SE	SSE	SSE	SSE	SSE	SSE	SSE	SSE	SSE	SSE	S	S	S	S	S	SSE	SE	SE	SE	ESE
25/26	10	10	11	11	11	11	11	11	11	11	11	11	10	9	9	8	7	7	6	6	6	6	7	7
	15	16	16	17	17	17	17	17	17	16	15	15	14	13	12	11	10	10	9	9	9	10	10	11
	SSE	SSE	SE	SE	SE	SE	SSE	SSE	SSE	SSE	SSE	SSE	SSE	SSE	S	S	S	S	SSE	SSE	SE	SE	SE	ESE
11/12	10	10	10	11	11	11	11	11	11	10	10	9	9	8	8	7	7	6	6	5	6	6	7	7
	15	15	16	17	17	17	17	17	17	16	15	14	14	13	12	11	10	10	9	9	9	9	10	11
	SSE	SSE	SSE	SE	SE	SE	SE	SE	SSE	SSE	SSE	SSE	SSE	SSE	S	S	S	S	SSE	SSE	SE	SE	SE	ESE
1 & 2 Bravo	9	10	10	11	11	12	12	12	13	12	12	11	11	10	9	9	8	7	7	7	7	7	7	7
	14	15	15	17	17	17	17	18	18	17	17	16	15	14	13	13	11	11	10	10	10	10	10	10
	SSE	SE	SE	SE	SE	SE	SE	SE	SE	SSE	SSE	SSE	SSE	SSE	S	S	S	SSE	SSE	SSE	SE	ESE	ESE	ESE

NOTE: This is automated data that may/may not agree with the official BAM thinking that's found on the daily slides.
This data should be used as a guide only.

Houston Pilots: sat. 6/29/2024

Forecast Discussion

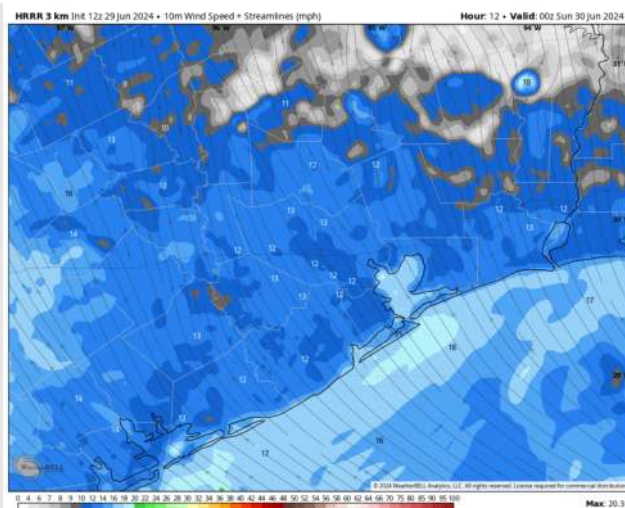
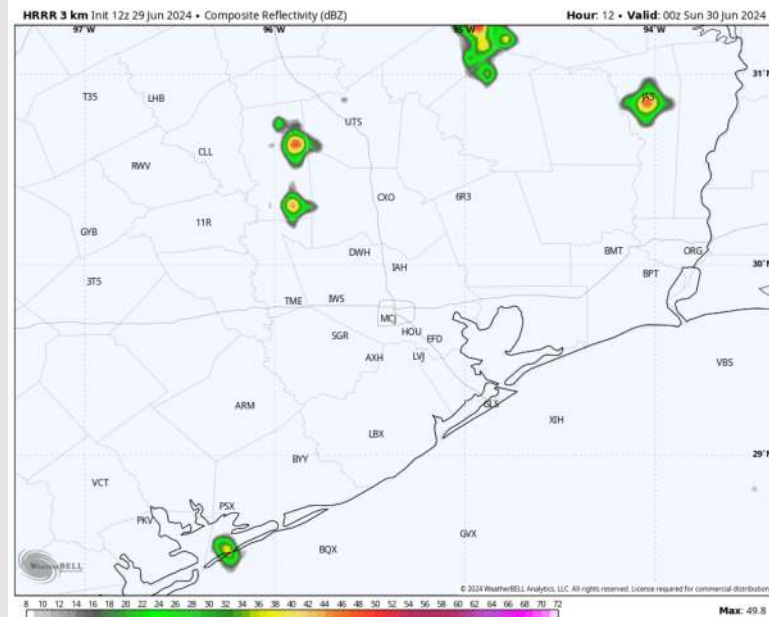
Precip: Isolated showers/thunderstorms (10-20%) will continue to be possible through 7 PM, although majority of coverage will remain north of stations. Dry conditions favored after 7 PM.

Wind: Winds will be out of the S/SE for the remaining afternoon/evening hours. **N of Morgan's Point:** Winds will be at 7-12 kts for the remainder of the day. **S of Morgan's Point:** Winds at 11-16 kts for the remainder of the day.

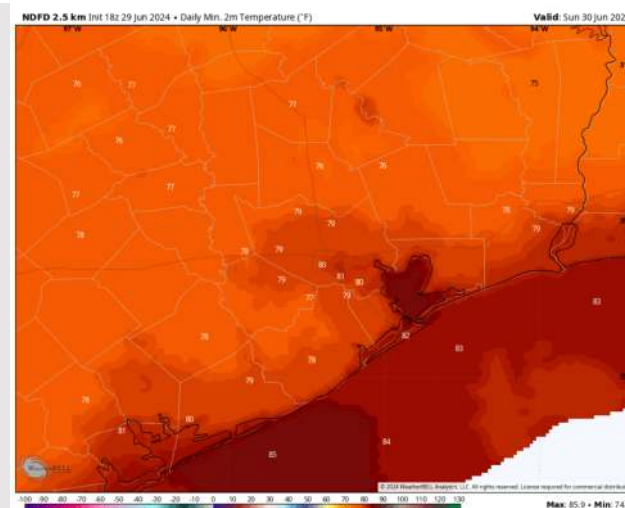
Low Temps: **N of Morgan's Point:** Low 80s F. **S of Morgan's Point:** Mid 80s F

Visibility: Not anticipating any fog concerns for today.

Precip Image: 7 PM CT



Wind Speed:
7 PM CT



Low Temps
SUN AM

Houston Pilots: Sun. 6/30/2024

Forecast Discussion

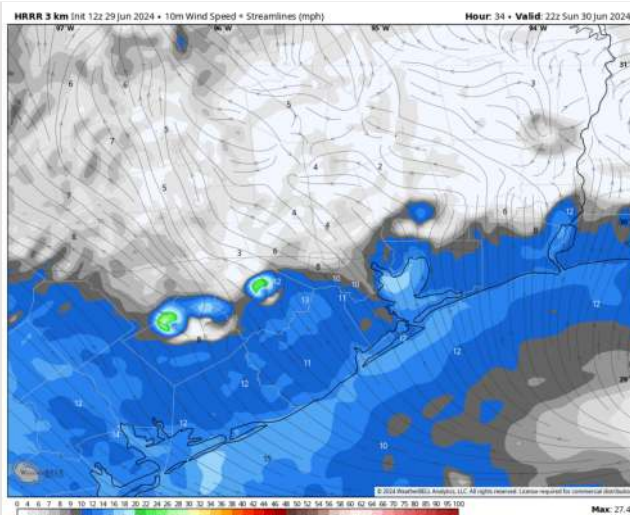
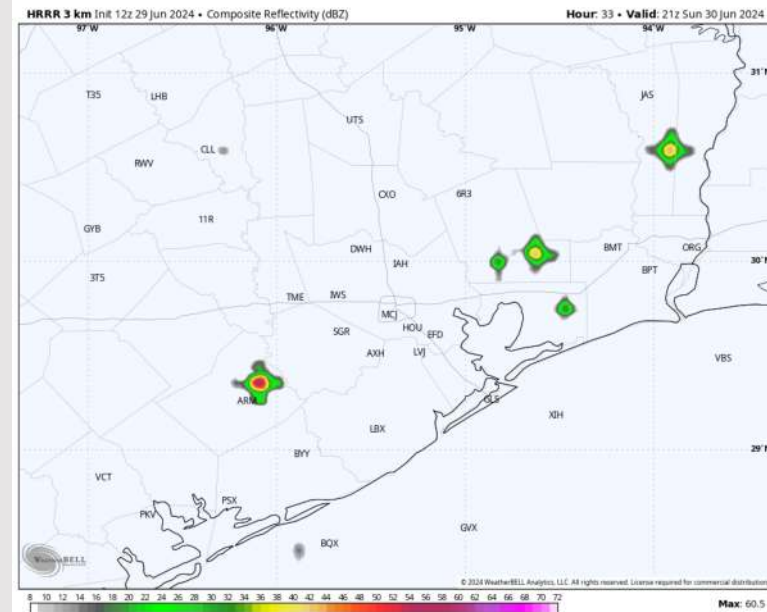
Precip: Isolated chances of a pop-up downpour between 10AM – 6PM (20% chances).

Wind: Winds out of the S/SE throughout the day. **N of Morgan's Point:** Winds at 3-8 kts through the day. **S of Morgan's Point:** Winds at 11-16 kts for the majority of the day, with a brief calming to 5-10 kts from 10 AM to 3 PM.

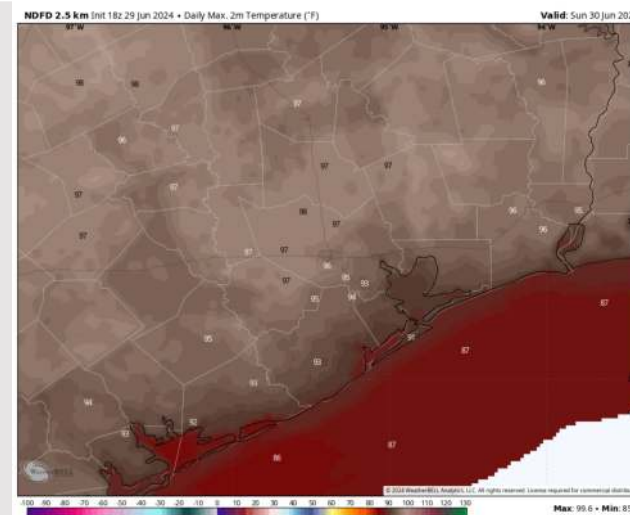
High Temps: **N of Morgan's Point:** Mid 90s F. **S of Morgan's Point:** Upper 80s F

Visibility: Not anticipating any fog concerns for Sunday.

Precip Image: 4 PM CT



Wind Speed:
5 PM CT



High Temps
Sunday

Houston Pilots: Mon. 7/1/2024

Forecast Discussion

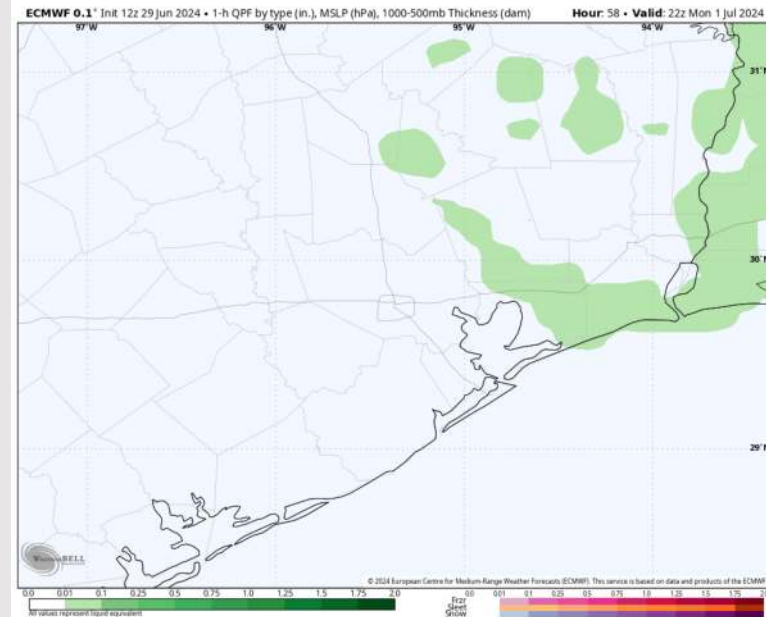
Precip: Hit/Miss (10%) light showers will be possible from 3PM – 8PM. Not favoring storms at this time but will continue to monitor trends for late night storm cluster.

Wind: Winds expected gradually work clockwise, settling out of the NW from 4-11 AM. After 11 AM, winds become calm and variable overall through remainder of Monday. **N of Morgan's Point:** Winds at 2-7 kts for the entire day. **S of Morgan's Point:** Favoring winds 5-10 kts throughout the day on Monday

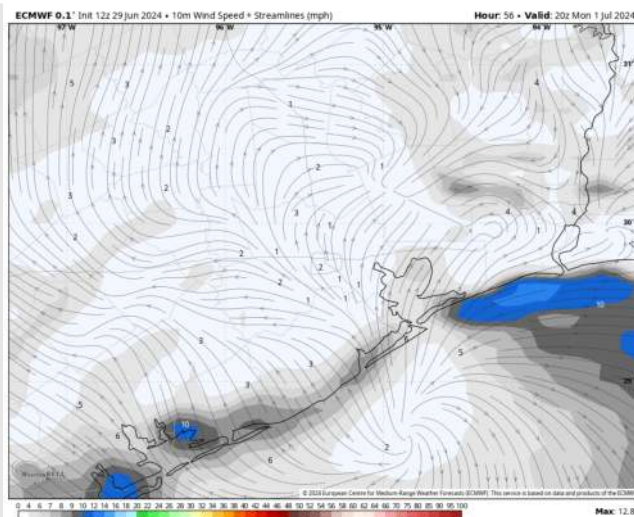
High Temps: **N of Morgan's Point:** Upper 90s F. **S of Morgan's Point:** Low 90s F

Visibility: Not favoring any fog concerns for Monday.

Precip Image: 5 PM CT



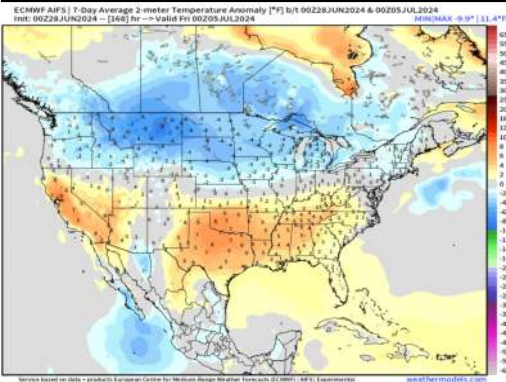
Wind Speed
3 PM CT



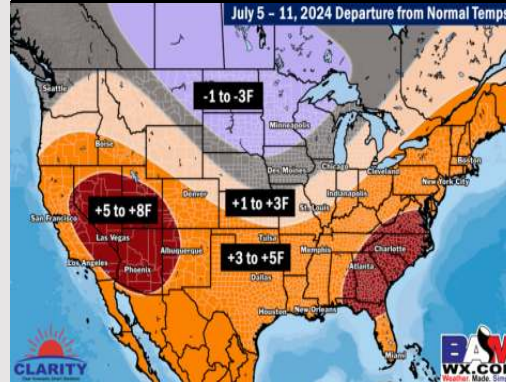
High Temps
Monday

Houston Pilots: 6/29/24

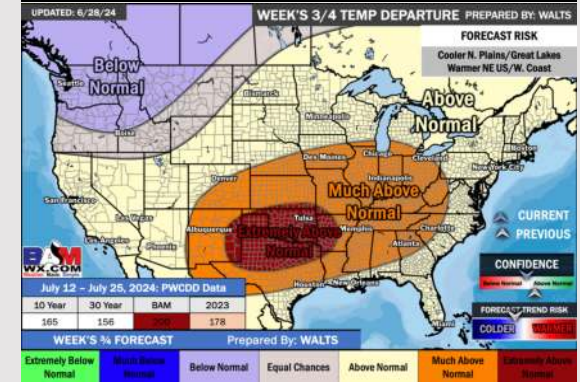
Next 7 Day Temperature Departure



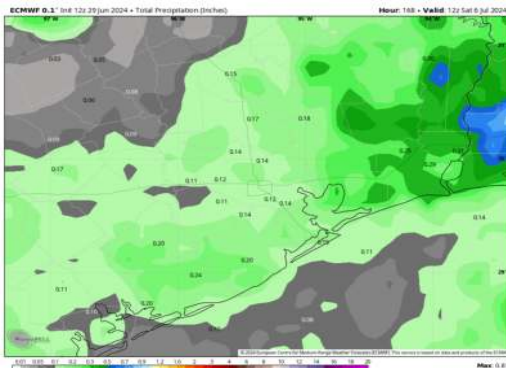
8-14 Day Temperature Departure



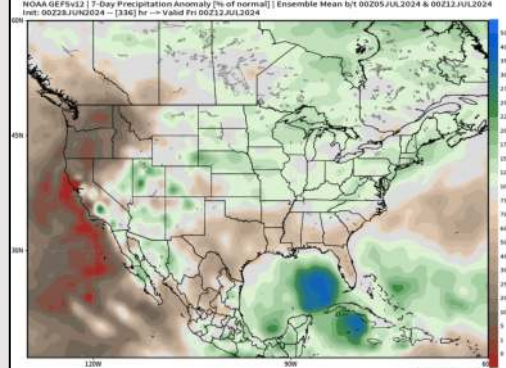
15-30 Day Temperature Departure



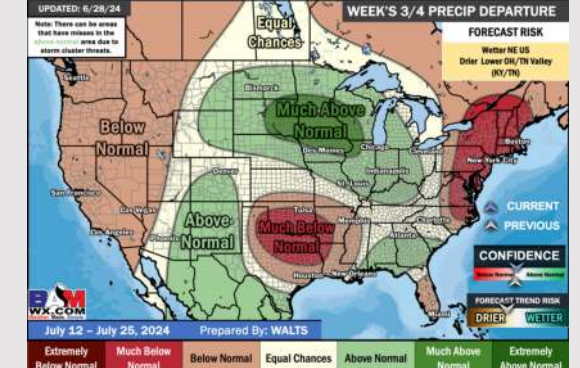
Next 7 Day Total Precipitation



8-14 Day % of Average Precip.



15-30 Day % of Average Precip.



- Temps are expected to be above normal for the week 1 timeframe. Only scattered shower/storm risks are favored throughout the Week 1 period.
- Well below normal precipitation chances are at play during the week 2 timeframe, with the risk of tropical activity needing to be monitored. However, confidence is low in this development. Temps are expected to be above normal for week 2.
- Below normal chances for precipitation and above normal temperatures are favored in the weeks 3/4 timeframe.