

Houston Pilots Forecast Package



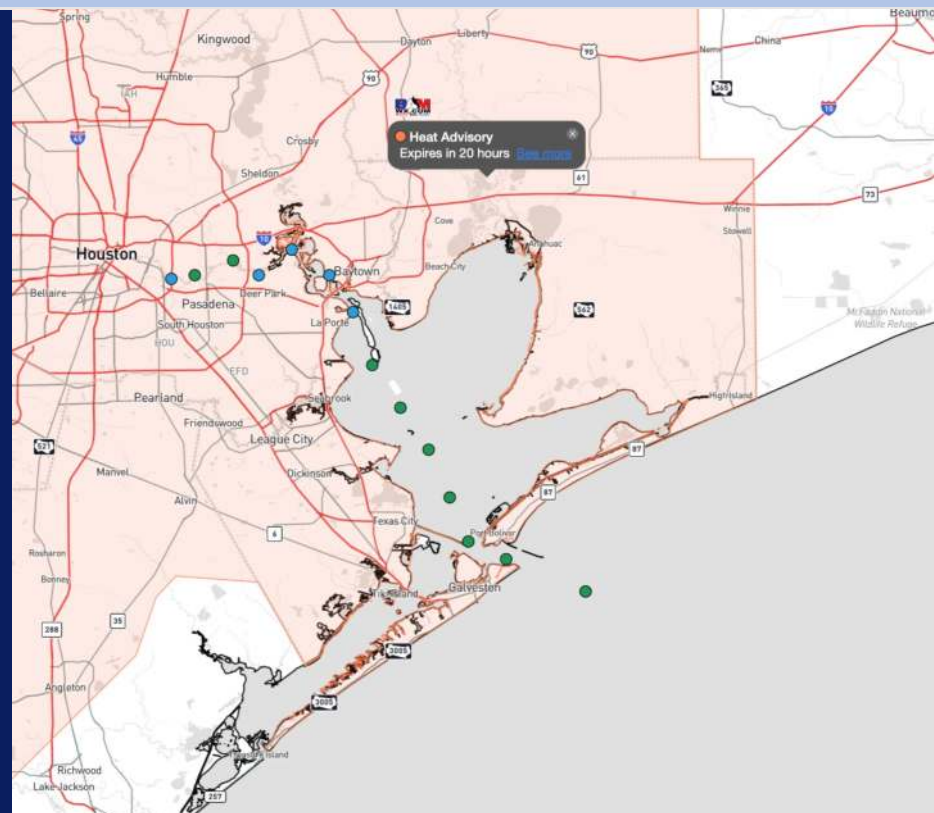
Updated: 11:30 PM CT

Friday, June 28, 2024

Forecaster: John Kemper

Weather Headlines

- Isolated rainfall chances will continue throughout the weekend. Favoring more dry time then not!
- Winds will gradually calm beginning Sunday PM - Monday
- **Monitoring Tropical Storm Beryl developing E of Lesser Antilles. See graphics below for more!**



Current Radar: 11:10 PM CT

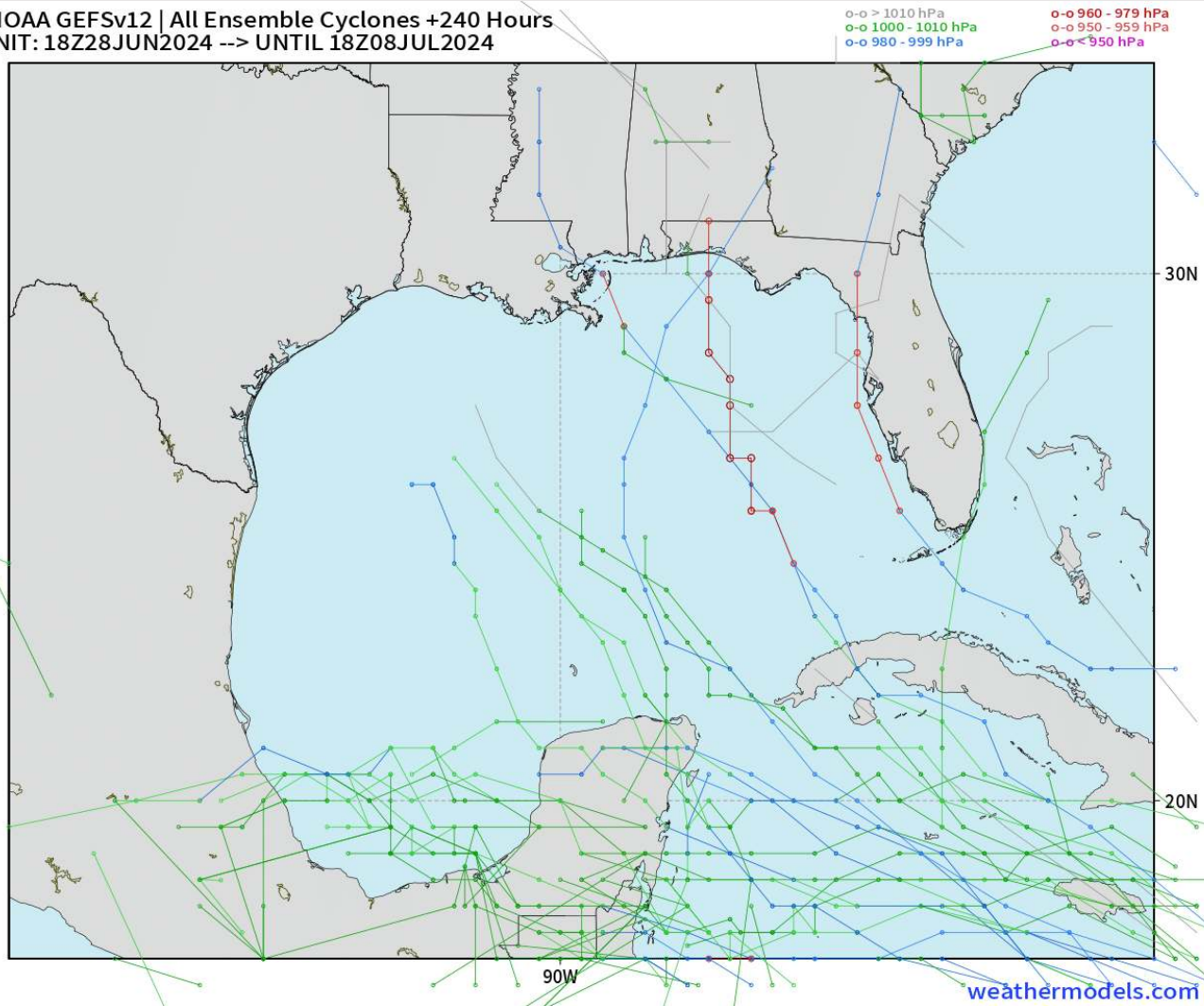


As always, please do not hesitate to reach out to us with any forecast questions via the chat option on Clarity or our on-call number, **(317)-560-8122** press **1** for forecast questions.

Houston Pilots Tropical Update

European Model Next 10 Days - Tropical Tracks

NOAA GFSv12 | All Ensemble Cyclones +240 Hours
INIT: 18Z28JUN2024 --> UNTIL 18Z08JUL2024



Tropical Storm Beryl has developed E of the Lesser Antilles. (See Next Slide for More Info). Timing for Gulf of Mexico impacts will be July 7 – 9 IF Beryl can push into area.

A low-end risk for additional tropical development will also be in play W of Yucatan in the southern most portions of the Gulf of Mexico over the weekend. This is not favored to directly impact Houston.

Tropical Storm Beryl Outlook

Fri June 28th, 2024 – Wed July 3rd

FORECASTER: Lowry

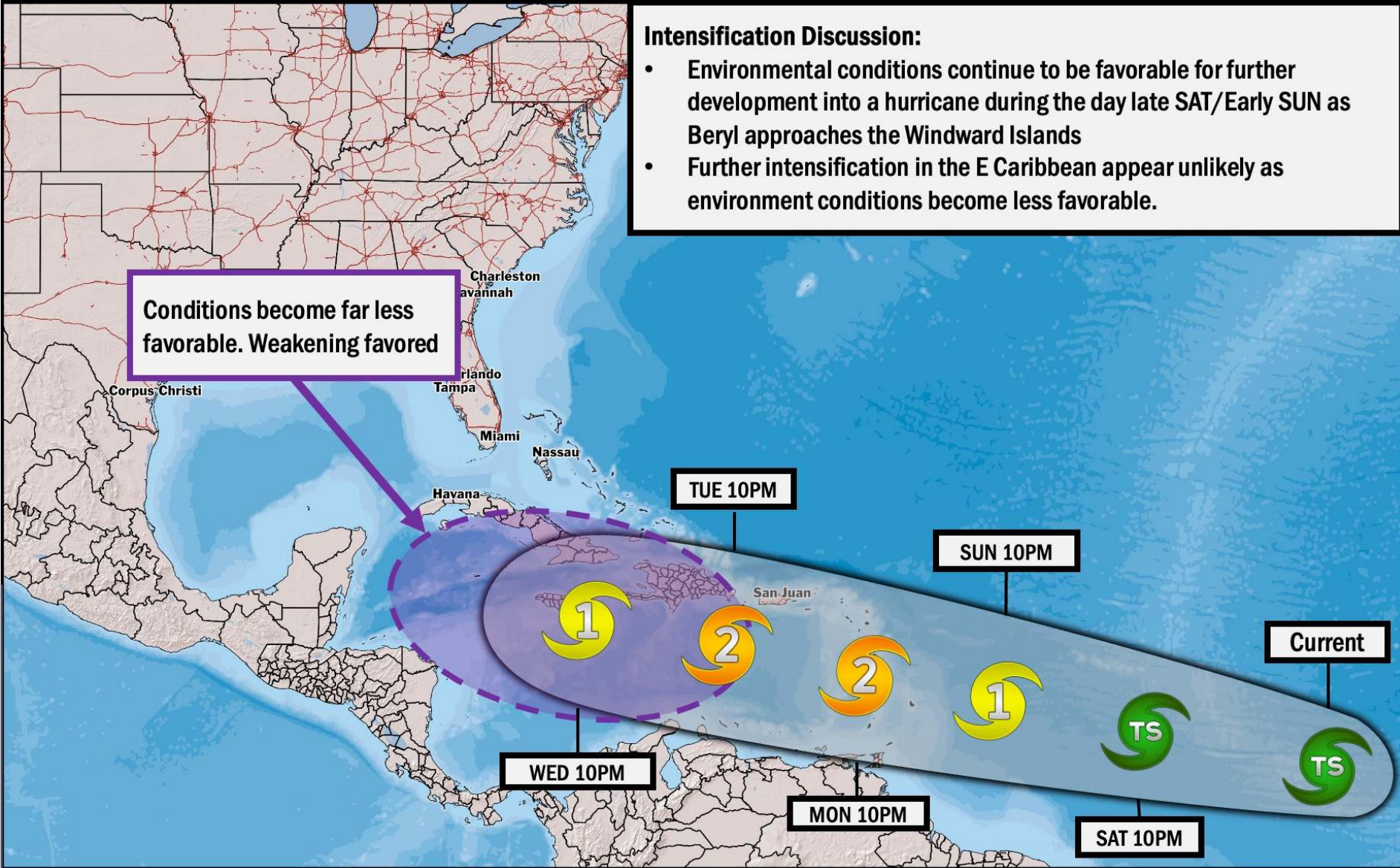
UPDATED: 6/28/24 10:20 PM ET



Intensification Discussion:

- Environmental conditions continue to be favorable for further development into a hurricane during the day late SAT/Early SUN as Beryl approaches the Windward Islands
- Further intensification in the E Caribbean appear unlikely as environment conditions become less favorable.

Conditions become far less favorable. Weakening favored



Houston Pilots Visibility Chart (miles)



Forecast Confidence

Above Normal

Below Normal

Time	Fri 11pm	Sat 12am	Sat 1am	Sat 2am	Sat 3am	Sat 4am	Sat 5am	Sat 6am	Sat 7am	Sat 8am	Sat 9am	Sat 10am	Sat 11am	Sat 12pm	Sat 1pm	Sat 2pm	Sat 3pm	Sat 4pm	Sat 5pm	Sat 6pm	Sat 7pm	Sat 8pm	Sat 9pm	Sat 10pm	
610 Bridge	10	10	10	10	10	10	10	10	10	10	10	10	10	10	10	10	10	10	10	10	10	10	10	10	
Kinder 1	10	10	10	10	10	10	10	10	10	10	10	10	10	10	10	10	10	10	10	10	10	10	10	10	
Greens Bayou	10	10	10	10	10	10	10	10	10	10	10	10	10	10	10	10	10	10	10	10	10	10	10	10	
Shell Crude	10	10	10	10	10	10	10	10	10	10	10	10	10	10	10	10	10	10	10	10	10	10	10	10	
Lynchburg Ferries	10	10	10	10	10	10	10	10	10	10	10	10	10	10	10	10	10	10	10	10	10	10	10	10	
Exxon 3	10	10	10	10	10	10	10	10	10	10	10	10	10	10	10	10	10	10	10	10	10	10	10	10	
Morgans Point	10	10	10	10	10	10	10	10	10	10	10	10	10	10	10	10	10	10	10	10	10	10	10	10	
75/76	10	10	10	10	10	10	10	10	10	10	10	10	10	10	10	10	10	10	10	10	10	10	10	10	
63/64	10	10	10	10	10	10	10	10	10	10	10	10	10	10	10	10	10	10	10	10	10	10	10	10	
51/52	10	10	10	10	10	10	10	10	10	10	10	10	10	10	10	10	10	10	10	10	10	10	10	10	
37/38	10	10	10	10	10	10	10	10	10	10	10	10	10	10	10	10	10	10	10	10	10	10	10	10	
25/26	10	10	10	10	10	10	10	10	10	10	10	10	10	10	10	10	10	10	10	10	10	10	10	10	
11/12	10	10	10	10	10	10	10	10	10	10	10	10	10	10	10	10	10	10	10	10	10	10	10	10	
1 & 2 Bravo	10	10	10	10	10	10	10	10	10	10	10	10	10	10	10	10	10	10	9	9	9	9	9	10	10

NOTE: This is automated data that may/may not agree with the official B.A.M. thinking that's found on the daily slides or special visibility report slides. This data should be used as a guide only

Houston Pilots Wind Chart



Forecast Confidence



Sustained wind 13 Knots
Gusts 18 Knots
Wind from the N

Example

WS: 13
G:18
N

Time Knots	Fri 11pm	Sat 12am	Sat 1am	Sat 2am	Sat 3am	Sat 4am	Sat 5am	Sat 6am	Sat 7am	Sat 8am	Sat 9am	Sat 10am	Sat 11am	Sat 12pm	Sat 1pm	Sat 2pm	Sat 3pm	Sat 4pm	Sat 5pm	Sat 6pm	Sat 7pm	Sat 8pm	Sat 9pm	Sat 10pm
610 Bridge	7 15 S	7 15 S	7 15 S	6 14 S	6 13 S	5 12 S	5 11 S	5 10 S	4 10 S	5 10 S	5 11 S	6 12 S	7 13 S	7 14 S	7 15 SSE	8 17 SSE	9 17 SSE	9 18 SSE	9 18 SSE	9 18 SSE	9 17 SSE	9 17 SSE	7 15 SSE	7 13 SSE
Kinder 1	7 15 S	7 15 S	7 15 S	6 14 S	5 13 S	5 12 S	5 11 S	4 10 S	4 10 S	5 10 S	5 11 S	6 12 S	7 13 S	7 14 S	8 15 SSE	8 17 SSE	9 17 SSE	9 18 SSE	9 18 SSE	9 17 SSE	9 17 SSE	8 15 SSE	7 13 SSE	7 13 SSE
Greens Bayou	7 15 S	7 15 S	7 14 S	6 13 S	5 13 S	5 12 S	5 11 S	4 10 S	4 9 S	5 10 S	5 11 S	5 12 S	7 13 S	7 14 S	8 15 SSE	9 16 SSE	9 17 SSE	9 18 SSE	9 17 SSE	9 17 SSE	9 16 SSE	8 15 SSE	7 13 SSE	7 13 SSE
Shell Crude	7 15 S	7 15 S	7 15 S	6 14 S	5 13 S	5 12 S	5 11 S	4 10 S	4 10 S	5 10 S	5 11 S	5 12 S	7 13 S	7 14 S	8 15 SSE	9 16 SSE	9 17 SSE	9 18 SSE	9 17 SSE	9 17 SSE	9 16 SSE	8 15 SSE	7 13 SSE	7 13 SSE
Lynchburg Ferries	7 15 S	7 15 S	6 14 S	6 13 S	5 13 S	5 12 S	5 11 S	4 10 S	4 9 S	5 10 S	5 11 S	5 12 S	7 13 S	7 14 S	8 15 SSE	9 16 SSE	9 17 SSE	9 18 SSE	9 17 SSE	9 17 SSE	9 16 SSE	8 15 SSE	7 13 SSE	6 13 SSE
Exxon 3	12 17 S	12 16 S	11 16 S	11 15 S	11 14 S	10 14 S	9 13 S	8 13 S	7 12 S	7 12 S	8 13 S	8 14 S	9 15 SSE	9 16 SSE	10 17 SSE	11 18 SSE	11 19 SSE	12 19 SSE	12 18 SSE	13 17 SSE	13 17 SSE	12 16 SSE	11 15 SSE	11 15 SSE
Morgans Point	12 17 S	12 17 S	11 17 S	11 16 S	11 15 S	10 14 S	9 13 S	8 13 S	7 12 S	7 12 S	8 13 S	8 14 S	9 15 SSE	9 16 SSE	10 17 SSE	11 18 SSE	11 19 SSE	12 19 SSE	12 18 SSE	12 17 SSE	12 17 SSE	12 16 SSE	11 15 SSE	11 15 SSE
75/76	13 18 S	13 18 S	13 18 S	13 18 S	12 17 S	11 17 S	11 15 S	10 14 S	9 13 S	9 13 S	9 13 S	9 14 S	9 15 SSE	10 16 SSE	11 17 SSE	11 18 SSE	11 19 SSE	12 19 SSE	13 18 SSE	13 18 SSE	13 17 SSE	13 17 SSE	12 16 SSE	12 16 SSE
63/64	13 18 S	13 19 S	13 19 S	13 18 S	13 17 S	12 17 S	11 16 S	10 14 S	9 13 S	9 13 S	9 13 S	9 15 SSE	9 16 SSE	10 17 SSE	10 18 SSE	11 19 SSE	11 19 SSE	12 19 SSE	12 18 SSE	12 18 SSE	13 17 SSE	12 17 SSE	12 16 SSE	12 16 SSE
51/52	13 19 S	14 19 S	14 19 S	13 19 S	13 18 S	13 18 S	11 16 S	11 15 S	10 14 S	9 14 S	9 15 S	9 16 SSE	9 17 SSE	10 18 SSE	10 19 SSE	11 20 SSE	11 20 SSE	11 19 SSE	12 18 SSE	12 17 SSE	12 17 SSE	12 16 SSE	12 16 SSE	12 16 SSE
37/38	13 19 S	14 19 S	14 19 S	13 19 S	13 18 S	13 18 S	12 17 S	11 15 S	10 14 S	10 14 S	9 15 S	9 15 S	9 16 SSE	10 17 SSE	10 18 SSE	11 19 SSE	11 19 SSE	11 18 SSE	11 17 SSE	11 17 SSE	12 16 SSE	12 16 SSE	12 16 SSE	12 16 SSE
25/26	13 18 S	13 19 S	13 19 S	13 19 S	13 18 S	12 18 S	11 17 S	11 15 S	10 14 S	9 14 S	9 15 S	9 15 S	9 16 SSE	10 17 SSE	10 18 SSE	11 19 SSE	11 19 SSE	11 17 SSE	11 17 SSE	11 17 SSE	11 16 SSE	11 16 SSE	11 16 SSE	11 16 SSE
11/12	11 18 S	12 19 S	12 19 S	12 18 S	11 18 S	11 17 S	11 16 S	9 15 S	9 14 S	9 14 S	9 15 S	9 16 SSE	9 17 SSE	10 18 SSE	10 19 SSE	11 20 SSE	11 20 SSE	11 19 SSE	11 18 SSE	11 17 SSE	11 17 SSE	11 16 SSE	11 16 SSE	10 16 SSE
1 & 2 Bravo	14 19 S	14 20 S	15 21 S	14 20 S	14 20 S	13 19 S	13 18 S	12 17 S	11 16 S	11 15 S	10 15 S	10 15 S	10 15 S	9 15 SSE	9 16 SSE	10 17 SSE	10 18 SSE	11 19 SSE	11 19 SSE	11 18 SSE	11 17 SSE	11 17 SSE	12 16 SSE	12 16 SSE

NOTE: This is automated data that may/may not agree with the official BAM thinking that's found on the daily slides. This data should be used as a guide only.

Houston Pilots: sat. 6/29/2024



Forecast Discussion

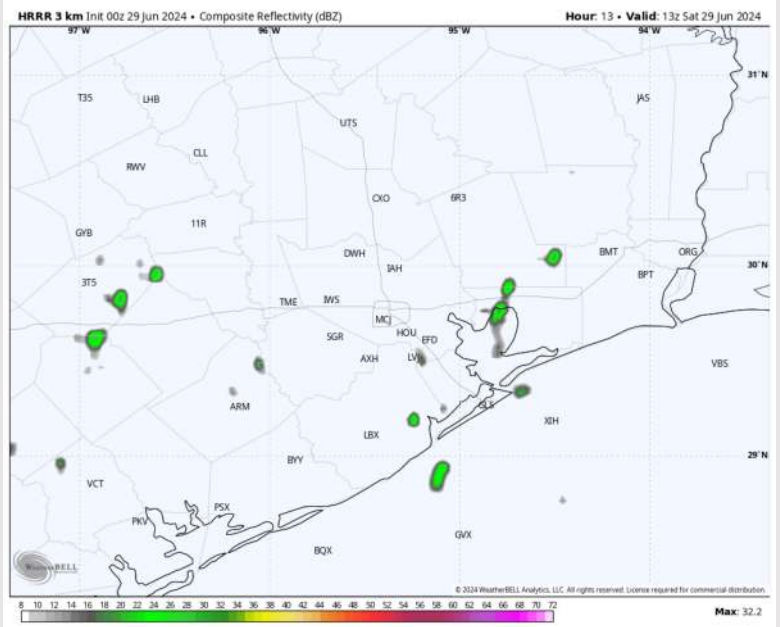
Precip: Isolated (10%) light showers will work back into the area starting at 5 AM and continuing through 2 PM. After 2PM a few scattered storms (20%) will be possible N of Morgan's Point and continue through 6 PM. Dry conditions favored after 6 PM.

Wind: Winds will be out of the S through noon before shifting to being out of the SE after 3PM for the remaining afternoon/evening hours of SAT. **N of Morgan's Point:** Winds will be at 5-10 kts through 2 PM before increasing to 8-13 kts for the remainder of the overnight. **S of Morgan's Point:** Winds at 16-21 kts through 11AM, before decreasing to 10-15 kts for the remainder of the day. **Non-thunderstorms wind gusts of 22-27 kts will be possible through 9AM for stations S of Morgan's Point.**

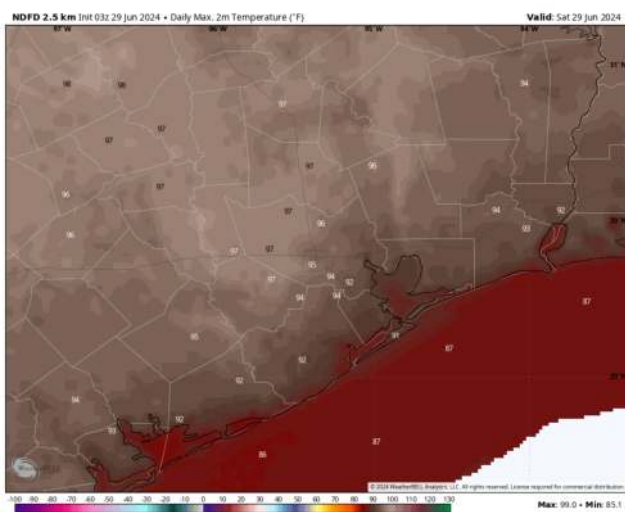
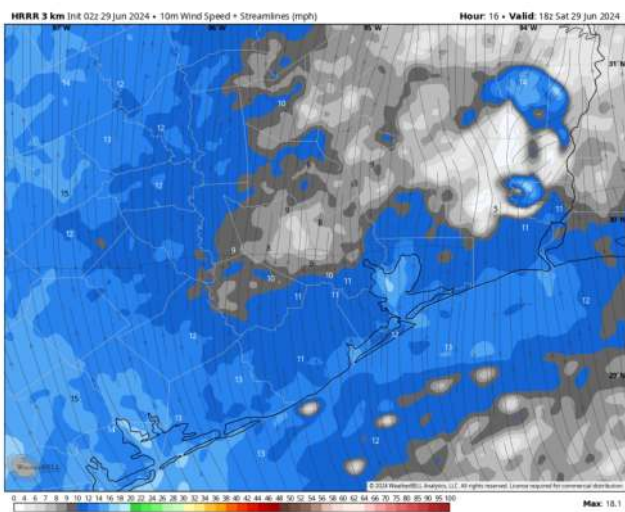
High Temps: **N of Morgan's Point:** Mid 90s F. **S of Morgan's Point:** Mid to upper 80s F

Visibility: Not anticipating any fog concerns for today.

Precip Image: 8 AM CT



Wind Speed:
1 PM CT



High Temps
Today

Houston Pilots: Sun. 6/30/2024



Forecast Discussion

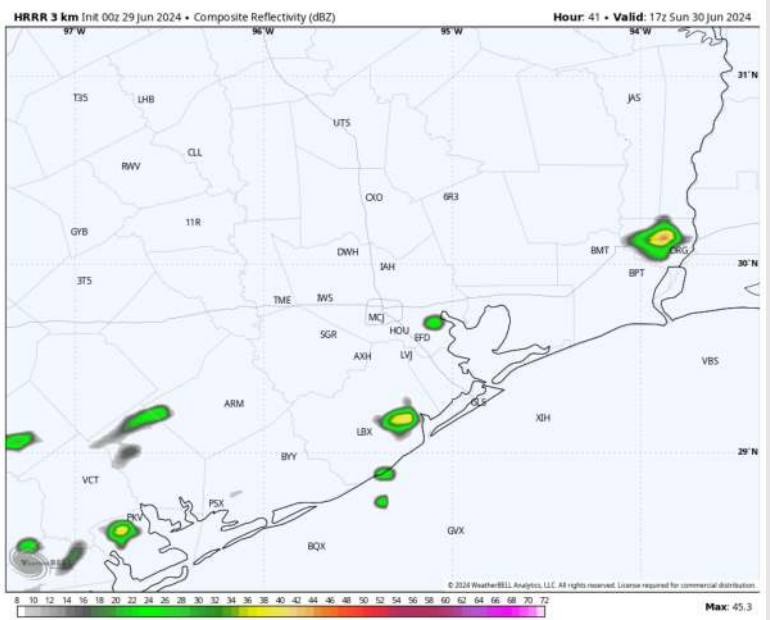
Precip: Isolated chances of a pop-up downpour between 10AM - 6PM (20% chances).

Wind: Winds out of the S/SE throughout the day. **N of Morgan's Point:** Winds at 3-8 kts through the day. **S of Morgan's Point:** Winds at 12-16 kts until 8 AM, then decreasing to 5-10 kts for the remainder of the day.

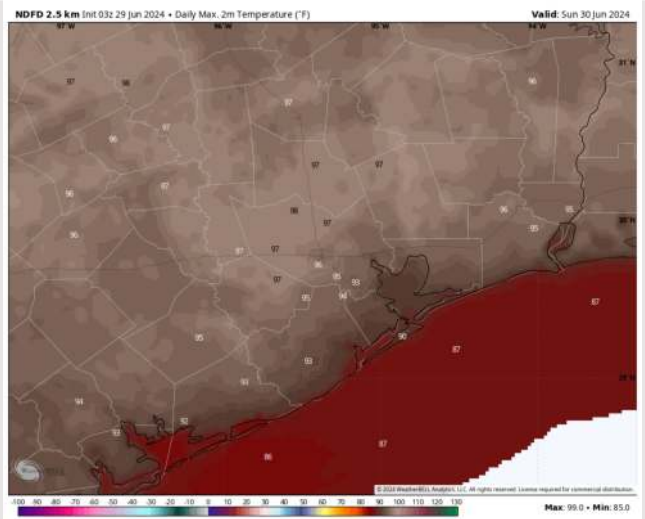
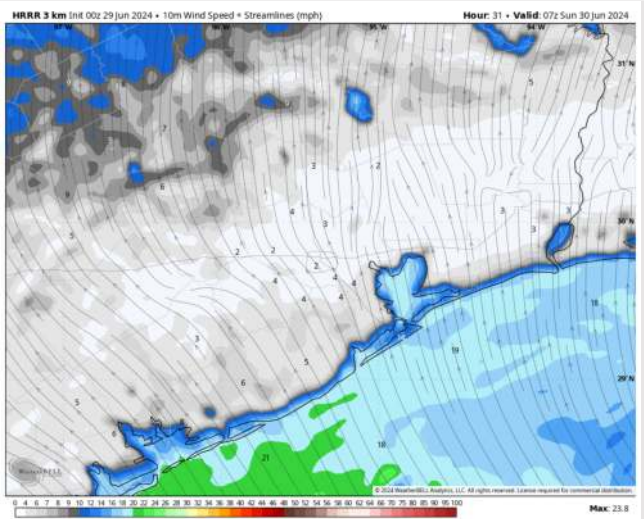
High Temps: **N of Morgan's Point:** Mid to Upper 90s F. **S of Morgan's Point:** Upper 80s F

Visibility: Not anticipating any fog concerns for Sunday.

Precip Image: 12 PM CT



Wind Speed:
3 AM CT



High Temps
Sunday

Houston Pilots: Mon. 7/1/2024



Forecast Discussion

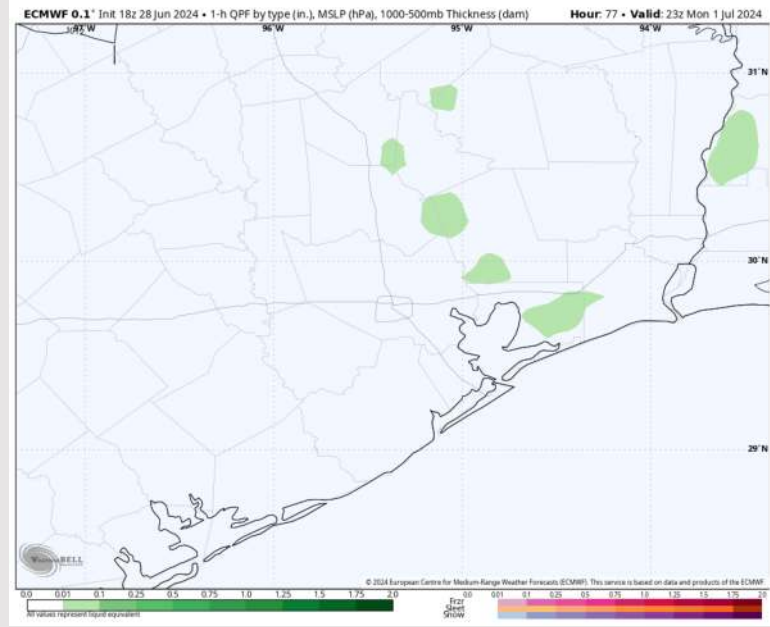
Precip: Hit/Miss (10%) light showers will be possible from 4PM – 9PM. Not favoring storms at present but will need to monitor trends for late night storm cluster.

Wind: Winds expected to be out of the NW through 12PM before becoming calm and variable overall through remainder of Monday.
N of Morgan's Point: Winds at 3 - 6 kts for the entire day. **S of Morgan's Point:** Favoring winds at 7 - 10 kts through 12PM before becoming 4 – 7 kts for remainder of Monday.

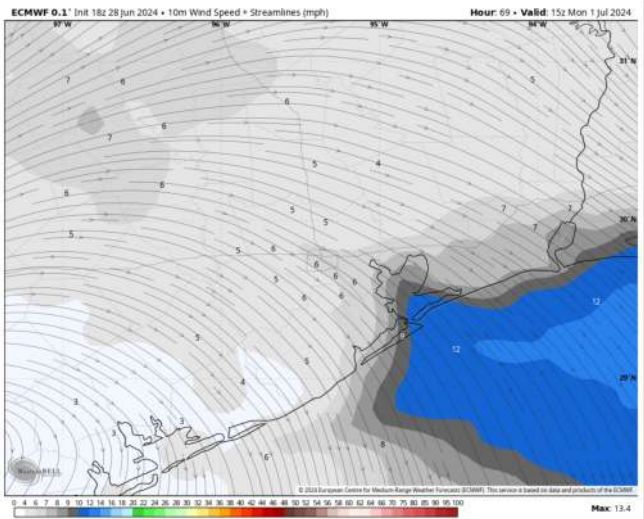
High Temps: **N of Morgan's Point:** Mid 90s F. **S of Morgan's Point:** Upper 80s F

Visibility: Not favoring any fog concerns for Monday.

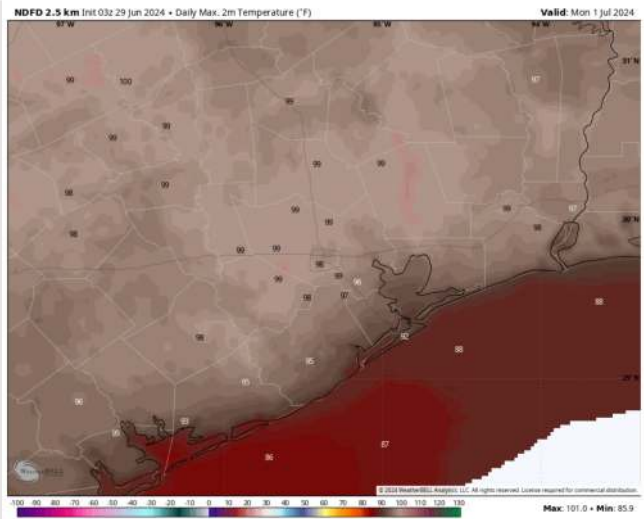
Precip Image: 6 PM CT



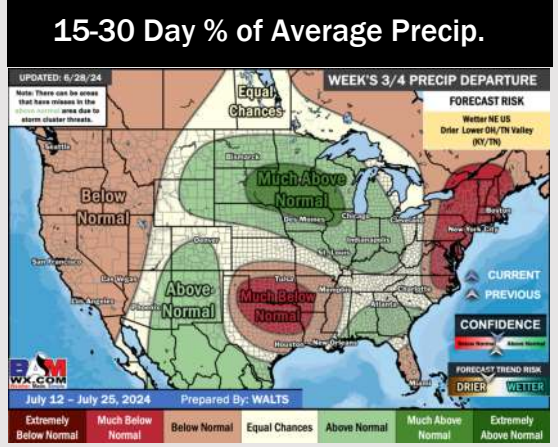
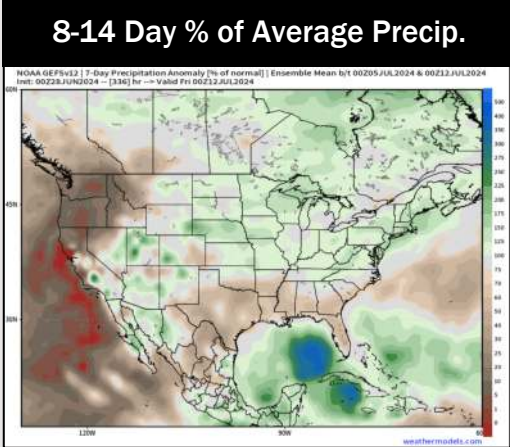
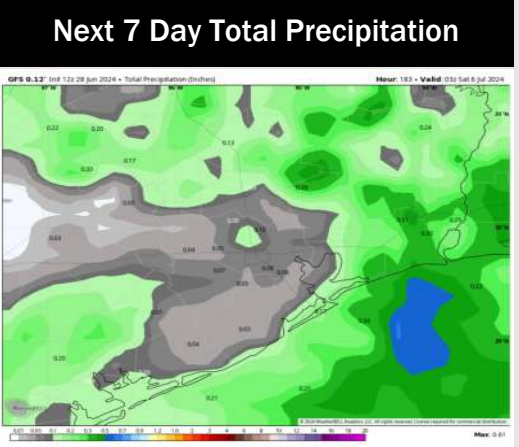
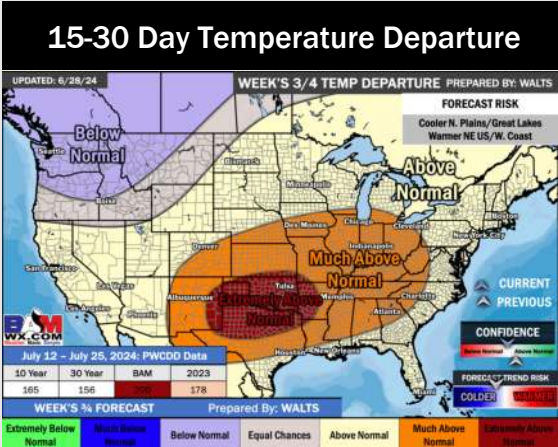
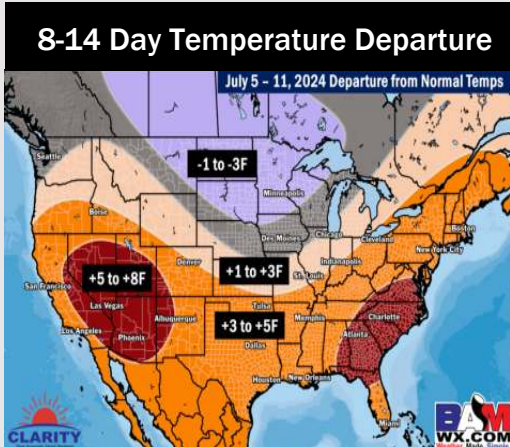
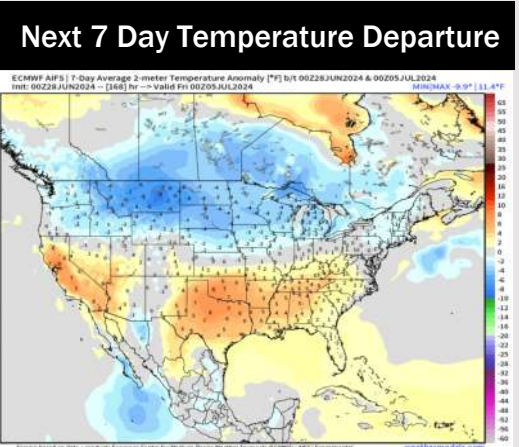
Wind Speed
10 AM CT



High Temps
Monday



Houston Pilots: 6/29/24



- Temps are expected to be above normal for the week 1 timeframe. Only scattered shower/storm risks are favored
- Well below normal precipitation chances are at play during the week 2 timeframe, with the risk of tropical activity needing to be monitored. However, confidence is low in this development. Temps are expected to be above normal for week 2.
- Below normal chances for precipitation and above normal temperatures are favored in the weeks 3/4 timeframe.