

Houston Pilots Forecast Package

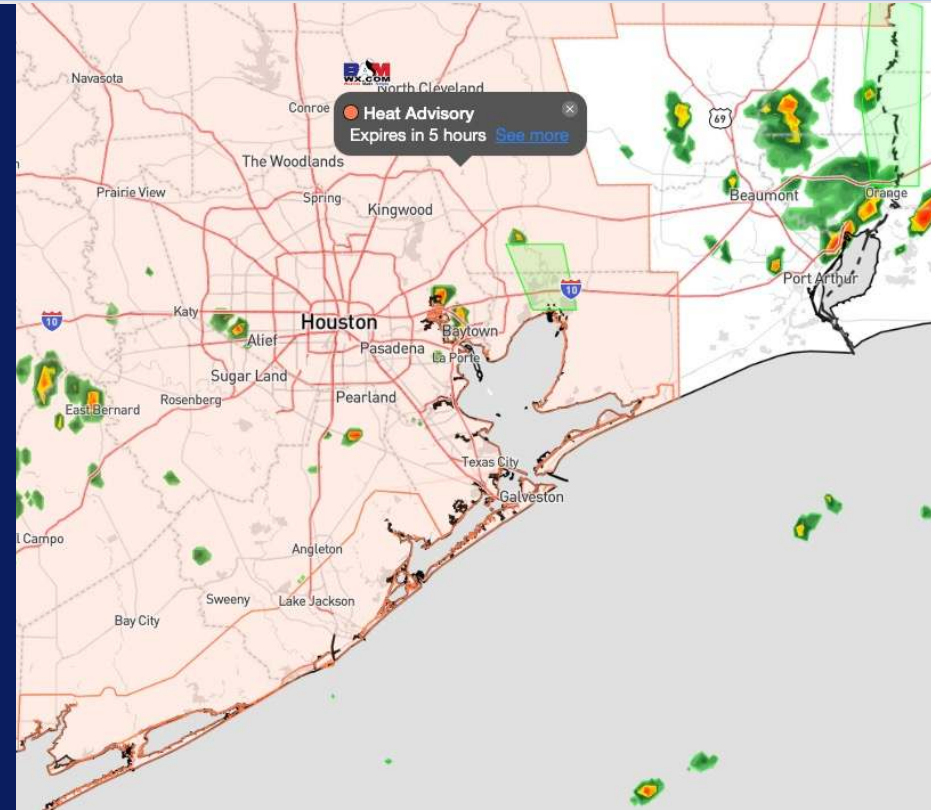


Updated: 2:00 PM CT
Friday, June 28, 2024

Forecaster: Jonathan Kipper

Weather Headlines

- Isolated rainfall chances will continue throughout the weekend. Favoring more dry time then not!
- Winds are expected to become slightly elevated later this evening and throughout SAT
- Monitoring the low-end potential for possible Tropical Activity. See Tropical Slide for more info.



Current Radar: 1:50 PM CT



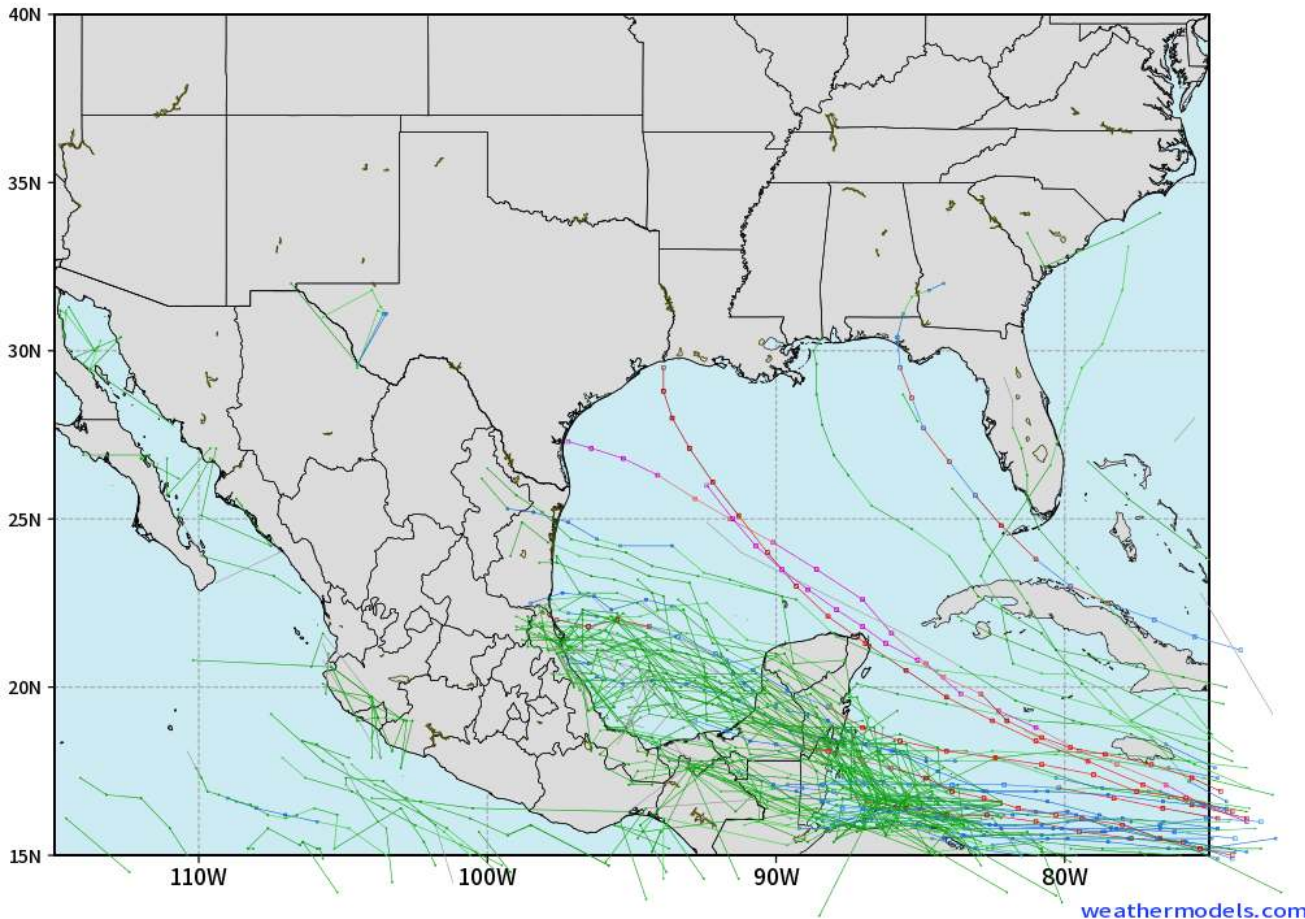
As always, please do not hesitate to reach out to us with any forecast questions via the chat option on Clarity or our on-call number, **(317)-560-8122** press **1** for forecast questions.

Houston Pilots Tropical Update

European Model Next 10 Days - Tropical Tracks

ECMWF GULF EPS Cyclone Locations --> Next [10-days]
INIT: 00Z28JUN2024 --> UNTIL 00Z08JUL2024

o-o ENSEMBLE MEAN
o-o 1000 - 1010 hPa
o-o 980 - 999 hPa
o-o 960 - 979 hPa
o-o 950 - 959 hPa
o-o < 950 hPa



Monitoring an area of interest currently located off the NE Coast of South America.

With confidence remaining low at this distance, data is providing a possible signal for a Tropical Storm/Low-end Hurricane in the Caribbean/Gulf of Mexico.

Timeframe to be monitored is ~ July 6 - July 10.

Houston Pilots Visibility Chart (miles)



Time	Fri 2pm	Fri 3pm	Fri 4pm	Fri 5pm	Fri 6pm	Fri 7pm	Fri 8pm	Fri 9pm	Fri 10pm	Fri 11pm	Sat 12am	Sat 1am	Sat 2am	Sat 3am	Sat 4am	Sat 5am	Sat 6am	Sat 7am	Sat 8am	Sat 9am	Sat 10am	Sat 11am	Sat 12pm	Sat 1pm	
610 Bridge	10	10	10	10	10	10	10	10	10	10	10	10	10	10	10	10	10	10	10	10	10	10	10	10	
Kinder 1	10	10	10	10	10	10	10	10	10	10	10	10	10	10	10	10	10	10	10	10	10	10	10	10	
Greens Bayou	10	10	10	10	10	10	10	10	10	10	10	10	10	10	10	10	10	10	10	10	10	10	10	10	
Shell Crude	10	10	10	10	10	10	10	10	10	10	10	10	10	10	10	10	10	10	10	10	10	10	10	10	
Lynchburg Ferries	10	10	10	10	10	10	10	10	10	10	10	10	10	10	10	10	10	10	10	10	10	10	10	10	
Exxon 3	10	10	10	10	10	10	10	10	10	10	10	10	10	10	10	10	10	10	10	10	10	10	10	10	
Morgans Point	10	10	10	10	10	10	10	10	10	10	10	10	10	10	10	10	10	10	10	10	10	10	10	10	
75/76	10	10	10	10	10	10	10	10	10	10	10	10	10	10	10	10	10	10	10	10	10	10	10	10	
63/64	10	10	10	10	10	10	10	10	10	10	10	10	10	10	10	10	10	10	10	10	10	10	10	10	
51/52	10	10	10	10	10	10	10	10	10	10	10	10	10	10	10	10	10	10	10	10	10	10	10	10	
37/38	10	10	10	10	10	10	10	10	10	10	10	10	10	10	10	10	10	10	10	10	10	10	10	10	
25/26	10	10	10	10	10	10	10	10	10	10	10	10	10	10	10	10	10	10	10	10	10	10	10	10	
11/12	10	10	10	10	10	10	10	10	10	10	10	10	10	10	10	10	10	10	10	10	10	10	10	10	
1 & 2 Bravo	10	10	10	10	10	10	10	10	10	10	10	10	10	10	10	10	10	10	10	10	10	9	9	9	10

NOTE: This is automated data that may/may not agree with the official BAM thinking that's found on the daily slides or special visibility report slides. This data should be used as a guide only

Houston Pilots Wind Chart



Forecast Confidence



Sustained wind 13 Knots
Gusts 18 Knots
Wind from the N

Example

WS: 13
G:18
N

Time Knots	Fri 2pm	Fri 3pm	Fri 4pm	Fri 5pm	Fri 6pm	Fri 7pm	Fri 8pm	Fri 9pm	Fri 10pm	Fri 11pm	Sat 12am	Sat 1am	Sat 2am	Sat 3am	Sat 4am	Sat 5am	Sat 6am	Sat 7am	Sat 8am	Sat 9am	Sat 10am	Sat 11am	Sat 12pm	Sat 1pm
610 Bridge	7 14 S	7 15 S	9 16 S	9 17 S	9 17 S	9 17 S	9 16 S	8 15 S	7 15 S	7 15 S	7 14 S	6 14 S	6 13 S	5 12 S	5 11 S	5 11 S	5 10 S	5 10 S	5 11 S	5 11 S	6 12 S	7 13 S	7 15 S	8 16 S
Kinder 1	7 14 S	8 15 S	9 16 S	9 17 S	9 16 S	9 16 S	8 16 S	8 15 S	7 15 S	7 14 S	7 14 S	6 14 S	6 13 S	5 12 S	5 11 S	5 11 S	5 10 S	4 10 S	5 11 S	5 11 S	6 12 S	7 13 S	7 15 S	8 16 S
Greens Bayou	7 14 S	8 15 SSE	9 16 S	9 16 S	9 16 S	9 16 S	8 16 S	8 15 S	7 15 S	7 14 S	6 14 S	6 14 S	5 13 S	5 12 S	5 11 S	5 10 S	5 10 S	4 10 S	5 11 S	5 11 S	6 12 S	7 13 S	7 15 S	8 16 SSE
Shell Crude	7 14 S	8 15 S	9 16 S	9 16 S	9 16 S	9 16 S	8 16 S	8 15 S	7 15 S	7 14 S	6 14 S	6 14 S	5 13 S	5 12 S	5 11 S	5 11 S	5 10 S	4 10 S	5 11 S	5 11 S	6 12 S	7 13 S	7 15 S	8 16 SSE
Lynchburg Ferries	7 14 S	8 15 SSE	9 16 S	9 17 S	9 17 S	9 17 S	8 16 S	7 15 S	7 15 S	7 14 S	6 14 S	6 14 S	5 13 S	5 12 S	5 11 S	5 10 S	4 10 S	4 10 S	5 11 S	5 11 S	6 12 S	7 13 S	7 15 S	8 16 SSE
Exxon 3	9 15 S	11 17 SSE	11 18 S	12 18 S	12 17 S	12 18 S	12 18 S	12 17 S	12 17 S	11 17 S	11 17 S	11 16 S	11 15 S	10 15 S	10 15 S	9 13 S	8 13 S	7 12 S	8 12 S	8 13 S	8 13 S	9 14 S	9 15 SSE	10 16 SSE
Morgans Point	9 15 SSE	11 17 SSE	11 18 S	12 18 S	12 17 S	12 18 S	12 18 S	12 17 S	12 17 S	11 17 S	11 17 S	11 16 S	11 15 S	10 15 S	10 15 S	9 13 S	8 13 S	8 13 S	8 13 S	8 13 S	8 13 S	9 14 S	9 15 SSE	10 16 SSE
75/76	9 16 S	11 17 S	12 18 S	12 19 S	13 19 S	13 19 S	13 19 S	13 19 S	13 19 S	13 18 S	13 18 S	13 17 S	13 17 S	12 16 S	11 15 S	11 14 S	10 14 S	9 14 S	9 13 S	9 13 S	9 15 S	9 16 S	10 17 SSE	10 17 SSE
63/64	9 16 S	11 17 S	12 18 S	12 19 S	13 19 S	13 19 S	13 19 S	13 19 S	13 19 S	13 18 S	13 18 S	13 18 S	13 17 S	12 16 S	11 15 S	11 14 S	10 14 S	9 14 S	9 13 S	9 13 S	9 15 S	9 16 S	10 17 SSE	10 17 SSE
51/52	9 16 S	11 17 S	11 18 S	12 19 S	12 19 S	13 19 S	13 19 S	13 19 S	13 19 S	13 19 S	13 19 S	13 19 S	13 18 S	13 17 S	12 16 S	11 15 S	11 14 S	10 14 S	10 14 S	10 15 S	10 15 S	10 16 S	10 16 S	10 16 SSE
37/38	9 16 S	11 17 S	11 18 S	12 18 S	12 18 S	13 18 S	13 18 S	13 19 S	13 19 S	13 19 S	13 19 S	13 19 S	13 18 S	13 18 S	12 17 S	11 16 S	11 15 S	10 15 S	10 14 S	10 14 S	10 15 S	10 16 S	10 16 S	10 16 SSE
25/26	10 15 S	11 16 S	11 17 S	11 18 S	12 18 S	12 19 S	13 19 S	13 19 S	13 19 S	13 19 S	13 19 S	13 19 S	13 18 S	12 18 S	11 17 S	11 16 S	10 15 S	10 14 S	10 14 S	10 15 S	10 15 S	10 16 S	10 16 S	10 16 SSE
11/12	10 15 S	10 16 S	11 17 S	11 17 S	11 17 S	11 18 S	11 18 S	11 18 S	11 19 S	11 19 S	11 19 S	12 19 S	12 18 S	11 18 S	11 17 S	11 16 S	10 15 S	9 14 S	9 14 S	9 15 S	9 15 S	9 16 S	10 16 S	10 16 SSE
1 & 2 Bravo	9 15 S	10 15 S	11 16 S	11 17 S	12 17 S	13 18 S	13 19 S	13 19 S	13 19 S	14 19 S	14 20 S	15 21 S	14 20 S	14 20 S	13 19 S	13 19 S	12 17 S	11 16 S	11 16 S	11 15 S	10 15 S	10 15 S	10 15 S	9 15 SSE

NOTE: This is automated data that may/may not agree with the official BAM thinking that's found on the daily slides. This data should be used as a guide only.

Houston Pilots: Fri. 6/28/2024



Forecast Discussion

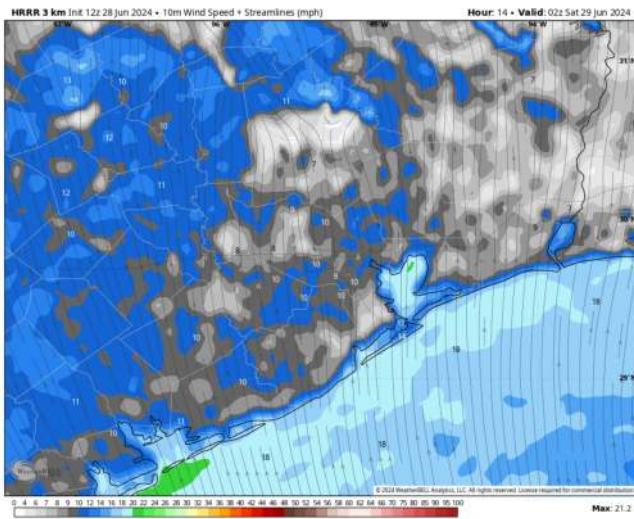
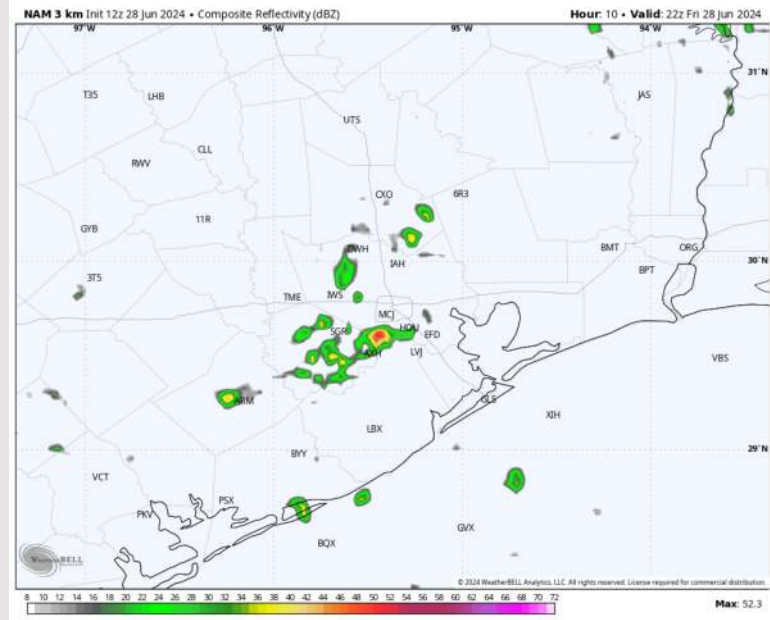
Precip: Hit/Miss (10%) light showers possible will continue through 7 PM, with dry conditions favored afterwards.

Wind: Winds expected to be out of the SW throughout the day. **N of Morgan's Point:** Winds at 8 - 13 kts through the remainder of the night. **S of Morgan's Point:** Favoring winds at 13 -18 kts for the rest of the PM hours

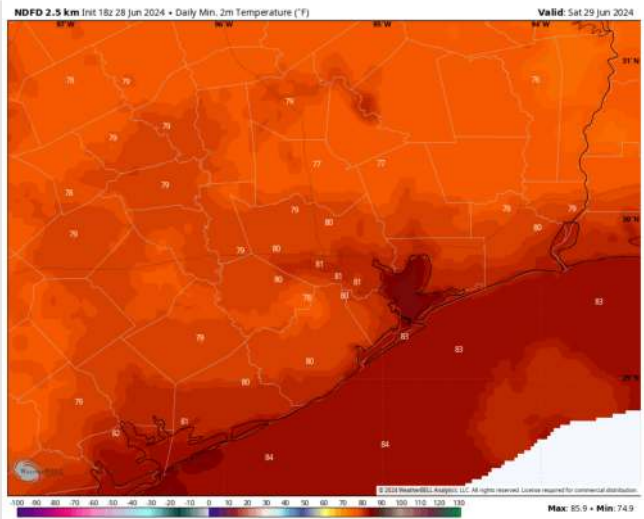
Low Temps SAT AM: **N of Morgan's Point:** Low 80s F. **S of Morgan's Point:** Mid 80s F

Visibility: Not favoring any fog concerns for today.

Precip Image: 5 PM CT



Wind Speed
9 PM CT



Low Temps
SAT AM

Houston Pilots: sat. 6/29/2024



Forecast Discussion

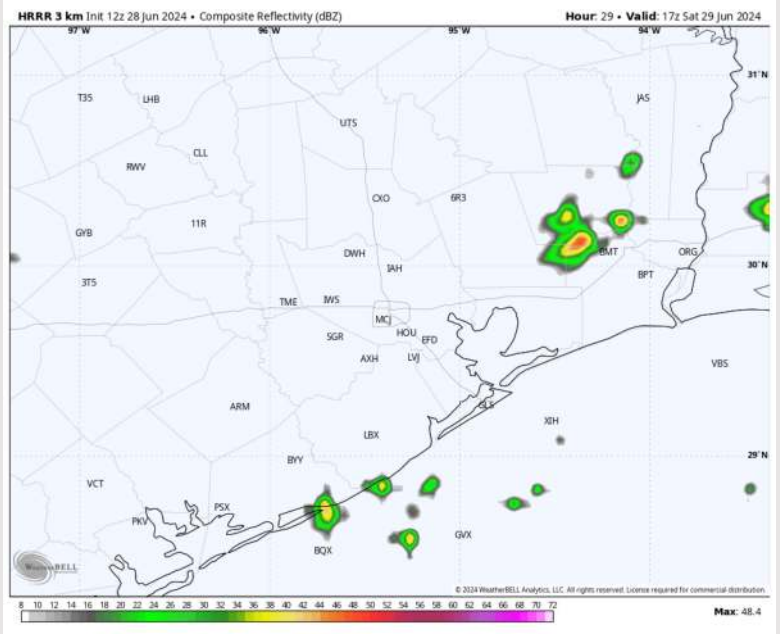
Precip: Isolated (10%) light showers will work back into the area starting at 5 AM and continuing throughout the morning/early afternoon. Towards 2 PM, a few scattered storms (20%) will be possible N of Morgan's Point and continue through 6 PM. Dry conditions favored after 6 PM.

Wind: Winds will be out of the S/SW through noon before shifting to being out of the SE for the PM hours SAT. **N of Morgan's Point:** Winds will be at 5-10 kts through 2 PM before increasing to 8-13 kts for the remainder of the overnight. **S of Morgan's Point:** Winds at 16-21 kts from through 9AM, before decreasing to 11-16 kts for the remainder of the day. **Non-thunderstorms wind gusts of 22-27 kts will be possible through 7AM for stations S of Morgan's Point.**

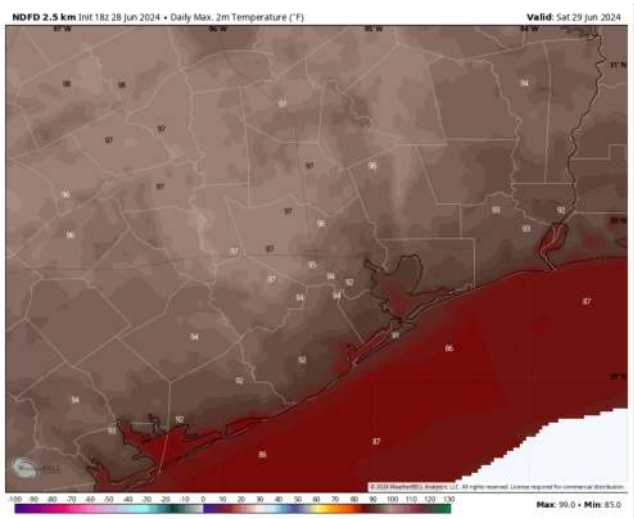
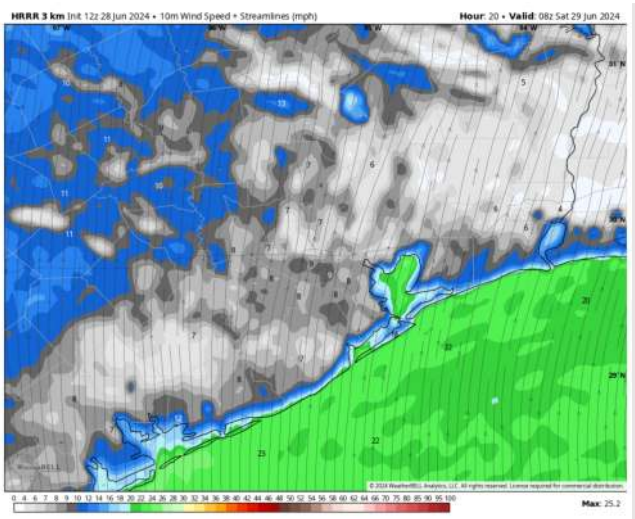
High Temps: **N of Morgan's Point:** Mid 90s F. **S of Morgan's Point:** Mid to upper 80s F

Visibility: Not anticipating any fog concerns for Saturday.

Precip Image: 11 AM CT



Wind Speed:
3 AM CT



High Temps
Saturday

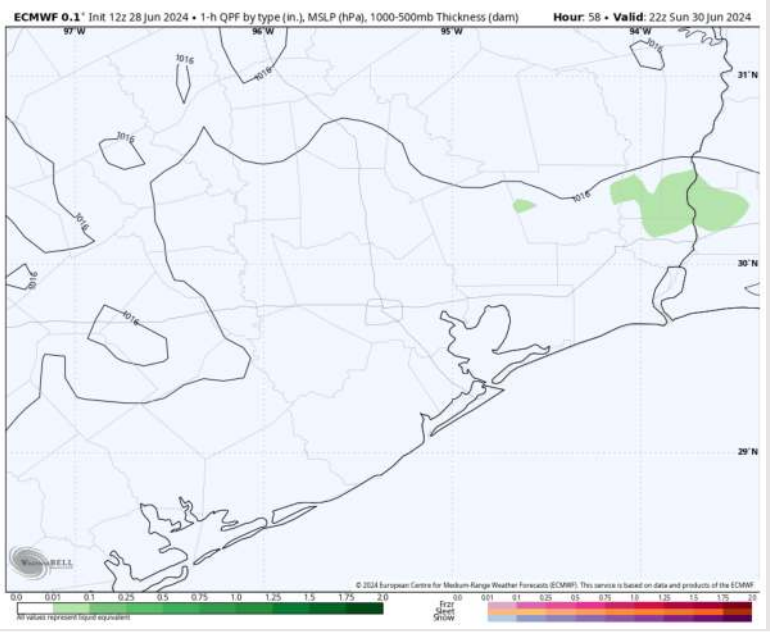
Houston Pilots: Sun. 6/30/2024



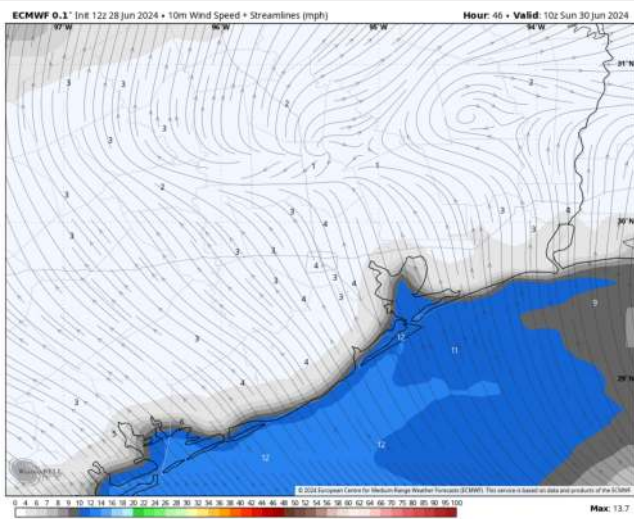
Forecast Discussion

- Precip:** Favoring dry conditions throughout much of the day aside from isolated (10%) chances between 4-7 PM (better risks to be N of all Stations).
- Wind:** Winds out of the S/SE throughout the day. **N of Morgan's Point:** Winds at 3-8 kts through the day. **S of Morgan's Point:** Winds at 10-15 kts until 6 AM, then decreasing to 5-10 kts for the remainder of the day.
- Low Temps:** **N of Morgan's Point:** Mid to Upper 90s F. **S of Morgan's Point:** Upper 80s F
- Visibility:** Not anticipating any fog concerns for Sunday.

Precip Image: 2 PM CT

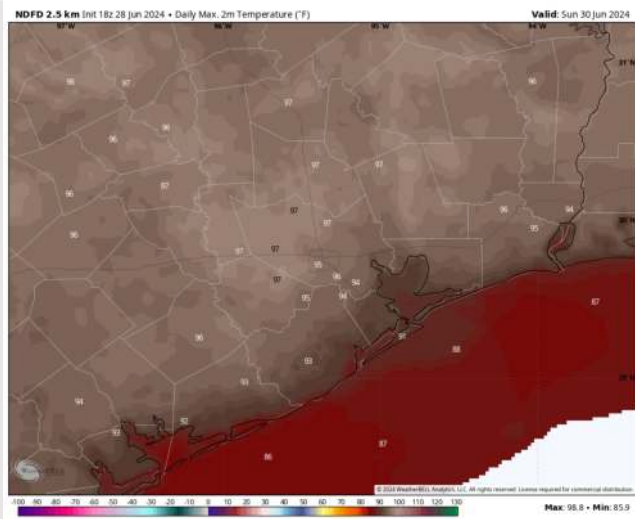


Wind Speed: 5 AM CT



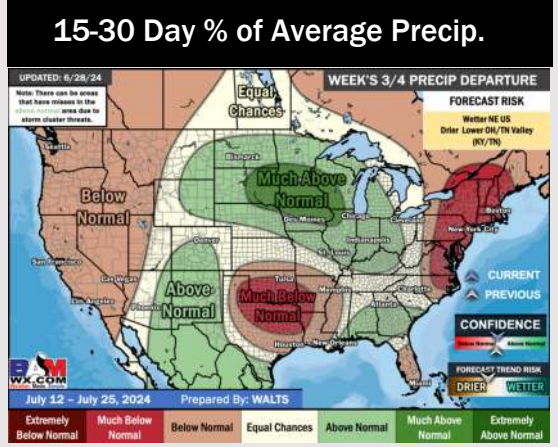
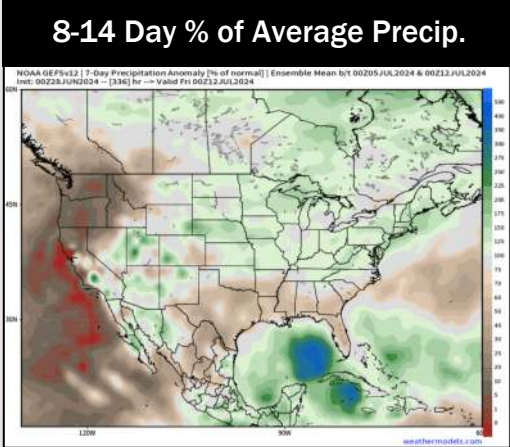
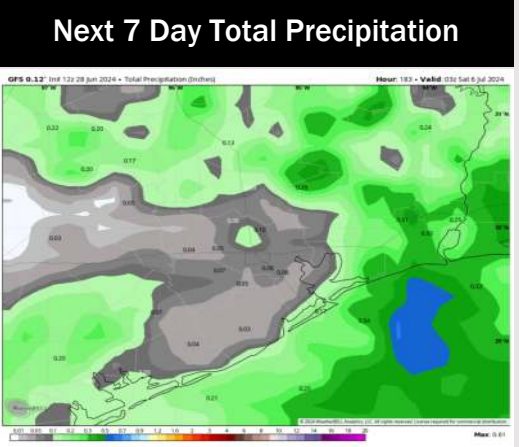
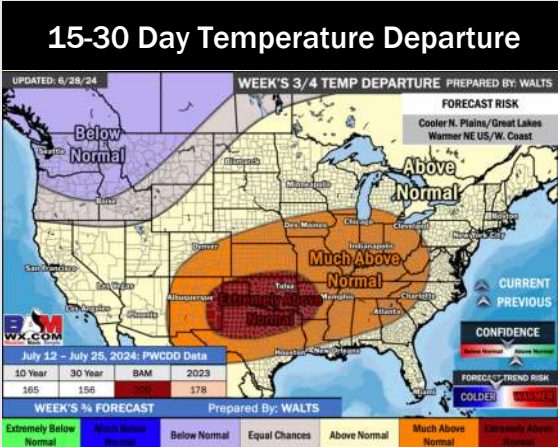
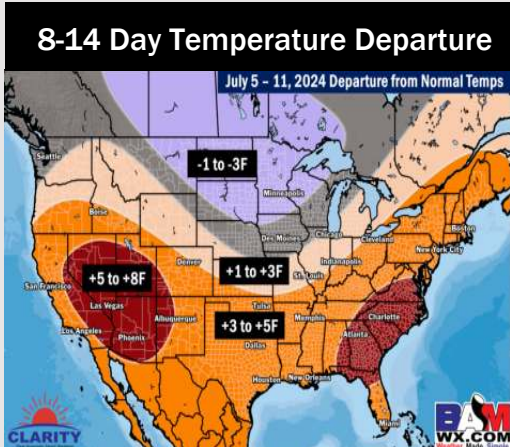
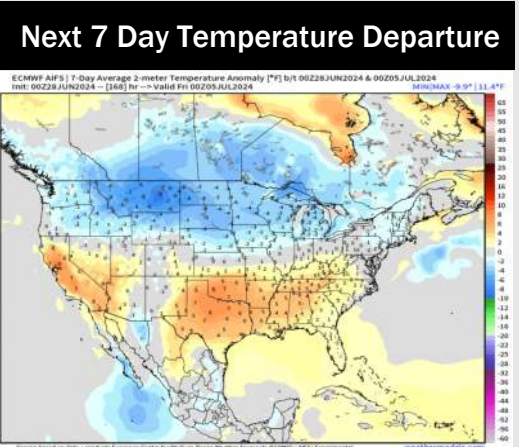
Wind Speed:
5 AM CT

High Temps Sunday



High Temps
Sunday

Houston Pilots: 6/28/24



- Temps are expected to be above normal for the week 1 timeframe. Only scattered shower/storm risks are favored
- Well below normal precipitation chances are at play during the week 2 timeframe, with the risk of tropical activity needing to be monitored. However, confidence is low in this development. Temps are expected to be above normal for week 2.
- Below normal chances for precipitation and above normal temperatures are favored in the weeks 3/4 timeframe.