

Houston Pilots Forecast Package



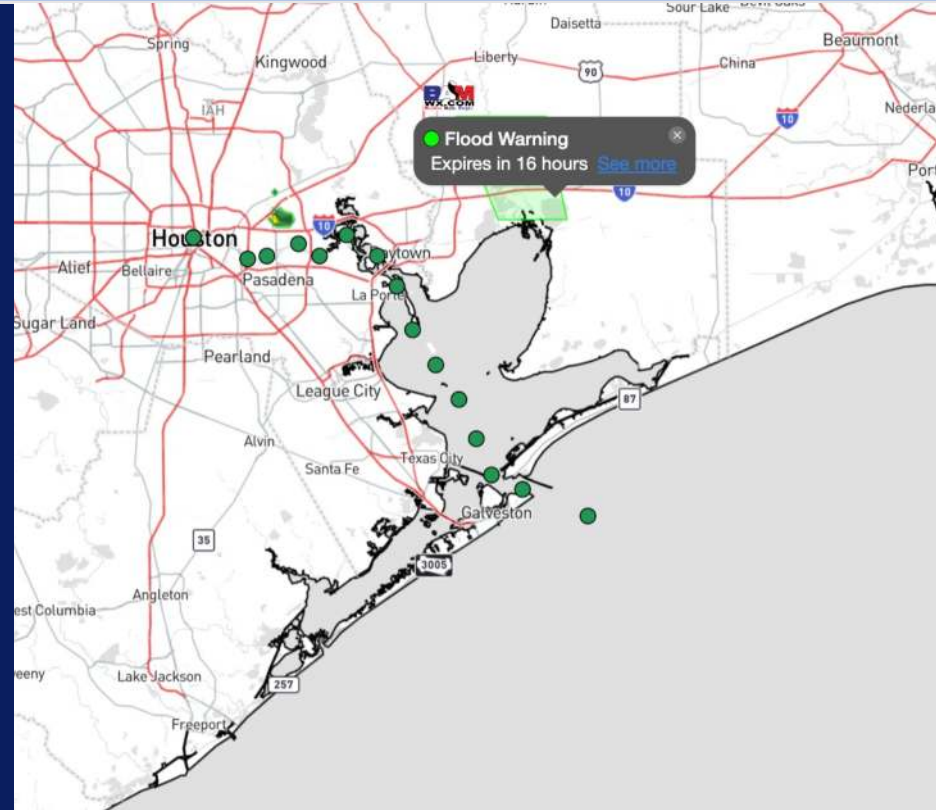
Updated: 10:45 PM CT

Thursday, June 27, 2024

Forecaster: Xander Lowry

Weather Headlines

- Isolated rainfall chances will continue throughout the weekend. Favoring more dry time than not!
- Scattered rain chances lie ahead going into the weekend. Not much accumulation is expected.
- Monitoring the low-end potential for possible Tropical Activity. See Tropical Slide for more info.



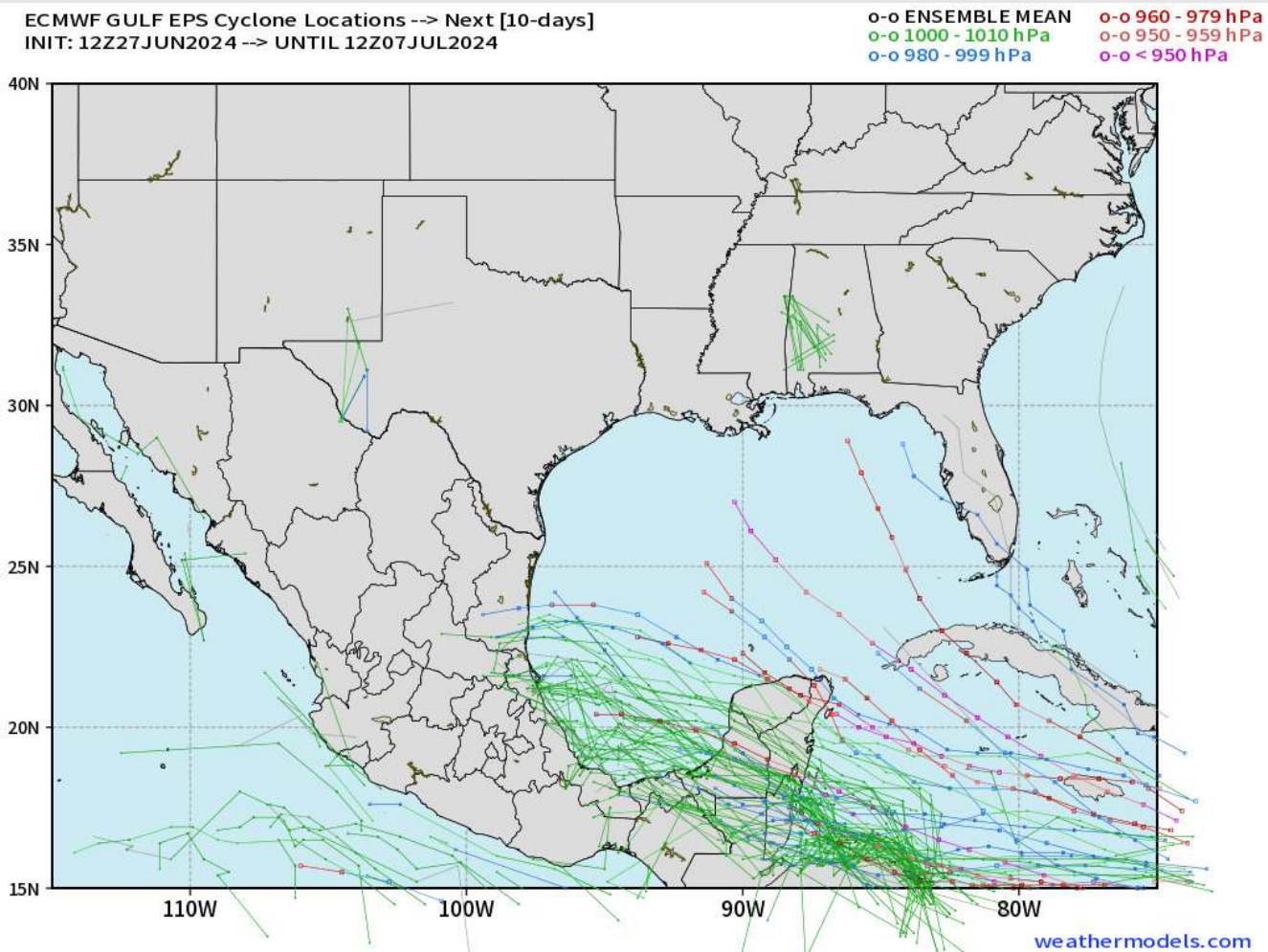
Current Radar: 10:45 PM CT



As always, please do not hesitate to reach out to us with any forecast questions via the chat option on Clarity or our on-call number, **(317)-560-8122** press **1** for forecast questions.

Houston Pilots Tropical Update

European Model Next 10 Days - Tropical Tracks



Monitoring an area of interest currently located off the NE Coast of South America.

With confidence remaining low at this distance, data is providing a possible signal for a Tropical Storm/Low-end Hurricane in the Caribbean/Gulf of Mexico.

Timeframe to be monitored is ~ July 6 - July 10.

Houston Pilots Visibility Chart (miles)



Forecast Confidence



Time	Thu 11pm	Fri 12am	Fri 1am	Fri 2am	Fri 3am	Fri 4am	Fri 5am	Fri 6am	Fri 7am	Fri 8am	Fri 9am	Fri 10am	Fri 11am	Fri 12pm	Fri 1pm	Fri 2pm	Fri 3pm	Fri 4pm	Fri 5pm	Fri 6pm	Fri 7pm	Fri 8pm	Fri 9pm	Fri 10pm
610 Bridge	10	10	10	10	10	10	10	10	6	9	10	10	10	10	10	10	10	10	10	10	10	10	10	10
Kinder 1	10	10	10	10	10	10	10	10	6	9	10	10	10	10	10	10	10	10	10	10	10	10	10	10
Greens Bayou	10	10	10	10	10	10	10	10	6	9	10	10	10	10	10	10	10	10	10	10	10	10	10	10
Shell Crude	10	10	10	10	10	10	10	10	6	9	10	10	10	10	10	10	10	10	10	10	10	10	10	10
Lynchburg Ferries	10	10	10	10	10	10	10	10	6	9	10	10	10	10	10	10	10	10	10	10	10	10	10	10
Exxon 3	10	10	10	10	10	10	10	10	6	9	10	10	10	10	10	10	10	10	10	10	10	10	10	10
Morgans Point	10	10	10	10	10	10	10	10	6	10	10	10	10	10	10	10	10	10	10	10	10	10	10	10
75/76	10	10	10	10	10	10	10	10	7	10	10	10	10	10	10	10	10	10	10	10	10	10	10	10
63/64	10	10	10	10	10	10	10	10	7	10	10	10	10	10	10	10	10	10	10	10	10	10	10	10
51/52	10	10	10	10	10	10	10	10	7	10	10	10	10	10	10	10	10	10	10	10	10	10	10	10
37/38	10	10	10	10	10	10	10	10	9	10	10	10	10	10	10	10	10	10	10	10	10	10	10	10
25/26	10	10	10	10	10	10	10	10	10	10	10	10	10	10	10	10	10	10	10	10	10	10	10	10
11/12	10	10	10	10	10	10	10	10	10	10	10	10	10	10	10	10	10	10	10	10	10	10	10	10
1 & 2 Bravo	10	10	10	10	10	10	10	10	9	10	10	10	10	10	10	10	10	9	9	10	10	9	10	10

NOTE: This is automated data that may/may not agree with the official BAM thinking that's found on the daily slides or special visibility report slides. This data should be used as a guide only

Houston Pilots Wind Chart



Forecast Confidence



Example

Sustained wind 13 Knots
Gusts 18 Knots
Wind from the N

WS: 13
G:18
N

Time Knots	Thu 11pm	Fri 12am	Fri 1am	Fri 2am	Fri 3am	Fri 4am	Fri 5am	Fri 6am	Fri 7am	Fri 8am	Fri 9am	Fri 10am	Fri 11am	Fri 12pm	Fri 1pm	Fri 2pm	Fri 3pm	Fri 4pm	Fri 5pm	Fri 6pm	Fri 7pm	Fri 8pm	Fri 9pm	Fri 10pm
610 Bridge	5	5	5	4	4	4	3	3	3	3	4	5	5	6	6	7	8	9	9	9	9	8	7	
	10	10	10	10	9	9	8	7	7	7	8	10	11	12	13	15	16	17	17	18	17	17	16	15
	S	S	SSW	SSW	SSW	SSW	SSW	SSW	SSW	SSW	SW	SW	SSW	SSW	SSW	S	S	S	S	S	S	S	S	S
Kinder 1	5	5	5	4	4	4	3	3	3	3	4	5	5	6	6	7	8	9	9	9	9	8	7	
	10	10	10	10	9	8	8	7	7	7	8	9	11	12	13	15	16	17	17	17	17	17	16	15
	S	S	SSW	SSW	SSW	SSW	SSW	SSW	SSW	SSW	SW	SW	SSW	SSW	SSW	S	S	S	S	S	S	S	S	S
Greens Bayou	4	4	4	4	4	4	3	3	3	3	3	4	5	6	7	7	8	9	9	9	9	8	8	7
	9	10	10	9	9	8	7	7	7	7	8	9	11	12	13	15	16	17	17	17	16	16	16	15
	S	S	SSW	SSW	SSW	SSW	SSW	SSW	SSW	SSW	SW	SW	SSW	SSW	S	S	S	S	S	S	S	S	S	S
Shell Crude	4	4	4	4	4	4	3	3	3	3	3	4	5	6	7	7	8	9	9	9	9	8	8	7
	9	10	10	9	9	8	8	7	7	7	8	9	11	12	13	15	16	17	17	17	16	16	16	15
	S	S	SSW	SSW	SSW	SSW	SSW	SSW	SSW	SSW	SW	SW	SSW	SSW	S	S	S	S	S	S	S	S	S	S
Lynchburg Ferries	4	4	4	3	3	3	3	3	3	3	3	4	5	6	7	7	9	9	9	9	9	8	7	7
	9	9	10	9	9	8	7	7	7	7	8	9	11	12	13	15	16	17	17	18	17	16	16	15
	S	S	SSW	SSW	SSW	SSW	SSW	SSW	SSW	SSW	SW	SW	SSW	SSW	S	S	S	SSE	S	S	S	S	S	S
Exxon 3	7	7	7	7	7	7	6	5	5	5	5	6	7	7	8	9	11	12	12	12	13	13	12	12
	11	11	11	11	11	10	10	9	9	9	10	10	12	13	14	15	17	18	19	19	18	18	18	17
	S	SSW	SSW	SSW	SSW	SSW	SSW	SSW	SSW	SSW	SW	SW	SSW	S	S	S	SSE	S	S	S	S	S	S	S
Morgans Point	7	7	7	7	7	7	6	6	5	5	5	6	7	7	8	9	11	12	12	12	13	13	12	12
	11	11	11	11	11	10	10	9	9	9	10	10	12	13	14	15	17	18	19	19	18	18	18	17
	S	SSW	SSW	SSW	SSW	SSW	SSW	SSW	SSW	SSW	SW	SW	SSW	S	S	SSE	SSE	S	S	S	S	S	S	S
75/76	9	9	9	9	8	8	7	7	7	7	7	7	7	7	9	10	11	12	13	13	13	13	13	13
	13	12	12	12	12	12	11	11	10	10	10	11	12	14	15	16	17	19	19	19	19	19	19	19
	SSW	SSW	SSW	SSW	SSW	SSW	SSW	SSW	SSW	SSW	SSW	SSW	S	SSE	SSE	SSE	S	S	S	S	S	S	S	S
63/64	9	9	9	9	9	9	8	7	7	7	7	7	7	8	9	10	11	12	13	13	13	13	13	13
	13	12	12	12	12	12	11	11	10	10	11	11	12	14	15	16	17	19	19	19	19	19	19	19
	SSW	SSW	SSW	SSW	SSW	SSW	SSW	SSW	SSW	SSW	SSW	SSW	S	S	S	S	S	S	S	S	S	S	S	S
51/52	9	9	9	9	9	9	8	7	7	7	7	7	7	8	9	10	11	12	13	13	13	13	13	13
	13	13	13	13	13	13	12	12	11	11	11	12	13	14	15	16	17	19	19	19	19	19	19	19
	SSW	SSW	SSW	SSW	SSW	SSW	SSW	SSW	SSW	SSW	SSW	SSW	S	S	S	S	S	S	S	S	S	S	S	S
37/38	9	9	9	9	9	9	8	7	7	7	7	7	8	9	9	10	11	12	12	13	13	13	13	13
	13	13	13	13	13	13	13	12	12	12	12	12	13	14	15	15	17	19	19	19	19	19	19	19
	SSW	SSW	SSW	SSW	SSW	SSW	SSW	SSW	SSW	SSW	SSW	SSW	S	S	S	S	S	S	S	S	S	S	S	S
25/26	9	9	9	9	9	9	8	7	7	7	7	7	8	9	9	10	11	12	12	12	12	13	13	13
	13	13	13	13	13	13	13	12	12	12	12	12	13	14	15	15	17	18	18	19	18	19	19	19
	SSW	SSW	SSW	SSW	SSW	SSW	SSW	SSW	SSW	SSW	SSW	SSW	S	S	S	S	S	S	S	S	S	S	S	S
11/12	8	8	8	8	8	8	8	7	7	7	7	7	8	9	9	10	11	12	11	11	11	11	11	11
	13	12	13	13	13	13	13	13	12	12	12	12	13	14	14	15	17	18	18	18	18	18	18	18
	SSW	SSW	SSW	SSW	SSW	SSW	SSW	SSW	SSW	SSW	SSW	SSW	S	S	S	S	S	S	S	S	S	S	S	S
1 & 2 Bravo	9	10	10	10	10	11	10	9	9	9	9	9	9	9	9	10	11	12	12	12	13	13	13	14
	13	14	14	14	15	15	15	13	13	13	13	13	13	13	14	15	16	17	18	18	18	19	20	20
	SSW	SSW	SSW	SSW	SSW	SSW	SSW	SSW	SSW	SSW	SSW	SSW	SSW	SSW	SSW	SSW	S	S	S	S	S	S	S	S

NOTE: This is automated data that may/may not agree with the official BAM thinking that's found on the daily slides. This data should be used as a guide only.

Houston Pilots: Fri. 6/28/2024



Forecast Discussion

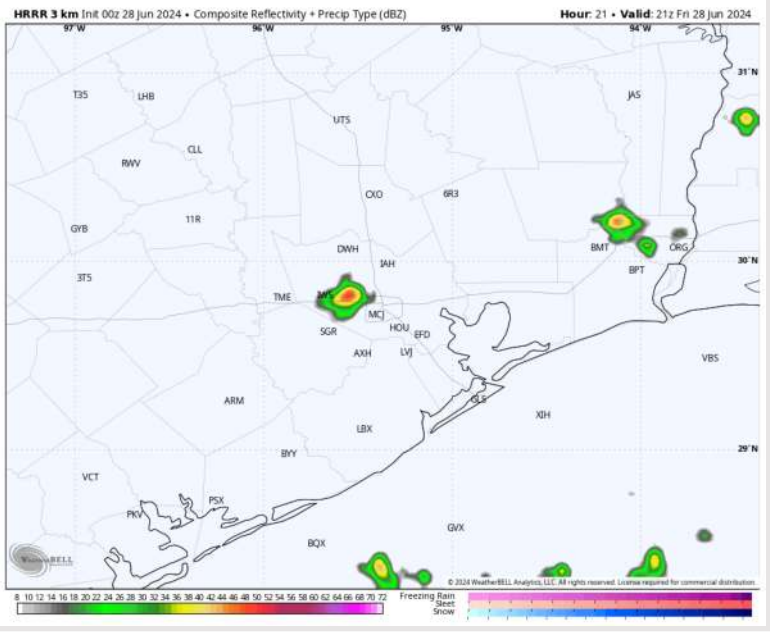
Precip: Hit/Miss (10%) light showers possible between 4 AM – 6 PM, then favoring dry conditions through the remainder of the overnight.

Wind: Winds expected to be out of the SW throughout the day. **N of Morgan's Point:** Favoring winds at 3 - 8 kts through 2PM. Increasing slightly to 8 - 13 through the remainder of the night. **S of Morgan's Point:** Favoring winds at 7 - 12 kts through 3 PM, increasing to 13 - 20 kts after that time.

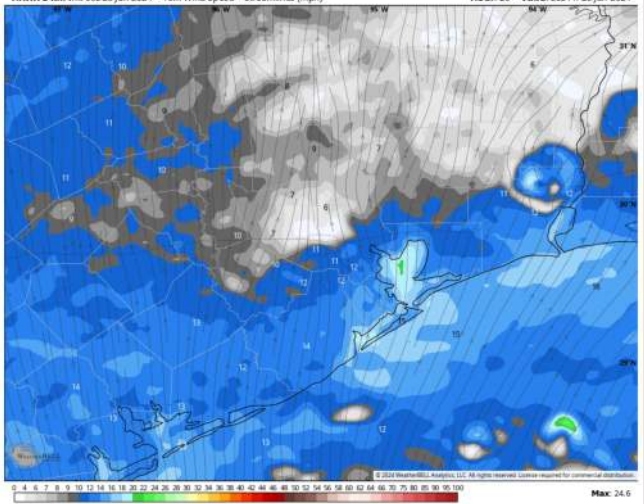
High Temps: **N of Morgan's Point:** Mid 90s F. **S of Morgan's Point:** Upper 80s F

Visibility: Not favoring any fog concerns for today.

Precip Image: 4 PM CT

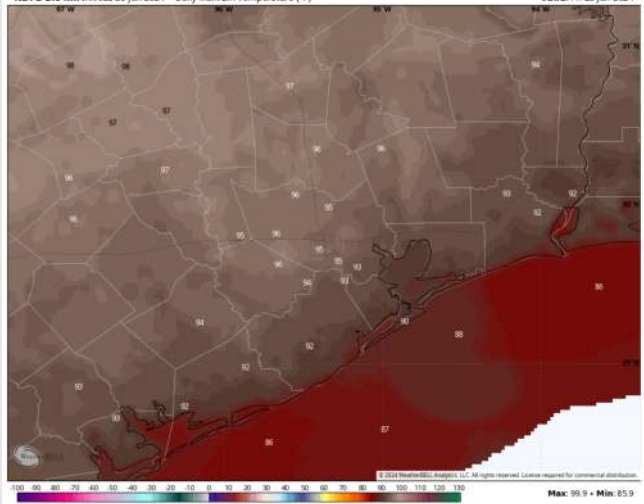


HRRR 3 km Init 00z 28 Jun 2024 • 10m Wind Speed • Streamlines (mph) Hour: 20 • Valid: 20z 28 Jun 2024



Wind Speed
3 PM CT

NDFD 2.5 km Init 02z 28 Jun 2024 • Daily Max 2m Temperature (°F) Valid: 28 Jun 2024



High Temps
Today

Houston Pilots: sat. 6/29/2024



Forecast Discussion

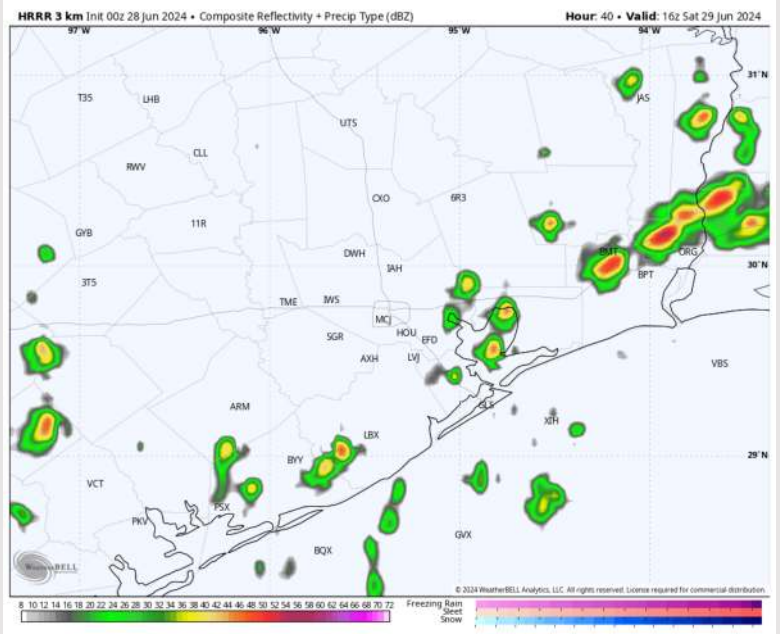
Precip: Isolated (10%) light showers can be possible so 4AM before chances work out until 11AM. Scattered to widespread showers/storms favored to begin starting at 11 AM and continue through 6 PM. Favoring dry conditions throughout the rest of SAT.

Wind: Winds will be out of the S/SE throughout the day. **N of Morgan's Point:** Winds will be at 5 – 9 kts through 2 PM before increasing to 8 – 13 kts for the remainder of the overnight. **S of Morgan's Point:** Winds at 15 – 20 kts from through 4AM, before decreasing to 10 – 15 kts by 7 AM and remaining there for the rest of the day. **Non-thunderstorms wind gusts of 20-25 kts will be possible through 7AM and again from 3 PM – 7 PM.**

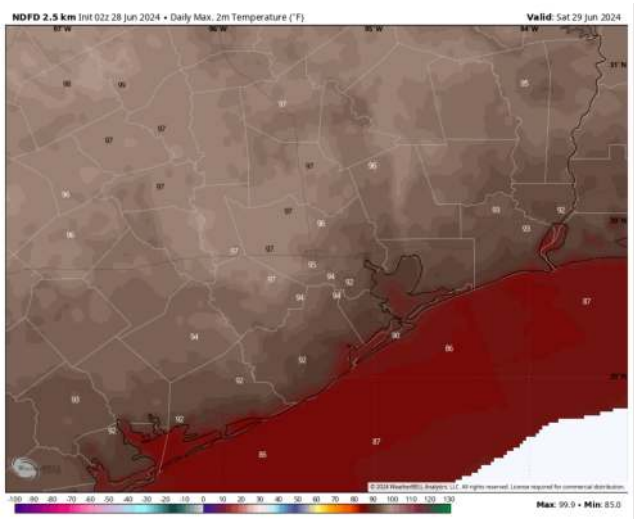
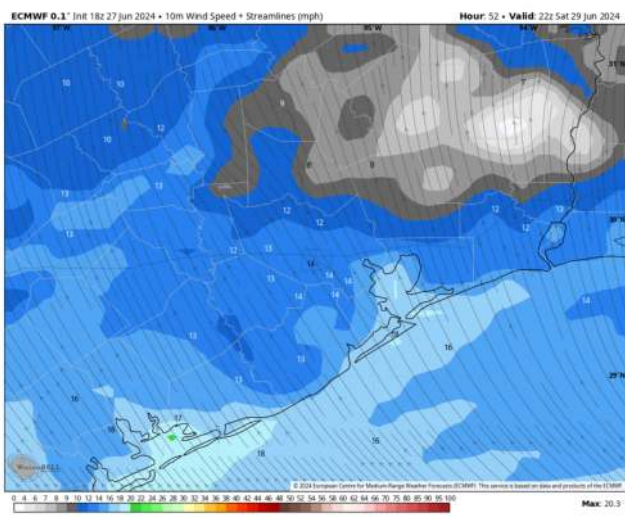
High Temps: **N of Morgan's Point:** Mid to upper 90s F. **S of Morgan's Point:** Mid to upper 80s F

Visibility: Not anticipating any fog concerns for Saturday.

Precip Image: 11 AM CT



Wind Speed:
5 PM CT



High Temps
Saturday

Houston Pilots: Sun. 6/30/2024



Forecast Discussion

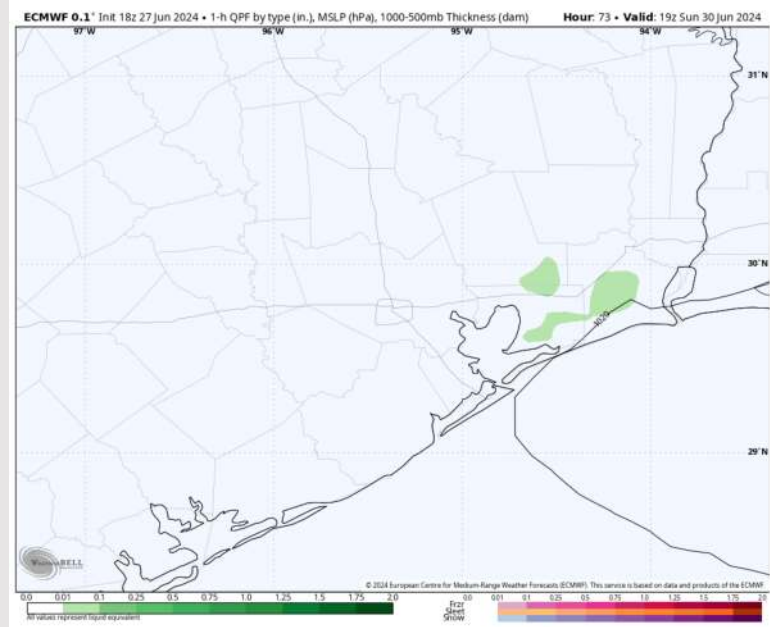
Precip: Favoring dry conditions throughout much of the day aside from isolated (10%) chances between 2PM – 4PM.

Wind: Winds out of the S/SW throughout the day. **N of Morgan's Point:** Winds at 3 - 8 kts through the day. **S of Morgan's Point:** Winds at 10 - 15 kts until 3 AM, then decreasing to 5-10 kts for the remainder of the day. **Cannot rule out an isolated 25-30 kts gust in thunderstorms.**

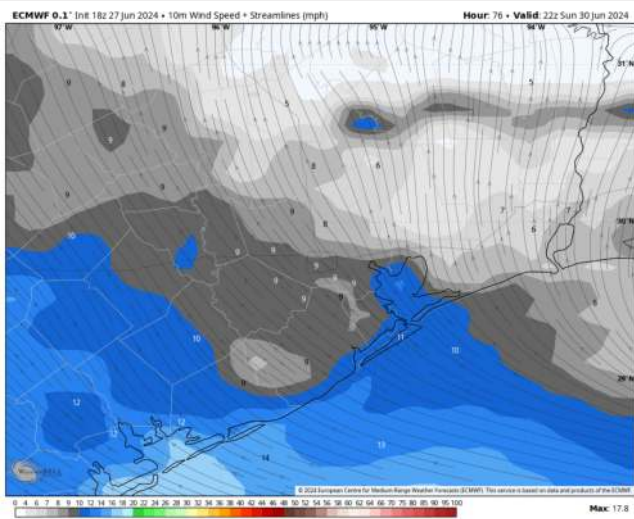
Low Temps: **N of Morgan's Point:** Upper 90s F. **S of Morgan's Point:** Upper 80s F

Visibility: Not anticipating any fog concerns for Sunday.

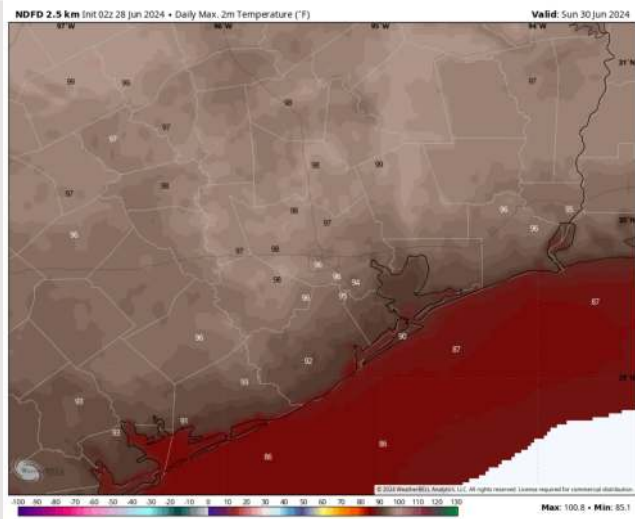
Precip Image: 2 PM CT



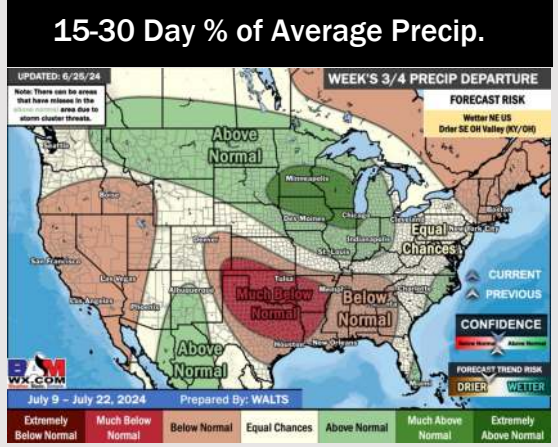
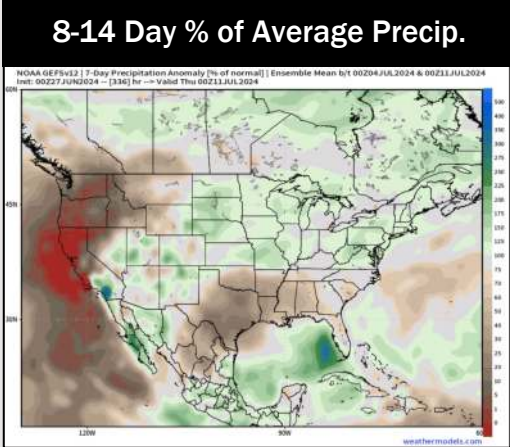
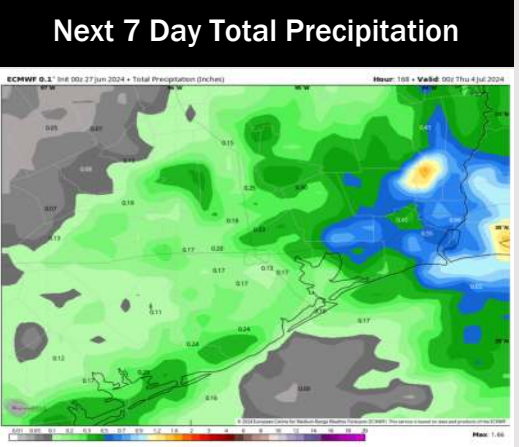
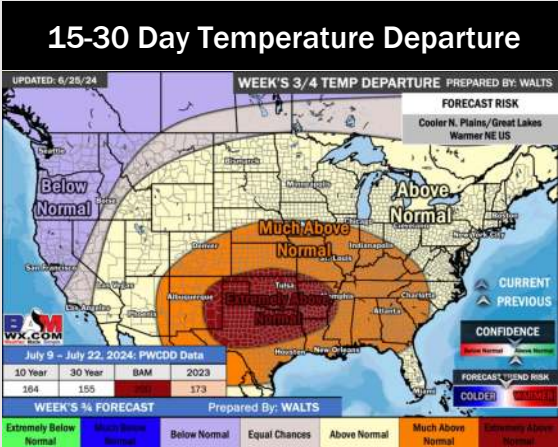
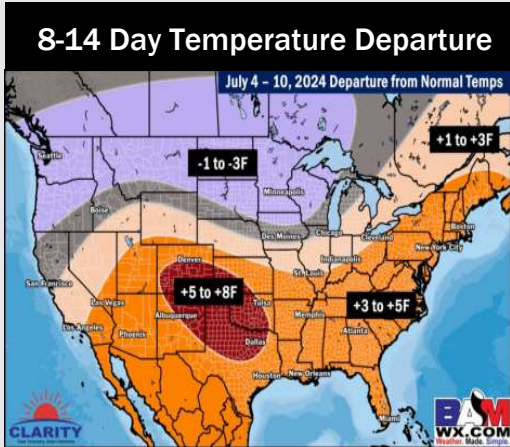
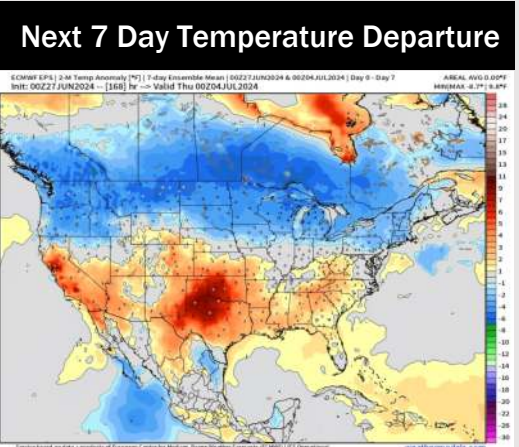
Wind Speed:
5 PM CT



High Temps
Sunday



Houston Pilots: 6/26/24



- Temps are expected to be above normal for the week 1 timeframe. A drier week with only scattered rain/storm chances favored throughout.
- Well below normal precipitation chances are at play during the week 2 timeframe, with the exception of any tropical activity. However, confidence is low in this development. Temps are expected to be above normal for week 2.
- Much below normal chances for precipitation and above normal temperatures are favored in the weeks 3/4 timeframe.