

# Houston Pilots Forecast Package



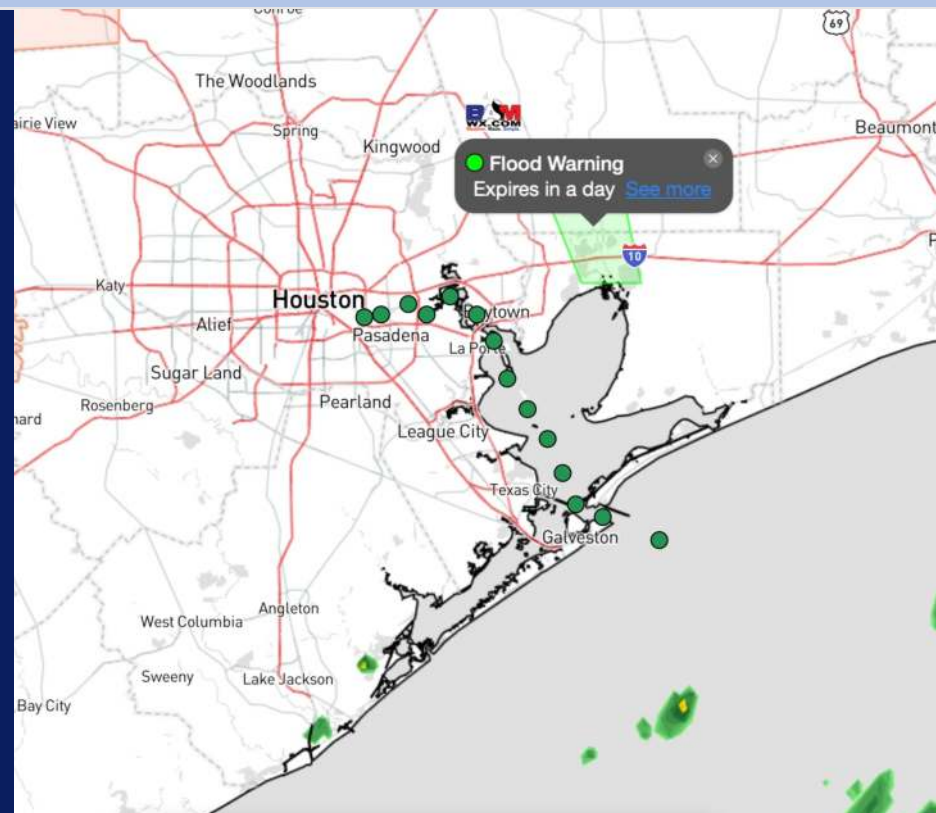
Updated: 12:30 PM CT

Thursday, June 27, 2024

Forecaster: Hope Kleitsch

## Weather Headlines

- Isolated thunderstorm chances through to 10 PM with potential wind gusts of 25 – 30 kts embedded.
- Scattered rain chances lie ahead going into the weekend. Not much accumulation is expected.
- Monitoring the low-end potential for possible Tropical Activity. See Tropical Slide for more info.



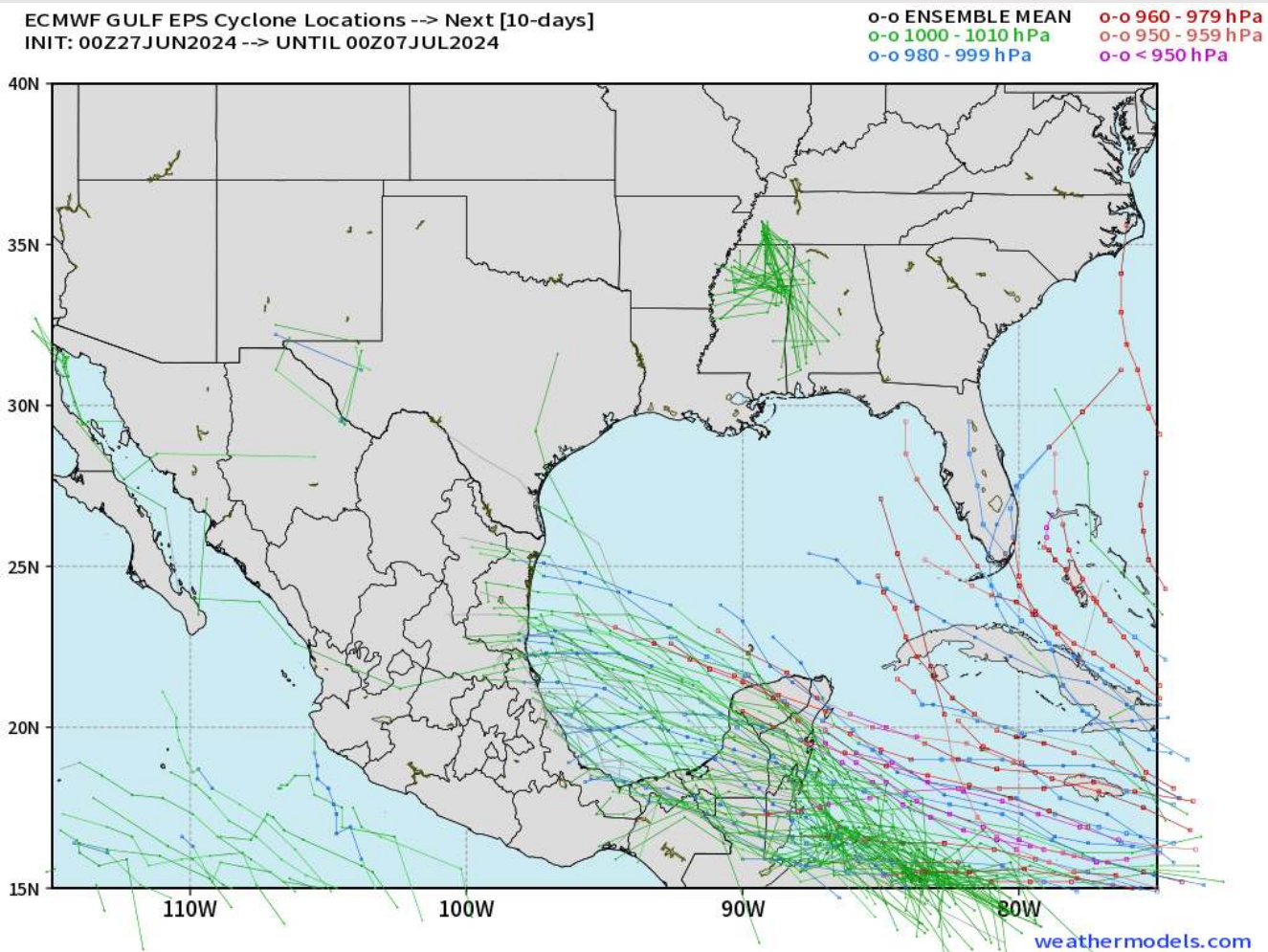
Current Radar: 12:30 PM CT



As always, please do not hesitate to reach out to us with any forecast questions via the chat option on Clarity or our on-call number, **(317)-560-8122** press 1 for forecast questions.

# Houston Pilots Tropical Update

## European Model Next 10 Days - Tropical Tracks



Monitoring an area of interest currently located off the W Coast of Africa.

With confidence remaining low at this distance, data is providing a possible signal for a Tropical Storm/Low-end Hurricane in the Caribbean/Gulf of Mexico.

Timeframe to be monitored is ~ July 6 - July 10.

# Houston Pilots Visibility Chart (miles)



## Forecast Confidence



| Time              | Thu 1pm | Thu 2pm | Thu 3pm | Thu 4pm | Thu 5pm | Thu 6pm | Thu 7pm | Thu 8pm | Thu 9pm | Thu 10pm | Thu 11pm | Fri 12am | Fri 1am | Fri 2am | Fri 3am | Fri 4am | Fri 5am | Fri 6am | Fri 7am | Fri 8am | Fri 9am | Fri 10am | Fri 11am | Fri 12pm |
|-------------------|---------|---------|---------|---------|---------|---------|---------|---------|---------|----------|----------|----------|---------|---------|---------|---------|---------|---------|---------|---------|---------|----------|----------|----------|
| 610 Bridge        | 10      | 10      | 10      | 10      | 10      | 10      | 10      | 10      | 10      | 10       | 10       | 10       | 10      | 10      | 10      | 10      | 9       | 9       | 6       | 7       | 10      | 10       | 10       | 10       |
| Kinder 1          | 10      | 10      | 10      | 10      | 10      | 10      | 10      | 10      | 10      | 10       | 10       | 10       | 10      | 10      | 10      | 10      | 9       | 9       | 6       | 7       | 10      | 10       | 10       | 10       |
| Greens Bayou      | 10      | 10      | 10      | 10      | 10      | 10      | 10      | 10      | 10      | 10       | 10       | 10       | 10      | 10      | 10      | 10      | 9       | 9       | 6       | 7       | 10      | 10       | 10       | 10       |
| Shell Crude       | 10      | 10      | 10      | 10      | 10      | 10      | 10      | 10      | 10      | 10       | 10       | 10       | 10      | 10      | 10      | 10      | 9       | 9       | 6       | 7       | 10      | 10       | 10       | 10       |
| Lynchburg Ferries | 10      | 10      | 10      | 10      | 10      | 10      | 10      | 10      | 10      | 10       | 10       | 10       | 10      | 10      | 10      | 10      | 9       | 9       | 6       | 7       | 10      | 10       | 10       | 10       |
| Exxon 3           | 10      | 10      | 10      | 10      | 10      | 10      | 10      | 10      | 10      | 10       | 10       | 10       | 10      | 10      | 10      | 10      | 9       | 9       | 6       | 7       | 10      | 10       | 10       | 10       |
| Morgans Point     | 10      | 10      | 10      | 10      | 10      | 10      | 10      | 10      | 10      | 10       | 10       | 10       | 10      | 10      | 10      | 10      | 9       | 9       | 6       | 7       | 10      | 10       | 10       | 10       |
| 75/76             | 10      | 10      | 10      | 10      | 10      | 10      | 10      | 10      | 10      | 10       | 10       | 10       | 10      | 10      | 10      | 10      | 10      | 10      | 6       | 7       | 10      | 10       | 10       | 10       |
| 63/64             | 10      | 10      | 10      | 10      | 10      | 10      | 10      | 10      | 10      | 10       | 10       | 10       | 10      | 10      | 10      | 10      | 10      | 10      | 6       | 7       | 10      | 10       | 10       | 10       |
| 51/52             | 10      | 10      | 10      | 10      | 10      | 10      | 10      | 10      | 10      | 10       | 10       | 10       | 10      | 10      | 10      | 10      | 10      | 10      | 6       | 7       | 10      | 10       | 10       | 10       |
| 37/38             | 10      | 10      | 10      | 10      | 10      | 10      | 10      | 10      | 10      | 10       | 10       | 10       | 10      | 10      | 10      | 10      | 10      | 10      | 6       | 7       | 10      | 10       | 10       | 10       |
| 25/26             | 10      | 10      | 10      | 10      | 10      | 10      | 10      | 10      | 10      | 10       | 10       | 10       | 10      | 10      | 10      | 10      | 10      | 10      | 7       | 7       | 10      | 10       | 10       | 10       |
| 11/12             | 10      | 10      | 10      | 10      | 10      | 10      | 10      | 10      | 10      | 10       | 10       | 10       | 10      | 10      | 10      | 10      | 10      | 10      | 6       | 7       | 10      | 10       | 10       | 10       |
| 1 & 2 Bravo       | 10      | 10      | 10      | 10      | 10      | 10      | 10      | 10      | 10      | 10       | 10       | 10       | 10      | 10      | 10      | 10      | 9       | 9       | 6       | 6       | 7       | 9        | 10       | 10       |

**NOTE: This is automated data that may/may not agree with the official BAM thinking that's found on the daily slides or special visibility report slides. This data should be used as a guide only**

# Houston Pilots Wind Chart



## Forecast Confidence



## Example

Sustained wind 13 Knots  
Gusts 18 Knots  
Wind from the N

WS: 13  
G:18  
N

| Time Knots        | Thu 1pm | Thu 2pm | Thu 3pm | Thu 4pm | Thu 5pm | Thu 6pm | Thu 7pm | Thu 8pm | Thu 9pm | Thu 10pm | Thu 11pm | Fri 12am | Fri 1am | Fri 2am | Fri 3am | Fri 4am | Fri 5am | Fri 6am | Fri 7am | Fri 8am | Fri 9am | Fri 10am | Fri 11am | Fri 12pm |
|-------------------|---------|---------|---------|---------|---------|---------|---------|---------|---------|----------|----------|----------|---------|---------|---------|---------|---------|---------|---------|---------|---------|----------|----------|----------|
| 610 Bridge        | 3       | 3       | 3       | 4       | 5       | 5       | 5       | 5       | 5       | 5        | 5        | 4        | 4       | 4       | 4       | 3       | 3       | 3       | 3       | 3       | 4       | 5        | 5        | 6        |
|                   | 6       | 7       | 8       | 9       | 9       | 10      | 10      | 10      | 9       | 10       | 10       | 10       | 10      | 9       | 8       | 8       | 7       | 6       | 6       | 7       | 8       | 10       | 12       | 13       |
|                   | W       | SSW     | S       | SSE     | SSE     | SSE     | SSE     | S       | S       | S        | S        | SSW      | SSW     | SSW     | SSW     | SSW     | SSW     | SSW     | SSW     | SSW     | SW      | SSW      | SSW      | SSW      |
| Kinder 1          | 3       | 3       | 3       | 4       | 5       | 5       | 5       | 5       | 5       | 5        | 5        | 4        | 4       | 4       | 3       | 3       | 3       | 3       | 3       | 3       | 4       | 5        | 5        | 6        |
|                   | 6       | 8       | 8       | 9       | 9       | 10      | 9       | 10      | 9       | 10       | 9        | 9        | 10      | 9       | 8       | 8       | 7       | 6       | 6       | 7       | 8       | 10       | 12       | 13       |
|                   | WNW     | SW      | S       | SSE     | SSE     | SSE     | SSE     | S       | S       | S        | S        | SSW      | SSW     | SSW     | SSW     | SSW     | SSW     | SSW     | SSW     | SSW     | SW      | SSW      | SSW      | S        |
| Greens Bayou      | 3       | 3       | 4       | 4       | 5       | 5       | 5       | 5       | 5       | 5        | 4        | 4        | 4       | 4       | 3       | 3       | 3       | 3       | 3       | 3       | 3       | 5        | 5        | 6        |
|                   | 7       | 8       | 9       | 9       | 9       | 10      | 9       | 10      | 9       | 9        | 9        | 9        | 9       | 8       | 8       | 8       | 7       | 6       | 7       | 8       | 10      | 12       | 13       |          |
|                   | W       | S       | S       | SSE     | SSE     | SE      | S       | S       | S       | S        | S        | SSW      | SSW     | SSW     | SSW     | SSW     | SSW     | SSW     | SSW     | SSW     | SW      | SSW      | SSW      | SSW      |
| Shell Crude       | 3       | 3       | 4       | 5       | 5       | 5       | 5       | 5       | 5       | 5        | 4        | 4        | 4       | 3       | 3       | 3       | 3       | 3       | 3       | 3       | 4       | 5        | 5        | 6        |
|                   | 7       | 8       | 8       | 9       | 10      | 10      | 9       | 10      | 9       | 9        | 9        | 9        | 9       | 8       | 8       | 8       | 7       | 6       | 6       | 7       | 8       | 10       | 12       | 13       |
|                   | WNW     | S       | SSE     | SSE     | SSE     | SSE     | S       | S       | S       | S        | S        | SSW      | SSW     | SSW     | SSW     | SSW     | SSW     | SSW     | SSW     | SSW     | SW      | SSW      | SSW      | SSW      |
| Lynchburg Ferries | 3       | 3       | 4       | 5       | 5       | 5       | 5       | 5       | 4       | 4        | 4        | 3        | 4       | 3       | 3       | 3       | 3       | 3       | 3       | 3       | 5       | 5        | 6        |          |
|                   | 7       | 8       | 9       | 9       | 10      | 10      | 9       | 9       | 9       | 8        | 8        | 9        | 9       | 8       | 8       | 8       | 7       | 6       | 6       | 7       | 8       | 10       | 12       | 13       |
|                   | W       | SSE     | SSE     | SSE     | SSE     | SE      | S       | S       | S       | S        | S        | SSW      | SSW     | SSW     | SSW     | SSW     | SSW     | SSW     | SSW     | SW      | SSW     | SSW      | SSW      | SSW      |
| Exxon 3           | 3       | 4       | 5       | 6       | 7       | 7       | 7       | 7       | 7       | 7        | 7        | 7        | 7       | 7       | 7       | 6       | 5       | 5       | 5       | 5       | 6       | 7        | 7        | 8        |
|                   | 7       | 8       | 10      | 11      | 11      | 11      | 11      | 11      | 11      | 11       | 11       | 11       | 11      | 11      | 10      | 10      | 9       | 8       | 8       | 9       | 10      | 11       | 12       | 14       |
|                   | W       | SE      | SSE     | SSE     | SSE     | SSE     | S       | S       | S       | S        | SSW      | SSW      | SSW     | SSW     | SSW     | SSW     | SW      | SW      | SW      | SW      | SW      | SSW      | SSW      | SSW      |
| Morgans Point     | 3       | 4       | 5       | 7       | 7       | 7       | 7       | 7       | 7       | 7        | 7        | 7        | 7       | 7       | 7       | 6       | 6       | 5       | 5       | 5       | 6       | 6        | 7        | 8        |
|                   | 7       | 8       | 10      | 11      | 11      | 11      | 11      | 11      | 11      | 11       | 11       | 11       | 11      | 11      | 10      | 10      | 9       | 8       | 8       | 9       | 10      | 11       | 12       | 14       |
|                   | SSE     | SE      | SSE     | SSE     | S       | S       | S       | S       | S       | S        | SSW      | SSW      | SSW     | SSW     | SW      | SW      | SW      | SSW     | SSW     | SW      | SW      | SSW      | SSW      | S        |
| 75/76             | 3       | 4       | 5       | 7       | 7       | 8       | 8       | 9       | 9       | 9        | 8        | 8        | 9       | 8       | 8       | 7       | 7       | 7       | 6       | 7       | 7       | 7        | 7        | 8        |
|                   | 7       | 8       | 10      | 11      | 11      | 12      | 12      | 12      | 12      | 13       | 12       | 12       | 13      | 12      | 12      | 11      | 10      | 10      | 10      | 10      | 11      | 12       | 13       | 15       |
|                   | SSE     | SE      | SSE     | SSE     | S       | S       | S       | S       | S       | SSW      | SSW      | SSW      | SSW     | SSW     | SW      | SW      | SW      | SW      | SW      | SW      | SW      | SSW      | SSW      | S        |
| 63/64             | 3       | 4       | 5       | 6       | 7       | 7       | 8       | 8       | 9       | 9        | 9        | 9        | 9       | 8       | 8       | 8       | 7       | 7       | 7       | 7       | 7       | 7        | 7        | 9        |
|                   | 7       | 8       | 10      | 11      | 11      | 11      | 12      | 12      | 12      | 13       | 13       | 13       | 13      | 12      | 12      | 11      | 11      | 10      | 10      | 10      | 11      | 12       | 13       | 15       |
|                   | SE      | SE      | SSE     | S       | S       | S       | S       | S       | SSW     | SSW      | SSW      | SSW      | SW      | SW      | SW      | SW      | SW      | SW      | SW      | SW      | SW      | SW       | SSW      | S        |
| 51/52             | 3       | 4       | 5       | 7       | 7       | 8       | 9       | 9       | 9       | 9        | 9        | 9        | 9       | 9       | 9       | 8       | 8       | 7       | 7       | 7       | 7       | 7        | 8        | 9        |
|                   | 7       | 8       | 10      | 11      | 11      | 12      | 13      | 12      | 12      | 13       | 13       | 13       | 13      | 13      | 13      | 12      | 12      | 11      | 11      | 11      | 12      | 13       | 13       | 15       |
|                   | SE      | SSE     | SSE     | S       | S       | S       | SSW     | SSW     | SSW     | SSW      | SSW      | SSW      | SSW     | SW      | SW      | SW      | SW      | SW      | SW      | SW      | SW      | SSW      | SSW      | S        |
| 37/38             | 3       | 4       | 5       | 7       | 7       | 8       | 9       | 9       | 9       | 9        | 9        | 9        | 9       | 9       | 9       | 9       | 8       | 7       | 7       | 7       | 7       | 8        | 9        | 9        |
|                   | 7       | 8       | 10      | 11      | 11      | 12      | 13      | 12      | 12      | 13       | 13       | 13       | 13      | 13      | 13      | 12      | 12      | 11      | 11      | 12      | 12      | 13       | 13       | 15       |
|                   | SSE     | S       | S       | S       | S       | S       | SSW     | SSW     | SSW     | SSW      | SSW      | SSW      | SSW     | SW      | SW      | SW      | SW      | SW      | SW      | SW      | SW      | SSW      | SSW      | S        |
| 25/26             | 4       | 5       | 6       | 7       | 7       | 8       | 9       | 9       | 9       | 9        | 9        | 9        | 9       | 9       | 9       | 9       | 8       | 8       | 7       | 7       | 7       | 8        | 9        | 9        |
|                   | 7       | 8       | 10      | 11      | 11      | 12      | 13      | 12      | 12      | 13       | 13       | 13       | 13      | 13      | 13      | 13      | 12      | 12      | 12      | 12      | 12      | 13       | 13       | 15       |
|                   | S       | S       | S       | S       | S       | S       | SSW     | SSW     | SSW     | SSW      | SSW      | SSW      | SSW     | SSW     | SW      | SW      | SW      | SW      | SW      | SW      | SSW     | SSW      | SSW      | SSW      |
| 11/12             | 5       | 5       | 6       | 7       | 7       | 8       | 8       | 8       | 8       | 8        | 8        | 8        | 8       | 8       | 8       | 8       | 7       | 7       | 7       | 7       | 7       | 8        | 9        | 9        |
|                   | 8       | 8       | 10      | 11      | 11      | 12      | 12      | 12      | 12      | 13       | 13       | 13       | 13      | 13      | 13      | 13      | 12      | 12      | 12      | 12      | 12      | 13       | 13       | 15       |
|                   | S       | S       | S       | S       | S       | S       | SSW     | SSW     | SSW     | SSW      | SSW      | SSW      | SSW     | SSW     | SSW     | SW      | SW      | SW      | SW      | SW      | SW      | SSW      | SSW      | SSW      |
| 1 & 2 Bravo       | 5       | 5       | 6       | 7       | 7       | 8       | 9       | 9       | 9       | 9        | 9        | 9        | 10      | 10      | 10      | 10      | 10      | 9       | 9       | 9       | 9       | 9        | 9        | 9        |
|                   | 8       | 8       | 10      | 11      | 11      | 12      | 13      | 13      | 13      | 14       | 14       | 13       | 14      | 14      | 14      | 14      | 15      | 14      | 14      | 13      | 13      | 13       | 14       | 15       |
|                   | SSW     | SSW     | S       | S       | S       | SSW     | SSW     | SSW     | SSW     | SSW      | SSW      | SSW      | SSW     | SSW     | SSW     | SW      | SW      | SW      | SW      | SW      | SW      | SW       | SSW      | SSW      |

**NOTE: This is automated data that may/may not agree with the official BAM thinking that's found on the daily slides. This data should be used as a guide only.**

# Houston Pilots: Thu. 6/27/2024



## Forecast Discussion

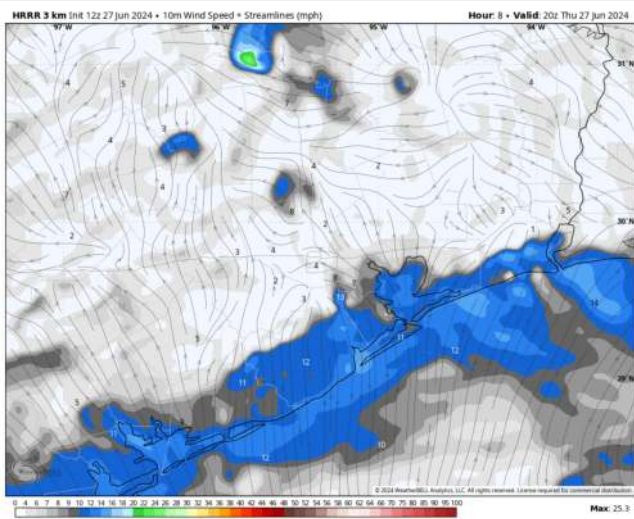
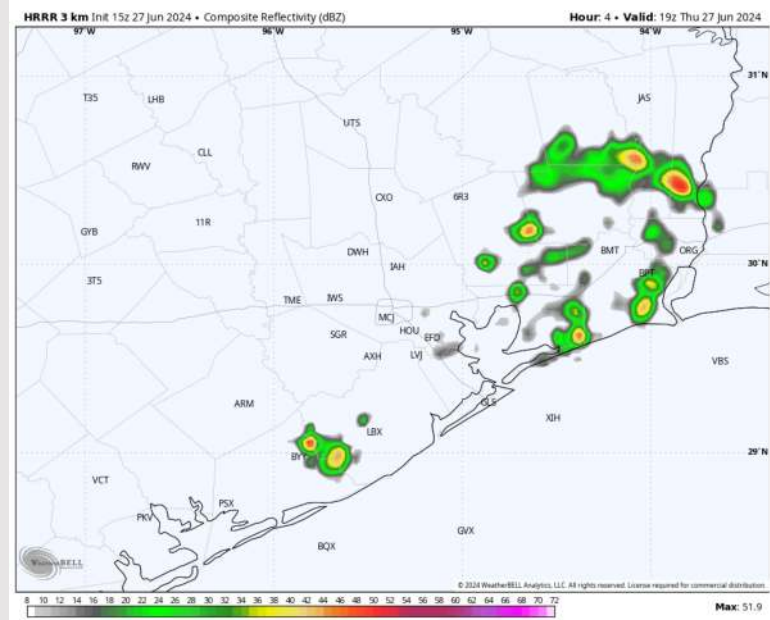
**Precip:** Isolated showers and thunderstorms (20%) continue through 10 PM. Dry conditions are favored for the remainder of the night.

**Wind:** Winds out of the S/SW throughout the day. **N of Morgan's Point:** Winds at 3 - 11 kts through the rest of the day. **S of Morgan's Point:** Winds at 5 - 11 kts until 2 PM, increasing to 11-18 kts after that and through the remainder of the overnight. **Cannot rule out an isolated 25-30 kts gust in thunderstorms.**

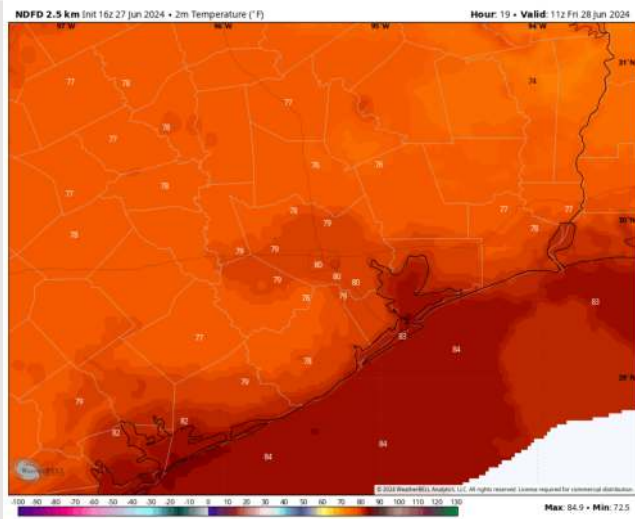
**Low Temps:** **N of Morgan's Point:** Upper 70s to low 80s F. **S of Morgan's Point:** Lower 80s F

**Visibility:** Not anticipating any fog concerns for today.

## Precip Image: 2 PM CT



Wind Speed:  
3 PM CT



Low Temps  
FRI AM

# Houston Pilots: Fri. 6/28/2024



## Forecast Discussion

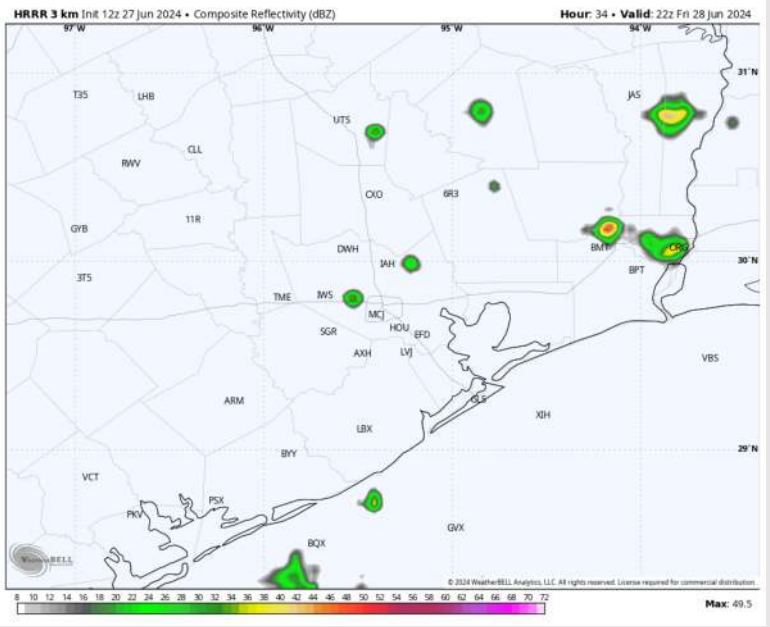
**Precip:** Hit/Miss (10%) light showers possible between 7 AM – 6 PM, then favoring dry conditions through the remainder of the overnight.

**Wind:** Winds expected to be out of the SW throughout Friday. **N of Morgan's Point:** Favoring winds at 3 - 8 kts through 2PM. Increasing slightly to 8 - 13 through the remainder of the night. **S of Morgan's Point:** Favoring winds at 8 - 11 kts through 3 PM, increasing to 12 - 19 kts after that time.

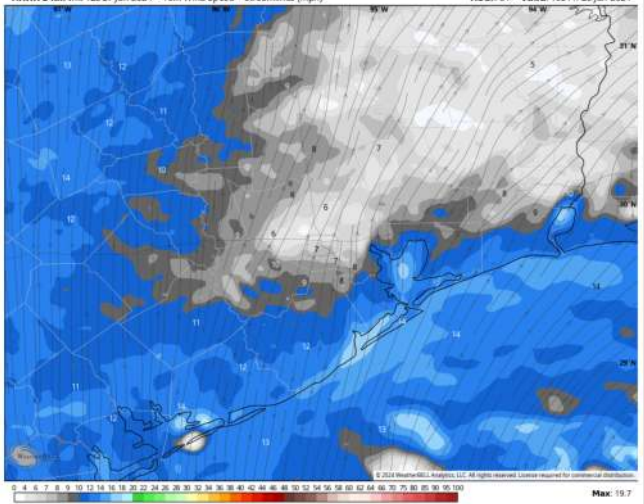
**High Temps:** **N of Morgan's Point:** Mid 90s F. **S of Morgan's Point:** Upper 80s F

**Visibility:** Not favoring any fog concerns for Friday.

## Precip Image: 1 PM CT

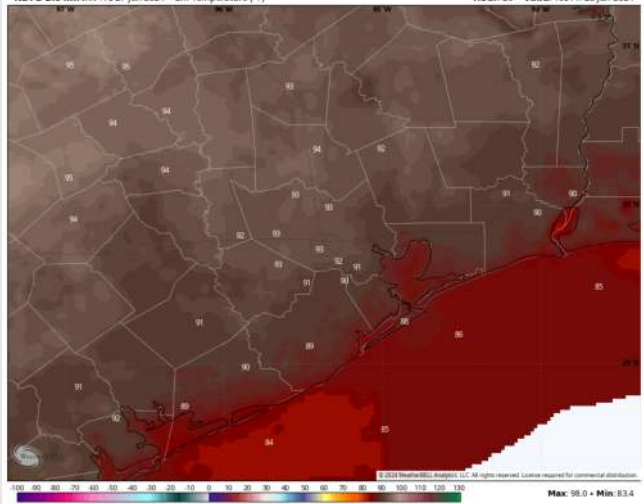


HRRR 3 km Init 12z 27 Jun 2024 • 10m Wind Speed + Streamlines (mph) Hour: 31 • Valid: 19z Fri 28 Jun 2024



Wind Speed  
2 PM CT

NDFD 2.5 km Init 17z 27 Jun 2024 • 2m Temperature (°F) Hour: 26 • Valid: 19z Fri 28 Jun 2024



High Temps  
Friday

# Houston Pilots: sat. 6/29/2024



## Forecast Discussion

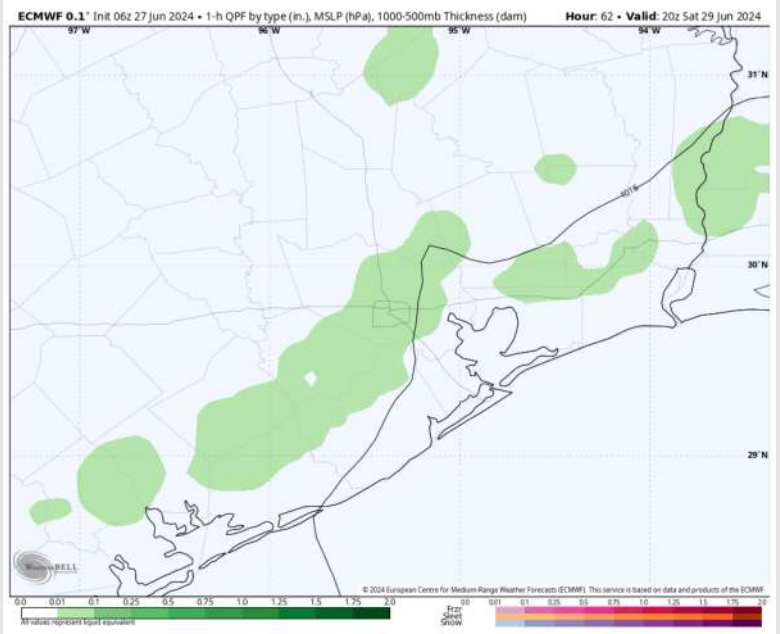
**Precip:** Scattered to widespread showers/storms favored to begin starting at 12 PM and continue through 6 PM. Favoring dry conditions throughout the rest of SAT.

**Wind:** Winds will be out of the S/SE throughout the day. **N of Morgan's Point:** Winds will be at 5 – 14 kts through 9 PM before decreasing to 3 – 8 kts for the remainder of the overnight. **S of Morgan's Point:** Winds at 15 – 20 kts from 1 AM – 5 AM, decreasing to 10 – 15 kts by 6 AM and remaining there for the rest of the day. **Non-thunderstorms wind gusts of 20-25 kts will be possible through 7AM and again from 3 PM – 7 PM.**

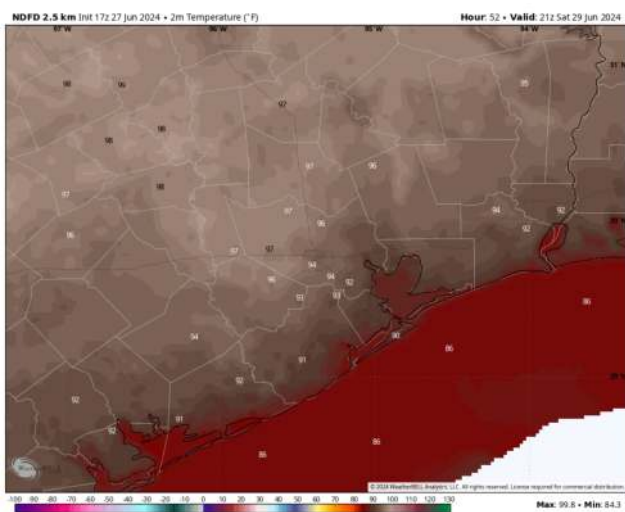
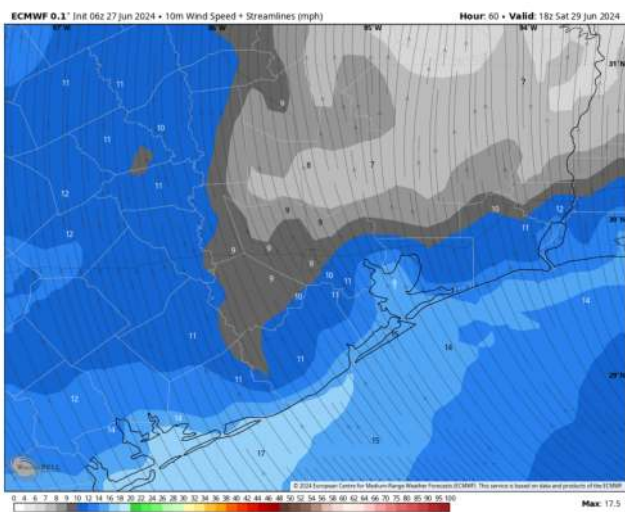
**High Temps:** **N of Morgan's Point:** Mid to upper 90s F. **S of Morgan's Point:** Mid to upper 80s F

**Visibility:** Not anticipating any fog concerns for Saturday.

## Precip Image: 3 PM CT

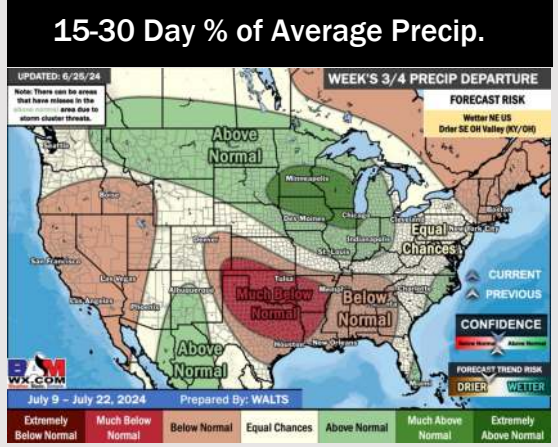
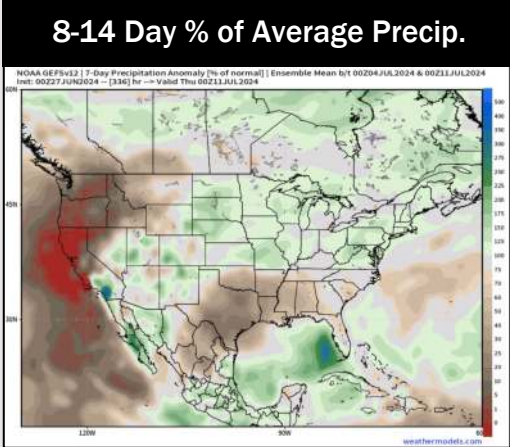
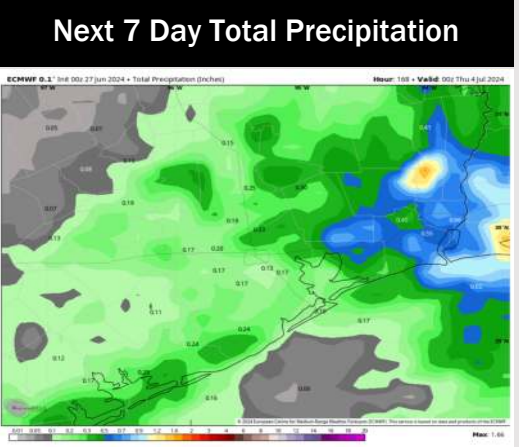
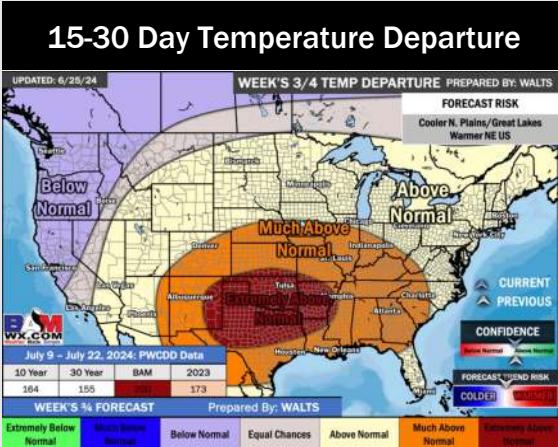
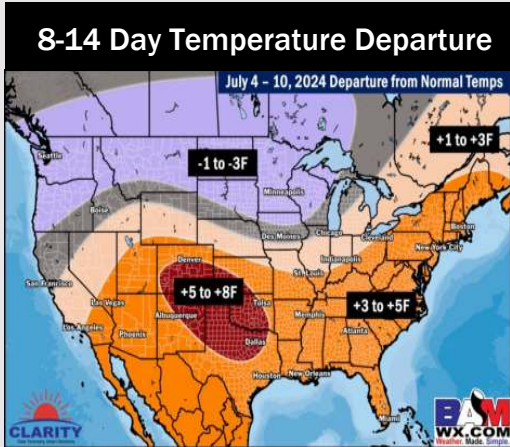
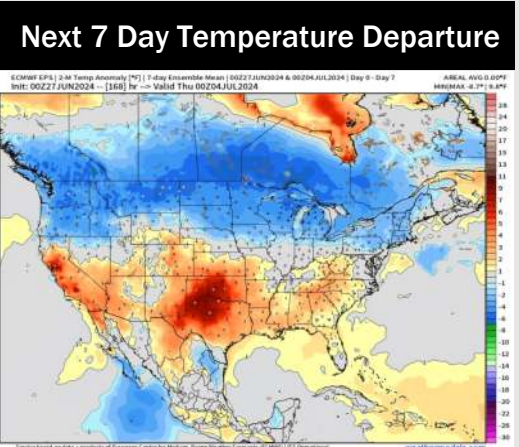


Wind Speed:  
1 PM CT



High Temps  
Saturday

# Houston Pilots: 6/26/24



- Temps are expected to be above normal for the week 1 timeframe. A drier week with only scattered rain/storm chances favored throughout.
- Well below normal precipitation chances are at play during the week 2 timeframe, with the exception of any tropical activity. However, confidence is low in this development. Temps are expected to be above normal for week 2.
- Much below normal chances for precipitation and above normal temperatures are favored in the weeks 3/4 timeframe.