

Houston Pilots Forecast Package

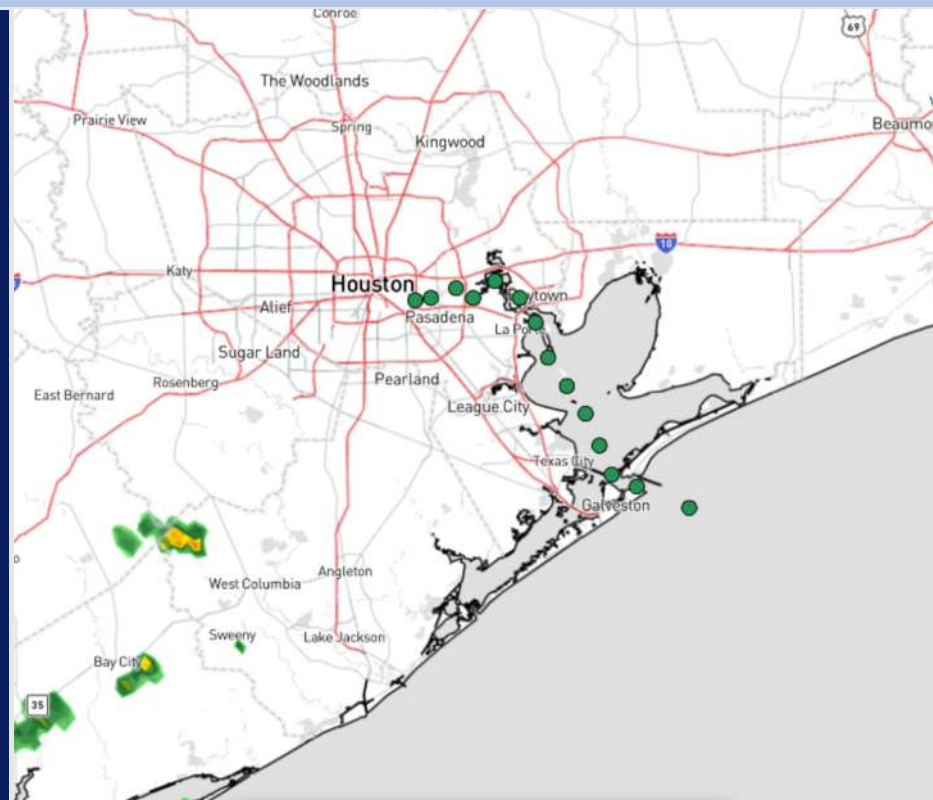


Updated: 12:30 PM CT
Sunday, June 23, 2024

Forecaster: Hope Kleitsch

Weather Headlines

- Outside of isolated rain chances, favoring a dry beginning to the week overall.
- Wave heights favored to remain below 3ft into the beginning of the week.
- Winds will remain calmer through the beginning of the week with max sustained winds not expected to exceed 17 kts.



Current Radar: 12:30 PM CT



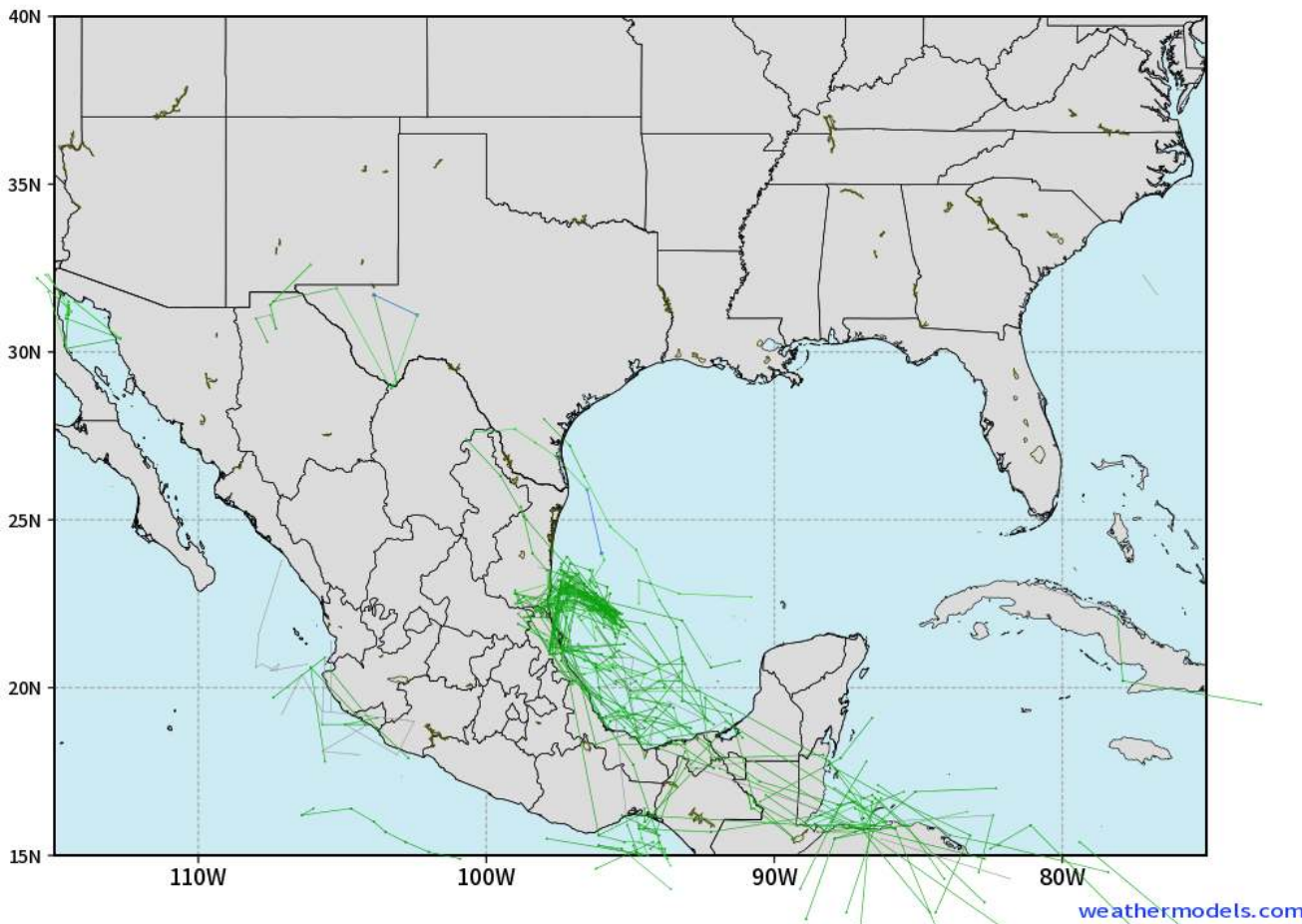
As always, please do not hesitate to reach out to us with any forecast questions via the chat option on Clarity or our on-call number, **(317)-560-8122** press **1** for forecast questions.

Houston Pilots Tropical Update

European Model Next 10 Days - Tropical Tracks

ECMWF GULF EPS Cyclone Locations --> Next [10-days]
INIT: 00Z23JUN2024 --> UNTIL 00Z03JUL2024

o-o ENSEMBLE MEAN
o-o 1000 - 1010 hPa
o-o 980 - 999 hPa
o-o 960 - 979 hPa
o-o 950 - 959 hPa
o-o < 950 hPa



Monitoring a weak Tropical Depression in the far SW portion of the Gulf of Mexico through 6/24

Not favoring a direct impact with the Houston area.

Houston Pilots Visibility Chart (miles)



Forecast Confidence



Time	Sun 1pm	Sun 2pm	Sun 3pm	Sun 4pm	Sun 5pm	Sun 6pm	Sun 7pm	Sun 8pm	Sun 9pm	Sun 10pm	Sun 11pm	Mon 12am	Mon 1am	Mon 2am	Mon 3am	Mon 4am	Mon 5am	Mon 6am	Mon 7am	Mon 8am	Mon 9am	Mon 10am	Mon 11am	Mon 12pm
610 Bridge	10	10	10	10	10	10	10	10	10	10	10	10	10	10	10	10	9	9	6	10	10	10	10	10
Kinder 1	10	10	10	10	10	10	10	10	10	10	10	10	10	10	10	10	10	9	6	10	10	10	10	10
Greens Bayou	10	10	10	10	10	10	10	10	10	10	10	10	10	10	10	10	9	9	6	10	10	10	10	10
Shell Crude	10	10	10	10	10	10	10	10	10	10	10	10	10	10	10	10	10	9	6	10	10	10	10	10
Lynchburg Ferries	10	10	10	10	10	10	10	10	10	10	10	10	10	10	10	10	9	9	6	10	10	10	10	10
Exxon 3	10	10	10	10	10	10	10	10	10	10	10	10	10	10	10	10	10	9	6	10	10	10	10	10
Morgans Point	10	10	10	10	10	10	10	10	10	10	10	10	10	10	10	10	10	10	6	10	10	10	10	10
75/76	10	10	10	10	10	10	10	10	10	10	10	10	10	10	10	10	10	10	6	10	10	10	10	10
63/64	10	10	10	10	10	10	10	10	10	10	10	10	10	10	10	10	10	10	6	10	10	10	10	10
51/52	10	10	10	10	10	10	10	10	10	10	10	10	10	10	10	10	10	10	6	10	10	10	10	10
37/38	10	10	10	10	10	10	10	10	10	10	10	10	10	10	10	10	10	10	7	10	10	10	10	10
25/26	10	10	10	10	10	10	10	10	10	10	10	10	10	10	10	10	10	10	7	10	10	10	10	10
11/12	10	10	10	10	10	10	10	10	10	10	10	10	10	10	10	10	10	10	7	10	10	10	10	10
1 & 2 Bravo	10	10	10	10	10	10	10	10	10	10	10	10	10	10	10	10	10	10	6	9	10	10	10	10

NOTE: This is automated data that may/may not agree with the official B.A.M. thinking that's found on the daily slides or special visibility report slides. This data should be used as a guide only

Houston Pilots Wind Chart



Forecast Confidence



Example

Sustained wind 13 Knots
Gusts 18 Knots
Wind from the N

WS: 13
G:18
N

Time Knots	Sun 1pm	Sun 2pm	Sun 3pm	Sun 4pm	Sun 5pm	Sun 6pm	Sun 7pm	Sun 8pm	Sun 9pm	Sun 10pm	Sun 11pm	Mon 12am	Mon 1am	Mon 2am	Mon 3am	Mon 4am	Mon 5am	Mon 6am	Mon 7am	Mon 8am	Mon 9am	Mon 10am	Mon 11am	Mon 12pm
610 Bridge	6 13 ESE	7 13 ESE	7 13 ESE	7 14 ESE	7 14 SE	7 13 SE	7 13 SE	6 12 SSE	5 11 SSE	5 10 SSE	3 8 SSE	3 7 S	3 6 S	2 5 S	1 4 S	1 4 S	1 4 SSE	1 3 E	1 3 E	1 4 ESE	1 4 SE	2 5 SE	3 6 ESE	4 8 ESE
Kinder 1	6 13 ESE	7 13 ESE	7 14 ESE	7 14 SE	7 14 SE	7 13 SE	7 13 SE	6 12 SSE	5 11 SSE	5 10 SSE	3 8 SSE	3 7 S	3 6 S	2 5 S	1 4 S	1 4 S	1 4 SSE	1 3 E	1 3 E	1 4 ESE	1 4 SE	2 5 SE	3 6 ESE	4 8 ESE
Greens Bayou	6 12 ESE	7 12 SE	7 13 SE	7 14 SE	7 14 SE	7 13 SE	7 13 SE	6 12 SSE	5 11 SSE	4 9 SSE	3 8 SSE	3 7 S	3 6 S	2 5 S	1 4 S	1 4 S	1 3 SSE	1 3 E	1 3 SE	1 4 ESE	1 4 SE	2 5 SE	3 6 ESE	4 8 ESE
Shell Crude	6 13 ESE	7 12 SE	7 13 SE	7 14 SE	7 14 SE	7 13 SE	7 13 SE	6 12 SSE	5 11 SSE	4 9 SSE	3 8 SSE	3 7 S	3 6 S	2 5 S	1 4 S	1 4 S	1 3 S	1 3 E	1 3 E	1 4 ESE	1 4 SE	2 5 SE	3 6 ESE	4 8 ESE
Lynchburg Ferries	6 12 SE	6 12 SE	7 13 SE	7 13 SE	7 14 SE	7 13 SE	7 13 SE	6 12 SSE	5 11 SSE	4 9 SSE	3 8 SSE	3 7 S	3 6 S	2 5 S	1 4 S	1 4 S	1 3 SW	1 3 W	1 3 W	1 4 SE	1 4 SE	2 5 SE	3 6 SE	4 8 SE
Exxon 3	7 13 SE	8 14 SE	9 15 SE	9 15 SE	10 15 SSE	10 15 SSE	9 15 SSE	9 13 SSE	8 12 SSE	7 11 SSE	6 9 S	5 8 S	5 7 S	4 6 S	3 6 S	3 6 S	3 4 SSW	2 4 SSW	2 4 S	3 4 SE	3 5 SE	3 6 SE	4 7 SE	5 9 SE
Morgans Point	7 13 SE	8 14 SE	9 15 SE	10 15 SE	10 15 SSE	10 15 SSE	9 15 SSE	9 13 SSE	8 12 SSE	7 11 SSE	6 9 S	5 8 S	5 7 S	4 6 S	3 6 S	3 6 S	3 4 SSW	2 4 SSW	2 4 SSW	3 4 ESE	3 5 SE	3 6 SE	4 7 SE	5 9 SE
75/76	8 13 SE	9 14 SE	9 15 SE	10 16 SE	10 15 SSE	10 15 SSE	9 15 SSE	9 14 SSE	8 12 SSE	7 11 SSE	7 10 SSE	6 9 S	5 8 S	5 7 S	4 6 S	4 6 S	3 5 S	3 5 S	3 4 SSE	3 5 SE	3 6 SE	4 7 SE	5 8 SE	6 10 SE
63/64	8 13 SE	9 14 SE	9 15 SE	9 15 SE	9 14 SSE	9 14 SSE	9 14 SSE	9 13 SSE	8 12 SSE	7 11 SSE	7 10 SSE	6 9 S	5 8 S	5 7 S	4 6 S	4 6 S	3 5 S	3 5 SSE	3 4 SE	3 5 SE	3 6 SE	4 7 SE	5 8 SE	6 10 SE
51/52	8 13 ESE	9 14 SE	9 15 SE	9 15 SE	9 15 SE	9 14 SSE	9 14 SSE	9 13 SSE	8 12 SSE	7 11 SSE	7 10 SSE	6 9 S	5 8 S	5 7 S	4 6 S	4 6 S	3 5 SSE	3 5 SSE	3 4 SSE	3 5 SE	3 6 SE	4 7 SE	5 8 SE	6 10 SE
37/38	8 13 ESE	9 14 SE	9 15 SE	9 15 SE	9 15 SE	9 14 SSE	9 14 SSE	9 13 SSE	8 12 SSE	7 11 SSE	7 10 SSE	6 9 S	5 8 S	5 7 S	4 6 S	4 6 S	3 5 SSE	3 5 SSE	3 4 SSE	3 5 SE	3 6 SE	4 7 SE	5 8 SE	6 10 SE
25/26	9 13 ESE	9 14 ESE	9 14 ESE	9 14 ESE	9 14 SE	9 13 SE	9 13 SE	8 12 SSE	8 11 SSE	7 10 SSE	7 9 SSE	6 8 SSE	5 7 SSE	5 6 SSE	4 5 SSE	4 5 SSE	3 4 SSE	3 4 SSE	3 4 SSE	4 5 SE	4 6 SE	5 7 SE	6 8 SE	7 9 SE
11/12	9 13 ESE	9 13 ESE	9 13 ESE	9 14 ESE	9 13 SE	9 13 SE	8 13 SE	7 12 SE	7 11 SSE	7 10 SSE	7 9 SSE	6 8 SSE	5 7 SSE	5 6 SSE	4 5 SSE	4 5 SSE	3 4 SSE	3 4 SSE	3 4 SSE	4 5 SE	4 6 SE	5 7 SE	6 8 SE	7 9 SE
1 & 2 Bravo	9 13 ESE	9 13 ESE	9 13 ESE	9 13 ESE	9 13 SE	9 13 SE	9 13 SE	9 13 SE	9 12 SSE	9 12 SSE	8 12 SSE	8 11 SSE	7 10 SSE	7 9 SSE	6 8 SSE	5 7 SSE	5 6 SSE	4 5 SSE	4 5 SSE	4 5 SSE	5 6 SE	5 7 SE	6 8 SE	7 9 SE

NOTE: This is automated data that may/may not agree with the official BAM thinking that's found on the daily slides. This data should be used as a guide only.

Houston Pilots: Sun. 6/23/2024



Forecast Discussion

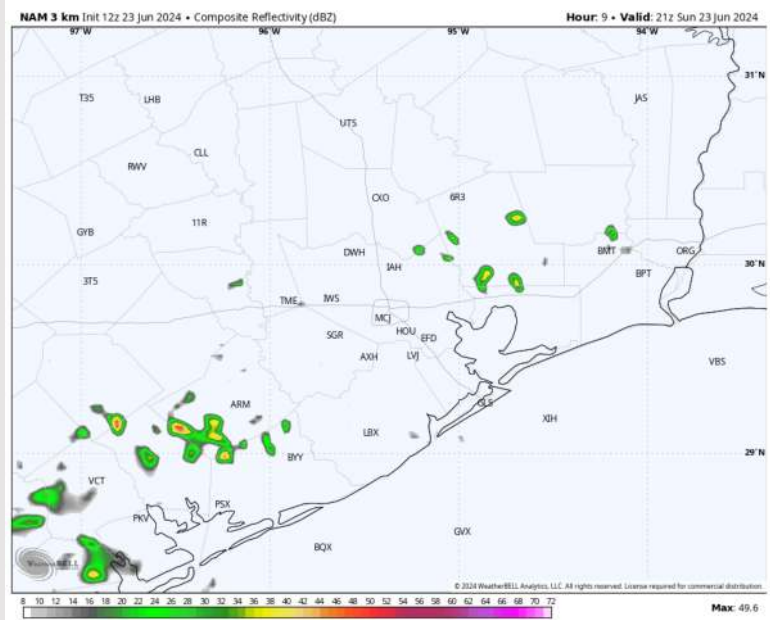
Precip: Favoring mostly dry conditions throughout the rest of the day, aside from low-end shower/thunderstorm chances between 3 – 9 PM.

Wind: Winds will be out of the SE throughout the day. **N of Morgan's Point:** Winds will be at 3-8 kts throughout the rest of the day. **S of Morgan's Point:** Winds at 8-13 kts for the evening until decreasing slightly to 4-9 kts by 1 AM and through early MON AM.

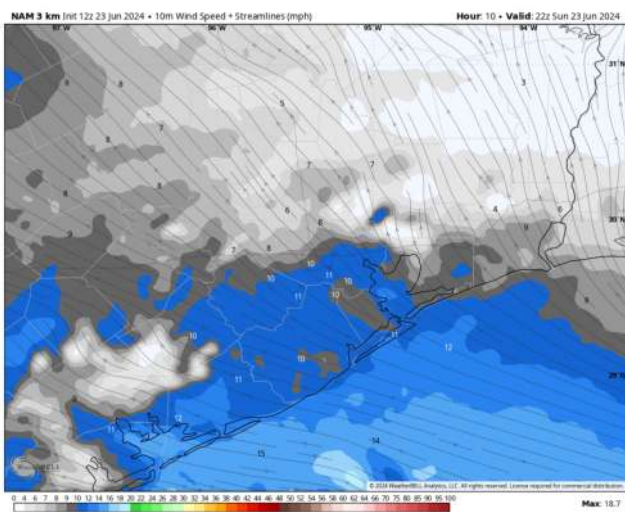
Low Temps: **N of Morgan's Point:** Upper 70s F to lower 80s F. **S of Morgan's Point:** Lower 80s F.

Visibility: Not anticipating any fog concerns for the overnight.

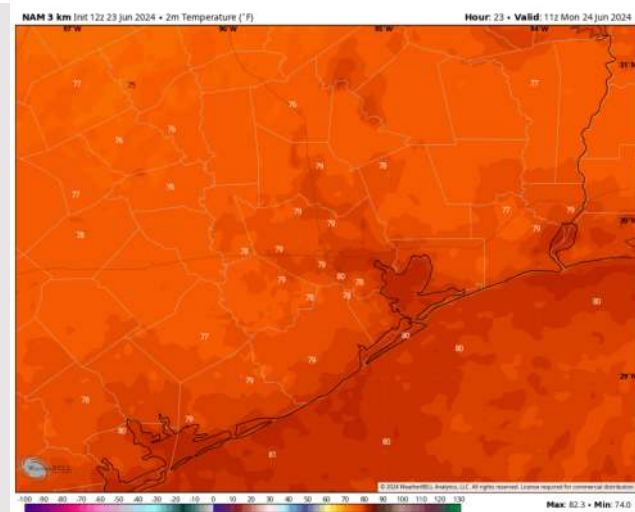
Precip Image: 4 PM CT



Wind Speed:
5 PM CT



Low Temps
MON AM



Houston Pilots: Mon. 6/24/2024



Forecast Discussion

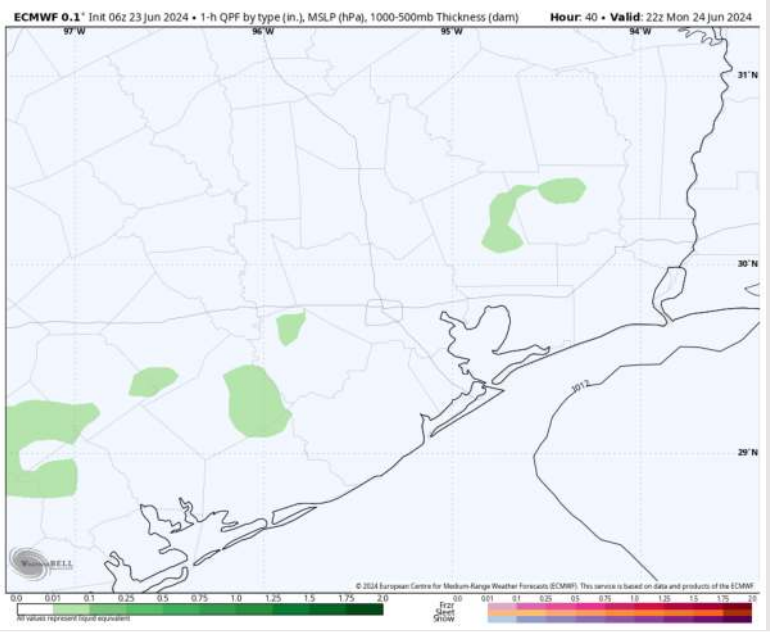
Precip: Very isolated chance of a passing shower (10%) from 2 PM - 8 PM, however most of the day will be dry. Any shower that does pass through should be light in nature.

Wind: Winds out of the S/SE throughout Monday. **N of Morgan's Point:** Winds at 3 - 8 kts through Monday. **S of Morgan's Point:** Winds at 4 - 9 kts through 4PM before increasing to 7 - 11 kts for the remainder of the day.

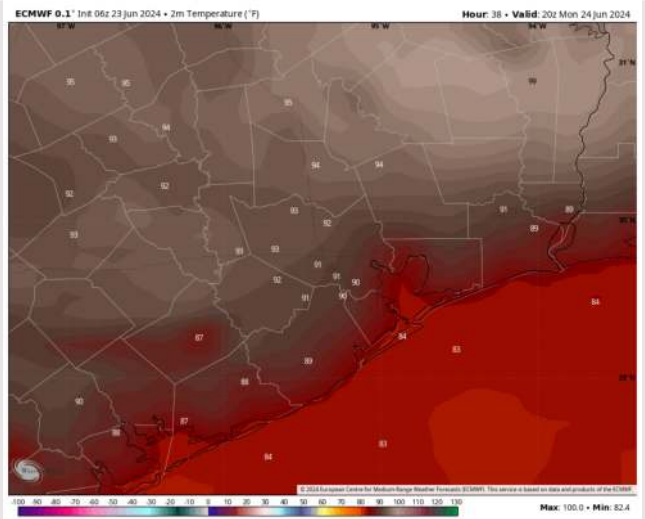
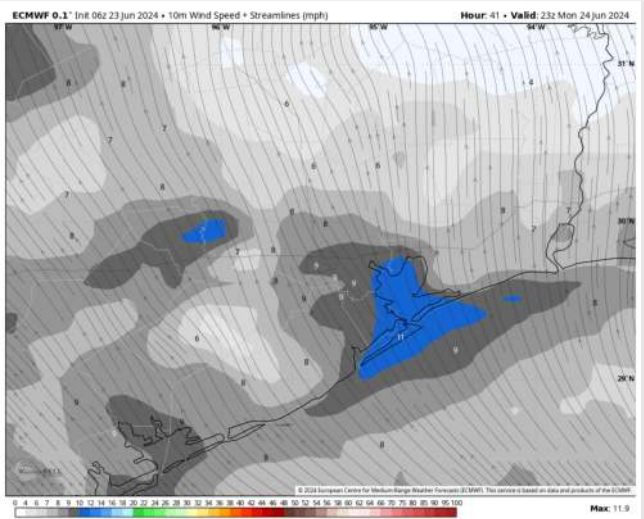
High Temps: **N of Morgan's Point:** Low-mid 90s F. **S of Morgan's Point:** Mid to upper 80s F

Visibility: Not anticipating any fog concerns for Monday.

Precip Image: 5 PM CT



Wind Speed:
6 PM CT



High Temps
Monday

Forecast Discussion

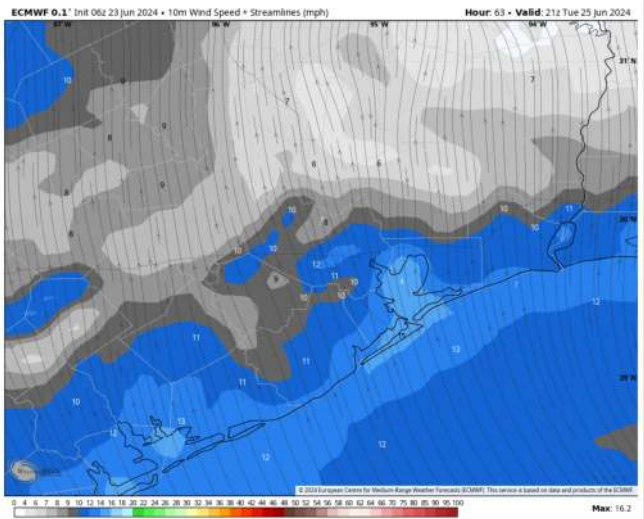
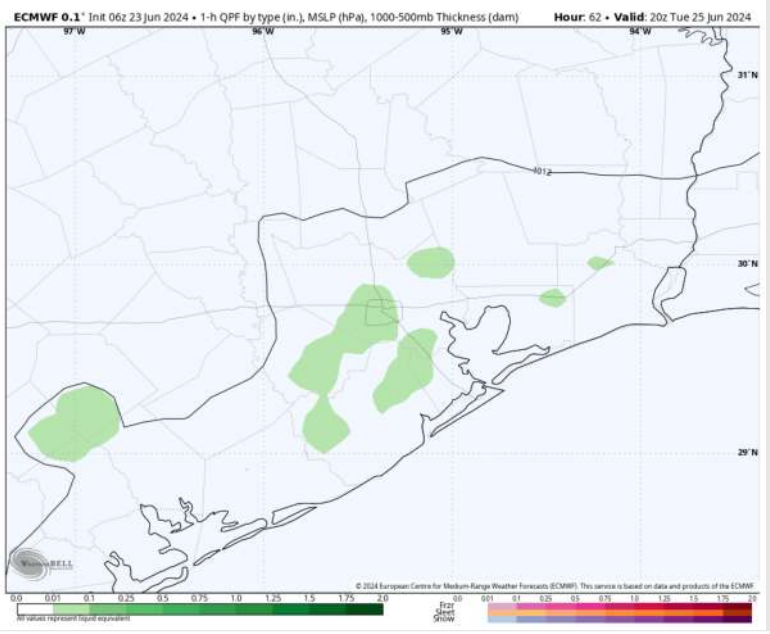
Precip: Isolated (20%) rain chances possible between 10 AM and 7 PM.

Wind: Winds expected to be out of the S/SE throughout Tuesday. **N of Morgan's Point:** Favoring winds at 3 – 8 kts through 2 PM, increasing to 6-12 kts after that time. **S of Morgan's Point:** Favoring winds at 7-17 kts throughout Tuesday

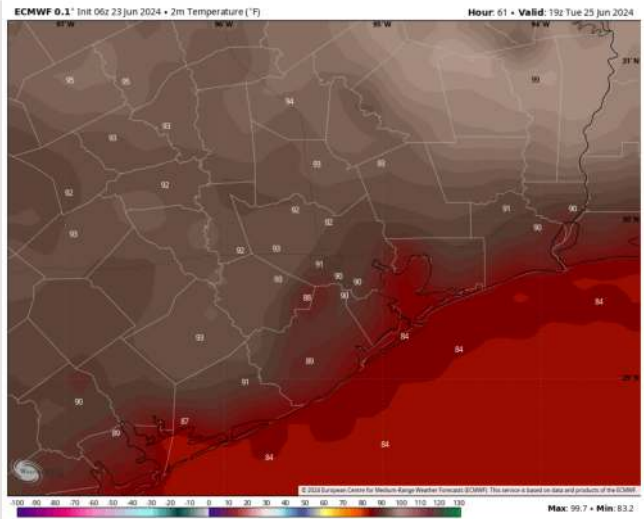
High Temps: **N of Morgan's Point:** Low 90s F. **S of Morgan's Point:** Mid to upper 80s F

Visibility: Not favoring any fog concerns for Tuesday.

Precip Image: 3 PM CT



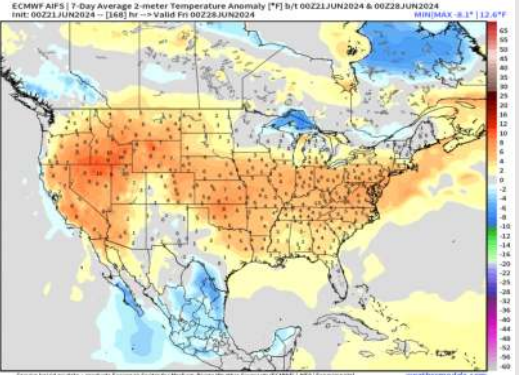
Wind Speed
4 PM CT



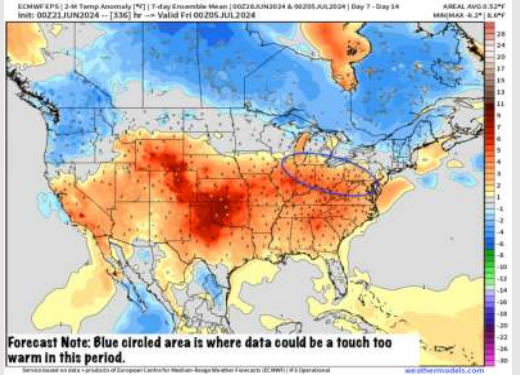
High Temps
Tuesday

Houston Pilots: 6/23/24

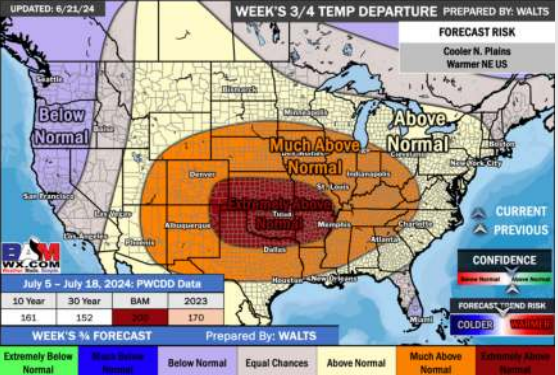
Next 7 Day Temperature Departure



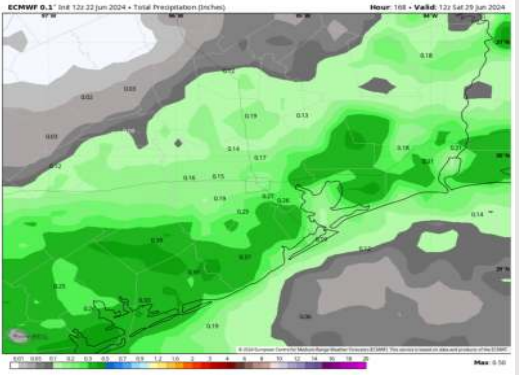
8-14 Day Temperature Departure



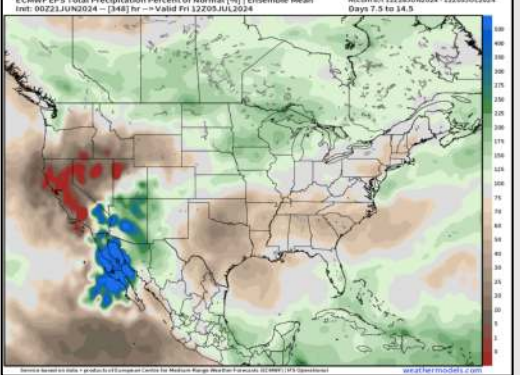
15-30 Day Temperature Departure



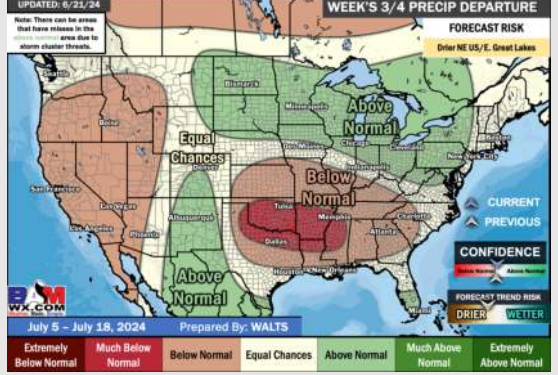
Next 7 Day Total Precipitation



8-14 Day % of Average Precip.



15-30 Day % of Average Precip.



- Temps are expected to be slightly above normal for the week 1 timeframe. The next heaviest shot of rain will move in mid to late next week.
- Below normal precipitation chances are at play during the week 2 timeframe. Temps are expected to be slightly above normal for week 2.
- Near normal chances for precipitation and Above normal temperatures are favored in the weeks 3/4 timeframe.