

Houston Pilots Forecast Package



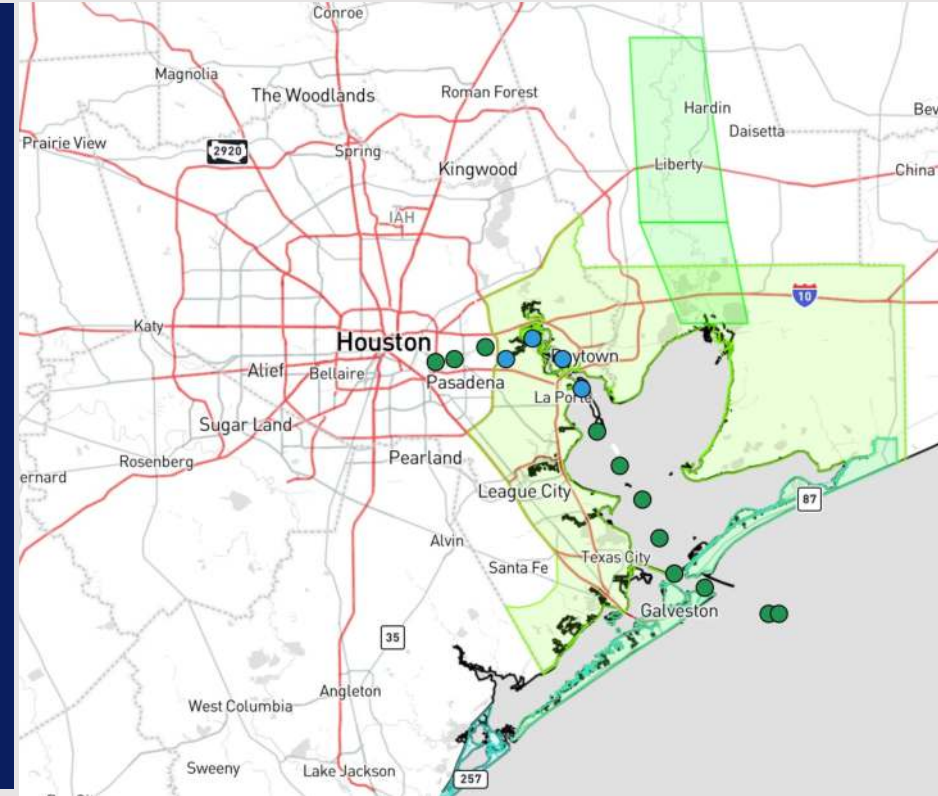
Updated: 12:50 PM CT

Saturday, June 22, 2024

Forecaster: Adam Feick

Weather Headlines

- Outside of localized chances, favoring a dry weekend overall.
- Wave heights favored to remain below 3ft through the weekend.
- Winds will be calmer through the weekend with max sustained winds not expected to exceed 15 kts.



Current Radar: 12:50 PM CT



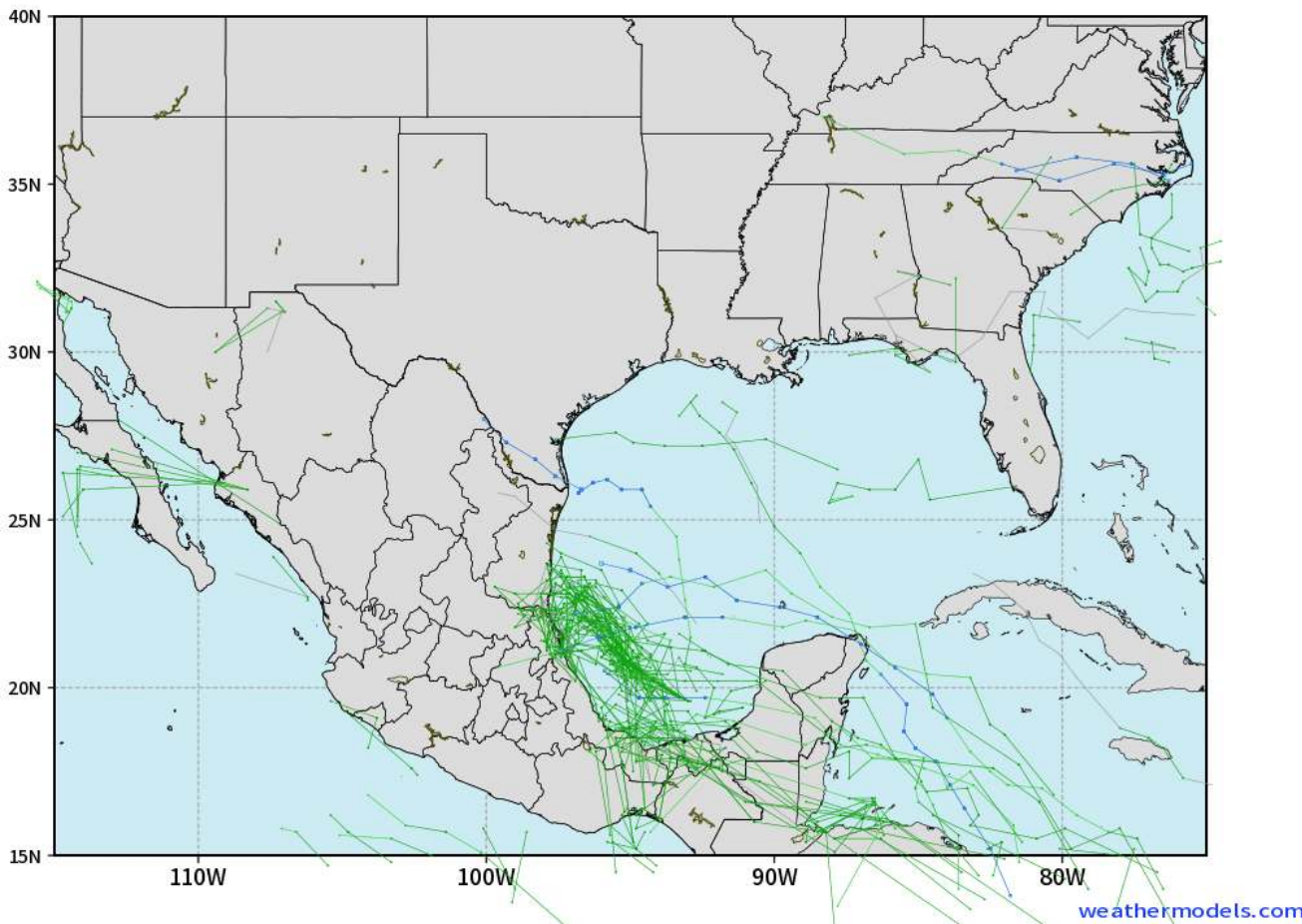
As always, please do not hesitate to reach out to us with any forecast questions via the chat option on Clarity or our on-call number, **(317)-560-8122** press **1** for forecast questions.

Houston Pilots Tropical Update

European Model Next 10 Days - Tropical Tracks

ECMWF GULF EPS Cyclone Locations --> Next [10-days]
INIT: 00Z22JUN2024 --> UNTIL 00Z02JUL2024

o-o ENSEMBLE MEAN
o-o 1000 - 1010 hPa
o-o 980 - 999 hPa
o-o 960 - 979 hPa
o-o 950 - 959 hPa
o-o < 950 hPa



Monitoring the potential for the formation of a Tropical Depression in the far SW portion of the Gulf of Mexico between 6/22 - 6/24

Not favoring a direct impact with the Houston area at this time.

Houston Pilots Visibility Chart (miles)



Time	Sat 1pm	Sat 2pm	Sat 3pm	Sat 4pm	Sat 5pm	Sat 6pm	Sat 7pm	Sat 8pm	Sat 9pm	Sat 10pm	Sat 11pm	Sun 12am	Sun 1am	Sun 2am	Sun 3am	Sun 4am	Sun 5am	Sun 6am	Sun 7am	Sun 8am	Sun 9am	Sun 10am	Sun 11am	Sun 12pm
610 Bridge	10	10	10	10	10	10	10	10	10	10	10	10	10	10	10	10	10	10	6	10	10	10	10	10
Kinder 1	10	10	10	10	10	10	10	10	10	10	10	10	10	10	10	10	10	10	6	10	10	10	10	10
Greens Bayou	10	10	10	10	10	10	10	10	10	10	10	10	10	10	10	10	10	10	6	10	10	10	10	10
Shell Crude	10	10	10	10	10	10	10	10	10	10	10	10	10	10	10	10	10	10	6	10	10	10	10	10
Lynchburg Ferries	10	10	10	10	10	10	10	10	10	10	10	10	10	10	10	10	10	10	6	10	10	10	10	10
Exxon 3	10	10	10	10	10	10	10	10	10	10	10	10	10	10	10	10	10	10	6	10	10	10	10	10
Morgans Point	10	10	10	10	10	10	10	10	10	10	10	10	10	10	10	10	10	10	6	10	10	10	10	10
75/76	10	10	10	10	10	10	10	10	10	10	10	10	10	10	10	10	10	10	8	10	10	10	10	10
63/64	10	10	10	10	10	10	10	10	10	10	10	10	10	10	10	10	10	10	8	10	10	10	10	10
51/52	10	10	10	10	10	10	10	10	10	10	10	10	10	10	10	10	10	10	8	10	10	10	10	10
37/38	10	10	10	10	10	10	10	10	10	10	10	10	10	10	10	10	10	10	8	10	10	10	10	10
25/26	10	10	10	10	10	10	10	10	10	10	10	10	10	10	10	10	10	10	9	10	10	10	10	10
11/12	10	10	10	10	10	10	10	10	10	10	10	10	10	10	10	10	10	10	9	10	10	10	10	10
1 & 2 Bravo	10	10	10	10	10	10	10	10	10	10	10	10	10	10	10	10	10	10	8	9	10	10	10	10

Houston Pilots Wind Chart



Forecast Confidence



Example

Sustained wind 13 Knots
Gusts 18 Knots
Wind from the N

WS: 13
G:18
N

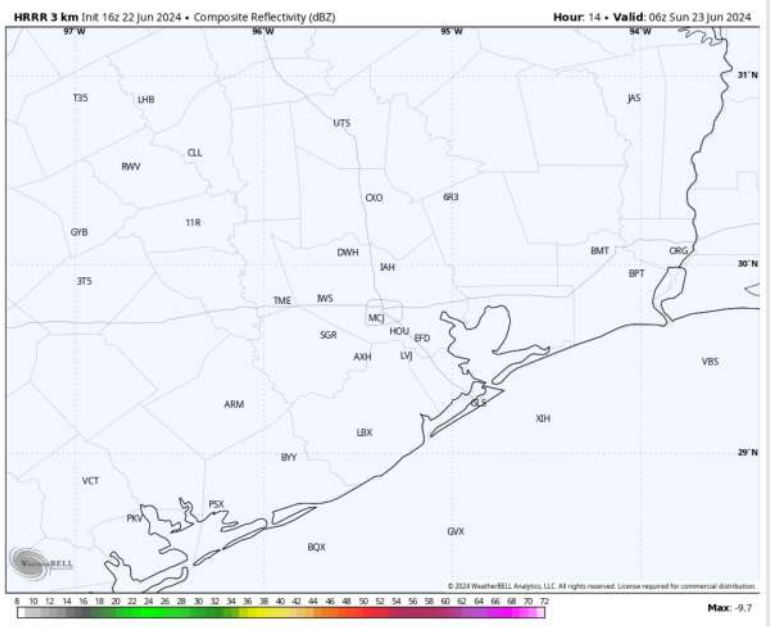
Time Knots	Sat 1pm	Sat 2pm	Sat 3pm	Sat 4pm	Sat 5pm	Sat 6pm	Sat 7pm	Sat 8pm	Sat 9pm	Sat 10pm	Sat 11pm	Sun 12am	Sun 1am	Sun 2am	Sun 3am	Sun 4am	Sun 5am	Sun 6am	Sun 7am	Sun 8am	Sun 9am	Sun 10am	Sun 11am	Sun 12pm
610 Bridge	7	7	8	8	9	8	8	7	5	4	3	3	2	2	1	1	1	1	2	2	3	3	4	5
	15	15	16	16	16	16	14	13	10	8	7	6	5	5	5	4	4	5	6	6	8	8	9	9
	E	ESE	ESE	ESE	SE	SE	SE	SE	SE	SSE	SSE	SSE	SE	ESE	E	ENE	NE	NE	NE	ENE	E	ESE	ESE	ESE
Kinder 1	7	7	8	8	9	8	7	7	5	4	3	3	2	2	1	1	1	1	2	2	3	3	4	5
	15	15	16	16	16	16	14	13	10	8	7	6	5	5	5	4	4	5	6	6	8	8	10	10
	E	ESE	ESE	ESE	SE	SE	SE	SE	SE	SE	SSE	SSE	SSE	ESE	E	ENE	NE	NE	NE	ENE	E	ESE	ESE	ESE
Greens Bayou	7	7	8	8	8	8	7	6	5	4	3	3	2	2	1	1	1	1	2	2	2	3	4	5
	14	15	15	15	16	15	14	13	10	8	7	6	5	5	4	4	4	4	5	5	6	6	8	9
	ESE	ESE	ESE	SE	SE	SE	SE	SE	SE	SSE	SSE	SSE	SSE	SE	E	ENE	NE	NNE	NE	ENE	E	ESE	ESE	ESE
Shell Crude	7	7	8	8	8	8	7	6	5	4	3	3	2	2	2	1	1	1	2	2	3	3	4	5
	14	15	15	15	16	15	14	13	10	8	7	6	5	5	5	4	4	4	5	5	6	6	8	10
	ESE	ESE	ESE	SE	SE	SE	SE	SE	SE	SSE	SSE	SSE	SSE	SE	ESE	E	NE	NE	NE	ENE	E	ESE	ESE	ESE
Lynchburg Ferries	7	7	8	8	8	8	7	6	5	4	3	2	2	1	1	1	1	1	2	2	2	3	3	5
	14	15	15	15	16	15	14	13	10	8	6	6	5	4	4	4	4	4	5	5	5	6	8	9
	ESE	ESE	SE	SE	SE	SE	SE	SSE	SE	SSE	SSE	SSE	SSE	SE	ESE	ENE	NNE	NE	NE	ENE	E	ESE	SE	SE
Exxon 3	9	9	10	11	11	11	10	9	8	7	6	5	5	4	4	3	3	3	4	4	4	5	5	5
	15	15	16	17	17	17	15	13	12	10	9	8	8	7	6	6	6	6	7	7	7	7	8	10
	ESE	SE	SE	SE	SE	SE	SE	SE	SE	SSE	SE	SSE	SSE	SSE	SSE	ESE	E	ENE	NE	ENE	E	ESE	SE	SE
Morgans Point	9	9	10	11	11	11	10	9	8	7	6	5	5	5	4	4	3	3	4	4	4	5	5	6
	15	15	16	17	17	17	15	13	12	10	9	8	8	7	6	7	6	6	7	7	8	8	9	11
	ESE	SE	SE	SE	SE	SE	SE	SE	SE	SE	SE	SSE	SSE	SSE	SSE	SSE	ESE	ENE	NE	ENE	E	ESE	SE	SE
75/76	9	10	11	11	11	11	11	10	9	8	7	7	6	5	5	5	5	5	5	5	5	5	6	6
	16	16	17	18	18	17	16	14	13	12	10	10	9	8	8	8	8	7	8	8	8	9	10	11
	ESE	ESE	SE	SE	SE	SE	SE	SE	SE	SE	SE	SSE	SSE	SSE	SSE	SSE	SE	ESE	E	E	E	ESE	ESE	SE
63/64	9	10	11	11	11	11	11	9	8	7	7	7	6	5	5	5	5	5	5	5	5	5	6	7
	16	16	17	17	18	17	16	14	13	12	11	10	9	8	8	8	8	8	8	8	8	9	10	12
	ESE	ESE	ESE	SE	SE	SE	SE	SE	SE	SE	SE	SSE	SSE	SSE	SSE	SE	SE	SE	ESE	ESE	ESE	ESE	ESE	SE
51/52	10	11	11	11	11	11	10	9	9	8	7	7	7	6	6	6	5	5	5	5	5	6	7	7
	17	17	17	18	17	17	15	14	13	12	11	10	10	9	9	8	8	8	8	8	8	10	10	12
	E	ESE	ESE	ESE	ESE	SE	SE	SE	SE	SE	SE	SE	SE	SE	SE	SE	SE	SE	ESE	ESE	E	ESE	ESE	ESE
37/38	10	11	11	11	11	11	10	9	9	8	8	7	7	7	6	6	5	5	5	5	6	6	7	7
	17	17	17	17	17	16	15	14	13	12	11	11	10	9	9	9	8	8	8	9	9	10	10	12
	E	ESE	ESE	ESE	ESE	ESE	SE	SE	SE	SE	SE	SE	SE	SE	SE	SE	SE	ESE	ESE	E	ESE	ESE	ESE	ESE
25/26	11	11	11	11	11	10	10	9	9	8	7	7	7	7	6	6	6	5	5	5	6	6	7	7
	17	17	17	17	17	16	15	13	13	12	11	11	10	9	9	9	8	8	8	9	9	10	11	12
	E	E	ESE	ESE	ESE	ESE	ESE	SE	SE	SE	SE	SE	SE	SE	SE	SE	SE	ESE	ESE	E	ESE	ESE	ESE	ESE
11/12	11	11	11	11	11	10	9	9	8	7	7	7	7	6	6	6	5	5	5	5	5	6	7	7
	17	17	16	17	16	16	15	13	13	12	11	11	10	10	9	9	8	8	8	9	9	10	10	12
	E	E	E	ESE	ESE	ESE	ESE	SE	SE	SE	SE	SE	SE	SE	SE	SE	SE	ESE	ESE	ESE	ESE	ESE	ESE	ESE
1 & 2 Bravo	11	11	11	11	11	11	11	10	9	9	9	9	8	8	7	7	7	7	7	7	7	7	7	7
	17	17	17	17	17	17	16	14	14	14	13	13	12	11	11	10	10	9	9	10	10	11	11	12
	E	E	E	ESE	ESE	ESE	ESE	ESE	SE	SE	SE	SE	SE	SE	SE	SE	SE	ESE	ESE	ESE	ESE	E	ESE	ESE

NOTE: This is automated data that may/may not agree with the official BAM thinking that's found on the daily slides. This data should be used as a guide only.

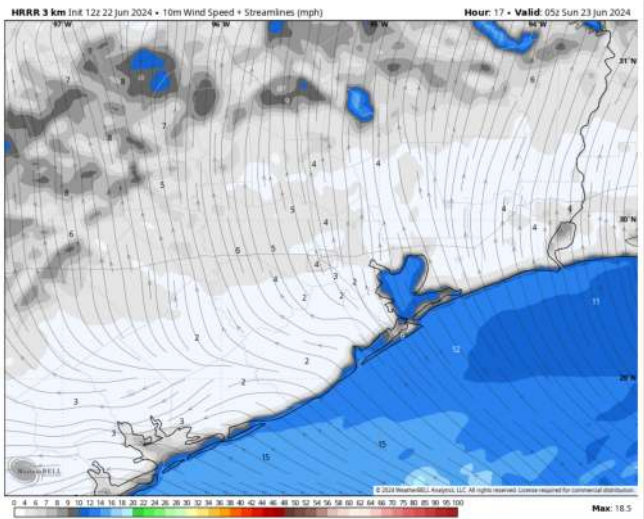
Forecast Discussion

- Precip:** Favoring dry conditions throughout today.
- Wind:** Winds will be out of the E/ESE through the overnight hours.
- N of Morgan's Point:** Favoring winds at 3 – 8 kts overnight
- S of Morgan's Point:** Favoring winds at 10-14 kts tonight
- Low Temps:** N of Morgan's Point: Upper 70'sF. S of Morgan's Point: Low 80s F.
- Visibility:** Not favoring any fog concerns for overnight into tomorrow Am

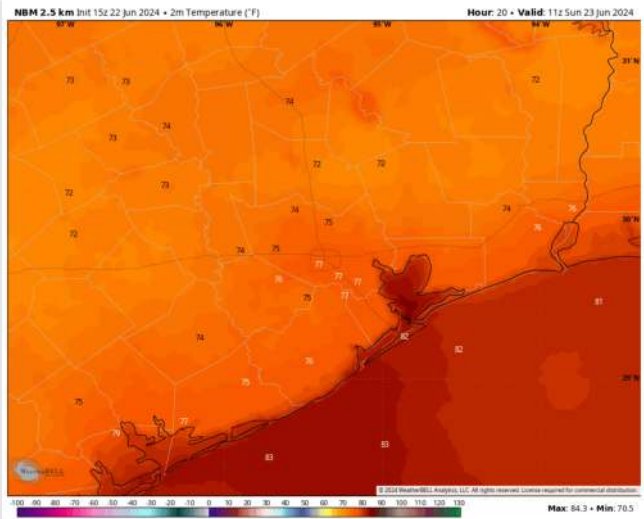
Precip Image: 1 AM CT



Wind Speed
12 AM CT



Low Temps
Tonight



Houston Pilots: Sun. 6/23/2024



Forecast Discussion

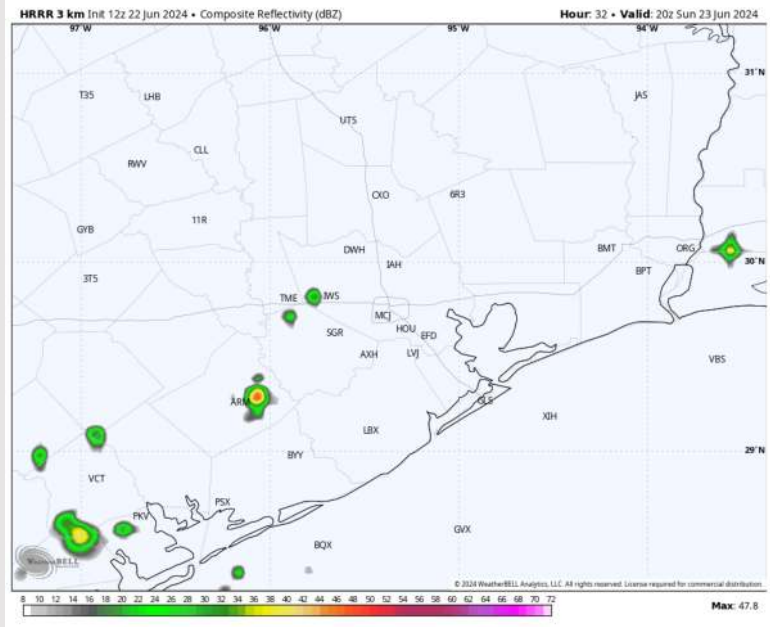
Precip: Favoring mostly dry conditions throughout the day on Sunday, aside from low-end shower/thunderstorm chances between 4 – 8 PM. Majority of activity favored to remain to the W.

Wind: Winds will be out of the SE throughout the day. **N of Morgan's Point:** Winds will be at 3-8 kts throughout Sunday. **S of Morgan's Point:** Winds at 5-8 kts through 2PM before increasing 8-13 kts throughout the evening.

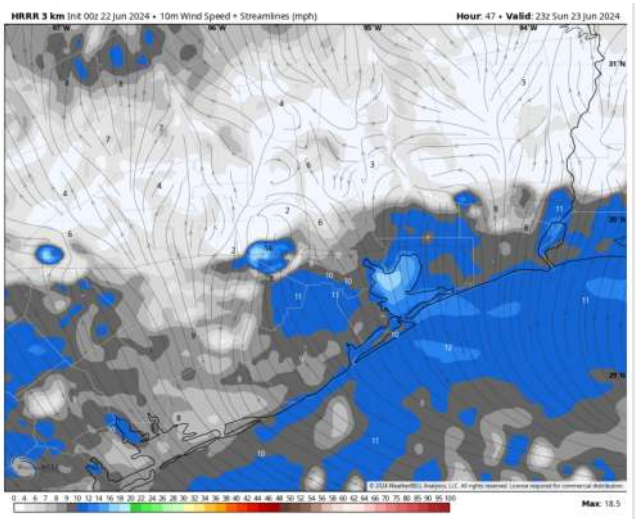
High Temps: **N of Morgan's Point:** Low 90s F. **S of Morgan's Point:** Mid to upper 80s F.

Visibility: Not anticipating any fog concerns for Sunday.

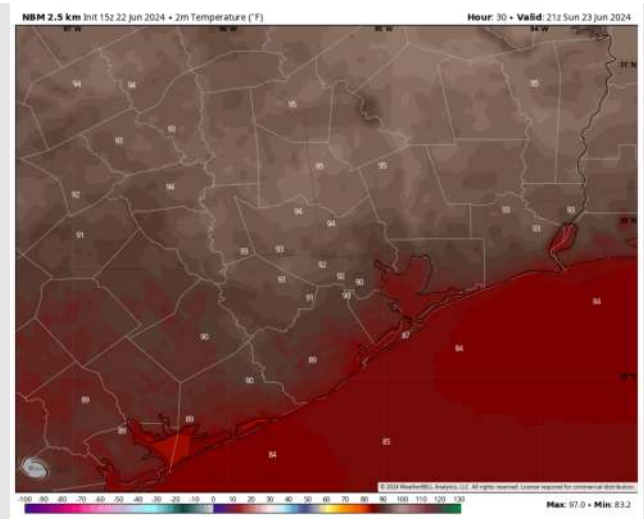
Precip Image: 3 PM CT



Wind Speed:
6 PM CT



High Temps
Sunday



Houston Pilots: Mon. 6/24/2024



Forecast Discussion

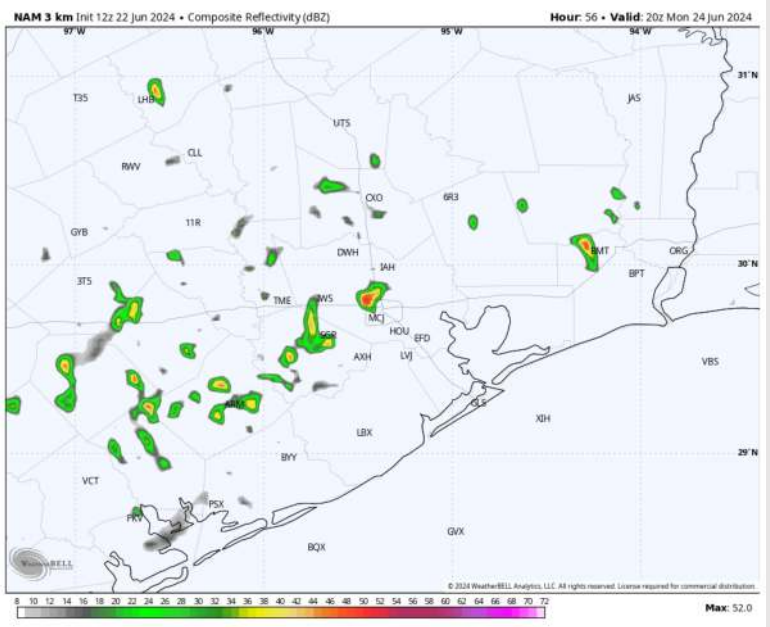
Precip: Spotty showers chances will be possible 2PM – 8PM (30%), with majority of activity expected to remain light and off to the north. Localized downpour risk only.

Wind: Winds will be out of the south for the entire day. **N of Morgan's Point:** Winds at 3 – 8 kts throughout the entire day. **S of Morgan's Point:** Winds at 4 – 9 kts through 4PM before increasing to 7 – 11 kts for the remainder of the day.

High Temps: **N of Morgan's Point:** Low 90s F. **S of Morgan's Point:** Mid to upper 80s F

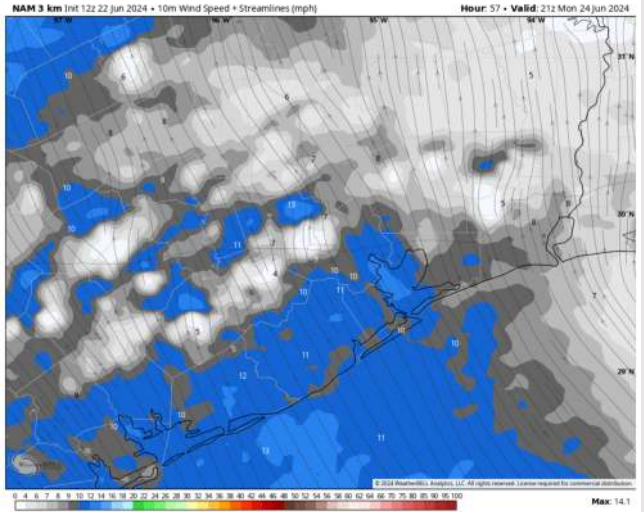
Visibility: Not anticipating any fog concerns for Monday. Visibility could be reduced to a mile with any heavy downpour

Precip Image: 3 PM CT



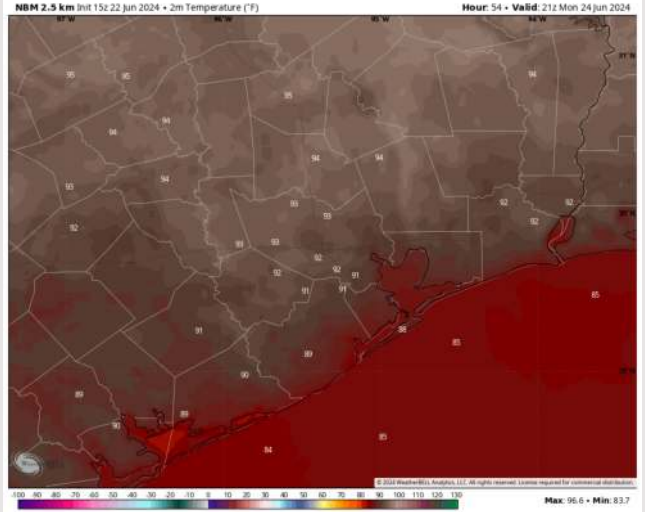
NAM 3 km Init 12z 22 Jun 2024 • 10m Wind Speed • Streamlines (mph) Hour: 57 • Valid: 21z Mon 24 Jun 2024

Wind Speed:
4 PM CT

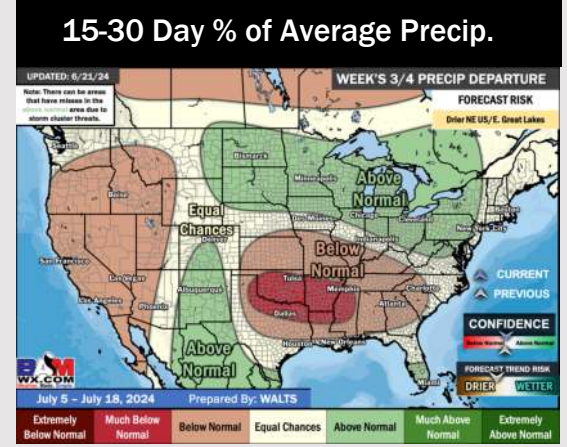
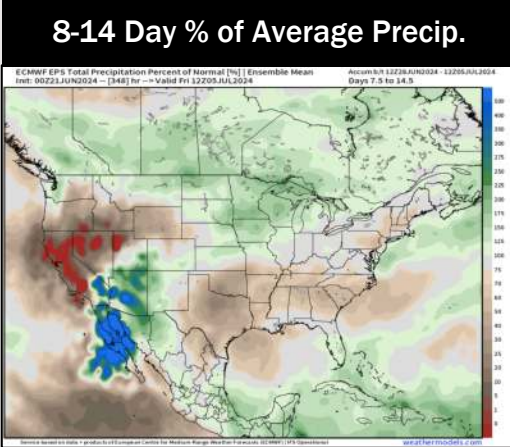
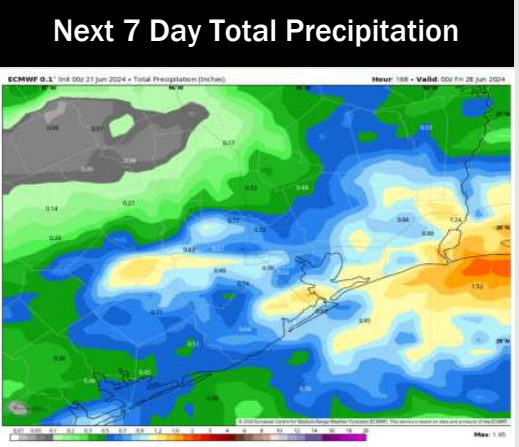
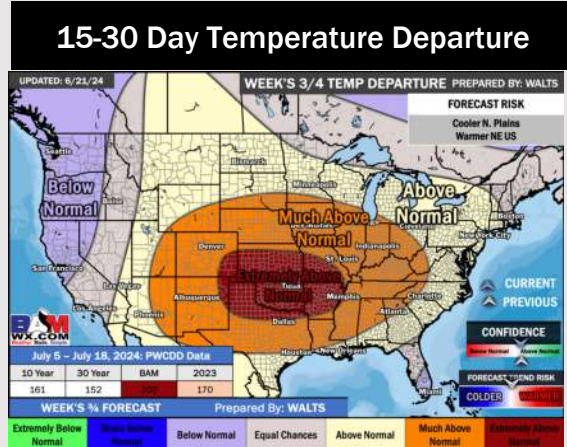
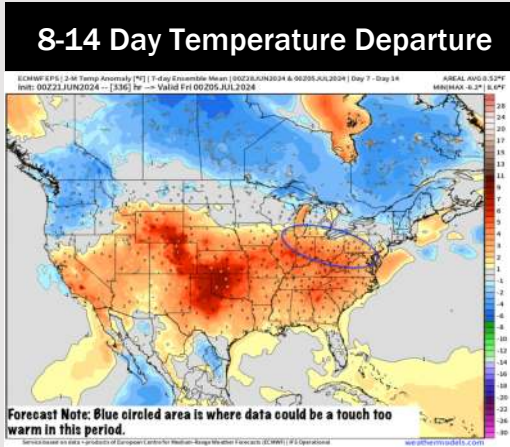
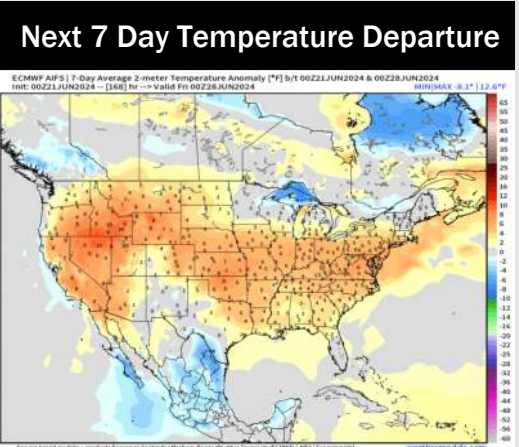


NBM 2.5 km Init 15z 22 Jun 2024 • 2m Temperature (F) Hour: 54 • Valid: 21z Mon 24 Jun 2024

High Temps
Monday



Houston Pilots: 6/22/24



- Temps are expected to be slightly above normal for the week 1 timeframe. The next heaviest shot of rain will move in mid to late next week.
- Below normal precipitation chances are at play during the week 2 timeframe. Temps are expected to be slightly above normal for week 2.
- Near normal chances for precipitation and Above normal temperatures are favored in the weeks 3/4 timeframe.