

Houston Pilots Forecast Package

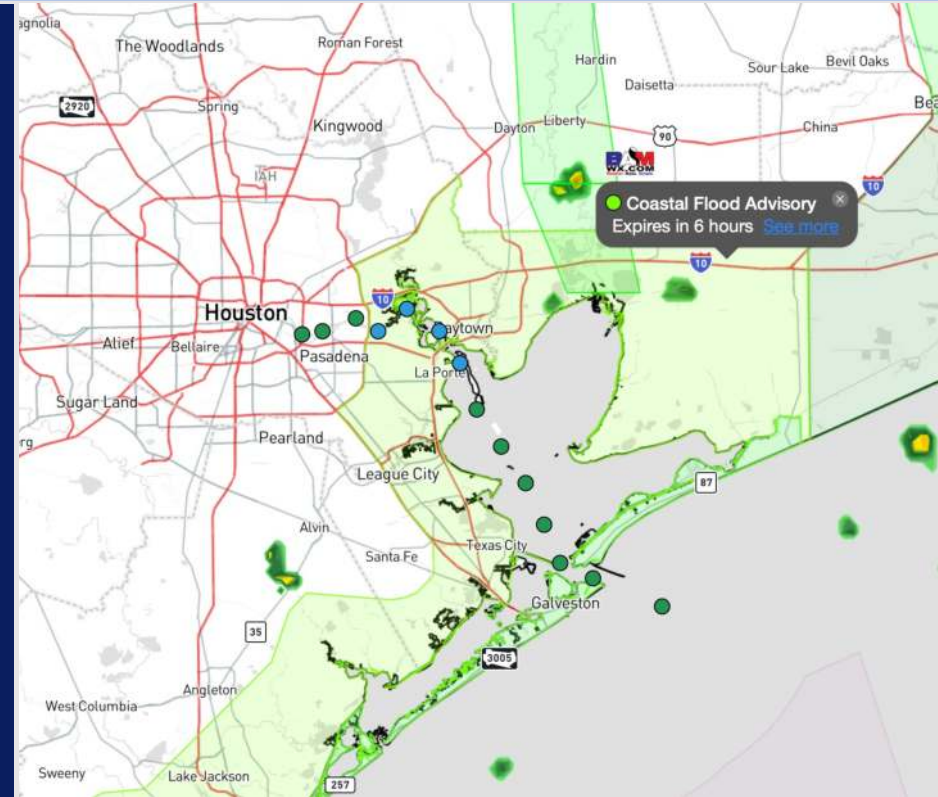


Updated: 12:40 PM CT
Friday, June 21, 2024

Forecaster: Alyssa Elliott

Weather Headlines

- Scattered showers/iso storms expected to continue throughout the evening.
- Wave heights will continue to drop throughout the rest of the day, dropping to 4 ft or less by 7 PM.
- Winds will be calmer the next few days with max sustained winds not expected to exceed 20 kts.



Current Radar: 12:30 PM CT



As always, please do not hesitate to reach out to us with any forecast questions via the chat option on Clarity or our on-call number, **(317)-560-8122** press **1** for forecast questions.

Houston Pilots Tropical Update

European Model Next 10 Days - Tropical Tracks

ECMWF GULF EPS Cyclone Locations --> Next [10-days]
INIT: 00Z21JUN2024 --> UNTIL 00Z01JUL2024

o-o ENSEMBLE MEAN
o-o 1000 - 1010 hPa
o-o 980 - 999 hPa
o-o 960 - 979 hPa
o-o 950 - 959 hPa
o-o < 950 hPa

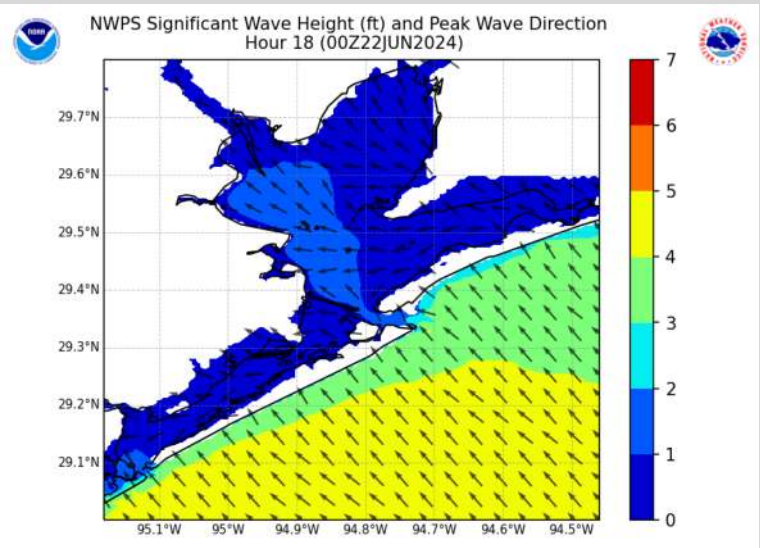


Monitoring the potential for the formation of a Tropical Depression in the far SW portion of the Gulf of Mexico between 6/22 - 6/23

Not favoring a direct impact with the Houston area at this time.

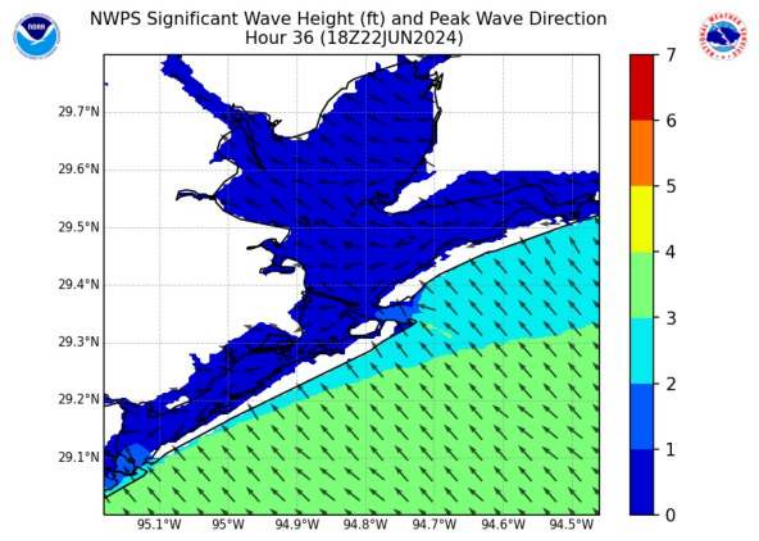
Houston Pilots Wave Height Update

Significant Wave Height Image



7 PM CT FRI

At this time, wave heights at the Boarding Station sit in the 3 - 5 ft range.



1 PM CT SAT

Wave heights will continue to decrease throughout the day. Waves will be 4 ft or less at the Boarding Station by 7 PM CT.

Houston Pilots Visibility Chart (miles)



Forecast Confidence



Time	Fri 12pm	Fri 1pm	Fri 2pm	Fri 3pm	Fri 4pm	Fri 5pm	Fri 6pm	Fri 7pm	Fri 8pm	Fri 9pm	Fri 10pm	Fri 11pm	Sat 12am	Sat 1am	Sat 2am	Sat 3am	Sat 4am	Sat 5am	Sat 6am	Sat 7am	Sat 8am	Sat 9am	Sat 10am	Sat 11am
610 Bridge	10	10	10	10	10	10	10	10	10	10	10	10	10	10	10	10	10	10	10	10	10	10	10	10
Kinder 1	10	10	10	10	10	10	10	10	10	10	10	10	10	10	10	10	10	10	10	10	10	10	10	10
Greens Bayou	10	10	10	10	10	10	10	10	10	10	10	10	10	10	10	10	10	10	10	10	10	10	10	10
Shell Crude	10	10	10	10	10	10	10	10	10	10	10	10	10	10	10	10	10	10	10	10	10	10	10	10
Wynchburg Ferries	10	10	10	10	10	10	10	10	10	10	10	10	10	10	10	10	10	10	10	10	10	10	10	10
Exxon 3	10	10	10	10	10	10	10	10	10	10	10	10	10	10	10	10	10	10	10	10	10	10	10	10
Morgans Point	10	10	10	10	10	10	10	10	10	10	10	10	10	10	10	10	10	10	10	10	10	10	10	10
75/76	10	10	10	10	10	10	10	10	10	10	10	10	10	10	10	10	10	10	10	10	10	10	10	10
63/64	10	10	10	10	10	10	10	10	10	10	10	10	10	10	10	10	10	10	10	10	10	10	10	10
51/52	10	10	10	10	10	10	10	10	10	10	10	10	10	10	10	10	10	10	10	10	10	10	10	10
37/38	10	10	10	10	10	10	10	10	10	10	10	10	10	10	10	10	10	10	10	10	10	10	10	10
25/26	10	10	10	10	10	10	10	10	10	10	10	10	10	10	10	10	10	10	10	10	10	10	10	10
11/12	10	10	10	10	10	10	10	10	10	10	10	10	10	10	10	10	10	10	10	10	10	10	10	10
1 & 2 Bravo	10	10	10	10	10	10	10	10	10	10	10	10	10	10	10	10	10	10	10	10	9	9	10	10

NOTE: This is automated data that may/may not agree with the official BAM thinking that's found on the daily slides or special visibility report slides. This data should be used as a guide only

Houston Pilots Wind Chart



Forecast Confidence



Example

Sustained wind 13 Knots
Gusts 18 Knots
Wind from the N

WS: 13
G:18
N

Time Knots	Fri 12pm	Fri 1pm	Fri 2pm	Fri 3pm	Fri 4pm	Fri 5pm	Fri 6pm	Fri 7pm	Fri 8pm	Fri 9pm	Fri 10pm	Fri 11pm	Sat 12am	Sat 1am	Sat 2am	Sat 3am	Sat 4am	Sat 5am	Sat 6am	Sat 7am	Sat 8am	Sat 9am	Sat 10am	Sat 11am
610 Bridge	9 16 E	9 17 E	9 18 E	9 17 ESE	9 17 ESE	9 17 ESE	9 16 ESE	8 14 SE	7 13 ESE	5 11 SE	5 10 ESE	4 8 ESE	3 7 ESE	3 6 E	3 6 ENE	3 6 NE	3 6 NE	3 6 NE	3 7 NE	3 8 ENE	4 9 ENE	5 11 E	6 12 E	
Kinder 1	8 16 E	9 17 E	9 18 E	9 17 ESE	9 17 ESE	9 17 ESE	8 16 ESE	7 14 SE	7 13 ESE	5 11 SE	5 10 ESE	4 8 ESE	3 7 E	3 6 E	3 6 ENE	3 6 NE	3 6 NE	3 6 NE	3 7 NE	3 8 ENE	4 9 ENE	5 11 E	6 12 E	
Greens Bayou	8 16 ESE	8 16 E	9 17 E	9 16 ESE	9 16 ESE	9 16 ESE	8 15 SE	7 14 SE	6 12 SE	5 11 SE	4 9 ESE	4 8 ESE	3 7 E	3 6 E	3 6 ENE	3 6 NE	3 6 NE	3 6 NE	3 7 NE	3 7 ENE	4 9 ENE	5 10 E	6 12 E	
Shell Crude	8 16 E	9 16 E	9 17 ESE	9 16 ESE	9 16 ESE	9 16 ESE	8 15 SE	7 14 SE	7 13 ESE	5 11 SE	5 10 ESE	4 8 ESE	3 7 E	3 6 E	3 6 ENE	3 6 NE	3 6 NE	3 6 NE	3 7 NE	3 8 ENE	4 9 ENE	5 11 E	6 12 E	
ynchburg Ferries	15 8 E	16 8 E	16 9 ESE	16 9 ESE	16 9 ESE	16 8 SE	15 8 SE	13 7 SE	12 6 SE	11 5 SE	9 4 ESE	8 3 ESE	7 3 ESE	7 3 E	6 3 ENE	6 3 ENE	6 3 NE	6 3 NE	6 3 NE	6 4 ENE	7 5 ENE	8 6 E	10 7 E	12 8 E
Exxon 3	10 16 E	10 17 E	11 17 ESE	11 17 ESE	11 17 ESE	11 16 SE	11 15 SE	10 14 SE	9 13 ESE	9 12 ESE	8 11 ESE	7 10 ESE	7 9 ESE	6 8 E	6 8 ENE	5 8 ENE	5 8 ENE	5 8 ENE	5 8 ENE	5 9 ENE	6 10 ENE	6 12 E	7 13 E	7 14 E
Morgans Point	10 16 E	10 17 E	11 18 ESE	11 17 ESE	11 18 ESE	11 17 SE	11 15 SE	10 14 SE	9 13 ESE	9 12 ESE	8 11 ESE	7 10 ESE	7 9 ESE	6 8 E	6 8 ENE	5 7 ENE	5 7 ENE	5 7 ENE	5 7 ENE	5 8 ENE	6 9 ENE	6 11 ENE	7 12 E	7 13 E
75/76	11 18 E	11 18 E	11 19 ESE	11 19 ESE	11 19 ESE	11 18 ESE	11 16 ESE	11 15 ESE	11 14 ESE	10 13 ESE	10 12 ESE	9 11 ESE	9 10 ESE	8 9 E	7 8 E	7 7 E	7 7 E	7 7 E	7 7 ENE	7 7 ENE	7 8 ENE	8 9 E	8 10 E	8 11 E
63/64	11 18 E	11 19 E	11 19 ESE	12 19 ESE	12 19 ESE	12 18 ESE	11 17 ESE	11 16 ESE	11 15 ESE	10 14 ESE	10 13 ESE	9 12 ESE	9 11 ESE	8 10 E	8 9 E	7 8 E	7 8 E	7 8 E	7 8 E	7 8 E	7 9 ENE	8 10 E	8 11 E	9 12 E
51/52	19 E	19 E	19 E	19 ESE	19 ESE	19 ESE	18 ESE	17 ESE	16 ESE	15 ESE	15 ESE	13 ESE	13 ESE	9 E	9 E	8 E	8 E	7 E	7 E	7 E	8 E	8 E	9 E	9 E
37/38	12 19 E	12 19 E	12 19 E	12 19 E	12 19 E	12 18 ESE	11 17 ESE	11 16 ESE	11 15 ESE	10 14 ESE	10 13 ESE	9 12 ESE	9 11 ESE	8 10 E	8 9 E	7 8 E	7 8 E	7 8 E	7 8 E	7 8 E	8 9 E	8 10 E	9 11 E	9 12 E
25/26	13 19 E	12 19 E	12 19 E	12 19 E	12 19 E	12 18 ESE	11 17 ESE	11 16 ESE	11 15 ESE	10 14 ESE	10 13 ESE	9 12 ESE	9 11 ESE	8 10 E	8 9 E	7 8 E	7 8 E	7 8 E	7 8 E	7 8 E	8 9 E	8 10 E	9 11 E	9 12 E
11/12	12 19 E	12 19 E	12 19 E	12 18 E	12 18 E	11 18 ESE	11 16 ESE	11 15 ESE	11 14 ESE	10 13 ESE	10 12 ESE	9 11 ESE	9 10 ESE	8 9 E	8 8 E	7 7 E	7 7 E	7 7 E	7 7 E	7 7 E	8 9 E	8 10 E	9 11 E	9 12 E
1 & 2 Bravo	13 20 E	13 20 E	13 19 E	13 19 E	13 19 E	13 19 E	12 18 ESE	12 17 ESE	12 17 ESE	11 16 ESE	11 15 ESE	11 14 ESE	11 13 ESE	10 12 E	10 11 E	9 10 E	9 9 E	9 9 E	9 9 E	9 9 E	9 10 E	10 11 E	11 12 E	11 16 E

NOTE: This is automated data that may/may not agree with the official BAM thinking that's found on the daily slides. This data should be used as a guide only.

Houston Pilots: Fri. 6/21/2024

Forecast Discussion

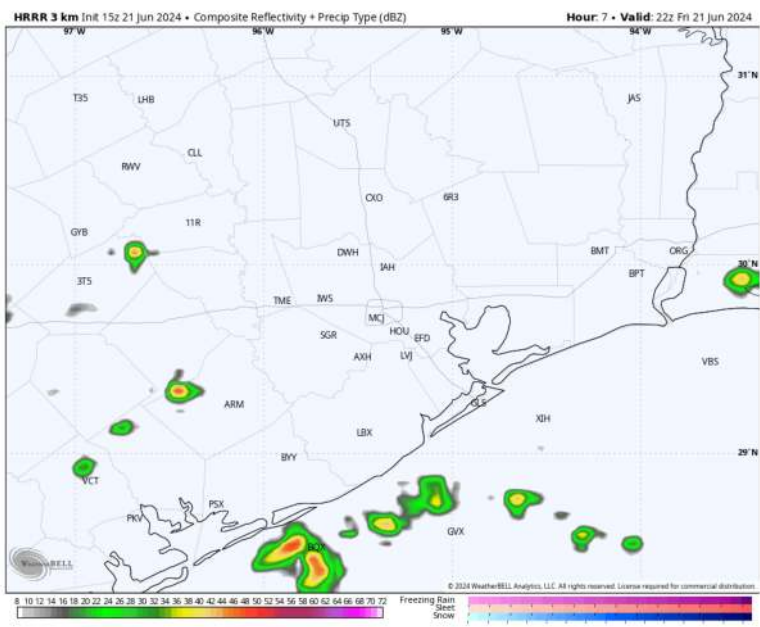
Precip: Scattered showers/thunderstorms (40%) will continue for all stations through 3PM before chances decrease to 10% for the remainder of the evening. **Isolated lightning strikes cannot be ruled out with storms!**

Wind: Easterly winds will shift out of the SE by 4 PM. **N of Morgan's Point:** Winds at 3 – 8 kts throughout the rest of the day. **S of Morgan's Point:** Winds at 13 – 18 kts for the rest of the day. **Gusts up to 20 kts will be possible for the Boarding Station through 8 PM.**

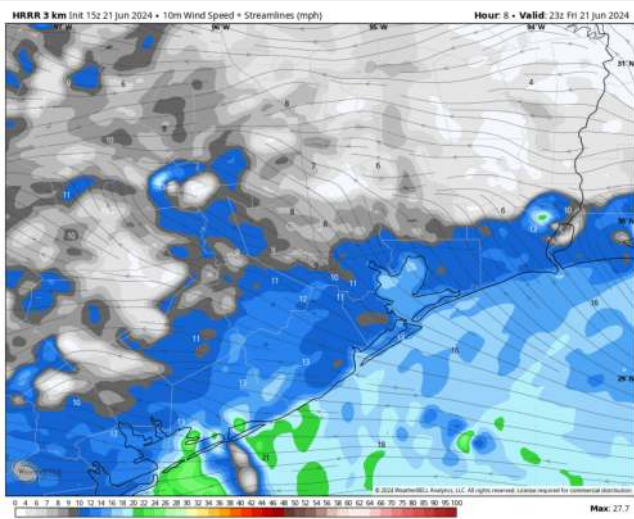
Wave Heights: Wave heights will continue to decrease throughout the day, dropping 4 ft or less at the Boarding Station by 7 PM-CT.

Visibility: Not anticipating any fog concerns for this PM.

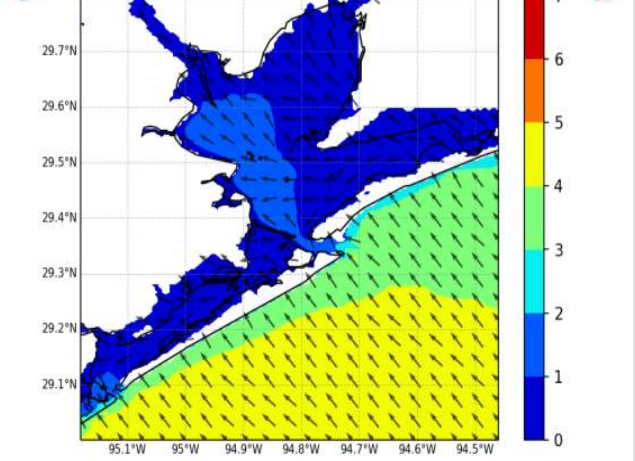
Precip Image: 5 PM CT



Wind Speed: 6 PM CT



NWPS Significant Wave Height (ft) and Peak Wave Direction Hour 18 (00Z22JUN2024)



Max Wave Heights: 7 PM CT

Houston Pilots: Sat. 6/22/2024



Forecast Discussion

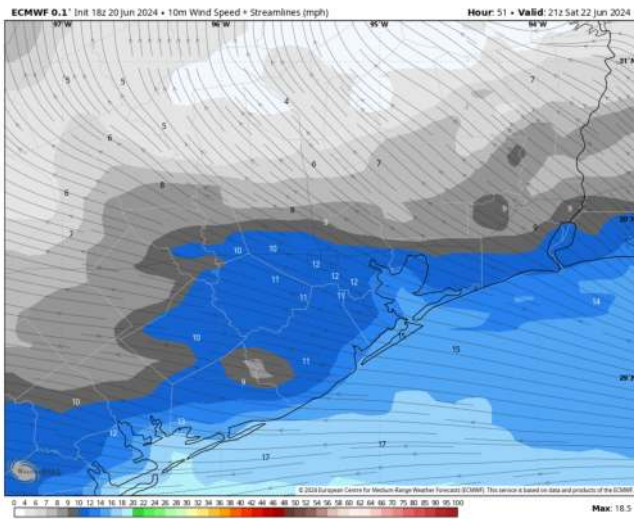
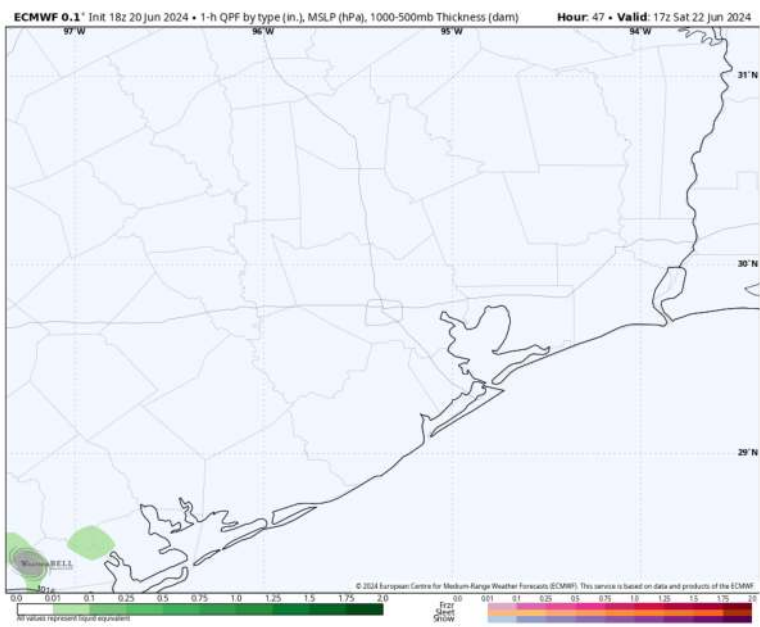
Precip: Favoring dry conditions throughout the day on Saturday.

Wind: Winds will be out of the E/SE throughout the day WED. **N of Morgan's Point:** Favoring winds at 7 – 12 kts throughout the day before slightly decreasing to 4– 9 kts for the rest of the day. **S of Morgan's Point:** Favoring winds at 10-15 kts throughout the day.

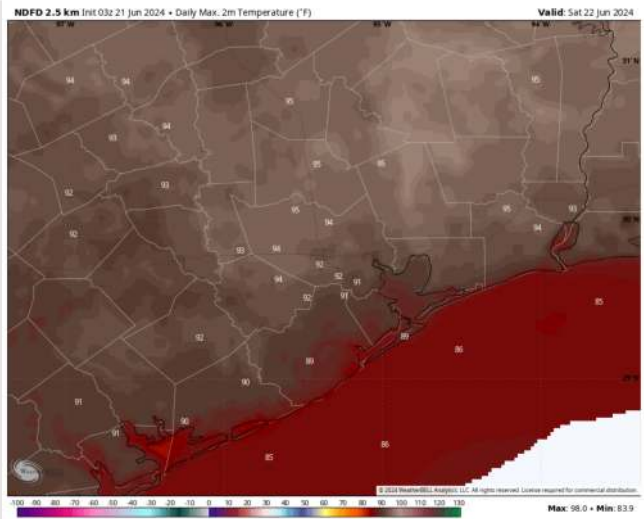
High Temps: **N of Morgan's Point:** Upper 80s F. **S of Morgan's Point:** Mid 80s F.

Visibility: Not favoring any fog concerns for Saturday.

Precip Image: 12 PM CT



Wind Speed
4 PM CT



High Temps
Saturday

Houston Pilots: Sun. 6/23/2024



Forecast Discussion

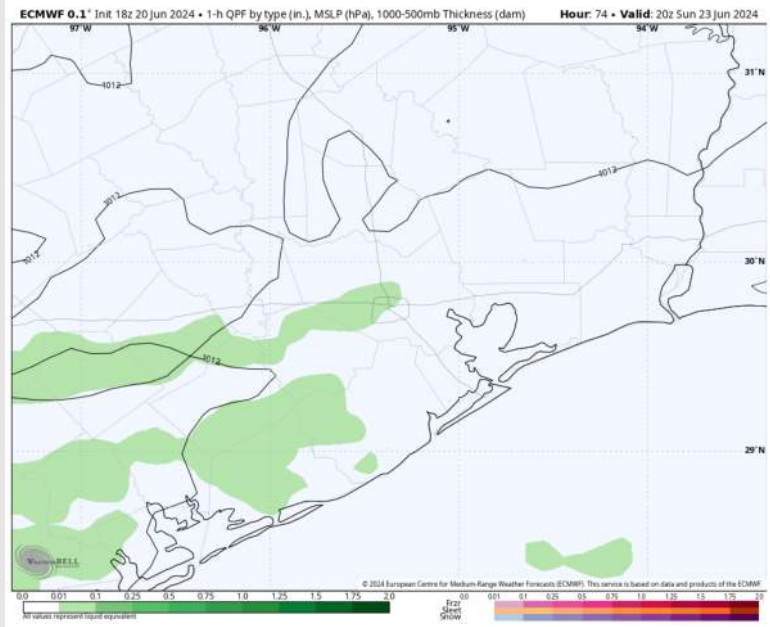
Precip: Favoring mostly dry conditions throughout the day on Sunday, aside from low-end shower/thunderstorm chances between 3 – 7 PM. Majority of activity favored to remain to the W.

Wind: Winds will be out of the E/SE through 10AM before wind become variable through 2PM. After 2 PM winds settle back out of the SE for the rest of the day. **N of Morgan's Point:** Winds will be at 3-8kts throughout the day on Sunday. **S of Morgan's Point:** Winds at 7-12 kts throughout the day on Sunday.

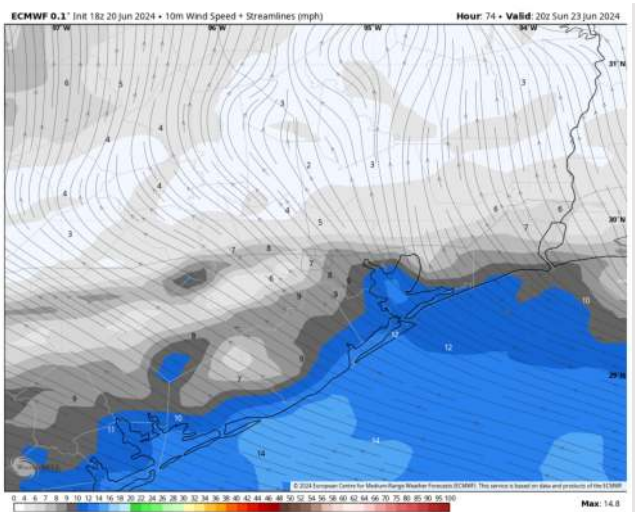
High Temps: **N of Morgan's Point:** Mid 90s F. **S of Morgan's Point:** Mid 80s F

Visibility: Not anticipating any fog concerns for SUN, however reduced visibilities possible under heavier downpours.

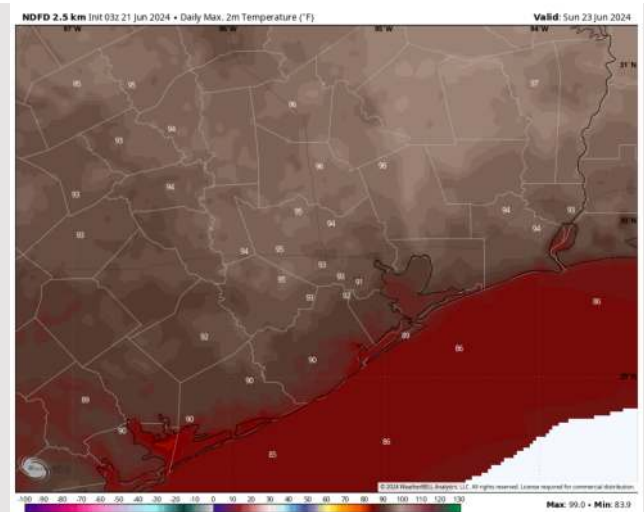
Precip Image: 3 PM CT



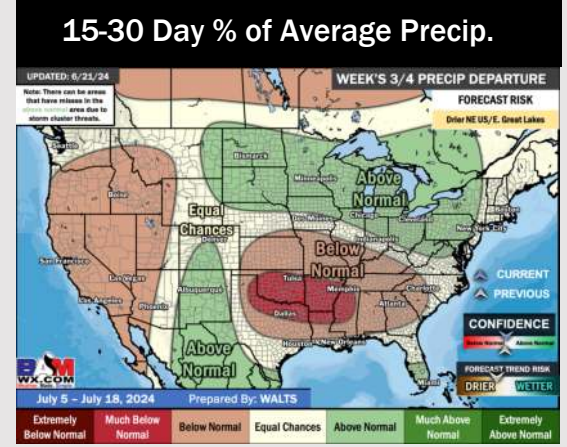
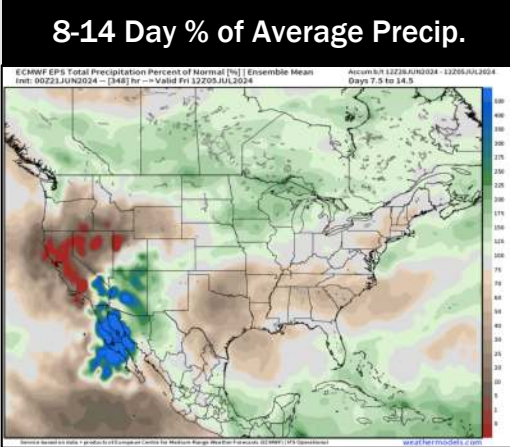
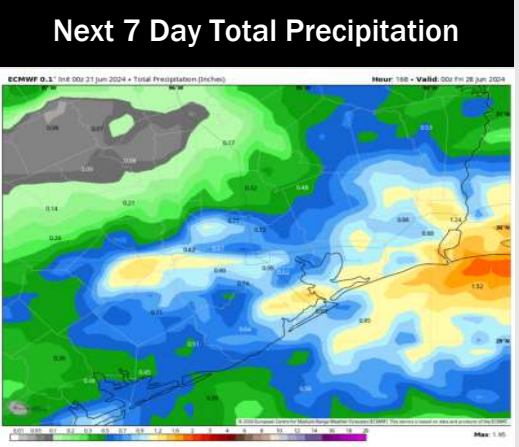
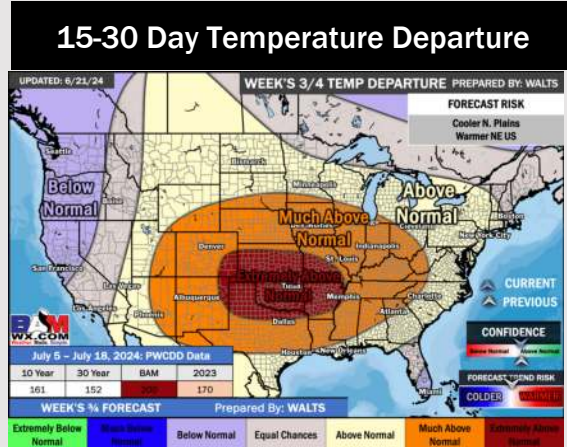
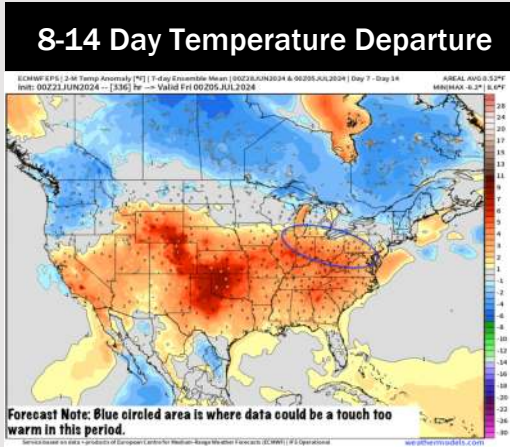
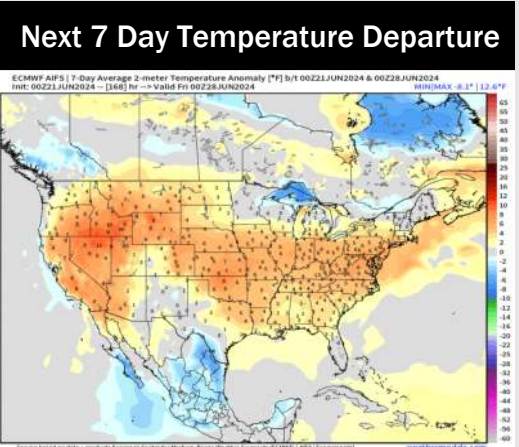
Wind Speed:
3 PM CT



High Temp
Sunday



Houston Pilots: 6/21/24



- Temps are expected to be slightly above normal for the week 1 timeframe. The next heaviest shot of rain will move in mid to late next week.
- Below normal precipitation chances are at play during the week 2 timeframe. Temps are expected to be slightly above normal for week 2.
- Near normal chances for precipitation and Above normal temperatures are favored in the weeks 3/4 timeframe.