

Houston Pilots Forecast Package



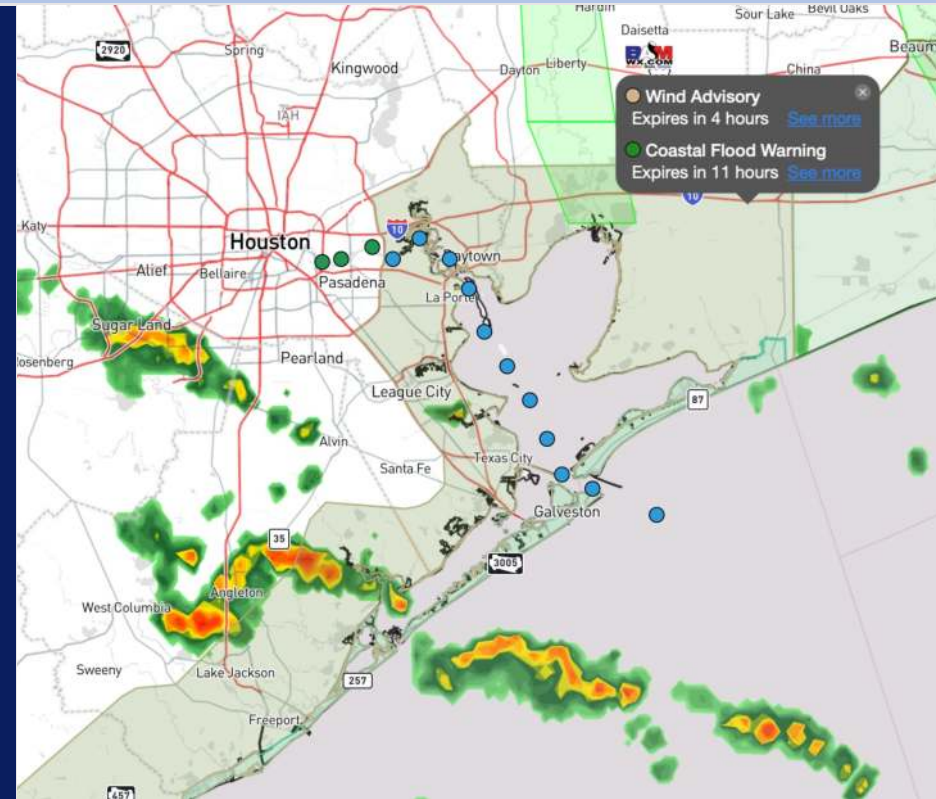
Updated: 8:00 AM CT

Thursday, June 20, 2024

Forecaster: Alyssa Elliott

Weather Headlines

- Stronger wind gusts will continue across for station 51/52 and south now through the early afternoon.
- Zulu port conditions in effect. See slides below for timing and anticipated wave heights.
- Scattered showers/storms expected to continue throughout the day.
- Latest video update discussing wave and wind impacts to stations: [Click Here](#)



Current Radar: 8:00 AM CT



As always, please do not hesitate to reach out to us with any forecast questions via the chat option on Clarity or our on-call number, **(317)-560-8122** press **1** for forecast questions.

Houston Pilots Wave Height Update



Port Condition	34 KTS+ Sustained Winds	6 Foot Waves	Time Remaining/Trigger End
Victor	N/A	N/A	N/A
Whiskey	N/A	N/A	N/A
X-Ray	N/A	N/A	N/A
Yankee	N/A	N/A	N/A
Zulu	NO	IN EFFECT	4 AM CT FRI

Port Condition	Trigger Definition	Trigger Reached?
Victor	Hurricane entering/developing in Gulf of Mexico that's a threat to the area	No
Whiskey	72 hours prior to predicted sustained winds of 34+ KTS	No
X-Ray	48 hours prior to predicted sustained winds of 34+ KTS or 6' wave height	No
Yankee	24 hours prior to predicted sustained winds of 34+ KTS or 6' wave height	No
Zulu	12 hours prior to predicted sustained winds of 34+ KTS or 6' wave height	YES

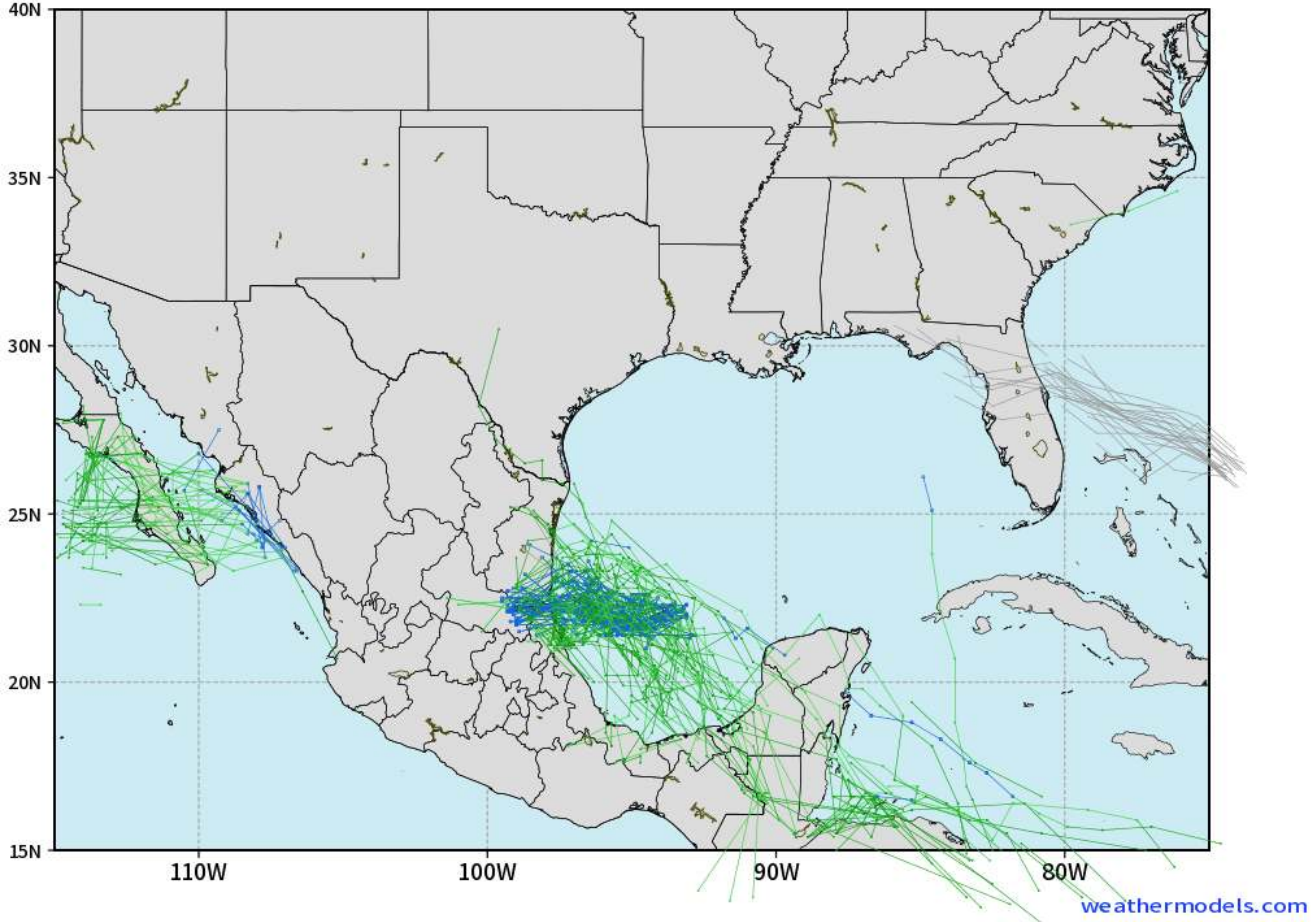
Wave heights ~6 ft towards Station 11/12 and the Boarding Station are anticipated to continue to gradually decrease throughout the day, remaining at 6+ ft until ~7 AM FRI. [More details on progression on wave height slide.](#)

Houston Pilots Tropical Update

European Model Next 10 Days - Tropical Tracks

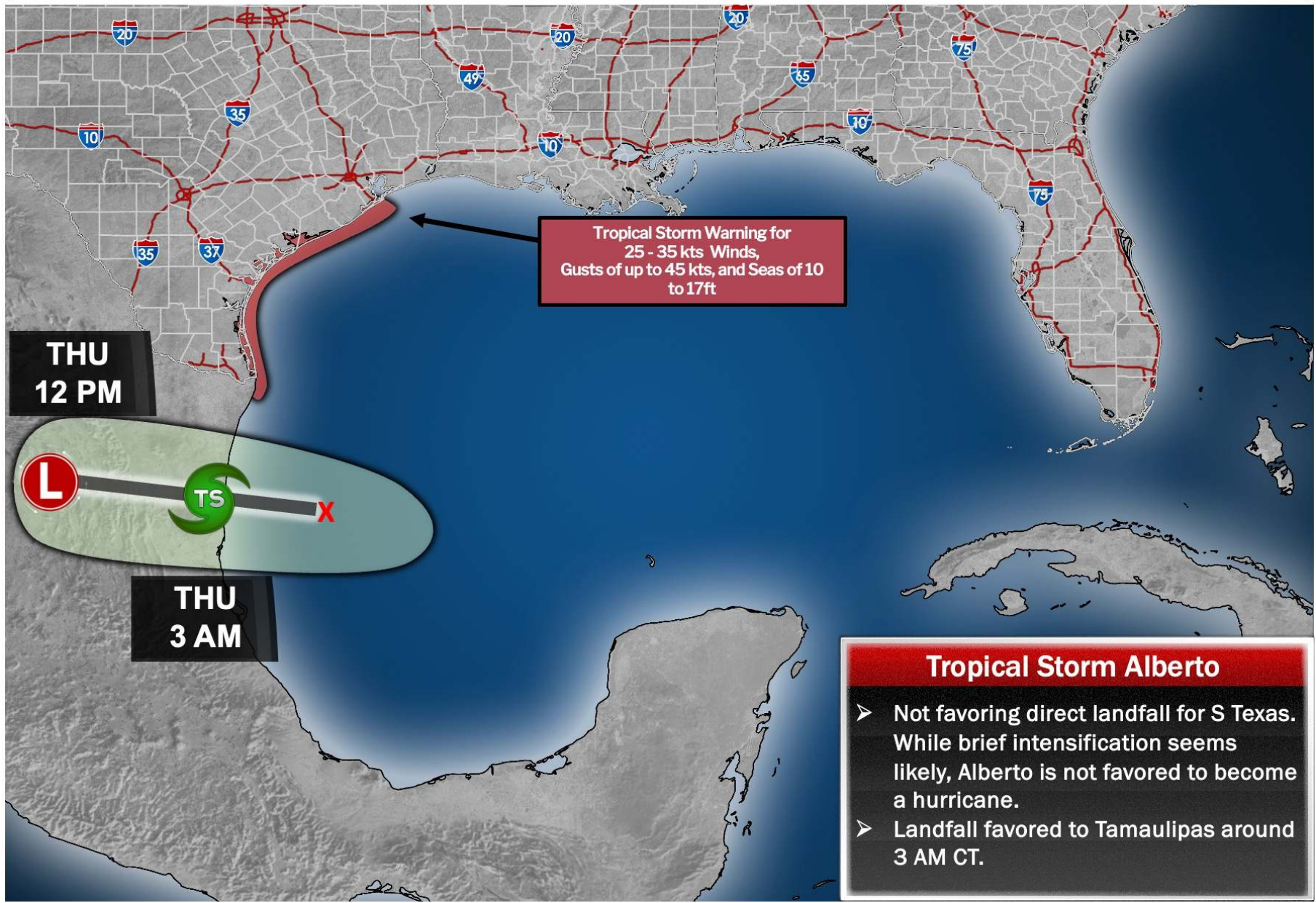
ECMWF GULF EPS Cyclone Locations --> Next [10-days]
INIT: 12Z19JUN2024 --> UNTIL 12Z29JUN2024

o-o ENSEMBLE MEAN
o-o 1000 - 1010 hPa
o-o 980 - 999 hPa
o-o 960 - 979 hPa
o-o 950 - 959 hPa
o-o < 950 hPa



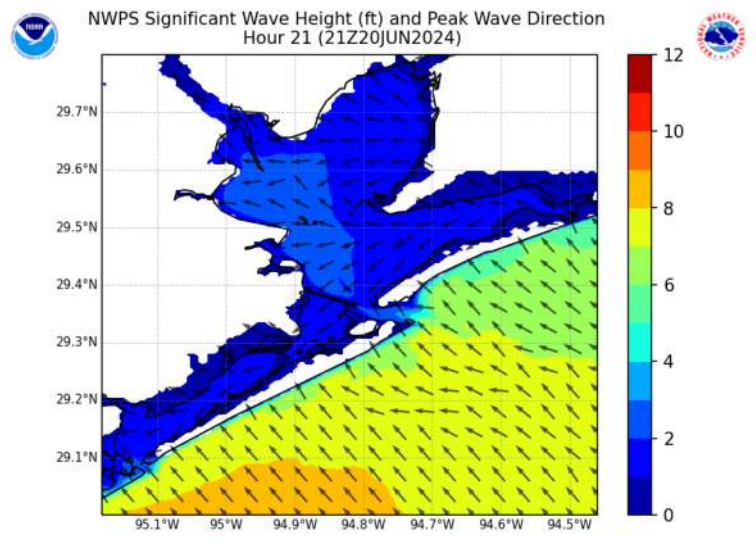
Monitoring a Potential Tropical Cyclone with the potential to become a Tropical Storm in the SW Gulf of Mexico through the 21st - 23rd.

As of THU AM, direct impact with Houston is not favored. Periods of moderate/heavy rain, stronger winds and higher seas will be possible during that timeframe.



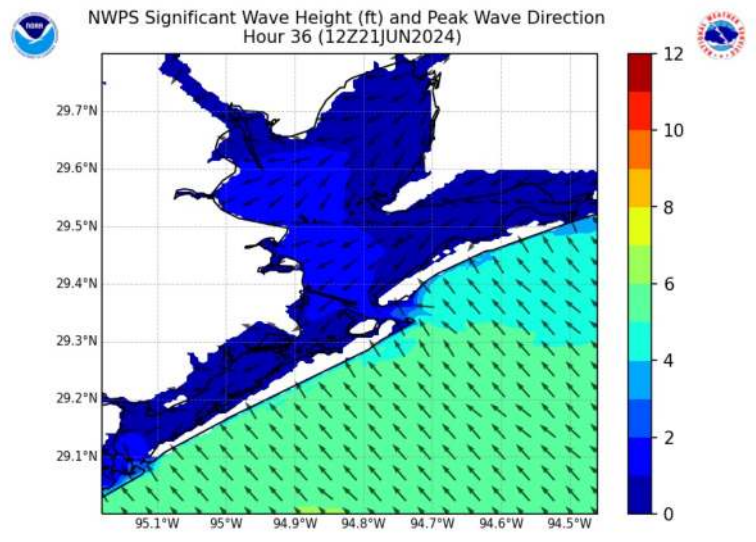
Houston Pilots Wave Height Update

Significant Wave Height Image



4 PM CT THU

Wave heights of 6+ ft will continue throughout the day. Wave heights of 8 ft will be possible at the Boarding Station through 10 AM.



7 AM CT FRI

Wave heights very slowly will recede throughout the day today. Heights are currently anticipated to drop below 6 ft threshold around 7 AM FRI.

Houston Pilots Visibility Chart (miles)



Forecast Confidence



Time	Thu 8am	Thu 9am	Thu 10am	Thu 11am	Thu 12pm	Thu 1pm	Thu 2pm	Thu 3pm	Thu 4pm	Thu 5pm	Thu 6pm	Thu 7pm	Thu 8pm	Thu 9pm	Thu 10pm	Thu 11pm	Fri 12am	Fri 1am	Fri 2am	Fri 3am	Fri 4am	Fri 5am	Fri 6am	Fri 7am
610 Bridge	6	10	10	10	10	10	10	10	10	10	10	10	10	10	10	10	10	10	10	10	10	10	10	10
Kinder 1	6	9	10	10	10	10	10	10	10	10	10	10	10	10	10	10	10	10	10	10	10	10	10	10
Greens Bayou	5	9	10	10	10	10	10	10	10	10	10	10	10	10	10	10	10	10	10	10	10	10	10	9
Shell Crude	5	7	10	10	10	10	10	10	10	10	10	10	10	10	10	10	10	10	10	10	10	10	10	8
Lynchburg Ferries	5	9	10	10	10	10	10	10	10	10	10	10	10	10	10	10	10	10	10	10	10	10	10	9
Exxon 3	5	7	10	10	10	10	10	10	10	10	10	10	10	10	10	10	10	10	10	10	10	10	10	8
Morgans Point	5	7	10	10	10	10	10	10	10	10	10	10	10	10	10	10	10	10	10	10	10	10	10	8
75/76	6	10	10	10	10	10	10	10	10	10	10	10	10	10	10	10	10	10	10	10	7	7	10	9
63/64	6	10	10	10	10	10	10	10	10	10	10	10	10	10	10	10	10	10	10	10	7	7	10	9
51/52	6	10	10	10	10	10	10	10	10	10	10	10	10	10	10	10	10	10	10	10	9	10	10	9
37/38	6	10	10	10	10	10	10	10	10	10	10	10	10	10	10	10	10	10	10	10	9	10	10	10
25/26	6	10	10	10	10	10	10	10	10	10	10	10	10	10	10	10	10	10	10	10	10	10	10	10
11/12	6	10	10	10	10	10	10	10	10	10	10	10	10	10	10	10	10	10	10	10	9	10	10	10
1 & 2 Bravo	6	10	10	10	10	10	10	10	10	10	9	10	9	10	10	10	9	9	7	7	7	7	9	10

NOTE: This is automated data that may/may not agree with the official BAM thinking that's found on the daily slides or special visibility report slides. This data should be used as a guide only

Houston Pilots Wind Chart



Forecast Confidence



Example

Sustained wind 13 Knots
Gusts 18 Knots
Wind from the N

WS: 13
G:18
N

Time Knots	Thu 8am	Thu 9am	Thu 10am	Thu 11am	Thu 12pm	Thu 1pm	Thu 2pm	Thu 3pm	Thu 4pm	Thu 5pm	Thu 6pm	Thu 7pm	Thu 8pm	Thu 9pm	Thu 10pm	Thu 11pm	Fri 12am	Fri 1am	Fri 2am	Fri 3am	Fri 4am	Fri 5am	Fri 6am	Fri 7am
610 Bridge	11	11	11	12	12	12	12	12	12	12	11	10	10	9	8	7	6	5	5	5	5	5	6	6
	22	22	22	23	24	23	24	24	23	23	22	20	20	18	17	15	14	12	12	12	12	12	12	13
	ENE	ENE	E	E	E	E	E	E	ESE	ESE	ESE	E	E	E	E	E	E	ENE	ENE	ENE	ENE	NE	NE	NE
Kinder 1	11	11	11	12	12	12	12	12	12	11	11	10	9	9	8	7	6	5	5	5	5	5	6	6
	22	22	22	23	24	23	24	24	23	23	22	20	20	18	17	15	14	12	12	12	12	12	12	13
	ENE	ENE	E	E	E	E	E	E	ESE	ESE	ESE	E	E	E	E	E	E	ENE	ENE	ENE	ENE	NE	NE	NE
Greens Bayou	11	11	11	11	12	11	11	11	12	11	11	10	9	9	8	7	6	5	5	5	5	5	6	6
	22	21	22	22	23	23	23	23	23	22	21	20	19	17	16	15	13	12	11	11	11	12	12	13
	ENE	ENE	ENE	E	E	E	E	E	ESE	ESE	ESE	ESE	E	E	E	E	E	E	ENE	ENE	ENE	NE	NE	NE
Shell Crude	11	11	11	12	12	12	12	12	12	11	11	10	9	9	8	7	6	5	5	5	5	5	6	6
	22	22	22	22	23	23	23	23	23	22	21	20	19	18	17	15	14	12	12	12	12	12	13	13
	ENE	ENE	ENE	E	E	E	E	E	ESE	ESE	ESE	ESE	E	E	E	E	E	E	E	ENE	ENE	ENE	NE	NE
Lynchburg Ferries	11	11	11	12	12	12	12	12	12	11	11	10	9	8	7	7	6	5	5	5	5	5	6	6
	22	22	22	22	22	23	22	22	23	22	21	19	18	17	16	14	13	11	11	11	11	11	12	13
	ENE	ENE	E	E	E	E	E	ESE	ESE	ESE	ESE	E	E	E	E	E	E	E	ENE	ENE	ENE	ENE	NE	NE
Exxon 3	17	16	15	15	15	15	15	15	15	15	15	14	14	13	13	11	11	9	9	9	9	9	10	10
	23	22	22	22	23	23	23	23	23	23	22	21	21	20	19	17	15	14	14	14	14	14	15	15
	ENE	E	E	E	E	E	E	E	ESE	ESE	E	E	E	E	E	E	E	E	E	E	ENE	ENE	ENE	NE
Morgans Point	17	16	15	15	15	15	15	15	15	15	15	15	15	14	13	12	11	10	10	10	10	10	10	10
	23	23	23	23	24	23	24	24	23	23	22	22	21	21	19	18	16	15	15	15	15	15	15	15
	ENE	ENE	E	E	E	E	E	E	ESE	ESE	ESE	E	E	E	E	E	E	E	E	E	ENE	ENE	ENE	ENE
75/76	19	18	17	17	17	17	17	17	17	17	17	17	16	16	15	14	13	12	12	12	11	11	12	12
	26	25	26	26	25	25	26	25	25	26	25	24	23	22	21	20	19	17	17	16	17	16	16	17
	E	E	E	E	E	E	E	E	ESE	ESE	ESE	E	E	E	E	E	E	E	E	E	E	E	ENE	ENE
63/64	19	19	18	18	18	17	17	17	17	17	17	17	17	17	16	15	14	13	13	12	12	12	12	12
	27	26	27	26	26	26	26	26	26	26	25	25	24	23	22	21	20	18	17	17	17	17	17	17
	E	E	E	E	E	E	E	E	E	ESE	E	E	E	E	E	E	E	E	E	E	E	E	ENE	E
51/52	20	20	19	19	19	18	19	19	18	18	18	17	17	17	17	16	15	13	13	13	13	13	13	13
	27	27	28	27	26	26	27	27	26	27	26	25	24	24	23	22	21	19	19	18	17	18	17	17
	E	E	E	E	E	E	E	E	E	E	E	E	E	E	E	E	E	E	E	E	E	E	ENE	ENE
37/38	20	20	19	19	19	18	19	19	18	18	18	17	17	17	17	15	15	13	13	13	13	13	13	12
	27	27	28	27	27	26	27	28	27	27	26	25	24	24	23	22	21	19	19	18	18	18	17	17
	E	E	E	E	E	E	E	E	E	E	E	E	E	E	E	E	E	E	E	E	E	E	E	ENE
25/26	19	19	19	19	18	17	18	18	18	17	17	17	17	17	16	15	14	13	13	13	13	12	12	12
	27	27	27	27	27	26	28	27	27	27	26	25	24	24	23	22	21	19	19	18	18	18	17	17
	E	E	E	E	E	E	E	E	E	E	E	E	E	E	E	E	ESE	E	E	E	E	E	E	ENE
11/12	18	18	18	18	17	17	18	18	17	17	16	16	16	15	15	14	13	12	12	11	11	11	11	11
	26	26	26	26	26	26	27	26	26	26	25	25	24	23	22	22	20	19	19	18	17	17	17	17
	E	E	E	E	E	E	E	E	E	E	E	E	E	E	E	E	ESE	ESE	ESE	ESE	E	E	E	E
1 & 2 Bravo	21	21	20	20	20	20	19	19	19	19	19	19	19	18	17	17	16	15	15	14	14	14	13	13
	29	28	28	28	28	28	28	28	28	28	27	26	25	25	24	23	22	21	21	20	19	19	19	19
	E	E	E	E	E	E	E	E	E	E	E	E	E	E	E	E	E	ESE	ESE	E	E	E	E	E

NOTE: This is automated data that may/may not agree with the official BAM thinking that's found on the daily slides. This data should be used as a guide only.

Forecast Discussion

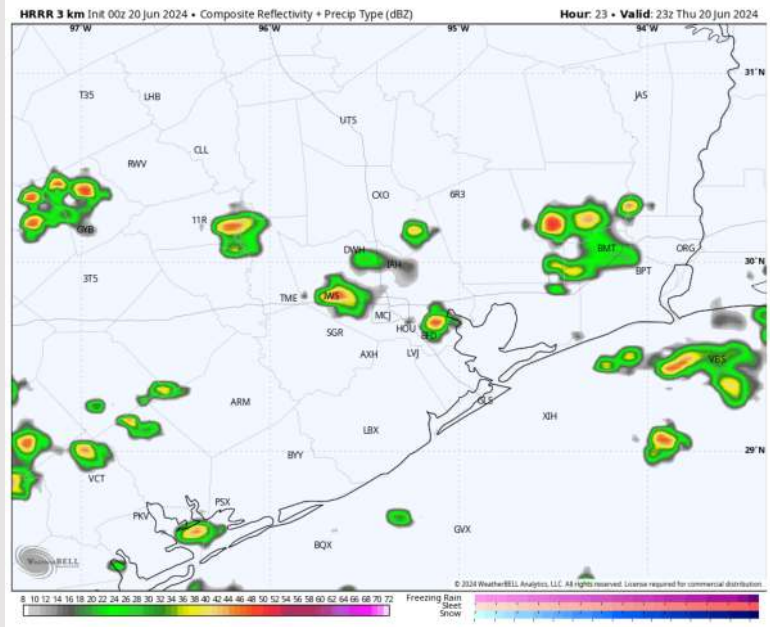
Precip: Lingering scattered rain/storms to continue throughout the day on THU (20%). A few storms have the potential to produce wind gusts of 30+ kts, iso hail and lightning.

Wind: Winds will be out of the E/SE throughout the day THU. N of Morgan's Point: Winds will be at 9-14 kts for the entire day. S of Morgan's Point: Winds at 22-26 kts through the day. Non-thunderstorm wind gusts of 25-30 kts will be possible S of Morgan's Point throughout the day and N of Morgan's Point from 10 AM to 6 PM.

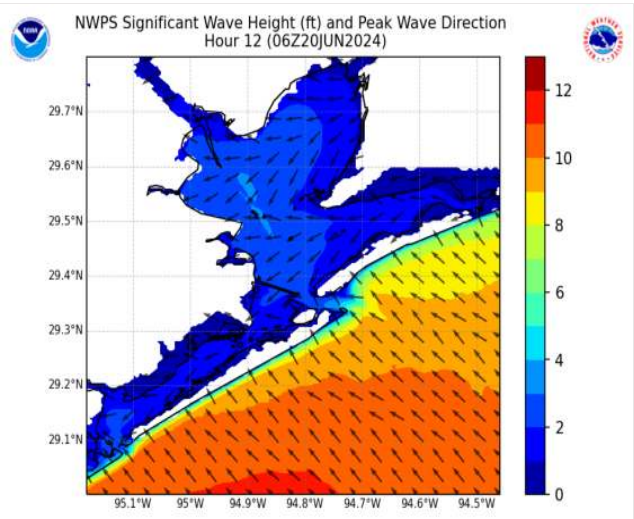
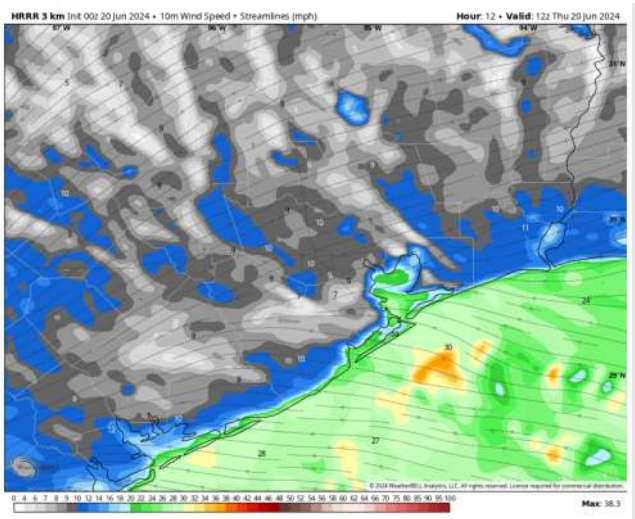
Wave Heights: Wave heights are on the gradual decrease, however will remain above 6 ft throughout the day.

Visibility: Not anticipating any fog concerns for today, however reduced visibilities possible under heavier downpours.

Precip Image: 6 PM CT



Wind Speed:
7 AM CT



Max Wave Heights:
2 AM CT

Forecast Discussion

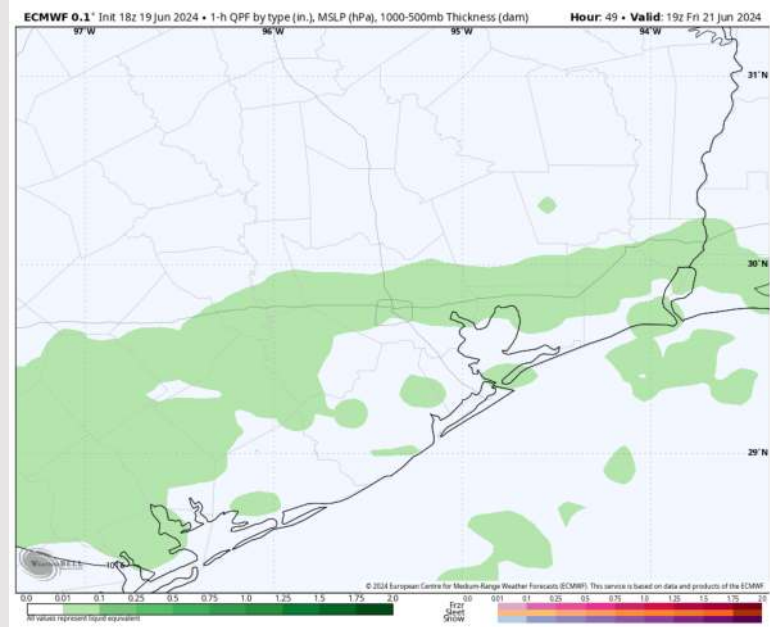
Precip: Scattered showers/thunderstorms (30%) will continue for all stations through 6PM before chances decrease to 10% for the remainder of the evening.

Wind: Winds will be out of the east through the evening hours before shifting out of the ENE by 6 PM. **N of Morgan's Point:** Winds at to 11-16 kts throughout the day. **S of Morgan's Point:** Winds at 13-18 kts through 3PM before slightly decreasing to 10-15 kts for the rest of the day. **Gusts up to 20-25 kts will be possible for all stations.**

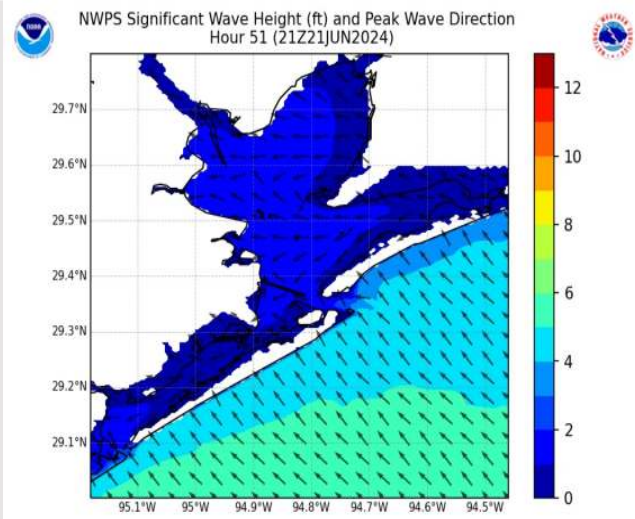
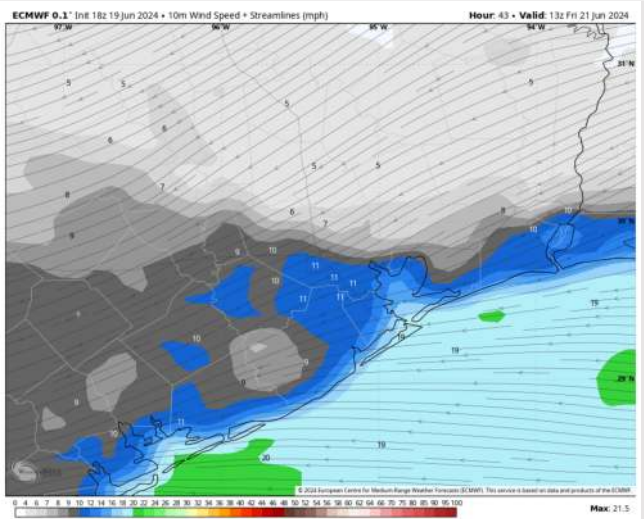
Wave Heights: Wave heights of 6-8 ft will gradually decrease throughout the day, decreasing to below 6ft by 4AM, and 4ft by the end of the day.

Visibility: Not anticipating any fog concerns for today, however reduced visibilities possible under heavier downpours.

Precip Image: 2 PM CT



**Wind Speed:
8 AM CT**



**Max Wave Heights:
1 AM CT**

Houston Pilots: Sat. 6/22/2024



Forecast Discussion

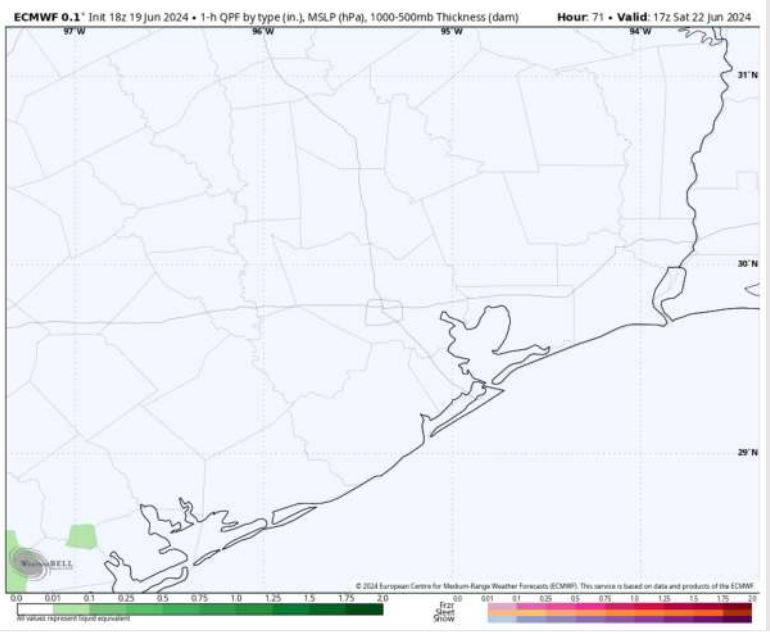
Precip: Favoring dry conditions throughout the day on Saturday.

Wind: Winds will be out of the E/SE throughout the day WED. **N of Morgan's Point:** Favoring winds at 7 – 12 kts throughout the day. **S of Morgan's Point:** Favoring winds at 10-15 kts throughout the day

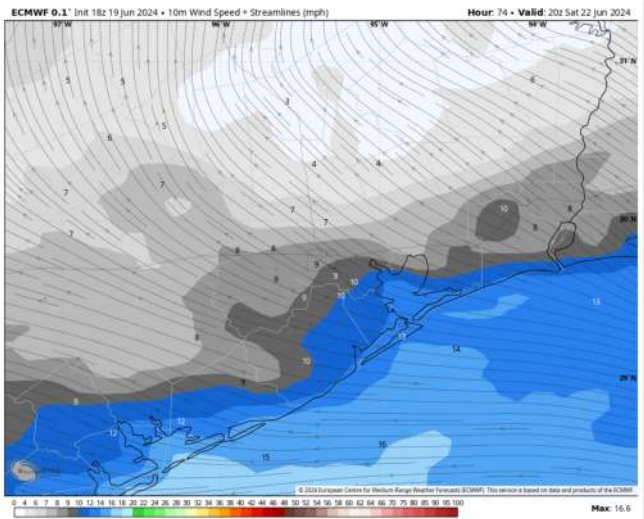
High Temps: **N of Morgan's Point:** Low 90s F. **S of Morgan's Point:** Mid 80s F

Visibility: Not favoring any fog concerns for Saturday

Precip Image: 12 PM CT

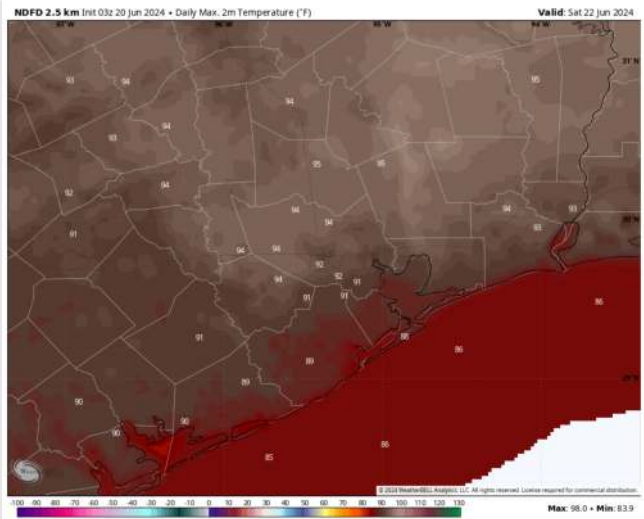


Wind Speed 3 PM CT



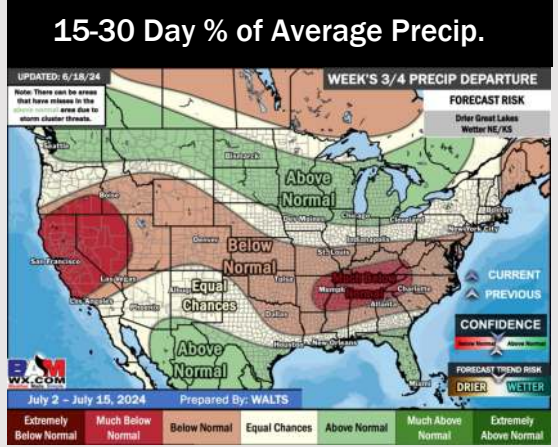
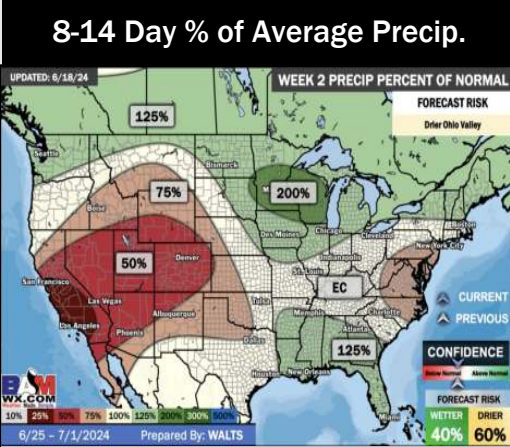
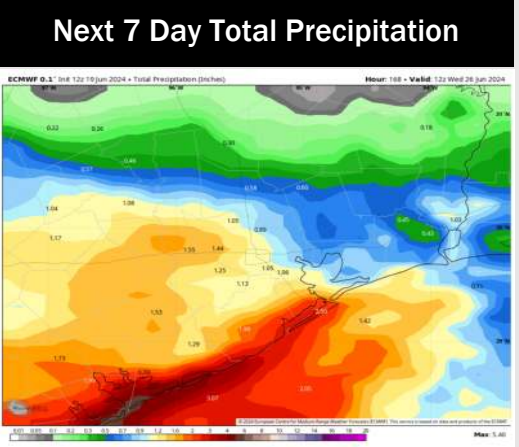
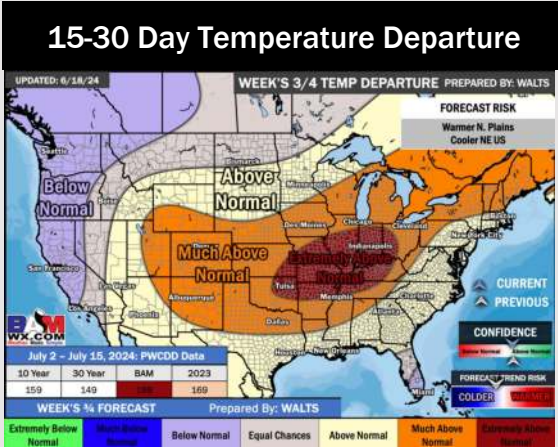
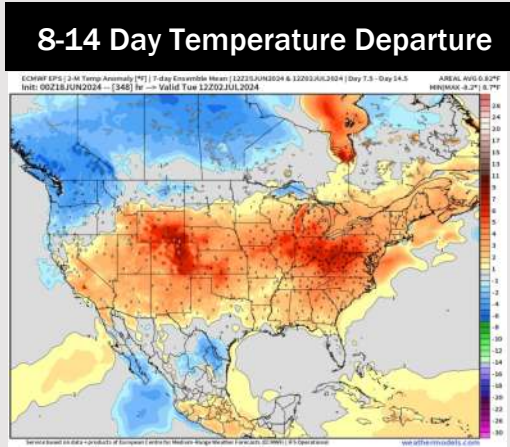
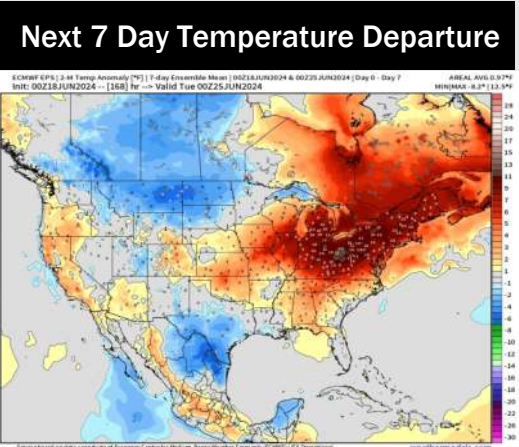
Wind Speed
3 PM CT

High Temps Saturday



High Temps
Saturday

Houston Pilots: 6/20/24



- Temps are expected to be near / slightly below normal for the week 1 timeframe. Monitoring risk for moderate/heavy rain now through THU associated with a tropical system. (Check custom graphic for more information)
- Above normal precipitation chances are at play during the week 2 timeframe. Temps are expected to be near normal for week 2.
- Above normal chances for precipitation and near normal temperatures are favored in the weeks 3/4 timeframe.