

Houston Pilots Forecast Package



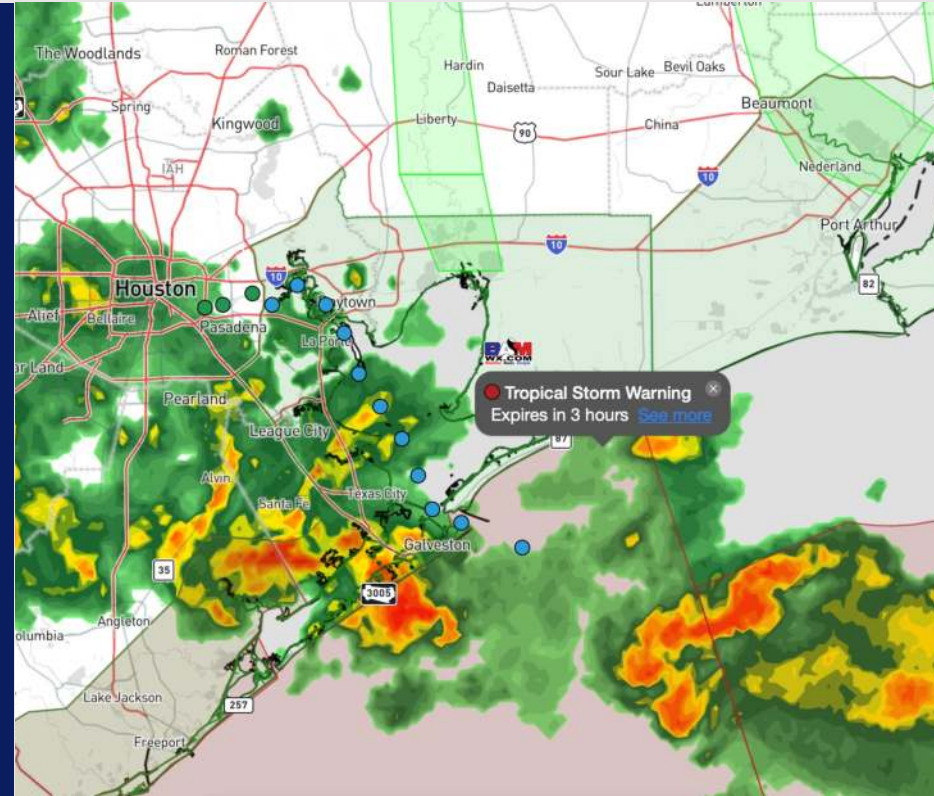
Updated: 2:50 PM CT

Wednesday, June 19, 2024

Forecaster: Hope Kleitsch

Weather Headlines

- Stronger wind gusts will continue across the area now through THU PM.
- Zulu port conditions in effect. See slides below for timing and anticipated wave heights.
- Scattered to widespread showers/storms expected to continue through now into THU.
- Check custom graphic below for current track of the Potential Tropical Cyclone One.



Current Radar: 2:50 PM CT

Click link to the right for video briefing: [Video](#)



As always, please do not hesitate to reach out to us with any forecast questions via the chat option on Clarity or our on-call number, **(317)-560-8122** press **1** for forecast questions.

Houston Pilots Wave Height Update



Port Condition	34 KTS+ Sustained Winds	6 Foot Waves	Time Remaining/Trigger End
Victor	N/A	N/A	N/A
Whiskey	N/A	N/A	N/A
X-Ray	N/A	N/A	N/A
Yankee	N/A	N/A	N/A
Zulu	YES	IN EFFECT	4 AM CT FRI

Port Condition	Trigger Definition	Trigger Reached?
Victor	Hurricane entering/developing in Gulf of Mexico that's a threat to the area	No
Whiskey	72 hours prior to predicted sustained winds of 34+ KTS	No
X-Ray	48 hours prior to predicted sustained winds of 34+ KTS or 6' wave height	No
Yankee	24 hours prior to predicted sustained winds of 34+ KTS or 6' wave height	No
Zulu	12 hours prior to predicted sustained winds of 34+ KTS or 6' wave height	YES

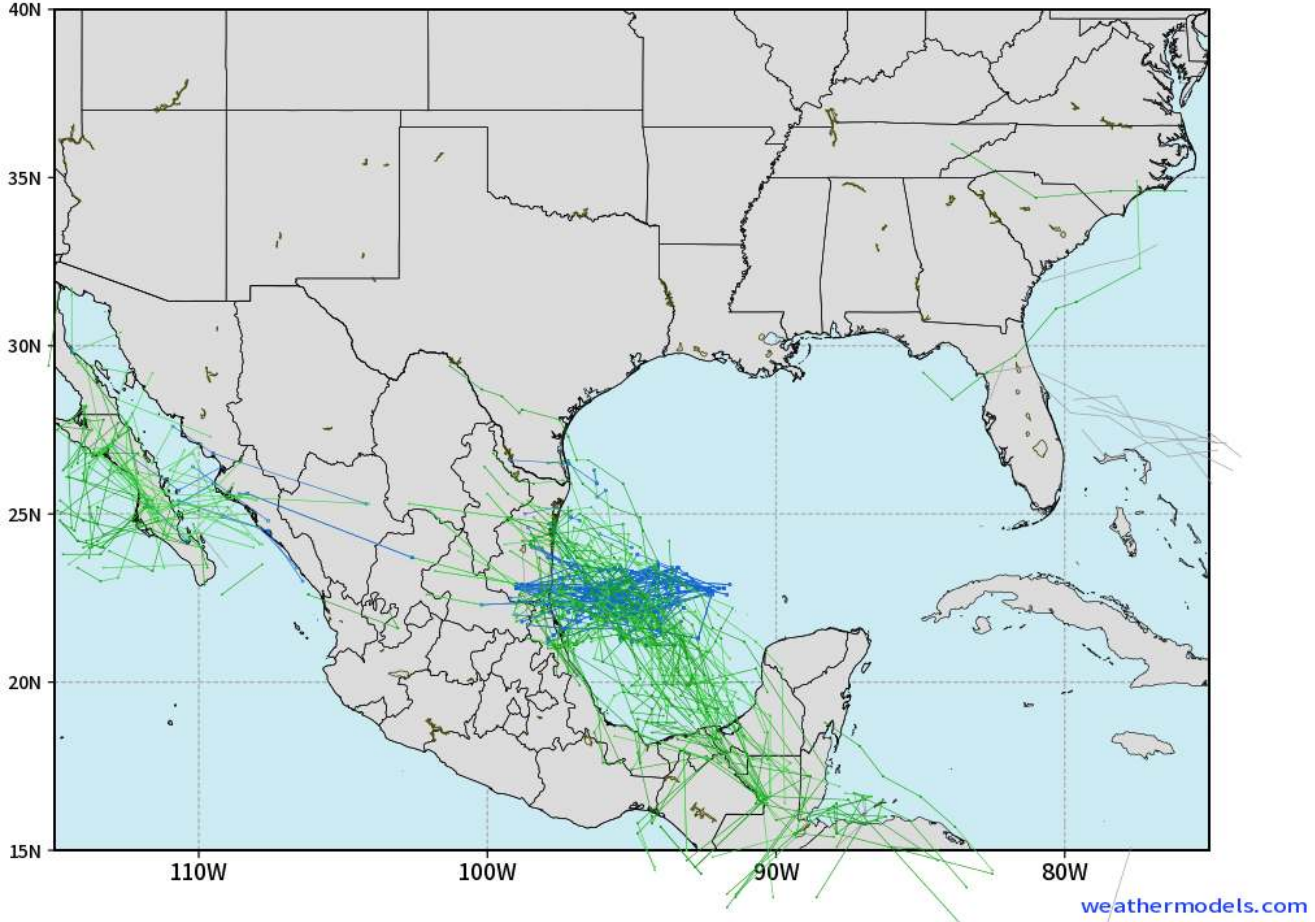
Wave heights ~6 ft towards Station 11/12 and the Boarding Station are anticipated to continue to gradually increase in height throughout the week, remaining at 6+ ft until ~4 AM FRI. **More details on progression on wave height slide.**

Houston Pilots Tropical Update

European Model Next 10 Days - Tropical Tracks

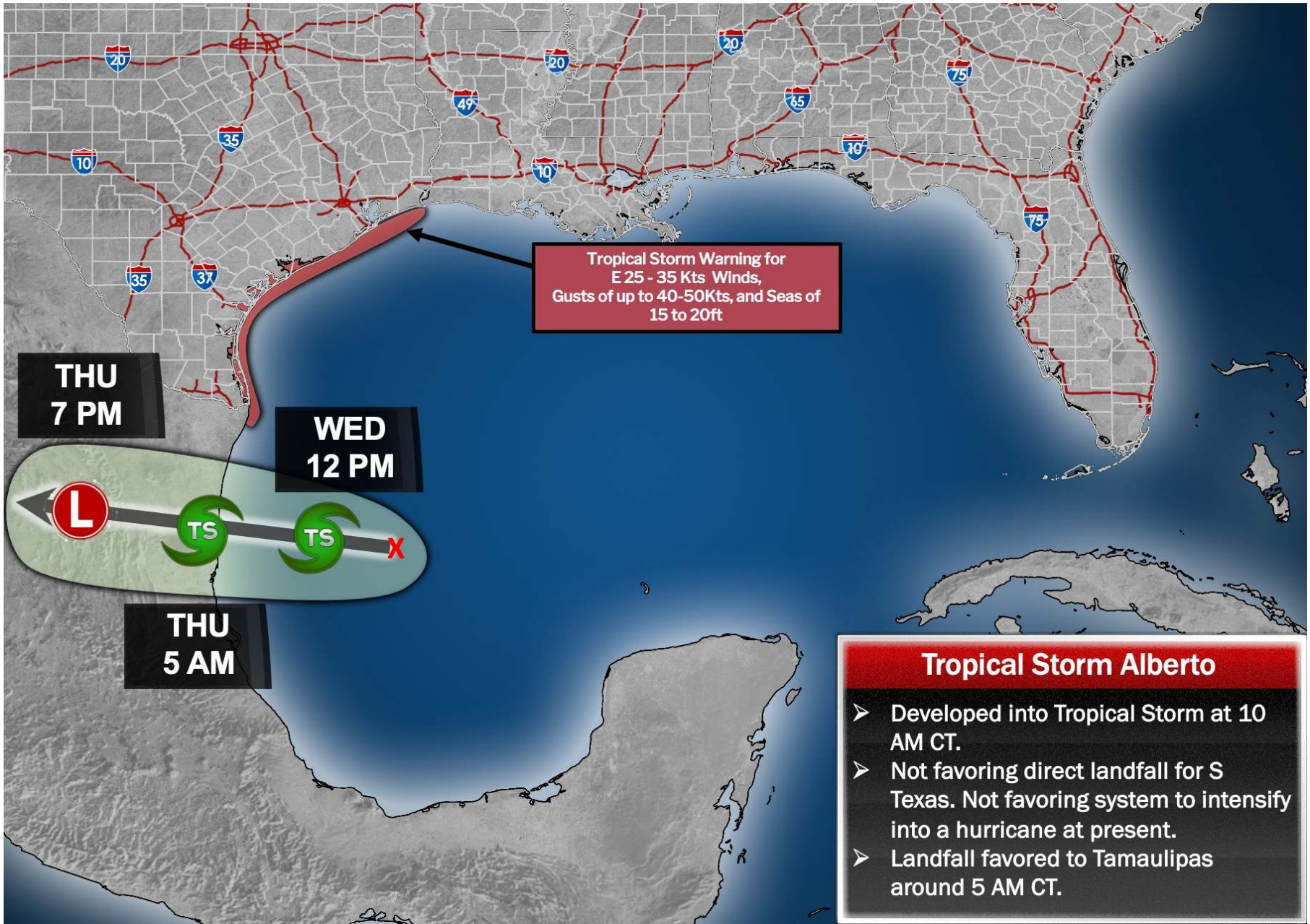
ECMWF GULF EPS Cyclone Locations --> Next [10-days]
INIT: 00Z19JUN2024 --> UNTIL 00Z29JUN2024

o-o ENSEMBLE MEAN
o-o 1000 - 1010 hPa
o-o 980 - 999 hPa
o-o 960 - 979 hPa
o-o 950 - 959 hPa
o-o < 950 hPa



Monitoring a Potential Tropical Cyclone with the potential to become a Tropical Storm in the SW Gulf of Mexico through the 21st.

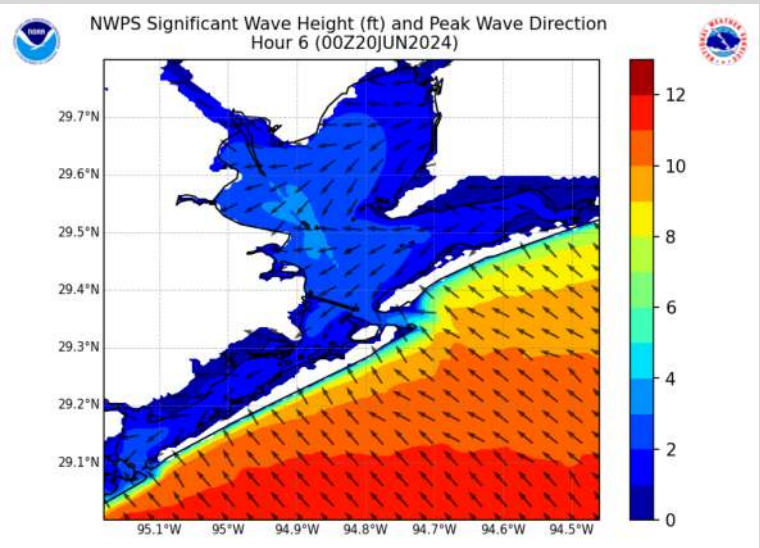
As of WED AM, direct impact with Houston is not favored. Periods of moderate/heavy rain, stronger winds and higher seas will be possible during that timeframe.



Houston Pilots Wave Height Update



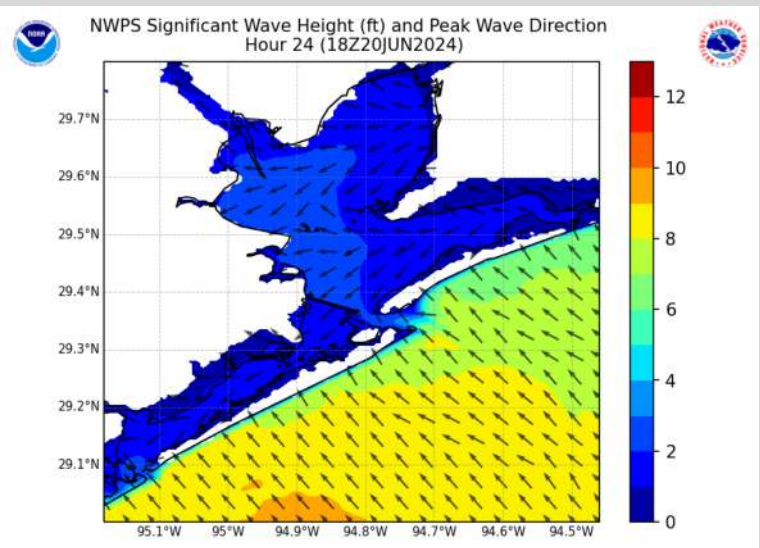
Significant Wave Height Image



7 PM CT WED

Wave heights of 6+ ft will continue to increase throughout the day today.

The highest waves will begin around 4 PM and will continue until 7 AM at ~8 - 10ft at Station 11/12 and the Boarding Station. An occasional 11-12 ft wave around the Boarding Station cannot be ruled out. Waves heights will peak around 7 PM.



1 PM CT THU

Wave heights very slowly recede across THU. Heights are currently anticipated to drop below 6 ft threshold around 4 AM FRI.

Houston Pilots Visibility Chart (miles)



Forecast Confidence



Time	Wed 1pm	Wed 2pm	Wed 3pm	Wed 4pm	Wed 5pm	Wed 6pm	Wed 7pm	Wed 8pm	Wed 9pm	Wed 10pm	Wed 11pm	Thu 12am	Thu 1am	Thu 2am	Thu 3am	Thu 4am	Thu 5am	Thu 6am	Thu 7am	Thu 8am	Thu 9am	Thu 10am	Thu 11am	Thu 12pm
610 Bridge	9	10	10	10	10	10	10	6	10	10	10	10	10	9	7	10	10	10	10	9	10	10	10	10
Kinder 1	9	10	10	10	10	10	10	10	10	10	10	10	10	9	7	10	10	10	10	9	10	10	10	10
Greens Bayou	9	10	10	10	10	10	10	10	10	7	10	10	10	7	6	10	10	10	10	7	10	10	10	10
Shell Crude	9	10	10	10	10	10	10	10	10	7	10	10	10	7	6	10	10	10	10	7	10	10	10	10
Lynchburg Ferries	10	10	10	10	10	10	10	10	10	7	10	10	10	7	6	10	10	10	10	7	10	10	10	10
Exxon 3	9	10	10	10	10	10	10	10	10	10	10	10	7	6	6	10	10	10	10	7	10	10	10	10
Morgans Point	10	10	10	10	10	10	10	10	10	10	10	9	7	6	6	10	10	10	10	7	10	10	10	10
75/76	10	10	10	10	10	10	10	10	10	10	10	10	10	10	9	10	10	10	10	10	10	10	10	10
63/64	10	10	10	10	10	10	10	10	10	10	10	10	10	10	10	10	10	10	10	10	10	10	10	10
51/52	10	10	10	10	10	10	10	10	10	10	10	10	10	10	9	10	10	10	10	10	10	10	10	10
37/38	10	10	10	10	10	10	10	10	10	10	10	10	10	10	9	10	10	10	10	10	10	10	10	10
25/26	10	10	10	10	10	10	10	10	10	10	10	10	10	10	9	10	10	10	10	10	10	10	10	10
11/12	10	10	10	10	10	10	10	10	10	10	10	10	10	9	7	10	10	10	10	10	10	10	10	10
1 & 2 Bravo	10	6	7	6	6	9	10	10	10	10	10	10	9	6	6	9	10	10	10	10	10	10	10	10

NOTE: This is automated data that may/may not agree with the official BAM thinking that's found on the daily slides or special visibility report slides. This data should be used as a guide only

Houston Pilots Wind Chart



Forecast Confidence



Example

Sustained wind 13 Knots
Gusts 18 Knots
Wind from the N

WS: 13
G:18
N

Time Knots	Wed 1pm	Wed 2pm	Wed 3pm	Wed 4pm	Wed 5pm	Wed 6pm	Wed 7pm	Wed 8pm	Wed 9pm	Wed 10pm	Wed 11pm	Thu 12am	Thu 1am	Thu 2am	Thu 3am	Thu 4am	Thu 5am	Thu 6am	Thu 7am	Thu 8am	Thu 9am	Thu 10am	Thu 11am	Thu 12pm
610 Bridge	13 26 ENE	13 26 ENE	13 27 E	13 27 E	13 26 ENE	12 26 ENE	12 24 ENE	12 25 ENE	12 25 ENE	12 25 ENE	13 25 ENE	12 25 ENE	12 24 ENE	11 23 ENE	11 23 ENE	11 22 ENE	11 22 ENE	11 22 ENE	11 21 ENE	11 22 ENE	11 22 ENE	11 22 ENE	12 23 E	12 24 E
Kinder 1	13 26 ENE	13 26 ENE	13 26 E	13 27 E	13 26 ENE	12 26 ENE	11 24 ENE	11 25 ENE	12 25 ENE	12 25 ENE	13 25 ENE	12 25 ENE	11 24 ENE	11 23 ENE	11 23 ENE	11 22 ENE	11 22 ENE	11 21 ENE	11 22 ENE	11 22 ENE	11 22 ENE	11 22 ENE	12 23 E	12 24 E
Greens Bayou	12 25 ENE	13 25 ENE	13 25 E	13 25 E	13 25 ENE	12 25 ENE	11 23 ENE	11 24 ENE	12 24 ENE	12 25 ENE	12 25 ENE	12 25 ENE	11 24 ENE	11 23 ENE	11 23 ENE	11 22 ENE	11 22 ENE	11 22 ENE	11 22 ENE	11 22 ENE	11 22 ENE	11 22 ENE	11 22 ENE	12 23 E
Shell Crude	13 25 ENE	13 25 ENE	13 26 E	13 26 E	13 26 ENE	13 25 ENE	12 24 ENE	12 25 ENE	12 25 ENE	13 26 ENE	13 25 ENE	12 25 ENE	11 24 ENE	11 23 ENE	11 23 ENE	11 23 ENE	11 23 ENE	11 22 ENE	11 21 ENE	11 22 ENE	11 22 ENE	11 22 ENE	12 23 E	12 23 E
Lynchburg Ferries	13 25 ENE	13 25 ENE	13 25 E	13 25 E	13 25 ENE	13 25 ENE	11 23 ENE	11 24 ENE	11 24 ENE	12 25 ENE	12 25 ENE	11 24 ENE	11 23 ENE	11 23 ENE	11 23 ENE	11 22 ENE	11 22 ENE	11 22 ENE	11 21 ENE	11 22 ENE	11 22 ENE	11 22 ENE	12 23 E	12 23 E
Exxon 3	16 26 ENE	16 25 ENE	16 26 ENE	16 26 ENE	17 26 ENE	17 26 ENE	17 25 ENE	17 26 ENE	18 27 ENE	19 27 ENE	19 27 ENE	19 26 ENE	18 25 ENE	18 25 ENE	18 25 ENE	17 24 ENE	17 24 ENE	17 23 ENE	17 23 ENE	17 23 ENE	16 23 ENE	15 22 ENE	15 22 ENE	15 23 ENE
Morgans Point	17 26 ENE	17 26 ENE	17 27 E	17 27 E	17 27 E	17 26 E	17 26 ENE	18 27 ENE	19 28 ENE	19 28 ENE	19 28 ENE	19 27 ENE	19 26 ENE	19 26 ENE	18 25 ENE	18 24 ENE	18 24 ENE	17 23 ENE	17 23 ENE	17 23 ENE	16 23 ENE	15 23 ENE	15 23 ENE	15 24 ENE
75/76	19 28 ENE	19 29 ENE	19 29 E	19 29 E	19 29 E	20 29 E	20 29 ENE	21 30 ENE	21 30 ENE	21 31 ENE	22 31 ENE	22 31 ENE	21 29 ENE	21 29 ENE	21 29 ENE	20 28 ENE	20 28 ENE	19 27 ENE	19 26 ENE	19 25 ENE	18 25 ENE	17 26 ENE	17 25 ENE	17 25 ENE
63/64	19 29 ENE	21 30 E	21 31 E	21 31 E	21 31 E	21 31 E	21 31 ENE	21 31 ENE	22 31 ENE	22 31 ENE	23 32 ENE	22 31 ENE	21 30 ENE	22 30 ENE	21 29 ENE	21 29 ENE	21 29 ENE	20 28 ENE	20 28 ENE	19 26 ENE	19 27 ENE	18 27 ENE	18 26 ENE	18 26 ENE
51/52	21 30 ENE	22 31 E	22 32 E	22 32 E	22 32 E	23 32 E	22 32 ENE	23 33 ENE	24 34 ENE	24 33 ENE	24 33 ENE	24 33 ENE	23 31 ENE	23 31 ENE	23 31 ENE	22 30 ENE	22 30 ENE	22 29 ENE	21 27 ENE	20 28 ENE	20 28 ENE	19 28 ENE	19 27 ENE	19 26 ENE
37/38	21 31 ENE	23 33 E	23 33 E	22 33 E	23 34 E	23 33 E	23 32 E	23 34 E	24 34 E	24 34 E	24 34 E	23 33 E	23 32 E	23 32 E	22 31 E	22 30 E	22 29 E	22 29 E	21 27 E	20 28 E	20 28 E	19 28 E	19 28 E	19 27 E
25/26	21 31 ENE	22 34 E	23 34 E	23 34 E	22 34 E	22 33 E	22 33 E	23 34 E	23 35 E	23 34 E	23 34 E	23 33 E	22 31 E	22 31 E	22 31 E	21 30 E	21 30 E	21 29 E	19 27 E	19 28 E	19 28 E	19 28 E	19 28 E	19 27 E
11/12	20 31 ENE	22 33 E	23 33 E	22 33 E	21 34 E	21 34 E	21 33 E	22 34 E	22 34 E	21 33 E	21 33 E	21 32 E	20 30 E	20 31 E	19 30 E	19 29 E	19 29 E	19 28 E	18 27 E	18 27 E	19 27 E	18 27 E	18 27 E	17 26 E
1 & 2 Bravo	25 36 E	25 37 E	25 37 E	25 36 E	25 37 E	25 36 E	25 36 E	26 37 E	26 36 E	25 35 E	25 35 E	25 34 E	24 33 E	24 33 E	23 32 E	23 32 E	23 32 E	22 31 E	21 29 E	21 30 E	21 29 E	21 28 E	21 28 E	20 29 E

NOTE: This is automated data that may/may not agree with the official BAM thinking that's found on the daily slides. This data should be used as a guide only.

Forecast Discussion

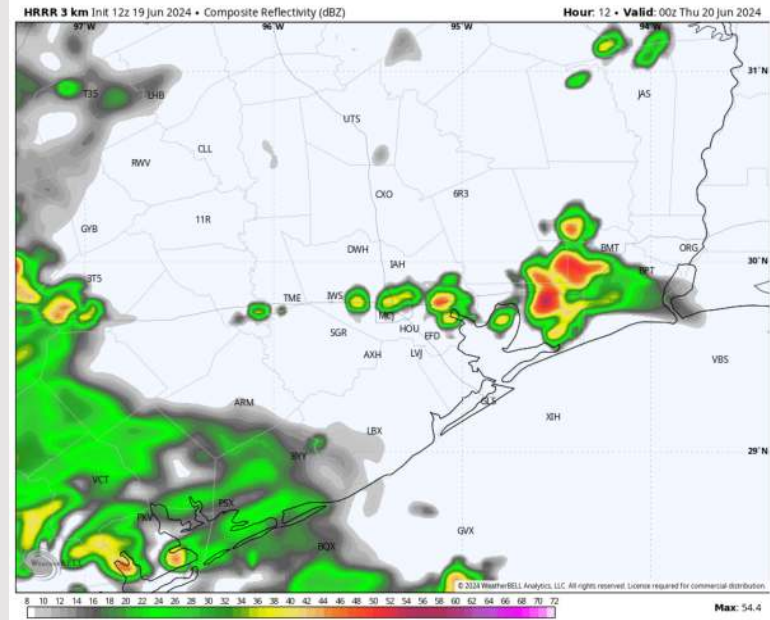
Precip: Showers and thunderstorms will become more isolated in nature throughout the remainder of the evening, where they will persist throughout the rest of the night. **Main risks with thunderstorms will be lightning, isolated hail and strong wind gusts, although there is a very low-end risk for a tornado/waterspout.**

Wind: Winds will be out of the E/ESE throughout the day WED. **N of Morgan's Point:** Favoring winds at 8-13 kts throughout Wednesday. **Thunderstorm-related wind gusts of 28-33 kts will be possible throughout the day.** **S of Morgan's Point:** Favoring winds at 28-33 kts throughout the entire day. **Thunderstorm-related wind gusts of 38-43 kts in play throughout the day**

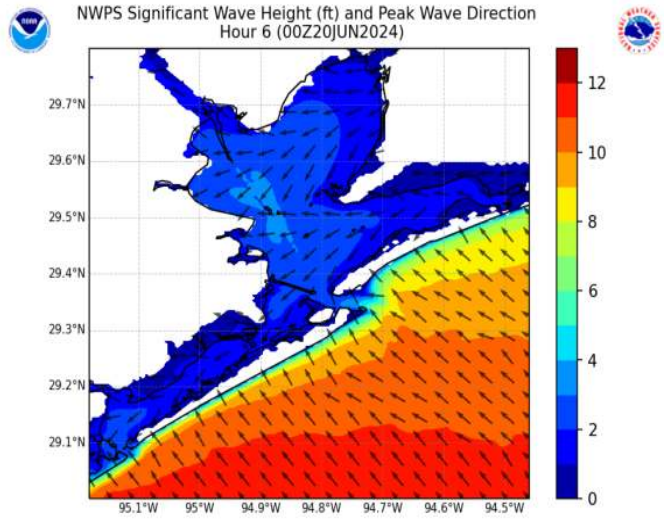
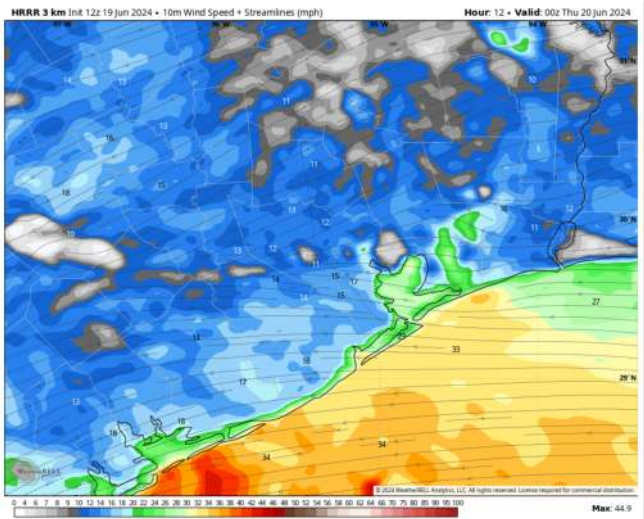
Wave Heights: Wave heights will continue to increase throughout the evening for Stations 11/12 and the Boarding Station (an occasional 11-12 wave cannot be ruled out). Heights will remain at 8+ ft throughout the evening and overnight.

Visibility: Not favoring any fog concerns for Wednesday, however reduced visibilities possible under heavier downpours.

Precip Image: 7 PM CT



Wind Speed
7 PM CT



Max Wave
Heights:
7 PM CT

Forecast Discussion

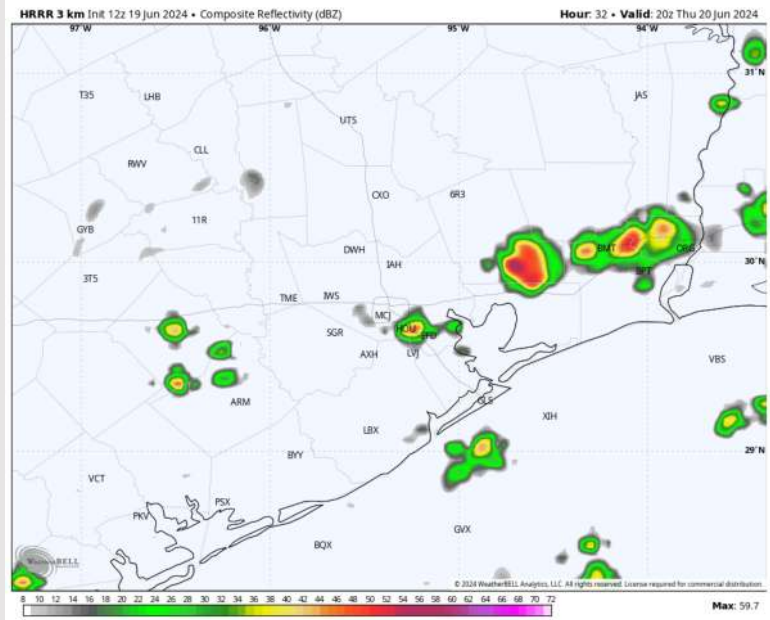
Precip: Lingering scattered rain/storms to continue throughout the day on THU (20%). **A few storms have the potential to produce wind gusts of 35-40 kts.**

Wind: Winds will be out of the E/SE throughout the day THU. **N of Morgan's Point:** Winds will be at 9-15 kts for the entire day. **S of Morgan's Point:** Winds at 18-26 kts through the day on THU. **Non-thunderstorm wind gusts of 28-33 kts will be possible S of Morgan's Point throughout the day and N of Morgan's Point from 10 AM to 3 PM.**

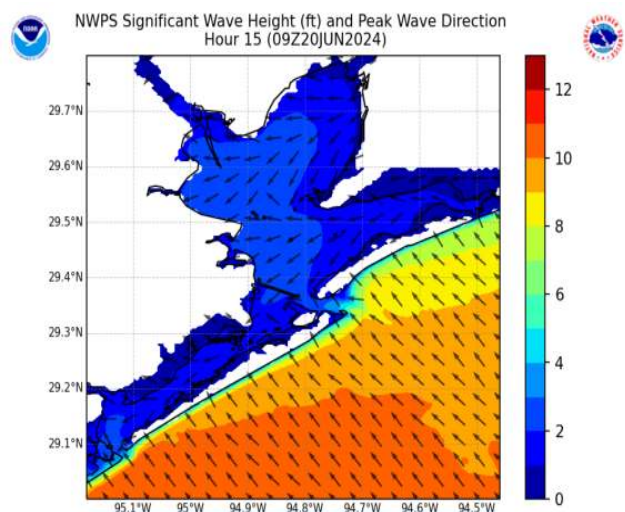
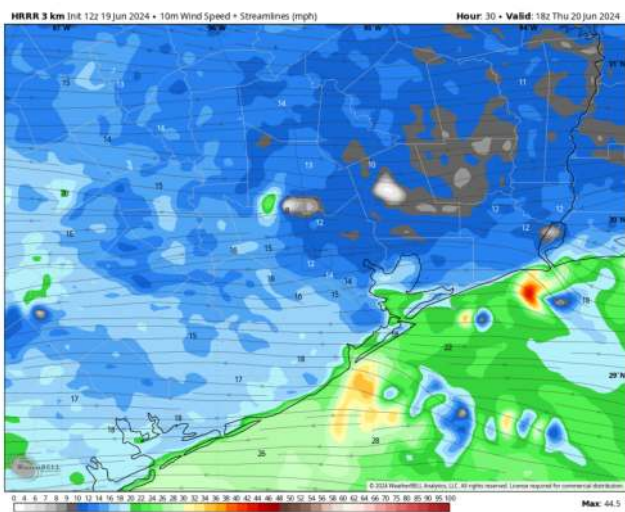
Wave Heights: Wave heights of 8-10 ft will continue for Stations 11/12 and the Boarding Station through ~4 AM CT THU. After 4 AM, wave heights will gradually decrease, however remain above 6 ft throughout all of THU.

Visibility: Not anticipating any fog concerns for Thursday, however reduced visibilities possible under heavier downpours.

Precip Image: 3 PM CT



**Wind Speed:
1 PM CT**



**Max Wave Heights:
4 AM CT**

Houston Pilots: Fri. 6/21/2024



Forecast Discussion

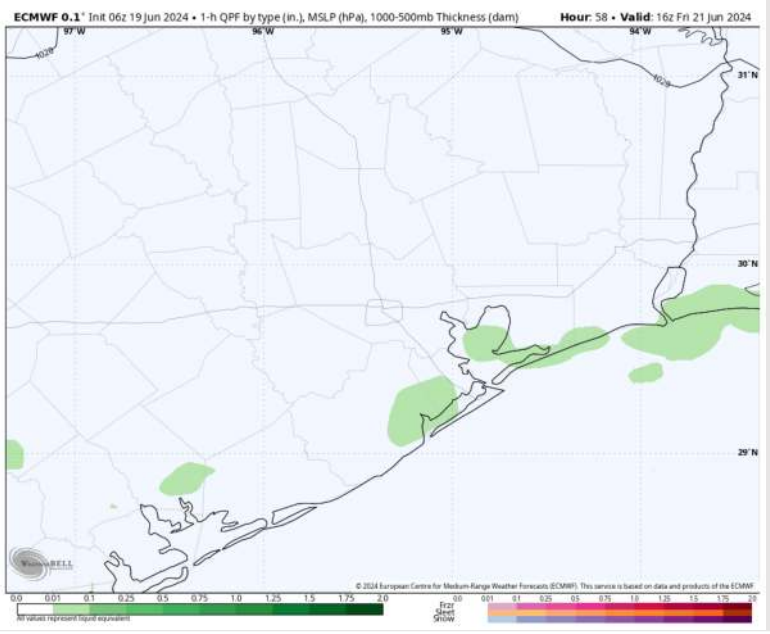
Precip: Scattered showers and thunderstorms (30%) will continue across the area through 6 PM before becoming very isolated (10%) the rest of the evening.

Wind: Winds will be out of the E through the day before shifting clockwise to the SE by 7 PM. **N of Morgan's Point:** Winds at to 5-10 kts before increasing to 8-13 kts. **S of Morgan's Point:** Winds at 17-21 kts throughout the day on FRI.

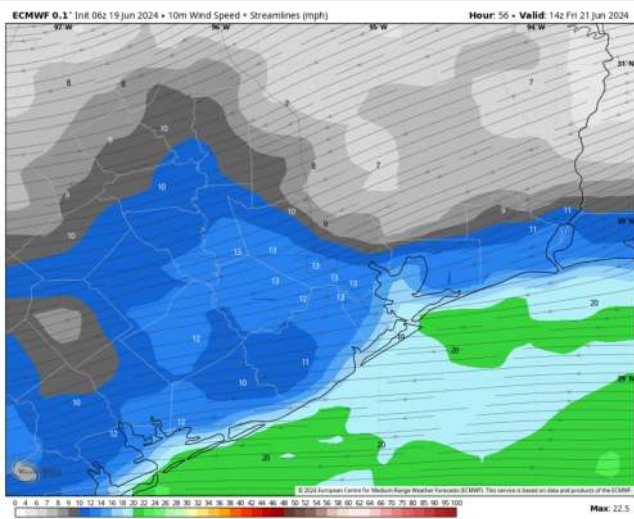
Wave Heights: Wave heights of 6-7 ft will be prominent through 4 AM FRI. After 4 AM, wave heights will reach under 6 ft and remain there as they decrease the rest of FRI.

Visibility: Not anticipating any fog concerns for today, however reduced visibilities possible under heavier downpours.

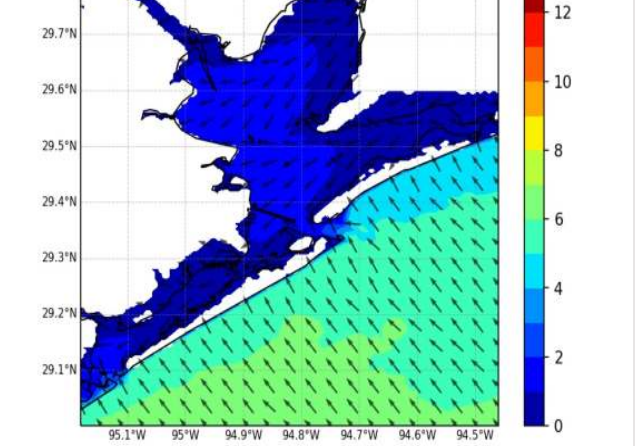
Precip Image: 11 AM CT



Wind Speed: 9 AM CT



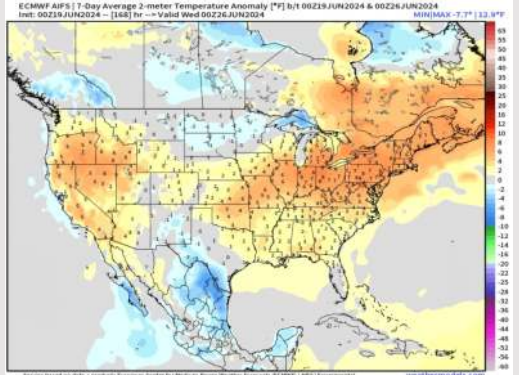
NWPS Significant Wave Height (ft) and Peak Wave Direction Hour 42 (12Z21JUN2024)



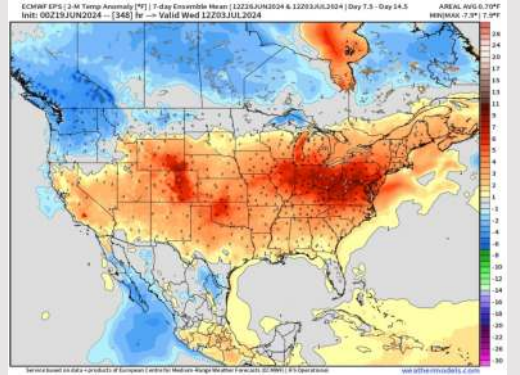
Max Wave Heights: 7 AM CT

Houston Pilots: 6/19/24

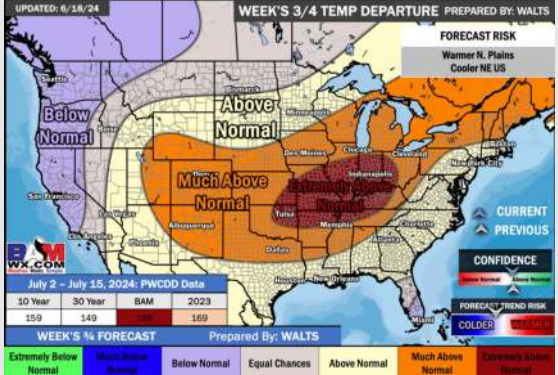
Next 7 Day Temperature Departure



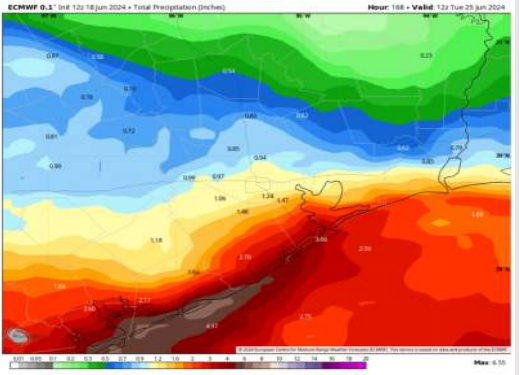
8-14 Day Temperature Departure



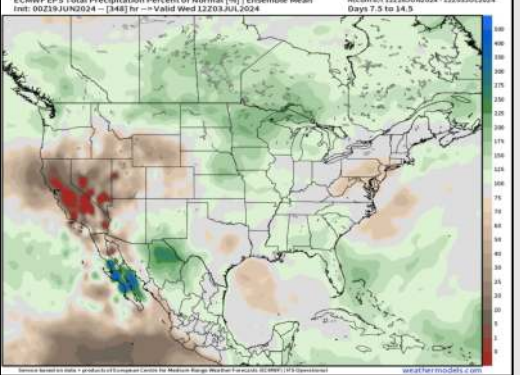
15-30 Day Temperature Departure



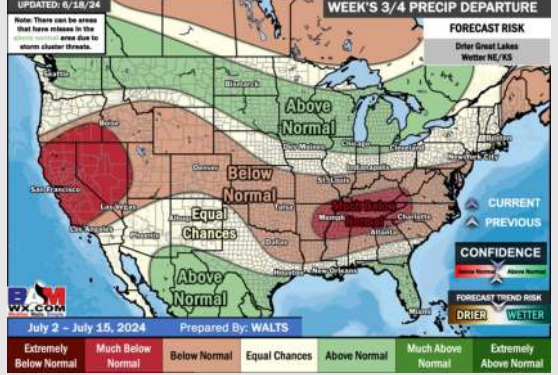
Next 7 Day Total Precipitation



8-14 Day % of Average Precip.



15-30 Day % of Average Precip.



- Temps are expected to be near / slightly below normal for the week 1 timeframe. Monitoring risk for moderate/heavy rain now through THU associated with a tropical system. **(Check custom graphic for more information)**
- Above normal precipitation chances are at play during the week 2 timeframe. Temps are expected to be slightly above normal for week 2.
- Above normal chances for precipitation and near normal temperatures are favored in the weeks 3/4 timeframe.