

Houston Pilots Forecast Package

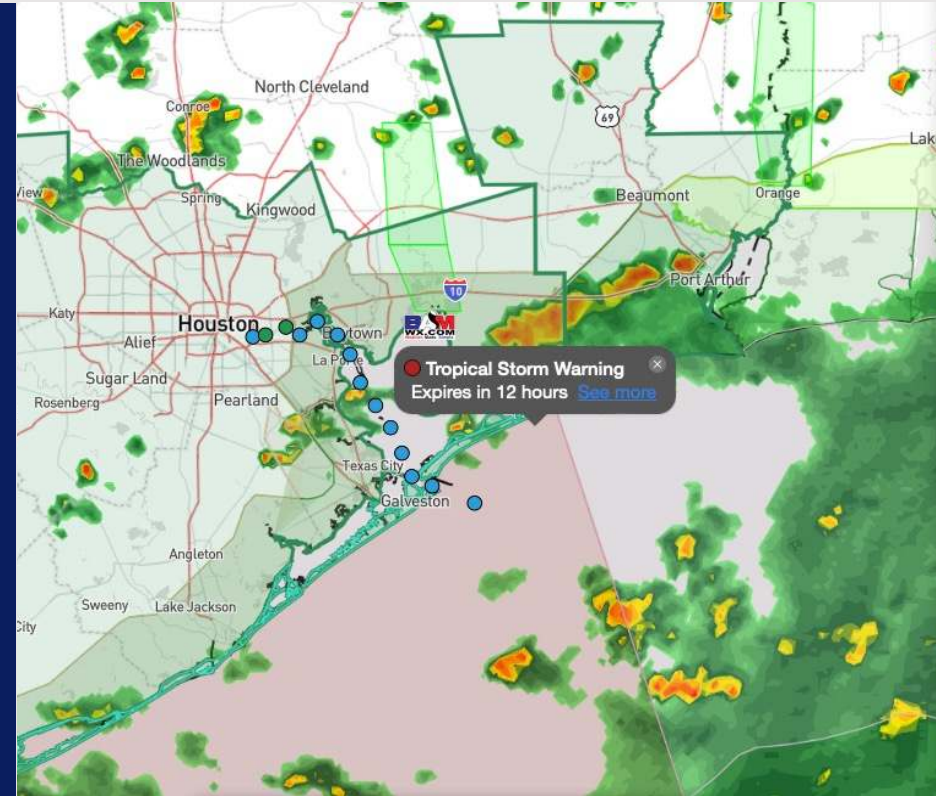


Updated: 2:00 PM CT
Tuesday, June 18, 2024

Forecaster: Hope Kleitsch

Weather Headlines

- Stronger wind gusts will continue across the area now through FRI.
- Zulu port conditions in effect. See slides below for timing and anticipated wave heights.
- Scattered to widespread showers/storms expected to continue through now into THU.
- Check custom graphic below on current thinking for multi day heavy rain event.



Current Radar: 2:00 PM CT

As always, please do not hesitate to reach out to us with any forecast questions via the chat option on Clarity or our on-call number, **(317)-560-8122** press 1 for forecast questions.



Houston Pilots Wave Height Update



Port Condition	34 KTS+ Sustained Winds	6 Foot Waves	Time Remaining/Trigger End
Victor	N/A	N/A	N/A
Whiskey	N/A	N/A	N/A
X-Ray	N/A	N/A	N/A
Yankee	N/A	N/A	N/A
Zulu	YES	IN EFFECT	4 AM CT FRI

Port Condition	Trigger Definition	Trigger Reached?
Victor	Hurricane entering/developing in Gulf of Mexico that's a threat to the area	No
Whiskey	72 hours prior to predicted sustained winds of 34+ KTS	No
X-Ray	48 hours prior to predicted sustained winds of 34+ KTS or 6' wave height	No
Yankee	24 hours prior to predicted sustained winds of 34+ KTS or 6' wave height	No
Zulu	12 hours prior to predicted sustained winds of 34+ KTS or 6' wave height	YES

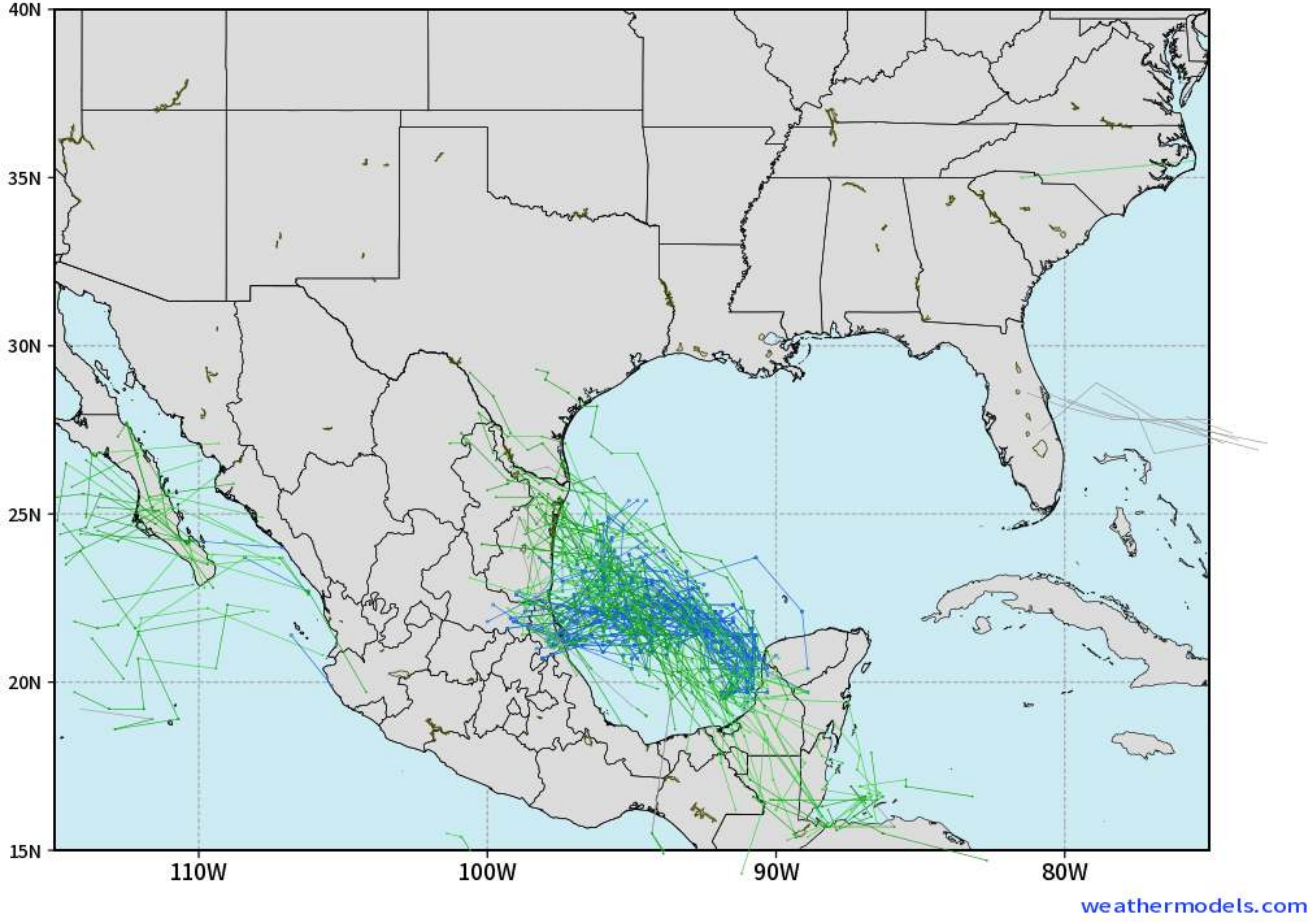
Wave heights ~6 ft towards Station 11/12 and the Boarding Station are anticipated to continue to gradually increase in height throughout the week, remaining at 6+ ft until ~4 AM FRI. **More details on progression on wave height slide.**

Houston Pilots Tropical Update

European Model Next 10 Days - Tropical Tracks

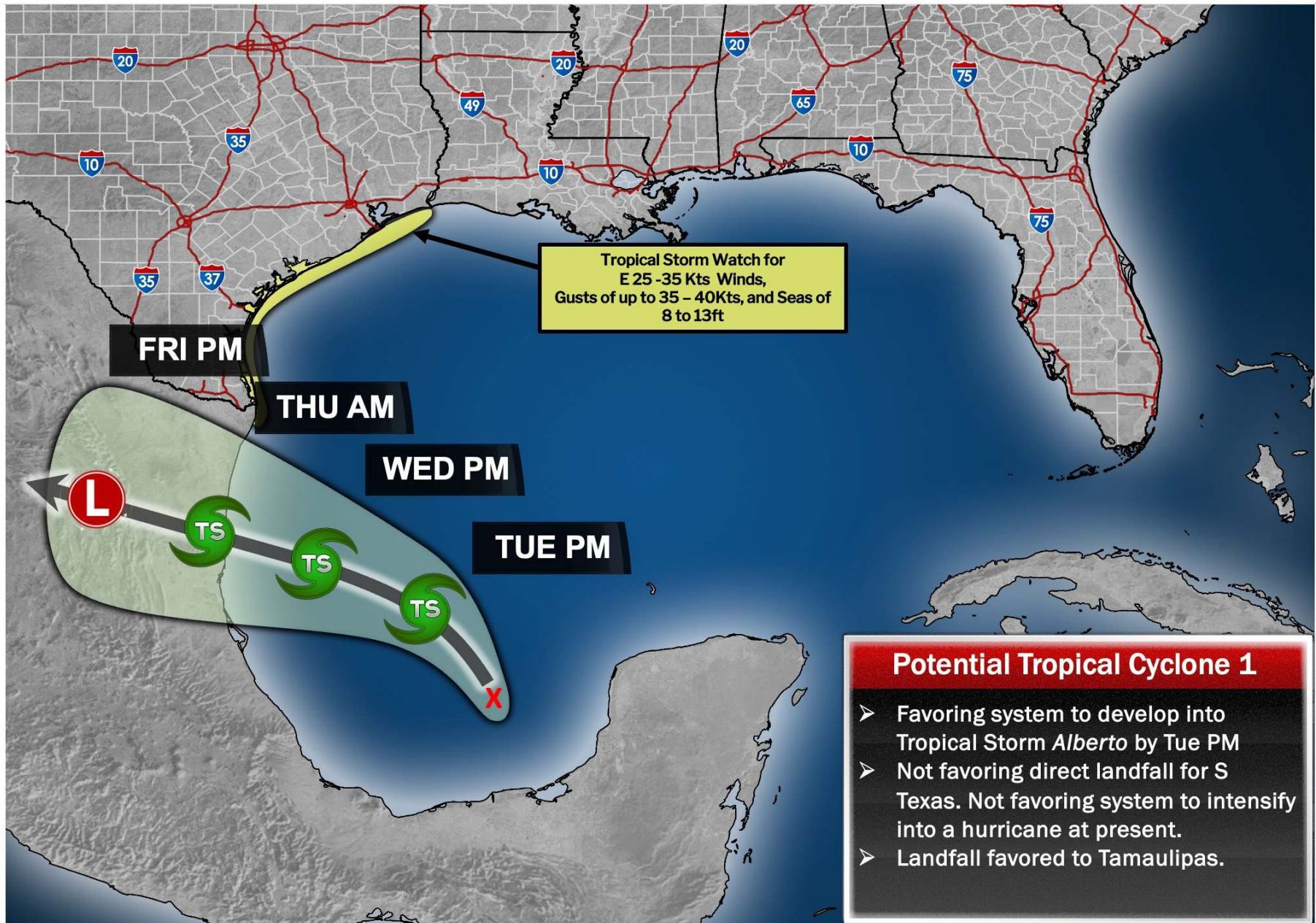
ECMWF GULF EPS Cyclone Locations --> Next [10-days]
INIT: 00Z18JUN2024 --> UNTIL 00Z28JUN2024

o-o ENSEMBLE MEAN
o-o 1000 - 1010 hPa
o-o 980 - 999 hPa
o-o 960 - 979 hPa
o-o 950 - 959 hPa
o-o < 950 hPa



Monitoring a tropical disturbance with the potential to become a Tropical Depression in the SW Gulf of Mexico through the 21st.

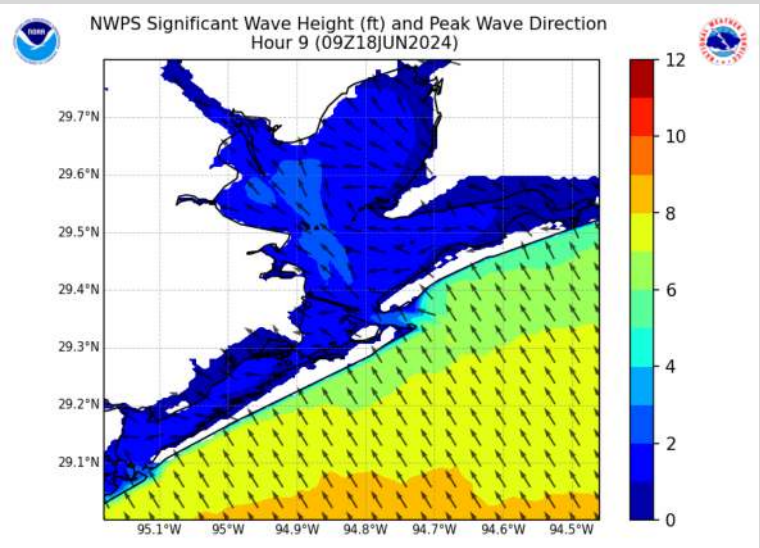
As of TUE AM, direct impact with Houston is not favored. Periods of moderate/heavy rain and higher seas will be possible during that timeframe.



Houston Pilots Wave Height Update



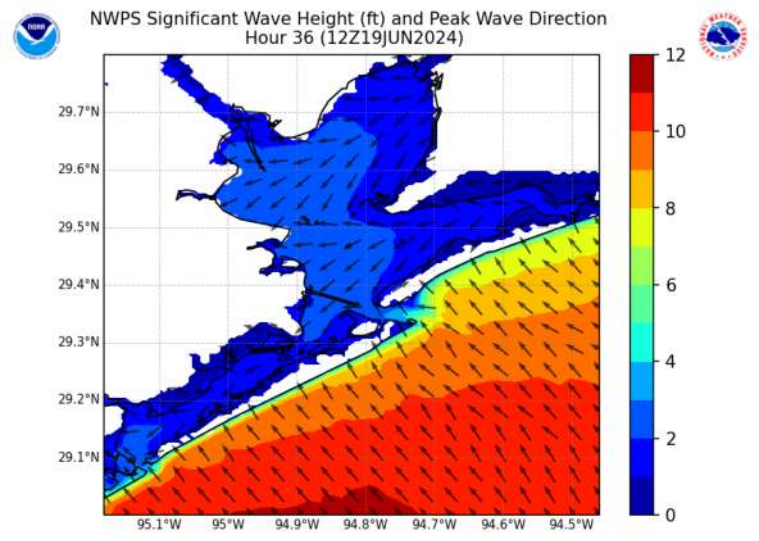
Significant Wave Height Image



4 AM CT TUE

Wave heights of 6+ ft will continue to increase over the next into early AM TUE.

The highest waves are favored to arrive around 4 AM WED and continue through 6 PM THU. Over this time frame, favored wave heights are ~8 - 10ft at station 11/12 and the Boarding Station. An occasional 11-12 ft wave around the Boarding Station cannot be ruled out.



7 AM CT WED

(PEAK HEIGHTS)

Wave heights very slowly recede across THU. Heights are currently anticipated to drop below 6 ft threshold around 4 AM FRI.

Houston Pilots Visibility Chart (miles)



Forecast Confidence

Above Normal

Below Normal

Time	Tue 1pm	Tue 2pm	Tue 3pm	Tue 4pm	Tue 5pm	Tue 6pm	Tue 7pm	Tue 8pm	Tue 9pm	Tue 10pm	Tue 11pm	Wed 12am	Wed 1am	Wed 2am	Wed 3am	Wed 4am	Wed 5am	Wed 6am	Wed 7am	Wed 8am	Wed 9am	Wed 10am	Wed 11am	Wed 12pm
610 Bridge	10	10	10	10	10	10	10	10	10	10	10	10	10	10	6	10	10	10	10	9	6	3	4	6
Kinder 1	10	10	10	10	10	10	10	10	10	10	10	10	10	10	6	10	10	10	10	9	6	3	4	6
Greens Bayou	10	10	10	10	10	10	10	10	10	10	10	10	10	10	6	10	10	10	10	9	6	4	5	8
Shell Crude	10	10	10	10	10	10	10	10	10	10	10	10	10	10	6	10	10	10	10	9	6	4	4	6
Lynchburg Ferries	10	10	10	10	10	10	10	10	9	10	10	10	10	10	7	10	10	10	10	9	6	4	5	8
Exxon 3	10	10	10	10	10	10	10	10	10	10	10	10	10	10	6	10	10	10	10	9	6	4	5	8
Morgans Point	10	10	10	10	10	10	10	10	10	10	10	10	10	9	6	10	10	10	10	9	6	4	5	8
75/76	10	10	10	10	10	10	10	10	10	10	7	6	6	6	6	7	9	10	9	9	7	5	6	5
63/64	10	10	10	10	10	10	6	10	10	10	6	6	6	6	6	7	9	10	9	9	7	6	6	5
51/52	10	10	10	10	9	10	6	10	6	10	6	6	6	6	6	7	9	10	10	9	7	6	6	4
37/38	10	10	10	10	9	10	6	10	6	9	4	6	6	5	6	7	9	10	10	9	7	6	6	4
25/26	10	10	10	10	9	10	6	10	4	6	4	5	5	5	5	6	10	10	10	9	7	6	6	4
11/12	10	10	10	10	6	7	7	9	4	5	3	5	5	5	5	6	9	10	10	9	7	6	6	6
1 & 2 Bravo	10	10	10	6	5	3	5	6	5	4	4	5	4	3	4	5	6	7	7	6	6	5	5	9

NOTE: This is automated data that may/may not agree with the official BAM thinking that's found on the daily slides or special visibility report slides. This data should be used as a guide only

Houston Pilots Wind Chart



Forecast Confidence



Example

Sustained wind 13 Knots
Gusts 18 Knots
Wind from the N

WS: 13
G:18
N

Time Knots	Tue 1pm	Tue 2pm	Tue 3pm	Tue 4pm	Tue 5pm	Tue 6pm	Tue 7pm	Tue 8pm	Tue 9pm	Tue 10pm	Tue 11pm	Wed 12am	Wed 1am	Wed 2am	Wed 3am	Wed 4am	Wed 5am	Wed 6am	Wed 7am	Wed 8am	Wed 9am	Wed 10am	Wed 11am	Wed 12pm	
610 Bridge	13 25 E	13 26 E	13 26 E	13 27 E	13 26 E	13 25 E	12 25 E	12 25 E	13 26 ENE	13 26 E	13 25 E	13 25 E	12 25 E	12 25 ENE	12 25 E	12 24 ENE	13 25 ENE	13 25 ENE	13 25 NE	13 25 NE	13 25 ENE	13 25 ENE	13 26 ENE	13 26 ENE	
Kinder 1	12 25 E	13 25 E	13 26 E	13 26 E	13 26 E	13 25 E	12 25 E	12 25 E	12 26 ENE	13 26 E	13 25 ENE	13 25 E	12 25 E	12 25 ENE	12 25 E	12 24 ENE	12 25 ENE	13 25 ENE	13 25 NE	13 25 NE	13 25 ENE	13 25 ENE	13 25 ENE	13 26 ENE	
Greens Bayou	12 24 E	13 24 E	13 25 E	13 25 E	13 25 E	13 25 E	12 25 E	12 25 E	12 25 E	13 26 ENE	13 25 ENE	12 25 E	12 25 E	12 25 ENE	12 25 E	12 24 ENE	12 25 ENE	12 25 NE	12 25 NE	13 25 NE	13 25 NE	13 25 ENE	13 25 ENE	13 25 ENE	
Shell Crude	12 24 E	13 24 E	13 25 E	13 26 E	13 25 E	13 25 E	12 25 E	12 25 E	13 26 ENE	13 26 E	13 25 ENE	13 25 E	12 25 E	12 25 ENE	12 25 E	12 25 ENE	12 25 ENE	12 25 NE	12 25 NE	13 25 NE	13 25 NE	13 25 ENE	13 25 ENE	13 25 ENE	
Lynchburg Ferries	13 23 E	13 23 E	13 25 E	13 25 E	13 25 E	13 25 E	12 25 E	12 25 E	12 26 E	13 26 E	13 25 E	12 25 E	11 25 E	11 25 ENE	11 25 E	11 24 ENE	12 25 ENE	12 25 NE	12 24 NE	13 25 NE	13 25 NE	13 25 ENE	13 24 ENE	13 24 ENE	
Exxon 3	15 24 E	16 24 E	16 25 E	16 26 E	17 26 E	17 25 E	17 25 E	17 26 E	19 28 E	19 28 ENE	19 27 E	19 27 E	19 26 E	19 26 E	19 26 E	19 26 ENE	19 26 ENE	19 26 ENE	19 25 ENE	18 25 ENE	17 25 ENE	17 25 ENE	17 25 ENE	17 25 ENE	
Morgans Point	15 24 E	16 25 E	16 25 E	16 26 E	17 26 E	17 26 E	17 26 ENE	18 27 E	19 28 ENE	19 28 E	20 29 E	20 28 E	19 27 E	19 27 E	19 27 E	19 26 ENE	19 27 ENE	19 26 ENE	19 26 NE	19 26 NE	18 25 ENE	17 25 ENE	17 26 ENE	17 26 ENE	
75/76	17 26 E	18 27 E	19 27 E	19 28 E	19 29 E	19 29 E	20 29 E	21 30 ENE	21 31 ENE	22 31 E	23 32 E	23 31 E	22 30 E	22 30 E	22 30 E	22 30 ENE	22 30 ENE	21 30 ENE	21 29 ENE	21 29 ENE	20 29 ENE	19 28 ENE	19 28 ENE	19 28 ENE	
63/64	18 27 E	19 28 E	19 29 E	20 30 E	21 30 E	21 30 E	21 30 E	21 30 ENE	22 31 ENE	23 32 E	23 32 E	23 32 E	22 31 E	23 31 E	23 31 E	22 31 E	23 31 ENE	22 31 ENE	22 30 ENE	21 30 ENE	21 30 ENE	21 30 ENE	20 30 ENE	20 30 ENE	
51/52	19 28 E	20 29 E	21 30 E	21 30 E	21 30 E	22 31 E	22 31 E	23 32 E	24 33 E	24 33 E	24 33 ENE	24 33 E	23 32 E	24 33 E	24 33 E	24 32 E	24 32 ENE	23 32 ENE	23 32 ENE	23 32 ENE	23 32 ENE	22 32 ENE	22 32 ENE	21 31 ENE	
37/38	19 28 E	20 29 E	21 31 E	21 31 E	21 31 E	22 32 E	22 32 E	23 33 E	24 34 E	24 34 E	24 34 ENE	24 34 E	24 32 E	24 33 E	24 33 E	24 32 E	24 33 E	24 32 E	23 32 E	23 32 E	23 32 ENE	23 32 ENE	23 32 ENE	22 32 ENE	
25/26	19 28 E	20 30 E	21 31 E	21 31 E	21 32 E	21 32 E	21 33 E	23 34 E	23 34 E	23 34 E	23 34 E	23 34 E	23 32 E	23 33 E	23 33 E	23 32 E	23 33 E	23 32 E	22 32 E	22 32 E	22 32 ENE	22 32 ENE	22 32 ENE	22 32 ENE	
11/12	18 28 E	20 29 E	21 30 E	21 31 E	20 31 E	20 32 E	20 32 E	21 33 E	21 33 E	21 33 E	21 33 E	21 33 E	21 32 E	21 32 E	21 32 E	21 31 E	21 32 E	21 31 E	20 30 E	21 31 E	21 31 E	21 32 E	21 32 E	21 32 E	
1 & 2 Bravo	21 31 E	22 32 E	23 34 E	23 34 E	24 35 E	24 34 E	25 35 E	25 35 E	25 36 E	25 36 E	25 35 E	25 35 E	25 34 E	25 34 E	25 34 E	25 34 E	24 34 E	25 34 E	25 34 E	24 34 E	25 34 E	25 34 E	25 34 ENE	25 35 E	25 36 E

NOTE: This is automated data that may/may not agree with the official BAM thinking that's found on the daily slides. This data should be used as a guide only.

Houston Pilots: Tue. 6/18/2024



Forecast Discussion

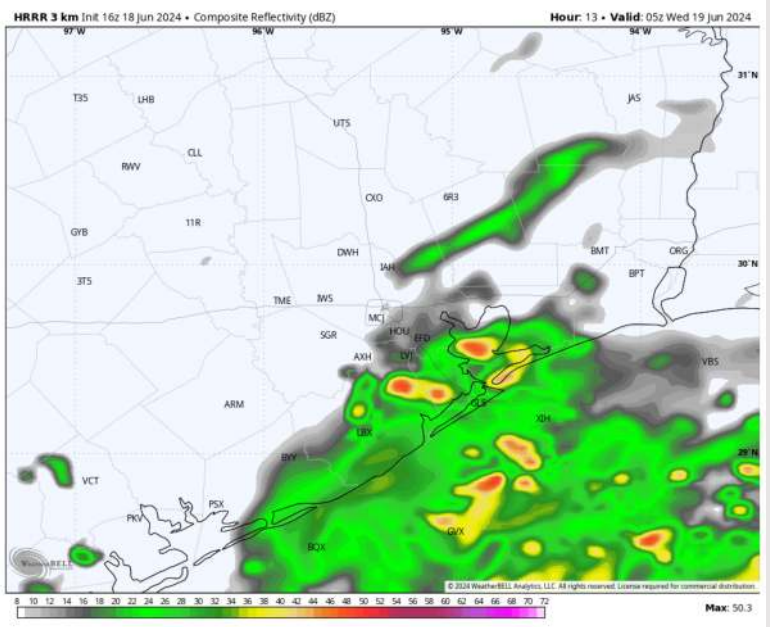
Precip: Scattered showers and thunderstorms (30%) will persist throughout the evening before becoming more widespread (70%) by 9 PM. **Main risks with thunderstorms will be lightning, hail and strong wind gusts.**

Wind: Winds will be out of the east through the evening hours before shifting out of the ENE by 6 PM. **N of Morgan's Point:** Winds at to 12-17 kts through the rest of the day. **Gusts up to 29 kts.** **S of Morgan's Point:** Winds at 28-33 kts for the remainder of the PM. **Gusts up to 38 kts.**

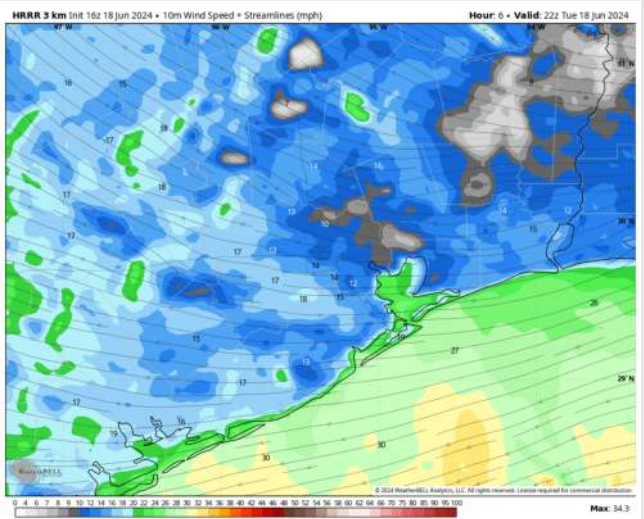
Wave Heights: Wave heights of 6-8 ft will gradually increase for stations 11/12 and the Boarding Station throughout the day.

Visibility: Not anticipating any fog concerns for today, however reduced visibilities possible under heavier downpours.

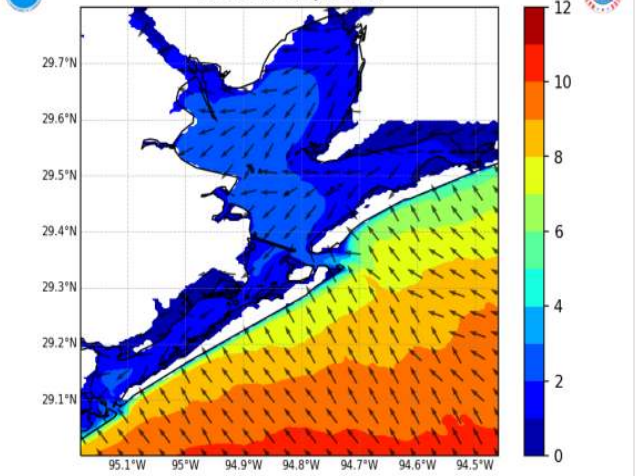
Precip Image: 12 AM CT



Wind Speed: 4 PM CT



NWPS Significant Wave Height (ft) and Peak Wave Direction Hour 27 (03Z19JUN2024)



Max Wave Heights: 10 PM CT

Forecast Discussion

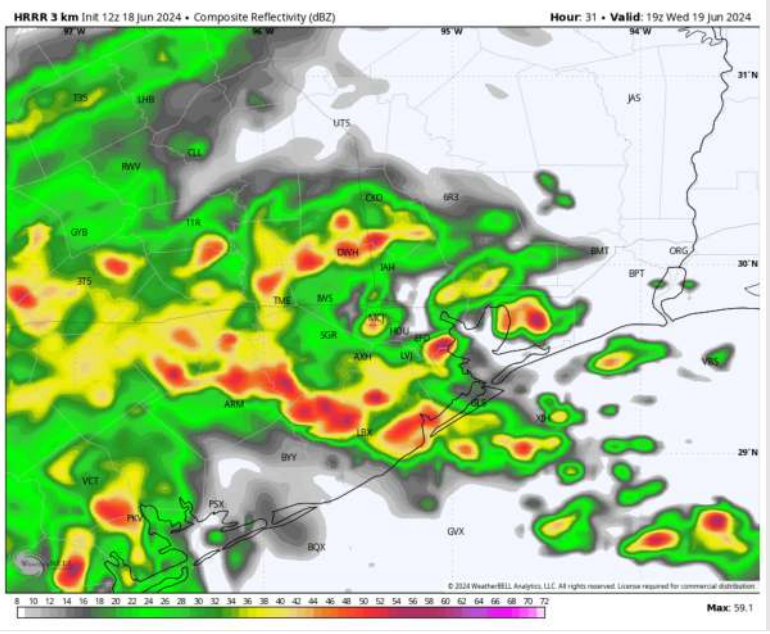
Precip: Widespread showers/thunderstorms continue into WED. Showers and thunderstorms will become more scattered in nature by 4 PM, where they will persist throughout the remainder of the evening. **Main risks with thunderstorms will be lightning, hail and strong wind gusts (details below).**

Wind: Winds will be out of the E/ESE throughout the day WED. **N of Morgan's Point:** Favoring winds at 12-17 kts throughout Wednesday. **Thunderstorm-related wind gusts of 28-33 kts will be possible throughout the day.** **S of Morgan's Point:** Favoring winds at 28-33 kts throughout the entire day. **Thunderstorm-related wind gusts of 38-43 kts in play throughout the day**

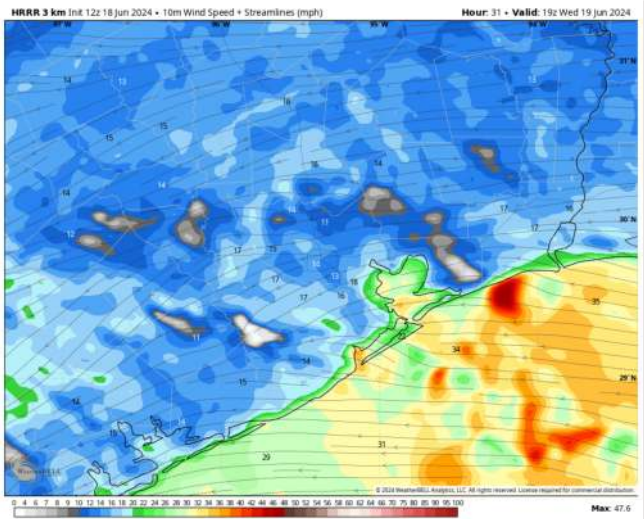
Wave Heights: Wave heights will continue to increasing, reaching 8-10 ft by 3 AM CT WED for Stations 11/12 and the Boarding Station (an occasional 11-12 wave cannot be ruled out). Heights will remain at 8+ ft throughout WED.

Visibility: Not favoring any fog concerns for Wednesday, however reduced visibilities possible under heavier downpours.

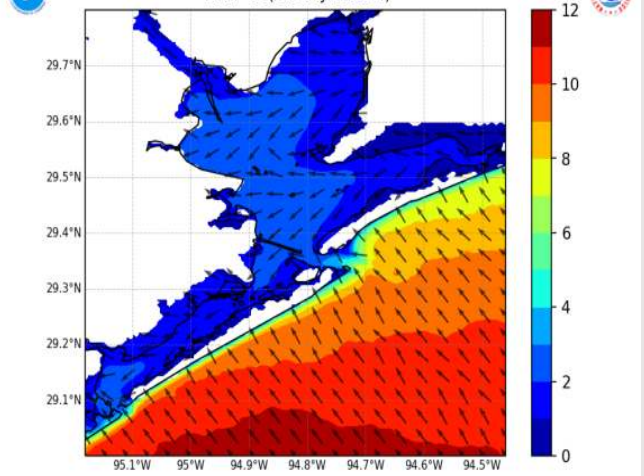
Precip Image: 2 PM CT



Wind Speed 2 PM CT



NWPS Significant Wave Height (ft) and Peak Wave Direction Hour 45 (21Z19JUN2024)



Max Wave Heights: 4 PM CT

Forecast Discussion

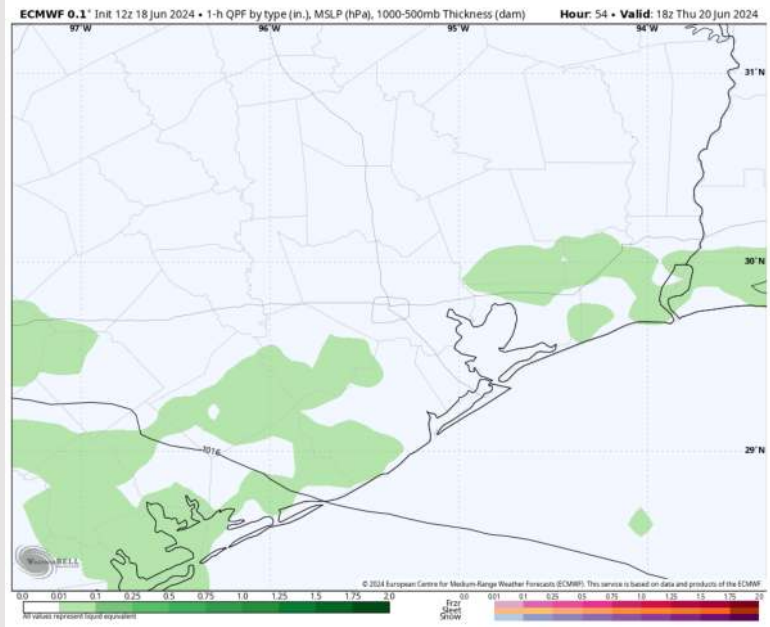
Precip: Lingering scattered rain/storms to continue throughout the day on THU (20%). **A few storms have the potential to produce wind gusts of 35-40 kts.**

Wind: Winds will be out of the E/SE throughout the day THU. **N of Morgan's Point:** Winds will be at 9-14 kts for the entire day. **S of Morgan's Point:** Winds at 22-26 kts through the day on THU. **Non-thunderstorm wind gusts of 28-33 kts will be possible S of Morgan's Point throughout the day and N of Morgan's Point from 10 AM to 6 PM.**

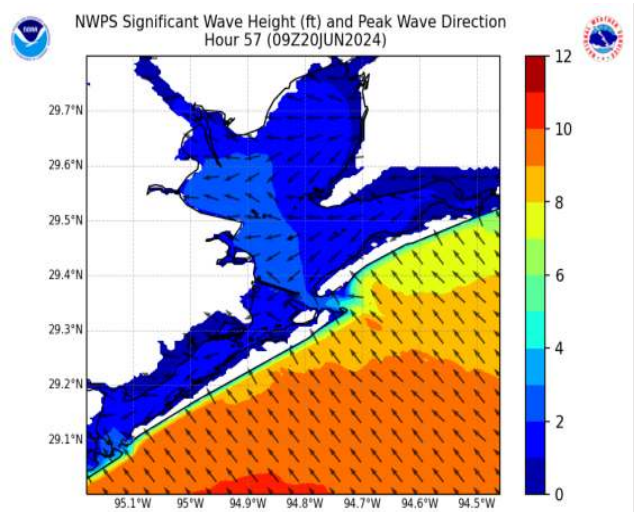
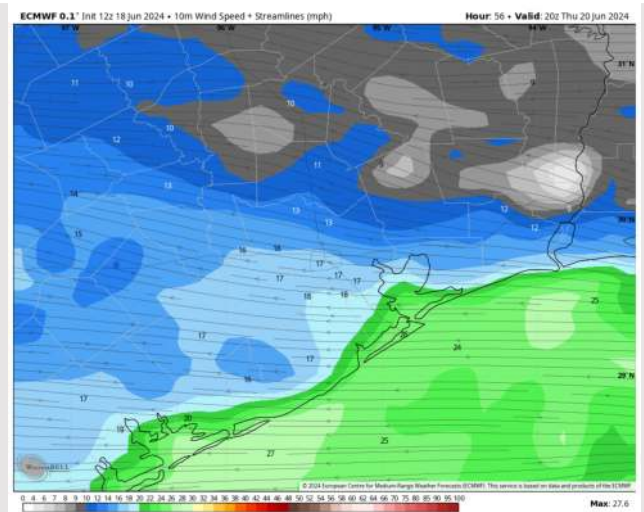
Wave Heights: Wave heights of 8-10 ft will continue for Stations 11/12 and the Boarding Station through ~4 AM CT THU. After 4 AM, wave heights will gradually decrease, however remain above 6 ft throughout all of THU.

Visibility: Not anticipating any fog concerns for Thursday, however reduced visibilities possible under heavier downpours.

Precip Image: 1 PM CT

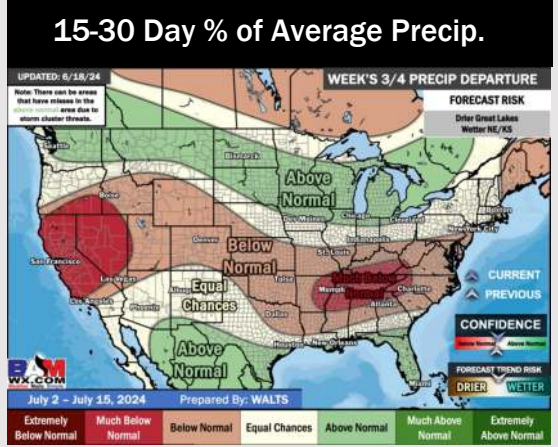
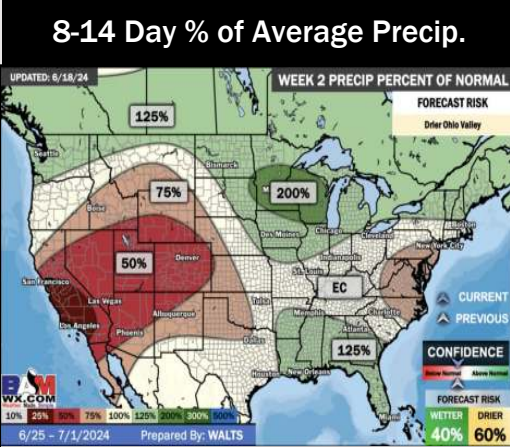
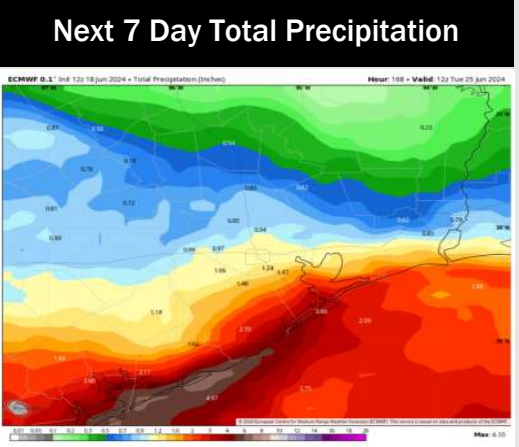
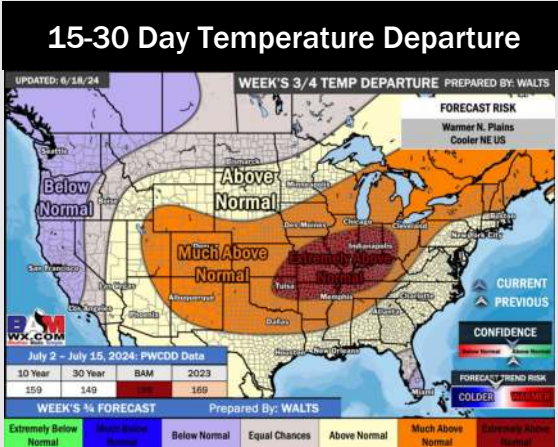
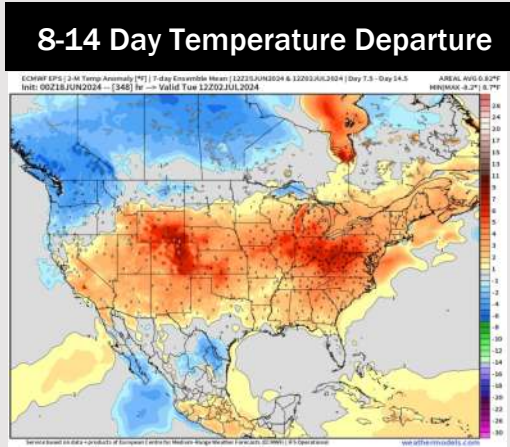
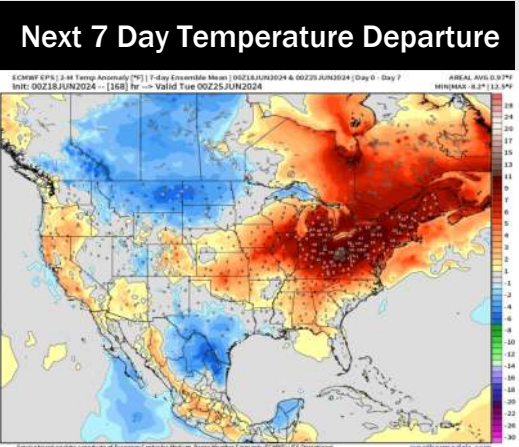


Wind Speed:
3 PM CT



Max Wave
Heights:
4 AM CT

Houston Pilots: 6/17/24



- Temps are expected to be near / slightly below normal for the week 1 timeframe. Monitoring risk for moderate/heavy rain through THU associated with a tropical system. (Check custom graphic for more information)
- Above normal precipitation chances are at play during the week 2 timeframe. Temps are expected to be near normal for week 2.
- Above normal chances for precipitation and near normal temperatures are favored in the weeks 3/4 timeframe.