

Houston Pilots Forecast Package

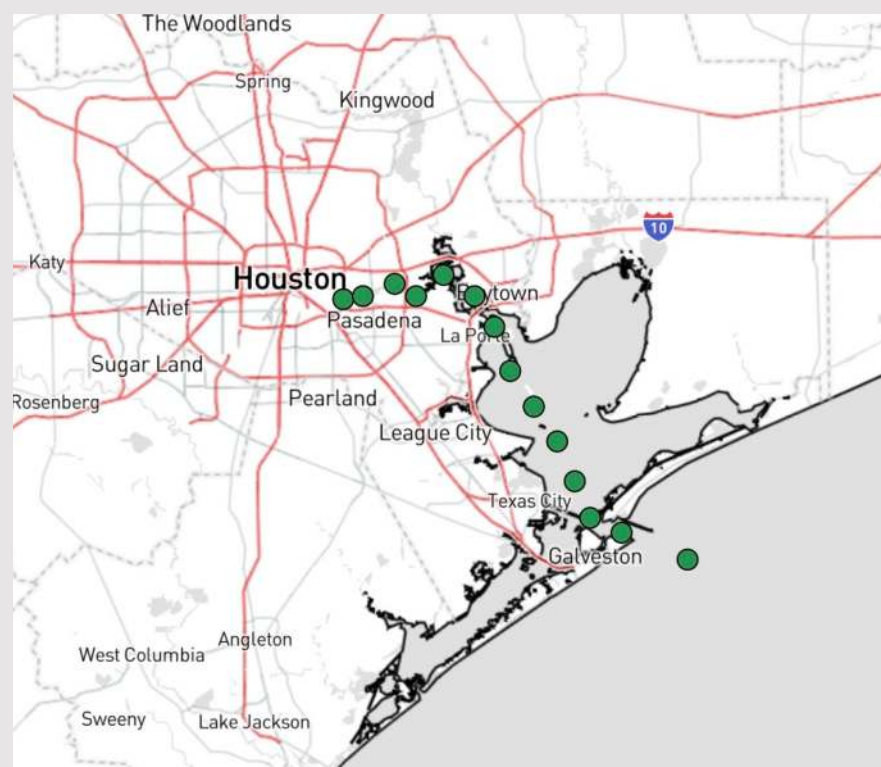


Updated: 2:00 PM CT
Monday, June 3, 2024

Forecaster: Graham Martin

Weather Headlines

- Winds are expected to become gradually elevated to start the week, especially S of Morgan's Point.
- Drier conditions favored for the first half of the week, with only low-end precip chances.
- **Wave heights for 11/12 and Boarding Station not favored to exceed 3.5 ft today. Next potential to see 4ft+ to be on 6/5. See wave height slide for more info.**



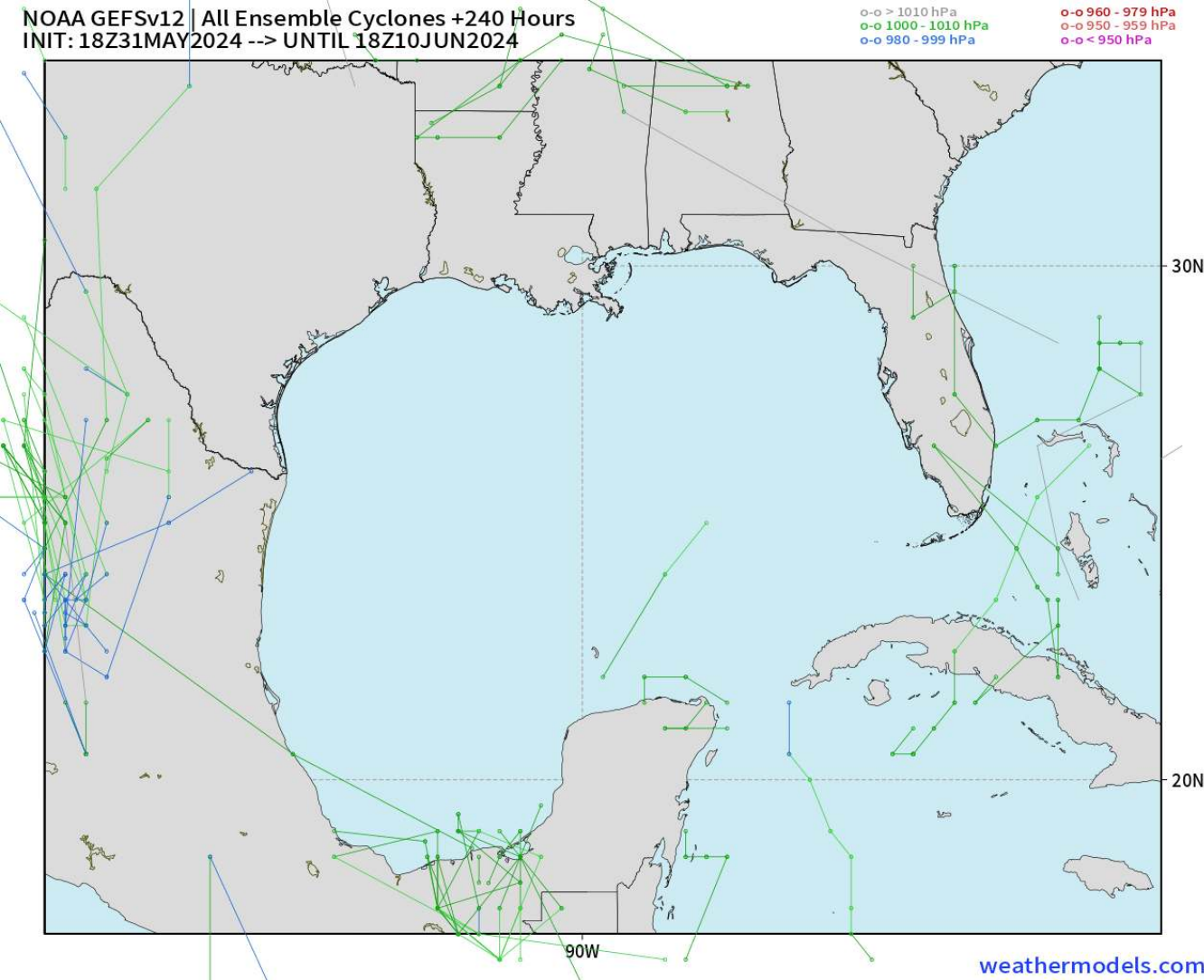
Current Radar: 2:00 PM CT



As always, please do not hesitate to reach out to us with any forecast questions via the chat option on Clarity or our on-call number, **(317)-560-8122** press **1** for forecast questions.

Houston Pilots Tropical Update

American Model Next 10 Days - Tropical Tracks

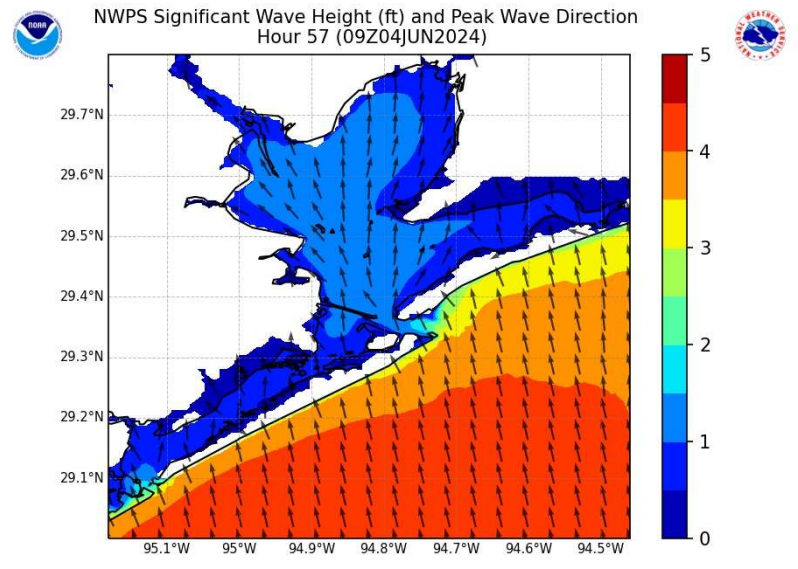


Tropical Development in the Gulf of Mexico is not favored in the next 7-10 days.

Houston Pilots Wave Height Update

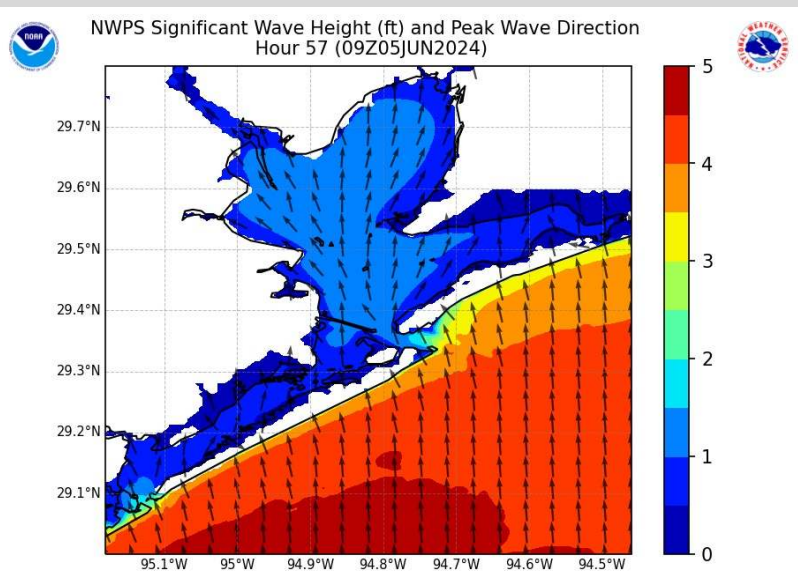


Significant Wave Height Image



5 AM CT TUE

Periods of strong winds will result in increasing wave heights TUE AM. By 11AM TUE waves heights will be in the 3 – 3.5 ft range at the Boarding Station.



5 AM CT WED

Waves are favored to continue to slowly increase throughout the PM on MON and into TUE AM. By 5 AM WED favoring wave heights in the 4' – 4.5' range near the Boarding Station. These will continue through WED AM. Waves will not be on the decrease until WED PM.

Houston Pilots Visibility Chart (miles)



Forecast Confidence



Time	Mon 2pm	Mon 3pm	Mon 4pm	Mon 5pm	Mon 6pm	Mon 7pm	Mon 8pm	Mon 9pm	Mon 10pm	Mon 11pm	Tue 12am	Tue 1am	Tue 2am	Tue 3am	Tue 4am	Tue 5am	Tue 6am	Tue 7am	Tue 8am	Tue 9am	Tue 10am	Tue 11am	Tue 12pm	Tue 1pm
610 Bridge	10	10	10	10	10	10	10	10	10	10	10	10	10	10	10	10	9	6	4	5	6	9	9	10
Kinder 1	10	10	10	10	10	10	10	10	10	10	10	10	10	10	10	10	9	6	4	5	6	9	9	10
Greens Bayou	10	10	10	10	10	10	10	10	10	10	10	10	10	10	10	10	9	6	4	5	6	7	9	10
Shell Crude	10	10	10	10	10	10	10	10	10	10	10	10	10	10	10	9	9	6	4	5	6	7	9	10
Lynchburg Ferries	10	10	10	10	10	10	10	10	10	10	10	10	10	10	10	10	9	6	4	5	6	7	9	10
Exxon 3	10	10	10	10	10	10	10	10	10	10	10	10	10	10	10	9	9	6	4	5	6	7	9	10
Morgans Point	10	10	10	10	10	10	10	10	10	10	10	10	10	10	10	9	9	6	4	5	6	7	7	10
75/76	10	10	10	10	10	10	9	10	10	10	10	10	10	10	9	9	7	6	4	4	5	6	6	10
63/64	10	10	10	10	10	10	9	10	10	10	10	10	10	10	9	9	7	6	4	4	5	6	6	10
51/52	10	10	10	10	10	10	9	10	10	10	10	10	10	9	7	9	7	5	4	4	5	5	6	9
37/38	10	10	10	10	10	10	9	10	10	10	10	10	10	9	7	9	7	5	4	4	5	5	6	9
25/26	10	10	10	10	10	9	6	10	10	10	10	10	10	9	9	9	7	5	4	4	5	5	5	9
11/12	10	10	10	10	10	9	6	10	10	10	10	10	10	9	6	7	7	5	4	4	5	5	5	9
1 & 2 Bravo	7	6	6	6	7	6	6	7	9	7	9	7	6	6	6	6	6	4	4	3	4	4	4	9

NOTE: This is automated data that may/may not agree with the official BAM thinking that's found on the daily slides or special visibility report slides. This data should be used as a guide only

Houston Pilots Wind Chart



Forecast Confidence



Example

Sustained wind 13 Knots
Gusts 18 Knots
Wind from the N

WS: 13
G:18
N

Time Knots	Mon 2pm	Mon 3pm	Mon 4pm	Mon 5pm	Mon 6pm	Mon 7pm	Mon 8pm	Mon 9pm	Mon 10pm	Mon 11pm	Tue 12am	Tue 1am	Tue 2am	Tue 3am	Tue 4am	Tue 5am	Tue 6am	Tue 7am	Tue 8am	Tue 9am	Tue 10am	Tue 11am	Tue 12pm	Tue 1pm
610 Bridge	12	12	13	12	12	11	11	10	9	9	9	9	9	9	9	8	8	8	9	9	10	11	11	11
	23	24	24	24	23	21	21	20	19	19	19	18	18	18	18	17	17	16	17	19	20	21	23	23
	S	S	S	SSE	SSE	SSE	SSE	SSE	SSE	SSE	SSE	SSE	S	SSE	S	S	S	S	S	S	S	S	S	S
Kinder 1	11	12	12	12	11	11	10	9	9	9	9	9	9	9	8	8	8	9	9	10	11	11	11	11
	23	24	24	24	23	21	21	20	19	19	19	18	18	18	18	17	17	16	17	19	20	21	23	23
	S	S	SSE	SSE	SSE	SSE	SSE	SSE	SSE	SSE	SSE	SSE	S	SSE	S	S	S	S	S	S	S	S	S	S
Greens Bayou	11	12	12	12	12	11	10	9	9	9	9	9	9	9	8	8	8	9	9	10	11	11	11	11
	23	23	23	23	23	21	20	20	19	19	18	18	18	18	17	17	16	17	19	20	21	22	22	22
	S	S	SSE	SSE	SSE	SSE	SSE	SSE	SSE	SSE	SSE	SSE	S	SSE	S	S	SSE	S	S	S	S	S	S	S
Shell Crude	11	12	12	12	11	11	10	9	9	9	9	9	9	9	8	8	8	9	9	10	11	11	11	11
	23	23	23	23	22	21	20	20	19	19	19	18	18	18	18	17	17	17	17	19	20	21	22	22
	S	S	SSE	SSE	SSE	SSE	SSE	SSE	SSE	SSE	SSE	SSE	S	SSE	S	S	S	S	S	S	S	S	S	S
Lynchburg Ferries	12	13	13	13	12	11	10	9	9	9	9	9	8	8	8	8	8	9	9	10	11	11	11	11
	23	23	23	23	22	21	20	20	19	19	19	18	18	18	18	17	17	16	17	19	20	21	22	22
	SSE	SSE	SSE	SSE	SSE	SSE	SSE	SSE	SSE	SSE	SSE	SSE	S	S	SSE	S	SSE	S	S	S	S	S	S	S
Exxon 3	14	15	15	15	15	14	14	14	13	14	14	13	14	14	13	13	13	13	13	13	13	13	14	14
	23	23	23	23	23	21	21	21	21	21	20	20	20	20	19	19	18	19	19	21	21	23	23	23
	SSE	SSE	SSE	SSE	SSE	SSE	SSE	SSE	SSE	SSE	SSE	S	S	S	S	S	S	S	S	S	S	S	S	S
Morgans Point	14	15	15	15	15	14	14	14	13	14	14	13	14	14	14	13	13	13	13	13	13	13	14	14
	23	23	23	23	23	22	21	21	21	21	20	20	20	20	20	19	19	19	19	21	21	23	23	23
	SSE	SSE	SSE	SSE	SSE	SSE	SSE	SSE	SSE	SSE	SSE	S	S	S	S	S	S	S	S	S	S	S	S	S
75/76	15	15	15	16	16	15	15	15	15	15	15	15	15	15	15	15	15	15	15	15	15	15	15	15
	24	24	24	24	24	23	23	23	22	22	22	22	22	22	22	22	22	21	21	21	22	23	23	24
	SSE	SSE	SSE	SSE	SSE	SSE	SSE	SSE	SSE	SSE	SSE	S	S	S	S	S	S	S	S	S	S	S	S	S
63/64	16	16	16	16	16	15	15	15	15	15	15	15	16	16	16	15	15	15	15	15	15	15	15	15
	24	24	24	24	24	23	23	23	22	22	21	22	22	23	23	22	22	21	22	22	22	23	23	24
	SSE	SSE	SSE	SSE	SSE	SSE	SSE	SSE	SSE	SSE	SSE	S	S	S	S	S	S	S	S	S	S	S	S	S
51/52	15	16	16	16	16	15	15	16	15	15	15	15	16	16	16	16	16	15	15	16	15	15	15	15
	23	23	24	24	23	22	22	23	22	22	21	22	22	23	23	23	22	22	23	23	23	23	23	23
	SSE	SSE	SSE	SSE	SSE	SSE	SSE	SSE	SSE	SSE	SSE	S	S	S	S	S	S	S	S	S	S	S	S	S
37/38	15	16	16	16	16	15	15	15	15	15	15	15	16	16	16	16	16	16	16	16	15	15	15	15
	23	23	24	24	23	22	22	23	22	22	21	22	22	23	23	23	22	22	22	22	23	23	23	23
	S	SSE	SSE	SSE	SSE	SSE	SSE	SSE	SSE	SSE	SSE	S	S	S	S	S	S	S	S	S	S	S	S	S
25/26	15	15	15	15	15	15	15	15	15	15	15	15	15	15	16	15	15	15	15	15	15	15	15	15
	23	23	24	23	23	22	22	22	22	21	21	21	22	23	23	23	22	22	22	22	22	23	23	23
	SSE	SSE	SSE	SSE	SSE	SSE	SSE	SSE	SSE	SSE	SSE	S	S	S	S	S	S	S	S	S	S	S	S	S
11/12	15	15	15	15	14	14	14	13	13	13	13	13	14	14	14	15	14	14	15	15	15	15	14	14
	22	23	22	22	22	21	21	21	21	21	21	21	21	22	22	22	22	21	21	21	21	22	22	21
	SSE	SSE	SSE	SSE	SSE	SSE	SSE	SSE	SSE	SSE	SSE	S	S	S	S	S	S	S	S	S	S	S	S	S
1 & 2 Bravo	15	15	15	16	16	15	16	16	16	16	16	15	16	17	17	17	17	16	17	17	16	16	15	15
	23	23	22	23	23	22	23	23	23	22	22	22	23	23	23	23	23	23	23	23	22	23	23	22
	SSE	SSE	SSE	SSE	SSE	SSE	SSE	SSE	SSE	SSE	SSE	S	S	S	S	S	S	S	S	S	S	S	S	S

NOTE: This is automated data that may/may not agree with the official BAM thinking that's found on the daily slides. This data should be used as a guide only.

Forecast Discussion

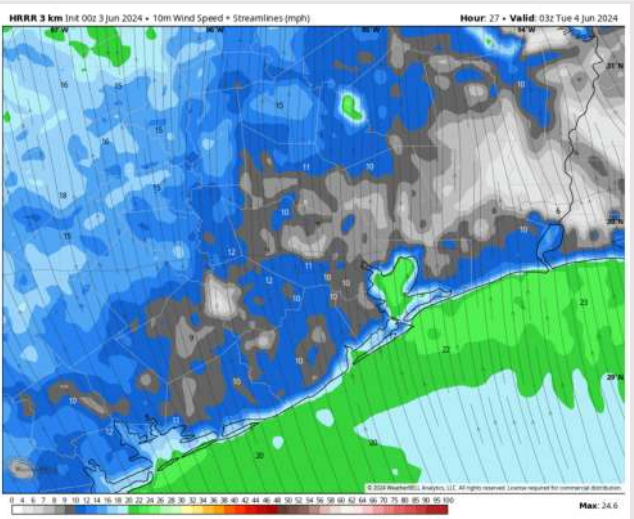
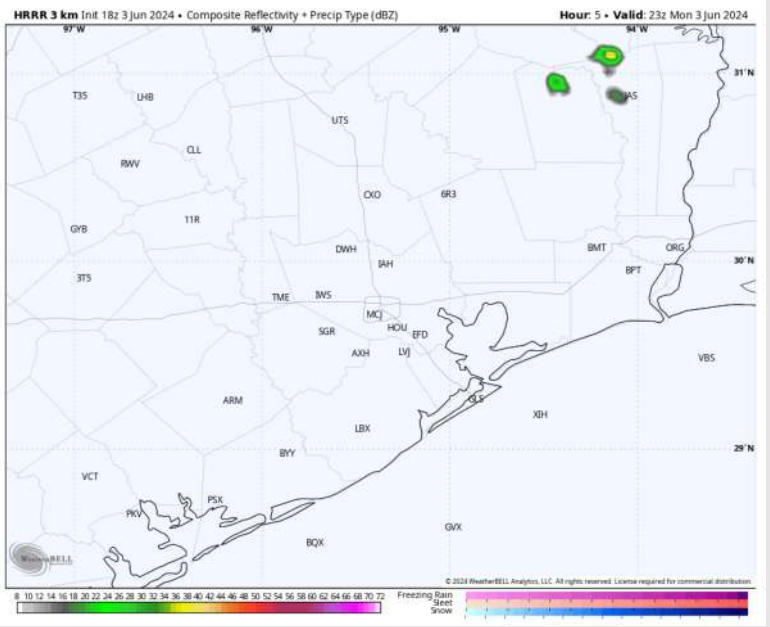
Precip: Isolated light showers will be possible through 6 PM today. Favoring dry conditions to follow.

Wind: Winds will be out of S/SE for the rest of the day. **N of Morgan's Point:** Winds at 10-15 kts expected for the PM. **S of Morgan's Point:** Winds increase to 18-23 kts just after midnight and remain there throughout the day today. **Wind gusts of 22-27 kts possible through the afternoon / evening.**

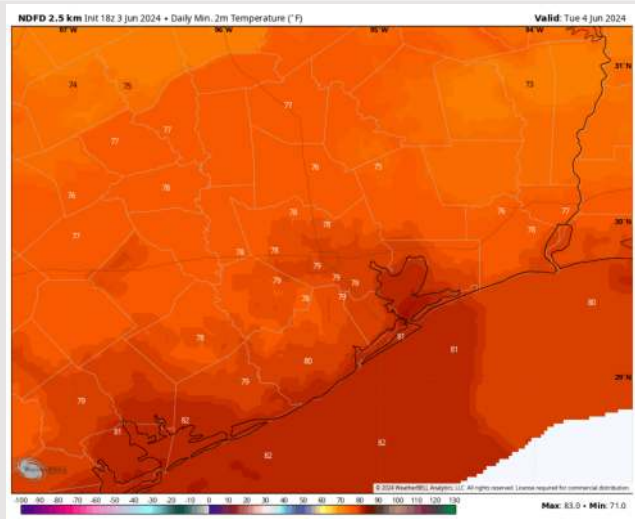
Low Temps: **N of Morgan's Point:** Near/Low 90s F **S of Morgan's Point:** Low/Mid 80s F.

Visibility: Not anticipating any visibility concerns for the rest of the day.

Precip Image: 5 PM CT



Wind Speed:
10 PM CT



Low Temps
TUE AM

Houston Pilots: Tue. 6/4/2024



Forecast Discussion

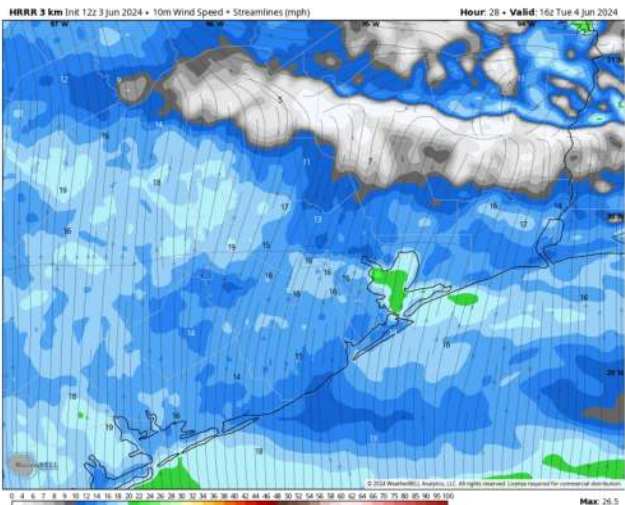
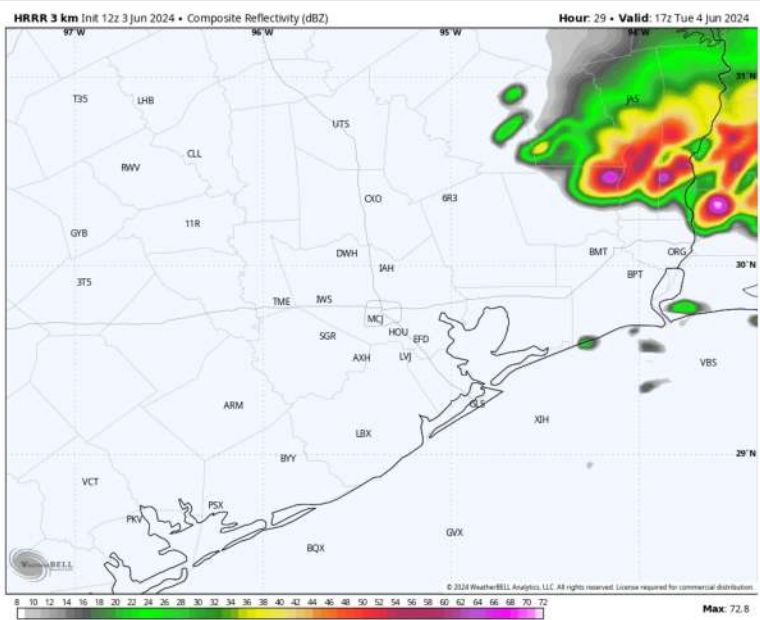
Precip: Favoring dry conditions throughout the day. Expecting storms to stay Northeast of all stations.

Wind: Winds out of the S/SE throughout the day. **N of Morgan's Point:** Favoring winds at 7 – 12 kts through 8AM before increasing to 12 – 17 kts throughout the rest of the day. **S of Morgan's Point:** Winds at 21-26 kts. Winds then calm slightly after 12 PM to 19-24 kts the rest of the day. **Wind gusts of 22-27 kts possible after 4 AM at all stations (locally higher of 30-35 kts between 4 AM and 10 AM S of Morgan's Point)**

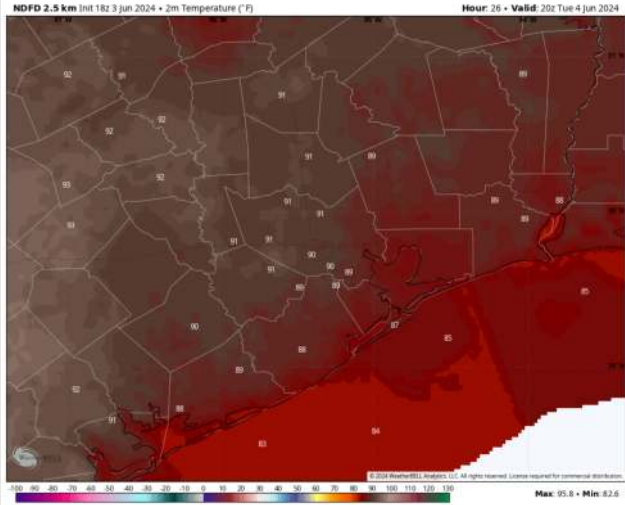
High Temps: **N of Morgan's Point:** Low/mid 90s F. **S of Morgan's Point:** Upper 80s F.

Visibility: Not anticipating any fog risk for Tuesday.

Precip Image: 12 PM CT



Wind Speed
11 AM CT



High Temps
Tuesday

Forecast Discussion

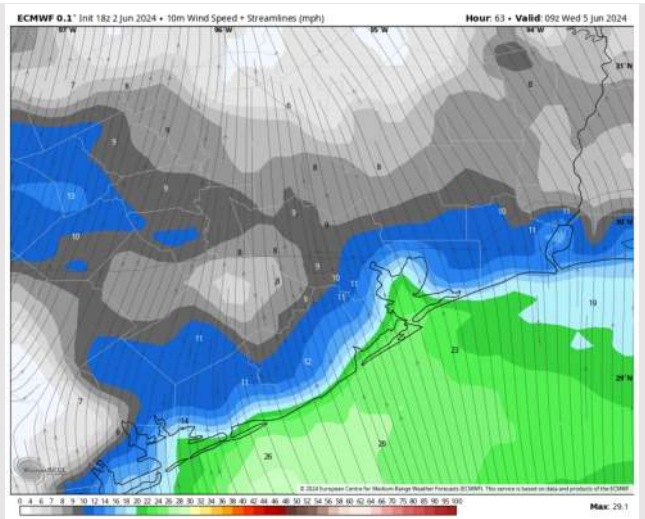
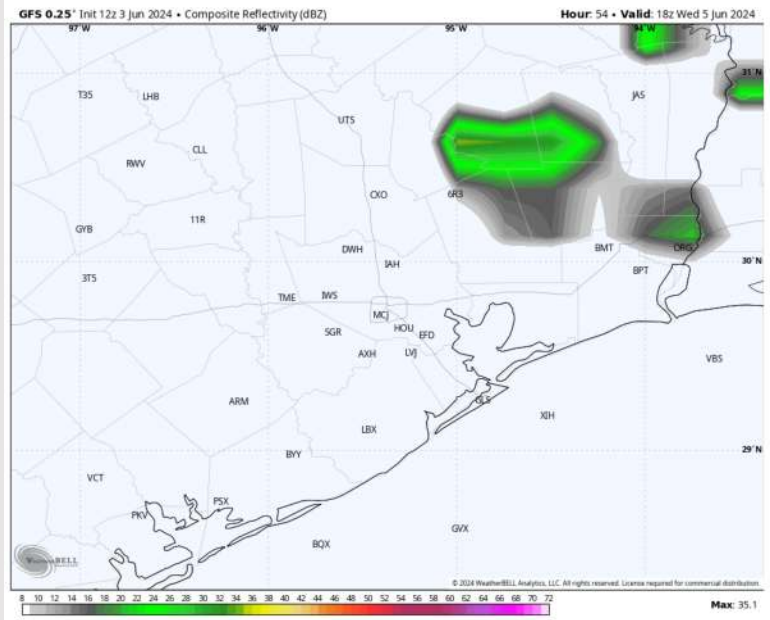
Precip: Aside from a few isolated (10%) shower for locations N of Morgan's Point between 11 AM -4 PM CT, favoring dry conditions throughout the day WED.

Wind: Winds out of the S/SE throughout the day. **N of Morgan's Point:** Favoring winds at 9 – 14 kts throughout the day, aside from a brief calmer period between 6AM – 12PM. **S of Morgan's Point:** Favoring winds at 21 – 26 kts through 7AM, before decreasing to 10 – 15 kts for the rest of the day

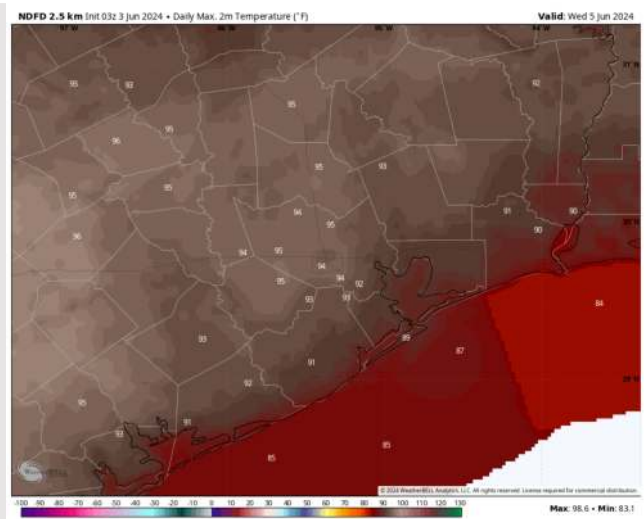
High Temps: **N of Morgan's Point:** Low/mid 90s F. **S of Morgan's Point:** Upper 80s F.

Visibility: Not anticipating any fog for Wednesday.

Precip Image: 1 PM CT

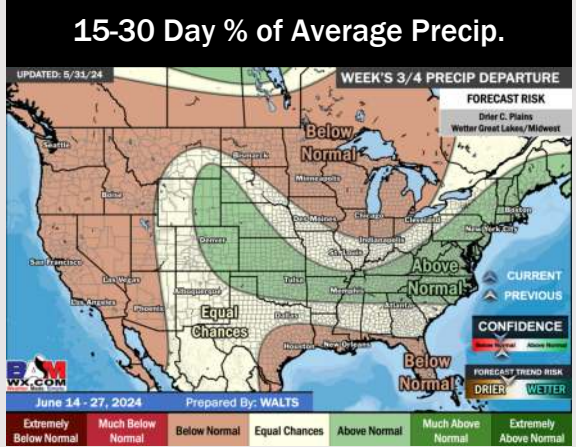
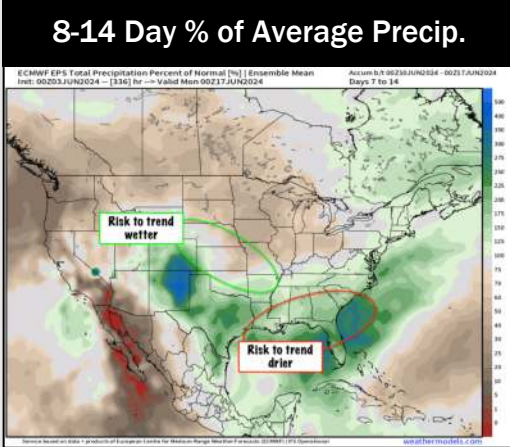
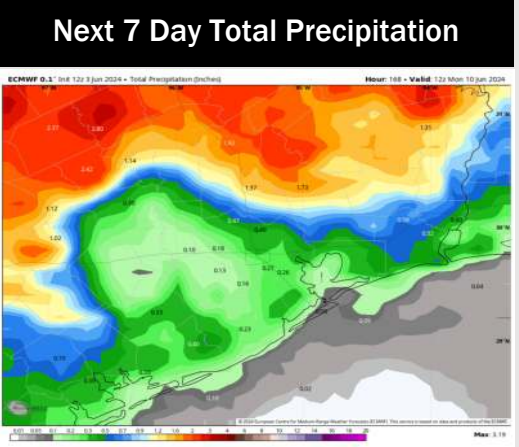
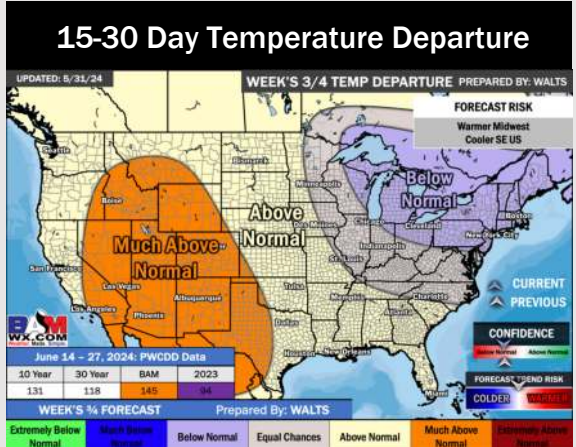
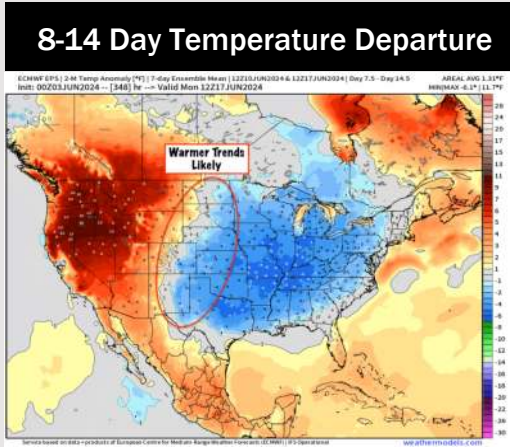
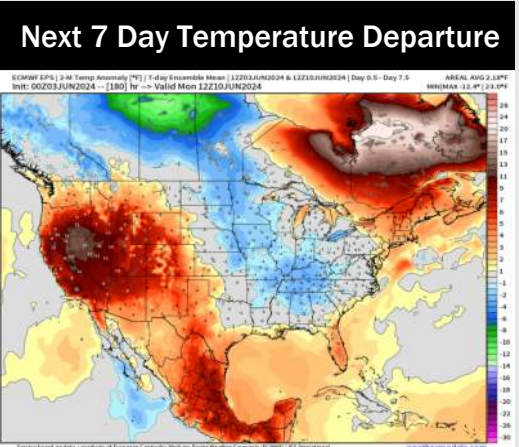


Wind Speed:
4 AM CT



High Temps
Wednesday

Houston Pilots: 6/3/24



- Temps are expected to be above normal for the week 1 timeframe. A less active pattern is favored for the upcoming week with only a few scattered rain chances expected.
- Above normal precipitation chances are at play during the week 2 timeframe. Temps are expected to be near to below. normal.
- Below normal chances for precipitation are favored in the weeks 3/4 timeframe. Temperatures expected to be above normal for the weeks 3 and 4 timeframe.