

# Houston Pilots Forecast Package

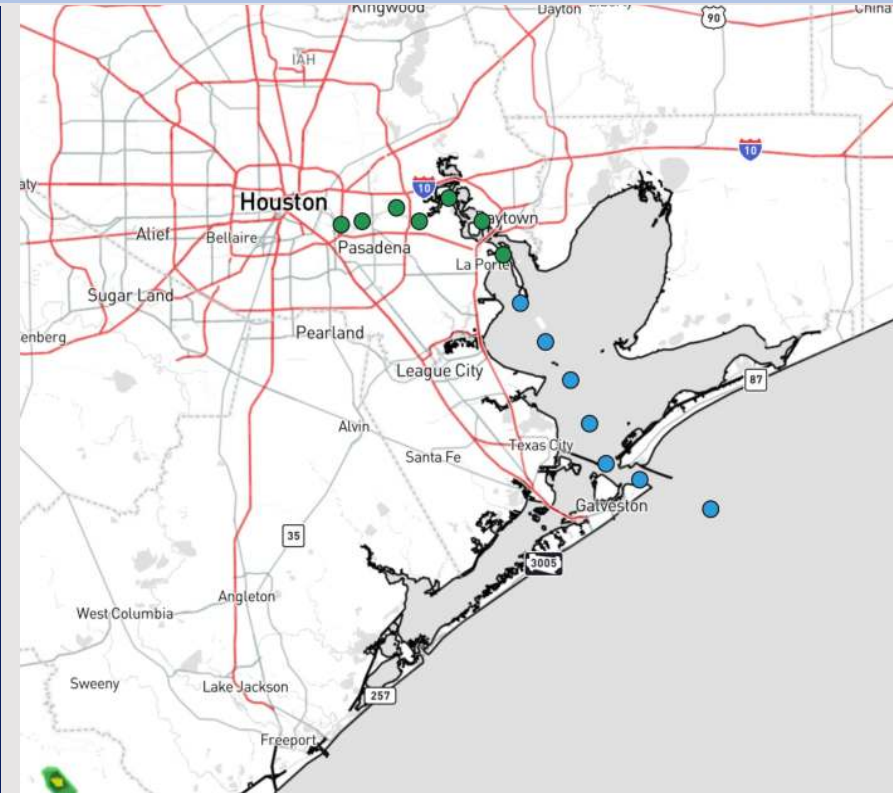


Updated: 11:00 PM CT  
Sunday, June 16, 2024

Forecaster: Tyler Riggles

## Weather Headlines

- Stronger wind gusts will work into the area MON PM and continue through the early/mid parts of the week
- **An X-Ray port condition is in effect: see slide for timing and anticipated wave heights.**
- Scattered to widespread showers/storms will also move into the area beginning MON.
- **Check custom graphic below on current thinking for multi day heavy rain event.**



Current Radar: 11:00 PM CT



As always, please do not hesitate to reach out to us with any forecast questions via the chat option on Clarity or our on-call number, **(317)-560-8122** press **1** for forecast questions.

# Houston Pilots Wave Height Update



Port Condition	34 KTS+ Sustained Winds	6 Foot Waves	Time Remaining/Trigger End
Victor	N/A	N/A	N/A
Whiskey	N/A	N/A	N/A
X-Ray	<b>NO</b>	<b>IN EFFECT</b>	<b>7 AM CT MON</b>
Yankee	<b>NO</b>	<b>7 AM CT MON</b>	<b>7 PM CT MON</b>
Zulu	<b>NO</b>	<b>7 PM CT MON</b>	<b>7 AM CT TUE</b>

Port Condition	Trigger Definition	Trigger Reached?
Victor	Hurricane entering/developing in Gulf of Mexico that's a threat to the area	No
Whiskey	72 hours prior to predicted sustained winds of 34+ KTS	No
X-Ray	48 hours prior to predicted sustained winds of 34+ KTS or <b>6' wave height</b>	<b>YES</b>
Yankee	24 hours prior to predicted sustained winds of 34+ KTS or <b>6' wave height</b>	No
Zulu	12 hours prior to predicted sustained winds of 34+ KTS or <b>6' wave height</b>	No

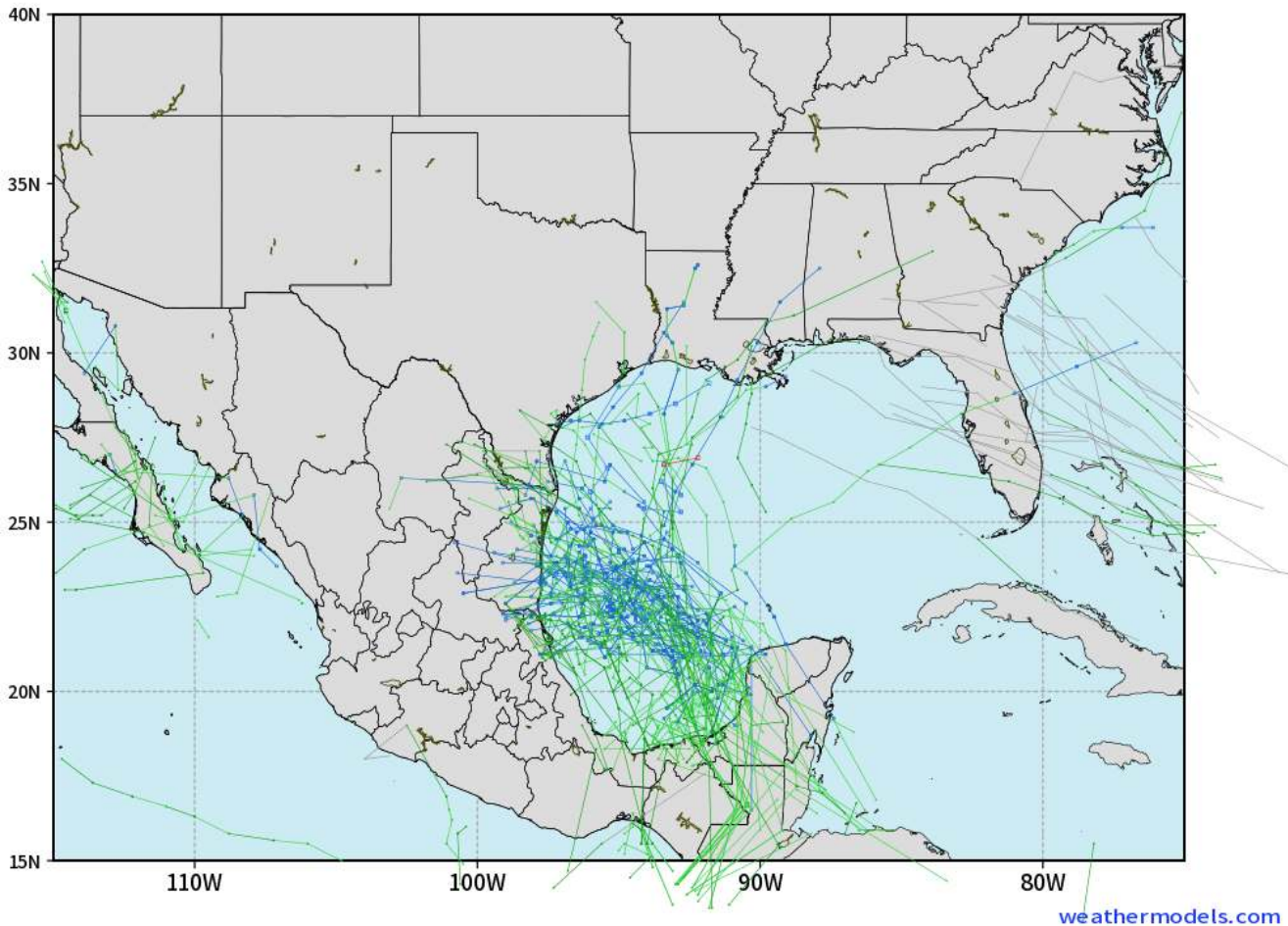
**Wave heights ~6 ft towards Station 11/12 and the Boarding Station are anticipated to start at 7 AM CT TUE through 12 AM CT FRI. **More details on progression on following slide.****

# Houston Pilots Tropical Update

## European Model Next 10 Days - Tropical Tracks

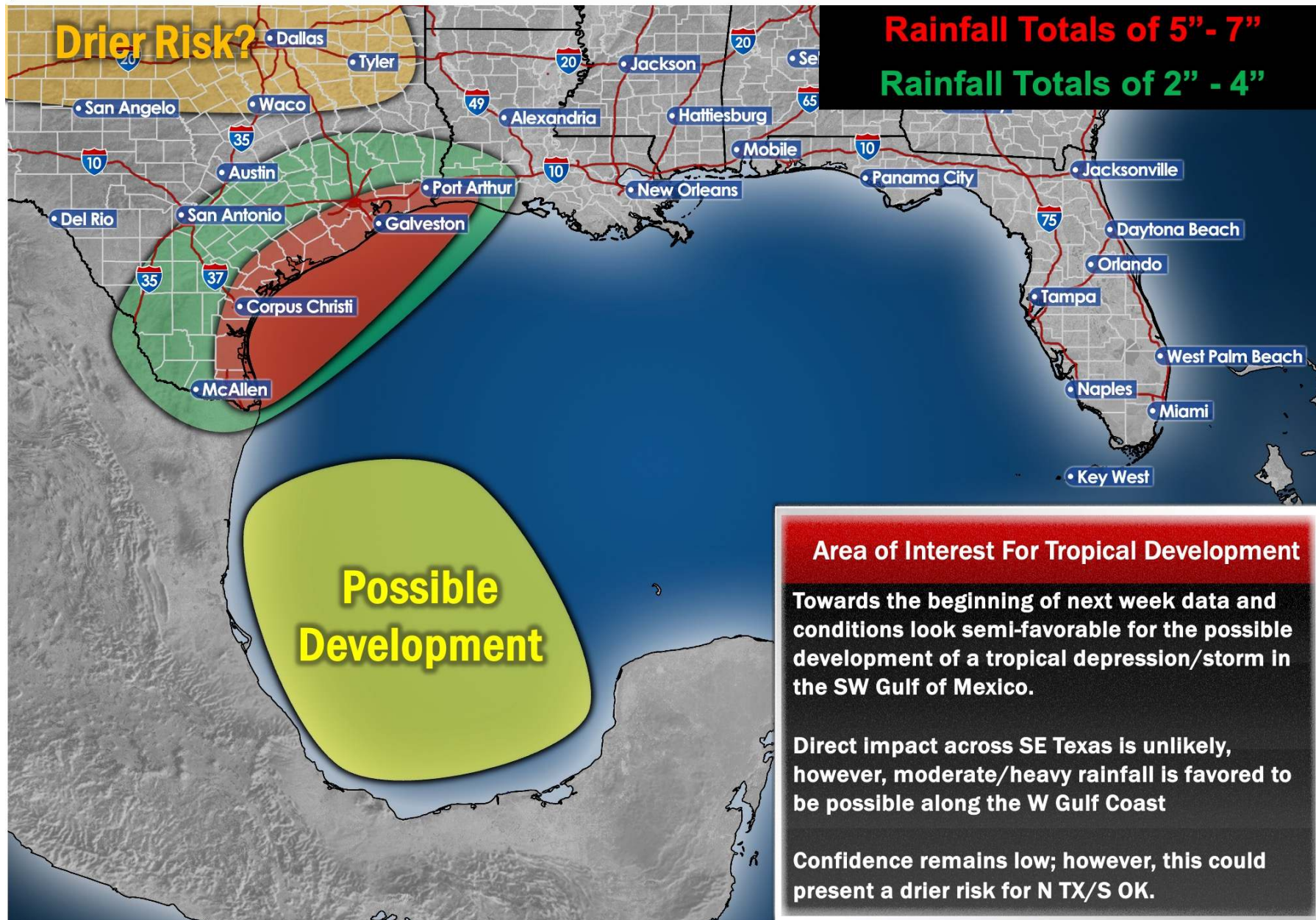
ECMWF GULF EPS Cyclone Locations --> Next [10-days]  
INIT: 12Z16JUN2024 --> UNTIL 12Z26JUN2024

o-o ENSEMBLE MEAN  
o-o 1000 - 1010 hPa  
o-o 980 - 999 hPa  
o-o 960 - 979 hPa  
o-o 950 - 959 hPa  
o-o < 950 hPa



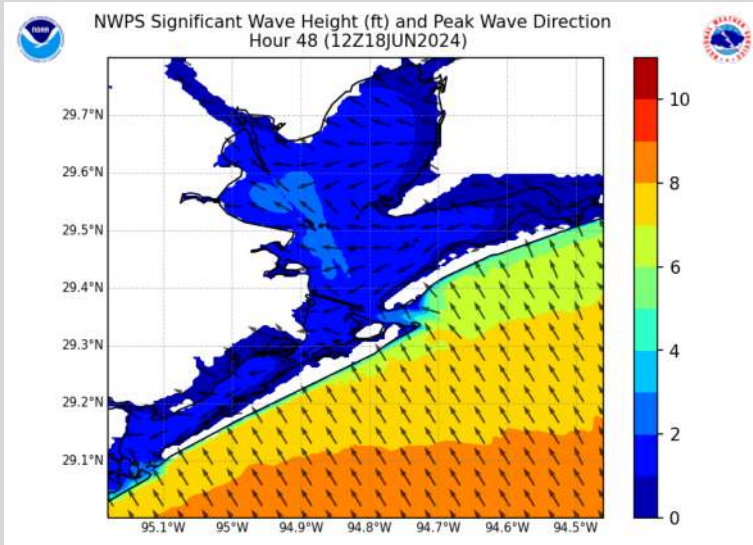
Monitoring a tropical disturbance with the potential to become a Tropical Depression in the SW Gulf of Mexico between 6/18 - 6/21

As of MON AM, direct impact with Houston is not favored. Periods of moderate/heavy rain and higher seas will be possible during that timeframe.



# Houston Pilots Wave Height Update

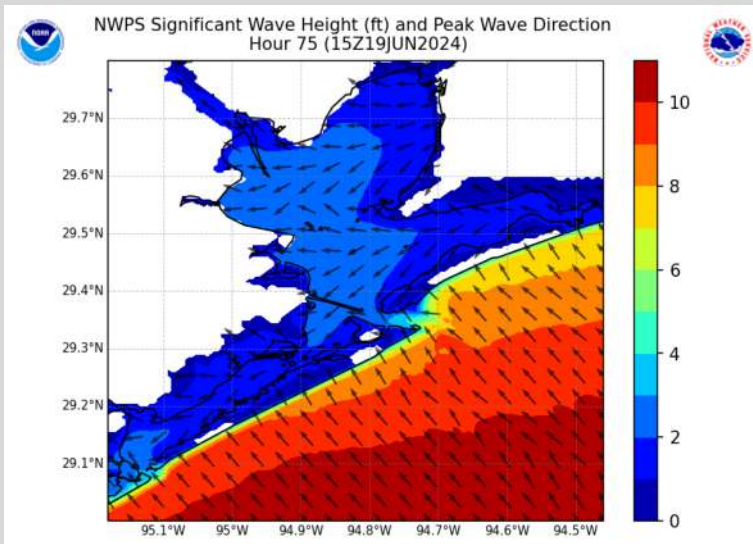
## Significant Wave Height Image



**6 AM CT TUE**  
(START TIME)

6 ft waves anticipated start time around 7 AM TUE.

The highest waves are favored to arrive around 4 AM WED and continue through 7 PM WED. Over this time frame, favored wave heights are ~6 – 8 ft. An occasional 9 ft wave around the Boarding Station cannot be ruled out.



**9 AM CT WED**  
(PEAK HEIGHTS)

Wave heights very slowly recede across THU. Heights are currently anticipated to drop below 6 ft threshold between 8 PM THU – 2 AM FRI.

# Houston Pilots Visibility Chart (miles)



## Forecast Confidence



Time	Sun 10pm	Sun 11pm	Mon 12am	Mon 1am	Mon 2am	Mon 3am	Mon 4am	Mon 5am	Mon 6am	Mon 7am	Mon 8am	Mon 9am	Mon 10am	Mon 11am	Mon 12pm	Mon 1pm	Mon 2pm	Mon 3pm	Mon 4pm	Mon 5pm	Mon 6pm	Mon 7pm	Mon 8pm	Mon 9pm
610 Bridge	10	10	10	10	10	10	10	10	10	10	10	10	9	6	7	9	9	10	10	10	10	10	10	10
Kinder 1	10	10	10	10	10	10	10	10	10	10	10	10	6	6	7	7	9	10	10	10	10	10	10	10
Greens Bayou	10	10	10	10	10	10	10	10	10	10	10	10	6	6	7	7	9	10	10	10	10	10	10	10
Shell Crude	10	10	10	10	10	10	10	10	10	10	10	10	9	6	7	7	9	10	10	10	10	10	10	10
Lynchburg Ferries	10	10	10	10	10	10	10	10	10	10	10	10	6	9	10	10	10	10	10	10	10	10	10	10
Exxon 3	10	10	10	10	10	10	10	10	10	10	10	10	10	10	10	10	10	10	10	10	10	10	10	10
Morgans Point	10	10	10	10	10	10	10	10	10	10	10	10	10	10	10	10	10	10	10	10	10	10	10	10
75/76	10	10	10	10	10	10	10	10	10	10	10	10	10	10	10	10	10	10	10	10	10	10	10	10
63/64	10	10	10	10	10	10	10	10	10	10	10	10	10	10	10	10	10	10	10	10	10	10	10	10
51/52	10	10	10	10	10	10	10	10	10	10	10	10	10	10	10	10	10	10	10	10	10	10	10	10
37/38	10	10	10	10	10	10	10	10	10	10	10	10	10	10	10	10	10	10	10	10	10	10	10	10
25/26	10	10	10	10	10	10	10	10	10	10	10	10	10	10	10	10	10	10	10	10	10	10	10	10
11/12	10	10	10	10	10	10	10	10	10	10	10	10	10	10	10	10	10	10	10	10	10	10	10	9
1 & 2 Bravo	10	10	10	10	10	10	10	10	10	10	10	10	10	10	10	10	10	10	7	7	7	7	10	9

**NOTE: This is automated data that may/may not agree with the official BAM thinking that's found on the daily slides or special visibility report slides. This data should be used as a guide only**

# Houston Pilots Wind Chart



## Forecast Confidence



Sustained wind 13 Knots  
Gusts 18 Knots  
Wind from the N

## Example

WS: 13  
G:18  
N

Time Knots	Sun 10pm	Sun 11pm	Mon 12am	Mon 1am	Mon 2am	Mon 3am	Mon 4am	Mon 5am	Mon 6am	Mon 7am	Mon 8am	Mon 9am	Mon 10am	Mon 11am	Mon 12pm	Mon 1pm	Mon 2pm	Mon 3pm	Mon 4pm	Mon 5pm	Mon 6pm	Mon 7pm	Mon 8pm	Mon 9pm
610 Bridge	8	7	7	7	6	6	5	5	5	5	7	7	9	9	10	10	11	12	12	12	12	11	11	10
	16	15	14	14	13	13	13	11	11	11	13	14	17	18	19	20	22	22	23	23	22	21	21	21
	SE	SE	SE	SE	SSE	SSE	SE	SE	SE	SE	SSE	SE	SSE	SE	SE	SE	SE	SE	SE	SE	SE	SE	ESE	ESE
Kinder 1	7	7	7	7	6	6	5	5	5	5	7	7	9	9	10	10	11	11	12	12	11	11	10	10
	16	15	14	14	13	13	13	11	11	11	13	14	17	18	19	20	22	22	23	23	22	21	21	21
	SE	SE	SE	SE	SSE	SE	SE	SE	SE	SE	SSE	SE	SSE	SE	SE	SE	SE	SE	SE	SE	SE	SE	ESE	ESE
Greens Bayou	7	7	7	7	6	6	6	5	5	5	7	7	9	9	10	10	11	11	12	12	11	11	10	10
	15	15	14	14	13	13	13	12	11	12	13	14	17	18	19	20	21	21	22	22	21	21	21	21
	SE	SE	SSE	SSE	SSE	SSE	SSE	SE	SE	S	SSE	SE	ESE	SSE	SE	SE	ESE	SE	SE	SE	SE	SE	ESE	ESE
Shell Crude	8	7	7	7	7	6	6	5	5	5	7	7	9	9	10	10	11	11	12	12	11	11	11	10
	16	15	15	14	13	13	13	12	12	12	13	15	17	18	19	20	20	21	22	22	21	21	21	21
	SE	SE	SSE	SSE	SSE	SSE	SSE	SE	SE	S	SSE	SE	SE	SSE	SE	SE	SE	SE	SE	SE	SE	SE	ESE	ESE
Lynchburg Ferries	7	7	7	7	6	6	6	5	5	5	6	7	9	9	10	11	11	12	12	12	12	11	11	10
	15	15	15	14	13	13	13	12	11	12	13	14	17	18	19	19	20	21	22	22	21	21	21	21
	SE	SE	SSE	SSE	SSE	SSE	SSE	SE	S	SSE	SE	SSE	SE	SE	SE	ESE	SE	SE	SE	SE	SE	SE	ESE	ESE
Exxon 3	12	12	12	12	11	11	11	10	10	9	10	11	11	12	13	13	14	14	14	15	15	15	15	15
	18	18	17	17	16	15	15	15	14	14	15	16	17	18	19	20	21	21	22	23	22	21	22	22
	SE	SE	SSE	SSE	SSE	SSE	SSE	SSE	SSE	SSE	SSE	SE	SSE	SE	SE	SE	SE	SE	SE	SE	SE	SE	ESE	ESE
Morgans Point	13	13	13	12	12	11	11	11	10	10	11	11	11	12	13	13	14	14	14	15	15	15	15	16
	18	18	18	17	17	16	16	15	15	15	15	16	17	18	19	20	21	21	22	23	22	21	22	22
	SE	SE	SSE	SSE	SSE	SSE	SSE	SSE	SSE	S	SSE	SE	SE	SE	SE	SE	SE	SE	SE	SE	SE	SE	ESE	ESE
75/76	14	14	14	14	13	13	13	12	12	11	12	12	13	13	13	14	14	15	15	16	16	16	17	17
	20	20	19	19	19	18	18	18	17	17	17	18	18	20	20	21	22	23	23	24	24	23	24	24
	SE	SE	SSE	SSE	SSE	SSE	SSE	SSE	SSE	SSE	SSE	SE	SE	SE	SE	SE	SE	SE	SE	SE	SE	SE	ESE	ESE
63/64	14	14	14	14	13	13	13	13	12	12	12	13	13	13	13	14	14	15	16	16	16	17	17	17
	20	20	19	20	19	18	18	18	17	17	18	19	19	20	20	21	22	23	23	24	24	24	24	25
	SE	SE	SSE	SSE	SSE	SSE	SSE	SSE	SSE	SSE	SSE	SE	SE	SE	SE	SE	SE	SE	SE	ESE	SE	SE	ESE	ESE
51/52	14	14	15	14	14	14	13	13	13	12	13	13	13	13	14	14	15	16	16	16	17	17	17	19
	20	20	19	20	20	19	19	19	18	17	18	19	19	20	20	21	22	23	23	24	24	23	25	25
	SE	SE	SSE	SSE	SSE	SSE	SSE	SSE	SSE	SSE	SSE	SE	SE	SE	SE	SE	SE	SE	SE	ESE	SE	ESE	ESE	ESE
37/38	14	14	14	14	14	14	13	13	13	12	13	13	13	13	14	14	15	16	16	16	17	17	17	18
	20	20	19	20	20	19	19	19	18	17	18	19	19	20	20	21	22	23	23	25	24	24	25	25
	SE	SE	SSE	SSE	SSE	SSE	SSE	SSE	SSE	SSE	SSE	SE	SE	SE	SE	SE	SE	SE	ESE	SE	ESE	ESE	ESE	ESE
25/26	13	13	14	13	13	13	13	13	13	12	13	13	13	13	14	14	15	16	16	16	16	16	17	17
	20	20	19	20	19	19	19	19	18	17	18	19	19	20	20	21	22	23	23	24	24	23	25	25
	SE	SE	SSE	SSE	SSE	SSE	SSE	SSE	SSE	SSE	SSE	SE	SE	SE	SE	SE	SE	SE	SE	ESE	SE	ESE	ESE	ESE
11/12	12	13	13	12	12	12	12	12	11	11	11	12	13	13	13	14	15	15	16	16	16	15	16	16
	19	19	19	19	19	18	18	18	18	17	18	18	18	20	20	20	22	22	23	24	23	23	24	24
	SE	SE	SSE	SSE	SSE	SSE	SSE	SSE	SSE	SSE	SSE	SE	SE	SE	SE	SE	SE	SE	SE	ESE	ESE	ESE	ESE	ESE
1 & 2 Bravo	15	15	15	15	15	15	14	14	14	13	13	14	14	15	15	15	16	16	17	18	18	18	19	19
	21	21	20	21	21	20	20	19	19	18	19	19	20	21	21	22	23	24	24	25	25	25	25	26
	SE	SE	SE	SSE	SSE	SSE	SSE	SSE	SSE	SSE	SE	SSE	SSE	SE	SE	SE	SE	ESE	ESE	ESE	ESE	ESE	ESE	ESE

NOTE: This is automated data that may/may not agree with the official BAM thinking that's found on the daily slides. This data should be used as a guide only.

# Houston Pilots: Mon. 6/17/2024



## Forecast Discussion

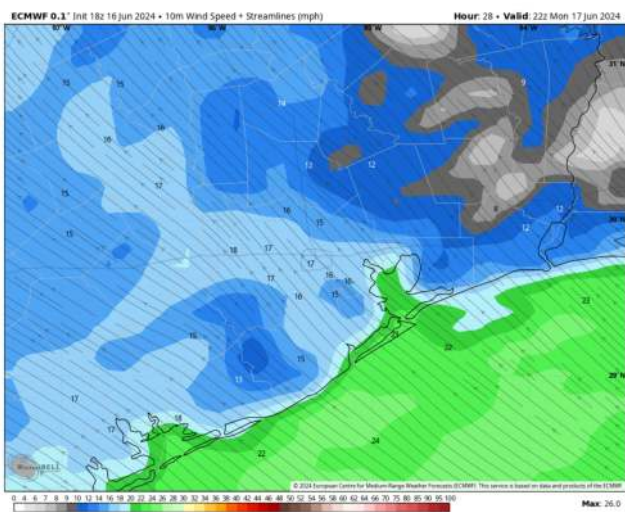
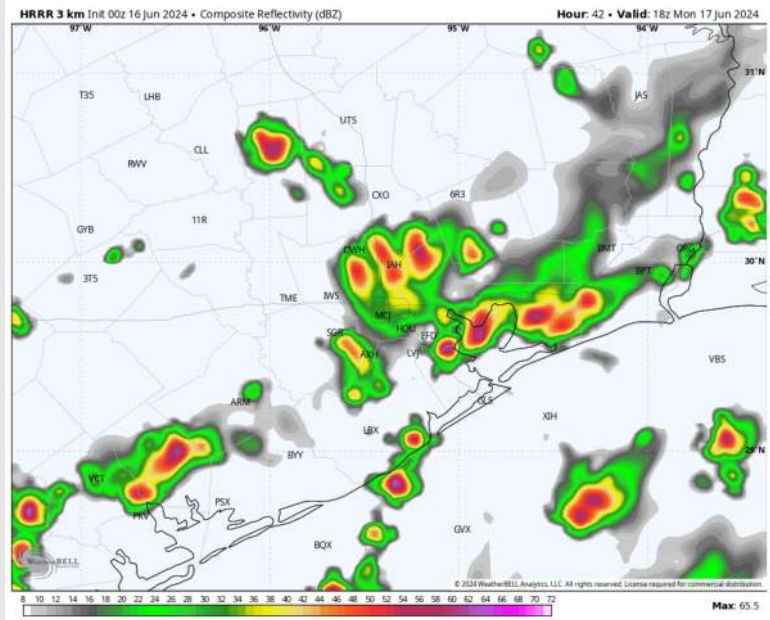
**Precip:** Rain showers and storms from the overnight hours will continue into MON. Chances in coverage will be increasing from 20% coverage to ~40%. Scattered storms will continue through the rest of the day, before moving out of the area by 10 PM.

**Wind:** Winds will remain out of the SE today. **N of Morgan's Point:** Winds will be at 4-9 kts through 4 PM before increasing to 7-12 kts afterwards. **S of Morgan's Point:** Winds at 13-18 kts through 5 PM before increasing to 16-21 kts for the rest of the evening. **A few gusts of 25-30kts can't be ruled out for stations S of Morgan's Point after 11 AM.**

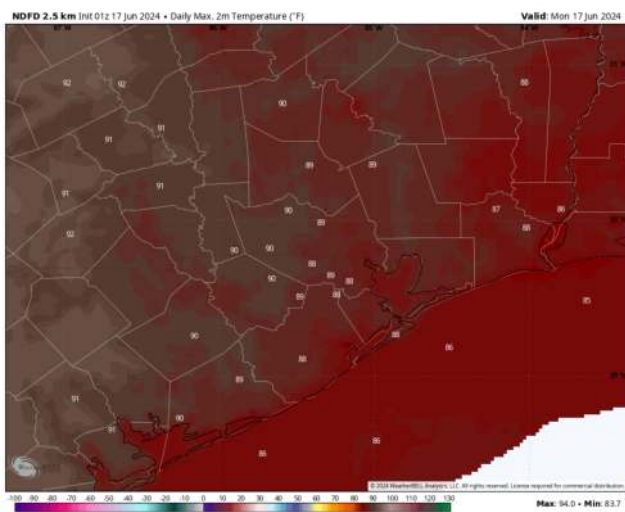
**High Temps:** **N of Morgan's Point:** Mid to upper 80s F. **S of Morgan's Point:** Mid 80s F.

**Visibility:** Not anticipating any fog concerns for today, however reduced visibilities possible under heavier downpours.

## Precip Image: 3 PM CT



Wind Speed:  
6 PM CT



High Temps  
Today



# Houston Pilots: Tue. 6/18/2024



## Forecast Discussion

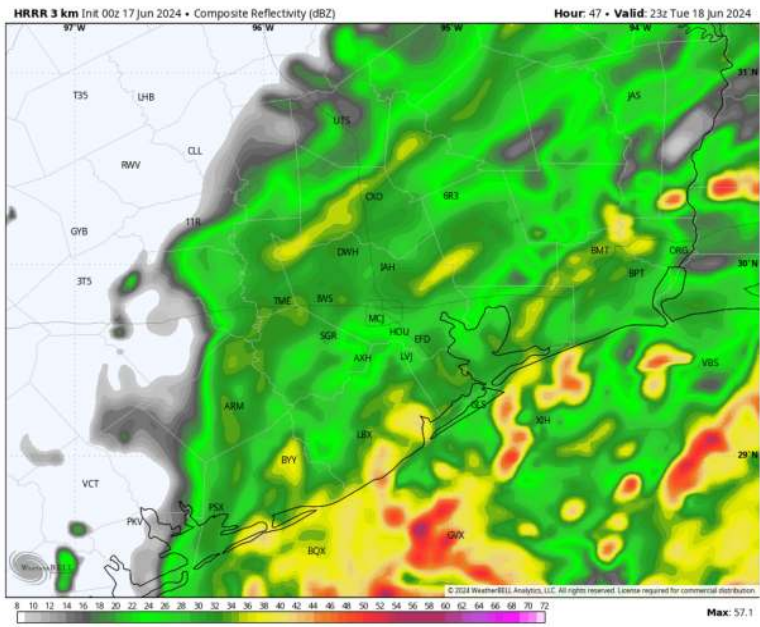
**Precip:** Favoring dry conditions through 10 AM TUE before scattered to widespread showers/thunderstorms work into the area. These chances will continue into the PM hours. **Main risks with thunderstorms will be lightning, hail and strong wind gusts (details below).**

**Wind:** Winds will be out of the southeast through 10 AM before shifting to out of the east. **N of Morgan's Point:** Winds at 8-13 kts through 10 AM before increasing to 12-17 kts. **Thunderstorm-related wind gusts of 24-29 kts will be possible after 10 AM.** **S of Morgan's Point:** Winds at 18-23 kts through 10 AM before increasing to 26-31 kts for the remainder of the day. **Thunderstorm-related wind gusts of 35-40 kts will be possible after 10 AM.**

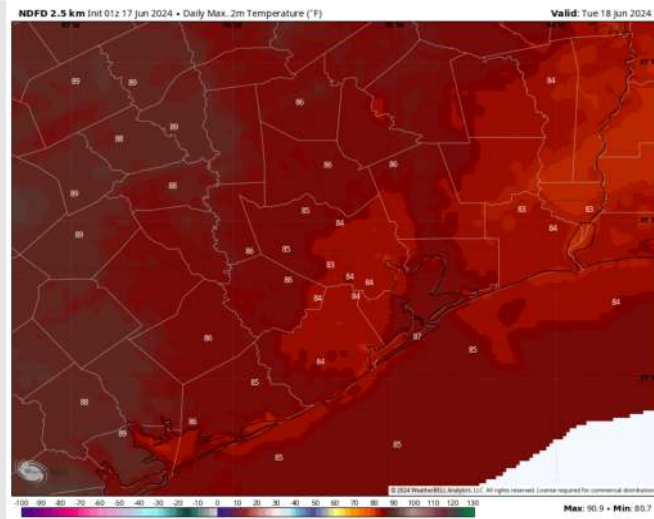
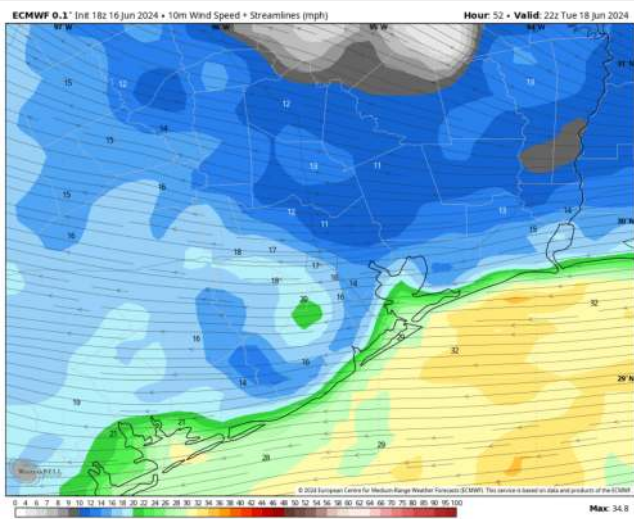
**High Temps:** **N of Morgan's Point:** Mid 80s F **S of Morgan's Point:** Mid 80s F.

**Visibility:** Not anticipating any fog concerns for Tuesday, however reduced visibilities possible under heavier downpours.

## Precip Image: 5 PM CT



Wind Speed:  
5 PM CT



High Temps  
Tuesday

## Forecast Discussion

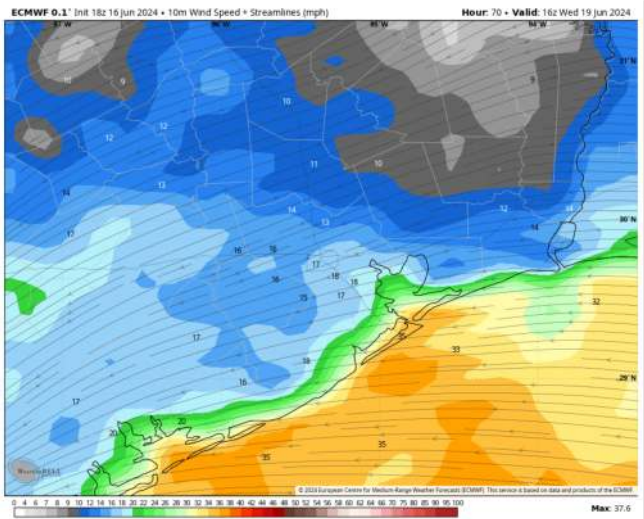
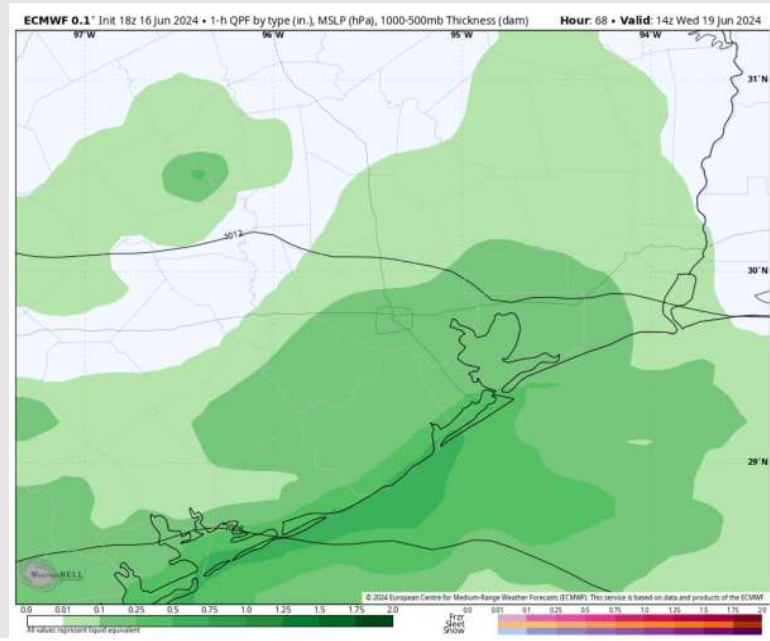
**Precip:** Widespread showers/thunderstorms continue into WED and will linger throughout the day. **Main risks with thunderstorms will be lightning, hail and strong wind gusts (details below).**

**Wind:** Winds will be out of the E/ESE throughout the day WED. **N of Morgan's Point:** Favoring winds at 12-17 kts throughout Wednesday. **Thunderstorm-related wind gusts of 24-29 kts in play throughout the day.** **S of Morgan's Point:** Favoring winds at 26-31 kts throughout the entire day. **Thunderstorm-related wind gusts of 35-40 kts in play throughout the day**

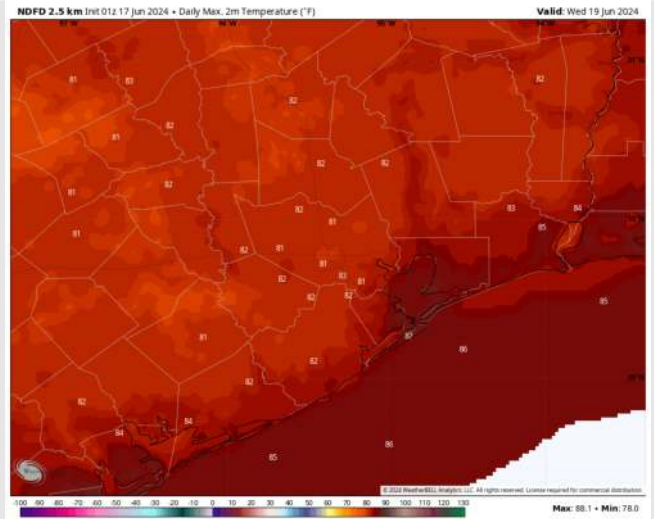
**High Temps:** **N of Morgan's Point:** Low 80's F. **S of Morgan's Point:** Mid 80s F.

**Visibility:** Not favoring any visibility concerns for Wednesday, however reduced visibilities possible under heavier downpours.

## Precip Image: 9 AM CT



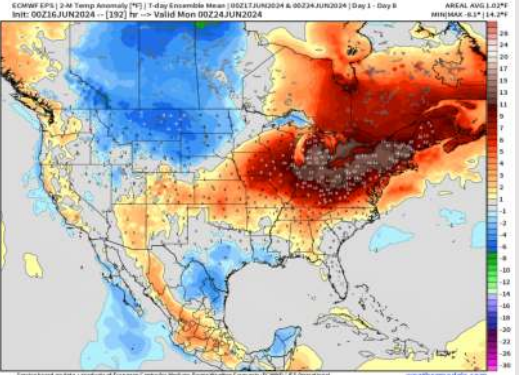
Wind Speed  
11 AM CT



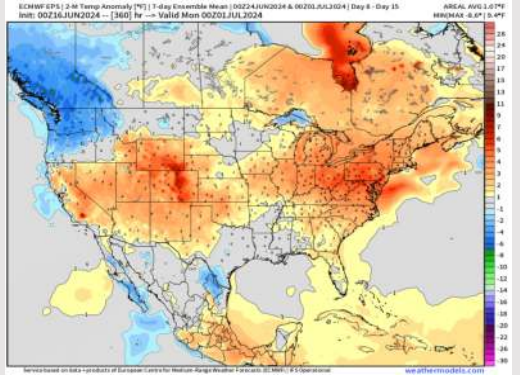
High Temps  
Wednesday

# Houston Pilots: 6/17/24

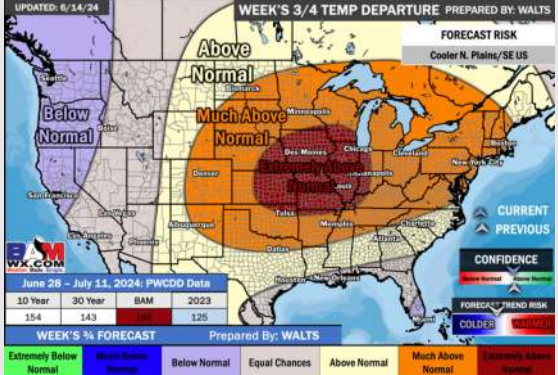
**Next 7 Day Temperature Departure**



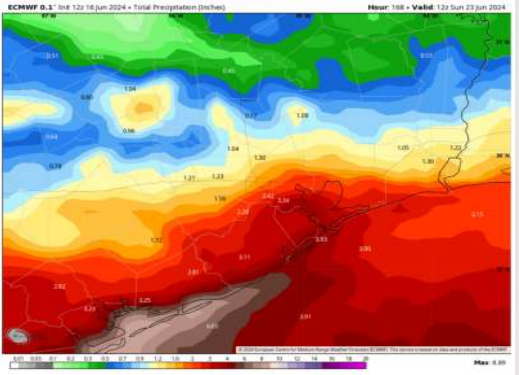
**8-14 Day Temperature Departure**



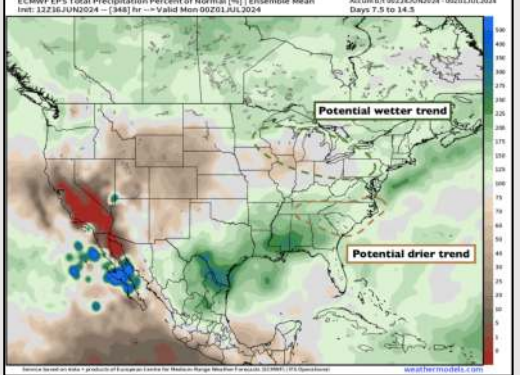
**15-30 Day Temperature Departure**



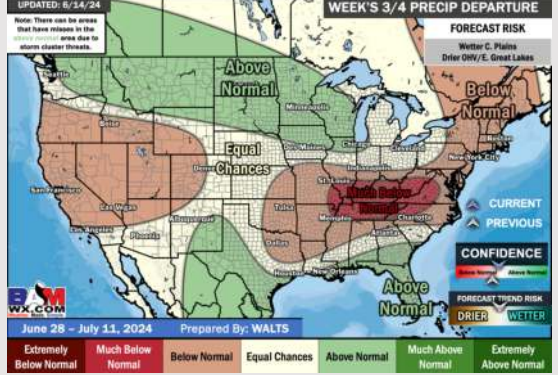
**Next 7 Day Total Precipitation**



**8-14 Day % of Average Precip.**



**15-30 Day % of Average Precip.**



- Temps are expected to be near normal for the week 1 timeframe. Monitoring risk for moderate/heavy rain beginning TUE associated with a tropical system. **(Check custom graphic for more information)**
- Slightly above normal precipitation chances are at play during the week 2 timeframe. Temps are expected to be near normal for week 2.
- Above normal chances for precipitation and near normal temperatures are favored in the weeks 3/4 timeframe.