

# Houston Pilots Forecast Package



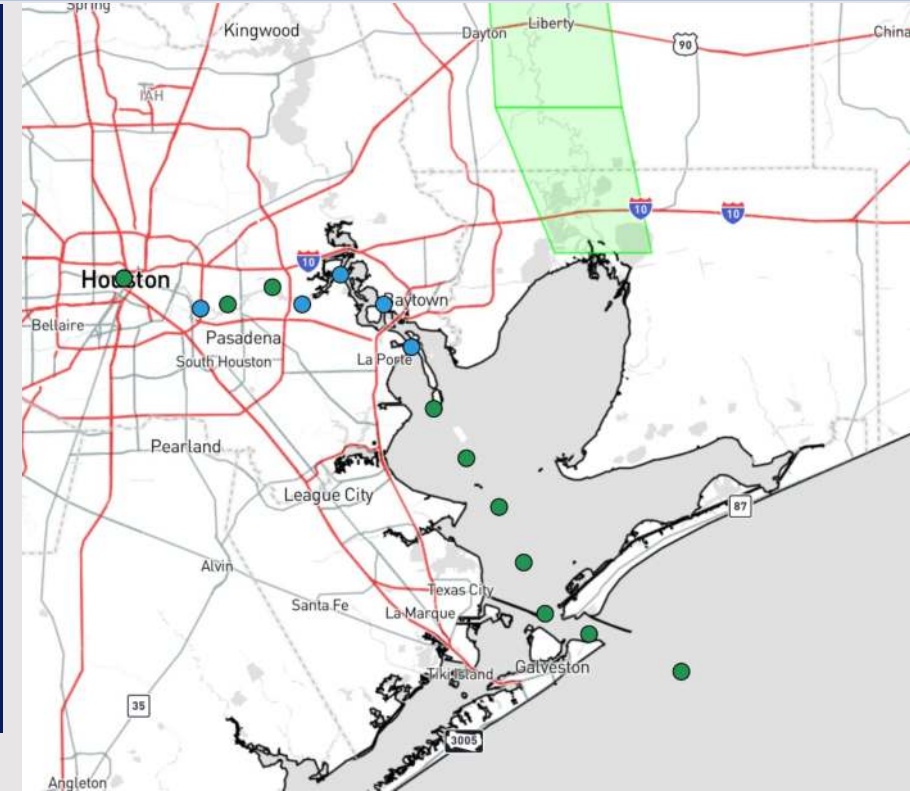
Updated: 12:00 PM CT

Saturday, June 15, 2024

Forecaster: Adam Feick

## Weather Headlines

- An increase in gusty windy potential beginning Monday
- Storm activity returns late Sunday into Early next week
- **Check custom graphic below on current thinking for multi day heavy rain event.**



**Current Radar: 12:00 PM CT**



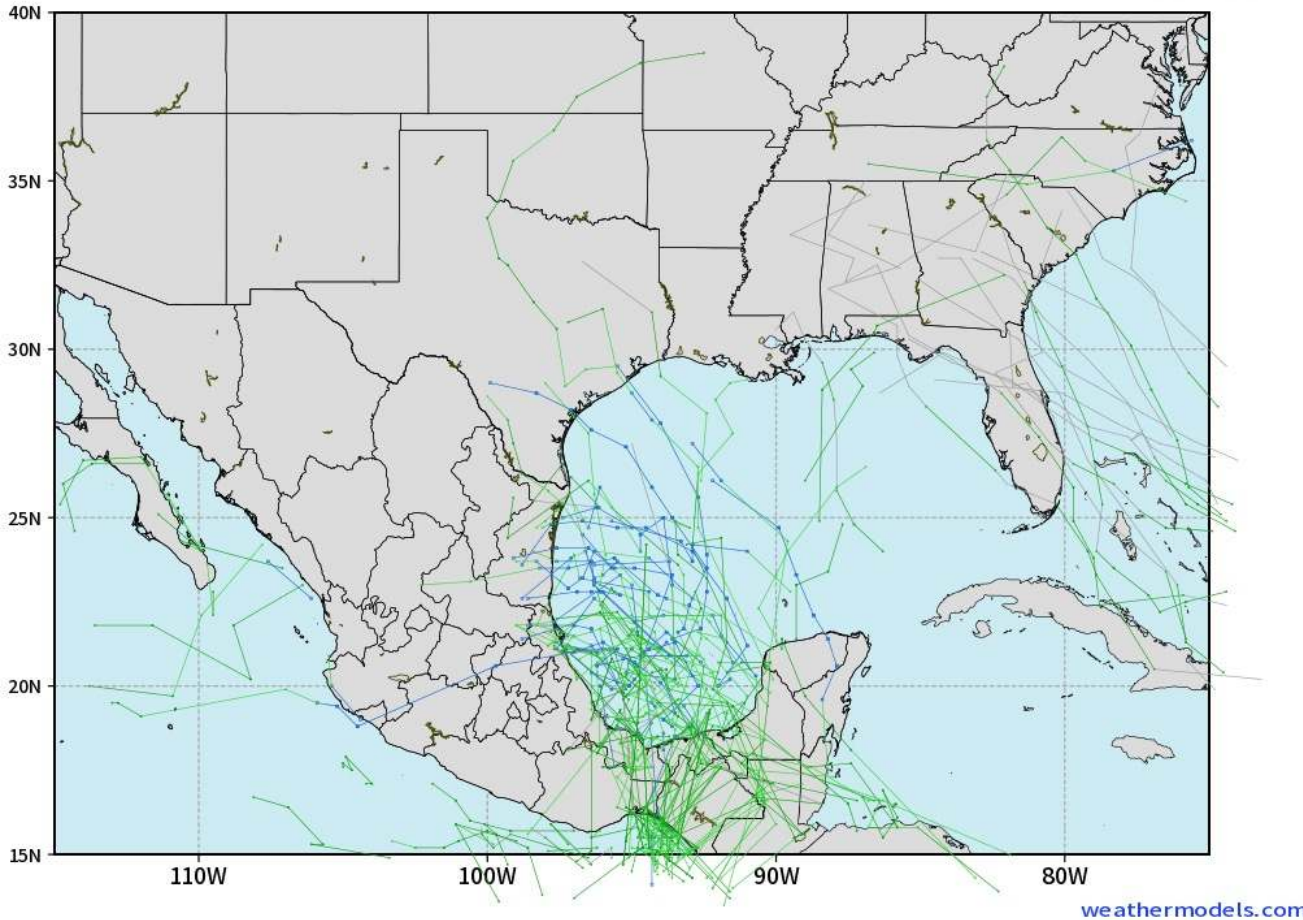
As always, please do not hesitate to reach out to us with any forecast questions via the chat option on Clarity or our on-call number, **(317)-560-8122** press **1** for forecast questions.

# Houston Pilots Tropical Update

## European Model Next 10 Days - Tropical Tracks

ECMWF GULF EPS Cyclone Locations --> Next [10-days]  
INIT: 00Z15JUN2024 --> UNTIL 00Z25JUN2024

o-o ENSEMBLE MEAN  
o-o 1000 - 1010 hPa  
o-o 980 - 999 hPa  
o-o 960 - 979 hPa  
o-o 950 - 959 hPa  
o-o < 950 hPa

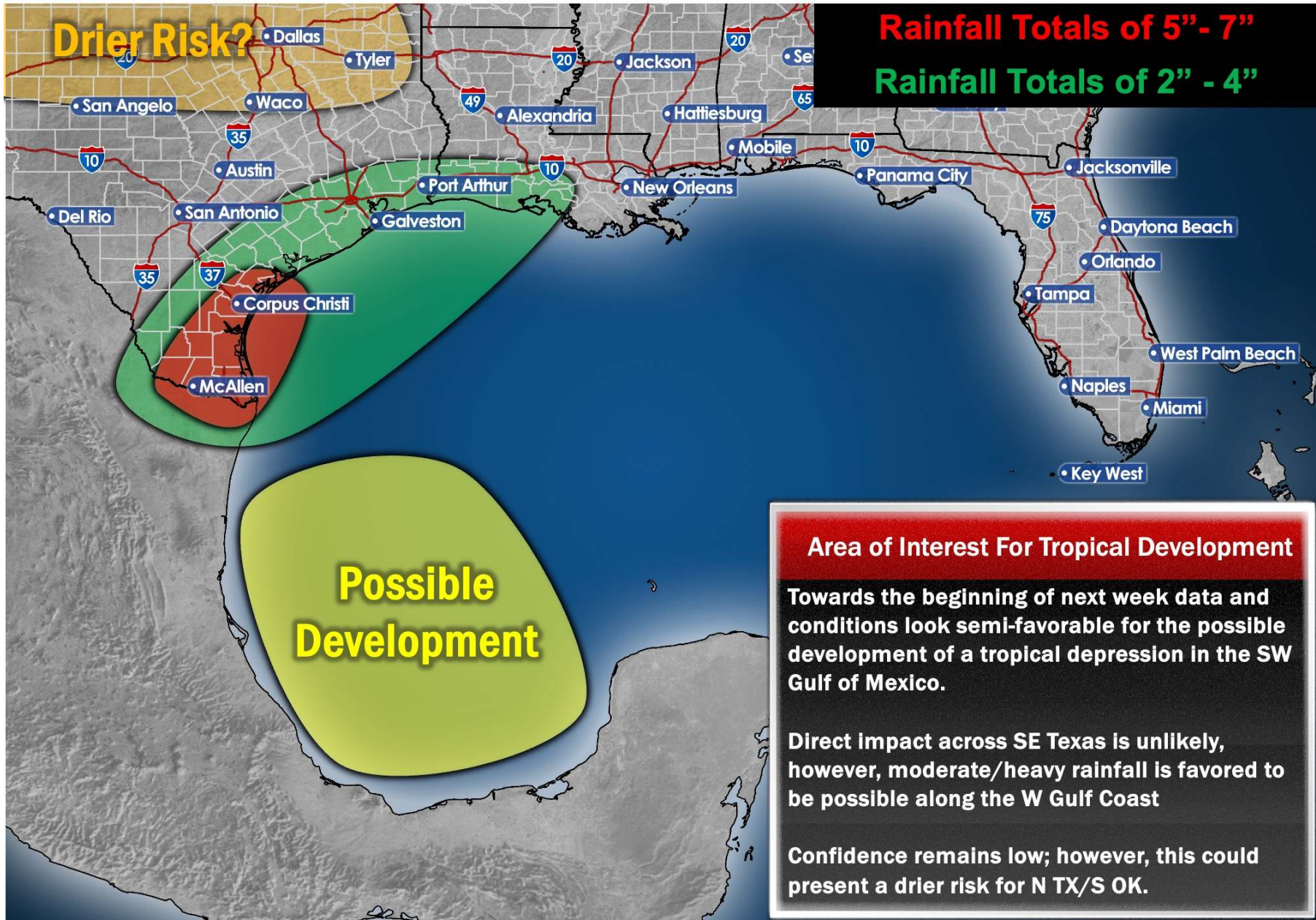


weathermodels.com

Industry Energy according to our TOS (ff580f5Z007w592)

Monitoring a tropical disturbance with the potential to become a Tropical Depression in the SW Gulf of Mexico between 6/17 - 6/20

As of SAT PM, direct impact with Houston is not favored. Periods of moderate/heavy rain and higher seas will be possible during that timeframe.



# Houston Pilots Visibility Chart (miles)



Time	Sat 12pm	Sat 1pm	Sat 2pm	Sat 3pm	Sat 4pm	Sat 5pm	Sat 6pm	Sat 7pm	Sat 8pm	Sat 9pm	Sat 10pm	Sat 11pm	Sun 12am	Sun 1am	Sun 2am	Sun 3am	Sun 4am	Sun 5am	Sun 6am	Sun 7am	Sun 8am	Sun 9am	Sun 10am	Sun 11am
610 Bridge	10	10	10	10	10	10	10	10	10	10	10	10	10	10	10	10	10	10	10	10	10	10	10	10
Kinder 1	10	10	10	10	10	10	10	10	10	10	10	10	10	10	10	10	10	10	10	10	10	10	10	10
Greens Bayou	10	10	10	10	10	10	10	10	10	10	10	10	10	10	10	10	10	10	10	10	10	10	10	10
Shell Crude	10	10	10	10	10	10	10	10	10	10	10	10	10	10	10	10	10	10	10	10	10	10	10	10
Lynchburg Ferries	10	10	10	10	10	10	10	10	10	10	10	10	10	10	10	10	10	10	10	10	10	10	10	10
Exxon 3	10	10	10	10	10	10	10	10	10	10	10	10	10	10	10	10	10	10	10	10	10	10	10	10
Morgans Point	10	10	10	10	10	10	10	10	10	10	10	10	10	10	10	10	10	10	10	10	10	10	10	10
75/76	10	10	10	10	10	10	10	10	10	10	10	10	10	10	10	10	10	10	10	10	10	10	10	10
63/64	10	10	10	10	10	10	10	10	10	10	10	10	10	10	10	10	10	10	10	10	10	10	10	10
51/52	10	10	10	10	10	10	10	10	10	10	10	10	10	10	10	10	10	10	10	10	10	10	10	10
37/38	10	10	10	10	10	10	10	10	10	10	10	10	10	10	10	10	10	10	10	10	10	10	10	10
25/26	10	10	10	10	10	10	10	10	10	10	10	10	10	10	10	10	10	10	10	10	10	10	10	10
11/12	10	10	10	10	10	10	10	10	10	10	10	10	10	10	10	10	10	10	10	10	10	10	10	10
1 & 2 Bravo	10	10	10	10	10	10	10	10	10	10	10	10	10	10	10	10	10	10	10	10	10	10	10	10

**NOTE: This is automated data that may/may not agree with the official BAM thinking that's found on the daily slides or special visibility report slides. This data should be used as a guide only**

# Houston Pilots Wind Chart



## Forecast Confidence



Sustained wind 13 Knots  
Gusts 18 Knots  
Wind from the N

## Example

WS: 13  
G:18  
N

Time Knots	Sat 12pm	Sat 1pm	Sat 2pm	Sat 3pm	Sat 4pm	Sat 5pm	Sat 6pm	Sat 7pm	Sat 8pm	Sat 9pm	Sat 10pm	Sat 11pm	Sun 12am	Sun 1am	Sun 2am	Sun 3am	Sun 4am	Sun 5am	Sun 6am	Sun 7am	Sun 8am	Sun 9am	Sun 10am	Sun 11am
610 Bridge	5	6	7	7	8	9	9	8	7	6	5	4	3	3	2	2	2	2	2	2	3	4	5	6
	10	13	13	15	15	16	16	15	13	11	10	8	8	7	6	5	5	5	5	5	6	8	10	12
Kinder 1	5	7	7	7	8	9	9	8	7	6	5	4	3	3	2	2	2	2	2	2	3	4	5	6
	10	13	13	15	15	16	16	15	13	11	10	8	8	7	6	5	5	5	5	5	6	8	10	12
Greens Bayou	5	7	7	7	8	8	8	8	7	5	4	3	3	2	2	2	2	2	2	3	4	5	6	
	10	13	13	15	15	15	16	15	13	11	10	8	7	6	5	5	5	5	5	6	8	10	12	
Shell Crude	5	7	7	7	8	8	8	8	7	5	4	3	3	2	2	2	2	2	2	3	4	5	6	
	10	13	13	15	15	15	16	15	13	11	10	8	8	7	6	5	5	5	5	6	8	10	12	
Lynchburg Ferries	5	6	7	7	8	8	8	7	7	5	4	3	3	2	2	2	2	1	2	2	3	3	5	6
	10	13	13	15	15	15	16	14	13	11	10	8	7	6	5	5	5	5	5	6	8	10	12	
Exxon 3	6	7	9	9	10	11	11	11	9	9	7	7	6	5	5	5	4	4	4	4	5	6	7	7
	11	13	14	16	16	16	16	15	14	13	11	10	9	8	7	7	6	6	6	7	8	9	11	13
Morgans Point	6	7	9	9	10	10	11	11	9	9	8	7	7	6	5	5	5	4	4	5	5	6	7	7
	11	13	14	15	15	16	16	15	14	13	11	10	9	8	7	7	6	6	6	7	8	9	11	13
75/76	7	7	9	9	10	11	11	11	10	9	8	8	8	7	7	6	5	5	5	5	6	7	7	8
	12	13	14	16	16	16	17	16	15	14	13	12	11	10	9	8	8	7	8	9	10	12	14	
63/64	7	7	8	9	10	10	11	11	10	9	9	8	8	7	7	6	5	5	5	5	6	7	7	8
	11	13	14	15	15	16	16	15	14	14	13	12	11	11	10	9	9	8	8	8	9	10	12	14
51/52	7	8	8	9	10	10	10	10	9	9	9	9	8	7	7	6	6	5	6	6	7	8	9	
	12	13	14	15	15	16	16	15	14	14	13	13	12	11	10	9	9	8	8	10	11	12	14	
37/38	7	8	8	9	10	10	10	10	10	9	9	9	9	8	7	7	7	6	6	6	7	7	8	9
	12	13	13	15	15	15	16	15	14	14	13	13	12	12	11	10	10	9	9	9	10	11	12	14
25/26	7	8	9	9	9	10	10	10	9	9	9	9	9	8	7	7	7	6	6	6	7	7	8	9
	12	13	13	14	15	15	15	14	14	13	13	12	12	11	10	10	9	9	9	9	10	11	12	14
11/12	7	8	9	9	9	9	9	9	9	9	8	8	7	7	7	6	6	5	5	5	6	7	8	9
	11	13	13	14	15	14	15	14	14	14	13	13	12	12	11	10	10	9	9	9	10	11	12	14
1 & 2 Bravo	7	8	8	9	9	9	10	10	10	10	10	9	9	9	8	8	7	7	7	7	8	9	9	
	11	13	13	13	15	15	15	15	15	15	15	14	14	13	13	12	11	11	10	10	11	12	13	14

NOTE: This is automated data that may/may not agree with the official BAM thinking that's found on the daily slides. This data should be used as a guide only.

# Houston Pilots: Sat Night. 6/15/2024



## Forecast Discussion

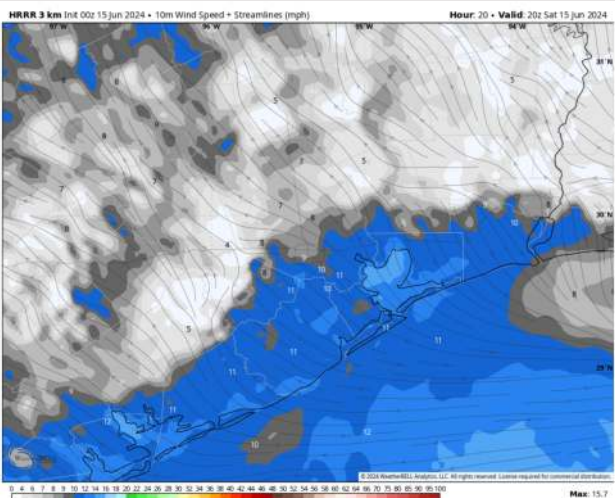
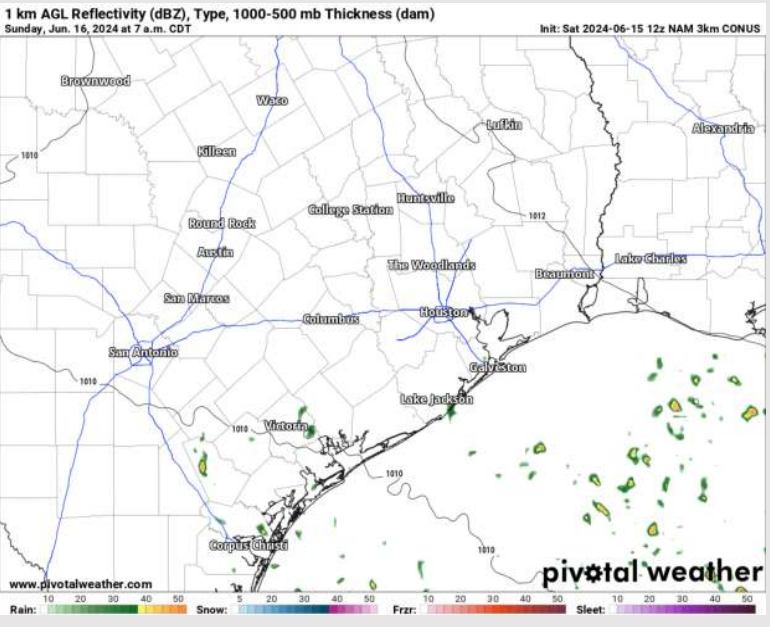
**Precip:** Mainly Dry conditions should be expected overnight tonight into tomorrow morning. Some drizzle or sprinkles will be possible beginning 4am lasting through 10 AM tomorrow

**Wind:** Winds will be out of the southeast for the overnight hours. **N of Morgan's Point:** Winds at 2-9 kts through 7AM. **S of Morgan's Point:** Winds at 7-15 kts through 7AM.

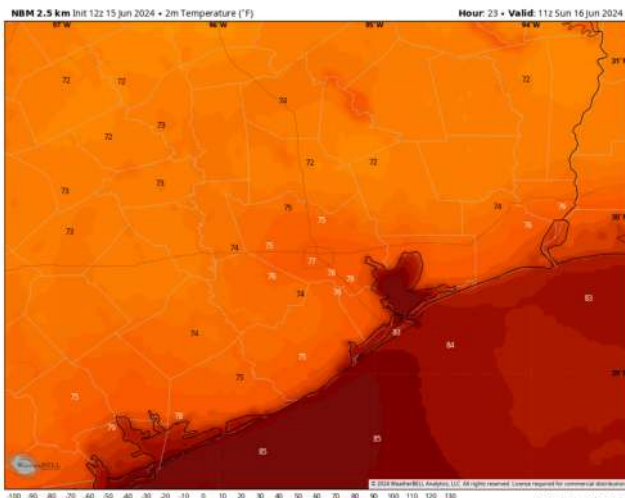
**Low Temps:** **N of Morgan's Point:** Upper 70s F **S of Morgan's Point:** Low 80s F.

**Visibility:** Drizzle could slightly reduce visibility to 5-8 miles, but no major issues are expected

## Precip Image: 4 PM CT



Wind Speed:  
3 PM CT



Low Temps  
Tonight

# Houston Pilots: Sun. 6/16/2024



## Forecast Discussion

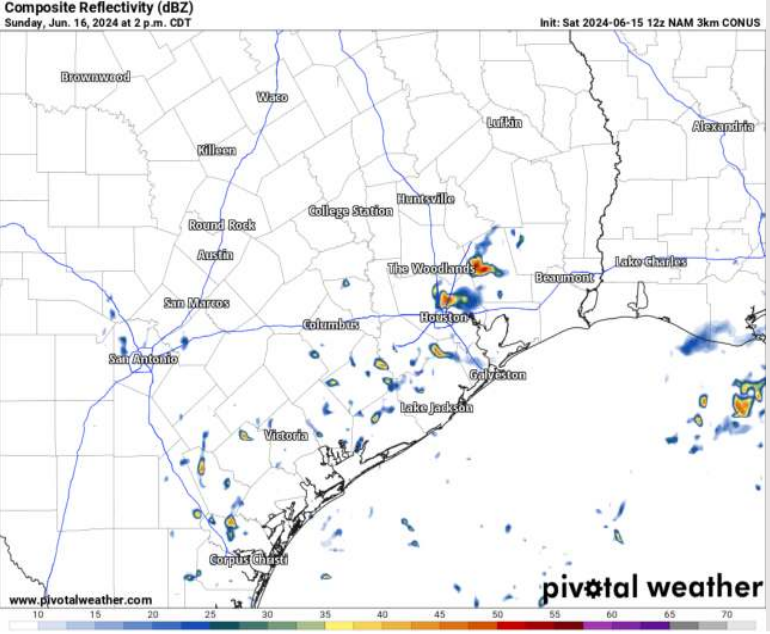
**Precip:** Chance for a few pop-up storms between 12PM – 6PM. Coverage remains spirtic. More dry time should be expected

**Wind:** Winds will be out of the SE throughout the day Sunday. **N of Morgan's Point:** Favoring winds at 6 – 13 throughout the day. **S of Morgan's Point:** Favoring winds 10 – 18 kts throughout the day.

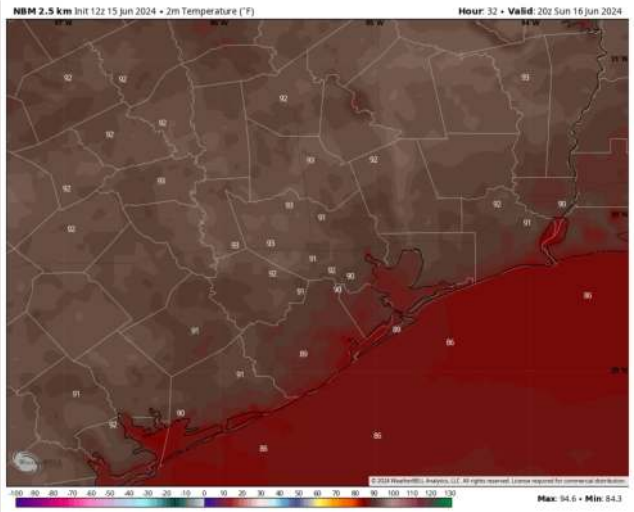
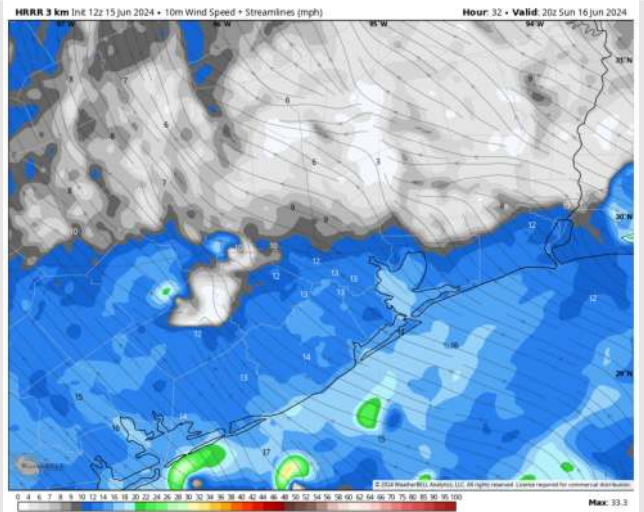
**High Temps:** **N of Morgan's Point:** Low 90's F. **S of Morgan's Point:** Upper 80s F.

**Visibility:** Not favoring any visibility concerns for Sunday

## Precip Image: 2 PM CT



Wind Speed  
3 PM CT



High Temps  
Sunday

# Houston Pilots: Mon. 6/17/2024



## Forecast Discussion

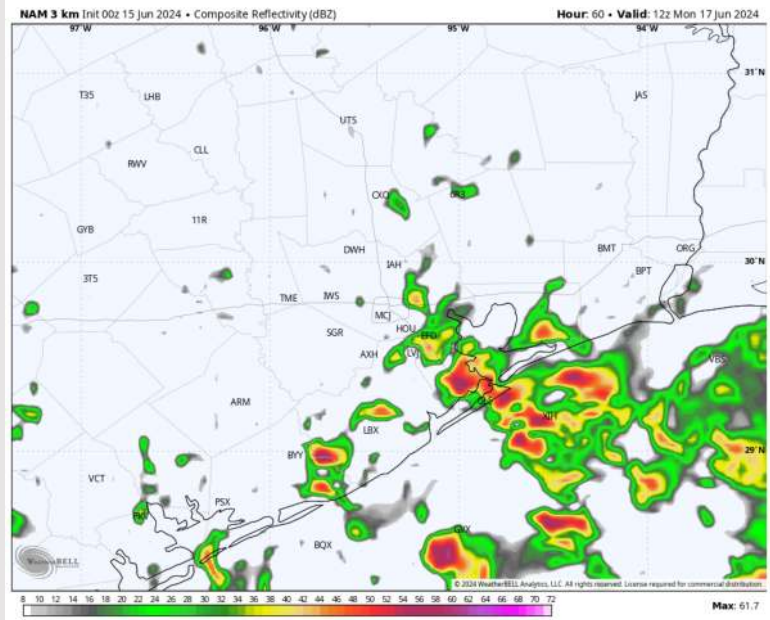
**Precip:** Favoring scattered thunderstorms to push into the area after 6AM-CT Monday Morning. Chances will continue through 7PM with a few breaks in activity possible.

**Wind:** Winds will remain out of the southeast for the entire day. **N of Morgan's Point:** Winds will be at 9-15 kts for the entire day. **S of Morgan's Point:** Winds start at 11 – 18 kts through 4PM before increasing to 15-24kts. **A few gusts of 25-35kts can't be ruled out for all stations S of Morgan's Point.**

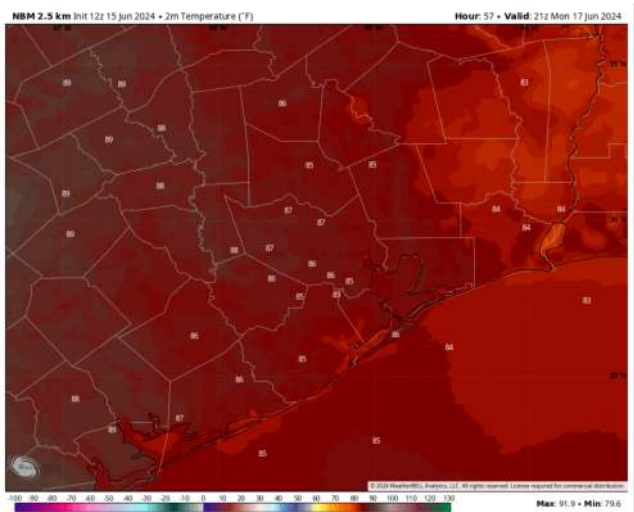
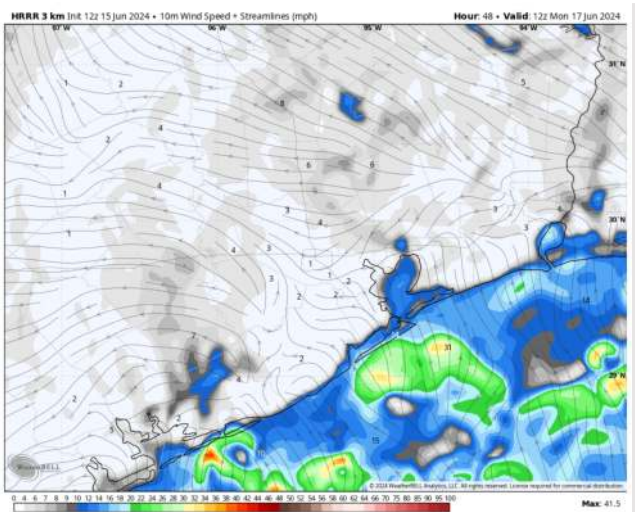
**High Temps:** **N of Morgan's Point:** Mid to upper 80s F. **S of Morgan's Point:** Low 80s F.

**Visibility:** Not anticipating any visibility concerns for Monday.

## Precip Image: 7 AM CT



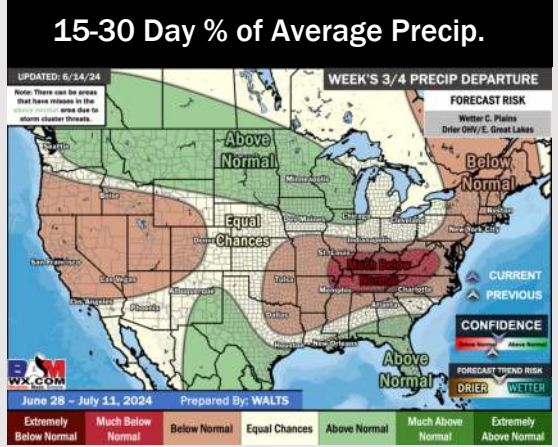
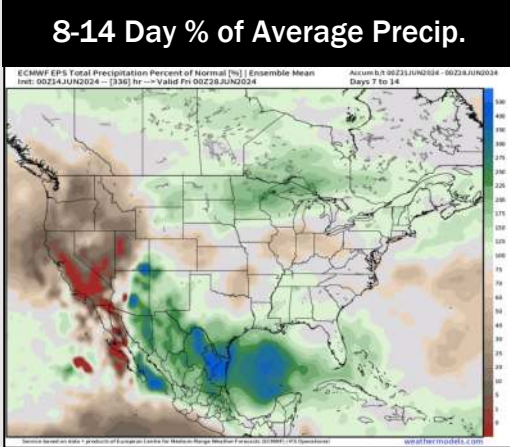
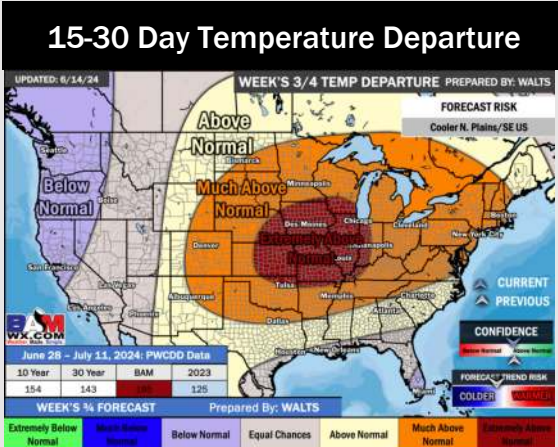
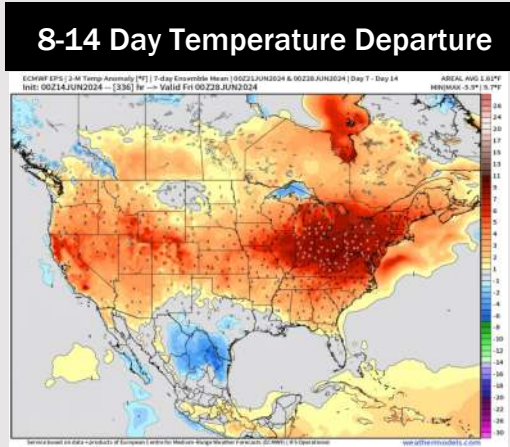
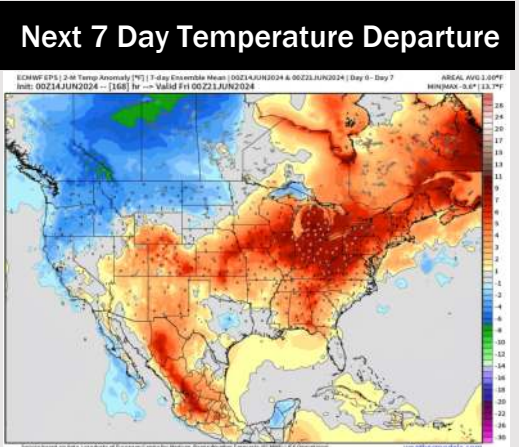
Wind Speed:  
7 AM CT



High Temps  
Monday



# Houston Pilots: 6/15/24



- Temps are expected to be near normal for the week 1 timeframe. Monitoring risk for moderate/heavy rain beginning late this SUN associated with a tropical system. (Check custom graphic for more information)
- Slightly above normal precipitation chances are at play during the week 2 timeframe. Temps are expected to be near normal for week 2.
- Above normal chances for precipitation and near normal temperatures are favored in the weeks 3/4 timeframe.