

# Houston Pilots Forecast Package



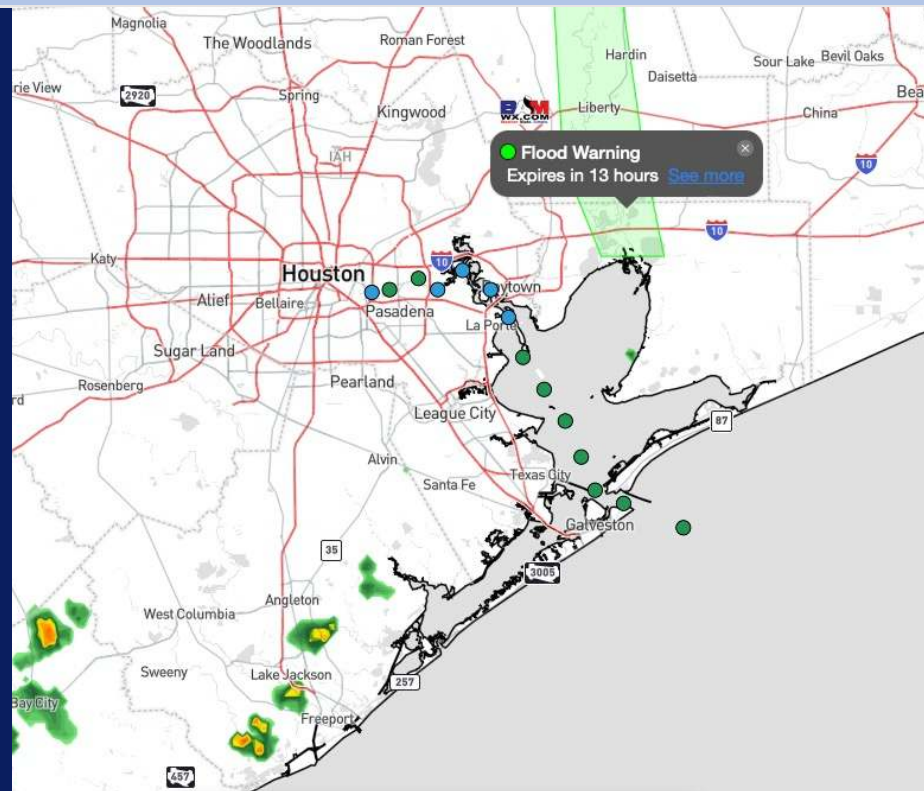
Updated: 1:25 PM CT

Thursday, June 13, 2024

Forecaster: Hope Kleitsch

## Weather Headlines

- Winds to remain relatively calm throughout the rest of the week.
- Low-end patchy fog chances return FRI and into the weekend.
- Moderate/Heavy rain risk will begin SUN, associated with the low-end possibility of the development of a Tropical Depression/Storm. Check custom graphic for more information



**Current Radar: 1:25 PM CT**



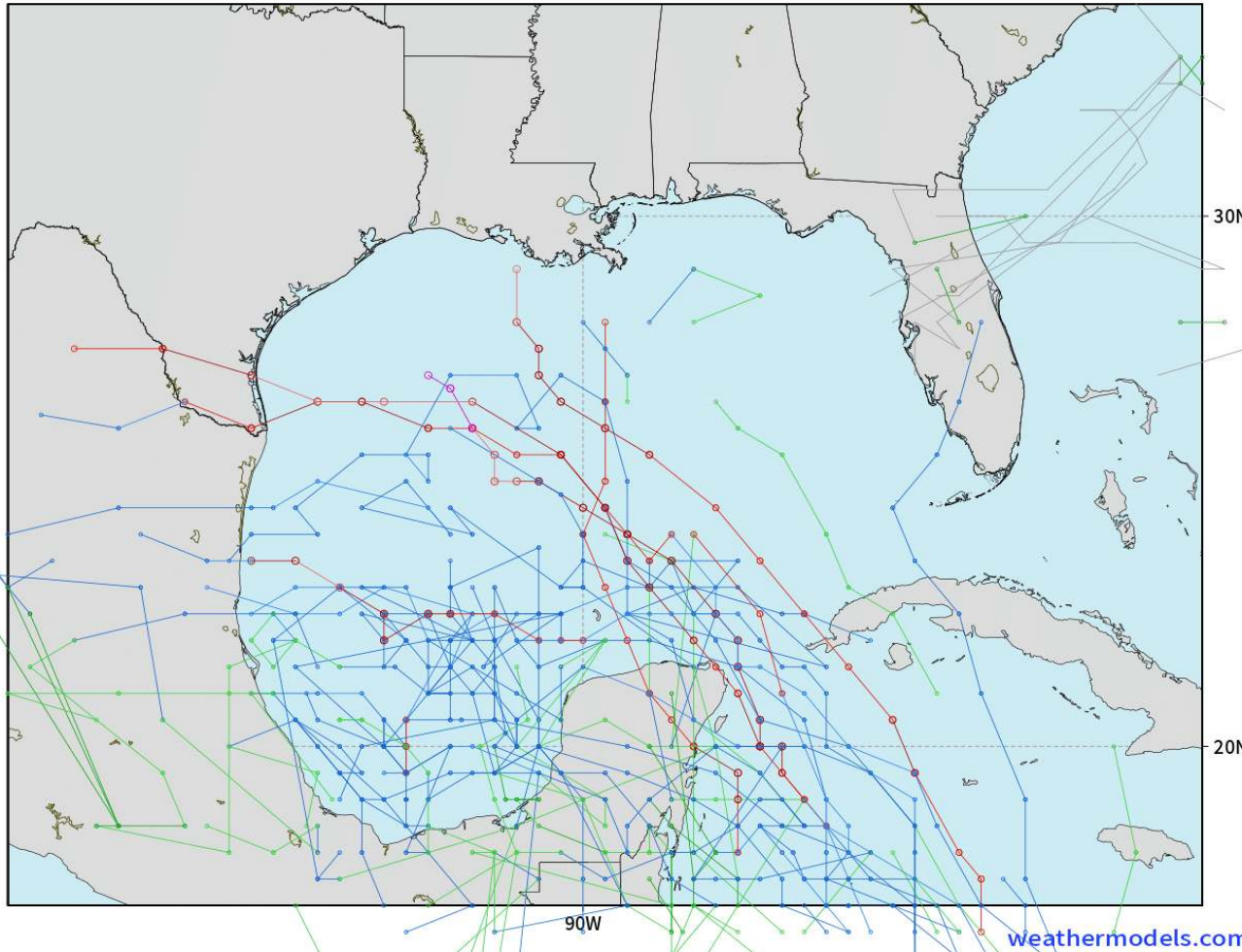
As always, please do not hesitate to reach out to us with any forecast questions via the chat option on Clarity or our on-call number, **(317)-560-8122** press **1** for forecast questions.

# Houston Pilots Tropical Update

## American Model Next 10 Days - Tropical Tracks

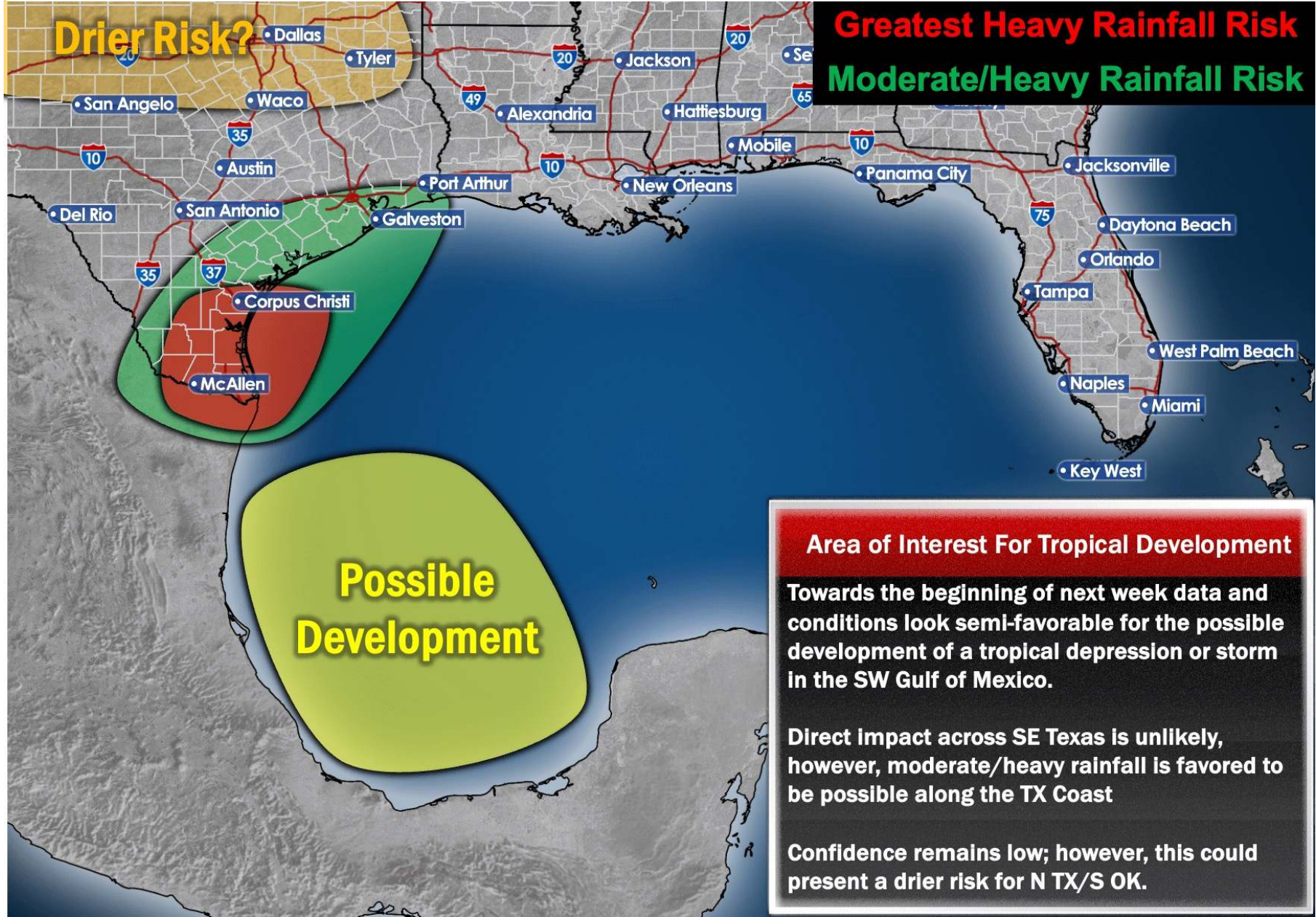
NOAA GEFSv12 | All Ensemble Cyclones +240 Hours  
INIT: 06Z13JUN2024 --> UNTIL 06Z23JUN2024

o-o > 1010 hPa  
o-o 1000 - 1010 hPa  
o-o 980 - 999 hPa  
o-o 960 - 979 hPa  
o-o 950 - 959 hPa  
o-o < 950 hPa



Monitoring a tropical disturbance with the potential to become a Tropical Depression/Storm in the SW Gulf of Mexico between 6/17 - 6/20

As of THU PM, direct impact with Houston is not favored. Periods of moderate/heavy rain and higher seas will be possible during that timeframe.



### Area of Interest For Tropical Development

Towards the beginning of next week data and conditions look semi-favorable for the possible development of a tropical depression or storm in the SW Gulf of Mexico.

Direct impact across SE Texas is unlikely, however, moderate/heavy rainfall is favored to be possible along the TX Coast

Confidence remains low; however, this could present a drier risk for N TX/S OK.

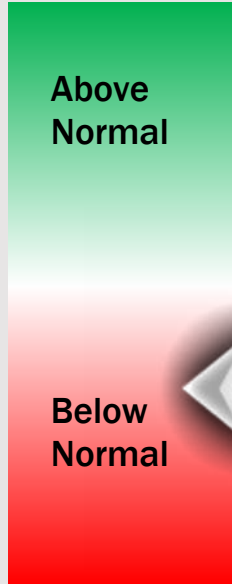
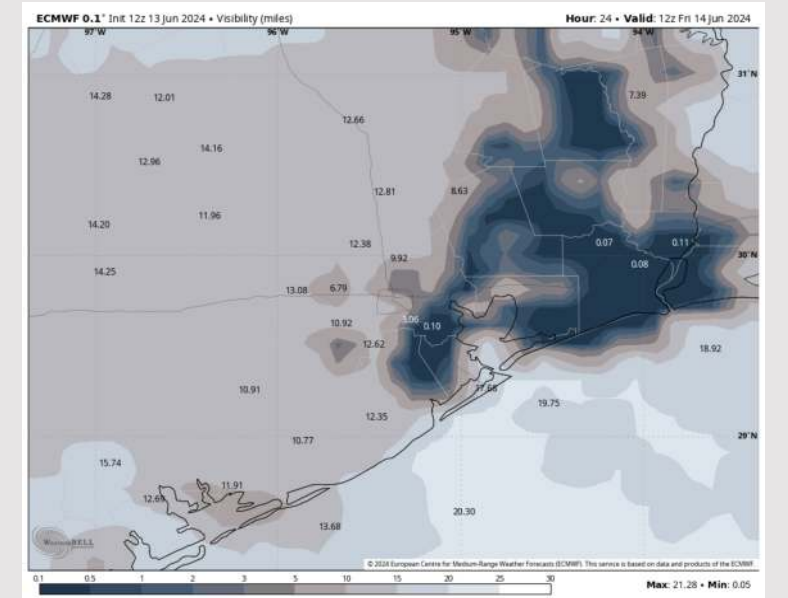
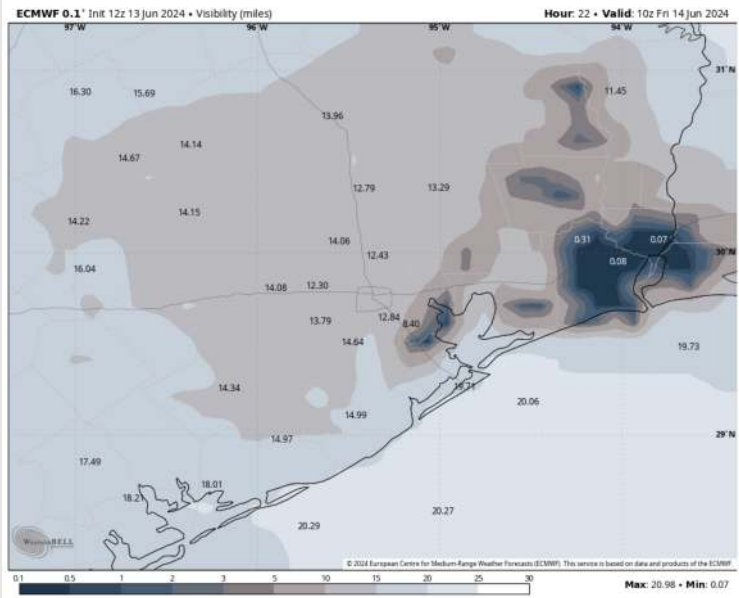
# Houston Pilots Visibility Report



## 5 AM CDT FRI VISIBILITY

## 7 AM CDT FRI VISIBILITY

## Confidence



➤ Watching for a low end patchy fog risk Friday morning between 4 AM – 9 AM.

➤ Visibility within this timeframe could drop to 2 – 4 miles. Cannot rule out a few isolated instances of visibility dropping to 1 – 2 miles.

➤ Anticipating the better threat for this fog development to be over land.

TIMEFRAME DISCUSSED	THREAT
4 AM – 9 AM FRI	Low

# Houston Pilots Visibility Chart (miles)



Time	Thu 1pm	Thu 2pm	Thu 3pm	Thu 4pm	Thu 5pm	Thu 6pm	Thu 7pm	Thu 8pm	Thu 9pm	Thu 10pm	Thu 11pm	Fri 12am	Fri 1am	Fri 2am	Fri 3am	Fri 4am	Fri 5am	Fri 6am	Fri 7am	Fri 8am	Fri 9am	Fri 10am	Fri 11am	Fri 12pm
610 Bridge	10	10	10	10	10	10	10	10	10	10	10	10	10	9	7	10	10	9	6	9	10	10	10	10
Kinder 1	10	10	10	10	10	10	10	10	10	10	10	10	9	9	6	10	10	9	6	9	10	10	10	10
Greens Bayou	10	10	10	10	10	10	10	10	10	10	10	10	7	7	6	10	10	9	6	9	10	10	10	10
Shell Crude	10	10	10	10	10	10	10	10	10	10	10	10	7	7	6	10	10	9	6	9	10	10	10	10
Lynchburg Ferries	10	10	10	10	10	10	10	10	10	10	10	10	7	6	6	10	10	9	6	9	10	10	10	10
Exxon 3	10	10	10	10	10	10	10	10	10	10	10	10	7	6	6	10	10	9	6	9	10	10	10	10
Morgans Point	10	10	10	10	10	10	10	10	10	10	10	10	9	9	9	10	10	10	7	10	10	10	10	10
75/76	10	10	10	10	10	10	10	10	10	10	10	10	10	10	10	10	10	10	9	10	10	10	10	10
63/64	10	10	10	10	10	10	10	10	10	10	10	10	10	10	10	10	10	10	9	10	10	10	10	10
51/52	10	10	10	10	10	10	10	10	10	10	10	10	10	10	10	10	10	10	9	10	10	10	10	10
37/38	10	10	10	10	10	10	10	10	10	10	10	10	10	10	10	10	10	10	9	10	10	10	10	10
25/26	10	10	10	10	10	10	10	10	10	10	10	10	10	10	10	10	10	10	10	10	10	10	10	10
11/12	10	10	10	10	10	10	10	10	10	10	10	10	10	10	10	10	10	10	10	10	10	10	10	10
1 & 2 Bravo	10	10	10	10	10	10	10	10	10	10	10	10	10	10	10	9	7	10	10	7	10	10	10	10

**NOTE: This is automated data that may/may not agree with the official BAM thinking that's found on the daily slides or special visibility report slides. This data should be used as a guide only**

# Houston Pilots Wind Chart



## Forecast Confidence



Sustained wind 13 Knots  
Gusts 18 Knots  
Wind from the N

## Example

WS: 13  
G:18  
N

Time Knots	Thu 1pm	Thu 2pm	Thu 3pm	Thu 4pm	Thu 5pm	Thu 6pm	Thu 7pm	Thu 8pm	Thu 9pm	Thu 10pm	Thu 11pm	Fri 12am	Fri 1am	Fri 2am	Fri 3am	Fri 4am	Fri 5am	Fri 6am	Fri 7am	Fri 8am	Fri 9am	Fri 10am	Fri 11am	Fri 12pm
610 Bridge	4	4	5	5	5	5	5	5	4	3	3	2	1	1	1	1	1	1	1	1	1	1	2	3
	8	9	9	9	9	9	10	8	7	7	6	5	4	3	3	2	2	3	3	3	3	4	5	6
Kinder 1	ENE	ENE	ENE	E	E	ESE	ESE	SE	SSE	SSE	S	S	S	S	NE	N	NNE	NNE	NNE	NE	NE	ENE	ENE	NE
	4	4	5	5	5	5	5	5	4	3	3	2	1	1	1	1	1	1	1	1	1	1	2	3
Greens Bayou	8	9	9	10	9	9	9	8	7	7	6	5	4	3	3	2	2	3	3	3	3	4	5	6
	ENE	ENE	E	E	E	ESE	SE	SE	SSE	SSE	S	S	S	S	N	N	NNE	NNE	NNE	NE	NE	ENE	ENE	NE
Shell Crude	4	4	5	5	5	5	5	5	4	3	3	2	1	1	1	1	1	1	1	1	1	1	2	3
	8	8	9	9	9	9	10	8	7	7	6	4	4	3	3	2	3	3	3	3	3	4	6	6
Lynchburg Ferries	ENE	E	E	E	E	ESE	SE	SE	SSE	S	S	S	S	S	WNW	NNW	N	NNE	NNE	NE	NE	NE	NE	NE
	3	4	5	5	5	5	4	3	3	3	2	1	1	1	1	1	1	1	1	1	1	1	2	3
Exxon 3	8	9	9	9	9	10	8	7	6	5	4	4	4	2	2	2	2	2	3	3	3	4	6	6
	ENE	E	E	E	ESE	SE	SE	SSE	SSE	S	S	S	S	S	WNW	N	NNE	NNE	NE	NE	NE	NE	NE	NE
Morgans Point	5	5	6	7	7	7	7	7	6	5	5	4	3	3	2	2	2	2	3	3	3	3	3	3
	8	10	10	11	11	11	12	10	9	8	7	6	5	4	4	4	4	4	5	5	5	5	6	7
75/76	ESE	SE	SE	SE	SE	SE	SE	SSE	SSE	SSE	S	S	S	S	SSW	NW	NNE	NNE	NE	NE	NE	ENE	ENE	E
	5	5	6	7	7	7	8	7	7	6	5	5	4	3	3	3	3	3	3	3	3	3	4	4
63/64	9	10	11	11	11	11	12	10	10	9	8	7	6	5	5	4	4	4	5	5	5	6	7	7
	E	ESE	SE	SE	SE	SE	SE	SSE	SSE	SSE	SSE	S	S	S	S	SE	ENE	NE	NE	NE	ENE	ENE	ENE	ENE
51/52	5	5	6	7	7	7	7	7	6	5	5	5	4	3	3	3	3	3	3	3	3	4	4	4
	9	10	10	11	11	11	11	10	9	8	7	6	6	5	5	5	5	5	5	5	6	6	7	8
37/38	E	ESE	SE	SE	SE	SE	SSE	SSE	SSE	SSE	SSE	SSE	SSE	SSE	SE	E	ENE	ENE	ENE	ENE	ENE	NE	NE	NE
	5	5	6	7	7	7	7	7	6	5	5	5	4	3	3	3	3	3	3	3	3	4	4	4
25/26	9	10	10	11	11	11	11	10	9	8	7	6	5	5	5	5	5	5	5	5	6	7	7	7
	E	E	ESE	ESE	SE	SE	SE	SSE	SSE	SSE	SSE	SSE	SSE	SSE	SE	ESE	E	E	ENE	ENE	ENE	NE	NE	NE
11/12	6	6	6	7	7	7	7	6	6	5	5	5	4	3	3	3	3	3	3	3	3	4	4	5
	9	10	10	10	10	10	11	9	9	8	7	7	7	6	6	5	5	5	5	5	6	7	7	7
1 & 2 Bravo	E	ESE	ESE	ESE	SE	SE	SE	SSE	SSE	SSE	SSE	SSE	SSE	SSE	SE	ESE	E	E	ENE	ENE	ENE	ENE	ENE	ENE
	6	6	6	7	7	7	7	7	7	7	7	6	5	5	4	3	3	3	3	3	3	4	5	5

**NOTE: This is automated data that may/may not agree with the official BAM thinking that's found on the daily slides. This data should be used as a guide only.**

## Forecast Discussion

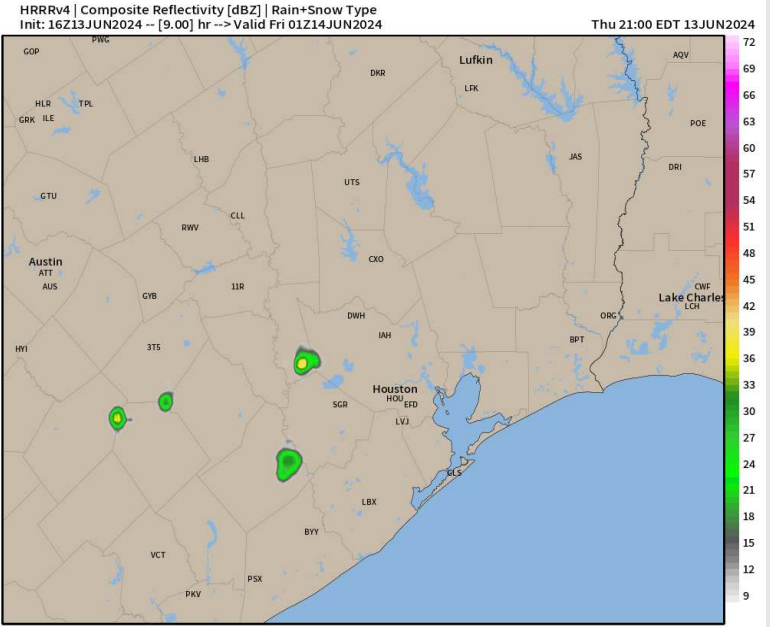
**Precip:** Rain chances continue to push off to the southwest. Dry conditions will persist throughout the rest of the evening and overnight.

**Wind:** Winds continue out of the east before shifting to be out of the southeast after 5 PM. Winds will stay out of the SE throughout the overnight hours. **N of Morgan's Point:** Favoring winds at 6 – 10 kts throughout THU PM. **S of Morgan's Point:** Favoring winds at 4 - 6 kts until the early AM FRI.

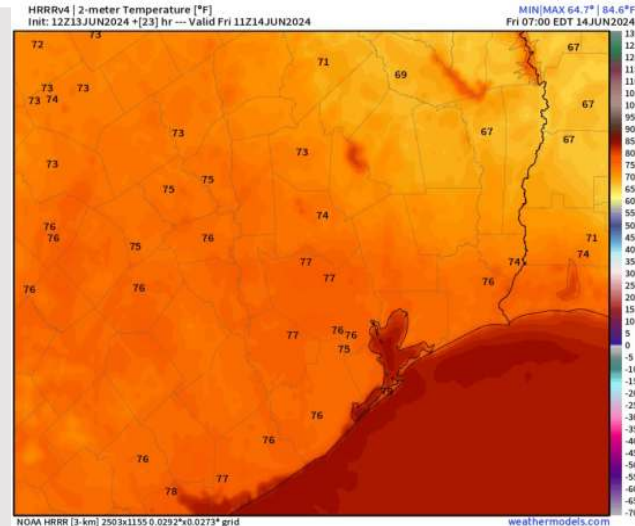
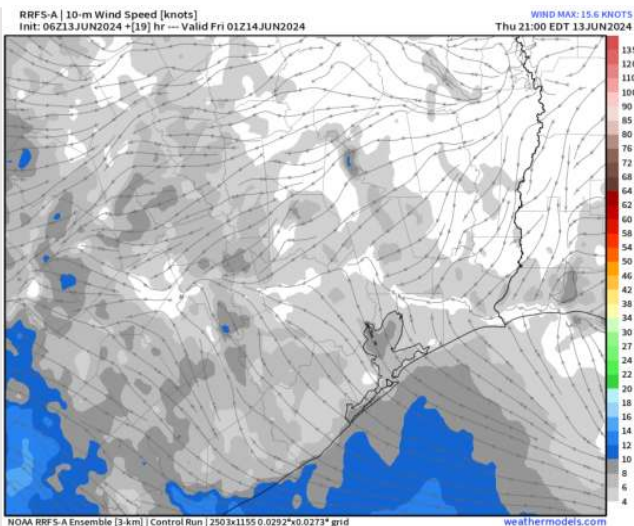
**Low Temps:** **N of Morgan's Point:** Mid 70's F. **S of Morgan's Point:** Mid 80s F.

**Visibility:** Monitoring a low end risk for patchy fog Friday AM (see Friday slide for more information).

## Precip Image: 8 PM CT



Wind Speed  
8 PM CT



Low Temps  
FRI AM

## Forecast Discussion

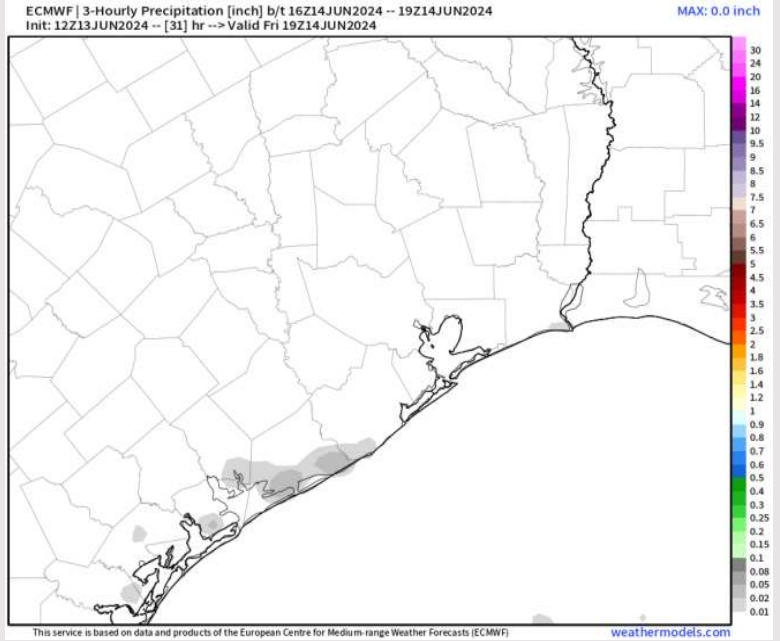
**Precip:** Dry conditions favored for Friday.

**Wind:** Expecting variable winds through 10AM, before shifting clockwise from the N through 4PM. After 4 PM, winds will settle out of the SE. **N of Morgan's Point:** Winds at 2-7 kts throughout the day on Friday. **S of Morgan's Point:** Winds at 4-9 kts throughout the day before increasing to 8- 14 kts after 5 PM.

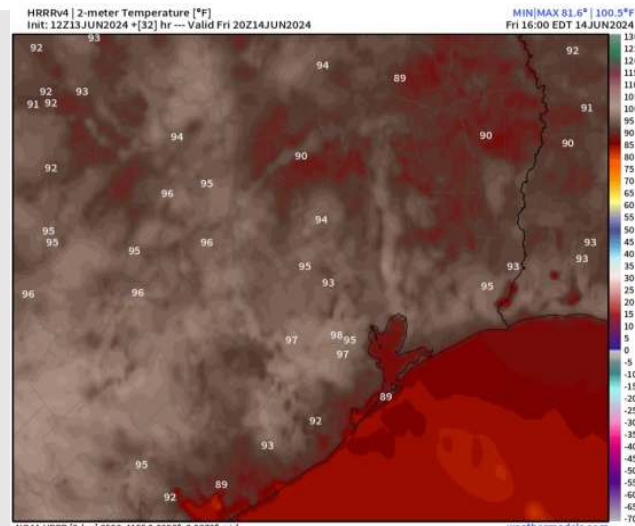
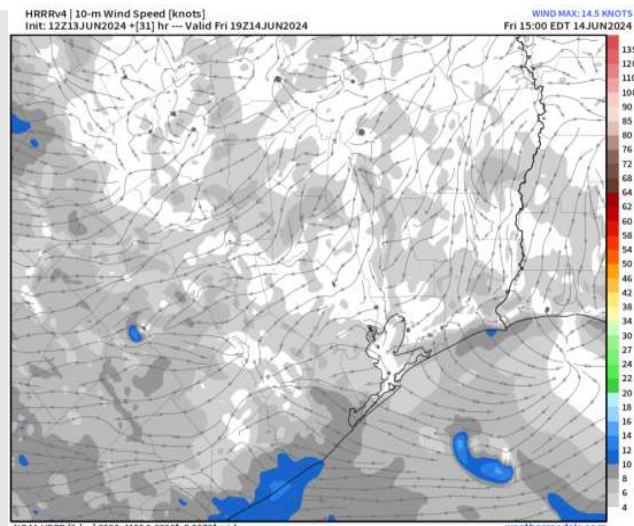
**High Temps:** **N of Morgan's Point:** Mid to upper 90s F. **S of Morgan's Point:** Near 90 F.

**Visibility:** Watching a low-end risk for patchy fog development, reducing visibilities to 2 - 4 miles between ~4 AM - 9 AM.

## Precip Image: 2 PM CT



Wind Speed:  
2 PM CT



High Temps  
Friday



## Forecast Discussion

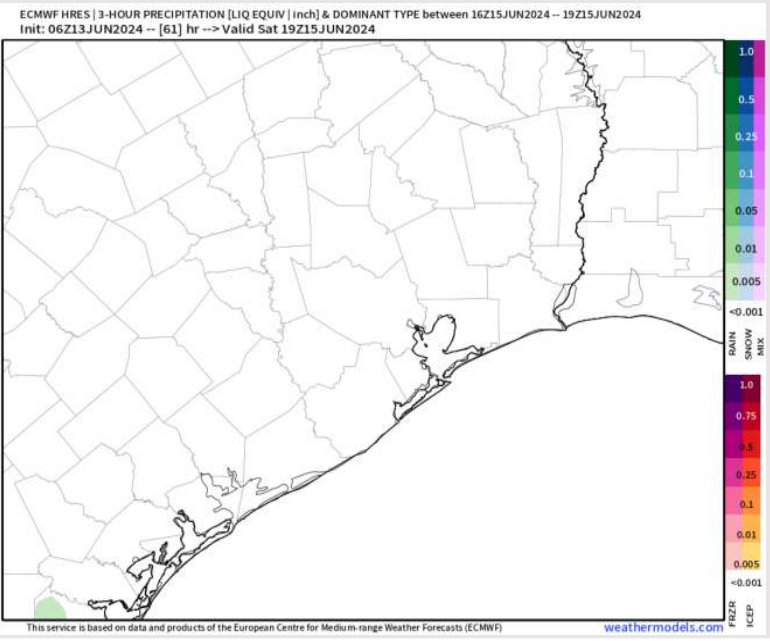
**Precip:** Favoring dry conditions SAT.

**Wind:** Winds will be variable through 12 PM, before settling out of the E/SE. **N of Morgan's Point:** Winds at 2-7 kts through 3PM, before a slight increase to 5-10 kts throughout the rest of the day. **S of Morgan's Point:** Winds at 3-8 kts through 3PM, before increasing to 7-12 kts throughout the rest of the day.

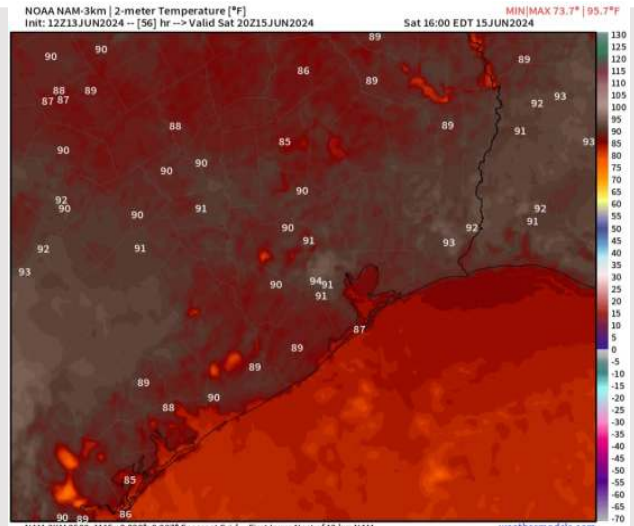
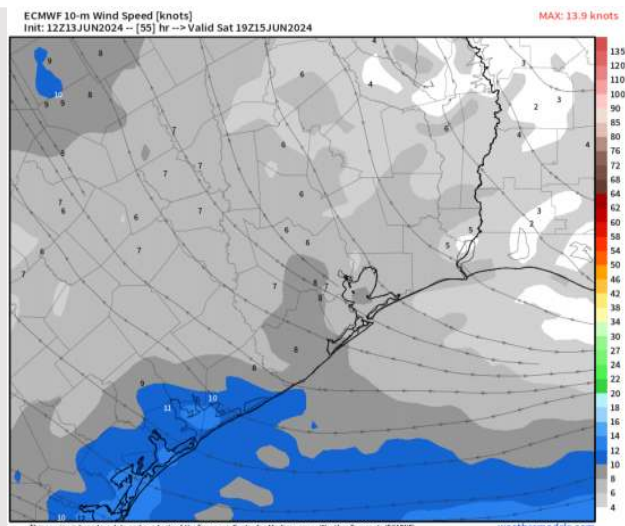
**High Temps:** **N of Morgan's Point:** Mid 90s F **S of Morgan's Point:** Upper 80s F.

**Visibility:** Favoring a low-end patchy fog risk for locations N of Morgan's point.

## Precip Image: 2 PM CT



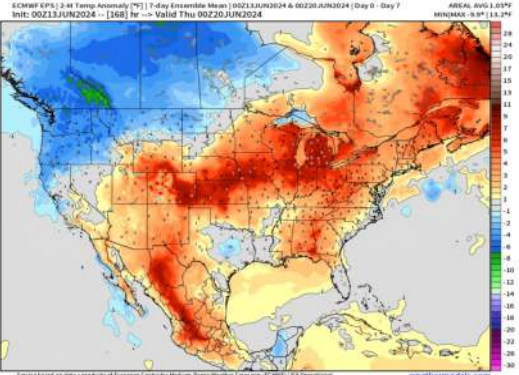
Wind Speed:  
2 PM CT



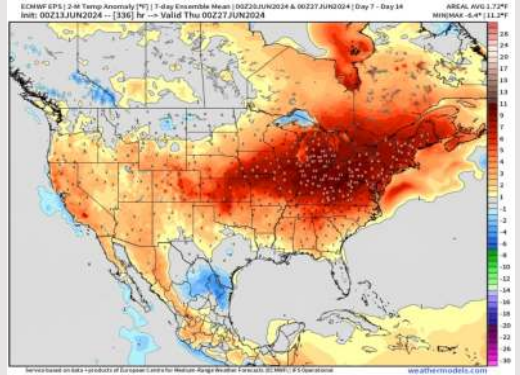
High Temps  
Saturday

# Houston Pilots: 6/13/24

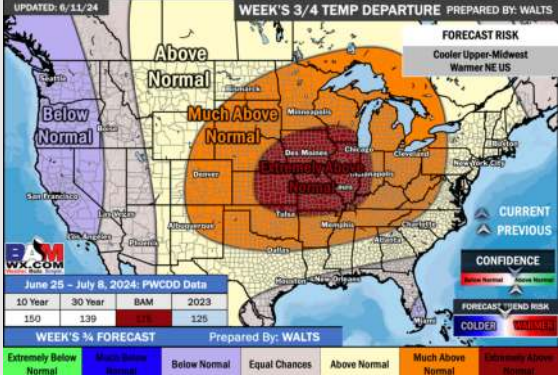
**Next 7 Day Temperature Departure**



**8-14 Day Temperature Departure**



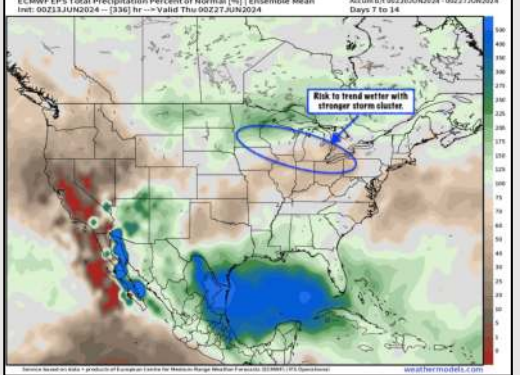
**15-30 Day Temperature Departure**



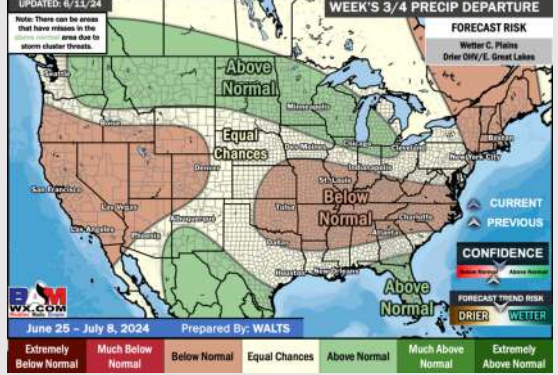
**Next 7 Day Total Precipitation**



**8-14 Day % of Average Precip.**



**15-30 Day % of Average Precip.**



- Temps are expected to be near normal for the week 1 timeframe. Monitoring risk for moderate/heavy rain beginning next SUN associated with a tropical system. **(Check custom graphic for more information)**
- Slightly above normal precipitation chances are at play during the week 2 timeframe. Temps are expected to be near normal for week 2.
- Near normal chances for precipitation and temperatures are favored in the weeks 3/4 timeframe.