

# Houston Pilots Forecast Package



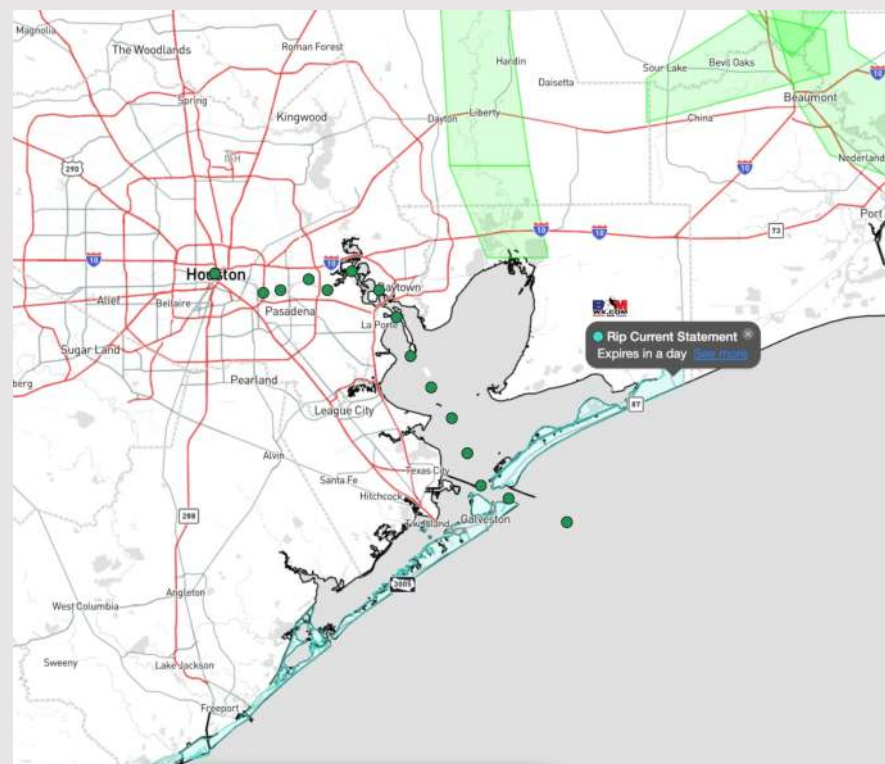
Updated: 10:40 PM CT

Sunday, June 2, 2024

Forecaster: Xander Lowry

## Weather Headlines

- Winds are expected to become gradually elevated to start the week, especially S of Morgan's Point.
- Drier conditions favored for the first half of the week, with only low-end precip chances.
- **Wave heights for 11/12 and Boarding Station not favored to exceed 3.5 ft at any point this weekend. Next potential to see 4ft+ to be on 6/4. See wave height slide for more info.**



Current Radar: 10:40 PM CT



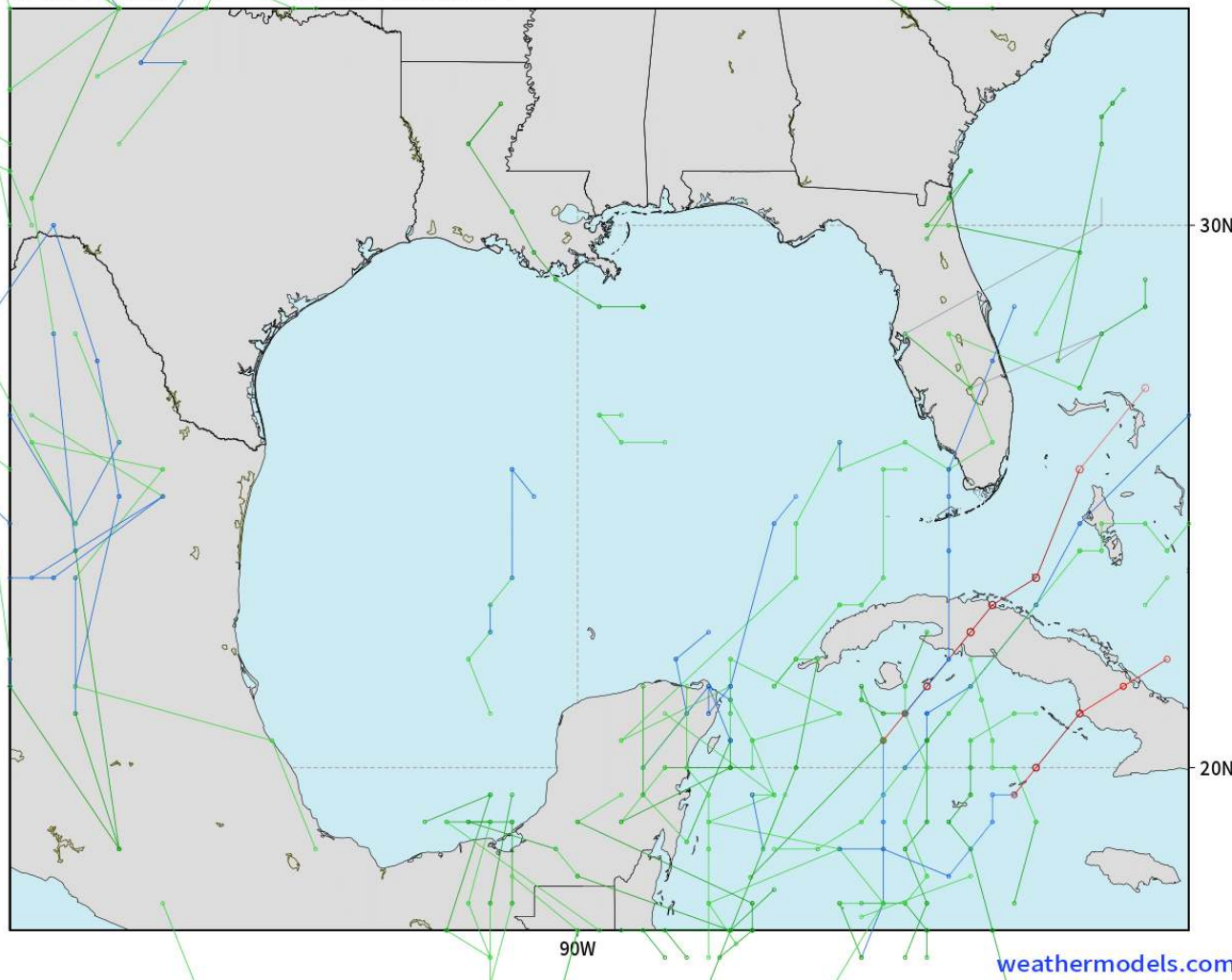
As always, please do not hesitate to reach out to us with any forecast questions via the chat option on Clarity or our on-call number, **(317)-560-8122** press 1 for forecast questions.

# Houston Pilots Tropical Update

## American Model Next 10 Days - Tropical Tracks

NOAA GEFSv12 | All Ensemble Cyclones +240 Hours  
INIT: 18Z02JUN2024 --> UNTIL 18Z12JUN2024

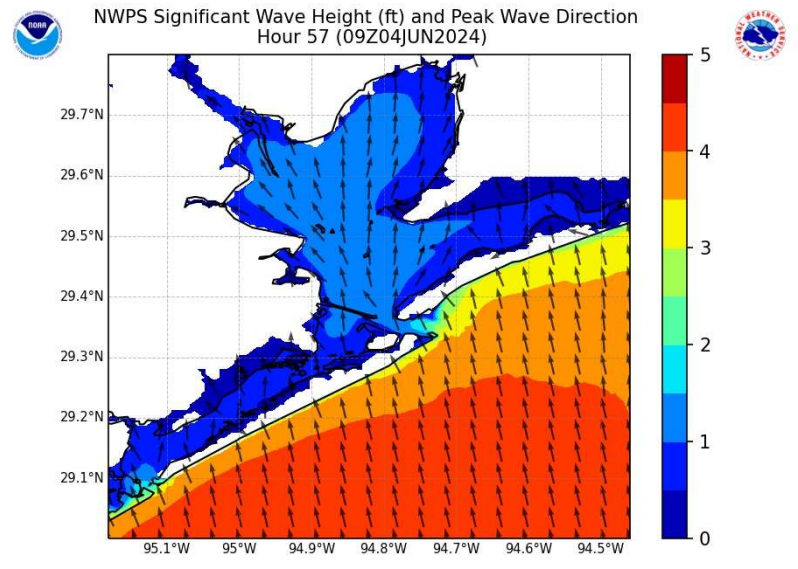
o-o > 1010 hPa  
o-o 1000 - 1010 hPa  
o-o 980 - 999 hPa  
o-o 960 - 979 hPa  
o-o 950 - 959 hPa  
o-o < 950 hPa



**Tropical  
Development in  
the Gulf of Mexico  
is not favored in  
the next 7-10 days.**

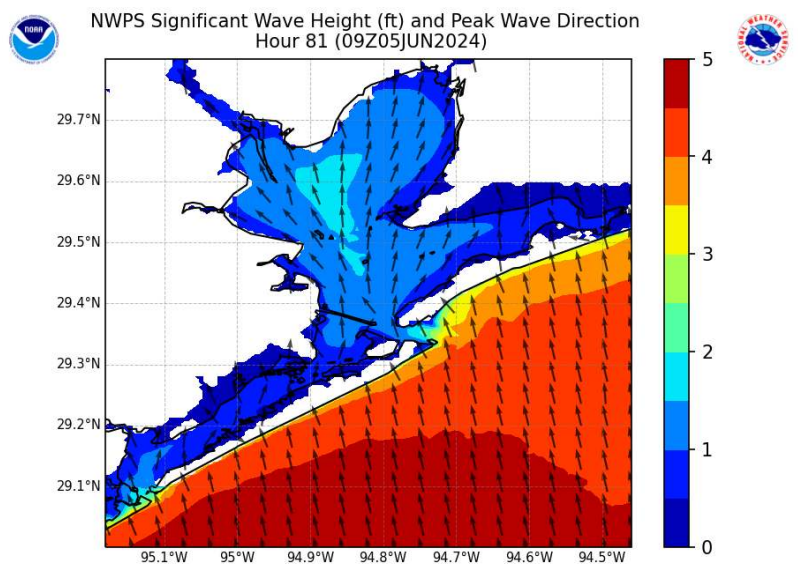
# Houston Pilots Wave Height Update

## Significant Wave Height Image



4 AM CT TUE

Periods of strong winds will result in increasing wave heights MON AM. By 10AM MON waves heights will be in the 3 – 3.5 ft range at the Boarding Station.



4 AM CT WED

Waves are favored to continue to slowly increase throughout the day on MON and into TUE AM. By 4 AM TUE favoring wave heights in the 4' – 4.5' range near the Boarding Station. These will continue through WED AM.

# Houston Pilots Visibility Chart (miles)



## Forecast Confidence



Time	Sun 11pm	Mon 12am	Mon 1am	Mon 2am	Mon 3am	Mon 4am	Mon 5am	Mon 6am	Mon 7am	Mon 8am	Mon 9am	Mon 10am	Mon 11am	Mon 12pm	Mon 1pm	Mon 2pm	Mon 3pm	Mon 4pm	Mon 5pm	Mon 6pm	Mon 7pm	Mon 8pm	Mon 9pm	Mon 10pm
610 Bridge	10	10	10	10	10	9	10	10	6	6	10	10	10	10	10	10	10	10	10	10	10	10	10	10
Kinder 1	10	10	10	10	10	9	10	10	6	6	10	10	10	10	10	10	10	10	10	10	10	10	10	10
Greens Bayou	10	10	10	10	10	9	10	10	6	6	10	10	10	10	10	10	10	10	10	10	10	10	10	10
Shell Crude	10	10	10	10	10	9	10	10	6	6	10	10	10	10	10	10	10	10	10	10	10	10	10	10
Lynchburg Ferries	10	10	10	10	10	9	10	10	6	6	10	10	10	10	10	10	10	10	10	10	10	10	10	10
Exxon 3	10	10	10	10	10	9	10	10	6	6	10	10	10	10	10	10	10	10	10	10	10	10	10	10
Morgans Point	10	10	10	10	10	9	10	10	6	6	10	10	10	10	10	10	10	10	10	10	10	10	10	10
75/76	10	10	10	9	9	7	9	9	6	6	10	10	10	10	10	10	9	9	10	10	10	9	10	9
63/64	10	10	10	9	9	7	9	9	6	6	10	10	10	10	10	10	9	9	10	10	10	9	10	10
51/52	10	10	10	9	7	7	9	9	6	6	10	10	10	10	10	10	7	7	9	10	10	6	10	10
37/38	10	10	10	9	7	7	9	9	6	6	10	10	10	10	10	10	7	7	9	10	10	6	10	10
25/26	10	10	10	9	7	7	9	9	6	6	10	10	10	10	10	10	6	6	9	10	7	6	10	10
11/12	10	10	10	7	6	6	6	7	6	6	9	10	10	10	10	9	6	6	7	9	7	6	10	10
1 & 2 Bravo	6	6	6	6	6	6	6	6	5	6	6	6	6	6	6	6	5	4	5	6	5	5	10	10

**NOTE: This is automated data that may/may not agree with the official BAM thinking that's found on the daily slides or special visibility report slides. This data should be used as a guide only**



# Houston Pilots Wind Chart



## Forecast Confidence



## Example

Sustained wind 13 Knots  
Gusts 18 Knots  
Wind from the N

WS: 13  
G:18  
N

Time Knots	Sun 11pm	Mon 12am	Mon 1am	Mon 2am	Mon 3am	Mon 4am	Mon 5am	Mon 6am	Mon 7am	Mon 8am	Mon 9am	Mon 10am	Mon 11am	Mon 12pm	Mon 1pm	Mon 2pm	Mon 3pm	Mon 4pm	Mon 5pm	Mon 6pm	Mon 7pm	Mon 8pm	Mon 9pm	Mon 10pm
610 Bridge	7	7	7	7	7	7	7	7	7	8	9	9	10	11	11	11	11	12	11	11	11	10	9	9
	16	16	15	15	15	15	15	15	15	16	17	18	20	21	22	22	23	24	23	22	21	20	19	18
	SE	SSE	SSE	SE	SSE	SSE	SSE	SSE	SSE	SSE	S	S	S	S	S	S	S	S	SSE	SSE	SSE	SSE	SSE	SSE
Kinder 1	7	7	7	7	7	7	7	7	7	8	9	9	10	11	11	11	11	11	11	11	10	10	9	9
	16	16	15	15	15	15	15	15	15	16	17	18	19	21	22	22	23	23	23	22	21	20	19	18
	SE	SSE	SSE	SE	SSE	SSE	SSE	SSE	SSE	SSE	S	S	S	S	S	S	S	S	SSE	SSE	SSE	SSE	SSE	SSE
Greens Bayou	7	7	7	7	7	7	7	7	7	8	9	9	10	11	11	11	11	11	11	11	10	10	9	9
	16	16	15	15	15	15	15	15	15	16	17	18	19	20	21	21	21	22	22	21	20	19	19	18
	SE	SSE	SSE	SSE	SSE	SSE	SSE	SSE	SSE	SSE	S	S	S	S	S	S	S	SSE	SSE	SSE	SSE	SSE	SSE	SSE
Shell Crude	7	7	7	7	7	7	7	7	7	8	9	9	10	11	11	11	11	11	11	11	10	10	9	9
	16	16	15	15	15	15	15	15	15	16	17	18	19	20	21	21	21	22	22	21	20	19	19	18
	SE	SSE	SSE	SSE	SSE	SSE	SSE	SSE	SSE	SSE	S	S	S	S	SSE	S	S	SSE	SSE	SSE	SSE	SSE	SSE	SSE
Lynchburg Ferries	7	7	7	7	7	7	7	7	7	8	9	9	11	11	11	11	12	12	12	11	10	10	9	9
	16	15	15	15	15	15	15	15	15	16	17	18	19	20	21	21	22	22	22	21	20	19	19	18
	SE	SSE	SSE	SSE	SSE	SSE	SSE	SSE	SSE	SSE	S	S	S	S	SSE	SSE	SSE	SSE	SSE	SSE	SSE	SSE	SSE	SSE
Exxon 3	12	12	11	11	11	11	11	11	11	12	12	13	13	13	13	13	14	14	14	14	14	13	13	13
	18	18	17	17	17	16	16	16	16	17	18	18	19	20	22	21	22	23	22	22	21	20	20	20
	SE	SSE	SSE	SSE	SSE	SSE	SSE	SSE	SSE	SSE	S	S	S	SSE	SSE	SSE	SSE	SSE	SSE	SSE	SSE	SSE	SSE	SSE
Morgans Point	12	12	12	11	11	11	11	11	11	12	12	13	13	13	13	13	14	14	14	14	13	13	13	13
	18	18	18	17	17	17	17	17	17	18	18	19	19	20	21	21	22	22	22	22	21	20	20	20
	SE	SSE	SSE	SSE	SSE	SSE	SSE	SSE	SSE	S	S	S	S	SSE	SSE	SSE	SSE	SSE	SSE	SSE	SSE	SSE	SSE	SSE
75/76	13	13	13	13	13	13	13	13	13	13	14	14	13	14	14	15	15	15	15	15	15	15	15	15
	20	20	19	19	19	19	19	19	19	19	20	21	21	22	23	22	23	23	23	23	22	22	22	21
	SE	SSE	SSE	SSE	SSE	SSE	SSE	S	S	SSE	S	S	S	S	SSE	SSE	SSE	SSE	SSE	SSE	SSE	SSE	SSE	SSE
63/64	13	13	13	13	13	13	13	13	13	14	14	14	14	14	14	15	15	15	15	15	15	15	15	15
	20	20	19	19	19	19	19	19	19	19	21	21	21	22	23	22	23	23	23	22	22	21	22	21
	SE	SSE	SSE	SSE	SSE	SSE	SSE	S	S	S	S	S	S	S	SSE	SSE	SSE	SSE	SSE	SSE	SSE	SSE	SSE	SSE
51/52	14	14	14	14	14	13	14	14	14	14	14	15	15	15	14	14	15	15	15	15	15	15	15	15
	20	20	20	20	20	19	19	19	19	20	21	21	21	21	22	22	22	23	22	22	21	21	21	21
	SE	SSE	SSE	SSE	SSE	SSE	S	S	S	S	S	S	S	S	SSE	SSE	SSE	SSE	SSE	SSE	SSE	SSE	SSE	SSE
37/38	14	14	14	14	14	14	14	14	14	14	15	15	15	14	14	14	15	15	15	15	15	15	15	15
	20	20	20	20	20	19	20	19	19	20	21	21	21	21	22	21	22	23	22	22	21	21	21	21
	SE	SSE	SSE	SSE	SSE	SSE	SSE	S	S	S	S	S	S	S	SSE	SSE	SSE	SSE	SSE	SSE	SSE	SSE	SSE	SSE
25/26	13	13	13	13	13	13	13	13	13	14	14	14	14	14	14	14	15	14	14	14	14	14	14	15
	20	20	19	19	19	19	19	19	19	19	20	21	21	21	21	21	21	21	22	22	21	21	21	21
	SE	SSE	SSE	SSE	SSE	SSE	SSE	SSE	SSE	S	S	S	S	S	SSE	SSE	SSE	SSE	SSE	SSE	SSE	SSE	SSE	SSE
11/12	12	12	12	12	12	12	12	12	12	13	13	13	13	13	13	13	13	14	14	13	13	13	13	13
	19	19	19	19	19	19	19	19	19	19	20	20	20	20	20	20	21	21	21	21	20	20	20	20
	SSE	SSE	SSE	SSE	SSE	SSE	SSE	SSE	SSE	S	S	S	S	S	S	SSE	SSE	SSE	SSE	SSE	SSE	SSE	SSE	SSE
1 & 2 Bravo	14	14	14	14	14	14	15	15	14	15	15	15	15	14	14	14	14	14	15	15	15	15	15	15
	20	20	20	20	20	20	20	20	20	20	21	21	20	20	20	20	21	21	21	22	21	22	21	22
	SE	SSE	SSE	SSE	SSE	SSE	SSE	SSE	SSE	S	SSE	S	S	S	SSE	SSE	SSE	SSE	SSE	SSE	SSE	SSE	SSE	SSE

NOTE: This is automated data that may/may not agree with the official BAM thinking that's found on the daily slides. This data should be used as a guide only.

# Houston Pilots: Mon. 6/3/2024



## Forecast Discussion

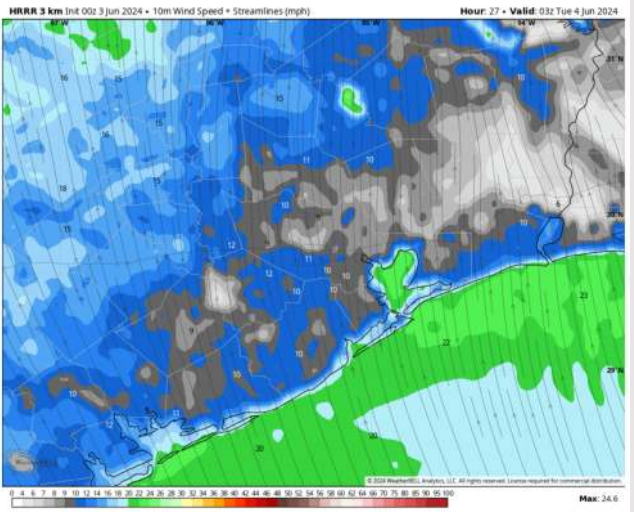
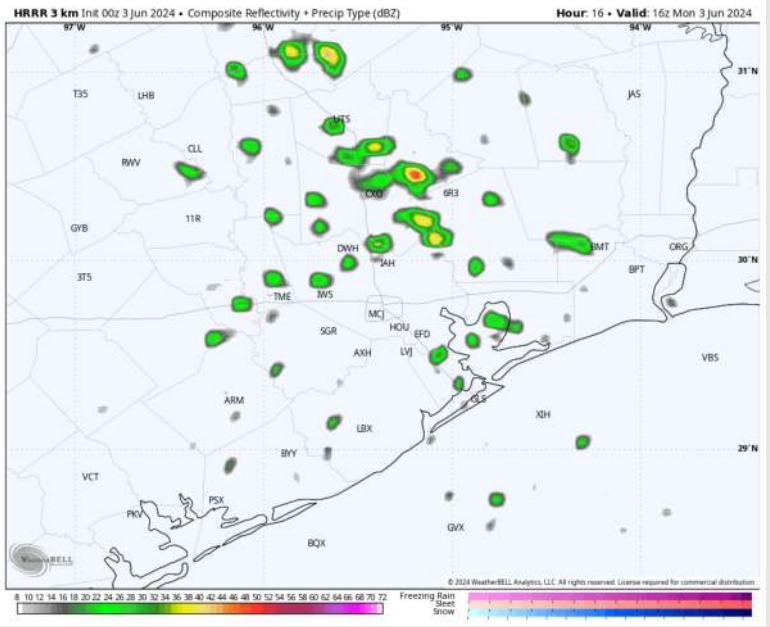
**Precip:** Favoring mostly dry conditions outside of isolated light showers anytime from 4 AM through 6 PM.

**Wind:** Winds will be out of S/SE for the entire day. **N of Morgan's Point:** Winds at 7-12 kts through 9 AM then increase to 10-15 kts for the PM. **S of Morgan's Point:** Winds increase to 18-23 kts just after midnight and remain there throughout the day today. **Wind gusts of 22-27 kts possible after 10 AM for all stations**

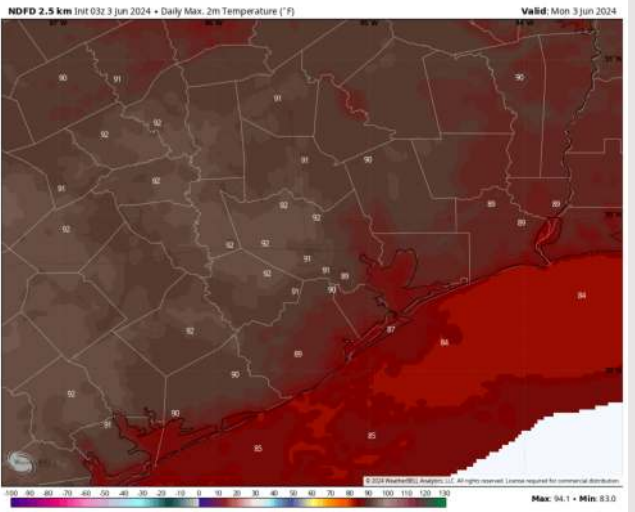
**High Temps:** **N of Morgan's Point:** Near/Low 90s F **S of Morgan's Point:** Low/Mid 80s F.

**Visibility:** Not anticipating any visibility concerns for today.

## Precip Image: 11 AM CT



Wind Speed:  
10 PM CT



High Temps  
Monday



# Houston Pilots: Tue. 6/4/2024



## Forecast Discussion

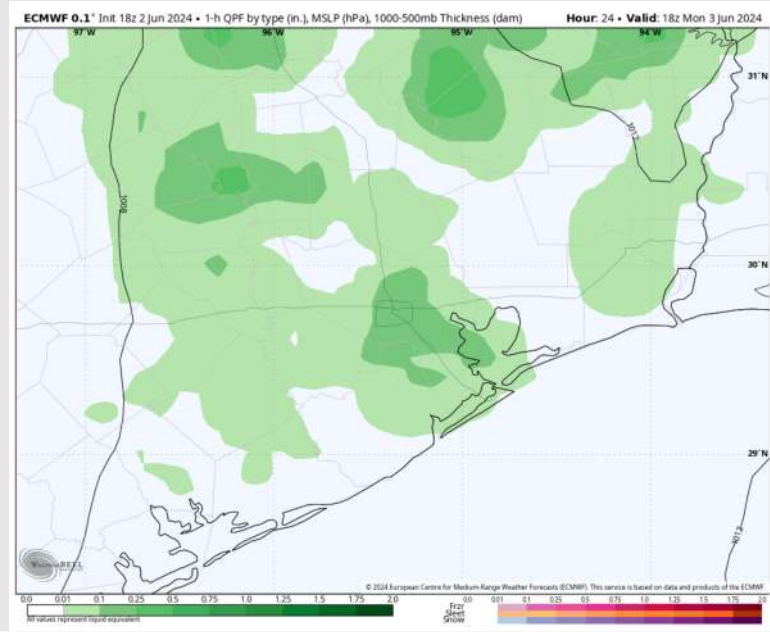
**Precip:** Favoring dry conditions aside from a window between 9AM– 5PM for a scattered rain showers.

**Wind:** Winds out of the S/SE throughout the day. **N of Morgan's Point:** Favoring winds at 7 – 12 kts through 8AM before increasing to 12 – 17 kts throughout the rest of the day. **S of Morgan's Point:** Winds at 21-26 kts. Winds then calm slightly after 12 PM to 19-24 kts the rest of the day. **Wind gusts of 22-27 kts possible after 4 AM at all stations (locally higher of 30-35 kts between 4 AM and 10 AM S of Morgan's Point)**

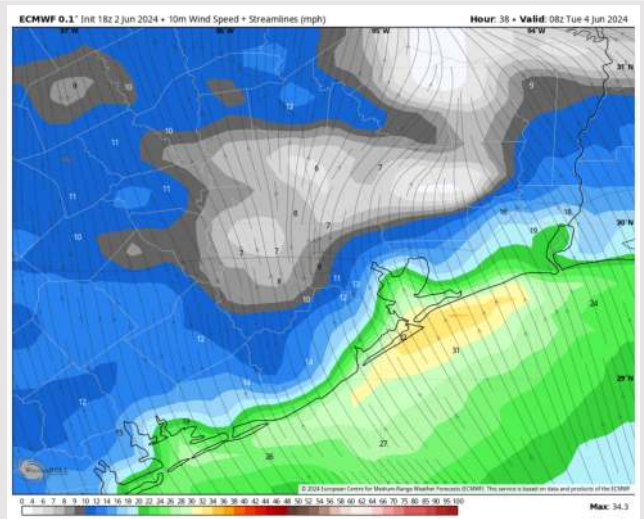
**High Temps:** **N of Morgan's Point:** Low/mid 90s F. **S of Morgan's Point:** Upper 80s F.

**Visibility:** Not anticipating any fog risk for Tuesday.

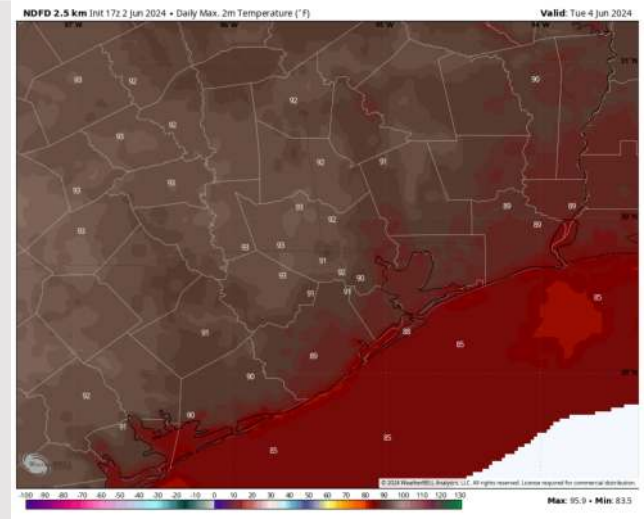
## Precip Image: 1 PM CT



Wind Speed  
3 AM CT



High Temps  
Tuesday



## Forecast Discussion

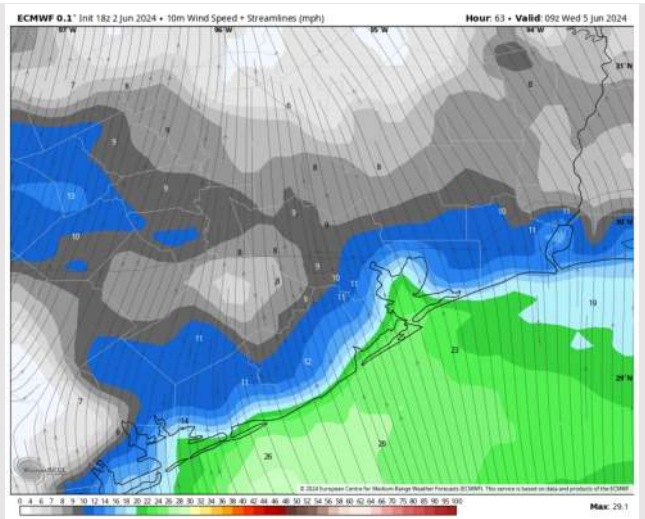
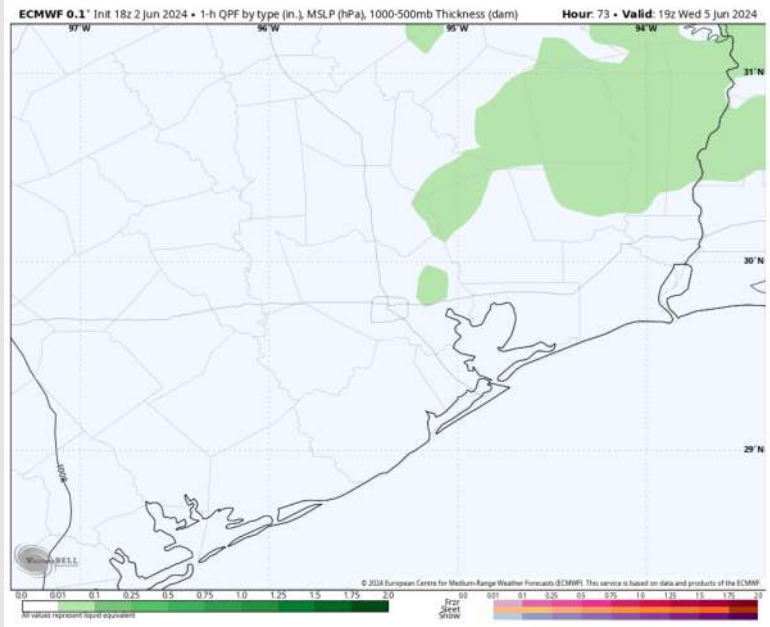
**Precip:** Aside from a few isolated (10%) shower for locations N of Morgan's Point between 8AM -4 PM CT, favoring dry conditions throughout the day WED.

**Wind:** Winds out of the S/SE throughout the day. **N of Morgan's Point:** Favoring winds at 9 – 14 kts throughout the day, aside from a brief calmer period between 6AM – 12PM. **S of Morgan's Point:** Favoring winds at 21 – 26 kts through 7AM, before decreasing to 10 – 15 kts for the rest of the day

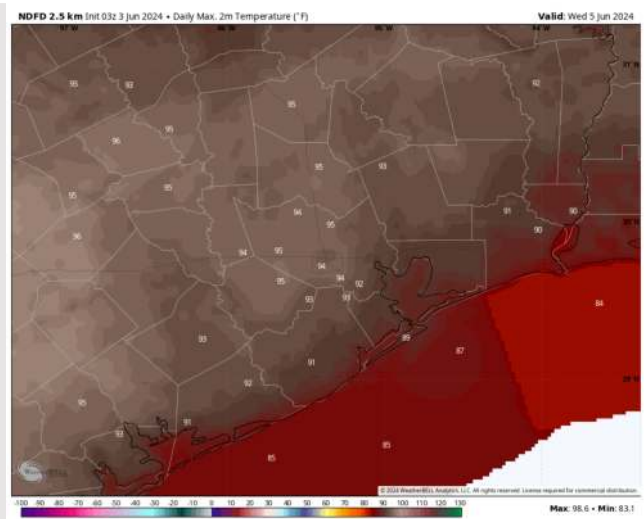
**High Temps:** **N of Morgan's Point:** Low/mid 90s F. **S of Morgan's Point:** Upper 80s F.

**Visibility:** Not anticipating any fog for Wednesday.

## Precip Image: 2 PM CT



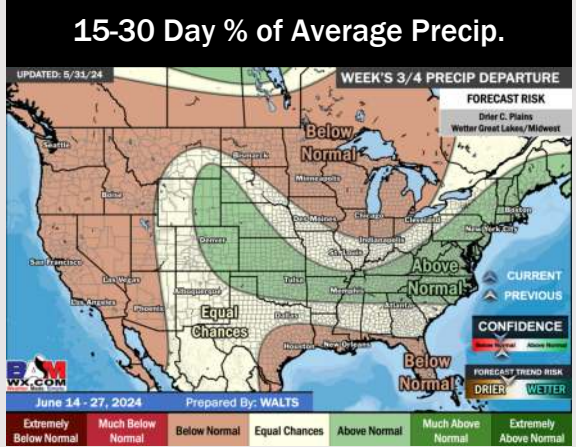
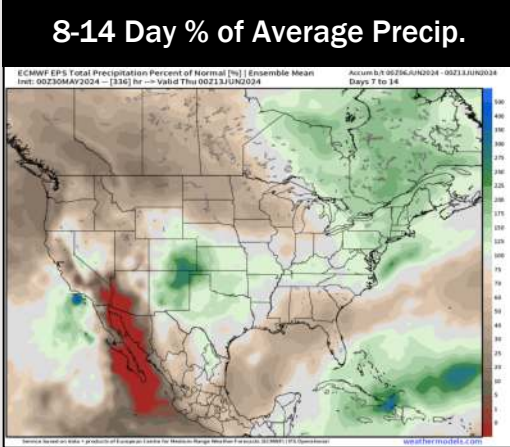
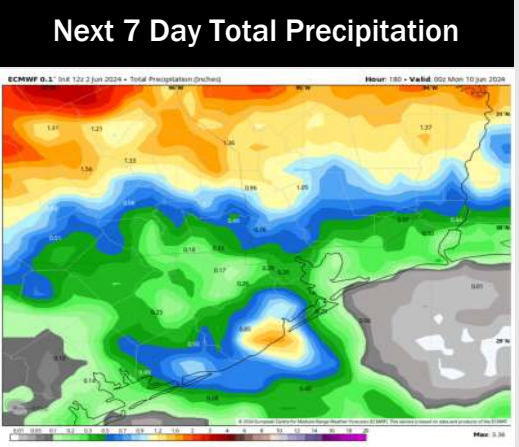
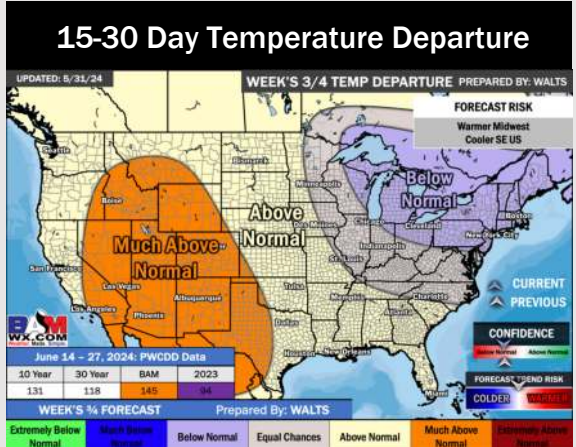
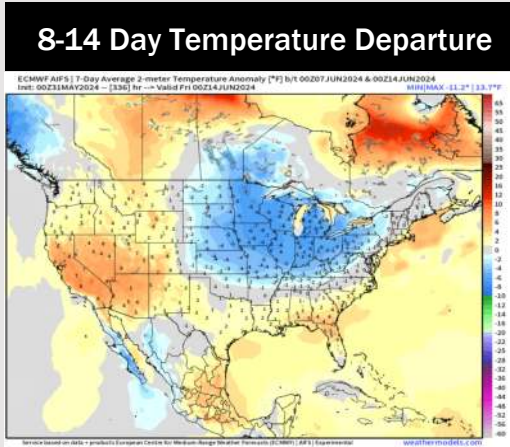
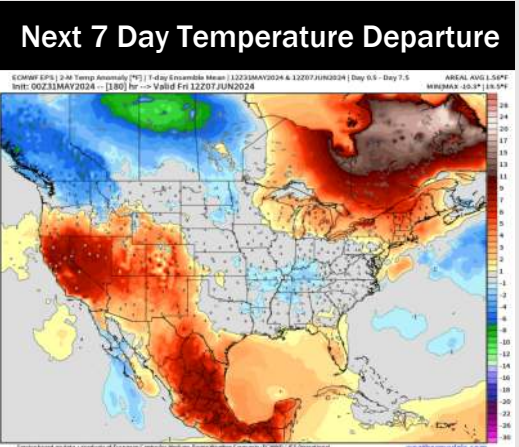
Wind Speed:  
4 AM CT



High Temps  
Wednesday



# Houston Pilots: 6/3/24



- Temps are expected to be near normal for the week 1 timeframe. A less active pattern is favored for the upcoming week with only sporadic rain chances favored.
- Near normal precipitation chances are at play during the week 2 timeframe. Temps are expected to be near to above normal.
- Below normal chances for precipitation are favored in the weeks 3/4 timeframe. Temperatures expected to be above normal for the weeks 3 and 4 timeframe.