

# Houston Pilots Forecast Package



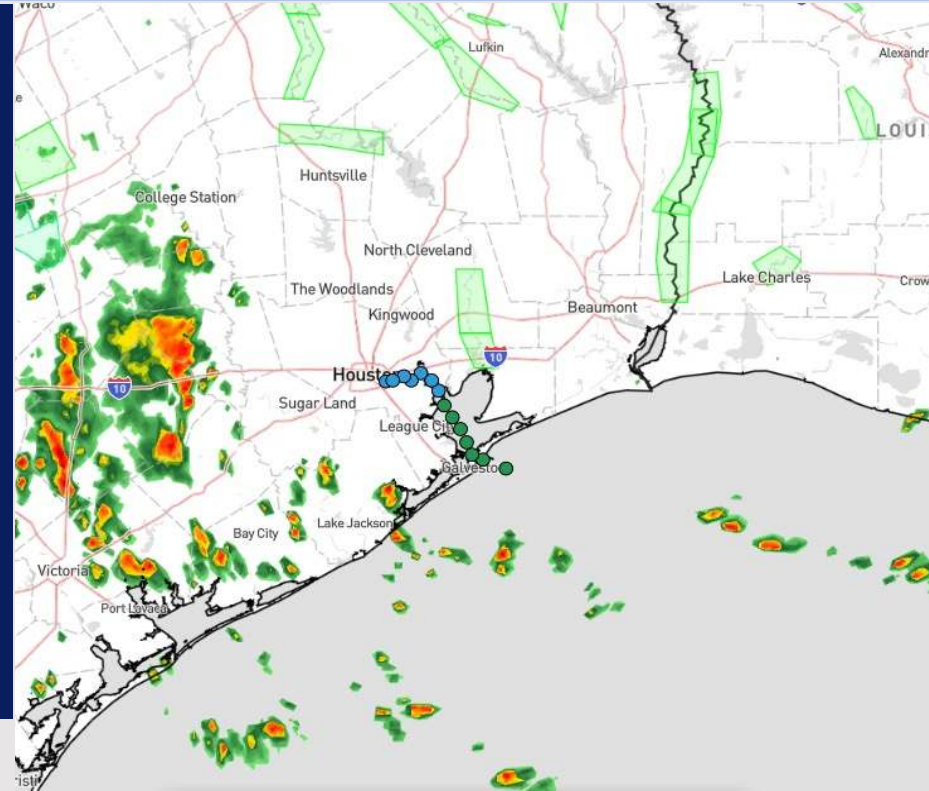
Updated: 1:00 PM CT

Wednesday, June 12, 2024

Forecaster: Hope Kleitsch

## Weather Headlines

- Winds to remain relatively calm throughout the rest of the week.
- Isolated showers possible through tomorrow afternoon.
- Check out the moderate/heavy rainfall risk map below outlining risks into early/mid next week.



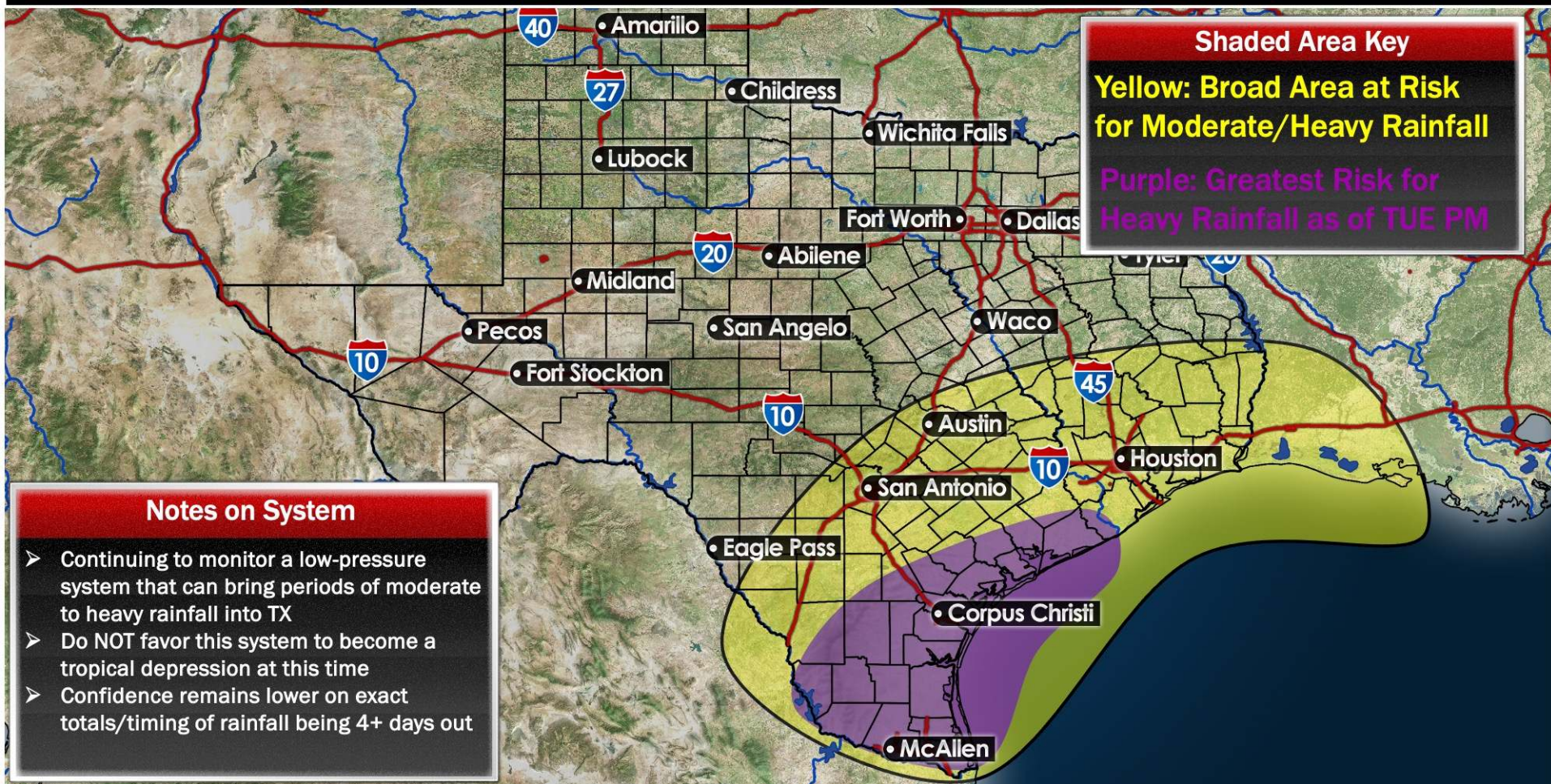
Current Radar: 12:50 PM CT



As always, please do not hesitate to reach out to us with any forecast questions via the chat option on Clarity or our on-call number, **(317)-560-8122** press **1** for forecast questions.



# Moderate to Heavy Rainfall Risk (6/16 – 6/19)



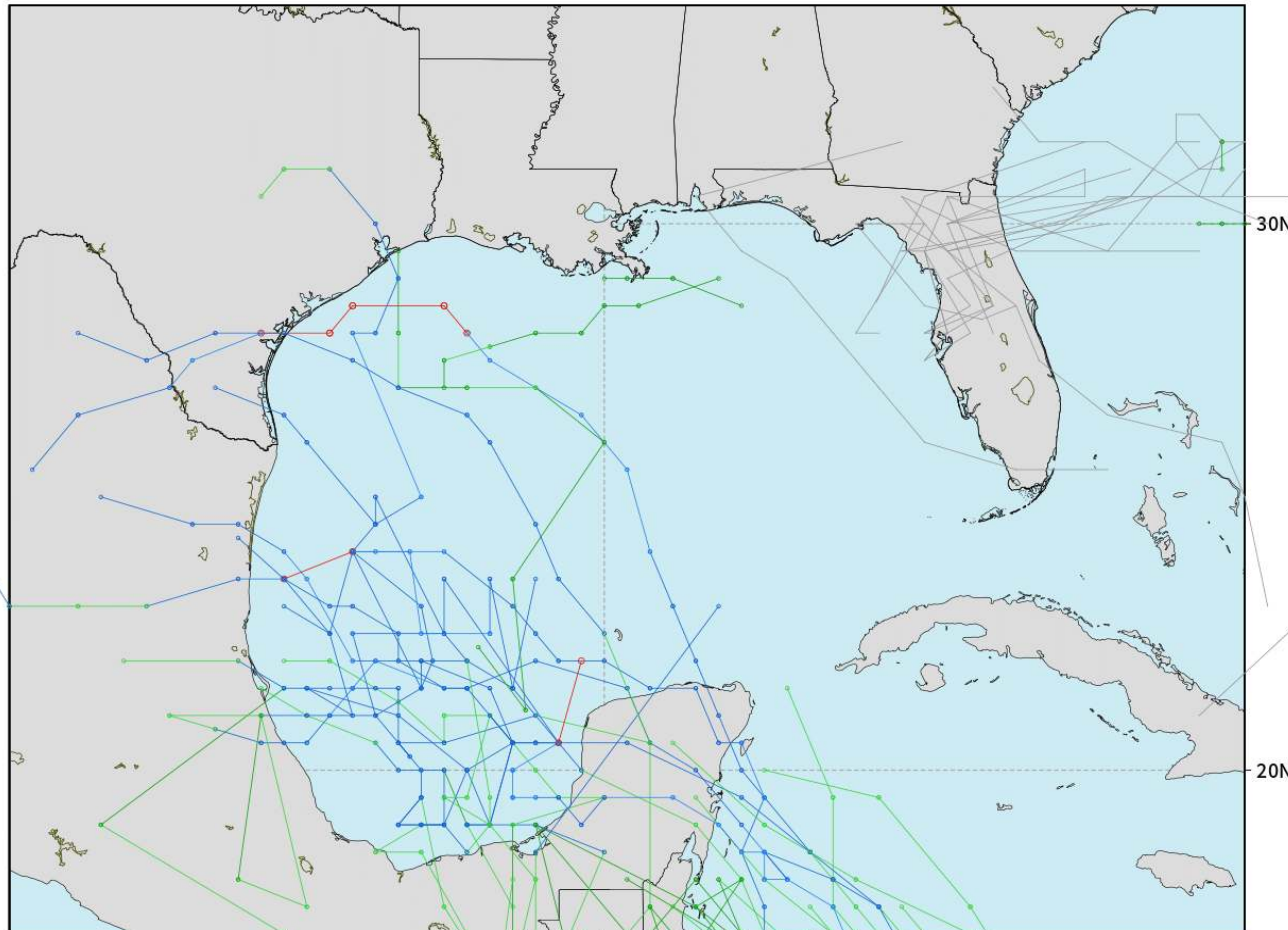


# Houston Pilots Tropical Update

## American Model Next 10 Days - Tropical Tracks

NOAA GEFSv12 | All Ensemble Cyclones +240 Hours  
INIT: 06Z12JUN2024 --> UNTIL 06Z22JUN2024

o-o > 1010 hPa  
o-o 1000 - 1010 hPa  
o-o 980 - 999 hPa  
o-o 960 - 979 hPa  
o-o 950 - 959 hPa  
o-o < 950 hPa



weathermodels.com

Monitoring low-end potential for a disorganized area of low pressure to work NE across the E Gulf of Mexico from 6/15- 6/19.

As of WED PM, moderate/heavy rainfall will be possible in the HOU area, however not favored to be a tropical depression

# Houston Pilots Visibility Chart (miles)



## Forecast Confidence



Time	Wed 12pm	Wed 1pm	Wed 2pm	Wed 3pm	Wed 4pm	Wed 5pm	Wed 6pm	Wed 7pm	Wed 8pm	Wed 9pm	Wed 10pm	Wed 11pm	Thu 12am	Thu 1am	Thu 2am	Thu 3am	Thu 4am	Thu 5am	Thu 6am	Thu 7am	Thu 8am	Thu 9am	Thu 10am	Thu 11am
610 Bridge	10	10	10	10	10	10	10	10	10	10	10	10	10	10	10	10	10	10	10	10	10	10	10	10
Kinder 1	10	10	10	10	10	10	10	10	10	10	10	10	10	10	10	10	10	10	10	10	10	10	10	10
Greens Bayou	10	10	10	10	10	10	10	10	10	10	10	10	10	10	10	10	10	10	10	10	10	10	10	10
Shell Crude	10	10	10	10	10	10	10	10	10	10	10	10	10	10	10	10	10	10	10	10	10	10	10	10
Lynchburg Ferries	10	10	10	10	10	10	10	10	10	10	10	10	10	10	10	10	10	10	10	10	10	10	10	10
Exxon 3	10	10	10	10	10	10	10	10	10	10	10	10	10	10	10	10	10	10	10	10	10	10	10	10
Morgans Point	10	10	10	10	10	10	10	10	10	10	10	10	10	10	10	10	10	10	10	10	10	10	10	10
75/76	10	10	10	10	10	10	10	10	10	10	10	10	10	10	10	10	10	10	10	10	10	10	10	10
63/64	10	10	10	10	10	10	10	10	10	10	10	10	10	10	10	10	10	10	10	10	10	10	10	10
51/52	10	10	10	10	10	10	10	10	10	10	10	10	10	10	10	10	10	10	10	10	10	10	10	10
37/38	10	10	10	10	10	10	10	10	10	10	10	10	10	10	10	10	10	10	10	10	10	10	10	10
25/26	10	10	10	10	10	10	10	10	10	10	10	10	10	10	10	10	10	10	10	10	10	10	10	10
11/12	10	10	10	10	10	10	10	10	10	10	10	10	10	10	10	10	10	10	10	10	10	10	10	10
1 & 2 Bravo	10	10	10	10	10	10	10	10	10	10	10	10	10	10	10	10	9	10	10	9	10	10	10	10

**NOTE: This is automated data that may/may not agree with the official BAM thinking that's found on the daily slides or special visibility report slides. This data should be used as a guide only**

# Houston Pilots Wind Chart



## Forecast Confidence



Sustained wind 13 Knots  
Gusts 18 Knots  
Wind from the N

## Example

WS: 13  
G:18  
N

Time Knots	Wed 12pm	Wed 1pm	Wed 2pm	Wed 3pm	Wed 4pm	Wed 5pm	Wed 6pm	Wed 7pm	Wed 8pm	Wed 9pm	Wed 10pm	Wed 11pm	Thu 12am	Thu 1am	Thu 2am	Thu 3am	Thu 4am	Thu 5am	Thu 6am	Thu 7am	Thu 8am	Thu 9am	Thu 10am	Thu 11am
610 Bridge	4	4	4	4	5	5	5	5	3	3	2	1	1	1	1	1	1	1	1	1	2	2	3	
	9	9	9	9	9	9	8	8	7	6	5	4	3	3	3	3	3	3	4	4	5	5	6	
Kinder 1	4	4	4	5	5	5	5	4	3	3	2	1	1	1	1	1	1	1	1	1	2	2	3	
	9	9	9	9	9	9	8	8	7	6	5	4	3	3	3	3	3	3	4	4	5	5	6	
Greens Bayou	4	4	4	5	5	4	4	4	3	3	2	1	1	1	1	1	1	1	1	1	2	2	3	
	9	9	9	9	9	9	8	8	6	6	5	4	3	3	3	3	3	3	4	4	4	5	6	
Shell Crude	4	4	4	5	5	5	4	4	3	3	2	1	1	1	1	1	1	1	1	2	1	2	3	
	9	9	9	9	8	9	8	8	6	6	5	4	3	3	3	3	3	3	4	5	4	5	6	
Lynchburg Ferries	4	4	4	4	4	4	4	3	3	2	1	1	1	1	1	1	1	1	1	1	1	2	3	
	9	9	9	9	8	9	8	7	6	5	4	4	3	3	2	2	3	3	3	4	4	4	6	
Exxon 3	5	5	5	5	5	5	5	5	5	4	3	3	3	3	2	2	3	3	3	3	3	3	3	
	9	10	10	10	10	10	9	8	7	6	6	5	5	4	4	4	4	5	5	6	5	6	6	
Morgans Point	5	5	5	5	6	5	5	5	5	4	3	3	3	3	2	2	3	3	3	3	3	3	4	
	9	10	9	10	10	10	9	8	7	6	6	5	5	5	4	4	4	5	5	6	5	6	7	
75/76	5	5	5	5	5	5	5	6	5	5	4	3	3	3	3	3	3	3	3	4	4	5	4	
	10	10	10	10	10	10	9	8	8	7	6	6	5	5	5	5	5	5	6	6	6	6	7	
63/64	5	5	5	5	5	5	5	5	5	5	4	4	3	3	3	3	3	3	3	4	4	4	5	
	10	10	9	9	9	9	8	8	8	7	6	6	6	5	5	5	5	5	6	6	6	6	7	
51/52	5	5	5	5	5	5	5	5	5	5	4	4	3	3	3	3	3	3	3	4	4	4	5	
	10	10	9	9	9	9	8	8	8	6	6	6	6	6	5	5	5	5	6	6	6	6	7	
37/38	5	5	5	5	5	5	5	5	5	5	4	4	3	3	3	3	3	3	3	4	4	4	5	
	10	9	9	9	9	9	8	8	7	6	6	6	6	6	5	5	5	5	5	6	6	6	7	
25/26	5	6	5	5	5	5	5	5	5	5	4	4	3	3	3	3	3	3	3	3	3	4	5	
	9	9	9	8	8	9	8	8	7	6	6	6	6	6	5	5	5	5	5	6	5	6	7	
11/12	6	6	5	5	5	5	5	5	5	4	4	3	3	3	3	3	3	3	3	3	3	4	5	
	9	10	9	8	8	9	8	8	7	6	6	6	6	6	5	5	5	5	5	6	5	6	7	
1 & 2 Bravo	6	5	5	5	5	5	5	5	5	5	5	4	4	4	3	3	3	3	3	3	4	5	5	
	9	9	8	8	8	8	8	8	8	7	6	6	6	6	6	6	6	6	5	5	6	6	7	

**NOTE: This is automated data that may/may not agree with the official BAM thinking that's found on the daily slides. This data should be used as a guide only.**

# Houston Pilots: Wed. 6/12/2024



## Forecast Discussion

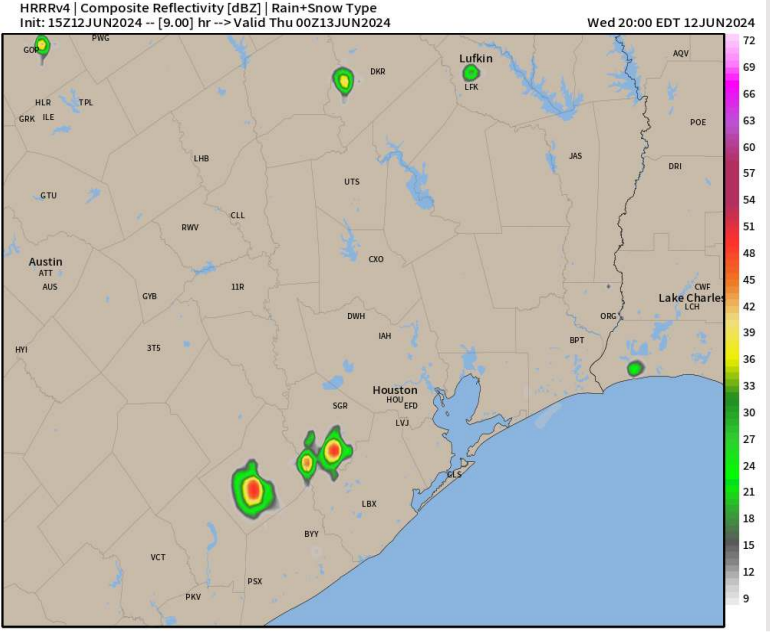
**Precip:** Hit/miss thunderstorms/showers (10%) possible until ~5 PM. Dry conditions are favored after 5 PM and through the overnight as chances move to the West. Not anticipating any severe risk with these storms.

**Wind:** Winds will continue to flow out of the SE throughout the rest of the PM. **N of Morgan's Point:** Winds at 4-8 kts throughout the overnight. **S of Morgan's Point:** Winds at 4-10 kts throughout the rest of the day.

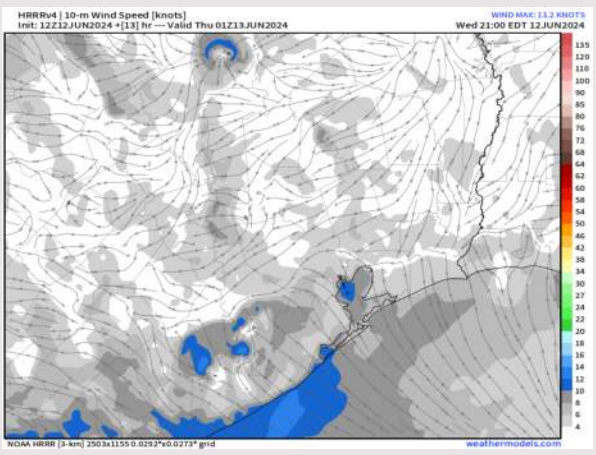
**Low Temps:** **N of Morgan's Point:** Upper 70s F **S of Morgan's Point:** Lower 80s F.

**Visibility:** Not favoring any visibility concerns for today.

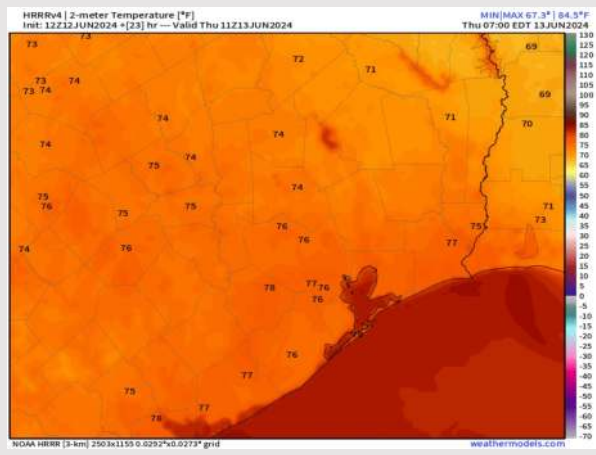
## Precip Image: 8 PM CT



Wind Speed:  
9 PM CT



Low Temps  
THU AM





## Forecast Discussion

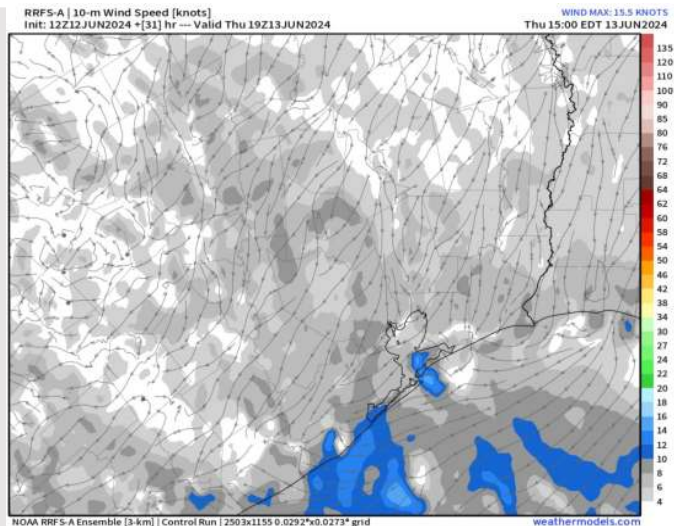
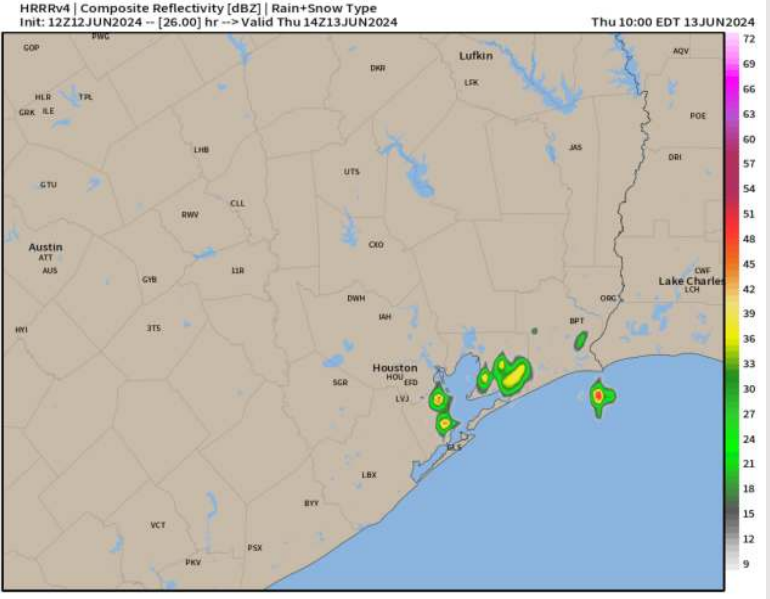
**Precip:** Isolated rain chances possible between ~9 AM – 1 PM. All precip chances clear out by the evening ~5 PM.

**Wind:** Winds to become variable just after 1 AM THU, settling out of the NE by 8 AM. Winds will then gradually move clockwise throughout the day, settling out of the SE by 6 PM. **N of Morgan's Point:** Favoring winds at 2-10kts throughout THU. **S of Morgan's Point:** Favoring winds at 2-7 kts through 4 PM before increasing to 5-12 kts the rest of the day.

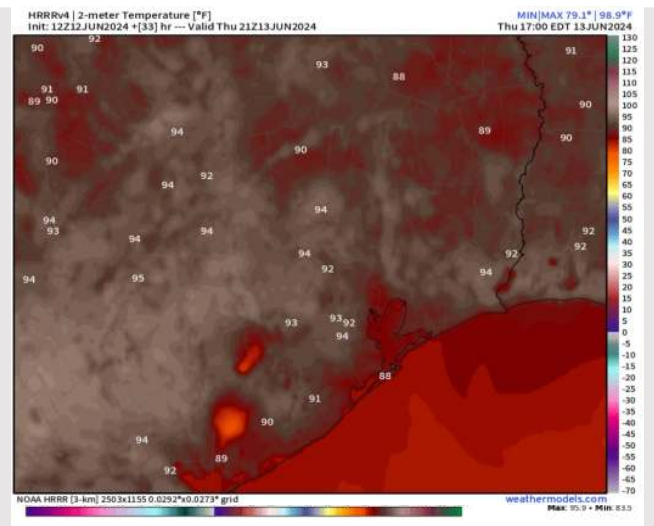
**High Temps:** **N of Morgan's Point:** Low 90's F. **S of Morgan's Point:** Near 90 F.

**Visibility:** A very low end risk for patchy fog THU AM, however not favored.

## Precip Image: 9 AM CT



Wind Speed  
2 PM CT



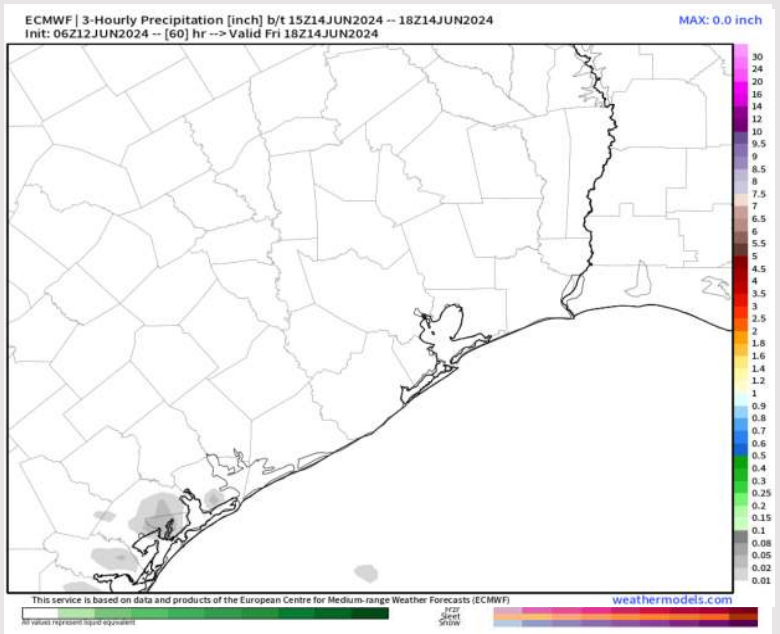
High Temps  
Thursday

# Houston Pilots: Fri. 6/14/2024

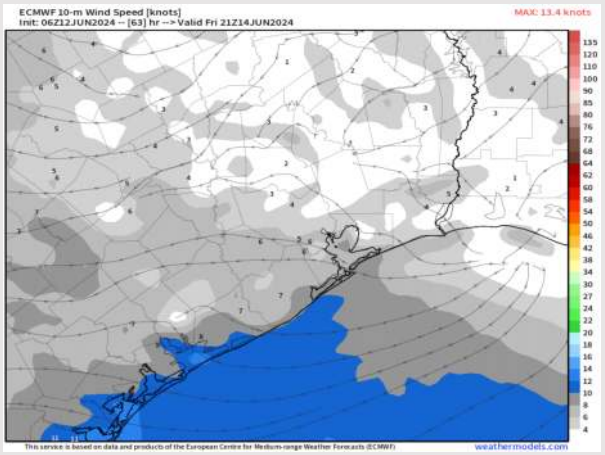
## Forecast Discussion

- Precip:** Dry conditions favored for Friday.
- Wind:** Variable winds will begin after midnight before winds settle out of the N/NW by 8 AM. These winds will gradually work clockwise throughout the day, settling out of the SE by 5 PM. **N of Morgan's Point:** Winds at 2-7 kts throughout the day on Friday. **S of Morgan's Point:** Winds at 4-9 kts throughout the day.
- High Temps:** **N of Morgan's Point:** Upper 80s F to lower 90s F. **S of Morgan's Point:** Near 90 F.
- Visibility:** A low end patchy fog risk for FRI AM, however not favored.

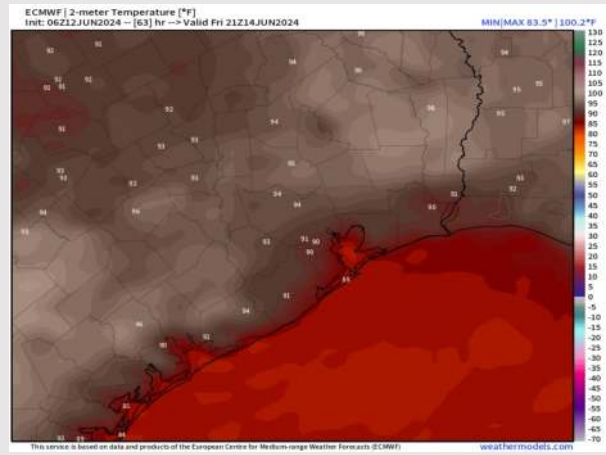
## Precip Image: 1 PM CT



Wind Speed:  
4 PM CT



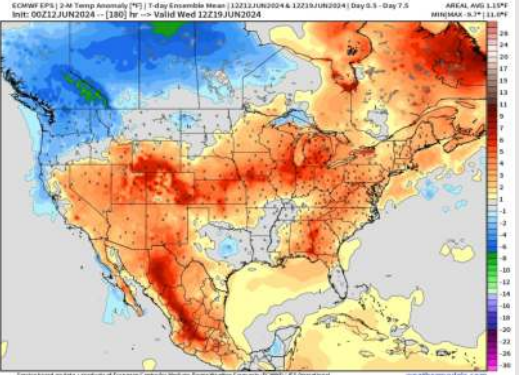
High Temps  
Friday



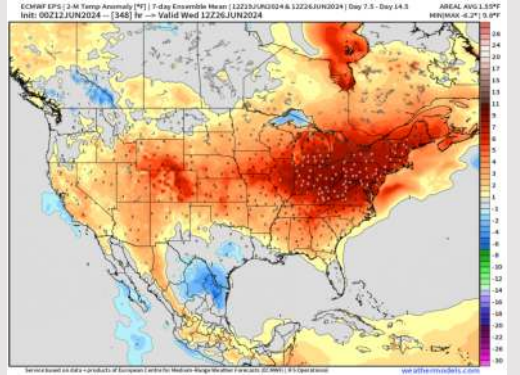


# Houston Pilots: 6/11/24

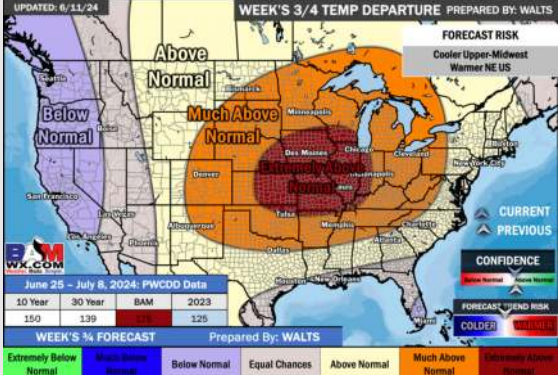
**Next 7 Day Temperature Departure**



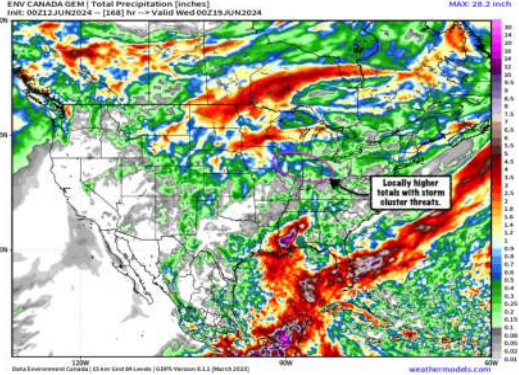
**8-14 Day Temperature Departure**



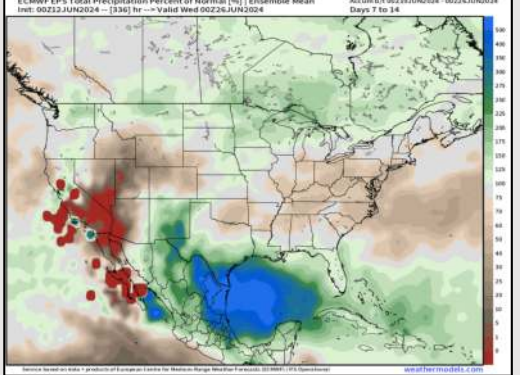
**15-30 Day Temperature Departure**



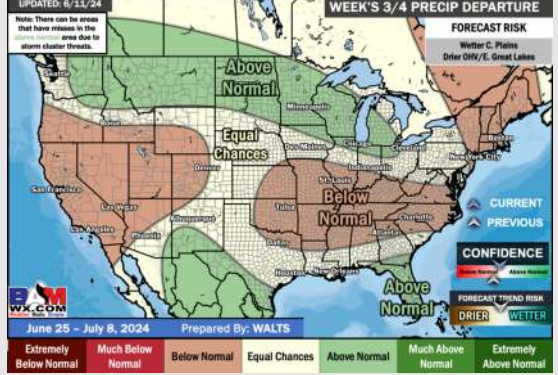
**Next 7 Day Total Precipitation**



**8-14 Day % of Average Precip.**



**15-30 Day % of Average Precip.**



- Temps are expected to be near normal for the week 1 timeframe. Monitoring risk for moderate/heavy rain beginning next MON but lower confidence on exact timing/placement (more details on custom slide above).
- Slightly above normal precipitation chances are at play during the week 2 timeframe. Temps are expected to be near normal for week 2.
- Near normal chances for precipitation and temperatures are favored in the weeks 3/4 timeframe.