

Houston Pilots Forecast Package

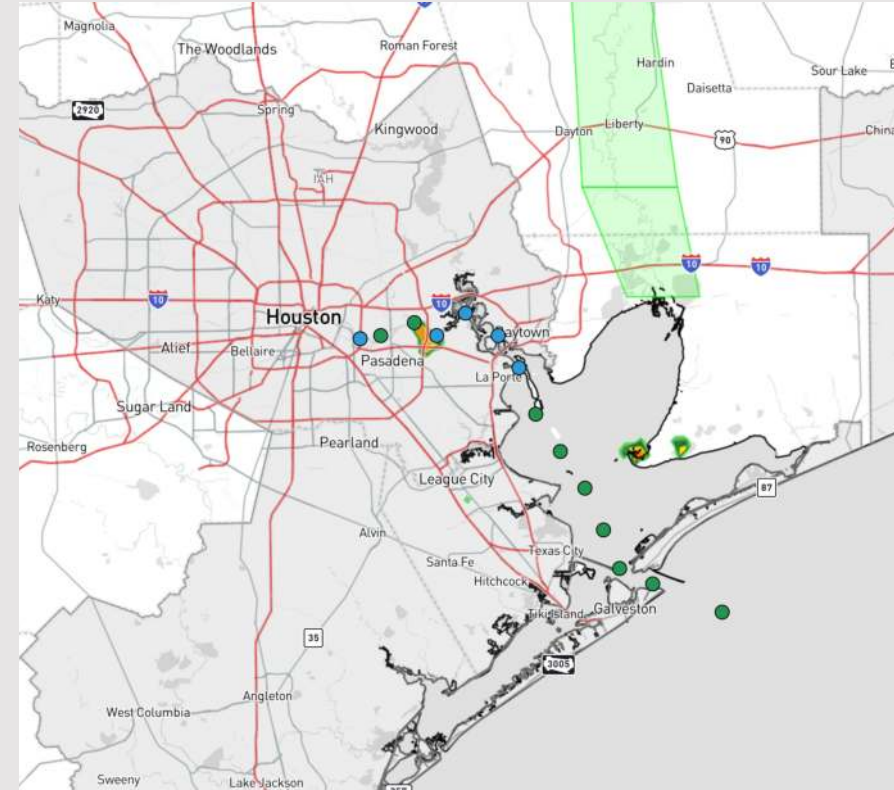


Updated: 12:45 PM CT
Tuesday, June 11, 2024

Forecaster: Alyssa Elliott

Weather Headlines

- Winds to remain relatively calm throughout the next few days with a couple isolated gusts near 25-35 kts under sporadic storms. The strongest storms may produce gusts up towards 40 kts.
- Expecting sporadic showers and storms to hang around the Houston/Galveston area through WED PM.
- **No tropical activity is favored to impact the HOU area over the next week**



Current Radar: 12:30 PM CT



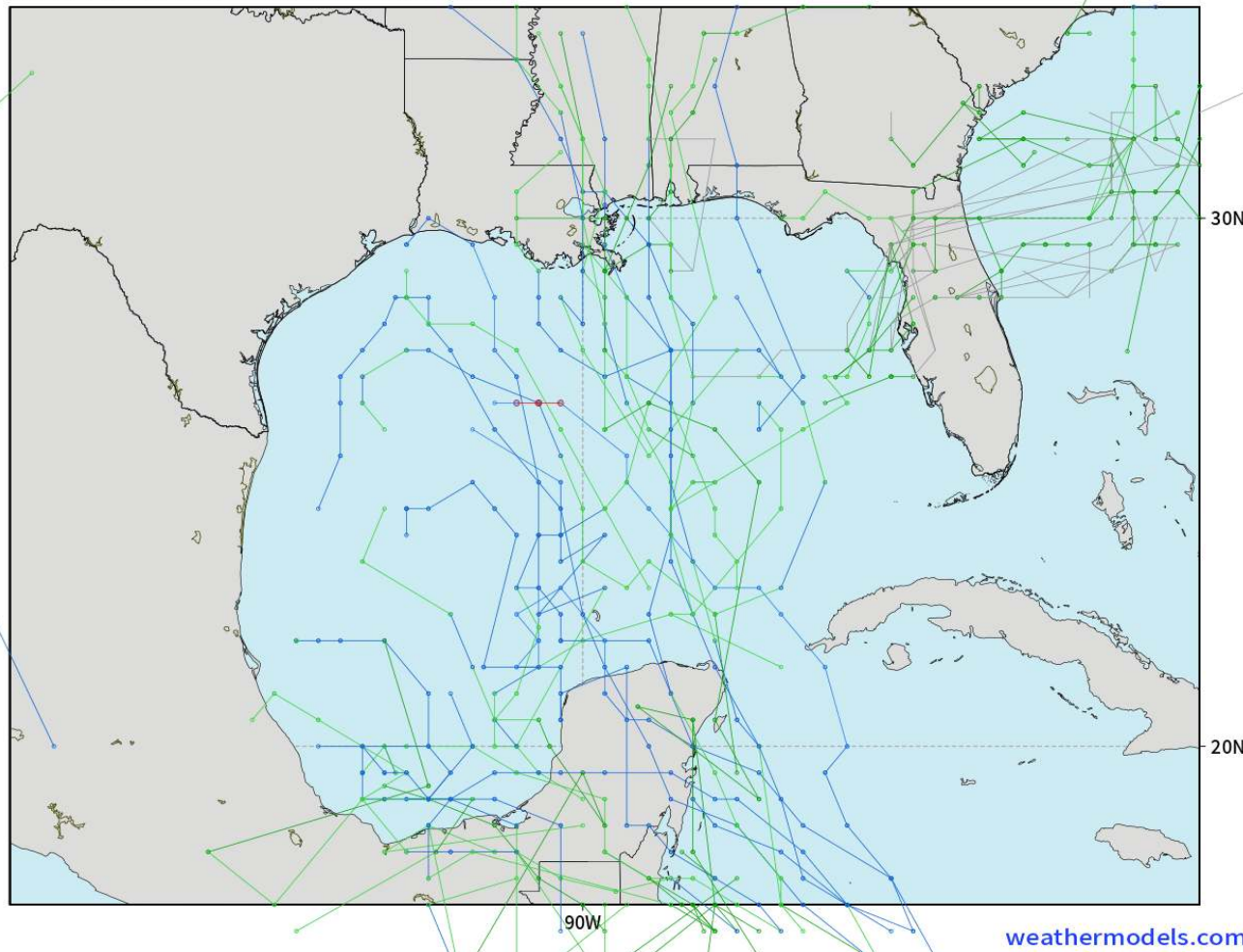
As always, please do not hesitate to reach out to us with any forecast questions via the chat option on Clarity or our on-call number, **(317)-560-8122** press **1** for forecast questions.

Houston Pilots Tropical Update

American Model Next 10 Days - Tropical Tracks

NOAA GEFSv12 | All Ensemble Cyclones +240 Hours
INIT: 06Z11JUN2024 --> UNTIL 06Z21JUN2024

o-o > 1010 hPa
o-o 1000 - 1010 hPa
o-o 980 - 999 hPa
o-o 960 - 979 hPa
o-o 950 - 959 hPa
o-o < 950 hPa



Monitoring low-end potential for a disorganized area of low pressure to work NE across the E Gulf of Mexico from 6/14- 6/18.

As of TUE PM, impacts are not favored for the Houston Area.

Houston Pilots Visibility Chart (miles)



Forecast Confidence



Time	Tue 1pm	Tue 2pm	Tue 3pm	Tue 4pm	Tue 5pm	Tue 6pm	Tue 7pm	Tue 8pm	Tue 9pm	Tue 10pm	Tue 11pm	Wed 12am	Wed 1am	Wed 2am	Wed 3am	Wed 4am	Wed 5am	Wed 6am	Wed 7am	Wed 8am	Wed 9am	Wed 10am	Wed 11am	Wed 12pm
610 Bridge	10	10	10	10	10	10	10	10	10	10	10	10	10	10	10	10	10	10	10	10	10	10	10	10
Kinder 1	10	10	10	10	10	10	10	10	10	10	10	10	10	10	10	10	10	10	10	10	10	10	10	10
Greens Bayou	10	10	10	10	10	10	10	10	10	10	10	10	10	10	10	10	10	10	10	10	10	10	10	10
Shell Crude	10	10	10	10	10	10	10	10	10	10	10	10	10	10	10	10	10	10	10	10	10	10	10	10
Lynchburg Ferries	10	10	10	10	10	10	10	10	10	10	10	10	10	10	10	10	10	10	10	10	10	10	10	10
Exxon 3	10	10	10	10	10	10	10	10	10	10	10	10	10	10	10	10	10	10	10	10	10	10	10	10
Morgans Point	10	10	10	10	10	10	10	10	10	10	10	10	10	10	10	10	10	10	10	10	10	10	10	10
75/76	10	10	10	10	10	10	10	10	10	10	10	10	10	10	10	10	10	10	10	10	10	10	10	10
63/64	10	10	10	10	10	10	10	10	10	10	10	10	10	10	10	10	10	10	10	10	10	10	10	10
51/52	10	10	10	10	10	10	10	10	10	10	10	10	10	10	10	10	10	10	10	10	10	10	10	10
37/38	10	10	10	10	10	10	10	10	10	10	10	10	10	10	10	10	10	10	10	10	10	10	10	10
25/26	10	10	10	10	10	10	10	10	10	10	10	10	10	10	10	10	10	10	10	10	10	10	10	9
11/12	10	10	10	10	10	10	10	10	10	10	10	10	10	10	10	10	10	10	10	10	10	10	10	9
1 & 2 Bravo	10	10	10	10	10	10	10	10	10	10	10	10	10	10	10	10	10	10	10	10	10	10	10	9

NOTE: This is automated data that may/may not agree with the official BAM thinking that's found on the daily slides or special visibility report slides. This data should be used as a guide only

Houston Pilots Wind Chart



Forecast Confidence



Sustained wind 13 Knots
Gusts 18 Knots
Wind from the N

Example

WS: 13
G:18
N

Time Knots	Tue 1pm	Tue 2pm	Tue 3pm	Tue 4pm	Tue 5pm	Tue 6pm	Tue 7pm	Tue 8pm	Tue 9pm	Tue 10pm	Tue 11pm	Wed 12am	Wed 1am	Wed 2am	Wed 3am	Wed 4am	Wed 5am	Wed 6am	Wed 7am	Wed 8am	Wed 9am	Wed 10am	Wed 11am	Wed 12pm
610 Bridge	3	4	4	5	5	5	5	4	3	3	2	2	1	1	1	2	2	3	3	3	3	4	4	
	7	8	8	10	10	9	10	8	7	6	5	4	4	4	4	5	5	6	6	7	6	7	8	8
Kinder 1	3	4	5	5	5	5	5	4	3	3	2	2	1	1	1	2	2	3	3	3	3	4	4	
	8	8	9	10	10	9	9	8	7	6	5	4	4	4	4	5	5	6	6	7	6	7	8	8
Greens Bayou	4	4	5	5	5	5	5	4	3	3	2	1	1	1	1	2	2	3	3	3	3	4	4	
	8	8	9	10	9	8	9	7	6	6	5	4	4	4	4	5	5	6	6	6	7	8	8	
Shell Crude	4	4	5	5	5	5	5	4	3	3	2	2	1	1	1	2	2	3	3	3	3	3	4	
	8	8	8	9	9	8	9	7	6	6	5	4	4	4	4	5	5	6	7	6	7	8	8	
Lynchburg Ferries	3	4	4	5	5	4	4	3	3	2	2	1	1	1	1	2	2	2	3	3	3	3	3	
	8	8	8	9	9	8	8	7	6	6	4	4	4	4	4	5	5	6	6	6	7	8	8	
Exxon 3	5	5	5	6	6	6	6	5	5	5	4	3	3	3	3	4	4	5	5	5	5	5	5	
	9	9	9	11	11	9	10	8	7	7	6	5	5	5	5	6	6	7	8	8	8	8	9	
Morgans Point	5	5	6	6	6	6	6	5	5	5	4	3	3	3	3	4	4	5	5	5	5	5	5	
	9	9	9	11	11	9	10	8	7	7	6	5	5	5	5	6	6	7	8	8	8	8	9	
75/76	5	5	5	6	6	6	6	6	5	5	5	4	4	4	4	5	5	6	6	6	6	6	6	
	9	9	10	11	11	9	10	8	8	7	7	6	6	6	6	7	8	9	9	9	9	9	9	
63/64	5	5	5	5	5	5	6	5	5	5	5	5	5	4	5	5	5	5	6	6	5	5	5	
	8	9	9	10	10	9	9	8	7	7	6	6	6	6	6	7	7	9	9	8	9	8	9	
51/52	5	5	5	5	5	5	5	5	5	5	5	5	5	4	5	5	5	5	6	6	5	5	5	
	9	9	9	10	10	8	9	8	7	7	7	7	7	7	6	6	7	7	8	9	8	9	9	
37/38	5	5	5	5	5	5	5	5	5	5	5	5	5	4	5	5	5	5	5	5	5	5	5	
	8	8	8	10	9	8	9	8	7	7	7	7	7	7	6	6	7	7	8	8	8	9	9	
25/26	5	5	5	5	5	5	5	5	5	5	5	5	5	4	4	5	5	5	5	5	5	5	5	
	8	8	8	9	9	8	8	7	7	7	7	7	7	7	6	6	7	7	8	8	8	9	9	
11/12	5	5	5	5	5	5	5	5	5	5	4	4	4	4	4	4	4	4	5	5	5	5	5	
	8	8	8	9	8	8	8	7	7	7	7	7	7	6	6	6	7	7	7	8	8	8	9	
1 & 2 Bravo	5	5	5	5	5	5	5	5	5	5	5	5	5	5	5	5	5	5	5	5	6	6	6	
	7	8	8	8	8	8	8	7	7	8	8	8	8	7	7	7	7	7	8	8	9	9	9	

NOTE: This is automated data that may/may not agree with the official BAM thinking that's found on the daily slides. This data should be used as a guide only.

Houston Pilots: Tue. 6/11/2024



Forecast Discussion

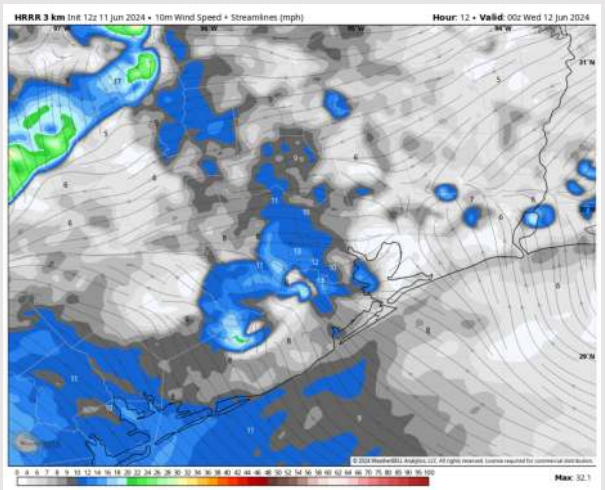
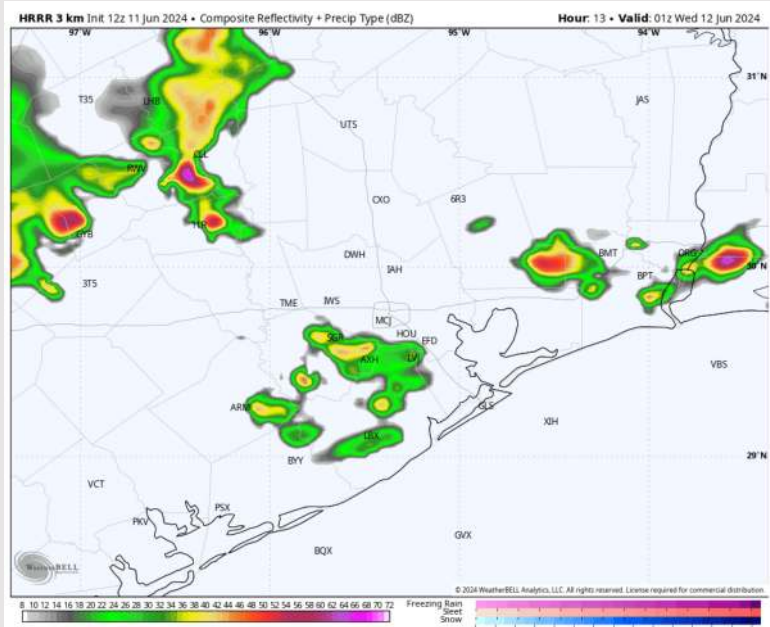
Precip: Isolated (10%) showers / storms possible for all stations through 3 PM. After 3 PM, showers/storms increase in coverage (20-30%) lasting through ~8 - 9 PM. Conditions clears up after 9 PM before a broken line of showers arrives around 12 AM. Better risks to be N of Morgan's Point. **Any one of these storms will have the potential to produce lightning, hail and isolated gusts 35-40 kts embedded within the strongest cells.**

Wind: Variable winds are continuing to shift out of the SE this PM. **N of Morgan's Point:** Winds will be at 10-15 kts this PM, calming to 2 - 7 kts after 7 PM. **S of Morgan's Point:** Winds at 13-18 kts through 8 PM then winds will again calm to 2 - 7 kts for the remainder of the PM.

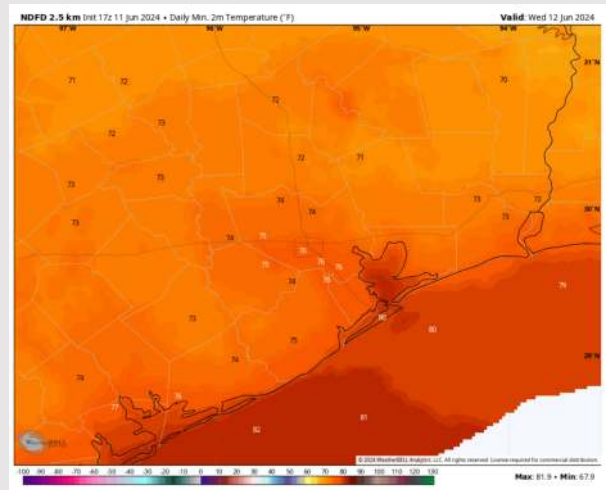
Low Temps: **N of Morgan's Point:** Mid 70s F. **S of Morgan's Point:** Low to Mid 80s F.

Visibility: Not favoring visibility concerns for the PM.

Precip Image: 8 PM CT



Wind Speed:
7 PM CT



Low Temps
WED AM

Houston Pilots: Wed. 6/12/2024



Forecast Discussion

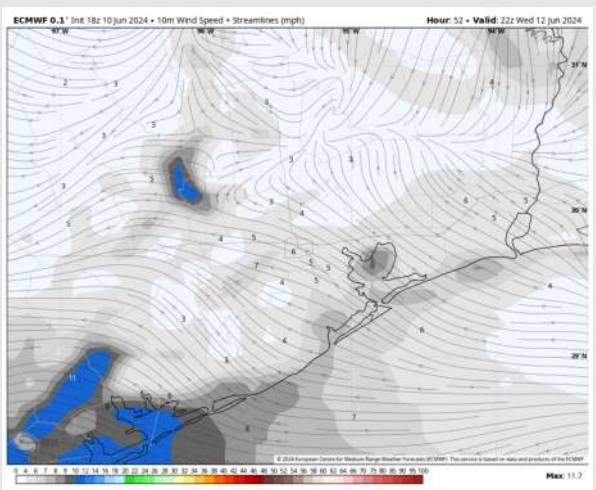
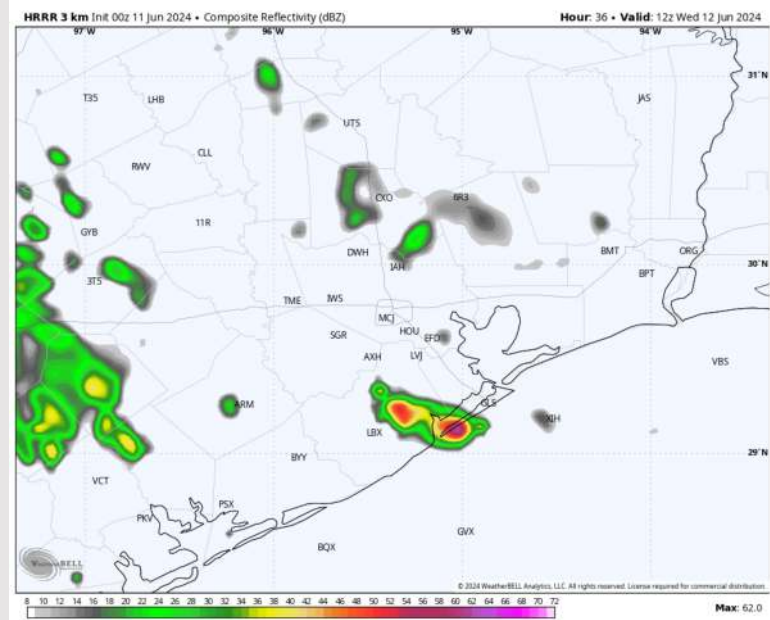
Precip: Hit/miss thunderstorms/showers (20%) possible throughout the morning and until ~5 PM. Bulk of chances favored to remain to the W of all stations. **Isolated lightning strikes will be the main threat with these, isolated pockets of 20-25 kts wind gusts possible!**

Wind: Winds variable in direction through 6 AM, then gradually shifting from the NE to out of the SE through 5 PM. SE winds then continue after that time. **N of Morgan's Point:** Winds at 3-8 kts throughout Wednesday. **S of Morgan's Point:** Winds at 5-10 kts throughout the day.

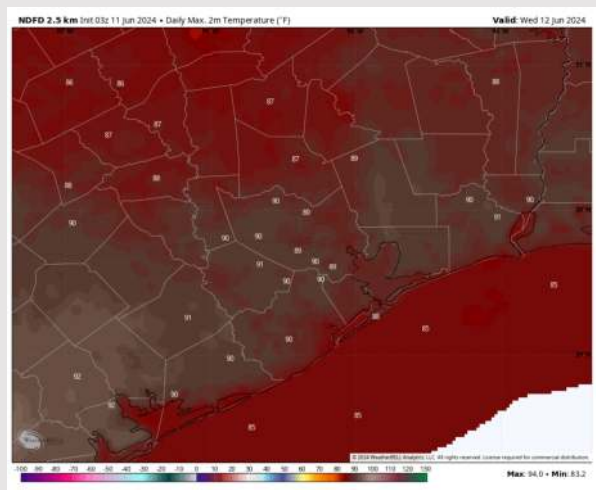
High Temps: **N of Morgan's Point:** Near 90 F **S of Morgan's Point:** Upper 80s F.

Visibility: Not favoring any visibility concerns for Wednesday.

Precip Image: 7 AM CT



Wind Speed:
5 PM CT



High Temps
Wednesday

Houston Pilots: Thu. 6/13/2024



Forecast Discussion

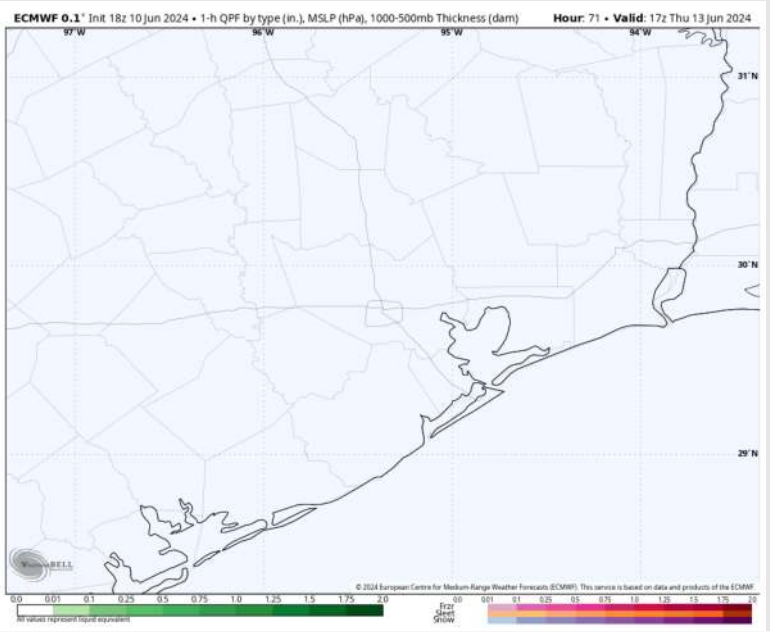
Precip: Favoring dry conditions for THU as rain chances will look to remain to the W of Stations.

Wind: Winds to become variable just after 1 AM THU, settling out of the NE by 8 AM. Winds will then gradually move clockwise throughout the day, settling out of the SE by 7 PM. **N of Morgan's Point:** Favoring winds at 2-7kts throughout THU. **S of Morgan's Point:** Favoring winds at 2-7 kts through 4 PM before increasing to 5-10 kts the rest of the day.

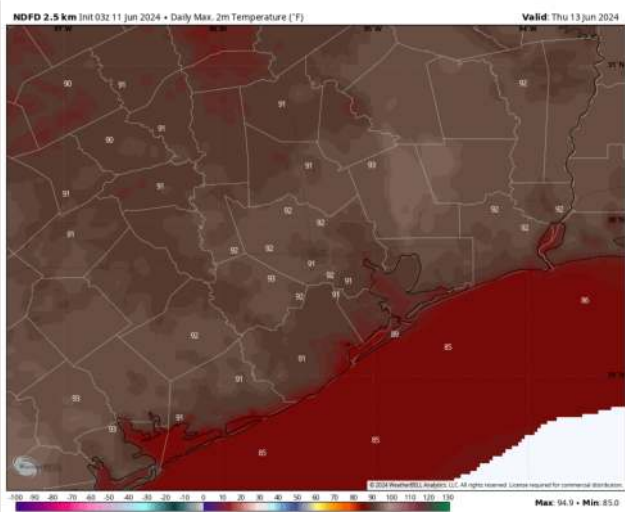
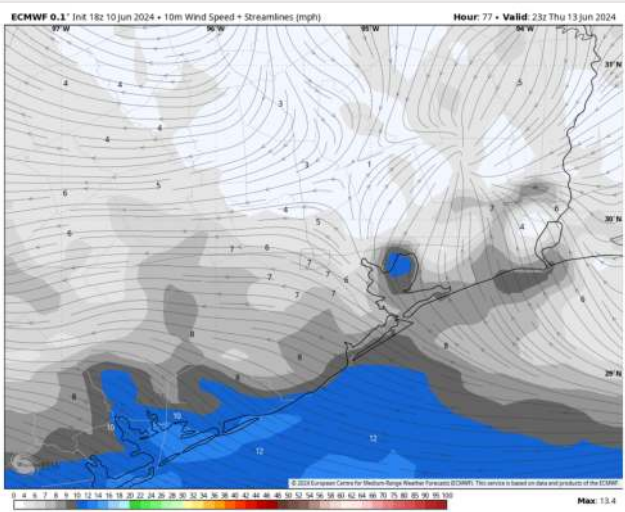
High Temps: **N of Morgan's Point:** Low 90's F. **S of Morgan's Point:** Upper 80s F.

Visibility: Not anticipating any fog risks for Thursday.

Precip Image: 12 PM CT



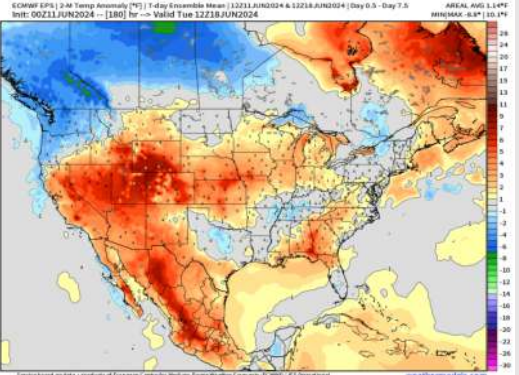
Wind Speed
6 PM CT



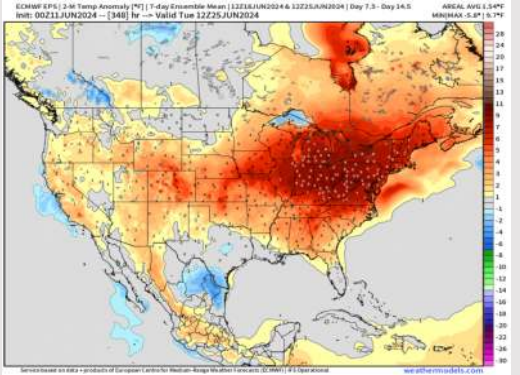
High Temps
Thursday

Houston Pilots: 6/10/24

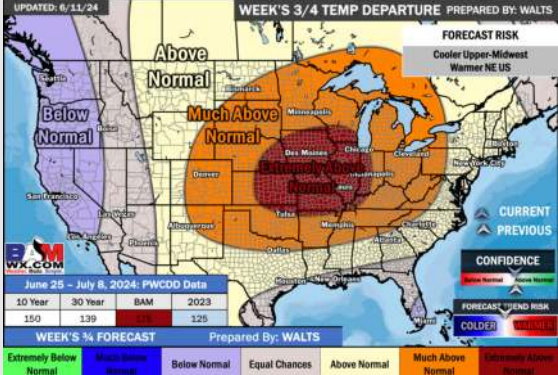
Next 7 Day Temperature Departure



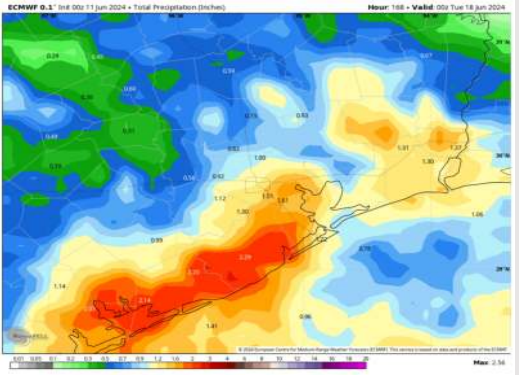
8-14 Day Temperature Departure



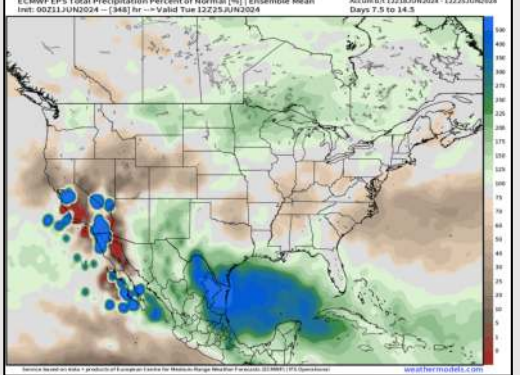
15-30 Day Temperature Departure



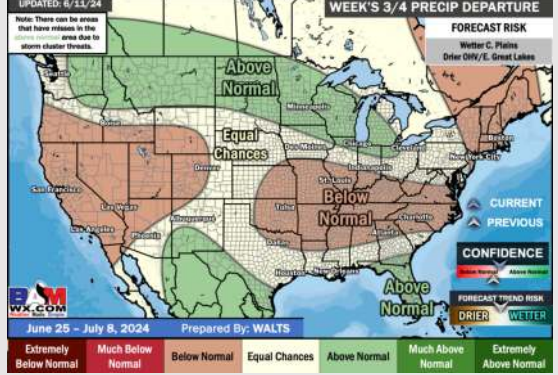
Next 7 Day Total Precipitation



8-14 Day % of Average Precip.



15-30 Day % of Average Precip.



- Temps are expected to be near normal for the week 1 timeframe. Sporadic showers/storms through WED before a drier weekend. Monitoring risk for moderate/heavy rain beginning next MON but lower confidence on exact timing/placement.
- Slightly above normal precipitation chances are at play during the week 2 timeframe. Temps are expected to be near normal for week 2.
- Near normal chances for precipitation and temperatures are favored in the weeks 3/4 timeframe.