

Houston Pilots Forecast Package

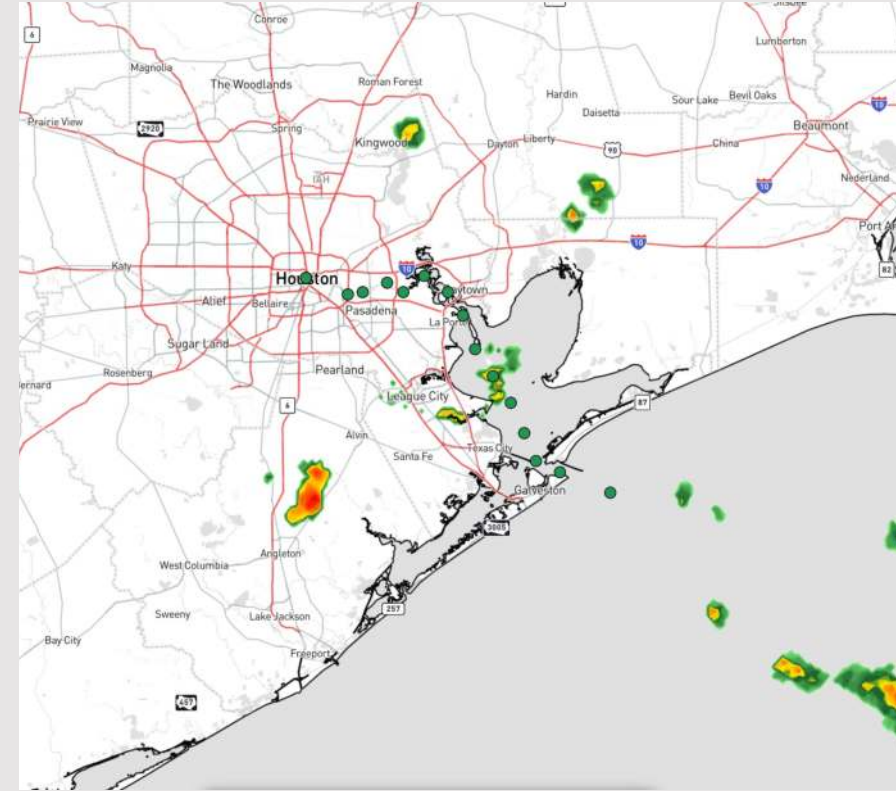


Updated: 1:30 PM CT
Sunday, June 9, 2024

Forecaster: Xander Lowry

Weather Headlines

- Winds to remain relatively calm throughout the weekend and into next week
- Favoring mostly dry conditions over the next few days with only sporadic light showers possible.
- **Updated Hurricane Season Outlook included below!!**



Current Radar: 1:30 PM CT



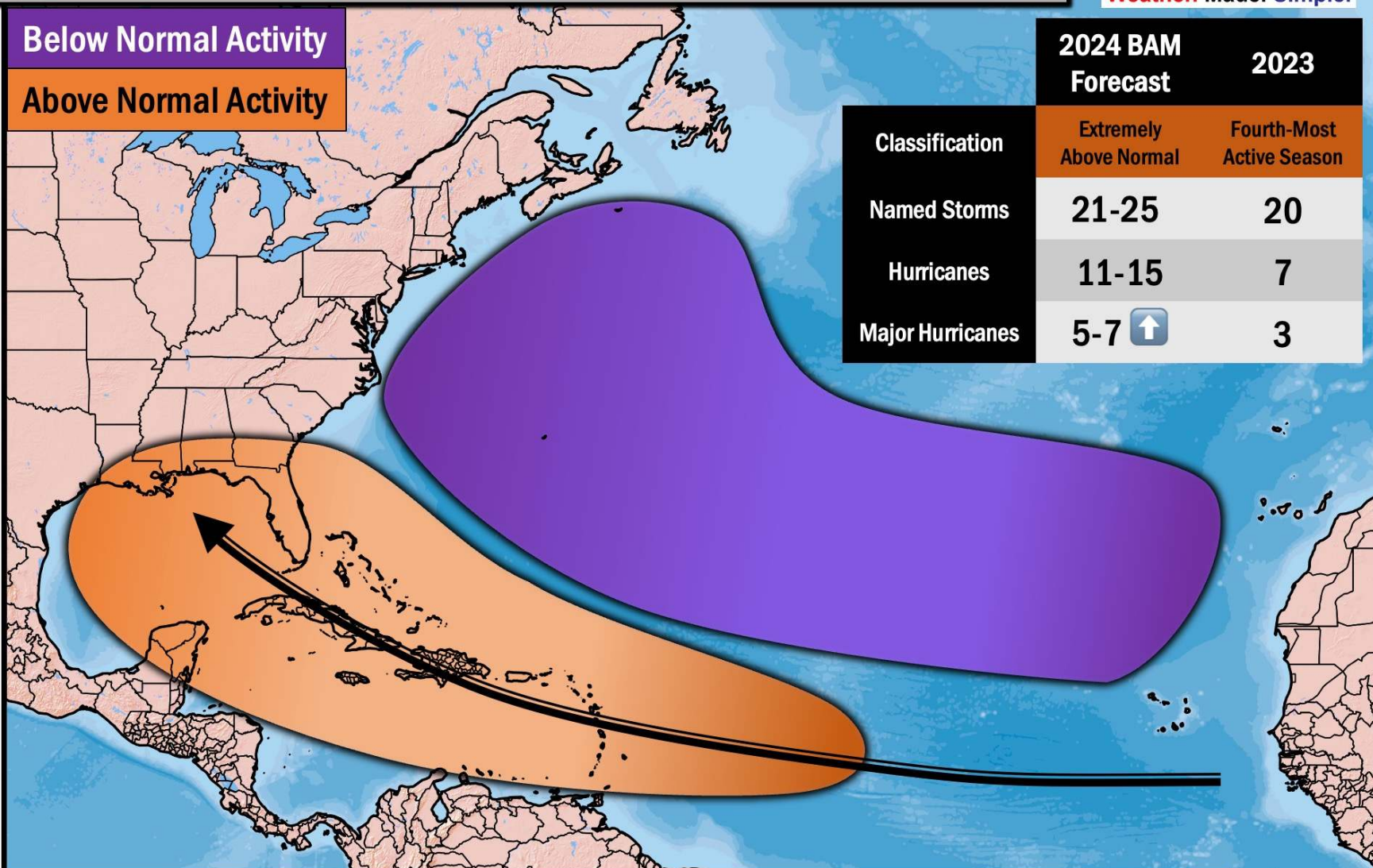
As always, please do not hesitate to reach out to us with any forecast questions via the chat option on Clarity or our on-call number, **(317)-560-8122** press **1** for forecast questions.

2024 HURRICANE SEASON OUTLOOK



Below Normal Activity

Above Normal Activity



2024 BAM
Forecast

2023

Classification

Extremely
Above Normal

Fourth-Most
Active Season

Named Storms

21-25

20

Hurricanes

11-15

7

Major Hurricanes

5-7

3

Updated: June 7, 2024

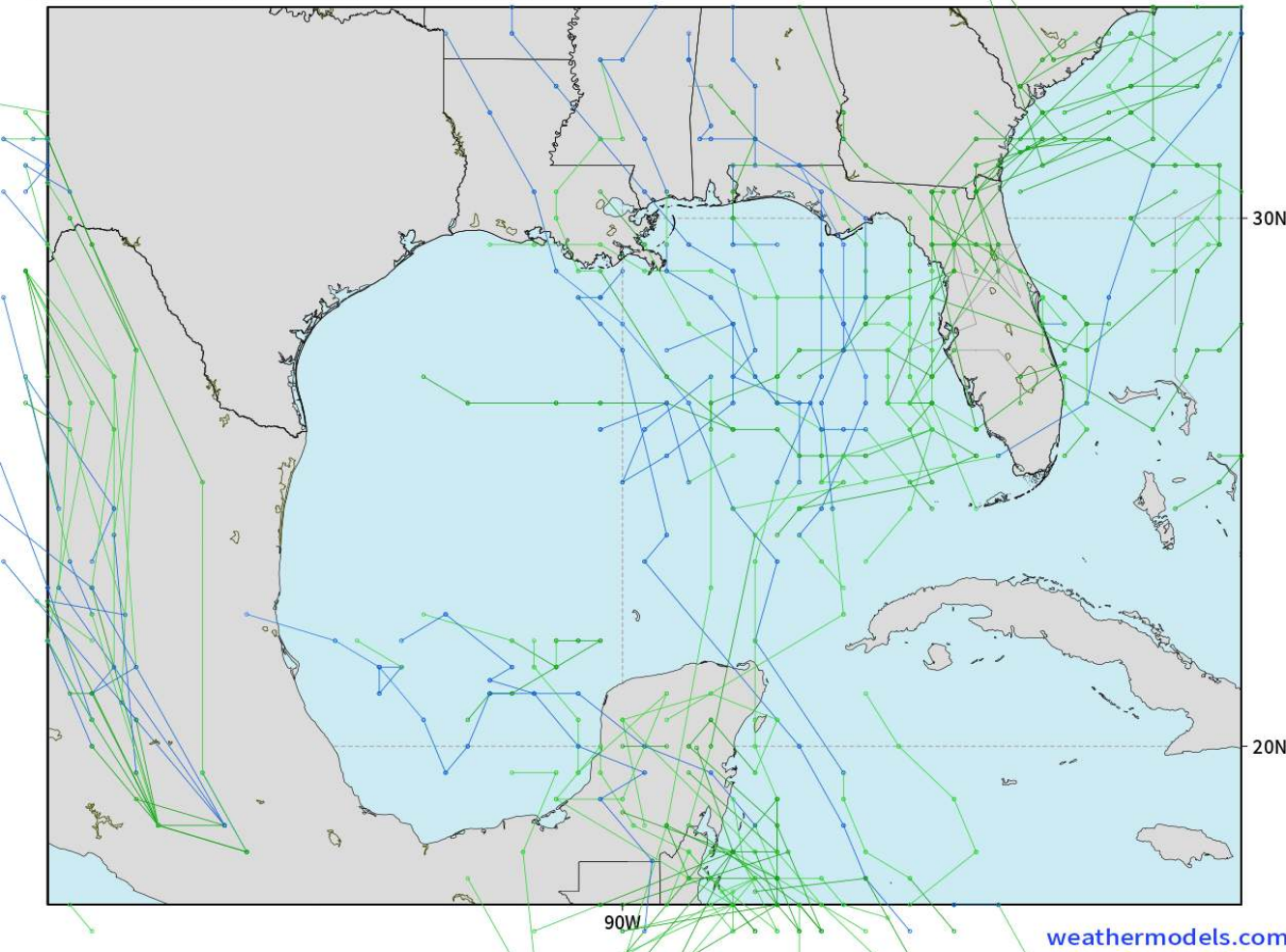
PREPARED BY: XANDER LOWRY

Houston Pilots Tropical Update

American Model Next 10 Days - Tropical Tracks

NOAA GEFSv12 | All Ensemble Cyclones +240 Hours
INIT: 06Z09JUN2024 --> UNTIL 06Z19JUN2024

o-o > 1000 hPa
o-o 1000 - 1010 hPa
o-o 980 - 999 hPa
o-o 960 - 979 hPa
o-o 950 - 959 hPa
o-o < 950 hPa



Monitoring low-end potential for a disorganized area of low pressure to work NE across the E Gulf of Mexico from 6/14- 6/17.

As of SUN PM, impacts are not favored for the Houston Area.

Houston Pilots Visibility Chart (miles)



Forecast Confidence



Time	Sun 2pm	Sun 3pm	Sun 4pm	Sun 5pm	Sun 6pm	Sun 7pm	Sun 8pm	Sun 9pm	Sun 10pm	Sun 11pm	Mon 12am	Mon 1am	Mon 2am	Mon 3am	Mon 4am	Mon 5am	Mon 6am	Mon 7am	Mon 8am	Mon 9am	Mon 10am	Mon 11am	Mon 12pm	Mon 1pm
610 Bridge	10	10	10	10	10	10	10	10	10	10	10	10	10	9	7	6	6	4	6	10	10	10	10	10
Kinder 1	10	10	10	10	10	10	10	10	10	10	10	10	10	9	7	6	6	4	6	10	10	10	10	10
Greens Bayou	10	10	10	10	10	10	10	10	10	10	10	10	10	9	7	6	6	4	6	10	10	10	10	10
Shell Crude	10	10	10	10	10	10	10	10	10	10	10	10	10	9	9	6	6	4	6	10	10	10	10	10
Lynchburg Ferries	10	10	10	10	10	10	10	10	10	10	10	10	10	9	9	6	6	4	6	10	10	10	10	10
Exxon 3	10	10	10	10	10	10	10	10	10	10	10	10	10	9	9	6	6	4	6	10	10	10	10	10
Morgans Point	10	10	10	10	10	10	10	10	10	10	10	10	10	10	10	9	7	6	6	10	10	10	10	10
75/76	10	10	10	10	10	10	10	10	10	10	10	10	10	10	10	10	9	6	7	10	10	10	10	10
63/64	10	10	10	10	10	10	10	10	10	10	10	10	10	10	10	10	10	6	7	10	10	10	10	10
51/52	10	10	10	10	10	10	10	10	10	10	10	10	10	10	10	10	10	6	7	10	10	10	10	10
37/38	10	10	10	10	10	10	10	10	10	10	10	10	10	10	10	10	10	6	7	10	10	10	10	10
25/26	10	10	10	10	10	10	10	10	10	10	10	10	10	10	10	10	10	6	7	10	10	10	10	10
11/12	10	10	10	10	10	10	10	10	10	10	10	10	10	10	10	10	10	6	7	10	10	10	10	10
1 & 2 Bravo	10	10	10	10	10	10	10	10	10	10	10	10	10	10	10	10	9	6	6	7	7	7	10	10

NOTE: This is automated data that may/may not agree with the official BAM thinking that's found on the daily slides or special visibility report slides. This data should be used as a guide only

Houston Pilots Wind Chart



Forecast Confidence



Example

Sustained wind 13 Knots
Gusts 18 Knots
Wind from the N

WS: 13
G:18
N

Time Knots	Sun 2pm	Sun 3pm	Sun 4pm	Sun 5pm	Sun 6pm	Sun 7pm	Sun 8pm	Sun 9pm	Sun 10pm	Sun 11pm	Mon 12am	Mon 1am	Mon 2am	Mon 3am	Mon 4am	Mon 5am	Mon 6am	Mon 7am	Mon 8am	Mon 9am	Mon 10am	Mon 11am	Mon 12pm	Mon 1pm
610 Bridge	7	8	8	9	8	7	7	6	5	4	3	3	3	2	2	1	1	1	1	1	2	2	3	3
	15	16	16	16	15	14	12	11	10	8	7	7	6	6	5	4	4	3	3	4	4	5	7	7
	SSE	SSE	SSE	SSE	SSE	SSE	SSE	SSE	SSE	SSE	S	SSE	SSE	SSE	S	WSW	NNW	NNW	NNW	NNW	N	N	NNE	E
Kinder 1	8	8	9	9	8	7	7	6	5	4	3	3	3	2	2	1	1	1	1	1	2	2	3	3
	16	16	16	16	15	14	12	11	10	8	7	7	6	5	5	4	4	3	3	4	4	5	7	7
	SSE	SSE	SSE	SSE	SSE	SSE	SSE	SSE	SSE	SSE	S	SSE	SSE	S	WSW	N	NNW	NNW	NNW	N	N	NNE	E	
Greens Bayou	8	9	9	9	8	7	7	5	5	4	3	3	3	2	2	1	1	1	1	1	2	3	3	
	16	16	16	16	15	14	12	11	9	8	7	7	6	5	5	4	3	3	4	4	5	6	7	
	SE	SE	SE	SE	SSE	SSE	SSE	SSE	SSE	SSE	SSE	SSE	S	SSE	SSW	WNW	NNW	NNW	NNW	NW	N	NNE	E	
Shell Crude	8	9	9	9	8	7	7	5	5	4	3	3	3	2	2	1	1	1	1	1	2	3	3	
	16	16	16	16	15	14	12	10	9	8	7	7	6	5	5	4	4	3	3	4	4	5	6	7
	SE	SE	SE	SSE	SSE	SSE	SSE	SSE	SSE	SSE	S	SSE	S	SSE	SSW	W	NNW	NNW	NNW	NNW	N	N	NE	E
Lynchburg Ferries	8	9	9	9	8	7	6	5	4	3	3	3	2	2	2	1	1	1	1	1	2	2	3	
	16	16	16	16	15	14	12	10	9	7	6	7	6	5	4	4	3	3	3	4	4	5	7	7
	SSE	SSE	SSE	SSE	SSE	SSE	SSE	SSE	SSE	S	S	S	S	SSE	SSW	WNW	NNW	N	NNW	N	N	NE	E	
Exxon 3	10	11	11	11	11	11	9	8	7	6	5	5	5	4	4	3	3	3	3	3	3	3	4	4
	17	17	17	17	16	16	14	12	10	9	8	8	8	7	6	5	5	5	5	5	6	7	8	
	SSE	SSE	SSE	SSE	SSE	SSE	SSE	SSE	S	S	S	S	S	S	SW	NW	N	N	N	NNE	NE	E	E	
Morgans Point	11	11	11	11	11	10	9	8	7	6	5	5	5	4	4	3	3	3	3	3	3	3	5	
	17	17	17	17	16	16	13	12	10	9	8	8	8	7	6	5	5	5	5	6	6	8	8	
	SE	SSE	SSE	SSE	SSE	SSE	SSE	SSE	S	S	S	S	S	S	SSW	W	NW	NNW	NNW	NNW	NE	E	E	
75/76	11	11	11	11	11	11	10	9	7	7	7	6	5	5	5	4	3	3	3	3	3	4	5	
	18	18	18	17	16	14	13	11	10	9	9	8	8	8	8	6	6	6	5	5	6	7	8	
	SE	SSE	SSE	SSE	SSE	SSE	SSE	S	S	S	S	S	S	S	SSW	W	NW	NNW	NNW	NW	ESE	E	E	
63/64	11	11	11	11	11	11	9	7	7	7	7	6	6	5	5	4	3	3	3	3	3	4	4	
	17	17	17	17	16	16	14	12	11	10	9	9	8	8	8	7	6	5	5	5	6	6	8	
	SSE	SSE	SSE	SSE	SSE	SSE	SSE	S	S	S	S	S	S	S	SSW	SW	W	NW	NNW	NE	E	E		
51/52	10	11	11	11	10	10	9	8	7	7	7	6	5	5	5	4	3	3	3	3	4	4	5	
	16	16	17	17	15	15	13	12	11	10	9	9	8	8	8	7	6	6	5	5	6	6	8	
	SSE	SSE	SSE	SSE	SSE	SSE	SSE	SSE	S	S	S	S	S	S	SSW	WSW	NNW	N	NNE	NE	E	SE		
37/38	10	11	11	10	10	10	9	8	7	7	7	6	5	5	5	4	3	3	3	3	3	4	4	
	16	16	16	16	15	14	13	11	10	10	9	9	8	8	8	7	6	6	6	6	6	7	7	
	SSE	SSE	SSE	SSE	SSE	SSE	SSE	SSE	S	S	S	S	S	SSE	S	S	SW	WSW	NNW	N	E	E	SE	
25/26	10	10	10	10	9	9	9	8	7	7	7	6	6	5	5	4	4	3	3	3	3	4	5	
	15	15	16	15	14	14	12	11	10	10	9	9	8	8	8	6	6	6	6	6	6	7	7	
	SSE	SSE	SSE	SSE	SSE	SSE	SSE	SSE	S	S	S	S	S	SSE	SSE	S	SSW	SW	W	NNE	E	E		
11/12	9	9	10	9	9	9	8	7	7	6	6	6	5	5	5	4	3	3	3	3	4	4	5	
	15	15	15	14	13	13	11	11	10	9	9	9	8	8	8	6	6	6	6	6	6	7	7	
	SSE	SSE	SSE	SSE	SSE	SSE	SSE	SSE	S	S	S	S	S	SSE	S	S	S	S	SSW	SW	E	E	ESE	
1 & 2 Bravo	9	9	9	9	9	9	9	8	7	7	7	7	7	7	7	6	5	5	4	4	4	4	4	
	14	14	14	14	13	13	12	11	11	10	10	10	9	9	8	7	7	6	6	6	6	6	6	
	SSE	SE	SSE	SSE	SSE	SSE	SSE	SSE	S	S	S	S	SSE	SSE	SSE	S	S	S	SSW	SSE	SSE	ESE	NNW	SE

NOTE: This is automated data that may/may not agree with the official BAM thinking that's found on the daily slides. This data should be used as a guide only.

Houston Pilots: Sun. 6/9/2024



Forecast Discussion

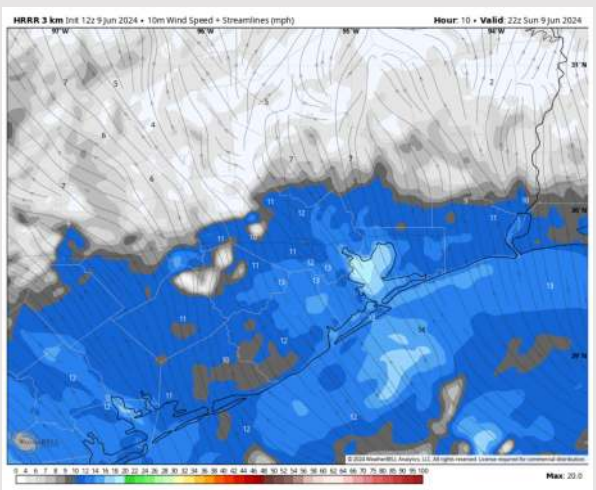
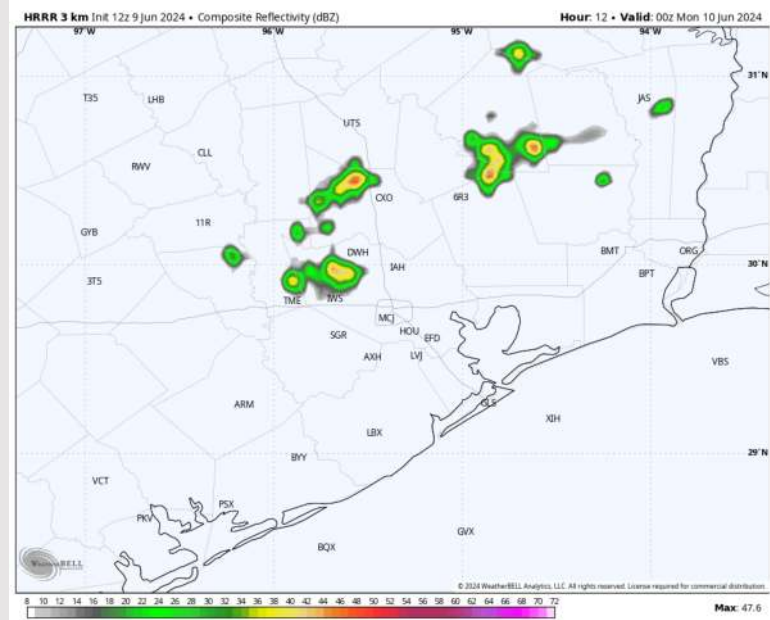
Precip: Hit/miss thunderstorms/showers (20%) possible throughout the remainder of the day. Bulk of chances favored to remain to the N of all stations. **Isolated lightning strikes will be the main threat with these, isolated pockets of 20-25 kts wind gusts possible!**

Wind: Winds out of the S/SE throughout the rest of the day today. **N of Morgan's Point:** Winds at 5 – 10 kts through 9PM, before winds decrease to 3-8 kts for the rest of the evening. **S of Morgan's Point:** Winds at 8 - 13 kts throughout the day.

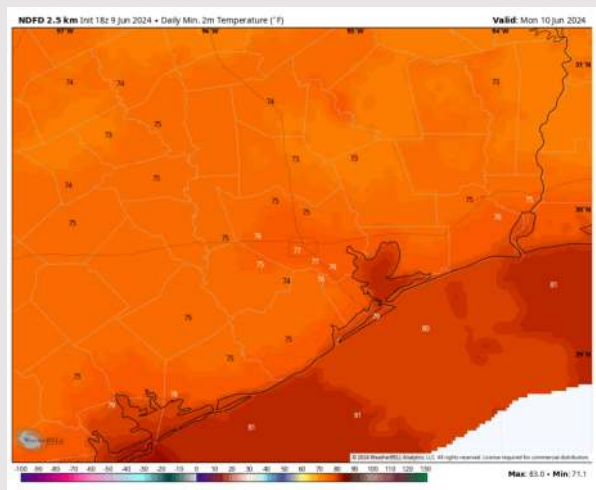
Low Temps: **N of Morgan's Point:** Mid 70s F **S of Morgan's Point:** Upper 70s F/Low 80s F.

Visibility: Not favoring any visibility concerns for today.

Precip Image: 7 PM CT



Wind Speed:
5 PM CT



Low Temps
MON AM

Houston Pilots: Mon. 6/10/2024



Forecast Discussion

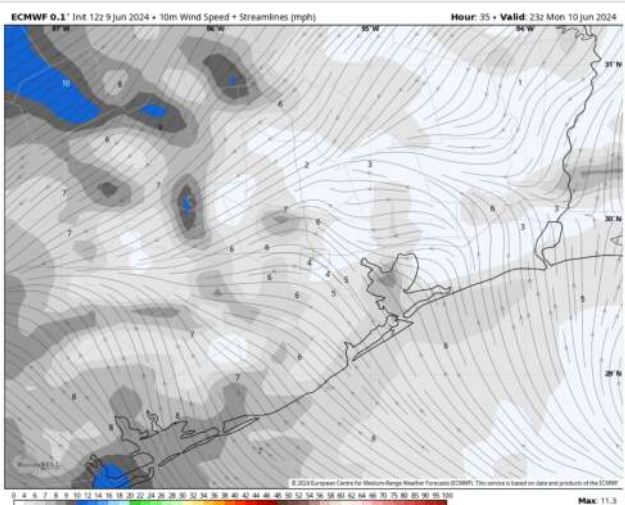
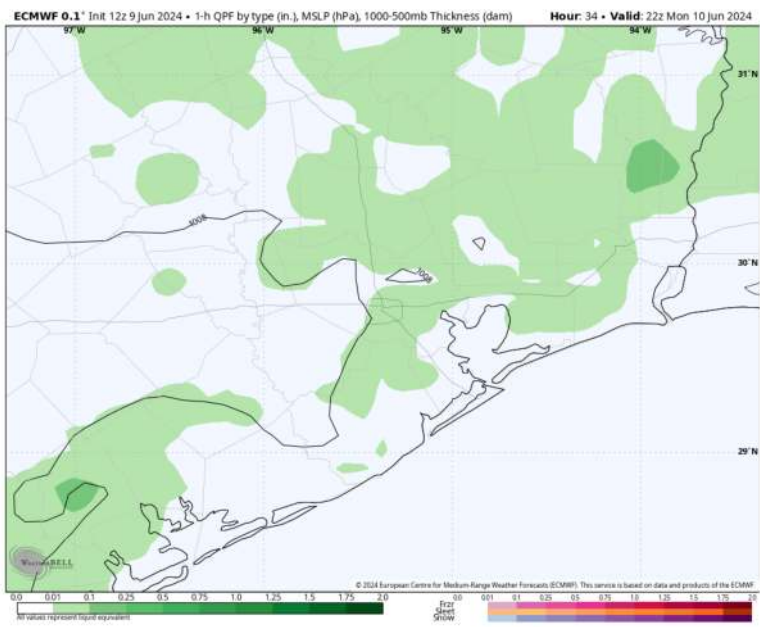
Precip: Scattered (20%), light showers favored between 6AM – 12PM. Better chances (40%) for scattered showers to work in starting at 4PM – 9PM, before drying out after 9PM. **Thunderstorm wind gusts of 25-30 kts along with lightning will be possible.**

Wind: Winds are favored to be out of the S / SE for the entire day. **N of Morgan's Point:** Favoring winds at 4 - 8 kts through the entire day. **S of Morgan's Point:** Favoring winds at 3 - 8kts for the entire day.

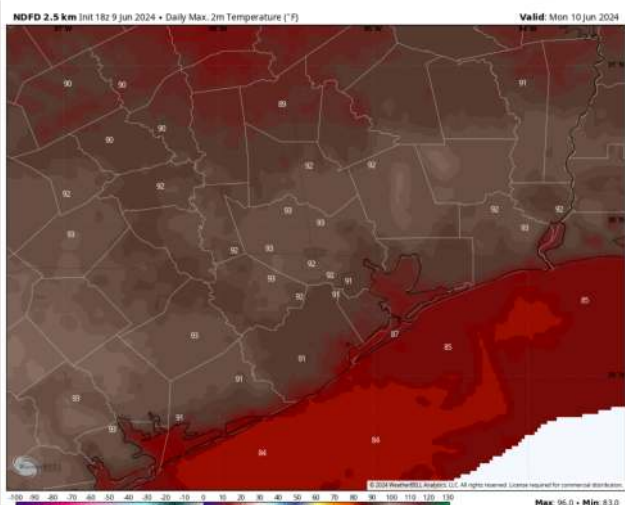
High Temps: **N of Morgan's Point:** Low 90's F. **S of Morgan's Point:** Mid to upper 80s F.

Visibility: Not anticipating any fog risks for Monday.

Precip Image: 5 PM CT



Wind Speed
8 AM CT



High Temps
Monday

Houston Pilots: Tue. 6/11/2024



Forecast Discussion

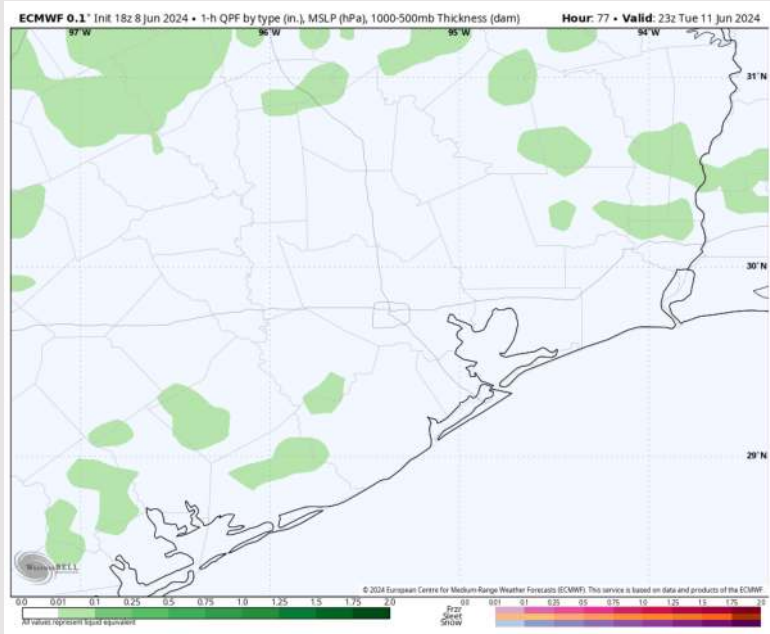
Precip: Isolated (10%) showers possible for all stations through 11AM. After 11AM isolated risks (10%) of showers remains for stations N of Morgan's point for the rest of the day Tuesday

Wind: Winds will be variable in direction through 9 AM, settling out of the SE/E after that time. **N of Morgan's Point:** Winds will be at 3-8 kts throughout the day. **S of Morgan's Point:** Winds also at 5-10 kts throughout the day Tuesday.

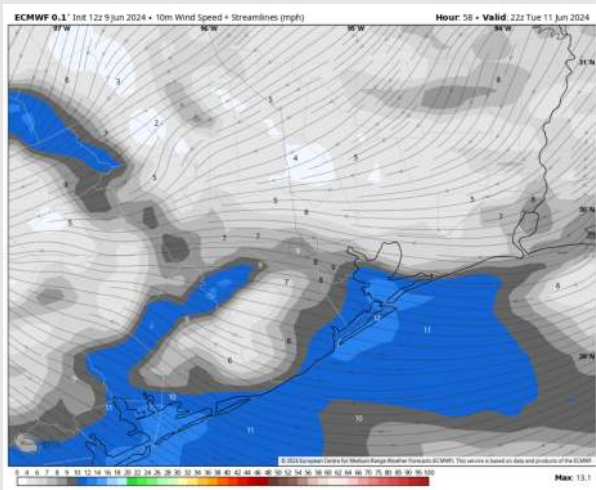
High Temps: **N of Morgan's Point:** Low 90s F. **S of Morgan's Point:** Upper 80s F.

Visibility: Not favoring fog for Tuesday.

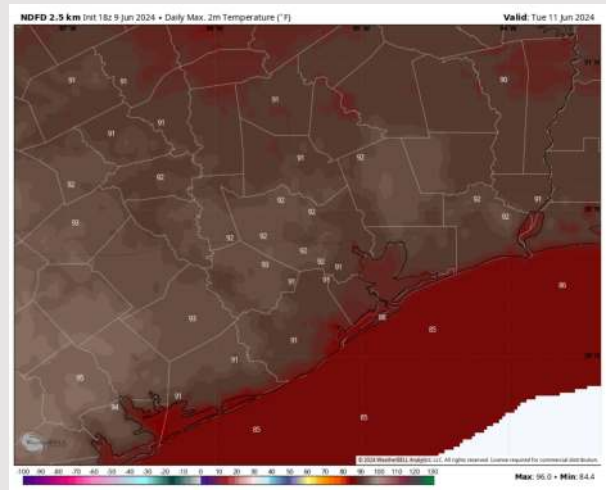
Precip Image: 6 PM CT



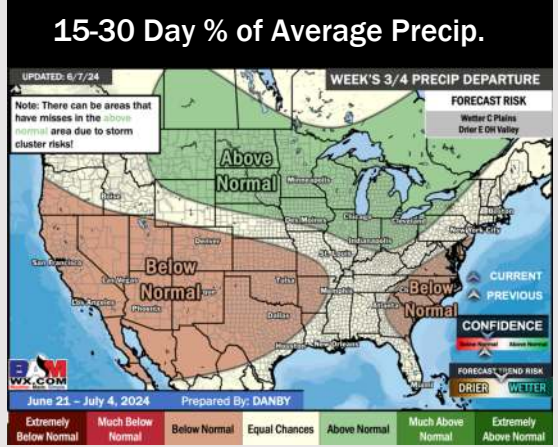
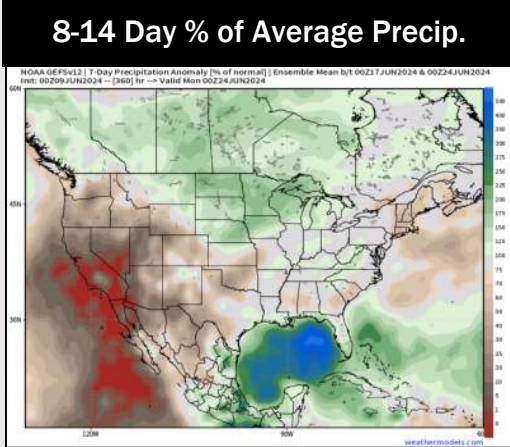
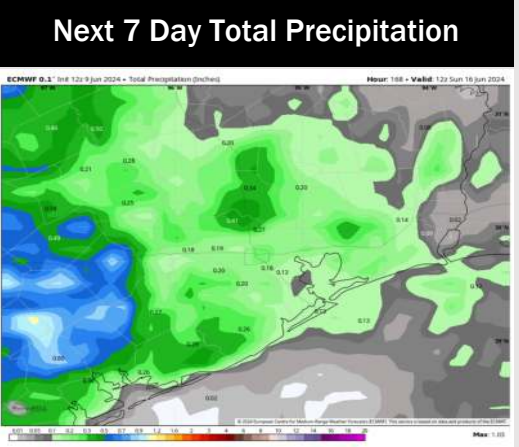
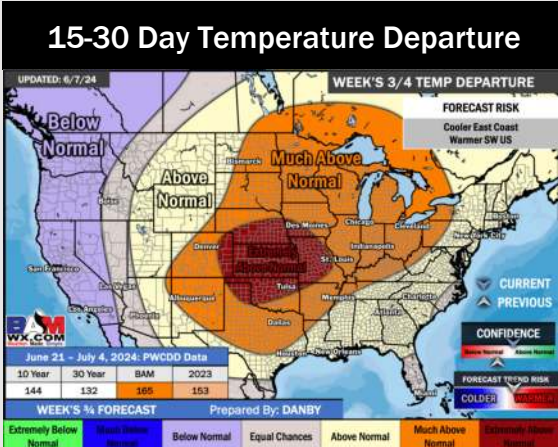
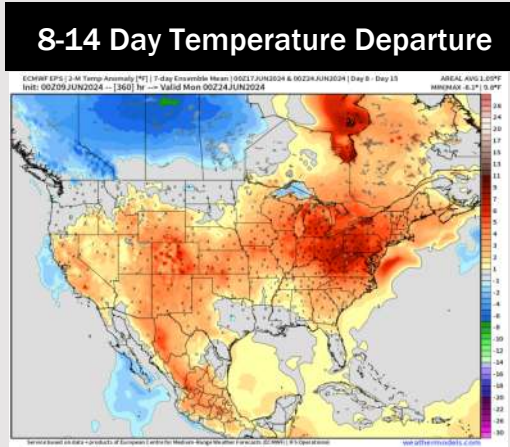
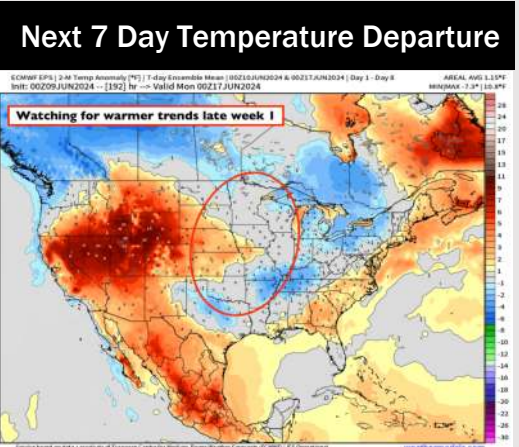
Wind Speed:
5 PM CT



High Temps
Tuesday



Houston Pilots: 6/9/24



- Temps are expected to be near normal for the week 1 timeframe. Minor rain chances to start this week before better coverage works through WED/THU (risk that more widespread precip remains to the North).
- Below normal precipitation chances are at play during the week 2 timeframe. Temps are expected to be near to slightly above normal.
- Near normal chances for precipitation are favored in the weeks 3/4 timeframe while temperatures are expected to be above normal.