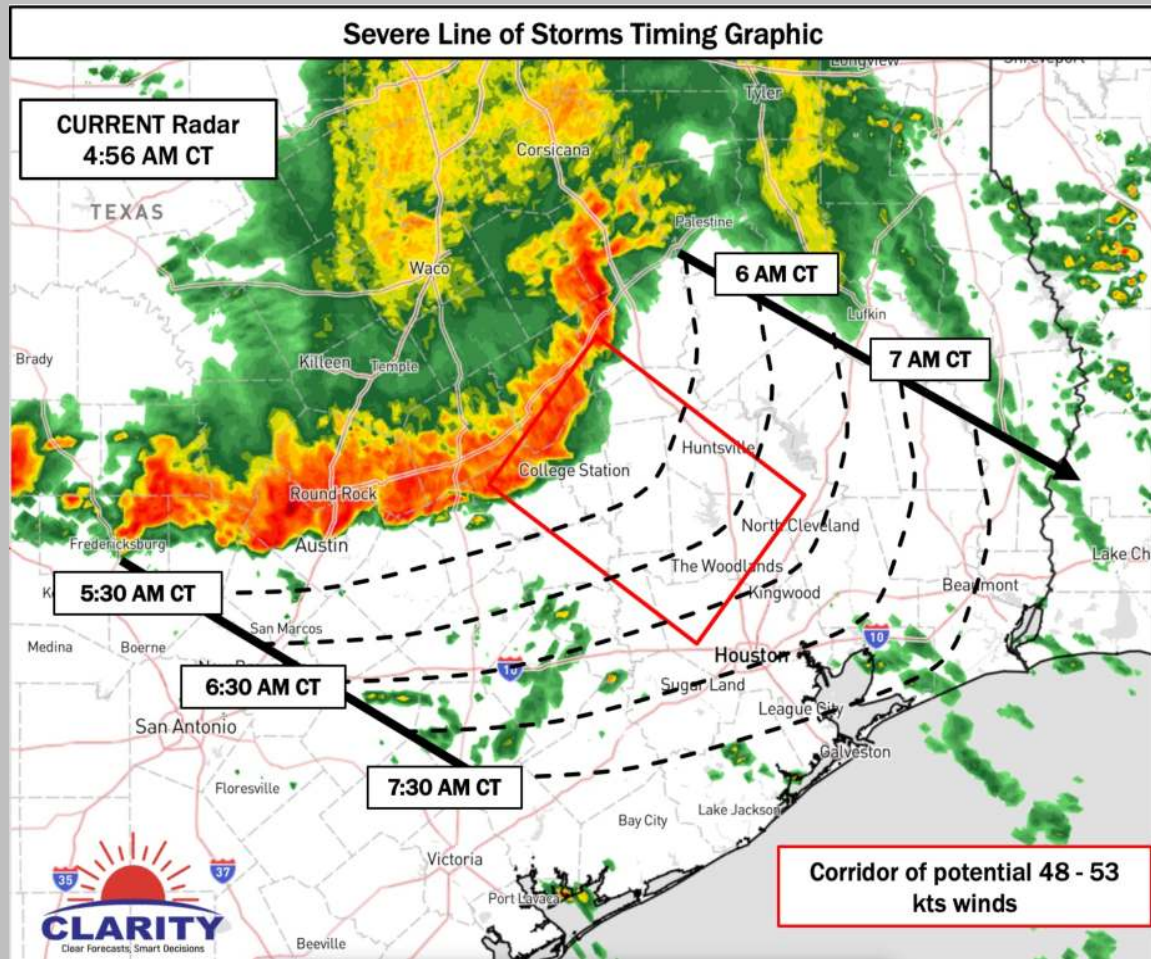


## Severe Line of Storms Timing Graphic



## Strong to Severe Line of Storms Timing Graphic

Forecast update as of 5:05 AM CT on May 31st

Confidence in potential severe weather: 3.5/5

Confidence in timing: 4/5

- Check the latest timing graphic below for when this line can reach the area this contains strong winds as the sole threat
- Strongest wind gusts of up to 48 - 53 kts possible with high confidence for at least 40-kt winds
- Risk is for coverage on radar to weaken a tad versus what is shown on Nowcast

# Houston Pilots Forecast Package



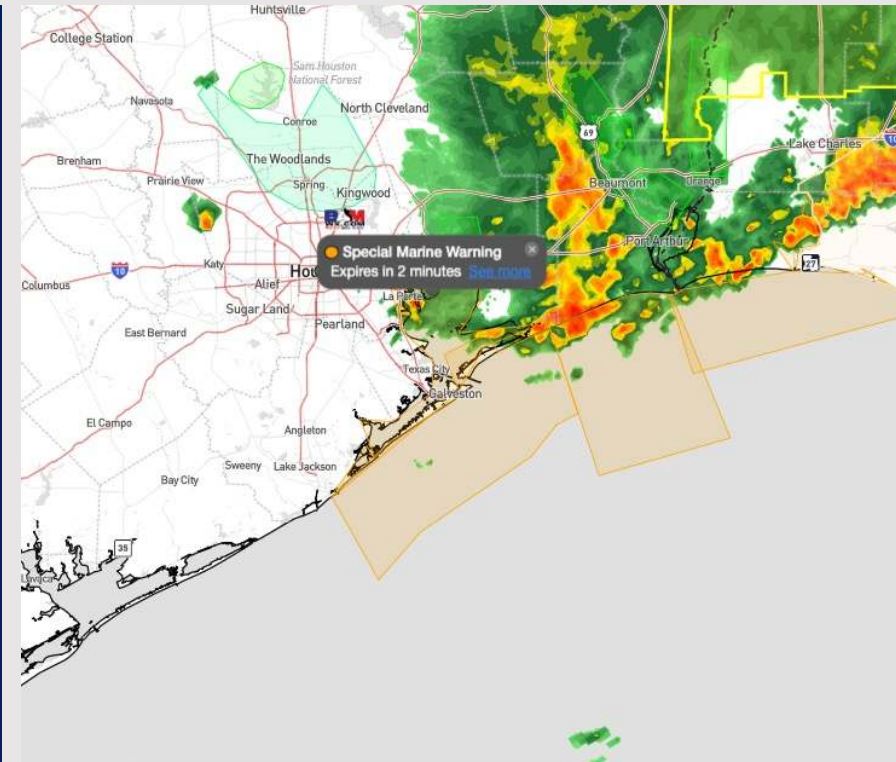
Updated: 11:00 PM CT

Friday, May 31, 2024

Forecaster: Xander Lowry

## Weather Headlines

- Potential for more waves of strong to severe storms possible throughout the end of the week and into the weekend.
- Visibility concerns will come from heavy downpours to end the week
- **Elevated non-storm related, southeasterly wind gusts of 25-30+ kts will be possible over the coming days. Need to watch overnight FRI into SAT AM for wave heights of near 4 ft at the Boarding Station.**



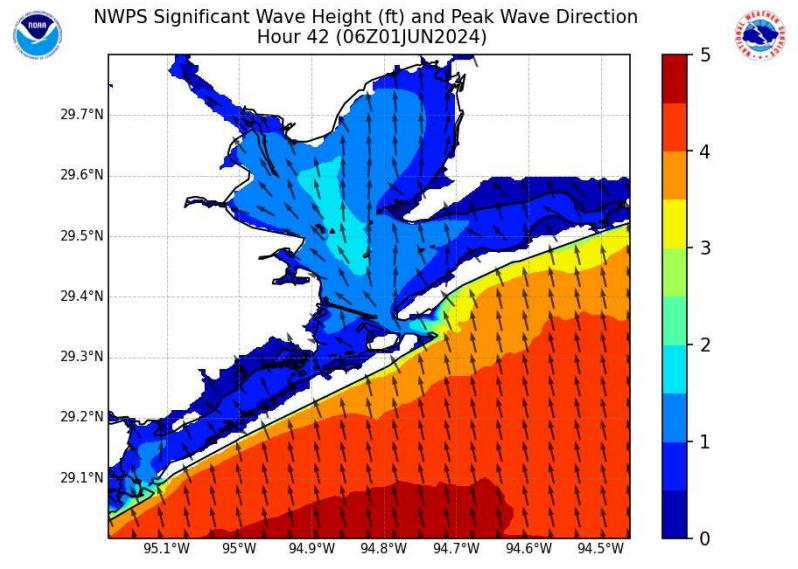
**Current Radar: 10:30 PM CT**



As always, please do not hesitate to reach out to us with any forecast questions via the chat option on Clarity or our on-call number, **(317)-560-8122** press 1 for forecast questions.

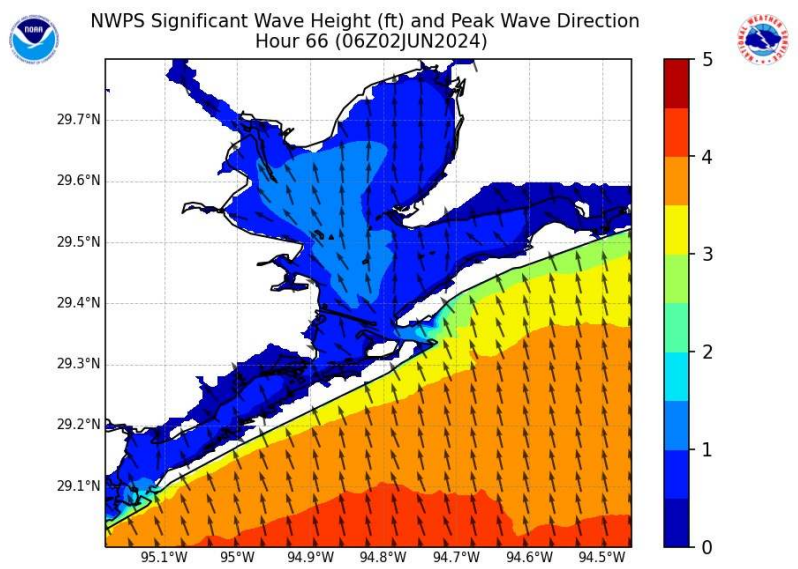
# Houston Pilots Wave Height Update

## Significant Wave Height Image



1 AM CT SAT

Periods of strong winds will result in increased wave heights SAT AM. By 1 AM SAT, waves heights will be favored to 4.0' – 4.5'.



1 AM CT SUN

Later SAT PM wave heights will once again begin to decrease down to 3' – 3.5' throughout the evening on SAT and into SUN AM

# Houston Pilots Visibility Chart (miles)



Time	Thu 10pm	Thu 11pm	Fri 12am	Fri 1am	Fri 2am	Fri 3am	Fri 4am	Fri 5am	Fri 6am	Fri 7am	Fri 8am	Fri 9am	Fri 10am	Fri 11am	Fri 12pm	Fri 1pm	Fri 2pm	Fri 3pm	Fri 4pm	Fri 5pm	Fri 6pm	Fri 7pm	Fri 8pm	Fri 9pm
610 Bridge	10	10	10	10	10	10	10	10	10	7	9	10	10	10	10	10	10	10	10	10	10	9	7	10
Kinder 1	10	10	10	10	10	10	10	10	10	7	9	10	10	10	10	10	10	10	10	10	10	7	7	10
Greens Bayou	10	10	10	10	10	10	10	10	10	6	9	10	10	10	10	10	10	10	10	10	10	7	7	10
Shell Crude	10	10	10	10	10	10	10	10	10	6	9	10	10	10	10	10	10	10	10	10	10	7	7	10
Lynchburg Ferries	10	10	10	10	10	10	10	10	10	6	9	10	10	10	10	10	10	10	10	10	10	7	7	10
Exxon 3	10	10	10	10	10	10	10	10	10	6	7	10	10	10	10	10	10	10	10	10	10	7	6	10
Morgans Point	10	10	10	10	10	10	10	10	10	6	7	10	10	10	10	10	10	10	10	10	10	7	6	10
75/76	10	10	10	10	10	10	10	10	10	9	9	10	10	10	10	10	10	10	10	10	10	6	6	9
63/64	10	10	10	10	10	10	10	10	10	9	9	10	10	10	10	10	10	10	10	10	10	6	6	9
51/52	10	10	10	10	10	10	10	10	10	9	9	10	10	10	10	10	10	10	10	9	9	6	6	9
37/38	10	10	10	10	10	10	10	10	10	9	9	10	10	10	10	10	10	10	10	9	9	6	6	9
25/26	10	10	10	10	10	10	10	10	10	9	9	10	10	10	10	10	10	10	10	9	9	6	6	9
11/12	10	10	10	10	10	10	10	10	10	9	9	10	10	10	10	10	10	10	10	9	6	6	5	9
1 & 2 Bravo	9	10	9	10	9	10	9	10	10	6	7	10	10	10	10	10	10	6	6	6	6	4	4	9

**NOTE: This is automated data that may/may not agree with the official BAM thinking that's found on the daily slides or special visibility report slides. This data should be used as a guide only**

# Houston Pilots Wind Chart



## Forecast Confidence



## Example

Sustained wind 13 Knots  
Gusts 18 Knots  
Wind from the N

WS: 13  
G:18  
N

Time Knots	Thu 10pm	Thu 11pm	Fri 12am	Fri 1am	Fri 2am	Fri 3am	Fri 4am	Fri 5am	Fri 6am	Fri 7am	Fri 8am	Fri 9am	Fri 10am	Fri 11am	Fri 12pm	Fri 1pm	Fri 2pm	Fri 3pm	Fri 4pm	Fri 5pm	Fri 6pm	Fri 7pm	Fri 8pm	Fri 9pm
610 Bridge	9	8	7	7	7	7	7	7	6	7	7	7	8	9	9	9	10	10	10	10	9	9	8	8
	17	16	16	15	15	14	14	14	13	14	15	15	16	17	19	19	19	19	19	18	17	17	16	15
Kinder 1	8	8	7	7	7	7	7	7	6	6	7	7	8	9	9	9	10	10	10	10	9	9	8	8
	17	16	16	15	15	14	14	14	13	14	15	15	16	17	19	19	19	19	19	18	17	17	16	15
Greens Bayou	8	8	7	7	7	7	7	7	6	6	7	7	8	9	9	9	10	10	9	9	9	9	8	8
	17	16	16	15	15	14	14	14	14	14	15	15	16	17	19	19	19	18	18	18	17	17	16	15
Shell Crude	9	8	7	7	7	7	7	7	7	7	7	8	9	9	9	10	10	10	10	9	9	8	8	
	17	17	16	15	15	15	14	14	14	15	15	15	16	17	19	19	19	18	18	18	17	17	16	15
Lynchburg Ferries	8	8	7	7	7	7	7	7	7	7	7	8	9	9	10	10	10	10	10	9	9	8	8	
	17	16	16	15	15	14	14	14	14	14	15	15	17	17	19	19	19	19	18	18	17	17	16	15
Exxon 3	13	13	12	12	12	11	11	11	11	11	11	11	11	11	12	12	12	12	12	12	12	11	11	12
	19	18	18	17	17	17	17	16	16	15	16	16	17	18	19	19	19	19	19	19	18	17	17	17
Morgans Point	13	13	13	12	12	12	12	11	11	11	11	11	11	11	12	12	12	12	12	12	12	11	12	12
	20	19	19	18	18	18	17	17	17	16	17	17	18	18	19	19	19	19	19	19	18	17	18	18
75/76	15	15	14	14	14	14	13	13	13	13	13	13	13	13	13	13	13	13	13	13	13	13	13	13
	21	21	20	20	20	20	19	19	19	19	19	19	19	19	20	21	21	21	20	20	20	19	19	19
63/64	15	15	15	14	14	14	14	13	13	13	13	13	13	13	13	13	13	13	13	13	13	13	13	13
	21	21	20	20	20	20	20	19	19	19	19	19	19	19	20	21	21	21	20	20	20	19	19	19
51/52	15	15	15	15	15	15	15	14	14	13	13	13	13	13	13	13	13	13	13	13	13	13	13	14
	21	21	20	20	20	20	20	20	20	19	19	20	20	20	20	20	20	20	20	20	19	18	19	20
37/38	15	15	15	14	15	15	15	14	14	13	13	13	13	13	13	13	13	13	13	13	13	13	13	14
	21	21	20	20	20	21	20	20	20	19	19	20	20	20	20	20	20	20	20	20	19	18	19	20
25/26	15	15	14	14	14	14	14	14	13	13	13	13	13	13	13	13	13	13	13	13	13	13	13	13
	21	21	20	20	20	20	20	20	20	19	19	19	20	20	20	20	20	20	20	20	19	18	19	20
11/12	13	13	13	13	13	13	13	13	13	12	13	13	13	13	13	13	13	13	13	13	12	12	12	13
	20	20	19	19	20	20	19	19	19	18	19	19	19	19	19	19	19	19	19	19	18	18	19	19
1 & 2 Bravo	15	15	15	15	15	15	15	15	15	14	15	15	14	14	14	13	13	13	13	14	13	13	14	15
	21	22	21	21	21	21	21	21	21	20	20	20	20	20	20	20	20	20	20	20	20	19	20	21

NOTE: This is automated data that may/may not agree with the official BAM thinking that's found on the daily slides. This data should be used as a guide only.

# Houston Pilots: Fri. 5/31/2024



## Forecast Discussion

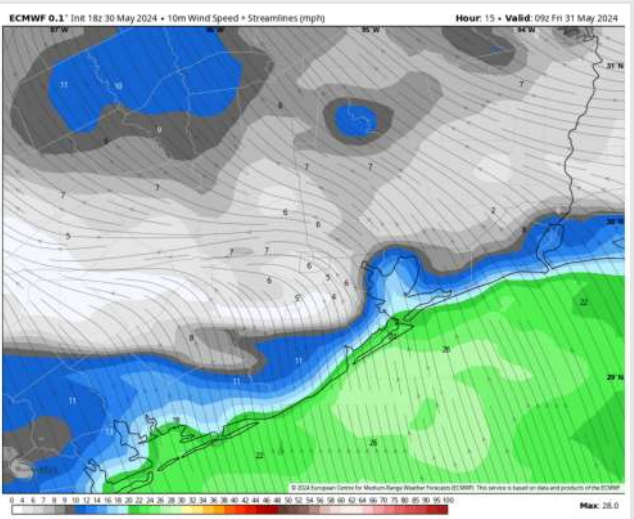
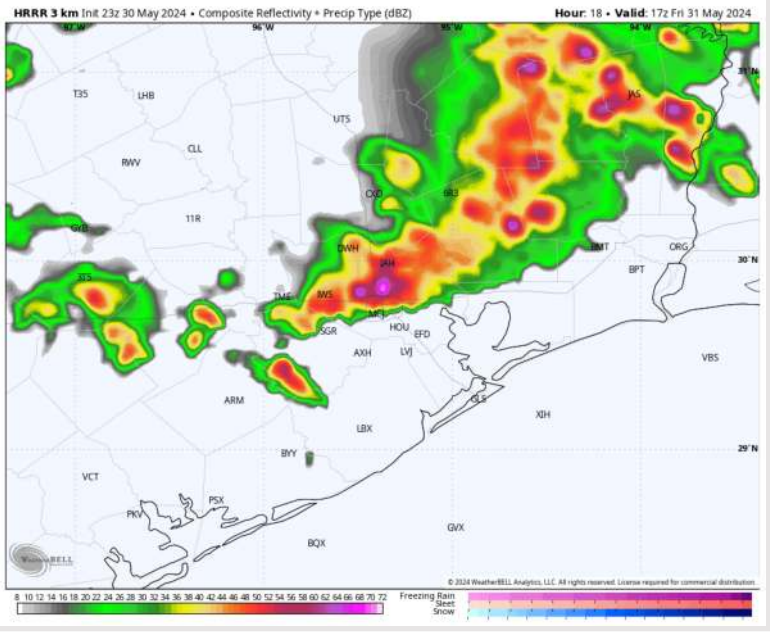
**Precip:** Shower and storm chances are on the increase for this morning. Favoring as early as 6 AM a few hit and miss cells could develop over HOU ahead of the main line. Closer to 12 PM, favoring a line of strong to severe storms to push in with the strongest of these storms not passing the Boarding Station until 2 PM CT. After 2 PM, chances for rain will be very light and isolated with the next potential for storms moving in around 7 PM. **Thunderstorm wind gusts of 40-50 kts will be possible along the leading edge of storms in the AM! Risk is morning storm line arrives 2-3 hours earlier!**

**Wind:** Winds will be out of SE throughout the day FRI. **N of Morgan's Point:** Winds at 5-10 kts through 8 AM then increase to 8 - 13 kts and remaining there for the rest of the day. **S of Morgan's Point:** Winds at 18 - 23 kts the storm. After the storm winds will sit at 15 - 20 kts **Wind gusts of 27-32 kts will be possible at all stations from 10 AM through 6 PM.**

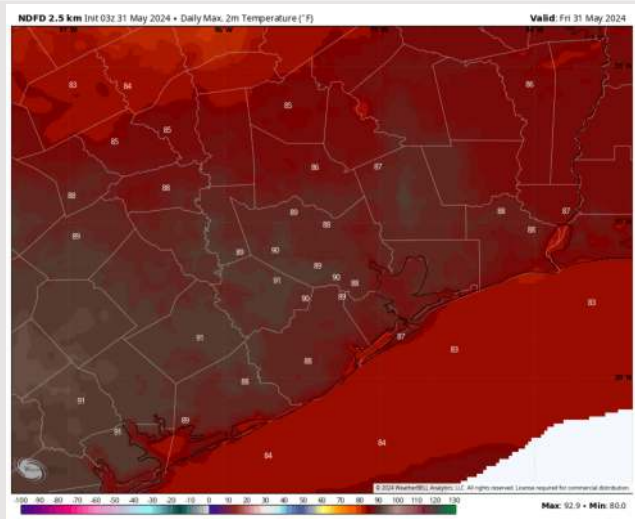
**High Temps:** **N of Morgan's Point:** Upper 80s/Low 90s F **S of Morgan's Point:** Low/Mid 80s F.

**Visibility:** Not anticipating fog however visibility may be slightly reduced under heavy downpours.

## Precip Image: 12 PM CT



**Wind Speed:  
4 AM CT**



**High Temps  
Today**

# Houston Pilots: Sat. 6/1/2024



## Forecast Discussion

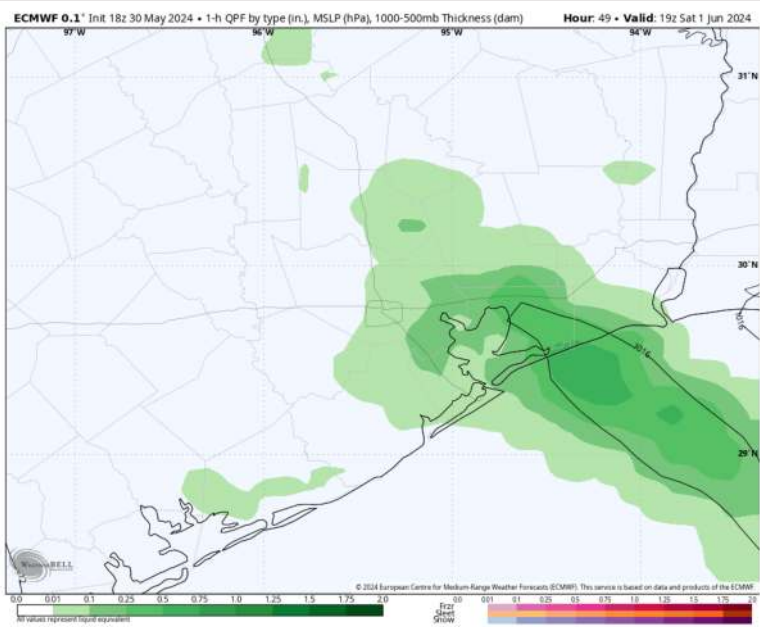
**Precip:** Isolated light rain chances (10%) will linger throughout the area from 4AM – 7AM before more widespread chances work into the area starting at 7AM – 7PM. After 7PM before chances decrease to become more scattered (30-40%) throughout the rest of the evening Saturday. **Thunderstorm wind gusts of 25 – 30 kts possible!**

**Wind:** Winds out of the S/SE throughout the day. **N of Morgan's Point:** Winds at 3-8 kts throughout the day Saturday. **S of Morgan's Point:** Winds at 18-23 kts through 6AM before decreasing to 10 – 15 kts throughout the rest of the day Saturday. **Non-Thunderstorm wind gusts of 25-30 kts will be possible for stations S of Morgan's point after 2PM.**

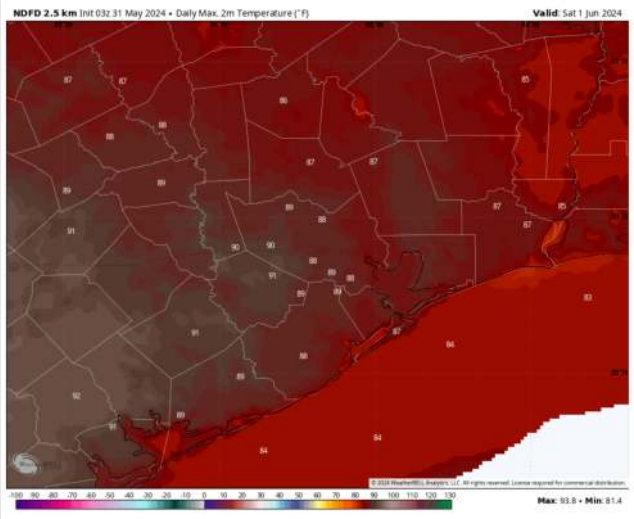
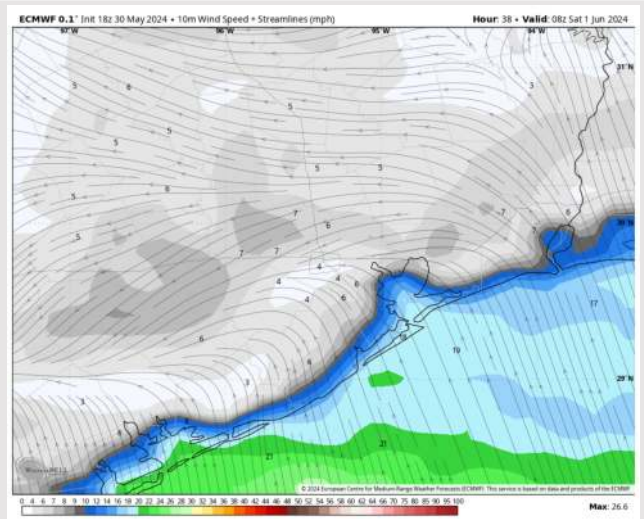
**High Temps:** **N of Morgan's Point:** Upper 80s F. **S of Morgan's Point:** Low 80s F.

**Visibility:** Not anticipating any fog risk throughout the day Saturday.

## Precip Image: 2 PM CT



Wind Speed  
3 AM CT



High Temps  
Saturday

## Forecast Discussion

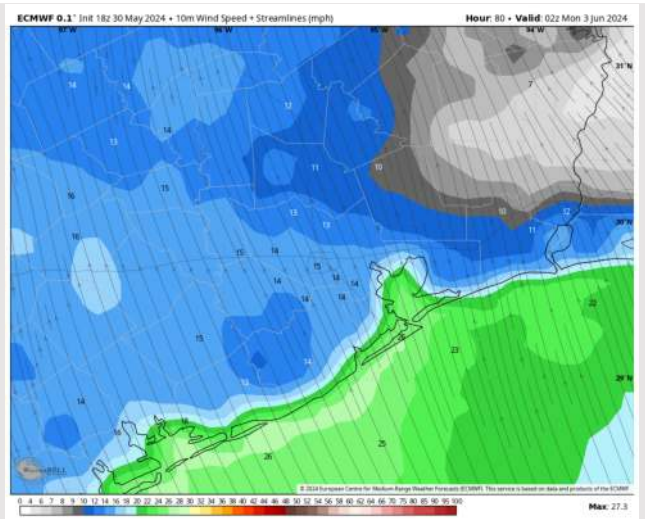
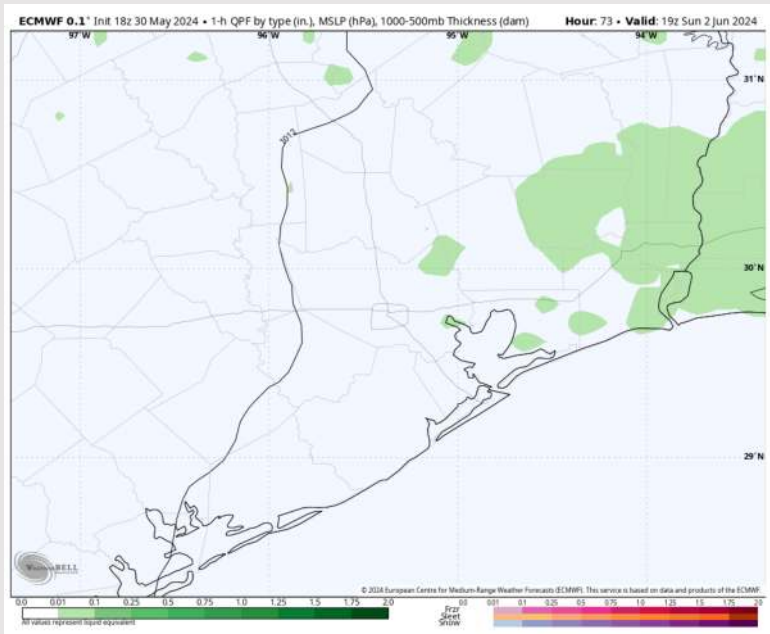
**Precip:** Favoring dry conditions outside isolated light showers between 9AM-4PM Sunday.

**Wind:** Winds out of the S/SE throughout the PM. **N of Morgan's Point:** Winds are on the increase to 5 – 10 kts through 4PM, before increasing to 9-14 kts for the remainder of the day. **S of Morgan's Point:** Winds at 11 – 16 kts through 5PM before winds increase to 19 – 24 kts throughout the rest of the day.

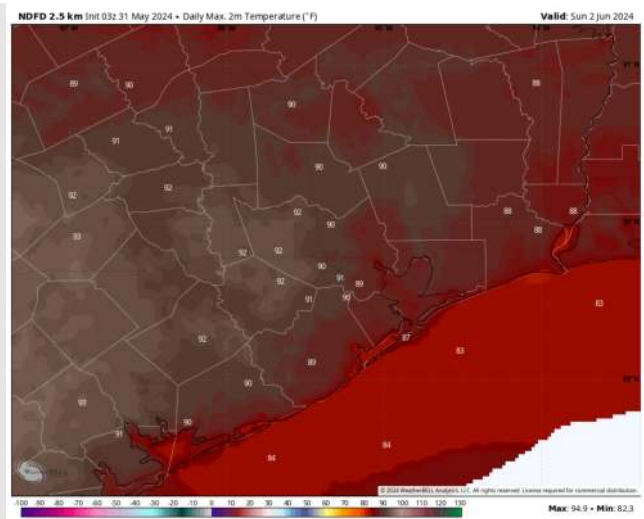
**High Temps:** **N of Morgan's Point:** Low 90s F. **S of Morgan's Point:** Near to Low 80s F.

**Visibility:** Not anticipating any fog for today.

## Precip Image: 2 PM CT



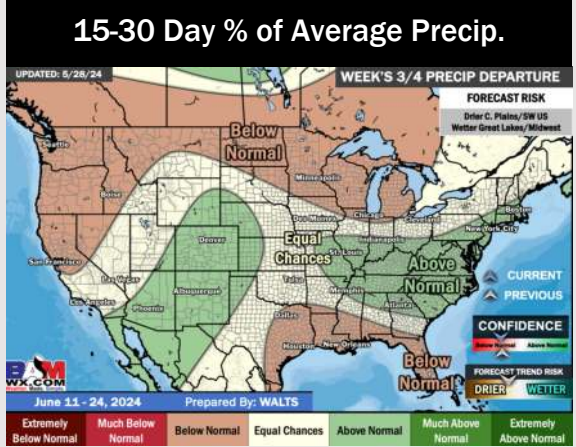
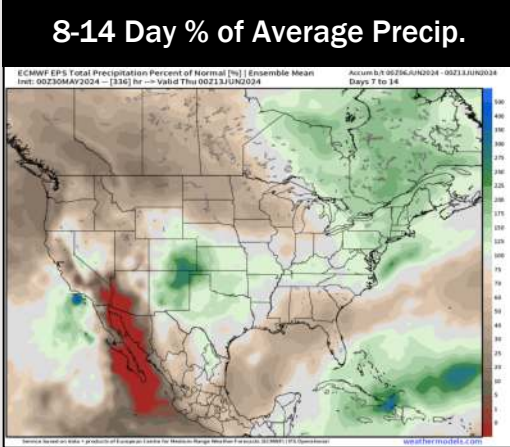
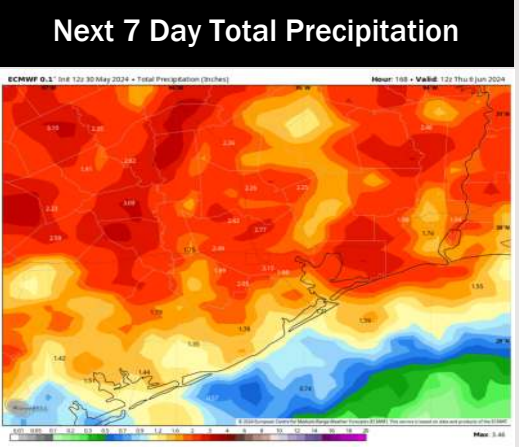
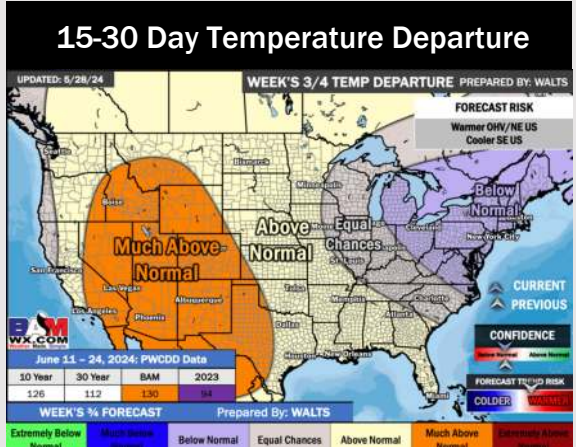
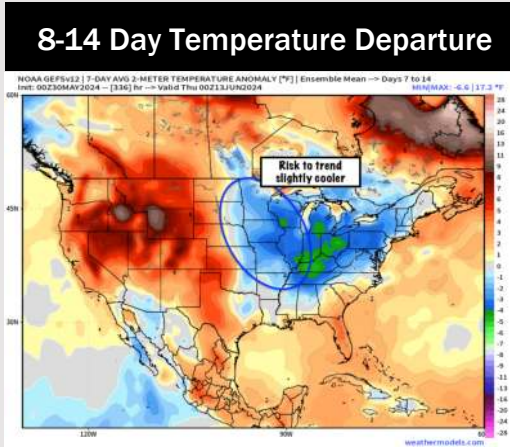
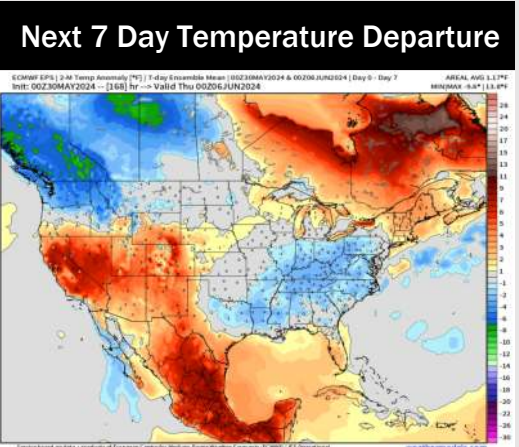
Wind Speed:  
9 PM CT



High Temps  
Sunday



# Houston Pilots: 5/30/24



- Temps are expected to be near normal for the week 1 timeframe. A more active next few days is expected with multiple shower/storm chances.
- Near normal precipitation chances are at play during the week 2 timeframe. Temps are expected to be near to above normal.
- Below normal chances for precipitation are favored in the weeks 3/4 timeframe. Temperatures expected to be above normal for the weeks 3 and 4 timeframe.