

Houston Pilots Forecast Package



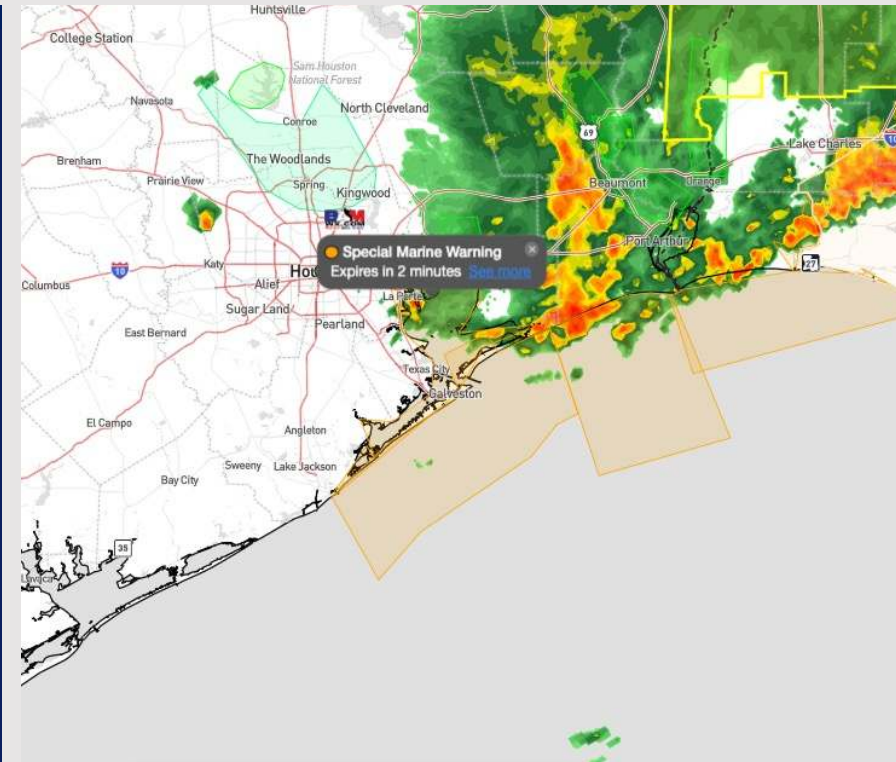
Updated: 10:45 PM CT

Thursday, May 30, 2024

Forecaster: Xander Lowry

Weather Headlines

- Potential for more waves of strong to severe storms possible throughout the end of the week and into the weekend.
- Visibility concerns will come from heavy downpours to end the week
- **Elevated non-storm related, southeasterly wind gusts of 25-30+ kts will be possible over the coming days. Need to watch overnight FRI into SAT AM for wave heights of near 4 ft at the Boarding Station.**



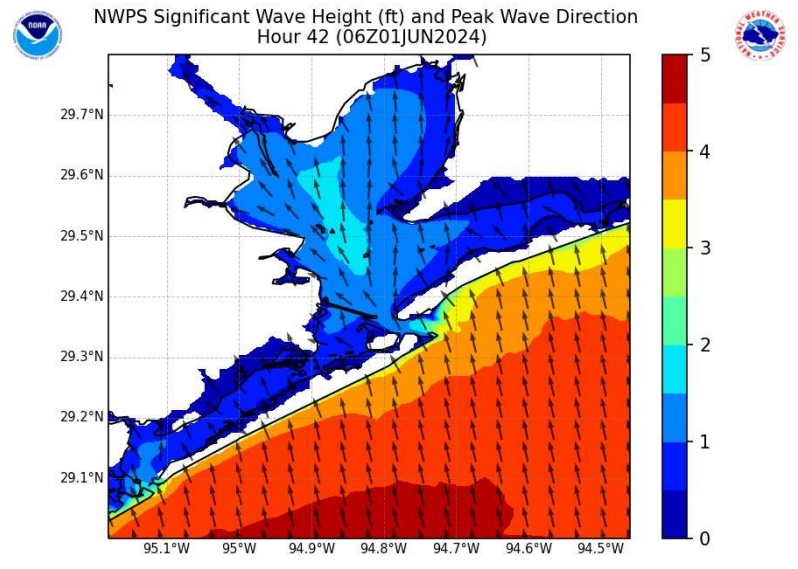
Current Radar: 10:30 PM CT



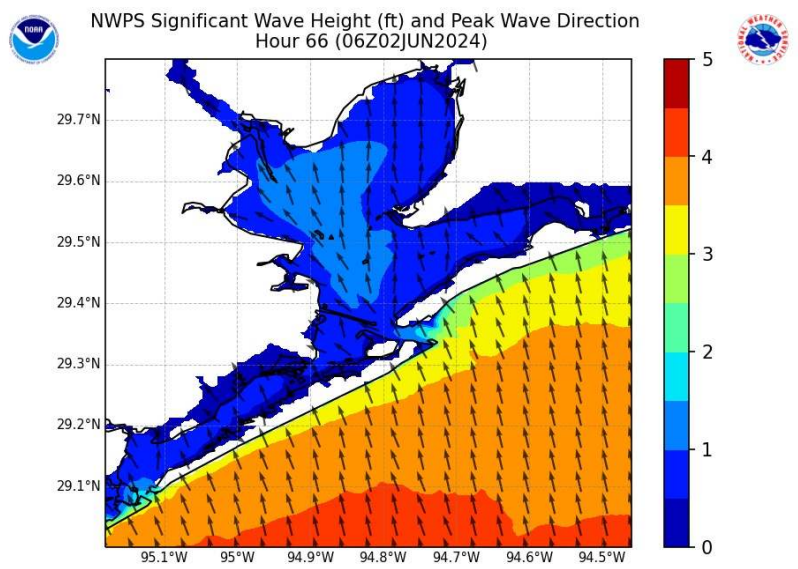
As always, please do not hesitate to reach out to us with any forecast questions via the chat option on Clarity or our on-call number, **(317)-560-8122** press 1 for forecast questions.

Houston Pilots Wave Height Update

Significant Wave Height Image



Periods of strong winds will result in increased wave heights SAT AM. By 1 AM SAT, wave heights will be favored to 4.0' – 4.5'.



Later SAT PM wave heights will once again begin to decrease down to 3' – 3.5' throughout the evening on SAT and into SUN AM

Houston Pilots Visibility Chart (miles)



Forecast Confidence



| Time | Thu 10pm | Thu 11pm | Fri 12am | Fri 1am | Fri 2am | Fri 3am | Fri 4am | Fri 5am | Fri 6am | Fri 7am | Fri 8am | Fri 9am | Fri 10am | Fri 11am | Fri 12pm | Fri 1pm | Fri 2pm | Fri 3pm | Fri 4pm | Fri 5pm | Fri 6pm | Fri 7pm | Fri 8pm | Fri 9pm |
|-------------------|----------|----------|----------|---------|---------|---------|---------|---------|---------|---------|---------|---------|----------|----------|----------|---------|---------|---------|---------|---------|---------|---------|---------|---------|
| 610 Bridge | 10 | 10 | 10 | 10 | 10 | 10 | 10 | 10 | 10 | 7 | 9 | 10 | 10 | 10 | 10 | 10 | 10 | 10 | 10 | 10 | 10 | 9 | 7 | 10 |
| Kinder 1 | 10 | 10 | 10 | 10 | 10 | 10 | 10 | 10 | 10 | 7 | 9 | 10 | 10 | 10 | 10 | 10 | 10 | 10 | 10 | 10 | 10 | 7 | 7 | 10 |
| Greens Bayou | 10 | 10 | 10 | 10 | 10 | 10 | 10 | 10 | 10 | 6 | 9 | 10 | 10 | 10 | 10 | 10 | 10 | 10 | 10 | 10 | 10 | 7 | 7 | 10 |
| Shell Crude | 10 | 10 | 10 | 10 | 10 | 10 | 10 | 10 | 10 | 6 | 9 | 10 | 10 | 10 | 10 | 10 | 10 | 10 | 10 | 10 | 10 | 7 | 7 | 10 |
| Lynchburg Ferries | 10 | 10 | 10 | 10 | 10 | 10 | 10 | 10 | 10 | 6 | 9 | 10 | 10 | 10 | 10 | 10 | 10 | 10 | 10 | 10 | 10 | 7 | 7 | 10 |
| Exxon 3 | 10 | 10 | 10 | 10 | 10 | 10 | 10 | 10 | 10 | 6 | 7 | 10 | 10 | 10 | 10 | 10 | 10 | 10 | 10 | 10 | 10 | 7 | 6 | 10 |
| Morgans Point | 10 | 10 | 10 | 10 | 10 | 10 | 10 | 10 | 10 | 6 | 7 | 10 | 10 | 10 | 10 | 10 | 10 | 10 | 10 | 10 | 10 | 7 | 6 | 10 |
| 75/76 | 10 | 10 | 10 | 10 | 10 | 10 | 10 | 10 | 10 | 9 | 9 | 10 | 10 | 10 | 10 | 10 | 10 | 10 | 10 | 10 | 10 | 6 | 6 | 9 |
| 63/64 | 10 | 10 | 10 | 10 | 10 | 10 | 10 | 10 | 10 | 9 | 9 | 10 | 10 | 10 | 10 | 10 | 10 | 10 | 10 | 10 | 10 | 6 | 6 | 9 |
| 51/52 | 10 | 10 | 10 | 10 | 10 | 10 | 10 | 10 | 10 | 9 | 9 | 10 | 10 | 10 | 10 | 10 | 10 | 10 | 10 | 9 | 9 | 6 | 6 | 9 |
| 37/38 | 10 | 10 | 10 | 10 | 10 | 10 | 10 | 10 | 10 | 9 | 9 | 10 | 10 | 10 | 10 | 10 | 10 | 10 | 10 | 9 | 9 | 6 | 6 | 9 |
| 25/26 | 10 | 10 | 10 | 10 | 10 | 10 | 10 | 10 | 10 | 9 | 9 | 10 | 10 | 10 | 10 | 10 | 10 | 10 | 10 | 9 | 9 | 6 | 6 | 9 |
| 11/12 | 10 | 10 | 10 | 10 | 10 | 10 | 10 | 10 | 10 | 9 | 9 | 10 | 10 | 10 | 10 | 10 | 10 | 10 | 10 | 9 | 6 | 6 | 5 | 9 |
| 1 & 2 Bravo | 9 | 10 | 9 | 10 | 9 | 10 | 9 | 10 | 10 | 6 | 7 | 10 | 10 | 10 | 10 | 10 | 10 | 6 | 6 | 6 | 6 | 4 | 4 | 9 |

NOTE: This is automated data that may/may not agree with the official BAM thinking that's found on the daily slides or special visibility report slides. This data should be used as a guide only

Houston Pilots Wind Chart



Forecast Confidence



Example

Sustained wind 13 Knots
Gusts 18 Knots
Wind from the N

WS: 13
G:18
N

| Time Knots | Thu 10pm | Thu 11pm | Fri 12am | Fri 1am | Fri 2am | Fri 3am | Fri 4am | Fri 5am | Fri 6am | Fri 7am | Fri 8am | Fri 9am | Fri 10am | Fri 11am | Fri 12pm | Fri 1pm | Fri 2pm | Fri 3pm | Fri 4pm | Fri 5pm | Fri 6pm | Fri 7pm | Fri 8pm | Fri 9pm |
|-------------------|----------|----------|----------|---------|---------|---------|---------|---------|---------|---------|---------|---------|----------|----------|----------|---------|---------|---------|---------|---------|---------|---------|---------|---------|
| 610 Bridge | 9 | 8 | 7 | 7 | 7 | 7 | 7 | 7 | 6 | 7 | 7 | 7 | 8 | 9 | 9 | 9 | 10 | 10 | 10 | 10 | 9 | 9 | 8 | 8 |
| | 17 | 16 | 16 | 15 | 15 | 14 | 14 | 14 | 13 | 14 | 15 | 15 | 16 | 17 | 19 | 19 | 19 | 19 | 19 | 18 | 17 | 17 | 16 | 15 |
| Kinder 1 | 8 | 8 | 7 | 7 | 7 | 7 | 7 | 7 | 6 | 6 | 7 | 7 | 8 | 9 | 9 | 9 | 10 | 10 | 10 | 10 | 9 | 9 | 8 | 8 |
| | 17 | 16 | 16 | 15 | 15 | 14 | 14 | 14 | 13 | 14 | 15 | 15 | 16 | 17 | 19 | 19 | 19 | 19 | 19 | 18 | 17 | 17 | 16 | 15 |
| Greens Bayou | 8 | 8 | 7 | 7 | 7 | 7 | 7 | 7 | 6 | 6 | 7 | 7 | 8 | 9 | 9 | 9 | 10 | 10 | 9 | 9 | 9 | 9 | 8 | 8 |
| | 17 | 16 | 16 | 15 | 15 | 14 | 14 | 14 | 14 | 14 | 15 | 15 | 16 | 17 | 19 | 19 | 19 | 18 | 18 | 18 | 17 | 17 | 16 | 15 |
| Shell Crude | 9 | 8 | 7 | 7 | 7 | 7 | 7 | 7 | 7 | 7 | 7 | 8 | 9 | 9 | 9 | 10 | 10 | 10 | 10 | 9 | 9 | 8 | 8 | |
| | 17 | 17 | 16 | 15 | 15 | 15 | 14 | 14 | 14 | 15 | 15 | 15 | 16 | 17 | 19 | 19 | 19 | 18 | 18 | 18 | 17 | 17 | 16 | 15 |
| Lynchburg Ferries | 8 | 8 | 7 | 7 | 7 | 7 | 7 | 7 | 7 | 7 | 7 | 8 | 9 | 9 | 10 | 10 | 10 | 10 | 10 | 9 | 9 | 8 | 8 | |
| | 17 | 16 | 16 | 15 | 15 | 14 | 14 | 14 | 14 | 14 | 15 | 15 | 17 | 17 | 19 | 19 | 19 | 19 | 18 | 18 | 17 | 17 | 16 | 15 |
| Exxon 3 | 13 | 13 | 12 | 12 | 12 | 11 | 11 | 11 | 11 | 11 | 11 | 11 | 11 | 11 | 12 | 12 | 12 | 12 | 12 | 12 | 12 | 11 | 11 | 12 |
| | 19 | 18 | 18 | 17 | 17 | 17 | 17 | 16 | 16 | 15 | 16 | 16 | 17 | 18 | 19 | 19 | 19 | 19 | 19 | 19 | 18 | 17 | 17 | 17 |
| Morgans Point | 13 | 13 | 13 | 12 | 12 | 12 | 12 | 11 | 11 | 11 | 11 | 11 | 11 | 11 | 12 | 12 | 12 | 12 | 12 | 12 | 12 | 11 | 12 | 12 |
| | 20 | 19 | 19 | 18 | 18 | 18 | 17 | 17 | 17 | 16 | 17 | 17 | 18 | 18 | 19 | 19 | 19 | 19 | 19 | 19 | 18 | 17 | 18 | 18 |
| 75/76 | 15 | 15 | 14 | 14 | 14 | 14 | 13 | 13 | 13 | 13 | 13 | 13 | 13 | 13 | 13 | 13 | 13 | 13 | 13 | 13 | 13 | 13 | 13 | 13 |
| | 21 | 21 | 20 | 20 | 20 | 20 | 19 | 19 | 19 | 19 | 19 | 19 | 19 | 19 | 20 | 21 | 21 | 21 | 20 | 20 | 20 | 19 | 19 | 19 |
| 63/64 | 15 | 15 | 15 | 14 | 14 | 14 | 14 | 13 | 13 | 13 | 13 | 13 | 13 | 13 | 13 | 13 | 13 | 13 | 13 | 13 | 13 | 13 | 13 | 13 |
| | 21 | 21 | 20 | 20 | 20 | 20 | 20 | 19 | 19 | 19 | 19 | 19 | 19 | 19 | 20 | 21 | 21 | 21 | 20 | 20 | 20 | 19 | 19 | 19 |
| 51/52 | 15 | 15 | 15 | 15 | 15 | 15 | 15 | 14 | 14 | 13 | 13 | 13 | 13 | 13 | 13 | 13 | 13 | 13 | 13 | 13 | 13 | 13 | 13 | 14 |
| | 21 | 21 | 20 | 20 | 20 | 20 | 20 | 20 | 20 | 19 | 19 | 20 | 20 | 20 | 20 | 20 | 20 | 20 | 20 | 20 | 19 | 18 | 19 | 20 |
| 37/38 | 15 | 15 | 15 | 14 | 15 | 15 | 15 | 14 | 14 | 13 | 13 | 13 | 13 | 13 | 13 | 13 | 13 | 13 | 13 | 13 | 13 | 13 | 13 | 14 |
| | 21 | 21 | 20 | 20 | 20 | 21 | 20 | 20 | 20 | 19 | 19 | 20 | 20 | 20 | 20 | 20 | 20 | 20 | 20 | 20 | 19 | 18 | 19 | 20 |
| 25/26 | 15 | 15 | 14 | 14 | 14 | 14 | 14 | 14 | 13 | 13 | 13 | 13 | 13 | 13 | 13 | 13 | 13 | 13 | 13 | 13 | 13 | 13 | 13 | 13 |
| | 21 | 21 | 20 | 20 | 20 | 20 | 20 | 20 | 20 | 19 | 19 | 19 | 20 | 20 | 20 | 20 | 20 | 20 | 20 | 20 | 19 | 18 | 19 | 20 |
| 11/12 | 13 | 13 | 13 | 13 | 13 | 13 | 13 | 13 | 13 | 12 | 13 | 13 | 13 | 13 | 13 | 13 | 13 | 13 | 13 | 13 | 12 | 12 | 12 | 13 |
| | 20 | 20 | 19 | 19 | 20 | 20 | 19 | 19 | 19 | 18 | 19 | 19 | 19 | 19 | 19 | 19 | 19 | 19 | 19 | 19 | 18 | 18 | 19 | 19 |
| 1 & 2 Bravo | 15 | 15 | 15 | 15 | 15 | 15 | 15 | 15 | 15 | 14 | 15 | 15 | 14 | 14 | 14 | 13 | 13 | 13 | 13 | 14 | 13 | 13 | 14 | 15 |
| | 21 | 22 | 21 | 21 | 21 | 21 | 21 | 21 | 21 | 20 | 20 | 20 | 20 | 20 | 20 | 20 | 20 | 20 | 20 | 20 | 20 | 19 | 20 | 21 |

NOTE: This is automated data that may/may not agree with the official BAM thinking that's found on the daily slides. This data should be used as a guide only.

Houston Pilots: Fri. 5/31/2024



Forecast Discussion

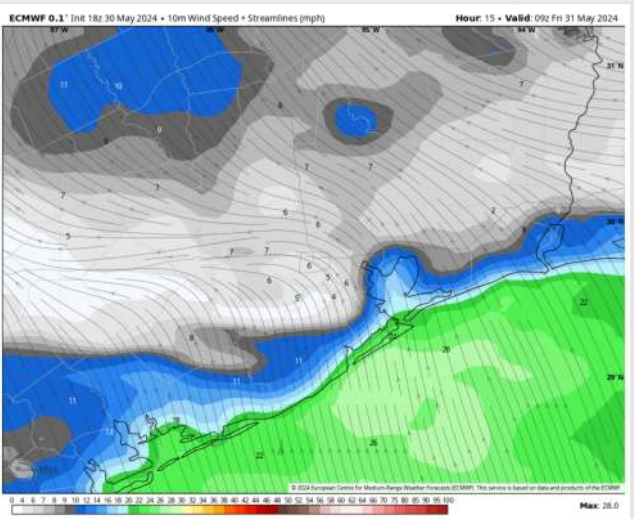
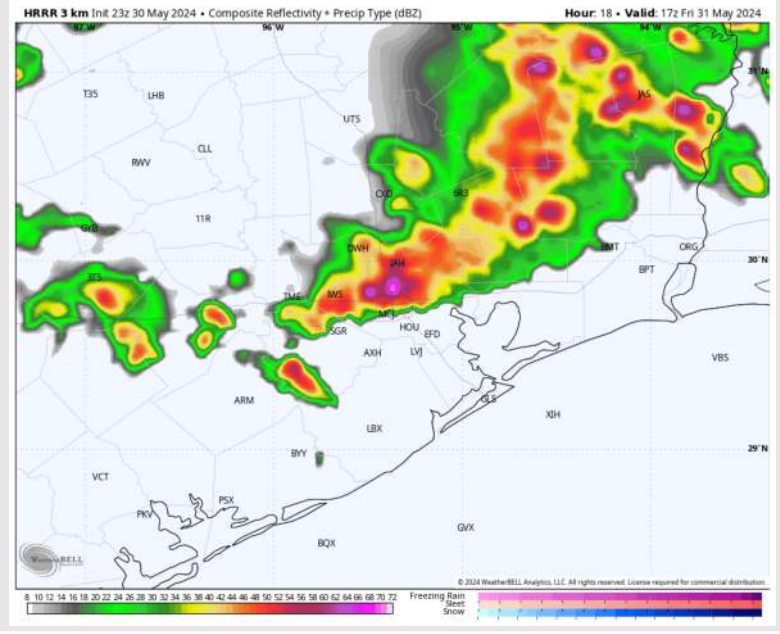
Precip: Shower and storm chances are on the increase for this morning. Favoring as early as 6 AM a few hit and miss cells could develop over HOU ahead of the main line. Closer to 12 PM, favoring a line of strong to severe storms to push in with the strongest of these storms not passing the Boarding Station until 2 PM CT. After 2 PM, chances for rain will be very light and isolated with the next potential for storms moving in around 7 PM. **Thunderstorm wind gusts of 40-50 kts will be possible along the leading edge of storms in the AM! Risk is morning storm line arrives 2-3 hours earlier!**

Wind: Winds will be out of SE throughout the day FRI. **N of Morgan's Point:** Winds at 5-10 kts through 8 AM then increase to 8 - 13 kts and remaining there for the rest of the day. **S of Morgan's Point:** Winds at 18 - 23 kts the storm. After the storm winds will sit at 15 - 20 kts **Wind gusts of 27-32 kts will be possible at all stations from 10 AM through 6 PM.**

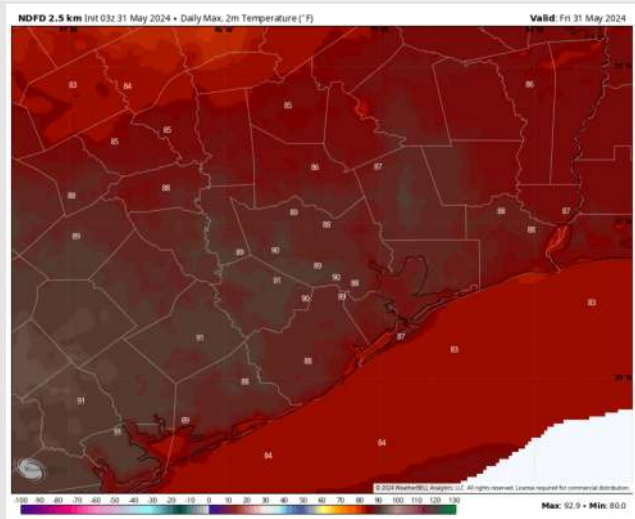
High Temps: **N of Morgan's Point:** Upper 80s/Low 90s F **S of Morgan's Point:** Low/Mid 80s F.

Visibility: Not anticipating fog however visibility may be slightly reduced under heavy downpours.

Precip Image: 12 PM CT



**Wind Speed:
4 AM CT**



**High Temps
Today**

Houston Pilots: Sat. 6/1/2024



Forecast Discussion

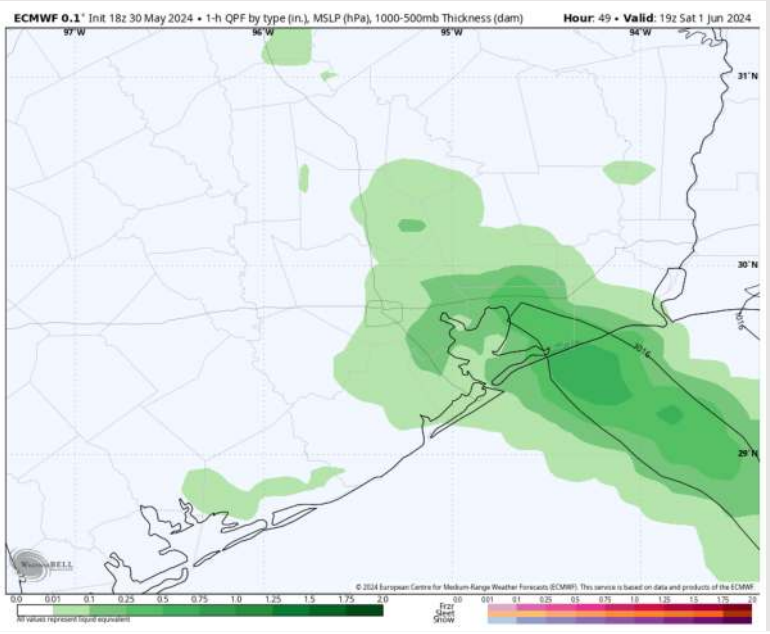
Precip: Isolated light rain chances (10%) will linger throughout the area from 4AM – 7AM before more widespread chances work into the area starting at 7AM – 7PM. After 7PM before chances decrease to become more scattered (30-40%) throughout the rest of the evening Saturday. **Thunderstorm wind gusts of 25 – 30 kts possible!**

Wind: Winds out of the S/SE throughout the day. **N of Morgan's Point:** Winds at 3-8 kts throughout the day Saturday. **S of Morgan's Point:** Winds at 18-23 kts through 6AM before decreasing to 10 – 15 kts throughout the rest of the day Saturday. **Non-Thunderstorm wind gusts of 25-30 kts will be possible for stations S of Morgan's point after 2PM.**

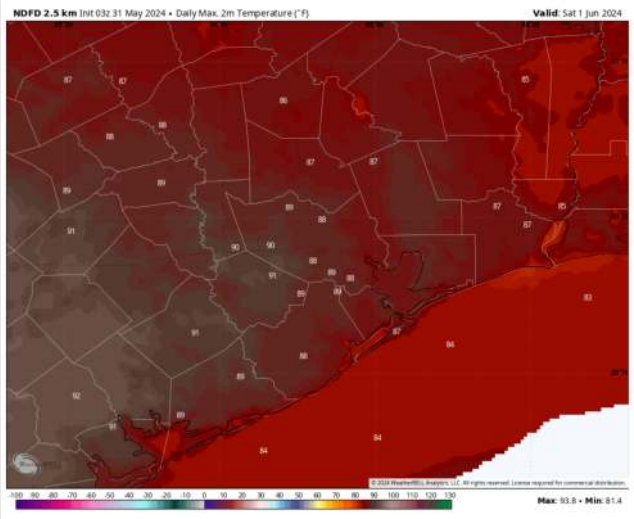
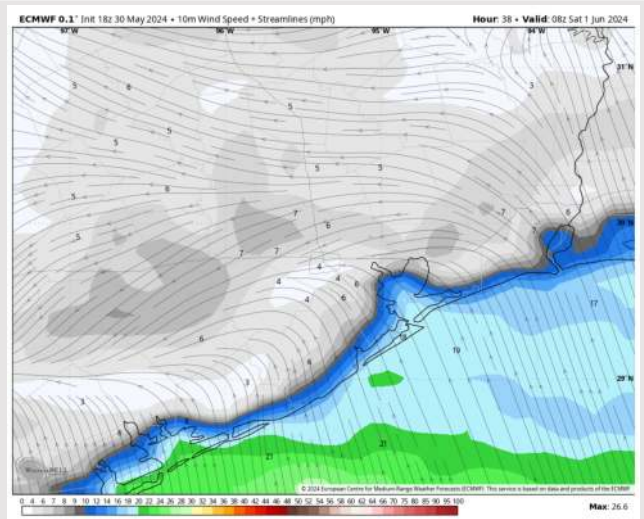
High Temps: **N of Morgan's Point:** Upper 80s F. **S of Morgan's Point:** Low 80s F.

Visibility: Not anticipating any fog risk throughout the day Saturday.

Precip Image: 2 PM CT



Wind Speed
3 AM CT



High Temps
Saturday

Forecast Discussion

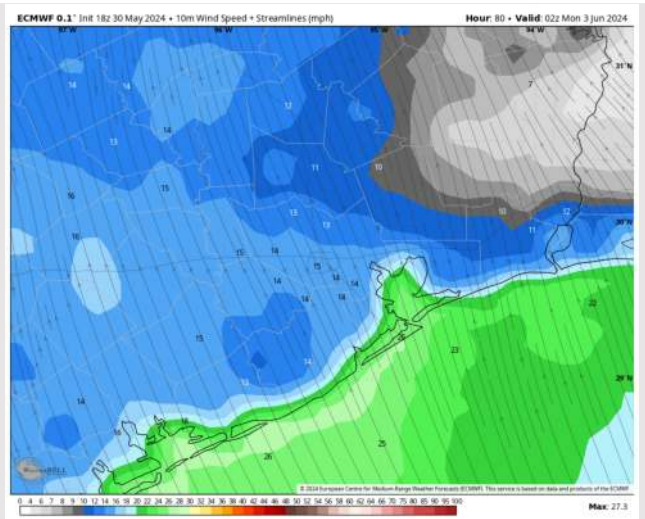
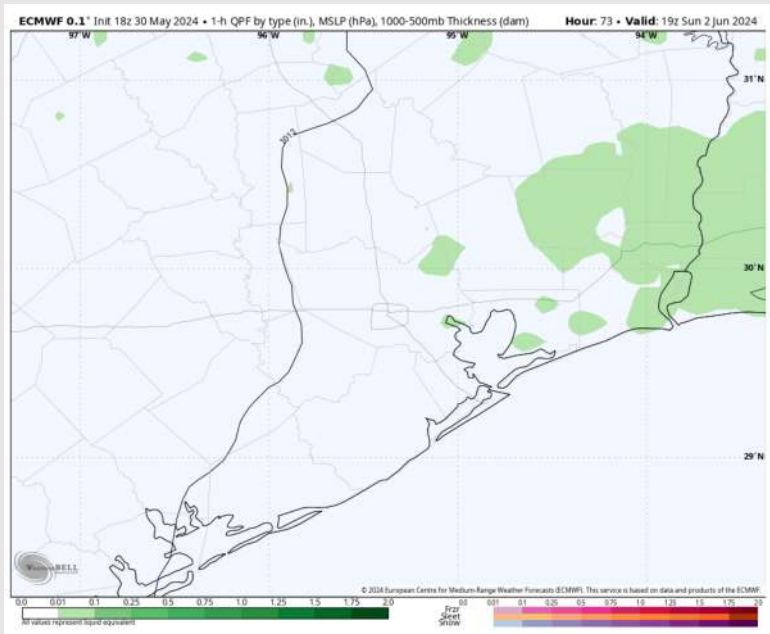
Precip: Favoring dry conditions outside isolated light showers between 9AM-4PM Sunday.

Wind: Winds out of the S/SE throughout the PM. **N of Morgan's Point:** Winds are on the increase to 5 – 10 kts through 4PM, before increasing to 9-14 kts for the remainder of the day. **S of Morgan's Point:** Winds at 11 – 16 kts through 5PM before winds increase to 19 – 24 kts throughout the rest of the day.

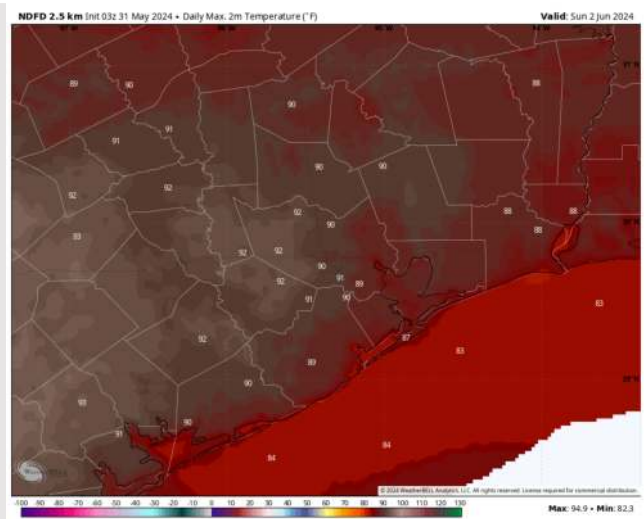
High Temps: **N of Morgan's Point:** Low 90s F. **S of Morgan's Point:** Near to Low 80s F.

Visibility: Not anticipating any fog for today.

Precip Image: 2 PM CT

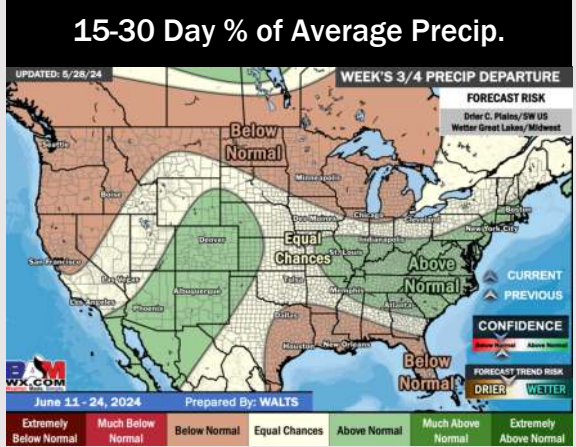
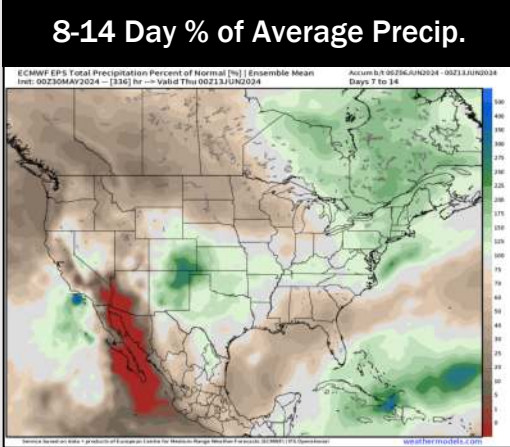
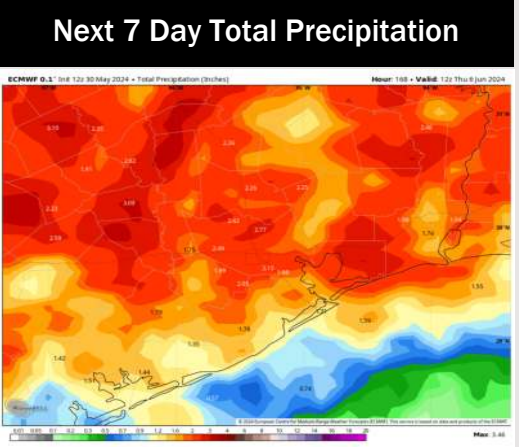
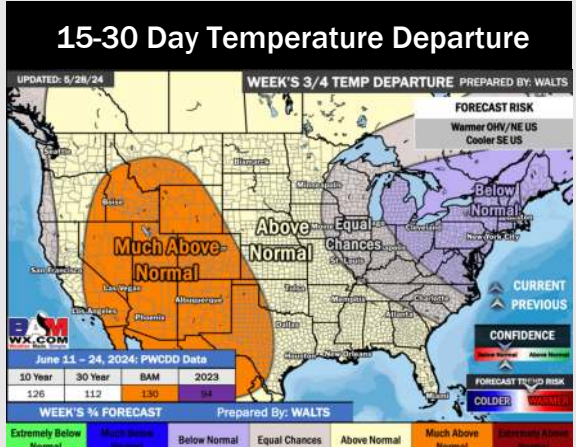
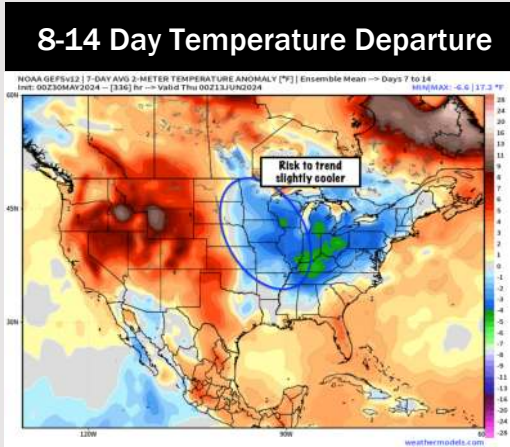
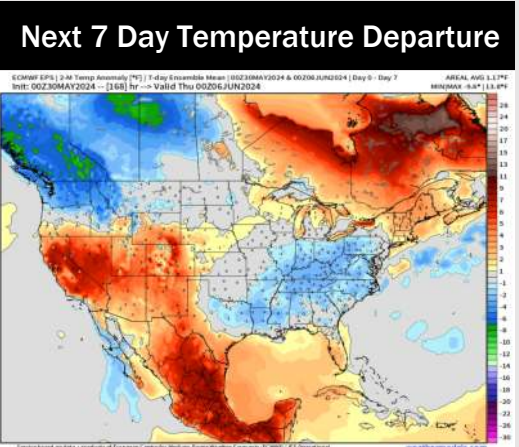


Wind Speed:
9 PM CT



High Temps
Sunday

Houston Pilots: 5/30/24



- Temps are expected to be near normal for the week 1 timeframe. A more active next few days is expected with multiple shower/storm chances.
- Near normal precipitation chances are at play during the week 2 timeframe. Temps are expected to be near to above normal.
- Below normal chances for precipitation are favored in the weeks 3/4 timeframe. Temperatures expected to be above normal for the weeks 3 and 4 timeframe.