

Houston Pilots Forecast Package



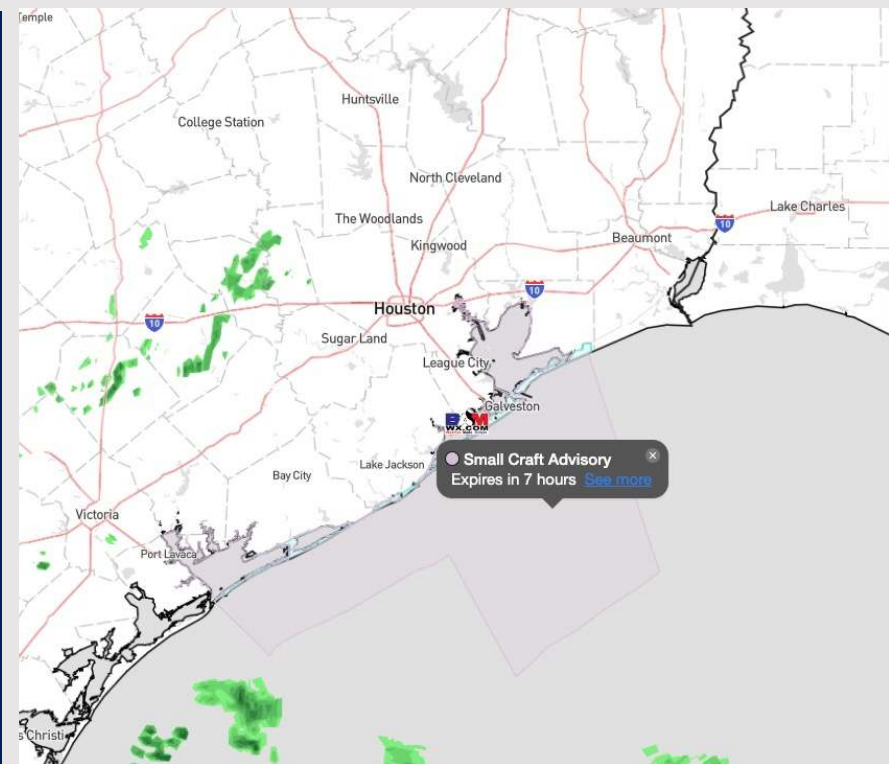
Updated: 12:40 PM CT

Saturday, May 11, 2024

Forecaster: Jonathan Kipper

Weather Headlines

- Thunderstorm chances begin to increase as we get beyond 7PM, with multiple rounds in play through at least Monday. **Stronger wind gusts in play with heaviest storms.**
- Not anticipating any fog concerns over the next few days.
- Wind gusts for locations S of Morgan's point can reach up to 25-30kts throughout the next few days.



Current Radar: 12:30 PM CT



As always, please do not hesitate to reach out to us with any forecast questions via the chat option on Clarity or our on-call number, **(317)-560-8122** press 1 for forecast questions.

Houston Pilots Visibility Chart (miles)



Time	Sat 1pm	Sat 2pm	Sat 3pm	Sat 4pm	Sat 5pm	Sat 6pm	Sat 7pm	Sat 8pm	Sat 9pm	Sat 10pm	Sat 11pm	Sun 12am	Sun 1am	Sun 2am	Sun 3am	Sun 4am	Sun 5am	Sun 6am	Sun 7am	Sun 8am	Sun 9am	Sun 10am	Sun 11am	Sun 12pm
610 Bridge	10	10	10	10	10	10	10	10	10	6	10	9	9	10	9	9	9	9	6	5	5	6	6	10
Kinder 1	10	10	10	10	10	10	10	10	10	6	10	9	9	9	9	9	9	9	6	5	5	6	6	10
Greens Bayou	10	10	10	10	10	10	10	10	10	6	10	9	9	9	9	9	9	9	6	5	5	6	6	10
Shell Crude	10	10	10	10	10	10	10	10	10	6	10	7	9	9	9	9	9	9	6	5	5	6	6	10
Lynchburg Ferries	10	10	10	10	10	10	10	10	10	9	10	7	7	9	8	9	9	9	6	5	5	6	6	10
Exxon 3	10	10	10	10	10	10	10	10	10	6	6	7	7	9	8	9	9	9	6	5	5	6	6	10
Morgans Point	10	10	10	10	10	10	10	10	10	6	6	9	7	9	8	10	9	9	6	5	5	6	6	10
75/76	10	10	10	10	10	10	10	10	10	6	10	6	6	7	9	9	9	9	9	9	9	9	10	10
63/64	10	10	10	10	10	10	10	10	10	6	10	6	6	7	9	9	9	9	9	9	9	9	10	10
51/52	10	10	10	10	10	10	10	10	10	6	10	10	10	10	9	9	9	9	9	9	9	9	10	9
37/38	10	10	10	10	10	10	10	10	10	7	10	10	10	10	9	9	9	9	9	9	9	9	10	9
25/26	10	10	10	10	10	10	10	10	10	7	10	10	10	10	9	9	9	9	9	9	9	9	9	9
11/12	10	10	10	10	10	10	10	10	10	6	9	10	10	10	9	9	9	9	9	9	9	9	9	9
1 & 2 Bravo	10	10	10	9	9	7	6	6	6	6	6	6	6	6	9	9	9	9	9	9	9	9	9	9

NOTE: This is automated data that may/may not agree with the official BAM thinking that's found on the daily slides or special visibility report slides. This data should be used as a guide only

Houston Pilots Wind Chart



Forecast Confidence



Sustained wind 13 Knots
Gusts 18 Knots
Wind from the N

Example

WS: 13
G:18
N

Time Knots	Sat 1pm	Sat 2pm	Sat 3pm	Sat 4pm	Sat 5pm	Sat 6pm	Sat 7pm	Sat 8pm	Sat 9pm	Sat 10pm	Sat 11pm	Sun 12am	Sun 1am	Sun 2am	Sun 3am	Sun 4am	Sun 5am	Sun 6am	Sun 7am	Sun 8am	Sun 9am	Sun 10am	Sun 11am	Sun 12pm
610 Bridge	10 18 E	10 19 E	10 19 E	10 19 ESE	9 19 ESE	9 18 ESE	9 18 ESE	8 17 ESE	7 15 ESE	7 14 ESE	6 13 ESE	5 11 E	5 10 E	5 10 E	5 11 E	6 12 E	6 12 E	6 11 E	6 12 E	6 13 ESE	7 13 ESE	9 15 ESE	9 18 ESE	10 20 SE
Kinder 1	10 18 E	9 19 E	10 18 E	10 19 ESE	9 19 ESE	9 18 ESE	9 18 ESE	8 16 ESE	7 15 ESE	7 14 ESE	6 13 ESE	5 11 E	5 10 E	5 11 E	5 11 E	6 12 E	6 12 E	5 12 E	6 12 E	6 13 ESE	7 13 ESE	8 15 ESE	9 18 ESE	10 20 SE
Greens Bayou	9 16 E	9 18 E	10 18 ESE	9 17 ESE	9 17 ESE	9 17 ESE	8 17 ESE	8 16 ESE	7 14 ESE	7 14 SE	6 13 ESE	5 11 E	5 10 E	5 11 E	5 11 E	6 12 E	6 12 E	5 12 E	6 13 E	7 13 ESE	7 13 ESE	8 15 ESE	9 17 ESE	11 19 SE
Shell Crude	10 17 E	9 18 E	9 18 ESE	9 18 ESE	9 17 ESE	9 17 ESE	9 17 ESE	8 16 ESE	7 14 ESE	7 14 SE	6 13 ESE	5 11 E	5 10 E	5 11 E	5 11 E	5 12 E	6 12 E	6 13 E	6 13 E	7 13 ESE	7 13 ESE	8 15 ESE	9 17 ESE	11 19 SE
Lynchburg Ferries	9 16 E	9 16 E	9 16 ESE	9 16 ESE	9 16 ESE	9 15 ESE	9 15 ESE	7 14 ESE	7 13 ESE	7 14 SE	6 13 ESE	5 10 E	5 9 E	5 9 E	5 10 E	5 12 E	6 12 E	6 12 E	6 13 E	7 13 ESE	7 13 ESE	9 15 ESE	10 18 ESE	11 19 SE
Exxon 3	11 16 E	11 18 E	11 17 E	12 18 ESE	12 19 ESE	11 19 ESE	11 17 ESE	11 16 ESE	11 15 ESE	11 15 SE	10 14 ESE	9 12 E	8 13 E	9 13 E	9 15 E	10 15 E	11 14 E	10 14 E	10 15 E	10 14 ESE	11 15 ESE	11 16 ESE	13 18 ESE	13 20 SE
Morgans Point	12 17 E	12 18 E	12 19 ESE	13 19 ESE	13 19 ESE	12 18 ESE	12 18 ESE	12 18 ESE	11 16 ESE	11 17 ESE	11 15 ESE	9 14 ESE	9 13 E	9 13 E	9 13 E	10 14 E	10 15 ESE	11 15 ESE	11 15 ESE	11 15 ESE	11 16 ESE	11 16 ESE	12 18 ESE	13 20 SE
75/76	14 21 E	15 21 E	16 23 ESE	16 23 ESE	16 24 ESE	17 24 ESE	17 24 ESE	17 25 ESE	16 23 ESE	15 22 ESE	14 21 ESE	14 21 ESE	13 19 ESE	13 20 ESE	13 21 ESE	14 21 ESE	15 23 ESE	15 23 ESE	15 23 ESE	15 23 ESE	15 22 ESE	15 23 ESE	15 21 ESE	16 24 ESE
63/64	14 21 E	15 22 E	16 23 E	15 23 ESE	16 23 ESE	16 24 ESE	16 24 ESE	15 23 ESE	15 22 ESE	14 21 ESE	14 21 ESE	13 19 ESE	13 19 ESE	13 21 ESE	13 21 ESE	14 22 ESE	15 21 ESE	15 22 ESE	15 22 ESE	15 22 ESE	15 22 ESE	15 21 ESE	15 22 ESE	16 23 ESE
51/52	16 23 E	17 24 E	17 24 E	15 22 E	16 23 E	17 24 E	17 24 E	16 23 ESE	15 22 ESE	14 21 ESE	14 21 ESE	13 19 ESE	13 18 ESE	13 19 ESE	13 20 ESE	14 20 ESE	14 21 ESE	14 21 ESE	14 21 ESE	15 21 ESE	15 21 ESE	15 22 ESE	15 22 ESE	16 23 ESE
37/38	17 24 E	17 24 E	17 24 E	15 22 E	16 23 E	17 24 E	16 23 E	16 23 ESE	15 22 ESE	14 20 ESE	14 21 ESE	13 18 ESE	13 19 ESE	13 19 ESE	13 20 ESE	13 20 ESE	14 21 ESE	14 21 ESE	14 21 ESE	14 21 ESE	15 21 ESE	15 22 ESE	15 22 ESE	16 23 ESE
25/26	17 E	17 25 E	17 25 E	16 23 E	16 23 E	15 22 E	15 22 E	15 22 E	14 21 ESE	13 19 ESE	13 20 ESE	12 17 ESE	12 17 ESE	12 17 ESE	12 18 ESE	13 19 ESE	13 19 ESE	13 19 ESE	14 20 ESE	14 20 ESE	14 21 ESE	15 21 ESE	15 21 ESE	15 23 ESE
11/12	17 24 E	17 26 E	17 24 E	16 23 E	15 22 E	15 21 E	14 20 E	13 19 ESE	13 19 ESE	11 17 ESE	11 16 ESE	12 17 ESE	9 14 SE	9 14 SE	9 14 SE	10 15 SE	11 15 SE	11 16 SE	11 18 SE	12 18 SE	13 18 SE	13 20 SE	14 21 SE	15 22 SE
1 & 2 Bravo	18 26 E	18 26 E	17 25 E	17 26 E	17 25 E	17 24 E	15 22 E	15 22 E	15 22 E	14 21 ESE	14 21 ESE	14 21 ESE	13 19 SE	13 18 SE	13 19 SE	13 19 SE	13 20 ESE	14 20 ESE	15 21 ESE	15 21 ESE	14 21 ESE	15 21 ESE	15 22 ESE	15 22 ESE

NOTE: This is automated data that may/may not agree with the official BAM thinking that's found on the daily slides. This data should be used as a guide only

Houston Pilots: Sat. 5/11/2024



Forecast Discussion

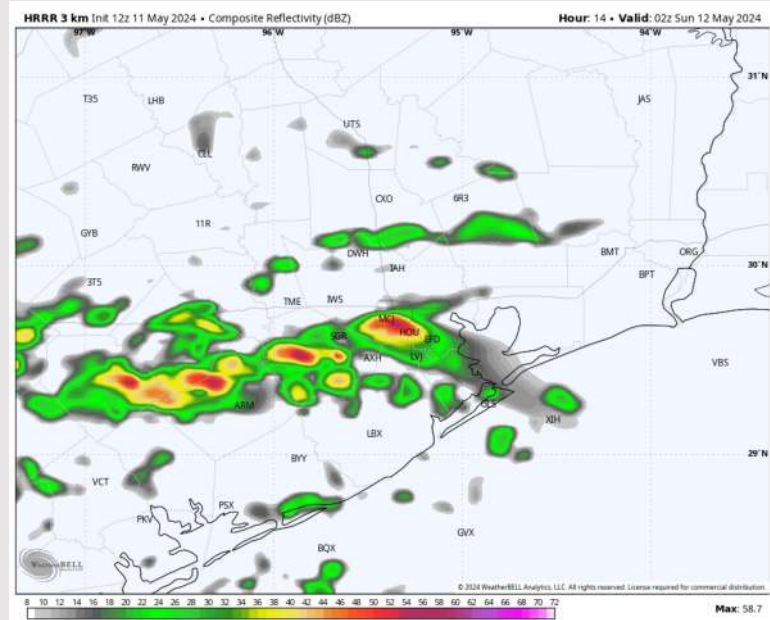
Precip: Dry conditions favored through 3 PM. Hit/miss showers will then be in play for all Stations. After 7 PM, rain chances will increase in coverage with a risk for a few storms to mix in as well, especially as we get later into the evening. **A few storms will be capable of small hail and gusts of 35 – 40 kts in a localized fashion.**

Wind: Winds out of the E/SE throughout the PM hours today. **N of Morgan's Point:** Winds at 6-11 kts throughout the day. **S of Morgan's Point:** Winds at 12-17 kts throughout the day, with locally higher of 15-20 kts towards the Boarding Station. **Non thunderstorm gusts able to reach 25-30 kts S of Morgan's Point.**

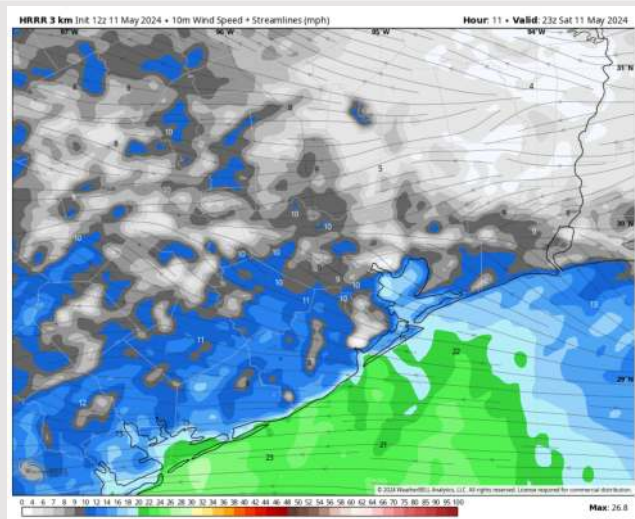
Low Temps: **N of Morgan's Point:** Low 70s F. **S of Morgan's Point:** Mid 70s F.

Visibility: Not favoring any fog concerns for the rest of the day.

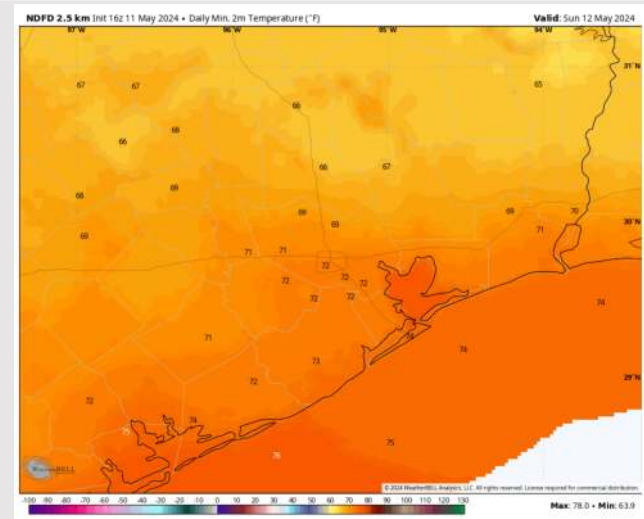
Precip Image: 9 PM CT



Wind Speed
6 PM CT



Low Temps
SUN AM



Houston Pilots: Sun. 5/12/2024



Forecast Discussion

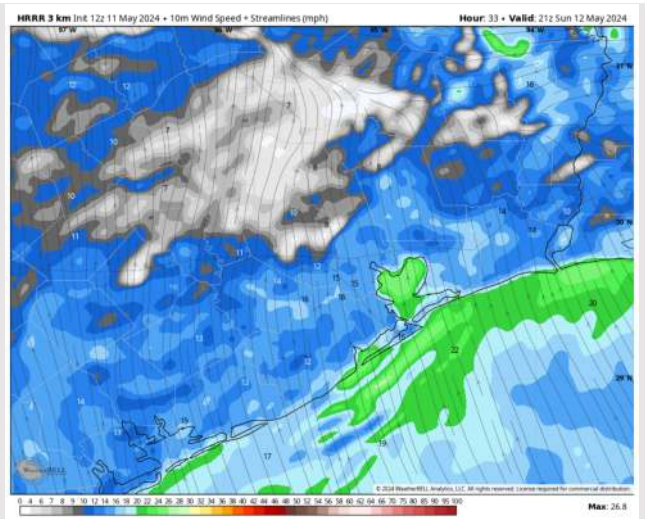
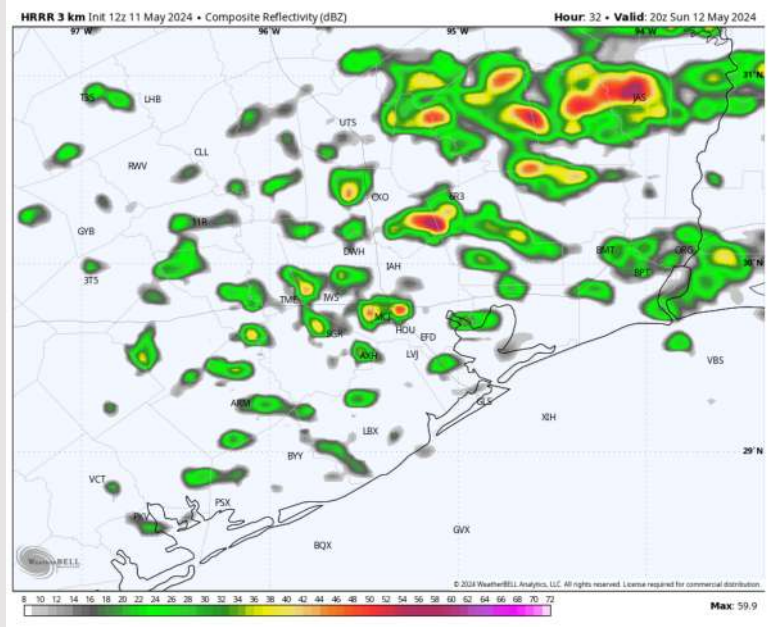
Precip: Showers and storms in play through 3 AM before coverage becomes more hit/mis the rest of the morning. After 12 PM showers/storms become scattered through 8 PM before tapering off the rest of the evening (noting northerly trends to where most widespread coverage can lie N of Stations). **Lightning and wind gusts of 35-45 kts will be the main risks with storms.**

Wind: Winds will be out of the SE throughout the day Sunday. **N of Morgan's Point:** Winds at 5-10 kts through 10 AM, increasing to 8-13 kts after that time. Winds then return to 5-10 kts after 8 PM. **S of Morgan's Point:** Winds at 15 - 20 kts throughout Sunday. **Non-T-Storm Gusts of 23-28 kts will be possible for all stations throughout the day.**

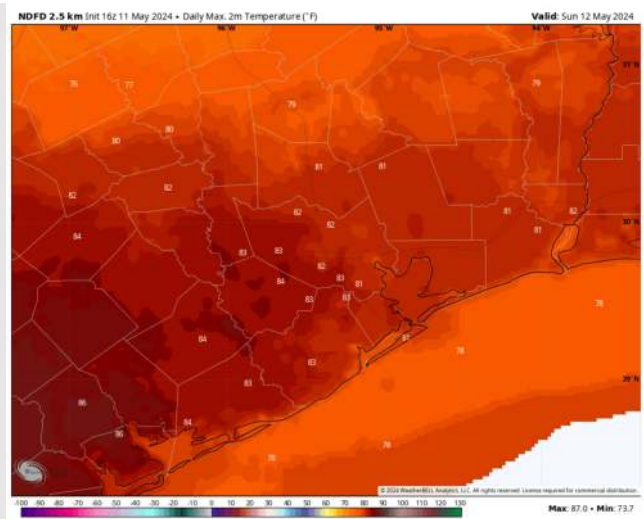
High Temps: **N of Morgan's Point:** Low 80 F. **S of Morgan's Point:** Upper 70s F.

Visibility: Not favoring any fog concerns Sunday, however visibilities can be reduced under heavy downpours.

Precip Image: 3 PM CT



Wind Speed:
4 PM CT



High Temps
Sunday

Houston Pilots: Mon. 5/13/2024



Forecast Discussion

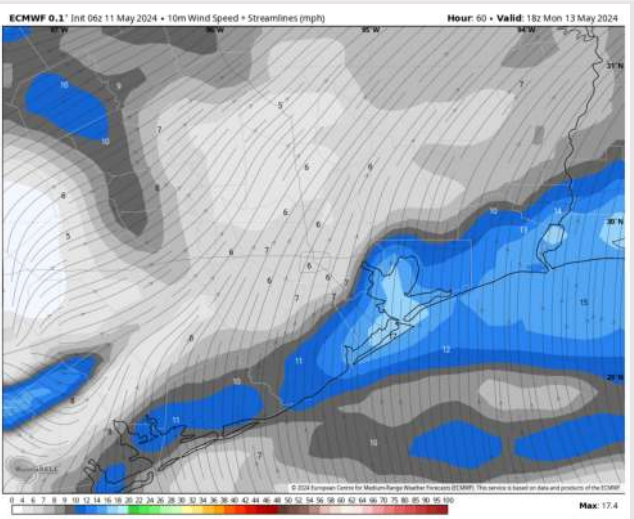
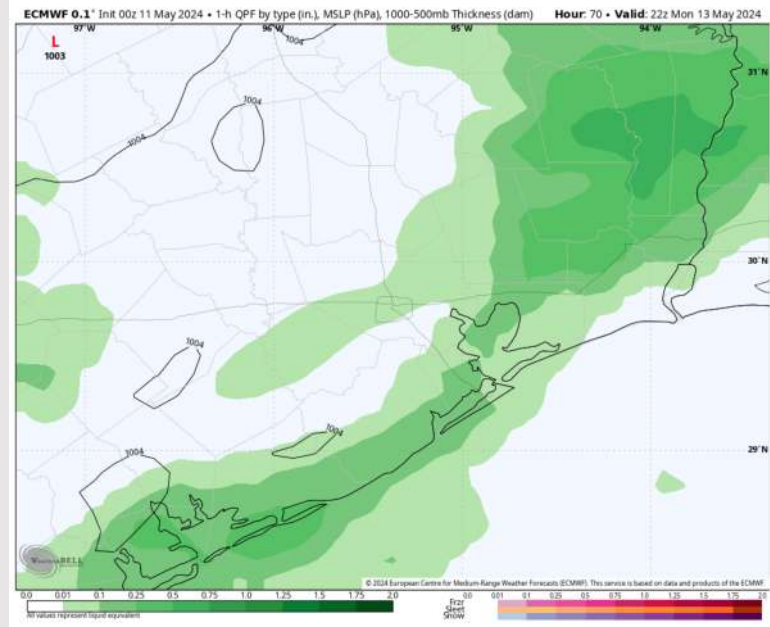
Precip: A couple isolated showers will be possible through ~4 AM-CT, then anticipating clear conditions through the morning/early afternoon. Scattered thunderstorms likely build in towards ~3 PM and continue into the evening, with a few stronger gusts of up to 35kts possible.

Wind: Winds will be out of the S / SW for the entire day / prior to a front passing around 9 PM, which is when winds will become variable for a brief time. **N of Morgan's Point:** Winds at 5-10 kts through 9 PM before decreasing to 3-7 kts. **S of Morgan's Point:** Winds at 10 - 15 kts for the entire day. **Non T-Storm Gusts** may reach 25 kts at times near the Boarding Station and 11/12 after 5PM.

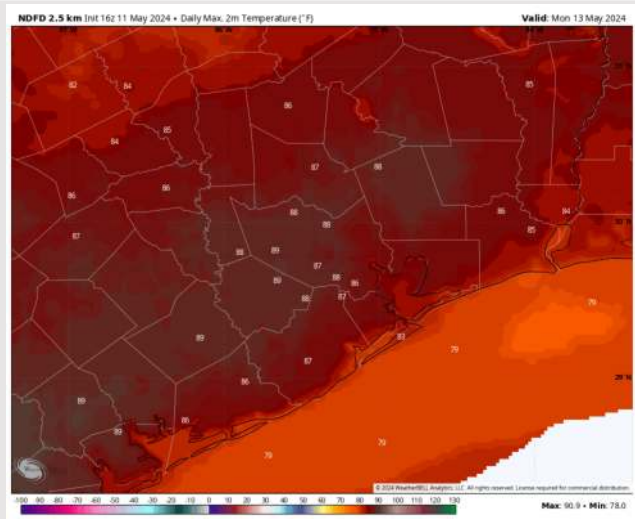
High Temps: **N of Morgan's Point:** Mid/Upper 80s F **S of Morgan's Point:** Low/Mid 80s F.

Visibility: Not anticipating any fog concerns for Monday.

Precip Image: 5 PM CT



Wind Speed:
1 PM CT

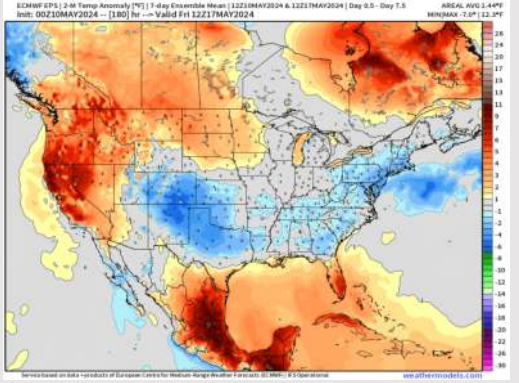


High Temps
Monday

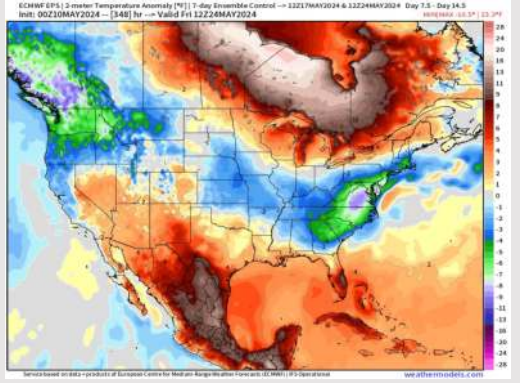
Houston Pilots: 5/11/24



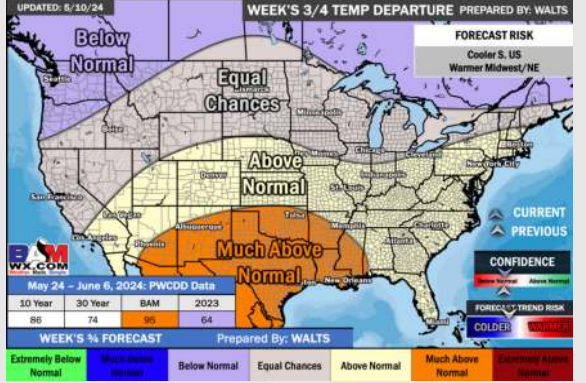
Next 7 Day Temperature Departure



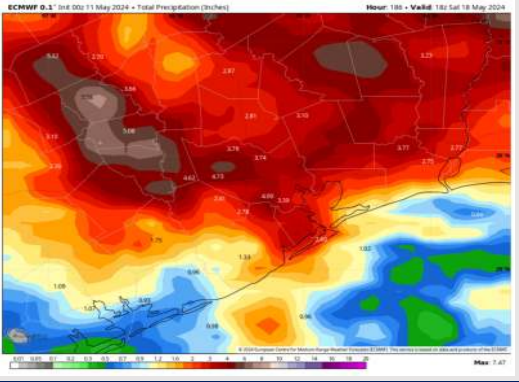
8-14 Day Temperature Departure



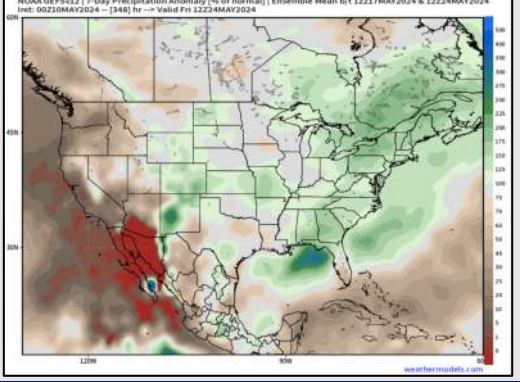
15-30 Day Temperature Departure



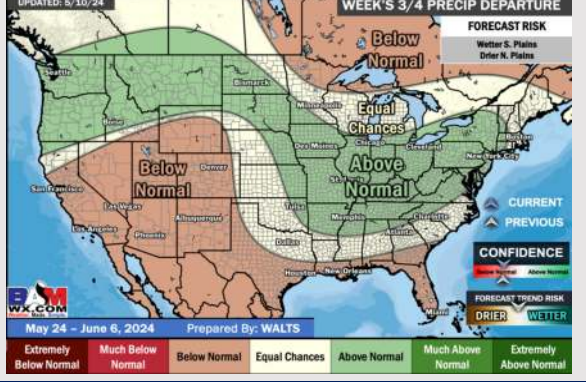
Next 7 Day Total Precipitation



8-14 Day % of Average Precip.



15-30 Day % of Average Precip.



- An active pattern this week with scattered shower /storm chances through MON, then another round starting THU and into the weekend. Temps are expected to be slightly above normal for the week 1 timeframe.
- Near normal precipitation chances are at play during the week 2 timeframe. Temps are expected to be slightly above normal.
- Below normal chances for precipitation are favored in the weeks ¾ timeframe. Temperatures expected to be much above normal for the weeks 3 and 4 timeframe.